



Australia 2 - 0 Denmark

Round of 16 - Match 53

07 August 2023

20:30 Kick Off

Stadium Australia

POST MATCH SUMMARY REPORT

Match Summary - Teams

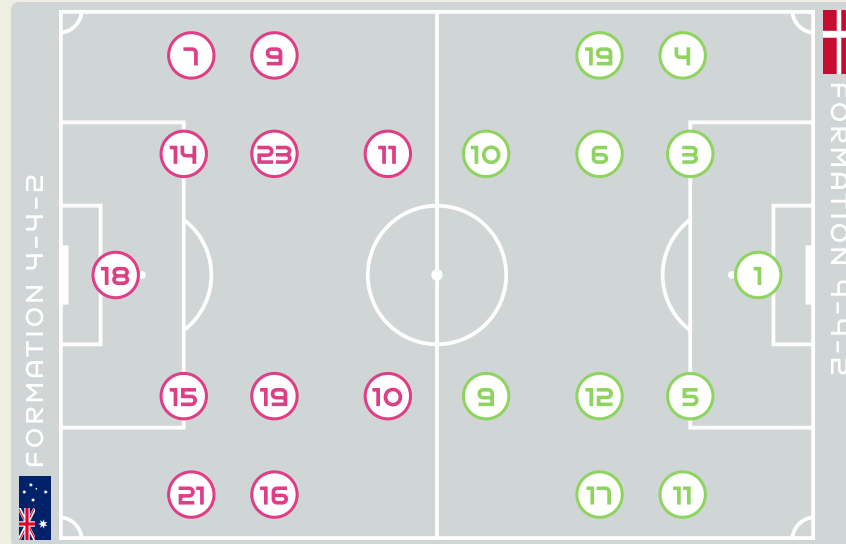


STARTING

18	GK	ARNOLD Mackenzie	
7	DF	CATLEY Steph (C)	
9	FW	FOORD Caitlin	⚽ 29' ↓ 90+5'
10	MF	VAN EGMOND Emily	↓ 80'
11	FW	FOWLER Mary	↓ 90+1'
14	DF	KENNEDY Alanna	
15	DF	HUNT Clare	
16	FW	RASO Hayley	⚽ 71' ↓ 80'
19	MF	GORRY Katrina	
21	DF	CARPENTER Ellie	
23	MF	COONEY-CROSS Kyra	

SUBSTITUTES

1	GK	WILLIAMS Lydia	
12	GK	MICAH Teagan	
2	DF	NEVIN Courtney	
3	DF	LUIK Aivi	
4	DF	POLKINGHORNE Clare	↑ 90+1'
5	FW	VINE Cortnee	↑ 80'
6	MF	WHEELER Clare	
8	MF	CHIDIAC Alex	
13	MF	YALLOP Tameka	↑ 90+5'
17	FW	SIMON Kyah	
20	FW	KERR Sam	↑ 80'
22	DF	GRANT Charlotte	



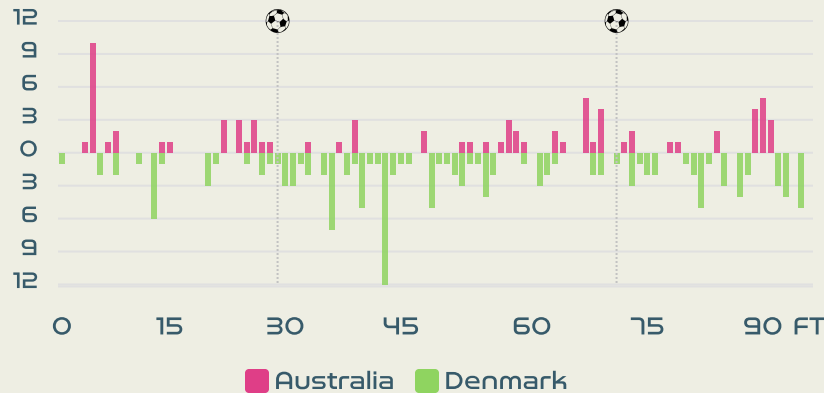
STARTING

CHRISTENSEN Lene	GK	1	
BALLISAGER Stine	DF	3	
↓ 63'	SEVECKE Rikke	DF	4
	BOYE Simone	DF	5
↓ 82'	HOLMGAARD Karen	MF	6
↓ 82'	VANGSGAARD Amalie	FW	9
	(C) HARDER Pernille	FW	10
	VEJE Katrine	DF	11
↓ 73'	KUHL Kathrine	MF	12
↓ 63'	MADSEN Rikke Marie	FW	17
⚪ 66'	THOMSEN Janni	DF	19

SUBSTITUTES

LARSEN Kathrine	GK	16	
BAY Maja	GK	22	
↑ 73'	HASBO Josefine	MF	2
↑ 82'	TROELSGAARD Sanne	MF	7
↑ 82'	SNERLE Emma	MF	8
	THRIGE Sara	DF	13
	SORENSEN Nicoline	MF	14
	THOGERSEN Frederikke	MF	15
	GEVITZ Luna	DF	18
↑ 63'	BRUUN Signe	FW	20
↑ 63'	GEJL Mille	FW	21
	SVAVA Sofie	DF	23

Distribution in the Final Third



Match Summary - Key Statistics



Possession

Total	37.8%	13.7%	48.5%	Total
2	Goals			0
10 (3)	Attempts at Goal (On Target)			13 (3)
379 (279)	Total Passes (Complete)			495 (389)
74 %	Pass Completion %			79 %
65	Completed Line Breaks			75
6	Defensive Line Breaks			8
57	Receptions in the Final Third			97
11	Crosses			11
22	Ball Progressions			16
196 (44)	Defensive Pressures Applied (Direct Pressures)			193 (46)
74	Forced Turnovers			81
83	Second Balls			82
112.6 km	Total Distance Covered			111.5 km
5.2 km	Zone 4 - Low Speed Sprinting: 19-23km/h			5.1 km



Australia

Phases of Play

Denmark



IN POSSESSION



OUT OF POSSESSION





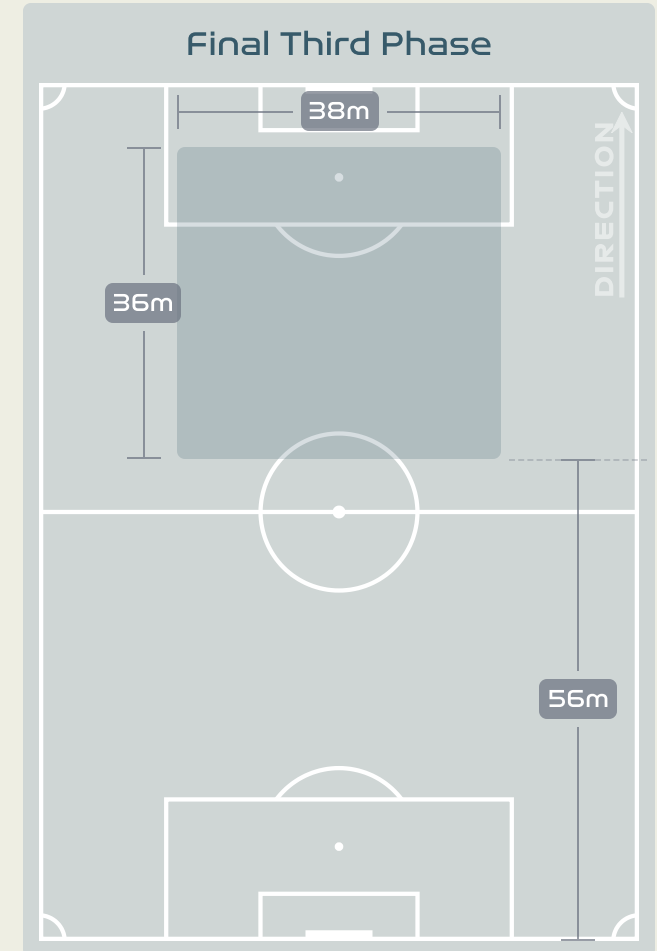
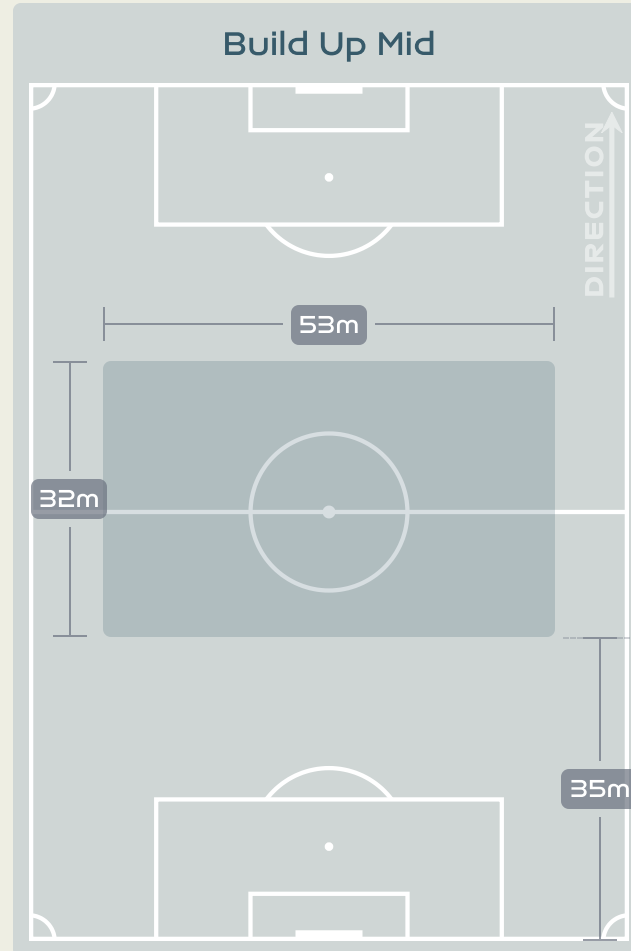
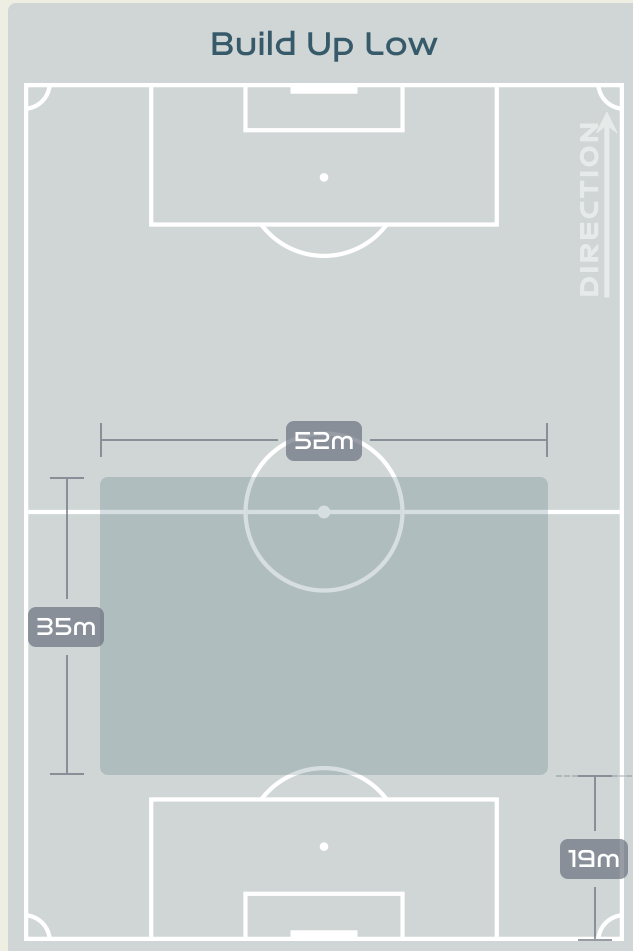
IN POSSESSION



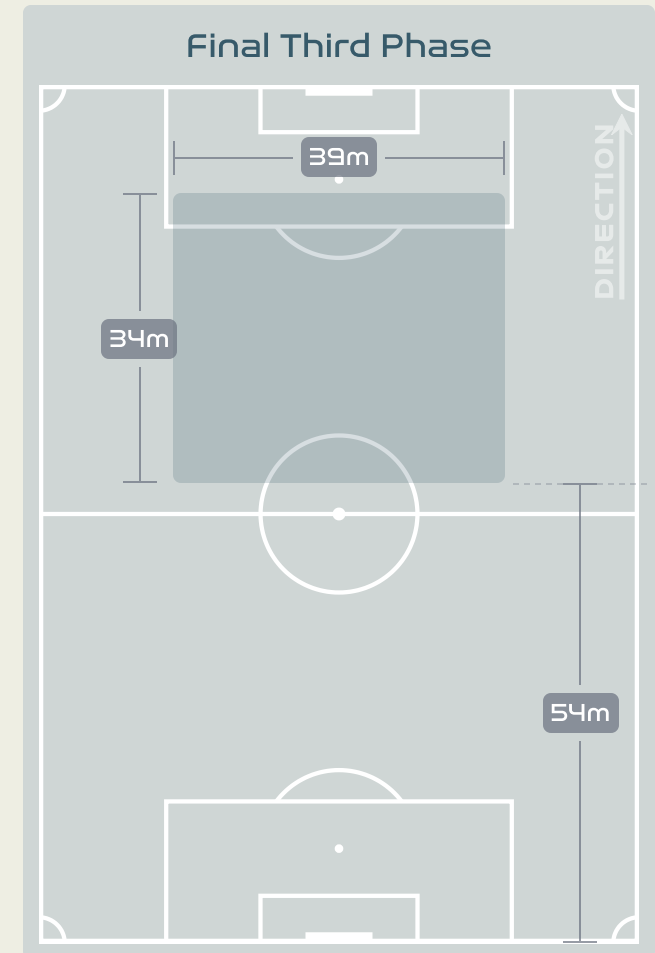
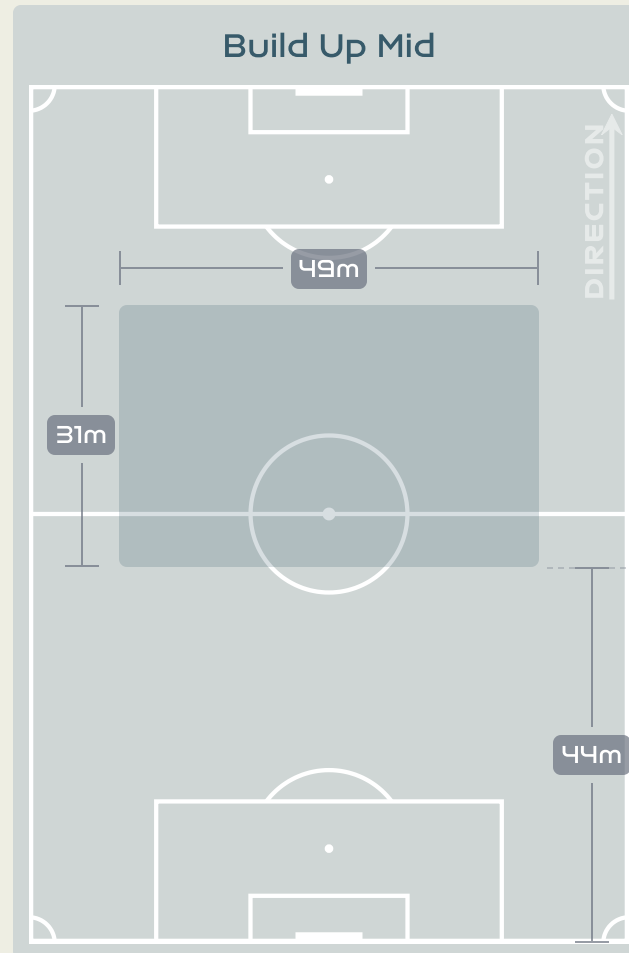
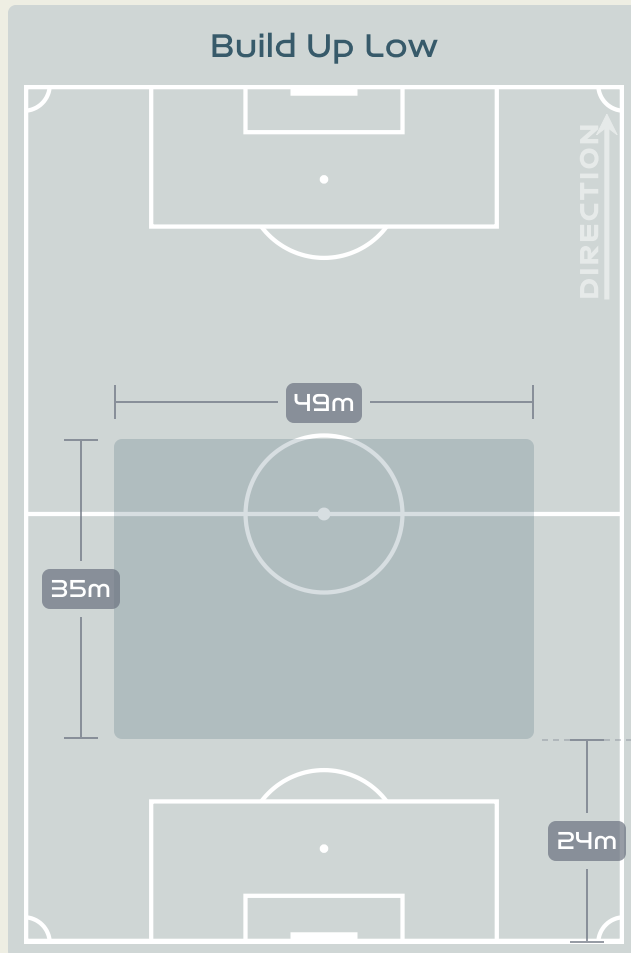
Australia v Denmark



In Possession Line Height & Team Length



In Possession Line Height & Team Length



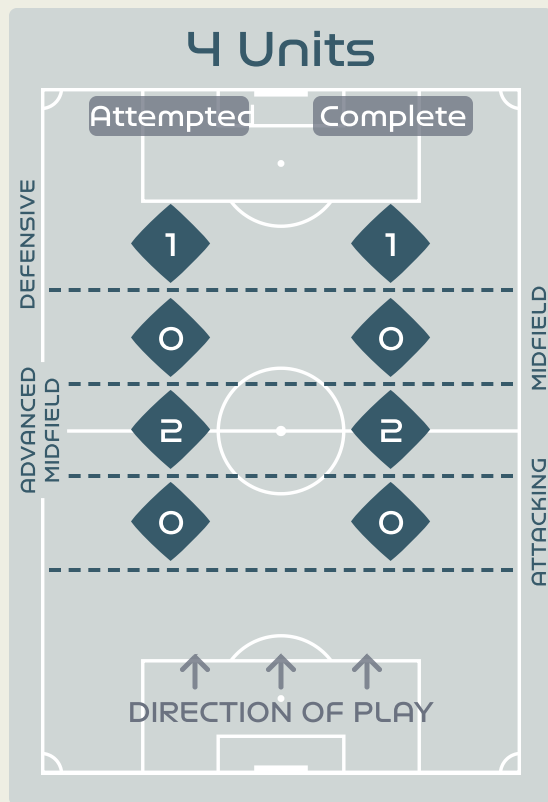
Line Breaks



Australia

Attempted Line Breaks

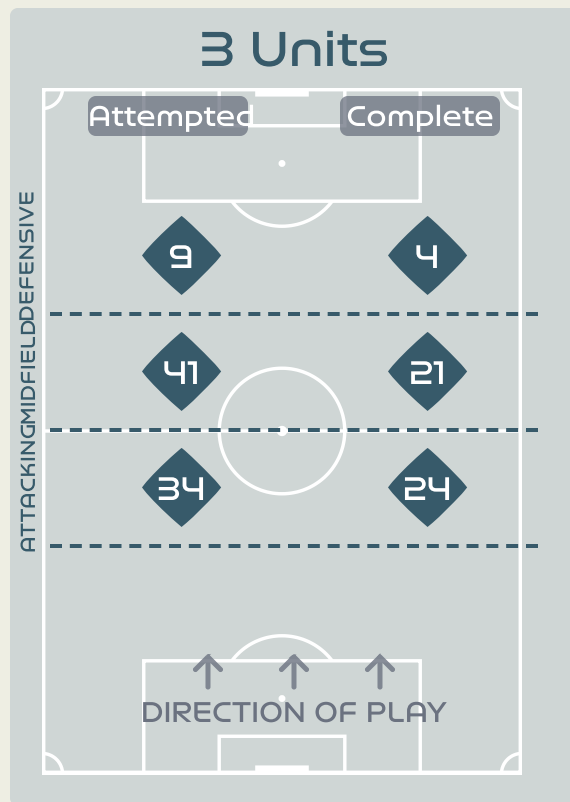
115



Attempted Line Breaks 3

Inside Shape 2

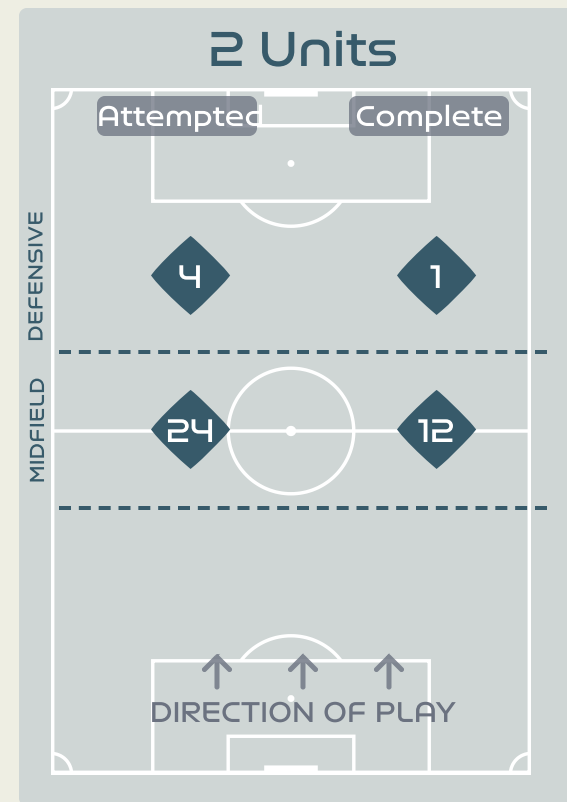
Outside Shape 1



Attempted Line Breaks 84

Inside Shape 56

Outside Shape 28



Attempted Line Breaks 28

Inside Shape 24

Outside Shape 4

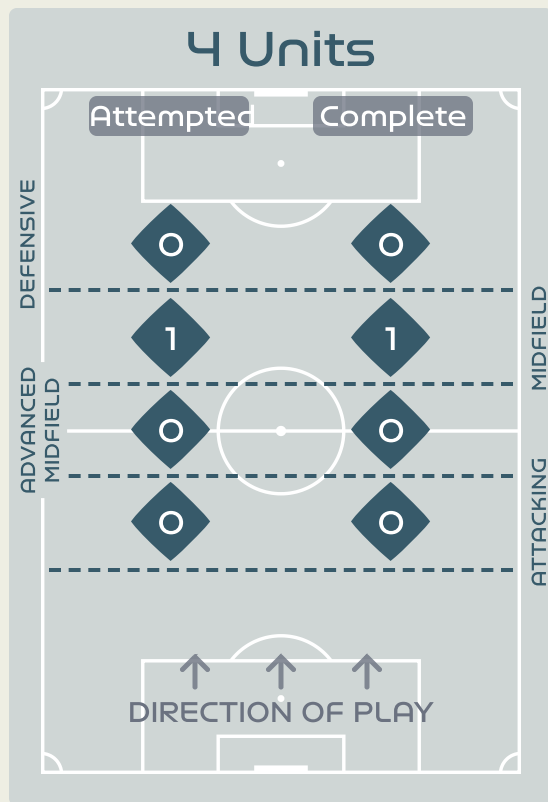
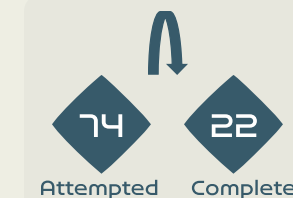
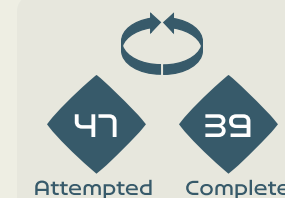
Line Breaks



Denmark

Attempted Line Breaks

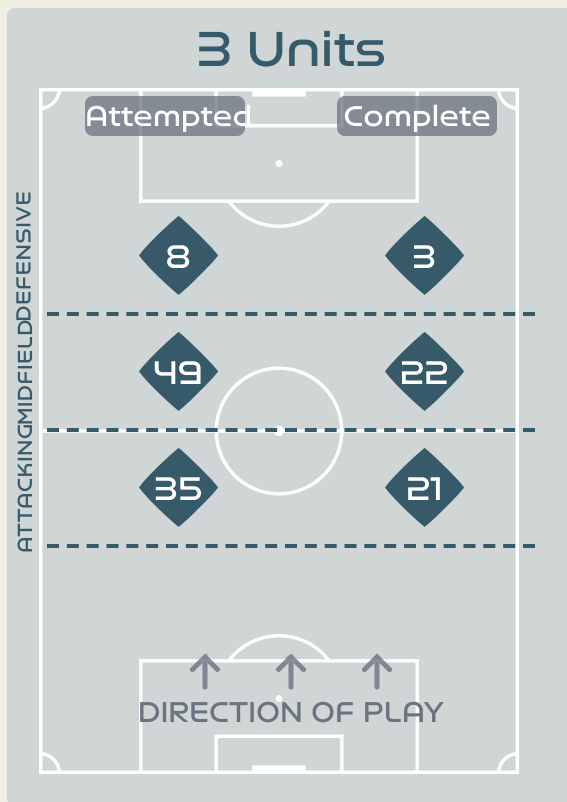
142



Attempted Line Breaks 1

Inside Shape 1

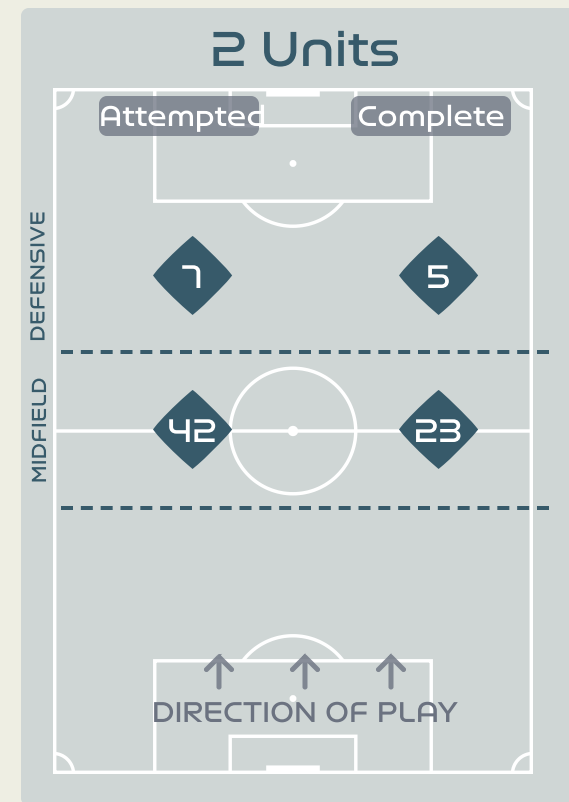
Outside Shape 0



Attempted Line Breaks 92

Inside Shape 59

Outside Shape 33



Attempted Line Breaks 49

Inside Shape 35

Outside Shape 14

Line Breaks



					4 Units				3 Units			2 Units		Direction			Distribution Type		
#	Player	Line Breaks Attempted	Line Breaks Completed	Line Break Completion %	Attacking Line	Attacking Midfield Line	Midfield Line	Defensive Line	Attacking Line	Midfield Line	Defensive Line	Midfield Line	Defensive Line	Through	Around	Over	Pass	Cross	Ball Progression
18	ARNOLD Mackenzie	24	5	20%	0	1	0	0	11	10	0	2	0	0	0	24	24	0	0
7	CATLEY Steph	12	7	58%	0	0	0	0	1	3	1	6	1	3	4	5	11	1	0
9	FOORD Caitlin	3	2	66%	0	0	0	0	0	1	0	1	1	2	1	0	3	0	0
10	VAN EGMOND Emily	7	5	71%	0	0	0	0	0	4	2	1	0	3	2	2	7	0	0
11	FOWLER Mary	2	2	100%	0	0	0	1	0	1	0	0	0	1	0	1	2	0	0
14	KENNEDY Alanna	6	4	66%	0	0	0	0	4	1	0	1	0	0	4	2	6	0	0
15	HUNT Clare	9	6	66%	0	0	0	0	6	1	1	1	0	4	3	2	9	0	0
16	RASO Hayley	2	0	0%	0	0	0	0	0	0	0	1	1	0	0	2	2	0	0
19	GORRY Katrina	13	9	69%	0	0	0	0	2	4	3	4	0	2	3	8	12	1	0
21	CARPENTER Ellie	25	14	56%	0	1	0	0	9	7	2	5	1	3	3	19	24	0	1
23	COONEY-CROSS Kyra	10	10	100%	0	0	0	0	1	7	0	2	0	8	0	2	8	0	2
4	POLKINGHORNE Clare	0	0	0%	0	0	0	0	0	0	0	0	0	0	0	0	0	0	0
5	VINE Cortnee	1	0	0%	0	0	0	0	0	1	0	0	0	0	1	0	0	0	1
13	YALLOP Tameka	0	0	0%	0	0	0	0	0	0	0	0	0	0	0	0	0	0	0
20	KERR Sam	1	1	100%	0	0	0	0	0	1	0	0	0	1	0	0	1	0	0

Line Breaks



					4 Units				3 Units			2 Units		Direction			Distribution Type		
#	Player	Line Breaks Attempted	Line Breaks Completed	Line Break Completion %	Attacking Line	Attacking Midfield Line	Midfield Line	Defensive Line	Attacking Line	Midfield Line	Defensive Line	Midfield Line	Defensive Line	Through	Around	Over	Pass	Cross	Ball Progression
1	CHRISTENSEN Lene	9	1	11%	0	0	0	0	6	2	0	1	0	1	0	8	9	0	0
3	BALLISAGER Stine	20	10	50%	0	0	0	0	7	8	2	3	0	2	4	14	20	0	0
4	SEVECKE Rikke	14	7	50%	0	0	0	0	3	5	0	5	1	1	4	9	14	0	0
5	BOYE Simone	18	8	44%	0	0	0	0	6	8	0	4	0	1	3	14	18	0	0
6	HOLMGAARD Karen	5	3	60%	0	0	0	0	0	4	0	1	0	2	1	2	5	0	0
9	VANGSGAARD Amalie	4	2	50%	0	0	0	0	0	3	1	0	0	1	1	2	4	0	0
10	HARDER Pernille	7	5	71%	0	0	0	0	0	3	1	3	0	2	2	3	7	0	0
11	VEJE Katrine	32	21	65%	0	0	0	0	9	4	1	15	3	3	18	11	30	1	1
12	KUHL Kathrine	5	1	20%	0	0	0	0	0	2	0	2	1	1	1	3	5	0	0
17	MADSEN Rikke Marie	6	2	33%	0	0	1	0	0	5	0	0	0	3	3	0	6	0	0
19	THOMSEN Janni	10	7	70%	0	0	0	0	2	2	2	4	0	1	5	4	6	4	0
2	HASBO Josefine	3	2	66%	0	0	0	0	1	0	1	1	0	1	1	1	3	0	0
7	TROELSGAARD Sanne	2	1	50%	0	0	0	0	0	1	0	0	1	0	1	1	2	0	0
8	SNERLE Emma	3	3	100%	0	0	0	0	0	1	0	1	1	1	2	0	2	0	1
20	BRUUN Signe	0	0	0%	0	0	0	0	0	0	0	0	0	0	0	0	0	0	0
21	GEJL Mille	4	2	50%	0	0	0	0	1	1	0	2	0	1	1	2	4	0	0

Passing Networks



#	Passes From ↓ to →	ARNOLD Mackenzie	CATLEY Steph	FOORD Caitlin	VAN EGMOND Emily	FOWLER Mary	KENNEDY Alanna	HUNT Clare	RASO Hayley	GORRY Katrina	CARPENTER Ellie	COONEY-CROSS Kyra	POLKINGHORNE Clare	VINE Cortnee	YALLOP Tameka	KERR Sam
18	ARNOLD Mackenzie		0	0	3	0	3	4	0	0	2	0	0	0	0	0
7	CATLEY Steph	0		6	0	1	8	0	0	2	0	3	0	0	0	0
9	FOORD Caitlin	0	6		0	2	0	0	1	2	0	1	0	0	0	1
10	VAN EGMOND Emily	0	0	3		1	0	0	7	2	3	0	0	0	0	0
11	FOWLER Mary	0	4	2	1		0	1	1	4	1	1	0	0	0	0
14	KENNEDY Alanna	3	5	0	1	1		10	0	4	0	9	0	0	0	0
15	HUNT Clare	12	0	0	0	0	15		1	7	3	2	0	0	0	0
16	RASO Hayley	0	1	0	3	1	0	3		4	2	1	0	0	0	0
19	GORRY Katrina	0	4	4	5	4	5	6	3		4	2	0	0	0	0
21	CARPENTER Ellie	2	0	0	4	0	0	7	3	2		2	0	1	0	0
23	COONEY-CROSS Kyra	0	5	3	4	3	2	3	2	6	2		0	1	0	2
4	POLKINGHORNE Clare	0	0	0	0	0	0	0	0	0	0	0		0	0	0
5	VINE Cortnee	0	0	0	0	0	0	0	0	0	0	1	0		0	0
13	YALLOP Tameka	0	0	0	0	0	0	0	0	0	0	0	0	0		0
20	KERR Sam	0	0	2	0	0	0	0	0	0	0	0	0	0	0	

Top 5 Player to Player Passers		
Player	Passed To	% of Total Team Passes
HUNT Clare	KENNEDY Alanna	5.8%
HUNT Clare	ARNOLD Mackenzie	4.7%
KENNEDY Alanna	HUNT Clare	3.9%
KENNEDY Alanna	COONEY-CROSS Kyra	3.5%
CATLEY Steph	KENNEDY Alanna	3.1%

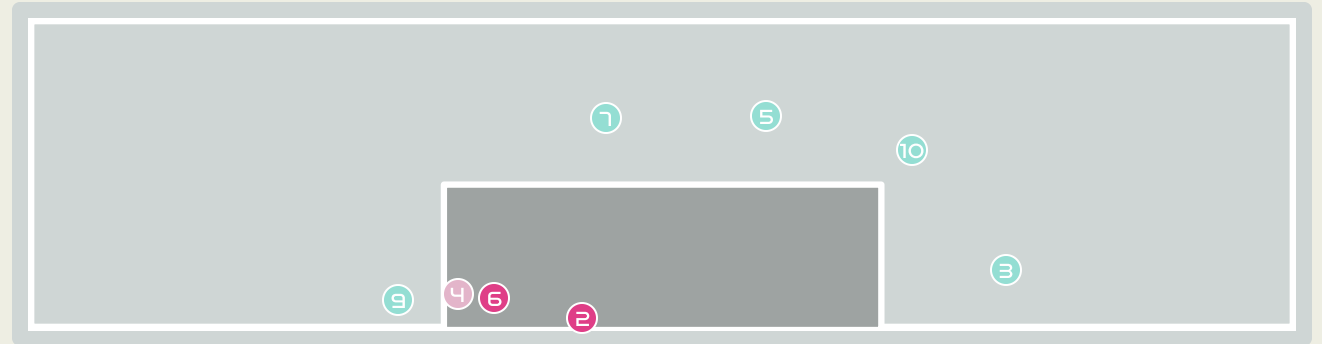
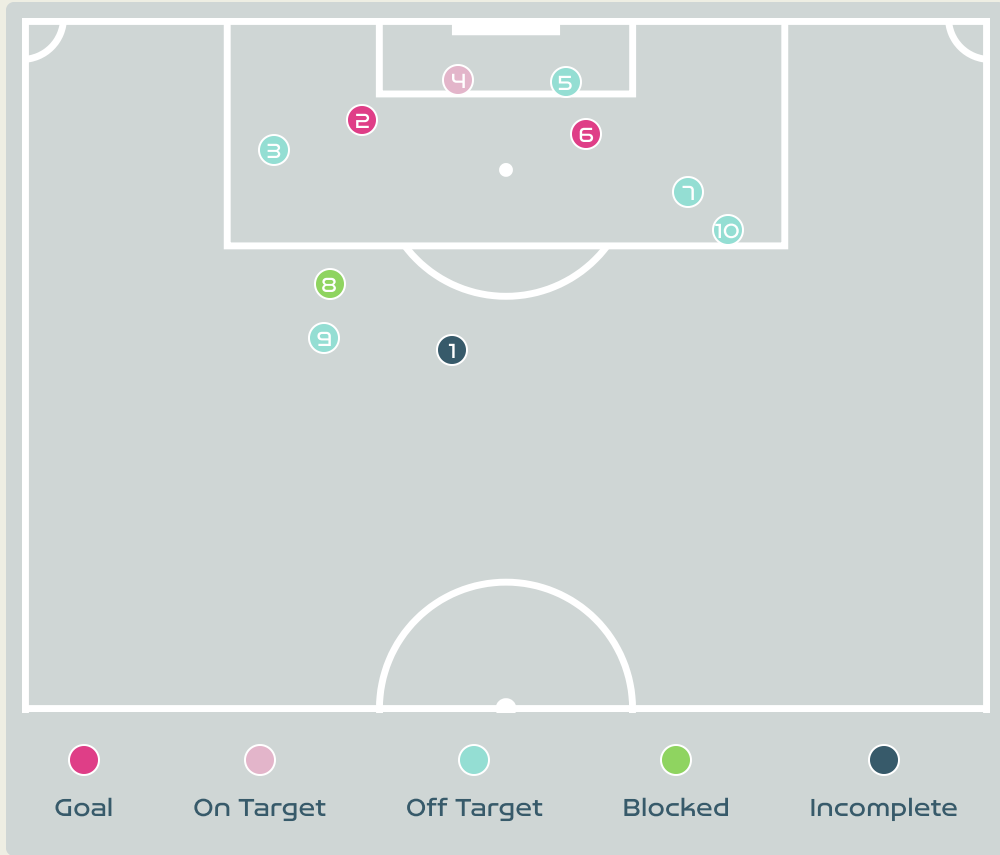
Passing Networks








#	Passes From ↓ to →	CHRISTENSEN Lene	BALLISAGER Stine	SEVECKE Rikke	BOYE Simone	HOLMGAARD Karen	VANGSGAARD Amalie	HARDER Pernille	VEJE Katrine	KUHL Kathrine	MADSEN Rikke Marie	THOMSEN Janni	HASBO Josefine	TROELSGAARD Sanne	SNERLE Emma	BRUUN Signe	GEJL Mille
1	CHRISTENSEN Lene		8	0	7	0	0	1	1	0	0	0	0	0	0	0	0
3	BALLISAGER Stine	5		13	28	3	1	0	5	0	2	4	1	0	0	2	0
4	SEVECKE Rikke	0	11		0	0	1	2	0	0	0	1	0	0	0	0	0
5	BOYE Simone	3	28	1		1	0	2	29	4	2	0	1	0	0	1	0
6	HOLMGAARD Karen	1	8	0	3		0	3	5	2	1	1	0	0	0	0	0
9	VANGSGAARD Amalie	0	1	0	1	0		1	0	1	0	3	0	0	0	1	0
10	HARDER Pernille	0	0	2	1	1	3		2	5	4	1	0	1	0	2	0
11	VEJE Katrine	1	4	0	20	2	1	5		8	10	0	1	0	0	1	4
12	KUHL Kathrine	0	2	0	5	5	0	1	9		0	1	0	0	0	0	0
17	MADSEN Rikke Marie	0	1	0	2	1	0	5	6	4		0	0	0	0	0	0
19	THOMSEN Janni	0	1	0	2	3	2	0	0	0	0		0	0	0	0	0
2	HASBO Josefine	0	0	0	2	0	0	1	1	0	0	2		1	0	0	1
7	TROELSGAARD Sanne	0	0	0	0	0	0	2	0	0	0	1	0		1	0	0
8	SNERLE Emma	0	0	0	0	0	0	0	0	0	0	0	0	3		0	0
20	BRUUN Signe	0	0	0	0	2	1	2	0	0	0	0	1	0	0		0
21	GEJL Mille	0	0	0	2	0	0	1	2	1	0	0	1	0	0	0	

Top 5 Player to Player Passers		
Player	Passed To	% of Total Team Passes
BOYE Simone	VEJE Katrine	8.1%
BALLISAGER Stine	BOYE Simone	7.8%
BOYE Simone	BALLISAGER Stine	7.8%
VEJE Katrine	BOYE Simone	5.6%
BALLISAGER Stine	SEVECKE Rikke	3.6%

Attempts at Goal



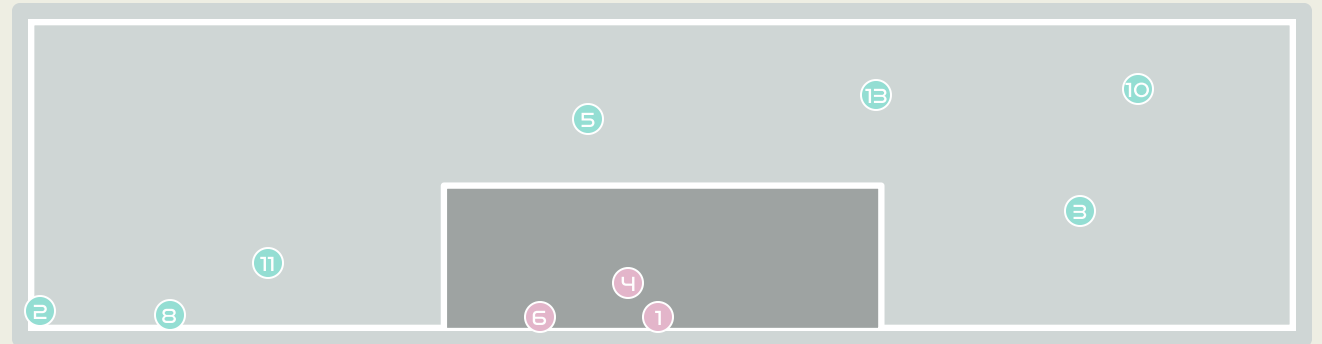
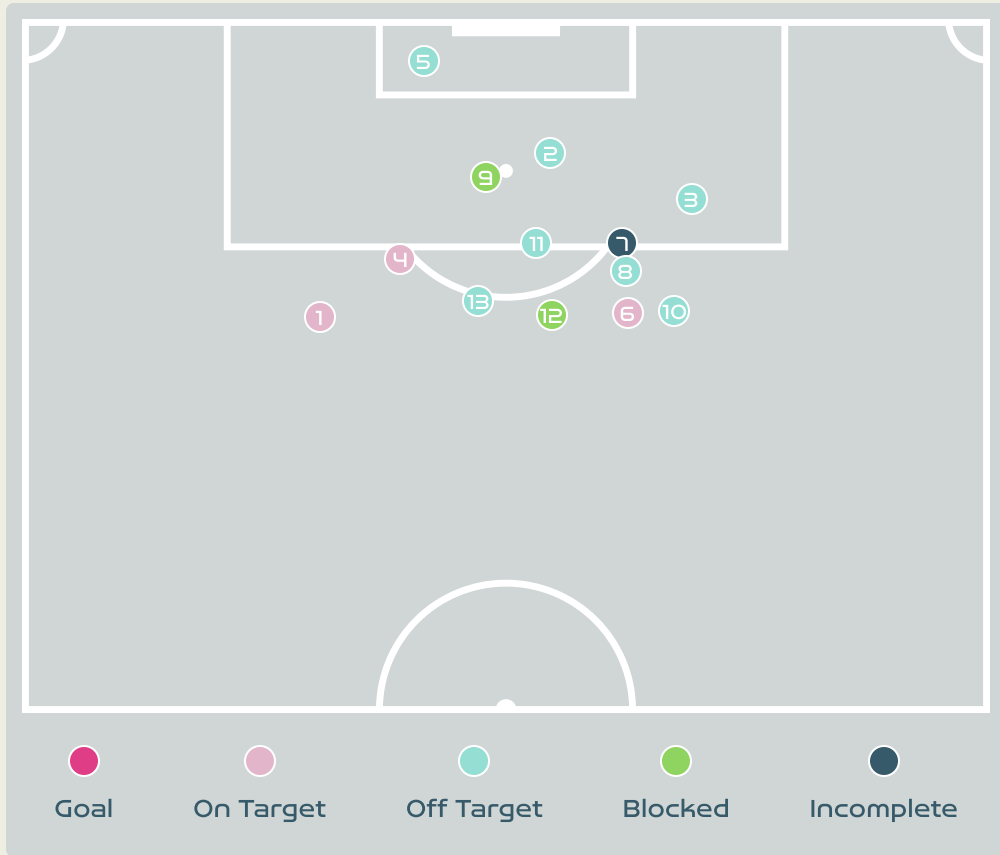
Key	Outcome	Shots
	Goals	2
	On Target	1
	Off Target	5
	Blocked	1
	Incomplete	1






Attempts at Goal



Time	Player	Outcome	Body Part	Delivery Type
8	19 GORRY Katrina	Incomplete - Defensive Event	Left Foot	Pass
28	9 FOORD Caitlin	On Target - Goal	Left Foot	Pass
37	9 FOORD Caitlin	Off Target	Right Foot	Pass
64	10 VAN EGMOND Emily	Deflected On Target - Saved	Left Foot	Cross
67	14 KENNEDY Alanna	Deflected Off Target - Defensive Event	Head	Corner
70	16 RASO Hayley	On Target - Goal	Right Foot	Pass
86	20 KERR Sam	Off Target	Right Foot	Other
89	9 FOORD Caitlin	Incomplete - Blocked	Right Foot	Pass
89	19 GORRY Katrina	Off Target	Right Foot	Pass
91	21 CARPENTER Ellie	Off Target	Right Foot	Ball Progression

Attempts at Goal



Key	Outcome	Shots
	Goals	0
	On Target	3
	Off Target	7
	Blocked	2
	Incomplete	1

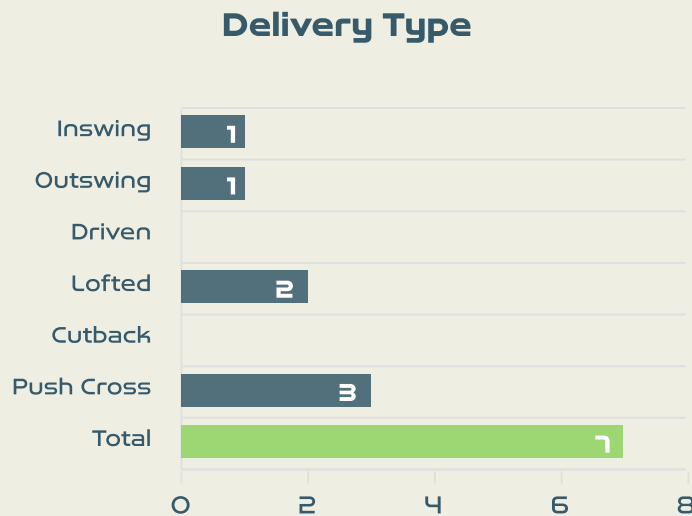
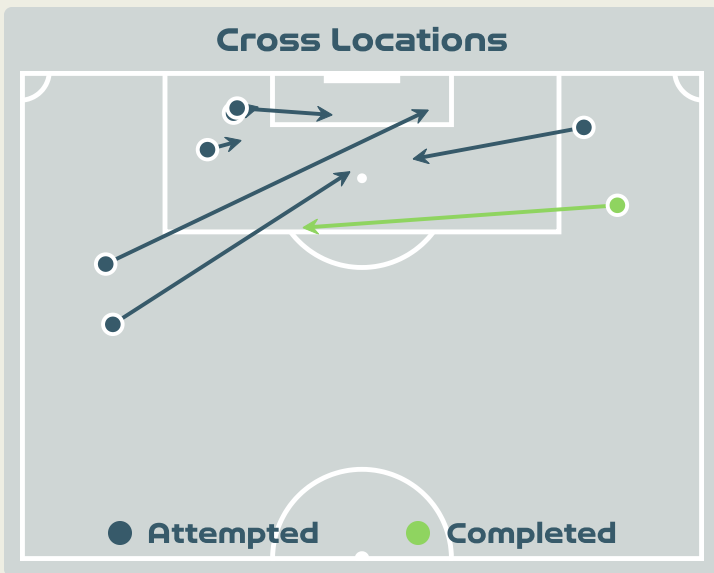
Attempts at Goal



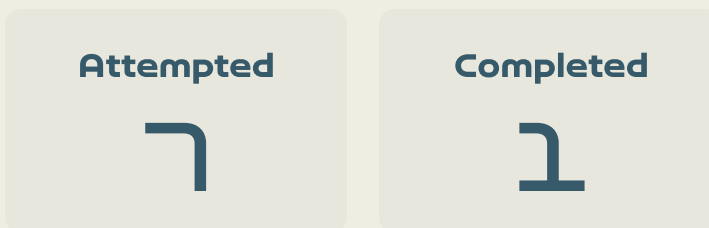
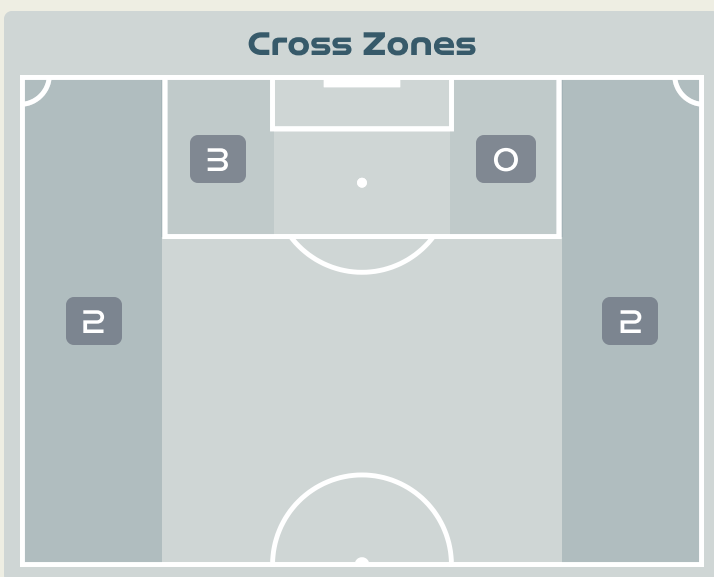
Time	Player	Outcome	Body Part	Delivery Type
0	11 VEJE Katrine	On Target - Saved	Left Foot	Loose Ball
8	17 MADSEN Rikke Marie	Off Target	Right Foot	Cross
9	10 HARDER Pernille	Off Target	Right Foot	Pass
16	10 HARDER Pernille	On Target - Saved	Right Foot	Pass
32	5 BOYE Simone	Off Target	Head	Corner
56	10 HARDER Pernille	On Target - Saved	Right Foot	Pass
63	12 KUHL Kathrine	Incomplete - Player On Ball Error	Right Foot	Pass
71	12 KUHL Kathrine	Off Target	Right Foot	Ball Progression
76	10 HARDER Pernille	Incomplete - Blocked	Right Foot	Loose Ball
80	19 THOMSEN Janni	Off Target	Right Foot	Loose Ball
85	10 HARDER Pernille	Off Target	Right Foot	Loose Ball
88	8 SNERLE Emma	Incomplete - Blocked	Left Foot	Loose Ball
95	20 BRUUN Signe	Off Target	Right Foot	Other



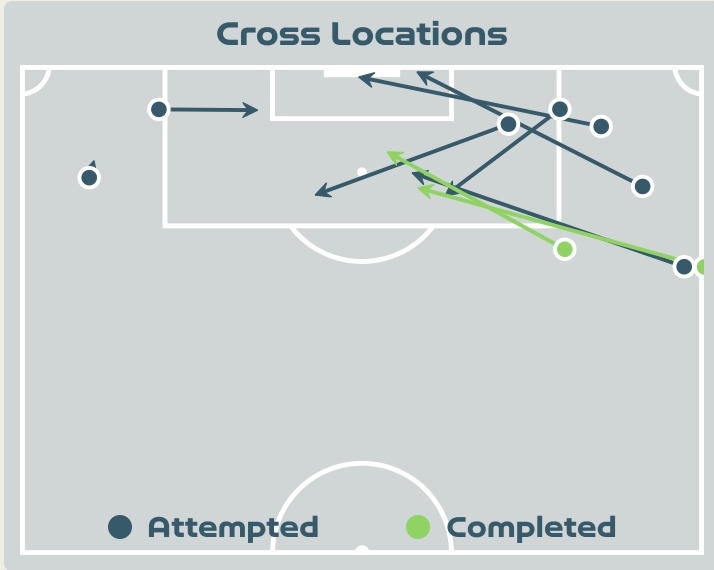
Crosses (Open Play)



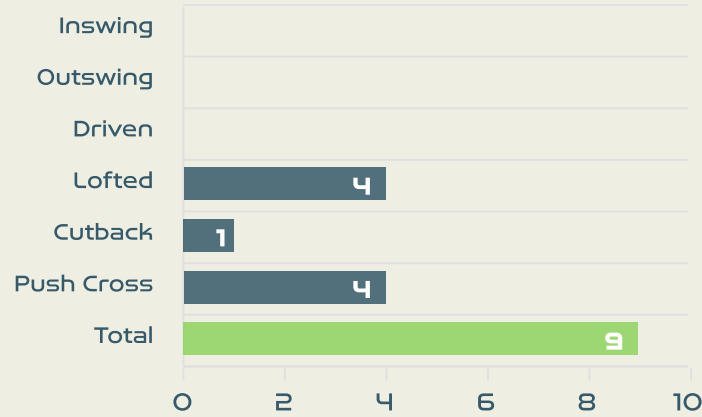
#	Player	Inswing	Outswing	Driven	Lofted	Cutback	Push Cross	Total Attempted
18	ARNOLD Mackenzie	0	0	0	0	0	0	0
7	CATLEY Steph	0	1	0	0	0	1	2
9	FOORD Caitlin	0	0	0	0	0	2	2
10	VAN EGMOND Emily	0	0	0	0	0	0	0
11	FOWLER Mary	0	0	0	0	0	0	0
14	KENNEDY Alanna	0	0	0	0	0	0	0
15	HUNT Clare	0	0	0	0	0	0	0
16	RASO Hayley	0	0	0	0	0	0	0
19	GORRY Katrina	1	0	0	0	0	0	1
21	CARPENTER Ellie	0	0	0	2	0	0	2
23	COONEY-CROSS Kyra	0	0	0	0	0	0	0
4	POLKINGHORNE Clare	0	0	0	0	0	0	0
5	VINE Cortnee	0	0	0	0	0	0	0
13	YALLOP Tameka	0	0	0	0	0	0	0
20	KERR Sam	0	0	0	0	0	0	0



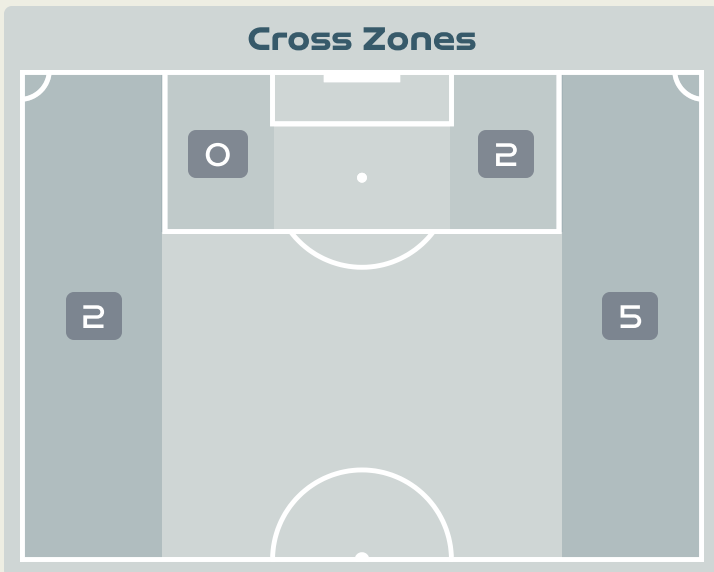
Crosses (Open Play)



Delivery Type



#	Player	Inswing	Outswing	Driven	Lofted	Cutback	Push Cross	Total Attempted
1	CHRISTENSEN Lene	0	0	0	0	0	0	0
3	BALLISAGER Stine	0	0	0	0	0	0	0
4	SEVECKE Rikke	0	0	0	0	0	0	0
5	BOYE Simone	0	0	0	0	0	0	0
6	HOLMGAARD Karen	0	0	0	0	0	0	0
9	VANGSGAARD Amalie	0	0	0	0	0	0	0
10	HARDER Pernille	0	0	0	0	0	0	0
11	VEJE Katrine	0	0	0	1	0	1	2
12	KUHL Kathrine	0	0	0	0	0	0	0
17	MADSEN Rikke Marie	0	0	0	0	0	1	1
19	THOMSEN Janni	0	0	0	2	1	2	5
2	HASBO Josefine	0	0	0	0	0	0	0
7	TROELSGAARD Sanne	0	0	0	1	0	0	1
8	SNERLE Emma	0	0	0	0	0	0	0
20	BRUUN Signe	0	0	0	0	0	0	0
21	GEJL Mille	0	0	0	0	0	0	0



Attempted

9

Completed

2

Most Crosses Attempted

5

THOMSEN Janni
RIGHT MIDFIELD



Offering to Receive

294

Total Offers Made

100

Total Offers Received

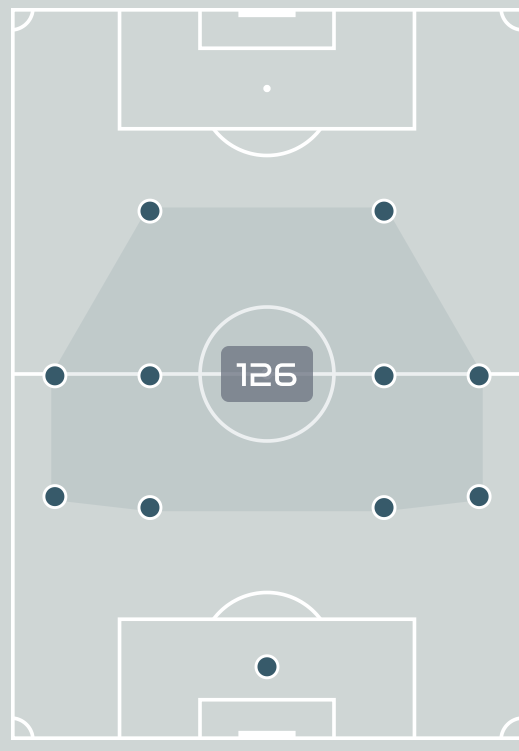
Most Offers

46

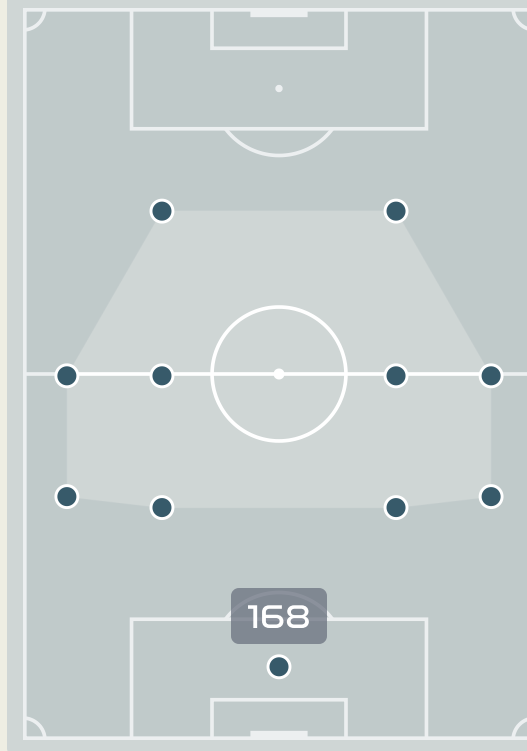
FOORD Caitlin
LEFT MIDFIELD

#	Player	Offers Made	Offers Received	% Made & Received
18	ARNOLD Mackenzie	12	6	50%
7	CATLEY Steph	25	4	16%
9	FOORD Caitlin	46	16	34.8%
10	VAN EGMOND Emily	21	9	42.9%
11	FOWLER Mary	31	7	22.6%
14	KENNEDY Alanna	7	4	57.1%
15	HUNT Clare	12	9	75%
16	RASO Hayley	16	4	25%
19	GORRY Katrina	45	18	40%
21	CARPENTER Ellie	29	5	17.2%
23	COONEY-CROSS Kyra	41	15	36.6%
4	POLKINGHORNE Clare	0	0	0%
5	VINE Cortnee	1	1	100%
13	YALLOP Tameka	0	0	0%
20	KERR Sam	8	2	25%

Offers Made Inside Shape



Offers Made Outside Shape



88

Offers Made in Final Third

119

Offers Made in Middle Third

87

Offers Made in Defensive Third

Offering to Receive

408

Total Offers Made

135

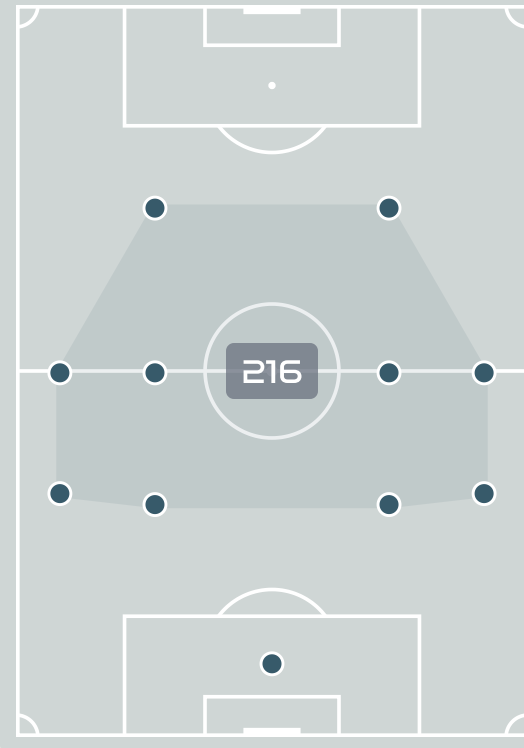
Total Offers Received

Most Offers

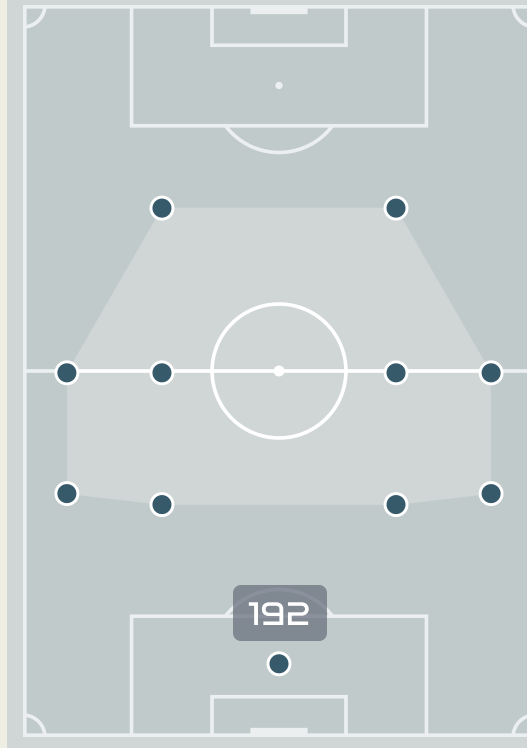
75

KUHL Kathrine
LEFT CENTRE MIDFIELD

Offers Made Inside Shape



Offers Made Outside Shape



168

Offers Made in Final Third

196

Offers Made in Middle Third

44

Offers Made in Defensive Third

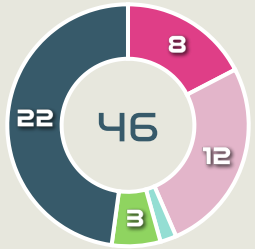
#	Player	Offers Made	Offers Received	% Made & Received
1	CHRISTENSEN Lene	10	7	70%
3	BALLISAGER Stine	38	24	63.2%
4	SEVECKE Rikke	21	6	28.6%
5	BOYE Simone	13	12	92.3%
6	HOLMGAARD Karen	13	2	15.4%
9	VANGSGAARD Amalie	28	6	21.4%
10	HARDER Pernille	67	15	22.4%
11	VEJE Katrine	25	13	52%
12	KUHL Kathrine	75	23	30.7%
17	MADSEN Rikke Marie	39	9	23.1%
19	THOMSEN Janni	34	4	11.8%
2	HASBO Josefine	19	5	26.3%
7	TROELSGAARD Sanne	1	1	100%
8	SNERLE Emma	2	1	50%
20	BRUUN Signe	15	5	33.3%
21	GEJL Mille	8	2	25%



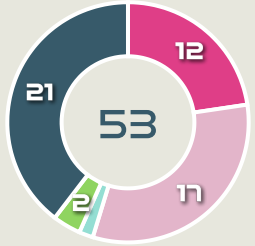
Movement to Receive

Movement Types by Phase

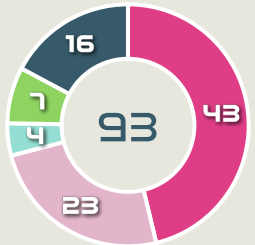
Final Third Phase



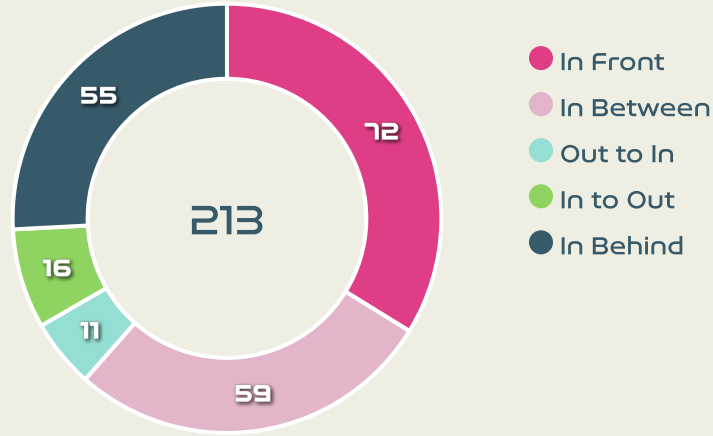
Progression Phase



Build Up Phase



All Movement Types

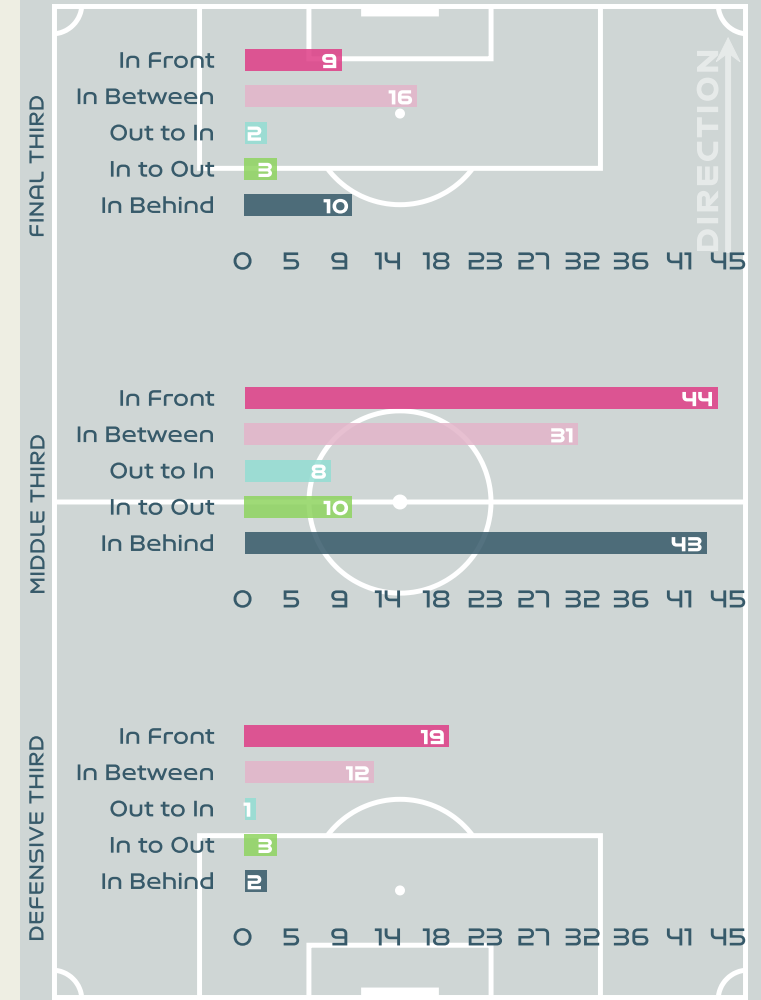


- In Front
- In Between
- Out to In
- In to Out
- In Behind

Top Ranked Players

Type	Player	Movements
In Front	19 GORRY Katrina	23
In Between	11 FOWLER Mary	17
Out to In	9 FOORD Caitlin	4
In to Out	23 COONEY-CROSS Kyra	6
In Behind	9 FOORD Caitlin	23

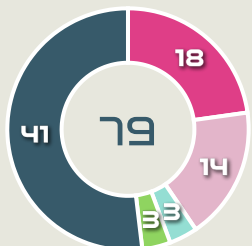
Movement Types Pitch Third



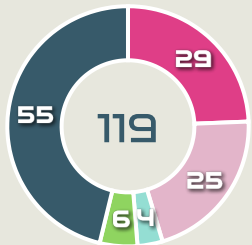
Movement to Receive

Movement Types by Phase

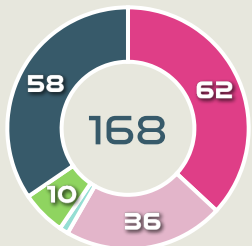
Final Third Phase



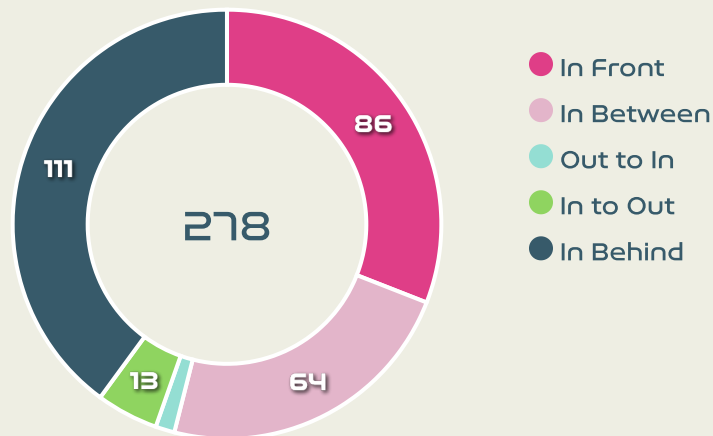
Progression Phase



Build Up Phase



All Movement Types

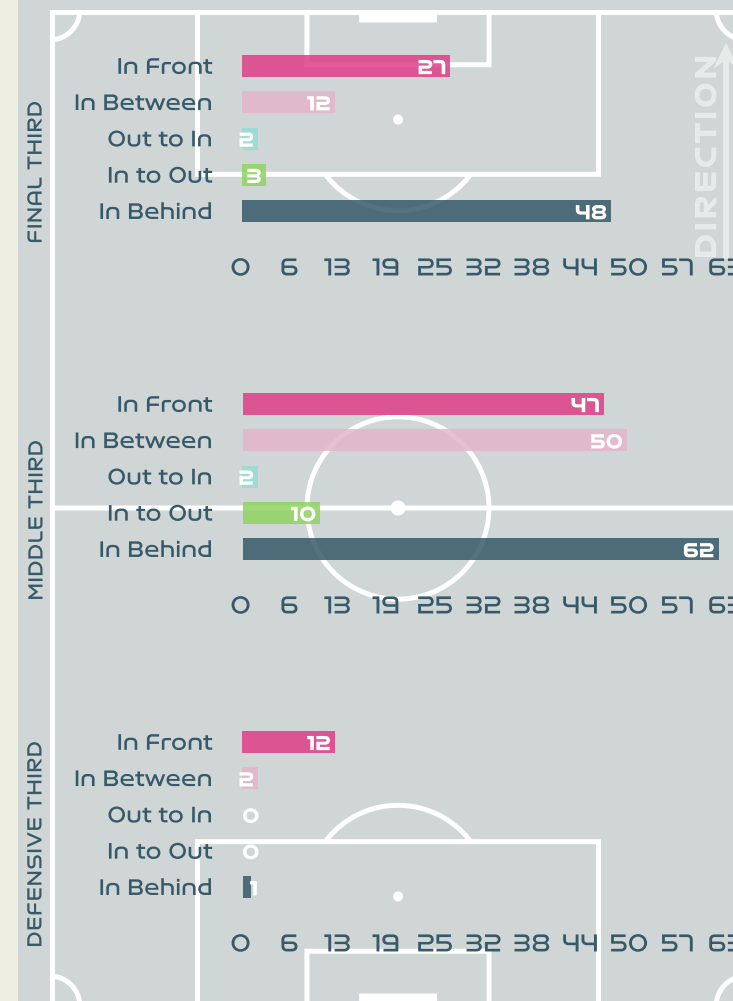


- In Front
- In Between
- Out to In
- In to Out
- In Behind

Top Ranked Players

Type	Player	Movements
In Front	12 KUHL Kathrine	41
In Between	12 KUHL Kathrine	26
Out to In	12 KUHL Kathrine	1
In to Out	10 HARDER Pernille	7
In Behind	10 HARDER Pernille	24

Movement Types Pitch Third





OUT OF POSSESSION



Australia v Denmark





Defensive Actions

74

Forced Turnovers

57

Possession Regained

10

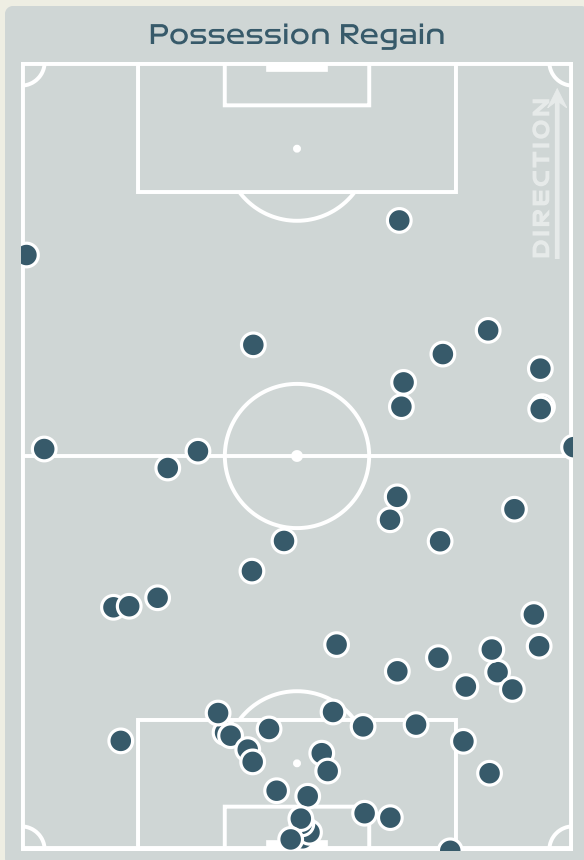
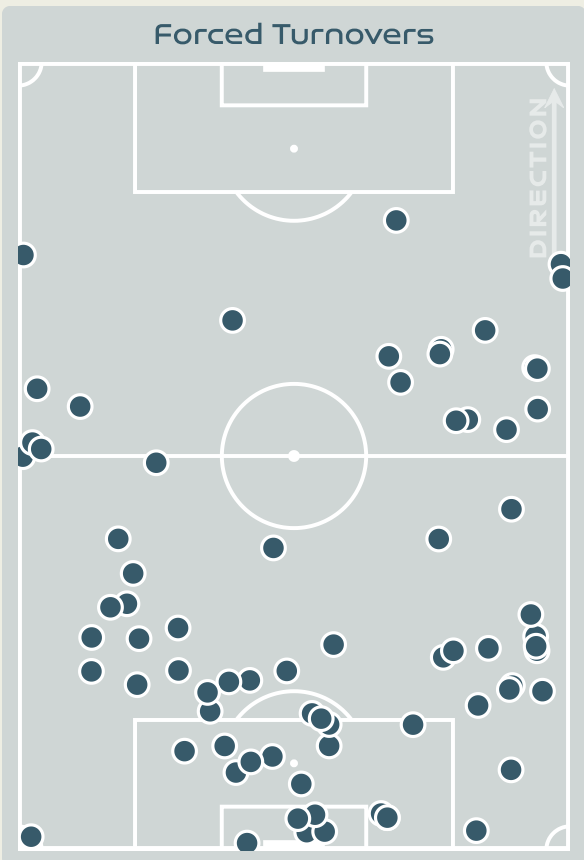
Interceptions

27

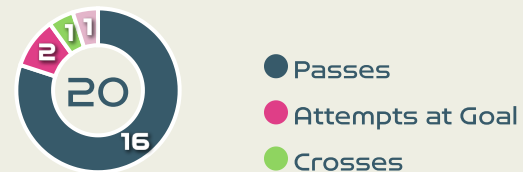
Tackles

3.01

Possession Actions / Defensive Action



Blocks



Possession Contests



Most Possession Regains

11

CARPENTER Ellie
RIGHT BACK

#	Player	Total Possession Regains
18	ARNOLD Mackenzie	9
7	CATLEY Steph	2
9	FOORD Caitlin	1
10	VAN EGMOND Emily	1
11	FOWLER Mary	2
14	KENNEDY Alanna	10
15	HUNT Clare	9
16	RASO Hayley	3
19	GORRY Katrina	7
21	CARPENTER Ellie	11
23	COONEY-CROSS Kyra	1
4	POLKINGHORNE Clare	0
5	VINE Cortnee	1
13	YALLOP Tameka	0
20	KERR Sam	0



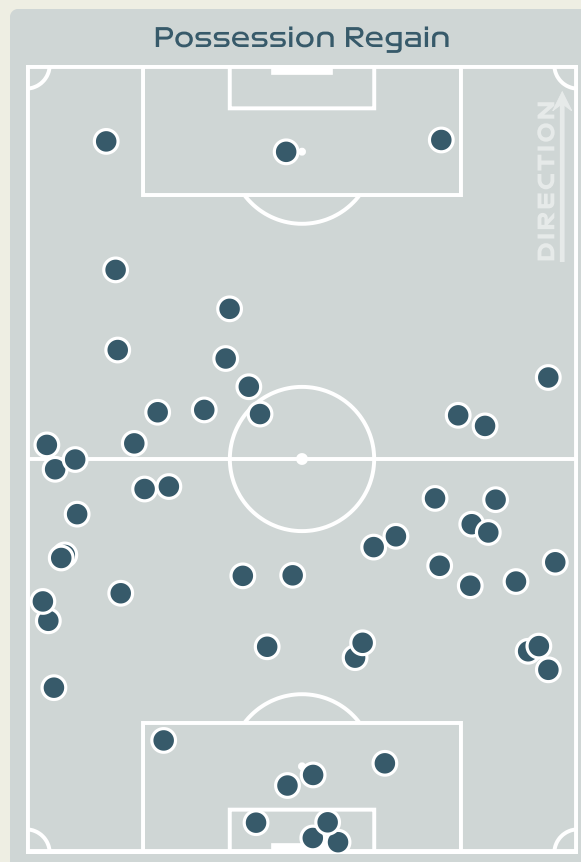
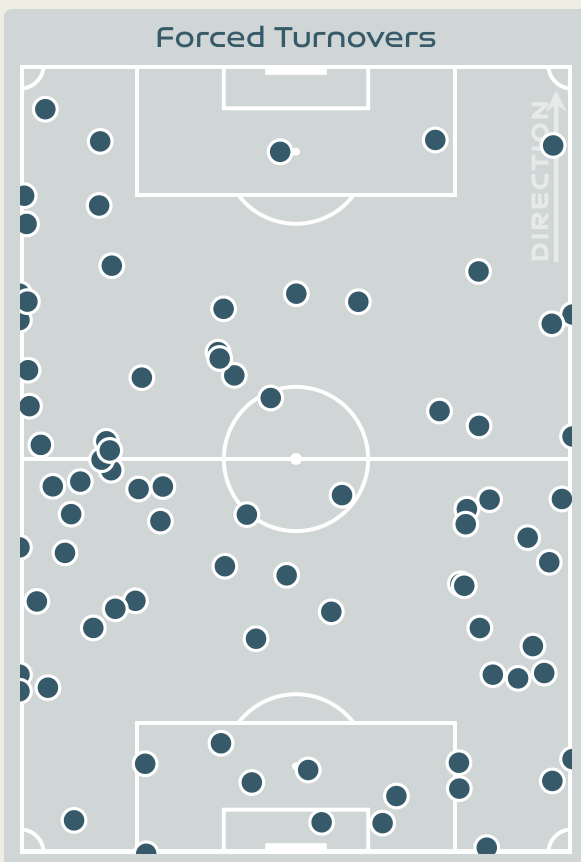
Defensive Actions



Blocks



#	Player	Total Possession Regains
1	CHRISTENSEN Lene	3
3	BALLISAGER Stine	6
4	SEVECKE Rikke	3
5	BOYE Simone	7
6	HOLMGAARD Karen	5
9	VANGSGAARD Amalie	1
10	HARDER Pernille	2
11	VEJE Katrine	7
12	KUHL Kathrine	4
17	MADSEN Rikke Marie	5
19	THOMSEN Janni	5
2	HASBO Josefine	2
7	TROELSGAARD Sanne	1
8	SNERLE Emma	1
20	BRUUN Signe	1
21	GEJL Mille	1



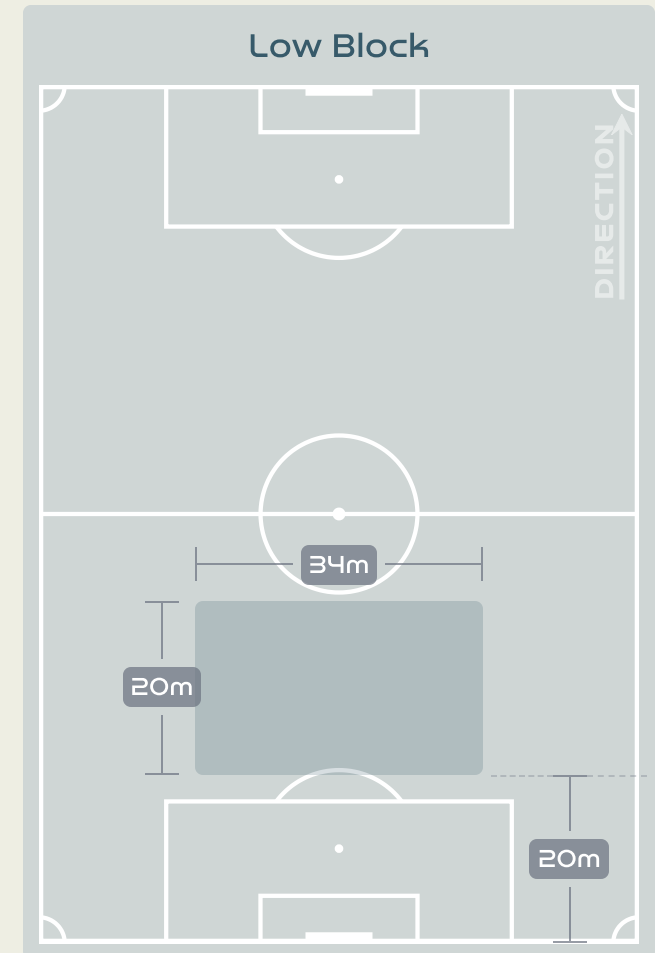
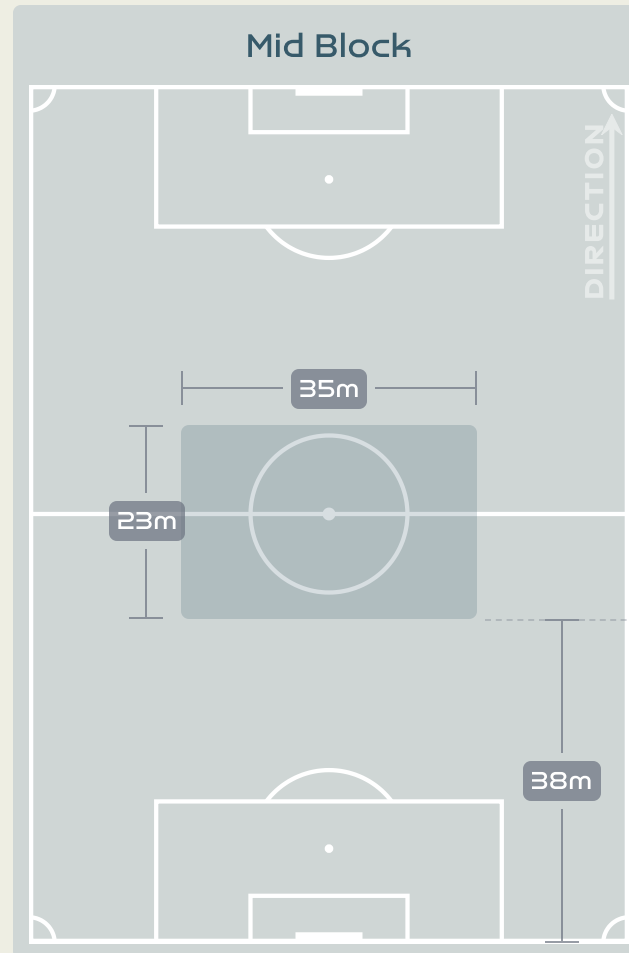
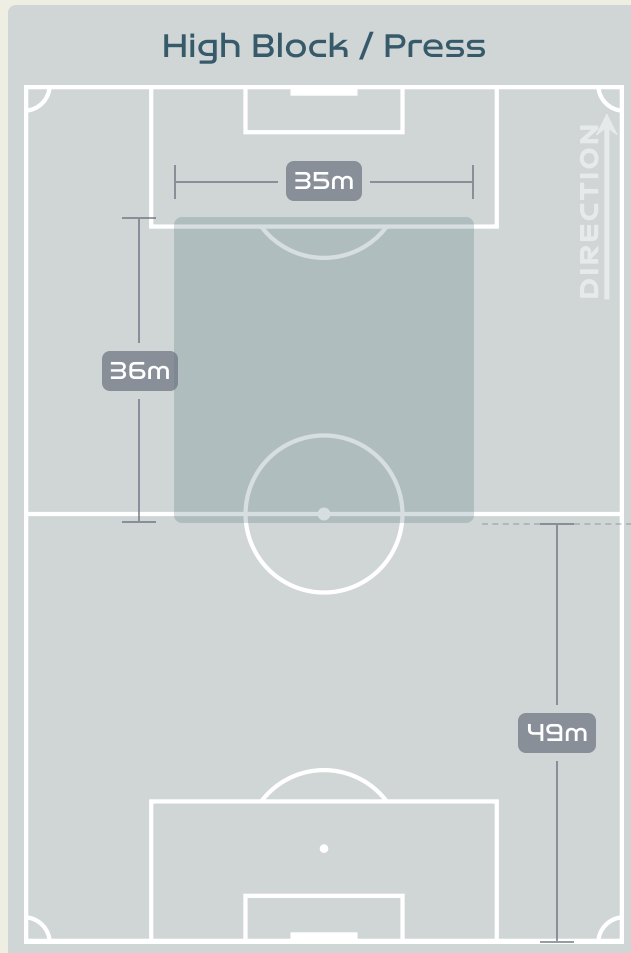
Possession Contests



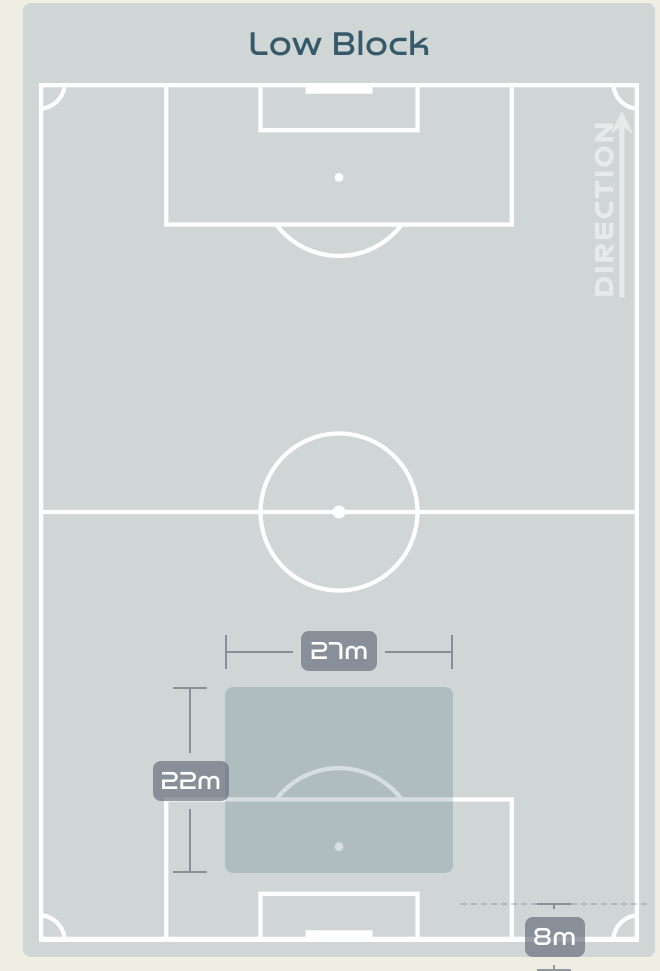
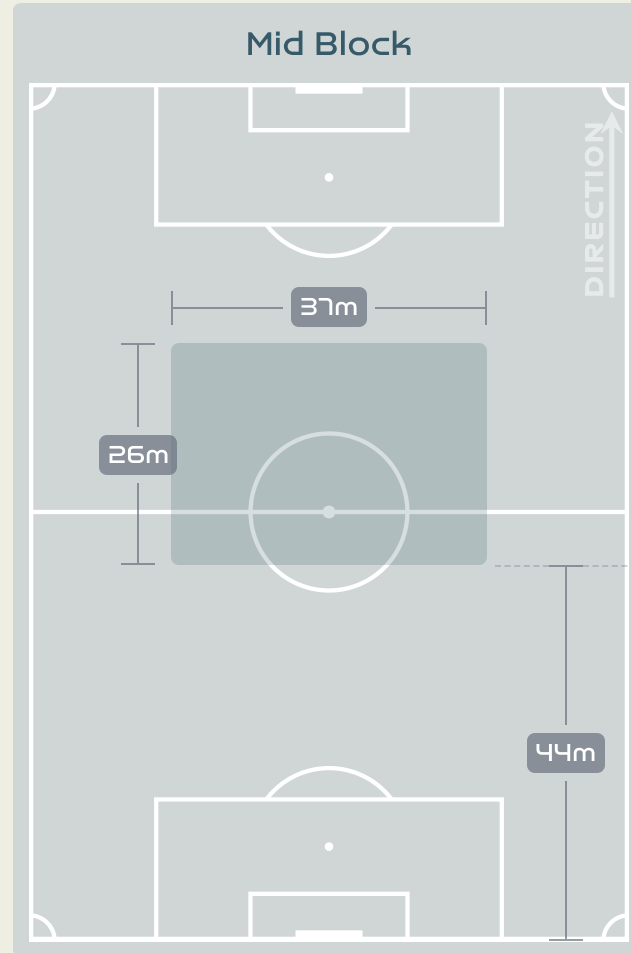
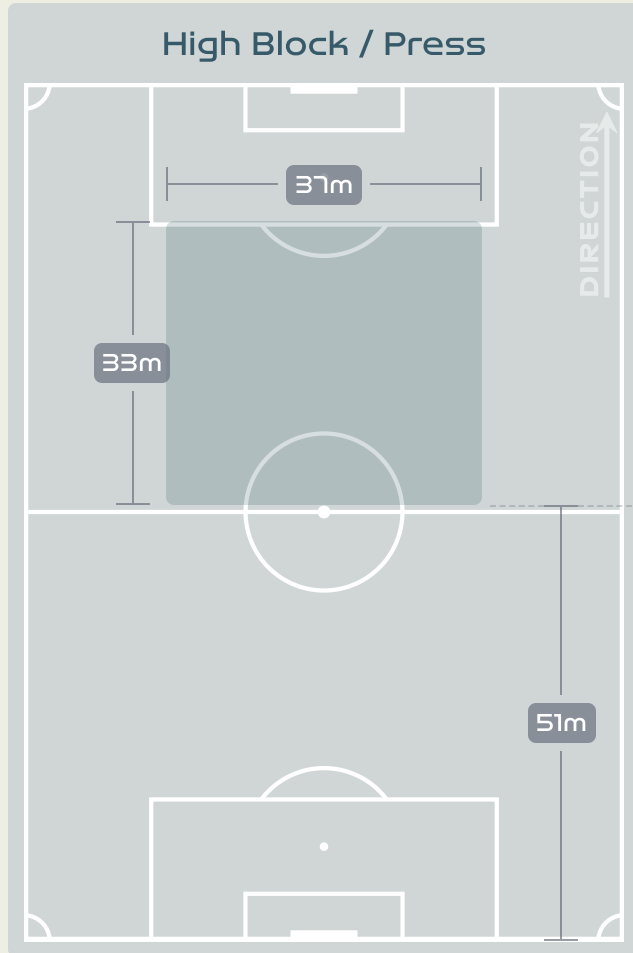
Most Possession Regains

BOYE Simone
LEFT CENTRE BACK

Defensive Line Height & Team Length



Defensive Line Height & Team Length



Defensive Pressure



196	Total Pressures	193
44	Direct Pressures	46
1.4s	Avg Pressure Duration	1.47s
74	Forced Turnovers	81
12.86s	Ball Recovery Time	7.36s
64	Pushing on into Pressing	63
175	Pushing on	134
34	Pressing Direction Inside	27
114	Pressing Direction Outside	107

Most Direct Pressures

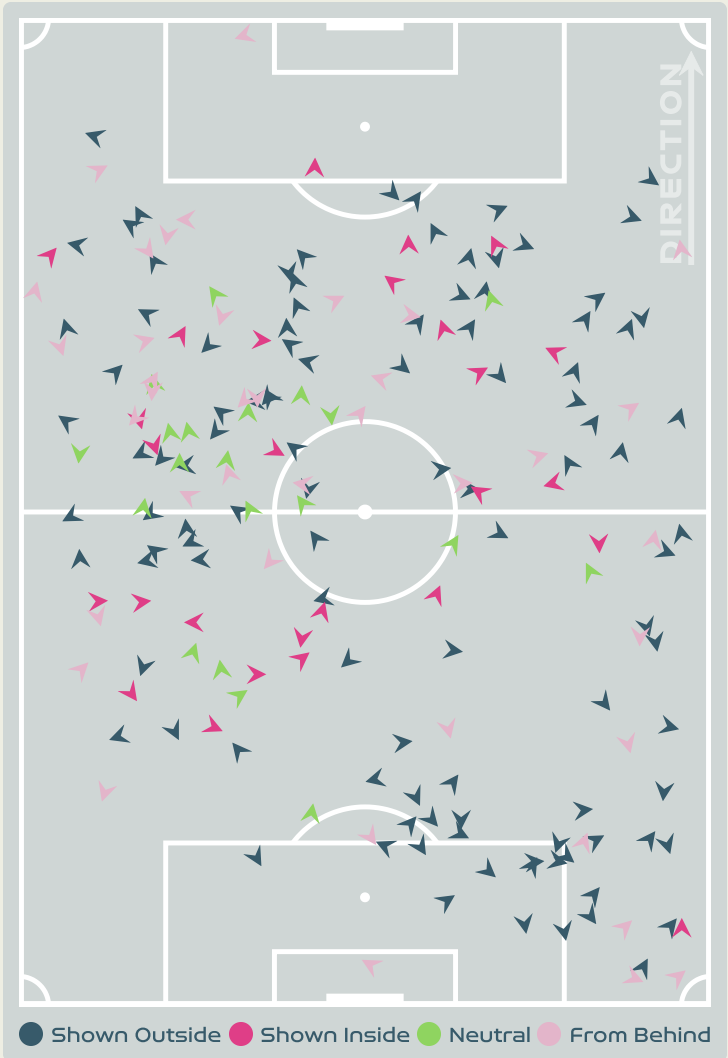
11

GORRY Katrina
RIGHT CENTRE MIDFIELD

Most Direct Pressures

9

KUHL Kathrine
LEFT CENTRE MIDFIELD





GOALKEEPING



Australia v Denmark

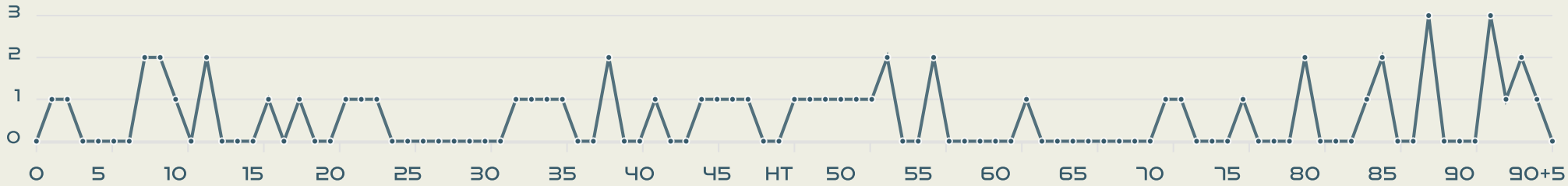


Goalkeeping Involvement



Australia

Australia GK Involvement Timeline



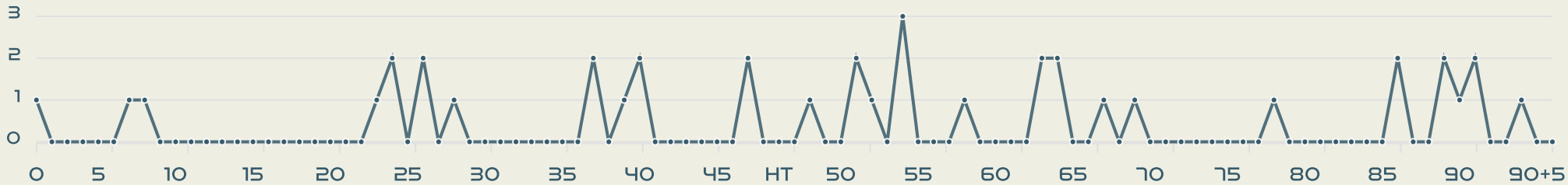
56

Total Involvements



Denmark

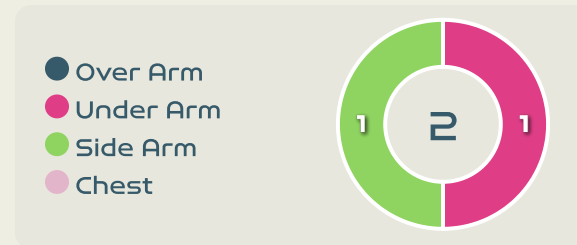
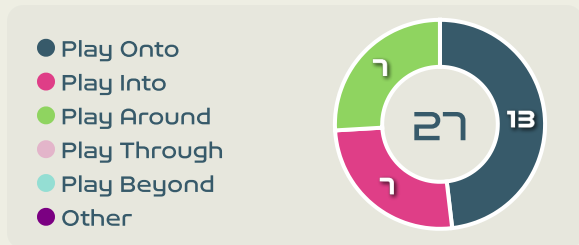
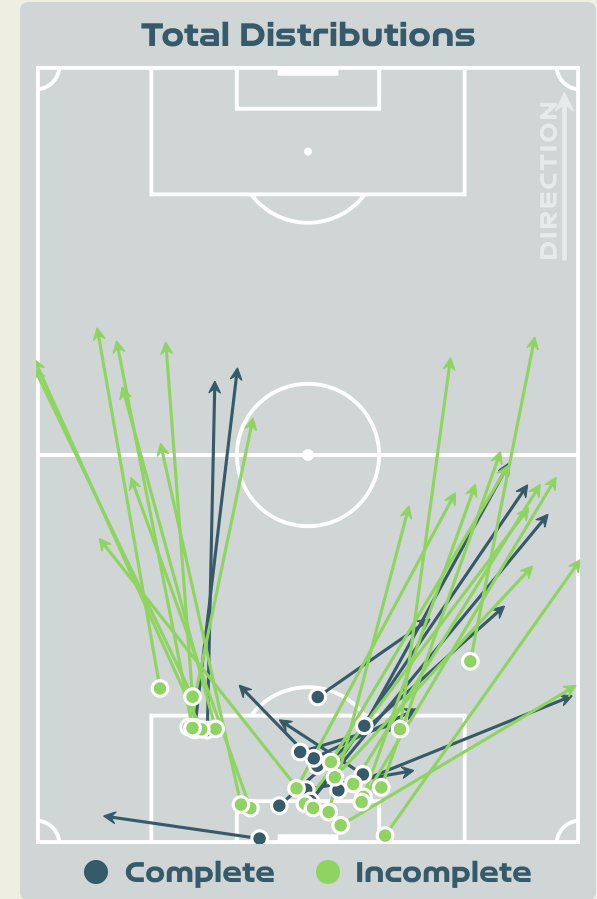
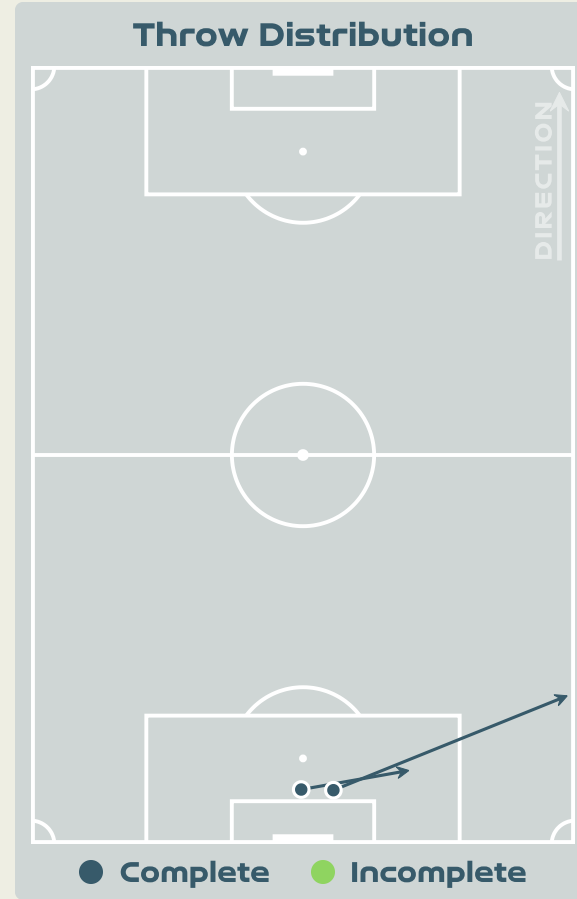
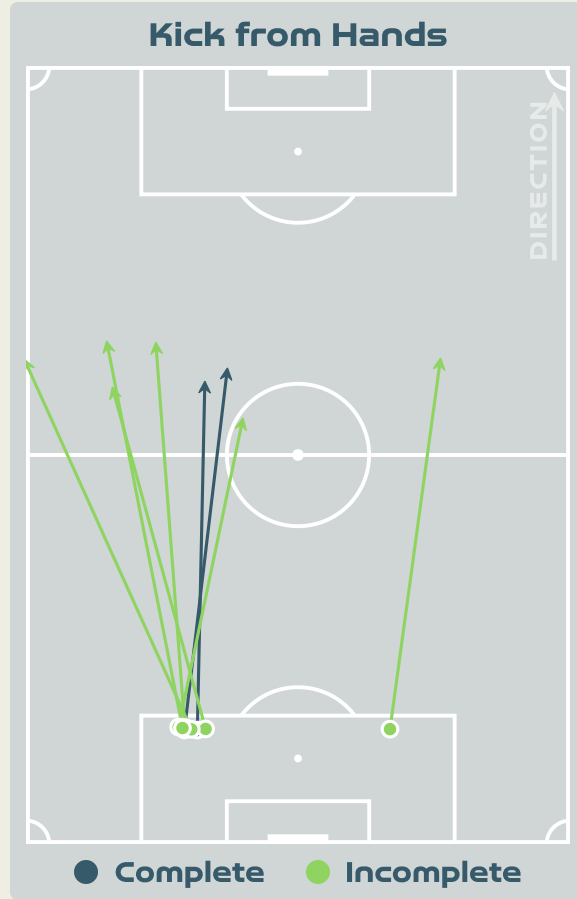
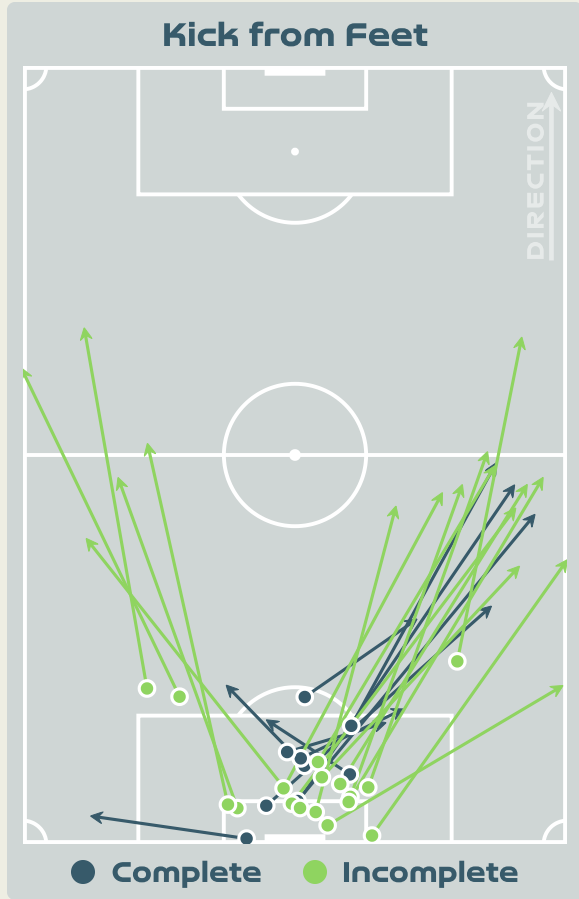
Denmark GK Involvement Timeline



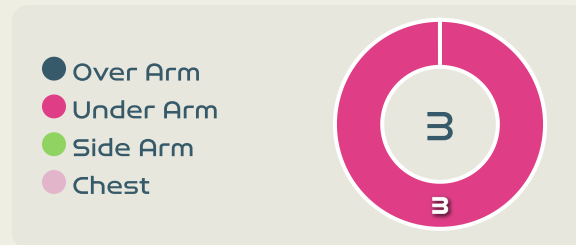
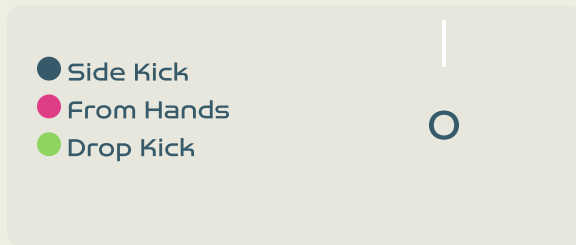
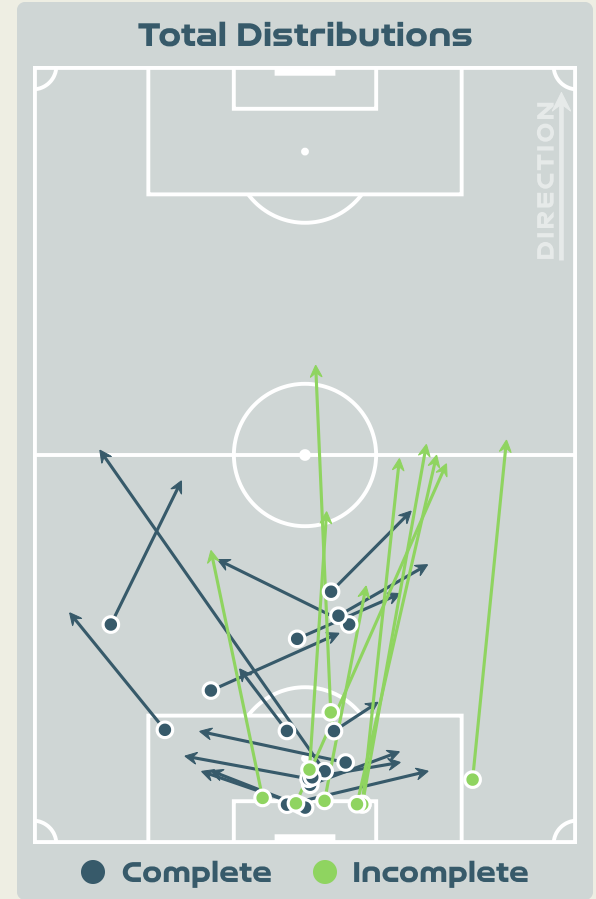
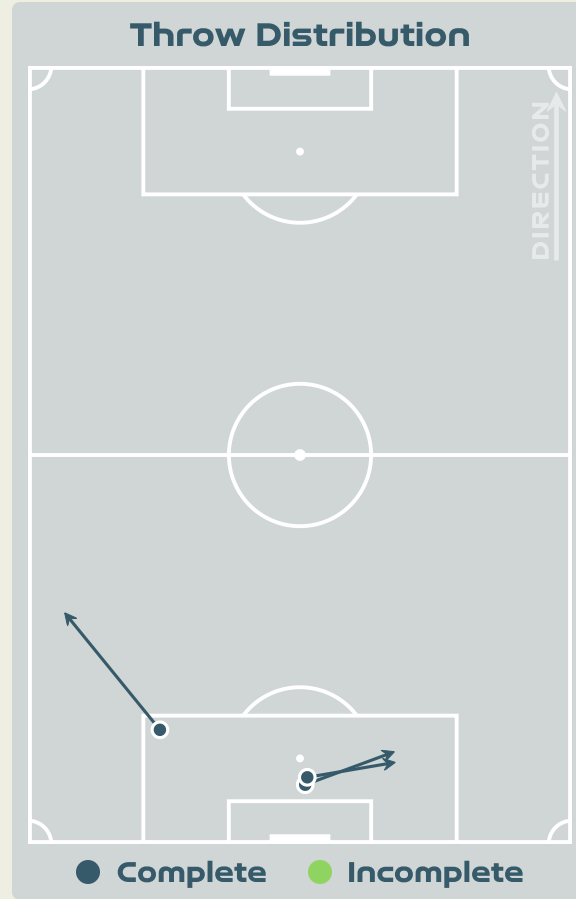
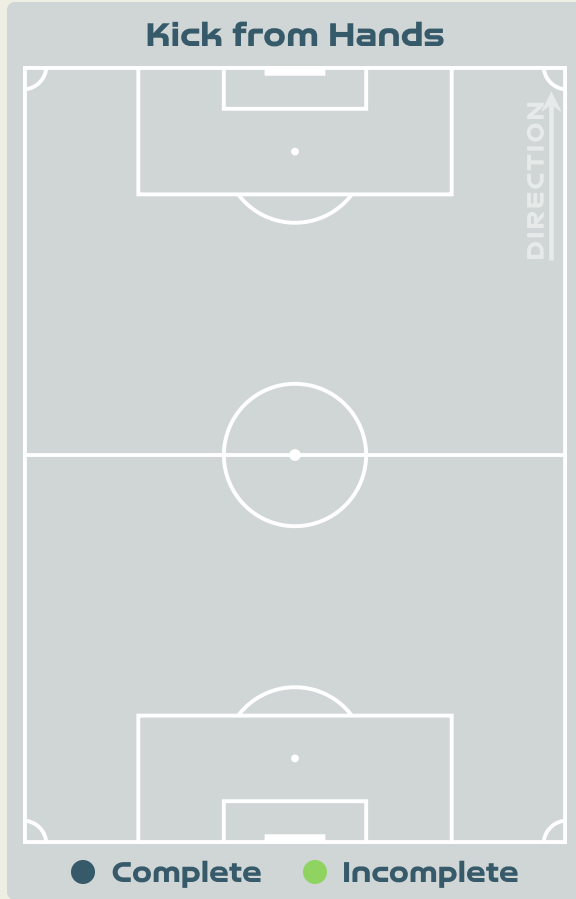
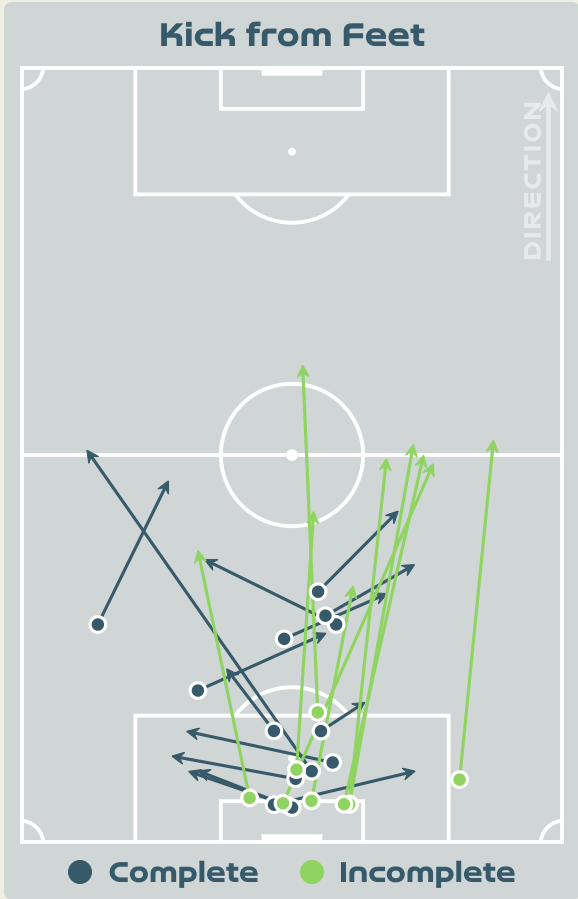
39

Total Involvements

Goalkeeping Distribution

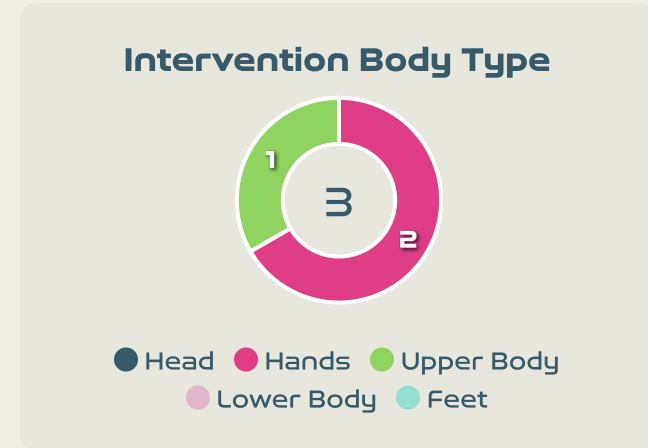
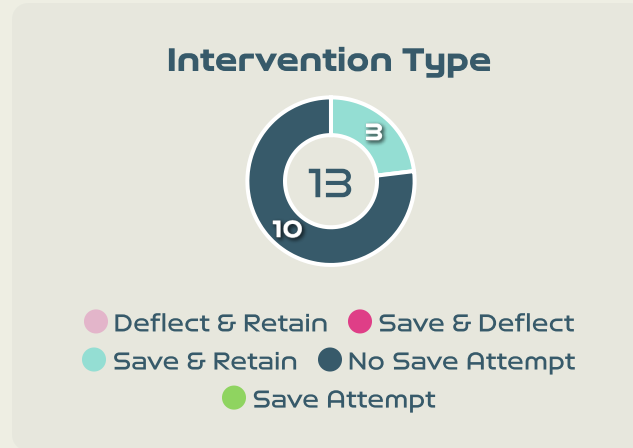
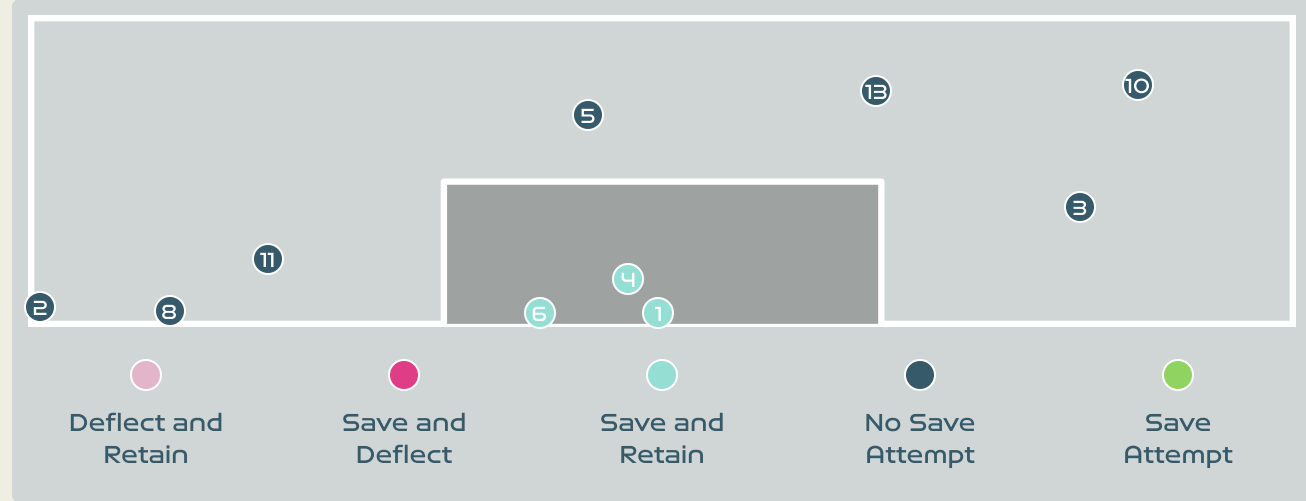
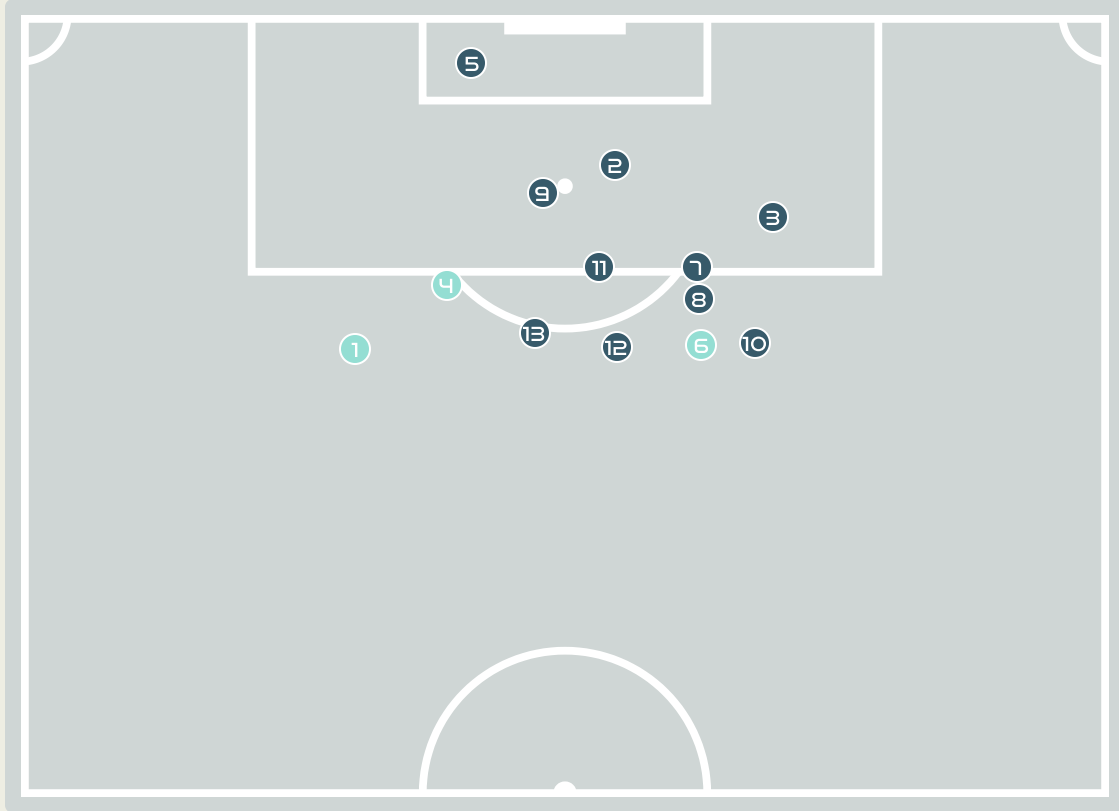


Goalkeeping Distribution





Goal Prevention

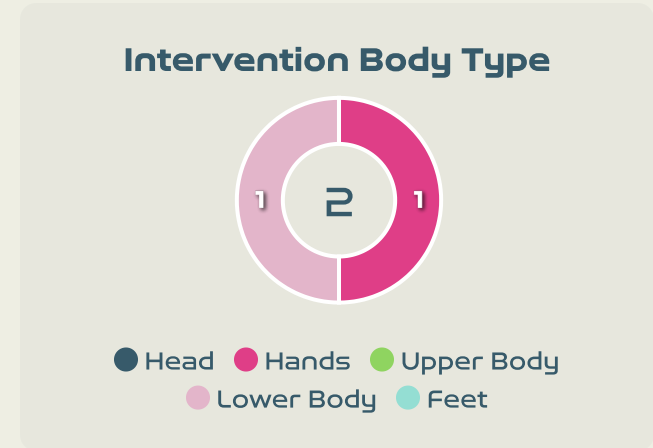
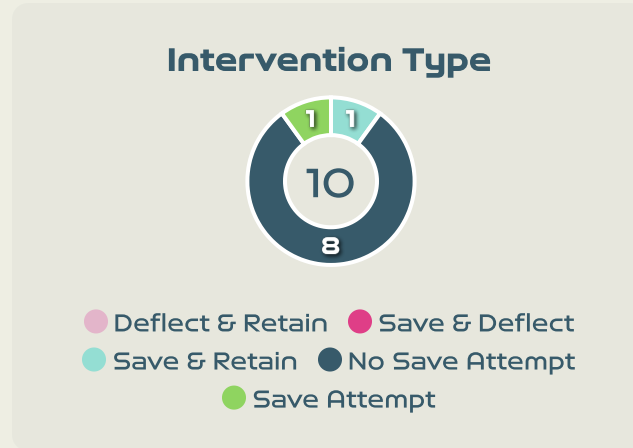
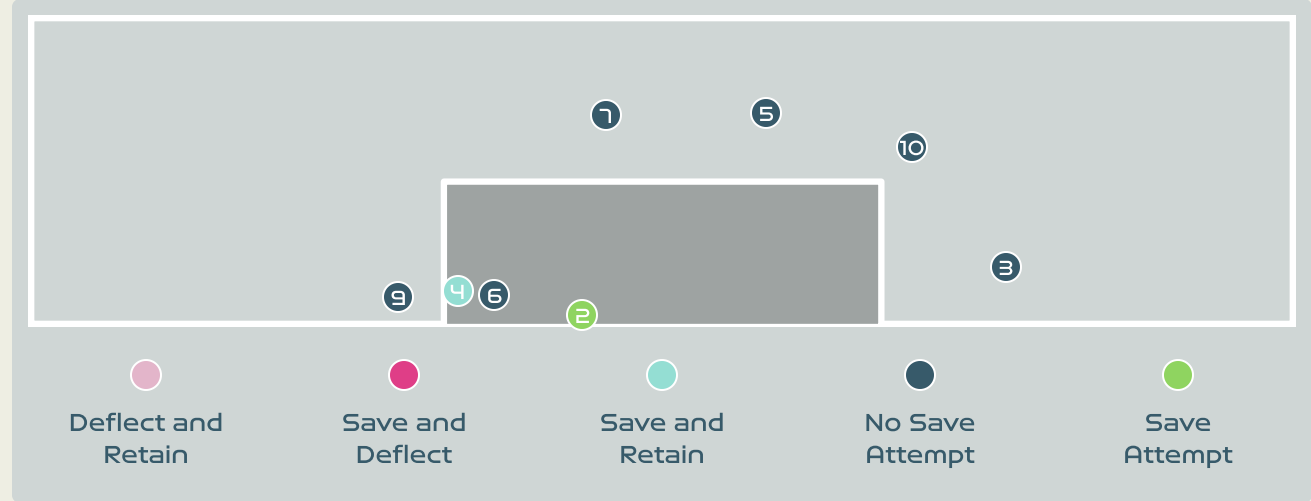
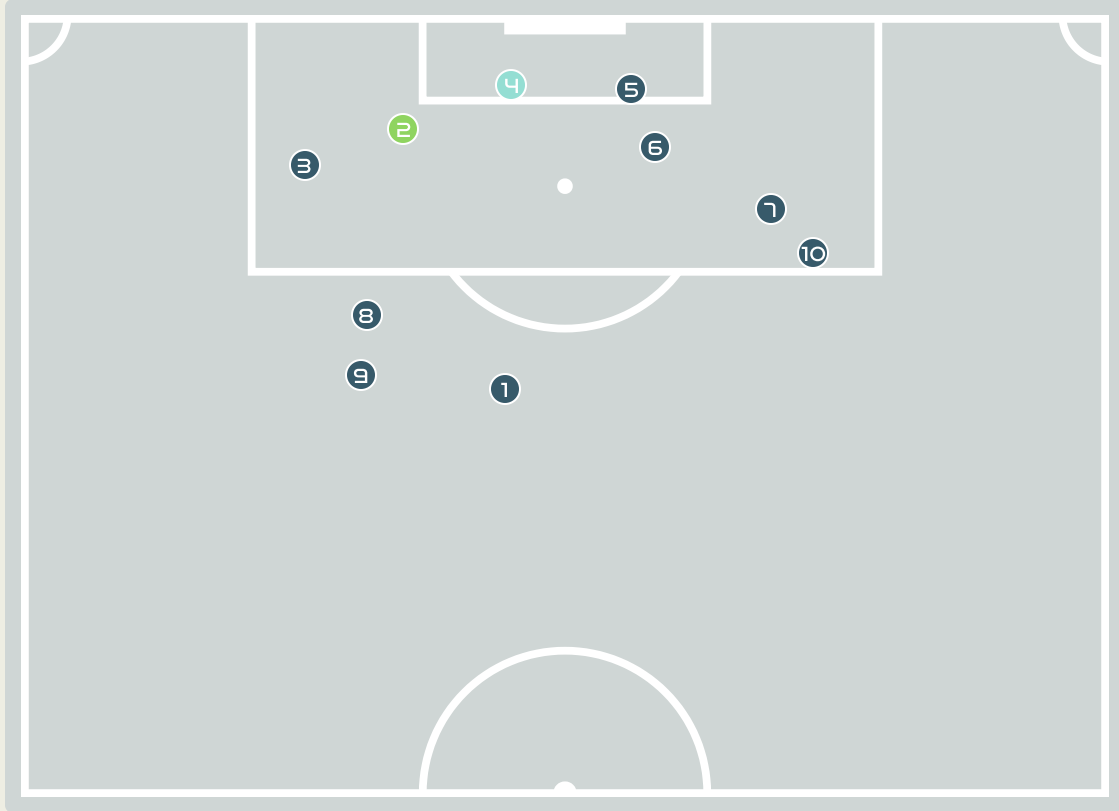


13
Total Attempts on Goal Faced

100
Save %

Total Attempts on Goal Faced	Total Goal Interventions	Save & Retain	Deflect & Retain	Save & Deflect	Save Attempt	No Save Attempt
13	3	3	0	0	0	10

Goal Prevention



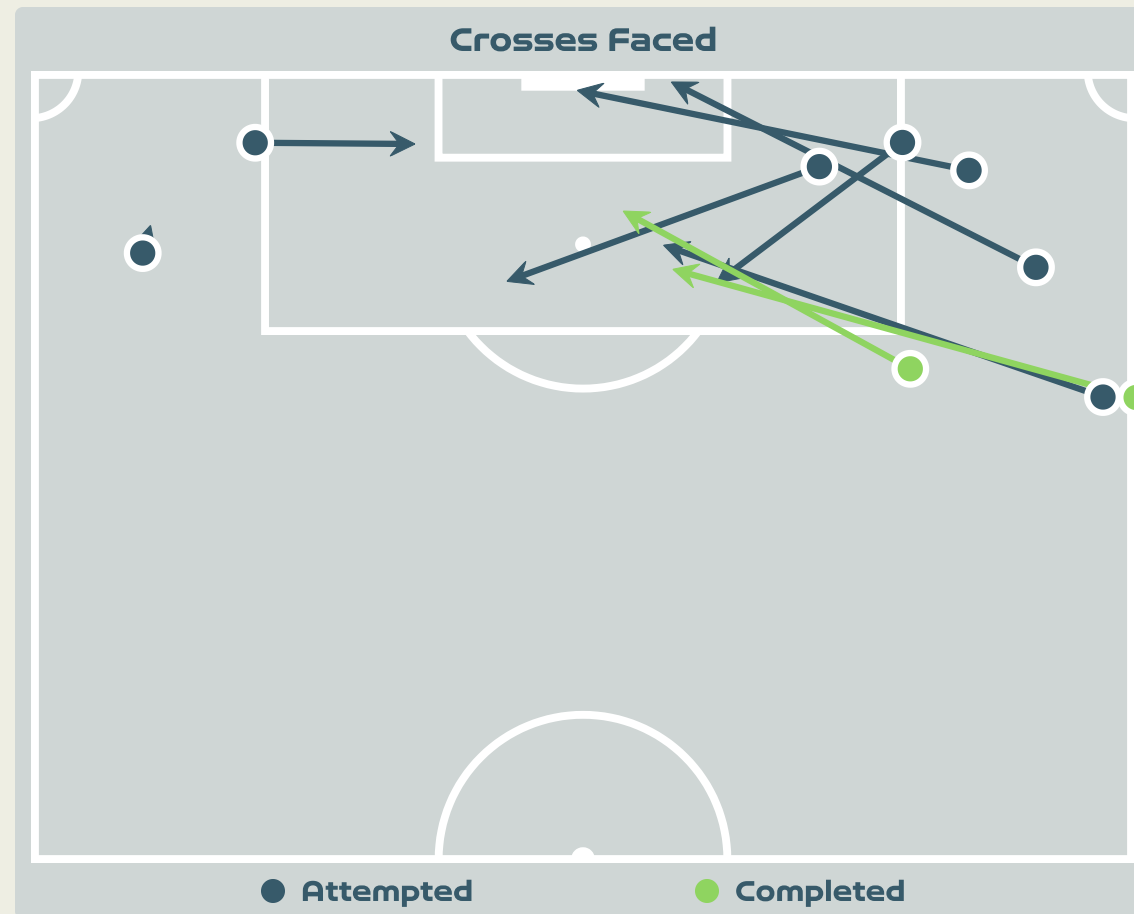
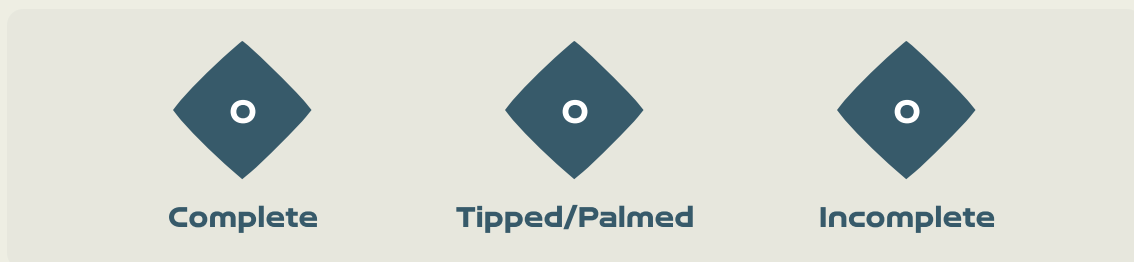
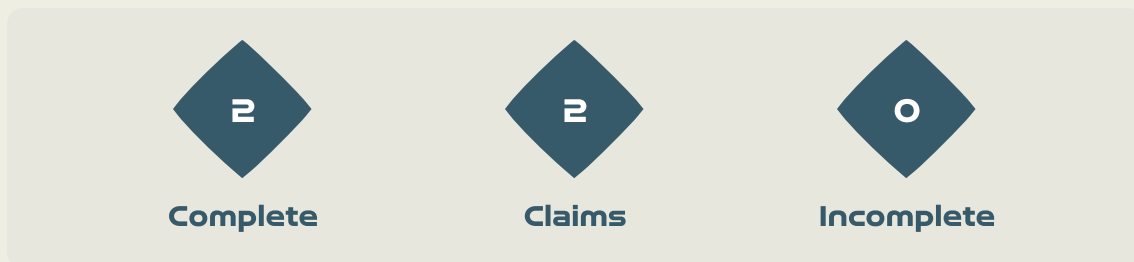
10
Total Attempts on Goal Faced

33
Save %

Total Attempts on Goal Faced	Total Goal Interventions	Save & Retain	Deflect & Retain	Save & Deflect	Save Attempt	No Save Attempt
10	1	1	0	0	1	8



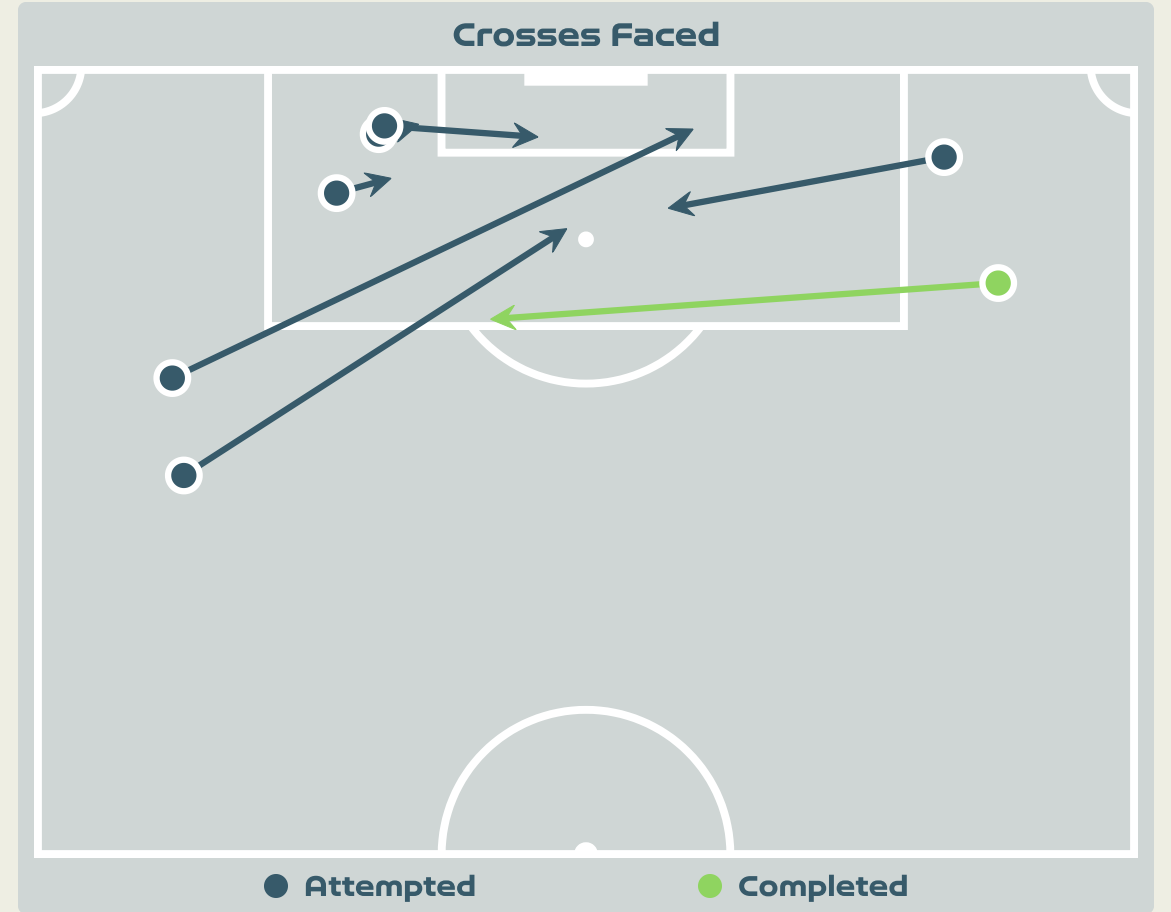
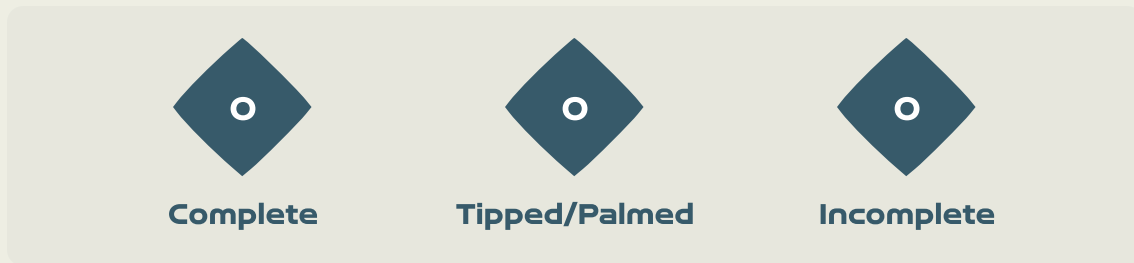
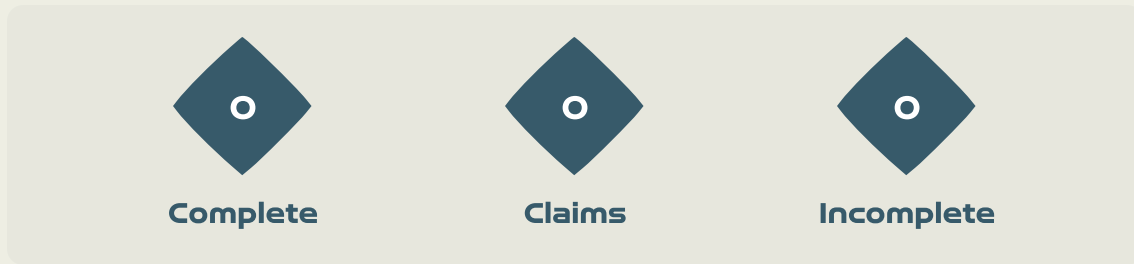
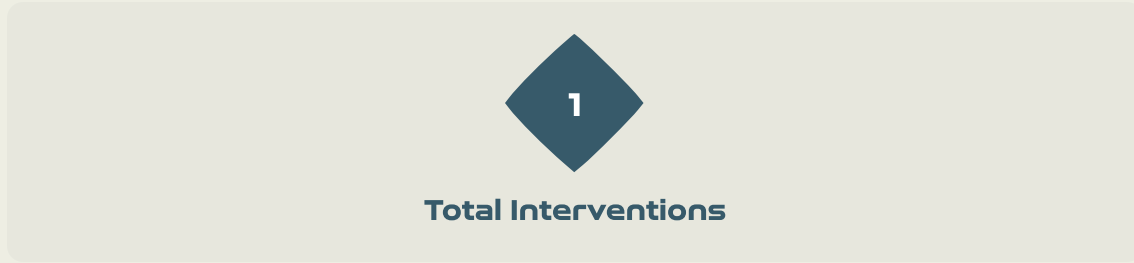
Aerial Control



Delivery Types Faced

Total	In Swing	Out Swing	Driven	Lofted	Cutback	Push
11	2	0	0	4	1	4

Aerial Control



Delivery Types Faced

Total	In Swing	Out Swing	Driven	Lofted	Cutback	Push
11	5	1	0	2	0	3



SET PLAYS



Australia v Denmark



Set Plays - Corners



41

Total Set Plays

10

Total Free Kicks

0

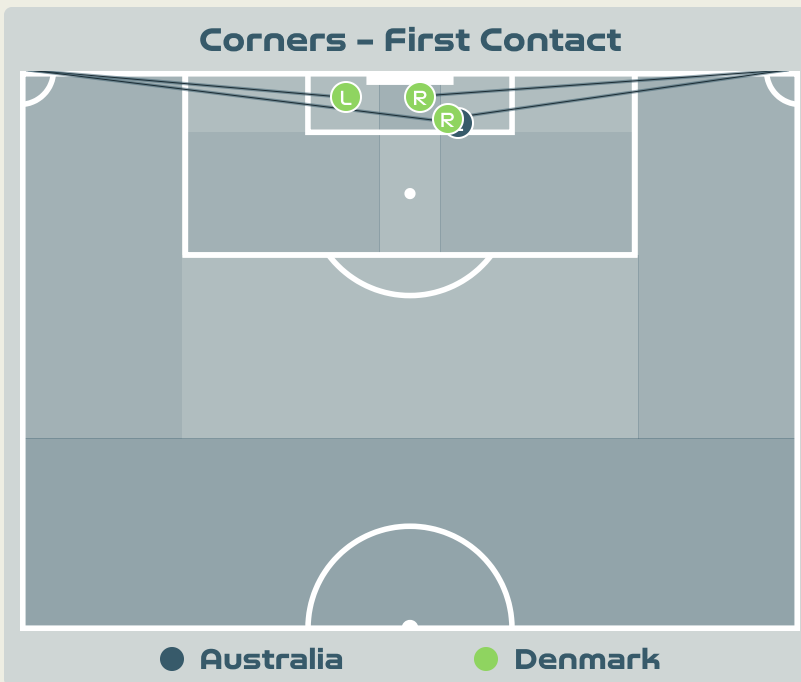
Total Penalties

4

Total Corners

27

Total Throw Ins



Delivery Type	From Left Side	From Right Side	Total
Direct to Area	2	2	4
Short	0	0	0
Edge of Penalty Area	0	0	0

Delivery Style	Total
Inswing	4
Outswing	0
Driven	0

Free Kicks	
Type	Total
Direct	9
Direct (on target)	0
Direct (off target)	0
Indirect	1

First Contacts on Australia Crosses

1

By Australia

3

By Denmark

Top 5 Player First Contacts		
Player	Team	Total
KENNEDY Alanna	Australia	1
BALLISAGER Stine	Denmark	1
BOYE Simone	Denmark	1
VANGSGAARD Amalie	Denmark	1

Set Plays - Corners

48

Total Set Plays

8

Total Free Kicks

0

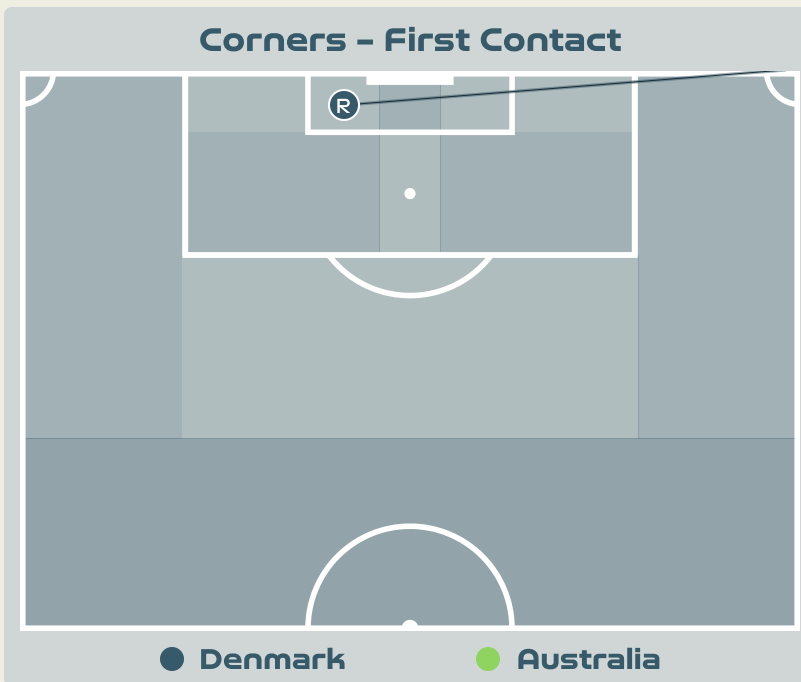
Total Penalties

2

Total Corners

38

Total Throw Ins



Delivery Type	From Left Side	From Right Side	Total
Direct to Area	1	1	2
Short	0	0	0
Edge of Penalty Area	0	0	0

Delivery Style	Total
Inswing	2
Outswing	0
Driven	0

Free Kicks	
Type	Total
Direct	7
Direct (on target)	0
Direct (off target)	0
Indirect	1

First Contacts on Denmark Crosses

1

By Denmark

0

By Australia

Top 5 Player First Contacts		
Player	Team	Total
BOYE Simone	Denmark	1



INDIVIDUAL DATA IN POSSESSION



Australia v Denmark



In Possession - Distributions



#	Player	Passes Attempted	Passes Completed	Pass Completion %	Switches of Play	Crosses Attempted	Crosses Completed	Line Breaks Attempted	Line Breaks Completed	Line Break Completion %	Ball Progressions	Take Ons	Step Ins	Attempts at Goal	Goals
18	ARNOLD Mackenzie	37	14	38%	0	0	0	24	5	20%	0	0	0	0	0
7	CATLEY Steph	38	30	79%	0	4	0	12	7	58%	0	0	0	0	0
9	FOORD Caitlin	18	13	72%	0	2	1	3	2	66%	6	4	2	3	1
10	VAN EGMOND Emily	21	16	76%	1	0	0	7	5	71%	1	1	0	1	0
11	FOWLER Mary	18	15	83%	0	0	0	2	2	100%	2	1	1	0	0
14	KENNEDY Alanna	40	33	82%	0	0	0	6	4	66%	0	0	0	1	0
15	HUNT Clare	45	40	89%	0	0	0	9	6	66%	1	0	1	0	0
16	RASO Hayley	22	16	73%	0	0	0	2	0	0%	1	0	1	1	1
19	GORRY Katrina	51	37	73%	2	1	0	13	9	69%	2	0	2	2	0
21	CARPENTER Ellie	48	29	60%	0	2	1	25	14	56%	5	3	2	1	0
23	COONEY-CROSS Kyra	36	33	92%	1	2	1	10	10	100%	3	0	3	0	0
4	POLKINGHORNE Clare	0	0	0%	0	0	0	0	0	0%	0	0	0	0	0
5	VINE Cortnee	2	1	50%	0	0	0	1	0	0%	1	0	1	0	0
13	YALLOP Tameka	0	0	0%	0	0	0	0	0	0%	0	0	0	0	0
20	KERR Sam	3	2	67%	0	0	0	1	1	100%	0	0	0	1	0

In Possession - Offers & Receptions



			Offer movement types						
#	Player	Total Offers	In Front	In Between	Out to In	In to Out	In Behind	No Movement	Offers Received
18	ARNOLD Mackenzie	12	0	0	0	0	0	12	6
7	CATLEY Steph	25	7	0	0	2	6	10	4
9	FOORD Caitlin	46	2	4	4	0	23	13	16
10	VAN EGMOND Emily	21	1	9	2	4	4	1	9
11	FOWLER Mary	31	8	17	2	2	1	1	7
14	KENNEDY Alanna	7	1	1	0	0	0	5	4
15	HUNT Clare	12	1	0	0	0	0	11	9
16	RASO Hayley	16	0	1	0	0	13	2	4
19	GORRY Katrina	45	23	16	0	0	0	6	18
21	CARPENTER Ellie	29	10	1	1	2	2	13	5
23	COONEY-CROSS Kyra	41	19	7	1	6	2	6	15
4	POLKINGHORNE Clare	0	0	0	0	0	0	0	0
5	VINE Cortnee	1	0	0	0	0	0	1	1
13	YALLOP Tameka	0	0	0	0	0	0	0	0
20	KERR Sam	8	0	3	1	0	4	0	2

In Possession - Distributions



#	Player	Passes Attempted	Passes Completed	Pass Completion %	Switches of Play	Crosses Attempted	Crosses Completed	Line Breaks Attempted	Line Breaks Completed	Line Break Completion %	Ball Progressions	Take Ons	Step Ins	Attempts at Goal	Goals
1	CHRISTENSEN Lene	26	17	65%	0	0	0	9	1	11%	0	0	0	0	0
3	BALLISAGER Stine	75	65	87%	1	0	0	20	10	50%	0	0	0	0	0
4	SEVECKE Rikke	33	24	73%	0	0	0	14	7	50%	0	0	0	0	0
5	BOYE Simone	83	73	88%	0	0	0	18	8	44%	1	0	1	1	0
6	HOLMGAARD Karen	28	25	89%	0	0	0	5	3	60%	0	0	0	0	0
9	VANGSGAARD Amalie	14	8	57%	0	0	0	4	2	50%	1	1	0	0	0
10	HARDER Pernille	28	23	82%	0	0	0	7	5	71%	6	4	2	5	0
11	VEJE Katrine	87	69	79%	1	3	1	32	21	65%	1	0	1	1	0
12	KUHL Kathrine	34	24	71%	0	0	0	5	1	20%	4	1	3	2	0
17	MADSEN Rikke Marie	26	19	73%	0	1	0	6	2	33%	0	0	0	1	0
19	THOMSEN Janni	22	14	64%	0	6	2	10	7	70%	1	1	0	1	0
2	HASBO Josefine	9	8	89%	0	0	0	3	2	66%	0	0	0	0	0
7	TROELSGAARD Sanne	7	4	57%	0	1	0	2	1	50%	1	1	0	0	0
8	SNERLE Emma	3	3	100%	0	0	0	3	3	100%	1	0	1	1	0
20	BRUUN Signe	9	6	67%	0	0	0	0	0	0%	0	0	0	1	0
21	GEJL Mille	11	7	64%	0	0	0	4	2	50%	0	0	0	0	0

In Possession - Offers & Receptions



			Offer movement types						
#	Player	Total Offers	In Front	In Between	Out to In	In to Out	In Behind	No Movement	Offers Received
1	CHRISTENSEN Lene	10	0	0	0	0	0	10	7
3	BALLISAGER Stine	38	0	0	0	0	0	38	24
4	SEVECKE Rikke	21	7	0	0	0	1	13	6
5	BOYE Simone	13	1	0	0	0	0	12	12
6	HOLMGAARD Karen	13	9	2	0	1	0	1	2
9	VANGSGAARD Amalie	28	0	1	0	1	22	4	6
10	HARDER Pernille	67	4	21	0	7	24	11	15
11	VEJE Katrine	25	8	2	0	0	1	14	13
12	KUHL Kathrine	75	41	26	1	2	2	3	23
17	MADSEN Rikke Marie	39	2	1	1	0	24	11	9
19	THOMSEN Janni	34	1	1	1	1	20	10	4
2	HASBO Josefine	19	10	4	0	0	3	2	5
7	TROELSGAARD Sanne	1	1	0	0	0	0	0	1
8	SNERLE Emma	2	0	2	0	0	0	0	1
20	BRUUN Signe	15	1	4	0	1	9	0	5
21	GEJL Mille	8	1	0	1	0	5	1	2



INDIVIDUAL DATA OUT OF POSSESSION



Australia v Denmark



Out of Possession



#	Player	Tackles Made / Won	Blocks	Interceptions	Pressing Direct	Pressing Indirect	Duels Won - Aerial	Duels Won - Physical	Possession Contests won	Clearances	Loose Ball Receptions	Pushing On	Pushing On into Pressing	Possession Regains	Possession Interrupted
18	ARNOLD Mackenzie	0 / 0	0	0	0	0	0	0	0	0	2	0	0	9	0
7	CATLEY Steph	0 / 0	3	0	2	3	1	0	1	12	4	16	3	2	10
9	FOORD Caitlin	5 / 1	2	0	4	18	0	0	1	0	5	23	9	1	1
10	VAN EGMOND Emily	0 / 0	1	1	2	24	1	0	3	3	2	20	13	1	4
11	FOWLER Mary	3 / 1	0	0	3	15	1	0	4	1	1	11	6	2	0
14	KENNEDY Alanna	0 / 0	2	2	1	2	8	0	8	10	2	5	1	10	4
15	HUNT Clare	1 / 0	2	3	3	2	5	0	5	9	3	10	2	9	8
16	RASO Hayley	2 / 0	4	0	9	45	1	0	3	3	7	25	16	3	4
19	GORRY Katrina	11 / 2	2	1	11	10	3	0	6	2	17	34	4	7	5
21	CARPENTER Ellie	3 / 1	4	2	3	5	2	0	2	12	11	8	3	11	9
23	COONEY-CROSS Kyra	1 / 0	0	1	5	16	1	0	1	2	9	18	4	1	2
4	POLKINGHORNE Clare	0 / 0	0	0	0	1	0	0	0	1	0	0	0	0	1
5	VINE Cortnee	1 / 1	0	0	1	8	1	0	2	0	0	4	3	1	0
13	YALLOP Tameka	0 / 0	0	0	0	0	0	0	0	1	0	0	0	0	1
20	KERR Sam	0 / 0	0	0	0	3	1	0	1	0	0	1	0	0	0

Out of Possession



#	Player	Tackles Made / Won	Blocks	Interceptions	Pressing Direct	Pressing Indirect	Duels Won - Aerial	Duels Won - Physical	Possession Contests won	Clearances	Loose Ball Receptions	Pushing On	Pushing On into Pressing	Possession Regains	Possession Interrupted
1	CHRISTENSEN Lene	0 / 0	0	0	0	0	0	0	0	0	5	0	0	3	0
3	BALLISAGER Stine	0 / 0	3	0	0	4	4	0	4	5	3	3	2	6	3
4	SEVECKE Rikke	3 / 1	4	0	3	5	1	0	1	3	3	10	4	3	5
5	BOYE Simone	4 / 2	3	0	6	8	6	0	6	9	6	7	3	7	6
6	HOLMGAARD Karen	3 / 1	1	1	6	1	3	0	3	3	4	8	2	5	3
9	VANGSGAARD Amalie	2 / 1	1	0	2	19	4	0	4	3	2	8	2	1	3
10	HARDER Pernille	1 / 1	3	0	5	24	2	0	3	0	7	14	7	2	1
11	VEJE Katrine	2 / 1	1	1	3	4	3	0	3	7	11	10	3	7	1
12	KUHL Kathrine	5 / 0	3	1	9	25	1	0	2	2	3	20	12	4	3
17	MADSEN Rikke Marie	3 / 2	7	0	1	12	1	0	2	2	4	15	4	5	5
19	THOMSEN Janni	7 / 1	4	1	6	15	0	0	0	5	4	13	8	5	5
2	HASBO Josefine	1 / 1	0	0	1	11	1	0	1	0	2	9	4	2	0
7	TROELSGAARD Sanne	0 / 0	1	0	0	0	0	0	0	0	5	2	0	1	0
8	SNERLE Emma	1 / 1	0	1	1	4	1	0	1	1	2	2	2	1	2
20	BRUUN Signe	0 / 0	2	0	1	11	2	0	2	0	1	8	8	1	1
21	GEJL Mille	1 / 0	1	0	2	4	0	0	1	1	5	5	2	1	1



INDIVIDUAL DATA PHYSICAL



Australia v Denmark



Physical Data



#	Player	Total Distance (m)	Zone 1: 0-7 km/h (m)	Zone 2: 7-13km/h (m)	Zone 3: 13-19km/h (m)	Zone 4: 19-23km/h (m)	Zone 5: 23+ km/h (m)	High Speed Runs (Zone 4)	Sprints (Zone 5)	Top Speed (km/h)
18	ARNOLD Mackenzie	4748.1	3311.8	1266.3	163.3	6.6	0	22.0	1.0	20.1
7	CATLEY Steph	10667.9	3427.6	4042.1	2250.9	701.9	245.4	193.0	48.0	28.6
9	FOORD Caitlin	10878.9	3607.4	3922.9	2439.0	512.4	396.0	189.0	49.0	30.5
10	VAN EGMOND Emily	9332.3	2721.3	3458.5	2657.8	426.5	68.1	198.0	30.0	27.0
11	FOWLER Mary	11114.0	3410.9	4142.2	2581.8	683.5	294.5	203.0	51.0	30.4
14	KENNEDY Alanna	9621.6	3520.6	3631.2	1964.7	355.0	151.1	168.0	28.0	27.2
15	HUNT Clare	9761.5	3336.5	4233.5	1768.8	306.5	116.2	150.0	21.0	27.8
16	RASO Hayley	9423.8	2829.0	3388.8	2538.8	455.2	211.1	186.0	45.0	32.4
19	GORRY Katrina	11196.4	3114.8	4738.3	2818.1	414.3	110.8	215.0	31.0	28.8
21	CARPENTER Ellie	10445.0	3348.7	4179.0	2183.0	495.1	239.2	185.0	40.0	29.0
23	COONEY-CROSS Kyra	10850.5	3126.0	4578.9	2508.6	524.1	113.9	196.0	36.0	28.1
4	POLKINGHORNE Clare	538.4	218.0	183.1	123.0	14.4	0	10.0	1.0	22.1
5	VINE Cortnee	2119.2	589.1	623.0	610.3	174.0	122.7	42.0	17.0	30.9
13	YALLOP Tameka	107.7	25.0	34.8	22.9	25.1	0	2.0	1.0	22.7
20	KERR Sam	1747.6	728.2	518.1	415.7	60.5	25.0	29.0	6.0	26.1

Physical Data



#	Player	Total Distance (m)	Zone 1: 0-7 km/h (m)	Zone 2: 7-13km/h (m)	Zone 3: 13-19km/h (m)	Zone 4: 19-23km/h (m)	Zone 5: 23+ km/h (m)	High Speed Runs (Zone 4)	Sprints (Zone 5)	Top Speed (km/h)
1	CHRISTENSEN Lene	4579.7	3244.7	1017.6	303.6	13.3	0	35.0	2.0	21.5
3	BALLISAGER Stine	9714.5	3577.8	4005.3	1835.1	172.9	123.4	163.0	19.0	28.0
4	SEVECKE Rikke	6778.4	2487.0	2631.4	1376.0	197.9	86.8	100.0	14.0	27.9
5	BOYE Simone	9030.3	3506.5	3635.6	1551.4	204.1	132.7	137.0	23.0	27.9
6	HOLMGAARD Karen	9079.5	3150.6	3498.3	1919.4	400.4	110.8	153.0	28.0	27.6
9	VANGSGAARD Amalie	9358.7	3337.3	3311.1	1928.8	462.3	318.2	161.0	35.0	28.2
10	HARDER Pernille	10541.0	4005.6	3528.1	2369.6	404.8	231.9	205.0	39.0	27.6
11	VEJE Katrine	10605.2	3655.6	3868.8	2426.5	490.0	164.4	179.0	34.0	30.5
12	KUHL Kathrine	8534.3	2653.3	3537.5	1736.7	496.7	110.1	134.0	43.0	27.9
17	MADSEN Rikke Marie	8364.5	1935.5	3437.8	2256.7	493.5	240.1	178.0	45.0	28.8
19	THOMSEN Janni	11051.5	3656.9	3890.1	2462.3	727.2	313.9	212.0	55.0	32.5
2	HASBO Josefine	3004.2	639.3	1098.9	967.1	269.5	29.4	75.0	12.0	24.4
7	TROELSGAARD Sanne	1705.5	552.7	614.5	406.9	45.4	86.1	32.0	7.0	27.6
8	SNERLE Emma	1761.2	524.5	503.0	535.4	145.5	52.8	42.0	11.0	26.6
20	BRUUN Signe	3531.3	1052.0	1122.6	944.3	274.0	138.4	76.0	24.0	27.6
21	GEJL Mille	3831.2	1009.1	1395.0	1052.4	291.9	82.8	82.0	19.0	27.5

