



# Haiti 0 - 2 Denmark

Group D - Match 40

01 August 2023

19:00 Kick Off

Perth Oval

**POST MATCH SUMMARY REPORT**

# Match Summary - Teams



**Haiti**

**0** — **2**

**Denmark**

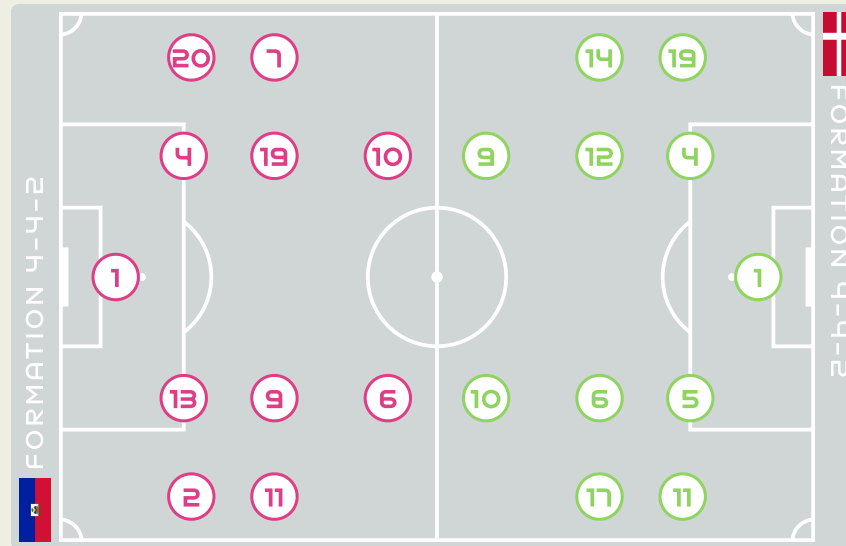


**STARTING**

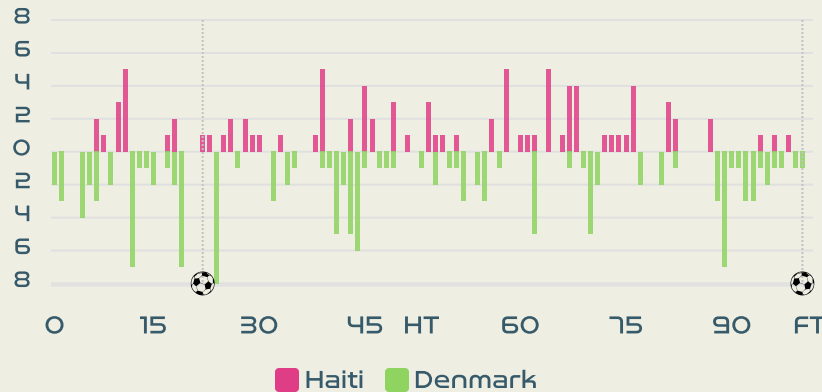
1	GK	THEUS Kerly	
2	DF	SURPRIS Chelsea	
4	DF	JOSEPH Tabita	
6	MF	DUMORNAY Melchie	
7	FW	LOUIS Batcheba	
9	MF	JEUDY Sherly	
10	FW	MONDESIR Nerilia (C)	
11	FW	ELOISSAINT Roseline	
13	DF	PETIT-FRERE Betina	↓ 87'
19	MF	PIERRE-LOUIS Dayana	↓ 67'
20	DF	LOUIS Kethna	

**SUBSTITUTES**

12	GK	AMBROISE Nahomie	
23	GK	LARCO Lara	
3	DF	LIMAGE Jennyfer	
5	DF	MORYL Maudeline	
8	MF	ETIENNE Danielle	
14	DF	JOSEPH Esthericove	
15	FW	JOSEPH Darlina	
16	DF	PIERRE-JEROME Milan	
17	FW	JOSEPH Shwendesky	
18	MF	GANTHIER Noa	
21	DF	MATHURIN Ruthny	↑ 87'
22	FW	BORGELLA Roselord	↑ 67'



**Distribution in the Final Third**



**STARTING**

CHRISTENSEN Lene	GK	1	
SEVECKE Rikke	DF	4	
BOYE Simone	DF	5	
HOLMGAARD Karen	MF	6	↓ 80'
VANGSGAARD Amalie	FW	9	
(C) HARDER Pernille	FW	10	↓ 90+2', ⚽ 22'
VEJE Katrine	DF	11	
KUHL Kathrine	MF	12	↓ 80'
SORENSEN Nicoline	MF	14	↓ 63'
MADSEN Rikke Marie	FW	17	↓ 62'
THOMSEN Janni	DF	19	

**SUBSTITUTES**

LARSEN Kathrine	GK	16	
BAY Maja	GK	22	
HASBO Josefine	MF	2	↑ 80'
BALLISAGER Stine	DF	3	
TROELSGAARD Sanne	MF	7	⚽ 90+10', ↑ 80'
SNERLE Emma	MF	8	
THRIGE Sara	DF	13	
THOGERSEN Frederikke	MF	15	
GEVITZ Luna	DF	18	↑ 90+2'
BRUUN Signe	FW	20	↑ 63'
GEJL Mille	FW	21	↑ 62'
SVAVA Sofie	DF	23	

# Match Summary - Key Statistics



Haiti



Denmark



## Possession

Total	35.6%	16.3%	48.1%	Total
0	Goals			2
11 (3)	Attempts at Goal (On Target)			9 (6)
282 (172)	Total Passes (Complete)			451 (354)
61 %	Pass Completion %			78 %
55	Completed Line Breaks			111
6	Defensive Line Breaks			16
60	Receptions in the Final Third			104
27	Crosses			24
13	Ball Progressions			17
229 (55)	Defensive Pressures Applied (Direct Pressures)			171 (53)
82	Forced Turnovers			100
118	Second Balls			104
106.8 km	Total Distance Covered			121 km
5 km	Zone 4 - Low Speed Sprinting: 19-23km/h			6.1 km



Haiti

## Phases of Play



Denmark

### IN POSSESSION



### OUT OF POSSESSION





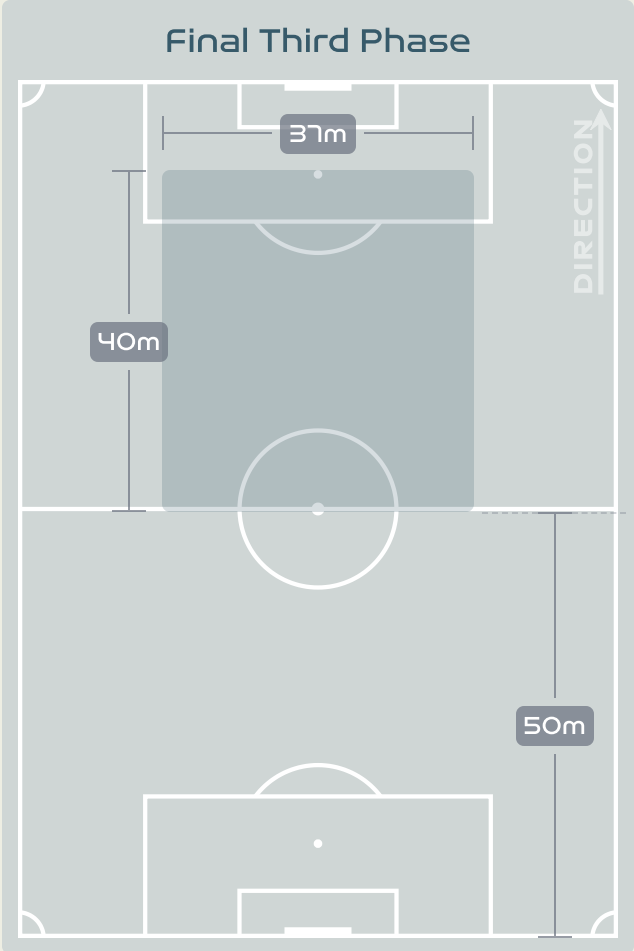
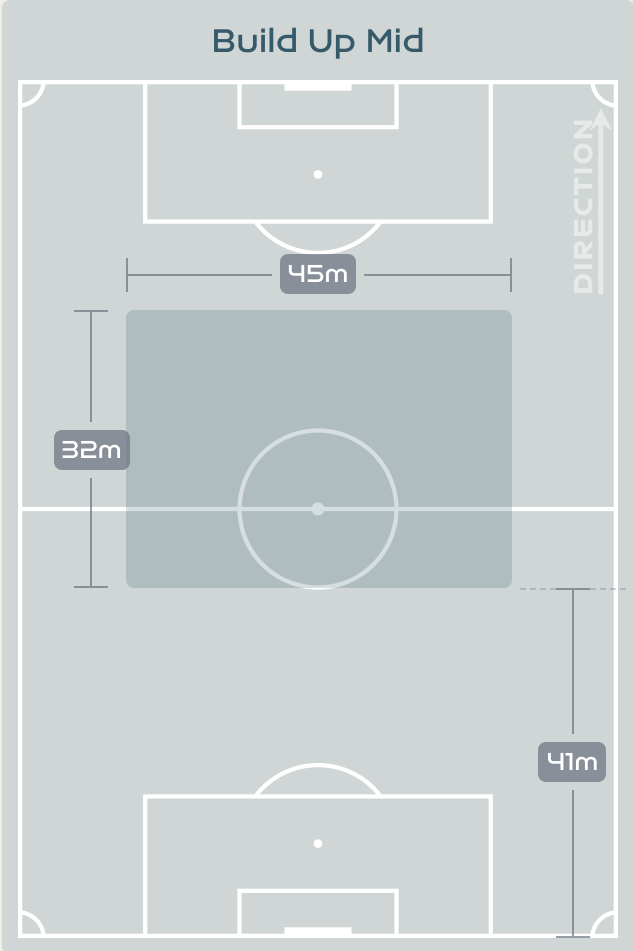
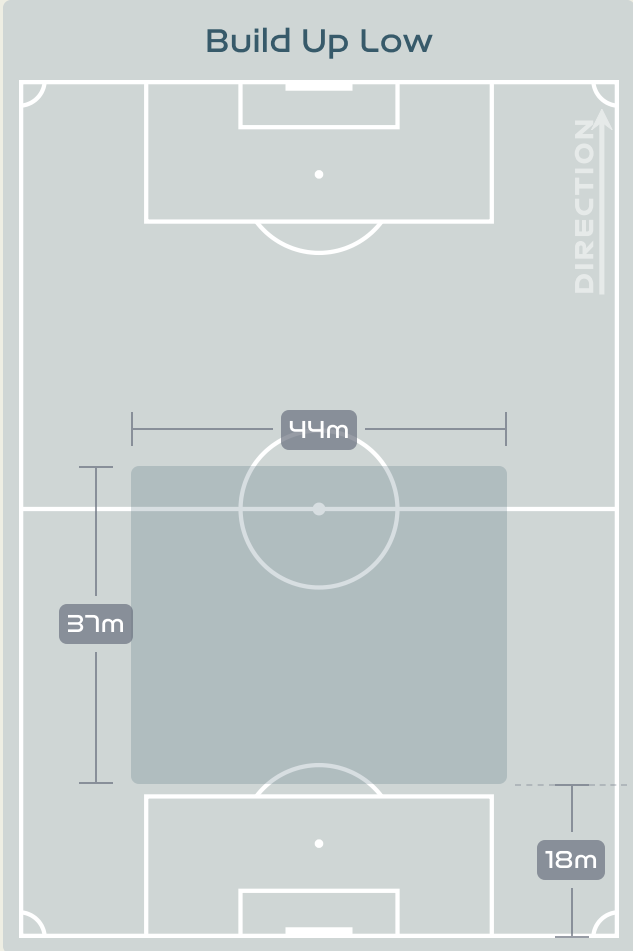
# IN POSSESSION



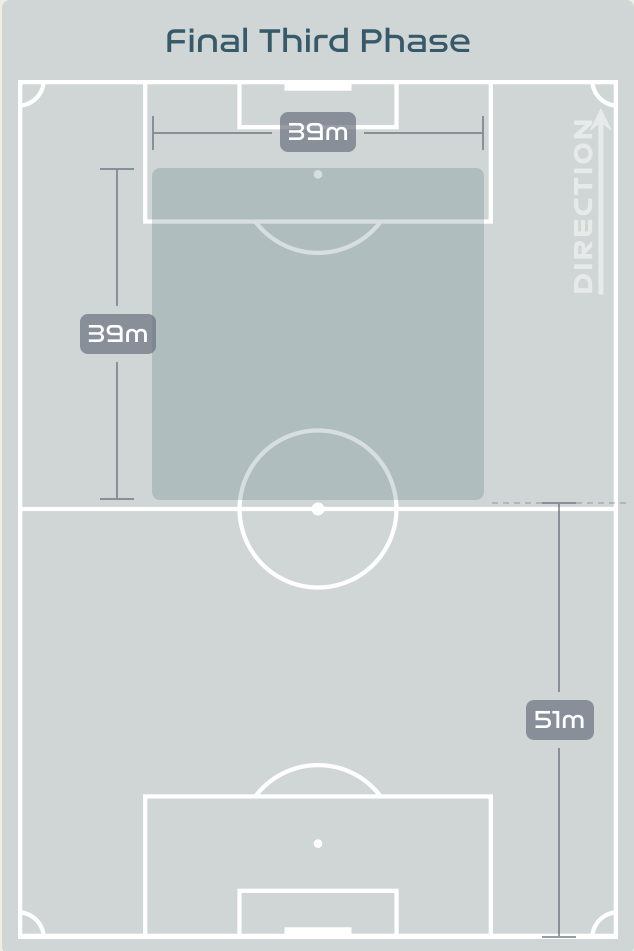
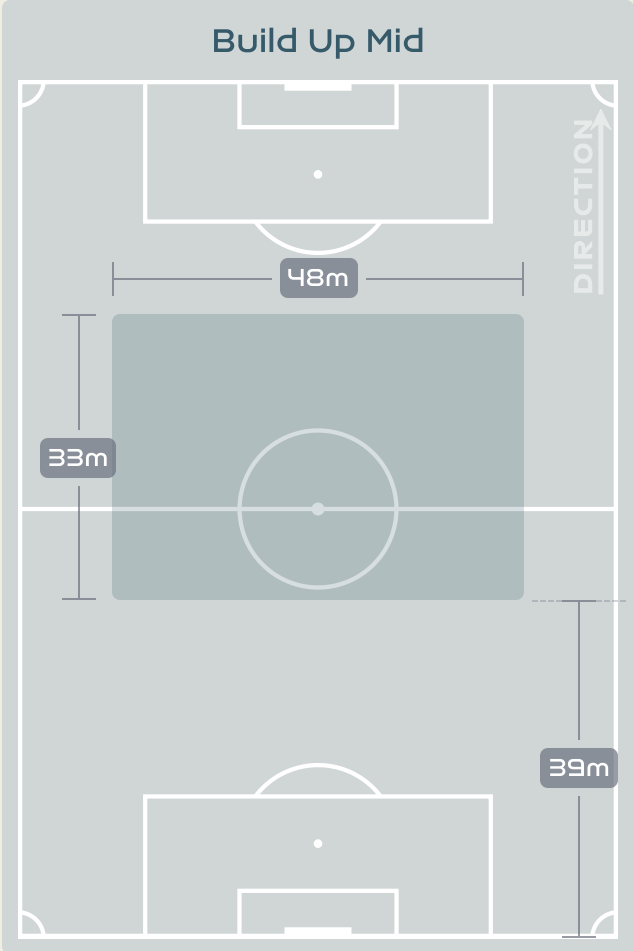
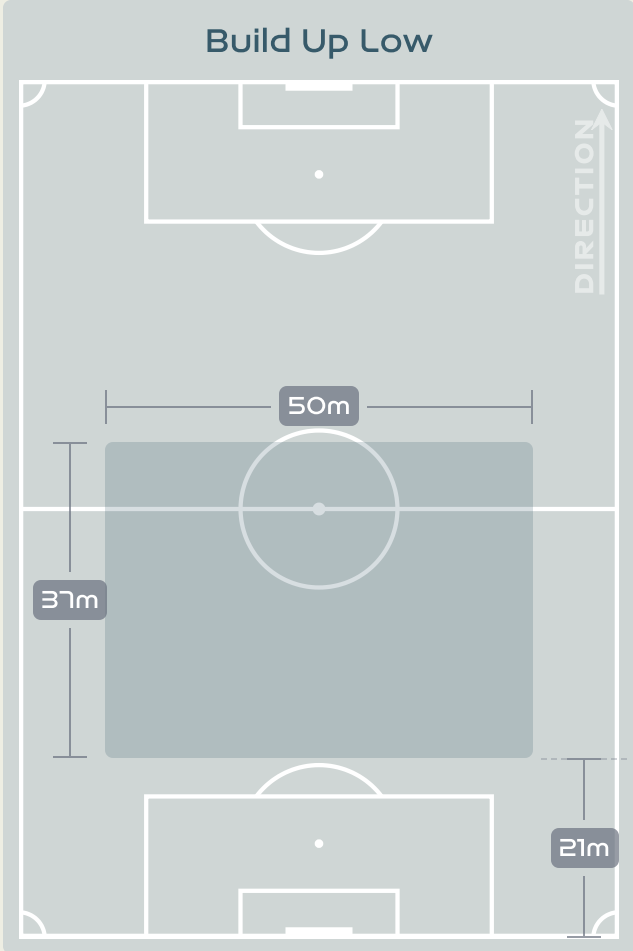
Haiti v Denmark



# In Possession Line Height & Team Length



# In Possession Line Height & Team Length



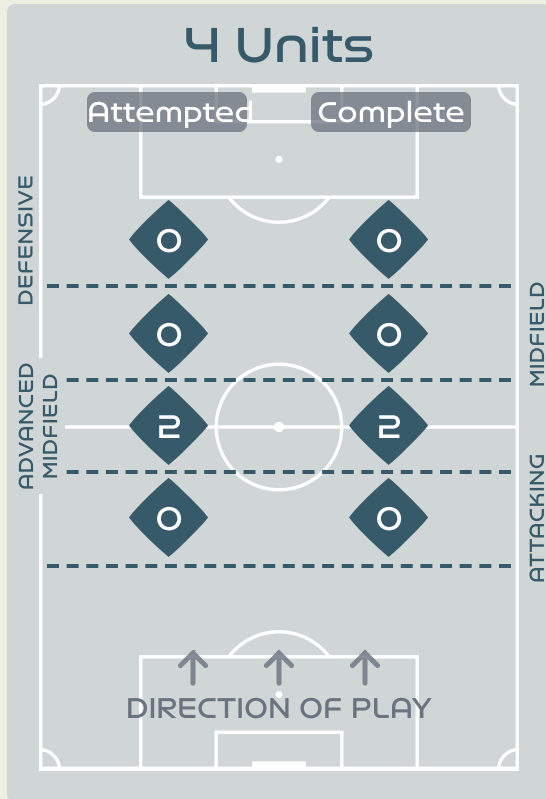
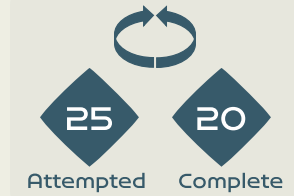
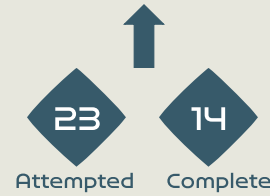
# Line Breaks



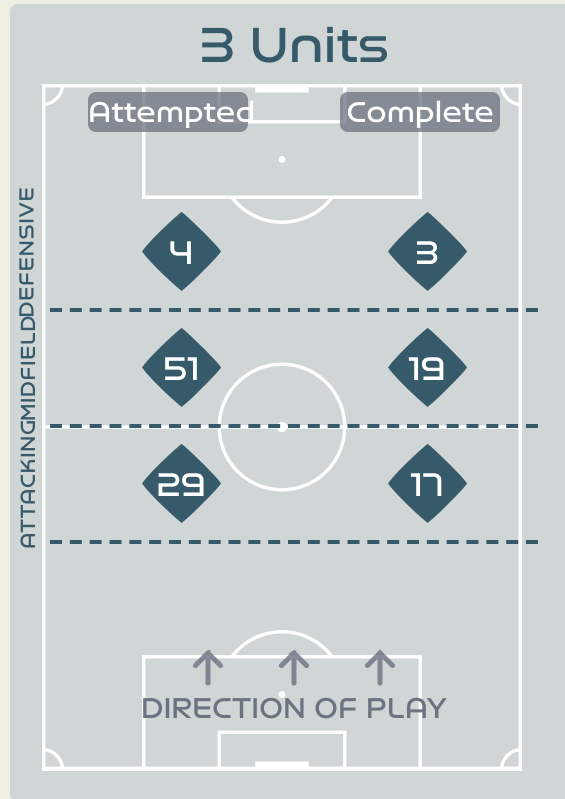
Haiti

Attempted Line Breaks

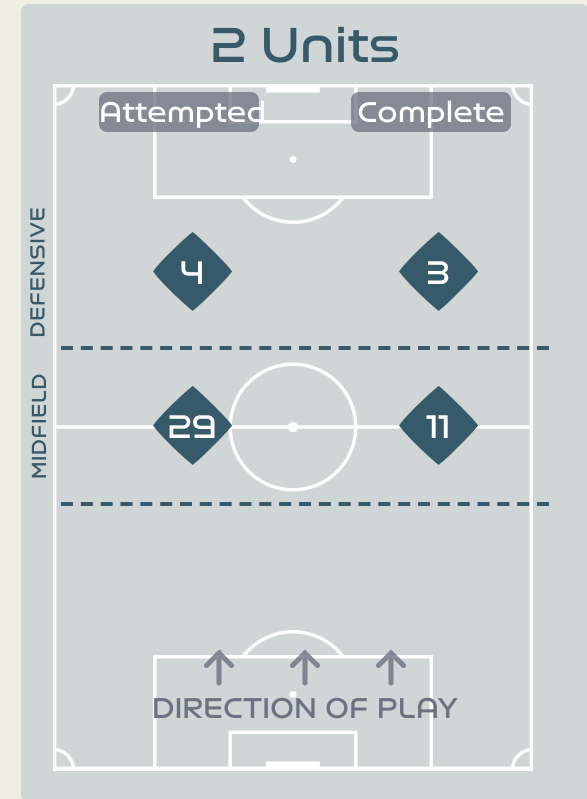
119



Attempted Line Breaks 2  
 Inside Shape 2  
 Outside Shape 0



Attempted Line Breaks 84  
 Inside Shape 61  
 Outside Shape 23



Attempted Line Breaks 33  
 Inside Shape 25  
 Outside Shape 8



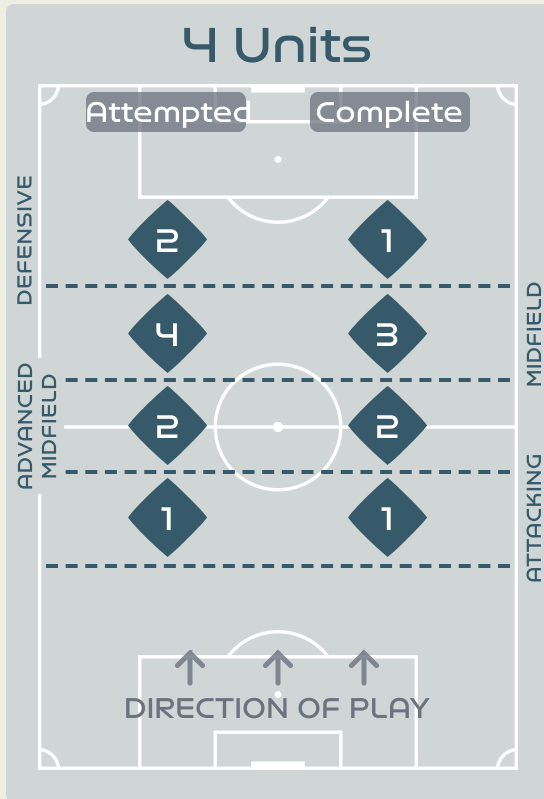
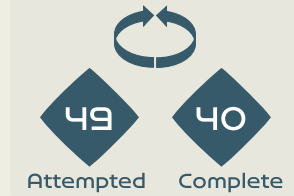
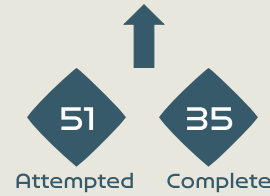
# Line Breaks



Denmark

Attempted Line Breaks

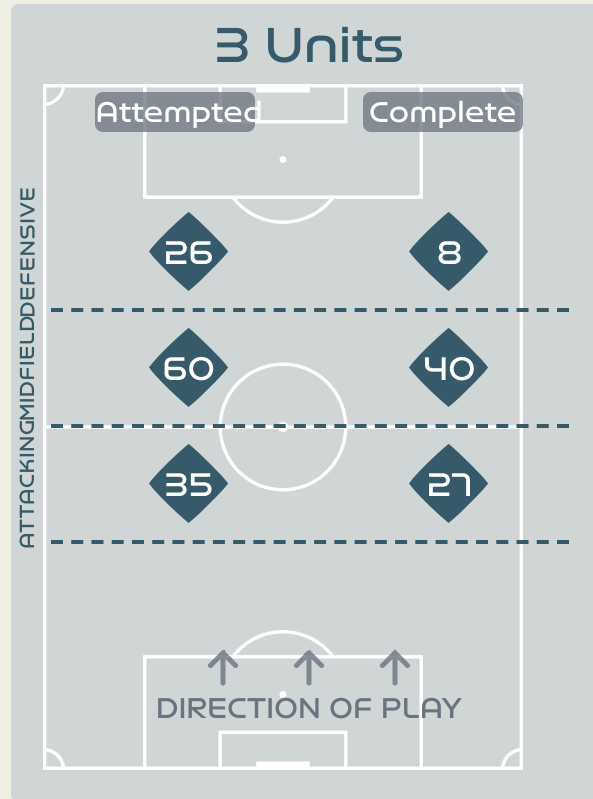
170



Attempted Line Breaks 9

Inside Shape 4

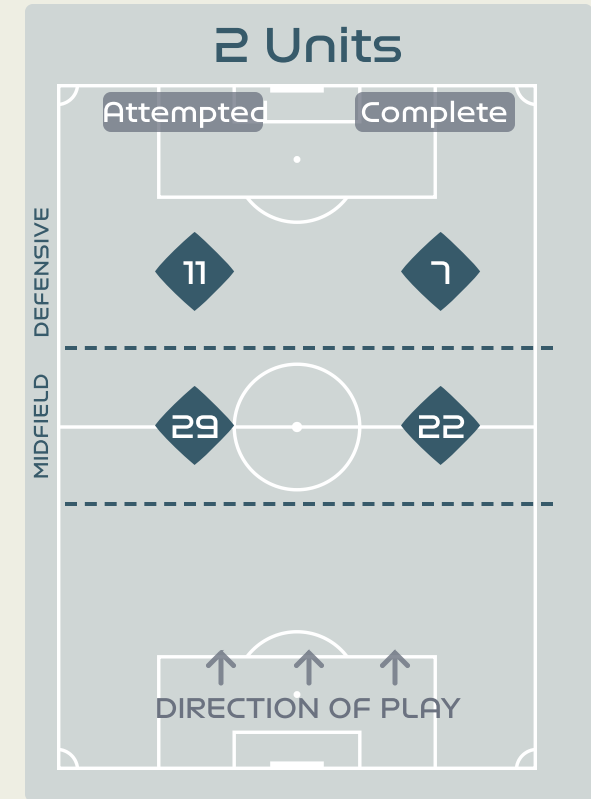
Outside Shape 5



Attempted Line Breaks 121

Inside Shape 84

Outside Shape 37



Attempted Line Breaks 40

Inside Shape 24

Outside Shape 16



## Line Breaks



					4 Units				3 Units			2 Units		Direction			Distribution Type		
#	Player	Line Breaks Attempted	Line Breaks Completed	Line Break Completion %	Attacking Line	Attacking Midfield Line	Midfield Line	Defensive Line	Attacking Line	Midfield Line	Defensive Line	Midfield Line	Defensive Line	Through	Around	Over	Pass	Cross	Ball Progression
1	CHRISTENSEN Lene	12	5	41%	0	0	0	0	3	8	1	0	0	0	0	12	12	0	0
4	SEVECKE Rikke	17	12	70%	0	0	0	0	7	6	1	2	1	3	6	8	17	0	0
5	BOYE Simone	17	11	64%	0	1	0	0	8	5	1	2	0	3	4	10	17	0	0
6	HOLMGAARD Karen	13	10	76%	0	0	0	0	2	5	1	4	1	7	3	3	13	0	0
9	VANGSGAARD Amalie	6	3	50%	0	0	1	0	0	2	2	1	0	2	2	2	4	1	1
10	HARDER Pernille	18	10	55%	0	0	1	0	0	6	7	1	3	9	6	3	18	0	0
11	VEJE Katrine	27	20	74%	1	1	0	0	9	8	1	7	0	5	8	14	27	0	0
12	KUHL Kathrine	15	13	86%	0	0	0	0	1	7	2	4	1	11	1	3	14	0	1
14	SORENSEN Nicoline	8	4	50%	0	0	0	0	0	2	5	1	0	2	5	1	5	1	2
17	MADSEN Rikke Marie	3	1	33%	0	0	0	0	1	1	0	0	1	2	1	0	3	0	0
19	THOMSEN Janni	21	13	61%	0	0	0	1	4	8	1	4	3	2	10	9	19	1	1
2	HASBO Josefine	2	2	100%	0	0	1	0	0	0	0	1	0	2	0	0	2	0	0
7	TROELSGAARD Sanne	3	1	33%	0	0	0	0	0	1	1	1	0	0	1	2	3	0	0
18	GEVITZ Luna	0	0	0%	0	0	0	0	0	0	0	0	0	0	0	0	0	0	0
20	BRUUN Signe	4	3	75%	0	0	0	0	0	1	2	0	1	2	0	2	4	0	0
21	GEJL Mille	4	3	75%	0	0	1	1	0	0	1	1	0	1	2	1	4	0	0

# Passing Networks

# Haiti



#	Passes From ↓ to →	THEUS Kerly	SURPRIS Chelsea	JOSEPH Tabita	DUMORNAY Melchie	LOUIS Batcheba	JEUDY Sherly	MONDESIR Nerilia	ELOISSAINT Roseline	PETIT-FRERE Betina	PIERRE-LOUIS Dayana	LOUIS Kethna	MATHURIN Ruthny	BORGELLA Roselord
1	THEUS Kerly		3	4	0	1	0	0	2	3	0	2	2	0
2	SURPRIS Chelsea	0		1	1	0	1	1	4	1	0	0	0	0
4	JOSEPH Tabita	1	0		1	2	1	1	0	0	1	2	3	1
6	DUMORNAY Melchie	0	1	1		1	5	2	1	3	1	1	0	1
7	LOUIS Batcheba	0	0	0	1		0	3	1	0	1	0	0	0
9	JEUDY Sherly	1	1	1	2	3		4	5	1	2	1	1	0
10	MONDESIR Nerilia	0	0	0	4	0	1		5	0	1	0	0	2
11	ELOISSAINT Roseline	0	4	1	3	0	0	3		0	0	2	0	0
13	PETIT-FRERE Betina	0	3	0	0	0	1	1	0		0	0	0	0
19	PIERRE-LOUIS Dayana	1	1	1	5	1	1	0	2	0		1	0	0
20	LOUIS Kethna	1	0	1	3	4	0	0	0	0	0		0	1
21	MATHURIN Ruthny	0	0	2	0	1	0	0	0	0	0	1		1
22	BORGELLA Roselord	0	2	1	0	0	1	0	1	0	0	1	0	

Top 5 Player to Player Passers		
Player	Passed To	% of Total Team Passes
DUMORNAY Melchie	JEUDY Sherly	3.4%
JEUDY Sherly	ELOISSAINT Roseline	3.4%
MONDESIR Nerilia	ELOISSAINT Roseline	3.4%
PIERRE-LOUIS Dayana	DUMORNAY Melchie	3.4%
THEUS Kerly	JOSEPH Tabita	2.7%

# Passing Networks



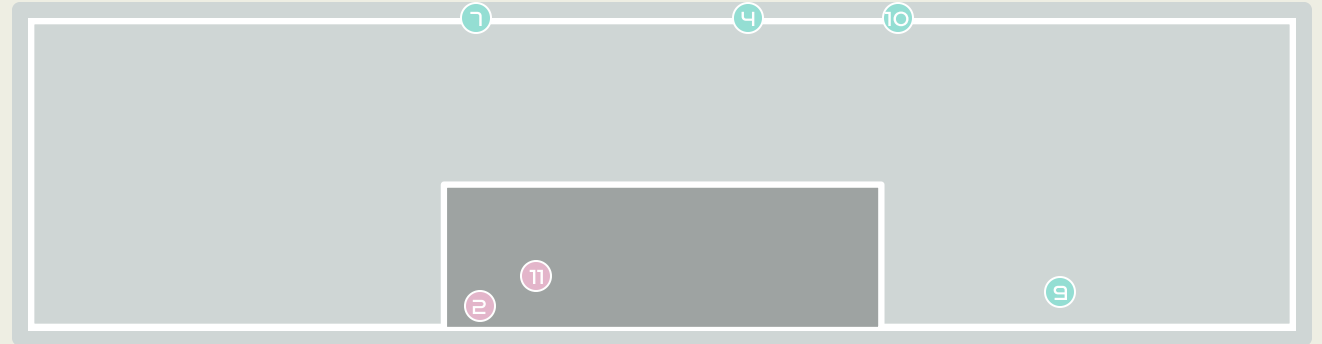
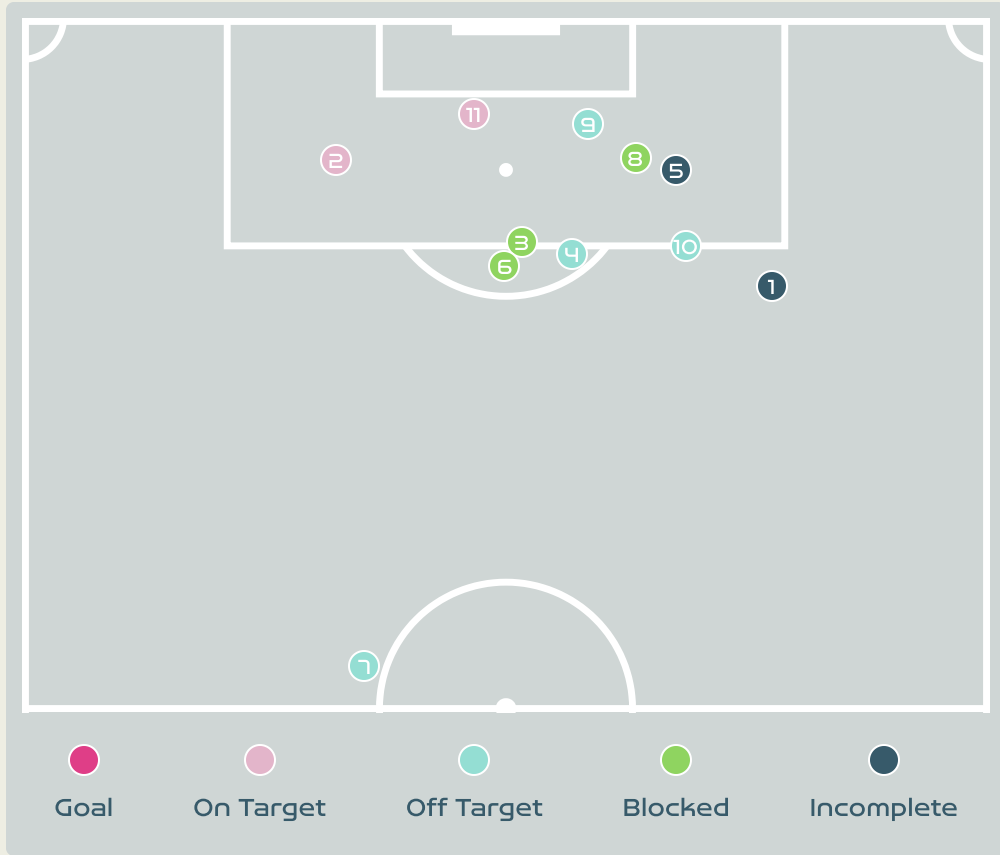
#	Passes From ↓ to →	CHRISTENSEN Lene	SEVECKE Rikke	BOYE Simone	HOLMGAARD Karen	VANGSGAARD Amalie	HARDER Pernille	VEJE Katrine	KUHL Kathrine	SORENSEN Nicoline	MADSEN Rikke Marie	THOMSEN Janni	HASBO Josefine	TROELSGAARD Sanne	GEVITZ Luna	BRUUN Signe	GEJL Mille
1	CHRISTENSEN Lene		5	9	1	3	1	1	0	0	0	1	0	0	0	0	1
4	SEVECKE Rikke	7		12	0	2	2	2	5	2	0	8	0	0	0	1	0
5	BOYE Simone	5	13		1	1	1	7	5	1	1	1	0	0	0	0	3
6	HOLMGAARD Karen	0	10	3		2	2	8	1	4	1	2	0	0	0	0	0
9	VANGSGAARD Amalie	0	0	0	4		1	0	1	3	1	5	0	0	0	1	1
10	HARDER Pernille	0	0	0	1	4		2	3	5	3	1	1	1	0	1	2
11	VEJE Katrine	1	0	12	10	0	1		5	1	8	0	0	1	0	2	2
12	KUHL Kathrine	0	3	0	5	5	3	7		3	2	6	0	0	0	0	0
14	SORENSEN Nicoline	0	2	0	0	4	1	2	0		0	5	0	0	0	0	0
17	MADSEN Rikke Marie	1	0	1	2	2	3	4	1	0		1	0	0	0	0	0
19	THOMSEN Janni	0	9	1	0	3	3	1	3	3	0		0	0	0	1	0
2	HASBO Josefine	0	1	0	0	4	0	0	0	0	0	0		0	0	0	0
7	TROELSGAARD Sanne	0	0	0	0	1	0	1	0	0	0	0	0		0	1	0
18	GEVITZ Luna	0	0	0	0	0	0	0	0	0	0	0	0	0		0	0
20	BRUUN Signe	0	0	0	0	1	2	0	0	0	0	0	0	1	0		2
21	GEJL Mille	0	1	0	0	0	3	7	0	0	0	0	1	1	0	0	

## Top 5 Player to Player Passers

Player	Passed To	% of Total Team Passes
BOYE Simone	SEVECKE Rikke	3.9%
SEVECKE Rikke	BOYE Simone	3.6%
VEJE Katrine	BOYE Simone	3.6%
HOLMGAARD Karen	SEVECKE Rikke	3%
VEJE Katrine	HOLMGAARD Karen	3%



# Attempts at Goal



Key	Outcome	Shots
<span style="color: red;">●</span>	Goals	0
<span style="color: pink;">●</span>	On Target	2
<span style="color: cyan;">●</span>	Off Target	4
<span style="color: green;">●</span>	Blocked	3
<span style="color: darkblue;">●</span>	Incomplete	2

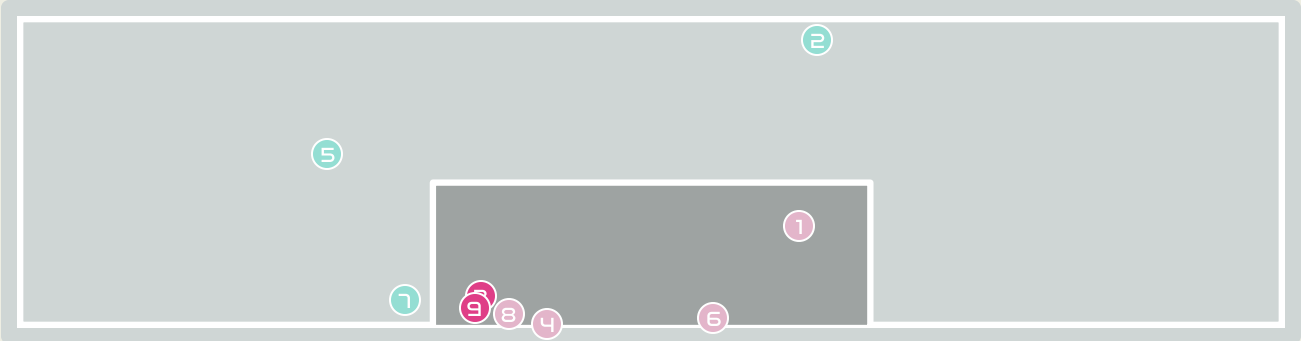
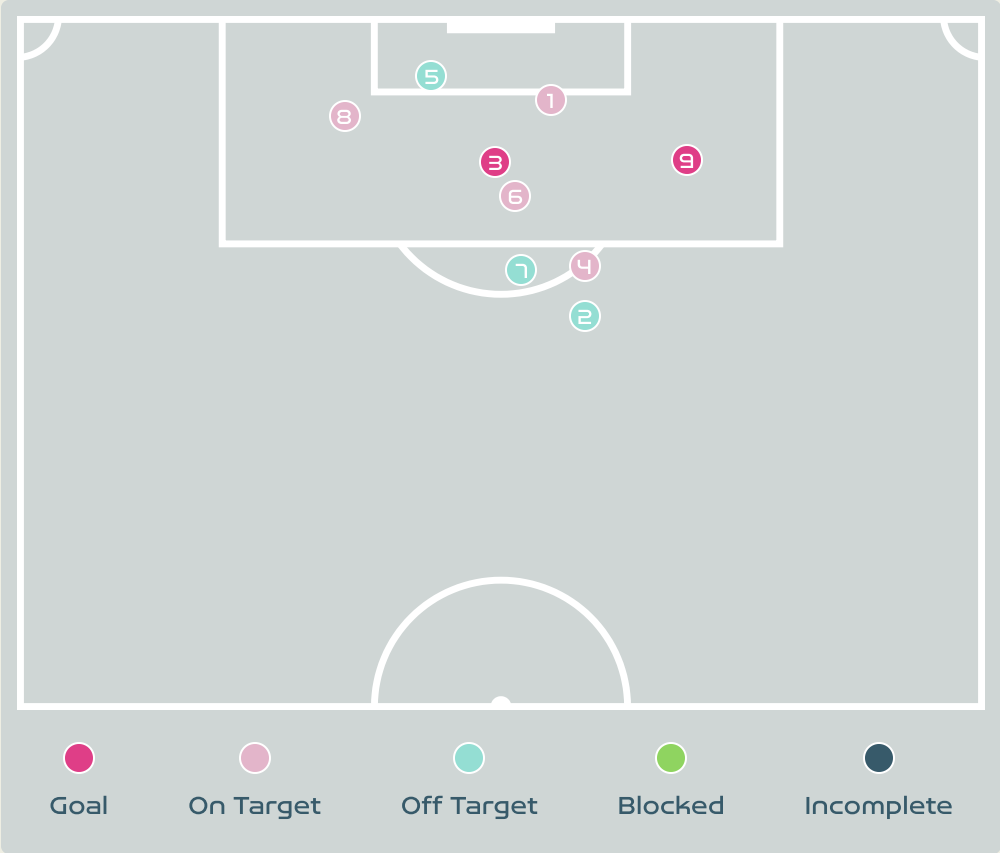
Haiti



## Attempts at Goal

Time	Player	Outcome	Body Part	Delivery Type
27	11 ELOISSAINT Roseline	Incomplete - Player On Ball Error	Right Foot	Interception
28	10 MONDESIR Nerilia	On Target - Saved	Right Foot	Pass
29	10 MONDESIR Nerilia	Incomplete - Blocked	Left Foot	Pass
38	7 LOUIS Batcheba	Off Target	Head	Freekick
47	6 DUMORNAY Melchie	Deflected On Target - Defensive Event	Left Foot	Other
58	9 JEUDY Sherly	Incomplete - Blocked	Right Foot	Pass
63	10 MONDESIR Nerilia	Off Target	Right Foot	Pass
65	6 DUMORNAY Melchie	Incomplete - Blocked	Left Foot	Pass
68	4 JOSEPH Tabita	Off Target	Right Foot	Corner
73	22 BORGELLA Roselord	Deflected Off Target - Defensive Event	Right Foot	Pass
75	7 LOUIS Batcheba	On Target - Saved	Head	Freekick

# Attempts at Goal



Key	Outcome	Shots
<span style="color: red;">●</span>	Goals	2
<span style="color: pink;">●</span>	On Target	4
<span style="color: teal;">●</span>	Off Target	3
<span style="color: green;">●</span>	Blocked	0
<span style="color: darkblue;">●</span>	Incomplete	0



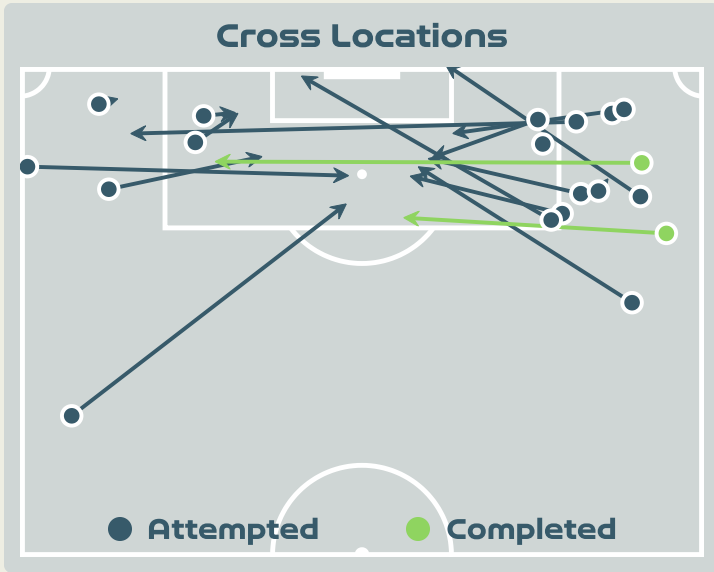
# Attempts at Goal



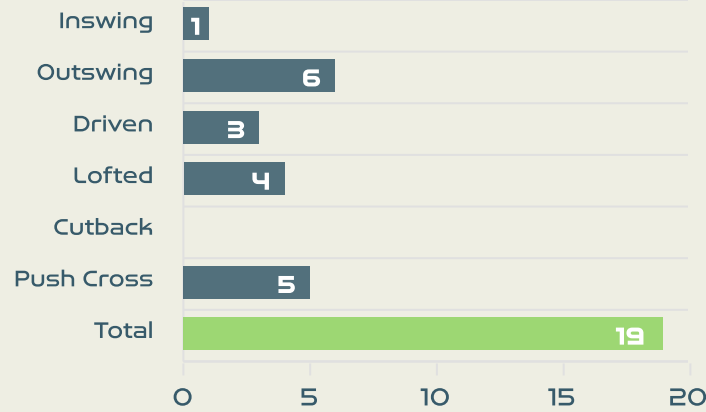
Time	Player	Outcome	Body Part	Delivery Type
2	9 VANGSGAARD Amalie	On Target - Saved	Right Foot	Pass
17	6 HOLMGAARD Karen	Off Target	Right Foot	Loose Ball
21	10 HARDER Pernille	On Target - Goal	Right Foot	Penalty
32	10 HARDER Pernille	Deflected On Target - Saved	Left Foot	Pass
46	9 VANGSGAARD Amalie	Off Target	Left Foot	Cross
53	17 MADSEN Rikke Marie	On Target - Saved	Left Foot	Loose Ball
89	2 HASBO Josefine	Deflected Off Target - Defensive Event	Right Foot	Pass
91	21 GEJL Mille	On Target - Saved	Right Foot	Pass
99	7 TROELSGAARD Sanne	On Target - Goal	Right Foot	Pass



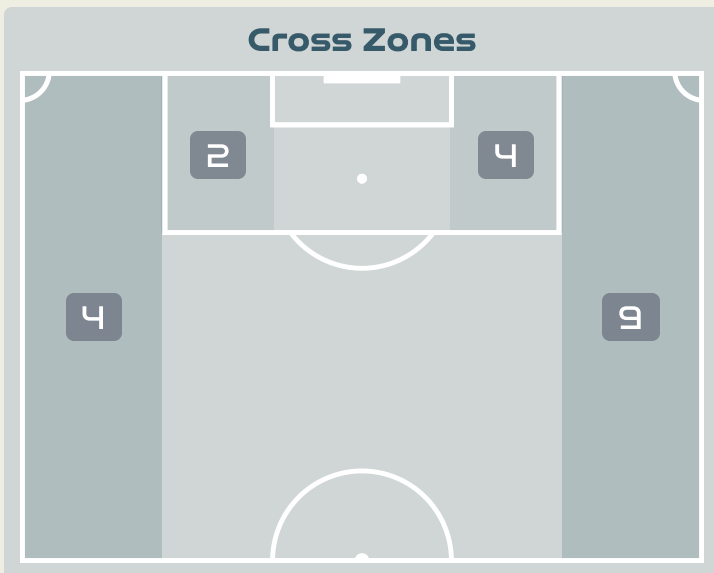
# Crosses (Open Play)



### Delivery Type



#	Player	Inswing	Outswing	Driven	Lofted	Cutback	Push Cross	Total Attempted
1	THEUS Kerly	0	0	0	0	0	0	0
2	SURPRIS Chelsea	0	0	0	0	0	0	0
4	JOSEPH Tabita	0	1	0	0	0	0	1
6	DUMORNAY Melchie	0	1	0	1	0	0	2
7	LOUIS Batcheba	0	1	0	0	0	0	1
9	JEUDY Sherly	0	0	1	0	0	1	2
10	MONDESIR Nerilia	0	2	0	1	0	3	6
11	ELOISSAINT Roseline	0	0	2	1	0	0	3
13	PETIT-FRERE Betina	0	0	0	0	0	0	0
19	PIERRE-LOUIS Dayana	0	0	0	0	0	0	0
20	LOUIS Kethna	0	0	0	1	0	1	2
21	MATHURIN Ruthny	0	1	0	0	0	0	1
22	BORGELLA Roselord	1	0	0	0	0	0	1



**Attempted**

**19**

**Completed**

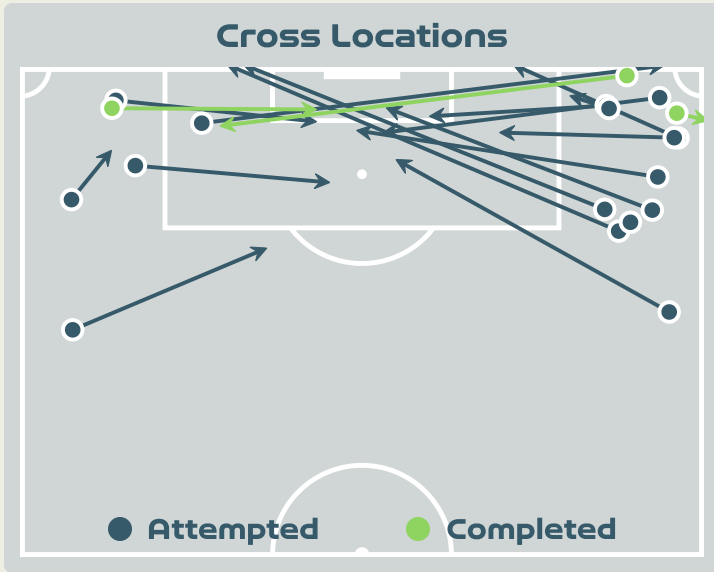
**2**

**Most Crosses Attempted**

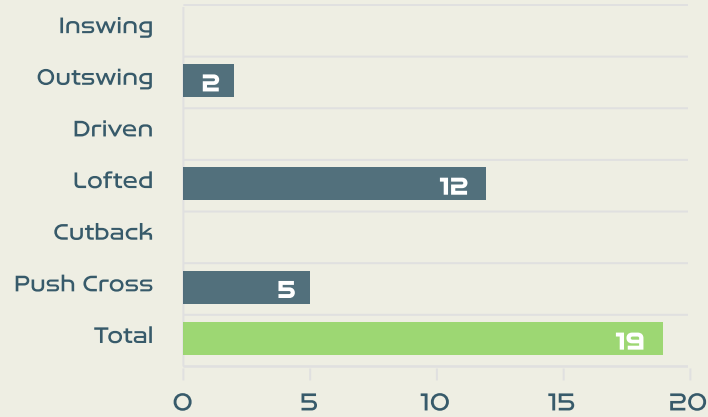
**6**

**MONDESIR Nerilia**  
CENTRE FORWARD LEFT

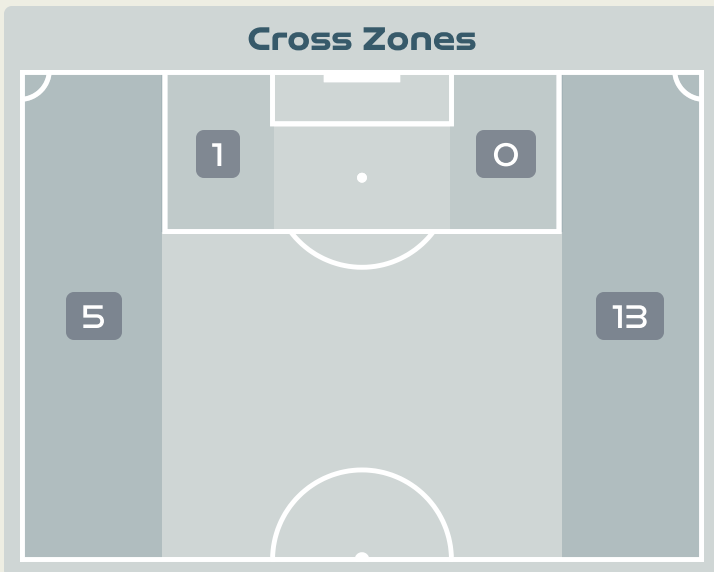
# Crosses (Open Play)



## Delivery Type



#	Player	Inswing	Outswing	Driven	Lofted	Cutback	Push Cross	Total Attempted
1	CHRISTENSEN Lene	0	0	0	0	0	0	0
4	SEVECKE Rikke	0	0	0	0	0	0	0
5	BOYE Simone	0	0	0	0	0	0	0
6	HOLMGAARD Karen	0	0	0	0	0	0	0
9	VANGSGAARD Amalie	0	2	0	1	0	0	3
10	HARDER Pernille	0	0	0	0	0	0	0
11	VEJE Katrine	0	0	0	2	0	0	2
12	KUHL Kathrine	0	0	0	0	0	0	0
14	SORENSEN Nicoline	0	0	0	7	0	2	9
17	MADSEN Rikke Marie	0	0	0	0	0	2	2
19	THOMSEN Janni	0	0	0	2	0	1	3
2	HASBO Josefine	0	0	0	0	0	0	0
7	TROELSGAARD Sanne	0	0	0	0	0	0	0
18	GEVITZ Luna	0	0	0	0	0	0	0
20	BRUUN Signe	0	0	0	0	0	0	0
21	GEJL Mille	0	0	0	0	0	0	0



Attempted

19

Completed

3

Most Crosses Attempted

9

**SORENSEN Nicoline**  
RIGHT MIDFIELD



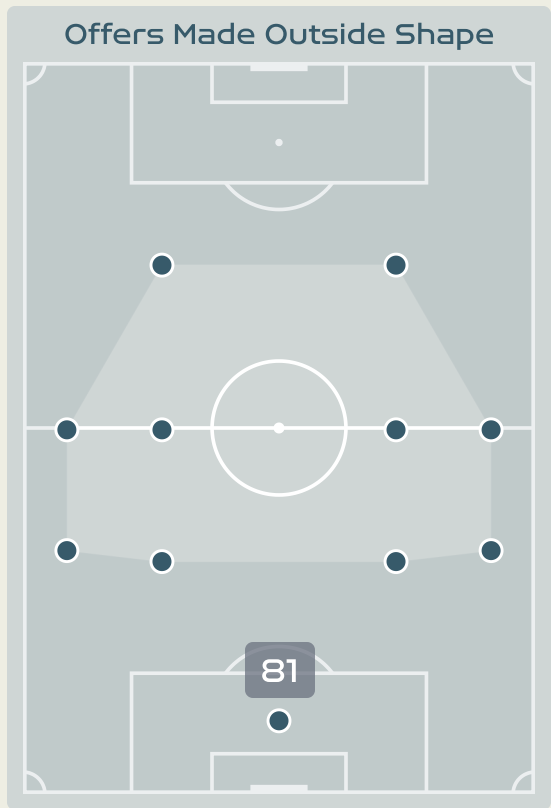
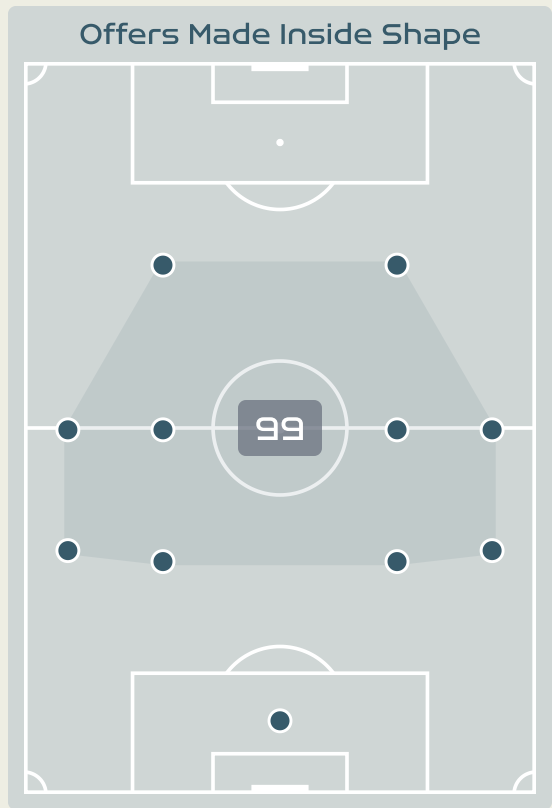
# Offering to Receive

**180**  
Total Offers Made

**51**  
Total Offers Received

**Most Offers**  
**38**  
**DUMORNAY Melchie**  
CENTRE FORWARD RIGHT

**100**  
Offers Made in Final Third



**63**  
Offers Made in Middle Third

**17**  
Offers Made in Defensive Third

#	Player	Offers Made	Offers Received	% Made & Received
1	THEUS Kerly	1	1	100%
2	SURPRIS Chelsea	8	4	50%
4	JOSEPH Tabita	4	2	50%
6	DUMORNAY Melchie	38	12	31.6%
7	LOUIS Batcheba	27	4	14.8%
9	JEUDY Sherly	10	3	30%
10	MONDESIR Nerilia	38	13	34.2%
11	ELOISSAINT Roseline	20	4	20%
13	PETIT-FRERE Betina	7	1	14.3%
19	PIERRE-LOUIS Dayana	6	1	16.7%
20	LOUIS Kethna	12	4	33.3%
21	MATHURIN Ruthny	1	0	0%
22	BORGELLA Roselord	8	2	25%

# Offering to Receive

**367**  
Total Offers Made

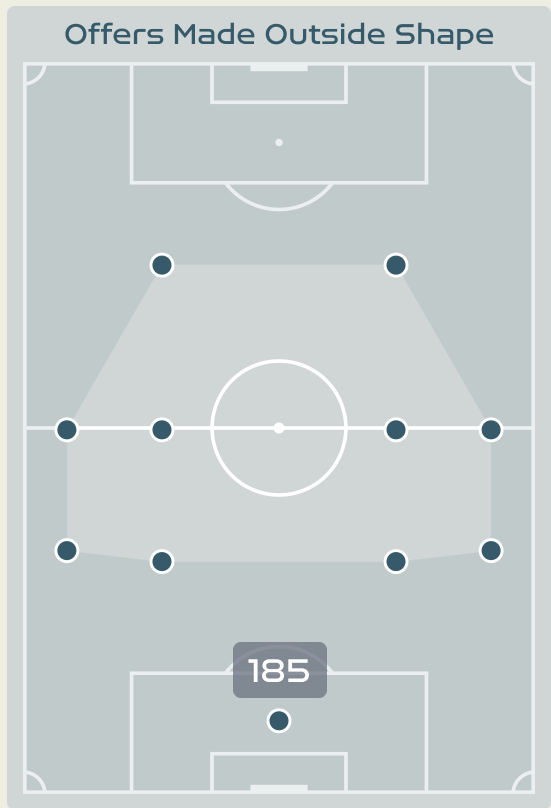
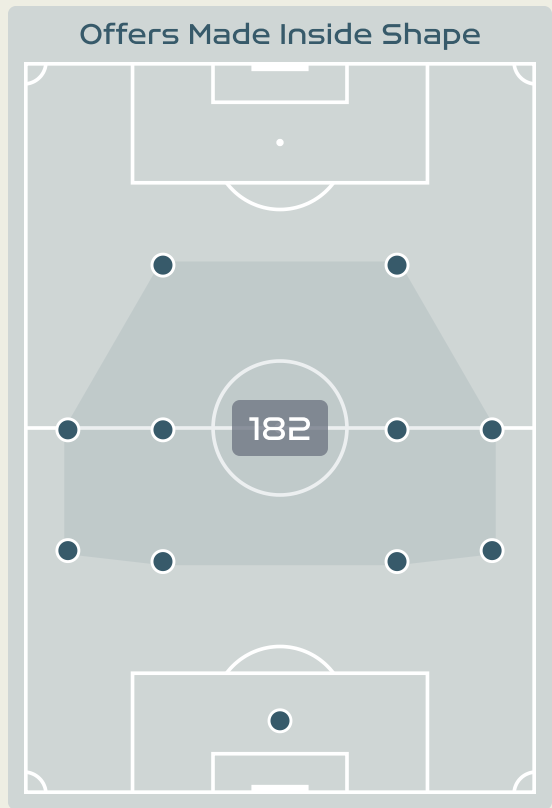
**103**  
Total Offers Received

**Most Offers**  
  
**KUHL Kathrine**  
RIGHT CENTRE MIDFIELD

**123**  
Offers Made in Final Third

**192**  
Offers Made in Middle Third

**52**  
Offers Made in Defensive Third



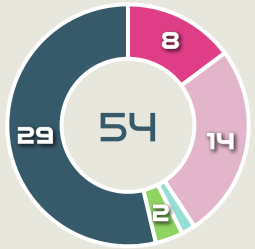
#	Player	Offers Made	Offers Received	% Made & Received
1	CHRISTENSEN Lene	14	2	14.3%
4	SEVECKE Rikke	13	6	46.2%
5	BOYE Simone	2	2	100%
6	HOLMGAARD Karen	31	9	29%
9	VANGSGAARD Amalie	47	12	25.5%
10	HARDER Pernille	56	11	19.6%
11	VEJE Katrine	13	8	61.5%
12	KUHL Kathrine	77	16	20.8%
14	SORENSEN Nicoline	27	5	18.5%
17	MADSEN Rikke Marie	24	7	29.2%
19	THOMSEN Janni	28	15	53.6%
2	HASBO Josefine	8	1	12.5%
7	TROELSGAARD Sanne	3	2	66.7%
18	GEVITZ Luna	1	0	0%
20	BRUUN Signe	12	2	16.7%
21	GEJL Mille	11	5	45.5%



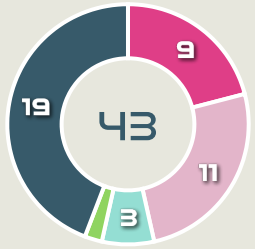
# Movement to Receive

## Movement Types by Phase

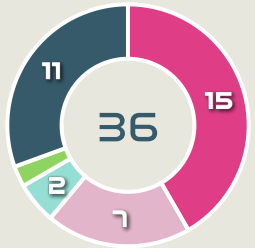
### Final Third Phase



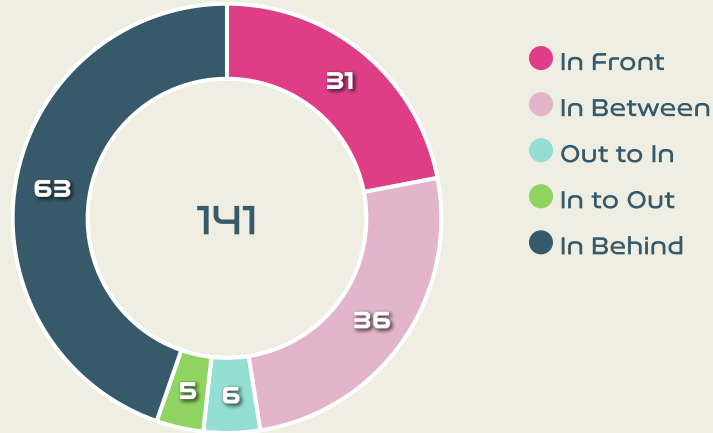
### Progression Phase



### Build Up Phase



## All Movement Types

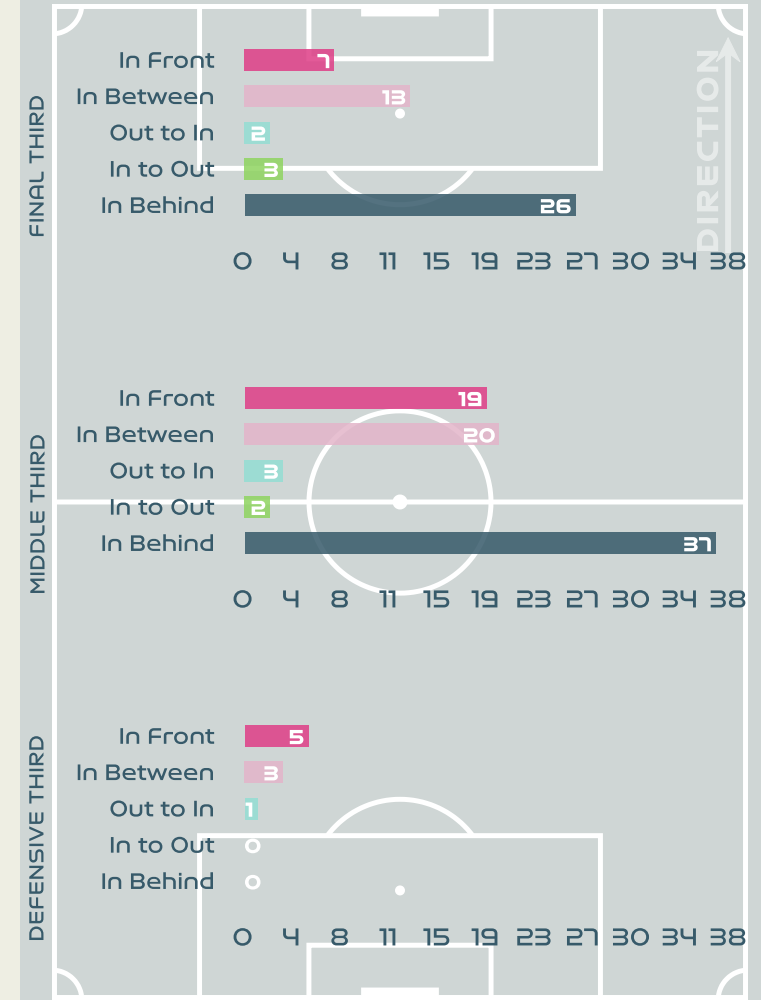


- In Front
- In Between
- Out to In
- In to Out
- In Behind

## Top Ranked Players

Type	Player	Movements
In Front	9 JEUDY Sherly	8
In Between	6 DUMORNAY Melchie	18
Out to In	7 LOUIS Batcheba	4
In to Out	6 DUMORNAY Melchie	2
In Behind	10 MONDESIR Nerilia	29

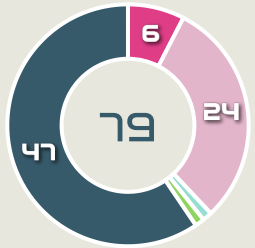
## Movement Types Pitch Third



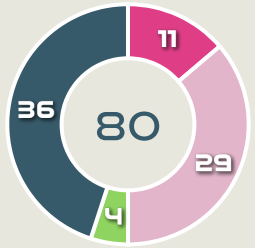
# Movement to Receive

## Movement Types by Phase

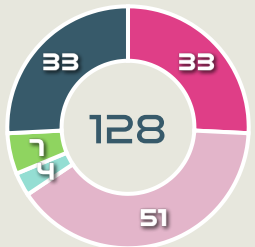
### Final Third Phase



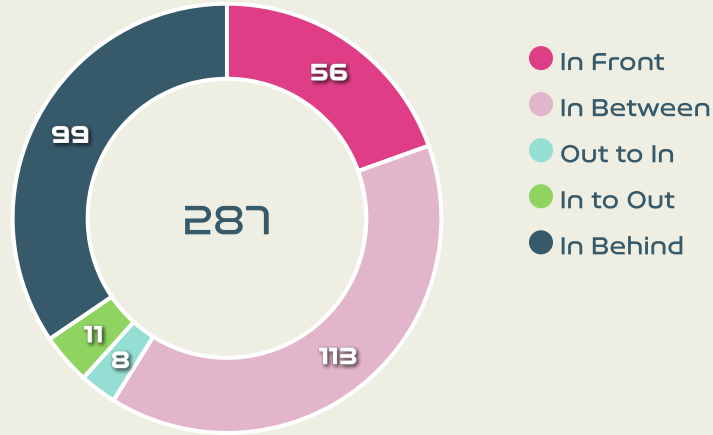
### Progression Phase



### Build Up Phase



## All Movement Types

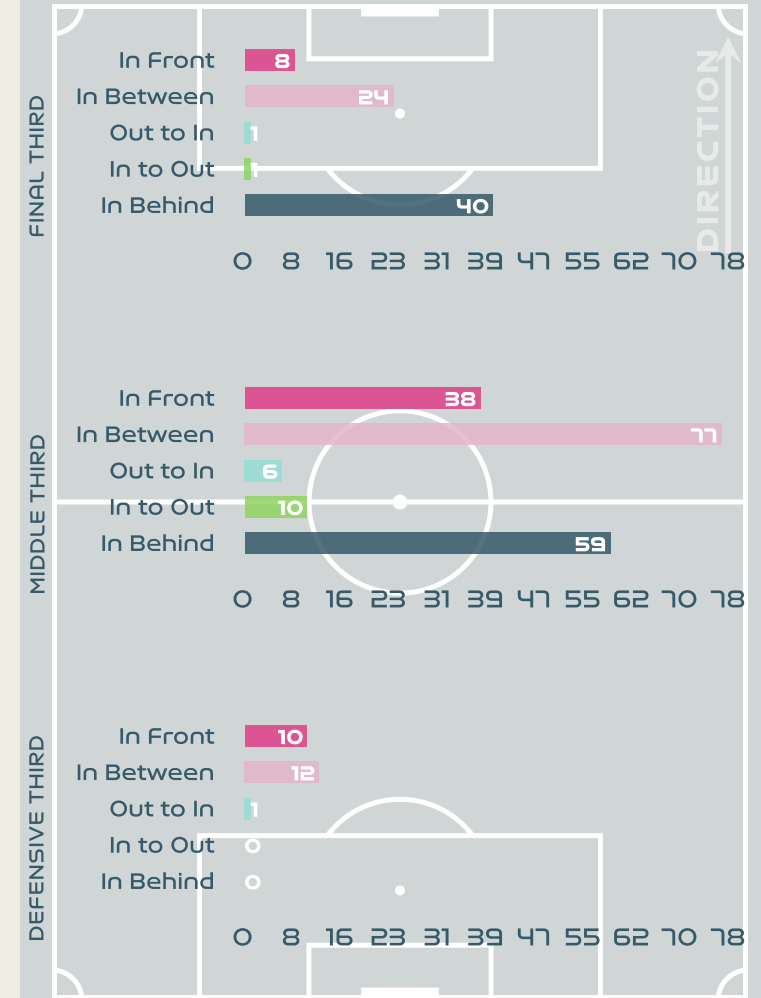


- In Front
- In Between
- Out to In
- In to Out
- In Behind

## Top Ranked Players

Type	Player	Movements
In Front	12 KUHL Kathrine	30
In Between	12 KUHL Kathrine	40
Out to In	10 HARDER Pernille	4
In to Out	10 HARDER Pernille	4
In Behind	9 VANGSGAARD Amalie	31

## Movement Types Pitch Third





# OUT OF POSSESSION



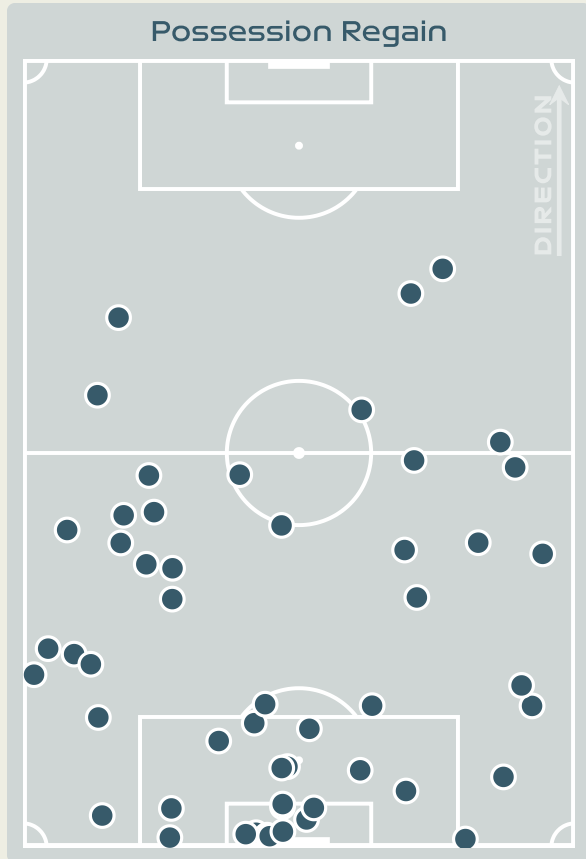
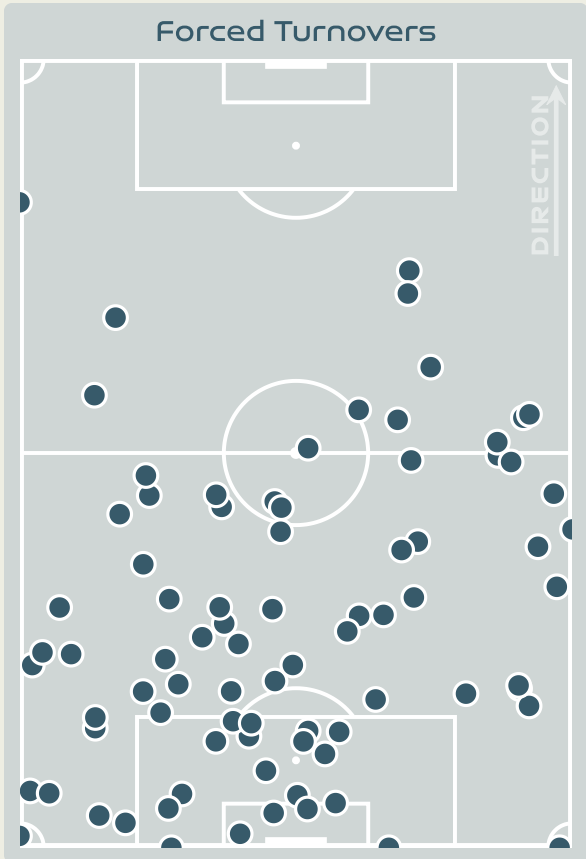
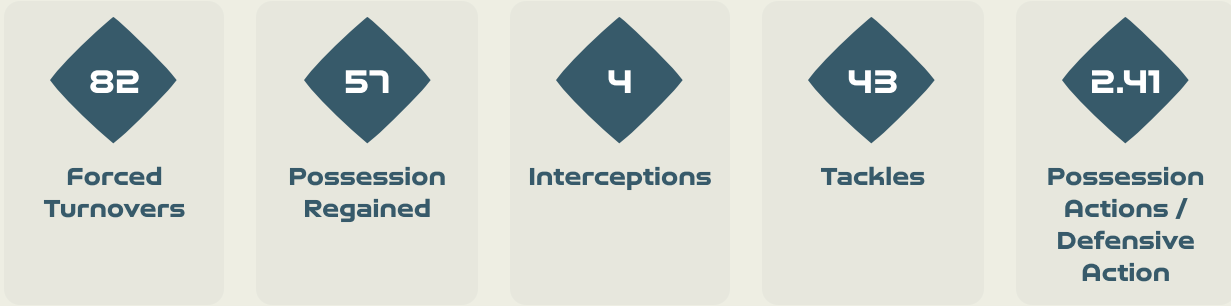
Haiti v Denmark







# Defensive Actions



## Blocks



## Possession Contests



## Most Possession Regains



#	Player	Total Possession Regains
1	THEUS Kerly	16
2	SURPRIS Chelsea	5
4	JOSEPH Tabita	5
6	DUMORNAY Melchie	4
7	LOUIS Batcheba	4
9	JEUDY Sherly	4
10	MONDESIR Nerilia	0
11	ELOISSAINT Roseline	2
13	PETIT-FRERE Betina	3
19	PIERRE-LOUIS Dayana	4
20	LOUIS Kethna	9
21	MATHURIN Ruthny	1
22	BORGELLA Roselord	0

# Defensive Actions

**100**

Forced Turnovers

**66**

Possession Regained

**10**

Interceptions

**37**

Tackles

**3.13**

Possession Actions / Defensive Action

## Blocks



## Possession Contests

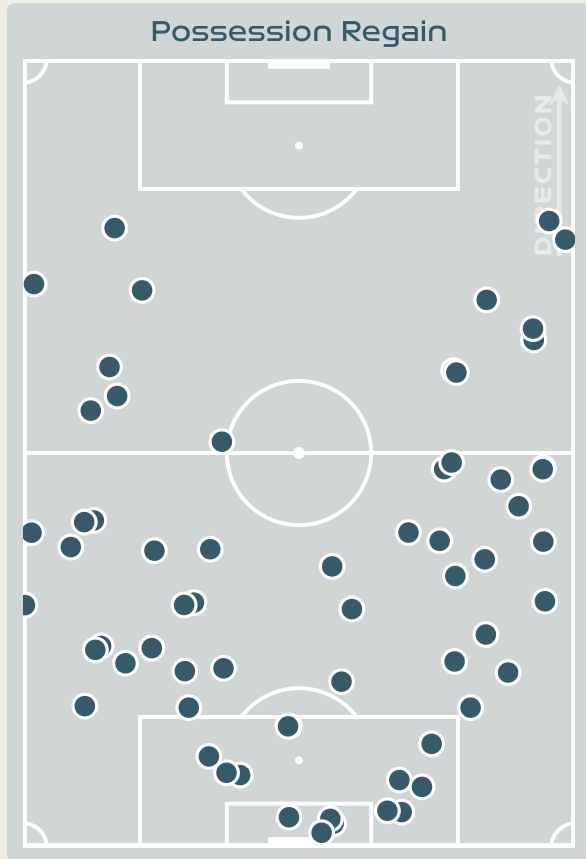
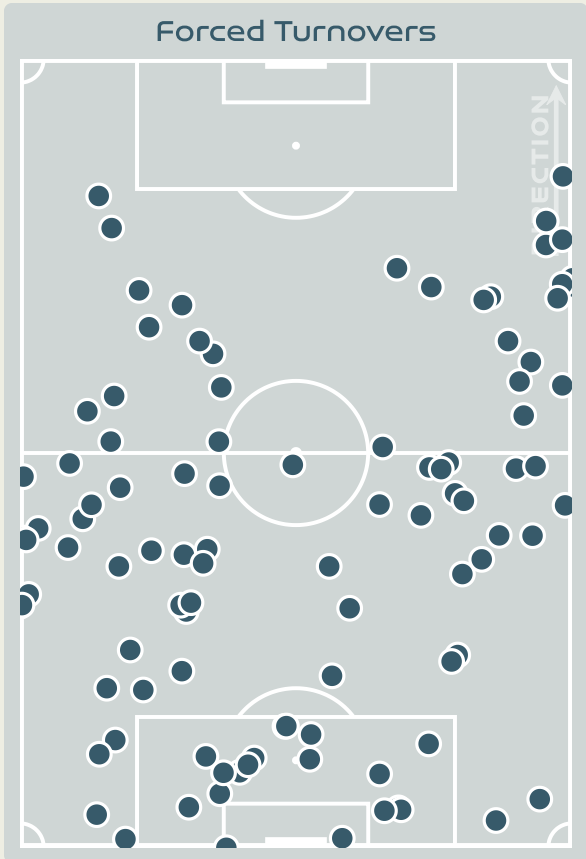


## Most Possession Regains

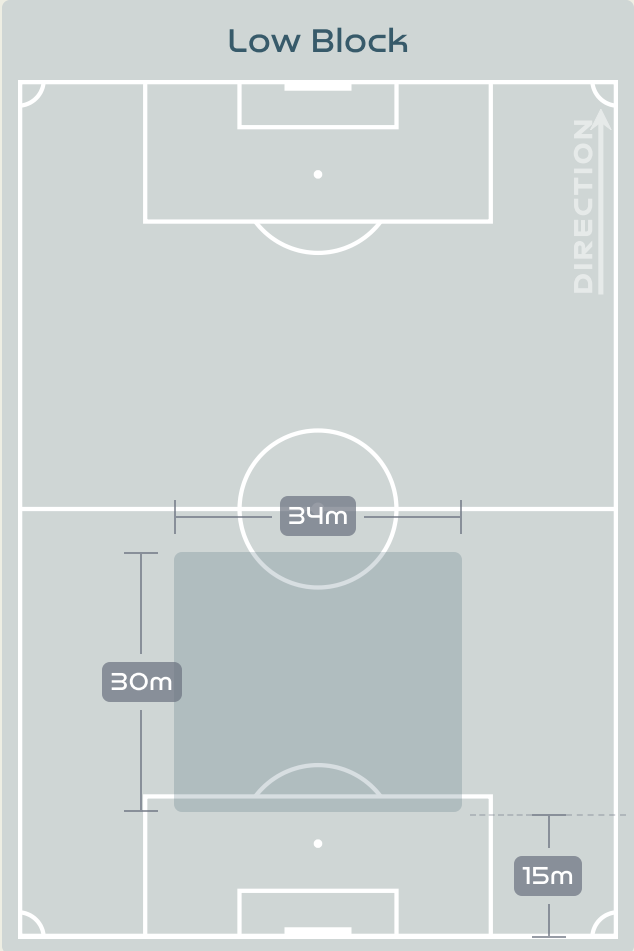
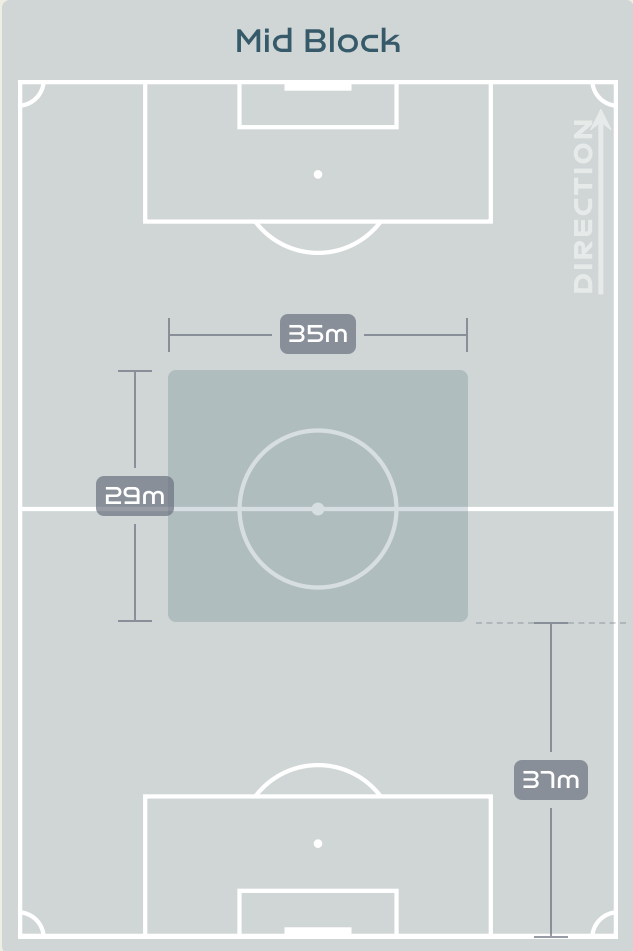
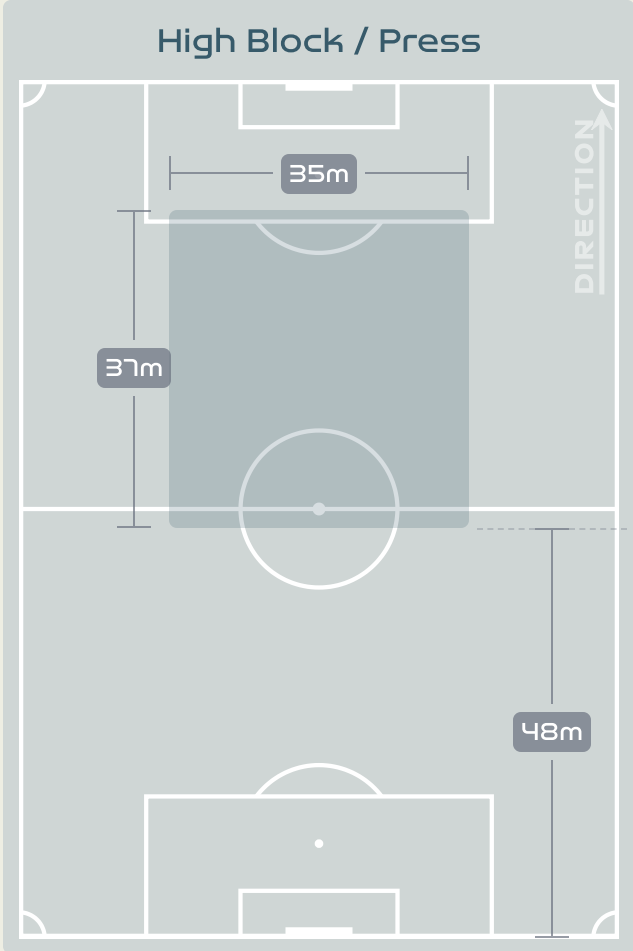
**11**

**SEVECKE Rikke**  
RIGHT CENTRE BACK

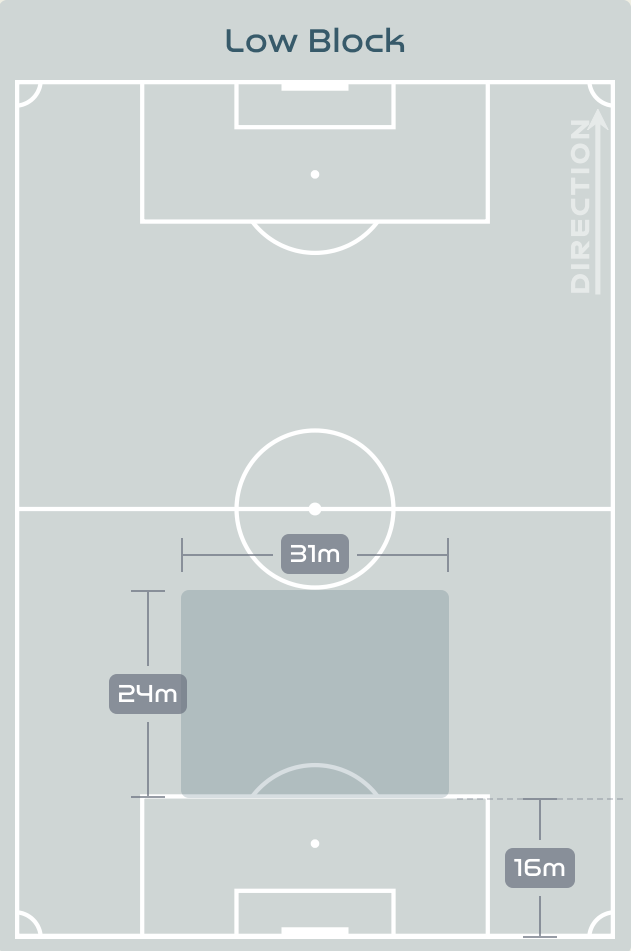
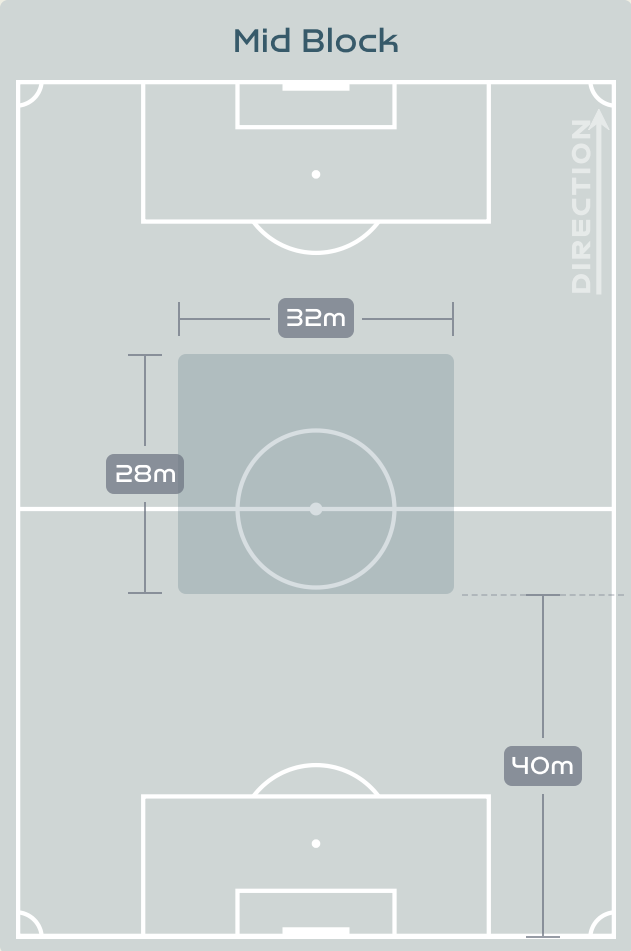
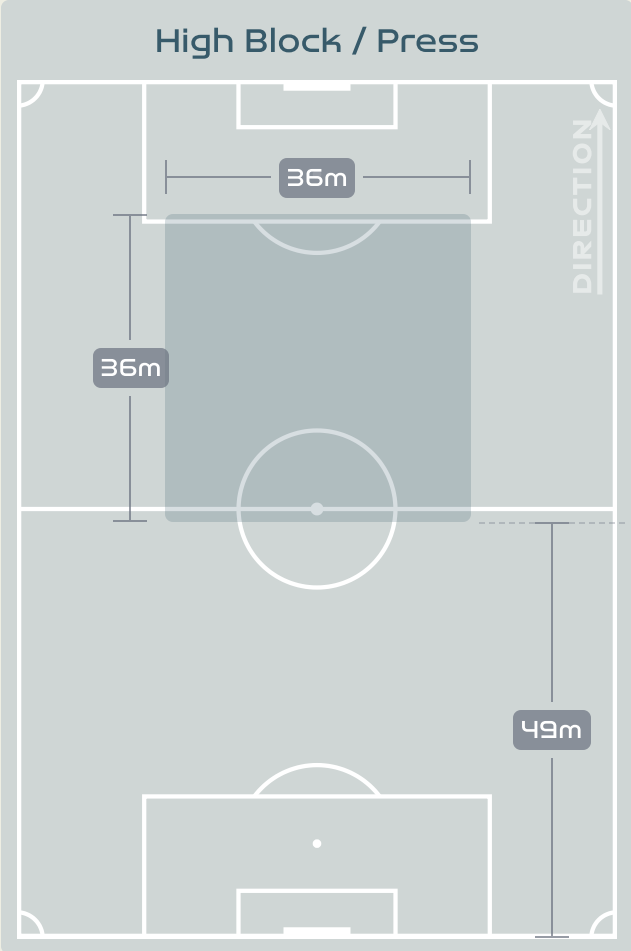
#	Player	Total Possession Regains
1	CHRISTENSEN Lene	5
4	SEVECKE Rikke	11
5	BOYE Simone	7
6	HOLMGAARD Karen	7
9	VANGSGAARD Amalie	1
10	HARDER Pernille	2
11	VEJE Katrine	11
12	KUHL Kathrine	5
14	SORENSEN Noline	4
17	MADSEN Rikke Marie	3
19	THOMSEN Janni	5
2	HASBO Josefine	3
7	TROELSGAARD Sanne	1
18	GEVITZ Luna	0
20	BRUUN Signe	0
21	GEJL Mille	1



# Defensive Line Height & Team Length



# Defensive Line Height & Team Length



# Defensive Pressure



Haiti



229	Total Pressures	171
55	Direct Pressures	53
1.72s	Avg Pressure Duration	1.39s
82	Forced Turnovers	100
8.77s	Ball Recovery Time	8.01s
74	Pushing on into Pressing	52
200	Pushing on	110
36	Pressing Direction Inside	32
125	Pressing Direction Outside	86

**Most Direct Pressures**

**12**

**ELOISSAINT Roseline**  
RIGHT MIDFIELD

**Most Direct Pressures**

**9**

**VANGSGAARD Amalie**  
CENTRE FORWARD RIGHT

Denmark





# GOALKEEPING



Haiti v Denmark

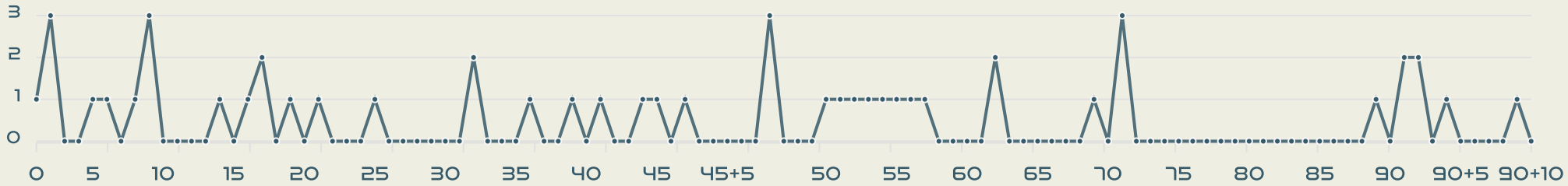


# Goalkeeping Involvement



Haiti

### Haiti GK Involvement Timeline



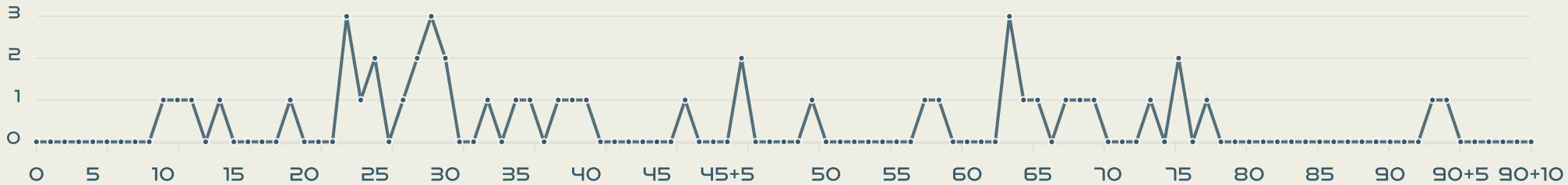
50

Total Involvements



Denmark

### Denmark GK Involvement Timeline

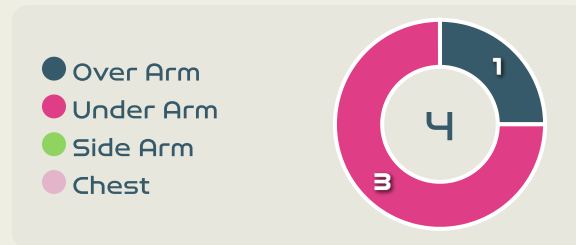
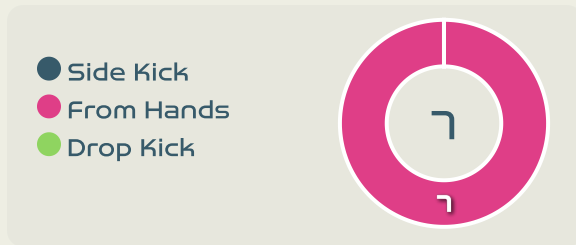
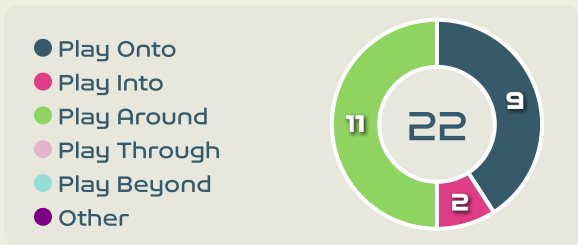
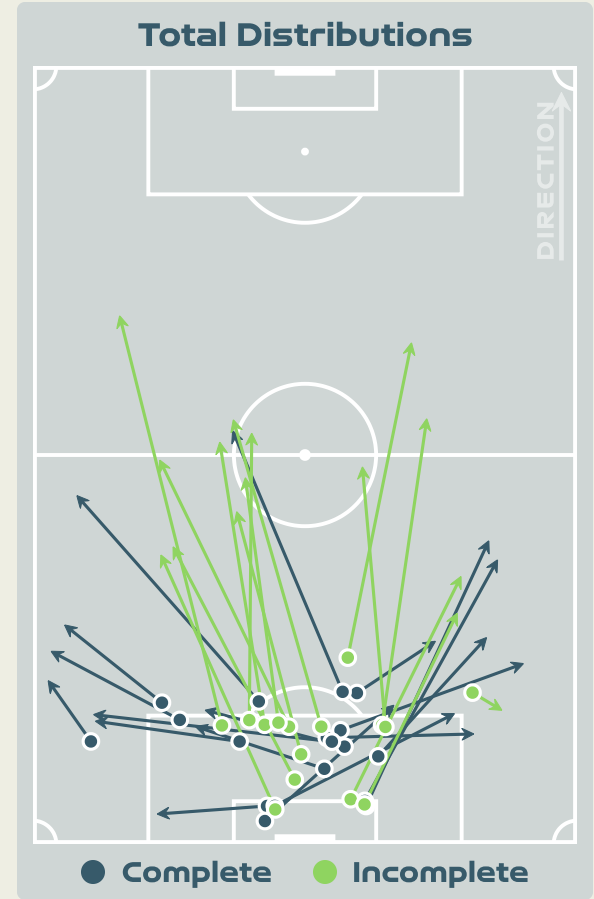
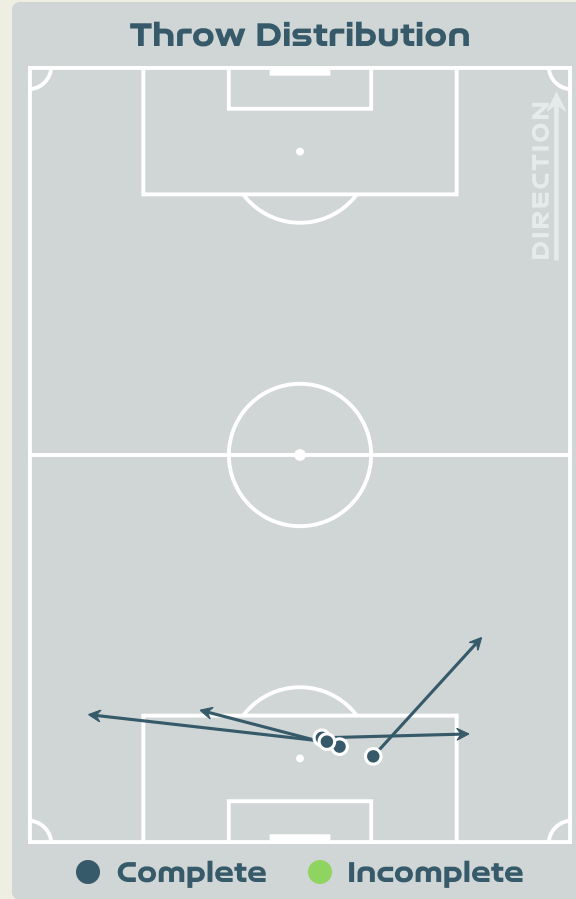
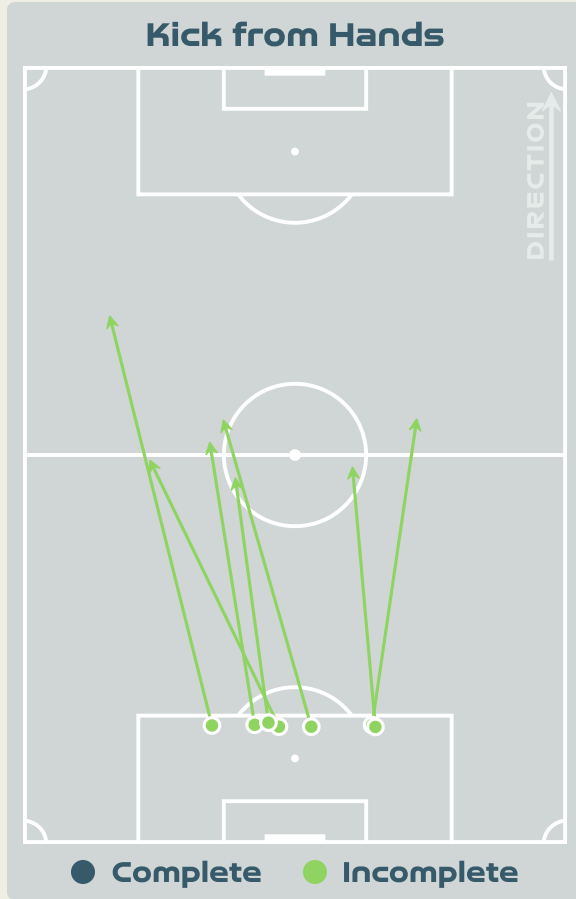
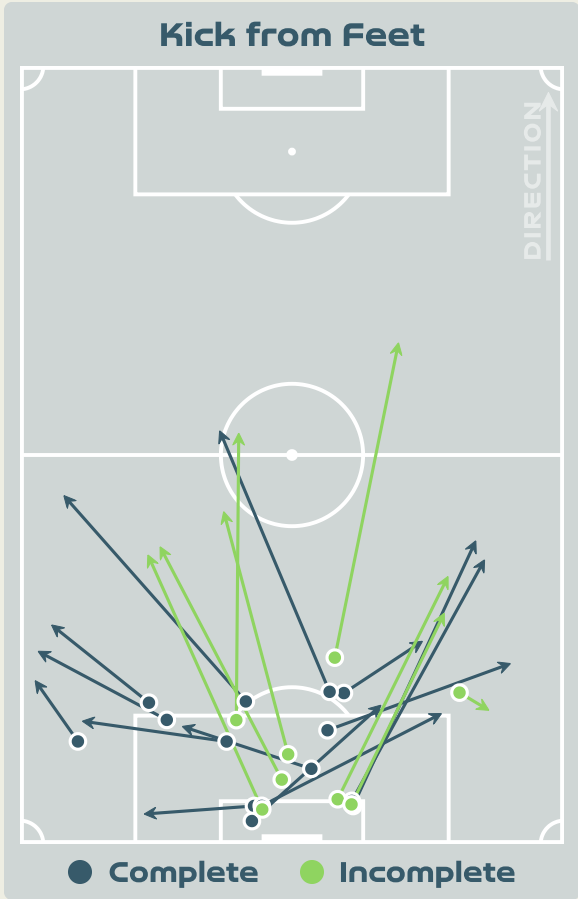


45

Total Involvements

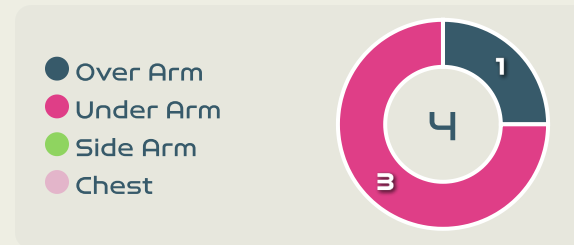
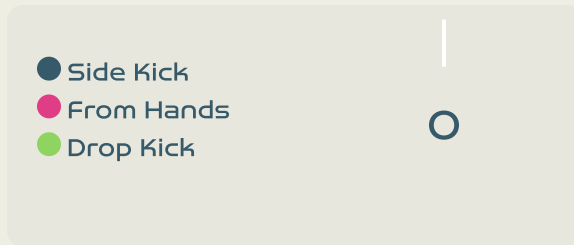
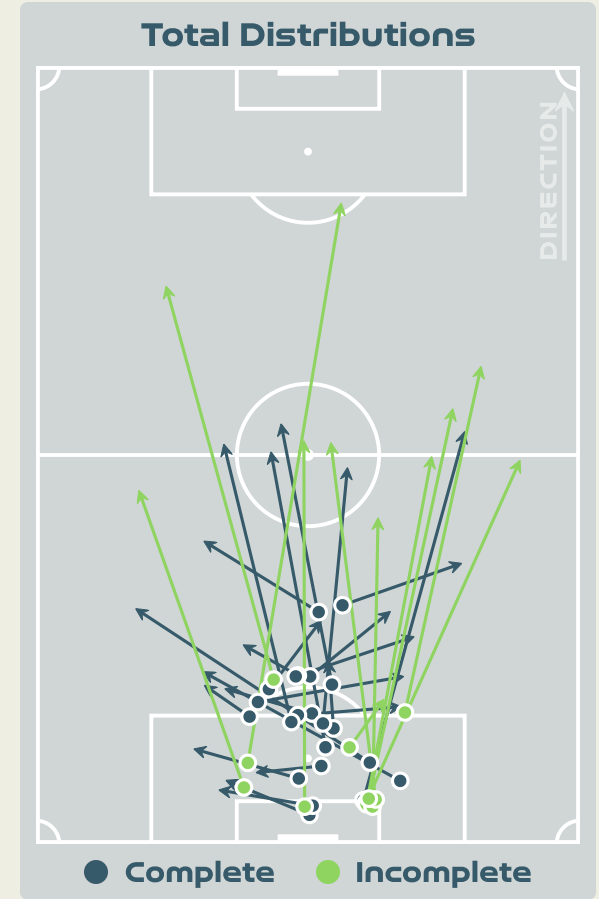
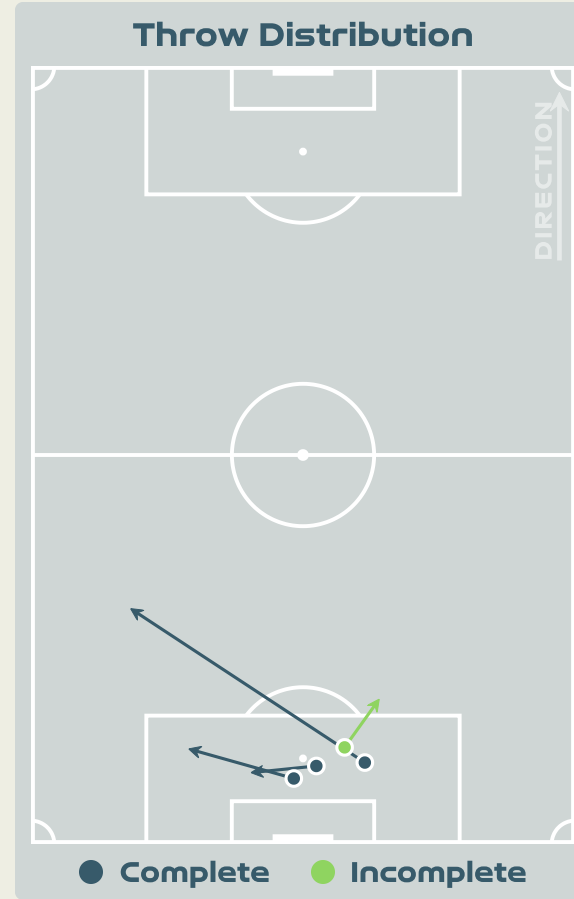
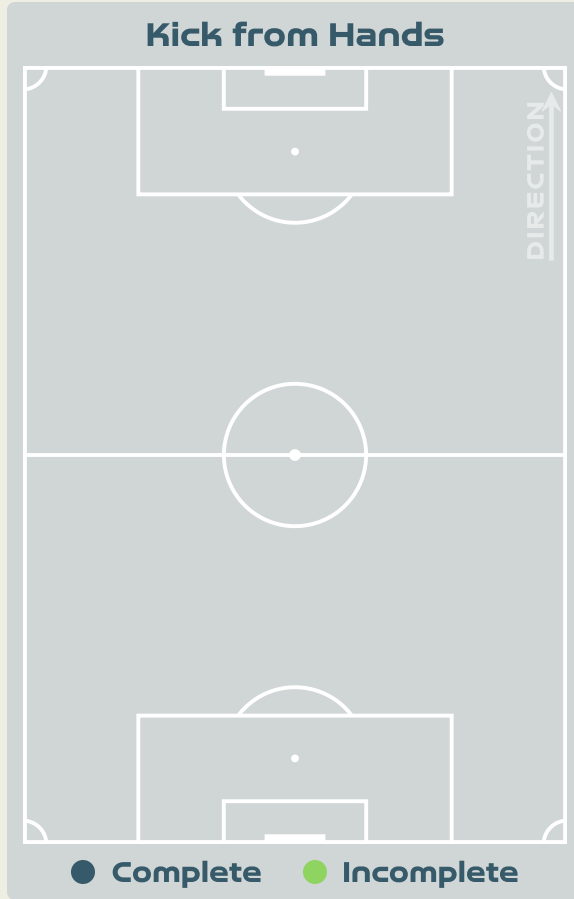
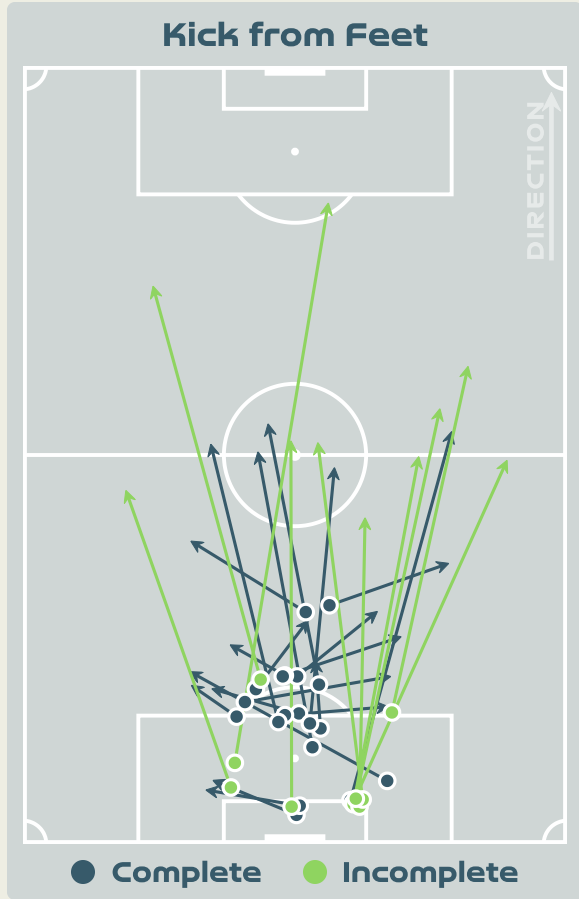


# Goalkeeping Distribution



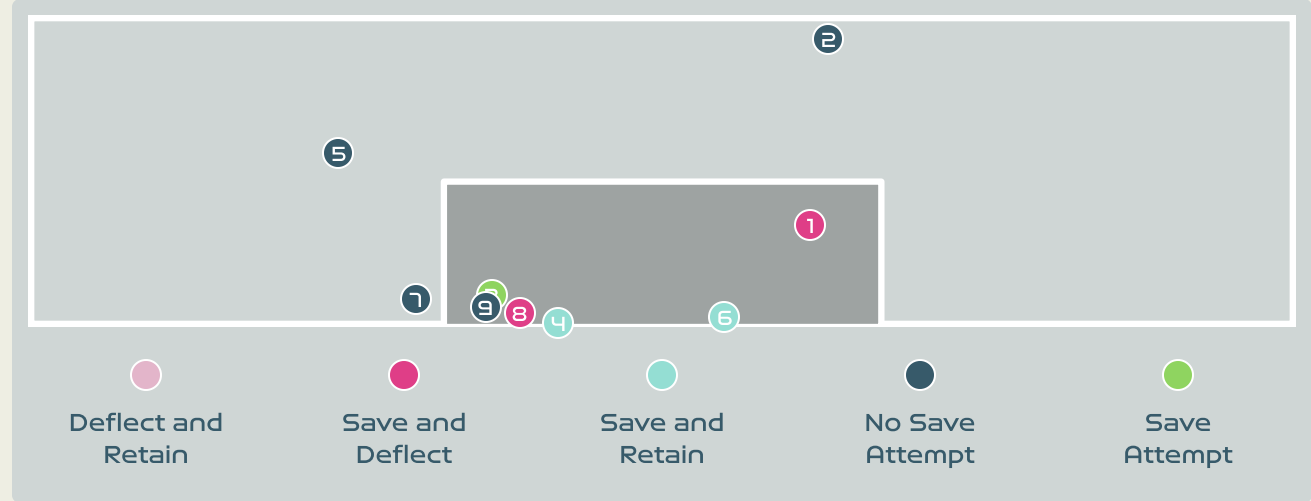
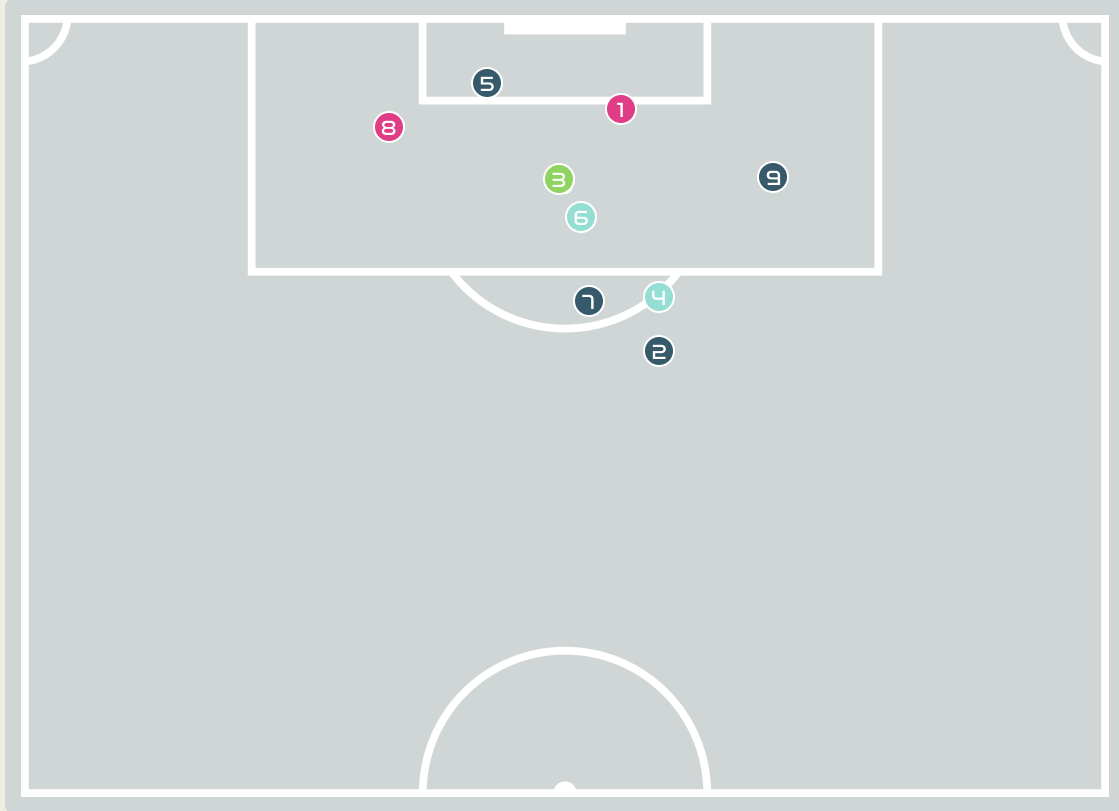


# Goalkeeping Distribution





# Goal Prevention

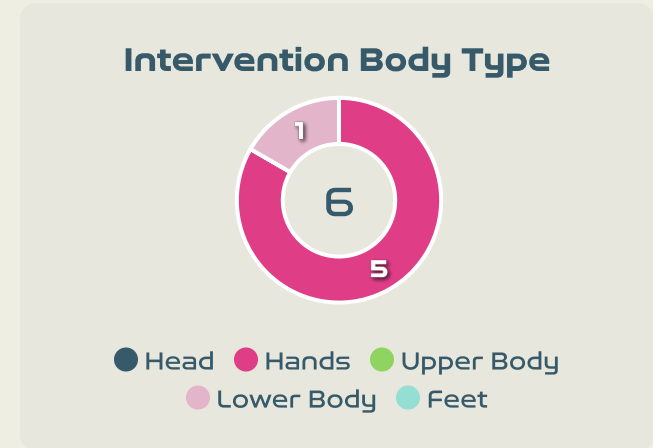
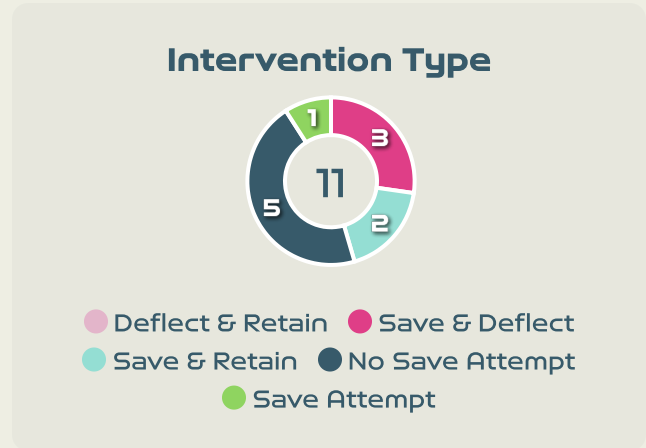


**11**

Total Attempts on Goal Faced

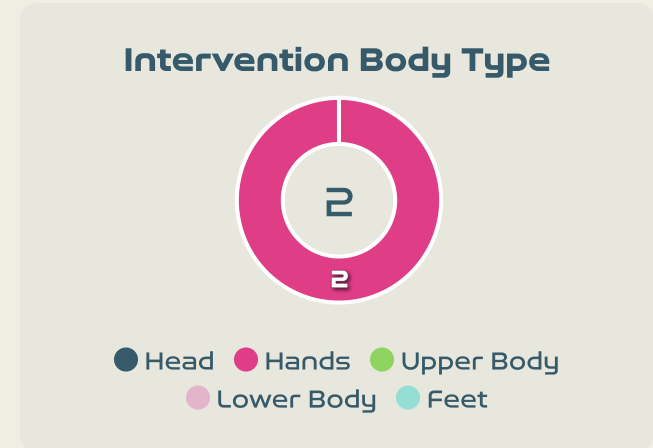
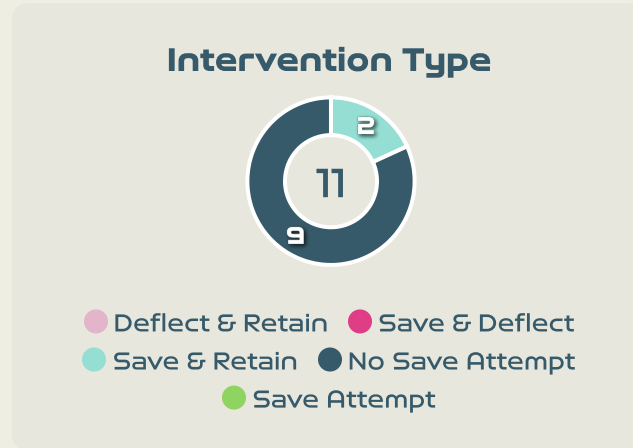
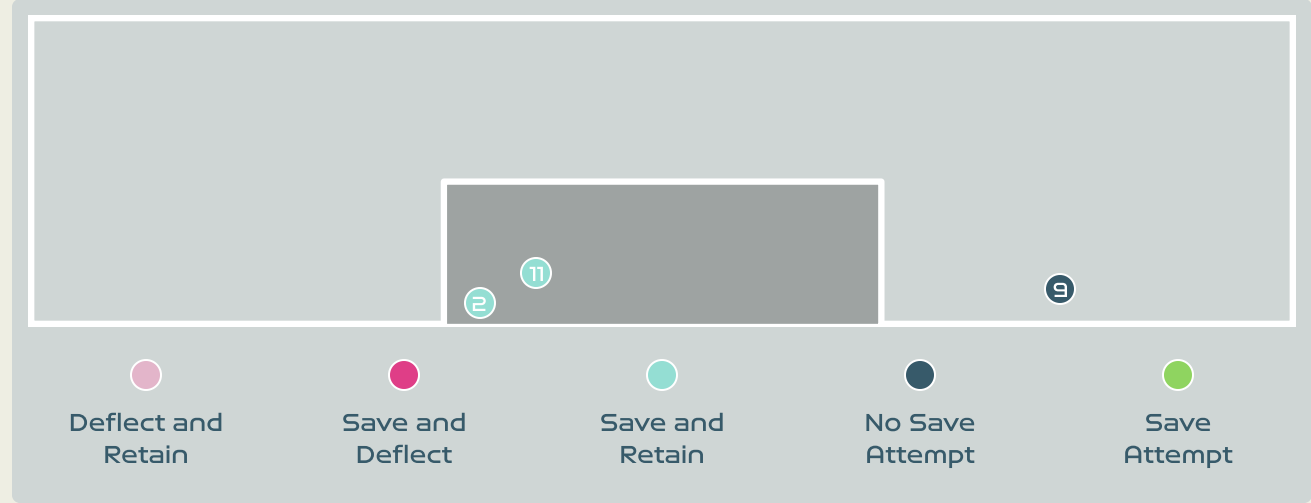
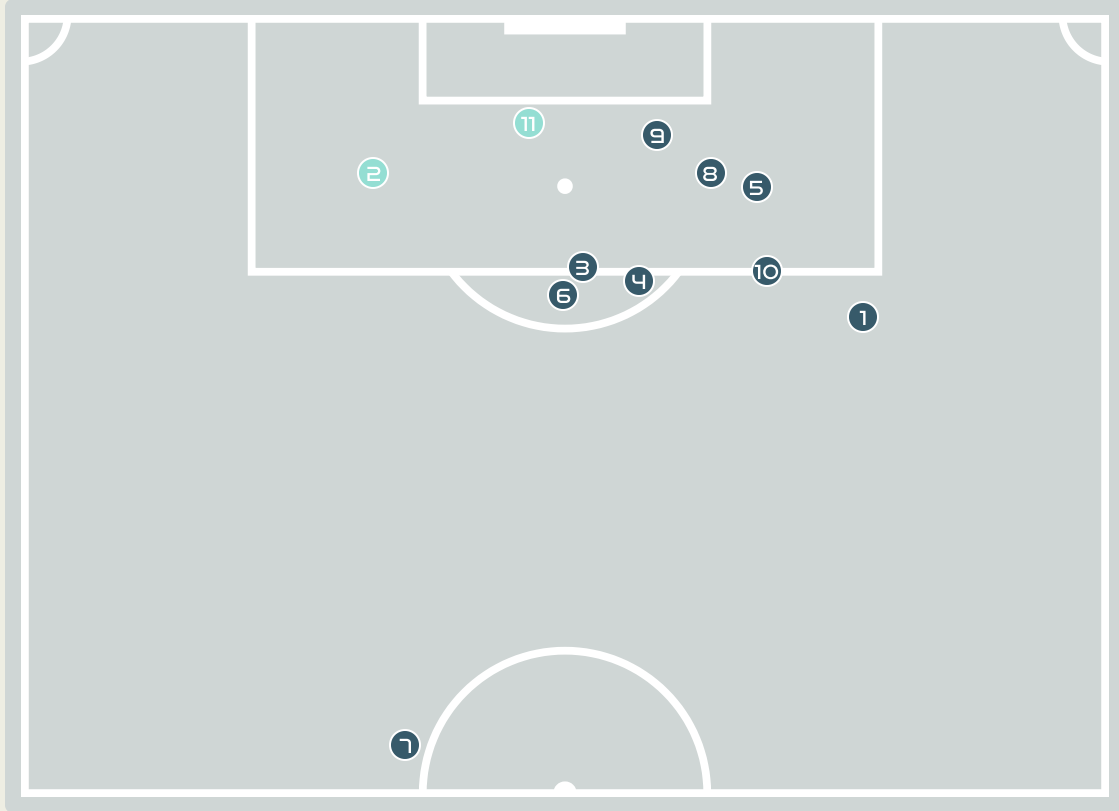
**60**

Save %



Total Attempts on Goal Faced	Total Goal Interventions	Save & Retain	Deflect & Retain	Save & Deflect	Save Attempt	No Save Attempt
11	5	2	0	3	1	5

# Goal Prevention



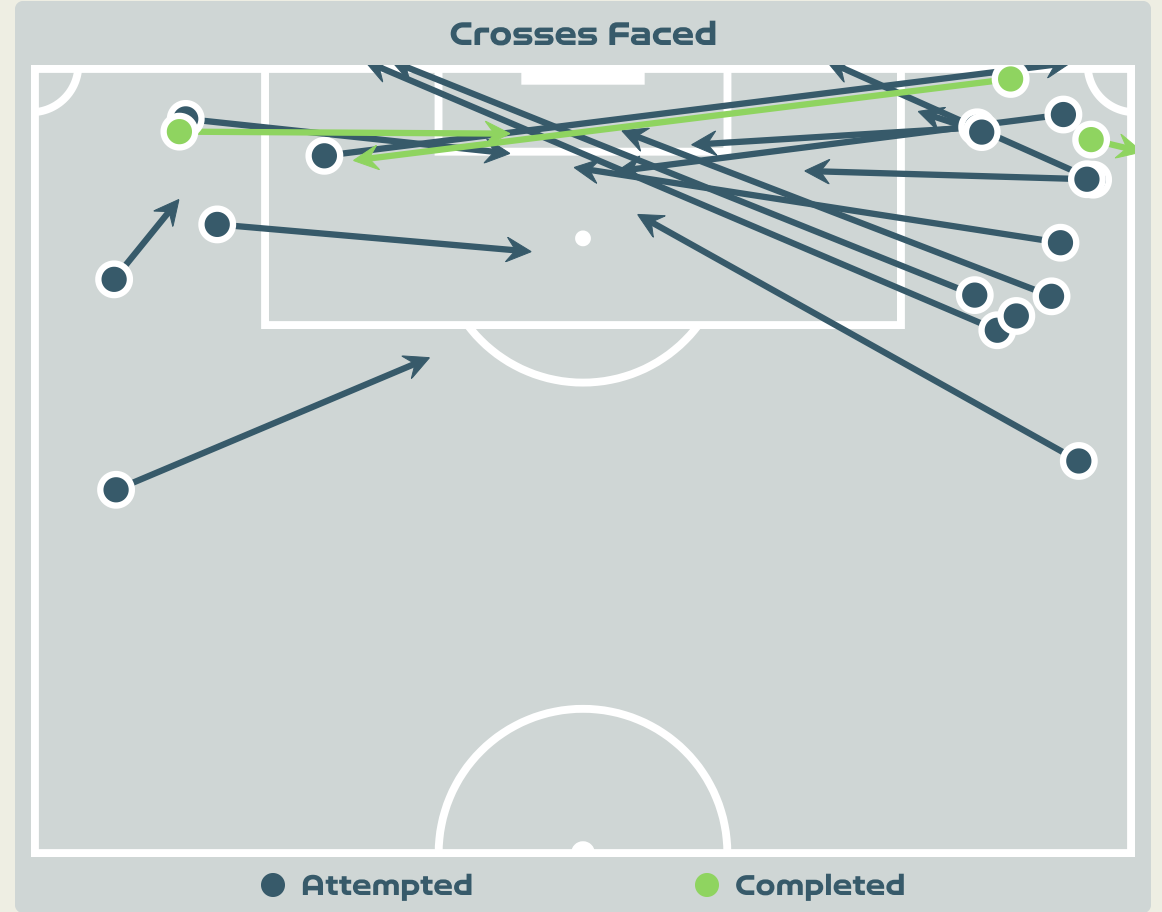
**11**  
Total Attempts on Goal Faced

**67**  
Save %

Total Attempts on Goal Faced	Total Goal Interventions	Save & Retain	Deflect & Retain	Save & Deflect	Save Attempt	No Save Attempt
11	2	2	0	0	0	9

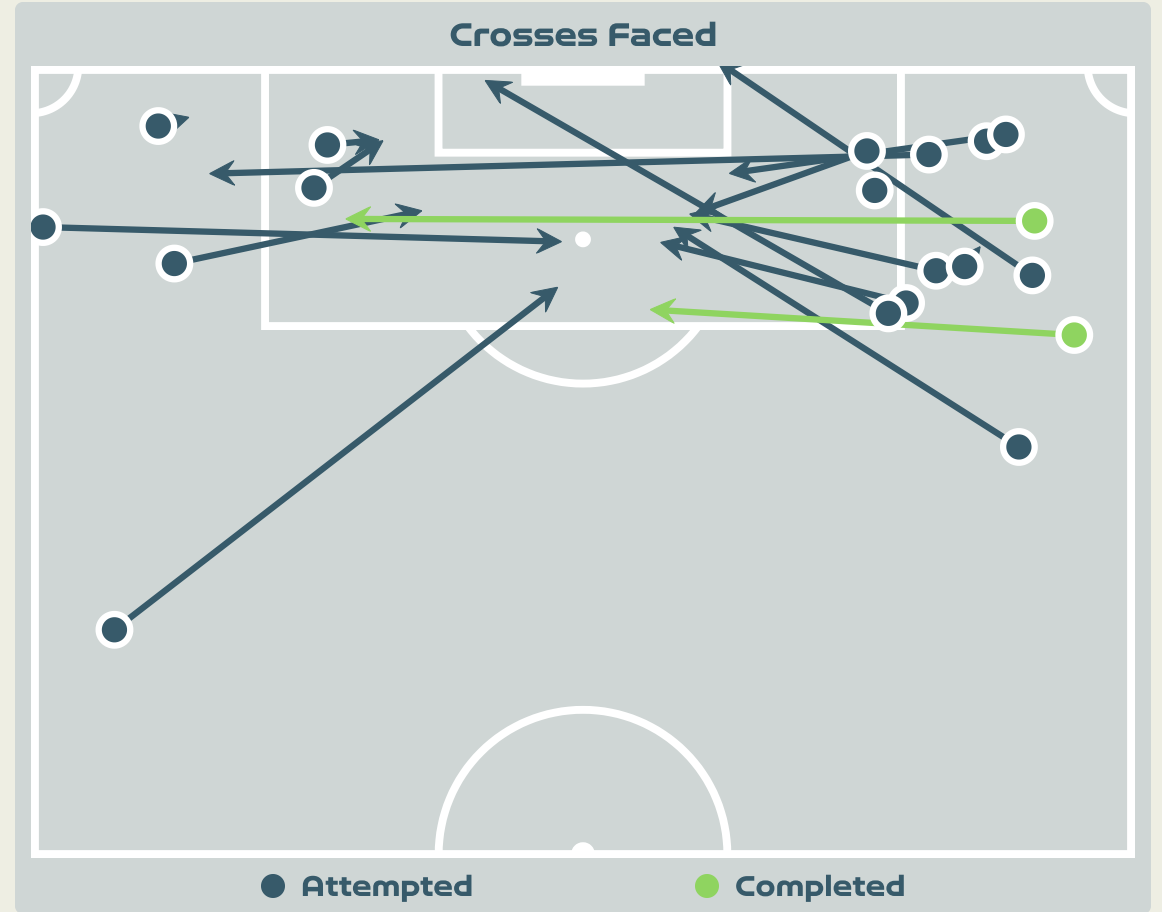
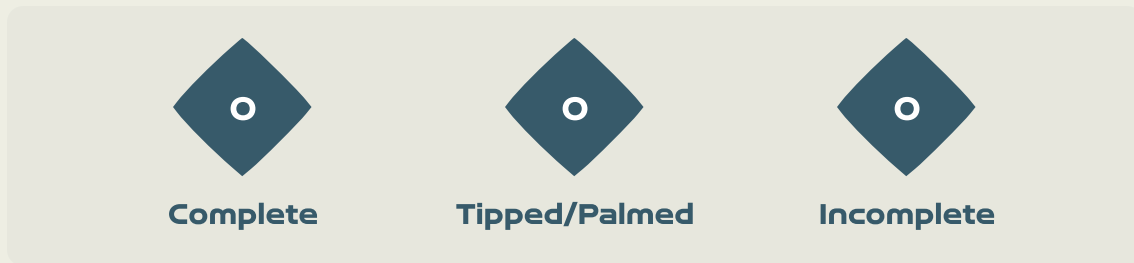
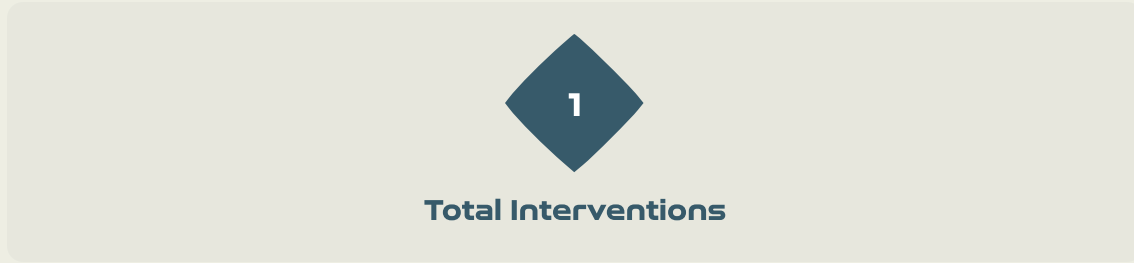


# Aerial Control



Delivery Types Faced						
Total	In Swing	Out Swing	Driven	Lofted	Cutback	Push
24	3	2	0	14	0	5

# Aerial Control



**Delivery Types Faced**

Total	In Swing	Out Swing	Driven	Lofted	Cutback	Push
27	3	7	5	7	0	5



# SET PLAYS



Haiti v Denmark





# Set Plays - Corners

54

Total Set Plays

14

Total Free Kicks

0

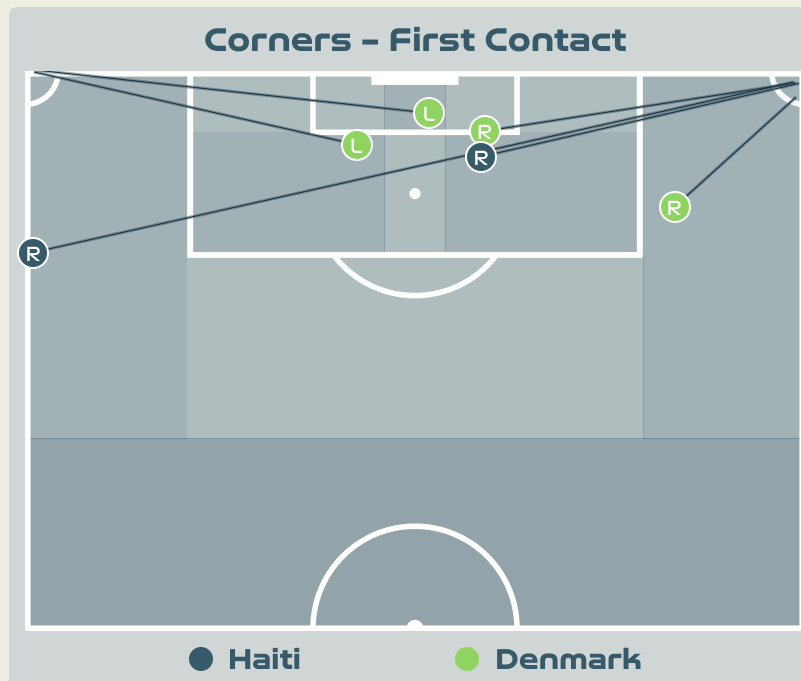
Total Penalties

7

Total Corners

33

Total Throw Ins



Delivery Type	From Left Side	From Right Side	Total
Direct to Area	3	3	6
Short	0	1	1
Edge of Penalty Area	0	0	0

Delivery Style	Total
Inswing	1
Outswing	0
Driven	2

Free Kicks	
Type	Total
Direct	11
Direct (on target)	0
Direct (off target)	0
Indirect	3

## First Contacts on Haiti Crosses

2

By Haiti

4

By Denmark

Top 5 Player First Contacts		
Player	Team	Total
JOSEPH Tabita	Haiti	1
DUMORNAY Melchie	Haiti	1
SEVECKE Rikke	Denmark	1
BOYE Simone	Denmark	1
HARDER Pernille	Denmark	1

# Set Plays - Corners

37

Total Set Plays

7

Total Free Kicks

1

Total Penalties

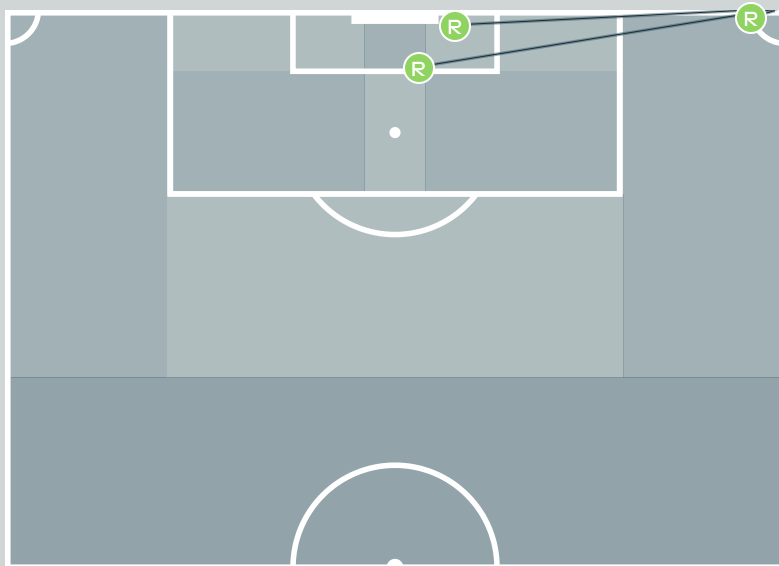
5

Total Corners

24

Total Throw Ins

## Corners - First Contact



● Denmark ● Haiti

Delivery Type	From Left Side	From Right Side	Total
Direct to Area	2	2	4
Short	0	1	1
Edge of Penalty Area	0	0	0

Delivery Style	Total
Inswing	3
Outswing	0
Driven	0

### Free Kicks

Type	Total
Direct	2
Direct (on target)	0
Direct (off target)	0
Indirect	5

## First Contacts on Denmark Crosses

0

By Denmark

3

By Haiti

### Top 5 Player First Contacts

Player	Team	Total
JOSEPH Tabita	Haiti	1
LOUIS Batcheba	Haiti	1
JEUDY Sherly	Haiti	1





# INDIVIDUAL DATA IN POSSESSION



Haiti v Denmark



Haiti



# In Possession - Distributions

#	Player	Passes Attempted	Passes Completed	Pass Completion %	Switches of Play	Crosses Attempted	Crosses Completed	Line Breaks Attempted	Line Breaks Completed	Line Break Completion %	Ball Progressions	Take Ons	Step Ins	Attempts at Goal	Goals
1	THEUS Kerly	33	18	55%	0	0	0	15	3	20%	0	0	0	0	0
2	SURPRIS Chelsea	28	14	50%	0	0	0	17	8	47%	0	0	0	0	0
4	JOSEPH Tabita	21	13	62%	0	1	1	10	4	40%	1	0	1	1	0
6	DUMORNAY Melchie	28	17	61%	1	2	0	5	1	20%	1	1	0	2	0
7	LOUIS Batcheba	13	6	46%	0	1	0	9	5	55%	3	1	2	2	0
9	JEUDY Sherly	32	24	75%	0	5	1	16	11	68%	2	2	0	1	0
10	MONDESIR Nerilia	17	13	76%	0	10	3	4	2	50%	3	3	0	3	0
11	ELOISSAINT Roseline	23	13	57%	0	3	0	8	5	62%	2	1	1	1	0
13	PETIT-FRERE Betina	14	5	36%	1	0	0	7	3	42%	0	0	0	0	0
19	PIERRE-LOUIS Dayana	17	13	76%	0	0	0	6	2	33%	0	0	0	0	0
20	LOUIS Kethna	39	22	56%	0	2	0	17	9	52%	1	1	0	0	0
21	MATHURIN Ruthny	9	7	78%	0	2	0	5	2	40%	0	0	0	0	0
22	BORGELLA Roselord	8	7	88%	0	1	0	0	0	0%	0	0	0	1	0

Haiti



# In Possession - Offers & Receptions

			Offer movement types						
#	Player	Total Offers	In Front	In Between	Out to In	In to Out	In Behind	No Movement	Offers Received
1	THEUS Kerly	1	0	0	0	0	0	1	1
2	SURPRIS Chelsea	8	0	0	0	0	0	8	4
4	JOSEPH Tabita	4	1	1	0	0	0	2	2
6	DUMORNAY Melchie	38	6	18	1	2	10	1	12
7	LOUIS Batcheba	27	0	5	4	0	12	6	4
9	JEUDY Sherly	10	8	2	0	0	0	0	3
10	MONDESIR Nerilia	38	1	4	0	1	29	3	13
11	ELOISSAINT Roseline	20	1	2	1	1	6	9	4
13	PETIT-FRERE Betina	7	2	0	0	0	0	5	1
19	PIERRE-LOUIS Dayana	6	3	3	0	0	0	0	1
20	LOUIS Kethna	12	5	0	0	0	5	2	4
21	MATHURIN Ruthny	1	0	0	0	0	0	1	0
22	BORGELLA Roselord	8	4	1	0	1	1	1	2

## In Possession - Distributions



#	Player	Passes Attempted	Passes Completed	Pass Completion %	Switches of Play	Crosses Attempted	Crosses Completed	Line Breaks Attempted	Line Breaks Completed	Line Break Completion %	Ball Progressions	Take Ons	Step Ins	Attempts at Goal	Goals
1	CHRISTENSEN Lene	33	22	67%	0	0	0	12	5	41%	0	0	0	0	0
4	SEVECKE Rikke	50	41	82%	0	0	0	17	12	70%	0	0	0	0	0
5	BOYE Simone	46	39	85%	0	0	0	17	11	64%	0	0	0	0	0
6	HOLMGAARD Karen	39	33	85%	1	0	0	13	10	76%	0	0	0	1	0
9	VANGSGAARD Amalie	26	18	69%	0	3	1	6	3	50%	1	1	0	2	0
10	HARDER Pernille	37	24	65%	1	0	0	18	10	55%	1	1	0	2	1
11	VEJE Katrine	60	51	85%	0	5	0	27	20	74%	2	0	2	0	0
12	KUHL Kathrine	38	34	89%	2	0	0	15	13	86%	4	0	4	0	0
14	SORENSEN Nicoline	18	14	78%	0	9	2	8	4	50%	2	1	1	0	0
17	MADSEN Rikke Marie	20	15	75%	0	2	0	3	1	33%	2	2	0	1	0
19	THOMSEN Janni	47	35	74%	1	5	0	21	13	61%	3	1	2	0	0
2	HASBO Josefine	5	5	100%	0	0	0	2	2	100%	0	0	0	1	0
7	TROELSGAARD Sanne	6	3	50%	0	0	0	3	1	33%	0	0	0	1	1
18	GEVITZ Luna	0	0	0%	0	0	0	0	0	0%	0	0	0	0	0
20	BRUUN Signe	9	6	67%	0	0	0	4	3	75%	1	1	0	0	0
21	GEJL Mille	17	14	82%	0	0	0	4	3	75%	1	1	0	1	0

# In Possession - Offers & Receptions



			Offer movement types						
#	Player	Total Offers	In Front	In Between	Out to In	In to Out	In Behind	No Movement	Offers Received
1	CHRISTENSEN Lene	14	0	0	0	0	0	14	2
4	SEVECKE Rikke	13	3	0	0	0	0	10	6
5	BOYE Simone	2	0	0	0	0	0	2	2
6	HOLMGAARD Karen	31	14	13	1	1	1	1	9
9	VANGSGAARD Amalie	47	0	11	0	1	31	4	12
10	HARDER Pernille	56	0	29	4	4	12	7	11
11	VEJE Katrine	13	4	0	1	0	2	6	8
12	KUHL Kathrine	77	30	40	1	1	1	4	16
14	SORENSEN Nicoline	27	0	2	1	1	20	3	5
17	MADSEN Rikke Marie	24	1	5	0	1	13	4	7
19	THOMSEN Janni	28	2	1	0	0	5	20	15
2	HASBO Josefine	8	2	6	0	0	0	0	1
7	TROELSGAARD Sanne	3	0	2	0	0	1	0	2
18	GEVITZ Luna	1	0	0	0	0	0	1	0
20	BRUUN Signe	12	0	3	0	0	9	0	2
21	GEJL Mille	11	0	1	0	2	4	4	5



# INDIVIDUAL DATA OUT OF POSSESSION



Haiti v Denmark



## Out of Possession

Haiti



#	Player	Tackles Made / Won	Blocks	Interceptions	Pressing Direct	Pressing Indirect	Duels Won - Aerial	Duels Won - Physical	Possession Contests won	Clearances	Loose Ball Receptions	Pushing On	Pushing On into Pressing	Possession Regains	Possession Interrupted
1	THEUS Kerly	0 / 0	0	0	0	0	0	0	0	2	12	0	0	16	0
2	SURPRIS Chelsea	3 / 1	1	0	3	5	4	0	4	6	5	27	4	5	3
4	JOSEPH Tabita	3 / 1	4	0	2	6	0	0	0	6	10	9	2	5	6
6	DUMORNAY Melchie	4 / 3	4	0	5	43	4	0	4	0	9	61	24	4	3
7	LOUIS Batcheba	4 / 1	2	0	6	23	4	0	4	1	3	4	3	4	3
9	JEUDY Sherly	2 / 1	4	0	6	24	0	0	1	6	17	27	12	4	8
10	MONDESIR Nerilia	0 / 0	0	0	3	14	1	0	1	0	9	11	6	0	0
11	ELOISSAINT Roseline	7 / 0	0	1	12	30	1	0	1	0	6	18	11	2	1
13	PETIT-FRERE Betina	1 / 1	4	0	3	4	0	0	0	4	6	8	3	3	4
19	PIERRE-LOUIS Dayana	4 / 0	1	2	9	6	1	0	1	2	9	20	4	4	2
20	LOUIS Kethna	11 / 2	3	1	4	14	3	0	3	11	14	9	4	9	11
21	MATHURIN Ruthny	4 / 0	2	0	2	0	0	0	0	4	0	3	1	1	2
22	BORGELLA Roselord	0 / 0	0	0	0	5	0	0	0	0	2	3	0	0	0

## Out of Possession



#	Player	Tackles Made / Won	Blocks	Interceptions	Pressing Direct	Pressing Indirect	Duels Won - Aerial	Duels Won - Physical	Possession Contests won	Clearances	Loose Ball Receptions	Pushing On	Pushing On into Pressing	Possession Regains	Possession Interrupted
1	CHRISTENSEN Lene	0 / 0	0	0	0	0	0	0	0	1	4	0	0	5	0
4	SEVECKE Rikke	2 / 2	5	1	4	0	5	0	5	10	6	4	1	11	8
5	BOYE Simone	1 / 0	5	1	0	2	1	0	2	9	8	0	0	7	6
6	HOLMGAARD Karen	4 / 2	5	1	8	14	4	1	6	8	12	8	5	7	10
9	VANGSGAARD Amalie	6 / 0	4	0	9	19	0	0	1	2	7	16	11	1	4
10	HARDER Pernille	5 / 1	1	1	7	11	3	1	6	1	10	8	3	2	5
11	VEJE Katrine	1 / 0	3	6	4	9	0	0	0	5	8	13	6	11	3
12	KUHL Kathrine	9 / 2	4	0	6	12	1	0	1	4	12	15	4	5	7
14	SORENSEN Nicoline	2 / 1	9	0	3	7	0	0	0	3	6	11	4	4	4
17	MADSEN Rikke Marie	0 / 0	1	0	3	18	1	0	3	2	5	7	5	3	2
19	THOMSEN Janni	4 / 1	0	0	3	5	1	0	2	8	8	5	1	5	4
2	HASBO Josefine	1 / 1	0	0	2	4	1	0	2	1	3	5	0	3	0
7	TROELSGAARD Sanne	1 / 1	0	0	1	2	1	0	1	1	2	1	1	1	0
18	GEVITZ Luna	0 / 0	0	0	1	0	0	0	0	0	0	1	1	0	0
20	BRUUN Signe	0 / 0	0	0	1	13	0	0	0	0	2	11	8	0	0
21	GEJL Mille	1 / 0	0	0	1	2	0	0	0	0	4	5	2	1	0





# INDIVIDUAL DATA PHYSICAL



Haiti v Denmark



## Physical Data

Haiti



#	Player	Total Distance (m)	Zone 1: 0-7 km/h (m)	Zone 2: 7-13km/h (m)	Zone 3: 13-19km/h (m)	Zone 4: 19-23km/h (m)	Zone 5: 23+ km/h (m)	High Speed Runs (Zone 4)	Sprints (Zone 5)	Top Speed (km/h)
1	THEUS Kerly	3864.8	2876.5	668.6	297.6	6.6	15.1	35.0	2.0	27.4
2	SURPRIS Chelsea	10080.0	3605.6	3938.3	2055.3	414.3	66.5	185.0	32.0	25.7
4	JOSEPH Tabita	9182.4	3863.0	2982.4	1712.5	492.2	131.3	139.0	35.0	28.5
6	DUMORNAY Melchie	11458.2	3718.2	4170.8	2613.6	653.1	302.5	220.0	62.0	32.9
7	LOUIS Batcheba	11422.5	3546.7	4362.2	2788.2	590.5	134.8	206.0	43.0	27.5
9	JEUDY Sherly	10534.2	3550.0	3453.1	2979.1	430.8	120.1	238.0	37.0	26.7
10	MONDESIR Nerilia	9571.7	3816.2	3290.7	1802.3	356.1	305.3	161.0	38.0	29.1
11	ELOISSAINT Roseline	10646.7	3545.4	3059.9	2692.6	893.3	455.7	231.0	77.0	29.5
13	PETIT-FRERE Betina	8143.6	2632.0	3457.0	1579.0	336.3	139.3	136.0	33.0	29.2
19	PIERRE-LOUIS Dayana	7826.2	2315.0	3206.4	2007.4	278.6	18.0	144.0	20.0	24.4
20	LOUIS Kethna	9381.1	4548.9	2997.3	1178.3	351.8	305.8	114.0	39.0	30.2
21	MATHURIN Ruthny	1435.4	524.1	485.4	252.5	75.1	98.3	24.0	8.0	26.6
22	BORGELLA Roselord	3242.7	1253.0	1115.8	671.2	106.4	96.3	56.0	12.0	25.9

## Physical Data



#	Player	Total Distance (m)	Zone 1: 0-7 km/h (m)	Zone 2: 7-13km/h (m)	Zone 3: 13-19km/h (m)	Zone 4: 19-23km/h (m)	Zone 5: 23+ km/h (m)	High Speed Runs (Zone 4)	Sprints (Zone 5)	Top Speed (km/h)
1	CHRISTENSEN Lene	5729.3	3703.4	1509.7	438.3	71.6	6.9	37.0	4.0	26.0
4	SEVECKE Rikke	9740.9	3808.7	3803.8	1755.3	273.7	98.4	147.0	24.0	28.1
5	BOYE Simone	9716.7	3628.2	3917.8	1795.6	316.8	59.3	151.0	27.0	27.0
6	HOLMGAARD Karen	9674.8	3078.5	3596.1	2391.6	380.2	229.3	179.0	39.0	27.1
9	VANGSGAARD Amalie	11525.6	4153.8	3647.8	2697.0	614.3	411.5	230.0	60.0	29.8
10	HARDER Pernille	10481.3	4021.7	3122.4	2582.6	599.5	155.1	211.0	45.0	26.7
11	VEJE Katrine	11919.2	3778.4	4494.7	2815.3	619.8	211.0	203.0	43.0	27.7
12	KUHL Kathrine	9973.1	2812.4	4202.7	2355.7	499.7	102.7	168.0	39.0	30.1
14	SORENSEN Nicoline	8027.5	2500.6	2971.8	1905.7	442.3	207.1	132.0	32.0	30.1
17	MADSEN Rikke Marie	8511.8	2174.8	3114.5	2279.5	688.6	254.5	179.0	51.0	29.0
19	THOMSEN Janni	11395.7	3672.8	3941.8	2831.8	684.9	264.4	218.0	52.0	28.3
2	HASBO Josefine	2390.4	646.9	841.4	803.9	98.0	0	51.0	7.0	23.5
7	TROELSGAARD Sanne	2283.9	726.1	679.2	599.3	211.7	67.4	54.0	17.0	27.0
18	GEVITZ Luna	1112.5	322.8	475.7	238.0	65.0	11.1	17.0	3.0	25.2
20	BRUUN Signe	4224.4	1189.6	1255.5	1355.6	304.2	119.5	102.0	26.0	28.3
21	GEJL Mille	4262.3	1391.7	1355.9	1136.3	251.9	126.6	80.0	24.0	28.9

