



China PR 1 - 6 England

Group D - Match 39
01 August 2023
20:30 Kick Off
Hindmarsh Stadium

POST MATCH SUMMARY REPORT

Match Summary - Teams



China PR



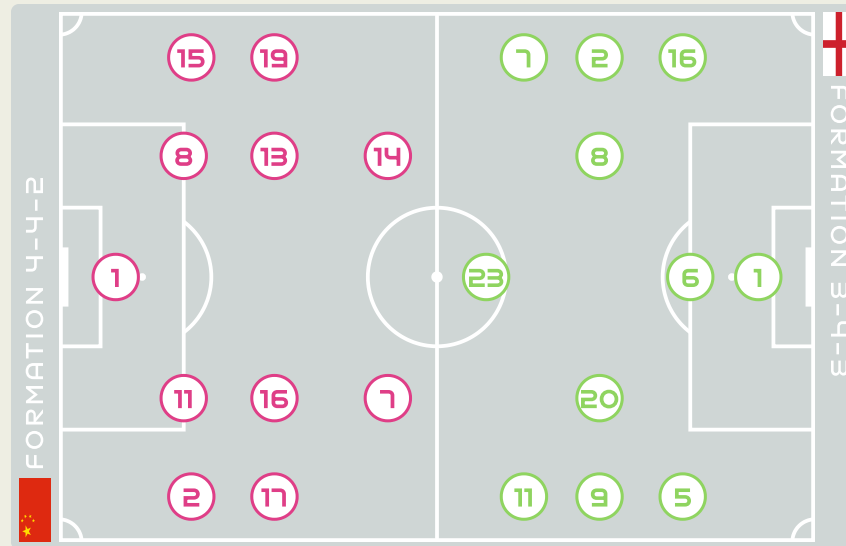
England

STARTING

1	GK	ZHU Yu	
2	DF	LI Mengwen	↓ 75'
7	FW	WANG Shuang	⚽ 51' ↓ 75'
8	DF	YAO Wei	
11	FW	WANG Shanshan (C)	
13	MF	YANG Lina	
14	FW	LOU Jiahui	↓ 90+11'
15	DF	CHEN Qiaozhu	
16	MF	YAO Lingwei	↓ 90+3'
17	MF	WU Chengshu	↓ 90+3'
19	MF	ZHANG Linyan	

SUBSTITUTES

12	GK	XU Huan	
22	GK	PAN Hongyan	
3	DF	DOU Jiaxing	↑ 90+3'
4	DF	WANG Linlin	↑ 90+11'
5	DF	WU Haiyan	↑ 75'
6	MF	ZHANG Xin	
9	MF	SHEN Mengyu	↑ 90+3'
18	FW	TANG Jiali	
20	FW	XIAO Yuyi	
21	MF	GU Yasha	↑ 75'
23	DF	GAO Chen	



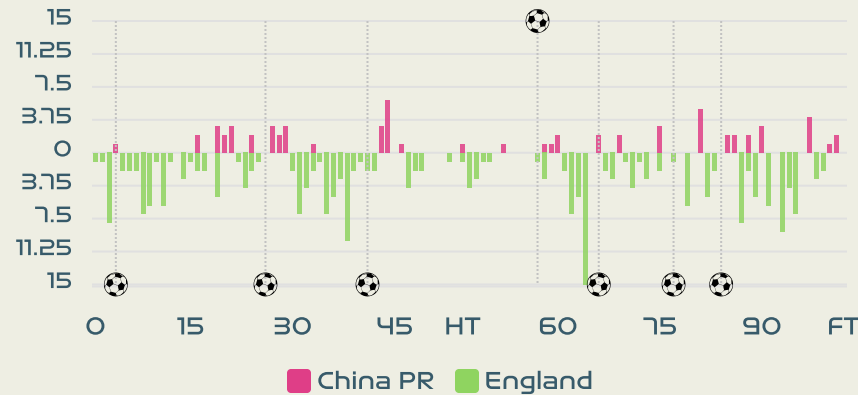
STARTING

EARPS Mary	GK	1	
BRONZE Lucy	DF	2	↓ 71' 53'
GREENWOOD Alex	DF	5	
(C) BRIGHT Millie	DF	6	
JAMES Lauren	FW	7	↓ 81' ⚽ 66' ⚽ 41'
STANWAY Georgia	MF	8	↓ 46'
DALY Rachel	FW	9	⚽ 84'
HEMP Lauren	FW	11	↓ 71' ⚽ 26'
CARTER Jessica	DF	16	
ZELEM Katie	MF	20	
RUSSO Alessia	FW	23	↓ 71' ⚽ 4'

SUBSTITUTES

HAMPTON Hannah	GK	13	
ROEBUCK Ellie	GK	21	
CHARLES Niamh	DF	3	↑ 71'
WALSH Keira	MF	4	
TOONE Ella	MF	10	↑ 81'
NOBBS Jordan	MF	12	
WUBBEN-MOY Lotte	DF	14	
MORGAN Esme	DF	15	
COOMBS Laura	MF	17	↑ 46'
KELLY Chloe	FW	18	⚽ 77' ↑ 71'
ENGLAND Beth	FW	19	↑ 71'
ROBINSON Katie	FW	22	

Distribution in the Final Third



Match Summary - Key Statistics



China PR



England



Possession

Total	20.6%	12%	67.4%	Total
1	Goals			6
7 (3)	Attempts at Goal (On Target)			17 (7)
275 (194)	Total Passes (Complete)			784 (714)
71 %	Pass Completion %			91 %
56	Completed Line Breaks			132
10	Defensive Line Breaks			10
60	Receptions in the Final Third			204
15	Crosses			21
5	Ball Progressions			17
341 (59)	Defensive Pressures Applied (Direct Pressures)			161 (52)
61	Forced Turnovers			82
74	Second Balls			96
112.9 km	Total Distance Covered			111.8 km
4.9 km	Zone 4 - Low Speed Sprinting: 19-23km/h			4.2 km



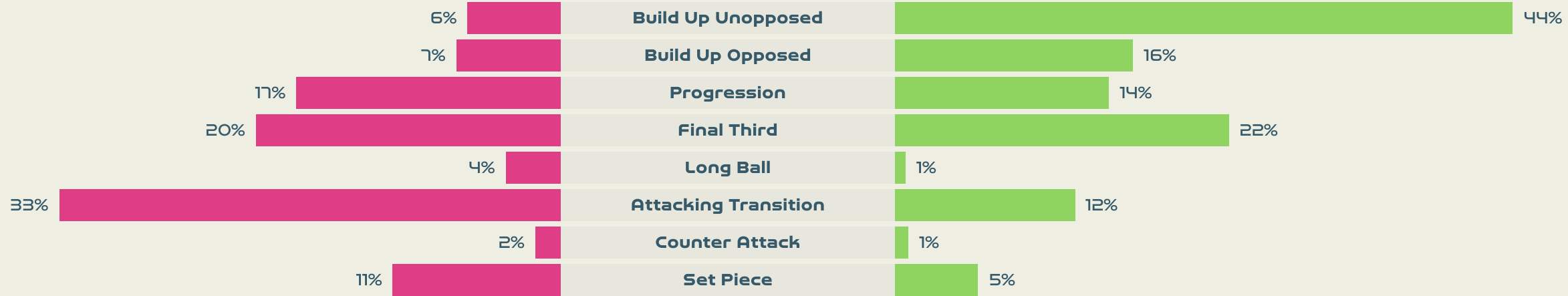
China PR

Phases of Play



England

IN POSSESSION



OUT OF POSSESSION





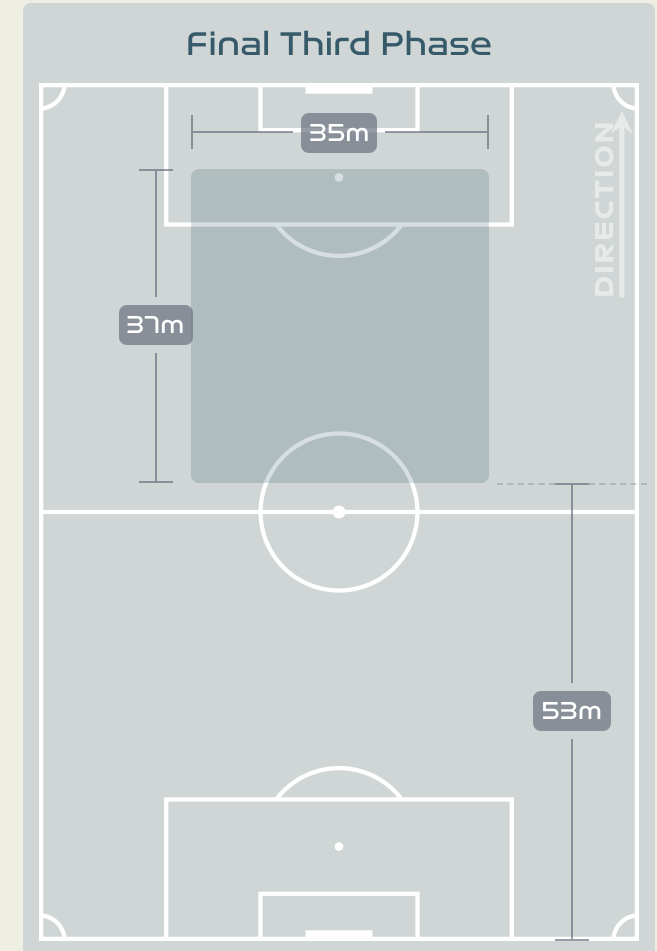
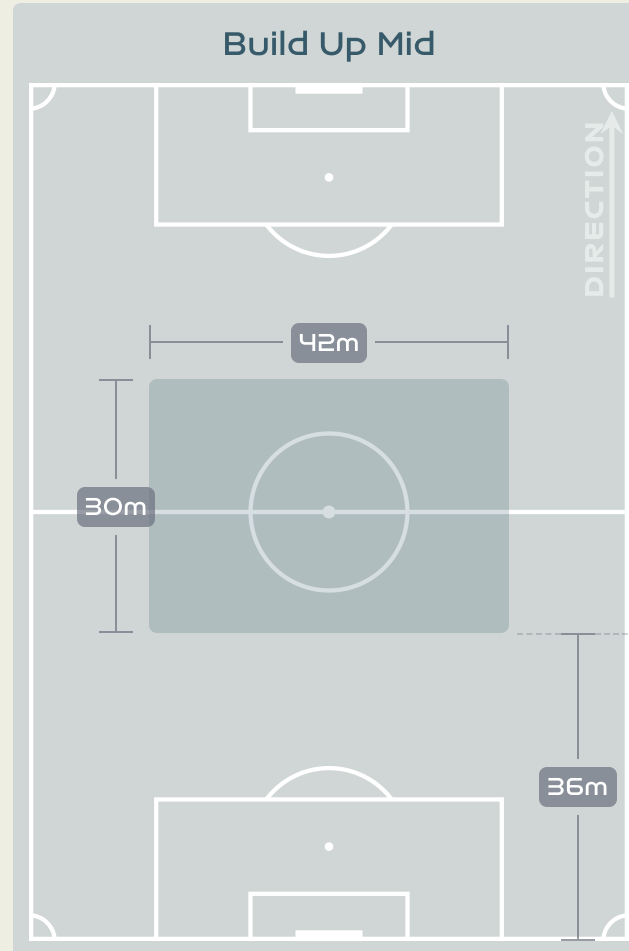
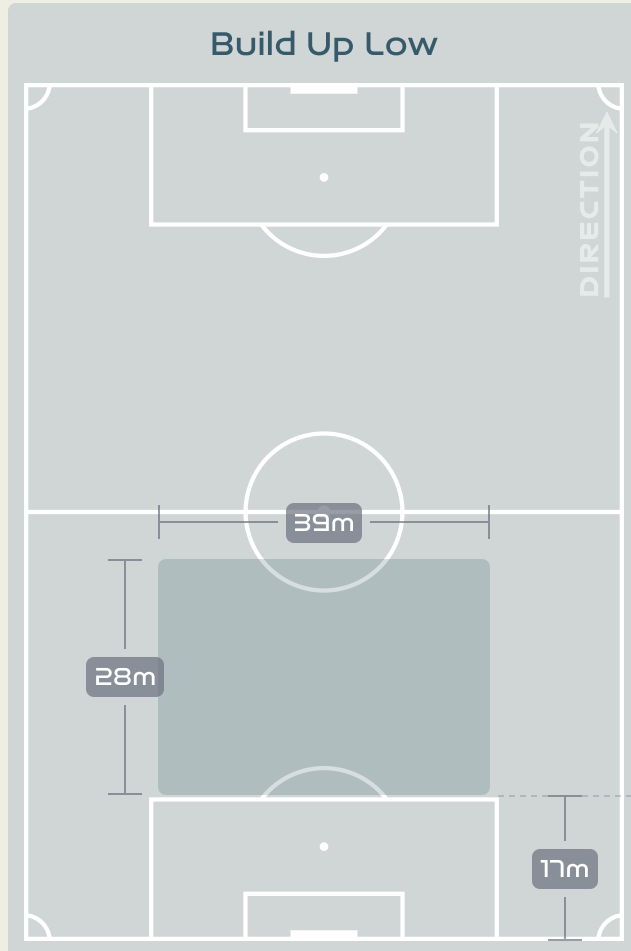
IN POSSESSION



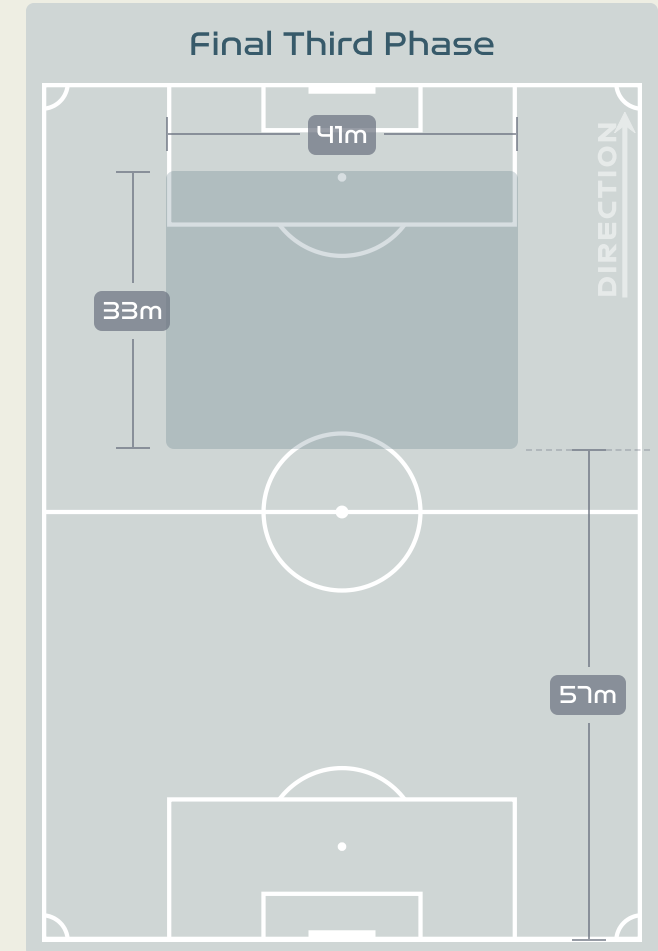
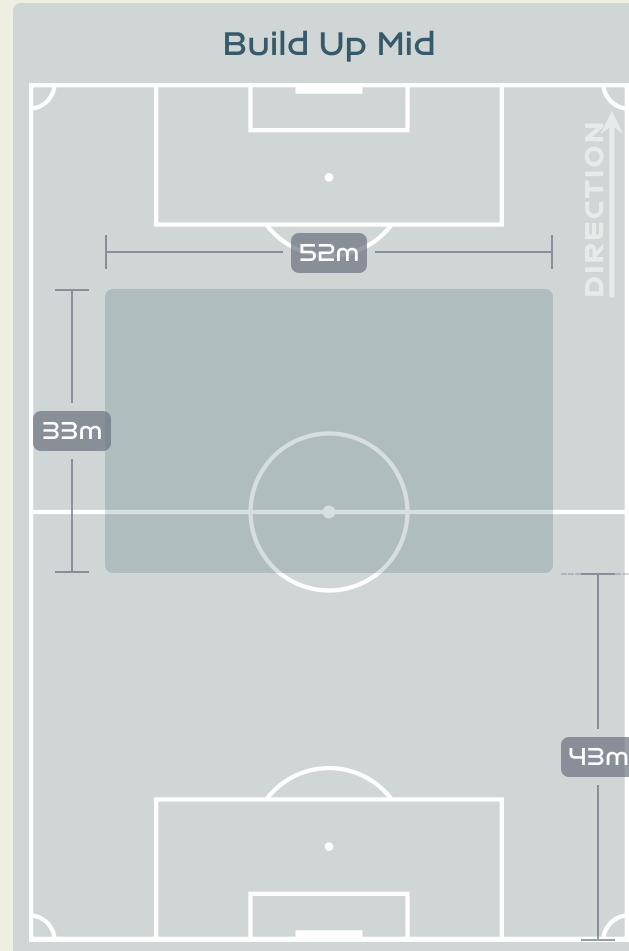
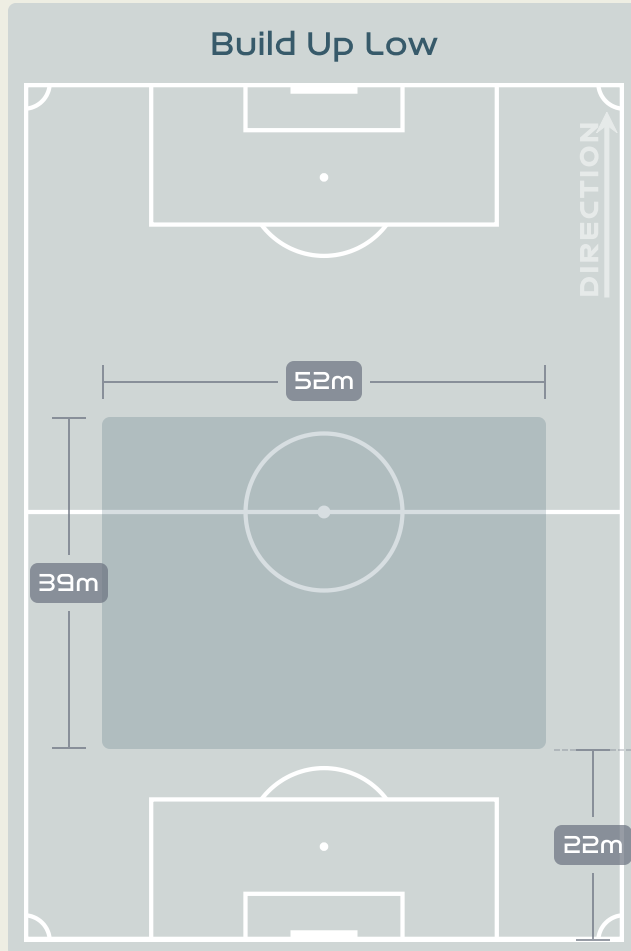
China PR v England



In Possession Line Height & Team Length



In Possession Line Height & Team Length



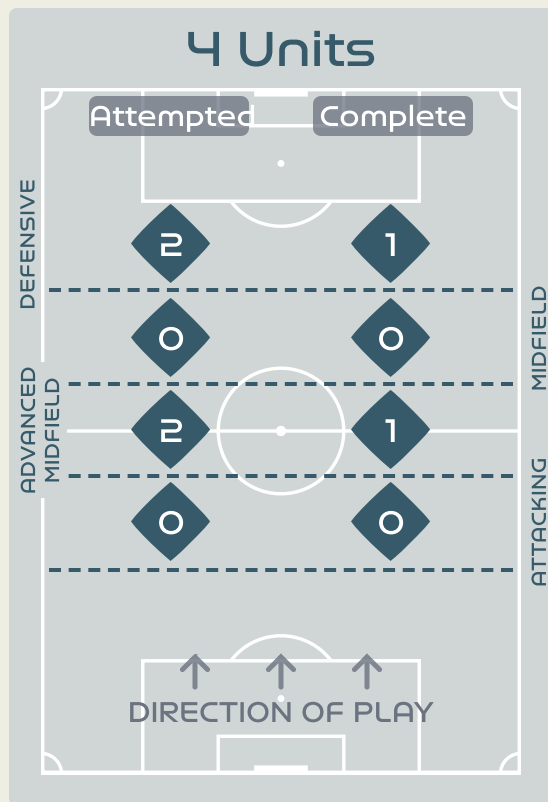
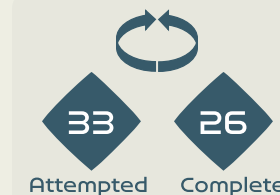
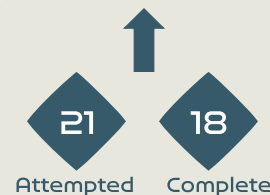
Line Breaks



China PR

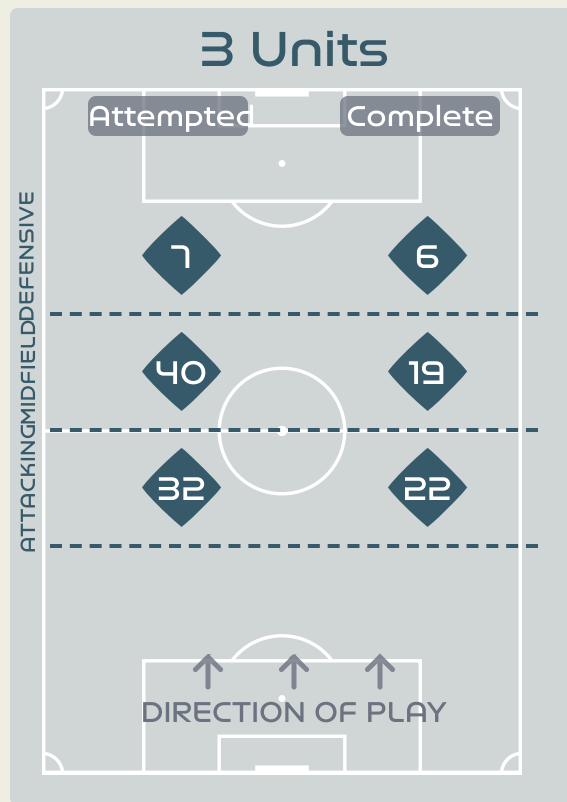
Attempted Line Breaks

100



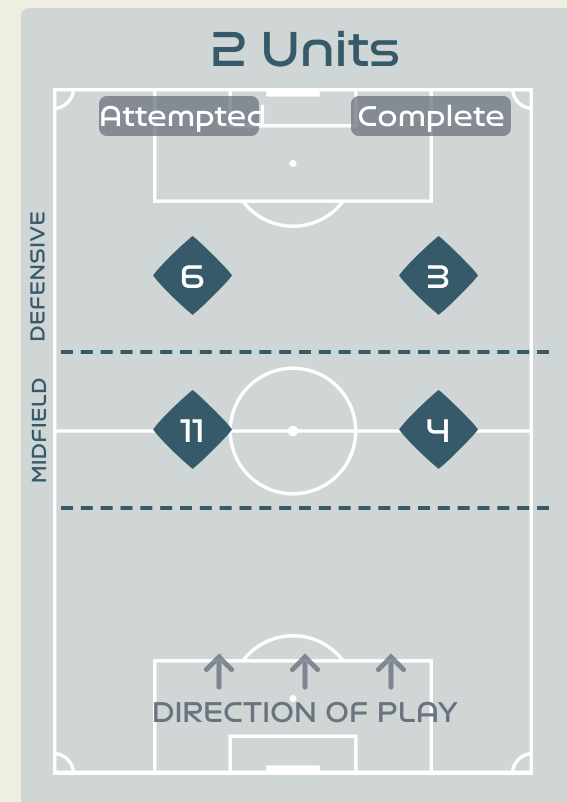
Attempted Line Breaks 4

Inside Shape 2
Outside Shape 2



Attempted Line Breaks 79

Inside Shape 51
Outside Shape 28



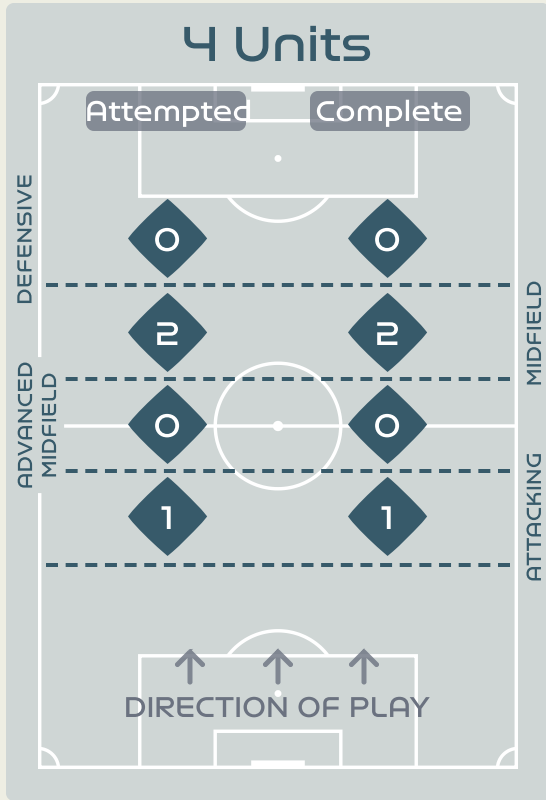
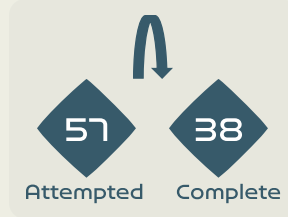
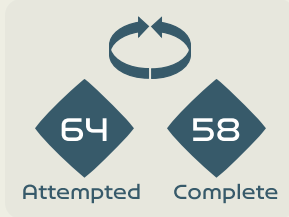
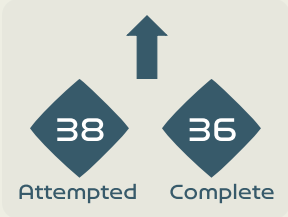
Attempted Line Breaks 17

Inside Shape 13
Outside Shape 4

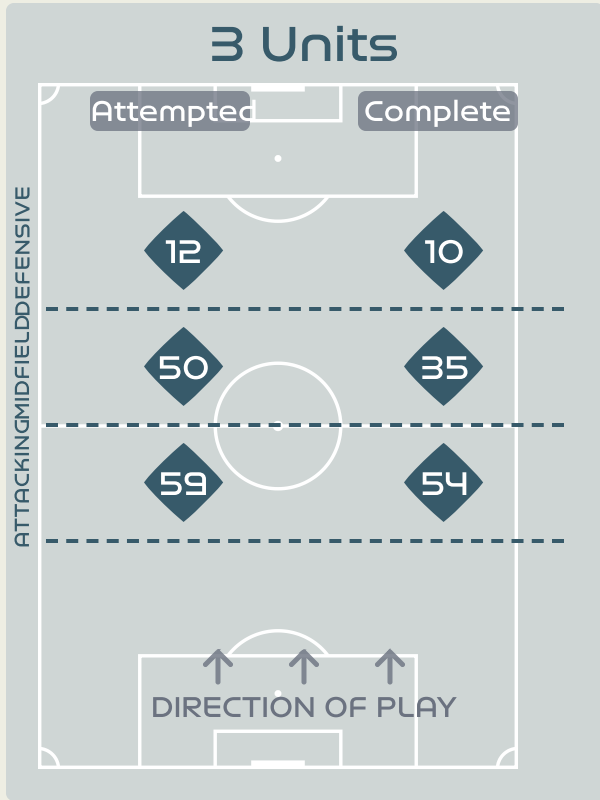
Line Breaks



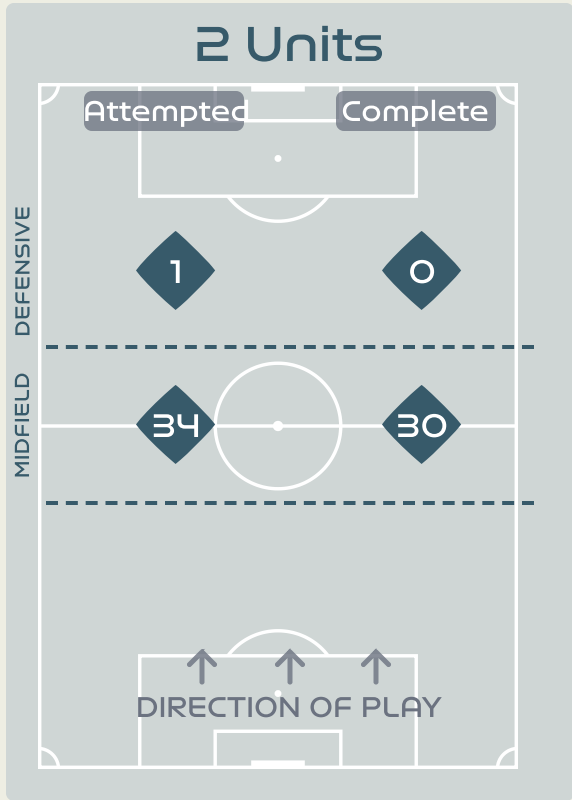
Attempted Line Breaks
159



Attempted Line Breaks **3**
 Inside Shape 0
 Outside Shape 3



Attempted Line Breaks **121**
 Inside Shape 61
 Outside Shape 60



Attempted Line Breaks **35**
 Inside Shape 18
 Outside Shape 17

Line Breaks



					4 Units				3 Units			2 Units		Direction			Distribution Type		
#	Player	Line Breaks Attempted	Line Breaks Completed	Line Break Completion %	Attacking Line	Attacking Midfield Line	Midfield Line	Defensive Line	Attacking Line	Midfield Line	Defensive Line	Midfield Line	Defensive Line	Through	Around	Over	Pass	Cross	Ball Progression
1	ZHU Yu	7	1	14%	0	0	0	0	3	2	0	2	0	0	0	7	7	0	0
2	LI Mengwen	13	10	76%	0	1	0	0	6	1	1	1	3	2	8	3	11	1	1
7	WANG Shuang	4	2	50%	0	0	0	0	0	1	1	1	1	0	2	2	3	1	0
8	YAO Wei	8	4	50%	0	0	0	0	3	5	0	0	0	0	2	6	8	0	0
11	WANG Shanshan	7	5	71%	0	0	0	0	4	2	1	0	0	1	0	6	7	0	0
13	YANG Lina	13	12	92%	0	0	0	0	6	4	1	2	0	7	5	1	13	0	0
14	LOU Jiahui	5	3	60%	0	0	0	1	0	4	0	0	0	4	0	1	5	0	0
15	CHEN Qiaozhu	23	8	34%	0	1	0	1	7	10	0	3	1	0	10	13	20	2	1
16	YAO Lingwei	4	2	50%	0	0	0	0	2	0	0	2	0	1	0	3	4	0	0
17	WU Chengshu	3	1	33%	0	0	0	0	0	2	1	0	0	2	1	0	3	0	0
19	ZHANG Linyan	6	5	83%	0	0	0	0	0	5	1	0	0	3	2	1	6	0	0
3	DOU Jiaying	0	0	0%	0	0	0	0	0	0	0	0	0	0	0	0	0	0	0
5	WU Haiyan	5	1	20%	0	0	0	0	1	2	1	0	1	0	2	3	5	0	0
9	SHEN Mengyu	0	0	0%	0	0	0	0	0	0	0	0	0	0	0	0	0	0	0
21	GU Yasha	2	2	100%	0	0	0	0	0	2	0	0	0	1	1	0	2	0	0

Line Breaks



					4 Units				3 Units			2 Units		Direction			Distribution Type		
#	Player	Line Breaks Attempted	Line Breaks Completed	Line Break Completion %	Attacking Line	Attacking Midfield Line	Midfield Line	Defensive Line	Attacking Line	Midfield Line	Defensive Line	Midfield Line	Defensive Line	Through	Around	Over	Pass	Cross	Ball Progression
1	EARPS Mary	1	1	100%	1	0	0	0	0	0	0	0	0	0	0	1	1	0	0
2	BRONZE Lucy	13	8	61%	0	0	0	0	2	8	2	0	1	6	5	2	11	1	1
5	GREENWOOD Alex	40	33	82%	0	0	2	0	22	10	0	6	0	10	14	16	39	0	1
6	BRIGHT Millie	28	25	89%	0	0	0	0	16	8	0	4	0	7	8	13	28	0	0
7	JAMES Lauren	6	5	83%	0	0	0	0	1	1	2	2	0	1	3	2	6	0	0
8	STANWAY Georgia	7	6	85%	0	0	0	0	2	2	0	3	0	1	4	2	7	0	0
9	DALY Rachel	6	4	66%	0	0	0	0	0	2	1	3	0	0	4	2	4	2	0
11	HEMP Lauren	2	2	100%	0	0	0	0	0	1	1	0	0	0	2	0	1	0	1
16	CARTER Jessica	24	20	83%	0	0	0	0	10	9	0	5	0	0	16	8	24	0	0
20	ZELEM Katie	15	13	86%	0	0	0	0	5	3	0	7	0	7	3	5	14	1	0
23	RUSSO Alessia	2	2	100%	0	0	0	0	0	0	2	0	0	0	2	0	2	0	0
3	CHARLES Niamh	6	6	100%	0	0	0	0	0	1	3	2	0	1	2	3	6	0	0
10	TOONE Ella	3	3	100%	0	0	0	0	1	1	0	1	0	3	0	0	3	0	0
17	COOMBS Laura	2	2	100%	0	0	0	0	0	2	0	0	0	0	0	2	2	0	0
18	KELLY Chloe	2	1	50%	0	0	0	0	0	1	1	0	0	1	1	0	2	0	0
19	ENGLAND Beth	2	1	50%	0	0	0	0	0	1	0	1	0	1	0	1	2	0	0

Passing Networks



#	Passes From ↓ to →	ZHU Yu	LI Mengwen	WANG Shuang	YAO Wei	WANG Shanshan	YANG Lina	LOU Jiahui	CHEN Qiaozhu	YAO Lingwei	WU Chengshu	ZHANG Linyan	DOU Jiaxing	WANG Linlin	WU Haiyan	SHEN Mengyu	GU Yasha
1	ZHU Yu		0	0	0	0	0	0	2	0	0	0	0	0	0	0	0
2	LI Mengwen	0		3	0	2	0	5	0	2	4	0	0	0	0	0	0
7	WANG Shuang	0	2		0	0	2	2	3	2	1	2	0	0	0	0	0
8	YAO Wei	0	0	1		1	3	0	2	0	0	0	0	0	0	1	2
11	WANG Shanshan	0	5	1	1		0	2	0	0	2	1	0	0	1	0	0
13	YANG Lina	0	1	6	2	1		1	8	5	0	5	0	0	0	0	1
14	LOU Jiahui	0	3	2	0	0	3		3	1	3	1	0	0	0	0	0
15	CHEN Qiaozhu	0	0	1	1	0	2	0		2	0	6	0	0	0	0	1
16	YAO Lingwei	0	2	0	3	3	3	1	2		1	1	0	0	0	0	0
17	WU Chengshu	0	5	0	0	0	0	1	0	0		1	0	0	0	0	1
19	ZHANG Linyan	0	1	1	0	0	3	3	6	2	2		0	0	3	0	0
3	DOU Jiaxing	0	0	0	0	0	0	0	0	0	0	0		0	0	0	0
4	WANG Linlin	0	0	0	0	0	0	0	0	0	0	0	0		0	0	0
5	WU Haiyan	0	0	0	0	0	0	0	0	1	0	1	0	0		0	0
9	SHEN Mengyu	0	0	0	0	0	0	0	1	0	0	1	0	0	0		0
21	GU Yasha	0	0	0	0	0	0	1	1	0	1	0	0	0	0	1	

Top 5 Player to Player Passers		
Player	Passed To	% of Total Team Passes
YANG Lina	CHEN Qiaozhu	4.8%
YANG Lina	WANG Shuang	3.6%
CHEN Qiaozhu	ZHANG Linyan	3.6%
ZHANG Linyan	CHEN Qiaozhu	3.6%

LI Mengwen	LOU Jiahui	3%
------------	------------	----

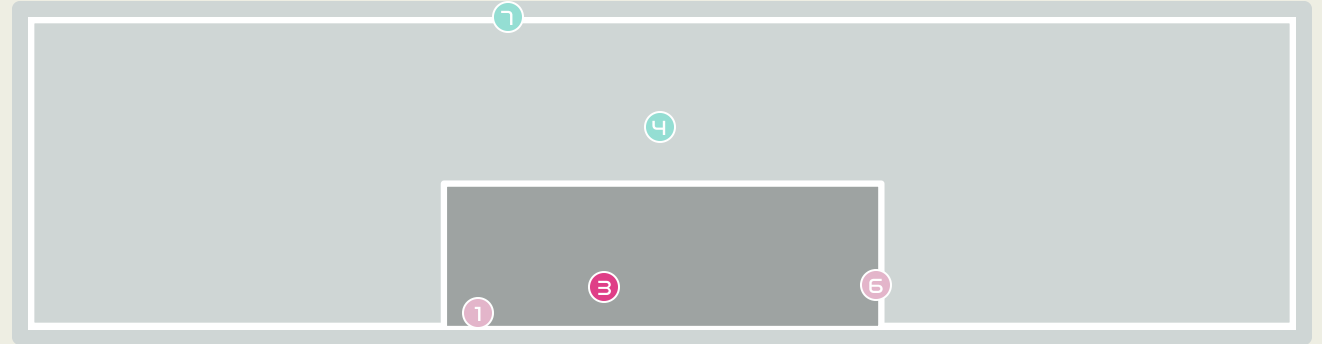
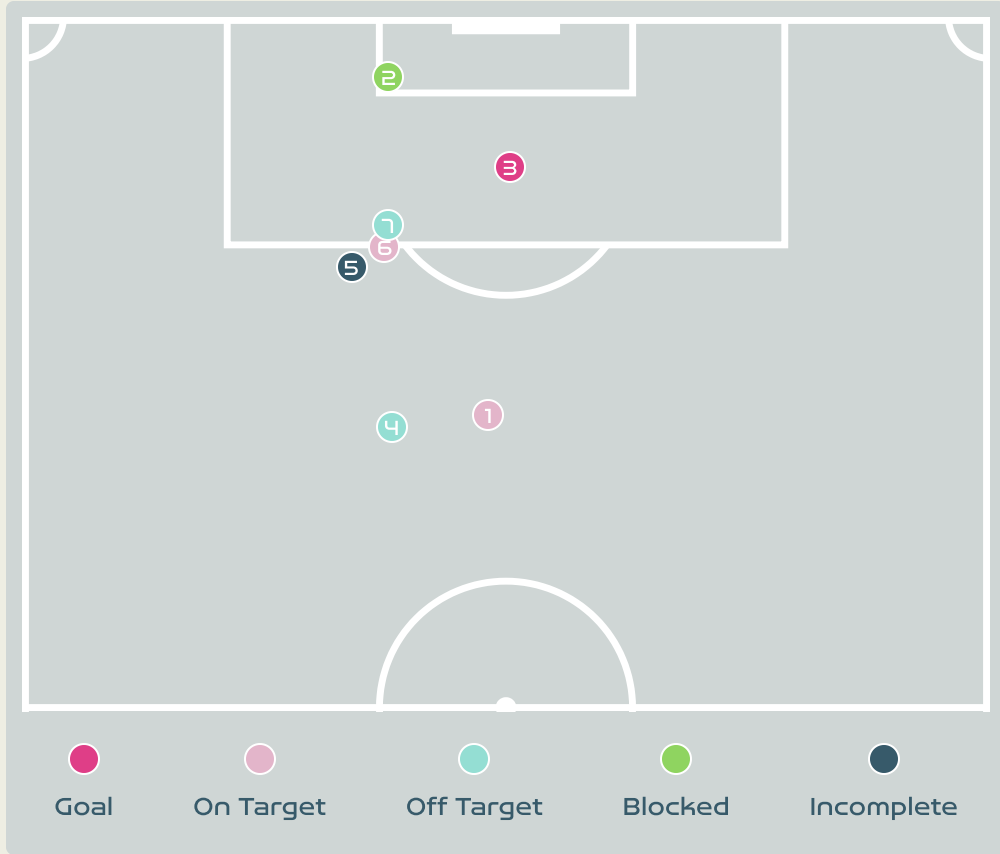
Passing Networks








#	Passes From ↓ to →	EARPS Mary	BRONZE Lucy	GREENWOOD Alex	BRIGHT Millie	JAMES Lauren	STANWAY Georgia	DALY Rachel	HEMP Lauren	CARTER Jessica	ZELEM Katie	RUSSO Alessia	CHARLES Niamh	TOONE Ella	COOMBS Laura	KELLY Chloe	ENGLAND Beth
1	EARPS Mary		1	14	4	0	0	1	0	5	0	0	0	0	0	0	0
2	BRONZE Lucy	2		1	4	1	7	0	1	17	2	4	0	0	3	0	0
5	GREENWOOD Alex	5	4		48	14	3	16	2	6	18	2	2	2	4	0	2
6	BRIGHT Millie	5	4	62		4	7	4	1	33	10	0	3	3	2	1	0
7	JAMES Lauren	0	1	10	3		0	9	1	5	5	1	0	0	0	2	0
8	STANWAY Georgia	0	8	2	4	1		2	1	3	3	1	0	0	0	0	0
9	DALY Rachel	0	1	14	4	9	1		1	1	3	2	0	0	2	0	0
11	HEMP Lauren	0	2	0	0	4	0	0		0	2	2	0	0	0	0	0
16	CARTER Jessica	5	20	7	47	1	7	0	1		5	1	4	0	2	1	1
20	ZELEM Katie	1	4	16	9	6	1	9	1	13		2	0	3	1	1	0
23	RUSSO Alessia	0	4	0	0	0	0	2	2	1	2		0	0	0	0	0
3	CHARLES Niamh	0	0	0	2	0	0	0	0	2	3	0		2	1	3	2
10	TOONE Ella	0	0	1	2	0	0	0	0	2	3	0	4		1	1	1
17	COOMBS Laura	0	2	3	3	0	0	1	1	3	2	0	0	0		0	0
18	KELLY Chloe	0	0	0	0	0	0	1	0	0	0	0	1	3	1		0
19	ENGLAND Beth	0	0	0	0	0	0	0	0	0	1	0	3	1	2	2	

Top 5 Player to Player Passers		
Player	Passed To	% of Total Team Passes
BRIGHT Millie	GREENWOOD Alex	9.1%
GREENWOOD Alex	BRIGHT Millie	7%
CARTER Jessica	BRIGHT Millie	6.9%
BRIGHT Millie	CARTER Jessica	4.8%
CARTER Jessica	BRONZE Lucy	2.9%

Attempts at Goal



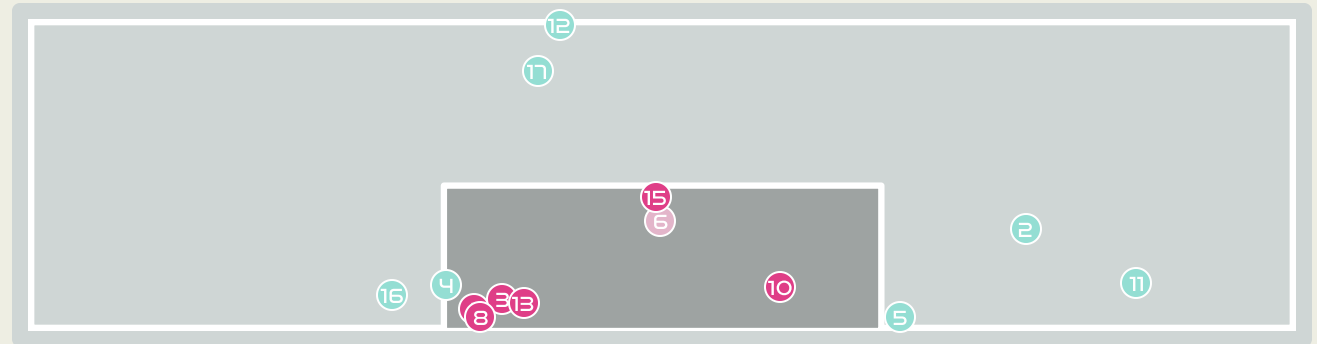
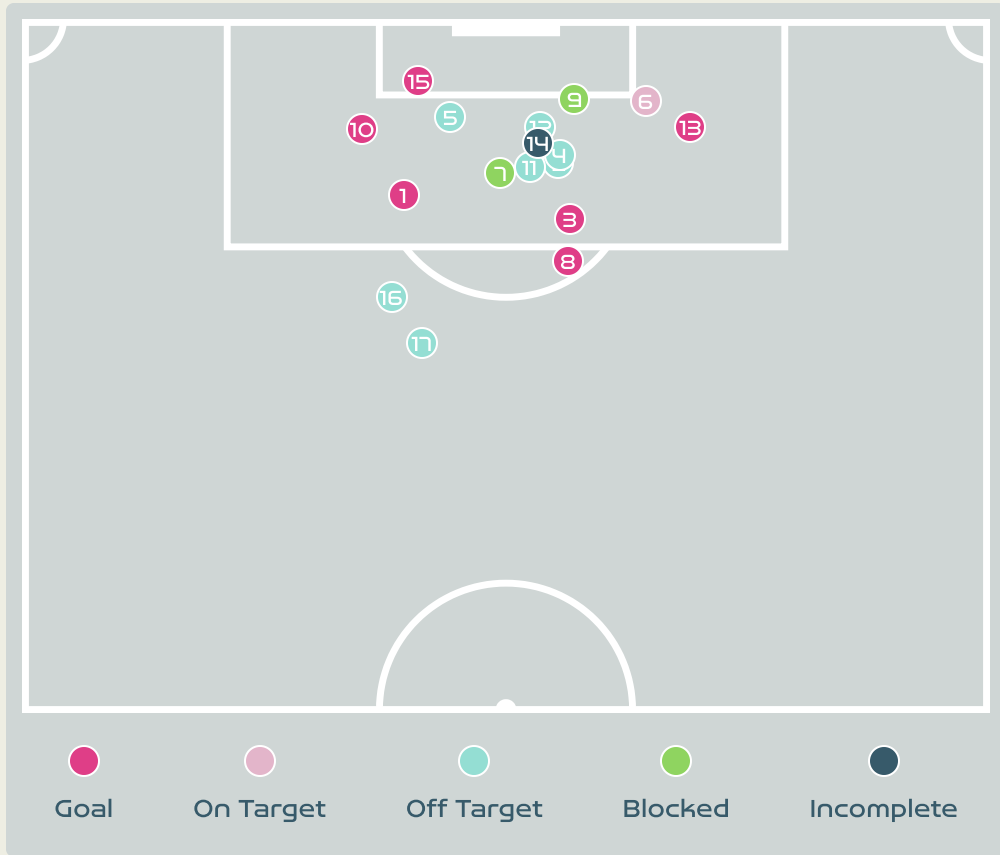
Key	Outcome	Shots
	Goals	1
	On Target	2
	Off Target	2
	Blocked	1
	Incomplete	1






Attempts at Goal

China PR

Time	Player	Outcome	Body Part	Delivery Type
52	17 WU Chengshu	On Target - Saved	Right Foot	Pass
52	13 YANG Lina	Incomplete - Blocked	Right Foot	Corner
56	7 WANG Shuang	On Target - Goal	Left Foot	Penalty
60	13 YANG Lina	Off Target	Right Foot	Loose Ball
81	13 YANG Lina	Incomplete - Referee Event	Left Foot	Loose Ball
86	15 CHEN Qiaozhu	On Target - Saved	Right Foot	Tackle
97	9 SHEN Mengyu	Off Target	Right Foot	Pass

Attempts at Goal



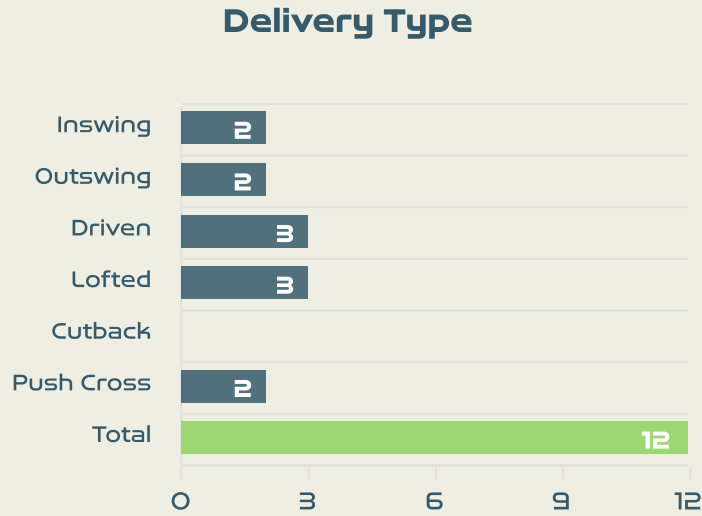
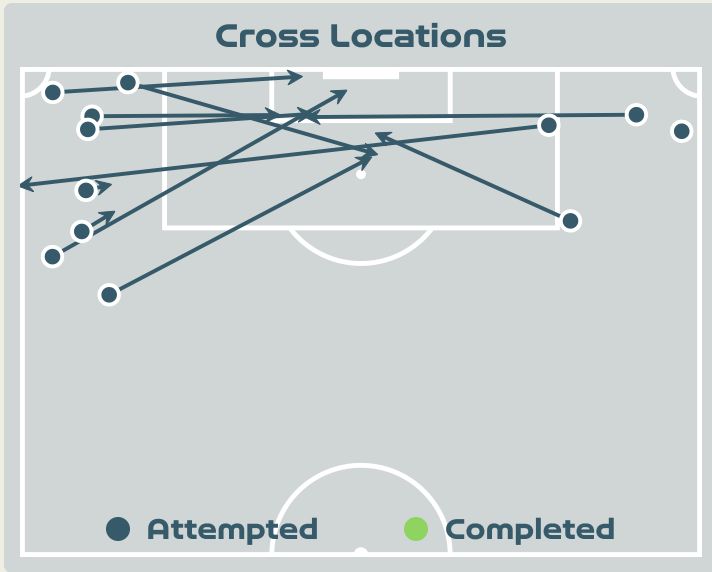
Key	Outcome	Shots
	Goals	6
	On Target	1
	Off Target	7
	Blocked	2
	Incomplete	1

Attempts at Goal

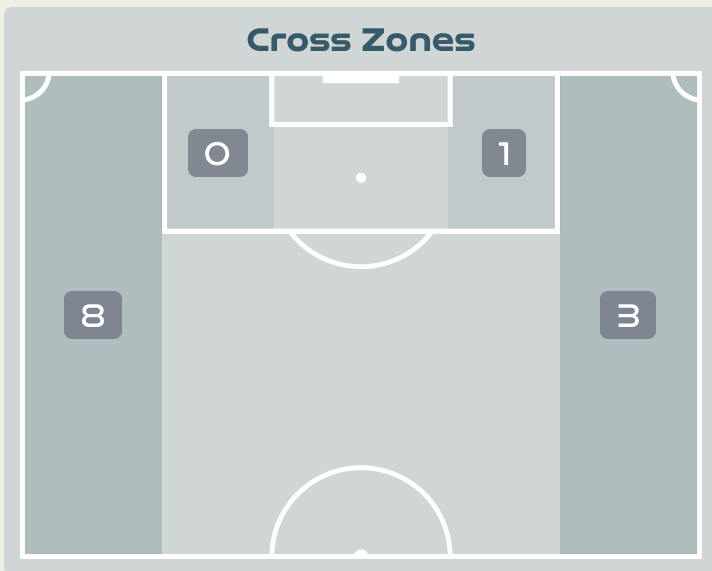


Time	Player	Outcome	Body Part	Delivery Type
3	23RUSSO Alessia	On Target - Goal	Right Foot	Pass
12	11 HEMP Lauren	Off Target	Right Foot	Pass
25	11 HEMP Lauren	On Target - Goal	Left Foot	Ball Progression
32	2 BRONZE Lucy	Off Target	Head	Cross
32	2 BRONZE Lucy	Off Target	Left Foot	Other
35	8 STANWAY Georgia	On Target - Saved	Head	Cross
36	23RUSSO Alessia	Incomplete - Blocked	Right Foot	Pass
40	7 JAMES Lauren	On Target - Goal	Right Foot	Freekick
47	11 HEMP Lauren	Incomplete - Blocked	Left Foot	Cross
65	7 JAMES Lauren	On Target - Goal	Left Foot	Pass
71	18 KELLY Chloe	Deflected Off Target - Defensive Event	Right Foot	Pass
72	9 DALY Rachel	Off Target	Head	Corner
76	18 KELLY Chloe	On Target - Goal	Right Foot	Pass
83	17 COOMBS Laura	Incomplete - Assist	Right Foot	Loose Ball
83	9 DALY Rachel	On Target - Goal	Right Foot	Loose Ball
95	17 COOMBS Laura	Off Target	Right Foot	Pass
99	17 COOMBS Laura	Off Target	Right Foot	Pass

Crosses (Open Play)



#	Player	Inswing	Outswing	Driven	Lofted	Cutback	Push Cross	Total Attempted
1	ZHU Yu	0	0	0	0	0	0	0
2	LI Mengwen	0	0	2	0	0	0	2
7	WANG Shuang	1	0	0	0	0	0	1
8	YAO Wei	0	0	0	0	0	0	0
11	WANG Shanshan	0	0	0	0	0	0	0
13	YANG Lina	0	0	0	0	0	0	0
14	LOU Jiahui	0	0	0	0	0	0	0
15	CHEN Qiaozhu	1	1	0	1	0	1	4
16	YAO Lingwei	0	0	0	0	0	0	0
17	WU Chengshu	0	0	0	0	0	0	0
19	ZHANG Linyan	0	0	1	1	0	0	2
3	DOU Jiaying	0	0	0	0	0	0	0
5	WU Haiyan	0	0	0	0	0	0	0
9	SHEN Mengyu	0	0	0	0	0	0	0
21	GU Yasha	0	1	0	1	0	1	3



Attempted

12

Completed

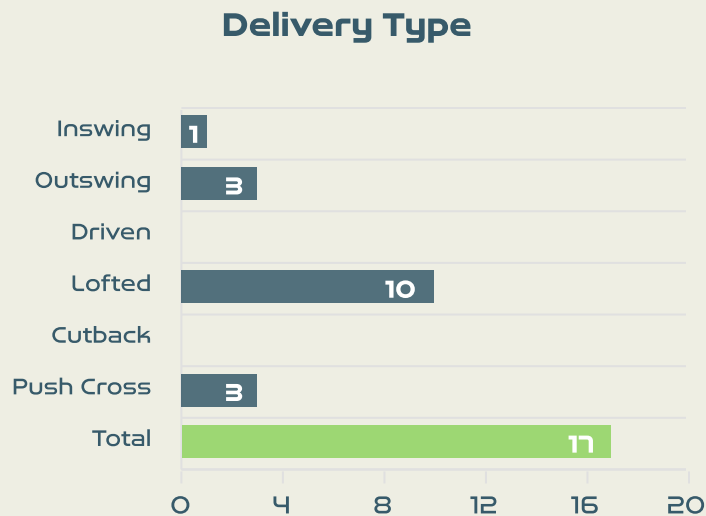
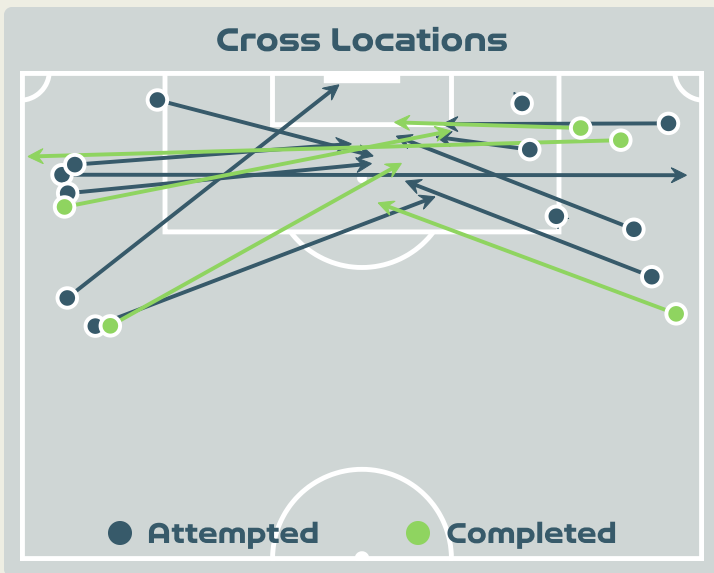
0

Most Crosses Attempted

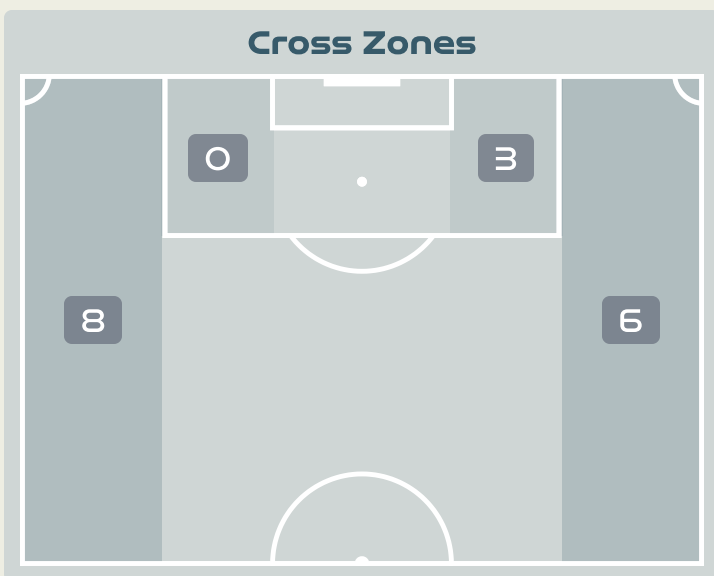
4

CHEN Qiaozhu
LEFT BACK

Crosses (Open Play)



#	Player	Inswing	Outswing	Driven	Lofted	Cutback	Push Cross	Total Attempted
1	EARPS Mary	0	0	0	0	0	0	0
2	BRONZE Lucy	0	1	0	0	0	0	1
5	GREENWOOD Alex	0	0	0	0	0	0	0
6	BRIGHT Millie	0	0	0	0	0	0	0
7	JAMES Lauren	0	0	0	2	0	0	2
8	STANWAY Georgia	0	0	0	1	0	1	2
9	DALY Rachel	1	0	0	2	0	0	3
11	HEMP Lauren	0	2	0	0	0	0	2
16	CARTER Jessica	0	0	0	0	0	0	0
20	ZELEM Katie	0	0	0	1	0	0	1
23	RUSSO Alessia	0	0	0	2	0	1	3
3	CHARLES Niamh	0	0	0	1	0	0	1
10	TOONE Ella	0	0	0	1	0	0	1
17	COOMBS Laura	0	0	0	0	0	0	0
18	KELLY Chloe	0	0	0	0	0	1	1
19	ENGLAND Beth	0	0	0	0	0	0	0



Attempted

17

Completed

5

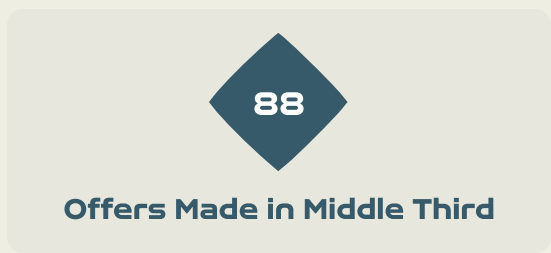
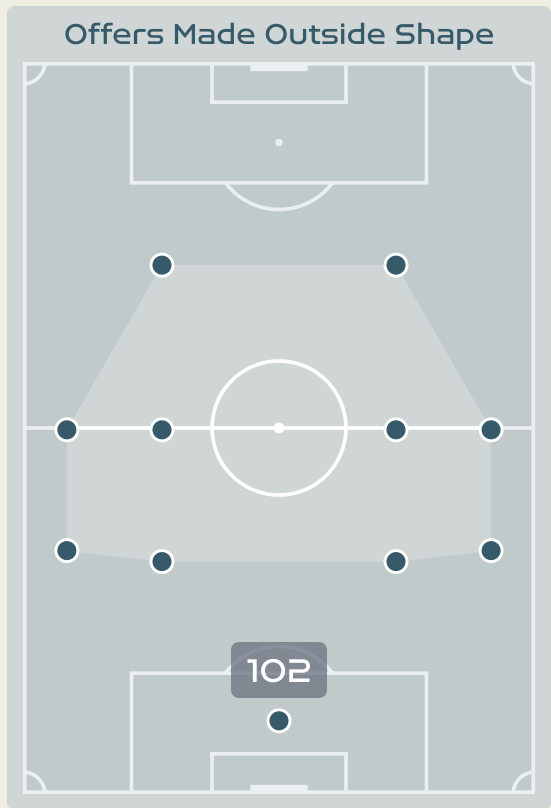
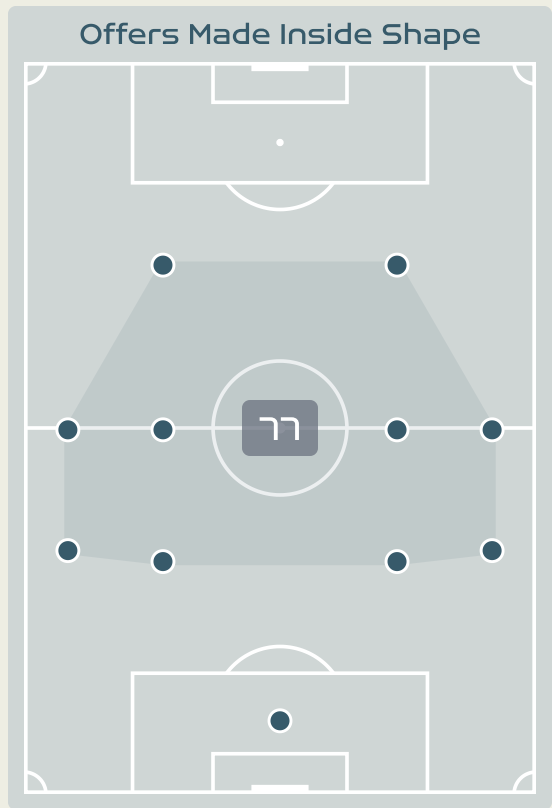
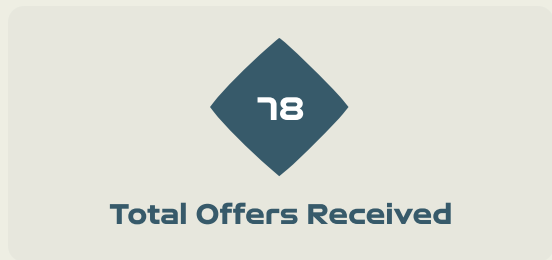
Most Crosses Attempted

3

DALY Rachel
LEFT MIDFIELD



Offering to Receive



#	Player	Offers Made	Offers Received	% Made & Received
1	ZHU Yu	0	0	0%
2	LI Mengwen	9	5	55.6%
7	WANG Shuang	25	9	36%
8	YAO Wei	4	1	25%
11	WANG Shanshan	3	2	66.7%
13	YANG Lina	10	5	50%
14	LOU Jiahui	27	12	44.4%
15	CHEN Qiaozhu	16	7	43.8%
16	YAO Lingwei	7	1	14.3%
17	WU Chengshu	16	9	56.2%
19	ZHANG Linyan	45	18	40%
3	DOU Jiaxing	0	0	0%
5	WU Haiyan	6	3	50%
9	SHEN Mengyu	2	1	50%
21	GU Yasha	9	5	55.6%



Offering to Receive

108
Total Offers Made

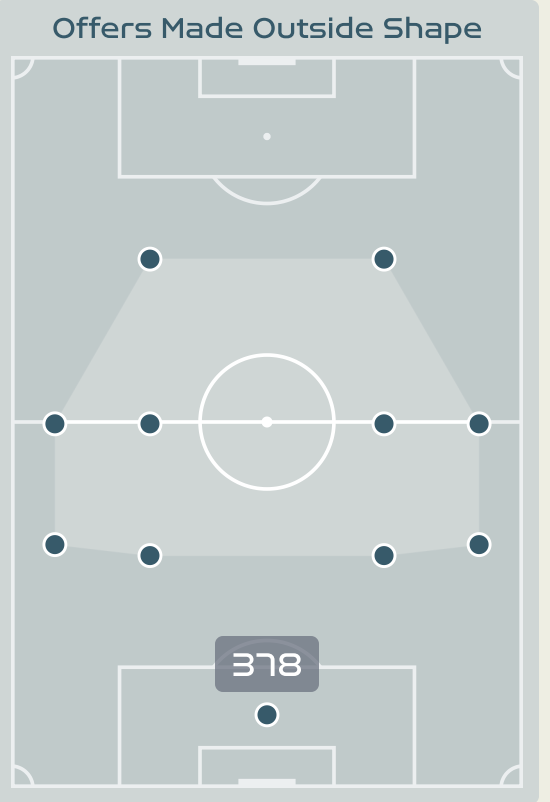
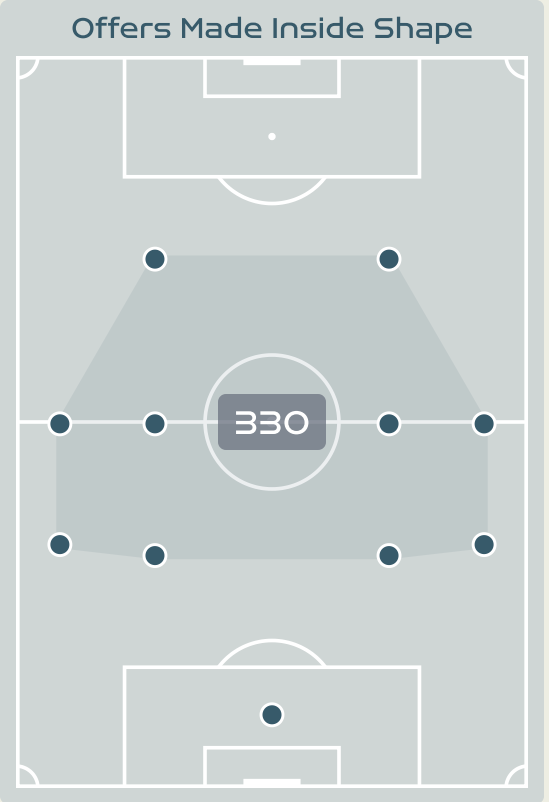
276
Total Offers Received

Most Offers
95
GREENWOOD Alex
LEFT BACK

260
Offers Made in Final Third

373
Offers Made in Middle Third

75
Offers Made in Defensive Third

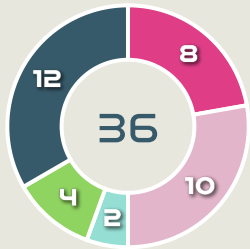


#	Player	Offers Made	Offers Received	% Made & Received
1	EARPS Mary	12	6	50%
2	BRONZE Lucy	46	20	43.5%
5	GREENWOOD Alex	95	61	64.2%
6	BRIGHT Millie	43	14	32.6%
7	JAMES Lauren	69	23	33.3%
8	STANWAY Georgia	63	24	38.1%
9	DALY Rachel	57	18	31.6%
11	HEMP Lauren	25	7	28%
16	CARTER Jessica	34	19	55.9%
20	ZELEM Katie	77	34	44.2%
23	RUSSO Alessia	19	5	26.3%
3	CHARLES Niamh	30	9	30%
10	TOONE Ella	36	11	30.6%
17	COOMBS Laura	57	14	24.6%
18	KELLY Chloe	22	5	22.7%
19	ENGLAND Beth	23	6	26.1%

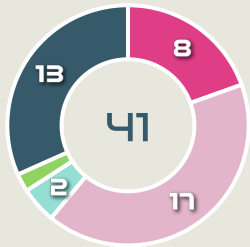
Movement to Receive

Movement Types by Phase

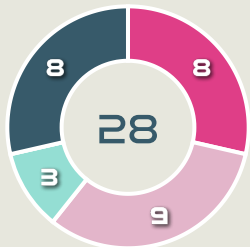
Final Third Phase



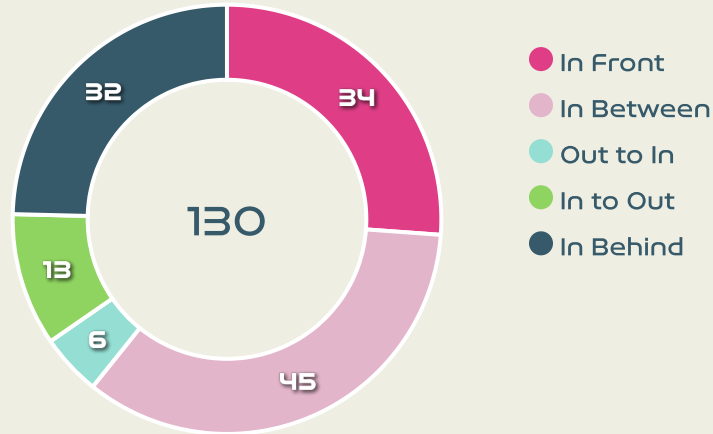
Progression Phase



Build Up Phase



All Movement Types

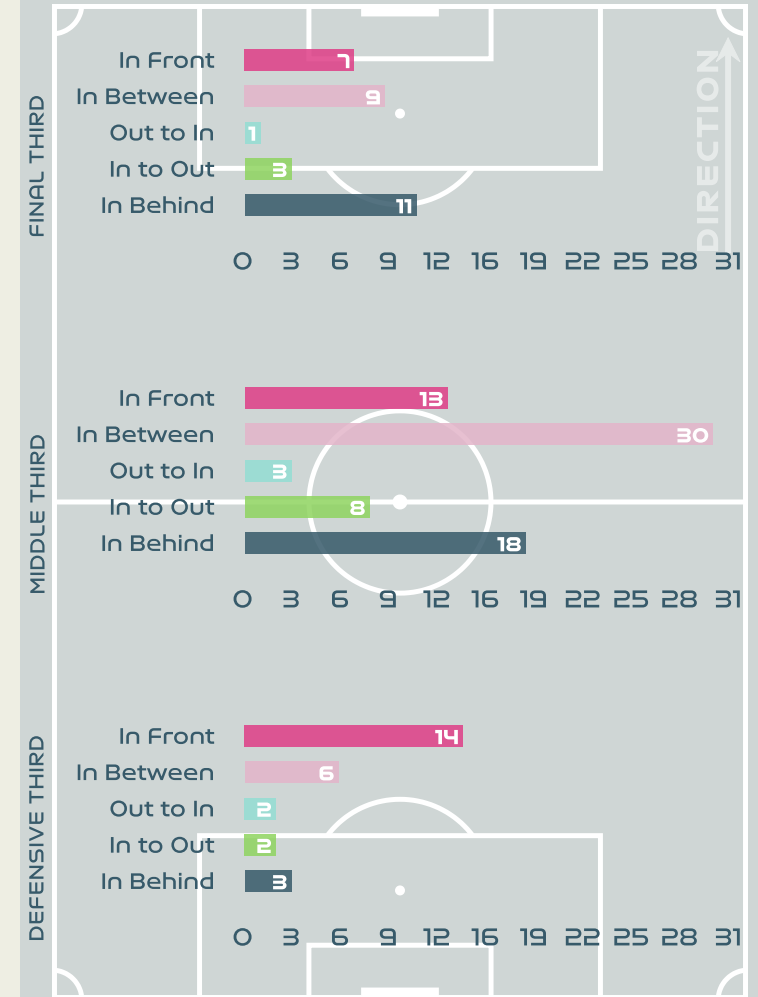


- In Front
- In Between
- Out to In
- In to Out
- In Behind

Top Ranked Players

Type	Player	Movements
In Front	19 ZHANG Linyan	6
In Between	14 LOU Jiahui	16
Out to In	7 WANG Shuang	3
In to Out	19 ZHANG Linyan	6
In Behind	19 ZHANG Linyan	11

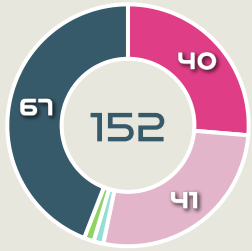
Movement Types Pitch Third



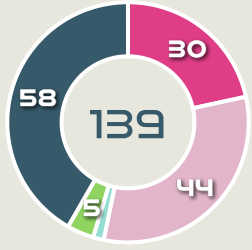
Movement to Receive

Movement Types by Phase

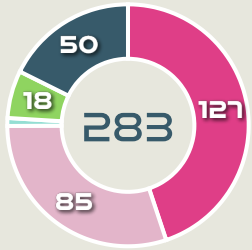
Final Third Phase



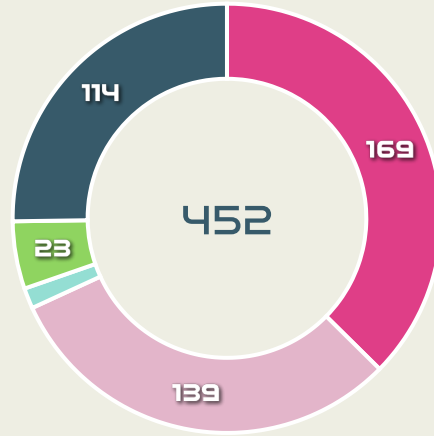
Progression Phase



Build Up Phase



All Movement Types

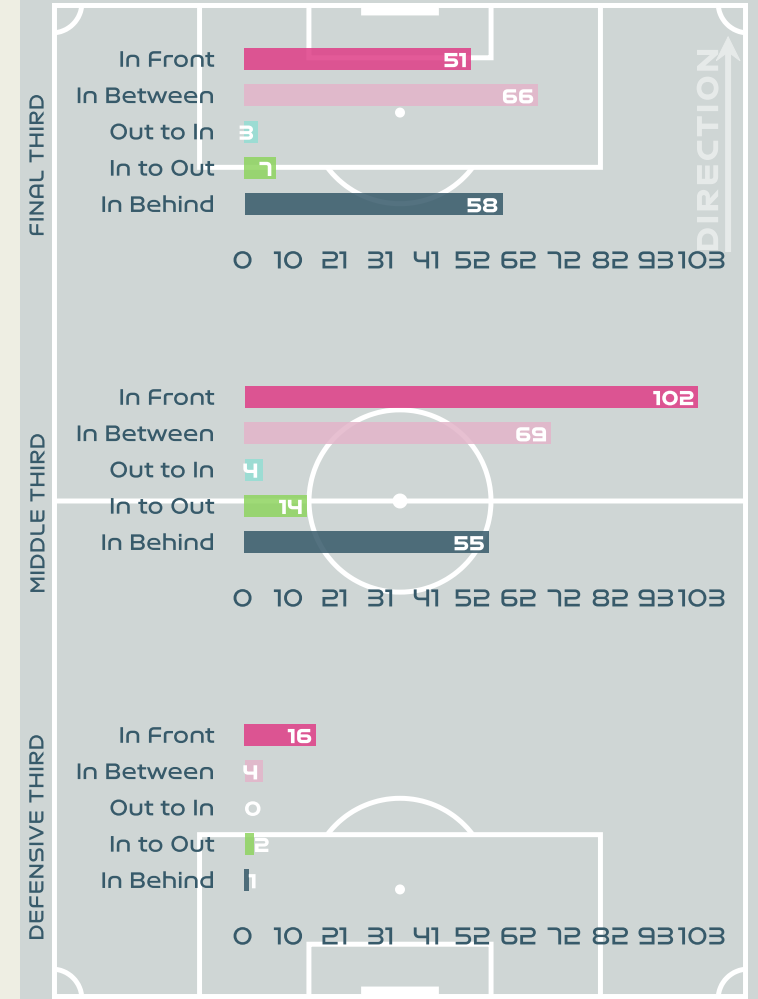


- In Front
- In Between
- Out to In
- In to Out
- In Behind

Top Ranked Players

Type	Player	Movements
In Front	20 ZELEM Katie	46
In Between	8 STANWAY Georgia	30
Out to In	8 STANWAY Georgia	3
In to Out	7 JAMES Lauren	7
In Behind	2 BRONZE Lucy	16

Movement Types Pitch Third





OUT OF POSSESSION



China PR v England





Defensive Actions

61

Forced Turnovers

39

Possession Regained

4

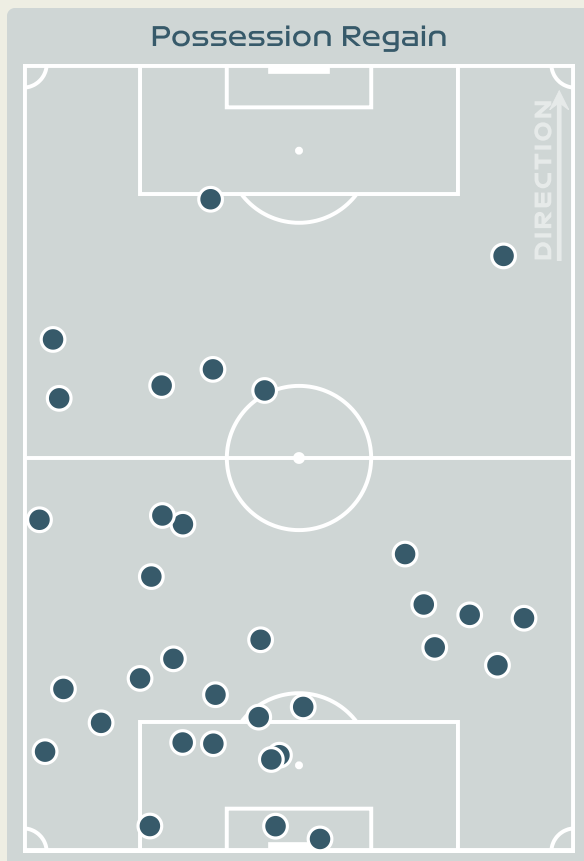
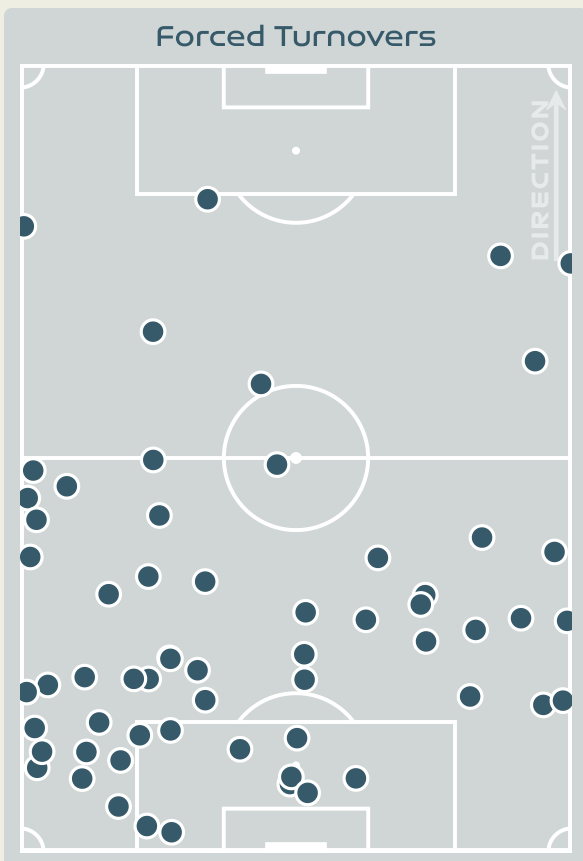
Interceptions

38

Tackles

2.07

Possession Actions / Defensive Action



Blocks



Possession Contests



Most Possession Regains

9

CHEN Qiaozhu
LEFT BACK

#	Player	Total Possession Regains
1	ZHU Yu	1
2	LI Mengwen	3
7	WANG Shuang	0
8	YAO Wei	6
11	WANG Shanshan	4
13	YANG Lina	3
14	LOU Jiahui	1
15	CHEN Qiaozhu	9
16	YAO Lingwei	4
17	WU Chengshu	1
19	ZHANG Linyan	2
3	DOU Jiaxing	1
5	WU Haiyan	3
9	SHEN Mengyu	1
21	GU Yasha	0



Defensive Actions

82

Forced Turnovers

49

Possession Regained

5

Interceptions

36

Tackles

6.88

Possession Actions / Defensive Action

Blocks



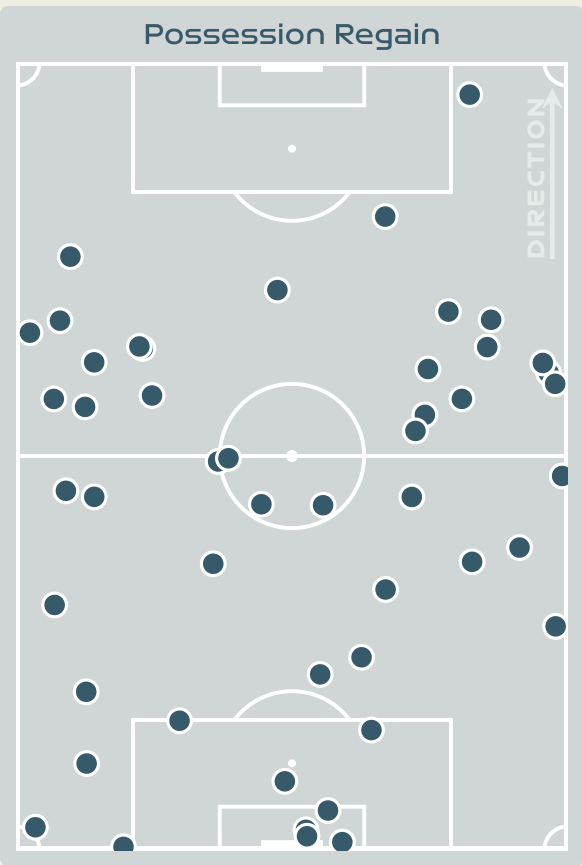
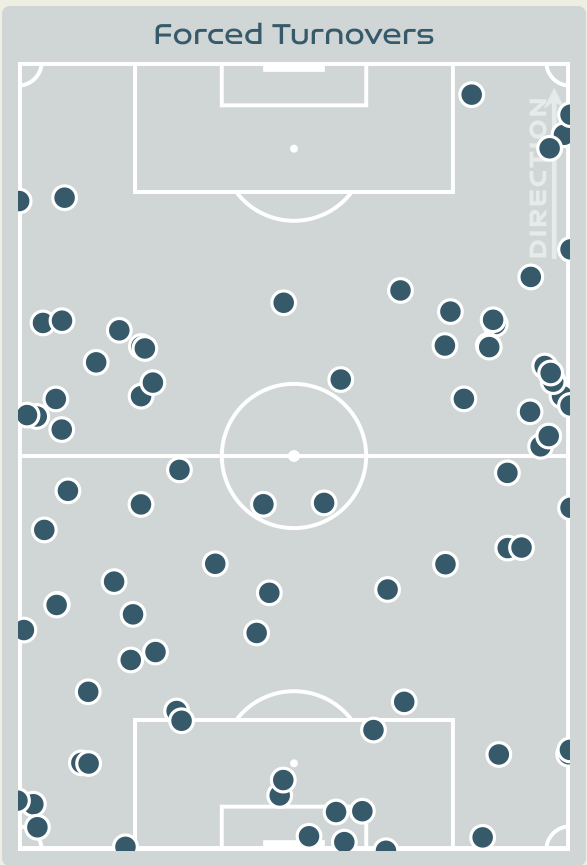
Possession Contests



Most Possession Regains

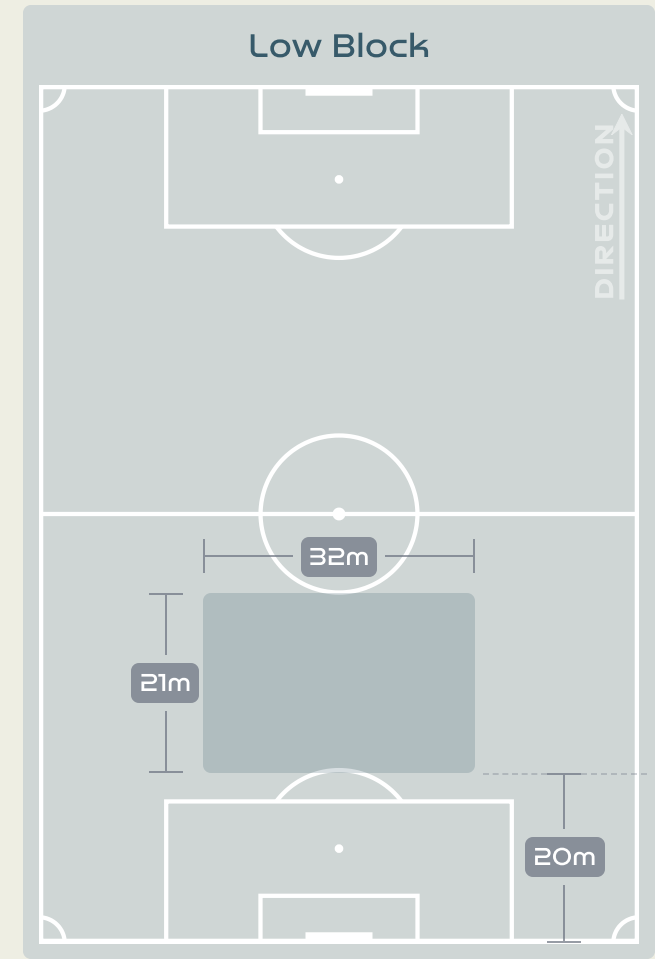
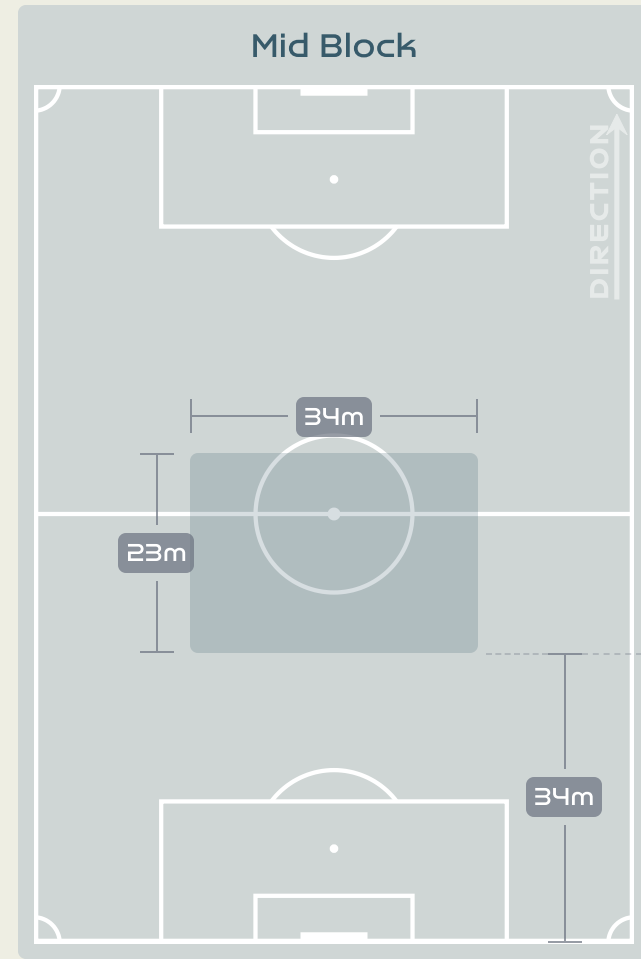
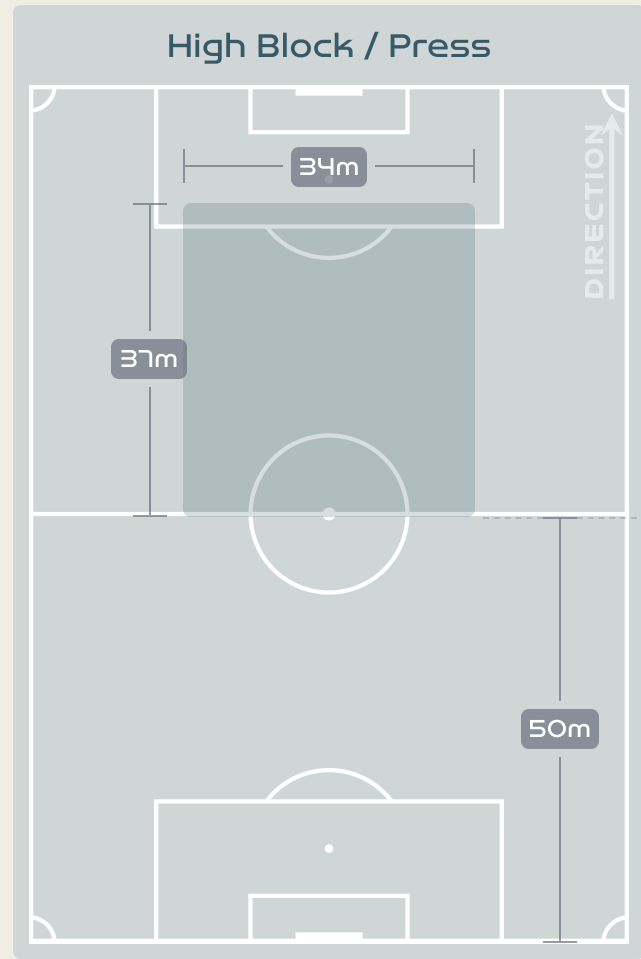
9

BRIGHT Millie
CENTRE BACK

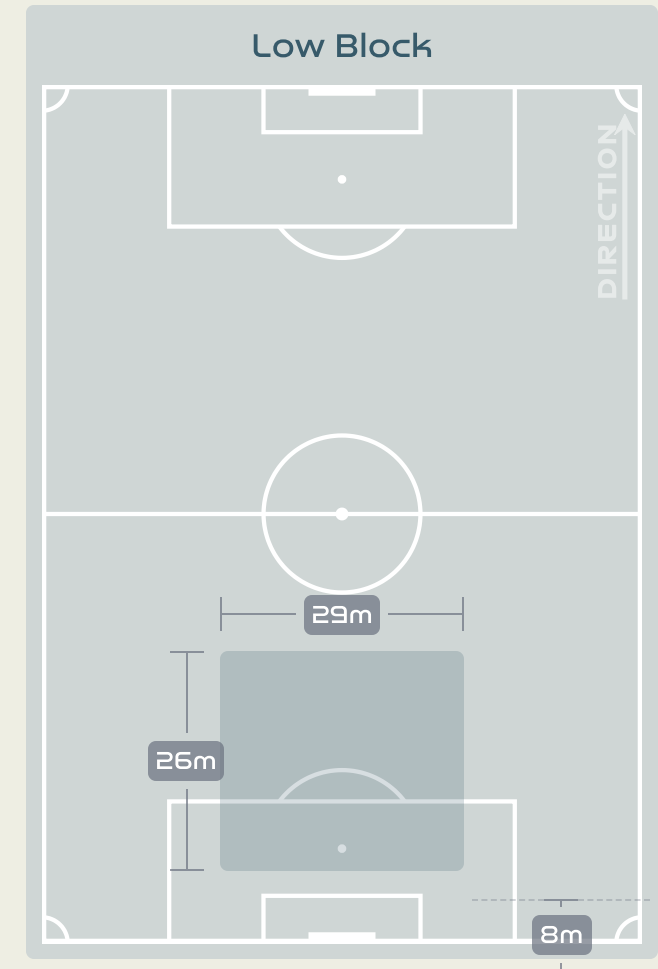
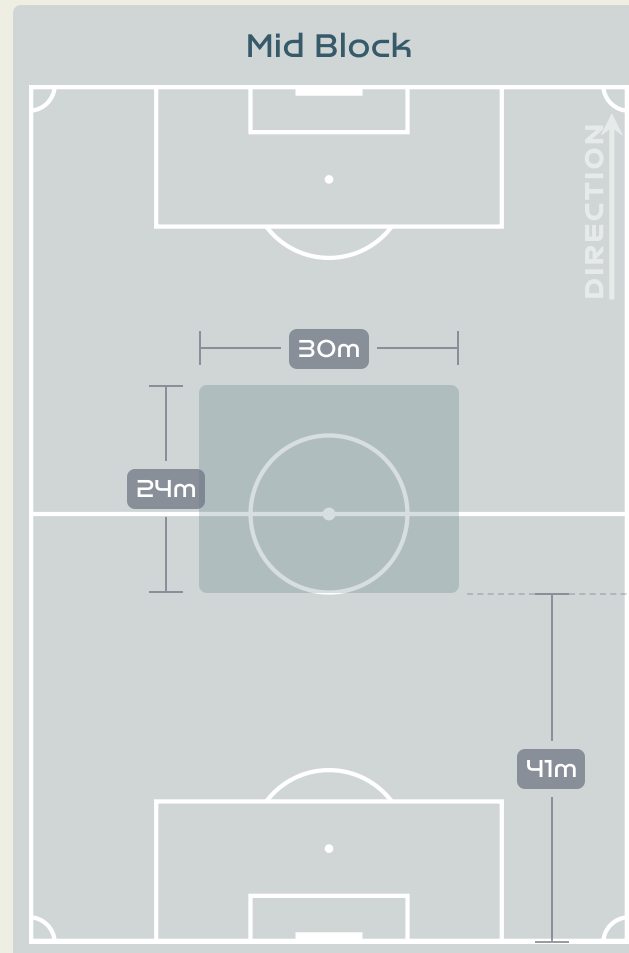
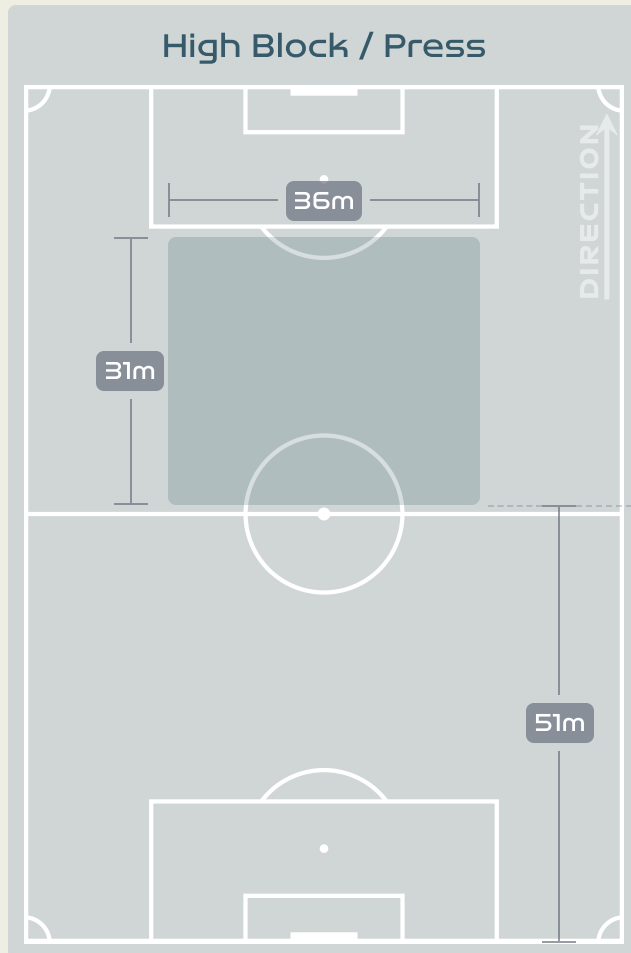


#	Player	Total Possession Regains
1	EARPS Mary	3
2	BRONZE Lucy	3
5	GREENWOOD Alex	5
6	BRIGHT Millie	9
7	JAMES Lauren	6
8	STANWAY Georgia	3
9	DALY Rachel	7
11	HEMP Lauren	1
16	CARTER Jessica	2
20	ZELEM Katie	3
23	RUSSO Alessia	1
3	CHARLES Niamh	1
10	TOONE Ella	0
17	COOMBS Laura	3
18	KELLY Chloe	1
19	ENGLAND Beth	1

Defensive Line Height & Team Length



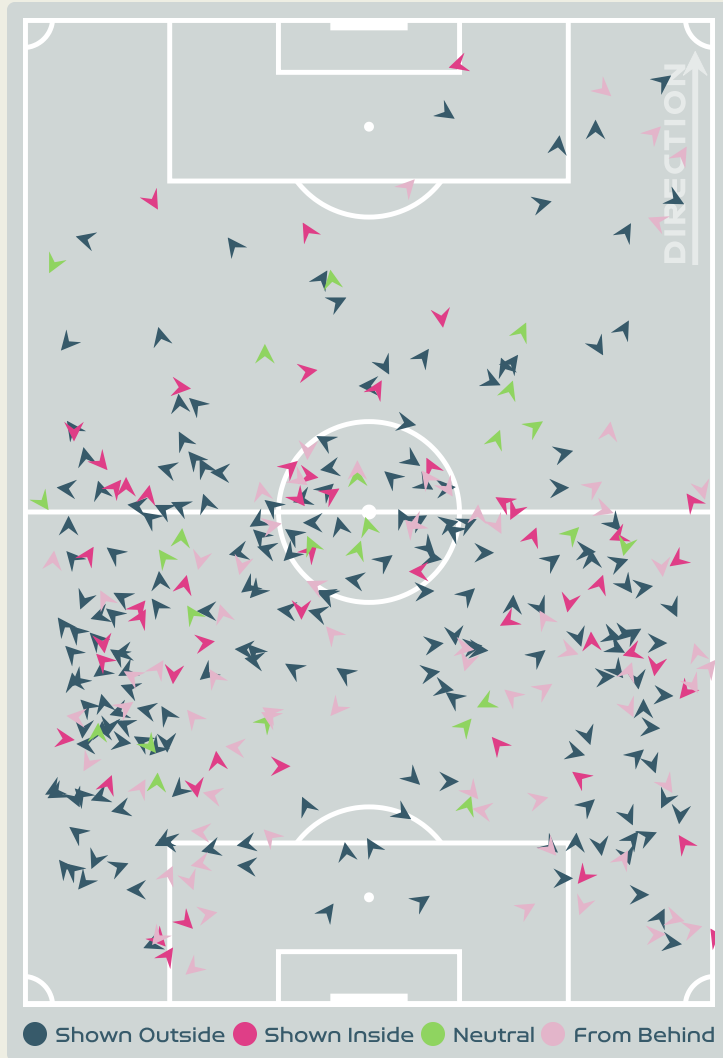
Defensive Line Height & Team Length



Defensive Pressure



China PR



England 

341	Total Pressures	161
59	Direct Pressures	52
1.44s	Avg Pressure Duration	1.32s
61	Forced Turnovers	82
16.25s	Ball Recovery Time	6.37s
134	Pushing on into Pressing	67
336	Pushing on	160
54	Pressing Direction Inside	22
192	Pressing Direction Outside	81

Most Direct Pressures

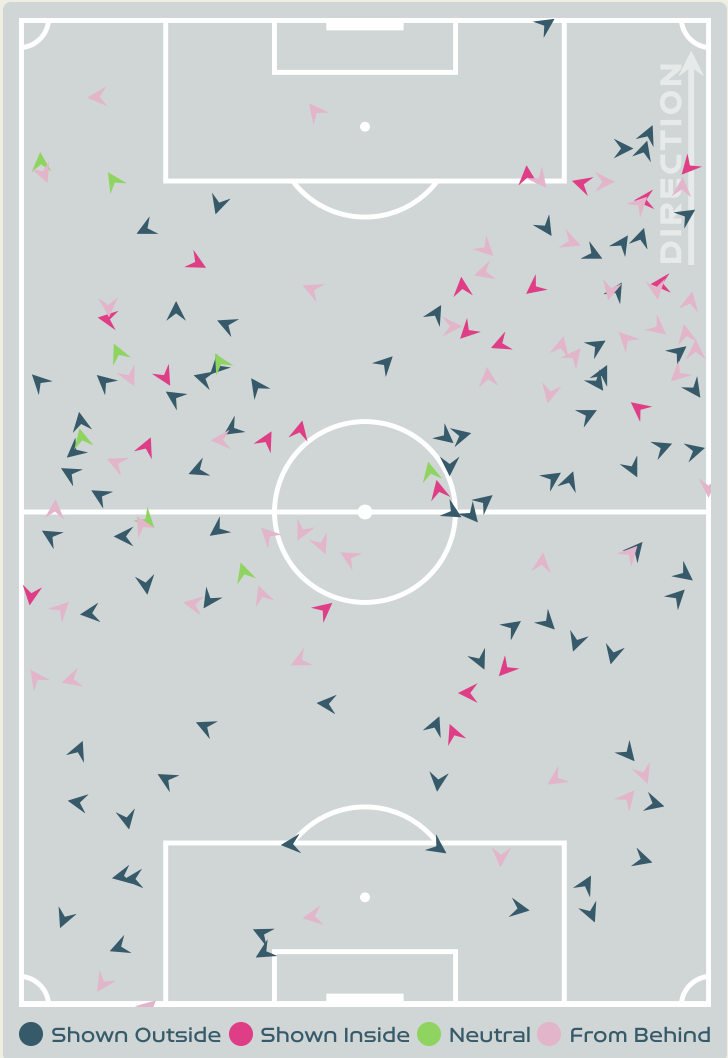
11

CHEN Qiaozhu
LEFT BACK

Most Direct Pressures

8

ZELEM Katie
LEFT CENTRE MIDFIELD





GOALKEEPING



China PR v England

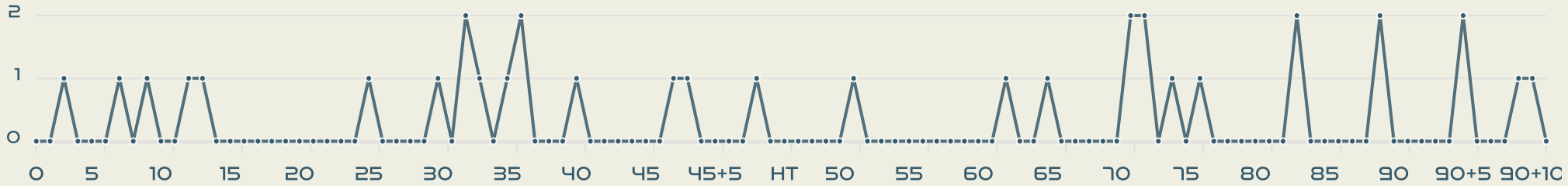


Goalkeeping Involvement



China PR

China PR GK Involvement Timeline



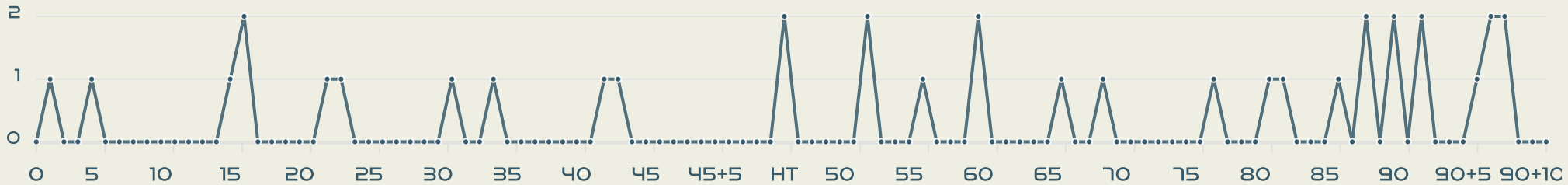
34

Total Involvements



England

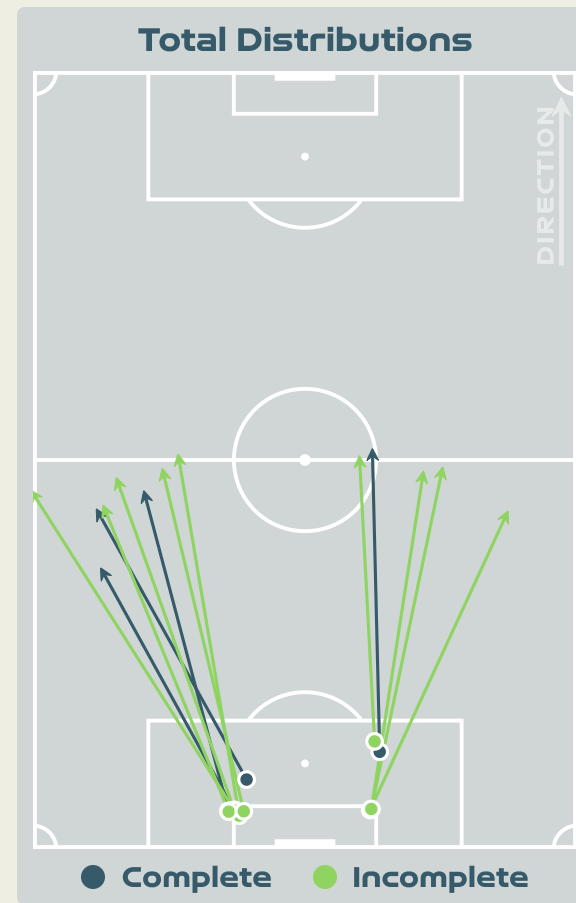
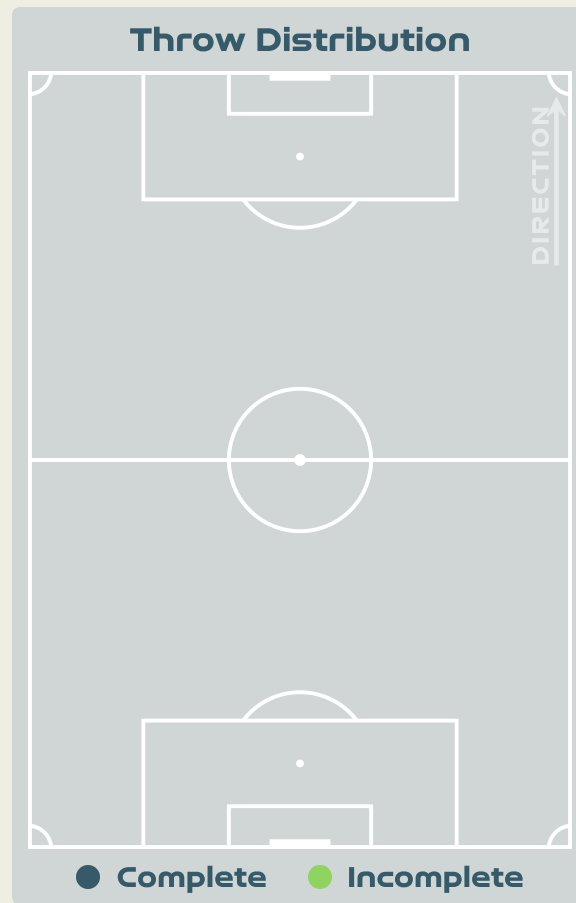
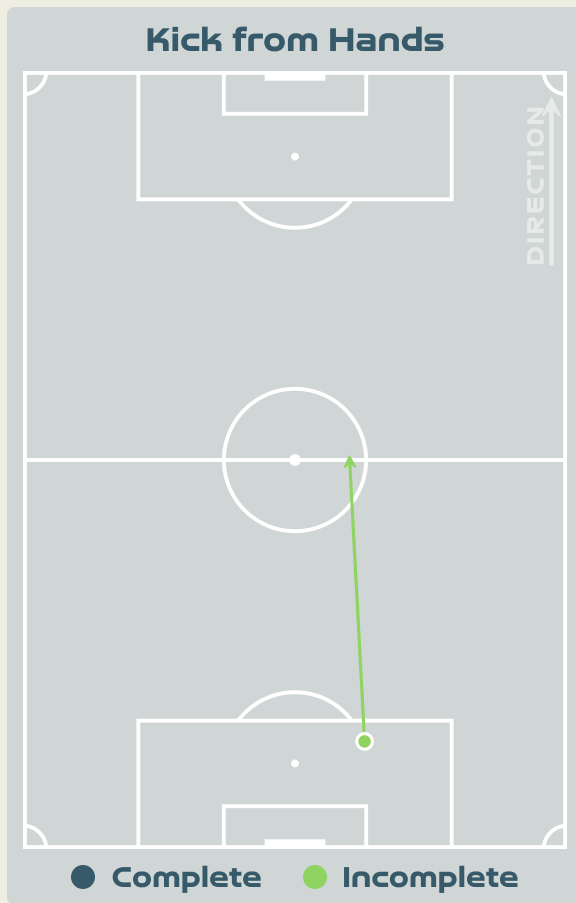
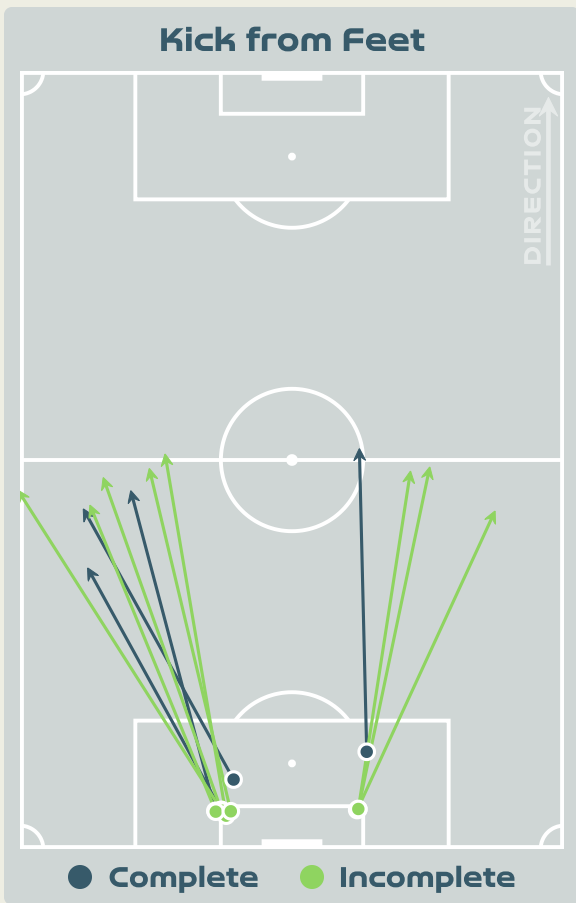
England GK Involvement Timeline



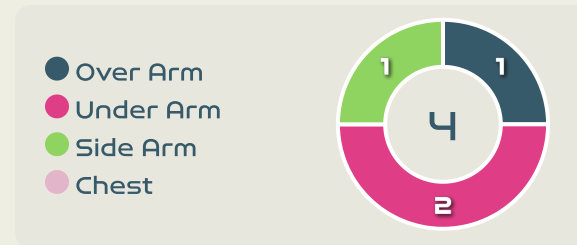
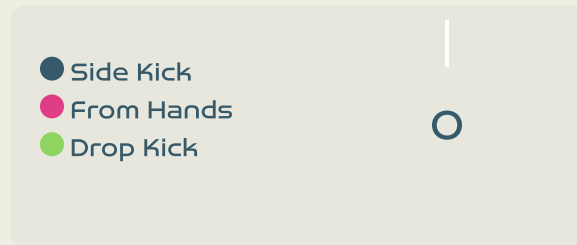
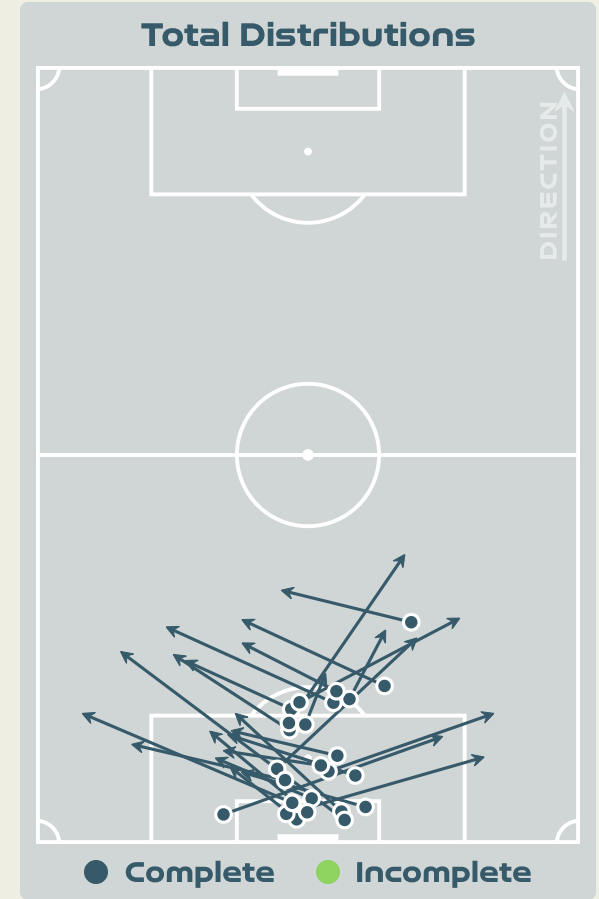
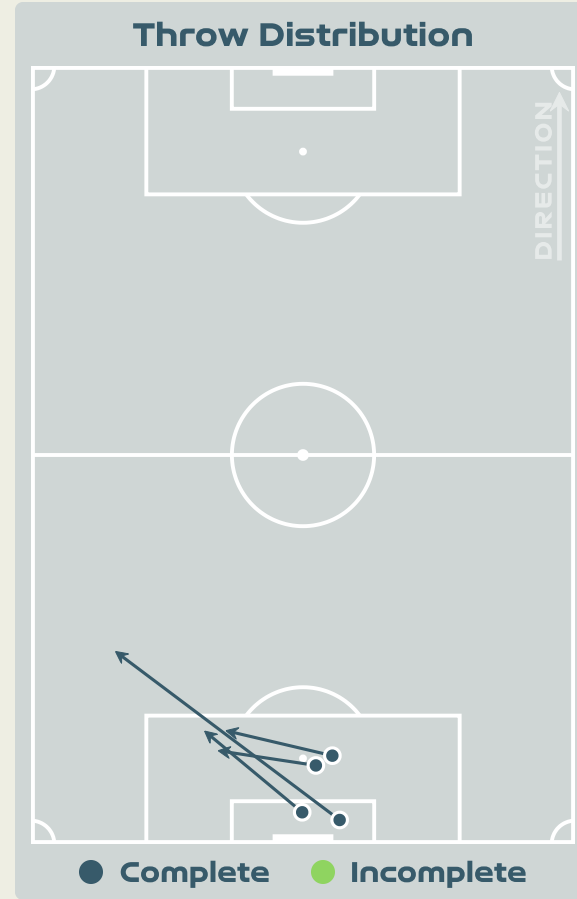
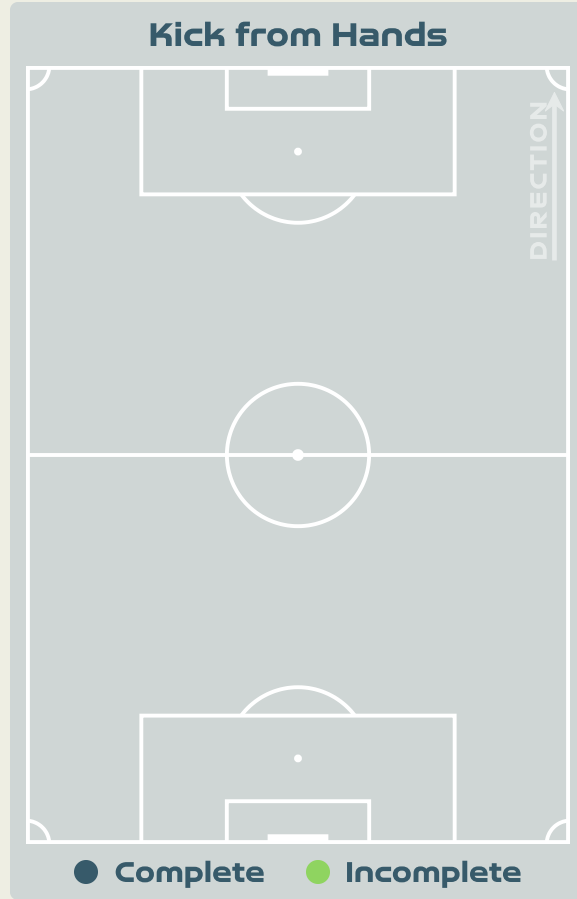
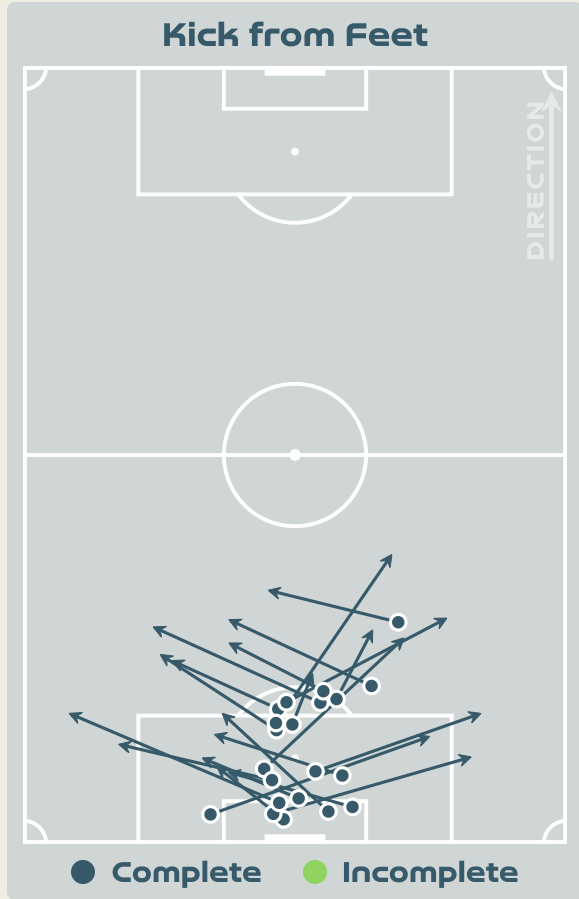
35

Total Involvements

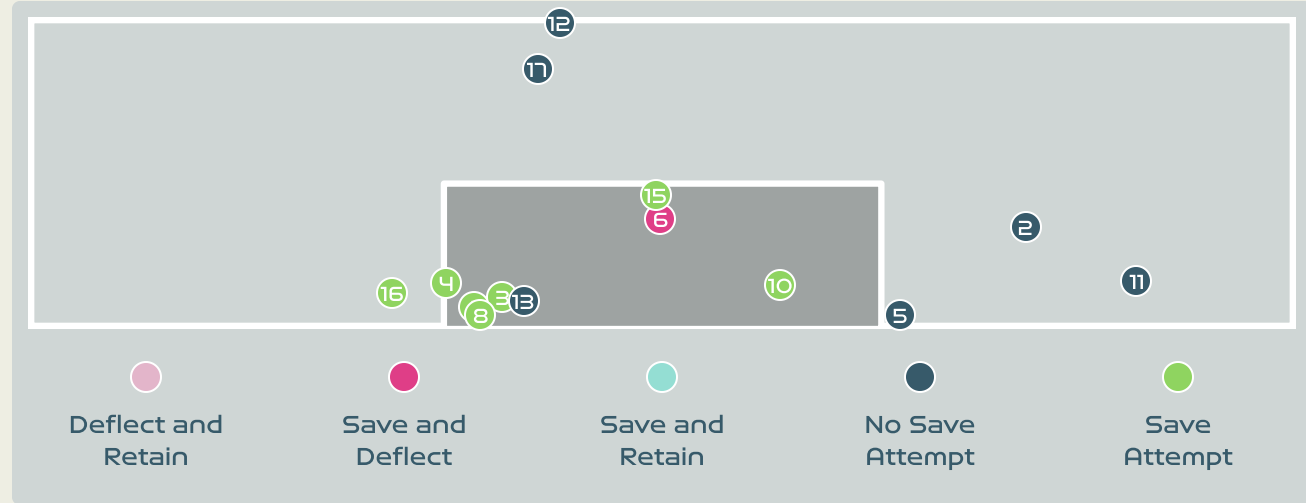
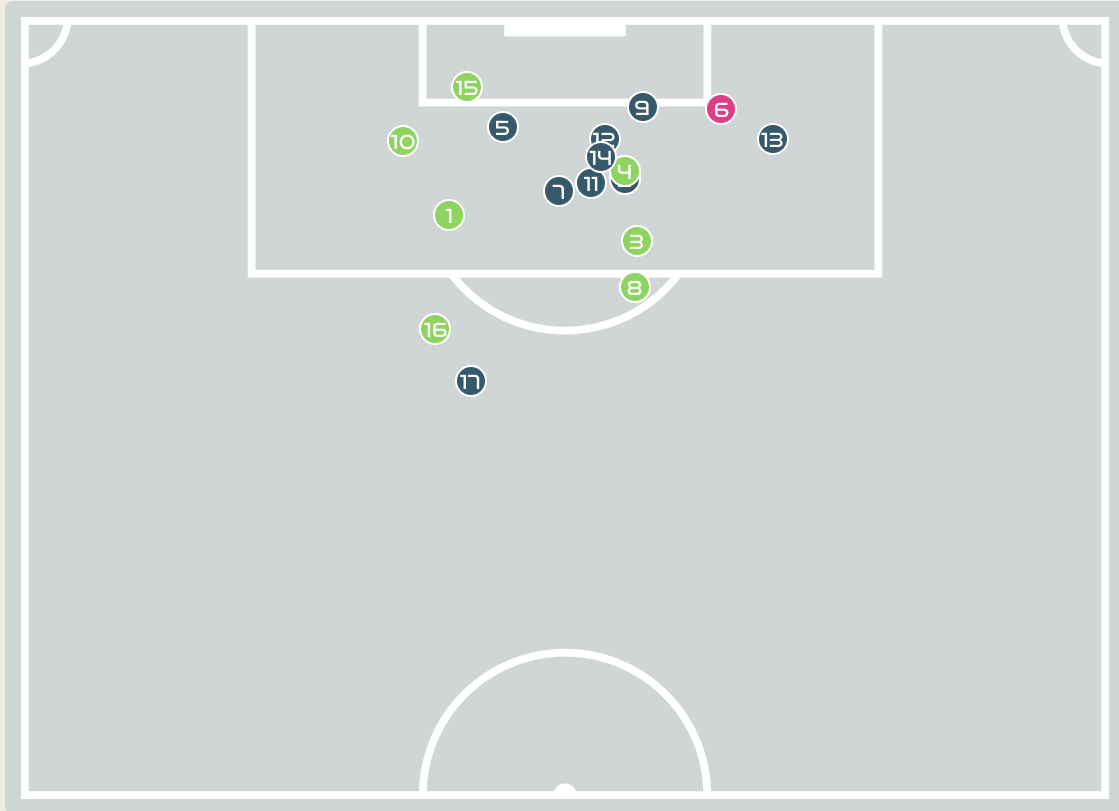
Goalkeeping Distribution



Goalkeeping Distribution



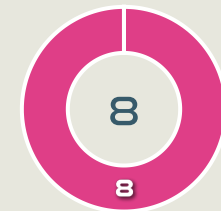
Goal Prevention



Intervention Type



Intervention Body Type



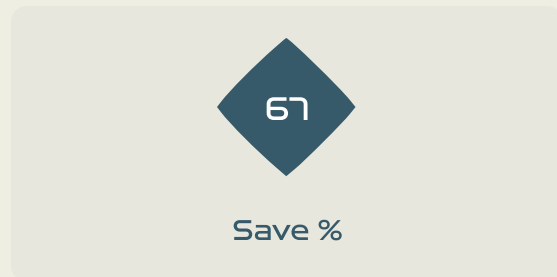
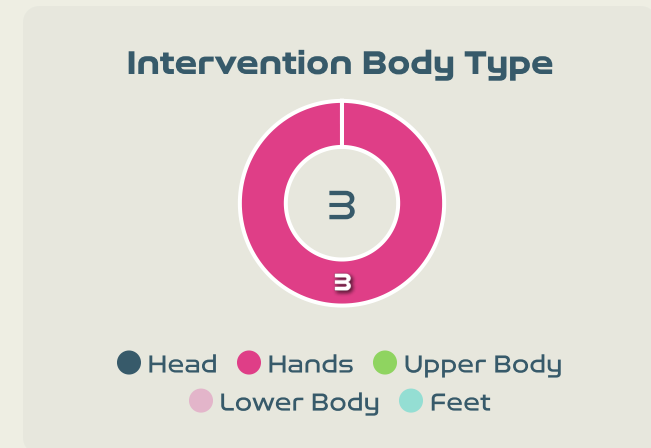
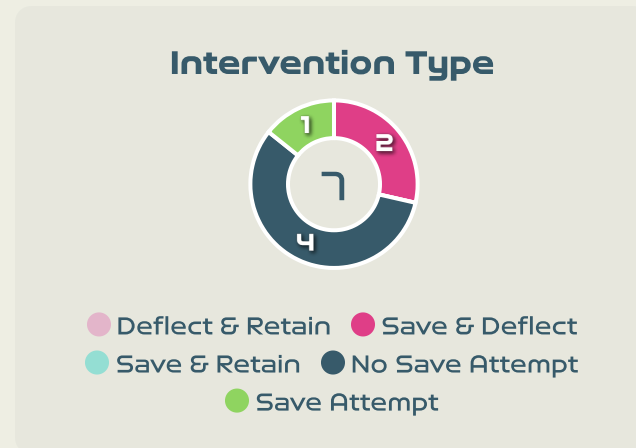
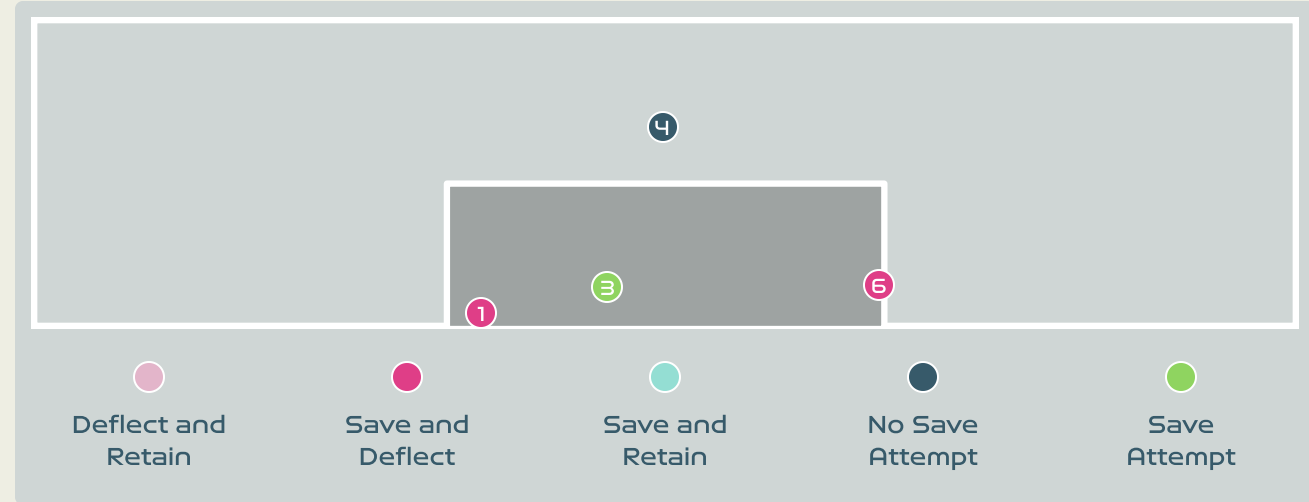
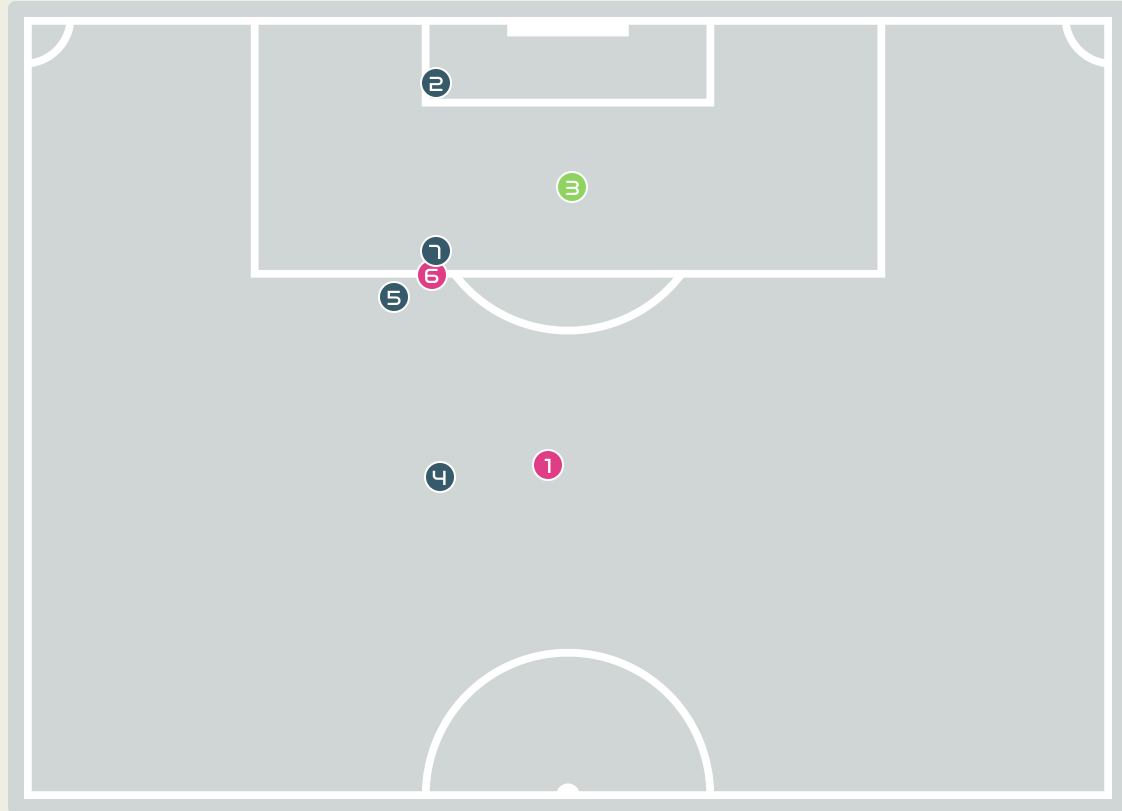
Total Attempts on Goal Faced



Save %

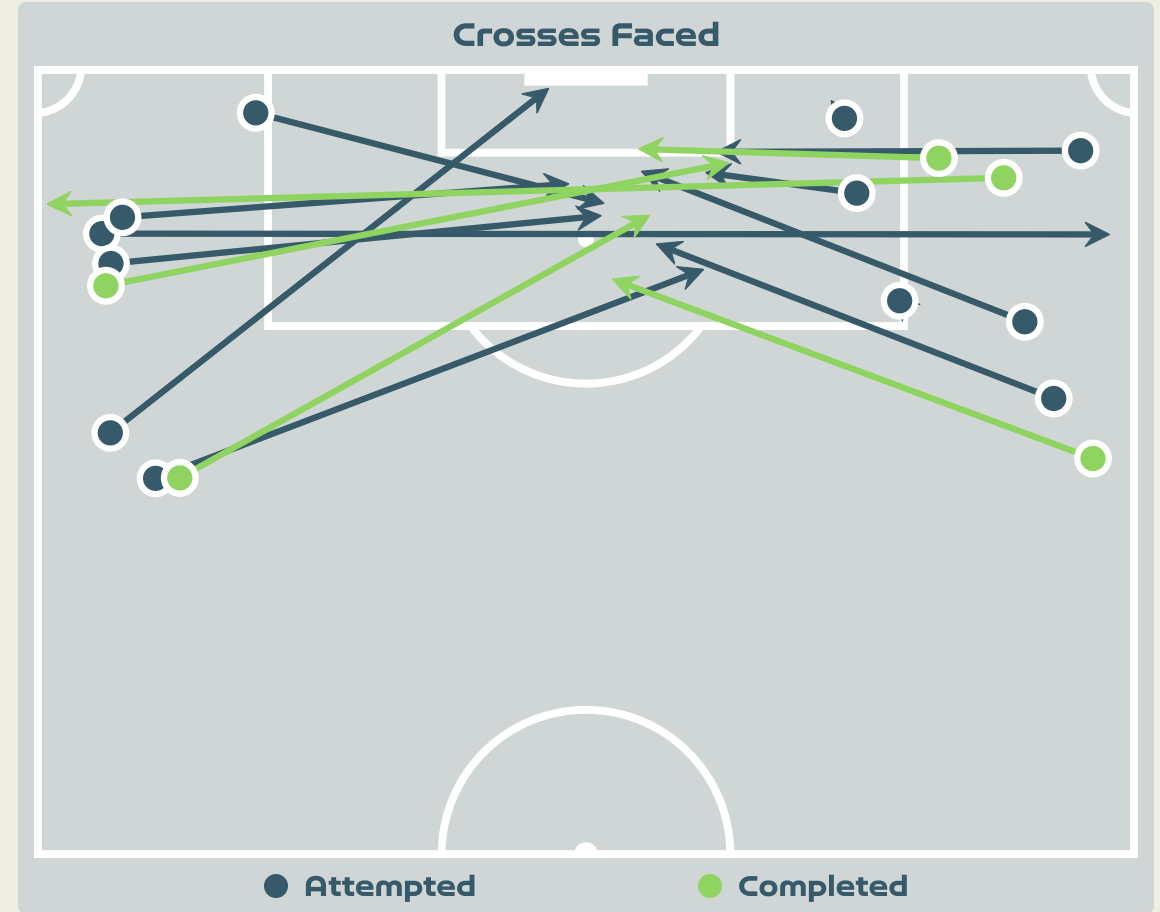
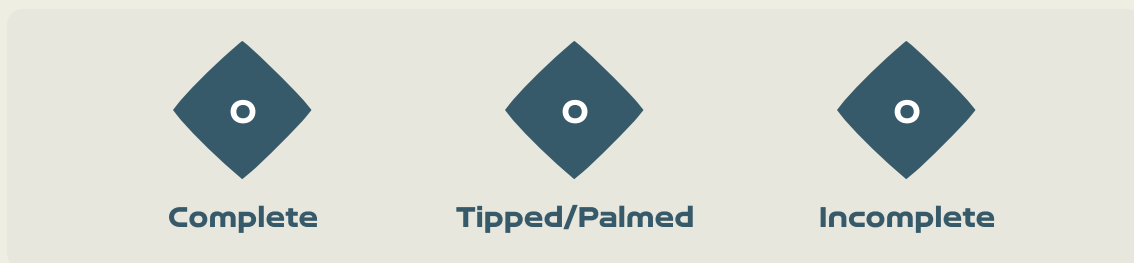
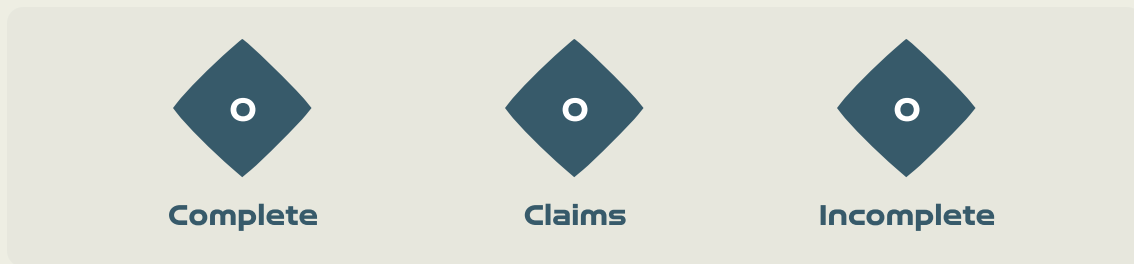
Total Attempts on Goal Faced	Total Goal Interventions	Save & Retain	Deflect & Retain	Save & Deflect	Save Attempt	No Save Attempt
17	1	0	0	1	7	9

Goal Prevention



Total Attempts on Goal Faced	Total Goal Interventions	Save & Retain	Deflect & Retain	Save & Deflect	Save Attempt	No Save Attempt
7	2	0	0	2	1	4

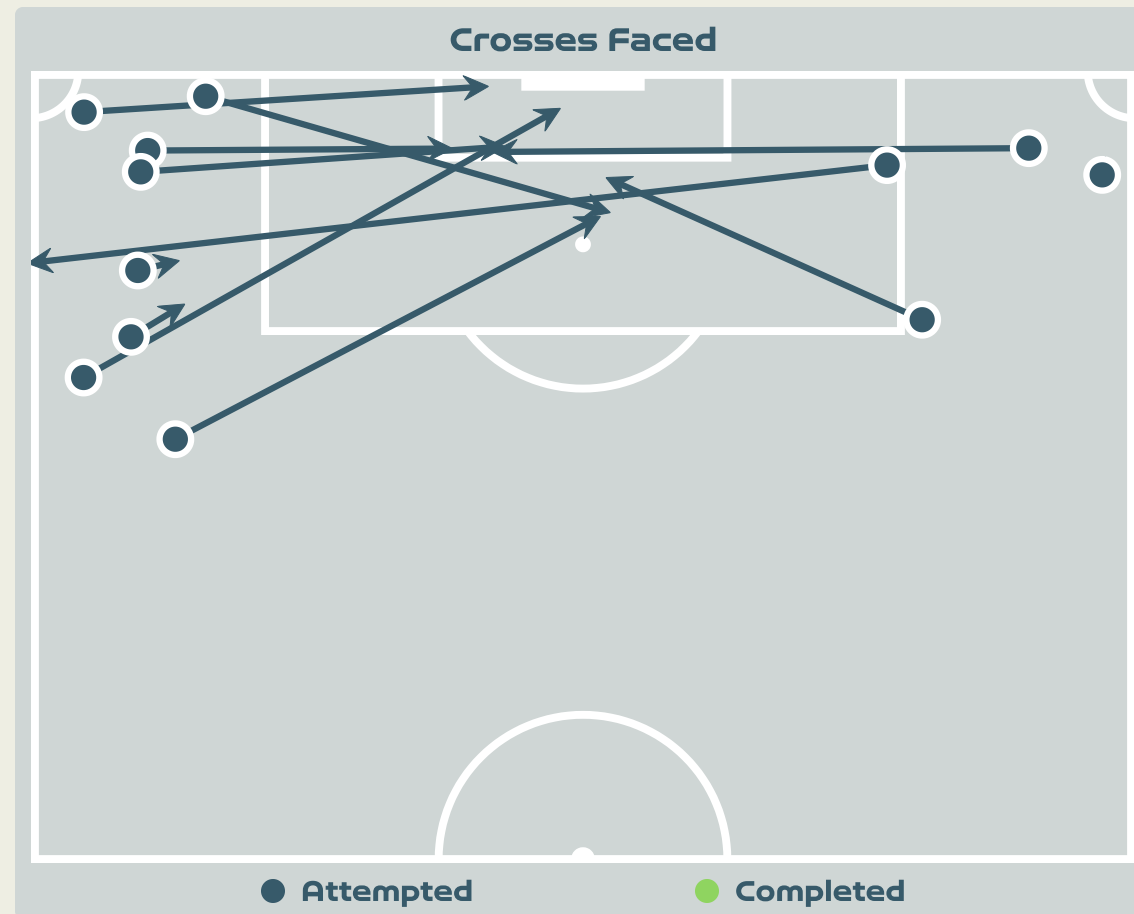
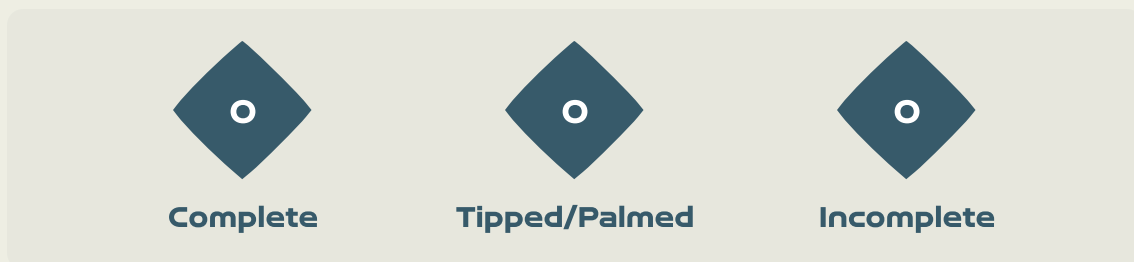
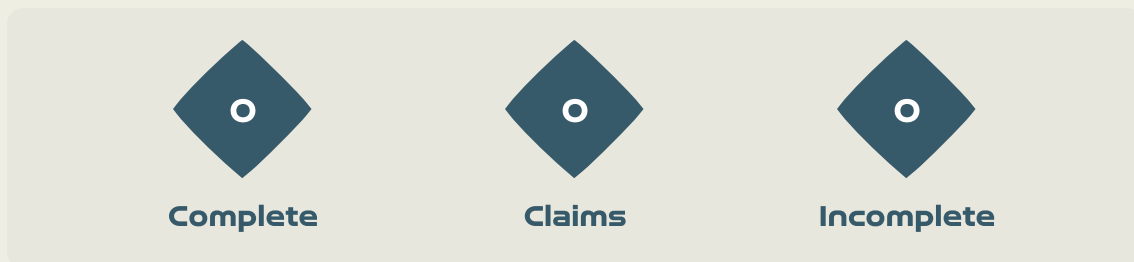
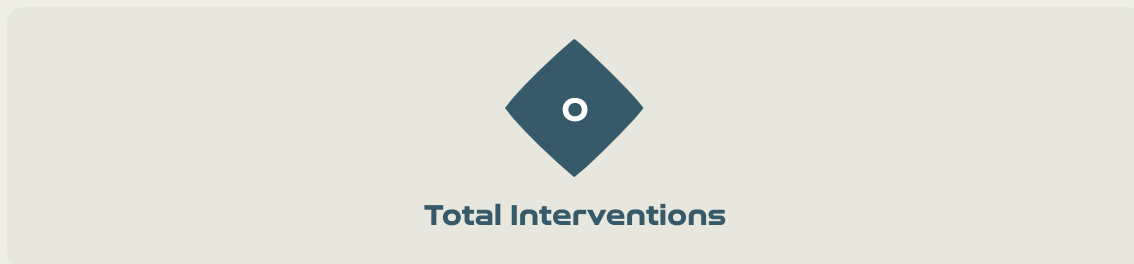
Aerial Control



Delivery Types Faced

Total	In Swing	Out Swing	Driven	Lofted	Cutback	Push
21	2	3	1	12	0	3

Aerial Control



Delivery Types Faced

Total	In Swing	Out Swing	Driven	Lofted	Cutback	Push
15	4	2	3	4	0	2



SET PLAYS



China PR v England



Set Plays - Corners



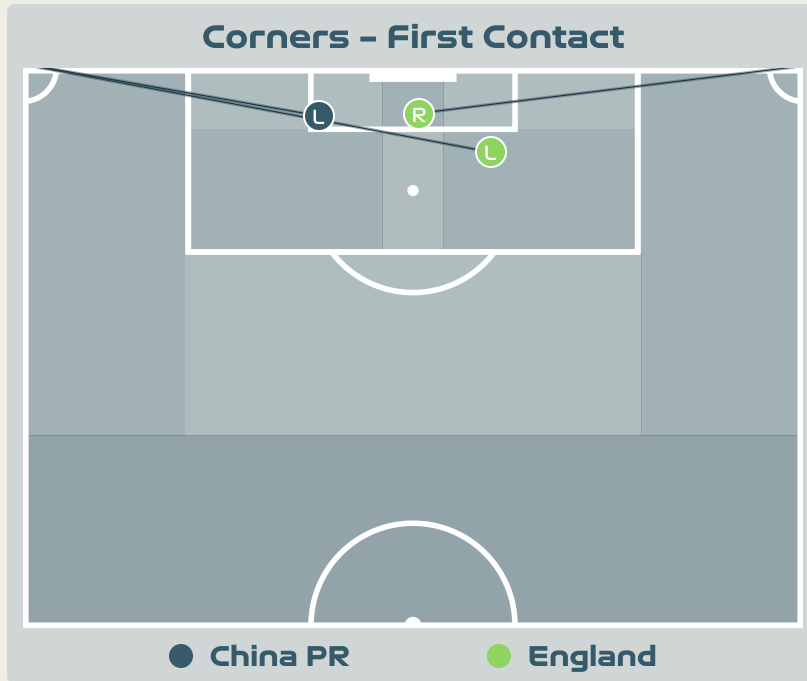
40
Total Set Plays

9
Total Free Kicks

1
Total Penalties

3
Total Corners

27
Total Throw Ins



Delivery Type	From Left Side	From Right Side	Total
Direct to Area	2	1	3
Short	0	0	0
Edge of Penalty Area	0	0	0

Delivery Style	Total
Inswing	2
Outswing	0
Driven	0

Free Kicks	
Type	Total
Direct	7
Direct (on target)	0
Direct (off target)	0
Indirect	2

First Contacts on China PR Crosses

1

By China PR

2

By England

Top 5 Player First Contacts		
Player	Team	Total
YANG Lina	China PR	1
GREENWOOD Alex	England	1
BRIGHT Millie	England	1

Set Plays - Corners



38

Total Set Plays

5

Total Free Kicks

0

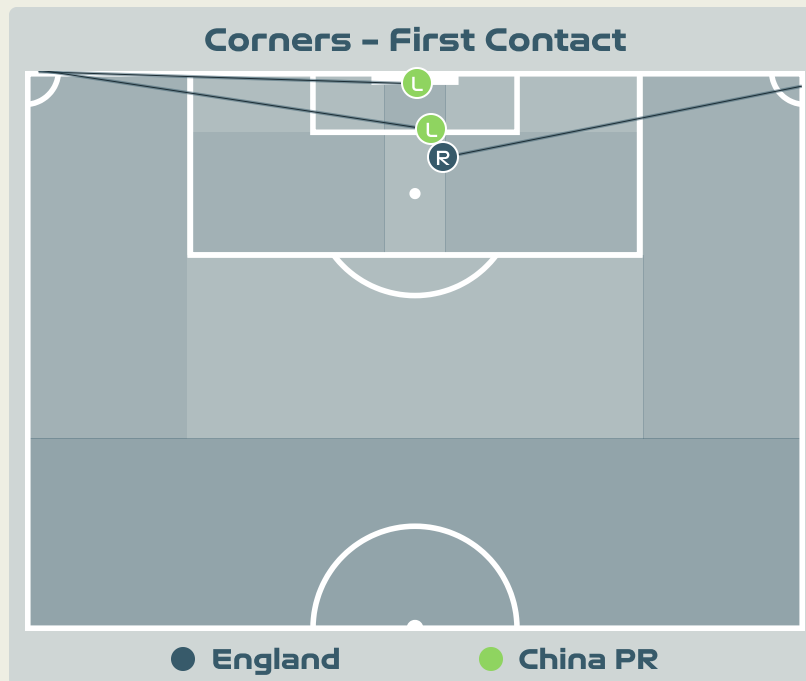
Total Penalties

4

Total Corners

29

Total Throw Ins



Delivery Type	From Left Side	From Right Side	Total
Direct to Area	2	2	4
Short	0	0	0
Edge of Penalty Area	0	0	0

Delivery Style	Total
Inswing	1
Outswing	0
Driven	1

Free Kicks	
Type	Total
Direct	5
Direct (on target)	0
Direct (off target)	0
Indirect	0

First Contacts on England Crosses

1

By England

2

By China PR

Top 5 Player First Contacts		
Player	Team	Total
DALY Rachel	England	1
ZHU Yu	China PR	1
CHEN Qiaozhu	China PR	1



INDIVIDUAL DATA IN POSSESSION



China PR v England



In Possession - Distributions



#	Player	Passes Attempted	Passes Completed	Pass Completion %	Switches of Play	Crosses Attempted	Crosses Completed	Line Breaks Attempted	Line Breaks Completed	Line Break Completion %	Ball Progressions	Take Ons	Step Ins	Attempts at Goal	Goals
1	ZHU Yu	13	4	31%	0	0	0	7	1	14%	0	0	0	0	0
2	LI Mengwen	33	27	82%	0	2	0	13	10	76%	2	2	0	0	0
7	WANG Shuang	19	14	74%	0	2	0	4	2	50%	0	0	0	1	1
8	YAO Wei	16	10	62%	0	0	0	8	4	50%	0	0	0	0	0
11	WANG Shanshan	17	13	76%	0	0	0	7	5	71%	0	0	0	0	0
13	YANG Lina	31	30	97%	0	0	0	13	12	92%	0	0	0	3	0
14	LOU Jiahui	24	16	67%	0	0	0	5	3	60%	0	0	0	0	0
15	CHEN Qiaozhu	44	24	55%	0	4	0	23	8	34%	2	0	2	1	0
16	YAO Lingwei	22	17	77%	0	2	1	4	2	50%	0	0	0	0	0
17	WU Chengshu	12	8	67%	0	0	0	3	1	33%	0	0	0	1	0
19	ZHANG Linyan	28	21	75%	0	2	0	6	5	83%	0	0	0	0	0
3	DOU Jiaxing	0	0	0%	0	0	0	0	0	0%	0	0	0	0	0
5	WU Haiyan	9	4	44%	0	0	0	5	1	20%	0	0	0	0	0
9	SHEN Mengyu	2	2	100%	0	0	0	0	0	0%	0	0	0	1	0
21	GU Yasha	5	4	80%	0	3	0	2	2	100%	1	1	0	0	0

In Possession - Offers & Receptions



			Offer movement types						
#	Player	Total Offers	In Front	In Between	Out to In	In to Out	In Behind	No Movement	Offers Received
1	ZHU Yu	0	0	0	0	0	0	0	0
2	LI Mengwen	9	4	1	0	0	0	4	5
7	WANG Shuang	25	5	10	3	0	5	2	9
8	YAO Wei	4	2	0	0	0	0	2	1
11	WANG Shanshan	3	0	0	0	0	0	3	2
13	YANG Lina	10	4	2	0	1	0	3	5
14	LOU Jiahui	27	2	16	0	1	6	2	12
15	CHEN Qiaozhu	16	2	0	0	0	1	13	7
16	YAO Lingwei	7	5	2	0	0	0	0	1
17	WU Chengshu	16	0	4	1	3	4	4	9
19	ZHANG Linyan	45	6	7	1	6	11	14	18
3	DOU Jiaying	0	0	0	0	0	0	0	0
5	WU Haiyan	6	4	0	0	0	0	2	3
9	SHEN Mengyu	2	0	1	0	1	0	0	1
21	GU Yasha	9	0	2	1	1	5	0	5

In Possession - Distributions



#	Player	Passes Attempted	Passes Completed	Pass Completion %	Switches of Play	Crosses Attempted	Crosses Completed	Line Breaks Attempted	Line Breaks Completed	Line Break Completion %	Ball Progressions	Take Ons	Step Ins	Attempts at Goal	Goals
1	EARPS Mary	25	25	100%	0	0	0	1	1	100%	0	0	0	0	0
2	BRONZE Lucy	64	50	78%	0	1	1	13	8	61%	4	2	2	2	0
5	GREENWOOD Alex	148	136	92%	5	1	0	40	33	82%	3	1	2	0	0
6	BRIGHT Millie	148	141	95%	1	0	0	28	25	89%	0	0	0	0	0
7	JAMES Lauren	41	37	90%	0	2	0	6	5	83%	0	0	0	2	2
8	STANWAY Georgia	28	26	93%	1	2	1	7	6	85%	3	1	2	1	0
9	DALY Rachel	47	40	85%	0	3	2	6	4	66%	0	0	0	2	1
11	HEMP Lauren	11	10	91%	0	2	0	2	2	100%	3	0	3	3	1
16	CARTER Jessica	115	107	93%	1	0	0	24	20	83%	1	0	1	0	0
20	ZELEM Katie	70	67	96%	1	4	1	15	13	86%	0	0	0	0	0
23	RUSSO Alessia	14	11	79%	1	3	1	2	2	100%	0	0	0	2	1
3	CHARLES Niamh	18	18	100%	0	1	0	6	6	100%	1	0	1	0	0
10	TOONE Ella	16	15	94%	0	1	0	3	3	100%	0	0	0	0	0
17	COOMBS Laura	21	16	76%	0	0	0	2	2	100%	0	0	0	3	0
18	KELLY Chloe	8	6	75%	0	1	1	2	1	50%	2	2	0	2	1
19	ENGLAND Beth	10	9	90%	0	0	0	2	1	50%	0	0	0	0	0

In Possession - Offers & Receptions



			Offer movement types						
#	Player	Total Offers	In Front	In Between	Out to In	In to Out	In Behind	No Movement	Offers Received
1	EARPS Mary	12	0	0	0	0	0	12	6
2	BRONZE Lucy	46	8	0	2	0	16	20	20
5	GREENWOOD Alex	95	15	2	0	1	1	76	61
6	BRIGHT Millie	43	2	0	0	0	2	39	14
7	JAMES Lauren	69	15	25	0	7	13	9	23
8	STANWAY Georgia	63	20	30	3	3	3	4	24
9	DALY Rachel	57	13	0	0	0	7	37	18
11	HEMP Lauren	25	0	11	0	1	13	0	7
16	CARTER Jessica	34	6	0	0	0	0	28	19
20	ZELEM Katie	77	46	20	0	1	0	10	34
23	RUSSO Alessia	19	2	6	0	1	10	0	5
3	CHARLES Niamh	30	7	0	0	0	12	11	9
10	TOONE Ella	36	20	6	0	2	1	7	11
17	COOMBS Laura	57	11	25	2	7	11	1	14
18	KELLY Chloe	22	4	6	0	0	11	1	5
19	ENGLAND Beth	23	0	8	0	0	14	1	6



INDIVIDUAL DATA OUT OF POSSESSION



China PR v England



Out of Possession

China PR



#	Player	Tackles Made / Won	Blocks	Interceptions	Pressing Direct	Pressing Indirect	Duels Won - Aerial	Duels Won - Physical	Possession Contests won	Clearances	Loose Ball Receptions	Pushing On	Pushing On into Pressing	Possession Regains	Possession Interrupted
1	ZHU Yu	0 / 0	0	0	0	0	0	0	0	0	0	0	0	1	0
2	LI Mengwen	3 / 0	3	0	4	11	0	0	0	5	4	27	7	3	8
7	WANG Shuang	1 / 0	3	0	4	39	0	0	0	0	4	32	20	0	2
8	YAO Wei	0 / 0	5	2	4	12	3	1	4	11	3	25	5	6	10
11	WANG Shanshan	3 / 0	3	1	4	4	1	0	1	6	7	21	3	4	10
13	YANG Lina	2 / 0	0	0	2	13	4	0	5	4	12	33	5	3	2
14	LOU Jiahui	4 / 1	2	0	8	49	0	0	1	1	4	23	8	1	4
15	CHEN Qiaozhu	6 / 3	5	1	11	28	4	0	4	11	7	45	25	9	10
16	YAO Lingwei	3 / 1	0	0	5	12	1	0	1	4	4	32	9	4	2
17	WU Chengshu	3 / 0	2	0	7	38	3	0	3	1	1	17	8	1	3
19	ZHANG Linyan	5 / 1	4	0	4	55	0	0	0	0	11	51	36	2	4
3	DOU Jiaxing	0 / 0	0	0	0	0	0	0	0	2	2	2	0	1	1
5	WU Haiyan	4 / 1	2	0	2	3	0	0	0	2	0	13	1	3	3
9	SHEN Mengyu	3 / 0	1	0	4	5	0	0	1	0	2	7	5	1	2
21	GU Yasha	1 / 0	0	0	0	13	0	0	0	0	2	8	2	0	1

Out of Possession



#	Player	Tackles Made / Won	Blocks	Interceptions	Pressing Direct	Pressing Indirect	Duels Won - Aerial	Duels Won - Physical	Possession Contests won	Clearances	Loose Ball Receptions	Pushing On	Pushing On into Pressing	Possession Regains	Possession Interrupted
1	EARPS Mary	0 / 0	0	0	0	0	0	0	0	0	0	0	0	3	0
2	BRONZE Lucy	6 / 1	2	1	6	10	4	0	5	1	8	9	7	3	4
5	GREENWOOD Alex	4 / 2	2	0	4	5	2	0	2	4	5	17	4	5	3
6	BRIGHT Millie	4 / 2	2	1	5	6	4	0	4	15	7	19	7	9	12
7	JAMES Lauren	3 / 2	3	0	3	8	2	0	4	3	9	17	3	6	2
8	STANWAY Georgia	1 / 0	5	0	2	8	2	0	2	2	6	14	6	3	2
9	DALY Rachel	6 / 3	5	1	6	15	4	0	5	4	9	14	8	7	6
11	HEMP Lauren	1 / 1	1	0	4	11	2	0	2	0	1	6	3	1	0
16	CARTER Jessica	1 / 0	2	0	4	7	1	0	2	4	11	20	8	2	3
20	ZELEM Katie	4 / 2	3	0	8	13	3	0	4	3	11	16	7	3	5
23	RUSSO Alessia	1 / 0	1	0	2	8	0	1	3	0	5	9	4	1	1
3	CHARLES Niamh	1 / 0	0	1	1	3	0	0	0	1	3	2	1	1	1
10	TOONE Ella	0 / 0	1	0	1	1	0	0	0	0	1	1	0	0	0
17	COOMBS Laura	2 / 0	3	1	5	8	2	0	3	1	3	11	6	3	3
18	KELLY Chloe	1 / 1	0	0	0	2	0	0	0	0	2	0	0	1	0
19	ENGLAND Beth	1 / 1	0	0	1	4	1	0	1	0	2	5	3	1	0



INDIVIDUAL DATA PHYSICAL



China PR v England



Physical Data

China PR



#	Player	Total Distance (m)	Zone 1: 0-7 km/h (m)	Zone 2: 7-13km/h (m)	Zone 3: 13-19km/h (m)	Zone 4: 19-23km/h (m)	Zone 5: 23+ km/h (m)	High Speed Runs (Zone 4)	Sprints (Zone 5)	Top Speed (km/h)
1	ZHU Yu	3253.9	2761.9	418.5	68.0	5.5	0	10.0	1.0	20.0
2	LI Mengwen	8118.4	2496.4	3318.0	1907.8	284.1	111.2	158.0	30.0	29.6
7	WANG Shuang	8421.9	2851.7	3347.7	1804.0	302.3	116.2	152.0	32.0	27.5
8	YAO Wei	10221.0	3860.5	4199.8	1672.2	364.9	123.7	143.0	33.0	26.6
11	WANG Shanshan	9461.2	3852.6	3856.4	1445.7	216.7	89.9	126.0	20.0	29.1
13	YANG Lina	11166.2	3716.1	4611.7	2273.4	499.1	64.8	196.0	40.0	27.8
14	LOU Jiahui	12202.3	3472.8	4384.3	3436.2	799.3	109.8	287.0	61.0	27.4
15	CHEN Qiaozhu	11108.1	3686.8	3970.0	2509.3	720.9	221.1	212.0	65.0	29.8
16	YAO Lingwei	10086.5	3140.9	4013.4	2475.2	431.7	24.2	208.0	32.0	28.1
17	WU Chengshu	10157.5	3355.0	3522.6	2797.4	418.5	65.0	217.0	36.0	32.9
19	ZHANG Linyan	10588.9	4133.9	3269.9	2550.9	470.1	164.1	218.0	47.0	26.4
3	DOU Jiaxing	955.7	295.4	390.4	178.8	49.5	41.6	18.0	6.0	25.6
5	WU Haiyan	2954.5	862.4	1184.5	746.3	108.7	52.6	60.0	10.0	25.9
9	SHEN Mengyu	1223.6	219.5	518.3	345.7	110.1	30.0	32.0	11.0	27.9
21	GU Yasha	2989.1	1014.2	776.3	987.6	159.3	51.7	77.0	16.0	25.6

Physical Data



#	Player	Total Distance (m)	Zone 1: 0-7 km/h (m)	Zone 2: 7-13km/h (m)	Zone 3: 13-19km/h (m)	Zone 4: 19-23km/h (m)	Zone 5: 23+ km/h (m)	High Speed Runs (Zone 4)	Sprints (Zone 5)	Top Speed (km/h)
1	EARPS Mary	4923.2	4370.4	498.7	54.2	0	0	9.0	0	19.2
2	BRONZE Lucy	7883.0	2872.6	2074.8	1839.1	556.5	540.0	173.0	55.0	29.1
5	GREENWOOD Alex	9853.8	3301.0	4045.0	2065.3	327.1	115.3	178.0	30.0	27.0
6	BRIGHT Millie	10081.2	3872.2	3985.1	1944.7	213.7	66.5	181.0	20.0	25.7
7	JAMES Lauren	8648.7	2931.1	3637.7	1734.1	265.5	80.4	138.0	23.0	25.9
8	STANWAY Georgia	5478.6	1885.7	1923.0	1404.7	256.9	7.7	104.0	18.0	24.7
9	DALY Rachel	11233.2	3992.3	3484.5	2940.8	596.5	219.0	260.0	53.0	28.7
11	HEMP Lauren	7544.0	3084.7	2346.2	1508.0	377.2	228.6	151.0	41.0	28.9
16	CARTER Jessica	9715.8	3292.7	4114.7	1976.2	173.9	158.4	168.0	21.0	29.4
20	ZELEM Katie	11301.3	3265.0	5594.2	2251.2	161.6	30.5	192.0	15.0	24.1
23	RUSSO Alessia	8100.1	3064.3	2592.8	1927.8	356.4	158.8	163.0	35.0	31.2
3	CHARLES Niamh	3133.9	1151.4	959.0	741.2	204.6	77.7	63.0	16.0	28.6
10	TOONE Ella	2217.2	638.3	849.9	593.1	123.9	12.0	42.0	7.0	24.2
17	COOMBS Laura	5728.0	1913.2	2137.7	1317.5	288.7	71.6	116.0	26.0	25.9
18	KELLY Chloe	2862.9	1164.1	1010.0	426.6	124.8	137.4	48.0	18.0	29.2
19	ENGLAND Beth	3131.7	1081.7	1129.6	673.3	156.6	90.2	59.0	17.0	27.4

