



Norway 6 - 0 Philippines

Group A - Match 34
30 July 2023
19:00 Kick Off
Eden Park

POST MATCH SUMMARY REPORT

Match Summary - Teams

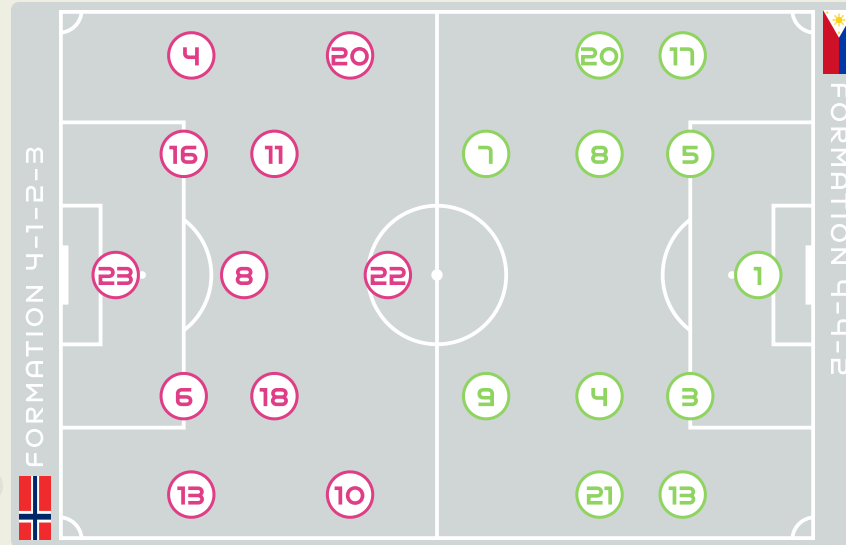


STARTING

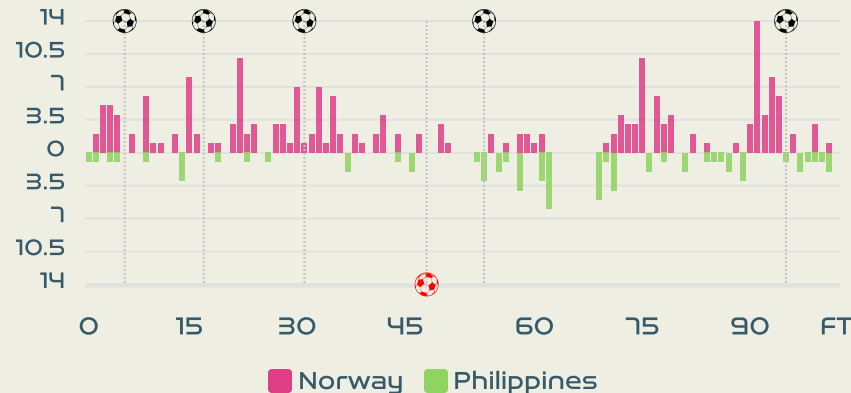
23	GK	MIKALSEN Aurora	
4	DF	HANSEN Tuva	
6	DF	MJELDE Maren (C)	
8	MF	BOE RISA Vilde	86'
10	FW	GRAHAM HANSEN Caroline	31' 82'
11	MF	REITEN Guro	53'
13	DF	BJELDE Thea	68'
16	DF	HARVIKEN Mathilde	81'
18	MF	MAANUM Frida	68'
20	FW	HAAVI Emilie	68'
22	FW	ROMAN HAUG Sophie	6' 17' 90+5'

SUBSTITUTES

1	GK	FISKERSTRAND Cecilie	
12	GK	PETTERSEN Guro	
2	DF	SONSTEVOLD Anja	68'
3	DF	HORTE Sara	
5	DF	BERGSVAND Guro	81'
7	MF	SYRSTAD ENGEN Ingrid	68'
9	FW	SAEVIK Karina	68'
14	FW	HEGERBERG Ada	
15	FW	EIKELAND Amalie	
17	FW	BLAKSTAD Julie	
19	DF	BRATBERG LUND Marit	
21	FW	JOSENDAL Anna	82'



Distribution in the Final Third



STARTING

McDANIEL Olivia	GK	1	
COWART Jessika	DF	3	
75'	SAWICKI Jaclyn	MF	4
(C) LONG Hali	DF	5	
74'	BOLDEN Sarina	FW	7
EGGESVIK Sara	MF	8	
57'	FLANIGAN Isabella	FW	9
BEARD Angela	DF	13	
57'	BARKER Alicia	DF	17
81'	QUEZADA Quinley	MF	20
54'	GUILLOU Katrina	FW	21

SUBSTITUTES

JOTA Kaiya	GK	18		
FONTANILLA Kiara	GK	22		
CESAR Malea	DF	2		
ANNIS Tahnai	MF	6		
74'	McDANIEL Chandler	FW	10	
CASTANEDA Anicka	MF	11		
75'	BUGAY Ryley	MF	12	
81'	SERRANO Meryll	MF	14	
FRILLES Carleigh	FW	15		
63'	81'	HARRISON Sofia	DF	16
57'	RANDLE Dominique	DF	19	
BONTA Reina	DF	23		

Match Summary - Key Statistics



Possession

Total	60.3%	14.2%	25.5%	Total
6	Goals			0
30 (12)	Attempts at Goal (On Target)			4 (1)
636 (558)	Total Passes (Complete)			258 (152)
88 %	Pass Completion %			59 %
143	Completed Line Breaks			43
21	Defensive Line Breaks			2
165	Receptions in the Final Third			42
42	Crosses			8
20	Ball Progressions			7
117 (27)	Defensive Pressures Applied (Direct Pressures)			346 (48)
58	Forced Turnovers			82
101	Second Balls			81
118.2 km	Total Distance Covered			116.2 km
5.4 km	Zone 4 - Low Speed Sprinting: 19-23km/h			6.7 km



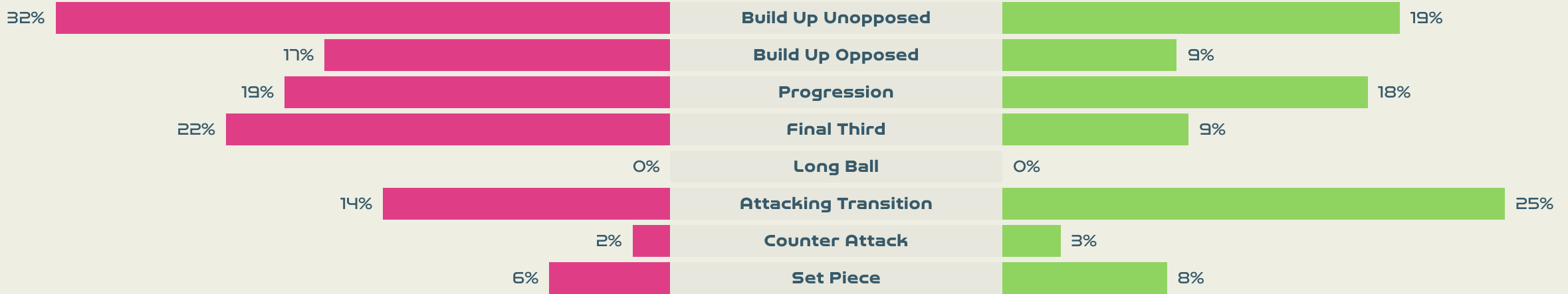
Norway

Phases of Play

Philippines



IN POSSESSION



OUT OF POSSESSION





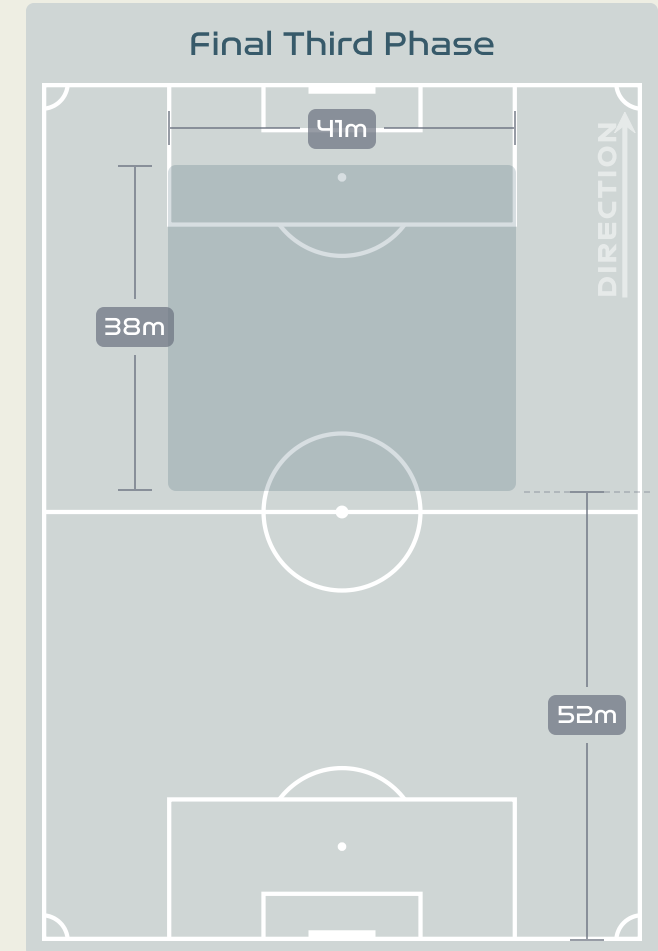
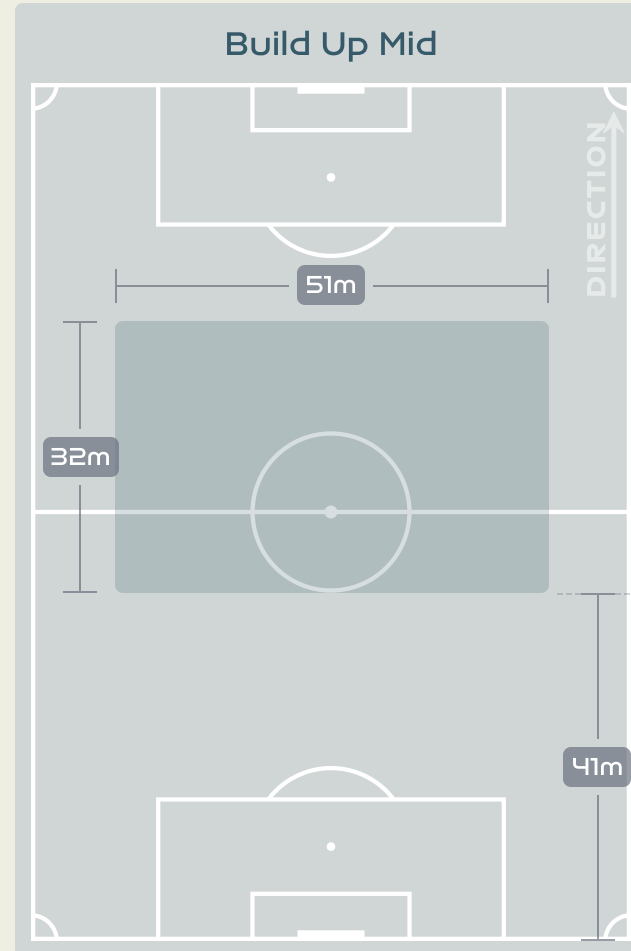
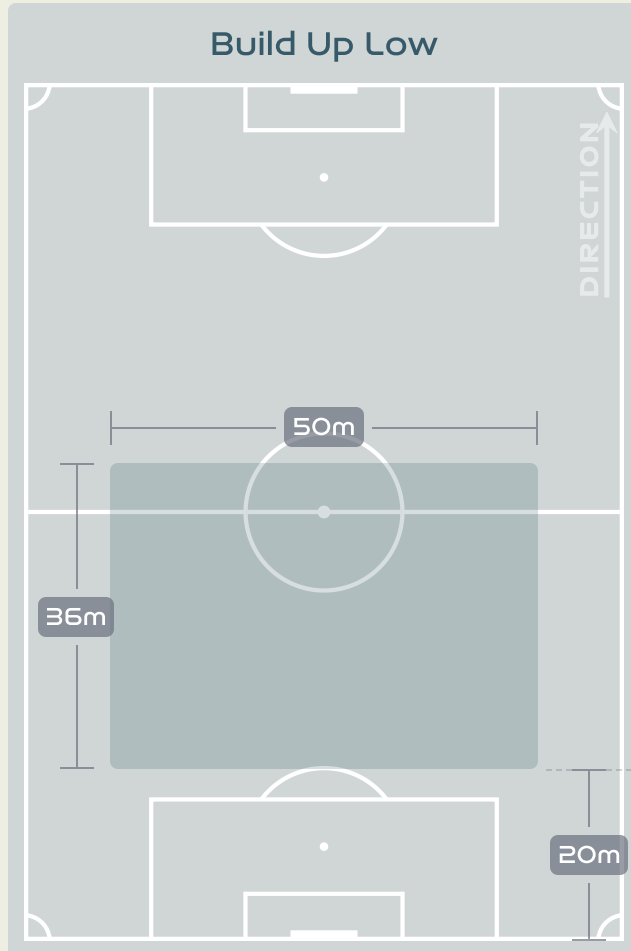
IN POSSESSION



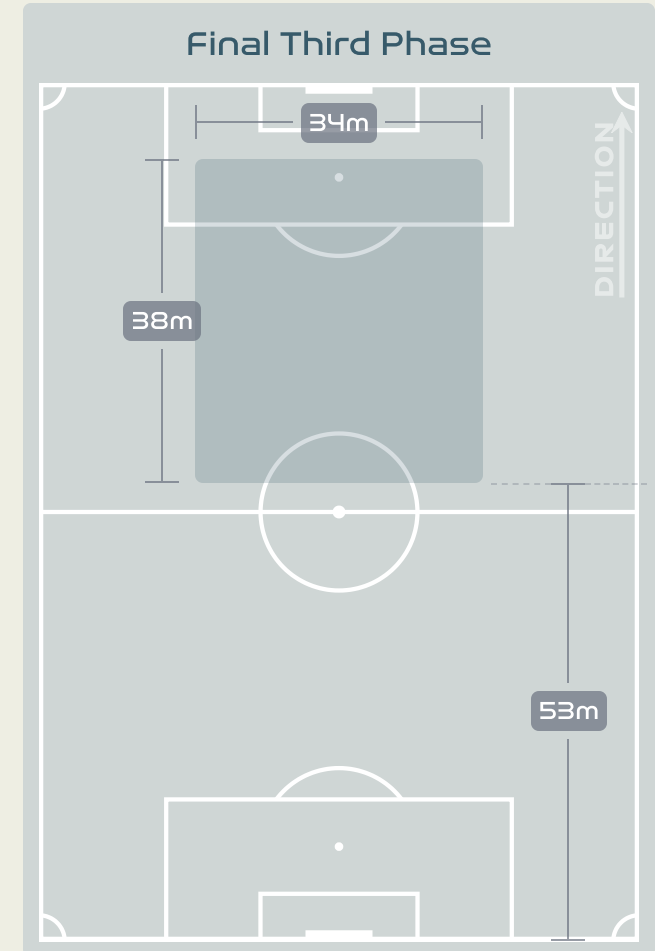
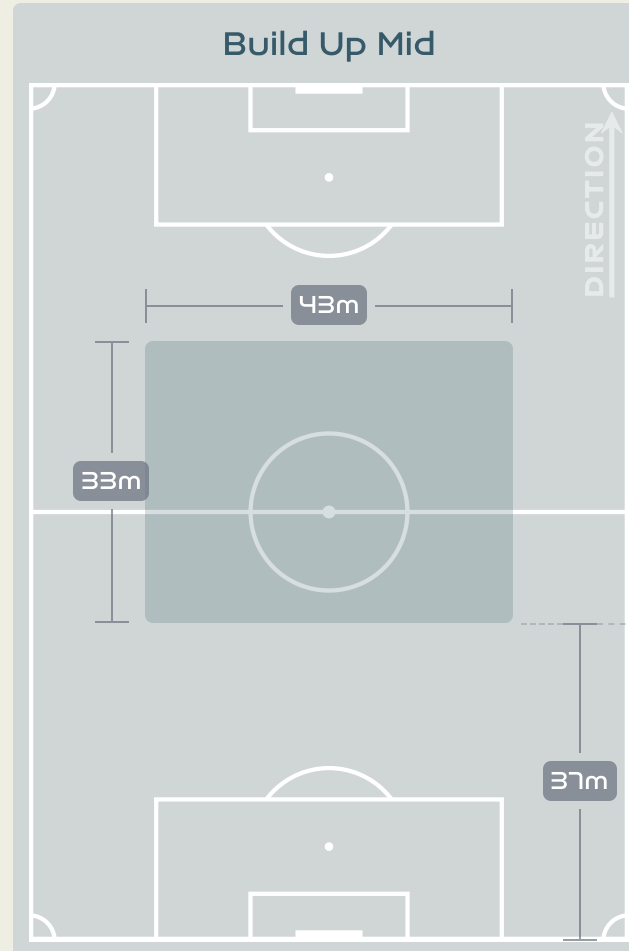
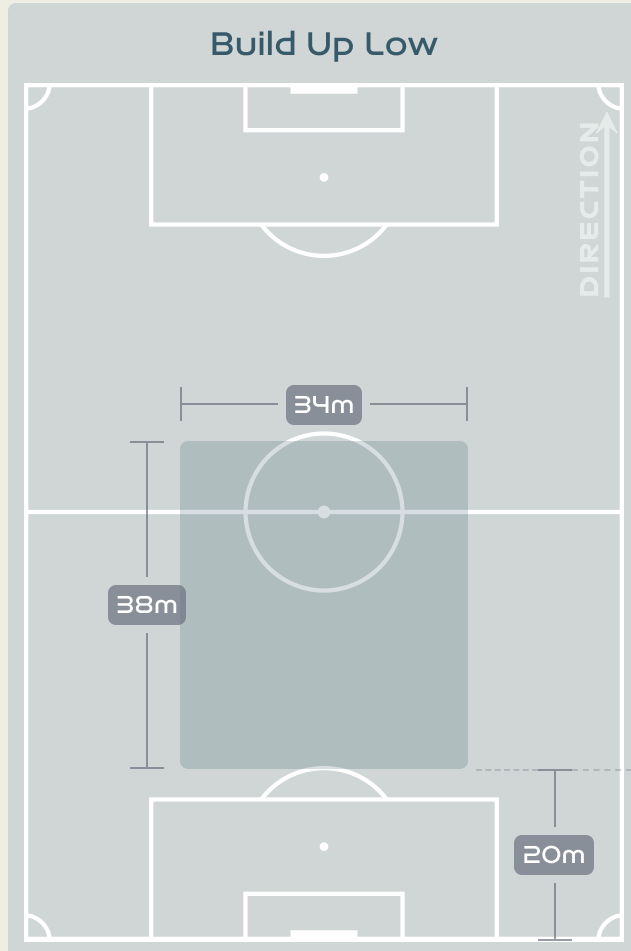
Norway v Philippines



In Possession Line Height & Team Length



In Possession Line Height & Team Length



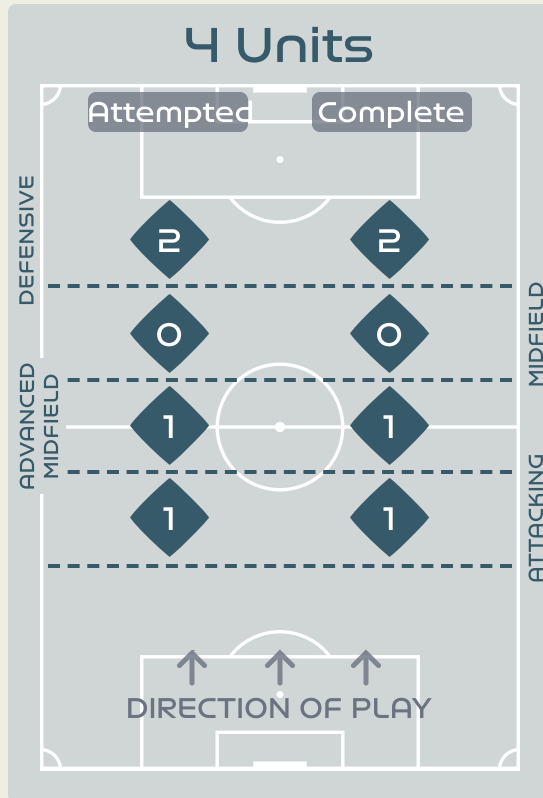
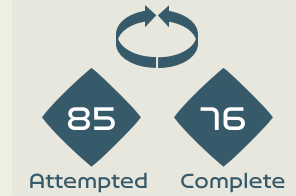
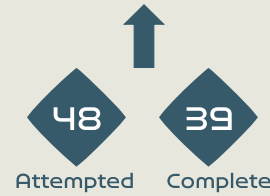
Line Breaks



Norway

Attempted Line Breaks

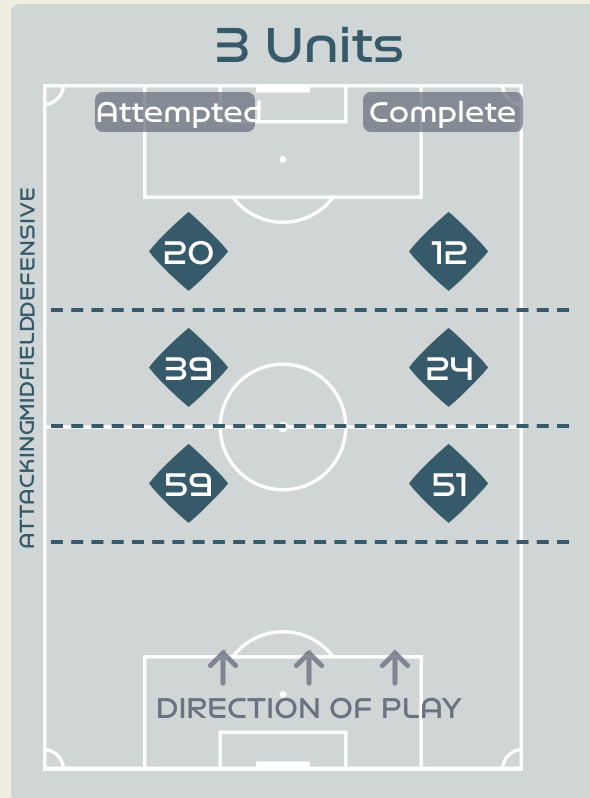
189



Attempted Line Breaks 4

Inside Shape 2

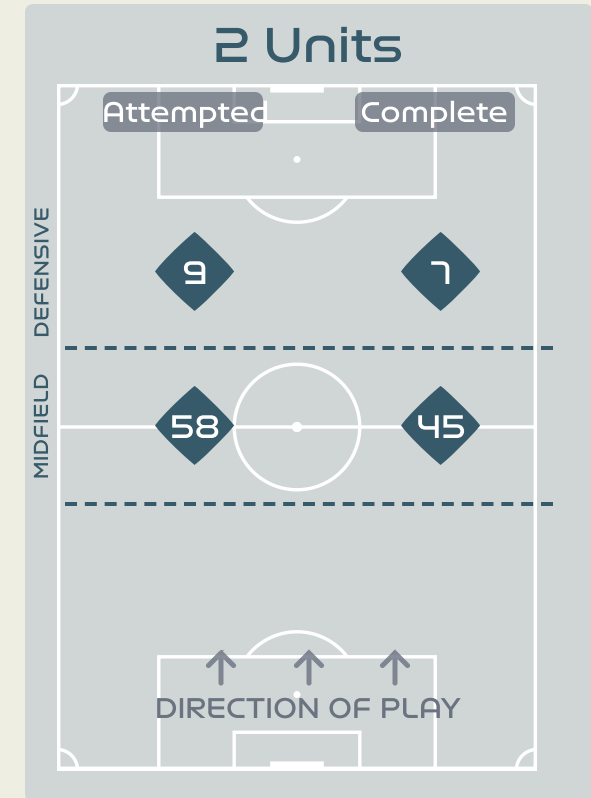
Outside Shape 2



Attempted Line Breaks 118

Inside Shape 70

Outside Shape 48



Attempted Line Breaks 67

Inside Shape 37

Outside Shape 30

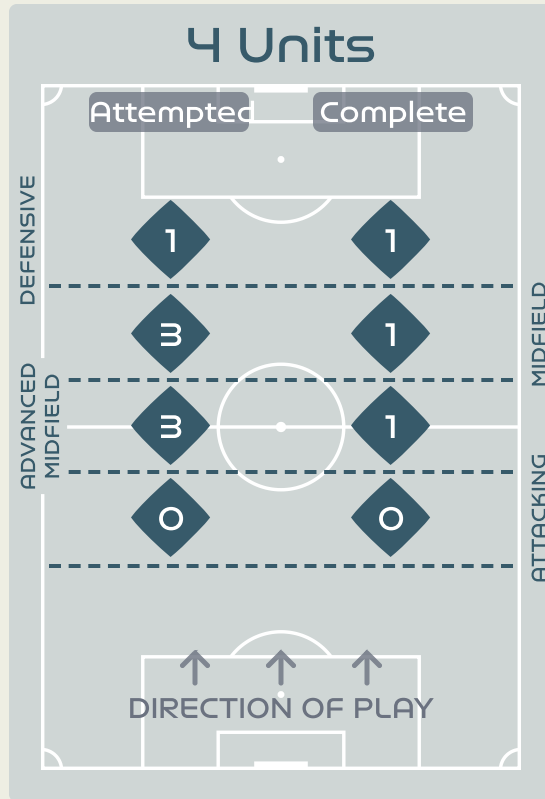
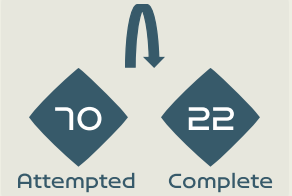
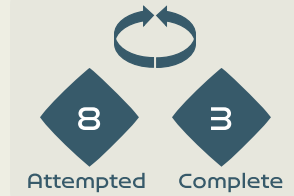
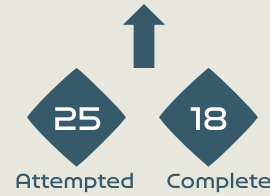
Line Breaks



Philippines

Attempted Line Breaks

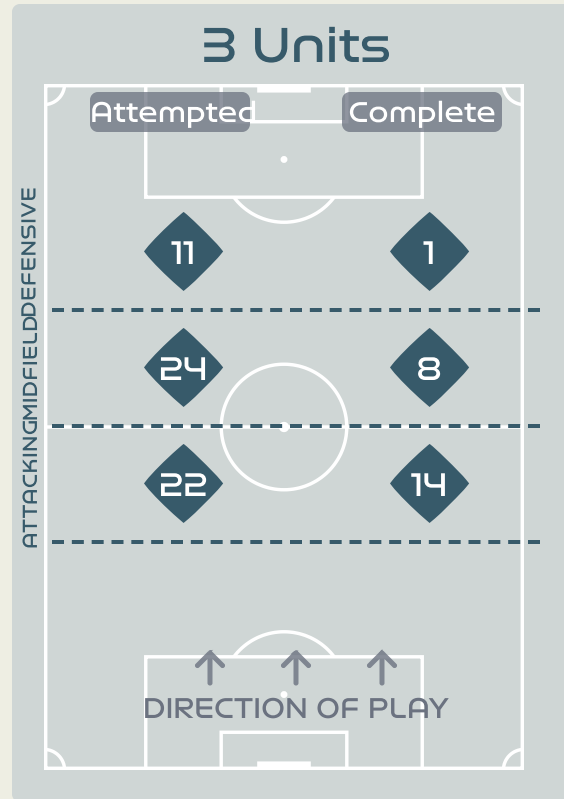
103



Attempted Line Breaks 7

Inside Shape 6

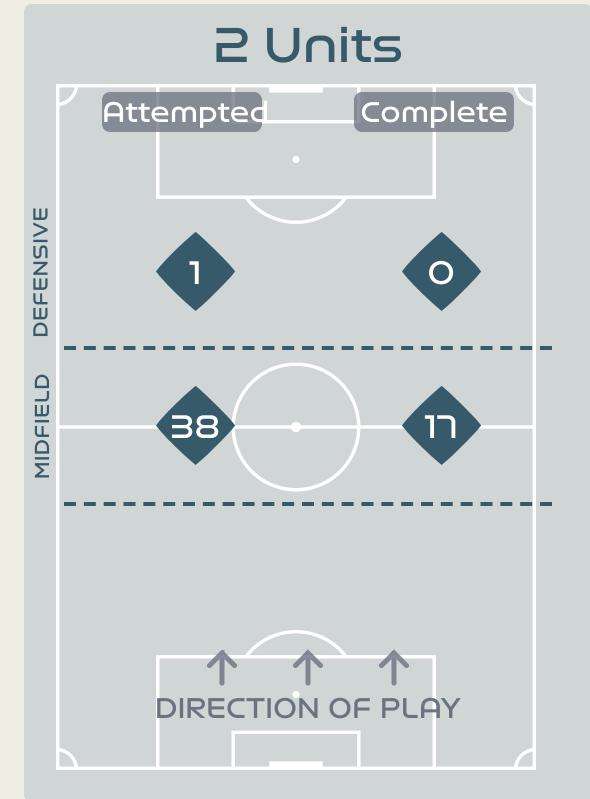
Outside Shape 1



Attempted Line Breaks 57

Inside Shape 49

Outside Shape 8



Attempted Line Breaks 39

Inside Shape 34

Outside Shape 5

Line Breaks



					4 Units				3 Units			2 Units		Direction			Distribution Type		
#	Player	Line Breaks Attempted	Line Breaks Completed	Line Break Completion %	Attacking Line	Attacking Midfield Line	Midfield Line	Defensive Line	Attacking Line	Midfield Line	Defensive Line	Midfield Line	Defensive Line	Through	Around	Over	Pass	Cross	Ball Progression
23	MIKALSEN Aurora	10	5	50%	0	0	0	0	7	1	0	2	0	1	0	9	10	0	0
4	HANSEN Tuva	19	13	68%	0	0	0	0	5	3	1	10	0	4	10	5	19	0	0
6	MJELDE Maren	44	40	90%	0	1	0	0	26	6	0	11	0	10	24	10	43	0	1
8	BOE RISA Vilde	25	19	76%	0	0	0	1	1	8	4	9	2	11	4	10	22	2	1
10	GRAHAM HANSEN Caroline	8	6	75%	0	0	0	0	0	5	3	0	0	1	6	1	5	0	3
11	REITEN Guro	7	4	57%	0	0	0	0	0	2	2	3	0	1	5	1	5	2	0
13	BJELDE Thea	8	5	62%	0	0	0	0	4	1	2	1	0	1	5	2	7	1	0
16	HARVIKEN Mathilde	9	8	88%	1	0	0	0	5	1	0	2	0	4	4	1	9	0	0
18	MAANUM Frida	10	4	40%	0	0	0	0	0	4	3	2	1	4	2	4	9	0	1
20	HAAVI Emilie	7	7	100%	0	0	0	1	0	0	2	2	2	0	5	2	5	1	1
22	ROMAN HAUG Sophie	3	2	66%	0	0	0	0	0	0	1	2	0	1	0	2	2	1	0
2	SONSTEVOLD Anja	17	14	82%	0	0	0	0	4	6	0	7	0	1	13	3	17	0	0
5	BERGSVAND Guro	4	4	100%	0	0	0	0	4	0	0	0	0	0	4	0	4	0	0
7	SYRSTAD ENGEN Ingrid	10	8	80%	0	0	0	0	2	2	0	6	0	5	2	3	10	0	0
9	SAEVIK Karina	6	2	33%	0	0	0	0	1	0	2	1	2	3	0	3	3	2	1
21	JOSENDAL Anna	2	2	100%	0	0	0	0	0	0	0	0	2	1	1	0	0	1	1

Line Breaks



					4 Units				3 Units			2 Units		Direction			Distribution Type		
#	Player	Line Breaks Attempted	Line Breaks Completed	Line Break Completion %	Attacking Line	Attacking Midfield Line	Midfield Line	Defensive Line	Attacking Line	Midfield Line	Defensive Line	Midfield Line	Defensive Line	Through	Around	Over	Pass	Cross	Ball Progression
1	McDANIEL Olivia	29	9	31%	0	1	2	0	5	7	2	12	0	2	0	27	29	0	0
3	COWART Jessika	13	8	61%	0	2	0	0	5	2	0	4	0	7	0	6	10	0	3
4	SAWICKI Jaclyn	5	3	60%	0	0	0	0	1	2	0	2	0	2	0	3	5	0	0
5	LONG Hali	12	7	58%	0	0	1	0	3	2	1	5	0	4	3	5	11	0	1
7	BOLDEN Sarina	2	0	0%	0	0	0	0	0	0	1	0	1	1	0	1	2	0	0
8	EGGESVIK Sara	10	2	20%	0	0	0	0	1	5	3	1	0	2	3	5	10	0	0
9	FLANIGAN Isabella	0	0	0%	0	0	0	0	0	0	0	0	0	0	0	0	0	0	0
13	BEARD Angela	13	4	30%	0	0	0	0	2	4	0	7	0	1	0	12	12	1	0
17	BARKER Alicia	3	2	66%	0	0	0	0	1	0	1	1	0	1	2	0	3	0	0
20	QUEZADA Quinley	2	1	50%	0	0	0	0	0	1	0	1	0	1	0	1	1	0	1
21	GUILLOU Katrina	1	0	0%	0	0	0	0	0	0	0	1	0	0	0	1	1	0	0
10	McDANIEL Chandler	0	0	0%	0	0	0	0	0	0	0	0	0	0	0	0	0	0	0
12	BUGAY Ryley	0	0	0%	0	0	0	0	0	0	0	0	0	0	0	0	0	0	0
14	SERRANO Meryll	5	3	60%	0	0	0	0	1	1	1	2	0	2	0	3	5	0	0
16	HARRISON Sofia	0	0	0%	0	0	0	0	0	0	0	0	0	0	0	0	0	0	0
19	RANDLE Dominique	8	4	50%	0	0	0	1	3	0	2	2	0	2	0	6	8	0	0

Passing Networks



#	Passes From ↓ to →	MIKALSEN Aurora	HANSEN Tuva	MJELDE Maren	BOE RISA Vilde	GRAHAM HANSEN Caroline	REITEN Guro	BJELDE Thea	HARVIKEN Mathilde	MAANUM Frida	HAAVI Emilie	ROMAN HAUG Sophie	SONSTEVOLD Anja	BERGSVAND Guro	SYRSTAD ENGEN Ingrid	SAEVIK Karina	JOSENDAL Anna
23	MIKALSEN Aurora		2	5	1	0	0	0	4	0	0	0	2	2	1	0	0
4	HANSEN Tuva	2		3	7	1	8	0	15	1	7	2	2	4	2	1	0
6	MJELDE Maren	3	4		19	3	1	17	27	15	0	5	8	3	4	1	0
8	BOE RISA Vilde	1	9	14		4	3	6	4	7	6	4	4	2	5	3	3
10	GRAHAM HANSEN Caroline	0	2	3	3		3	5	0	3	1	1	3	0	0	0	0
11	REITEN Guro	0	6	0	2	4		0	1	0	2	1	1	0	1	3	0
13	BJELDE Thea	0	0	13	3	4	0		0	5	1	0	0	0	0	0	0
16	HARVIKEN Mathilde	3	14	30	8	0	2	0		0	0	0	0	0	1	0	0
18	MAANUM Frida	2	1	5	8	9	3	5	0		0	0	0	0	0	0	0
20	HAAVI Emilie	0	7	0	0	1	1	0	1	1		0	0	0	0	0	0
22	ROMAN HAUG Sophie	0	0	1	1	2	1	1	0	2	1		0	0	0	3	0
2	SONSTEVOLD Anja	0	0	4	6	1	0	0	0	0	0	1		1	5	1	8
5	BERGSVAND Guro	6	5	4	1	0	0	0	0	0	0	0	0		2	0	0
7	SYRSTAD ENGEN Ingrid	0	2	1	9	0	2	0	0	0	0	0	2	4		3	0
9	SAEVIK Karina	0	5	0	0	1	2	0	0	0	0	0	2	0	0		1
21	JOSENDAL Anna	0	0	0	2	0	0	0	0	0	0	0	5	0	0	0	

Top 5 Player to Player Passers		
Player	Passed To	% of Total Team Passes
HARVIKEN Mathilde	MJELDE Maren	5.7%
MJELDE Maren	HARVIKEN Mathilde	5.1%
MJELDE Maren	BOE RISA Vilde	3.6%
MJELDE Maren	BJELDE Thea	3.2%
HANSEN Tuva	HARVIKEN Mathilde	2.8%

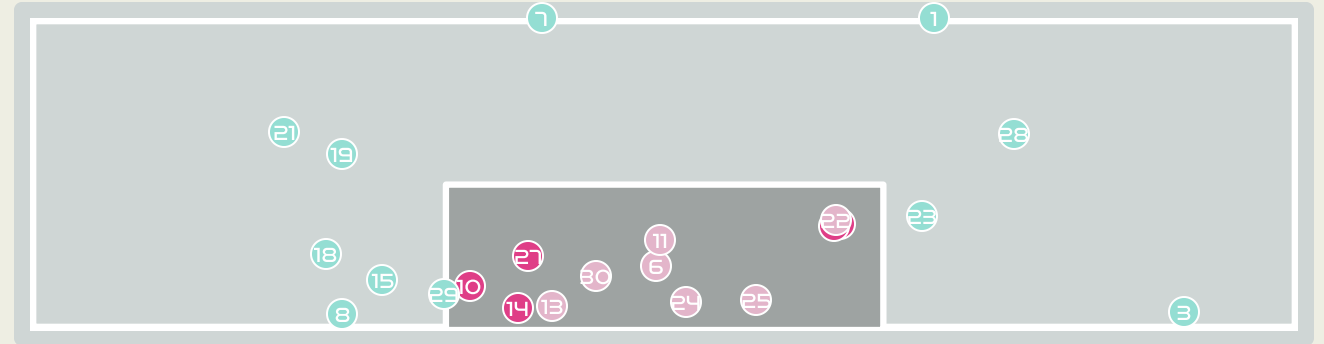
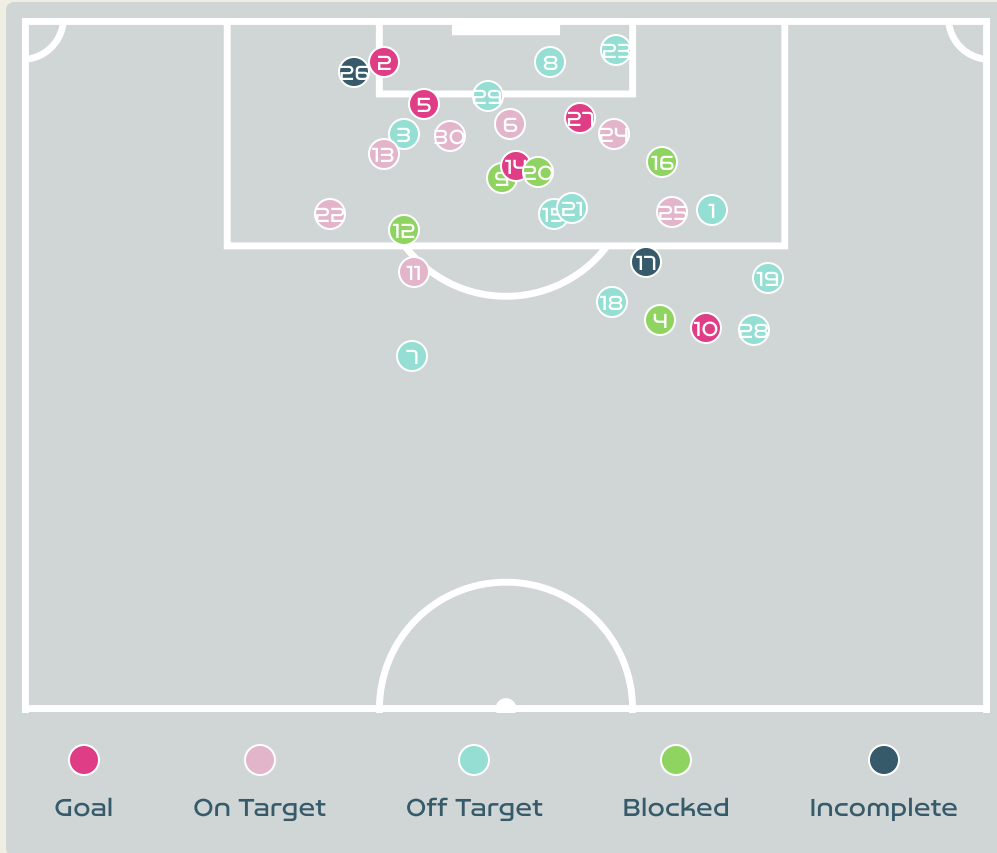
Passing Networks








#	Passes From ↓ to →	McDANIEL Olivia	COWART Jessika	SAWICKI Jaclyn	LONG Hali	BOLDEN Sarina	EGGESVIK Sara	FLANIGAN Isabella	BEARD Angela	BARKER Alicia	QUEZADA Quinley	GUILLOU Katrina	McDANIEL Chandler	BUGAY Ryley	SERRANO Meryll	HARRISON Sofia	RANDLE Dominique
1	McDANIEL Olivia		3	0	2	2	0	0	0	0	2	0	0	0	0	1	0
3	COWART Jessika	3		2	5	2	0	0	4	0	1	3	0	0	1	0	0
4	SAWICKI Jaclyn	0	3		3	1	1	1	5	0	2	1	0	0	0	0	0
5	LONG Hali	4	4	1		1	0	0	0	1	3	2	0	0	0	0	0
7	BOLDEN Sarina	1	0	5	0		3	0	0	0	2	0	0	0	0	1	0
8	EGGESVIK Sara	0	2	1	5	0		0	3	2	4	1	0	0	0	0	0
9	FLANIGAN Isabella	0	0	0	0	0	0		0	0	0	0	0	0	0	0	0
13	BEARD Angela	0	5	2	2	0	3	0		0	0	0	0	0	0	0	0
17	BARKER Alicia	0	0	0	0	0	0	1	0		1	0	0	0	0	0	0
20	QUEZADA Quinley	0	1	1	1	1	3	0	0	2		2	1	0	0	0	0
21	GUILLOU Katrina	0	2	1	1	0	1	0	2	0	0		0	0	0	0	0
10	McDANIEL Chandler	0	0	0	0	0	2	0	0	0	0	0		0	0	0	1
12	BUGAY Ryley	0	0	0	0	0	0	0	1	0	0	0	0		0	0	0
14	SERRANO Meryll	0	0	0	0	0	3	0	0	0	0	0	0	0		0	0
16	HARRISON Sofia	0	0	0	0	0	1	0	0	0	0	0	0	0	0		0
19	RANDLE Dominique	0	0	0	0	1	0	0	0	0	0	1	0	0	0	0	

Top 5 Player to Player Passers		
Player	Passed To	% of Total Team Passes
COWART Jessika	LONG Hali	3.6%
SAWICKI Jaclyn	BEARD Angela	3.6%
BOLDEN Sarina	SAWICKI Jaclyn	3.6%
EGGESVIK Sara	LONG Hali	3.6%
BEARD Angela	COWART Jessika	3.6%

Attempts at Goal



Key	Outcome	Shots
	Goals	5
	On Target	7
	Off Target	11
	Blocked	5
	Incomplete	2

Attempts at Goal



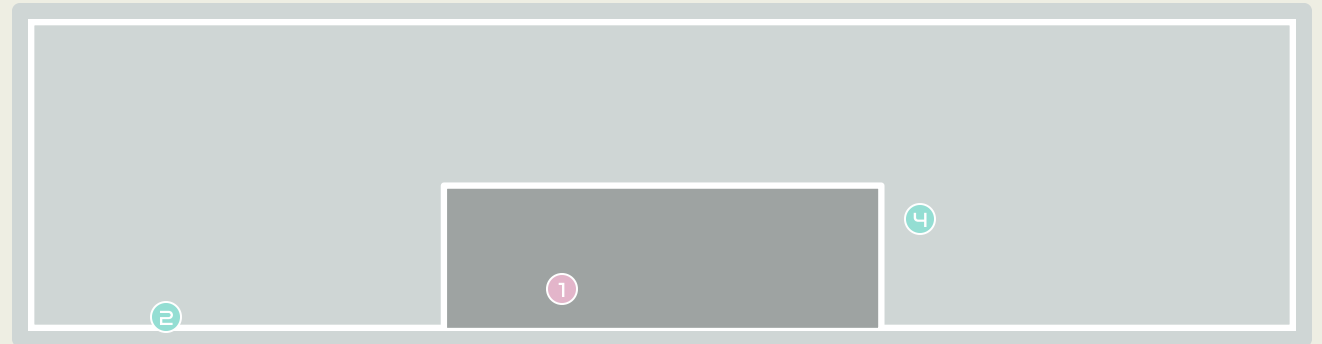
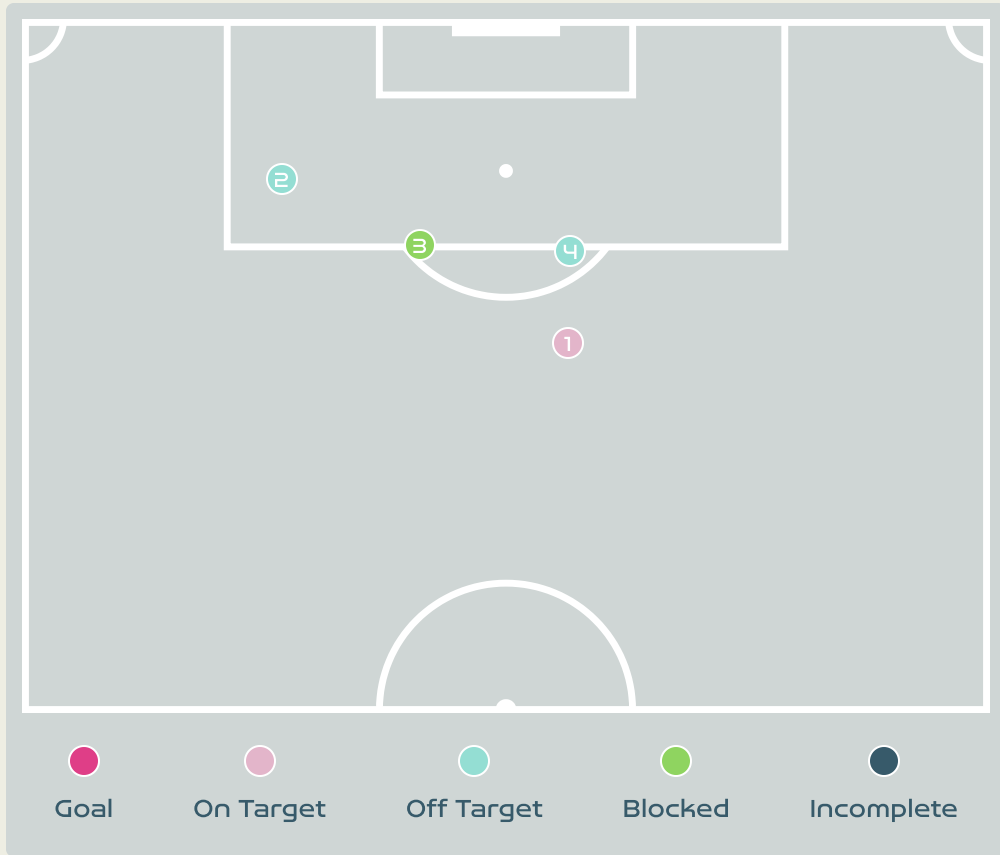
Time	Player	Outcome	Body Part	Delivery Type
3	10 GRAHAM HANSEN Caroline	Deflected Off Target - Defensive Event	Left Foot	Pass
5	22 ROMAN HAUG Sophie	On Target - Goal	Left Foot	Cross
7	4 HANSEN Tuva	Off Target	Right Foot	Pass
13	10 GRAHAM HANSEN Caroline	Incomplete - Blocked	Right Foot	Loose Ball
16	22 ROMAN HAUG Sophie	On Target - Goal	Head	Cross
23	22 ROMAN HAUG Sophie	On Target - Saved	Head	Cross
24	4 HANSEN Tuva	Off Target	Left Foot	Loose Ball
28	22 ROMAN HAUG Sophie	Deflected Off Target - Defensive Event	Left Foot	Cross
30	10 GRAHAM HANSEN Caroline	Incomplete - Blocked	Right Foot	Loose Ball
30	10 GRAHAM HANSEN Caroline	On Target - Goal	Right Foot	Ball Progression
33	20 HAAVI Emilie	On Target - Saved	Right Foot	Loose Ball
35	20 HAAVI Emilie	Incomplete - Blocked	Left Foot	Other
48	20 HAAVI Emilie	On Target - Saved	Left Foot	Cross
52	11 REITEN Guro	On Target - Goal	Left Foot	Penalty
54	11 REITEN Guro	Off Target	Left Foot	Pass
59	10 GRAHAM HANSEN Caroline	Incomplete - Blocked	Left Foot	Loose Ball
59	18 MAANUM Frida	Incomplete	Right Foot	Loose Ball






Attempts at Goal



Time	Player	Outcome	Body Part	Delivery Type
59	18 MAANUM Frida	Off Target	Right Foot	Loose Ball
68	10 GRAHAM HANSEN Caroline	Off Target	Right Foot	Loose Ball
72	7 SYRSTAD ENGEN Ingrid	Incomplete - Blocked	Right Foot	Loose Ball
73	10 GRAHAM HANSEN Caroline	Deflected Off Target - Defensive Event	Left Foot	Pass
82	11 REITEN Guro	On Target - Saved	Right Foot	Pass
82	7 SYRSTAD ENGEN Ingrid	Off Target	Head	Corner
88	21 JOSENDAL Anna	On Target - Saved	Left Foot	Pass
92	21 JOSENDAL Anna	On Target - Saved	Left Foot	Pass
93	11 REITEN Guro	Incomplete - Player On Ball Error	Left Foot	Cross
94	22 ROMAN HAUG Sophie	On Target - Goal	Head	Cross
96	8 BOE RISA Vilde	Off Target	Right Foot	Other
99	22 ROMAN HAUG Sophie	Off Target	Right Foot	Cross
99	11 REITEN Guro	On Target - Saved	Left Foot	Other

Attempts at Goal



Key	Outcome	Shots
	Goals	0
	On Target	1
	Off Target	2
	Blocked	1
	Incomplete	0

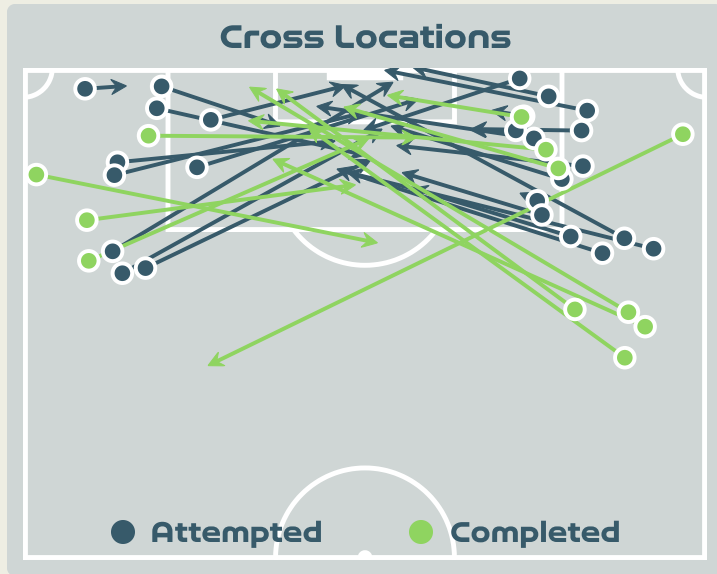
Attempts at Goal

Philippines

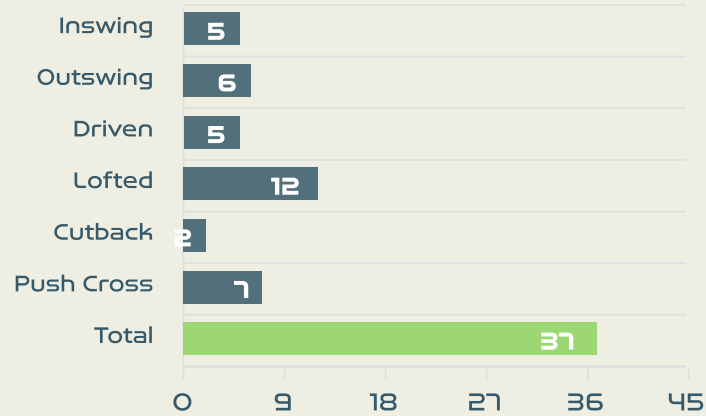


Time	Player	Outcome	Body Part	Delivery Type
38	13 BEARD Angela	On Target - Saved	Left Foot	Pass
56	13 BEARD Angela	Off Target	Left Foot	Loose Ball
58	21 GUILLOU Katrina	Incomplete - Blocked	Right Foot	Pass
97	8 EGGESVIK Sara	Off Target - Saved	Right Foot	Pass

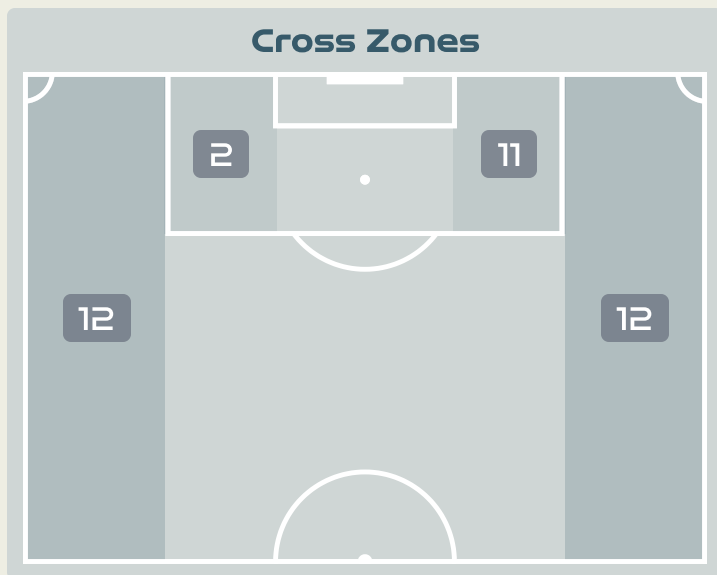
Crosses (Open Play)



Delivery Type



#	Player	Inswing	Outswing	Driven	Lofted	Cutback	Push Cross	Total Attempted
23	MIKALSEN Aurora	0	0	0	0	0	0	0
4	HANSEN Tuva	0	3	0	0	1	0	4
6	MJELDE Maren	0	0	0	0	0	0	0
8	BOE RISA Vilde	0	1	0	1	0	0	2
10	GRAHAM HANSEN Caroline	0	0	3	3	0	2	8
11	REITEN Guro	1	1	0	2	0	1	5
13	BJELDE Thea	0	1	0	1	0	1	3
16	HARVIKEN Mathilde	0	0	0	0	0	0	0
18	MAANUM Frida	0	0	0	1	0	3	4
20	HAABI Emilie	3	0	0	1	0	0	4
22	ROMAN HAUG Sophie	0	0	0	1	0	0	1
2	SONSTEVOLD Anja	0	0	0	1	0	0	1
5	BERGSVAND Guro	0	0	0	0	0	0	0
7	SYRSTAD ENGEN Ingrid	0	0	0	0	0	0	0
9	SAEVIK Karina	1	0	1	0	0	0	2
21	JOSENDAL Anna	0	0	1	1	1	0	3



Attempted

37

Completed

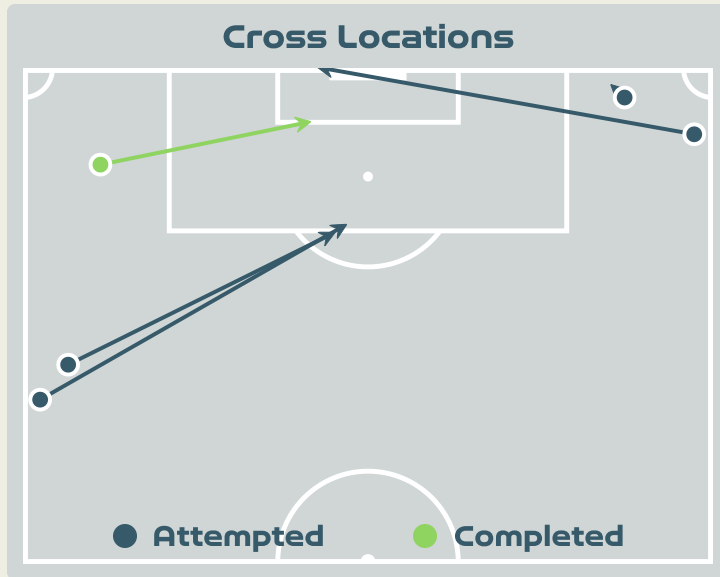
12

Most Crosses Attempted

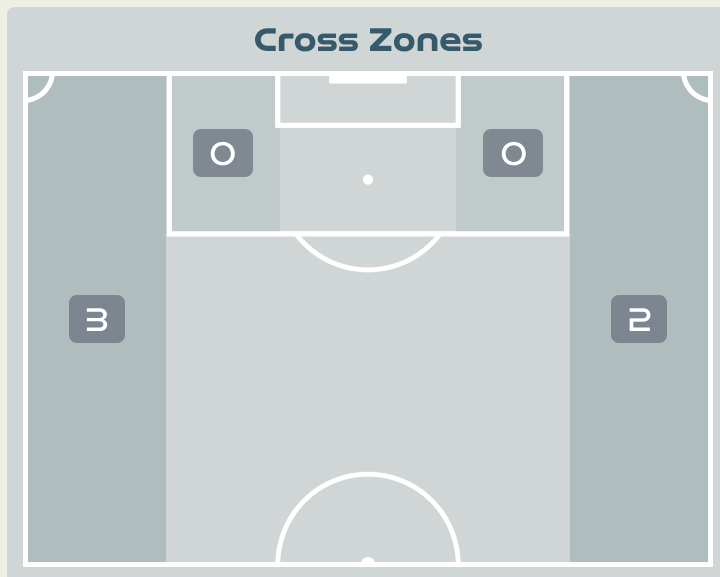
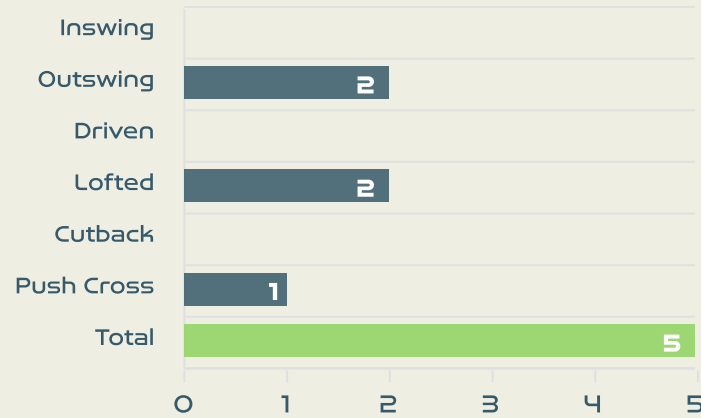
8

GRAHAM HANSEN Caroline
RIGHT WINGER

Crosses (Open Play)



Delivery Type



Attempted

5

Completed

1

Most Crosses Attempted

2

BEARD Angela
LEFT BACK

#	Player	Inswing	Outswing	Driven	Lofted	Cutback	Push Cross	Total Attempted
1	McDANIEL Olivia	0	0	0	0	0	0	0
3	COWART Jessika	0	0	0	0	0	0	0
4	SAWICKI Jaclyn	0	0	0	0	0	0	0
5	LONG Hali	0	0	0	0	0	0	0
7	BOLDEN Sarina	0	0	0	0	0	1	1
8	EGGESVIK Sara	0	0	0	0	0	0	0
9	FLANIGAN Isabella	0	0	0	0	0	0	0
13	BEARD Angela	0	1	0	1	0	0	2
17	BARKER Alicia	0	0	0	0	0	0	0
20	QUEZADA Quinley	0	0	0	0	0	0	0
21	GUILLOU Katrina	0	0	0	0	0	0	0
10	McDANIEL Chandler	0	0	0	0	0	0	0
12	BUGAY Ryley	0	0	0	0	0	0	0
14	SERRANO Meryll	0	0	0	0	0	0	0
16	HARRISON Sofia	0	1	0	0	0	0	1
19	RANDLE Dominique	0	0	0	1	0	0	1

Offering to Receive

544

Total Offers Made

188

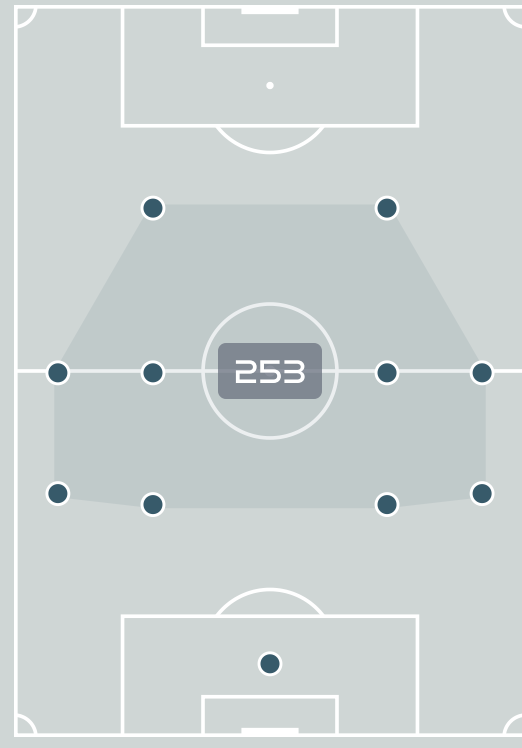
Total Offers Received

Most Offers

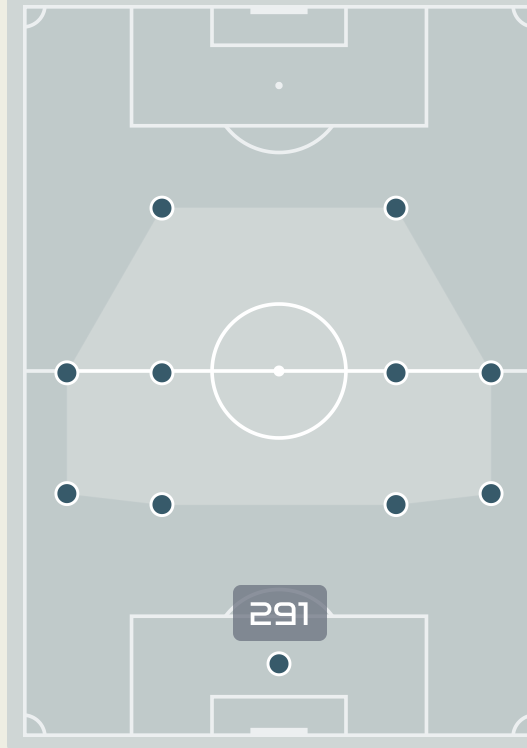
99

REITEN Guro
LEFT CENTRE MIDFIELD

Offers Made Inside Shape



Offers Made Outside Shape



244

Offers Made in Final Third

227

Offers Made in Middle Third

73

Offers Made in Defensive Third

#	Player	Offers Made	Offers Received	% Made & Received
23	MIKALSEN Aurora	10	3	30%
4	HANSEN Tuva	60	31	51.7%
6	MJELDE Maren	28	7	25%
8	BOE RISA Vilde	87	31	35.6%
10	GRAHAM HANSEN Caroline	33	17	51.5%
11	REITEN Guro	99	22	22.2%
13	BJELDE Thea	31	9	29%
16	HARVIKEN Mathilde	2	0	0%
18	MAANUM Frida	43	18	41.9%
20	HAABI Emilie	35	12	34.3%
22	ROMAN HAUG Sophie	29	7	24.1%
2	SONSTEVOLD Anja	11	7	63.6%
5	BERGSVAND Guro	2	0	0%
7	SYRSTAD ENGEN Ingrid	30	7	23.3%
9	SAEVIK Karina	25	7	28%
21	JOSENDAL Anna	19	10	52.6%



Offering to Receive

233

Total Offers Made

53

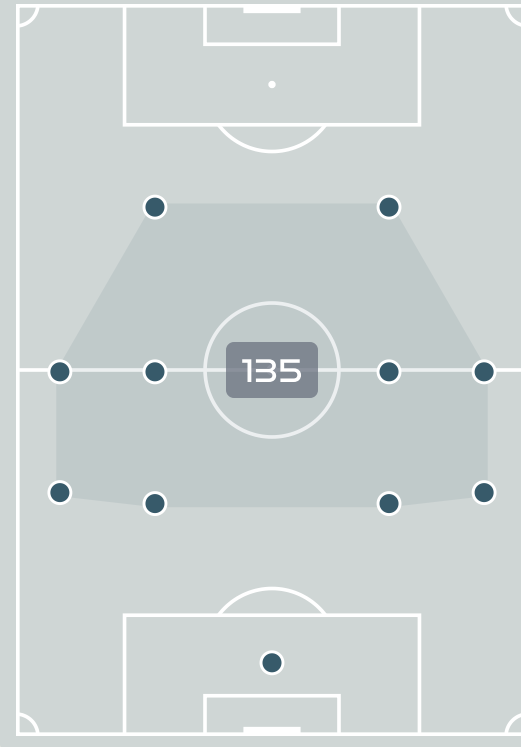
Total Offers Received

Most Offers

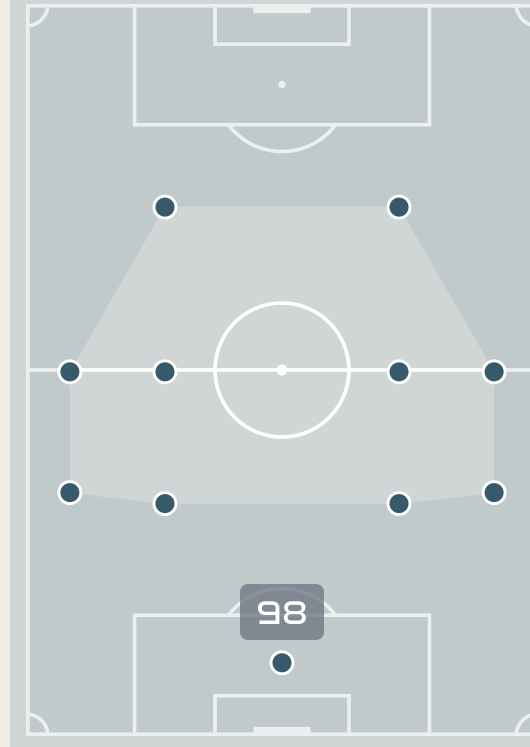
49

GUILLOU Katrina
LEFT MIDFIELD

Offers Made Inside Shape



Offers Made Outside Shape



101

Offers Made in Final Third

105

Offers Made in Middle Third

27

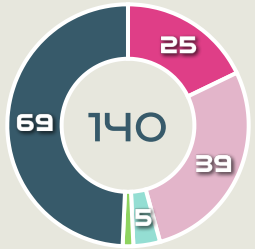
Offers Made in Defensive Third

#	Player	Offers Made	Offers Received	% Made & Received
1	McDANIEL Olivia	4	3	75%
3	COWART Jessika	3	0	0%
4	SAWICKI Jaclyn	16	7	43.8%
5	LONG Hali	4	0	0%
7	BOLDEN Sarina	22	5	22.7%
8	EGGESVIK Sara	17	7	41.2%
9	FLANIGAN Isabella	31	3	9.7%
13	BEARD Angela	17	3	17.6%
17	BARKER Alicia	8	2	25%
20	QUEZADA Quinley	40	13	32.5%
21	GUILLOU Katrina	49	7	14.3%
10	McDANIEL Chandler	8	2	25%
12	BUGAY Ryley	0	0	0%
14	SERRANO Meryll	5	0	0%
16	HARRISON Sofia	2	1	50%
19	RANDLE Dominique	7	0	0%

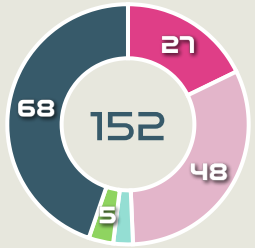
Movement to Receive

Movement Types by Phase

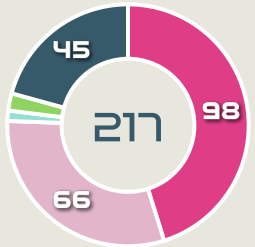
Final Third Phase



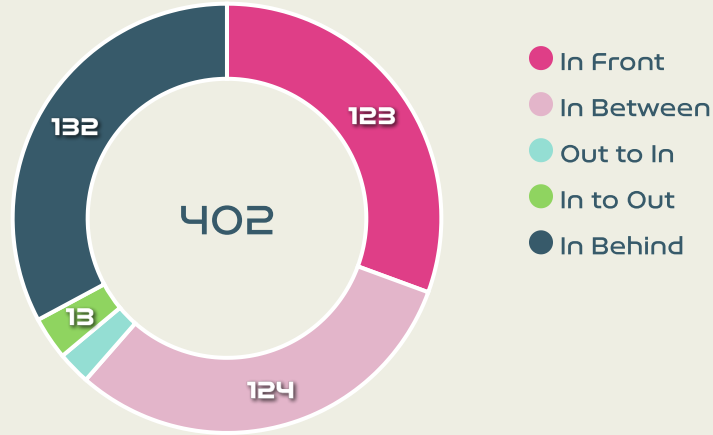
Progression Phase



Build Up Phase



All Movement Types

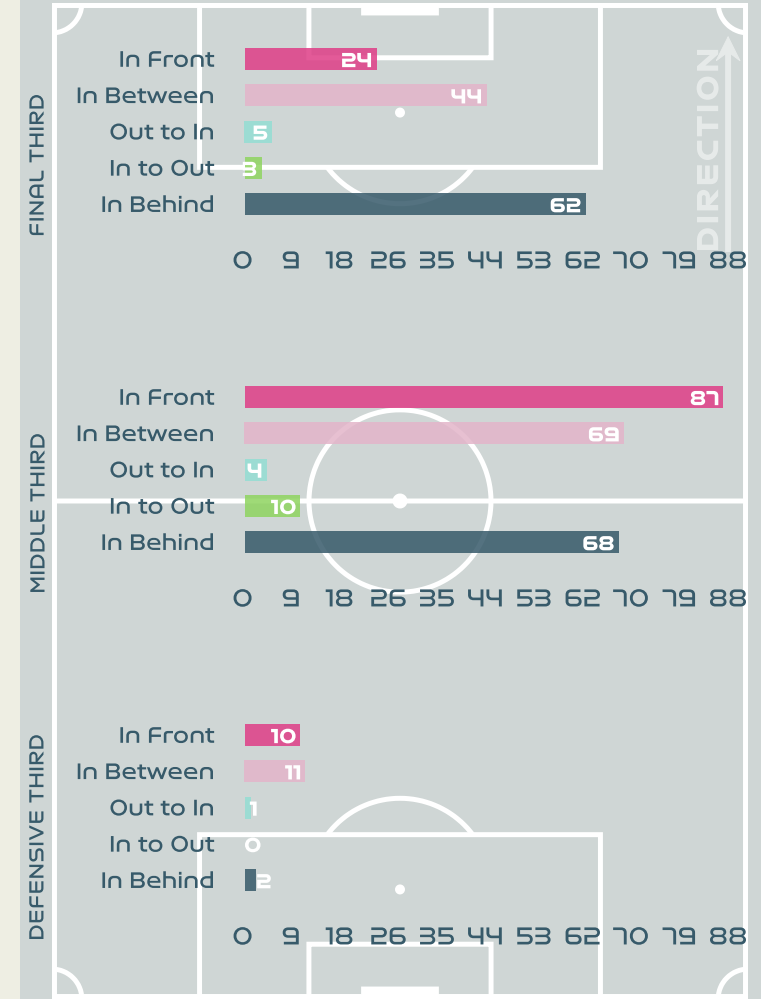


- In Front
- In Between
- Out to In
- In to Out
- In Behind

Top Ranked Players

Type	Player	Movements
In Front	8 BOE RISA Vilde	31
In Between	8 BOE RISA Vilde	44
Out to In	8 BOE RISA Vilde	2
In to Out	18 MAANUM Frida	4
In Behind	11 REITEN Guro	47

Movement Types Pitch Third

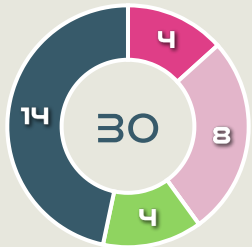




Movement to Receive

Movement Types by Phase

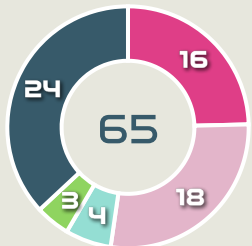
Final Third Phase



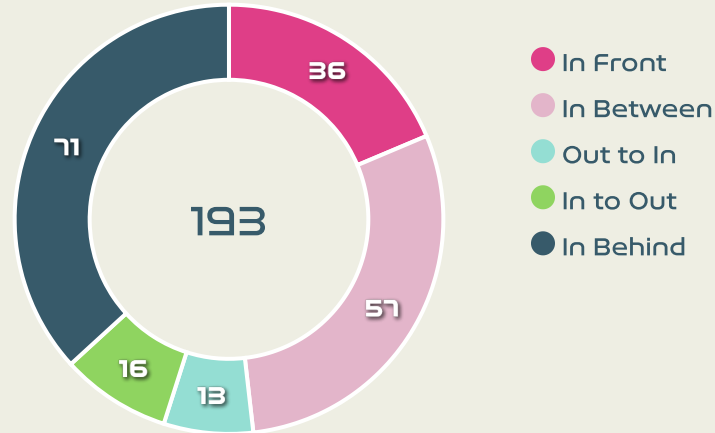
Progression Phase



Build Up Phase



All Movement Types

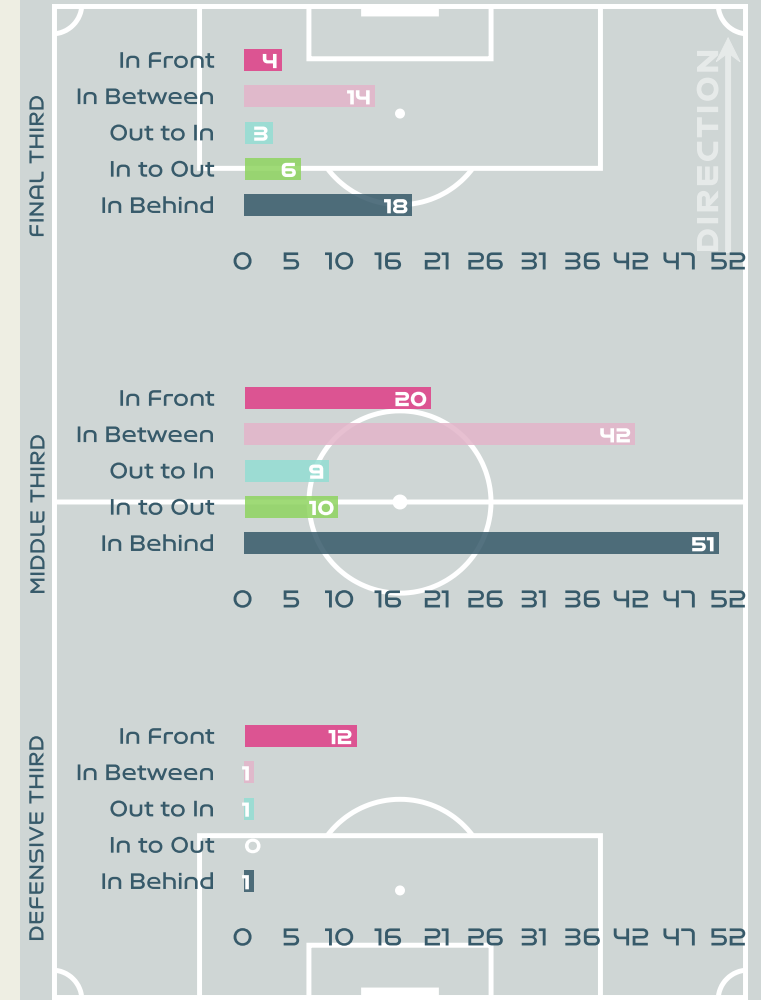


- In Front
- In Between
- Out to In
- In to Out
- In Behind

Top Ranked Players

Type	Player	Movements
In Front	4 SAWICKI Jaclyn	9
In Between	20 QUEZADA Quinley	18
Out to In	20 QUEZADA Quinley	5
In to Out	9 FLANIGAN Isabella	4
In Behind	21 GUILLOU Katrina	28

Movement Types Pitch Third





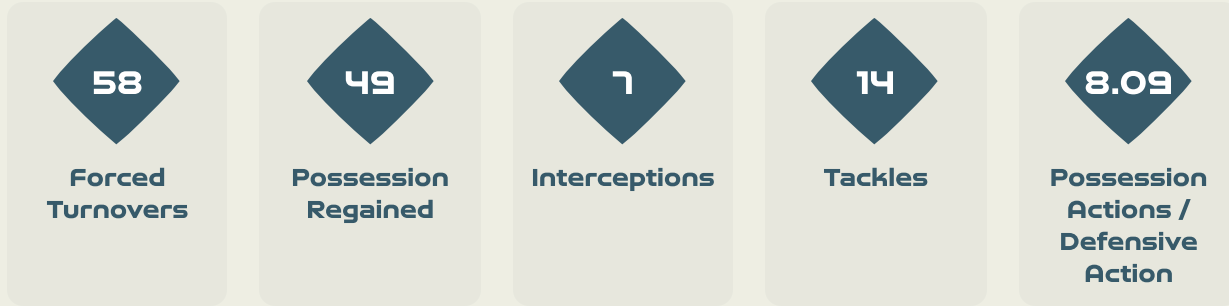
OUT OF POSSESSION



Norway v Philippines



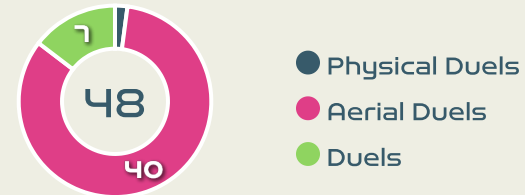
Defensive Actions



Blocks



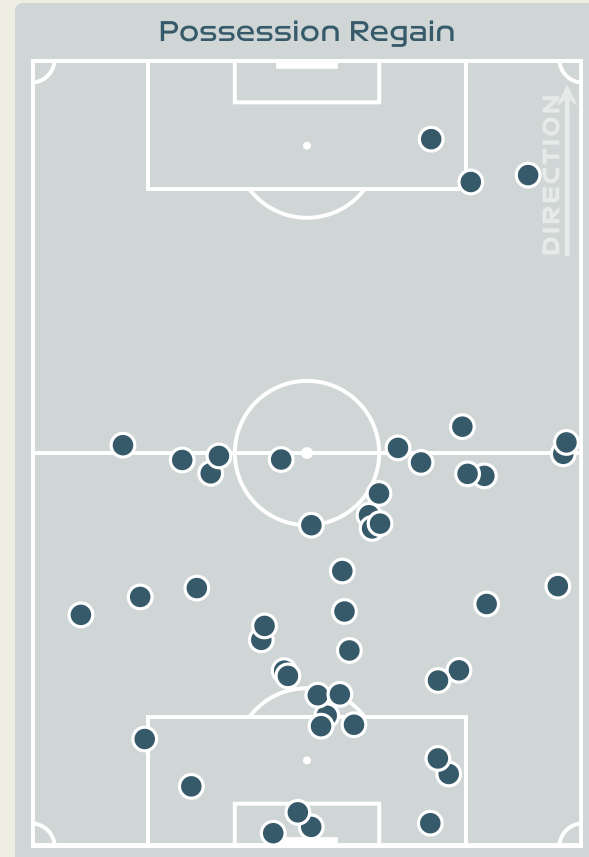
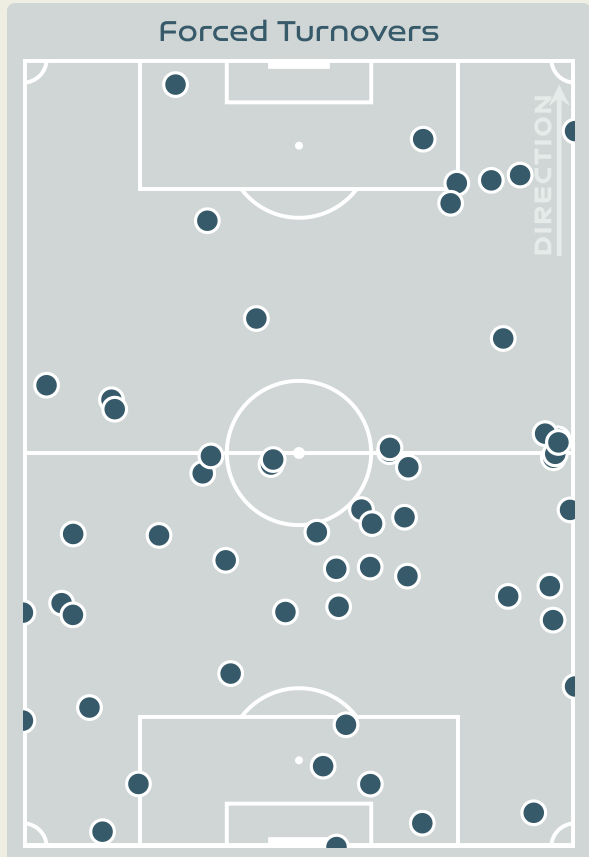
Possession Contests



Most Possession Regains

9
HARVIKEN Mathilde
LEFT CENTRE BACK

#	Player	Total Possession Regains
23	MIKALSEN Aurora	4
4	HANSEN Tuva	0
6	MJELDE Maren	7
8	BOE RISA Vilde	6
10	GRAHAM HANSEN Caroline	3
11	REITEN Guro	0
13	BJELDE Thea	7
16	HARVIKEN Mathilde	9
18	MAANUM Frida	2
20	HAABI Emilie	1
22	ROMAN HAUG Sophie	1
2	SONSTEVOLD Anja	1
5	BERGSVAND Guro	2
7	SYRSTAD ENGEN Ingrid	3
9	SAEVIK Karina	1
21	JOSENDAL Anna	2



Defensive Actions

82

Forced Turnovers

55

Possession Regained

7

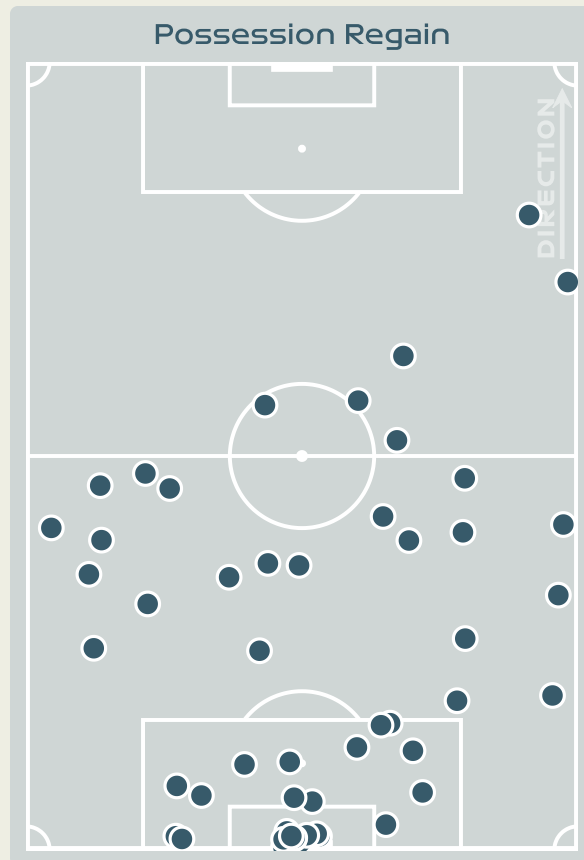
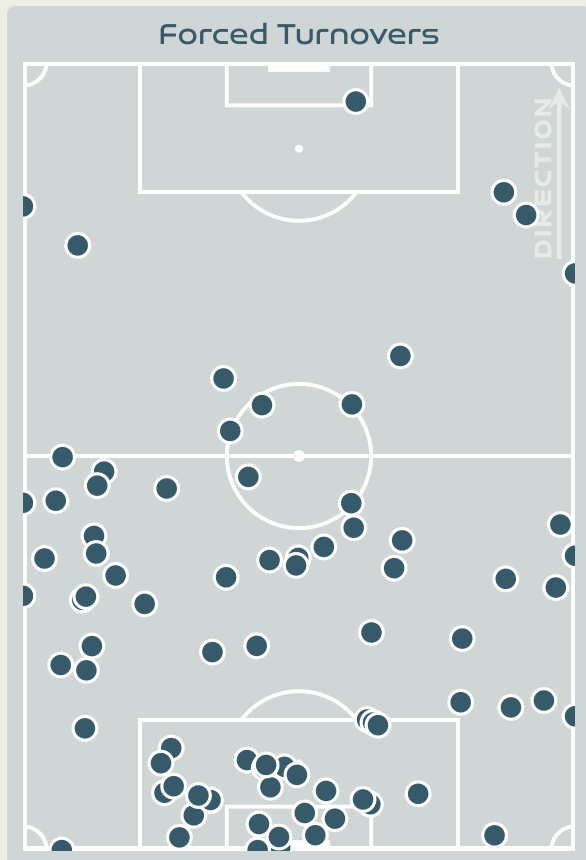
Interceptions

22

Tackles

1.82

Possession Actions / Defensive Action



Blocks



Possession Contests



Most Possession Regains

18

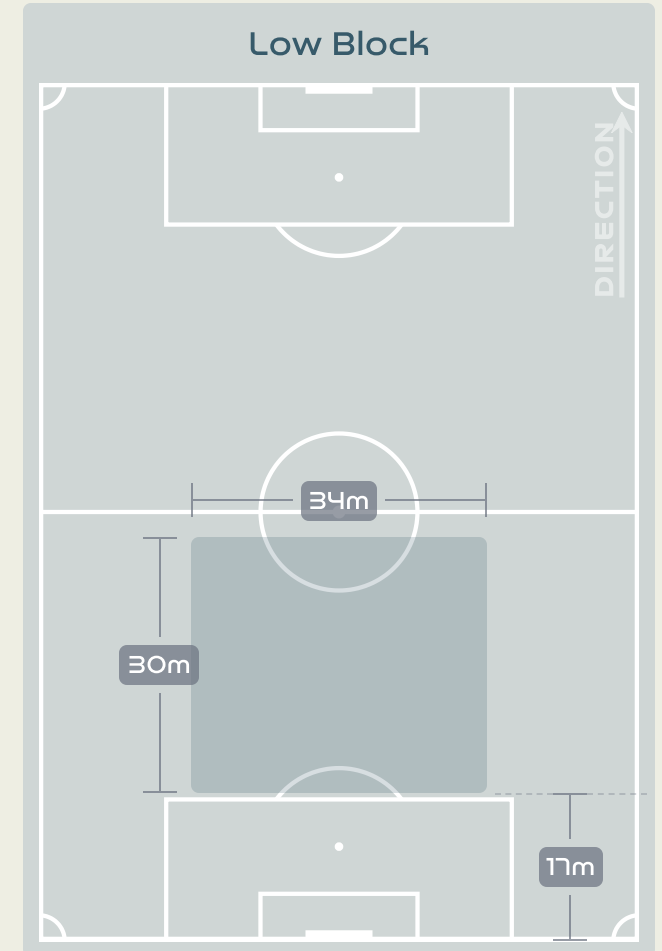
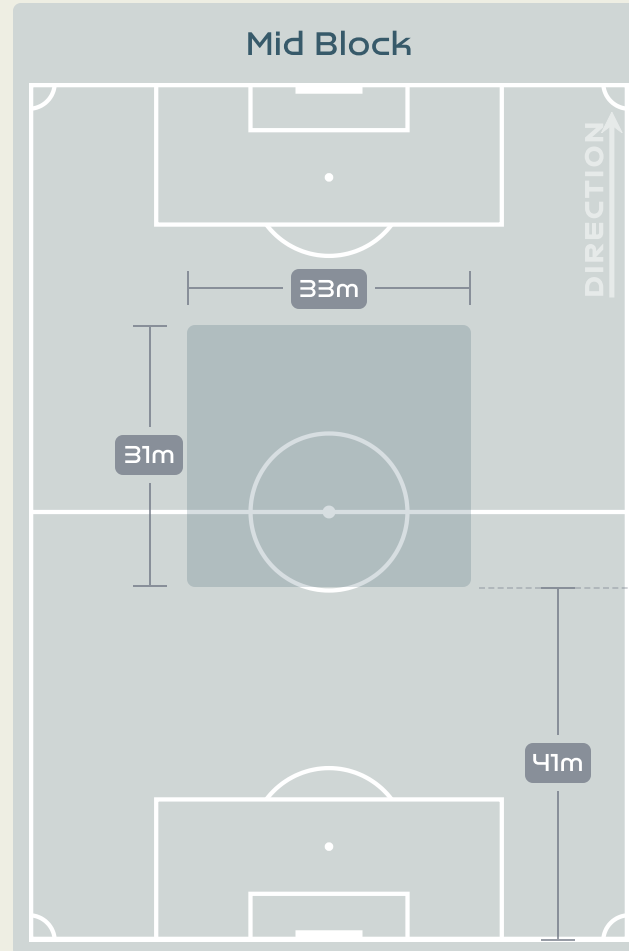
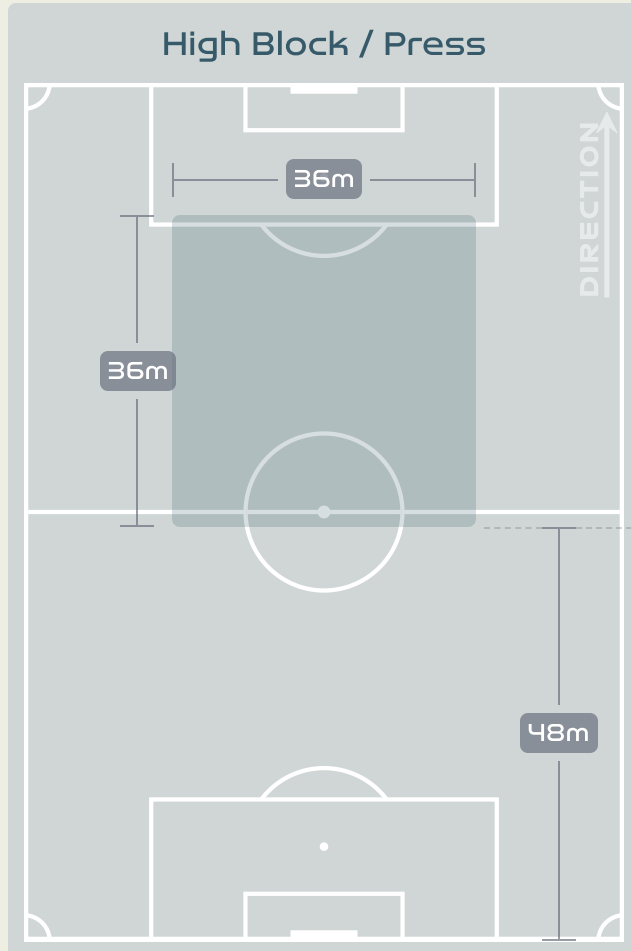
McDANIEL Olivia
GOALKEEPER

Philippines

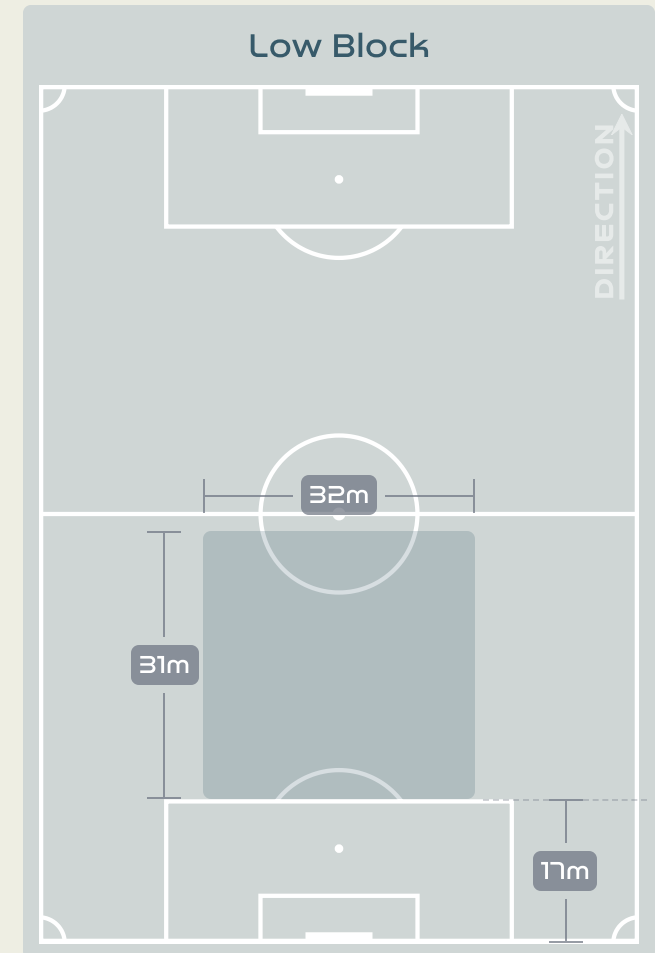
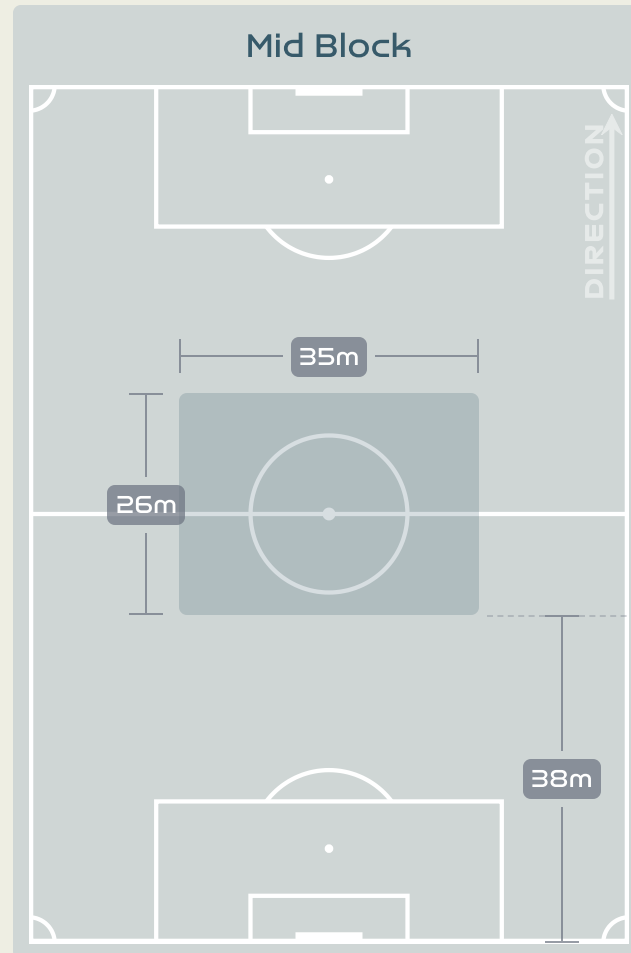
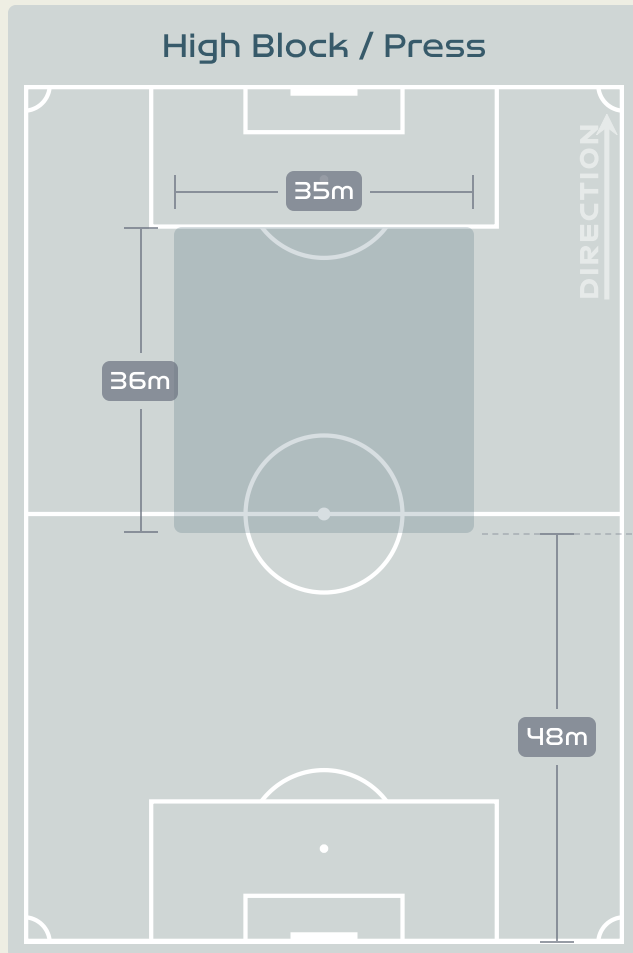


#	Player	Total Possession Regains
1	McDANIEL Olivia	18
3	COWART Jessika	2
4	SAWICKI Jaclyn	3
5	LONG Hali	4
7	BOLDEN Sarina	2
8	EGGESVIK Sara	2
9	FLANIGAN Isabella	1
13	BEARD Angela	8
17	BARKER Alicia	0
20	QUEZADA Quinley	5
21	GUILLOU Katrina	1
10	McDANIEL Chandler	0
12	BUGAY Ryley	1
14	SERRANO Meryll	4
16	HARRISON Sofia	0
19	RANDLE Dominique	4

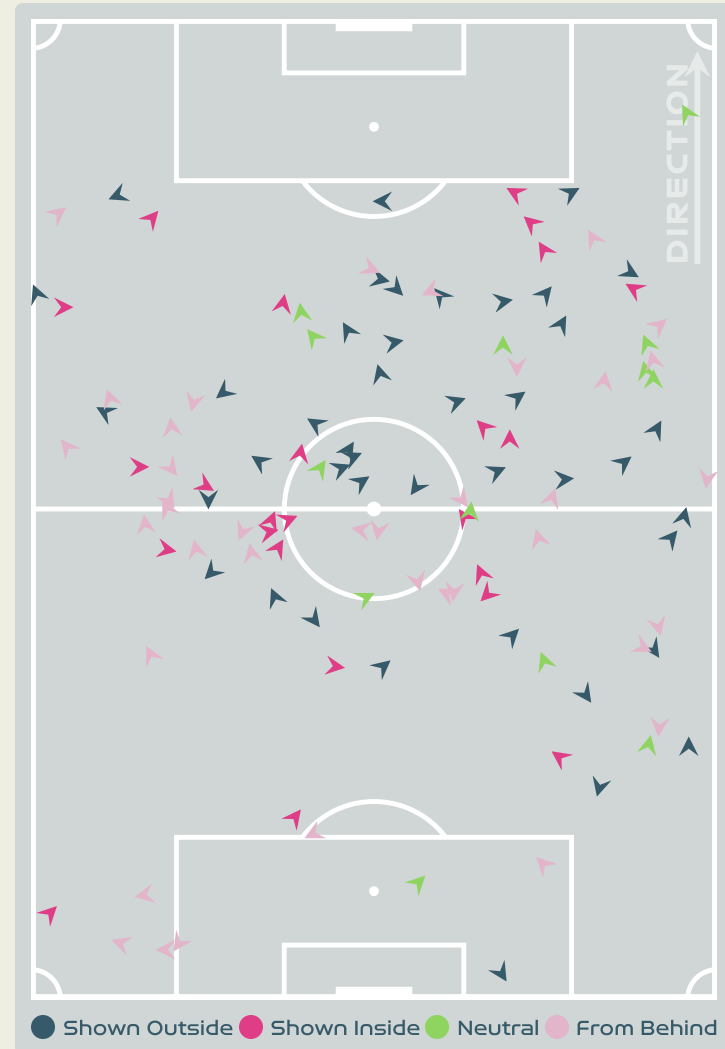
Defensive Line Height & Team Length



Defensive Line Height & Team Length



Defensive Pressure



117	Total Pressures	346
27	Direct Pressures	48
1.38s	Avg Pressure Duration	1.47s
58	Forced Turnovers	82
7.15s	Ball Recovery Time	14.67s
51	Pushing on into Pressing	168
107	Pushing on	321
24	Pressing Direction Inside	35
42	Pressing Direction Outside	198

Most Direct Pressures

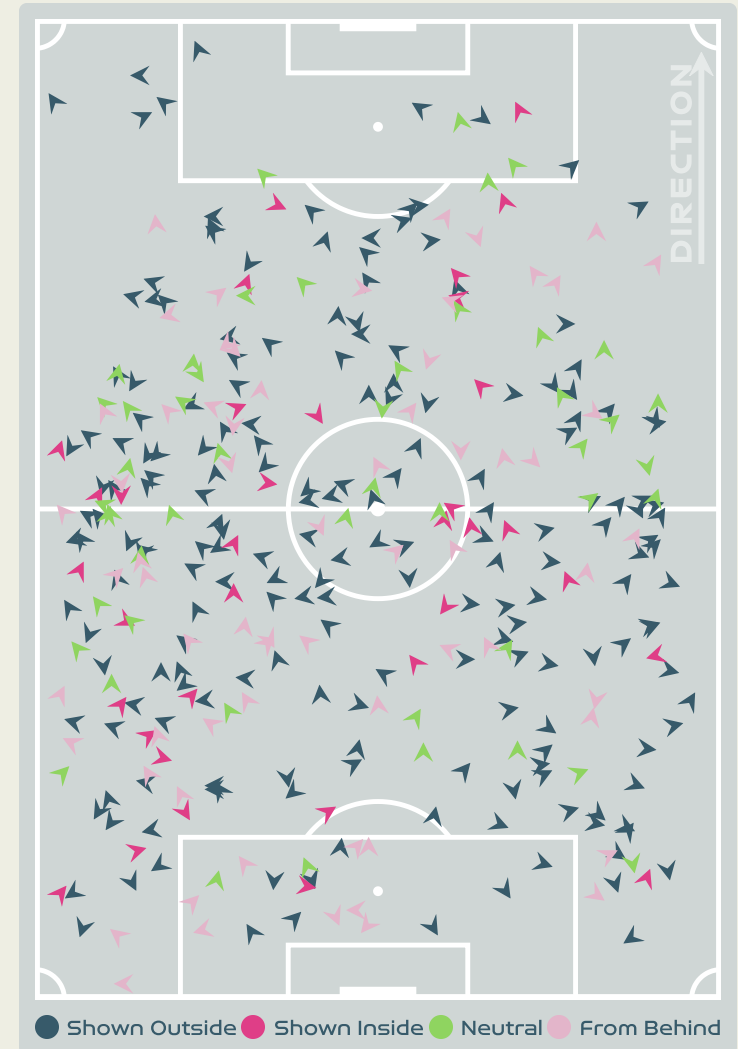
6

GRAHAM HANSEN
Caroline
RIGHT WINGER

Most Direct Pressures

9

GUILLOU Katrina
LEFT MIDFIELD





GOALKEEPING



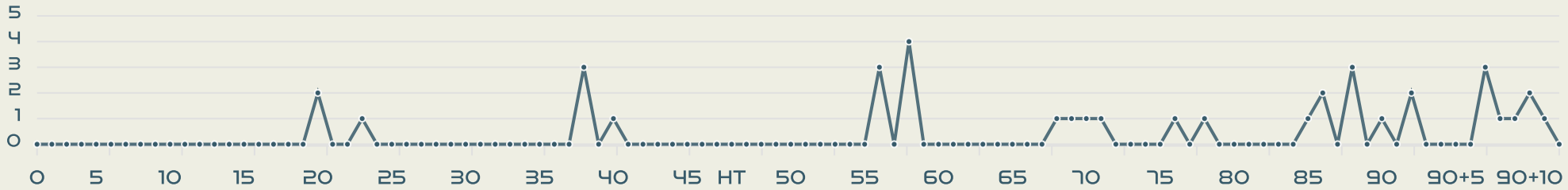
Norway v Philippines



Goalkeeping Involvement



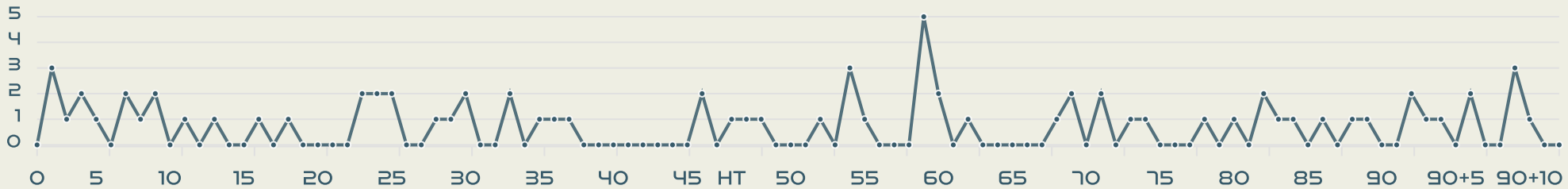
Norway GK Involvement Timeline



37
Total Involvements

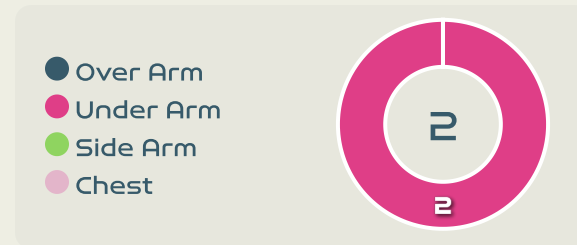
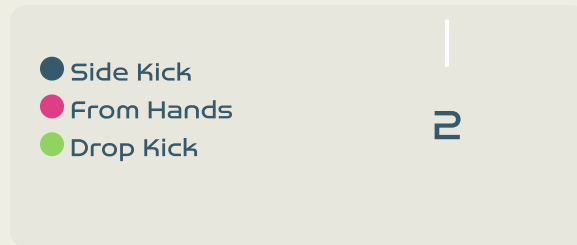
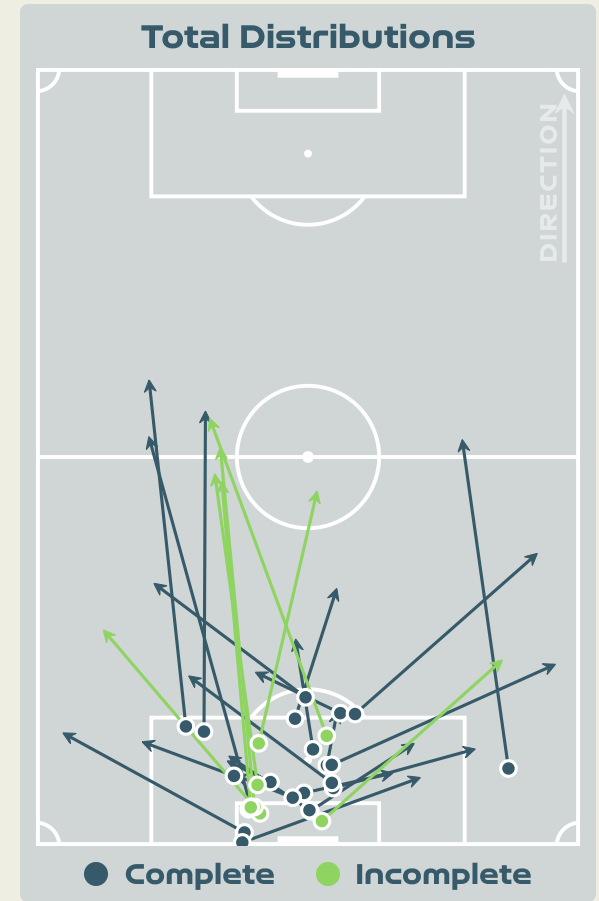
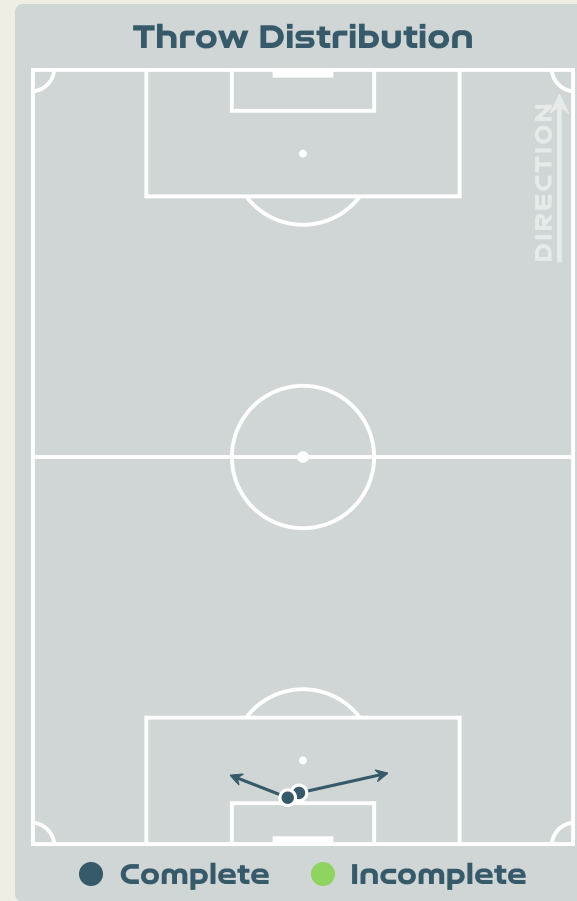
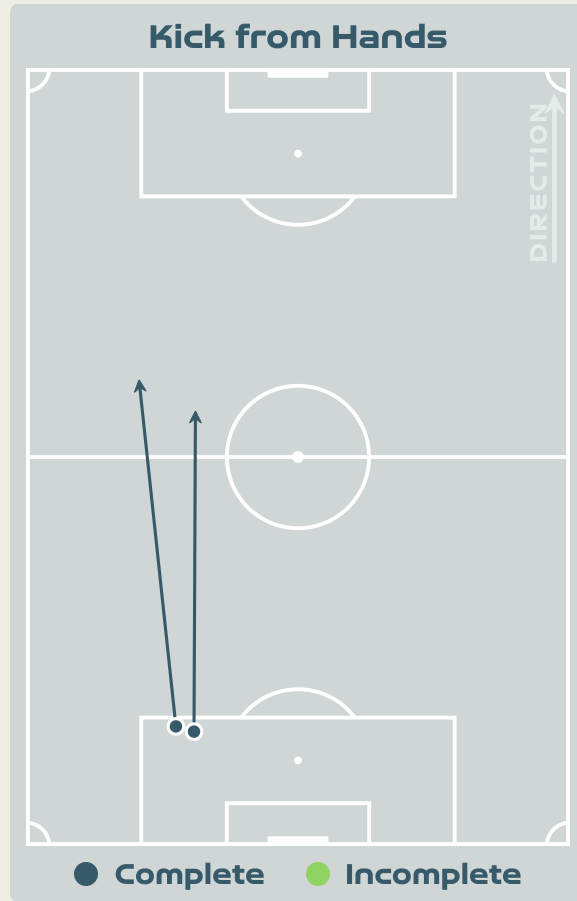
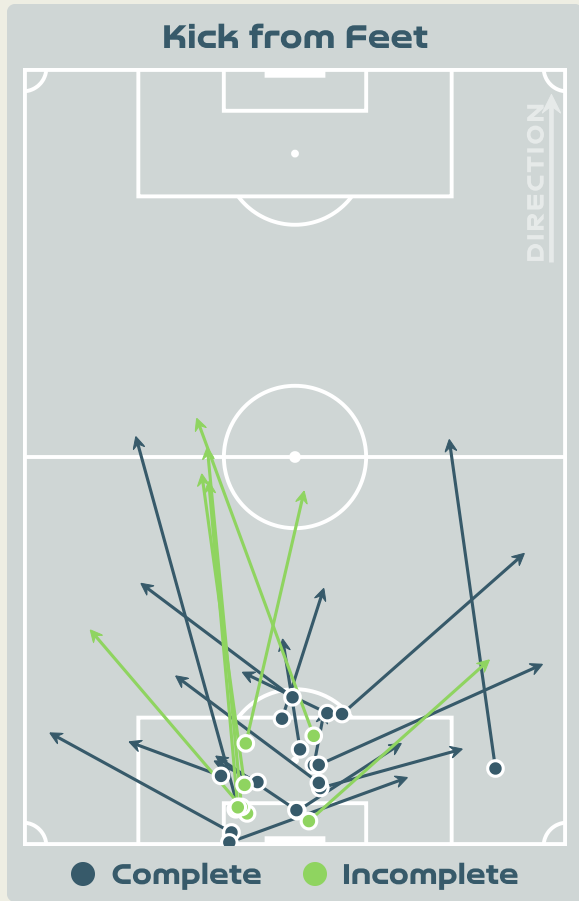


Philippines GK Involvement Timeline

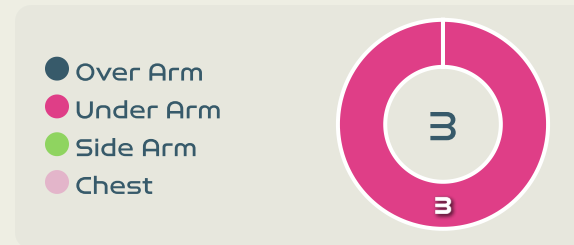
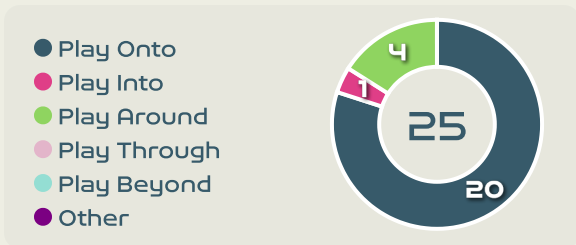
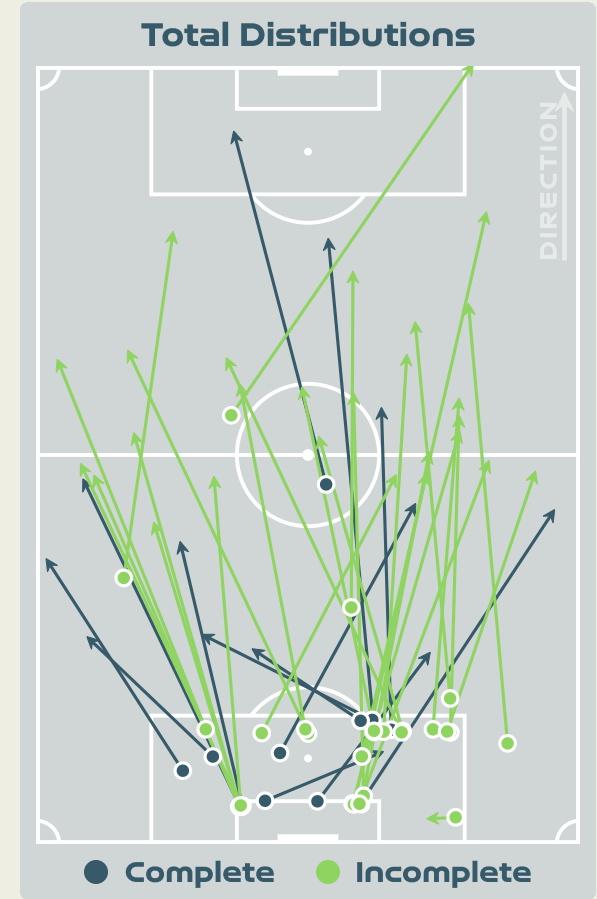
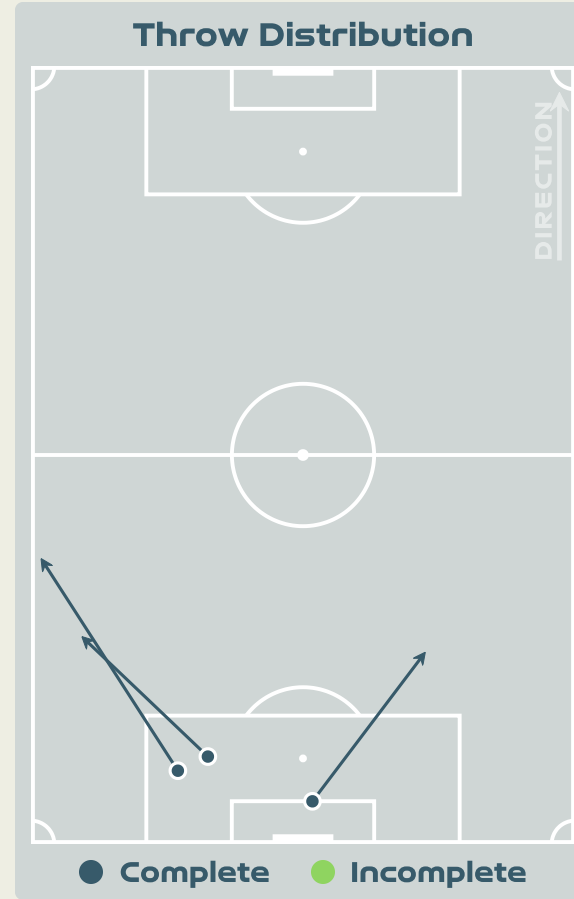
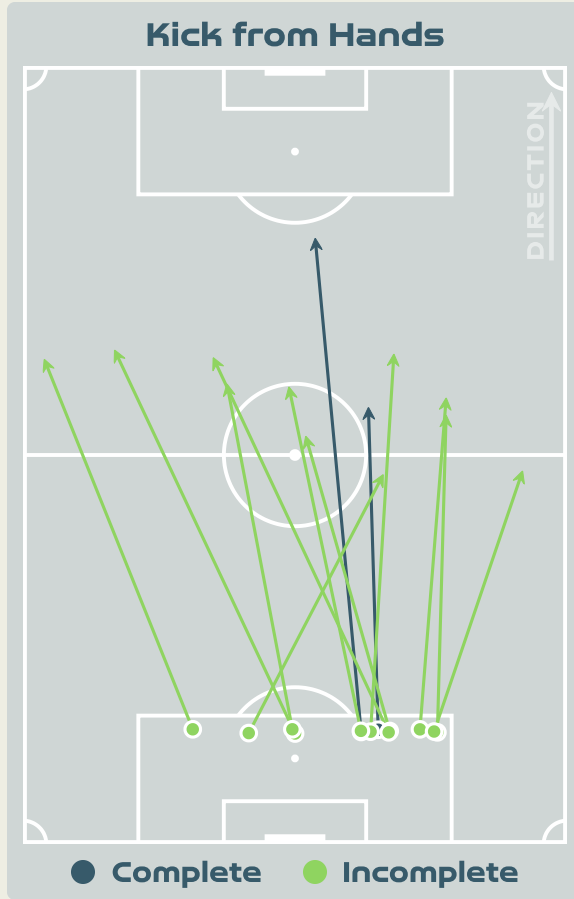
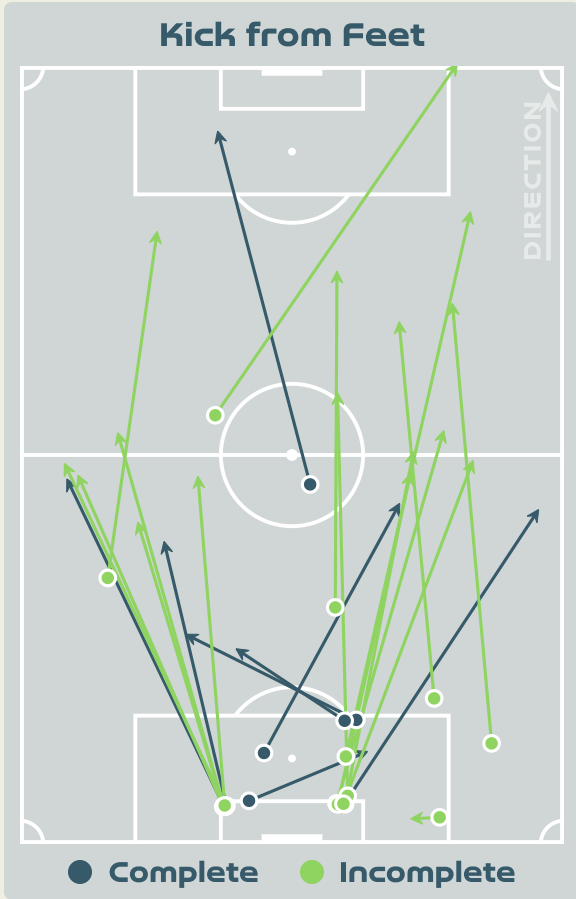


77
Total Involvements

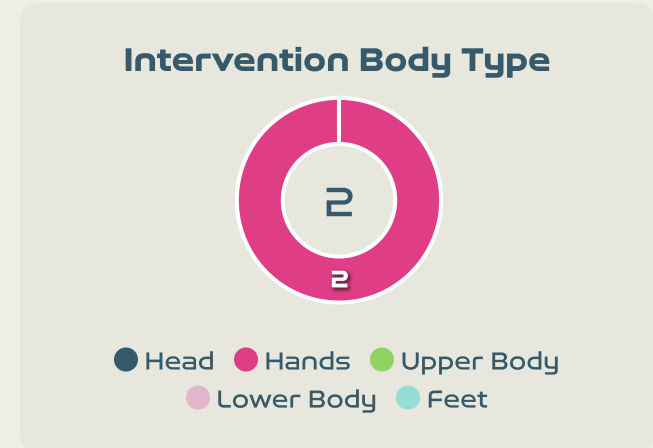
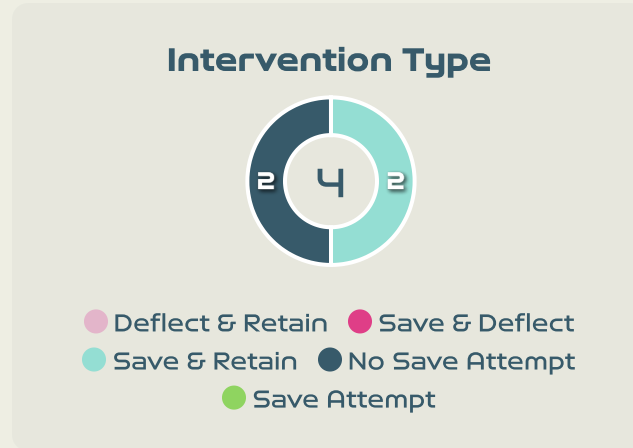
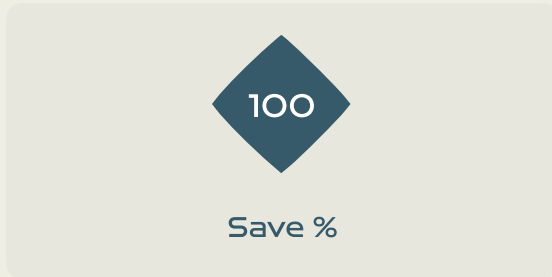
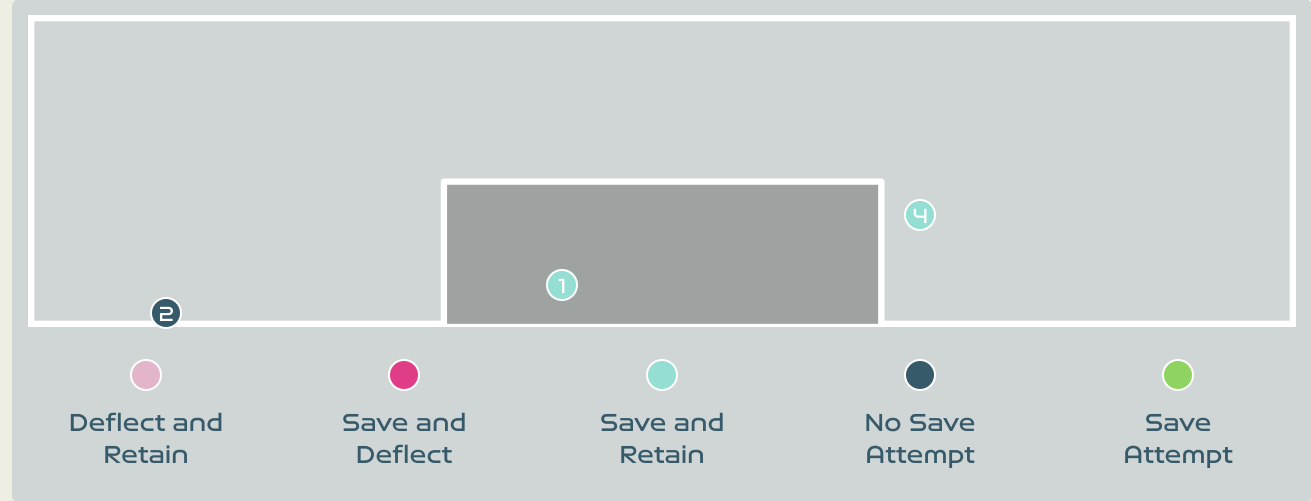
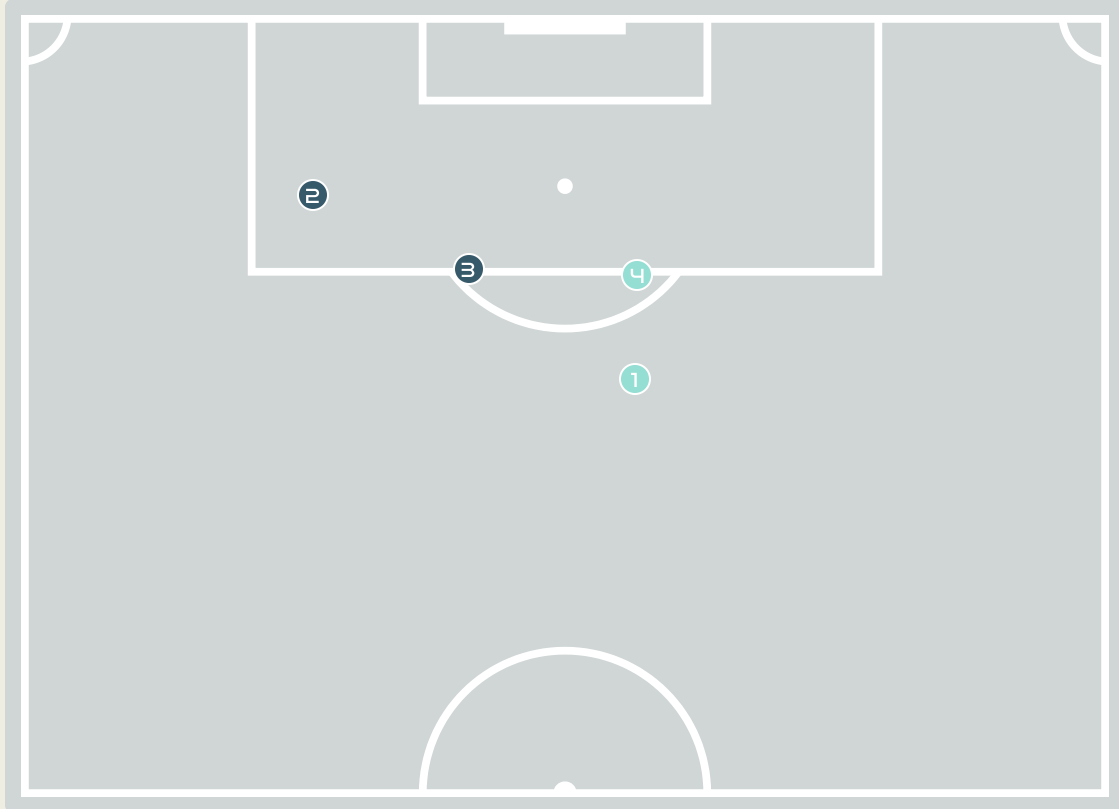
Goalkeeping Distribution



Goalkeeping Distribution

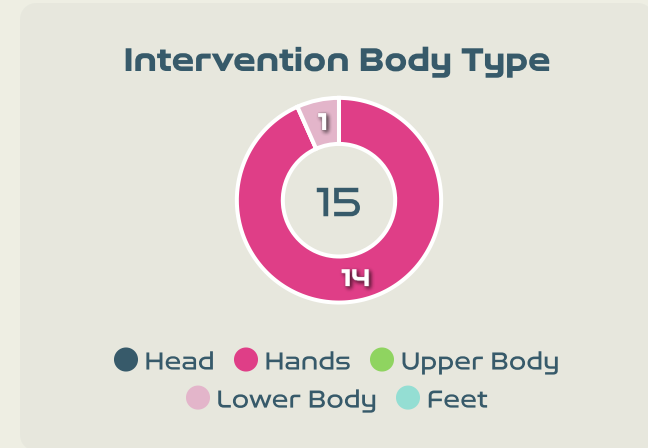
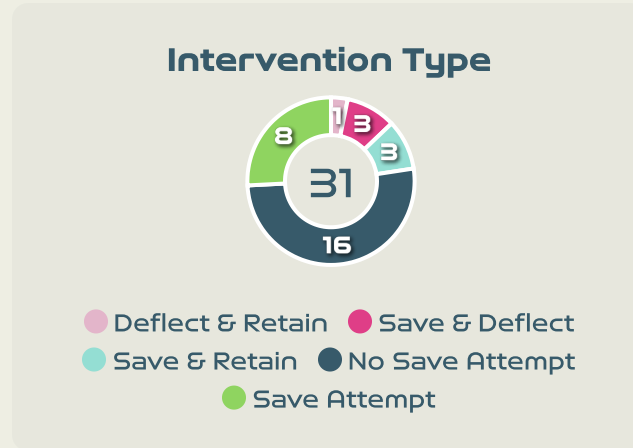
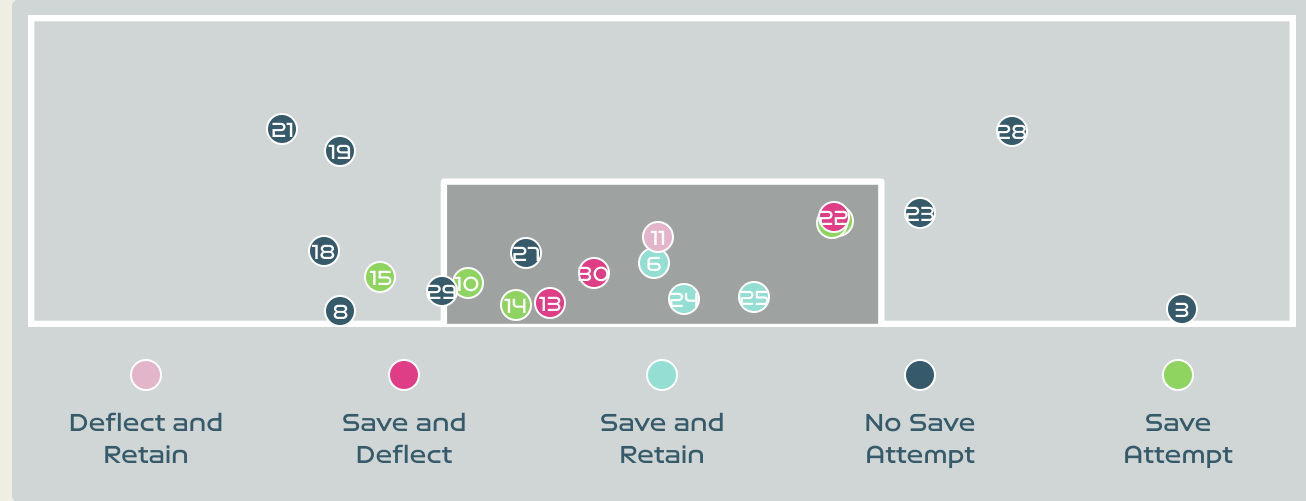
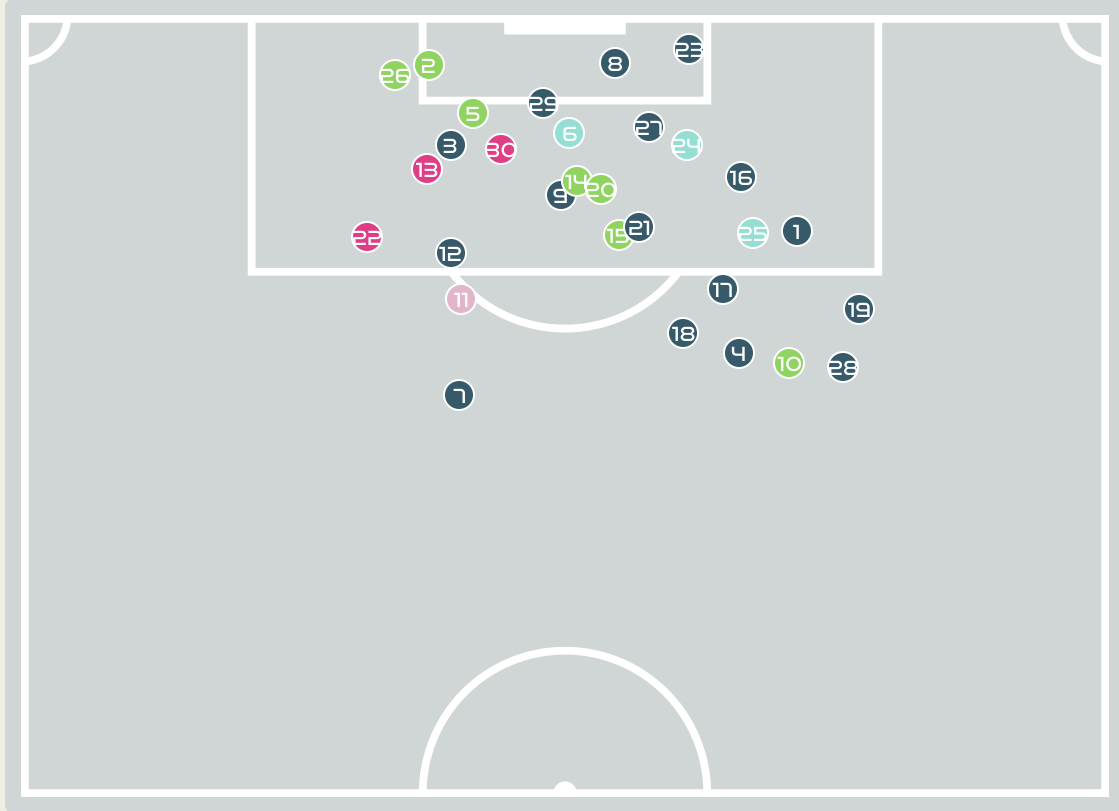


Goal Prevention



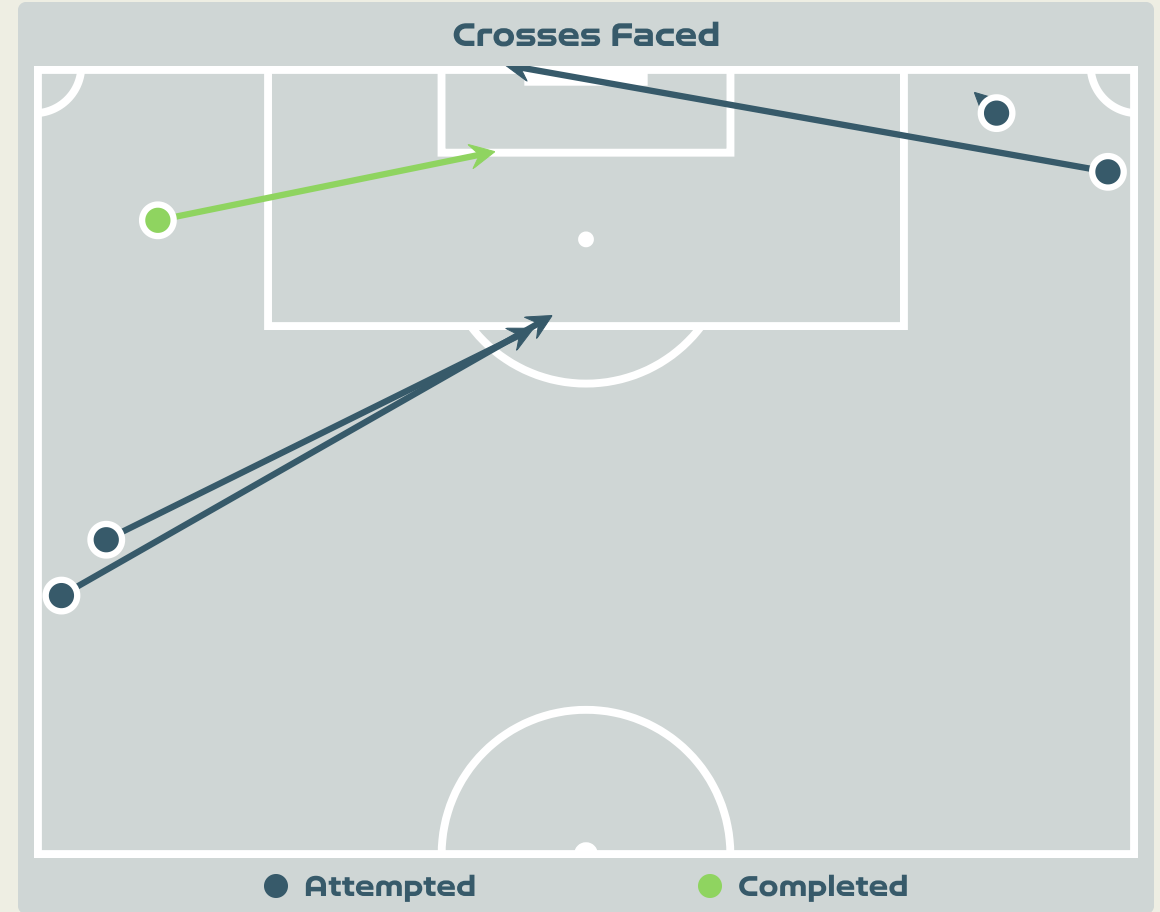
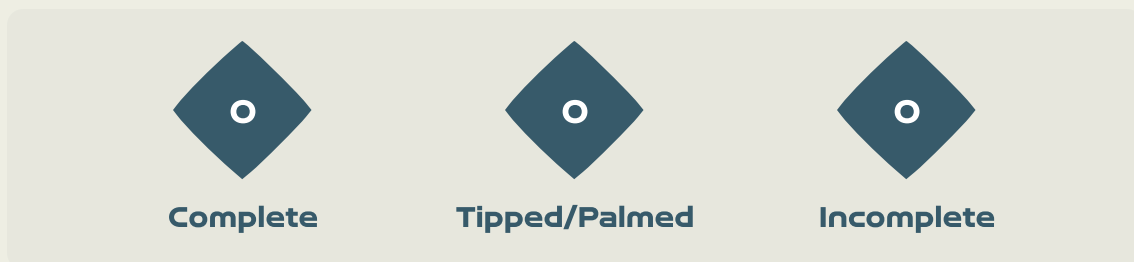
Total Attempts on Goal Faced	Total Goal Interventions	Save & Retain	Deflect & Retain	Save & Deflect	Save Attempt	No Save Attempt
4	2	2	0	0	0	2

Goal Prevention



Total Attempts on Goal Faced	Total Goal Interventions	Save & Retain	Deflect & Retain	Save & Deflect	Save Attempt	No Save Attempt
31	6	3	0	3	8	16

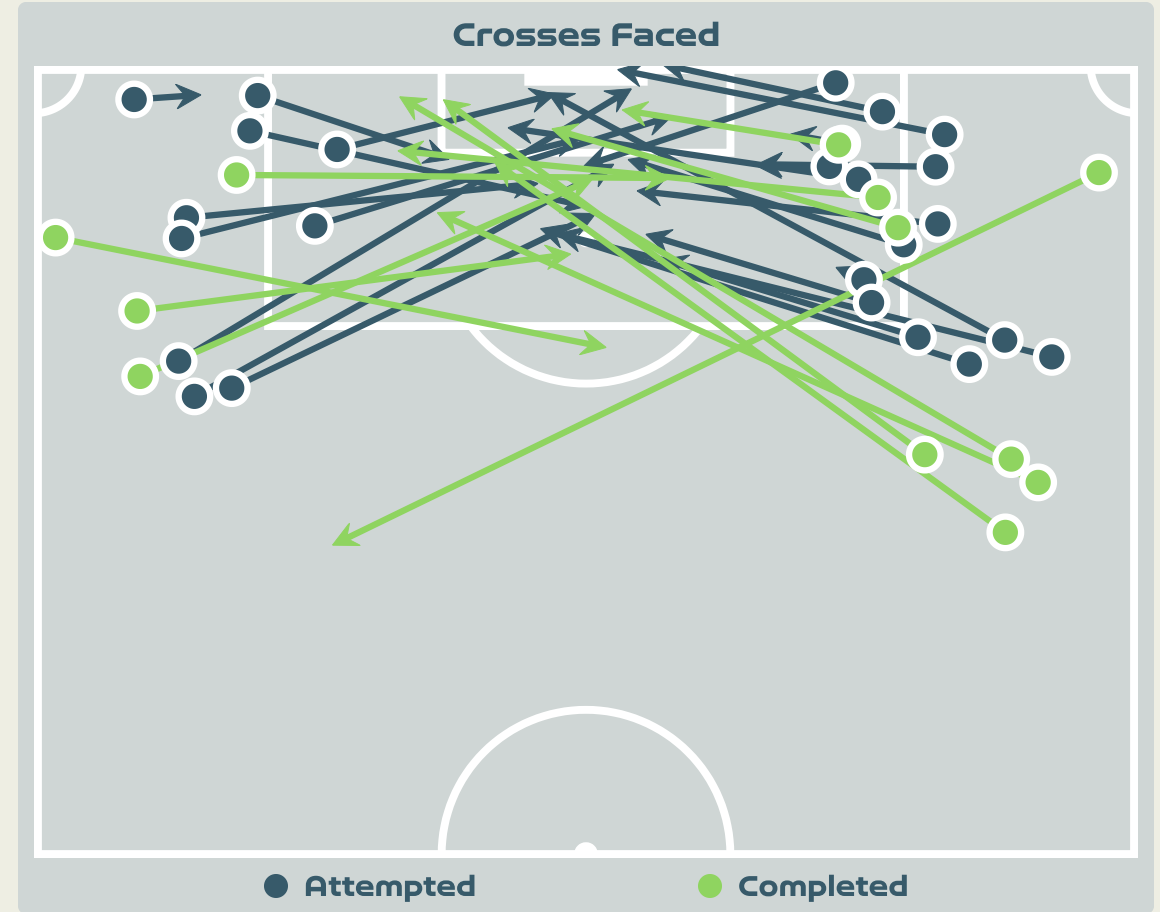
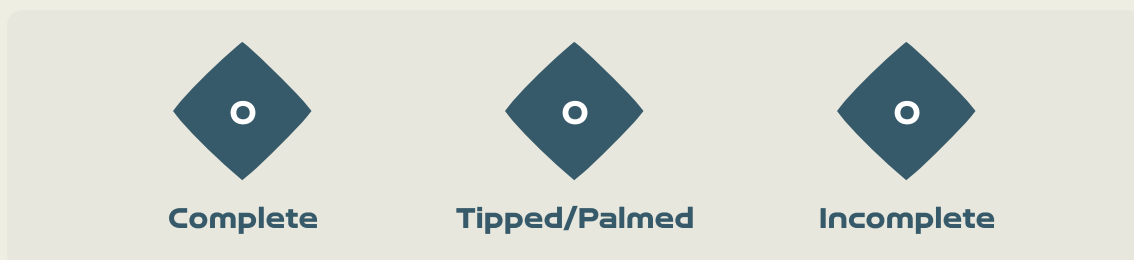
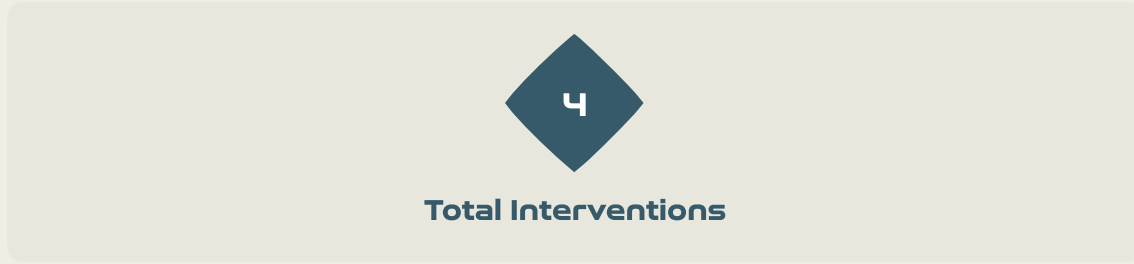
Aerial Control



Delivery Types Faced

Total	In Swing	Out Swing	Driven	Lofted	Cutback	Push
8	3	2	0	2	0	1

Aerial Control



Delivery Types Faced

Total	In Swing	Out Swing	Driven	Lofted	Cutback	Push
42	9	6	6	12	2	7



SET PLAYS



Norway v Philippines



Set Plays - Corners

44

Total Set Plays

7

Total Free Kicks

1

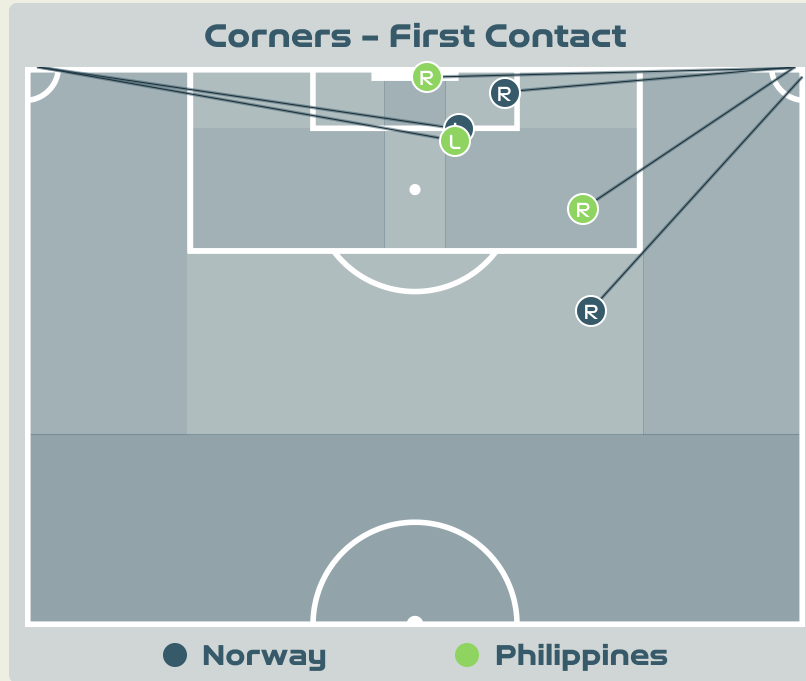
Total Penalties

8

Total Corners

28

Total Throw Ins



Delivery Type	From Left Side	From Right Side	Total
Direct to Area	4	1	5
Short	0	2	2
Edge of Penalty Area	0	1	1

Delivery Style	Total
Inswing	4
Outswing	0
Driven	1

Free Kicks	
Type	Total
Direct	5
Direct (on target)	0
Direct (off target)	0
Indirect	2

First Contacts on Norway Crosses

3

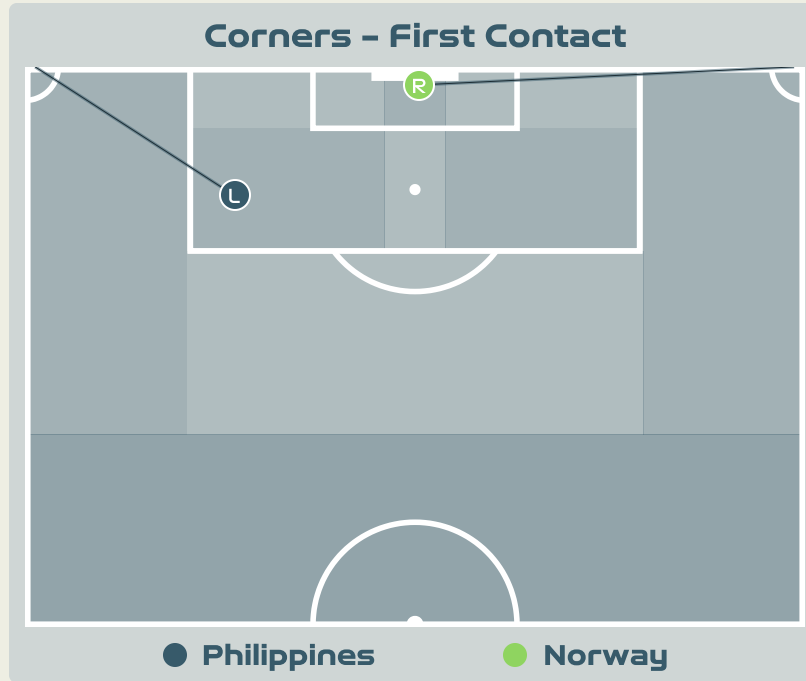
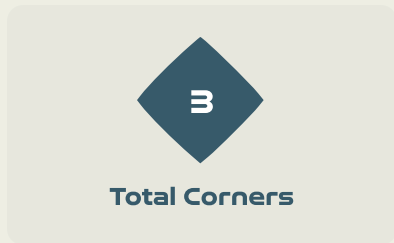
By Norway

3

By Philippines

Top 5 Player First Contacts		
Player	Team	Total
ROMAN HAUG Sophie	Norway	1
SONSTEVOLD Anja	Norway	1
SYRSTAD ENGEN Ingrid	Norway	1
McDANIEL Olivia	Philippines	1
LONG Hali	Philippines	1

Set Plays - Corners



Delivery Type	From Left Side	From Right Side	Total
Direct to Area	1	2	3
Short	0	0	0
Edge of Penalty Area	0	0	0

Delivery Style	Total
Inswing	3
Outswing	0
Driven	0

Free Kicks	
Type	Total
Direct	8
Direct (on target)	0
Direct (off target)	0
Indirect	1

First Contacts on Philippines Crosses



Top 5 Player First Contacts		
Player	Team	Total
BEARD Angela	Philippines	1
MIKALSEN Aurora	Norway	1



INDIVIDUAL DATA IN POSSESSION



Norway v Philippines



In Possession - Distributions



#	Player	Passes Attempted	Passes Completed	Pass Completion %	Switches of Play	Crosses Attempted	Crosses Completed	Line Breaks Attempted	Line Breaks Completed	Line Break Completion %	Ball Progressions	Take Ons	Step Ins	Attempts at Goal	Goals
23	MIKALSEN Aurora	29	21	72%	0	0	0	10	5	50%	0	0	0	0	0
4	HANSEN Tuva	70	60	86%	0	4	1	19	13	68%	0	0	0	2	0
6	MJELDE Maren	118	112	95%	0	0	0	44	40	90%	2	0	2	0	0
8	BOE RISA Vilde	89	75	84%	5	2	2	25	19	76%	1	1	0	1	0
10	GRAHAM HANSEN Caroline	28	25	89%	0	12	2	8	6	75%	8	4	4	7	1
11	REITEN Guro	25	21	84%	1	6	3	7	4	57%	1	0	1	5	1
13	BJELDE Thea	45	37	82%	1	3	2	8	5	62%	0	0	0	0	0
16	HARVIKEN Mathilde	62	59	95%	0	0	0	9	8	88%	0	0	0	0	0
18	MAANUM Frida	40	33	82%	0	4	1	10	4	40%	2	2	0	2	0
20	HAAVI Emilie	14	11	79%	0	4	1	7	7	100%	1	0	1	3	0
22	ROMAN HAUG Sophie	15	12	80%	0	1	0	3	2	66%	0	0	0	6	3
2	SONSTEVOLD Anja	37	33	89%	1	1	0	17	14	82%	0	0	0	0	0
5	BERGSVAND Guro	18	18	100%	0	0	0	4	4	100%	1	0	1	0	0
7	SYRSTAD ENGEN Ingrid	25	23	92%	1	0	0	10	8	80%	0	0	0	2	0
9	SAEVIK Karina	14	11	79%	0	2	0	6	2	33%	3	3	0	0	0
21	JOSENDAL Anna	7	7	100%	0	3	2	2	2	100%	1	0	1	2	0

In Possession - Offers & Receptions



			Offer movement types						
#	Player	Total Offers	In Front	In Between	Out to In	In to Out	In Behind	No Movement	Offers Received
23	MIKALSEN Aurora	10	0	0	0	0	0	10	3
4	HANSEN Tuva	60	28	3	1	1	5	22	31
6	MJELDE Maren	28	8	0	0	0	1	19	7
8	BOE RISA Vilde	87	31	44	2	3	3	4	31
10	GRAHAM HANSEN Caroline	33	2	4	1	1	12	13	17
11	REITEN Guro	99	12	30	2	0	47	8	22
13	BJELDE Thea	31	8	1	0	0	6	16	9
16	HARVIKEN Mathilde	2	0	0	0	0	0	2	0
18	MAANUM Frida	43	8	17	2	4	9	3	18
20	HAAVI Emilie	35	4	2	1	1	13	14	12
22	ROMAN HAUG Sophie	29	1	7	0	0	21	0	7
2	SONSTEVOLD Anja	11	4	0	0	0	0	7	7
5	BERGSVAND Guro	2	0	0	0	0	2	0	0
7	SYRSTAD ENGEN Ingrid	30	15	8	0	1	1	5	7
9	SAEVIK Karina	25	2	8	0	2	6	7	7
21	JOSENDAL Anna	19	0	0	1	0	6	12	10

In Possession - Distributions



#	Player	Passes Attempted	Passes Completed	Pass Completion %	Switches of Play	Crosses Attempted	Crosses Completed	Line Breaks Attempted	Line Breaks Completed	Line Break Completion %	Ball Progressions	Take Ons	Step Ins	Attempts at Goal	Goals
1	McDANIEL Olivia	41	13	32%	0	0	0	29	9	31%	0	0	0	0	0
3	COWART Jessika	30	21	70%	0	0	0	13	8	61%	3	0	3	0	0
4	SAWICKI Jaclyn	21	17	81%	0	0	0	5	3	60%	0	0	0	0	0
5	LONG Hali	25	16	64%	0	0	0	12	7	58%	1	0	1	0	0
7	BOLDEN Sarina	20	12	60%	0	1	0	2	0	0%	0	0	0	0	0
8	EGGESVIK Sara	28	18	64%	0	1	0	10	2	20%	0	0	0	1	0
9	FLANIGAN Isabella	2	0	0%	0	0	0	0	0	0%	0	0	0	0	0
13	BEARD Angela	28	17	61%	0	4	0	13	4	30%	0	0	0	2	0
17	BARKER Alicia	8	4	50%	0	0	0	3	2	66%	0	0	0	0	0
20	QUEZADA Quinley	15	12	80%	0	0	0	2	1	50%	3	2	1	0	0
21	GUILLOU Katrina	16	7	44%	0	0	0	1	0	0%	0	0	0	1	0
10	McDANIEL Chandler	4	3	75%	0	0	0	0	0	0%	0	0	0	0	0
12	BUGAY Ryley	1	1	100%	0	0	0	0	0	0%	0	0	0	0	0
14	SERRANO Meryll	7	4	57%	0	0	0	5	3	60%	0	0	0	0	0
16	HARRISON Sofia	1	1	100%	0	1	1	0	0	0%	0	0	0	0	0
19	RANDLE Dominique	11	6	55%	0	1	0	8	4	50%	0	0	0	0	0

In Possession - Offers & Receptions



			Offer movement types						
#	Player	Total Offers	In Front	In Between	Out to In	In to Out	In Behind	No Movement	Offers Received
1	McDANIEL Olivia	4	0	0	0	0	0	4	3
3	COWART Jessika	3	0	1	0	0	0	2	0
4	SAWICKI Jaclyn	16	9	5	0	0	0	2	7
5	LONG Hali	4	1	0	0	0	0	3	0
7	BOLDEN Sarina	22	0	5	1	2	11	3	5
8	EGGESVIK Sara	17	6	6	1	1	1	2	7
9	FLANIGAN Isabella	31	1	5	3	4	18	0	3
13	BEARD Angela	17	4	0	1	1	4	7	3
17	BARKER Alicia	8	5	0	0	0	0	3	2
20	QUEZADA Quinley	40	5	18	5	3	4	5	13
21	GUILLOU Katrina	49	4	10	1	1	28	5	7
10	McDANIEL Chandler	8	0	4	0	1	3	0	2
12	BUGAY Ryley	0	0	0	0	0	0	0	0
14	SERRANO Meryll	5	0	2	0	1	2	0	0
16	HARRISON Sofia	2	1	0	0	1	0	0	1
19	RANDLE Dominique	7	0	1	1	1	0	4	0



INDIVIDUAL DATA OUT OF POSSESSION



Norway v Philippines



Out of Possession



#	Player	Tackles Made / Won	Blocks	Interceptions	Pressing Direct	Pressing Indirect	Duels Won - Aerial	Duels Won - Physical	Possession Contests won	Clearances	Loose Ball Receptions	Pushing On	Pushing On into Pressing	Possession Regains	Possession Interrupted
23	MIKALSEN Aurora	0 / 0	0	0	0	0	0	0	0	0	3	0	0	4	0
4	HANSEN Tuva	3 / 0	2	0	4	7	0	0	1	2	10	14	7	0	2
6	MJELDE Maren	0 / 0	1	3	0	2	1	0	2	7	15	3	1	7	2
8	BOE RISA Vilde	2 / 1	1	1	4	6	5	0	6	9	13	10	2	6	8
10	GRAHAM HANSEN Caroline	3 / 1	1	1	6	8	0	0	0	0	11	7	3	3	0
11	REITEN Guro	1 / 0	0	0	2	16	0	0	0	3	3	19	9	0	2
13	BJELDE Thea	2 / 1	6	0	3	2	2	0	2	2	3	4	2	7	2
16	HARVIKEN Mathilde	0 / 0	0	1	1	1	2	0	2	9	4	4	1	9	3
18	MAANUM Frida	0 / 0	1	0	1	13	2	1	3	0	8	9	6	2	0
20	HAAVI Emilie	1 / 0	4	0	1	3	1	0	1	1	4	3	1	1	4
22	ROMAN HAUG Sophie	0 / 0	0	0	1	25	9	0	10	1	0	22	14	1	1
2	SONSTEVOLD Anja	0 / 0	0	1	0	1	0	0	0	2	3	2	1	1	1
5	BERGSVAND Guro	1 / 1	0	0	1	0	0	0	0	2	2	2	0	2	1
7	SYRSTAD ENGEN Ingrid	1 / 1	1	0	1	2	2	0	2	3	5	2	1	3	2
9	SAEVIK Karina	0 / 0	0	0	2	0	0	0	1	0	3	0	0	1	0
21	JOSENDAL Anna	0 / 0	0	0	0	4	0	0	0	1	1	6	3	2	1

Out of Possession



#	Player	Tackles Made / Won	Blocks	Interceptions	Pressing Direct	Pressing Indirect	Duels Won - Aerial	Duels Won - Physical	Possession Contests won	Clearances	Loose Ball Receptions	Pushing On	Pushing On into Pressing	Possession Regains	Possession Interrupted
1	McDANIEL Olivia	0 / 0	0	0	0	0	0	0	0	0	9	0	0	18	0
3	COWART Jessika	0 / 0	4	0	0	11	3	0	3	8	10	13	6	2	8
4	SAWICKI Jaclyn	1 / 0	1	0	5	21	0	0	0	5	8	39	15	3	3
5	LONG Hali	0 / 0	3	4	1	3	4	0	4	10	4	10	1	4	8
7	BOLDEN Sarina	1 / 1	3	0	1	13	1	0	1	1	6	13	6	2	1
8	EGGESVIK Sara	3 / 0	2	2	5	36	2	0	2	9	8	42	18	2	11
9	FLANIGAN Isabella	1 / 1	0	0	3	52	0	0	0	0	0	14	11	1	0
13	BEARD Angela	3 / 1	3	0	5	22	1	0	3	8	6	36	16	8	2
17	BARKER Alicia	1 / 0	1	0	1	7	0	0	0	2	1	10	6	0	2
20	QUEZADA Quinley	3 / 1	1	0	6	29	1	0	1	3	4	35	23	5	2
21	GUILLOU Katrina	4 / 1	2	0	9	51	1	0	1	4	8	55	32	1	5
10	McDANIEL Chandler	0 / 0	0	0	0	20	0	0	0	0	3	10	6	0	0
12	BUGAY Ryley	1 / 0	1	0	4	12	2	0	2	0	1	14	6	1	0
14	SERRANO Meryll	1 / 1	1	1	2	8	0	0	0	0	0	11	7	4	0
16	HARRISON Sofia	2 / 0	0	0	3	2	0	0	0	0	0	5	3	0	1
19	RANDLE Dominique	1 / 1	2	0	3	11	0	0	0	3	4	14	12	4	3



INDIVIDUAL DATA PHYSICAL



Norway v Philippines



Physical Data



#	Player	Total Distance (m)	Zone 1: 0-7 km/h (m)	Zone 2: 7-13km/h (m)	Zone 3: 13-19km/h (m)	Zone 4: 19-23km/h (m)	Zone 5: 23+ km/h (m)	High Speed Runs (Zone 4)	Sprints (Zone 5)	Top Speed (km/h)
23	MIKALSEN Aurora	4932.7	3274.3	1257.8	359.6	41.4	0	37.0	6.0	21.8
4	HANSEN Tuva	10784.9	3508.3	4378.7	2263.8	489.6	144.5	172.0	45.0	32.7
6	MJELDE Maren	10372.3	3854.3	4176.9	1919.9	343.3	77.8	162.0	36.0	29.8
8	BOE RISA Vilde	11577.9	3395.8	5250.6	2710.4	201.5	20.8	211.0	22.0	32.4
10	GRAHAM HANSEN Caroline	8393.2	3082.8	3000.6	1525.9	419.7	364.3	128.0	44.0	32.9
11	REITEN Guro	11271.7	3918.0	4001.5	2393.0	636.9	321.2	197.0	60.0	31.7
13	BJELDE Thea	7420.1	2157.8	3028.1	1643.5	425.9	164.0	149.0	35.0	31.6
16	HARVIKEN Mathilde	8151.7	2894.7	2932.2	1913.2	298.4	113.3	151.0	30.0	30.1
18	MAANUM Frida	7904.9	2516.1	2939.8	1902.7	440.3	105.9	152.0	38.0	32.1
20	HAAVI Emilie	7384.6	2929.5	2343.9	1526.4	263.6	321.2	119.0	35.0	30.0
22	ROMAN HAUG Sophie	11390.7	3822.7	3425.2	2779.3	923.8	439.7	254.0	86.0	31.7
2	SONSTEVOLD Anja	4395.9	1160.9	1919.7	1136.3	142.4	36.5	79.0	15.0	31.9
5	BERGSVAND Guro	2480.6	680.2	1082.0	552.4	88.6	77.4	51.0	9.0	30.3
7	SYRSTAD ENGEN Ingrid	4688.9	1012.3	1702.5	1657.5	230.2	86.3	115.0	18.0	29.8
9	SAEVIK Karina	4116.4	1082.2	1634.2	950.9	317.8	130.9	77.0	24.0	32.6
21	JOSENDAL Anna	2979.0	667.3	1111.2	848.1	168.3	184.4	65.0	19.0	30.6

Physical Data

Philippines



#	Player	Total Distance (m)	Zone 1: 0-7 km/h (m)	Zone 2: 7-13km/h (m)	Zone 3: 13-19km/h (m)	Zone 4: 19-23km/h (m)	Zone 5: 23+ km/h (m)	High Speed Runs (Zone 4)	Sprints (Zone 5)	Top Speed (km/h)
1	McDANIEL Olivia	5403.7	3687.5	1196.9	451.2	68.1	0	42.0	9.0	26.4
3	COWART Jessika	10659.3	3520.8	4369.3	2113.7	508.5	147.1	193.0	49.0	31.8
4	SAWICKI Jaclyn	8239.3	2231.2	3540.4	1793.7	510.8	162.3	159.0	44.0	29.1
5	LONG Hali	10387.5	3741.6	3828.8	2145.0	407.2	265.9	185.0	42.0	32.0
7	BOLDEN Sarina	8261.3	2465.2	3205.4	2045.5	403.2	142.1	175.0	42.0	30.4
8	EGGESVIK Sara	12362.1	3026.2	5136.4	3222.8	697.2	279.4	253.0	70.0	32.6
9	FLANIGAN Isabella	6762.2	1971.2	2497.3	1664.9	438.2	190.7	155.0	45.0	30.0
13	BEARD Angela	11662.5	3404.3	4610.2	2520.3	866.5	261.2	206.0	69.0	31.1
17	BARKER Alicia	6258.9	1970.3	2644.4	1201.7	334.8	107.0	108.0	29.0	30.7
20	QUEZADA Quinley	9077.3	2569.8	3414.9	2299.3	603.6	188.8	195.0	53.0	31.7
21	GUILLOU Katrina	10807.2	3469.1	3996.5	2408.9	676.5	255.0	210.0	77.0	30.0
10	McDANIEL Chandler	3777.8	778.6	1482.4	1120.9	221.4	174.5	79.0	24.0	29.0
12	BUGAY Ryley	3647.3	775.1	1497.2	1092.4	224.7	58.0	81.0	19.0	30.7
14	SERRANO Meryll	2621.7	598.8	1089.8	795.9	130.6	6.8	52.0	7.0	26.1
16	HARRISON Sofia	1024.6	280.3	308.1	321.7	87.8	26.6	28.0	7.0	31.7
19	RANDLE Dominique	5241.8	1338.2	1697.8	1472.4	496.4	236.9	115.0	38.0	31.3

