



Sweden 5 - 0 Italy

Group G - Match 30
29 July 2023
19:30 Kick Off
Sky Stadium

POST MATCH SUMMARY REPORT

Match Summary - Teams



Sweden

5 — 0



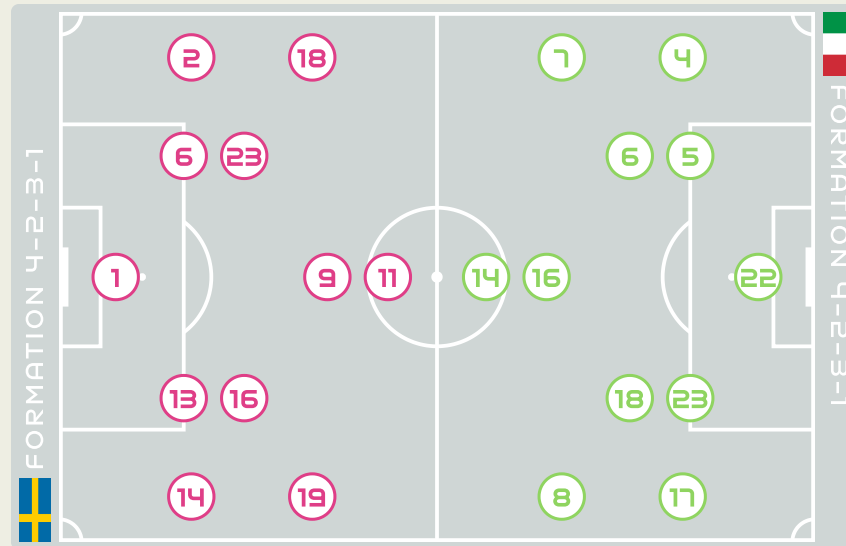
Italy

STARTING

1	GK	MUSOVIC Zecira		
2	DF	ANDERSSON Jonna		
6	DF	ERIKSSON Magdalena		
9	MF	ASLLANI Kosovare (C)	↓ 62'	
11	FW	BLACKSTENIUS Stina	⚽ 45+1'	↓ 89'
13	DF	ILESTEDT Amanda	⚽ 39'	⚽ 50'
14	DF	BJORN Nathalie		
16	MF	ANGELDAL Filippa		
18	MF	ROLFO Fridolina	⚽ 44'	↓ 62'
19	MF	KANERYD Johanna	↓ 75'	
23	MF	RUBENSSON Elin	↓ 75'	

SUBSTITUTES

12	GK	FALK Jennifer		
21	GK	ENBLOM Tove		
3	DF	SEMBRANT Linda		
4	DF	LENNARTSSON Stina		
5	DF	SANDBERG Anna		
7	FW	JANOGY Madelen	↑ 62'	
8	FW	HURTIG Lina		
10	FW	JAKOBSSON Sofia	↑ 75'	
15	FW	BLOMQVIST Rebecka	↑ 89'	⚽ 90+5'
17	MF	SEGER Caroline	↑ 75'	
20	MF	BENNISON Hanna		
22	MF	SCHOUGH Olivia	↑ 62'	



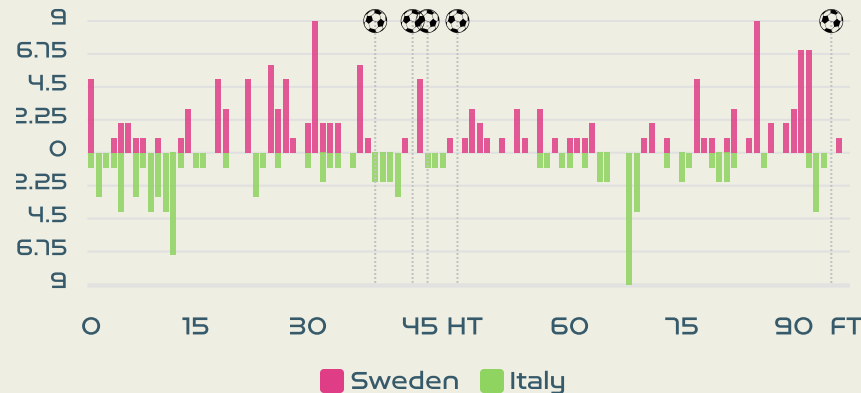
STARTING

		DURANTE Francesca	GK	22	
↓ 59'		DI GUGLIELMO Lucia	DF	4	
		LINARI Elena	DF	5	
		GIUGLIANO Manuela	MF	6	
		CANTORE Sofia	FW	7	
↓ 59'		(C) BONANSEA Barbara	FW	8	
↓ 75'		BECCARI Chiara	FW	14	
↓ 59'		DRAGONI Giulia	MF	16	
		BOATTIN Lisa	DF	17	
↓ 71'		CARUSO Arianna	MF	18	
		SALVAI Cecilia	DF	23	

SUBSTITUTES

		GIULIANI Laura	GK	1	
		BALDI Rachele	GK	12	
		SEVERINI Emma	MF	2	
		ORSI Benedetta	DF	3	
↑ 75'		GIACINTI Valentina	FW	9	
		GIRELLI Cristiana	FW	10	
		GLIONNA Benedetta	FW	11	
		BARTOLI Elisa	DF	13	
↑ 59'		SERTURINI Annamaria	FW	15	
↑ 59'		LENZINI Martina	DF	19	
↑ 59'		GREGGI Giada	MF	20	
↑ 71'		CERNOIA Valentina	MF	21	

Distribution in the Final Third



Match Summary - Key Statistics



Possession

Total	39.6%	12.1%	48.3%	Total
5	Goals			0
20 (7)	Attempts at Goal (On Target)			12 (3)
425 (337)	Total Passes (Complete)			485 (386)
79 %	Pass Completion %			80 %
87	Completed Line Breaks			95
14	Defensive Line Breaks			5
127	Receptions in the Final Third			78
20	Crosses			13
16	Ball Progressions			22
266 (60)	Defensive Pressures Applied (Direct Pressures)			253 (69)
95	Forced Turnovers			101
96	Second Balls			80
112.8 km	Total Distance Covered			109.4 km
5 km	Zone 4 - Low Speed Sprinting: 19-23km/h			5.2 km



Sweden

Phases of Play



Italy

IN POSSESSION



OUT OF POSSESSION





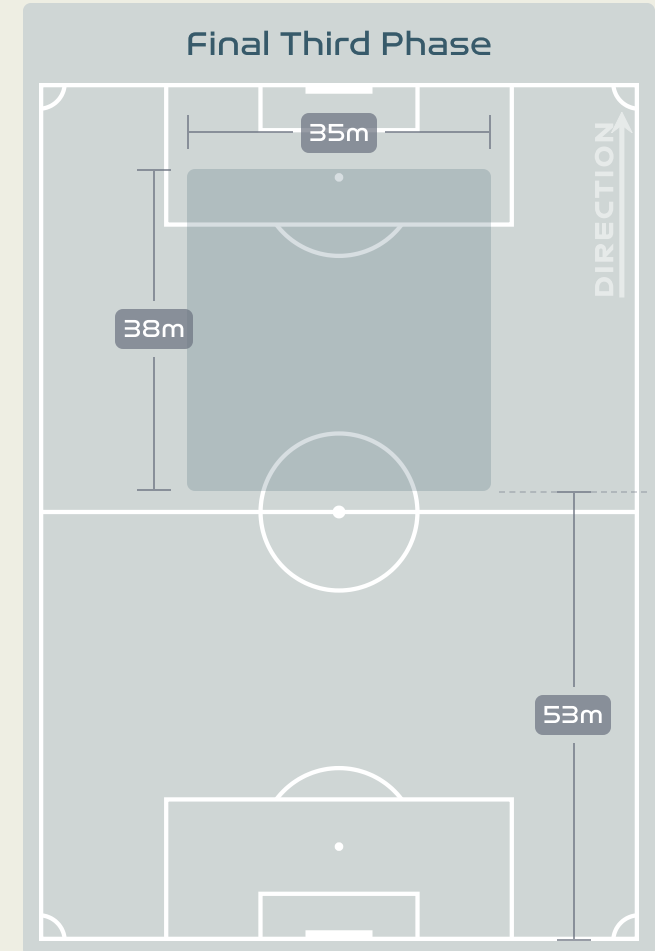
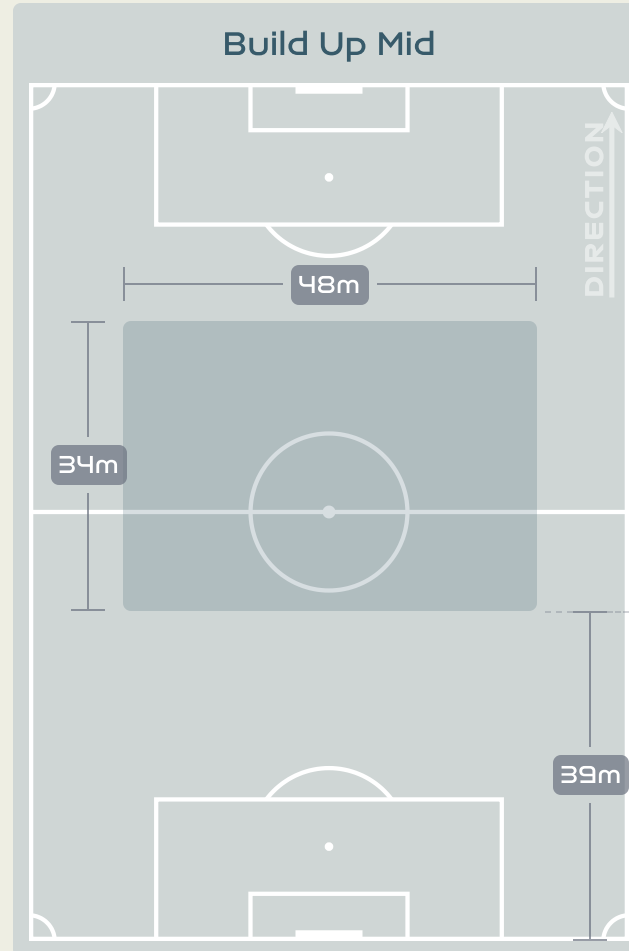
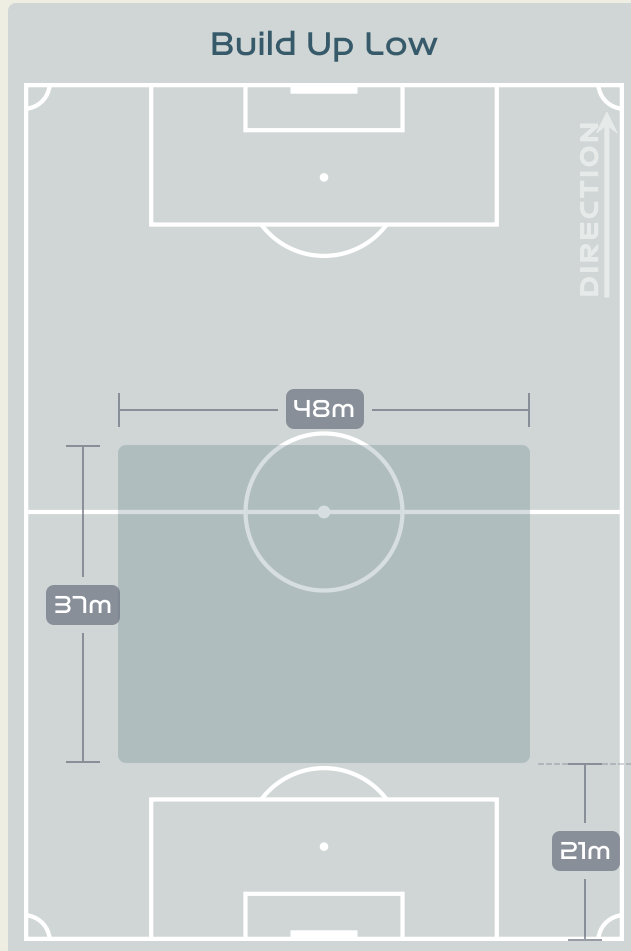
IN POSSESSION



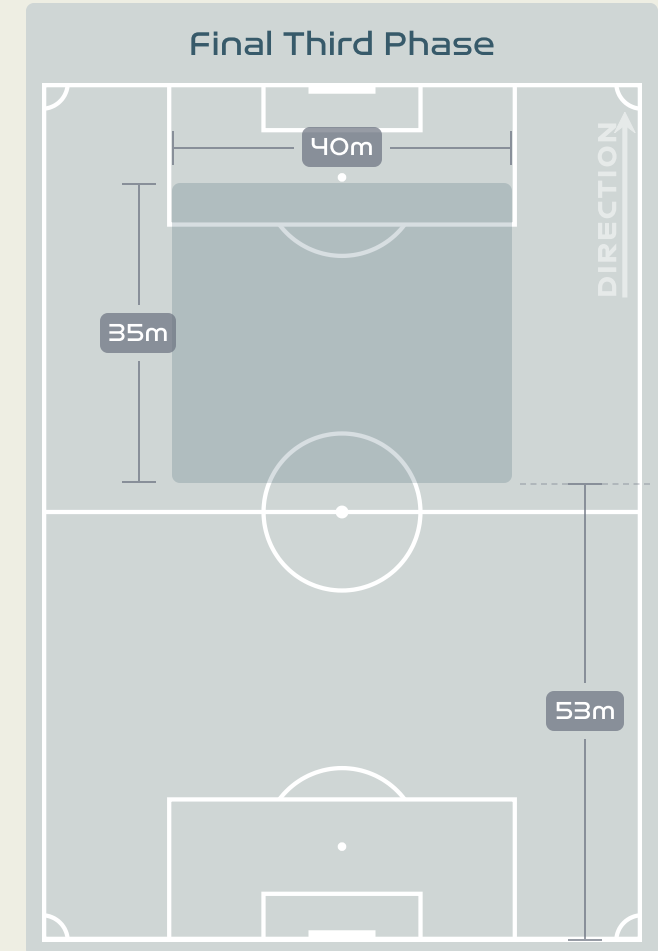
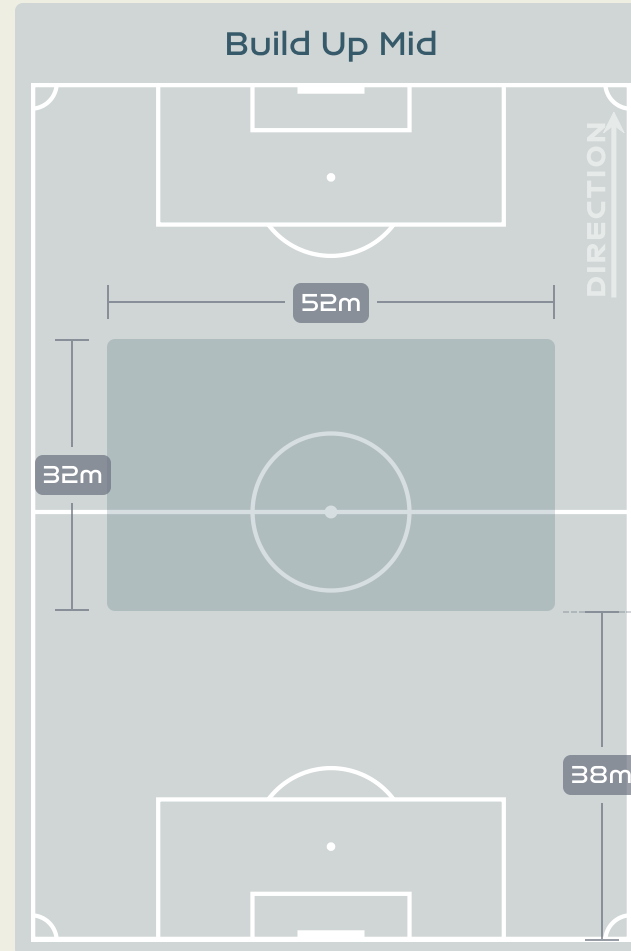
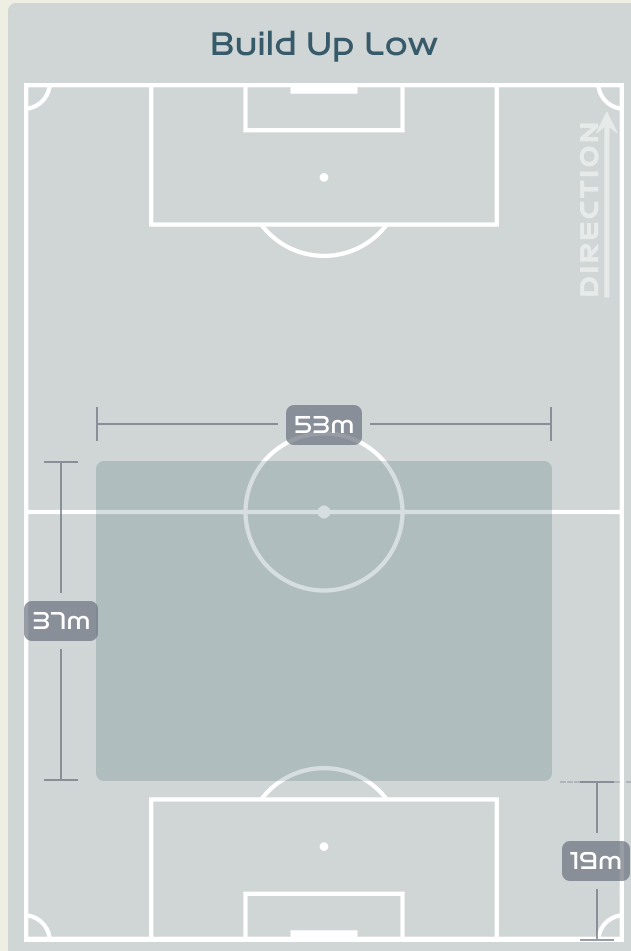
Sweden v Italy



In Possession Line Height & Team Length



In Possession Line Height & Team Length



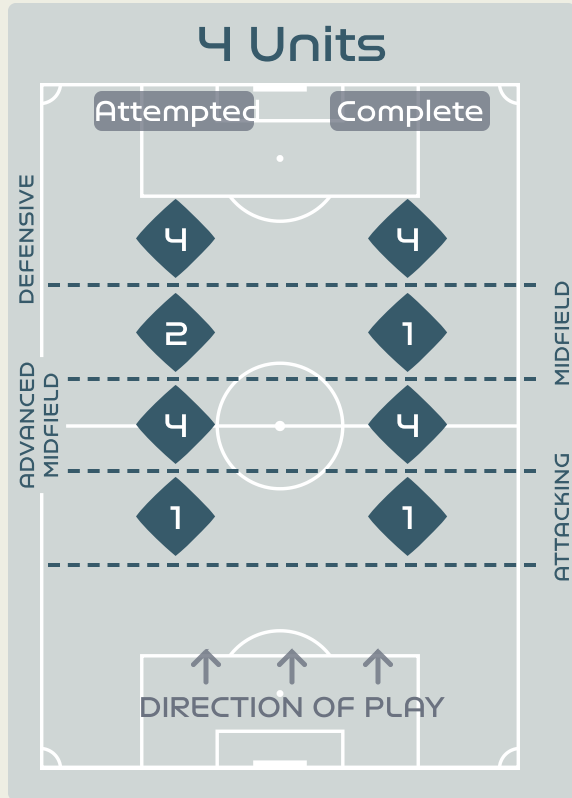
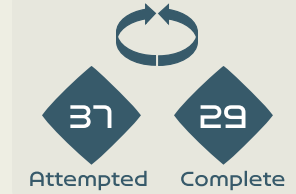
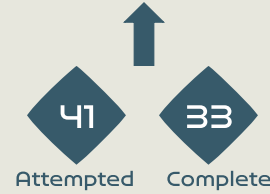
Line Breaks



Sweden

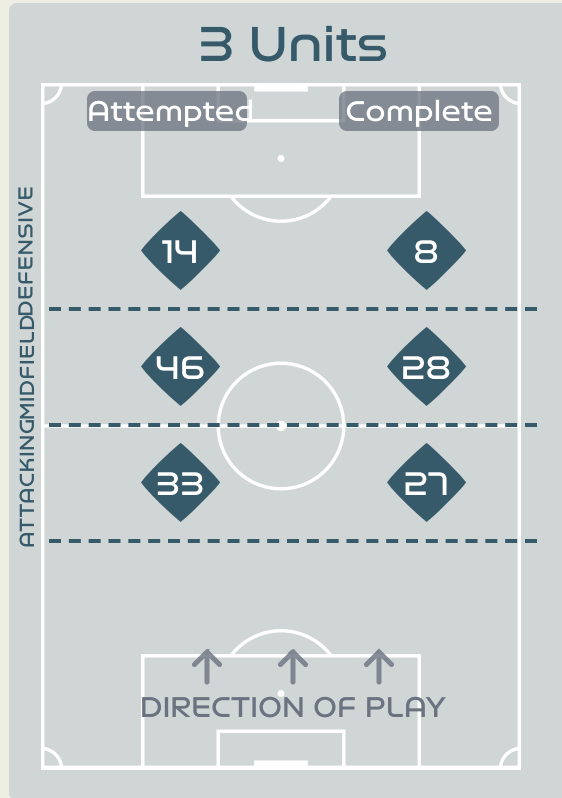
Attempted Line Breaks

128



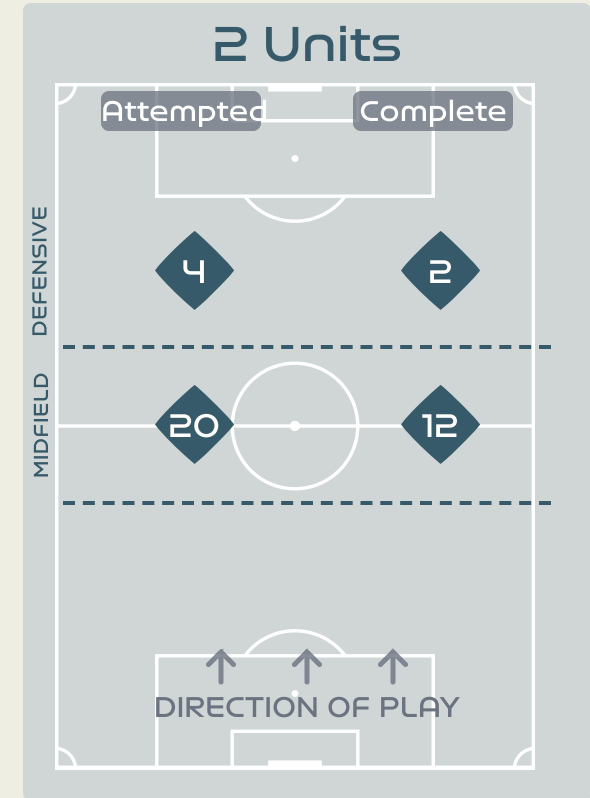
Attempted Line Breaks 11

Inside Shape	5
Outside Shape	6



Attempted Line Breaks 93

Inside Shape	59
Outside Shape	34



Attempted Line Breaks 24

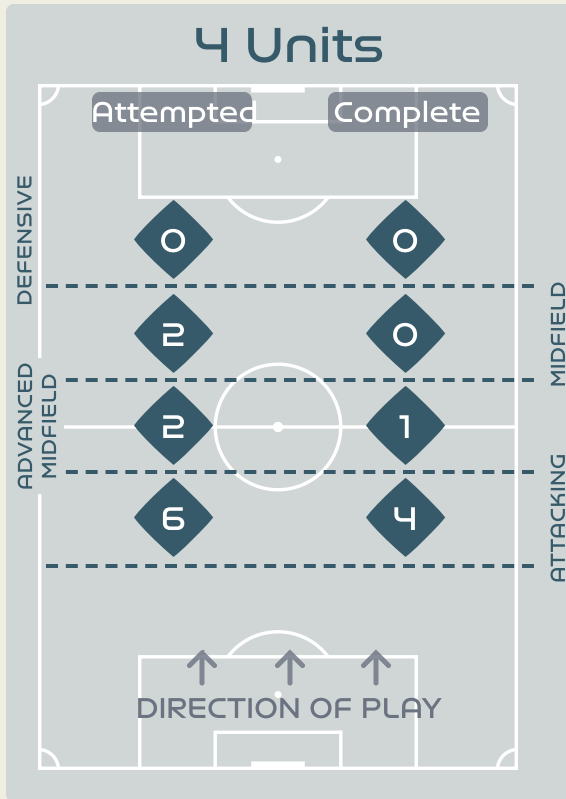
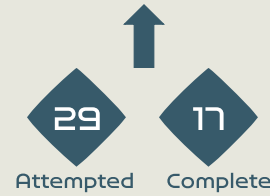
Inside Shape	17
Outside Shape	7

Line Breaks



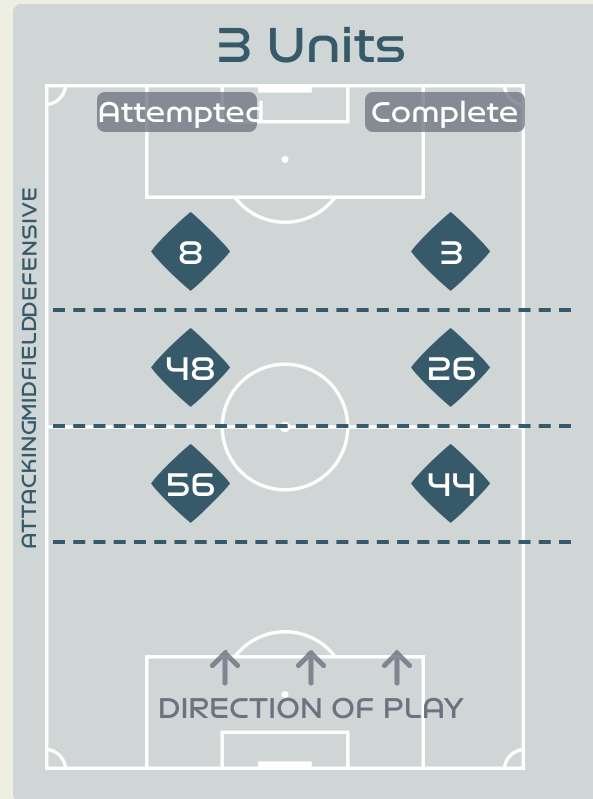
Attempted Line Breaks

151



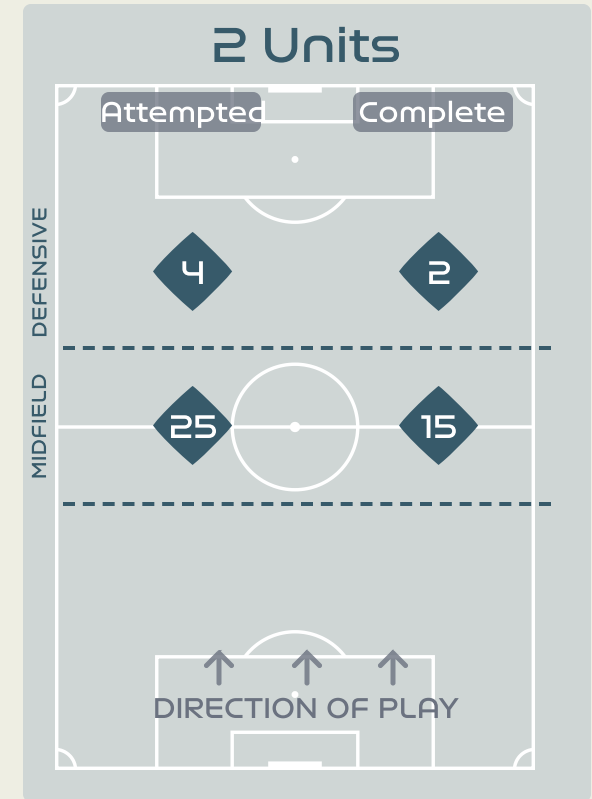
Attempted Line Breaks 10

Inside Shape	9
Outside Shape	1



Attempted Line Breaks 112

Inside Shape	66
Outside Shape	46



Attempted Line Breaks 29

Inside Shape	22
Outside Shape	7

Line Breaks



					4 Units				3 Units			2 Units		Direction			Distribution Type		
#	Player	Line Breaks Attempted	Line Breaks Completed	Line Break Completion %	Attacking Line	Attacking Midfield Line	Midfield Line	Defensive Line	Attacking Line	Midfield Line	Defensive Line	Midfield Line	Defensive Line	Through	Around	Over	Pass	Cross	Ball Progression
1	MUSOVIC Zecira	13	7	53%	0	0	0	0	5	6	1	1	0	0	1	12	13	0	0
2	ANDERSSON Jonna	11	4	36%	0	0	0	0	4	5	0	2	0	2	4	5	11	0	0
6	ERIKSSON Magdalena	13	10	76%	0	0	0	0	8	4	0	1	0	4	5	4	13	0	0
9	ASLLANI Kosovare	6	5	83%	0	0	0	0	0	3	0	1	2	3	2	1	6	0	0
11	BLACKSTENIUS Stina	2	2	100%	0	0	0	0	0	0	2	0	0	2	0	0	2	0	0
13	ILESTEDT Amanda	11	9	81%	0	0	0	1	6	1	0	3	0	3	4	4	11	0	0
14	BJORN Nathalie	33	20	60%	1	2	0	0	5	15	5	5	0	4	12	17	31	0	2
16	ANGELDAL Filippa	11	7	63%	0	0	0	1	2	4	1	3	0	5	3	3	11	0	0
18	ROLFO Fridolina	9	7	77%	0	0	0	1	0	4	3	0	1	6	1	2	9	0	0
19	KANERYD Johanna	0	0	0%	0	0	0	0	0	0	0	0	0	0	0	0	0	0	0
23	RUBENSSON Elin	8	6	75%	0	1	1	0	3	0	0	3	0	5	2	1	8	0	0
7	JANOBY Madelen	2	1	50%	0	0	0	0	0	1	0	0	1	1	1	0	1	1	0
10	JAKOBSSON Sofia	3	3	100%	0	0	1	0	0	0	2	0	0	2	1	0	2	0	1
15	BLOMQVIST Rebecka	1	1	100%	0	0	0	1	0	0	0	0	0	0	1	0	0	0	1
17	SEGER Caroline	4	4	100%	0	1	0	0	0	2	0	1	0	4	0	0	4	0	0
22	SCHOUGH Olivia	1	1	100%	0	0	0	0	0	1	0	0	0	0	0	1	1	0	0

Line Breaks



					4 Units				3 Units			2 Units		Direction			Distribution Type		
#	Player	Line Breaks Attempted	Line Breaks Completed	Line Break Completion %	Attacking Line	Attacking Midfield Line	Midfield Line	Defensive Line	Attacking Line	Midfield Line	Defensive Line	Midfield Line	Defensive Line	Through	Around	Over	Pass	Cross	Ball Progression
22	DURANTE Francesca	3	1	33%	0	0	0	0	2	1	0	0	0	1	0	2	3	0	0
4	DI GUGLIELMO Lucia	12	11	91%	0	0	0	0	8	1	0	3	0	1	10	1	11	0	1
5	LINARI Elena	5	5	100%	0	0	0	0	5	0	0	0	0	1	3	1	5	0	0
6	GIUGLIANO Manuela	13	5	38%	0	0	0	0	4	4	1	4	0	5	2	6	13	0	0
7	CANTORE Sofia	7	5	71%	0	0	0	0	0	4	2	0	1	1	5	1	5	0	2
8	BONANSEA Barbara	3	1	33%	0	0	1	0	0	1	1	0	0	2	0	1	3	0	0
14	BECCARI Chiara	1	1	100%	0	0	0	0	0	1	0	0	0	0	1	0	1	0	0
16	DRAGONI Giulia	5	4	80%	0	0	0	0	1	3	0	1	0	1	2	2	5	0	0
17	BOATTIN Lisa	22	10	45%	1	0	0	0	5	10	1	3	2	3	7	12	19	3	0
18	CARUSO Arianna	11	7	63%	1	1	0	0	3	1	2	3	0	4	4	3	10	0	1
23	SALVAI Cecilia	44	26	59%	3	1	1	0	21	13	1	4	0	6	18	20	41	0	3
9	GIACINTI Valentina	1	0	0%	0	0	0	0	0	1	0	0	0	1	0	0	1	0	0
15	SERTURINI Annamaria	3	2	66%	0	0	0	0	0	3	0	0	0	0	2	1	3	0	0
19	LENZINI Martina	13	9	69%	0	0	0	0	6	4	0	3	0	0	6	7	12	1	0
20	GREGGI Giada	4	4	100%	0	0	0	0	0	1	0	2	1	1	3	0	4	0	0
21	CERNOIA Valentina	4	4	100%	1	0	0	0	1	0	0	2	0	2	1	1	4	0	0

Passing Networks



#	Passes From ↓ to →	MUSOVIC Zecira	ANDERSSON Jonna	ERIKSSON Magdalena	ASLLANI Kosovare	BLACKSTENIUS Stina	ILESTEDT Amanda	BJORN Nathalie	ANGELDAL Filippa	ROLFO Fridolina	KANERYD Johanna	RUBENSSON Elin	JANOgy Madelen	JAKOBSSON Sofia	BLOMQVIST Rebecka	SEGER Caroline	SCHOUGH Olivia
1	MUSOVIC Zecira		0	2	1	0	3	2	0	1	0	0	0	2	0	0	0
2	ANDERSSON Jonna	2		0	3	0	0	2	0	6	0	5	0	0	0	1	0
6	ERIKSSON Magdalena	1	4		1	0	6	5	4	2	0	0	0	0	1	2	0
9	ASLLANI Kosovare	0	1	0		2	0	2	3	4	2	2	0	0	0	0	0
11	BLACKSTENIUS Stina	0	0	0	1		0	1	3	2	0	0	0	1	0	0	2
13	ILESTEDT Amanda	1	1	9	0	1		10	4	0	0	3	0	0	0	1	0
14	BJORN Nathalie	3	1	2	5	3	12		10	5	4	1	3	1	0	1	0
16	ANGELDAL Filippa	0	2	1	3	2	0	22		2	7	0	4	2	0	2	0
18	ROLFO Fridolina	0	9	3	4	2	1	4	1		1	3	0	0	0	0	0
19	KANERYD Johanna	0	0	0	2	0	2	3	7	1		1	0	0	0	0	0
23	RUBENSSON Elin	0	5	2	2	1	5	4	6	2	0		0	0	0	0	0
7	JANOgy Madelen	0	1	0	0	0	0	1	0	0	1	0		2	0	1	0
10	JAKOBSSON Sofia	0	0	0	0	1	0	0	1	0	0	0	2		0	0	0
15	BLOMQVIST Rebecka	0	0	1	0	0	0	1	0	0	0	0	0	0		1	0
17	SEGER Caroline	0	0	1	0	0	1	2	3	0	0	0	1	0	1		2
22	SCHOUGH Olivia	0	1	1	0	1	0	0	0	0	0	0	0	0	0	1	

Top 5 Player to Player Passers		
Player	Passed To	% of Total Team Passes
ANGELDAL Filippa	BJORN Nathalie	7.1%
BJORN Nathalie	ILESTEDT Amanda	3.9%
ILESTEDT Amanda	BJORN Nathalie	3.2%
BJORN Nathalie	ANGELDAL Filippa	3.2%
ILESTEDT Amanda	ERIKSSON Magdalena	2.9%

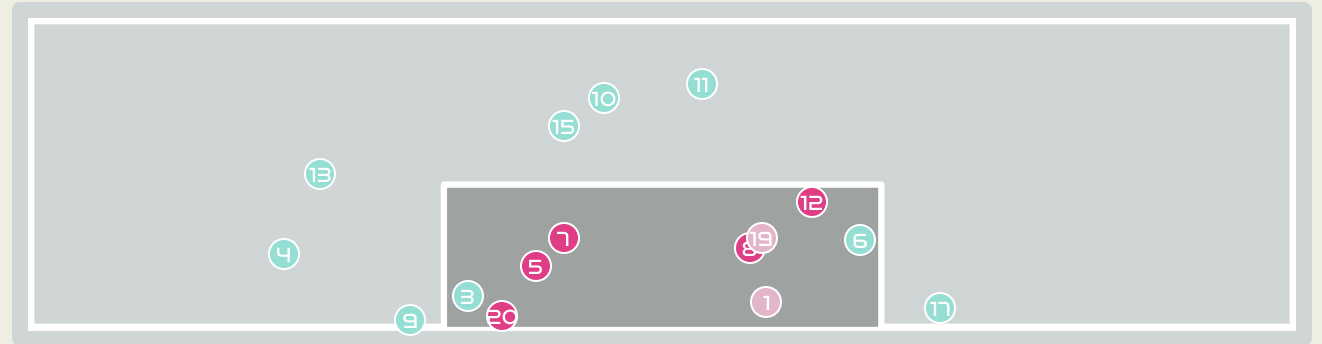
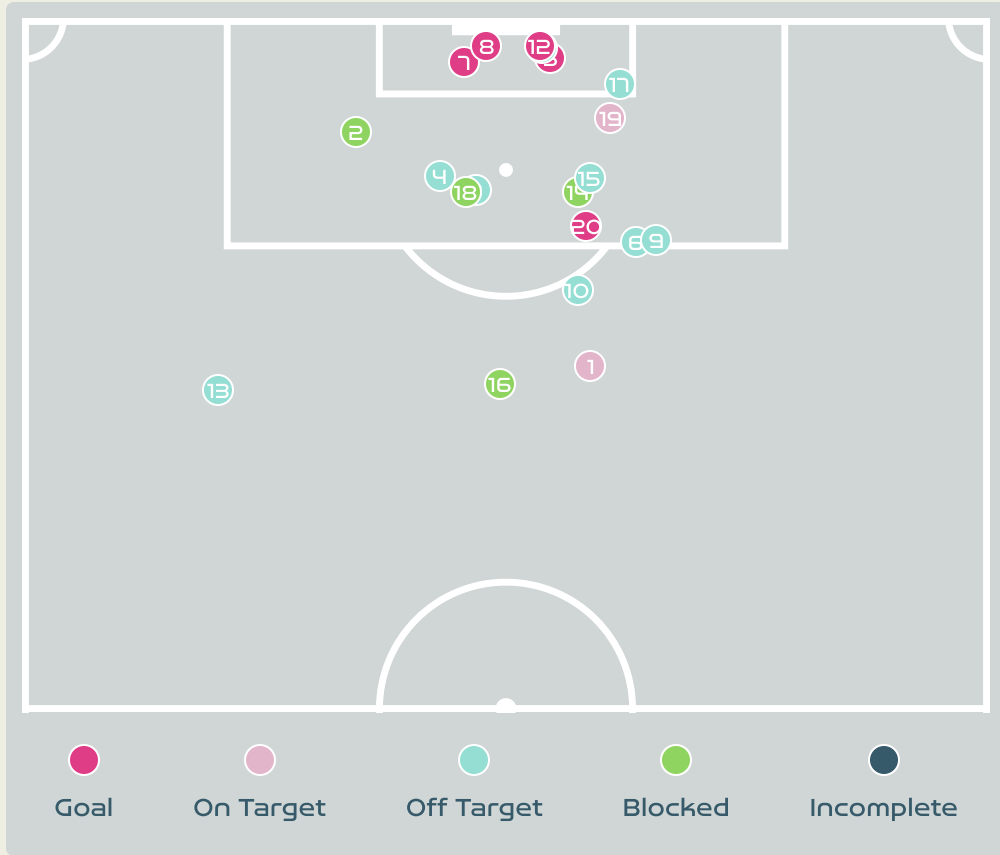







Passing Networks

#	Passes From ↓ to →	DURANTE Francesca	DI GUGLIELMO Lucia	LINARI Elena	GIUGLIANO Manuela	CANTORE Sofia	BONANSEA Barbara	BECCARI Chiara	DRAGONI Giulia	BOATTIN Lisa	CARUSO Arianna	SALVAI Cecilia	GIACINTI Valentina	SERTURINI Annamaria	LENZINI Martina	GREGGI Giada	CERNOIA Valentina
22	DURANTE Francesca		4	11	1	0	0	0	0	1	2	21	0	0	0	0	2
4	DI GUGLIELMO Lucia	4		4	4	7	1	4	1	0	1	1	0	0	0	0	0
5	LINARI Elena	6	2		4	0	0	0	0	2	0	15	0	0	6	2	2
6	GIUGLIANO Manuela	0	7	4		3	0	2	4	3	2	9	0	1	0	2	0
7	CANTORE Sofia	0	3	1	1		0	2	3	2	0	1	0	0	3	3	0
8	BONANSEA Barbara	0	1	0	0	1		0	1	0	1	0	0	0	0	0	0
14	BECCARI Chiara	0	1	0	5	1	1		4	0	1	2	0	0	0	0	1
16	DRAGONI Giulia	0	5	0	5	1	2	3		3	3	2	0	0	0	0	0
17	BOATTIN Lisa	0	0	0	3	3	3	1	1		5	6	0	1	1	1	1
18	CARUSO Arianna	0	0	1	1	1	2	2	3	0		4	0	2	0	1	0
23	SALVAI Cecilia	12	0	7	8	0	4	4	2	14	3		1	0	0	1	1
9	GIACINTI Valentina	0	0	0	0	0	0	0	0	0	0	0		0	0	0	2
15	SERTURINI Annamaria	0	0	0	1	1	0	1	0	0	1	1	0		1	0	0
19	LENZINI Martina	1	0	3	0	1	0	1	0	0	0	1	0	5		3	0
20	GREGGI Giada	0	0	1	1	4	0	0	0	1	0	0	0	1	3		2
21	CERNOIA Valentina	3	0	0	2	0	0	0	0	1	0	2	0	0	5	1	

Top 5 Player to Player Passers		
Player	Passed To	% of Total Team Passes
DURANTE Francesca	SALVAI Cecilia	5.9%
LINARI Elena	SALVAI Cecilia	4.2%
SALVAI Cecilia	BOATTIN Lisa	3.9%
SALVAI Cecilia	DURANTE Francesca	3.4%
DURANTE Francesca	LINARI Elena	3.1%

Attempts at Goal



Key	Outcome	Shots
	Goals	5
	On Target	2
	Off Target	9
	Blocked	4
	Incomplete	0

Attempts at Goal



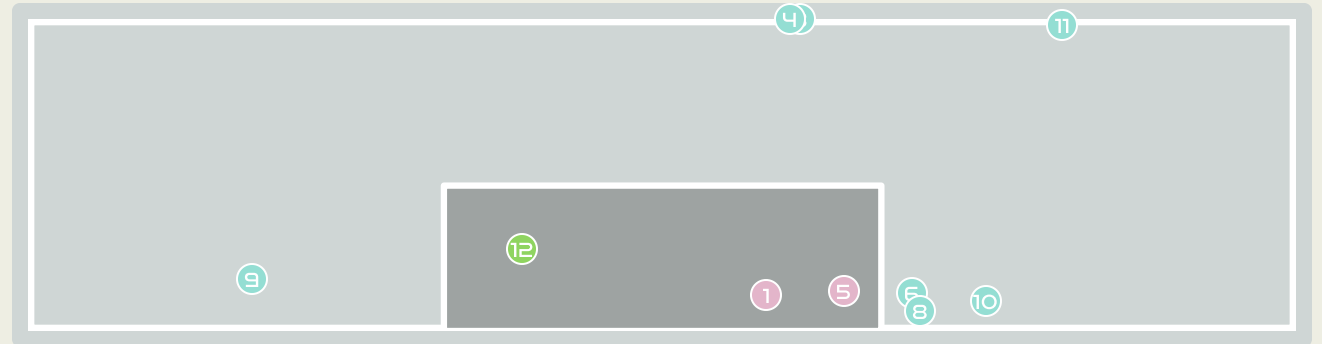
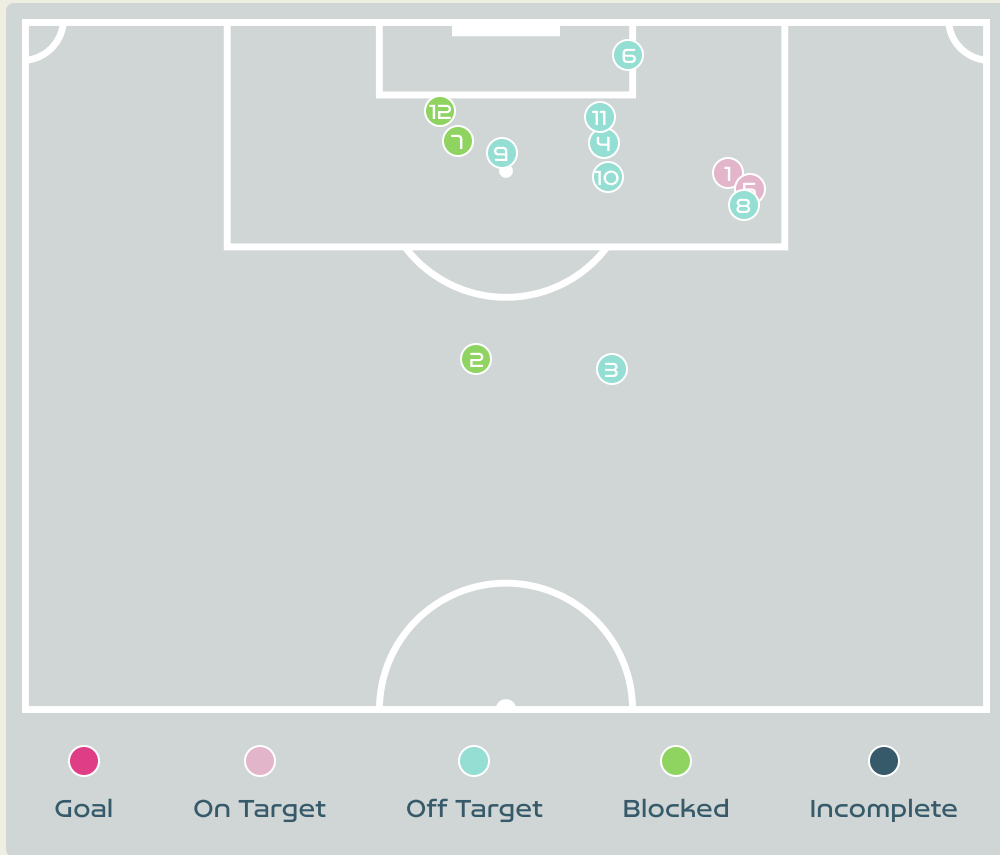
Time	Player	Outcome	Body Part	Delivery Type
22	23 RUBENSSON Elin	On Target - Saved	Right Foot	Loose Ball
27	18 ROLFO Fridolina	Incomplete - Blocked	Left Foot	Pass
27	18 ROLFO Fridolina	Deflected Off Target - Defensive Event	Right Foot	Pass
29	14 BJORN Nathalie	Off Target	Right Foot	Loose Ball
38	13 ILESTEDT Amanda	On Target - Goal	Head	Corner
42	18 ROLFO Fridolina	Deflected Off Target - Defensive Event	Right Foot	Loose Ball
43	18 ROLFO Fridolina	On Target - Goal	Lower Body	Loose Ball
45	11 BLACKSTENIUS Stina	On Target - Goal	Right Foot	Loose Ball
46	16 ANGELDAL Filippa	Off Target	Right Foot	Interception
47	18 ROLFO Fridolina	Deflected Off Target - Defensive Event	Left Foot	Pass
48	13 ILESTEDT Amanda	Deflected Off Target - Defensive Event	Head	Corner
49	13 ILESTEDT Amanda	On Target - Goal	Head	Corner
49	2 ANDERSSON Jonna	Off Target	Left Foot	Loose Ball
54	23 RUBENSSON Elin	Incomplete - Blocked	Right Foot	Loose Ball
54	23 RUBENSSON Elin	Off Target	Right Foot	Loose Ball
56	16 ANGELDAL Filippa	Incomplete - Blocked	Right Foot	Pass
61	11 BLACKSTENIUS Stina	Off Target	Right Foot	Pass






Attempts at Goal



Time	Player	Outcome	Body Part	Delivery Type
77	22 SCHOUGH Olivia	Incomplete - Blocked	Right Foot	Pass
87	10 JAKOBSSON Sofia	On Target - Saved	Right Foot	Pass
94	15 BLOMQUIST Rebecka	On Target - Goal	Left Foot	Ball Progression

Attempts at Goal



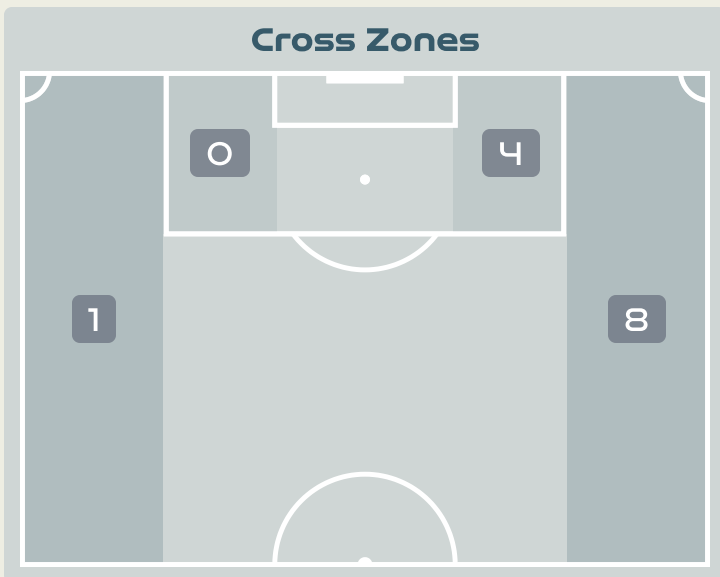
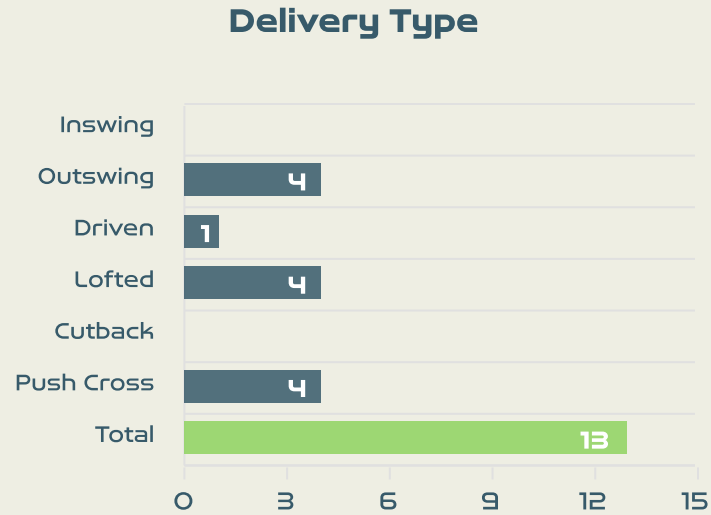
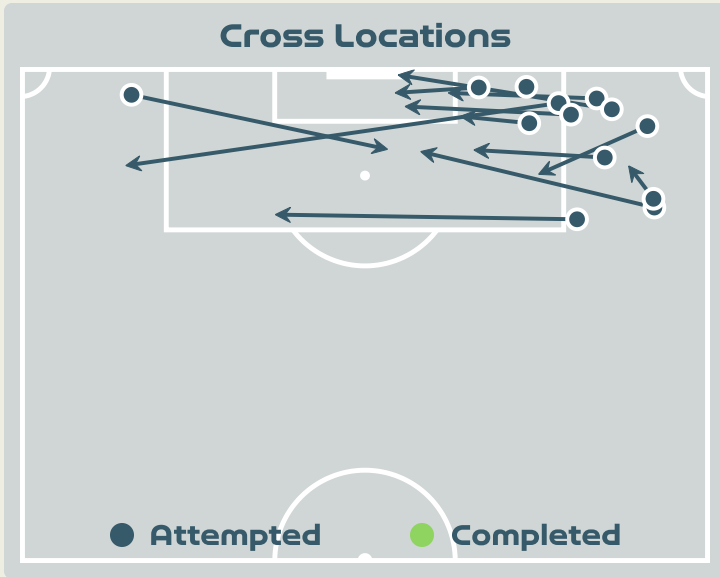
Key	Outcome	Shots
	Goals	0
	On Target	2
	Off Target	7
	Blocked	3
	Incomplete	0



Attempts at Goal

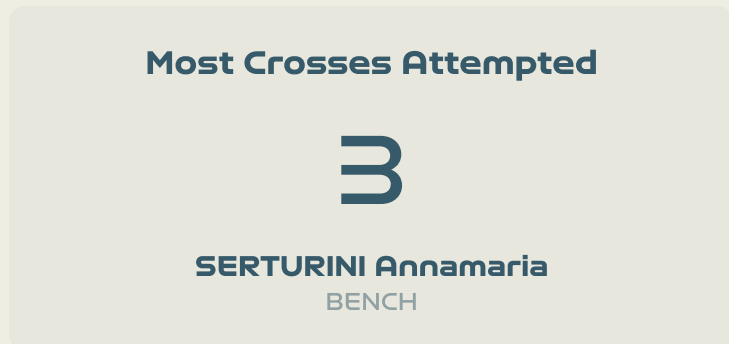
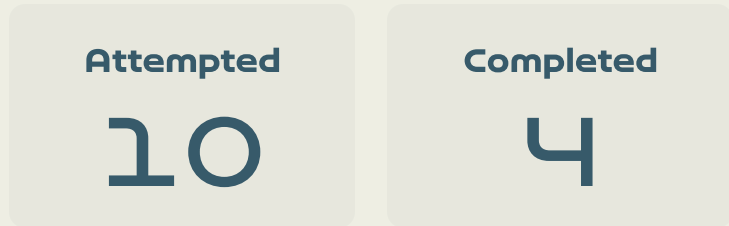
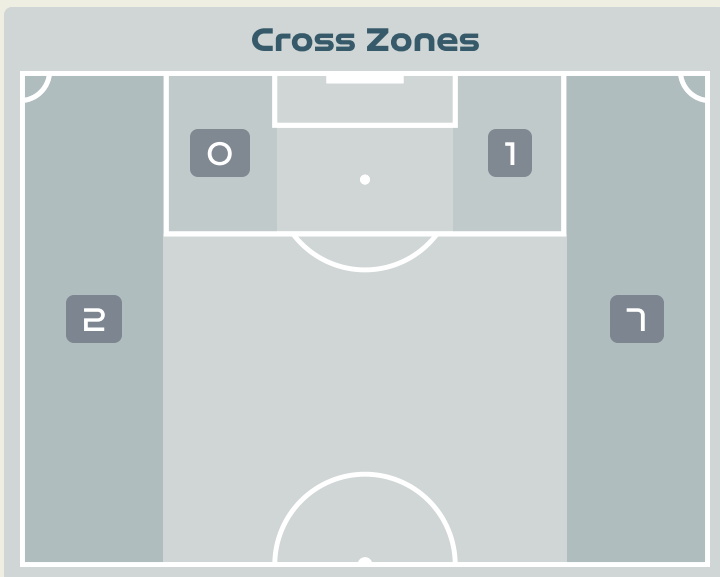
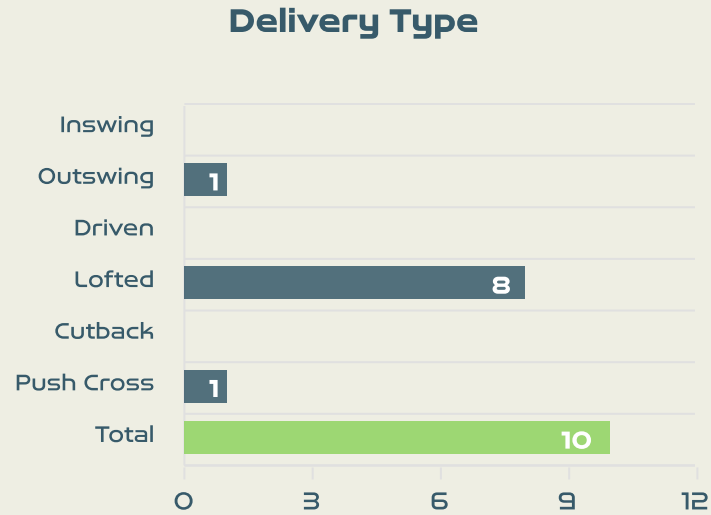
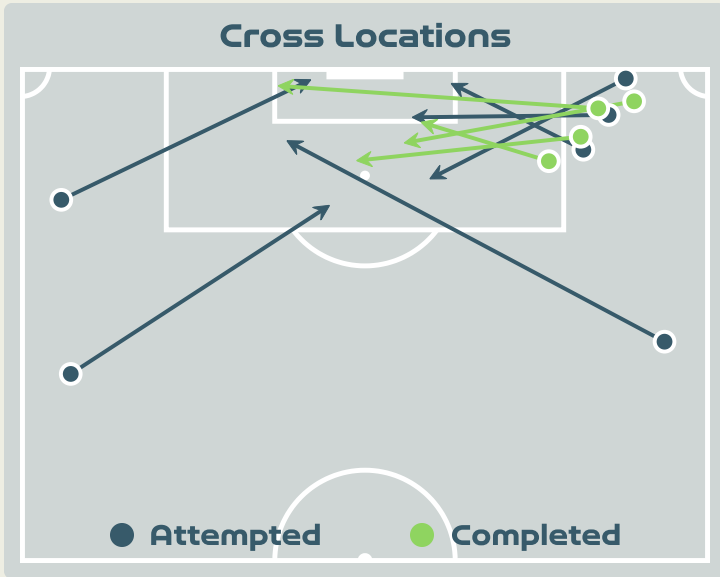
Time	Player	Outcome	Body Part	Delivery Type
0	7 CANTORE Sofia	On Target - Saved	Right Foot	Pass
2	18 CARUSO Arianna	Incomplete - Blocked	Right Foot	Loose Ball
2	6 GIUGLIANO Manuela	Deflected Off Target - Defensive Event	Right Foot	Pass
2	18 CARUSO Arianna	Off Target	Right Foot	Corner
16	7 CANTORE Sofia	On Target - Saved	Right Foot	Pass
16	4 DI GUGLIELMO Lucia	Off Target	Right Foot	Other
48	14 BECCARI Chiara	Incomplete - Blocked	Right Foot	Loose Ball
59	7 CANTORE Sofia	Off Target	Right Foot	Pass
64	7 CANTORE Sofia	Off Target	Head	Cross
68	20 GREGGI Giada	Deflected Off Target - Defensive Event	Right Foot	Pass
86	9 GIACINTI Valentina	Off Target	Right Foot	Cross
94	17 BOATTIN Lisa	On Target - Blocked	Left Foot	Corner

Crosses (Open Play)



#	Player	Inswing	Outswing	Driven	Lofted	Cutback	Push Cross	Total Attempted
1	MUSOVIC Zecira	0	0	0	0	0	0	0
2	ANDERSSON Jonna	0	1	0	0	0	0	1
6	ERIKSSON Magdalena	0	0	0	0	0	0	0
9	ASLLANI Kosovare	0	0	1	0	0	0	1
11	BLACKSTENIUS Stina	0	0	0	0	0	1	1
13	ILESTEDT Amanda	0	0	0	0	0	0	0
14	BJORN Nathalie	0	1	0	0	0	0	1
16	ANGELDAL Filippa	0	0	0	1	0	0	1
18	ROLFO Fridolina	0	0	0	0	0	0	0
19	KANERYD Johanna	0	0	0	1	0	3	4
23	RUBENSSON Elin	0	0	0	0	0	0	0
7	JANOBY Madelen	0	1	0	0	0	0	1
10	JAKOBSSON Sofia	0	1	0	2	0	0	3
15	BLOMQVIST Rebecka	0	0	0	0	0	0	0
17	SEGER Caroline	0	0	0	0	0	0	0
22	SCHOUGH Olivia	0	0	0	0	0	0	0

Crosses (Open Play)



#	Player	Inswing	Outswing	Driven	Lofted	Cutback	Push Cross	Total Attempted
22	DURANTE Francesca	0	0	0	0	0	0	0
4	DI GUGLIELMO Lucia	0	0	0	0	0	0	0
5	LINARI Elena	0	0	0	0	0	0	0
6	GIUGLIANO Manuela	0	0	0	0	0	0	0
7	CANTORE Sofia	0	0	0	1	0	1	2
8	BONANSEA Barbara	0	0	0	0	0	0	0
14	BECCARI Chiara	0	0	0	0	0	0	0
16	DRAGONI Giulia	0	0	0	0	0	0	0
17	BOATTIN Lisa	0	1	0	1	0	0	2
18	CARUSO Arianna	0	0	0	0	0	0	0
23	SALVAI Cecilia	0	0	0	0	0	0	0
9	GIACINTI Valentina	0	0	0	1	0	0	1
15	SERTURINI Annamaria	0	0	0	3	0	0	3
19	LENZINI Martina	0	0	0	1	0	0	1
20	GREGGI Giada	0	0	0	1	0	0	1
21	CERNOIA Valentina	0	0	0	0	0	0	0

Offering to Receive

345

Total Offers Made

119

Total Offers Received

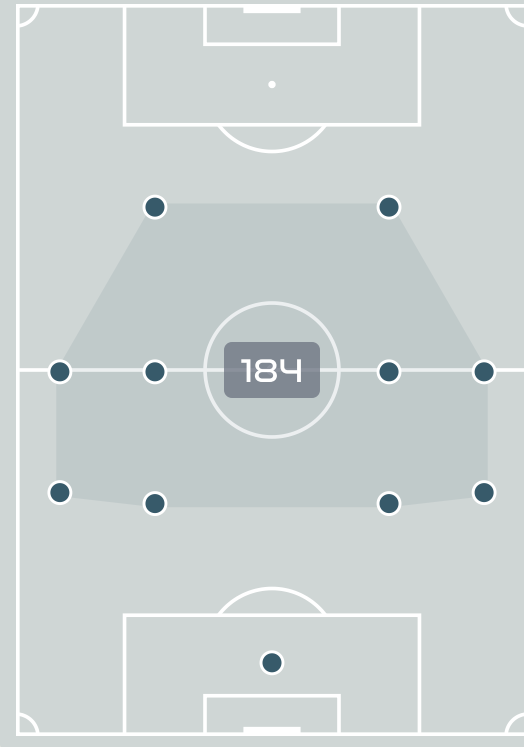
Most Offers

50

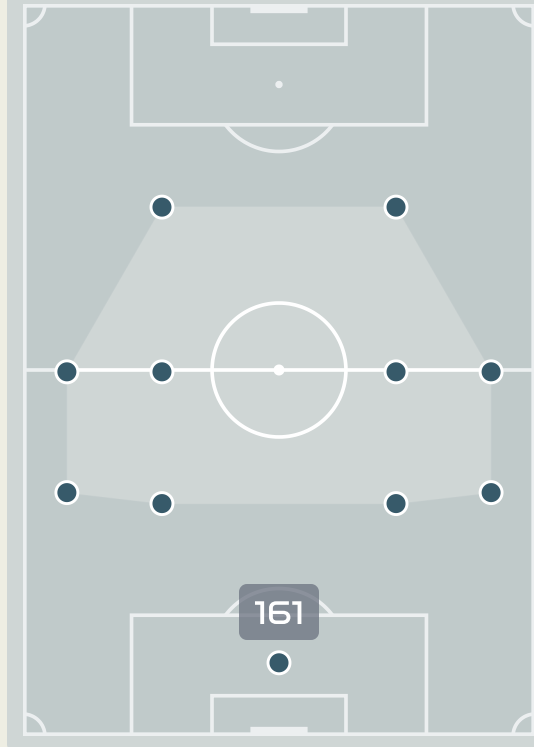
KANERYD Johanna
ATTACKING MIDFIELD RIGHT

#	Player	Offers Made	Offers Received	% Made & Received
1	MUSOVIC Zecira	5	2	40%
2	ANDERSSON Jonna	26	8	30.8%
6	ERIKSSON Magdalena	19	7	36.8%
9	ASLLANI Kosovare	42	11	26.2%
11	BLACKSTENIUS Stina	33	4	12.1%
13	ILESTEDT Amanda	11	7	63.6%
14	BJORN Nathalie	16	13	81.2%
16	ANGELDAL Filippa	24	13	54.2%
18	ROLFO Fridolina	21	12	57.1%
19	KANERYD Johanna	50	12	24%
23	RUBENSSON Elin	39	10	25.6%
7	JANOgy Madelen	6	5	83.3%
10	JAKOBSSON Sofia	20	8	40%
15	BLOMQVIST Rebecka	9	3	33.3%
17	SEGER Caroline	9	3	33.3%
22	SCHOUGH Olivia	15	1	6.7%

Offers Made Inside Shape



Offers Made Outside Shape



135

Offers Made in Final Third

164

Offers Made in Middle Third

46

Offers Made in Defensive Third



Offering to Receive

517
Total Offers Made

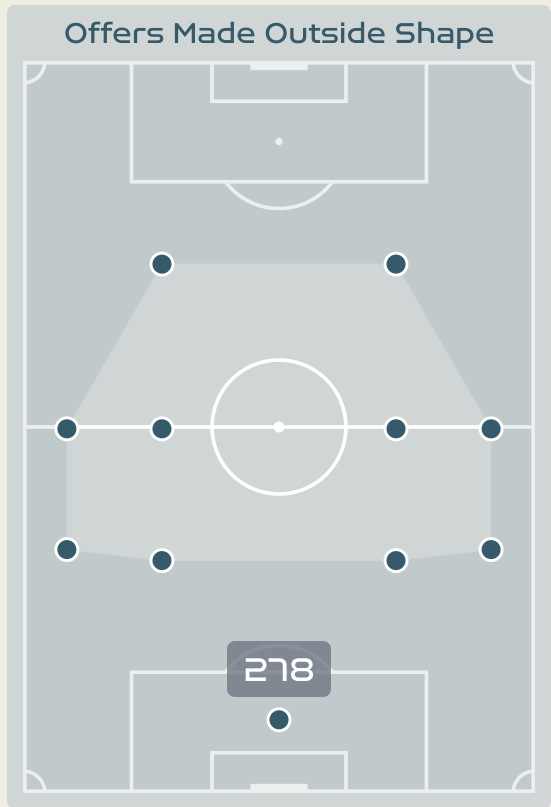
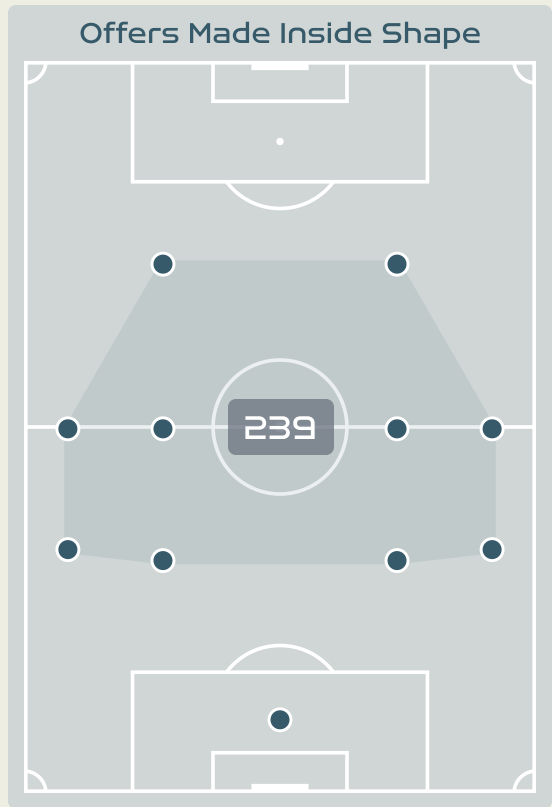
158
Total Offers Received

Most Offers
79
GIUGLIANO Manuela
DEFENSIVE MIDFIELD CENTRE RIGHT

144
Offers Made in Final Third

255
Offers Made in Middle Third

118
Offers Made in Defensive Third

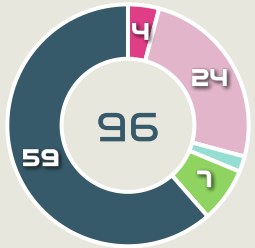


#	Player	Offers Made	Offers Received	% Made & Received
22	DURANTE Francesca	14	10	71.4%
4	DI GUGLIELMO Lucia	31	12	38.7%
5	LINARI Elena	51	18	35.3%
6	GIUGLIANO Manuela	79	24	30.4%
7	CANTORE Sofia	39	5	12.8%
8	BONANSEA Barbara	42	11	26.2%
14	BECCARI Chiara	42	15	35.7%
16	DRAGONI Giulia	29	10	34.5%
17	BOATTIN Lisa	53	16	30.2%
18	CARUSO Arianna	58	7	12.1%
23	SALVAI Cecilia	15	9	60%
9	GIACINTI Valentina	10	1	10%
15	SERTURINI Annamaria	21	7	33.3%
19	LENZINI Martina	9	5	55.6%
20	GREGGI Giada	13	6	46.2%
21	CERNOIA Valentina	11	2	18.2%

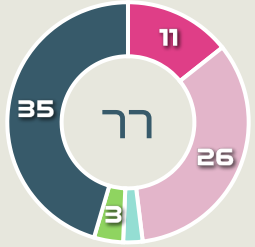
Movement to Receive

Movement Types by Phase

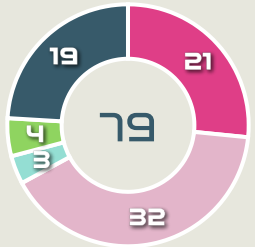
Final Third Phase



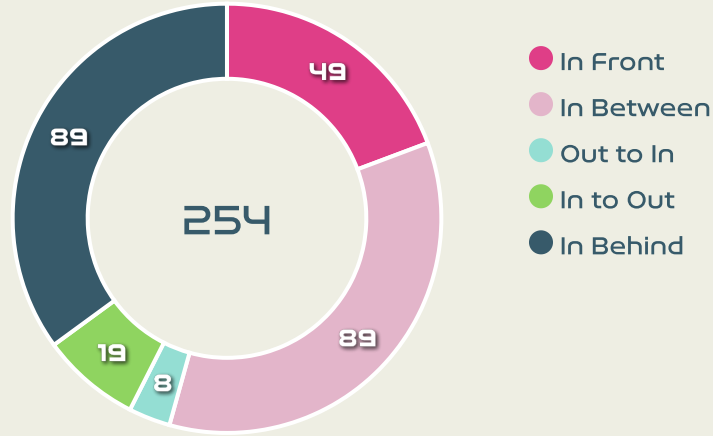
Progression Phase



Build Up Phase



All Movement Types

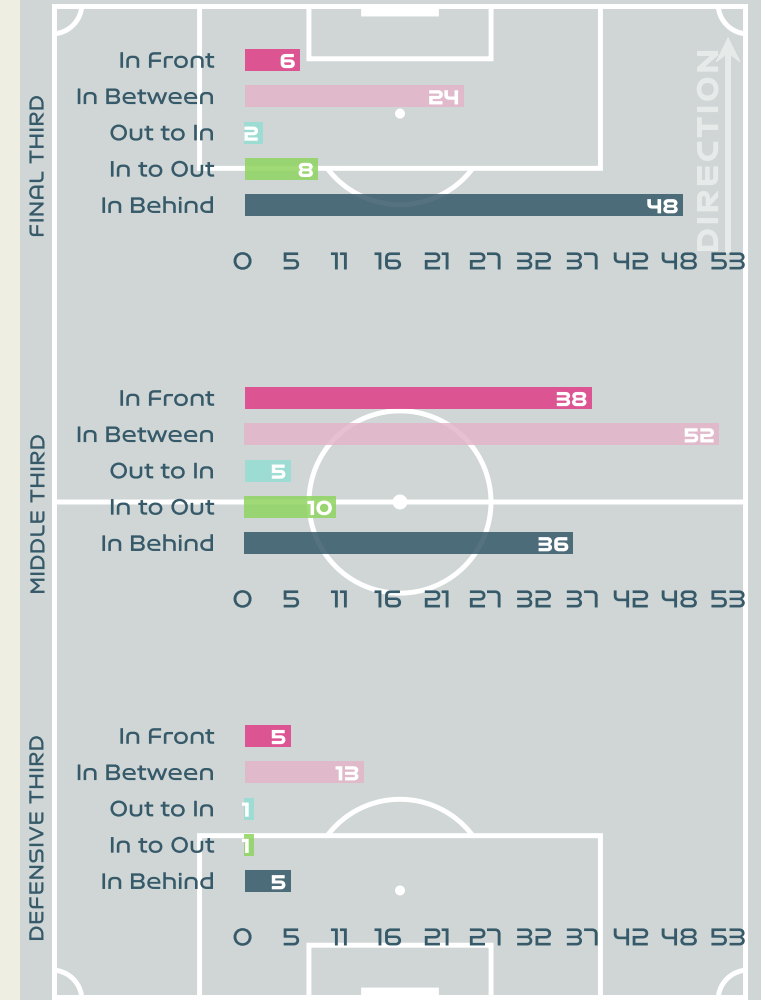


- In Front
- In Between
- Out to In
- In to Out
- In Behind

Top Ranked Players

Type	Player	Movements
In Front	23 RUBENSSON Elin	19
In Between	9 ASLLANI Kosovare	23
Out to In	9 ASLLANI Kosovare	1
In to Out	9 ASLLANI Kosovare	6
In Behind	11 BLACKSTENIUS Stina	24

Movement Types Pitch Third

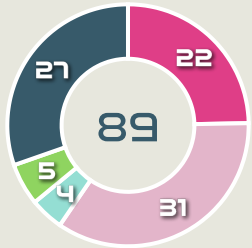




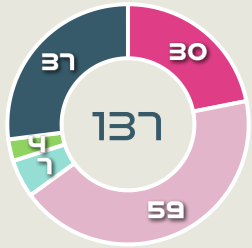
Movement to Receive

Movement Types by Phase

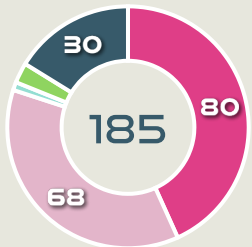
Final Third Phase



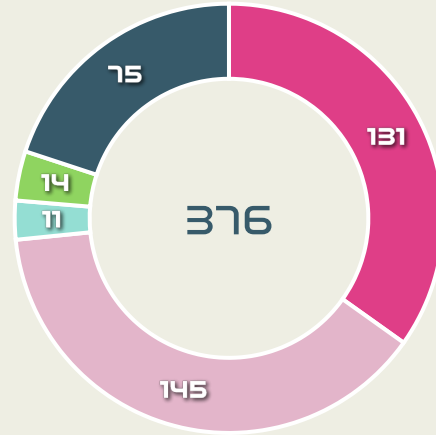
Progression Phase



Build Up Phase



All Movement Types

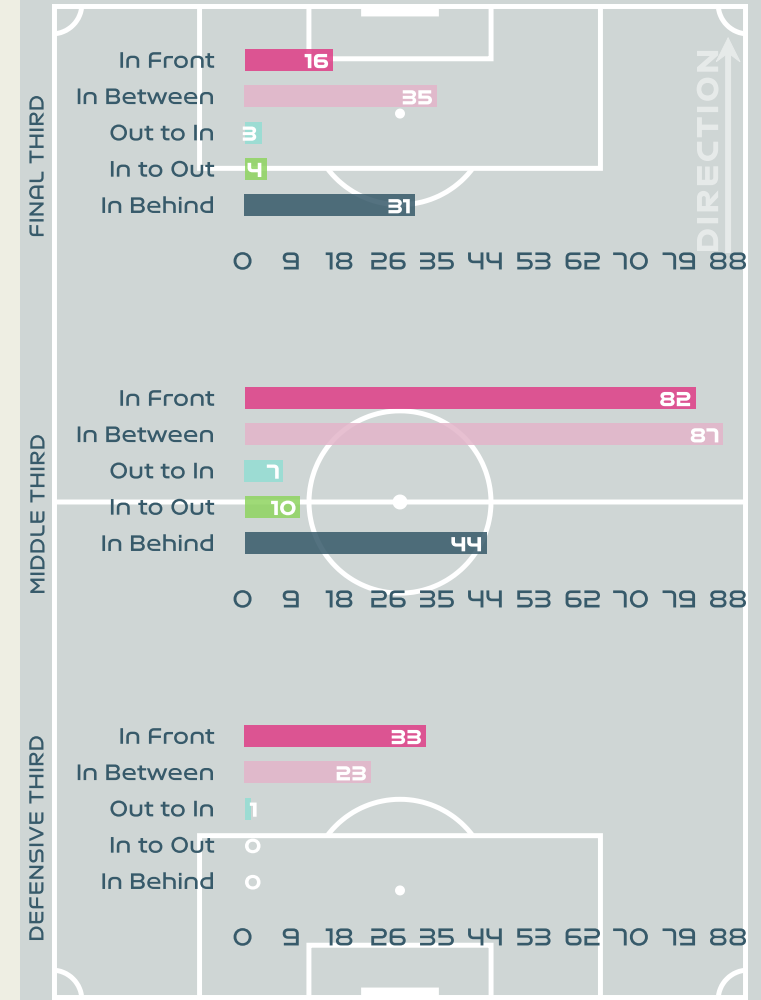


- In Front
- In Between
- Out to In
- In to Out
- In Behind

Top Ranked Players

Type	Player	Movements
In Front	6 GIUGLIANO Manuela	35
In Between	6 GIUGLIANO Manuela	36
Out to In	14 BECCARI Chiara	3
In to Out	14 BECCARI Chiara	5
In Behind	7 CANTORE Sofia	26

Movement Types Pitch Third





OUT OF POSSESSION



Sweden v Italy



Defensive Actions

95

Forced Turnovers

55

Possession Regained

17

Interceptions

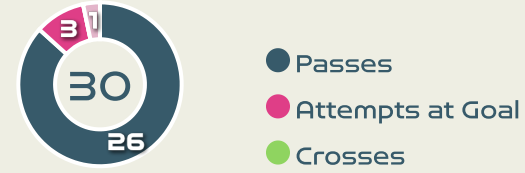
34

Tackles

3.51

Possession Actions / Defensive Action

Blocks

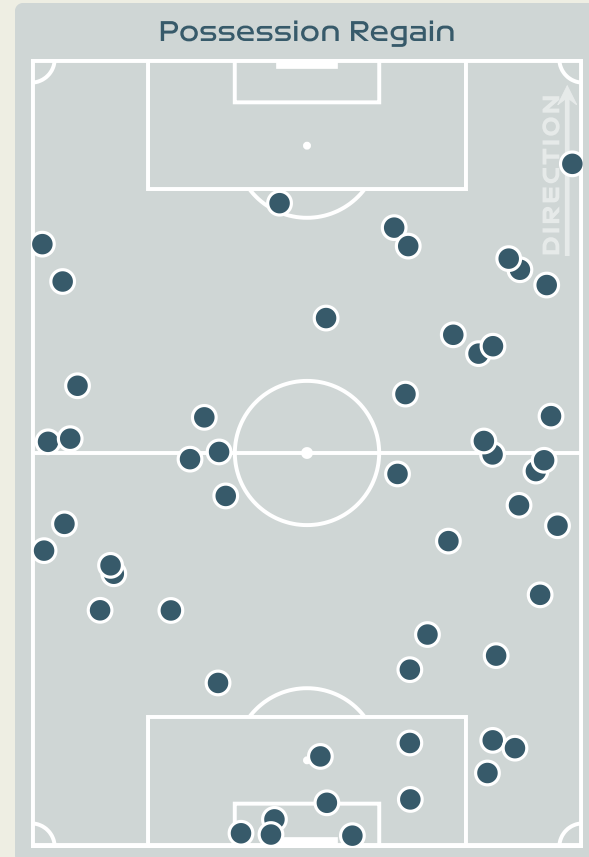
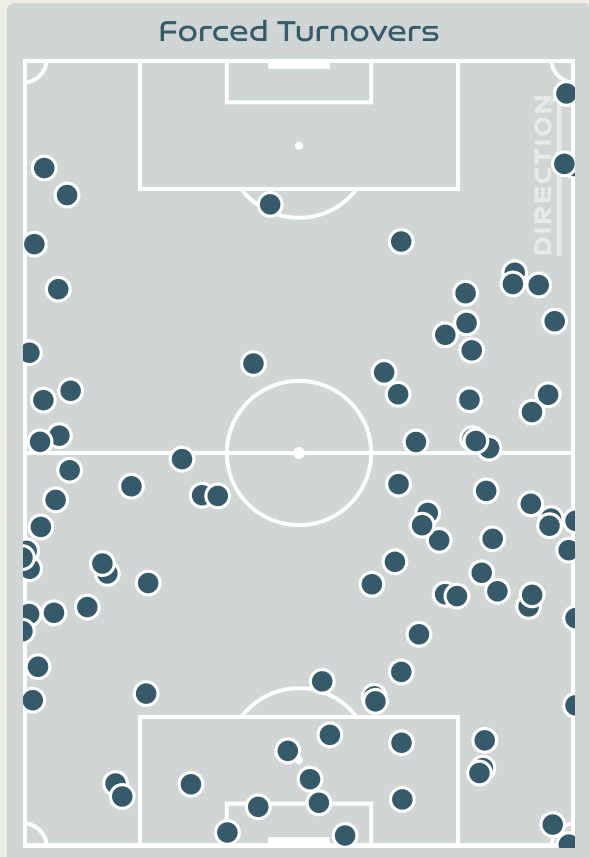


Possession Contests



Most Possession Regains

11
BJORN Nathalie
 RIGHT BACK



#	Player	Total Possession Regains
1	MUSOVIC Zecira	4
2	ANDERSSON Jonna	3
6	ERIKSSON Magdalena	1
9	ASLLANI Kosovare	3
11	BLACKSTENIUS Stina	1
13	ILESTEDT Amanda	4
14	BJORN Nathalie	11
16	ANGELDAL Filippa	9
18	ROLFO Fridolina	1
19	KANERYD Johanna	6
23	RUBENSSON Elin	8
7	JANOBY Madelen	1
10	JAKOBSSON Sofia	0
15	BLOMQVIST Rebecka	0
17	SEGER Caroline	0
22	SCHOUGH Olivia	3



Defensive Actions

101

Forced Turnovers

68

Possession Regained

11

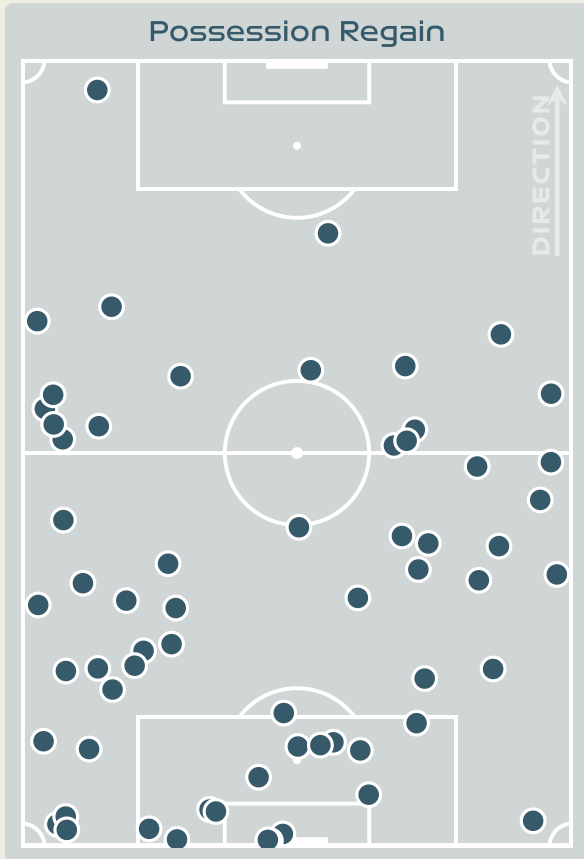
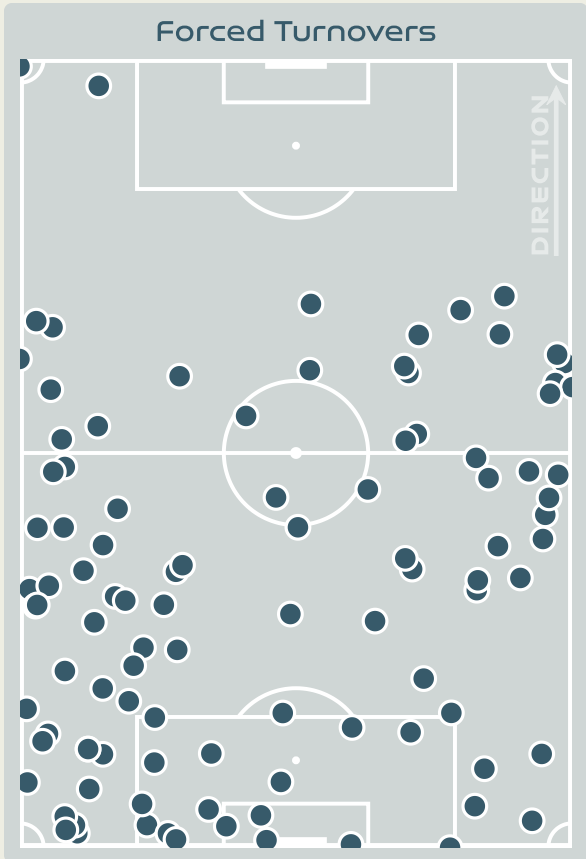
Interceptions

45

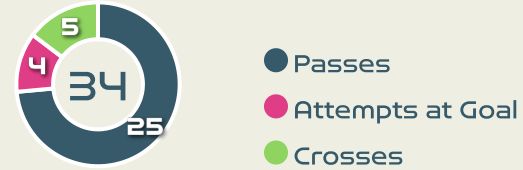
Tackles

3.22

Possession Actions / Defensive Action



Blocks



Possession Contests



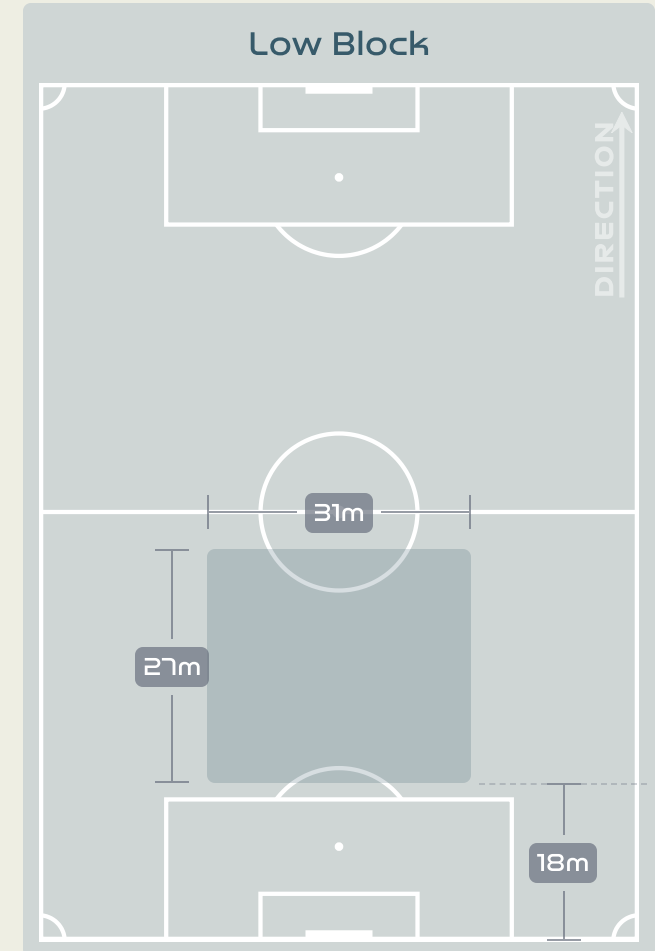
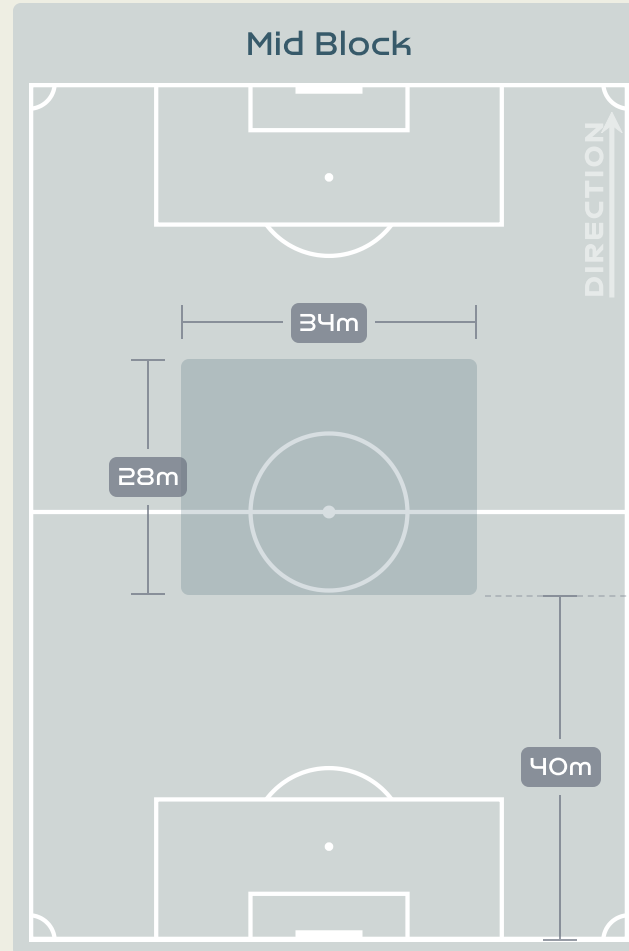
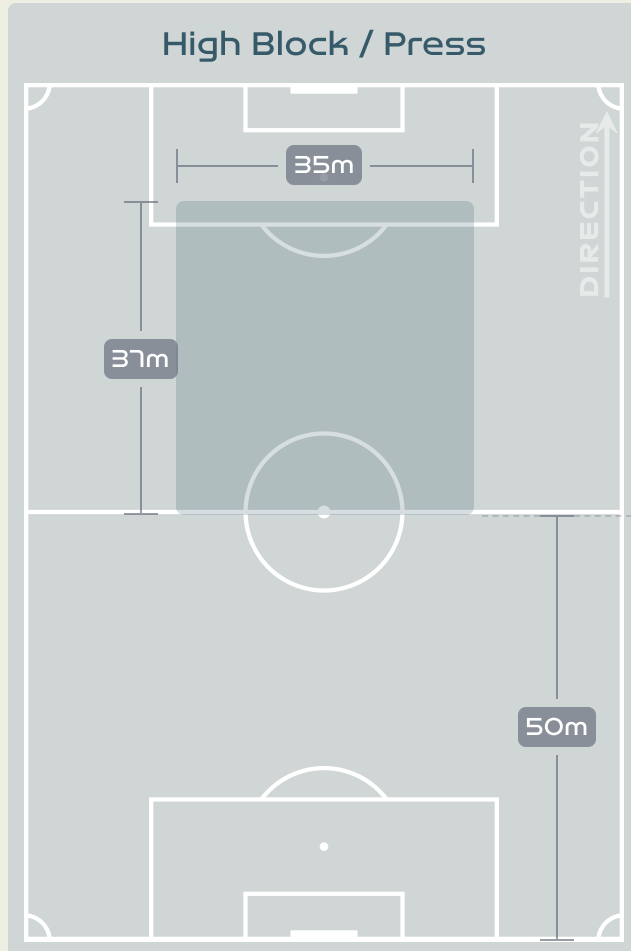
Most Possession Regains

11

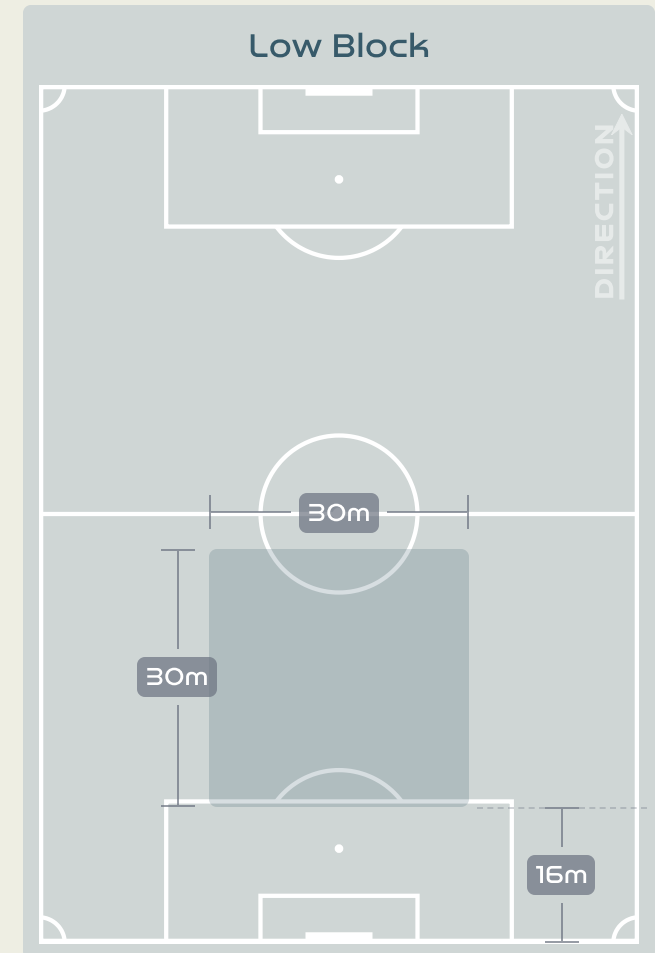
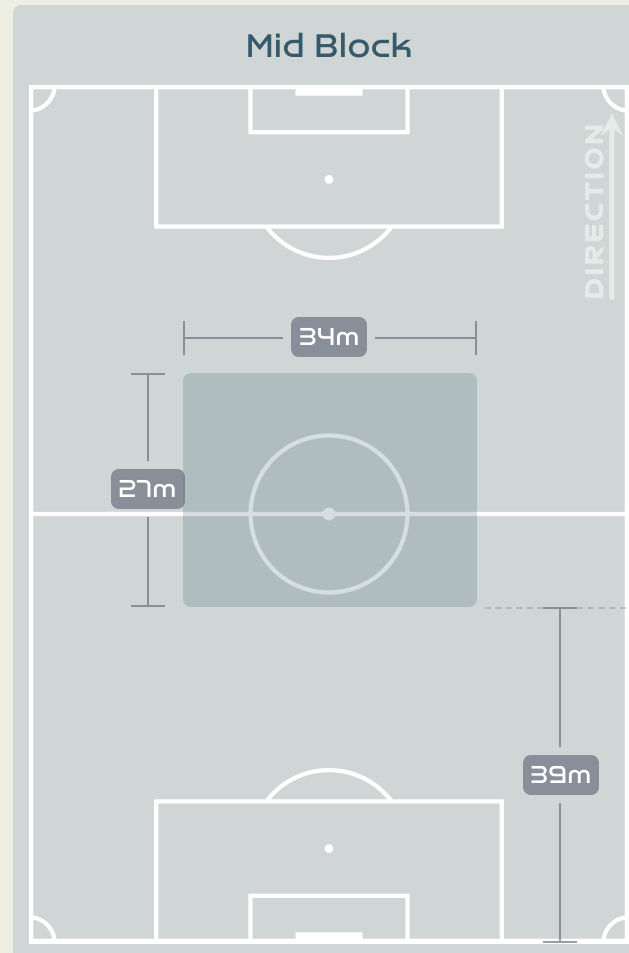
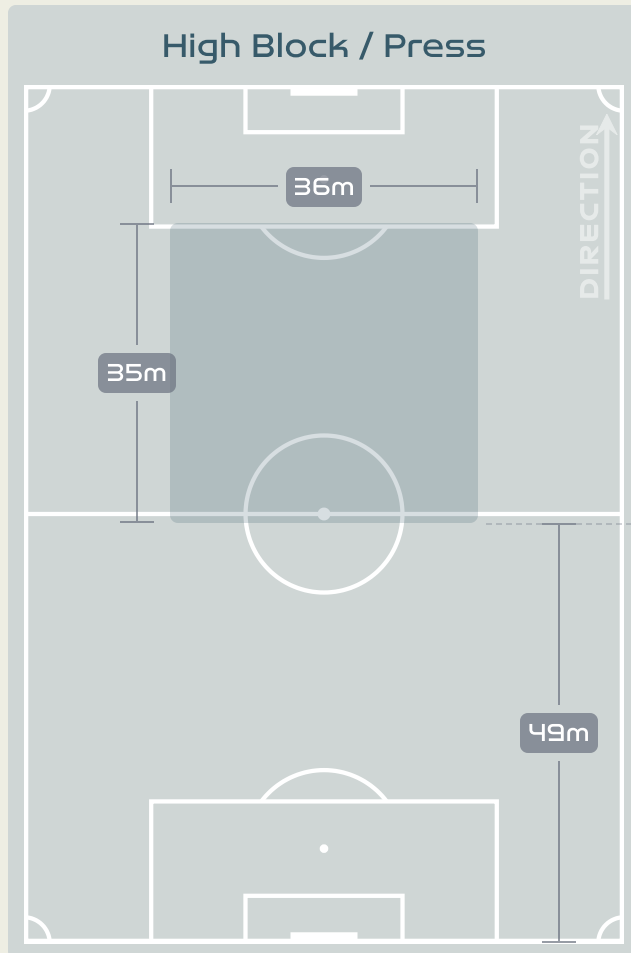
CARUSO Arianna
DEFENSIVE MIDFIELD CENTRE LEFT

#	Player	Total Possession Regains
22	DURANTE Francesca	7
4	DI GUGLIELMO Lucia	4
5	LINARI Elena	7
6	GIUGLIANO Manuela	8
7	CANTORE Sofia	1
8	BONANSEA Barbara	2
14	BECCARI Chiara	1
16	DRAGONI Giulia	3
17	BOATTIN Lisa	8
18	CARUSO Arianna	11
23	SALVAI Cecilia	6
9	GIACINTI Valentina	0
15	SERTURINI Annamaria	3
19	LENZINI Martina	1
20	GREGGI Giada	2
21	CERNOIA Valentina	4

Defensive Line Height & Team Length



Defensive Line Height & Team Length



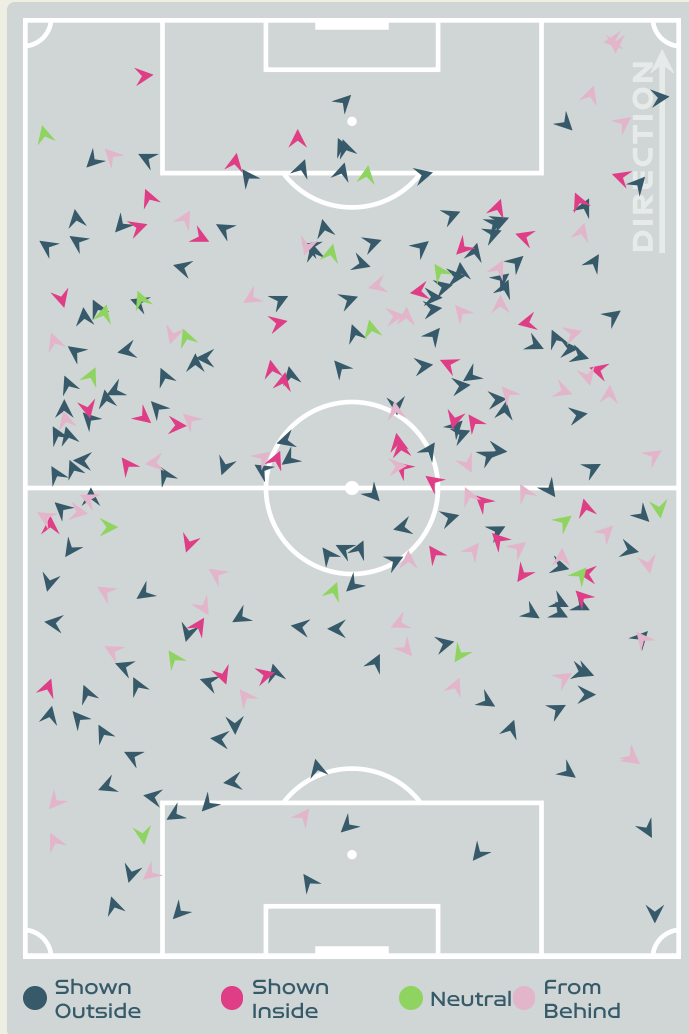
Defensive Pressure



Sweden



Italy



266	Total Pressures	253
60	Direct Pressures	69
1.43s	Avg Pressure Duration	1.38s
95	Forced Turnovers	101
10.18s	Ball Recovery Time	8.48s
124	Pushing on into Pressing	85
232	Pushing on	179
43	Pressing Direction Inside	36
149	Pressing Direction Outside	128

Most Direct Pressures

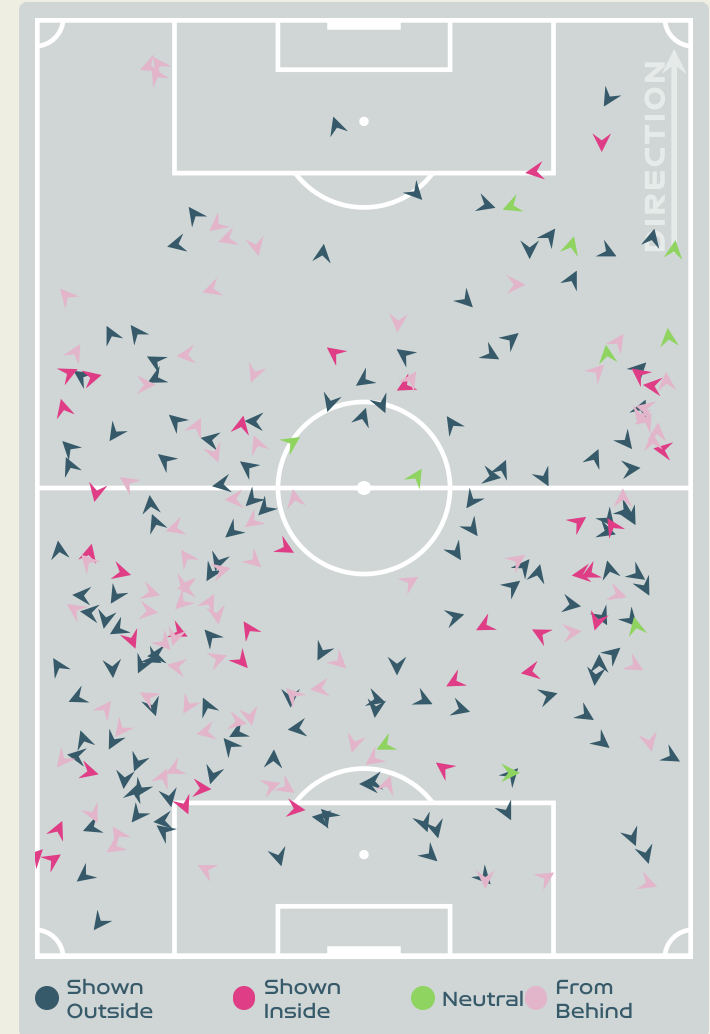
13

RUBENSSON Elin
DEFENSIVE MIDFIELD CENTRE LEFT

Most Direct Pressures

11

CARUSO Arianna
DEFENSIVE MIDFIELD CENTRE LEFT





GOALKEEPING



Sweden v Italy

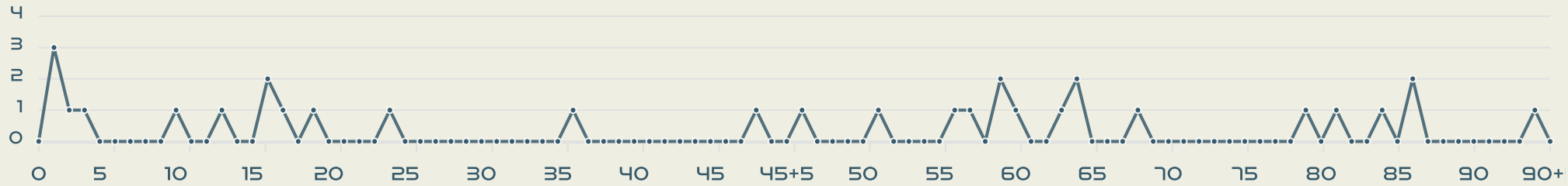


Goalkeeping Involvement



Sweden

Sweden GK Involvement Timeline



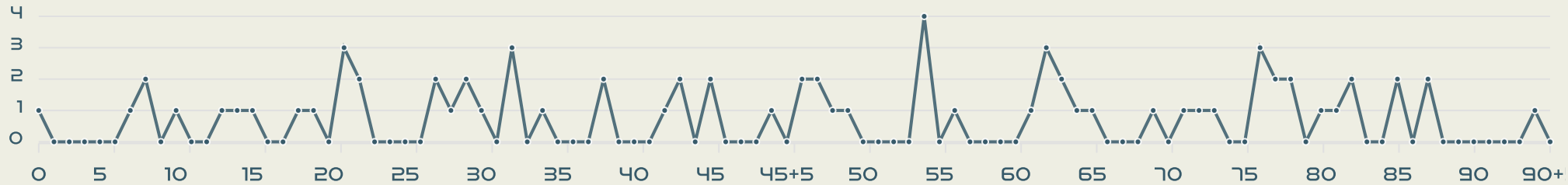
34

Total Involvements



Italy

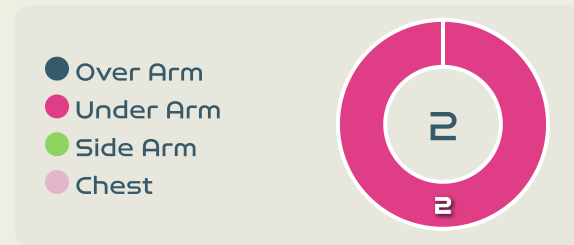
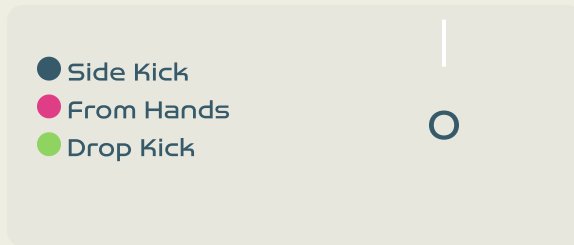
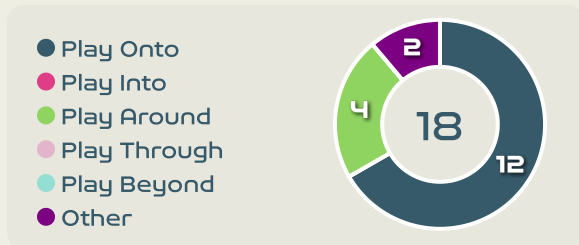
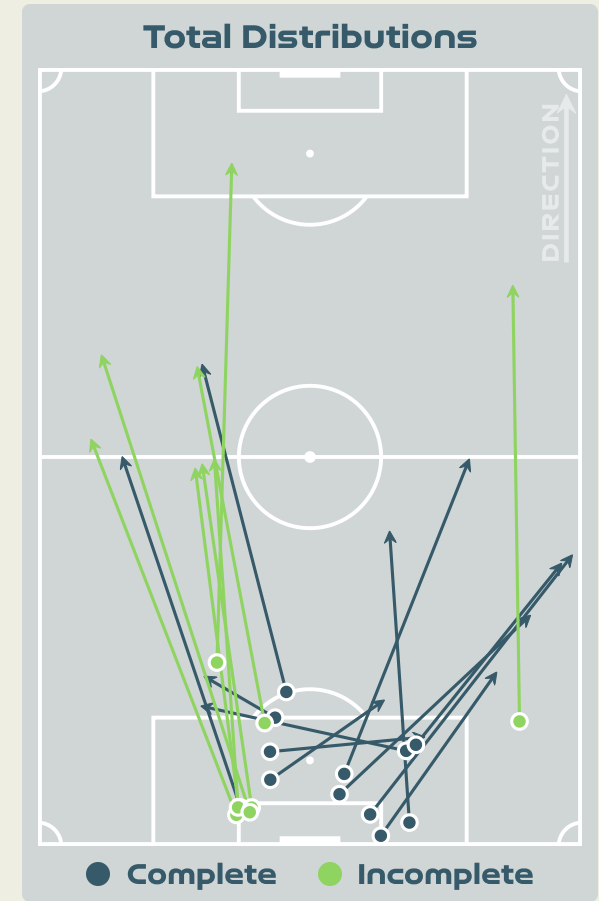
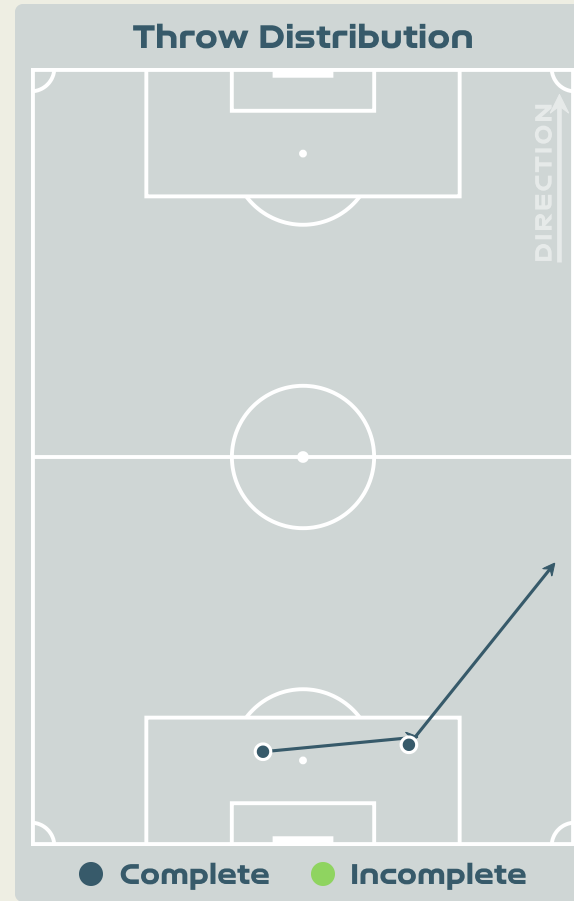
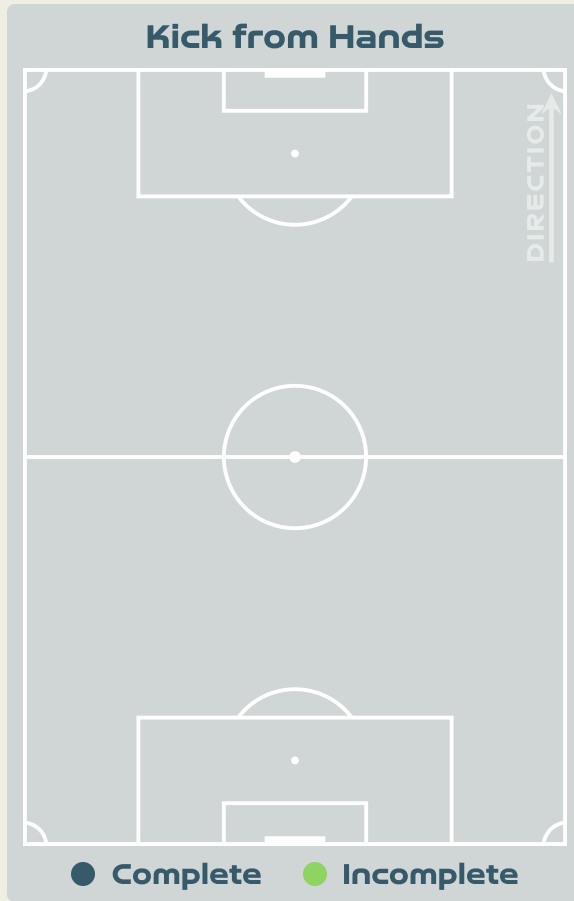
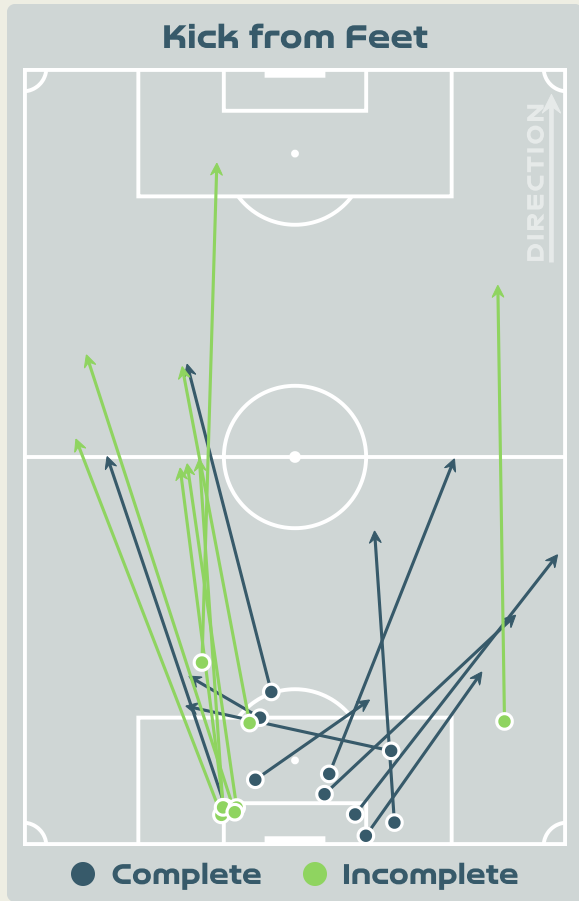
Italy GK Involvement Timeline



74

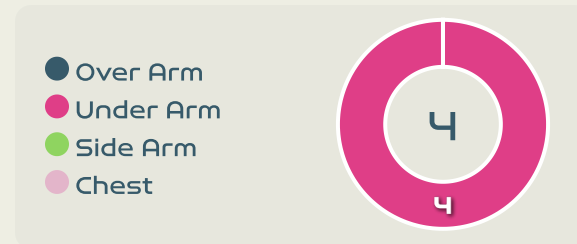
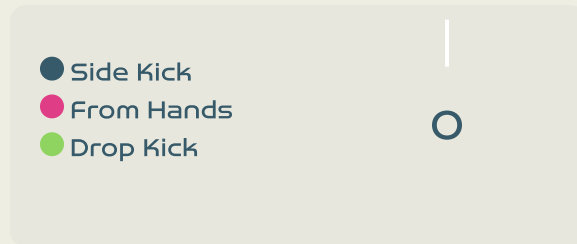
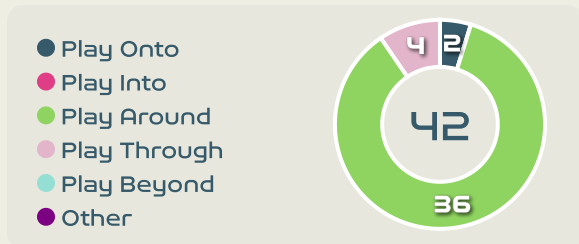
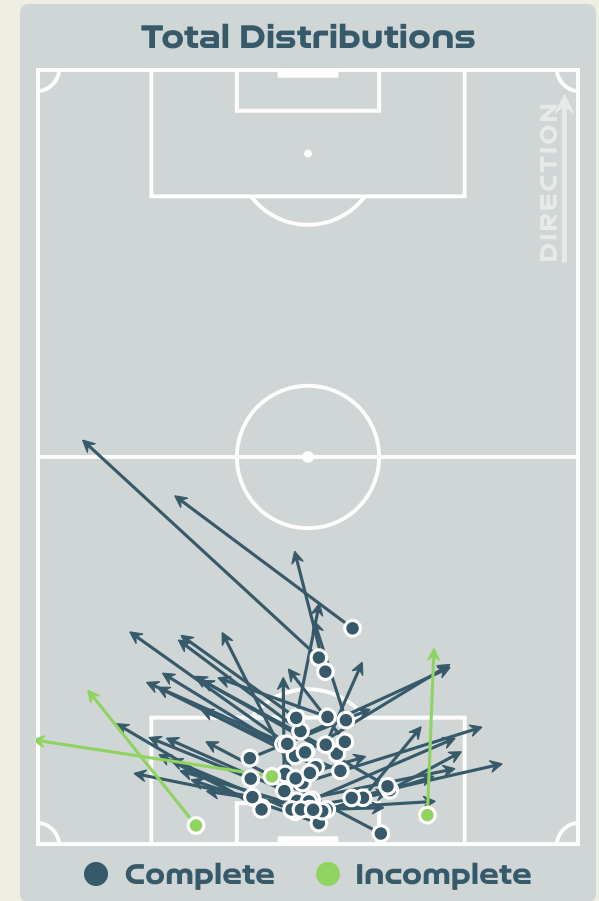
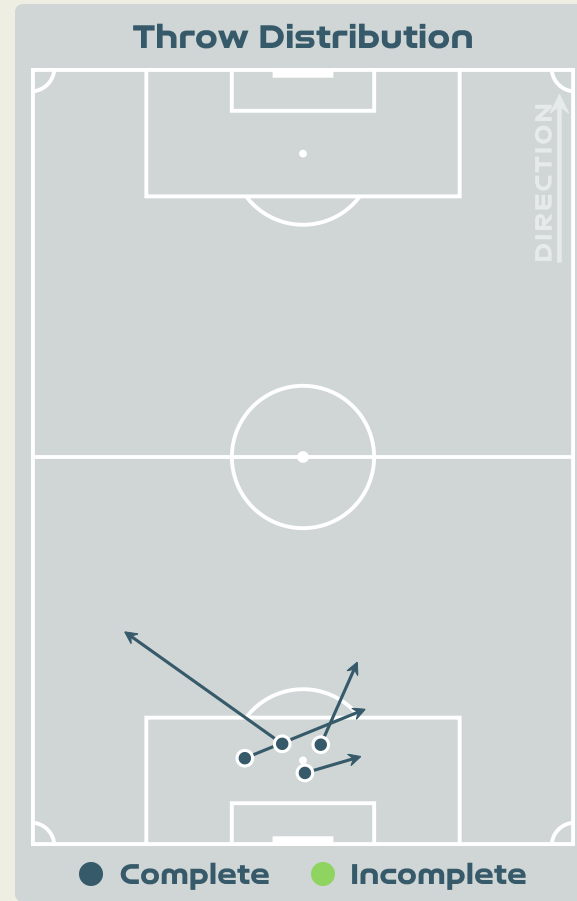
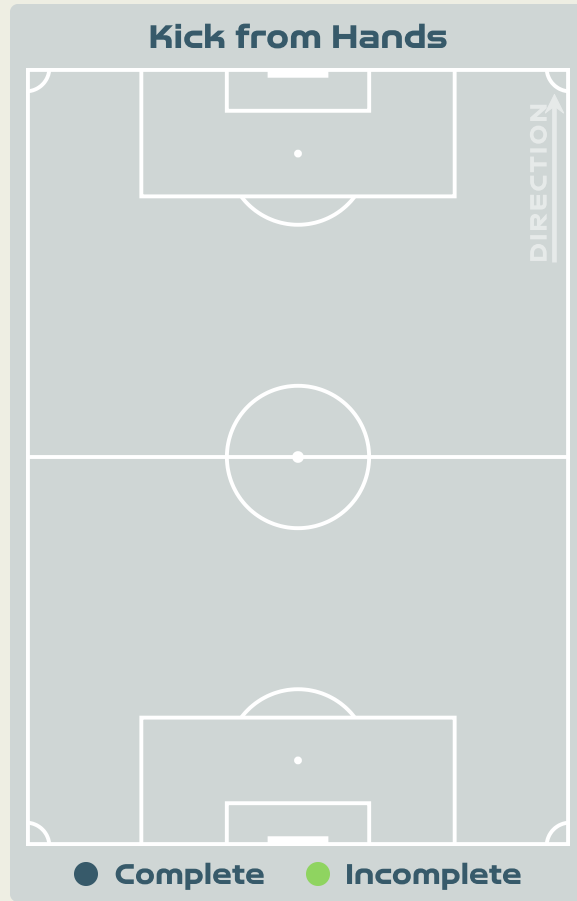
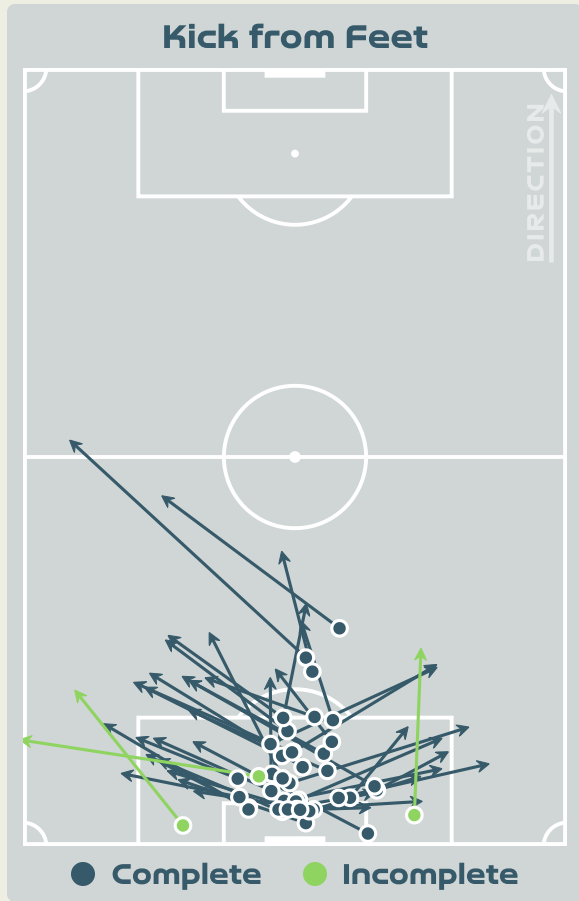
Total Involvements

Goalkeeping Distribution

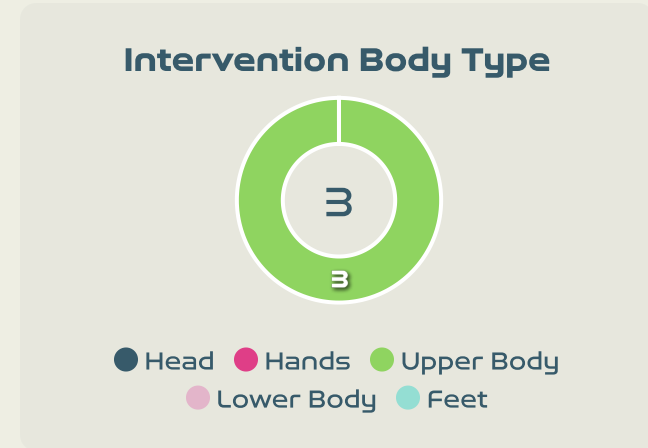
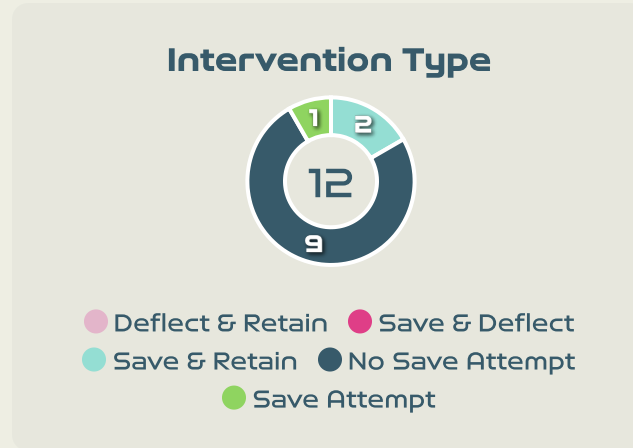
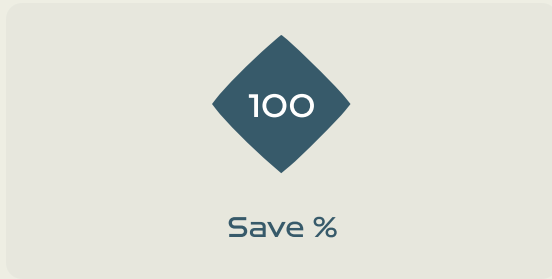
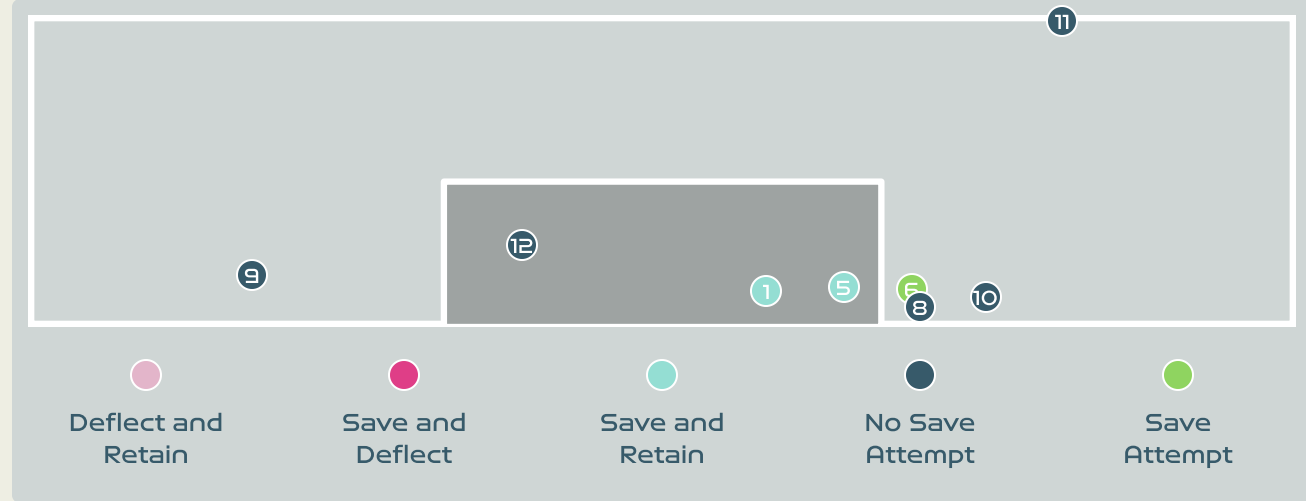
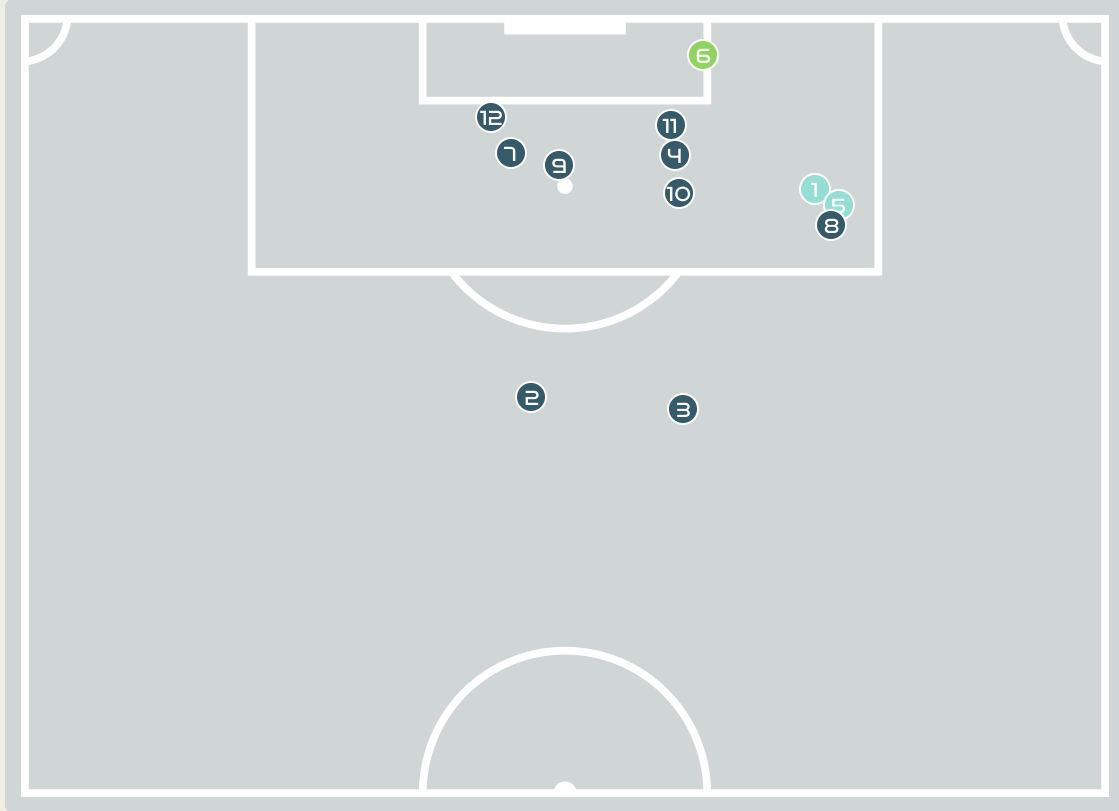




Goalkeeping Distribution



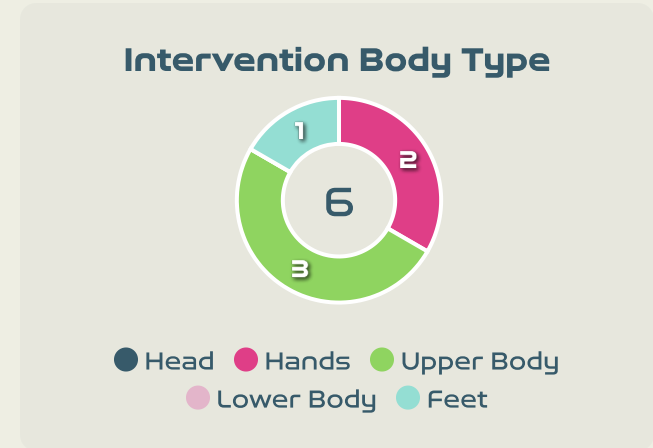
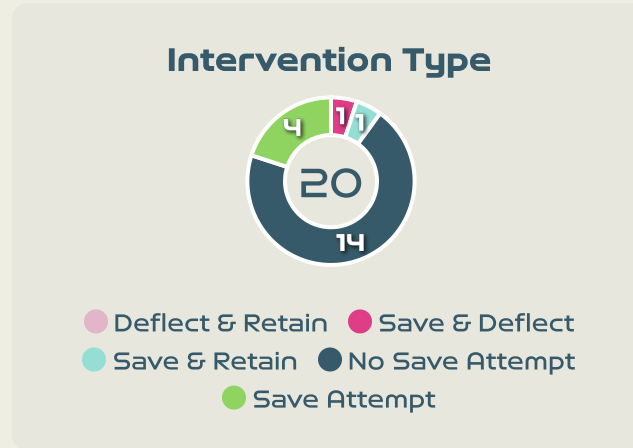
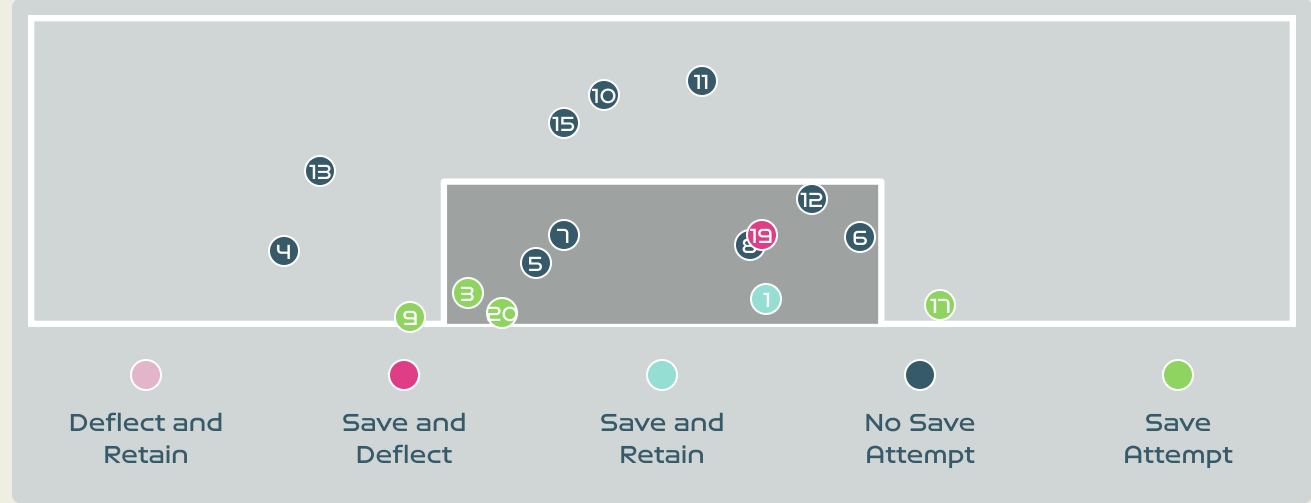
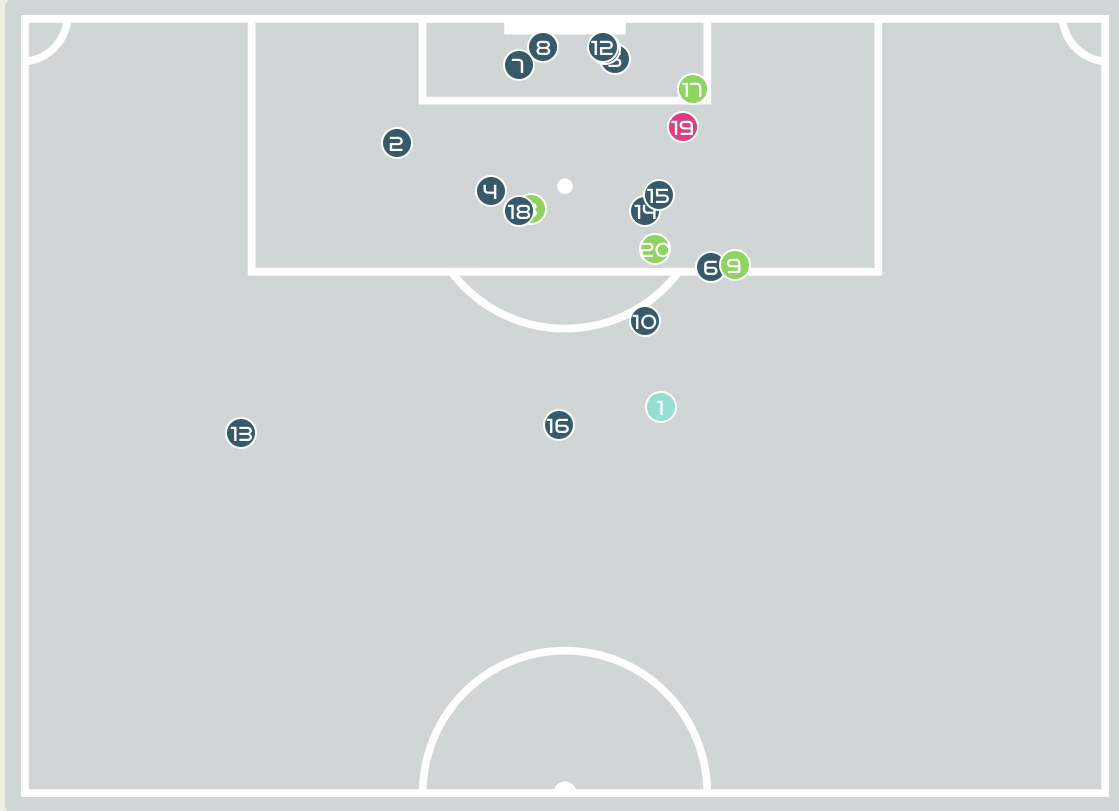
Goal Prevention



Total Attempts on Goal Faced	Total Goal Interventions	Save & Retain	Deflect & Retain	Save & Deflect	Save Attempt	No Save Attempt
12	2	2	0	0	1	9



Goal Prevention

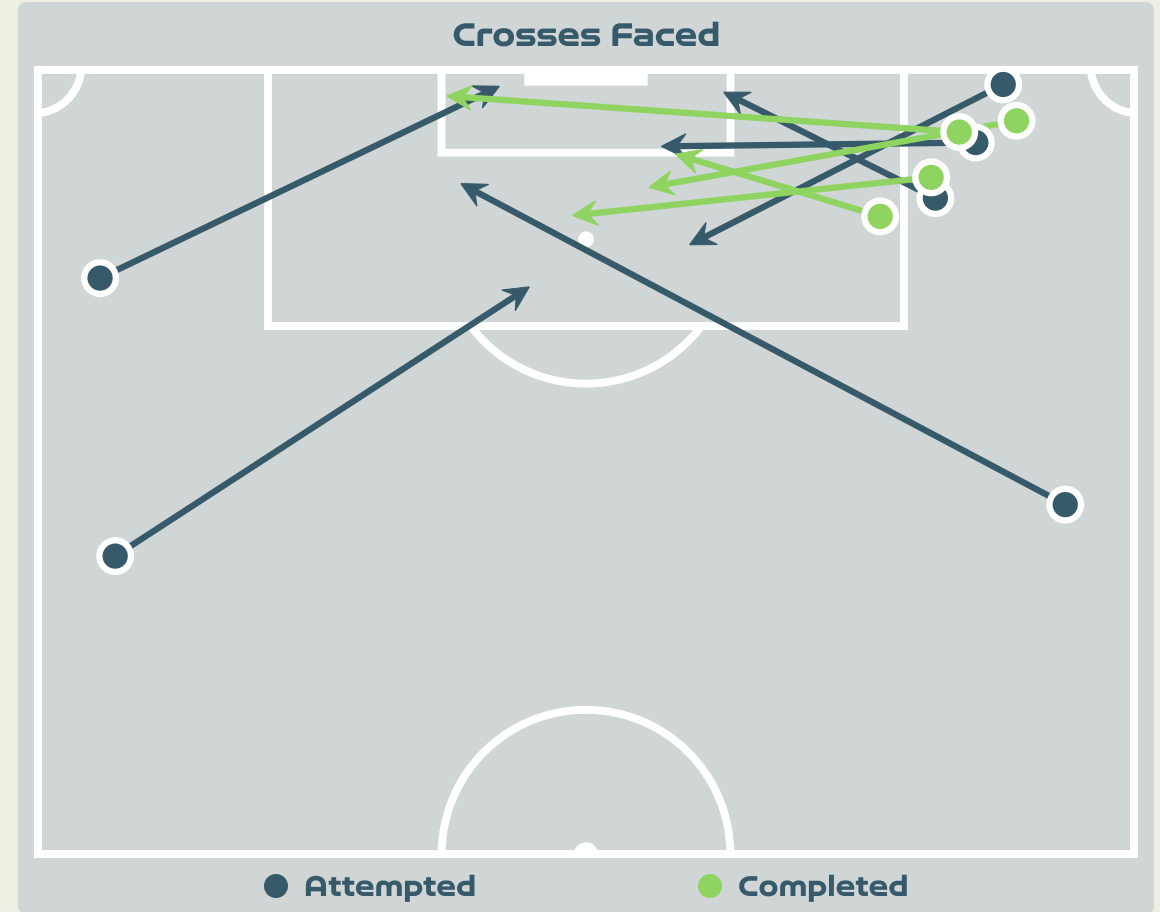
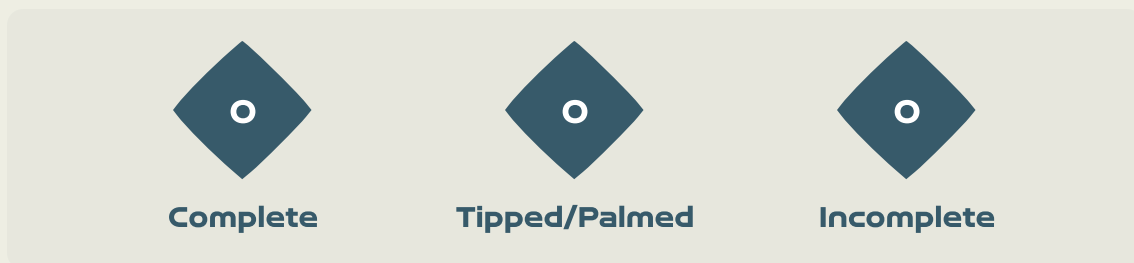
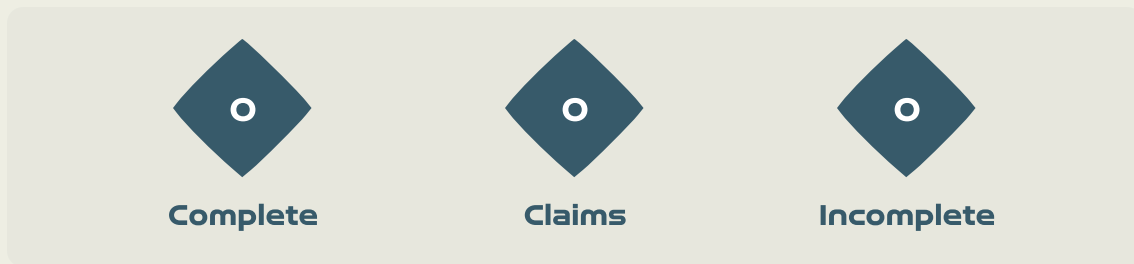
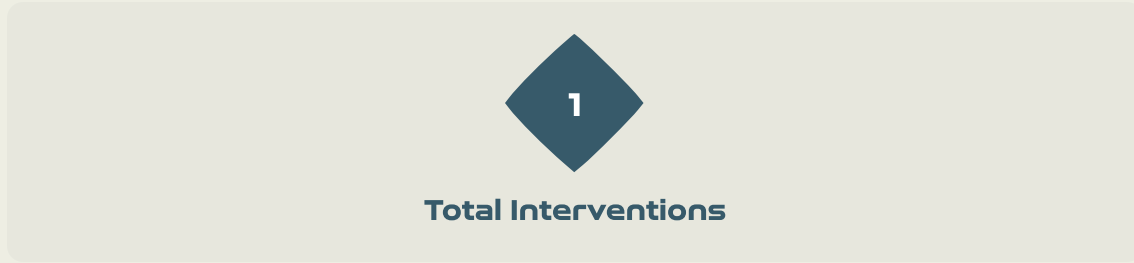


20
Total Attempts on Goal Faced

29
Save %

Total Attempts on Goal Faced	Total Goal Interventions	Save & Retain	Deflect & Retain	Save & Deflect	Save Attempt	No Save Attempt
20	2	1	0	1	4	14

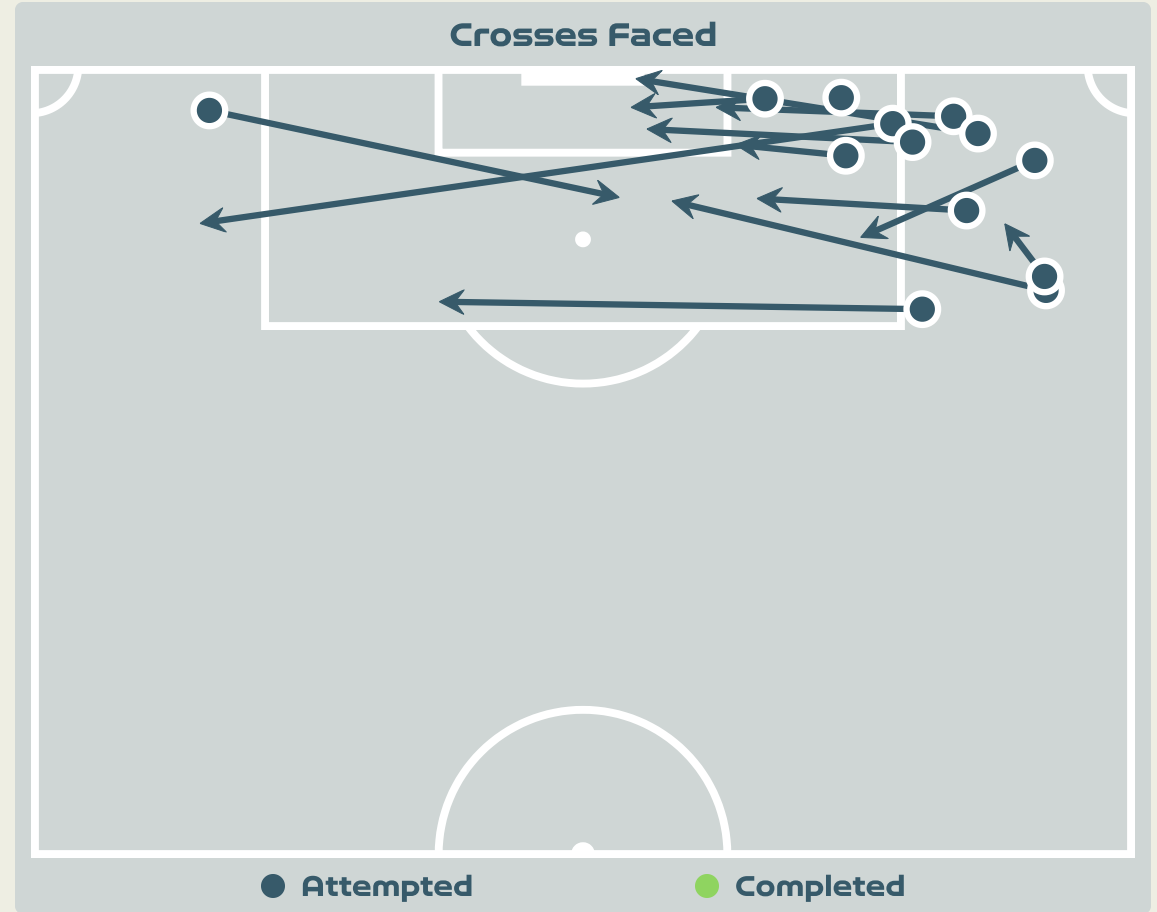
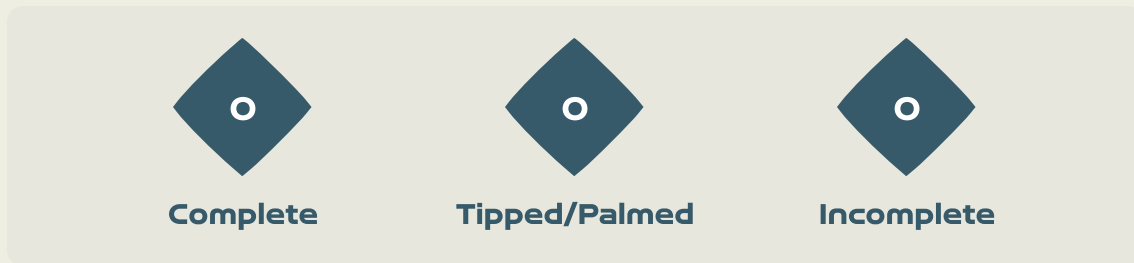
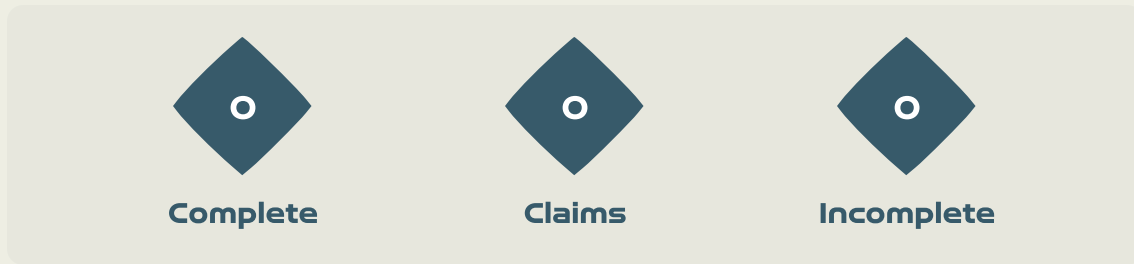
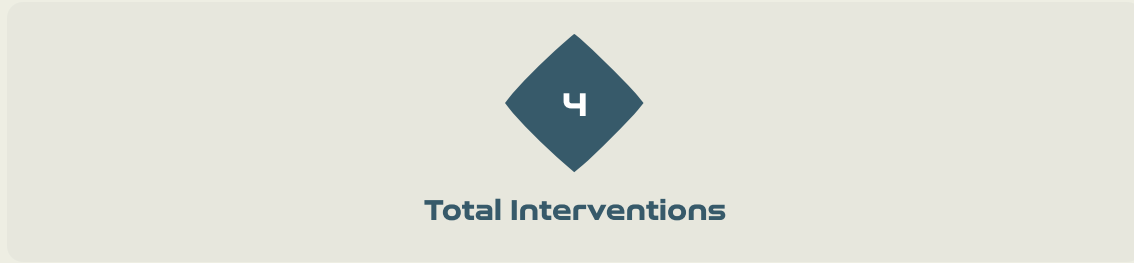
Aerial Control



Delivery Types Faced

Total	In Swing	Out Swing	Driven	Lofted	Cutback	Push
13	1	3	0	8	0	1

Aerial Control



Delivery Types Faced

Total	In Swing	Out Swing	Driven	Lofted	Cutback	Push
20	7	4	1	4	0	4



SET PLAYS



Sweden v Italy





Set Plays - Corners

36

Total Set Plays

2

Total Free Kicks

0

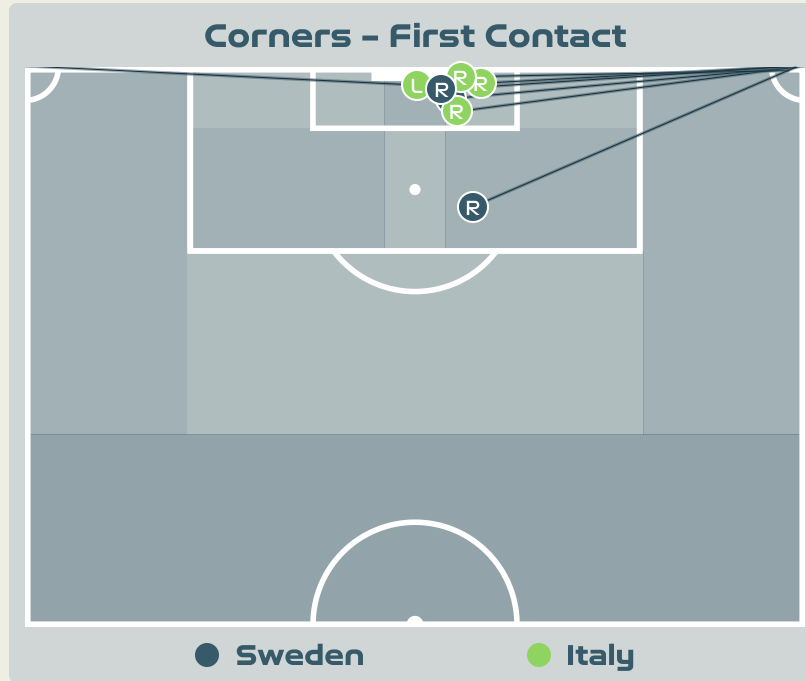
Total Penalties

7

Total Corners

27

Total Throw Ins



Delivery Type	From Left Side	From Right Side	Total
Direct to Area	1	6	7
Short	0	0	0
Edge of Penalty Area	0	0	0

Delivery Style	Total
Inswing	7
Outswing	0
Driven	0

Free Kicks	
Type	Total
Direct	1
Direct (on target)	0
Direct (off target)	0
Indirect	1

First Contacts on Sweden Crosses

3

By Sweden

4

By Italy

Top 5 Player First Contacts		
Player	Team	Total
BONANSEA Barbara	Italy	3
ILESTEDT Amanda	Sweden	2
RUBENSSON Elin	Sweden	1
DURANTE Francesca	Italy	1



Set Plays - Corners

43

Total Set Plays

15

Total Free Kicks

0

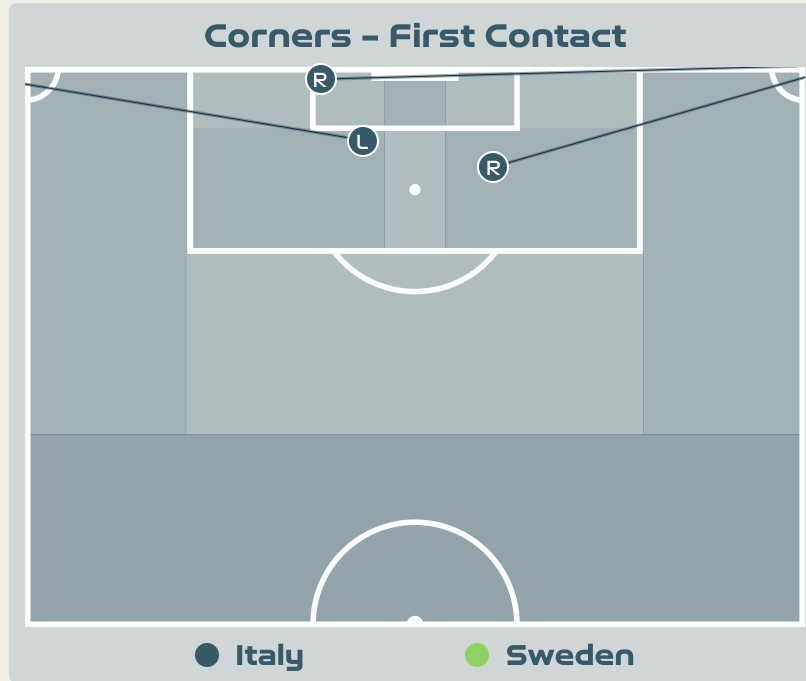
Total Penalties

3

Total Corners

25

Total Throw Ins



Delivery Type	From Left Side	From Right Side	Total
Direct to Area	1	1	2
Short	0	1	1
Edge of Penalty Area	0	0	0

Delivery Style	Total
Inswing	0
Outswing	2
Driven	0

Free Kicks	
Type	Total
Direct	13
Direct (on target)	0
Direct (off target)	0
Indirect	2

First Contacts on Italy Crosses

3

By Italy

0

By Sweden

Top 5 Player First Contacts		
Player	Team	Total
BECCARI Chiara	Italy	1
BOATTIN Lisa	Italy	1
CARUSO Arianna	Italy	1



INDIVIDUAL DATA IN POSSESSION



Sweden v Italy



In Possession - Distributions



#	Player	Passes Attempted	Passes Completed	Pass Completion %	Switches of Play	Crosses Attempted	Crosses Completed	Line Breaks Attempted	Line Breaks Completed	Line Break Completion %	Ball Progressions	Take Ons	Step Ins	Attempts at Goal	Goals
1	MUSOVIC Zecira	20	12	60%	0	0	0	13	7	53%	0	0	0	0	0
2	ANDERSSON Jonna	37	27	73%	1	7	3	11	4	36%	2	0	2	1	0
6	ERIKSSON Magdalena	30	26	87%	1	0	0	13	10	76%	0	0	0	0	0
9	ASLLANI Kosovare	23	16	70%	0	2	0	6	5	83%	1	1	0	0	0
11	BLACKSTENIUS Stina	11	10	91%	1	1	0	2	2	100%	3	2	1	2	1
13	ILESTEDT Amanda	35	30	86%	0	0	0	11	9	81%	0	0	0	3	2
14	BJORN Nathalie	90	68	76%	1	1	0	33	20	60%	2	1	1	1	0
16	ANGELDAL Filippa	57	47	82%	1	1	0	11	7	63%	1	1	0	2	0
18	ROLFO Fridolina	33	29	88%	0	0	0	9	7	77%	0	0	0	5	1
19	KANERYD Johanna	20	16	80%	0	4	0	0	0	0%	2	2	0	0	0
23	RUBENSSON Elin	31	27	87%	0	0	0	8	6	75%	0	0	0	3	0
7	JANOgy Madelen	9	6	67%	0	1	0	2	1	50%	1	1	0	0	0
10	JAKOBSSON Sofia	4	4	100%	0	3	0	3	3	100%	3	2	1	1	0
15	BLOMQVIST Rebecka	3	3	100%	0	0	0	1	1	100%	1	1	0	1	1
17	SEGER Caroline	13	11	85%	0	0	0	4	4	100%	0	0	0	0	0
22	SCHOUGH Olivia	9	5	56%	0	0	0	1	1	100%	0	0	0	1	0

In Possession - Offers & Receptions



			Offer movement types						
#	Player	Total Offers	In Front	In Between	Out to In	In to Out	In Behind	No Movement	Offers Received
1	MUSOVIC Zecira	5	0	0	0	0	1	4	2
2	ANDERSSON Jonna	26	5	0	0	0	5	16	8
6	ERIKSSON Magdalena	19	1	0	0	0	0	18	7
9	ASLLANI Kosovare	42	3	23	1	6	6	3	11
11	BLACKSTENIUS Stina	33	0	6	1	2	24	0	4
13	ILESTEDT Amanda	11	1	0	0	0	0	10	7
14	BJORN Nathalie	16	5	0	0	0	0	11	13
16	ANGELDAL Filippa	24	6	11	1	2	1	3	13
18	ROLFO Fridolina	21	3	7	0	2	7	2	12
19	KANERYD Johanna	50	0	11	1	2	17	19	12
23	RUBENSSON Elin	39	19	17	1	0	1	1	10
7	JANOBY Madelen	6	0	4	1	1	0	0	5
10	JAKOBSSON Sofia	20	0	0	0	2	14	4	8
15	BLOMQVIST Rebecka	9	0	2	1	0	6	0	3
17	SEGER Caroline	9	5	4	0	0	0	0	3
22	SCHOUGH Olivia	15	1	4	1	2	7	0	1



In Possession - Distributions

#	Player	Passes Attempted	Passes Completed	Pass Completion %	Switches of Play	Crosses Attempted	Crosses Completed	Line Breaks Attempted	Line Breaks Completed	Line Break Completion %	Ball Progressions	Take Ons	Step Ins	Attempts at Goal	Goals
22	DURANTE Francesca	46	43	93%	0	0	0	3	1	33%	0	0	0	0	0
4	DI GUGLIELMO Lucia	40	34	85%	0	0	0	12	11	91%	3	1	2	1	0
5	LINARI Elena	41	39	95%	1	0	0	5	5	100%	0	0	0	0	0
6	GIUGLIANO Manuela	53	37	70%	3	1	1	13	5	38%	0	0	0	1	0
7	CANTORE Sofia	27	23	85%	0	2	1	7	5	71%	3	2	1	4	0
8	BONANSEA Barbara	10	4	40%	0	0	0	3	1	33%	0	0	0	0	0
14	BECCARI Chiara	20	16	80%	0	0	0	1	1	100%	0	0	0	1	0
16	DRAGONI Giulia	29	24	83%	0	0	0	5	4	80%	1	1	0	0	0
17	BOATTIN Lisa	45	33	73%	1	3	0	22	10	45%	6	5	1	1	0
18	CARUSO Arianna	26	18	69%	2	0	0	11	7	63%	2	1	1	2	0
23	SALVAI Cecilia	80	59	74%	0	0	0	44	26	59%	5	1	4	0	0
9	GIACINTI Valentina	3	2	67%	0	1	0	1	0	0%	0	0	0	1	0
15	SERTURINI Annamaria	11	6	55%	0	3	2	3	2	66%	1	1	0	0	0
19	LENZINI Martina	25	21	84%	0	1	0	13	9	69%	1	1	0	0	0
20	GREGGI Giada	15	13	87%	0	1	1	4	4	100%	0	0	0	1	0
21	CERNOIA Valentina	14	14	100%	0	1	1	4	4	100%	0	0	0	0	0



In Possession - Offers & Receptions

			Offer movement types						
#	Player	Total Offers	In Front	In Between	Out to In	In to Out	In Behind	No Movement	Offers Received
22	DURANTE Francesca	14	1	0	0	0	0	13	10
4	DI GUGLIELMO Lucia	31	13	0	1	0	1	16	12
5	LINARI Elena	51	9	1	0	0	0	41	18
6	GIUGLIANO Manuela	79	35	36	2	0	0	6	24
7	CANTORE Sofia	39	0	3	1	1	26	8	5
8	BONANSEA Barbara	42	2	21	1	3	11	4	11
14	BECCARI Chiara	42	3	27	3	5	4	0	15
16	DRAGONI Giulia	29	9	13	1	4	1	1	10
17	BOATTIN Lisa	53	14	1	1	0	9	28	16
18	CARUSO Arianna	58	23	27	0	0	7	1	7
23	SALVAI Cecilia	15	4	1	0	0	0	10	9
9	GIACINTI Valentina	10	0	4	0	0	6	0	1
15	SERTURINI Annamaria	21	1	2	0	0	7	11	7
19	LENZINI Martina	9	6	1	0	0	0	2	5
20	GREGGI Giada	13	5	5	1	0	2	0	6
21	CERNOIA Valentina	11	6	3	0	1	1	0	2



INDIVIDUAL DATA OUT OF POSSESSION



Sweden v Italy



Out of Possession



#	Player	Tackles Made / Won	Blocks	Interceptions	Pressing Direct	Pressing Indirect	Duels Won - Aerial	Duels Won - Physical	Possession Contests won	Clearances	Loose Ball Receptions	Pushing On	Pushing On into Pressing	Possession Regains	Possession Interrupted
1	MUSOVIC Zecira	0 / 0	0	0	0	0	0	0	0	1	2	0	0	4	0
2	ANDERSSON Jonna	4 / 0	4	2	7	12	0	0	2	1	6	28	15	3	5
6	ERIKSSON Magdalena	0 / 0	1	1	5	3	1	0	1	5	6	8	2	1	4
9	ASLLANI Kosovare	1 / 0	2	0	6	36	0	0	2	0	5	20	14	3	1
11	BLACKSTENIUS Stina	1 / 0	0	1	0	26	2	0	2	0	7	25	17	1	0
13	ILESTEDT Amanda	1 / 1	2	1	1	3	6	0	6	6	4	3	0	4	5
14	BJORN Nathalie	1 / 0	6	3	7	5	0	1	1	6	11	12	5	11	4
16	ANGELDAL Filippa	4 / 2	4	1	4	11	1	0	3	3	8	30	10	9	4
18	ROLFO Fridolina	1 / 1	5	0	4	30	0	0	0	1	9	21	15	1	3
19	KANERYD Johanna	6 / 1	2	2	5	17	1	0	1	0	10	23	9	6	6
23	RUBENSSON Elin	7 / 1	3	4	13	14	1	0	1	2	12	15	10	8	2
7	JANOBY Madelen	2 / 1	0	0	4	26	0	0	0	1	2	22	15	1	1
10	JAKOBSSON Sofia	2 / 0	1	0	1	5	0	0	0	0	1	7	1	0	0
15	BLOMQVIST Rebecka	0 / 0	0	0	0	3	0	0	0	0	0	4	3	0	0
17	SEGER Caroline	2 / 0	1	0	2	1	0	0	0	0	2	4	2	0	1
22	SCHOUGH Olivia	2 / 1	1	2	1	14	0	0	0	1	2	10	6	3	3

Out of Possession



#	Player	Tackles Made / Won	Blocks	Interceptions	Pressing Direct	Pressing Indirect	Duels Won - Aerial	Duels Won - Physical	Possession Contests won	Clearances	Loose Ball Receptions	Pushing On	Pushing On into Pressing	Possession Regains	Possession Interrupted
22	DURANTE Francesca	1 / 0	0	0	0	0	0	0	0	0	5	0	0	7	1
4	DI GUGLIELMO Lucia	2 / 1	4	0	2	8	1	0	1	2	10	10	3	4	3
5	LINARI Elena	4 / 2	2	0	3	14	1	0	1	7	6	11	6	7	5
6	GIUGLIANO Manuela	11 / 4	1	1	9	27	0	0	3	1	8	30	13	8	1
7	CANTORE Sofia	4 / 0	4	0	6	21	1	1	2	0	3	11	6	1	6
8	BONANSEA Barbara	3 / 0	2	0	4	16	4	0	4	1	4	18	7	2	2
14	BECCARI Chiara	0 / 0	1	0	1	6	3	0	4	0	3	7	3	1	0
16	DRAGONI Giulia	1 / 1	4	0	9	19	1	0	2	0	5	13	7	3	2
17	BOATTIN Lisa	2 / 2	5	3	5	12	3	0	3	4	9	16	6	8	4
18	CARUSO Arianna	6 / 1	5	2	11	27	1	0	1	5	9	29	16	11	4
23	SALVAI Cecilia	2 / 2	5	3	3	7	1	0	2	9	2	6	3	6	8
9	GIACINTI Valentina	0 / 0	0	0	0	2	0	0	0	0	2	3	1	0	0
15	SERTURINI Annamaria	2 / 1	2	1	3	8	1	0	1	1	2	10	7	3	1
19	LENZINI Martina	1 / 0	0	1	1	1	0	0	0	0	2	2	0	1	1
20	GREGGI Giada	2 / 1	3	0	8	13	0	0	0	0	3	10	4	2	1
21	CERNOIA Valentina	4 / 2	0	0	4	3	0	0	0	2	3	3	3	4	1



INDIVIDUAL DATA PHYSICAL



Sweden v Italy



Physical Data



#	Player	Total Distance (m)	Zone 1: 0-7 km/h (m)	Zone 2: 7-13km/h (m)	Zone 3: 13-19km/h (m)	Zone 4: 19-23km/h (m)	Zone 5: 23+ km/h (m)	High Speed Runs (Zone 4)	Sprints (Zone 5)	Top Speed (km/h)
1	MUSOVIC Zecira	4935.4	3797.8	882.9	235.9	11.8	6.9	28.0	1.0	25.5
2	ANDERSSON Jonna	10903.2	3106.3	4408.2	2762.9	450.3	175.5	214.0	38.0	29.6
6	ERIKSSON Magdalena	9540.2	3328.6	3678.7	2169.4	310.1	54.4	170.0	28.0	27.1
9	ASLLANI Kosovare	7521.1	2560.9	2793.4	1687.7	373.0	106.0	137.0	34.0	27.1
11	BLACKSTENIUS Stina	9288.4	3512.0	3081.9	1842.8	362.2	488.6	154.0	45.0	30.5
13	ILESTEDT Amanda	10343.4	3514.7	4116.7	2340.7	341.3	30.0	188.0	26.0	27.0
14	BJORN Nathalie	9789.6	3715.2	3399.9	2194.8	435.6	44.1	177.0	33.0	25.9
16	ANGELDAL Filippa	11830.2	2952.8	4853.9	3474.5	456.6	91.1	224.0	34.0	25.8
18	ROLFO Fridolina	7439.6	2338.3	2722.9	1822.0	430.0	126.5	145.0	36.0	26.3
19	KANERYD Johanna	8258.7	2988.0	2599.8	1760.8	583.1	327.9	153.0	51.0	29.6
23	RUBENSSON Elin	8492.4	2754.9	3147.3	2156.2	351.6	82.4	170.0	26.0	26.0
7	JANOBY Madelen	4113.8	1228.0	1394.2	1194.6	144.8	151.8	87.0	18.0	27.4
10	JAKOBSSON Sofia	2745.4	854.9	939.8	634.5	254.5	62.0	55.0	20.0	26.1
15	BLOMQVIST Rebecka	926.7	267.6	231.8	245.8	66.8	114.8	25.0	7.0	28.5
17	SEGER Caroline	2387.5	745.6	946.4	609.0	60.9	25.8	50.0	6.0	27.0
22	SCHOUGH Olivia	4316.5	1216.8	1457.2	1156.4	364.3	121.3	93.0	25.0	26.7

Physical Data



#	Player	Total Distance (m)	Zone 1: 0-7 km/h (m)	Zone 2: 7-13km/h (m)	Zone 3: 13-19km/h (m)	Zone 4: 19-23km/h (m)	Zone 5: 23+ km/h (m)	High Speed Runs (Zone 4)	Sprints (Zone 5)	Top Speed (km/h)
22	DURANTE Francesca	4916.4	3176.5	1365.3	348.6	26.1	0	39.0	3.0	20.9
4	DI GUGLIELMO Lucia	6634.9	1826.6	2584.9	1548.6	492.3	182.5	126.0	38.0	29.4
5	LINARI Elena	8988.7	3252.1	3016.6	2135.7	301.1	284.0	176.0	36.0	27.9
6	GIUGLIANO Manuela	10875.2	2974.4	4509.9	2865.6	480.7	43.5	226.0	37.0	24.7
7	CANTORE Sofia	11389.2	3555.7	4005.6	2653.7	826.9	347.4	220.0	67.0	30.2
8	BONANSEA Barbara	6208.1	2437.9	1846.9	1467.0	327.2	128.5	122.0	28.0	29.9
14	BECCARI Chiara	7712.2	2634.5	3033.2	1566.3	337.8	140.4	128.0	35.0	29.1
16	DRAGONI Giulia	6983.4	2111.8	2691.4	1736.1	430.2	14.0	144.0	36.0	26.6
17	BOATTIN Lisa	10185.4	3629.1	3530.3	2199.0	505.2	321.9	182.0	49.0	29.4
18	CARUSO Arianna	8321.8	2501.5	3105.7	2283.5	337.0	94.0	181.0	26.0	27.2
23	SALVAI Cecilia	8898.5	3479.3	3302.2	1481.6	418.2	217.1	143.0	41.0	28.0
9	GIACINTI Valentina	2306.6	727.3	930.3	404.6	183.4	61.1	36.0	14.0	28.2
15	SERTURINI Annamaria	4133.1	1431.3	1550.7	823.7	141.8	185.2	70.0	18.0	28.9
19	LENZINI Martina	4098.7	1259.9	1471.8	980.4	177.9	208.2	81.0	20.0	29.3
20	GREGGI Giada	4573.6	1143.0	1976.3	1377.1	77.3	0	83.0	8.0	25.6
21	CERNOIA Valentina	3205.7	796.6	1087.0	1136.4	169.6	16.0	75.0	9.0	24.9

