



# China PR 1 – 0 Haiti

Group D – Match 26  
28 July 2023  
20:30 Kick Off  
Hindmarsh Stadium

**POST MATCH SUMMARY REPORT**

# Match Summary - Teams

## China PR

1 — 0

## Haiti

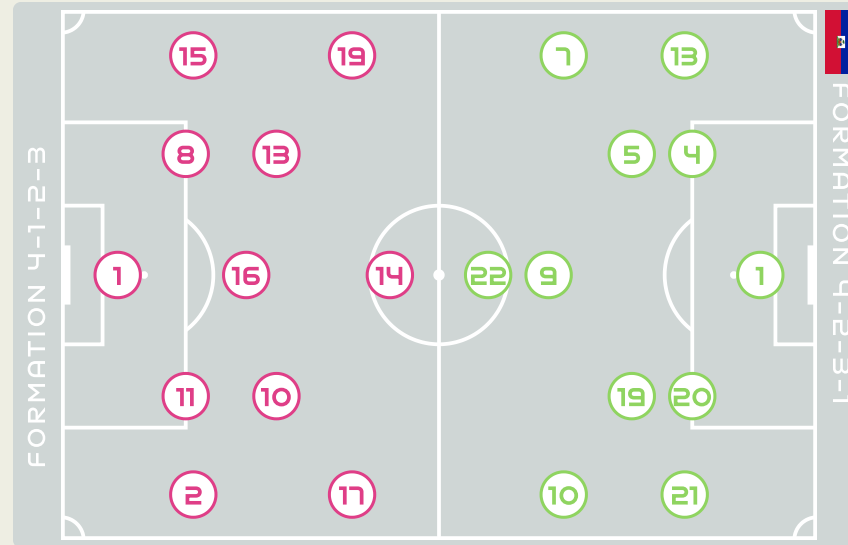


### STARTING

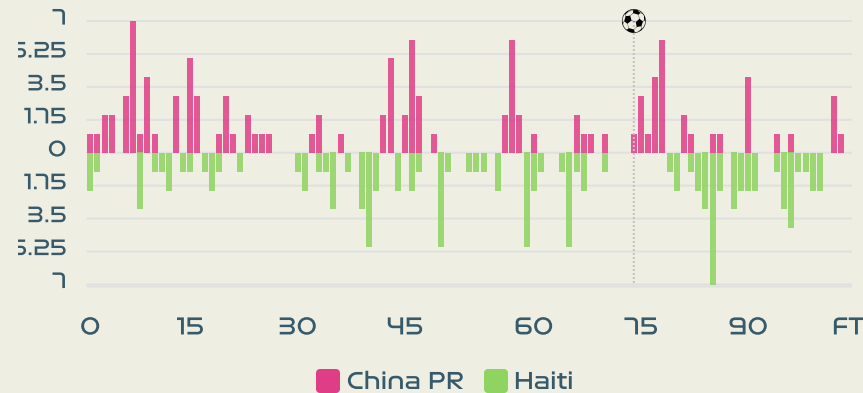
|    |    |                   |     |
|----|----|-------------------|-----|
| 1  | GK | ZHU Yu            |     |
| 2  | DF | LI Mengwen        |     |
| 8  | DF | YAO Wei           |     |
| 10 | MF | ZHANG Rui         | 28' |
| 11 | FW | WANG Shanshan (C) |     |
| 13 | MF | YANG Lina         |     |
| 14 | FW | LOU Jiahui        | 37' |
| 15 | DF | CHEN Qiaozhu      |     |
| 16 | MF | YAO Lingwei       | 82' |
| 17 | MF | WU Chengshu       | 46' |
| 19 | MF | ZHANG Linyan      | 88' |

### SUBSTITUTES

|    |    |             |         |
|----|----|-------------|---------|
| 12 | GK | XU Huan     |         |
| 22 | GK | PAN Hongyan |         |
| 3  | DF | DOU Jiaxing | 82'     |
| 4  | DF | WANG Linlin |         |
| 5  | DF | WU Haiyan   |         |
| 6  | MF | ZHANG Xin   | 37'     |
| 7  | FW | WANG Shuang | 46' 74' |
| 9  | MF | SHEN Mengyu |         |
| 18 | FW | TANG Jiali  | 88'     |
| 20 | FW | XIAO Yuyi   |         |
| 21 | MF | GU Yasha    |         |
| 23 | DF | GAO Chen    |         |



### Distribution in the Final Third



### STARTING

|                      |                     |    |    |
|----------------------|---------------------|----|----|
| THEUS Kerly          | GK                  | 1  |    |
| JOSEPH Tabita        | DF                  | 4  |    |
| 46'                  | MORYL Maudeline     | DF | 5  |
| 64'                  | LOUIS Batcheba      | FW | 7  |
| 90'                  | JEUDY Sherly        | MF | 9  |
| (C) MONDESIR Nerilia | FW                  | 10 |    |
| PETIT-FRERE Betina   | DF                  | 13 |    |
| 81'                  | PIERRE-LOUIS Dayana | MF | 19 |
| LOUIS Kethna         | DF                  | 20 |    |
| 81'                  | MATHURIN Ruthny     | DF | 21 |
| BORGELLA Roselord    | FW                  | 22 |    |

### SUBSTITUTES

|                     |                     |                  |    |   |
|---------------------|---------------------|------------------|----|---|
| AMBROISE Nahomie    | GK                  | 12               |    |   |
| LARCO Lara          | GK                  | 23               |    |   |
| 81'                 | SURPRIS Chelsea     | DF               | 2  |   |
| LIMAGE Jennyfer     | DF                  | 3                |    |   |
| 62'                 | 46'                 | DUMORNAY Melchie | MF | 6 |
| 81'                 | ETIENNE Danielle    | MF               | 8  |   |
| 64'                 | ELOISSAINT Roseline | FW               | 11 |   |
| JOSEPH Esthericove  | DF                  | 14               |    |   |
| JOSEPH Darlina      | FW                  | 15               |    |   |
| PIERRE-JEROME Milan | DF                  | 16               |    |   |
| 90'                 | JOSEPH Shwendesky   | FW               | 17 |   |
| GANTHIER Noa        | MF                  | 18               |    |   |

# Match Summary - Key Statistics

**China PR**



**Haiti**



|           |  | Possession |       |       |           |
|-----------|--|------------|-------|-------|-----------|
| Total     | 42.2%  | 14.4%      | 43.4% | Total |           |
| 1         | Goals  |            |       |       | 0         |
| 8 (3)     | Attempts at Goal (On Target)                   |            |       |       | 8 (2)     |
| 402 (333) | Total Passes (Complete)                        |            |       |       | 401 (299) |
| 83 %      | Pass Completion %                              |            |       |       | 75 %      |
| 84        | Completed Line Breaks                          |            |       |       | 61        |
| 13        | Defensive Line Breaks                          |            |       |       | 6         |
| 95        | Receptions in the Final Third                  |            |       |       | 76        |
| 16        | Crosses  |            |       |       | 15        |
| 22        | Ball Progressions                              |            |       |       | 19        |
| 191 (57)  | Defensive Pressures Applied (Direct Pressures) |            |       |       | 243 (71)  |
| 85        | Forced Turnovers                               |            |       |       | 66        |
| 77        | Second Balls                                   |            |       |       | 80        |
| 103.9 km  | Total Distance Covered                         |            |       |       | 101.7 km  |
| 4.2 km    | Zone 4 - Low Speed Sprinting: 19-23km/h        |            |       |       | 3.8 km    |

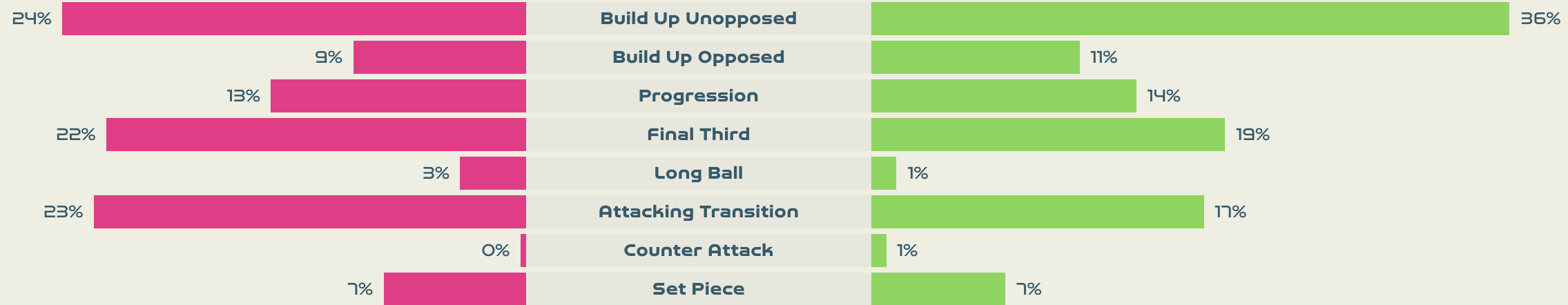
China PR

## Phases of Play

Haiti



### IN POSSESSION



### OUT OF POSSESSION





# IN POSSESSION

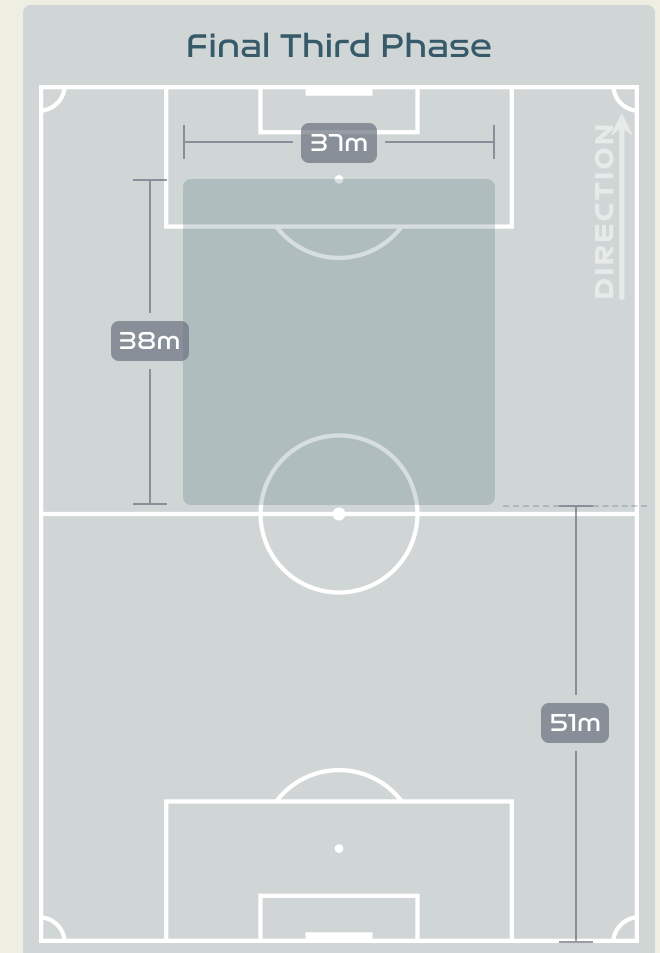
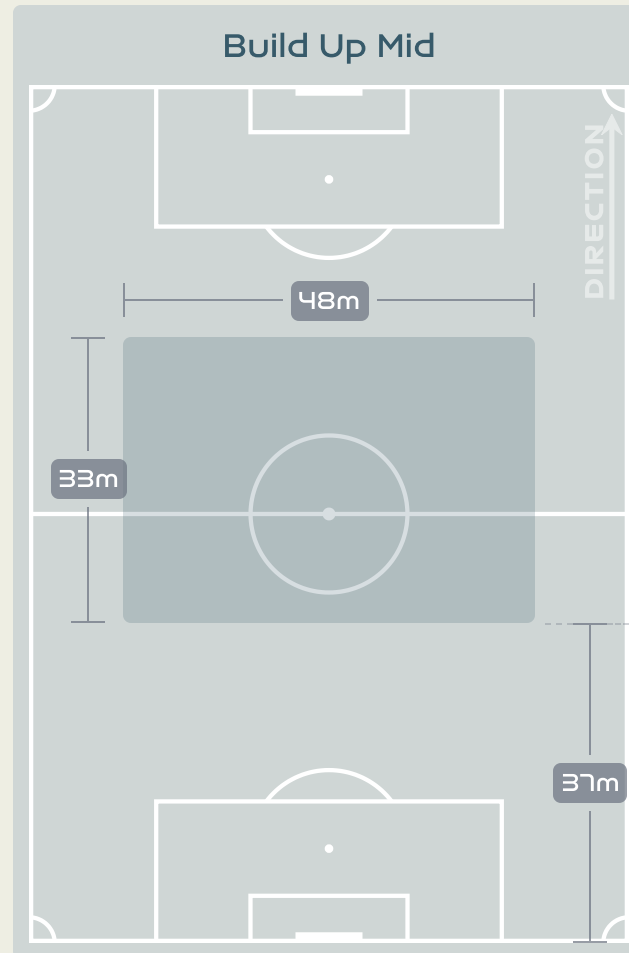
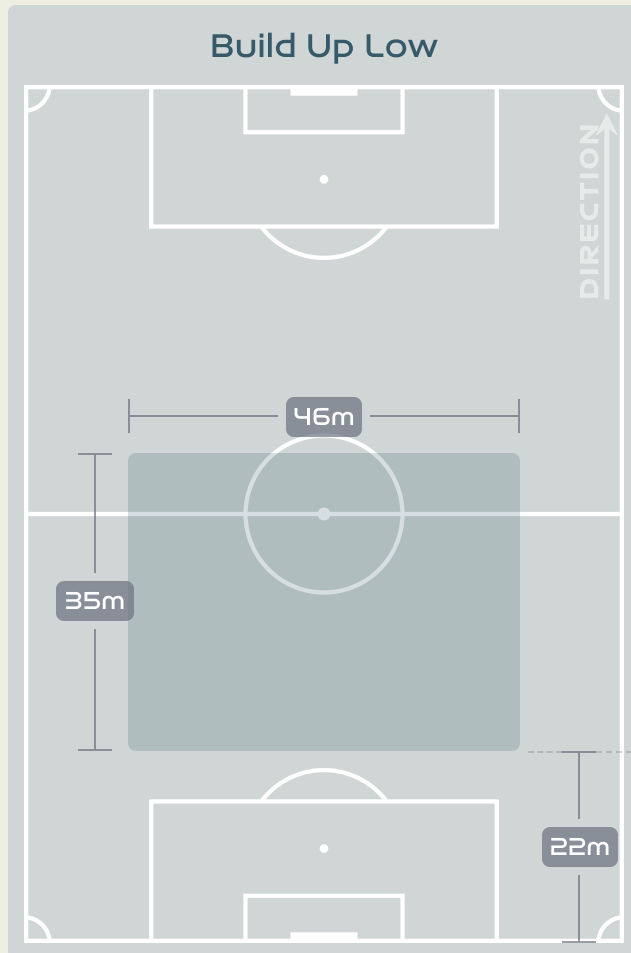


China PR v Haiti

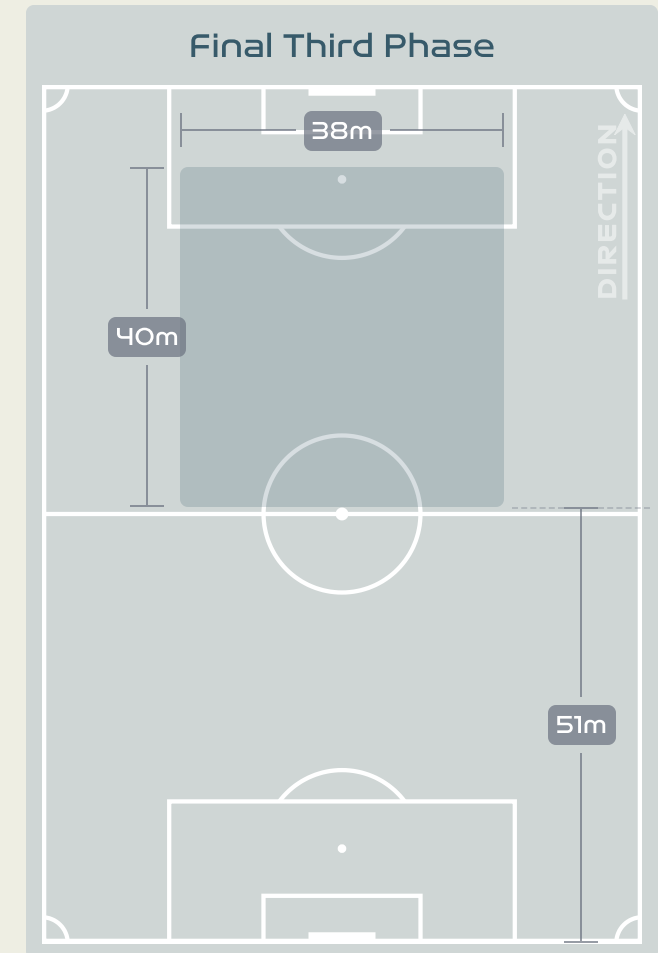
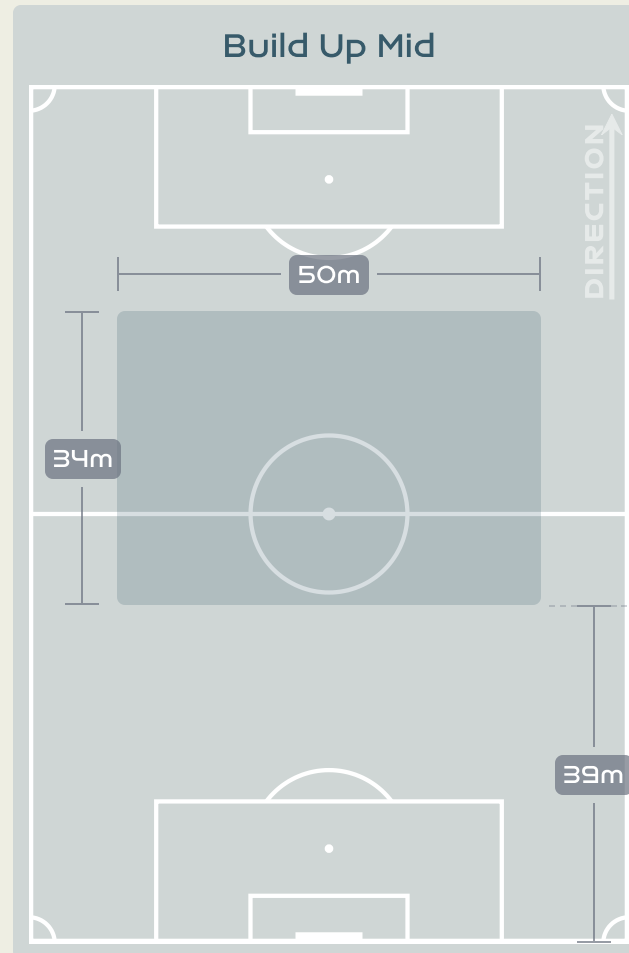
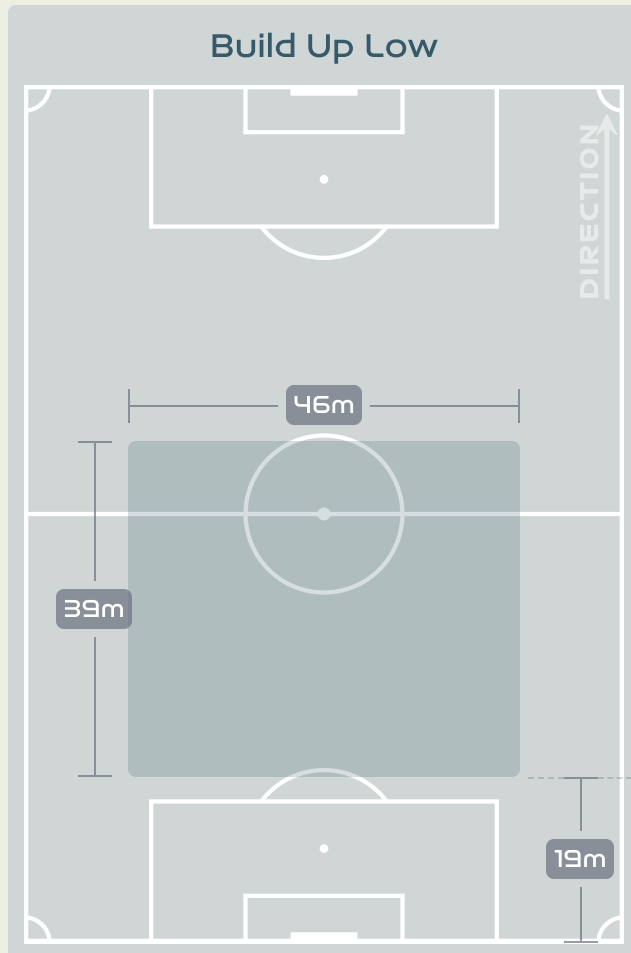


# In Possession Line Height & Team Length

China PR



# In Possession Line Height & Team Length

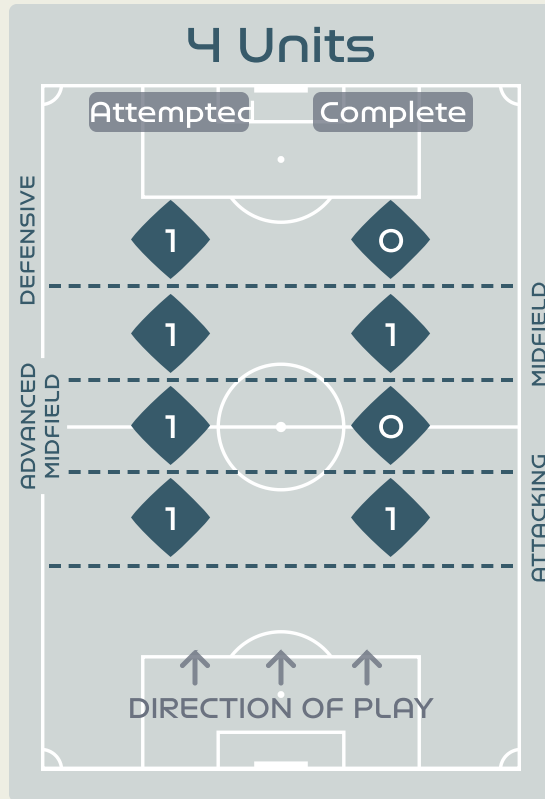
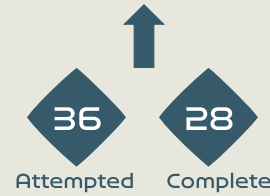


# Line Breaks

China PR

Attempted Line Breaks

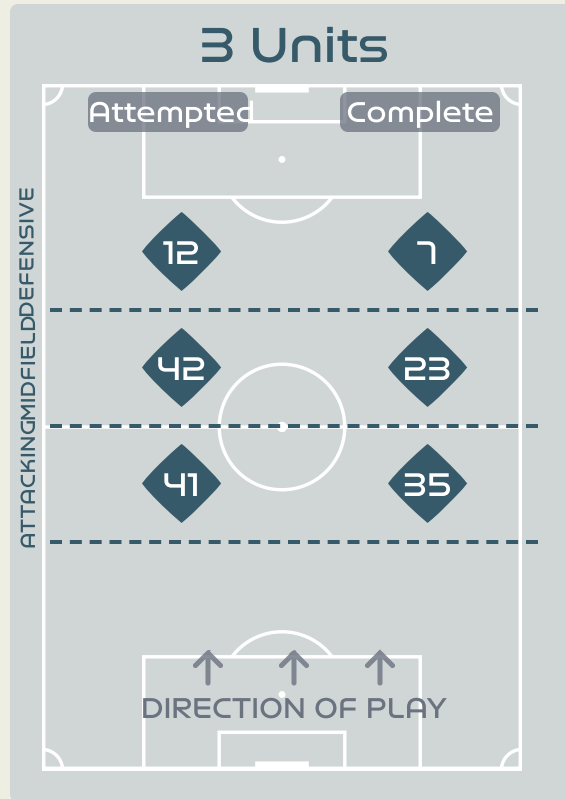
123



Attempted Line Breaks 4

Inside Shape 3

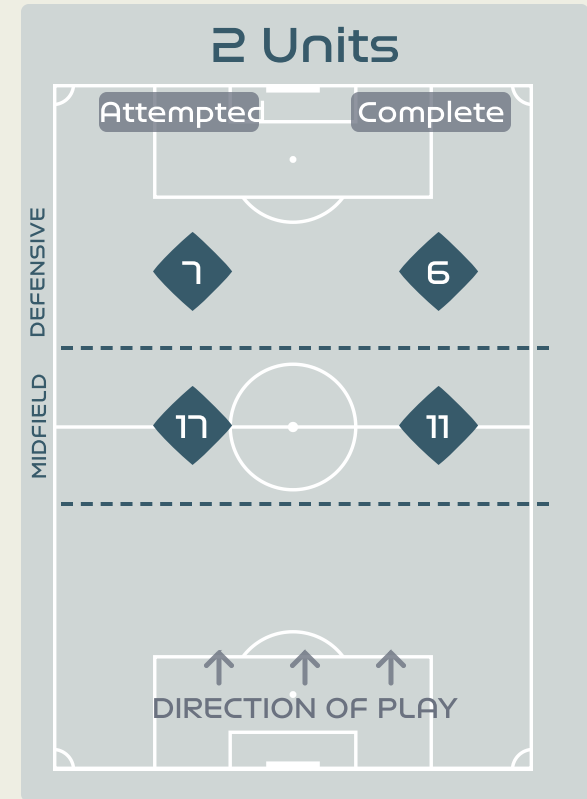
Outside Shape 1



Attempted Line Breaks 95

Inside Shape 56

Outside Shape 39



Attempted Line Breaks 24

Inside Shape 13

Outside Shape 11



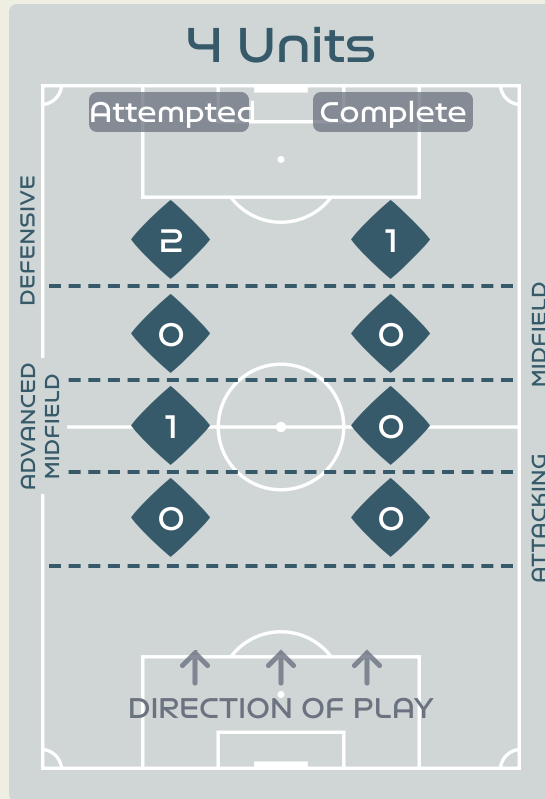
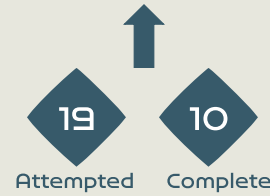
# Line Breaks



Haiti

Attempted Line Breaks

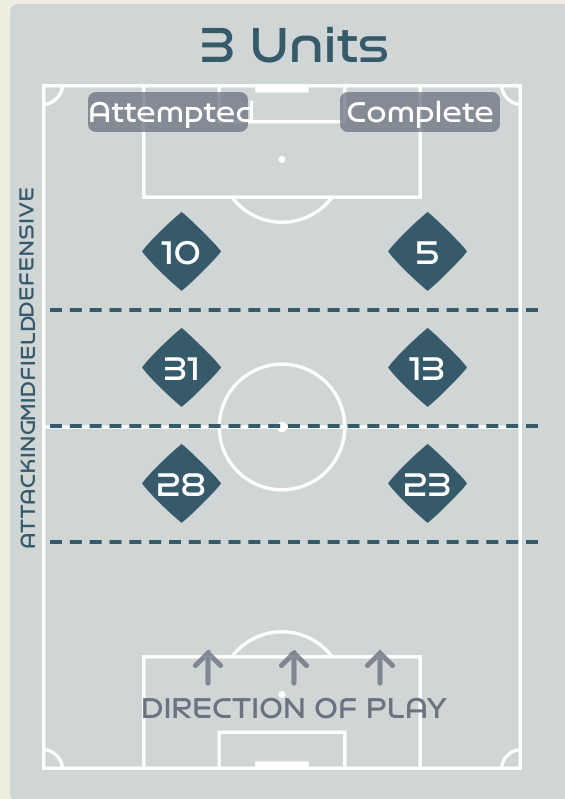
117



Attempted Line Breaks 3

Inside Shape 2

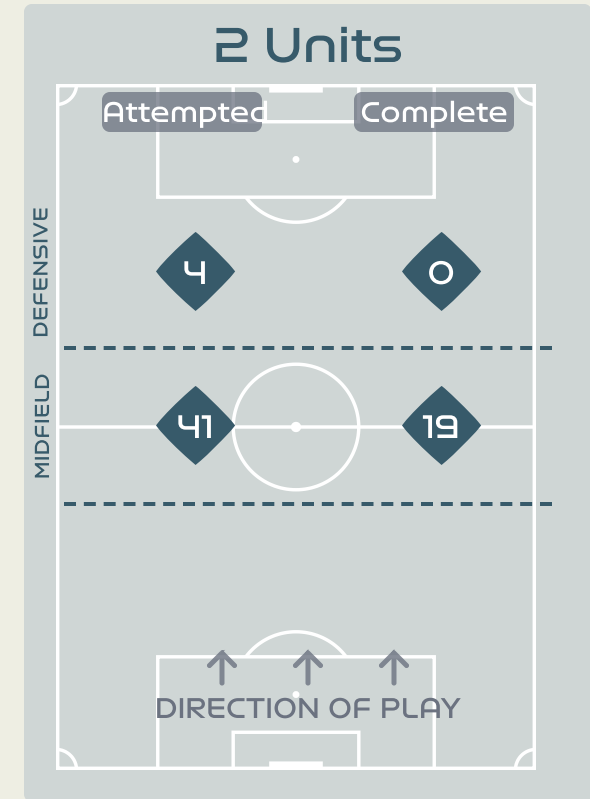
Outside Shape 1



Attempted Line Breaks 69

Inside Shape 38

Outside Shape 31



Attempted Line Breaks 45

Inside Shape 41

Outside Shape 4



# Line Breaks



|    |                     |                       |                       |                         | 4 Units        |                         |               |                | 3 Units        |               |                | 2 Units       |                | Direction |        |      | Distribution Type |       |                  |
|----|---------------------|-----------------------|-----------------------|-------------------------|----------------|-------------------------|---------------|----------------|----------------|---------------|----------------|---------------|----------------|-----------|--------|------|-------------------|-------|------------------|
| #  | Player              | Line Breaks Attempted | Line Breaks Completed | Line Break Completion % | Attacking Line | Attacking Midfield Line | Midfield Line | Defensive Line | Attacking Line | Midfield Line | Defensive Line | Midfield Line | Defensive Line | Through   | Around | Over | Pass              | Cross | Ball Progression |
| 1  | THEUS Kerly         | 0                     | 0                     | 0%                      | 0              | 0                       | 0             | 0              | 0              | 0             | 0              | 0             | 0              | 0         | 0      | 0    | 0                 | 0     | 0                |
| 4  | JOSEPH Tabita       | 10                    | 3                     | 30%                     | 0              | 0                       | 0             | 0              | 1              | 3             | 1              | 5             | 0              | 2         | 0      | 8    | 10                | 0     | 0                |
| 5  | MORYL Maudeline     | 3                     | 2                     | 66%                     | 0              | 0                       | 0             | 0              | 1              | 0             | 0              | 2             | 0              | 0         | 2      | 1    | 3                 | 0     | 0                |
| 7  | LOUIS Batcheba      | 5                     | 3                     | 60%                     | 0              | 0                       | 0             | 1              | 0              | 1             | 2              | 1             | 0              | 0         | 4      | 1    | 4                 | 0     | 1                |
| 9  | JEUDY Sherly        | 9                     | 4                     | 44%                     | 0              | 0                       | 0             | 0              | 2              | 0             | 0              | 7             | 0              | 1         | 2      | 6    | 7                 | 2     | 0                |
| 10 | MONDESIR Nerilia    | 7                     | 1                     | 14%                     | 0              | 0                       | 0             | 1              | 0              | 1             | 2              | 1             | 2              | 2         | 3      | 2    | 5                 | 2     | 0                |
| 13 | PETIT-FRERE Betina  | 16                    | 10                    | 62%                     | 0              | 1                       | 0             | 0              | 7              | 2             | 0              | 5             | 1              | 0         | 4      | 12   | 15                | 1     | 0                |
| 19 | PIERRE-LOUIS Dayana | 5                     | 4                     | 80%                     | 0              | 0                       | 0             | 0              | 2              | 1             | 0              | 2             | 0              | 1         | 1      | 3    | 5                 | 0     | 0                |
| 20 | LOUIS Kethna        | 23                    | 12                    | 52%                     | 0              | 0                       | 0             | 0              | 8              | 8             | 2              | 5             | 0              | 7         | 5      | 11   | 22                | 0     | 1                |
| 21 | MATHURIN Ruthny     | 21                    | 16                    | 76%                     | 0              | 0                       | 0             | 0              | 7              | 7             | 0              | 6             | 1              | 1         | 10     | 10   | 21                | 0     | 0                |
| 22 | BORGELLA Roselord   | 4                     | 0                     | 0%                      | 0              | 0                       | 0             | 0              | 0              | 1             | 1              | 2             | 0              | 1         | 1      | 2    | 4                 | 0     | 0                |
| 2  | SURPRIS Chelsea     | 5                     | 1                     | 20%                     | 0              | 0                       | 0             | 0              | 0              | 3             | 0              | 2             | 0              | 0         | 0      | 5    | 5                 | 0     | 0                |
| 6  | DUMORNAY Melchie    | 2                     | 1                     | 50%                     | 0              | 0                       | 0             | 0              | 0              | 0             | 0              | 2             | 0              | 2         | 0      | 0    | 2                 | 0     | 0                |
| 8  | ETIENNE Danielle    | 1                     | 0                     | 0%                      | 0              | 0                       | 0             | 0              | 0              | 0             | 0              | 1             | 0              | 0         | 0      | 1    | 1                 | 0     | 0                |
| 11 | ELOISSAINT Roseline | 5                     | 3                     | 60%                     | 0              | 0                       | 0             | 0              | 0              | 3             | 2              | 0             | 0              | 2         | 3      | 0    | 5                 | 0     | 0                |
| 17 | JOSEPH Shwendesky   | 1                     | 1                     | 100%                    | 0              | 0                       | 0             | 0              | 0              | 1             | 0              | 0             | 0              | 0         | 0      | 1    | 1                 | 0     | 0                |

# Passing Networks

# China PR

| #  | Passes From ↓ to → | ZHU Yu | LI Mengwen | YAO Wei | ZHANG Rui | WANG Shanshan | YANG Lina | LOU Jiahui | CHEN Qiaozhu | YAO Lingwei | WU Chengshu | ZHANG Linyan | DOU Jiaxing | ZHANG Xin | WANG Shuang | TANG Jiali |
|----|--------------------|--------|------------|---------|-----------|---------------|-----------|------------|--------------|-------------|-------------|--------------|-------------|-----------|-------------|------------|
| 1  | ZHU Yu             |        | 0          | 4       | 0         | 6             | 1         | 1          | 1            | 0           | 0           | 0            | 0           | 2         | 0           | 0          |
| 2  | LI Mengwen         | 0      |            | 0       | 0         | 8             | 0         | 1          | 0            | 3           | 3           | 3            | 0           | 1         | 1           | 0          |
| 8  | YAO Wei            | 5      | 2          |         | 0         | 10            | 9         | 0          | 10           | 6           | 0           | 0            | 1           | 1         | 2           | 0          |
| 10 | ZHANG Rui          | 0      | 2          | 0       |           | 1             | 0         | 1          | 0            | 1           | 2           | 0            | 0           | 0         | 0           | 0          |
| 11 | WANG Shanshan      | 1      | 3          | 12      | 1         |               | 1         | 0          | 2            | 8           | 4           | 2            | 0           | 0         | 1           | 0          |
| 13 | YANG Lina          | 1      | 1          | 9       | 0         | 0             |           | 1          | 6            | 2           | 1           | 5            | 0           | 1         | 5           | 0          |
| 14 | LOU Jiahui         | 0      | 2          | 0       | 2         | 0             | 0         |            | 0            | 1           | 0           | 2            | 0           | 0         | 0           | 0          |
| 15 | CHEN Qiaozhu       | 0      | 0          | 7       | 1         | 0             | 5         | 2          |              | 1           | 0           | 4            | 0           | 2         | 2           | 0          |
| 16 | YAO Lingwei        | 1      | 7          | 4       | 1         | 5             | 4         | 0          | 2            |             | 5           | 3            | 0           | 2         | 0           | 0          |
| 17 | WU Chengshu        | 0      | 3          | 0       | 1         | 1             | 0         | 3          | 0            | 5           |             | 4            | 0           | 0         | 0           | 0          |
| 19 | ZHANG Linyan       | 0      | 1          | 4       | 0         | 0             | 2         | 0          | 7            | 4           | 4           |              | 0           | 6         | 4           | 0          |
| 3  | DOU Jiaxing        | 0      | 0          | 0       | 0         | 0             | 0         | 0          | 0            | 0           | 0           | 0            |             | 0         | 0           | 0          |
| 6  | ZHANG Xin          | 0      | 4          | 1       | 0         | 0             | 1         | 0          | 2            | 0           | 0           | 4            | 0           |           | 1           | 1          |
| 7  | WANG Shuang        | 1      | 1          | 3       | 0         | 0             | 7         | 0          | 1            | 0           | 0           | 5            | 0           | 4         |             | 0          |
| 18 | TANG Jiali         | 0      | 0          | 0       | 0         | 0             | 0         | 0          | 0            | 0           | 0           | 0            | 0           | 0         | 1           |            |

| Top 5 Player to Player Passers |               |                        |
|--------------------------------|---------------|------------------------|
| Player                         | Passed To     | % of Total Team Passes |
| WANG Shanshan                  | YAO Wei       | 3.9%                   |
| YAO Wei                        | CHEN Qiaozhu  | 3.3%                   |
| YAO Wei                        | WANG Shanshan | 3.3%                   |
| YAO Wei                        | YANG Lina     | 2.9%                   |
| YANG Lina                      | YAO Wei       | 2.9%                   |

# Passing Networks

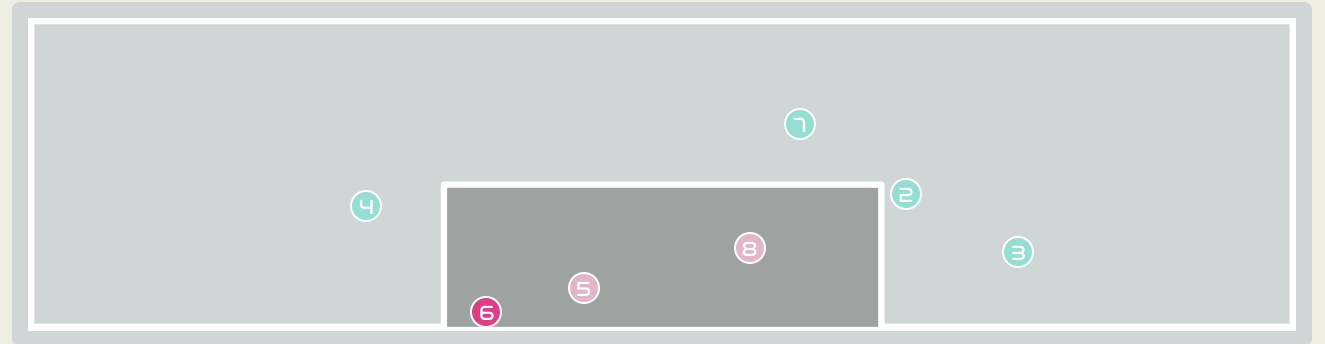
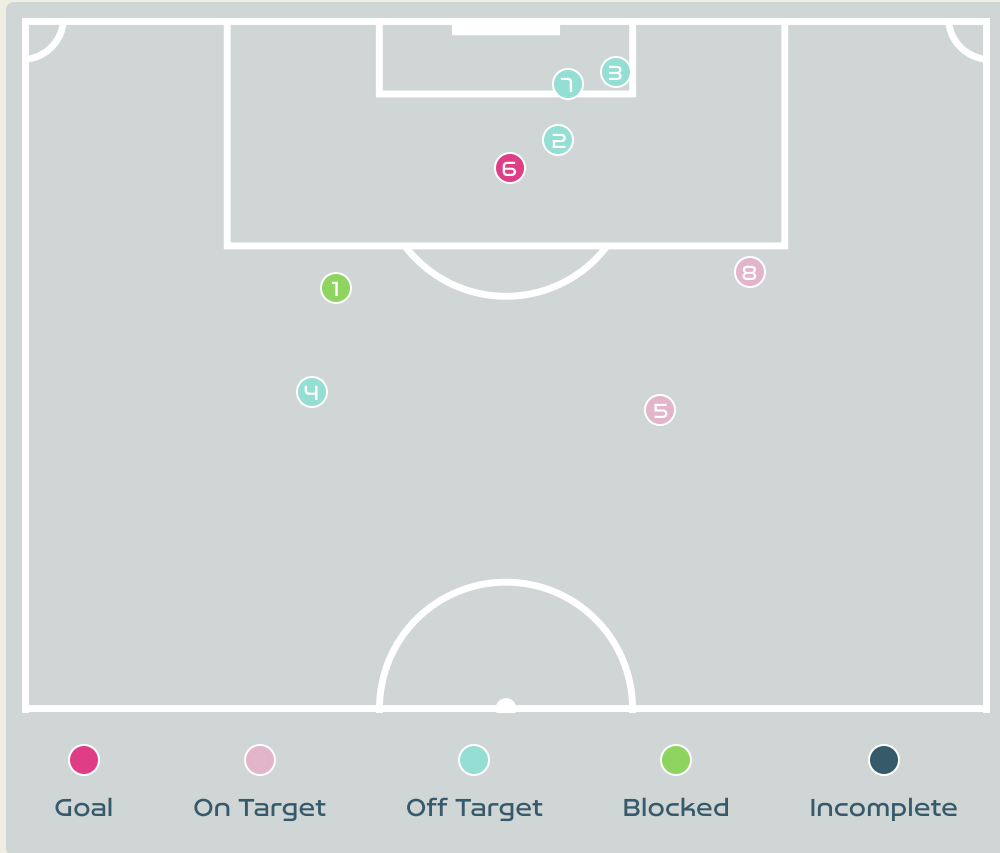


| #  | Passes From ↓ to →  | THEUS Kerly | JOSEPH Tabita | MORYL Maudeline | LOUIS Batcheba | JEUDY Sherly | MONDESIR Nerilia | PETIT-FRERE Betina | PIERRE-LOUIS Dayana | LOUIS Kethna | MATHURIN Ruthny | BORGELLA Roselord | 440344 | SURPRIS Chelsea | DUMORNAY Melchie | ETIENNE Danielle | ELOISSAINT Roseline | JOSEPH Shwendesky |
|----|---------------------|-------------|---------------|-----------------|----------------|--------------|------------------|--------------------|---------------------|--------------|-----------------|-------------------|--------|-----------------|------------------|------------------|---------------------|-------------------|
| 1  | THEUS Kerly         |             | 5             | 0               | 0              | 0            | 0                | 0                  | 0                   | 10           | 0               | 0                 | 0      | 1               | 0                | 1                | 0                   | 0                 |
| 4  | JOSEPH Tabita       | 2           |               | 1               | 0              | 0            | 1                | 15                 | 1                   | 23           | 0               | 0                 | 0      | 0               | 0                | 1                | 0                   | 0                 |
| 5  | MORYL Maudeline     | 0           | 2             |                 | 1              | 1            | 0                | 3                  | 0                   | 1            | 0               | 0                 | 0      | 0               | 0                | 0                | 0                   | 0                 |
| 7  | LOUIS Batcheba      | 0           | 0             | 0               |                | 2            | 0                | 2                  | 0                   | 0            | 0               | 2                 | 0      | 0               | 0                | 0                | 0                   | 0                 |
| 9  | JEUDY Sherly        | 0           | 2             | 0               | 3              |              | 1                | 2                  | 1                   | 0            | 3               | 0                 | 0      | 0               | 1                | 0                | 0                   | 0                 |
| 10 | MONDESIR Nerilia    | 0           | 0             | 0               | 0              | 0            |                  | 1                  | 0                   | 1            | 1               | 1                 | 0      | 0               | 4                | 1                | 0                   | 0                 |
| 13 | PETIT-FRERE Betina  | 0           | 18            | 1               | 4              | 0            | 1                |                    | 0                   | 1            | 0               | 0                 | 0      | 5               | 0                | 0                | 0                   | 0                 |
| 19 | PIERRE-LOUIS Dayana | 0           | 3             | 1               | 3              | 1            | 2                | 3                  |                     | 2            | 6               | 1                 | 0      | 0               | 2                | 0                | 1                   | 0                 |
| 20 | LOUIS Kethna        | 0           | 10            | 3               | 1              | 4            | 6                | 0                  | 4                   |              | 12              | 1                 | 0      | 0               | 2                | 0                | 1                   | 0                 |
| 21 | MATHURIN Ruthny     | 0           | 0             | 0               | 1              | 0            | 5                | 0                  | 4                   | 5            |                 | 5                 | 0      | 0               | 2                | 0                | 0                   | 0                 |
| 22 | BORGELLA Roselord   | 0           | 0             | 0               | 0              | 3            | 1                | 0                  | 1                   | 0            | 1               |                   | 0      | 0               | 2                | 0                | 1                   | 0                 |
| 0  | 440344              | 0           | 0             | 0               | 0              | 0            | 0                | 0                  | 0                   | 0            | 0               | 0                 |        | 0               | 0                | 0                | 0                   | 0                 |
| 2  | SURPRIS Chelsea     | 0           | 0             | 0               | 0              | 0            | 0                | 3                  | 0                   | 0            | 0               | 1                 | 0      |                 | 0                | 1                | 1                   | 0                 |
| 6  | DUMORNAY Melchie    | 0           | 1             | 0               | 0              | 1            | 1                | 0                  | 2                   | 2            | 2               | 1                 | 0      | 0               |                  | 1                | 0                   | 0                 |
| 8  | ETIENNE Danielle    | 0           | 3             | 0               | 0              | 0            | 0                | 0                  | 0                   | 0            | 0               | 0                 | 0      | 3               | 0                |                  | 1                   | 0                 |
| 11 | ELOISSAINT Roseline | 0           | 0             | 0               | 0              | 0            | 1                | 1                  | 0                   | 0            | 0               | 3                 | 0      | 0               | 2                | 0                |                     | 0                 |
| 17 | JOSEPH Shwendesky   | 0           | 0             | 0               | 0              | 0            | 1                | 0                  | 0                   | 0            | 0               | 0                 | 0      | 0               | 0                | 0                | 1                   |                   |

## Top 5 Player to Player Passers

| Player             | Passed To          | % of Total Team Passes |
|--------------------|--------------------|------------------------|
| JOSEPH Tabita      | LOUIS Kethna       | 8.8%                   |
| PETIT-FRERE Betina | JOSEPH Tabita      | 6.9%                   |
| JOSEPH Tabita      | PETIT-FRERE Betina | 5.8%                   |
| LOUIS Kethna       | MATHURIN Ruthny    | 4.6%                   |
| THEUS Kerly        | LOUIS Kethna       | 3.8%                   |

# Attempts at Goal



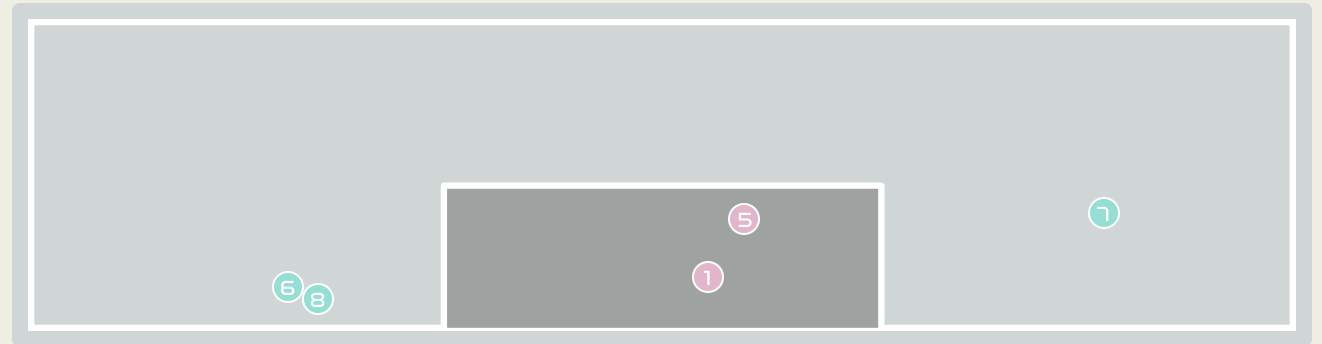
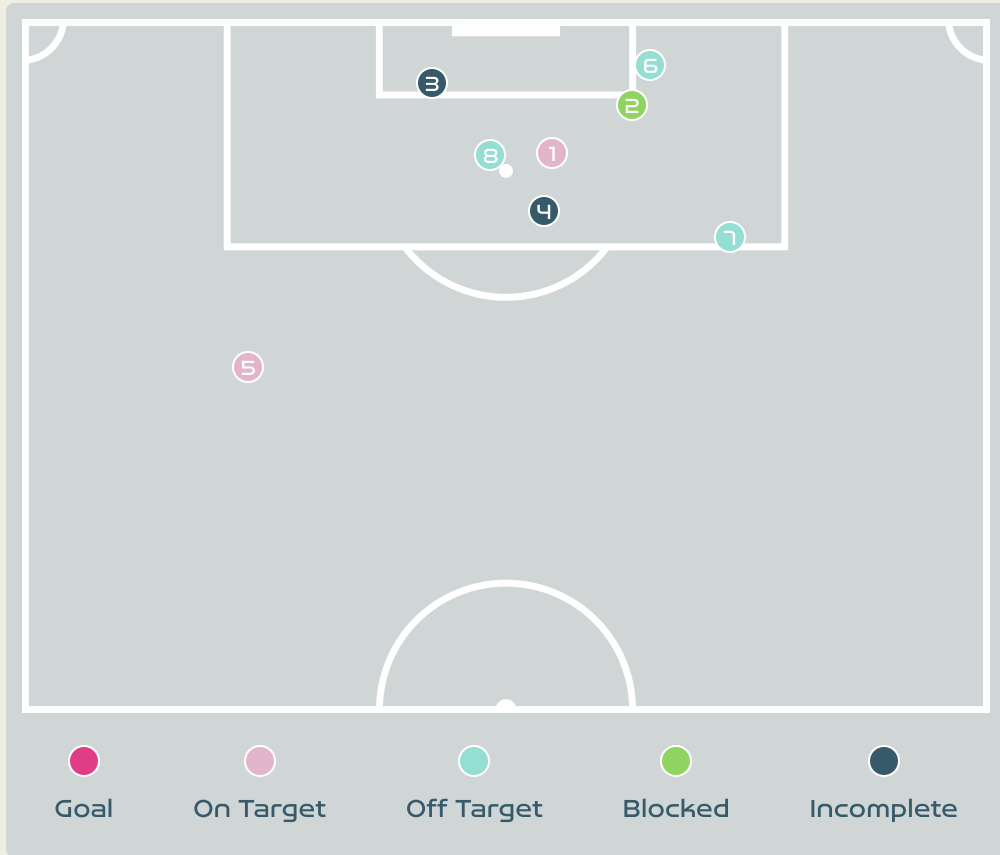
| Key                                     | Outcome    | Shots |
|---|------------|-------|
| <span style="color: pink;">●</span>     | Goals      | 1     |
| <span style="color: pink;">●</span>     | On Target  | 2     |
| <span style="color: cyan;">●</span>     | Off Target | 4     |
| <span style="color: green;">●</span>    | Blocked    | 1     |
| <span style="color: darkblue;">●</span> | Incomplete | 0     |






# Attempts at Goal

**China PR**

| Time | Player           | Outcome              | Body Part  | Delivery Type |
|------|------------------|----------------------|------------|---------------|
| 7    | 8 YAO Wei        | Incomplete - Blocked | Left Foot  | Pass          |
| 15   | 14 LOU Jiahui    | Off Target - Saved   | Right Foot | Cross         |
| 20   | 11 WANG Shanshan | Off Target           | Head       | Corner        |
| 22   | 10 ZHANG Rui     | Off Target           | Right Foot | Freekick      |
| 66   | 13 YANG Lina     | On Target - Saved    | Right Foot | Loose Ball    |
| 73   | 7 WANG Shuang    | On Target - Goal     | Left Foot  | Penalty       |
| 77   | 19 ZHANG Linyan  | Off Target           | Head       | Cross         |
| 83   | 19 ZHANG Linyan  | On Target - Saved    | Left Foot  | Pass          |

# Attempts at Goal



| Key   | Outcome    | Shots |
|---|------------|-------|
|  | Goals      | 0     |
|  | On Target  | 2     |
|  | Off Target | 3     |
|  | Blocked    | 1     |
|  | Incomplete | 2     |

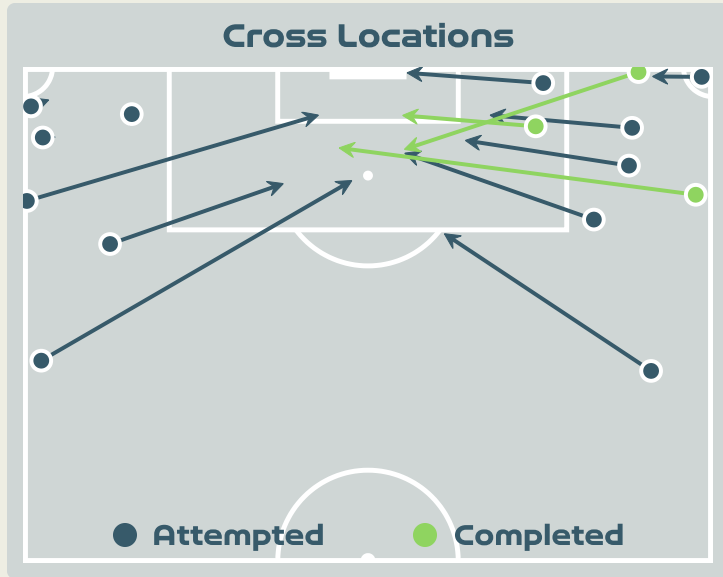


# Attempts at Goal

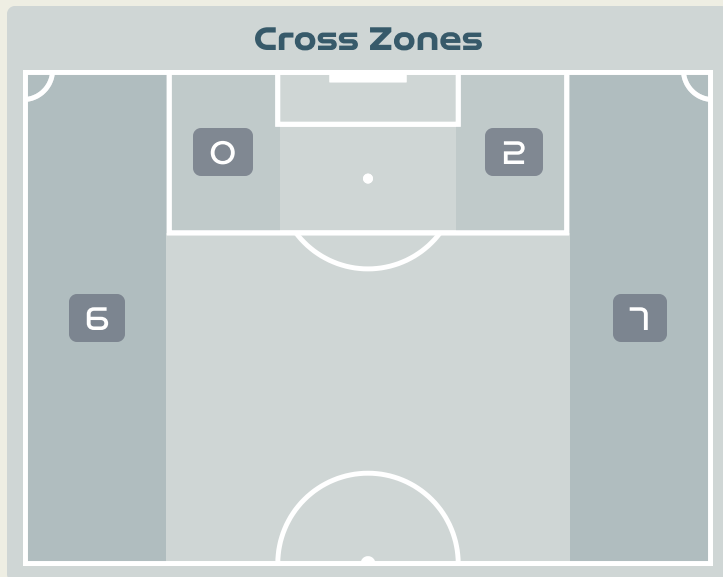
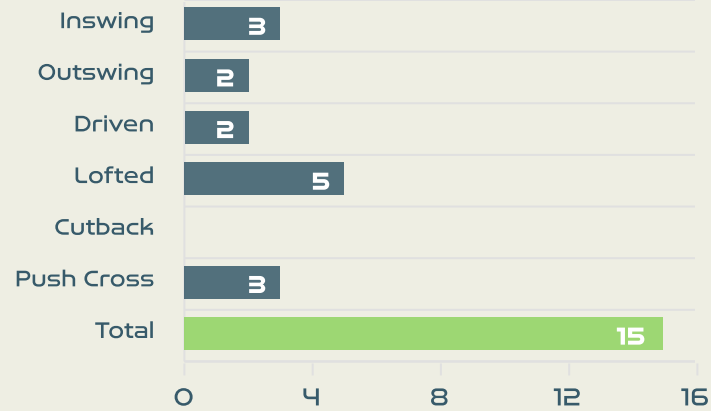
**Haiti**

| Time | Player              | Outcome                                | Body Part  | Delivery Type    |
|------|---------------------|--|------------|------------------|
| 52   | 6 DUMORNAY Melchie  | On Target - Saved                      | Right Foot | Loose Ball       |
| 60   | 10 MONDESIR Nerilia | Incomplete - Blocked                   | Right Foot | Loose Ball       |
| 61   | 7 LOUIS Batcheba    | Incomplete - Defensive Event           | Head       | Loose Ball       |
| 67   | 6 DUMORNAY Melchie  | Incomplete - Referee Event             | Right Foot | Pass             |
| 80   | 9 JEUDY Sherly      | On Target - Saved                      | Right Foot | Freekick         |
| 96   | 10 MONDESIR Nerilia | Off Target                             | Right Foot | Ball Progression |
| 97   | 10 MONDESIR Nerilia | Deflected Off Target - Defensive Event | Right Foot | Loose Ball       |
| 98   | 20 LOUIS Kethna     | Off Target                             | Head       | Corner           |

# Crosses (Open Play)



## Delivery Type



Attempted

15

Completed

3

Most Crosses Attempted

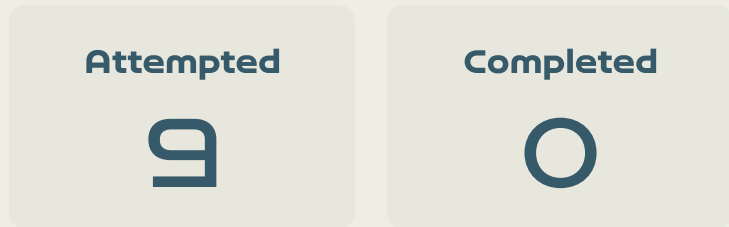
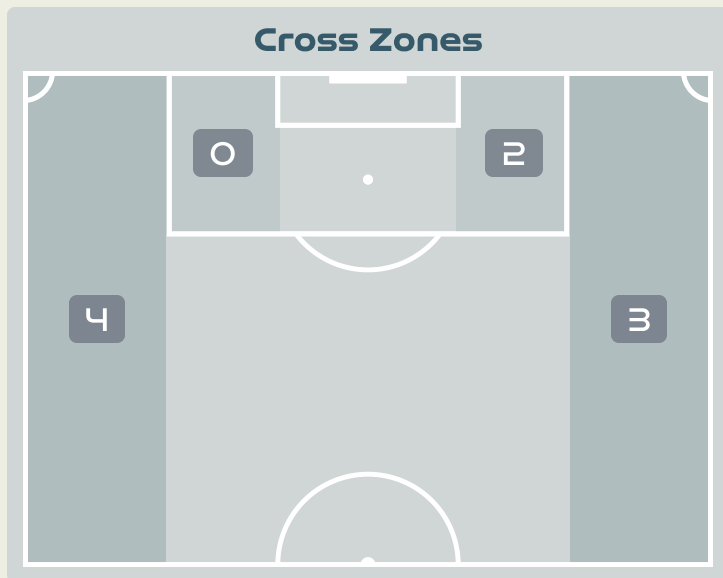
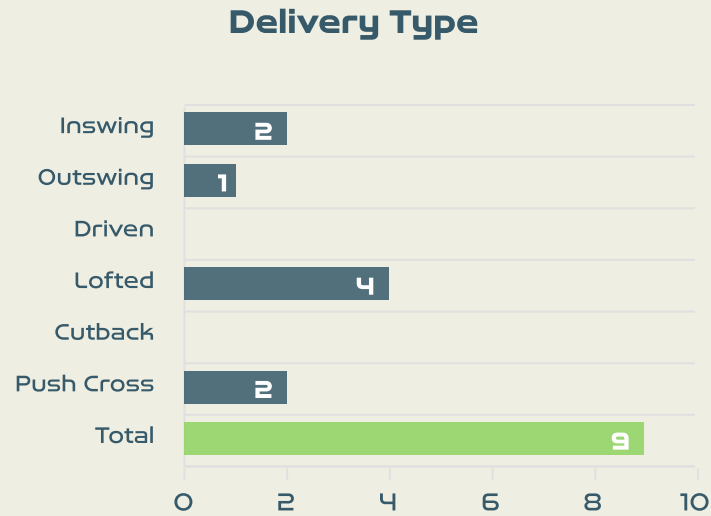
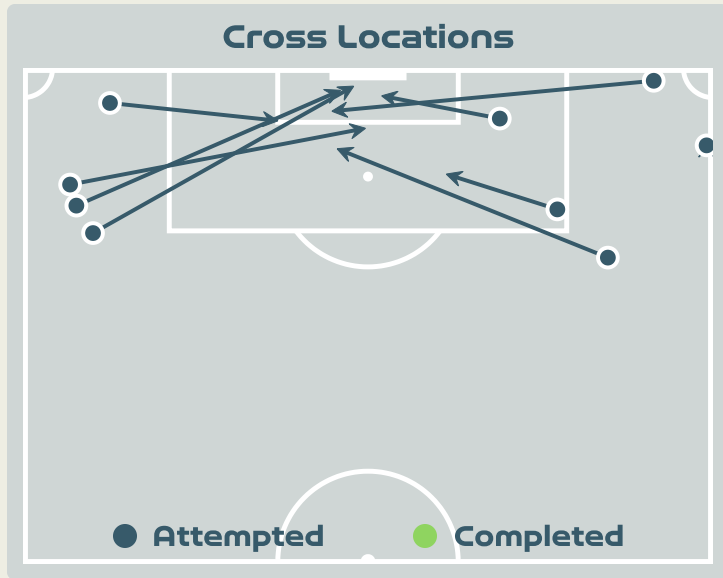
3

ZHANG Xin  
BENCH

| #  | Player        | Inswing | Outswing | Driven | Lofted | Cutback | Push Cross | Total Attempted |
|----|---------------|---------|----------|--------|--------|---------|------------|-----------------|
| 1  | ZHU Yu        | 0       | 0        | 0      | 0      | 0       | 0          | 0               |
| 2  | LI Mengwen    | 0       | 0        | 1      | 2      | 0       | 0          | 3               |
| 8  | YAO Wei       | 0       | 0        | 0      | 0      | 0       | 0          | 0               |
| 10 | ZHANG Rui     | 1       | 1        | 0      | 0      | 0       | 0          | 2               |
| 11 | WANG Shanshan | 0       | 0        | 0      | 0      | 0       | 1          | 1               |
| 13 | YANG Lina     | 0       | 0        | 0      | 0      | 0       | 0          | 0               |
| 14 | LOU Jiahui    | 1       | 0        | 0      | 0      | 0       | 1          | 2               |
| 15 | CHEN Qiaozhu  | 1       | 1        | 0      | 1      | 0       | 0          | 3               |
| 16 | YAO Lingwei   | 0       | 0        | 0      | 0      | 0       | 0          | 0               |
| 17 | WU Chengshu   | 0       | 0        | 0      | 0      | 0       | 0          | 0               |
| 19 | ZHANG Linyan  | 0       | 0        | 1      | 0      | 0       | 0          | 1               |
| 3  | DOU Jiaying   | 0       | 0        | 0      | 0      | 0       | 0          | 0               |
| 6  | ZHANG Xin     | 0       | 0        | 0      | 2      | 0       | 1          | 3               |
| 7  | WANG Shuang   | 0       | 0        | 0      | 0      | 0       | 0          | 0               |
| 18 | TANG Jiali    | 0       | 0        | 0      | 0      | 0       | 0          | 0               |



# Crosses (Open Play)



| #  | Player              | Inswing | Outswing | Driven | Lofted | Cutback | Push Cross | Total Attempted |
|----|---------------------|---------|----------|--------|--------|---------|------------|-----------------|
| 1  | THEUS Kerly         | 0       | 0        | 0      | 0      | 0       | 0          | 0               |
| 4  | JOSEPH Tabita       | 0       | 0        | 0      | 0      | 0       | 0          | 0               |
| 5  | MORYL Maudeline     | 0       | 0        | 0      | 0      | 0       | 0          | 0               |
| 7  | LOUIS Batcheba      | 0       | 0        | 0      | 0      | 0       | 1          | 1               |
| 9  | JEUDY Sherly        | 0       | 0        | 0      | 0      | 0       | 1          | 1               |
| 10 | MONDESIR Nerilia    | 2       | 0        | 0      | 0      | 0       | 0          | 2               |
| 13 | PETIT-FRERE Betina  | 0       | 0        | 0      | 1      | 0       | 0          | 1               |
| 19 | PIERRE-LOUIS Dayana | 0       | 0        | 0      | 0      | 0       | 0          | 0               |
| 20 | LOUIS Kethna        | 0       | 1        | 0      | 0      | 0       | 0          | 1               |
| 21 | MATHURIN Ruthny     | 0       | 0        | 0      | 0      | 0       | 0          | 0               |
| 22 | BORGELLA Roselord   | 0       | 0        | 0      | 3      | 0       | 0          | 3               |
| 2  | SURPRIS Chelsea     | 0       | 0        | 0      | 0      | 0       | 0          | 0               |
| 6  | DUMORNAY Melchie    | 0       | 0        | 0      | 0      | 0       | 0          | 0               |
| 8  | ETIENNE Danielle    | 0       | 0        | 0      | 0      | 0       | 0          | 0               |
| 11 | ELOISSAINT Roseline | 0       | 0        | 0      | 0      | 0       | 0          | 0               |
| 17 | JOSEPH Shwendesky   | 0       | 0        | 0      | 0      | 0       | 0          | 0               |

# China PR

## Offering to Receive

345

Total Offers Made

127

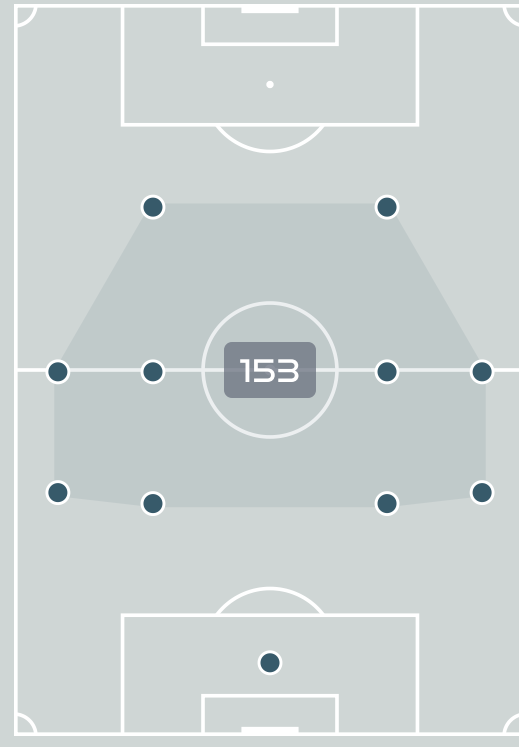
Total Offers Received

Most Offers

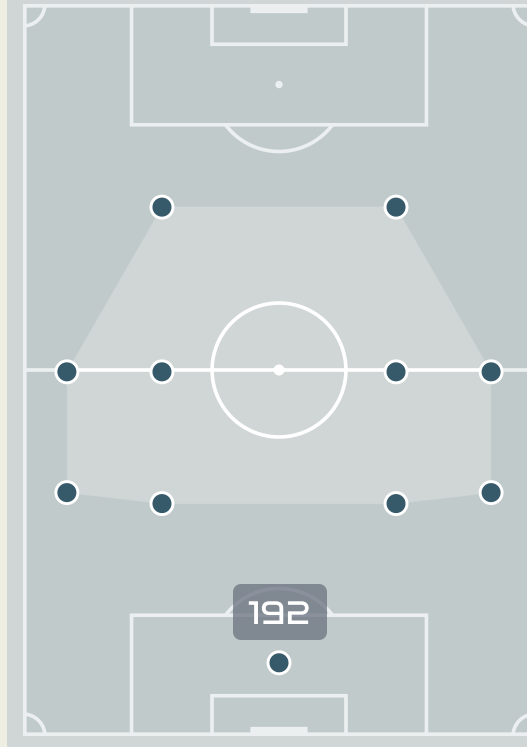
89

ZHANG Linyan  
LEFT WINGER

Offers Made Inside Shape



Offers Made Outside Shape



137

Offers Made in Final Third

163

Offers Made in Middle Third

45

Offers Made in Defensive Third

| #  | Player        | Offers Made | Offers Received | % Made & Received |
|----|---------------|-------------|-----------------|-------------------|
| 1  | ZHU Yu        | 3           | 1               | 33.3%             |
| 2  | LI Mengwen    | 22          | 12              | 54.5%             |
| 8  | YAO Wei       | 29          | 16              | 55.2%             |
| 10 | ZHANG Rui     | 25          | 4               | 16%               |
| 11 | WANG Shanshan | 3           | 1               | 33.3%             |
| 13 | YANG Lina     | 34          | 15              | 44.1%             |
| 14 | LOU Jiahui    | 13          | 5               | 38.5%             |
| 15 | CHEN Qiaozhu  | 45          | 18              | 40%               |
| 16 | YAO Lingwei   | 28          | 14              | 50%               |
| 17 | WU Chengshu   | 14          | 4               | 28.6%             |
| 19 | ZHANG Linyan  | 89          | 25              | 28.1%             |
| 3  | DOU Jiaxing   | 0           | 0               | 0%                |
| 6  | ZHANG Xin     | 11          | 6               | 54.5%             |
| 7  | WANG Shuang   | 17          | 6               | 35.3%             |
| 18 | TANG Jiali    | 12          | 0               | 0%                |



# Offering to Receive

353

Total Offers Made

93

Total Offers Received

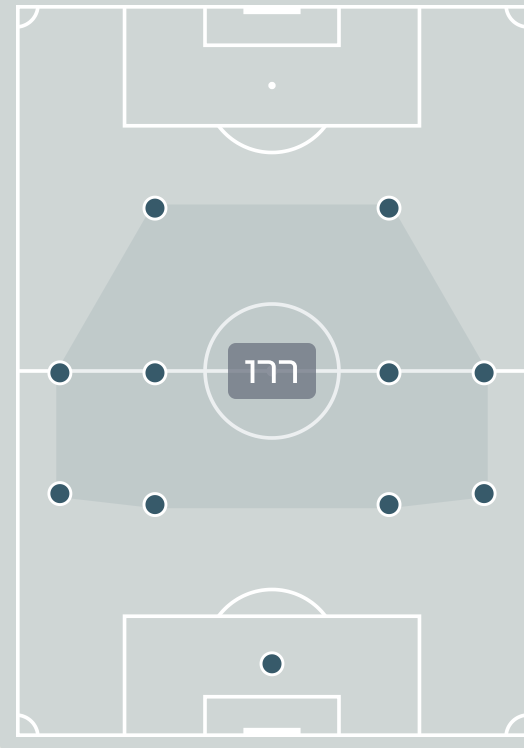
Most Offers

61

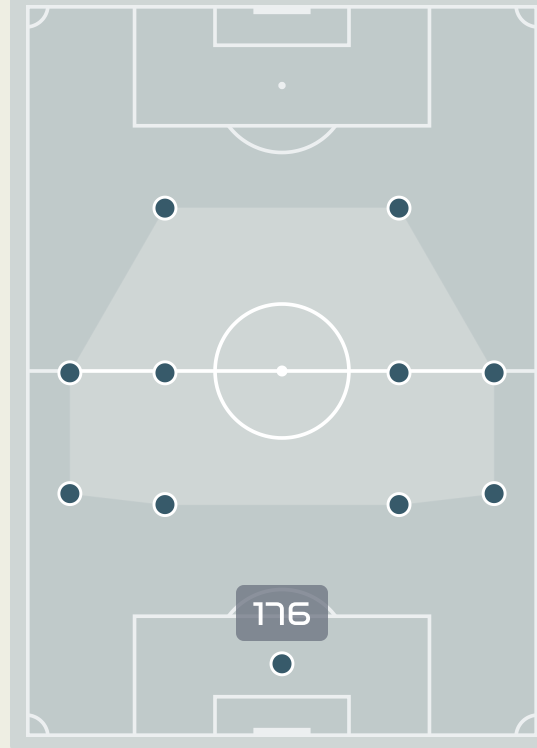
JEUDY Sherly  
ATTACKING MIDFIELD

| #  | Player              | Offers Made | Offers Received | % Made & Received |
|----|---------------------|-------------|-----------------|-------------------|
| 1  | THEUS Kerly         | 0           | 0               | 0%                |
| 4  | JOSEPH Tabita       | 1           | 1               | 100%              |
| 5  | MORYL Maudeline     | 13          | 2               | 15.4%             |
| 7  | LOUIS Batcheba      | 24          | 5               | 20.8%             |
| 9  | JEUDY Sherly        | 61          | 10              | 16.4%             |
| 10 | MONDESIR Nerilia    | 44          | 16              | 36.4%             |
| 13 | PETIT-FRERE Betina  | 30          | 12              | 40%               |
| 19 | PIERRE-LOUIS Dayana | 15          | 3               | 20%               |
| 20 | LOUIS Kethna        | 4           | 1               | 25%               |
| 21 | MATHURIN Ruthny     | 30          | 6               | 20%               |
| 22 | BORGELLA Roselord   | 54          | 10              | 18.5%             |
| 2  | SURPRIS Chelsea     | 9           | 4               | 44.4%             |
| 6  | DUMORNAY Melchie    | 38          | 19              | 50%               |
| 8  | ETIENNE Danielle    | 7           | 2               | 28.6%             |
| 11 | ELOISSAINT Roseline | 16          | 2               | 12.5%             |
| 17 | JOSEPH Shwendesky   | 7           | 0               | 0%                |

Offers Made Inside Shape



Offers Made Outside Shape



143

Offers Made in Final Third

182

Offers Made in Middle Third

28

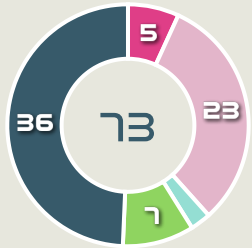
Offers Made in Defensive Third

# China PR

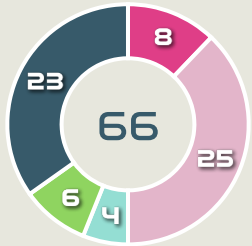
## Movement to Receive

### Movement Types by Phase

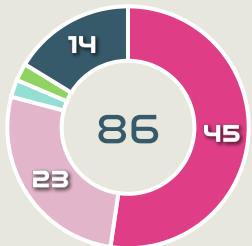
#### Final Third Phase



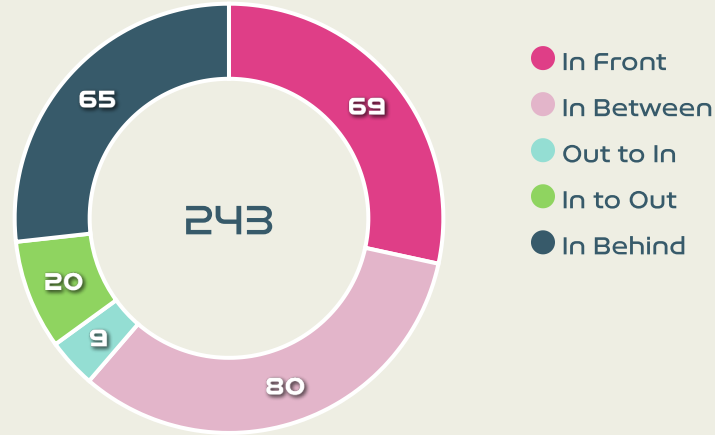
#### Progression Phase



#### Build Up Phase



### All Movement Types

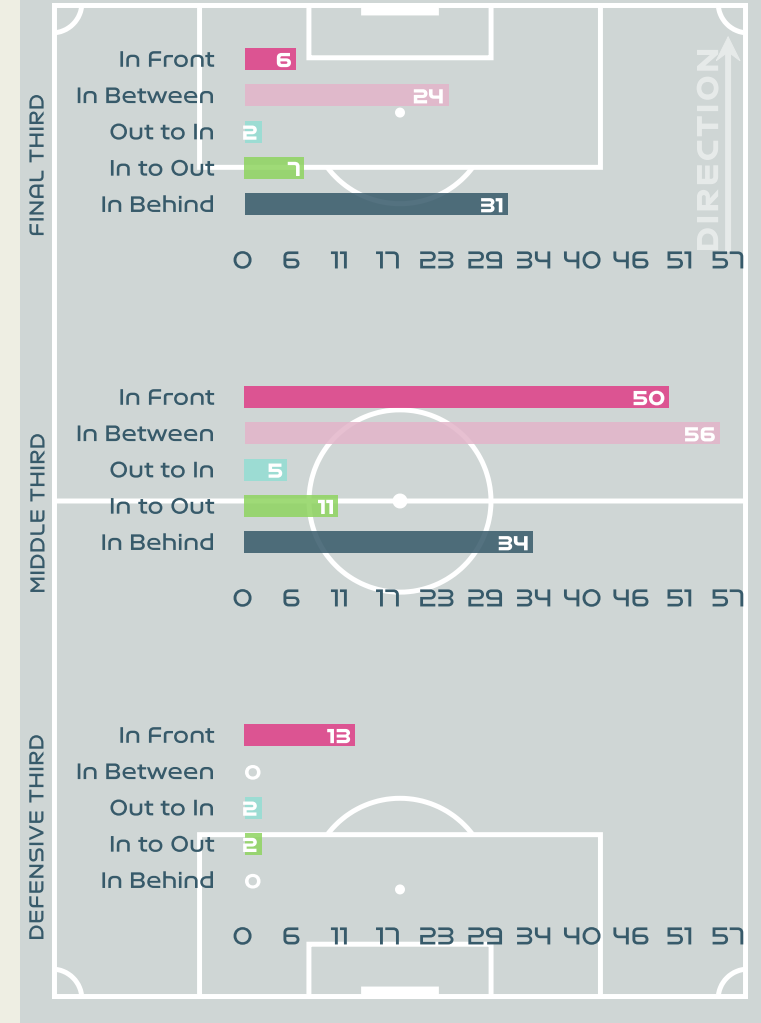


- In Front
- In Between
- Out to In
- In to Out
- In Behind

### Top Ranked Players

| Type       | Player          | Movements |
|------------|-----------------|-----------|
| In Front   | 13 YANG Lina    | 21        |
| In Between | 19 ZHANG Linyan | 29        |
| Out to In  | 19 ZHANG Linyan | 6         |
| In to Out  | 19 ZHANG Linyan | 11        |
| In Behind  | 19 ZHANG Linyan | 25        |

### Movement Types Pitch Third

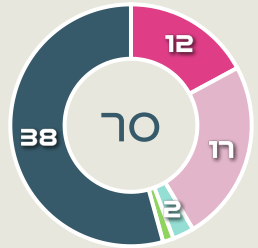




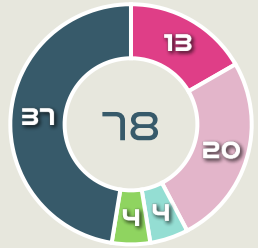
# Movement to Receive

## Movement Types by Phase

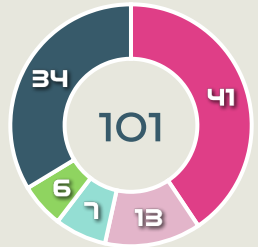
### Final Third Phase



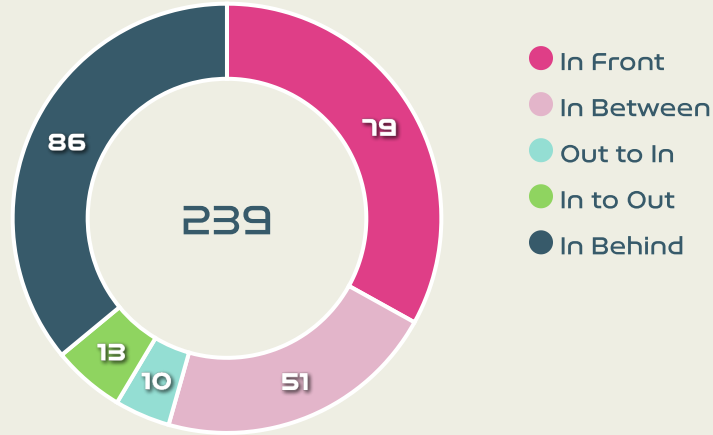
### Progression Phase



### Build Up Phase



## All Movement Types

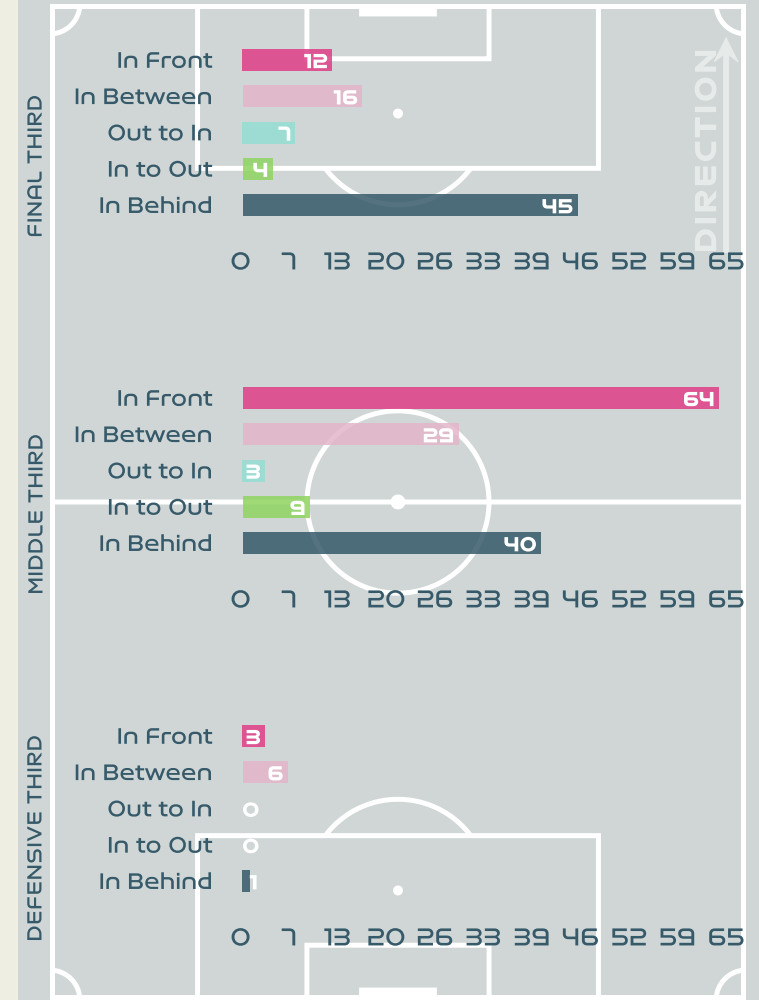


- In Front
- In Between
- Out to In
- In to Out
- In Behind

## Top Ranked Players

| Type       | Player               | Movements |
|------------|----------------------|-----------|
| In Front   | 9 JEUDY Sherly       | 15        |
| In Between | 9 JEUDY Sherly       | 17        |
| Out to In  | 22 BORGELLA Roselord | 4         |
| In to Out  | 10 MONDESIR Nerilia  | 4         |
| In Behind  | 22 BORGELLA Roselord | 21        |

## Movement Types Pitch Third





# OUT OF POSSESSION



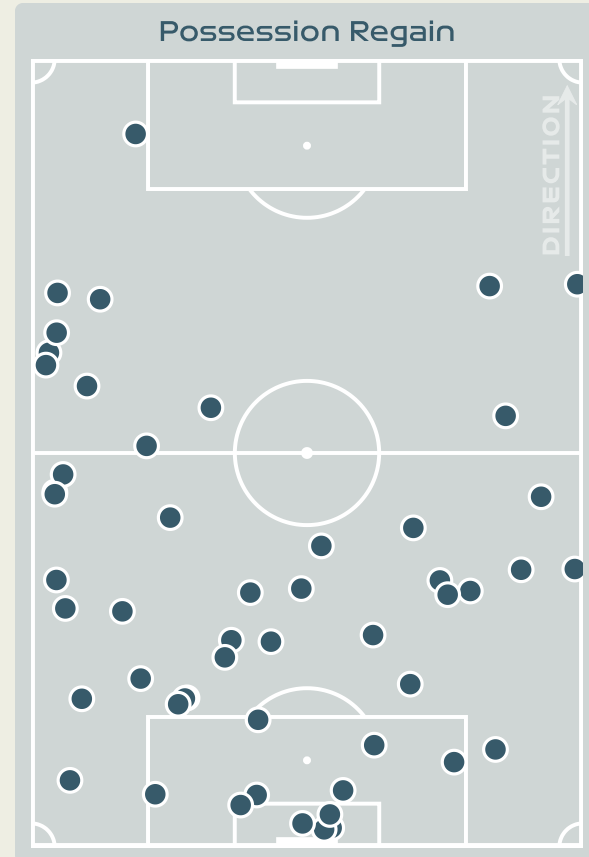
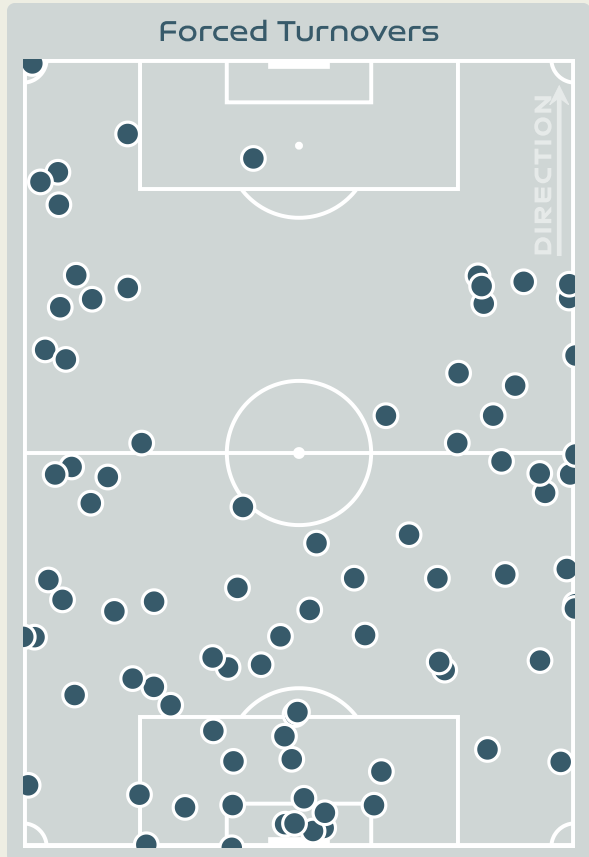
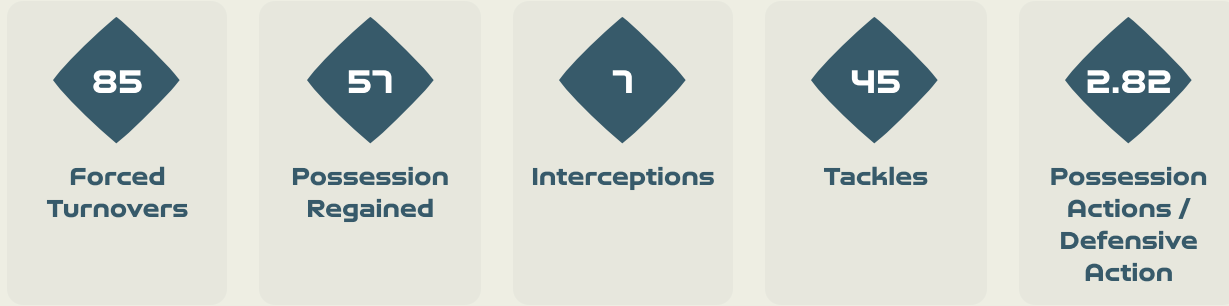
China PR v Haiti



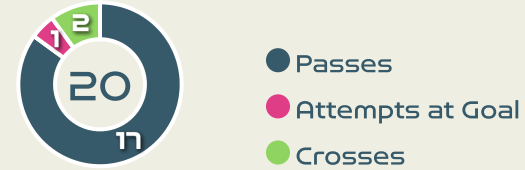


# China PR

## Defensive Actions



## Blocks



## Possession Contests



## Most Possession Regains

**13**  
**CHEN Qiaozhu**  
 LEFT BACK

| #  | Player        | Total Possession Regains |
|----|---------------|--------------------------|
| 1  | ZHU Yu        | 5                        |
| 2  | LI Mengwen    | 9                        |
| 8  | YAO Wei       | 9                        |
| 10 | ZHANG Rui     | 0                        |
| 11 | WANG Shanshan | 9                        |
| 13 | YANG Lina     | 4                        |
| 14 | LOU Jiahui    | 2                        |
| 15 | CHEN Qiaozhu  | 13                       |
| 16 | YAO Lingwei   | 2                        |
| 17 | WU Chengshu   | 0                        |
| 19 | ZHANG Linyan  | 3                        |
| 3  | DOU Jiaxing   | 0                        |
| 6  | ZHANG Xin     | 0                        |
| 7  | WANG Shuang   | 1                        |
| 18 | TANG Jiali    | 0                        |



# Defensive Actions

**66**

Forced Turnovers

**45**

Possession Regained

**9**

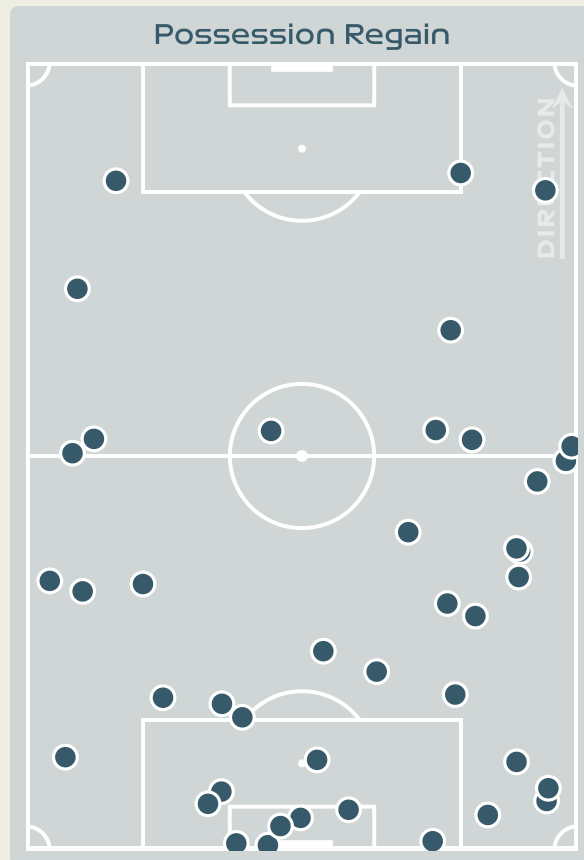
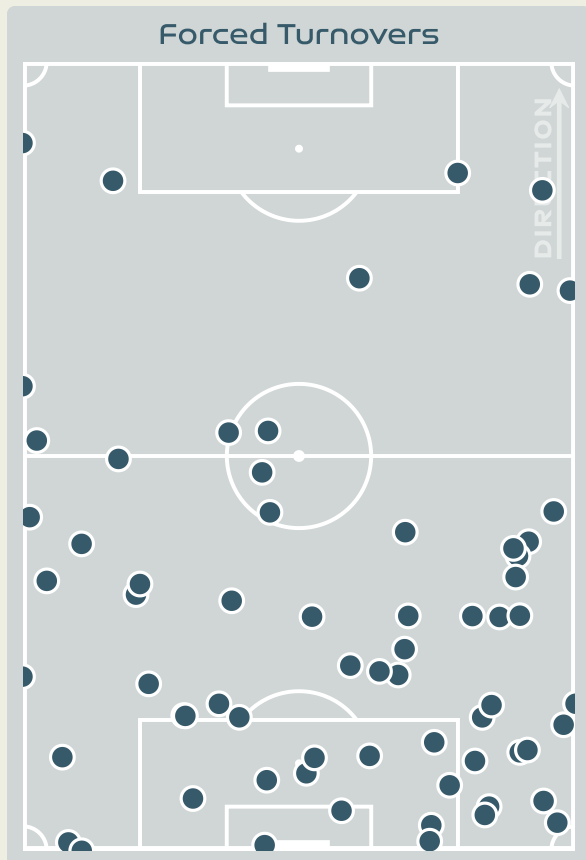
Interceptions

**52**

Tackles

**3.41**

Possession Actions / Defensive Action



## Blocks



## Possession Contests



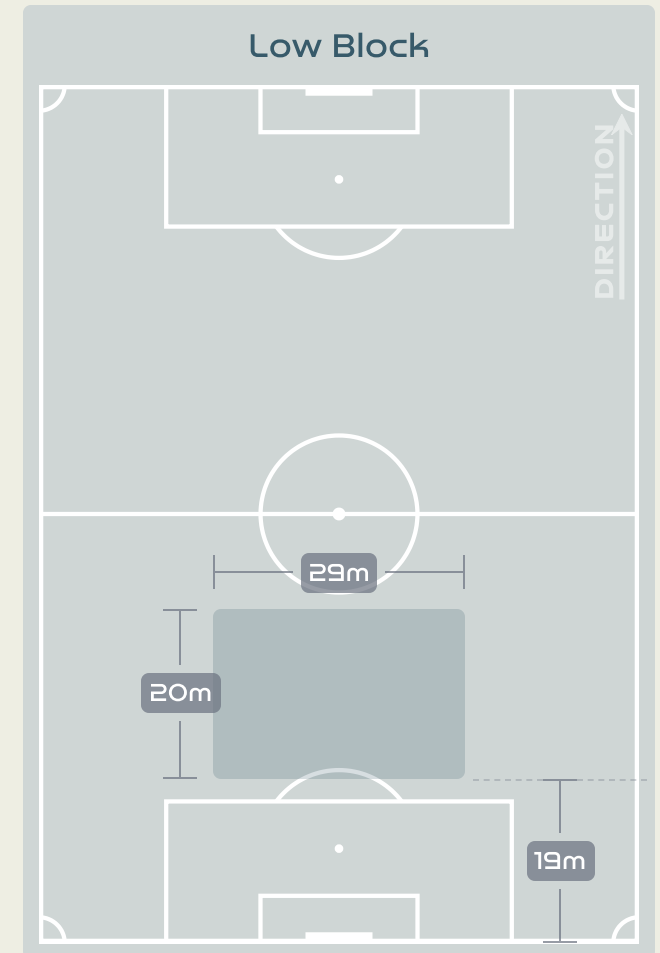
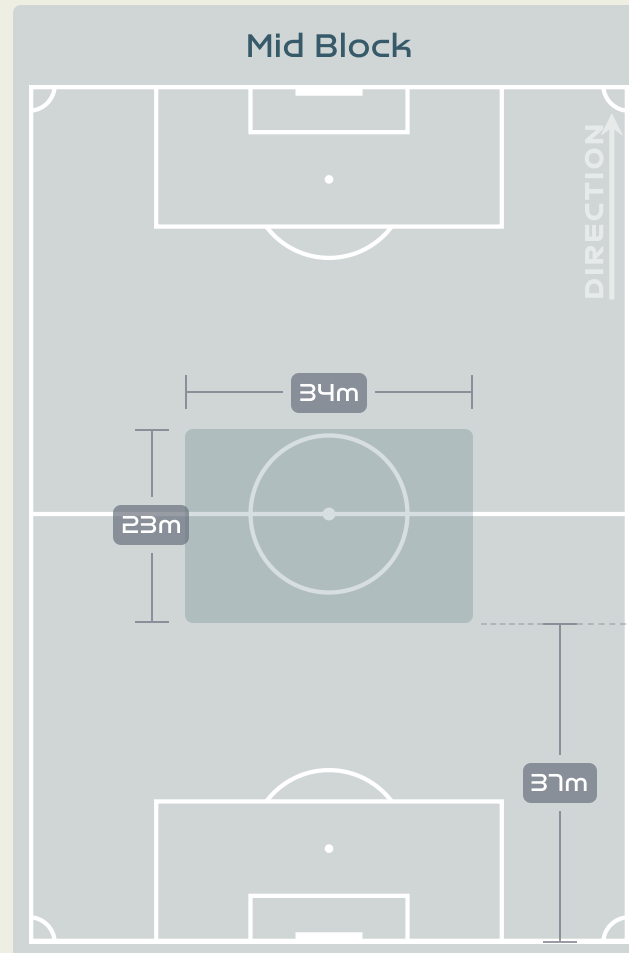
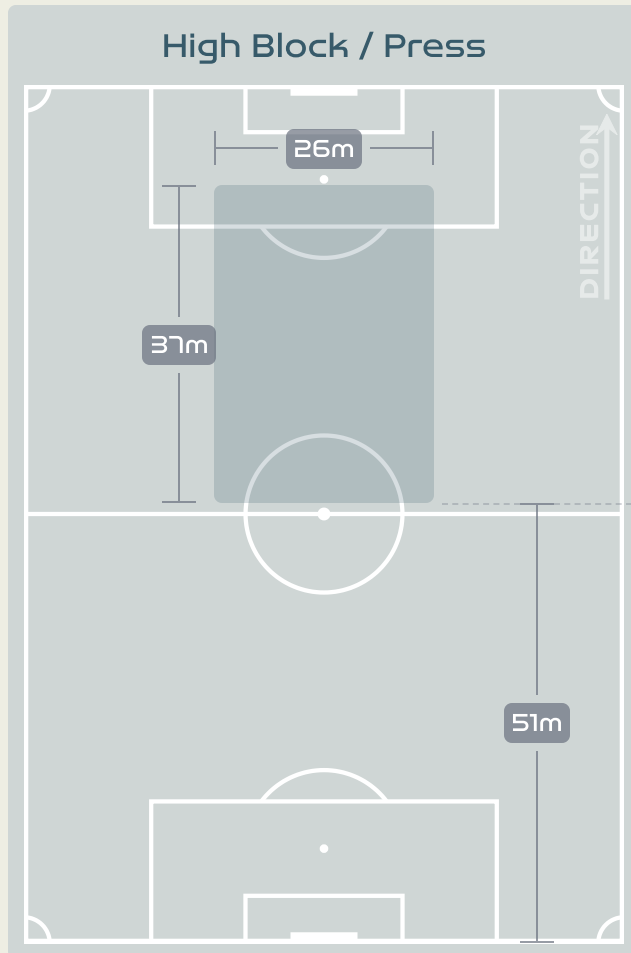
## Most Possession Regains

**9**

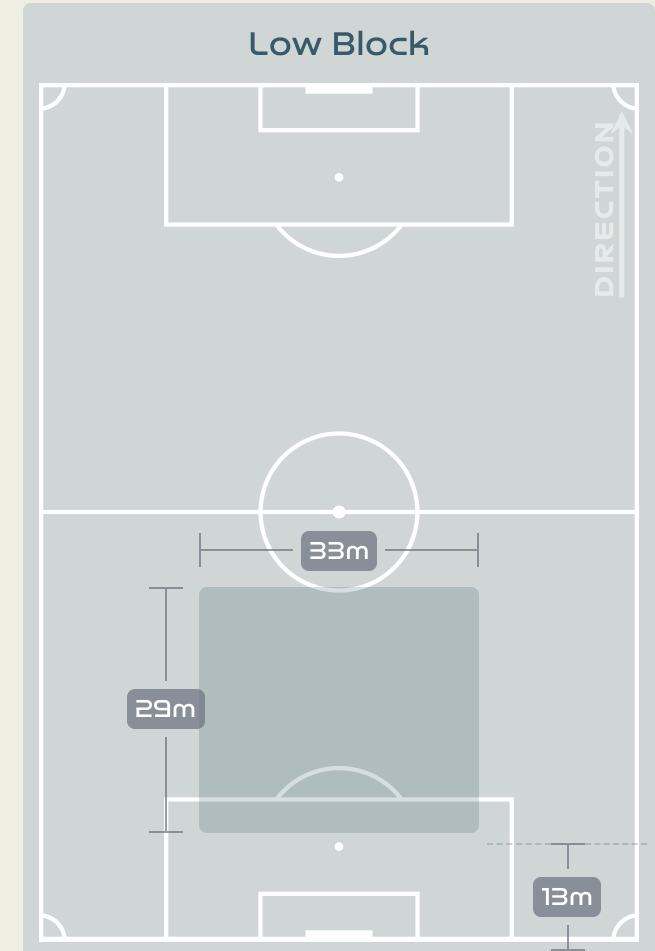
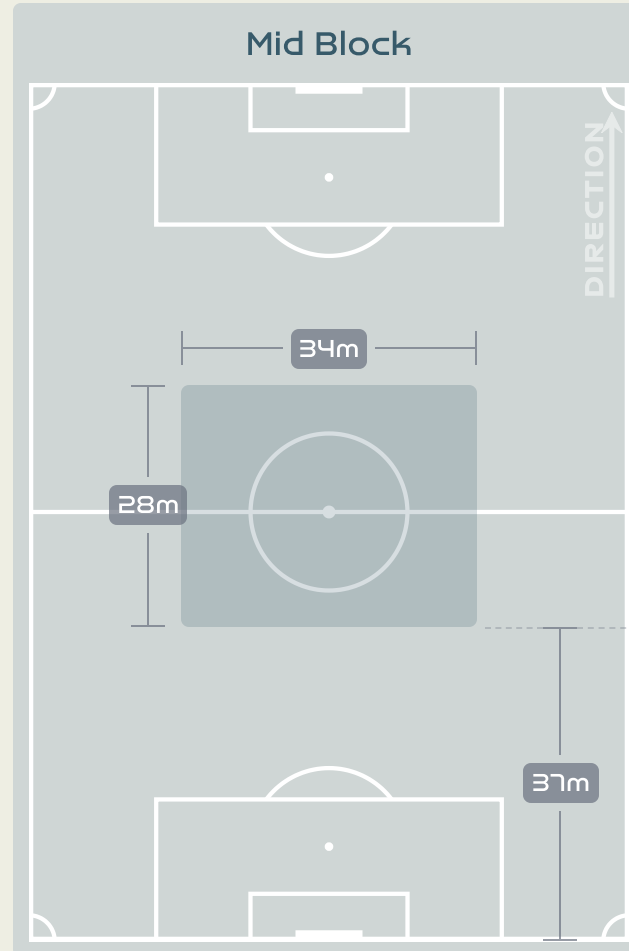
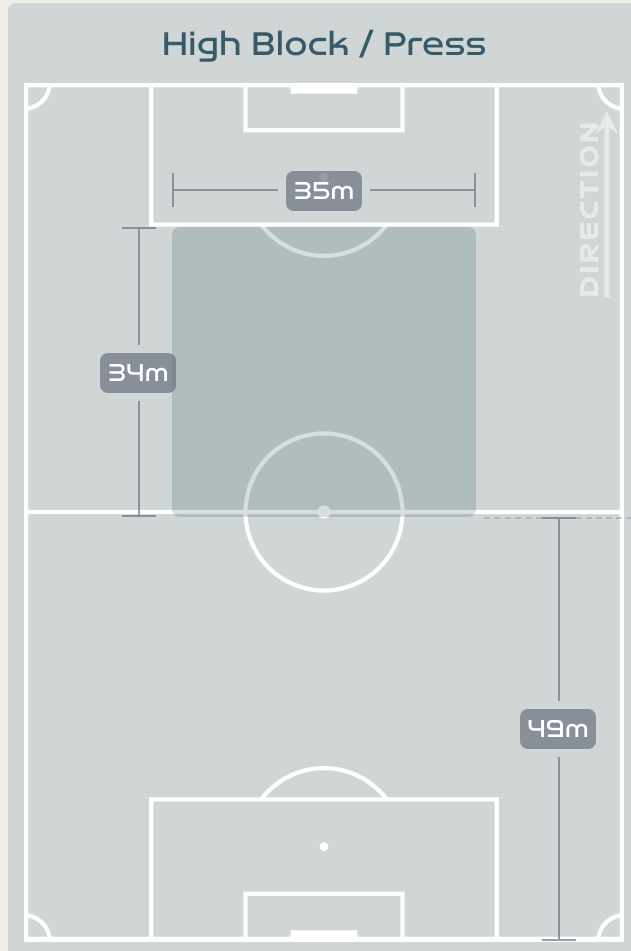
**LOUIS Kethna**  
LEFT CENTRE BACK

| #  | Player              | Total Possession Regains |
|----|---------------------|--------------------------|
| 1  | THEUS Kerly         | 6                        |
| 4  | JOSEPH Tabita       | 4                        |
| 5  | MORYL Maudeline     | 3                        |
| 7  | LOUIS Batcheba      | 2                        |
| 9  | JEUDY Sherly        | 3                        |
| 10 | MONDESIR Nerilia    | 1                        |
| 13 | PETIT-FRERE Betina  | 6                        |
| 19 | PIERRE-LOUIS Dayana | 3                        |
| 20 | LOUIS Kethna        | 9                        |
| 21 | MATHURIN Ruthny     | 2                        |
| 22 | BORGELLA Roselord   | 2                        |
| 2  | SURPRIS Chelsea     | 1                        |
| 6  | DUMORNAY Melchie    | 2                        |
| 8  | ETIENNE Danielle    | 1                        |
| 11 | ELOISSAINT Roseline | 0                        |
| 17 | JOSEPH Shwendesky   | 0                        |

# Defensive Line Height & Team Length



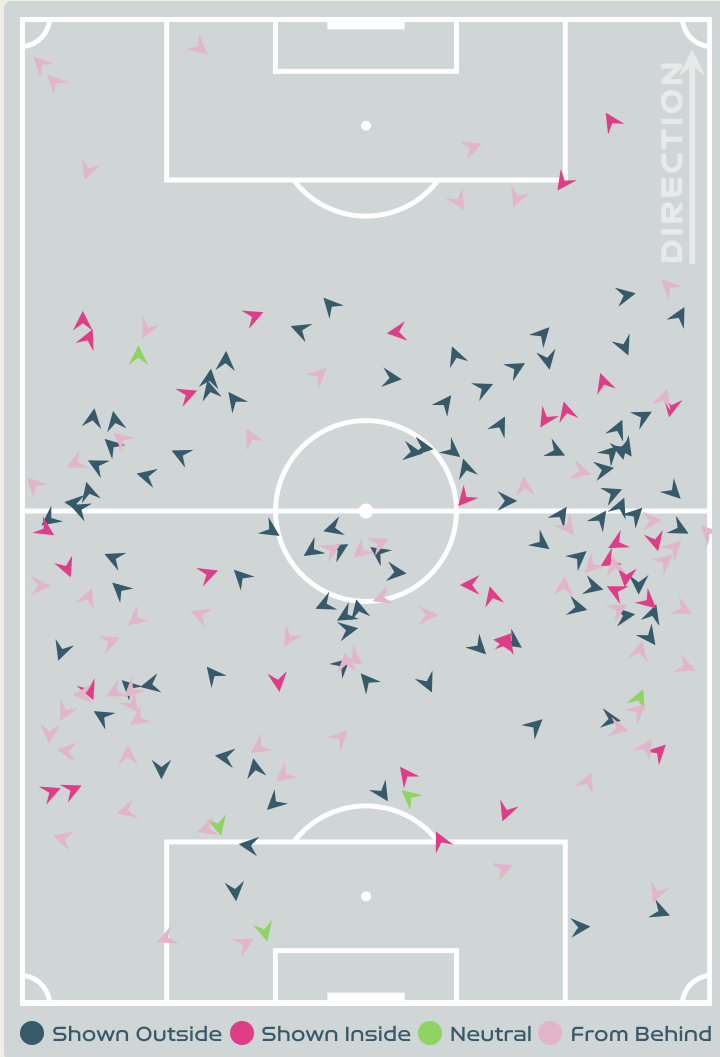
# Defensive Line Height & Team Length



# Defensive Pressure

## China PR

## Haiti



|        |                            |       |
|--------|----------------------------|-------|
| 191    | Total Pressures            | 243   |
| 57     | Direct Pressures           | 71    |
| 1.62s  | Avg Pressure Duration      | 1.5s  |
| 85     | Forced Turnovers           | 66    |
| 10.17s | Ball Recovery Time         | 10.7s |
| 67     | Pushing on into Pressing   | 91    |
| 164    | Pushing on                 | 224   |
| 33     | Pressing Direction Inside  | 38    |
| 88     | Pressing Direction Outside | 121   |

**Most Direct Pressures**

**9**

**LI Mengwen**  
RIGHT BACK

**Most Direct Pressures**

**10**

**LOUIS Batcheba**  
ATTACKING MIDFIELD RIGHT





# GOALKEEPING



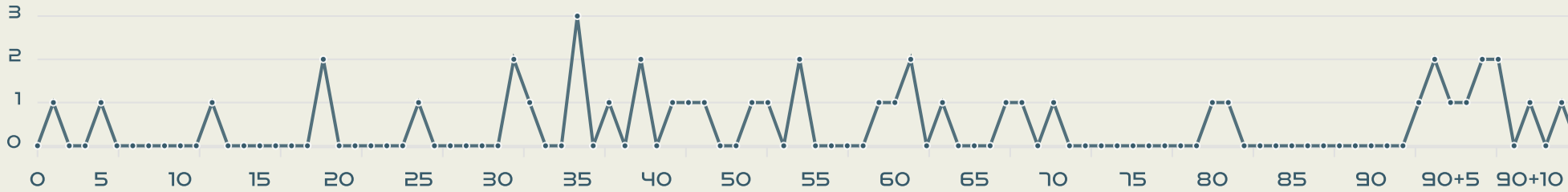
China PR v Haiti



# Goalkeeping Involvement

## China PR

### China PR GK Involvement Timeline

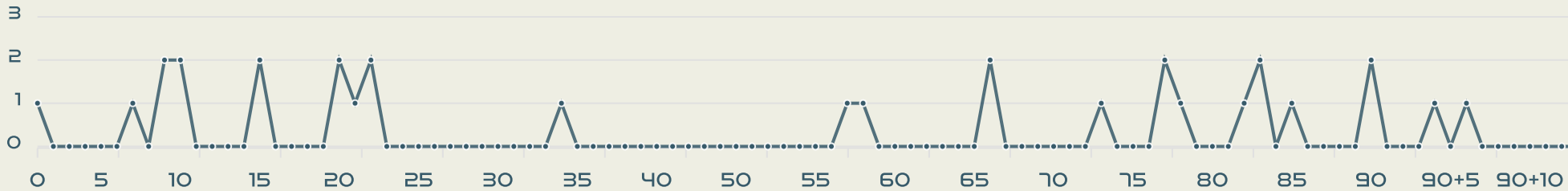


**43**  
Total Involvements



## Haiti

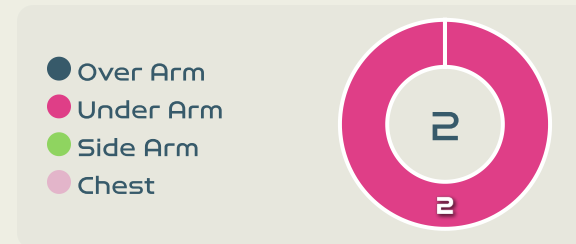
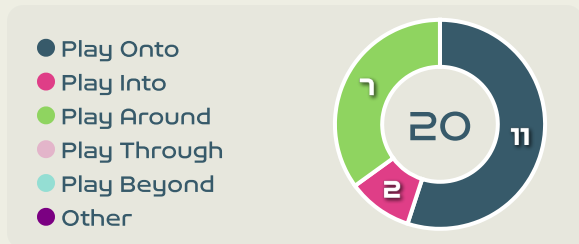
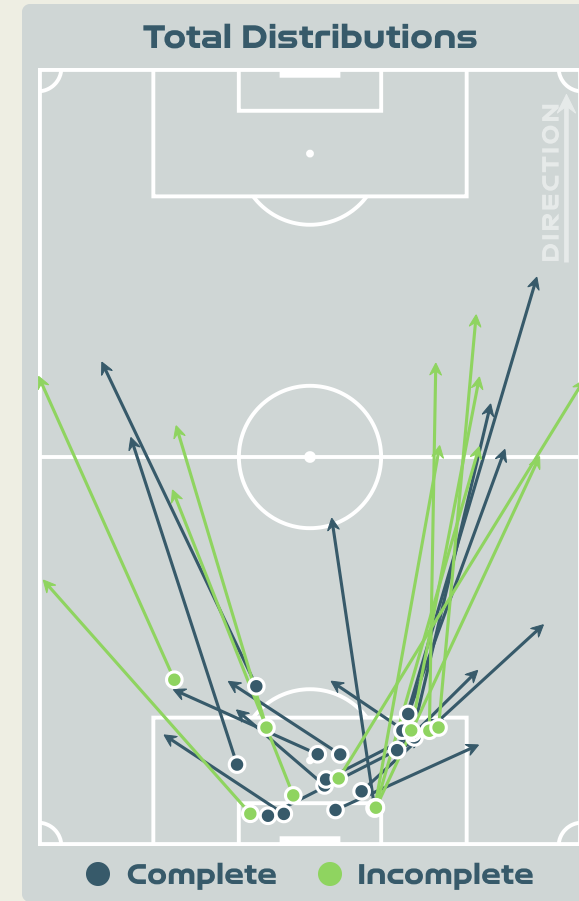
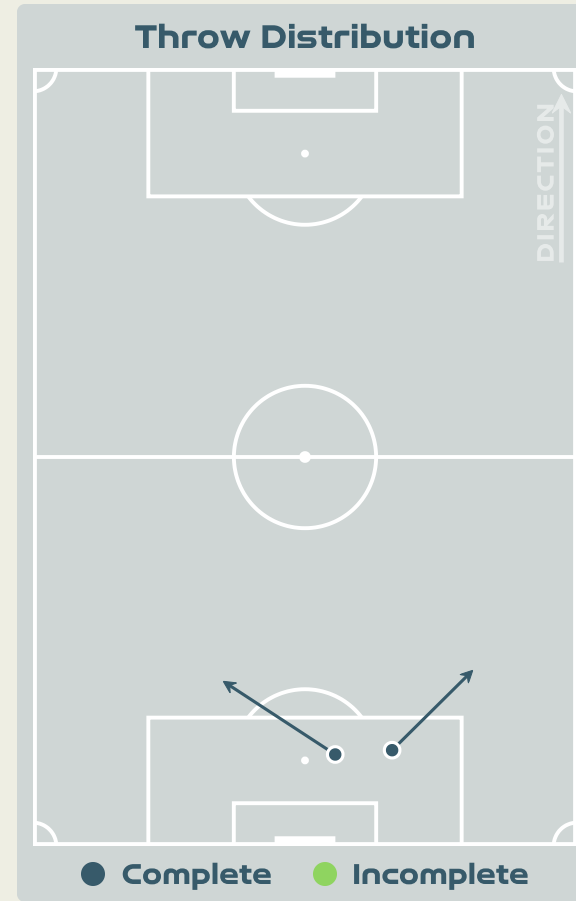
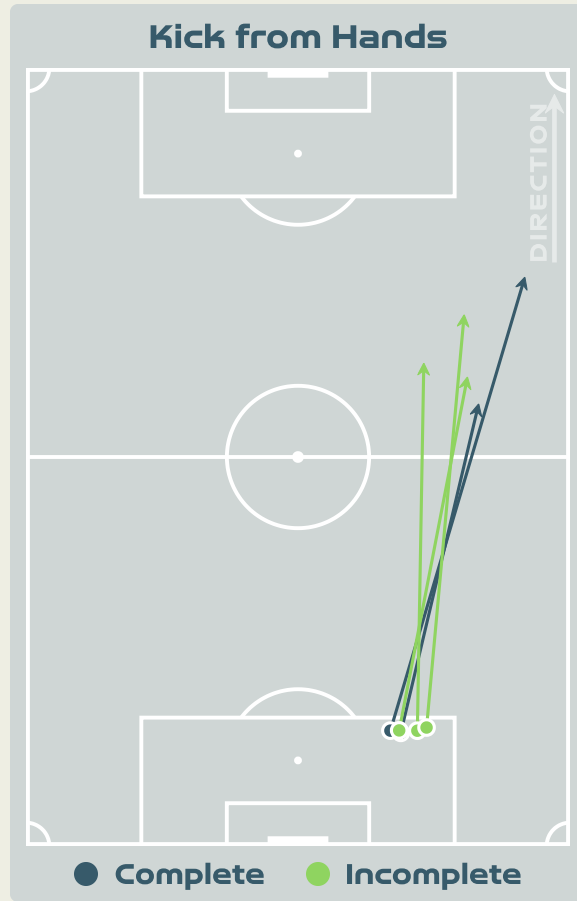
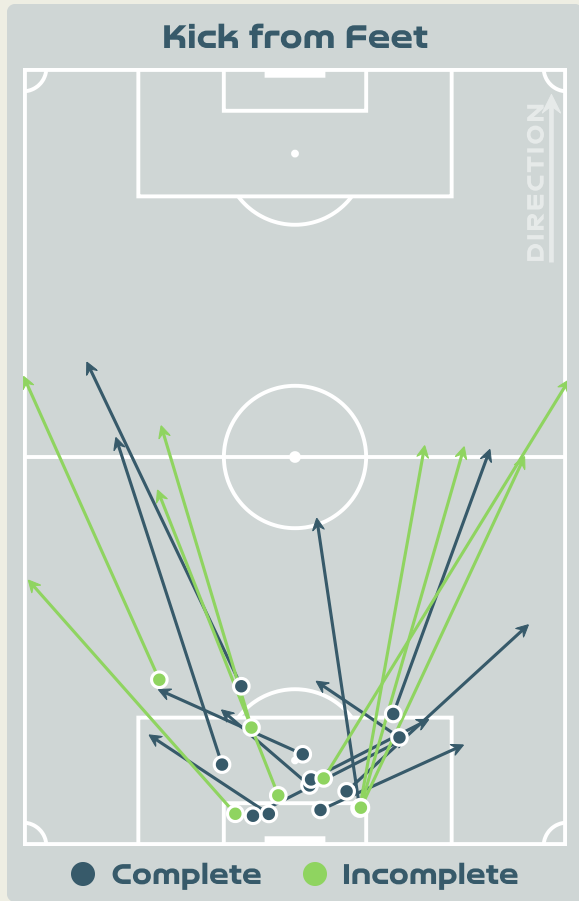
### Haiti GK Involvement Timeline



**30**  
Total Involvements

# Goalkeeping Distribution

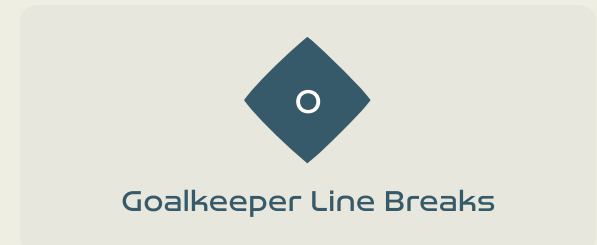
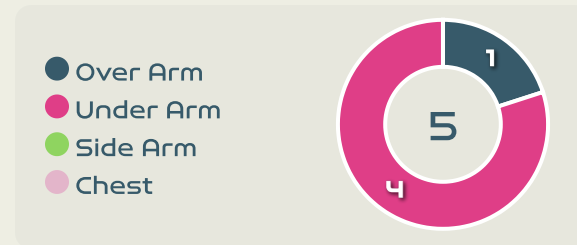
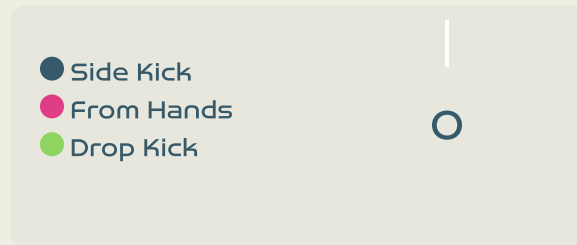
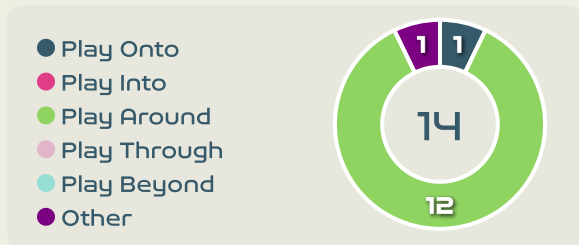
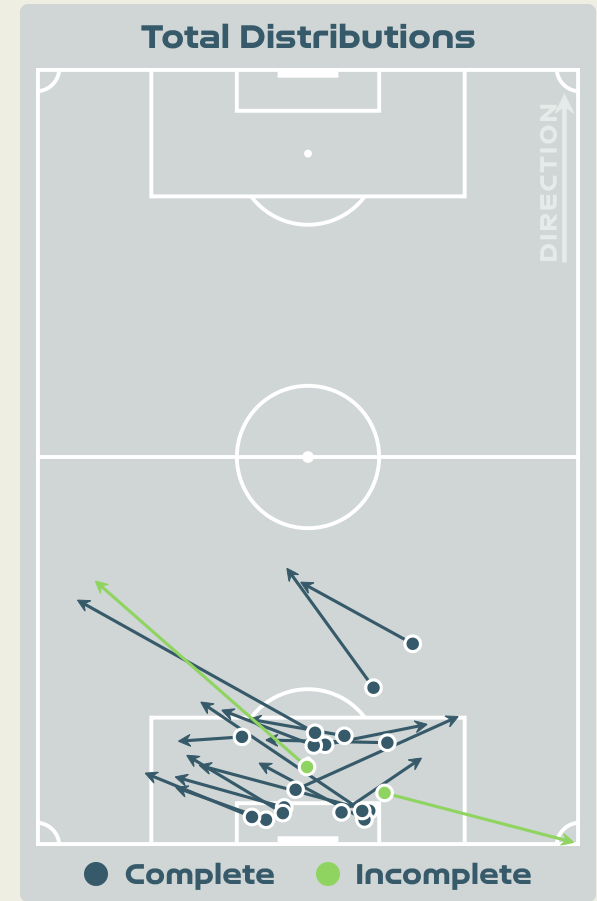
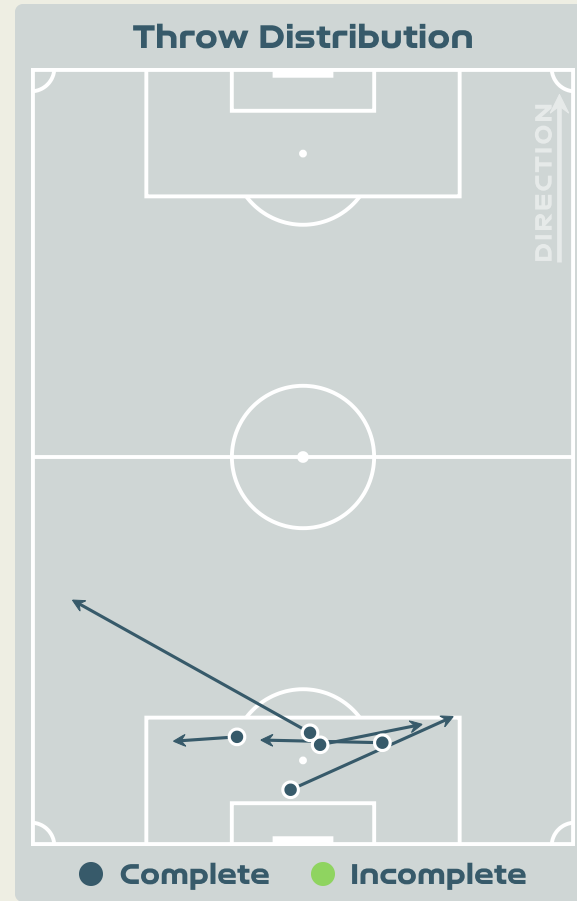
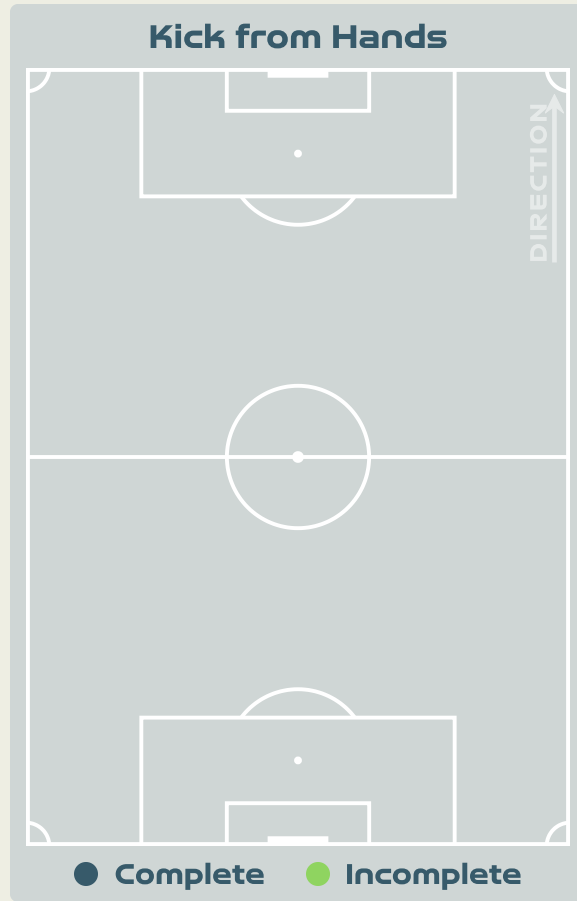
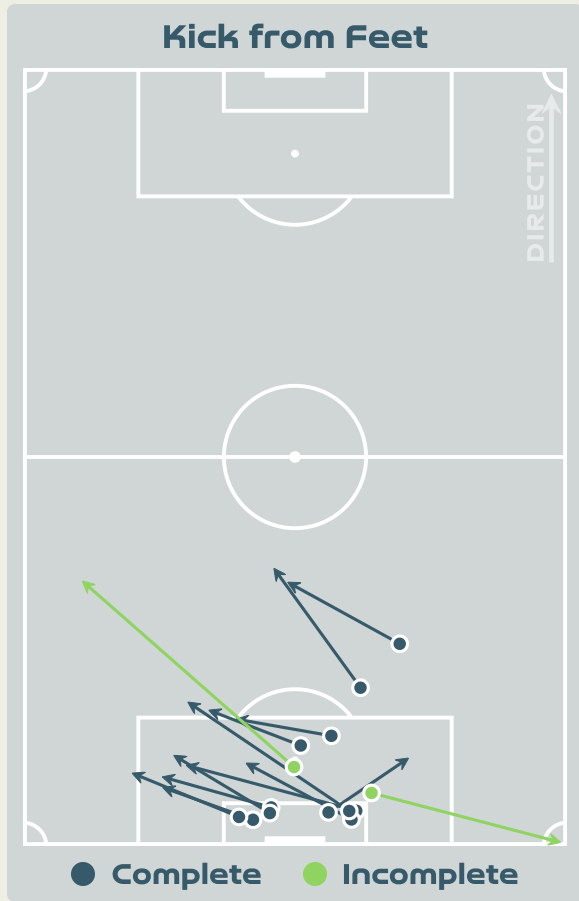
China PR





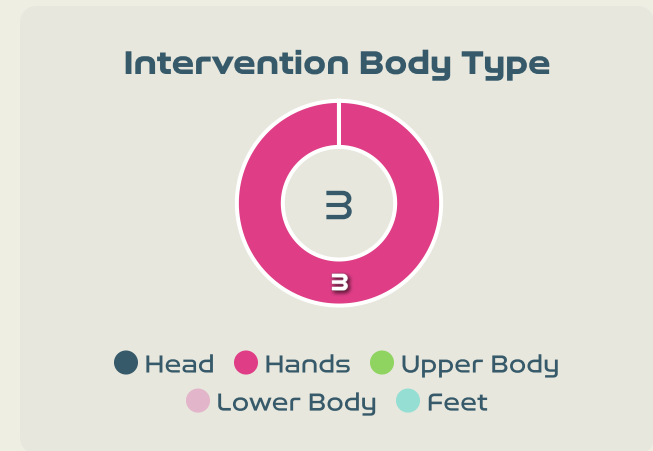
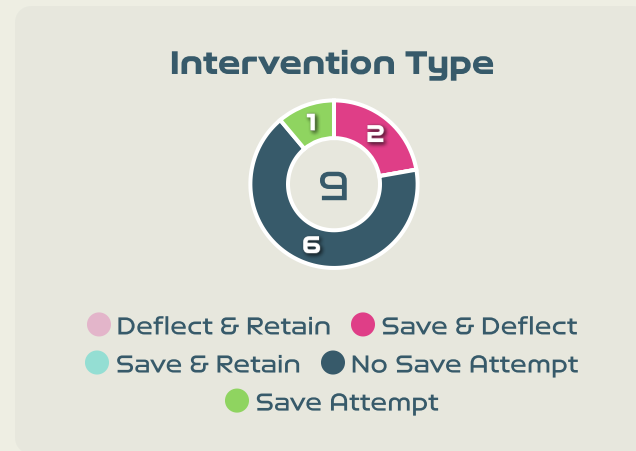
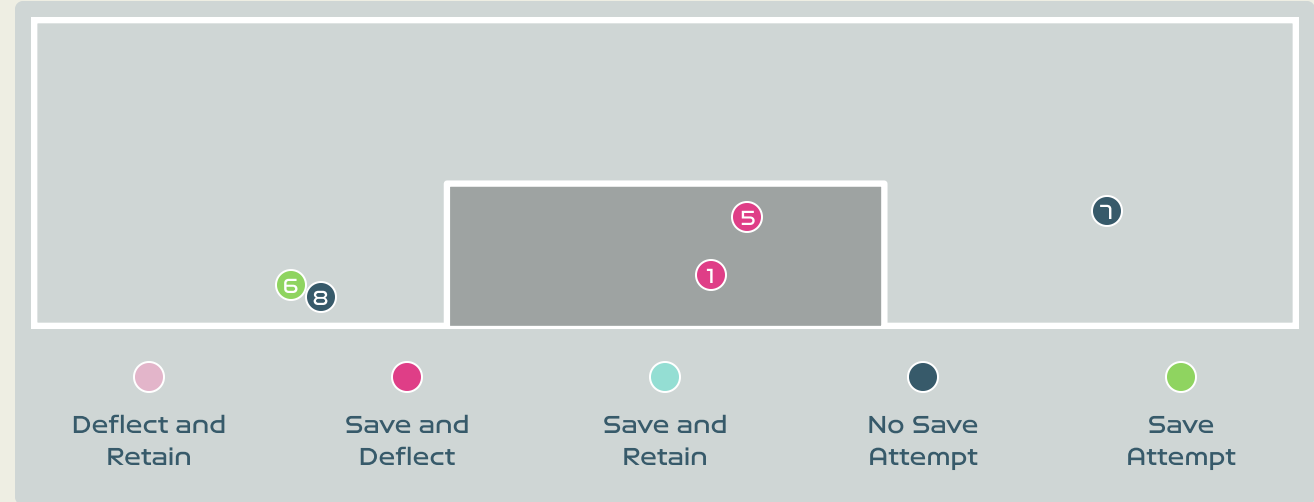
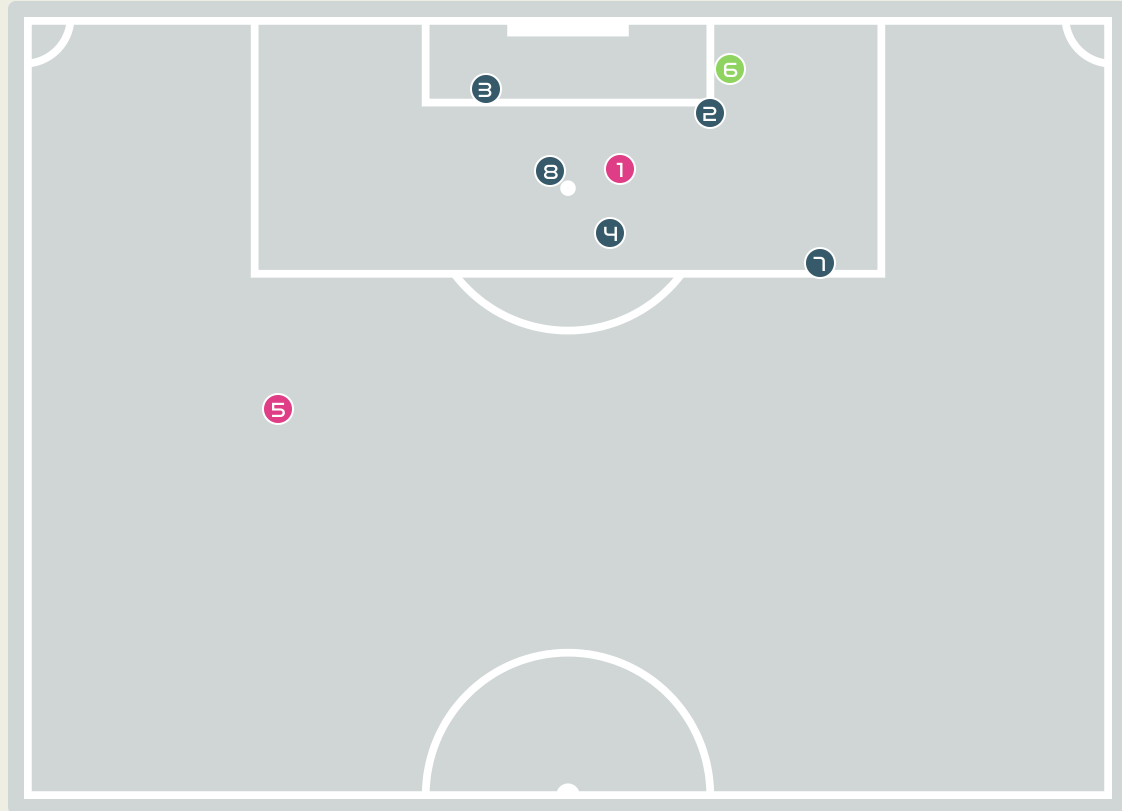


# Goalkeeping Distribution



# China PR

## Goal Prevention



**9**

Total Attempts on Goal Faced

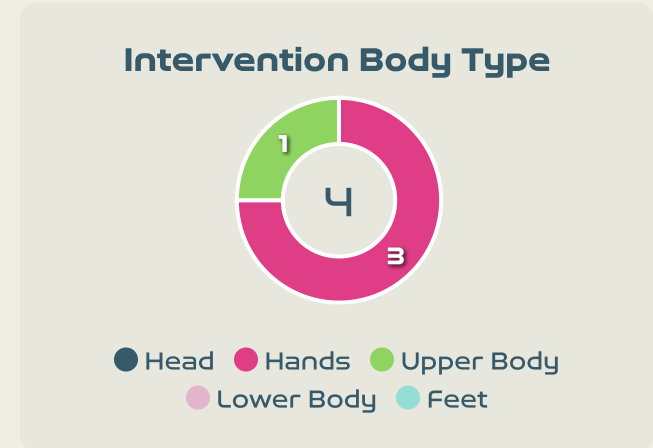
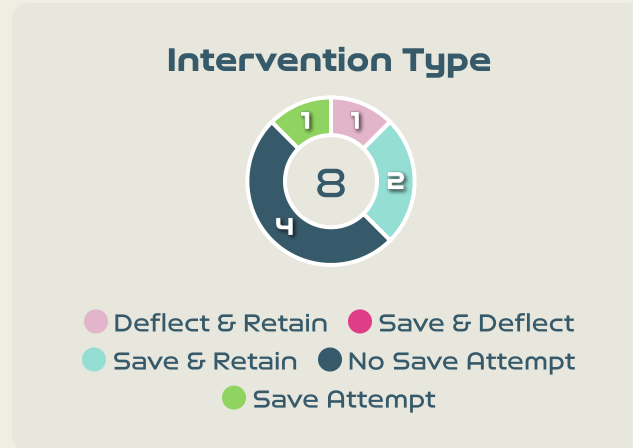
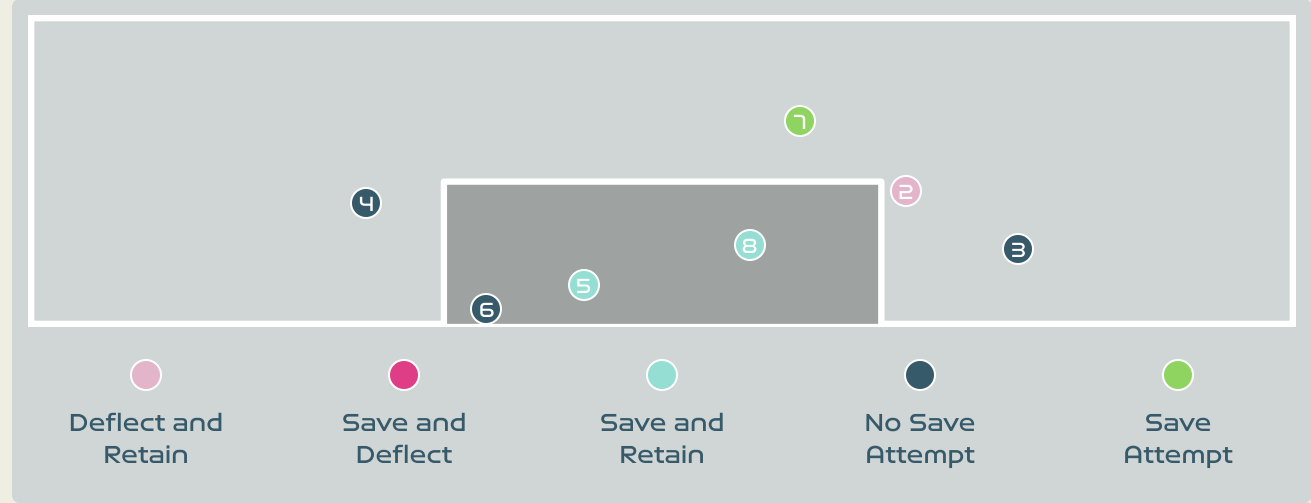
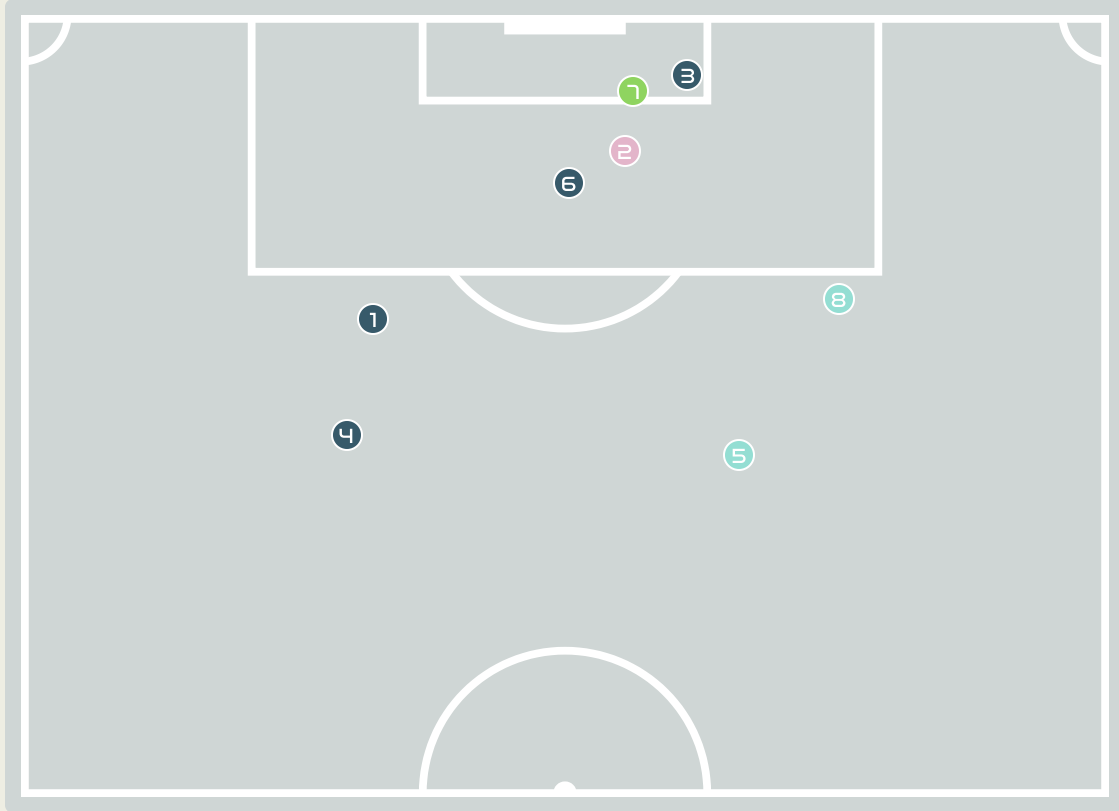
**100**

Save %

| Total Attempts on Goal Faced | Total Goal Interventions | Save & Retain | Deflect & Retain | Save & Deflect | Save Attempt | No Save Attempt |
|------------------------------|--------------------------|---------------|------------------|----------------|--------------|-----------------|
| 9                            | 2                        | 0             | 0                | 2              | 1            | 6               |

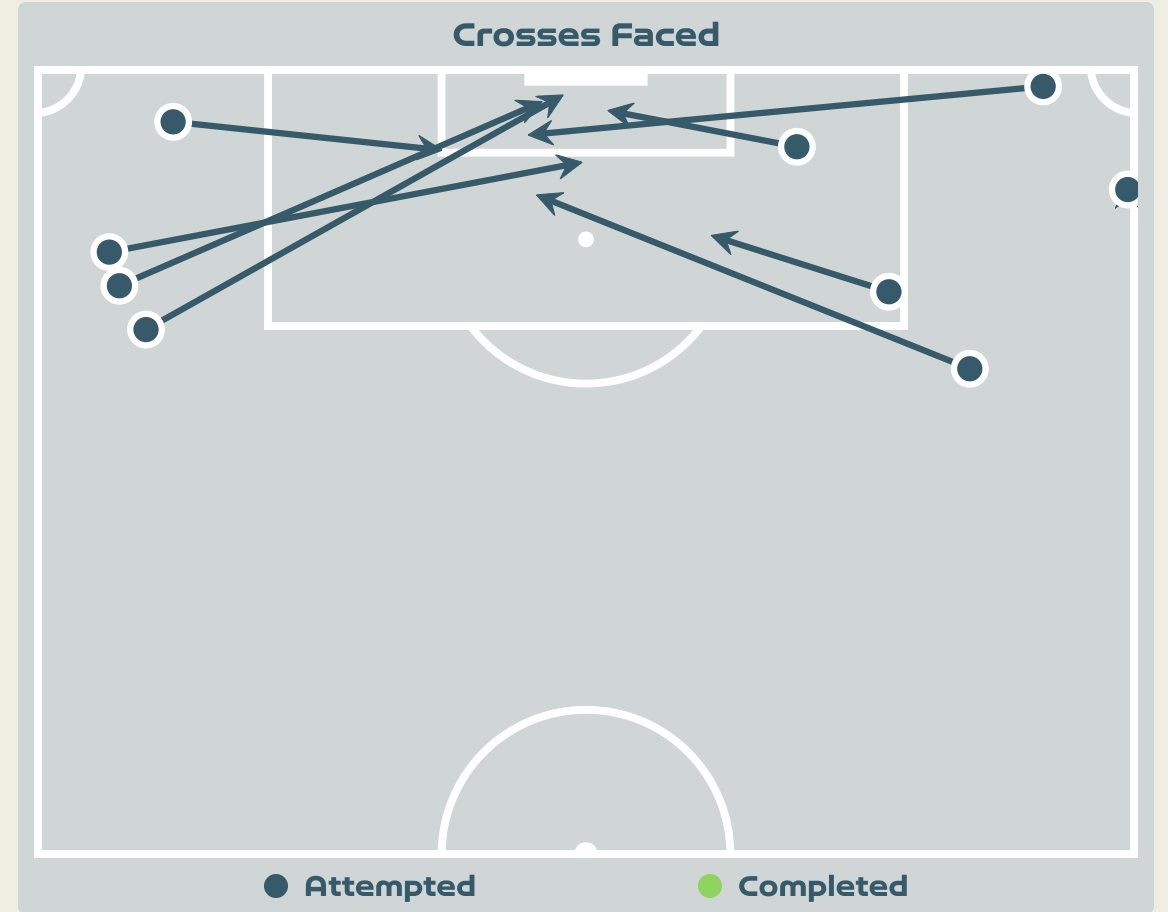
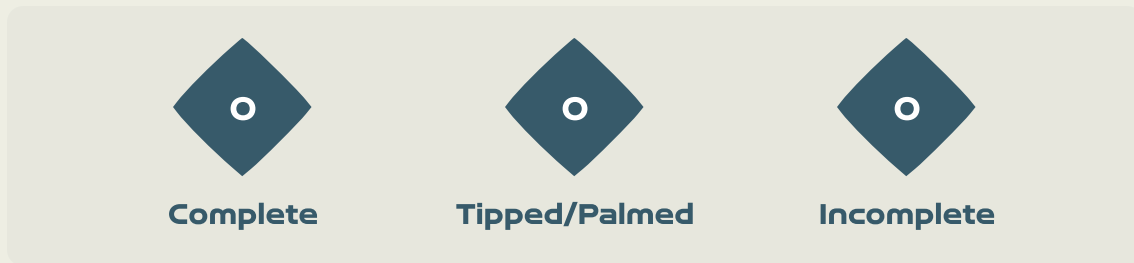
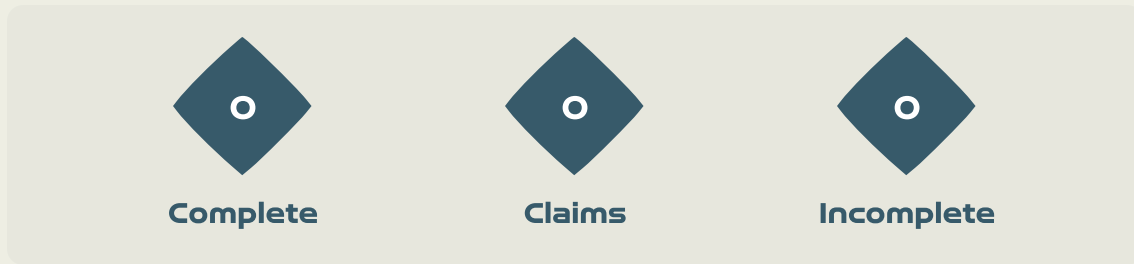


# Goal Prevention



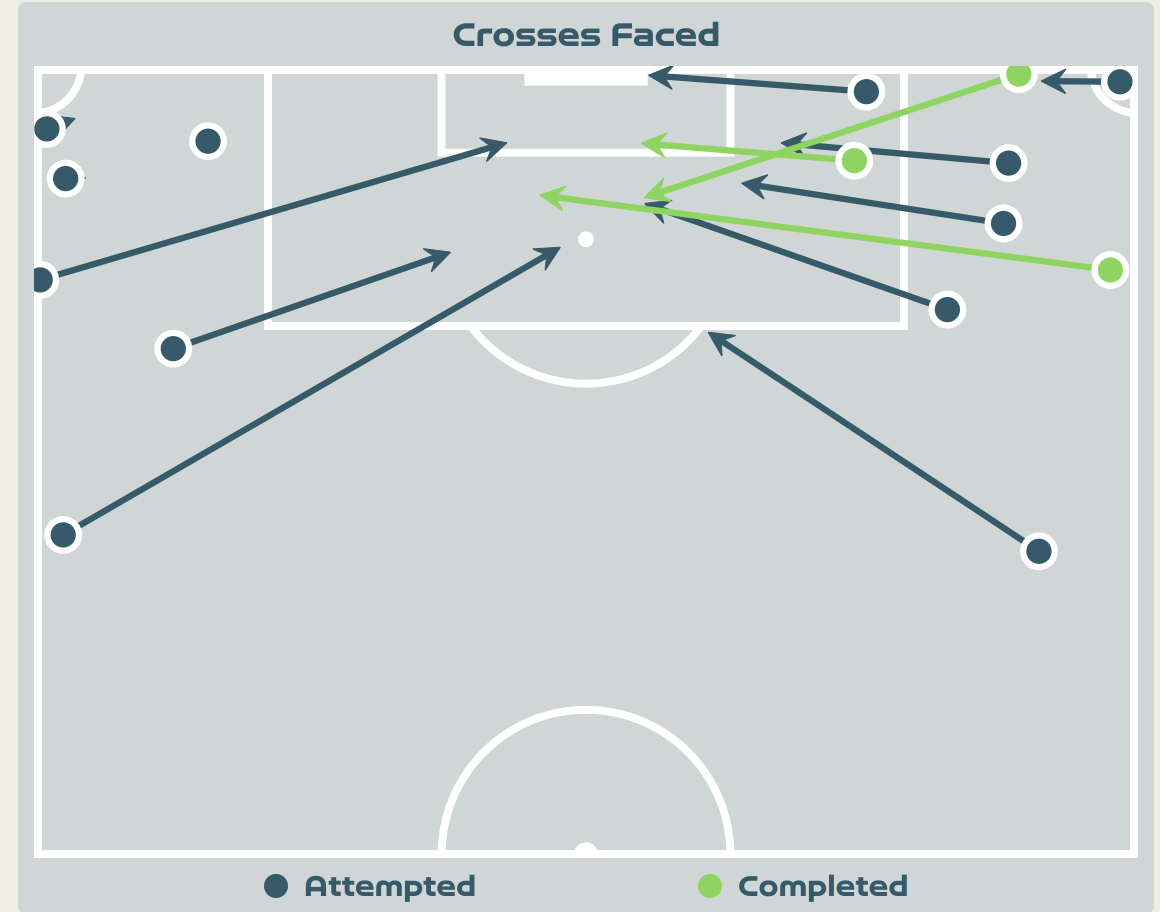
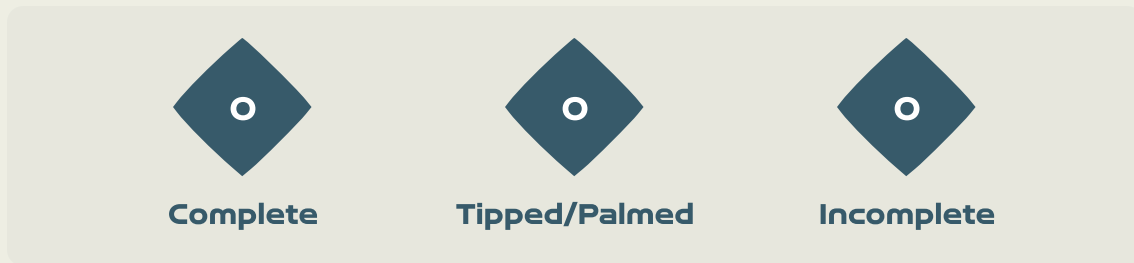
| Total Attempts on Goal Faced | Total Goal Interventions | Save & Retain | Deflect & Retain | Save & Deflect | Save Attempt | No Save Attempt |
|------------------------------|--------------------------|---------------|------------------|----------------|--------------|-----------------|
| 8                            | 2                        | 2             | 0                | 0              | 1            | 4               |

# Aerial Control



| Delivery Types Faced |          |           |        |        |         |      |
|----------------------|----------|-----------|--------|--------|---------|------|
| Total                | In Swing | Out Swing | Driven | Lofted | Cutback | Push |
| 15                   | 4        | 1         | 0      | 8      | 0       | 2    |

# Aerial Control



**Delivery Types Faced**

| Total | In Swing | Out Swing | Driven | Lofted | Cutback | Push |
|-------|----------|-----------|--------|--------|---------|------|
| 16    | 4        | 2         | 2      | 5      | 0       | 3    |



# SET PLAYS



China PR v Haiti



## Set Plays - Corners

43

Total Set Plays

10

Total Free Kicks

1

Total Penalties

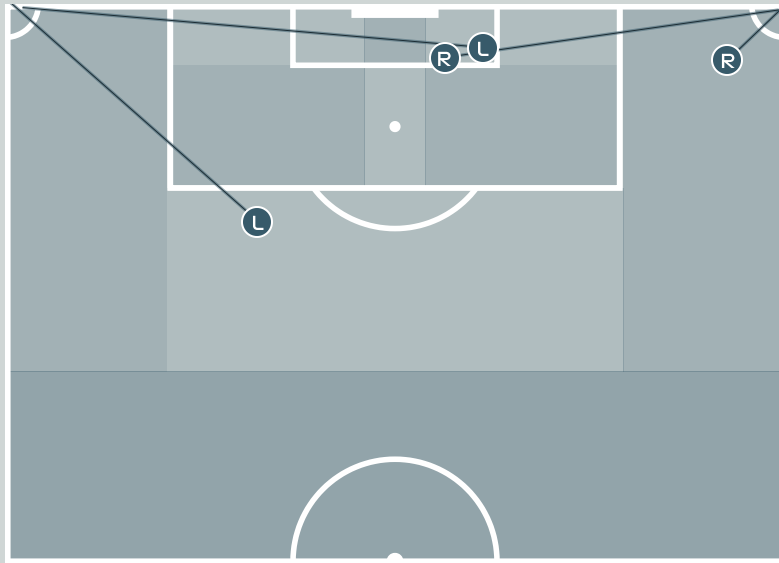
4

Total Corners

28

Total Throw Ins

### Corners - First Contact



● China PR

● Haiti

## China PR

| Delivery Type        | From Left Side | From Right Side | Total |
|----------------------|----------------|-----------------|-------|
| Direct to Area       | 1              | 0               | 1     |
| Short                | 1              | 2               | 3     |
| Edge of Penalty Area | 0              | 0               | 0     |

| Delivery Style | Total |
|----------------|-------|
| Inswing        | 1     |
| Outswing       | 0     |
| Driven         | 0     |

| Free Kicks          |       |
|---------------------|-------|
| Type                | Total |
| Direct              | 6     |
| Direct (on target)  | 0     |
| Direct (off target) | 1     |
| Indirect            | 4     |

### First Contacts on China PR Crosses

4

By China PR

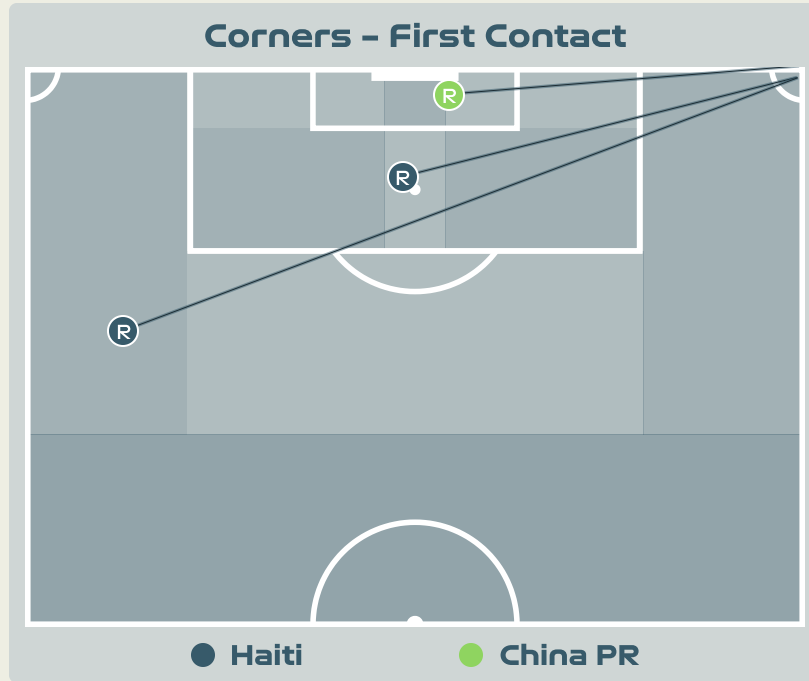
0

By Haiti

| Top 5 Player First Contacts |          |       |
|-----------------------------|----------|-------|
| Player                      | Team     | Total |
| YAO Wei                     | China PR | 1     |
| WANG Shanshan               | China PR | 1     |
| ZHANG Linyan                | China PR | 1     |
| WANG Shuang                 | China PR | 1     |



# Set Plays - Corners



| Delivery Type        | From Left Side | From Right Side | Total |
|----------------------|----------------|-----------------|-------|
| Direct to Area       | 1              | 3               | 4     |
| Short                | 0              | 0               | 0     |
| Edge of Penalty Area | 0              | 0               | 0     |

| Delivery Style | Total |
|----------------|-------|
| Inswing        | 2     |
| Outswing       | 0     |
| Driven         | 0     |

| Free Kicks          |       |
|---------------------|-------|
| Type                | Total |
| Direct              | 9     |
| Direct (on target)  | 1     |
| Direct (off target) | 0     |
| Indirect            | 1     |



| Top 5 Player First Contacts |          |       |
|-----------------------------|----------|-------|
| Player                      | Team     | Total |
| LOUIS Kethna                | Haiti    | 1     |
| ELOISSAINT Roseline         | Haiti    | 1     |
| ZHANG Xin                   | China PR | 1     |





# INDIVIDUAL DATA IN POSSESSION



China PR v Haiti



## In Possession - Distributions

China PR

| #  | Player        | Passes Attempted | Passes Completed | Pass Completion % | Switches of Play | Crosses Attempted | Crosses Completed | Line Breaks Attempted | Line Breaks Completed | Line Break Completion % | Ball Progressions | Take Ons | Step Ins | Attempts at Goal | Goals |
|----|---------------|------------------|------------------|-------------------|------------------|-------------------|-------------------|-----------------------|-----------------------|-------------------------|-------------------|----------|----------|------------------|-------|
| 1  | ZHU Yu        | 27               | 16               | 59%               | 0                | 0                 | 0                 | 13                    | 5                     | 38%                     | 0                 | 0        | 0        | 0                | 0     |
| 2  | LI Mengwen    | 36               | 29               | 81%               | 0                | 3                 | 1                 | 8                     | 6                     | 75%                     | 1                 | 1        | 0        | 0                | 0     |
| 8  | YAO Wei       | 53               | 46               | 87%               | 1                | 0                 | 0                 | 11                    | 7                     | 63%                     | 0                 | 0        | 0        | 1                | 0     |
| 10 | ZHANG Rui     | 9                | 7                | 78%               | 0                | 3                 | 1                 | 2                     | 1                     | 50%                     | 0                 | 0        | 0        | 1                | 0     |
| 11 | WANG Shanshan | 41               | 37               | 90%               | 0                | 1                 | 0                 | 16                    | 13                    | 81%                     | 0                 | 0        | 0        | 1                | 0     |
| 13 | YANG Lina     | 37               | 32               | 86%               | 0                | 0                 | 0                 | 13                    | 9                     | 69%                     | 4                 | 1        | 3        | 1                | 0     |
| 14 | LOU Jiahui    | 8                | 7                | 88%               | 0                | 2                 | 0                 | 2                     | 0                     | 0%                      | 1                 | 1        | 0        | 1                | 0     |
| 15 | CHEN Qiaozhu  | 49               | 39               | 80%               | 0                | 3                 | 0                 | 25                    | 17                    | 68%                     | 3                 | 1        | 2        | 0                | 0     |
| 16 | YAO Lingwei   | 38               | 34               | 89%               | 0                | 0                 | 0                 | 12                    | 11                    | 91%                     | 0                 | 0        | 0        | 0                | 0     |
| 17 | WU Chengshu   | 20               | 17               | 85%               | 0                | 0                 | 0                 | 6                     | 5                     | 83%                     | 3                 | 3        | 0        | 0                | 0     |
| 19 | ZHANG Linyan  | 38               | 32               | 84%               | 0                | 1                 | 0                 | 1                     | 0                     | 0%                      | 6                 | 4        | 2        | 2                | 0     |
| 3  | DOU Jiaxing   | 1                | 0                | 0%                | 0                | 0                 | 0                 | 1                     | 0                     | 0%                      | 0                 | 0        | 0        | 0                | 0     |
| 6  | ZHANG Xin     | 20               | 14               | 70%               | 0                | 3                 | 2                 | 6                     | 4                     | 66%                     | 3                 | 0        | 3        | 0                | 0     |
| 7  | WANG Shuang   | 24               | 22               | 92%               | 0                | 0                 | 0                 | 7                     | 6                     | 85%                     | 1                 | 1        | 0        | 1                | 1     |
| 18 | TANG Jiali    | 1                | 1                | 100%              | 0                | 0                 | 0                 | 0                     | 0                     | 0%                      | 0                 | 0        | 0        | 0                | 0     |

## In Possession – Offers &amp; Receptions

China PR

|    |               |              | Offer movement types |            |           |           |           |             |                 |
|----|---------------|--------------|----------------------|------------|-----------|-----------|-----------|-------------|-----------------|
| #  | Player        | Total Offers | In Front             | In Between | Out to In | In to Out | In Behind | No Movement | Offers Received |
| 1  | ZHU Yu        | 3            | 0                    | 0          | 0         | 0         | 0         | 3           | 1               |
| 2  | LI Mengwen    | 22           | 7                    | 0          | 0         | 0         | 4         | 11          | 12              |
| 8  | YAO Wei       | 29           | 2                    | 4          | 0         | 2         | 0         | 21          | 16              |
| 10 | ZHANG Rui     | 25           | 2                    | 16         | 0         | 1         | 3         | 3           | 4               |
| 11 | WANG Shanshan | 3            | 0                    | 0          | 0         | 0         | 1         | 2           | 1               |
| 13 | YANG Lina     | 34           | 21                   | 8          | 0         | 2         | 1         | 2           | 15              |
| 14 | LOU Jiahui    | 13           | 1                    | 3          | 0         | 0         | 9         | 0           | 5               |
| 15 | CHEN Qiaozhu  | 45           | 14                   | 0          | 1         | 1         | 5         | 24          | 18              |
| 16 | YAO Lingwei   | 28           | 12                   | 5          | 0         | 1         | 0         | 10          | 14              |
| 17 | WU Chengshu   | 14           | 4                    | 0          | 1         | 0         | 3         | 6           | 4               |
| 19 | ZHANG Linyan  | 89           | 4                    | 29         | 6         | 11        | 25        | 14          | 25              |
| 3  | DOU Jiaying   | 0            | 0                    | 0          | 0         | 0         | 0         | 0           | 0               |
| 6  | ZHANG Xin     | 11           | 2                    | 2          | 0         | 0         | 5         | 2           | 6               |
| 7  | WANG Shuang   | 17           | 0                    | 7          | 0         | 2         | 4         | 4           | 6               |
| 18 | TANG Jiali    | 12           | 0                    | 6          | 1         | 0         | 5         | 0           | 0               |

## In Possession - Distributions



| #  | Player              | Passes Attempted | Passes Completed | Pass Completion % | Switches of Play | Crosses Attempted | Crosses Completed | Line Breaks Attempted | Line Breaks Completed | Line Break Completion % | Ball Progressions | Take Ons | Step Ins | Attempts at Goal | Goals |
|----|---------------------|------------------|------------------|-------------------|------------------|-------------------|-------------------|-----------------------|-----------------------|-------------------------|-------------------|----------|----------|------------------|-------|
| 1  | THEUS Kerly         | 19               | 17               | 89%               | 0                | 0                 | 0                 | 0                     | 0                     | 0%                      | 0                 | 0        | 0        | 0                | 0     |
| 4  | JOSEPH Tabita       | 60               | 47               | 78%               | 0                | 0                 | 0                 | 10                    | 3                     | 30%                     | 3                 | 0        | 3        | 0                | 0     |
| 5  | MORYL Maudeline     | 11               | 8                | 73%               | 0                | 0                 | 0                 | 3                     | 2                     | 66%                     | 0                 | 0        | 0        | 0                | 0     |
| 7  | LOUIS Batcheba      | 9                | 6                | 67%               | 0                | 1                 | 0                 | 5                     | 3                     | 60%                     | 3                 | 3        | 0        | 1                | 0     |
| 9  | JEUDY Sherly        | 22               | 15               | 68%               | 0                | 4                 | 1                 | 9                     | 4                     | 44%                     | 1                 | 0        | 1        | 1                | 0     |
| 10 | MONDESIR Nerilia    | 15               | 9                | 60%               | 0                | 4                 | 2                 | 7                     | 1                     | 14%                     | 6                 | 5        | 1        | 3                | 0     |
| 13 | PETIT-FRERE Betina  | 53               | 41               | 77%               | 0                | 1                 | 0                 | 16                    | 10                    | 62%                     | 1                 | 1        | 0        | 0                | 0     |
| 19 | PIERRE-LOUIS Dayana | 28               | 25               | 89%               | 1                | 0                 | 0                 | 5                     | 4                     | 80%                     | 2                 | 2        | 0        | 0                | 0     |
| 20 | LOUIS Kethna        | 64               | 47               | 73%               | 0                | 1                 | 0                 | 23                    | 12                    | 52%                     | 1                 | 0        | 1        | 1                | 0     |
| 21 | MATHURIN Ruthny     | 48               | 39               | 81%               | 0                | 1                 | 0                 | 21                    | 16                    | 76%                     | 0                 | 0        | 0        | 0                | 0     |
| 22 | BORGELLA Roselord   | 16               | 9                | 56%               | 0                | 3                 | 0                 | 4                     | 0                     | 0%                      | 1                 | 1        | 0        | 0                | 0     |
| 2  | SURPRIS Chelsea     | 13               | 9                | 69%               | 0                | 0                 | 0                 | 5                     | 1                     | 20%                     | 0                 | 0        | 0        | 0                | 0     |
| 6  | DUMORNAY Melchie    | 21               | 11               | 52%               | 0                | 0                 | 0                 | 2                     | 1                     | 50%                     | 1                 | 0        | 1        | 2                | 0     |
| 8  | ETIENNE Danielle    | 10               | 7                | 70%               | 0                | 0                 | 0                 | 1                     | 0                     | 0%                      | 0                 | 0        | 0        | 0                | 0     |
| 11 | ELOISSAINT Roseline | 10               | 7                | 70%               | 0                | 0                 | 0                 | 5                     | 3                     | 60%                     | 0                 | 0        | 0        | 0                | 0     |
| 17 | JOSEPH Shwendesky   | 2                | 2                | 100%              | 0                | 0                 | 0                 | 1                     | 1                     | 100%                    | 0                 | 0        | 0        | 0                | 0     |



# In Possession – Offers & Receptions

|    |                     |              | Offer movement types |            |           |           |           |             |                 |
|----|---------------------|--------------|----------------------|------------|-----------|-----------|-----------|-------------|-----------------|
| #  | Player              | Total Offers | In Front             | In Between | Out to In | In to Out | In Behind | No Movement | Offers Received |
| 1  | THEUS Kerly         | 0            | 0                    | 0          | 0         | 0         | 0         | 0           | 0               |
| 4  | JOSEPH Tabita       | 1            | 0                    | 0          | 0         | 0         | 0         | 1           | 1               |
| 5  | MORYL Maudeline     | 13           | 4                    | 1          | 0         | 0         | 0         | 8           | 2               |
| 7  | LOUIS Batcheba      | 24           | 1                    | 3          | 1         | 3         | 7         | 9           | 5               |
| 9  | JEUDY Sherly        | 61           | 15                   | 17         | 0         | 2         | 18        | 9           | 10              |
| 10 | MONDESIR Nerilia    | 44           | 9                    | 2          | 1         | 4         | 17        | 11          | 16              |
| 13 | PETIT-FRERE Betina  | 30           | 10                   | 0          | 0         | 0         | 1         | 19          | 12              |
| 19 | PIERRE-LOUIS Dayana | 15           | 6                    | 4          | 0         | 0         | 0         | 5           | 3               |
| 20 | LOUIS Kethna        | 4            | 0                    | 0          | 0         | 0         | 2         | 2           | 1               |
| 21 | MATHURIN Ruthny     | 30           | 8                    | 0          | 0         | 0         | 2         | 20          | 6               |
| 22 | BORGELLA Roselord   | 54           | 6                    | 13         | 4         | 3         | 21        | 7           | 10              |
| 2  | SURPRIS Chelsea     | 9            | 3                    | 0          | 0         | 0         | 0         | 6           | 4               |
| 6  | DUMORNAY Melchie    | 38           | 12                   | 8          | 1         | 0         | 6         | 11          | 19              |
| 8  | ETIENNE Danielle    | 7            | 4                    | 1          | 0         | 0         | 0         | 2           | 2               |
| 11 | ELOISSAINT Roseline | 16           | 1                    | 1          | 3         | 1         | 7         | 3           | 2               |
| 17 | JOSEPH Shwendesky   | 7            | 0                    | 1          | 0         | 0         | 5         | 1           | 0               |



# INDIVIDUAL DATA OUT OF POSSESSION



China PR v Haiti



## Out of Possession

China PR

| #  | Player        | Tackles Made / Won | Blocks | Interceptions | Pressing Direct | Pressing Indirect | Duels Won - Aerial | Duels Won - Physical | Possession Contests won | Clearances | Loose Ball Receptions | Pushing On | Pushing On into Pressing | Possession Regains | Possession Interrupted |
|----|---------------|--------------------|--------|---------------|-----------------|-------------------|--------------------|----------------------|-------------------------|------------|-----------------------|------------|--------------------------|--------------------|------------------------|
| 1  | ZHU Yu        | 0 / 0              | 0      | 0             | 0               | 0                 | 0                  | 0                    | 0                       | 1          | 2                     | 0          | 0                        | 5                  | 0                      |
| 2  | LI Mengwen    | 6 / 2              | 3      | 0             | 9               | 6                 | 3                  | 0                    | 4                       | 7          | 4                     | 31         | 10                       | 9                  | 3                      |
| 8  | YAO Wei       | 1 / 0              | 1      | 0             | 3               | 7                 | 4                  | 0                    | 4                       | 13         | 7                     | 8          | 2                        | 9                  | 7                      |
| 10 | ZHANG Rui     | 8 / 0              | 0      | 0             | 7               | 4                 | 2                  | 0                    | 2                       | 0          | 2                     | 4          | 2                        | 0                  | 3                      |
| 11 | WANG Shanshan | 3 / 1              | 3      | 3             | 5               | 6                 | 2                  | 0                    | 2                       | 10         | 8                     | 4          | 3                        | 9                  | 7                      |
| 13 | YANG Lina     | 1 / 1              | 2      | 1             | 2               | 5                 | 3                  | 0                    | 4                       | 7          | 8                     | 5          | 0                        | 4                  | 5                      |
| 14 | LOU Jiahui    | 2 / 1              | 1      | 0             | 3               | 4                 | 1                  | 0                    | 1                       | 0          | 1                     | 9          | 2                        | 2                  | 0                      |
| 15 | CHEN Qiaozhu  | 8 / 2              | 4      | 2             | 5               | 12                | 1                  | 0                    | 2                       | 11         | 5                     | 36         | 9                        | 13                 | 6                      |
| 16 | YAO Lingwei   | 3 / 1              | 0      | 0             | 4               | 7                 | 0                  | 0                    | 1                       | 4          | 5                     | 5          | 3                        | 2                  | 2                      |
| 17 | WU Chengshu   | 4 / 0              | 0      | 0             | 3               | 13                | 0                  | 0                    | 0                       | 1          | 6                     | 6          | 4                        | 0                  | 2                      |
| 19 | ZHANG Linyan  | 4 / 1              | 1      | 1             | 8               | 34                | 0                  | 0                    | 1                       | 1          | 10                    | 25         | 14                       | 3                  | 4                      |
| 3  | DOU Jiaxing   | 0 / 0              | 2      | 0             | 1               | 2                 | 0                  | 1                    | 1                       | 2          | 0                     | 1          | 0                        | 0                  | 2                      |
| 6  | ZHANG Xin     | 3 / 0              | 3      | 0             | 5               | 10                | 0                  | 0                    | 0                       | 1          | 6                     | 15         | 7                        | 0                  | 4                      |
| 7  | WANG Shuang   | 1 / 1              | 0      | 0             | 2               | 14                | 2                  | 0                    | 2                       | 0          | 4                     | 9          | 6                        | 1                  | 0                      |
| 18 | TANG Jiali    | 1 / 0              | 1      | 0             | 0               | 10                | 0                  | 0                    | 0                       | 0          | 1                     | 6          | 5                        | 0                  | 1                      |

## Out of Possession

Haiti



| #  | Player              | Tackles Made / Won | Blocks | Interceptions | Pressing Direct | Pressing Indirect | Duels Won - Aerial | Duels Won - Physical | Possession Contests won | Clearances | Loose Ball Receptions | Pushing On | Pushing On into Pressing | Possession Regains | Possession Interrupted |
|----|---------------------|--------------------|--------|---------------|-----------------|-------------------|--------------------|----------------------|-------------------------|------------|-----------------------|------------|--------------------------|--------------------|------------------------|
| 1  | THEUS Kerly         | 0 / 0              | 0      | 0             | 0               | 0                 | 0                  | 0                    | 0                       | 0          | 3                     | 0          | 0                        | 6                  | 0                      |
| 4  | JOSEPH Tabita       | 8 / 1              | 1      | 1             | 7               | 6                 | 0                  | 1                    | 1                       | 8          | 8                     | 5          | 2                        | 4                  | 7                      |
| 5  | MORYL Maudeline     | 3 / 0              | 0      | 1             | 3               | 6                 | 0                  | 0                    | 0                       | 4          | 6                     | 23         | 5                        | 3                  | 3                      |
| 7  | LOUIS Batcheba      | 5 / 2              | 2      | 0             | 10              | 22                | 5                  | 0                    | 6                       | 0          | 5                     | 18         | 11                       | 2                  | 1                      |
| 9  | JEUDY Sherly        | 8 / 2              | 2      | 0             | 9               | 38                | 1                  | 0                    | 2                       | 2          | 5                     | 42         | 16                       | 3                  | 5                      |
| 10 | MONDESIR Nerilia    | 4 / 0              | 0      | 0             | 7               | 15                | 0                  | 0                    | 0                       | 0          | 5                     | 16         | 11                       | 1                  | 1                      |
| 13 | PETIT-FRERE Betina  | 0 / 0              | 3      | 3             | 7               | 12                | 1                  | 0                    | 2                       | 2          | 2                     | 32         | 10                       | 6                  | 0                      |
| 19 | PIERRE-LOUIS Dayana | 5 / 1              | 0      | 1             | 5               | 13                | 1                  | 0                    | 2                       | 0          | 13                    | 13         | 6                        | 3                  | 2                      |
| 20 | LOUIS Kethna        | 9 / 4              | 2      | 1             | 7               | 7                 | 3                  | 0                    | 3                       | 12         | 5                     | 8          | 3                        | 9                  | 11                     |
| 21 | MATHURIN Ruthny     | 6 / 1              | 2      | 0             | 6               | 14                | 0                  | 0                    | 0                       | 1          | 1                     | 16         | 9                        | 2                  | 3                      |
| 22 | BORGELLA Roselord   | 2 / 1              | 0      | 1             | 2               | 15                | 2                  | 0                    | 2                       | 0          | 3                     | 24         | 7                        | 2                  | 1                      |
| 2  | SURPRIS Chelsea     | 0 / 0              | 0      | 0             | 0               | 2                 | 0                  | 0                    | 0                       | 2          | 0                     | 1          | 0                        | 1                  | 1                      |
| 6  | DUMORNAY Melchie    | 1 / 0              | 2      | 0             | 6               | 11                | 2                  | 0                    | 2                       | 0          | 4                     | 14         | 5                        | 2                  | 0                      |
| 8  | ETIENNE Danielle    | 0 / 0              | 0      | 1             | 1               | 3                 | 0                  | 0                    | 0                       | 1          | 4                     | 2          | 0                        | 1                  | 1                      |
| 11 | ELOISSAINT Roseline | 1 / 0              | 0      | 0             | 1               | 6                 | 0                  | 0                    | 0                       | 0          | 2                     | 7          | 4                        | 0                  | 0                      |
| 17 | JOSEPH Shwendesky   | 0 / 0              | 0      | 0             | 0               | 2                 | 0                  | 0                    | 0                       | 0          | 2                     | 3          | 2                        | 0                  | 0                      |





# INDIVIDUAL DATA PHYSICAL



China PR v Haiti



## Physical Data

China PR

| #  | Player        | Total Distance (m) | Zone 1: 0-7 km/h (m) | Zone 2: 7-13km/h (m) | Zone 3: 13-19km/h (m) | Zone 4: 19-23km/h (m) | Zone 5: 23+ km/h (m) | High Speed Runs (Zone 4) | Sprints (Zone 5) | Top Speed (km/h) |
|----|---------------|--------------------|----------------------|----------------------|-----------------------|-----------------------|----------------------|--------------------------|------------------|------------------|
| 1  | ZHU Yu        | 3844.0             | 3130.9               | 466.7                | 226.4                 | 20.0                  | 0                    | 20.0                     | 1.0              | 24.3             |
| 2  | LI Mengwen    | 10074.0            | 3657.9               | 3927.8               | 1955.4                | 330.4                 | 202.5                | 155.0                    | 28.0             | 30.9             |
| 8  | YAO Wei       | 10112.4            | 3734.5               | 4161.2               | 1752.5                | 325.6                 | 138.5                | 149.0                    | 24.0             | 27.3             |
| 10 | ZHANG Rui     | 3334.4             | 1038.3               | 1049.0               | 977.6                 | 246.7                 | 23.0                 | 77.0                     | 20.0             | 26.0             |
| 11 | WANG Shanshan | 9060.7             | 3875.3               | 3371.5               | 1548.5                | 168.5                 | 97.9                 | 133.0                    | 18.0             | 28.1             |
| 13 | YANG Lina     | 11068.5            | 3748.9               | 4532.6               | 2396.3                | 390.7                 | 0                    | 175.0                    | 25.0             | 24.0             |
| 14 | LOU Jiahui    | 3951.8             | 1350.7               | 1397.8               | 865.1                 | 137.9                 | 200.0                | 78.0                     | 25.0             | 30.0             |
| 15 | CHEN Qiaozhu  | 11237.7            | 3562.4               | 4461.4               | 2601.5                | 511.3                 | 101.1                | 219.0                    | 43.0             | 27.4             |
| 16 | YAO Lingwei   | 8758.0             | 2993.5               | 3192.3               | 2288.5                | 251.4                 | 32.4                 | 163.0                    | 19.0             | 26.5             |
| 17 | WU Chengshu   | 5370.2             | 1731.9               | 1920.9               | 1493.4                | 180.4                 | 44.0                 | 111.0                    | 16.0             | 28.5             |
| 19 | ZHANG Linyan  | 9755.7             | 3539.4               | 3351.1               | 2078.0                | 655.6                 | 131.7                | 165.0                    | 47.0             | 28.8             |
| 3  | DOU Jiaxing   | 1832.0             | 737.0                | 653.8                | 309.2                 | 85.0                  | 46.9                 | 31.0                     | 9.0              | 27.2             |
| 6  | ZHANG Xin     | 7876.4             | 2176.3               | 2974.9               | 2014.0                | 560.8                 | 150.4                | 152.0                    | 39.0             | 28.0             |
| 7  | WANG Shuang   | 5955.8             | 2245.9               | 2081.0               | 1292.4                | 250.1                 | 86.4                 | 91.0                     | 20.0             | 27.6             |
| 18 | TANG Jiali    | 1710.1             | 481.2                | 650.4                | 413.5                 | 126.2                 | 38.6                 | 26.0                     | 11.0             | 27.2             |

## Physical Data

Haiti



| #  | Player              | Total Distance (m) | Zone 1: 0-7 km/h (m) | Zone 2: 7-13km/h (m) | Zone 3: 13-19km/h (m) | Zone 4: 19-23km/h (m) | Zone 5: 23+ km/h (m) | High Speed Runs (Zone 4) | Sprints (Zone 5) | Top Speed (km/h) |
|----|---------------------|--------------------|----------------------|----------------------|-----------------------|-----------------------|----------------------|--------------------------|------------------|------------------|
| 1  | THEUS Kerly         | 4286.7             | 3266.5               | 756.6                | 253.3                 | 9.9                   | 0                    | 24.0                     | 1.0              | 20.5             |
| 4  | JOSEPH Tabita       | 8124.3             | 4158.0               | 2481.2               | 1093.5                | 215.3                 | 176.3                | 106.0                    | 25.0             | 29.6             |
| 5  | MORYL Maudeline     | 4832.2             | 1777.8               | 1624.1               | 1199.8                | 213.6                 | 16.9                 | 102.0                    | 18.0             | 24.9             |
| 7  | LOUIS Batcheba      | 7226.1             | 2191.0               | 3227.2               | 1566.6                | 185.7                 | 55.6                 | 114.0                    | 17.0             | 28.8             |
| 9  | JEUDY Sherly        | 10108.1            | 3262.9               | 3515.6               | 2838.3                | 431.6                 | 60.6                 | 219.0                    | 38.0             | 26.4             |
| 10 | MONDESIR Nerilia    | 8422.0             | 4052.7               | 2317.7               | 1456.2                | 383.2                 | 212.2                | 152.0                    | 44.0             | 27.7             |
| 13 | PETIT-FRERE Betina  | 9606.7             | 3568.9               | 3771.6               | 1695.6                | 395.8                 | 175.8                | 152.0                    | 34.0             | 28.5             |
| 19 | PIERRE-LOUIS Dayana | 7933.5             | 2833.8               | 3052.0               | 1908.0                | 123.0                 | 16.7                 | 156.0                    | 12.0             | 25.5             |
| 20 | LOUIS Kethna        | 8980.4             | 4098.7               | 2950.1               | 1471.0                | 301.7                 | 159.0                | 130.0                    | 28.0             | 29.7             |
| 21 | MATHURIN Ruthny     | 7454.4             | 2917.6               | 2706.7               | 1493.1                | 268.4                 | 68.6                 | 125.0                    | 24.0             | 27.3             |
| 22 | BORGELLA Roselord   | 10058.5            | 4093.8               | 3793.1               | 1630.5                | 365.1                 | 176.0                | 149.0                    | 45.0             | 29.3             |
| 2  | SURPRIS Chelsea     | 2101.4             | 728.4                | 719.1                | 518.6                 | 120.8                 | 14.7                 | 38.0                     | 8.0              | 26.1             |
| 6  | DUMORNAY Melchie    | 5750.9             | 2073.2               | 1876.5               | 1253.7                | 311.7                 | 235.8                | 111.0                    | 29.0             | 30.8             |
| 8  | ETIENNE Danielle    | 2096.0             | 698.4                | 990.2                | 342.3                 | 65.0                  | 0                    | 32.0                     | 7.0              | 23.1             |
| 11 | ELOISSAINT Roseline | 3569.8             | 1365.8               | 972.4                | 876.0                 | 256.0                 | 99.2                 | 63.0                     | 20.0             | 27.5             |
| 17 | JOSEPH Shwendesky   | 1197.1             | 368.6                | 431.0                | 196.6                 | 146.8                 | 54.1                 | 21.0                     | 11.0             | 25.8             |

