



# USA 1 - 1 Netherlands

Group E - Match 23

27 July 2023

13:00 Kick Off

Sky Stadium

**POST MATCH SUMMARY REPORT**

# Match Summary - Teams

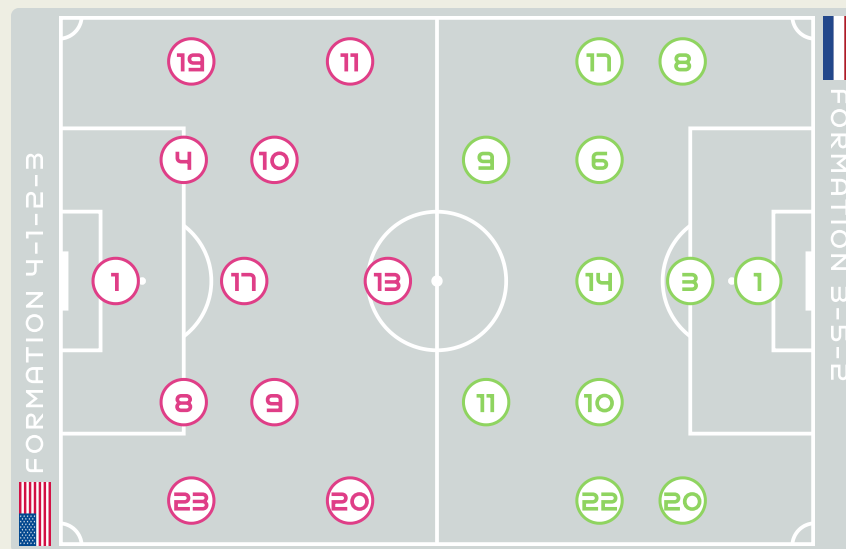


## STARTING

1	GK	NAEHER Alyssa	
4	DF	GIRMA Naomi	
8	MF	ERTZ Julie	
9	MF	DEMELO Savannah	↓ 46'
10	MF	HORAN Lindsey (C)	⚽ 62'
11	FW	SMITH Sophia	
13	FW	MORGAN Alex	
17	MF	SULLIVAN Andi	
19	DF	DUNN Crystal	
20	FW	RODMAN Trinity	
23	DF	FOX Emily	

## SUBSTITUTES

18	GK	MURPHY Casey	
21	GK	KINGSBURY Aubrey	
2	MF	SANCHEZ Ashley	
3	DF	HUERTA Sofia	
5	DF	OHARA Kelley	
6	FW	WILLIAMS Lynn	
7	FW	THOMPSON Alyssa	
12	DF	COOK Alana	
14	DF	SONNETT Emily	
15	FW	RAPINOE Megan	
16	MF	LAVELLE Rose	↑ 46'
22	MF	MEWIS Kristie	⚪ 51'



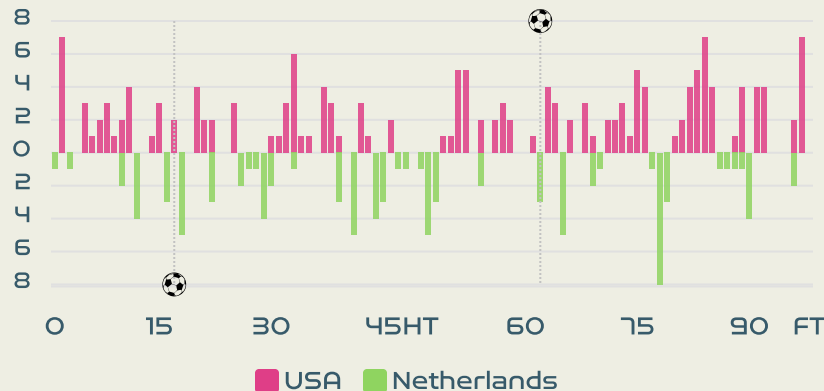
## STARTING

		VAN DOMSELAAR Daphne	GK	1	
↓ 46'		VAN DER GRAGT Stefanie	DF	3	
↓ 90+4'	⚽ 17'	ROORD Jill	MF	6	
		(C) SPITSE Sherida	MF	8	
↓ 71'		SNOEIJES Katja	FW	9	
		VAN DE DONK Danielle	MF	10	
		MARTENS Lieke	FW	11	
		GROENEN Jackie	MF	14	
↓ 86'		PELOVA Victoria	MF	17	
		JANSSEN Dominique	DF	20	
		BRUGTS Esmee	FW	22	

## SUBSTITUTES

		KOP Lize	GK	16	
		WEIMAR Jacintha	GK	23	
		WILMS Lynn	DF	2	
↑ 46'		NOUWEN Aniek	DF	4	
		VAN DONGEN Merel	DF	5	
		BEERENSTEYN Lineth	FW	7	
		BAIJINGS Jill	MF	12	
↑ 90+4'		JANSEN Renate	FW	13	
		DIJKSTRA Caitlin	DF	15	
↑ 86'		CASPARIJ Kerstin	DF	18	
		KAPTEIN Wieke	MF	19	
↑ 71'		EGURROLA Damaris	MF	21	

## Distribution in the Final Third



# Match Summary - Key Statistics



## Possession

Total	38.4%	15.1%	46.5%	Total
1	Goals			1
18 (3)	Attempts at Goal (On Target)			4 (1)
365 (260)	Total Passes (Complete)			486 (388)
71 %	Pass Completion %			80 %
103	Completed Line Breaks			83
14	Defensive Line Breaks			2
140	Receptions in the Final Third			61
29	Crosses			9
20	Ball Progressions			22
267 (75)	Defensive Pressures Applied (Direct Pressures)			264 (69)
76	Forced Turnovers			95
119	Second Balls			98
111.1 km	Total Distance Covered			109.1 km
5.1 km	Zone 4 - Low Speed Sprinting: 19-23km/h			5.3 km



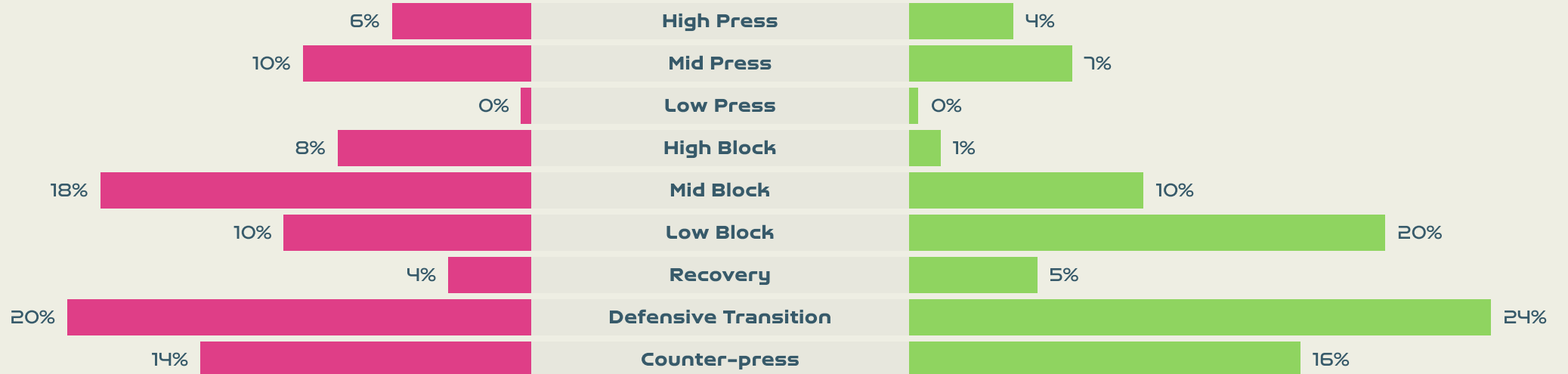
# Phases of Play



## IN POSSESSION



## OUT OF POSSESSION





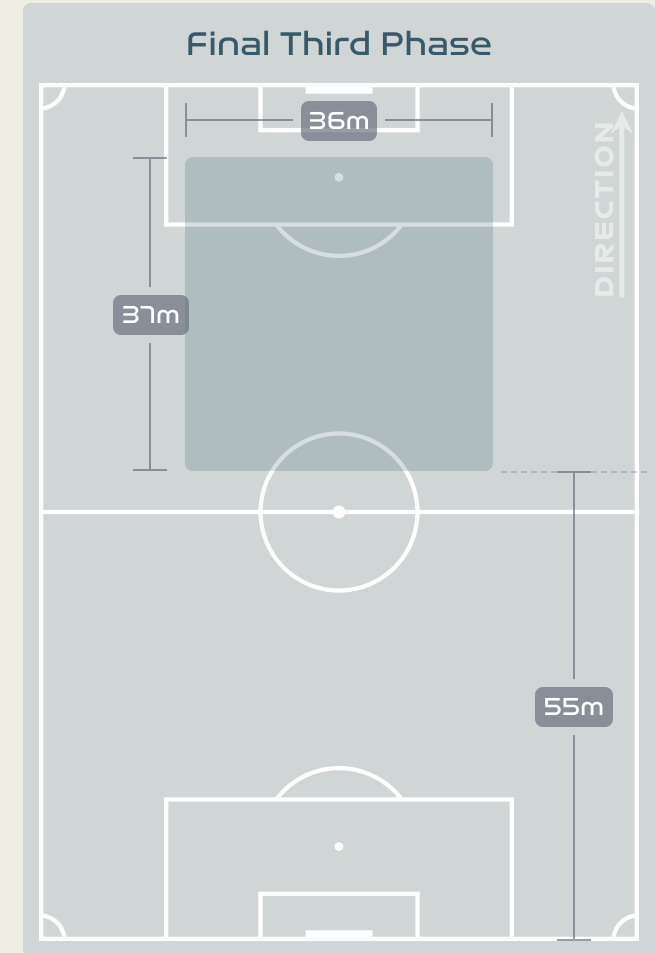
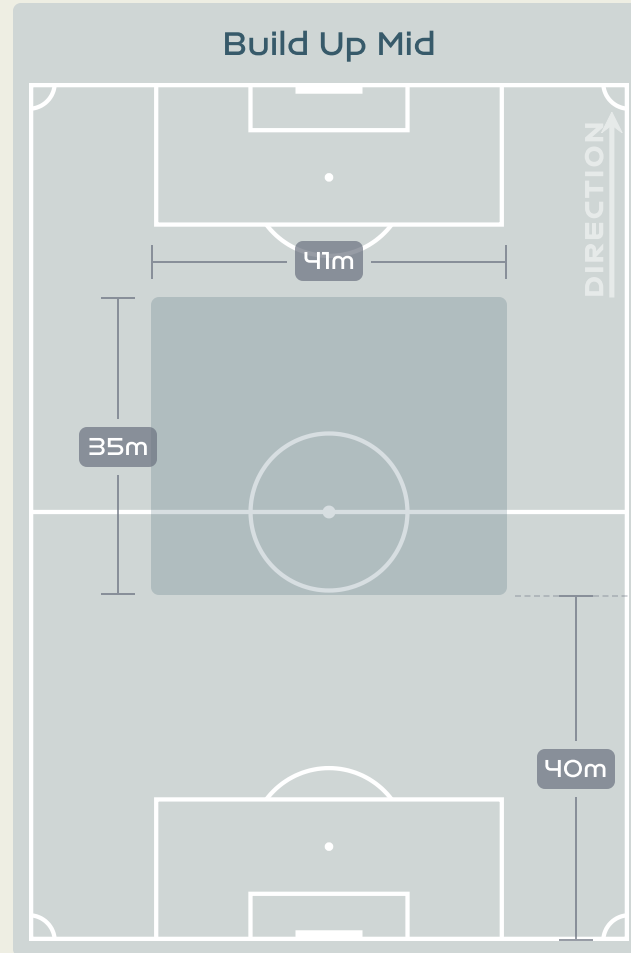
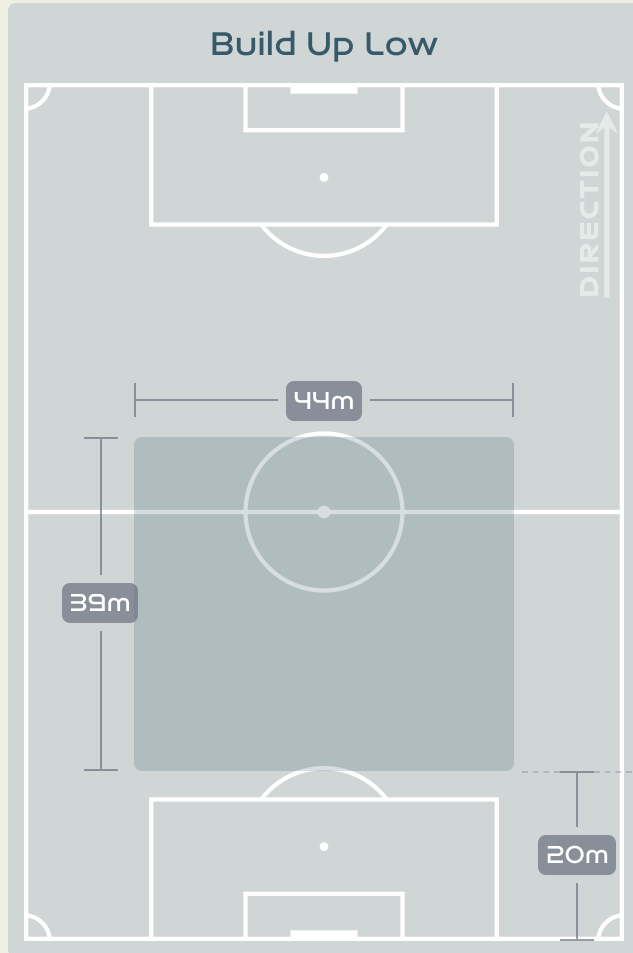
# IN POSSESSION



USA v Netherlands

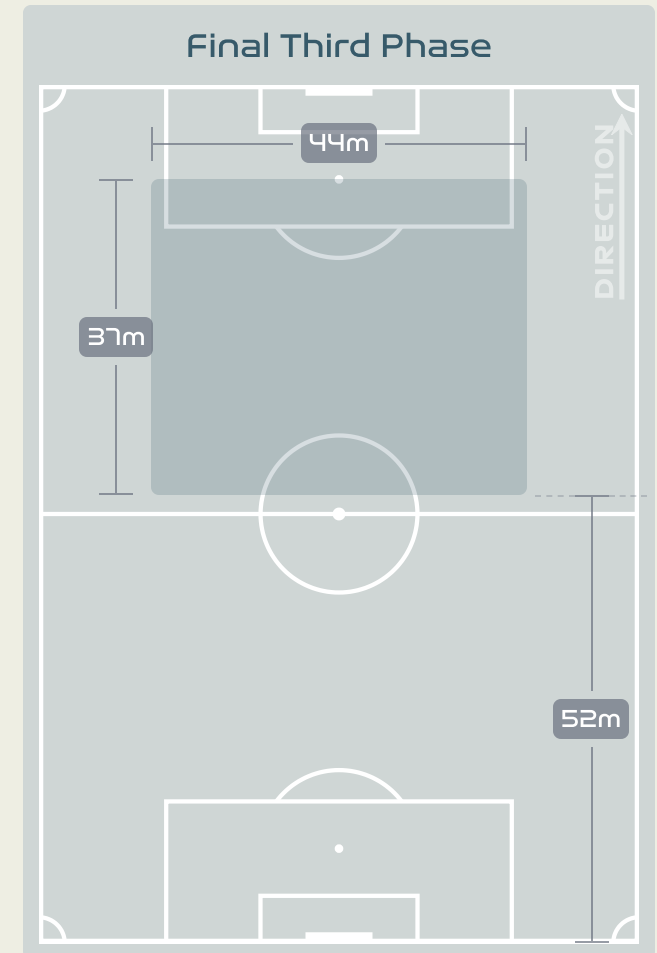
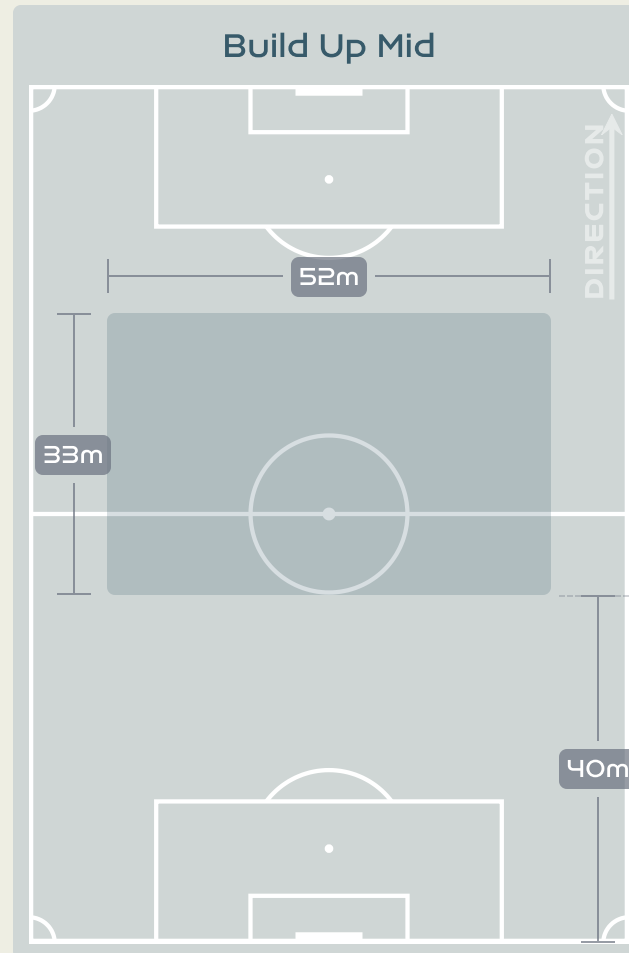
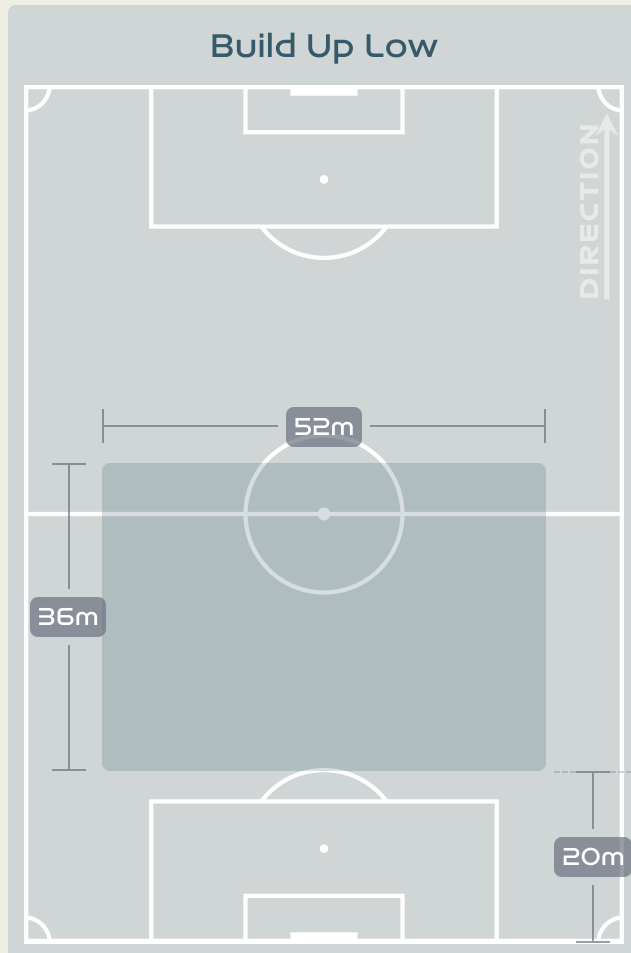


# In Possession Line Height & Team Length



# In Possession Line Height & Team Length

Netherlands

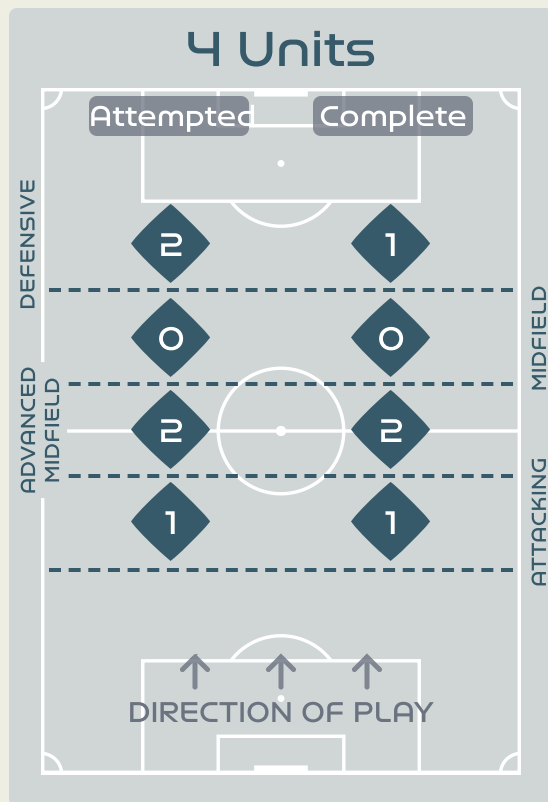
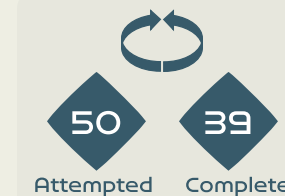
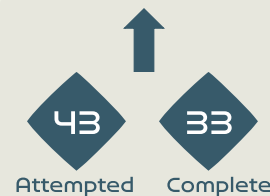


# Line Breaks



Attempted Line Breaks

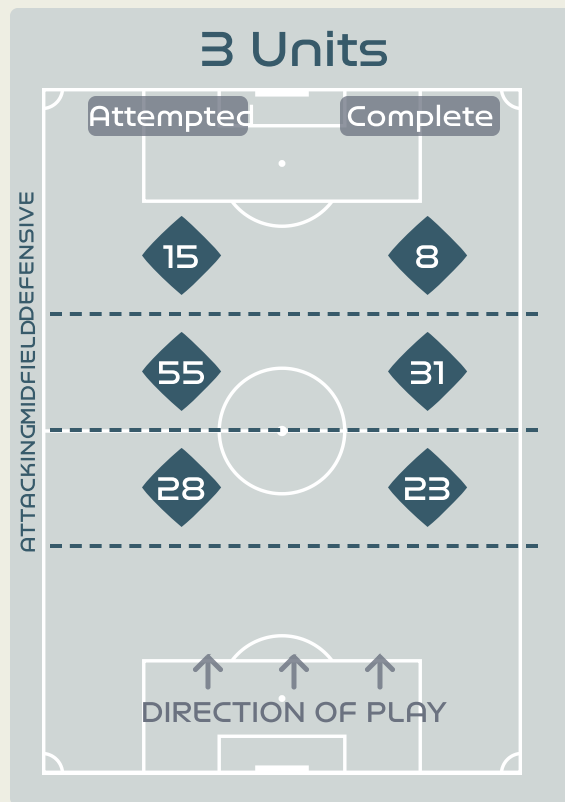
154



Attempted Line Breaks 5

Inside Shape 1

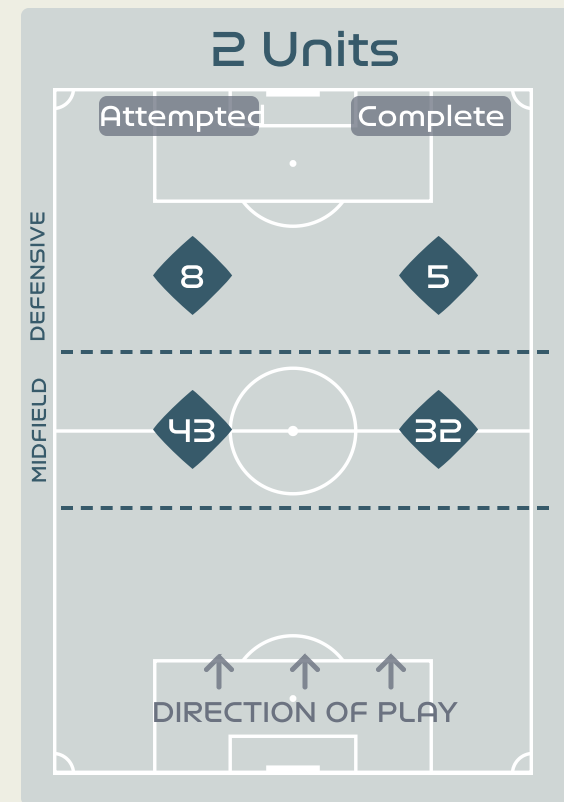
Outside Shape 4



Attempted Line Breaks 98

Inside Shape 61

Outside Shape 37



Attempted Line Breaks 51

Inside Shape 36

Outside Shape 15



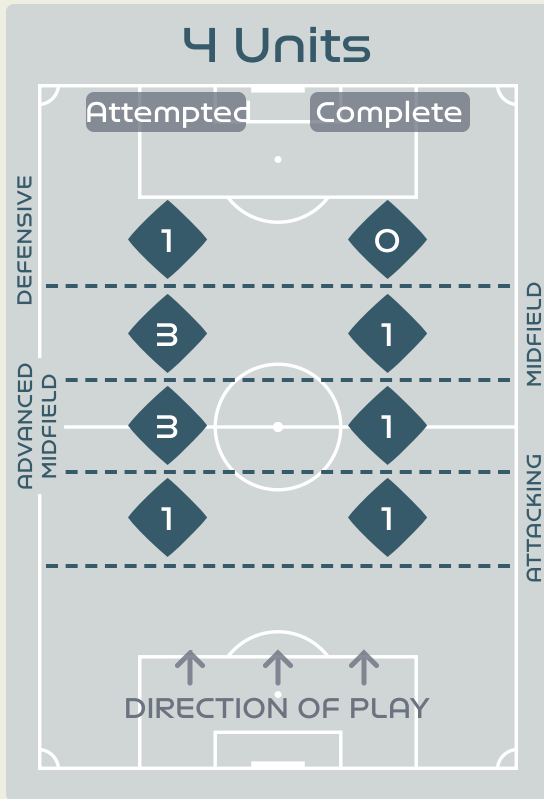
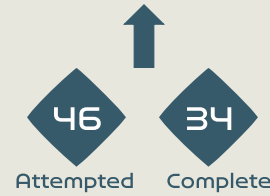
# Line Breaks



Netherlands

Attempted Line Breaks

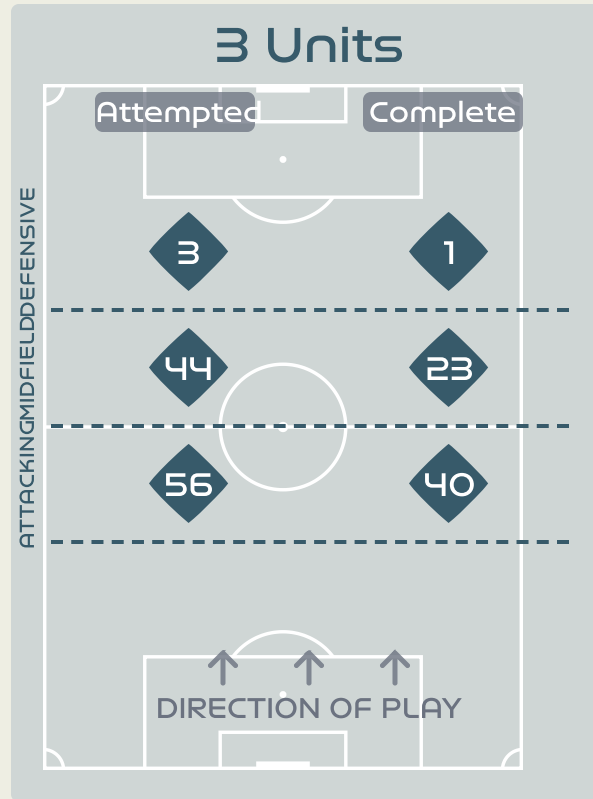
143



Attempted Line Breaks 8

Inside Shape 6

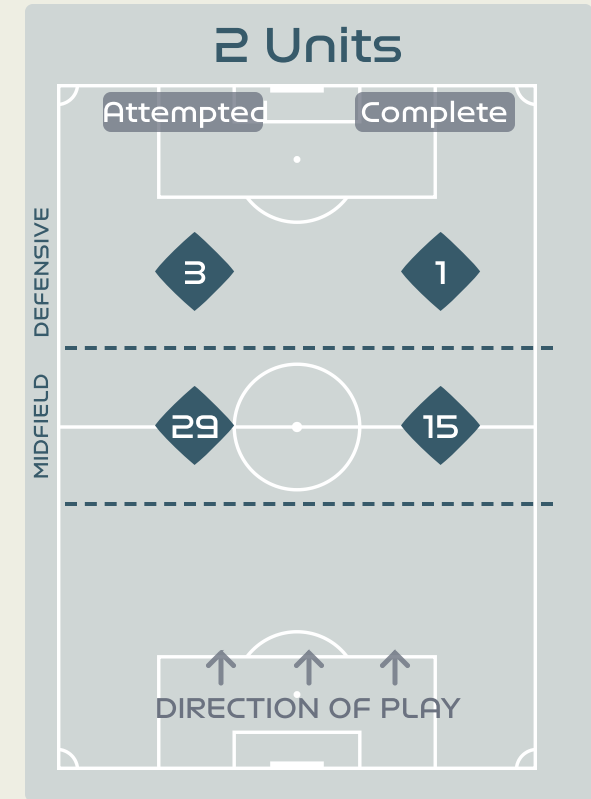
Outside Shape 2



Attempted Line Breaks 103

Inside Shape 71

Outside Shape 32



Attempted Line Breaks 32

Inside Shape 27

Outside Shape 5

## Line Breaks



					4 Units				3 Units			2 Units		Direction			Distribution Type		
#	Player	Line Breaks Attempted	Line Breaks Completed	Line Break Completion %	Attacking Line	Attacking Midfield Line	Midfield Line	Defensive Line	Attacking Line	Midfield Line	Defensive Line	Midfield Line	Defensive Line	Through	Around	Over	Pass	Cross	Ball Progression
1	NAEHER Alyssa	11	7	63%	0	0	0	0	6	3	0	2	0	1	2	8	11	0	0
4	GIRMA Naomi	15	11	73%	0	0	0	0	7	4	0	4	0	3	4	8	15	0	0
8	ERTZ Julie	19	12	63%	1	1	0	0	7	6	0	4	0	4	7	8	19	0	0
9	DEMELO Savannah	4	2	50%	0	0	0	1	0	1	0	2	0	1	1	2	4	0	0
10	HORAN Lindsey	15	13	86%	0	0	0	0	2	5	1	7	0	7	3	5	15	0	0
11	SMITH Sophia	12	8	66%	0	0	0	0	0	6	4	1	1	8	4	0	8	1	3
13	MORGAN Alex	9	6	66%	0	0	0	1	0	3	2	0	3	3	5	1	5	2	2
17	SULLIVAN Andi	8	6	75%	0	0	0	0	0	0	0	8	0	4	2	2	8	0	0
19	DUNN Crystal	28	20	71%	0	0	0	0	2	11	5	8	2	4	13	11	27	0	1
20	RODMAN Trinity	5	1	20%	0	0	0	0	0	3	1	1	0	1	2	2	5	0	0
23	FOX Emily	18	11	61%	0	1	0	0	4	7	1	3	2	4	4	10	17	0	1
16	LAVELLE Rose	10	6	60%	0	0	0	0	0	6	1	3	0	3	3	4	9	0	1

# Line Breaks



					4 Units				3 Units			2 Units		Direction			Distribution Type		
#	Player	Line Breaks Attempted	Line Breaks Completed	Line Break Completion %	Attacking Line	Attacking Midfield Line	Midfield Line	Defensive Line	Attacking Line	Midfield Line	Defensive Line	Midfield Line	Defensive Line	Through	Around	Over	Pass	Cross	Ball Progression
1	VAN DOMSELAAR Daphne	20	6	30%	1	0	0	0	10	7	0	2	0	0	1	19	20	0	0
3	VAN DER GRAGT Stefanie	4	4	100%	0	0	0	0	1	1	0	2	0	1	0	3	4	0	0
6	ROORD Jill	8	5	62%	0	0	0	0	1	5	1	1	0	7	0	1	7	0	1
8	SPITSE Sherida	35	25	71%	0	1	0	1	21	3	0	9	0	13	10	12	34	1	0
9	SNOEIJES Katja	0	0	0%	0	0	0	0	0	0	0	0	0	0	0	0	0	0	0
10	VAN DE DONK Danielle	9	6	66%	0	0	1	0	1	3	1	3	0	4	2	3	8	1	0
11	MARTENS Lieke	6	4	66%	0	0	0	0	0	4	1	0	1	2	3	1	4	0	2
14	GROENEN Jackie	8	4	50%	0	1	0	0	2	4	0	1	0	4	3	1	8	0	0
17	PELOVA Victoria	10	4	40%	0	0	0	0	4	3	0	3	0	2	3	5	5	1	4
20	JANSSEN Dominique	26	16	61%	0	1	2	0	10	6	0	6	1	8	8	10	25	0	1
22	BRUGTS Esmee	7	6	85%	0	0	0	0	4	2	0	1	0	1	3	3	7	0	0
4	NOUWEN Aniek	6	2	33%	0	0	0	0	2	3	0	0	1	3	0	3	6	0	0
13	JANSEN Renate	0	0	0%	0	0	0	0	0	0	0	0	0	0	0	0	0	0	0
18	CASPARIJ Kerstin	2	0	0%	0	0	0	0	0	2	0	0	0	0	2	0	2	0	0
21	EGURROLA Damaris	2	1	50%	0	0	0	0	0	1	0	1	0	1	0	1	2	0	0



# Passing Networks

#	Passes From ↓ to →	NAEHER Alyssa	GIRMA Naomi	ERTZ Julie	DEMELO Savannah	HORAN Lindsey	SMITH Sophia	MORGAN Alex	SULLIVAN Andi	DUNN Crystal	RODMAN Trinity	FOX Emily	LAVELLE Rose
1	NAEHER Alyssa		3	5	0	2	1	0	1	3	1	0	0
4	GIRMA Naomi	5		5	0	2	1	1	1	8	0	2	1
8	ERTZ Julie	4	2		1	1	2	0	3	4	3	4	2
9	DEMELO Savannah	1	1	0		0	1	0	0	3	1	1	0
10	HORAN Lindsey	0	1	2	3		4	3	0	10	2	1	2
11	SMITH Sophia	0	0	0	2	0		1	0	4	2	0	1
13	MORGAN Alex	0	0	2	3	2	3		0	2	2	1	2
17	SULLIVAN Andi	1	5	2	1	1	2	1		4	4	3	1
19	DUNN Crystal	0	4	1	0	6	8	7	6		1	2	1
20	RODMAN Trinity	0	1	1	1	1	0	1	1	1		2	1
23	FOX Emily	0	0	5	2	2	1	0	5	0	5		4
16	LAVELLE Rose	0	0	1	0	2	0	1	1	0	4	2	

Top 5 Player to Player Passers		
Player	Passed To	% of Total Team Passes
HORAN Lindsey	DUNN Crystal	4.2%
GIRMA Naomi	DUNN Crystal	3.4%
DUNN Crystal	SMITH Sophia	3.4%
DUNN Crystal	MORGAN Alex	3%
DUNN Crystal	HORAN Lindsey	2.5%

# Passing Networks

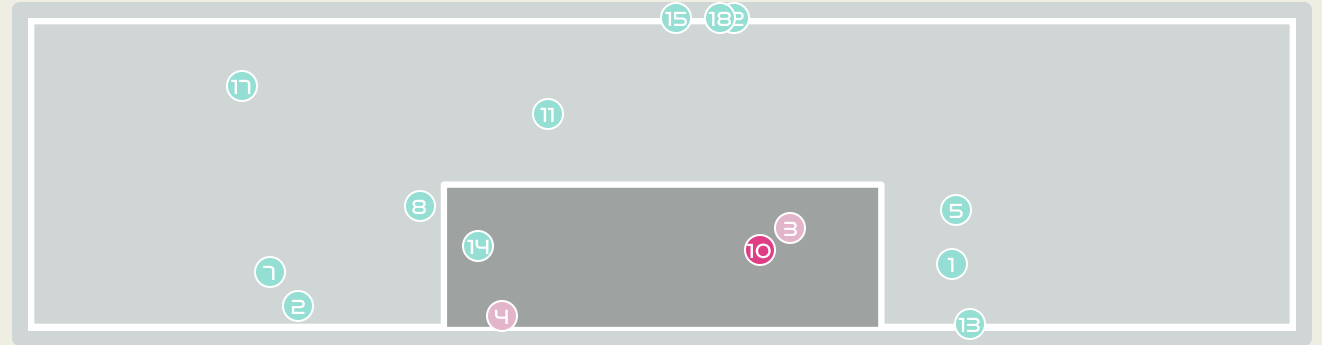
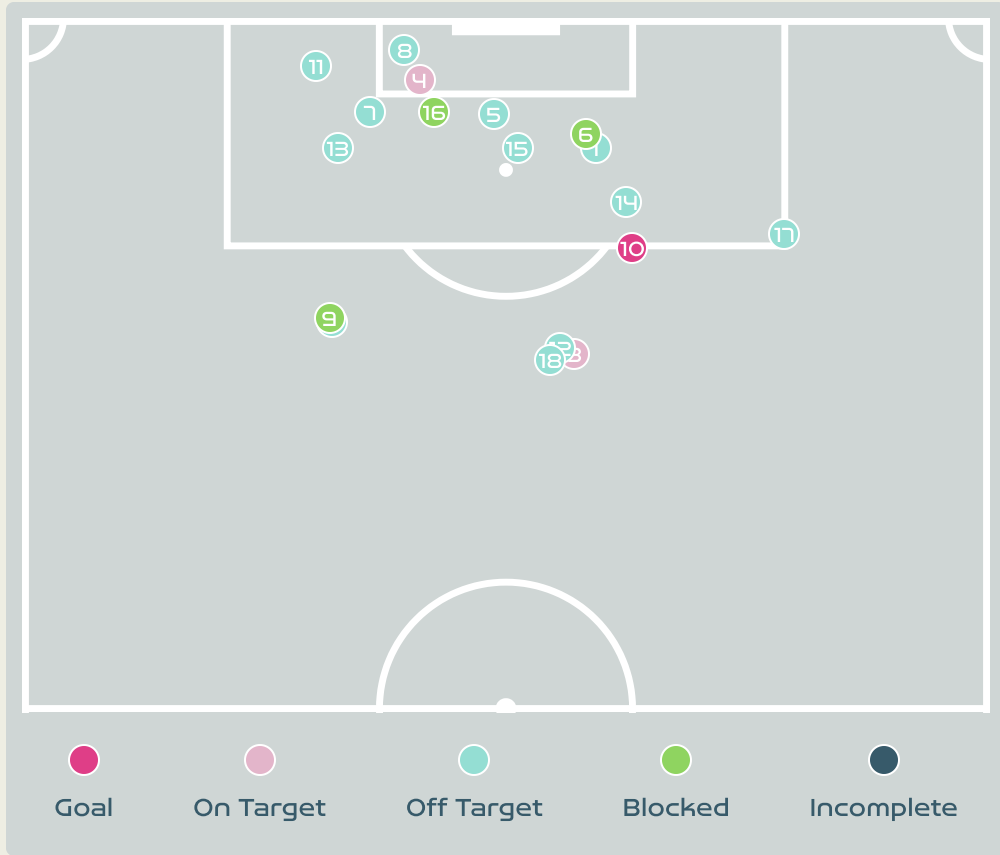


#	Passes From ↓ to →	VAN DOMSELAAR Daphne	VAN DER GRAGT Stefanie	ROORD Jill	SPITSE Sherida	SNOEIJES Katja	VAN DE DONK Danielle	MARTENS Lieke	GROENEN Jackie	PELOVA Victoria	JANSSEN Dominique	BRUGTS Esmee	NOUWEN Aniek	JANSEN Renate	CASPARIJ Kerstin	EGURROLA Damaris
1	VAN DOMSELAAR Daphne		1	0	1	0	0	1	0	0	3	3	0	0	0	1
3	VAN DER GRAGT Stefanie	3		1	8	1	0	1	1	1	6	2	0	0	0	0
6	ROORD Jill	1	4		14	2	3	4	6	11	1	4	0	0	1	2
8	SPITSE Sherida	1	11	15		1	6	3	4	8	2	0	4	0	1	1
9	SNOEIJES Katja	0	0	3	0		2	2	0	2	0	0	0	0	0	0
10	VAN DE DONK Danielle	0	2	8	1	0		3	1	7	1	4	1	0	0	1
11	MARTENS Lieke	0	0	3	0	2	4		2	5	5	6	1	0	0	0
14	GROENEN Jackie	3	0	3	7	0	3	4		2	7	2	1	0	0	0
17	PELOVA Victoria	0	2	11	19	0	6	4	2		0	0	0	0	0	1
20	JANSSEN Dominique	1	3	2	7	1	1	4	3	3		5	3	0	0	0
22	BRUGTS Esmee	0	0	2	1	1	3	4	5	1	9		1	0	0	0
4	NOUWEN Aniek	2	0	1	4	0	0	0	0	1	3	0		0	0	0
13	JANSEN Renate	0	0	0	0	0	0	0	0	0	0	0	0		0	0
18	CASPARIJ Kerstin	0	0	0	0	0	1	0	0	0	0	0	0	0		0
21	EGURROLA Damaris	0	0	0	2	0	2	1	0	1	0	0	0	0	0	

Top 5 Player to Player Passers		
Player	Passed To	% of Total Team Passes
PELOVA Victoria	SPITSE Sherida	5.2%
SPITSE Sherida	ROORD Jill	4.1%
ROORD Jill	SPITSE Sherida	3.8%
ROORD Jill	PELOVA Victoria	3%
SPITSE Sherida	VAN DER GRAGT Stefanie	3%



# Attempts at Goal



Key	Outcome	Shots
●	Goals	1
●	On Target	2
●	Off Target	12
●	Blocked	3
●	Incomplete	0



# Attempts at Goal

Time	Player	Outcome	Body Part	Delivery Type
8	9 DEMELO Savannah	Off Target	Right Foot	Pass
11	19 DUNN Crystal	Deflected Off Target - Saved	Left Foot	Pass
17	20RODMAN Trinity	On Target - Saved	Left Foot	Loose Ball
18	10 HORAN Lindsey	On Target - Saved	Head	Corner
21	13 MORGAN Alex	Off Target	Head	Corner
32	8 ERTZ Julie	Incomplete - Blocked	Right Foot	Pass
34	8 ERTZ Julie	Deflected Off Target - Defensive Event	Head	Corner
35	10 HORAN Lindsey	Off Target	Head	Corner
42	11 SMITH Sophia	Incomplete - Blocked	Right Foot	Ball Progression
61	10 HORAN Lindsey	On Target - Goal	Head	Corner
72	11 SMITH Sophia	Off Target	Left Foot	Loose Ball
80	16 LAVELLE Rose	Off Target	Right Foot	Loose Ball
81	20RODMAN Trinity	Off Target	Left Foot	Pass
82	11 SMITH Sophia	Deflected Off Target - Defensive Event	Left Foot	Loose Ball
83	20RODMAN Trinity	Deflected Off Target - Defensive Event	Head	Corner
85	13 MORGAN Alex	Incomplete - Blocked	Head	Pass
85	20RODMAN Trinity	Off Target	Left Foot	Pass



# Attempts at Goal

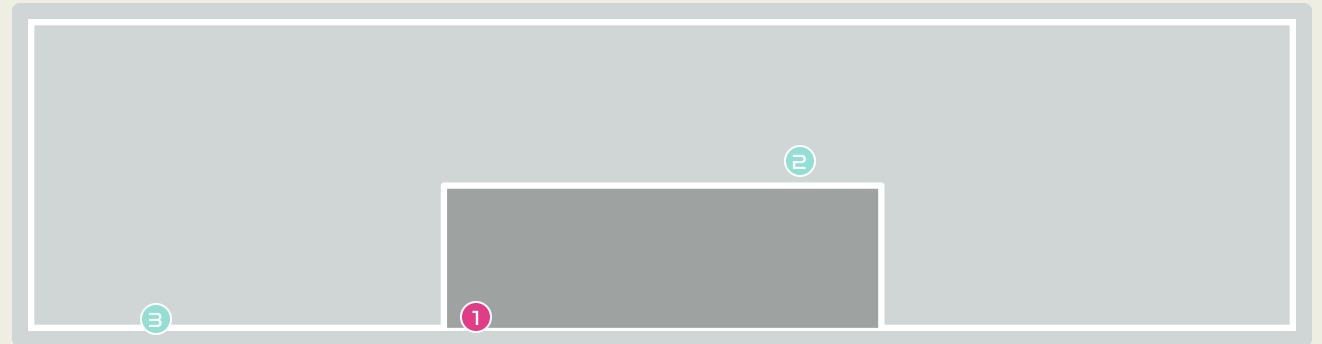
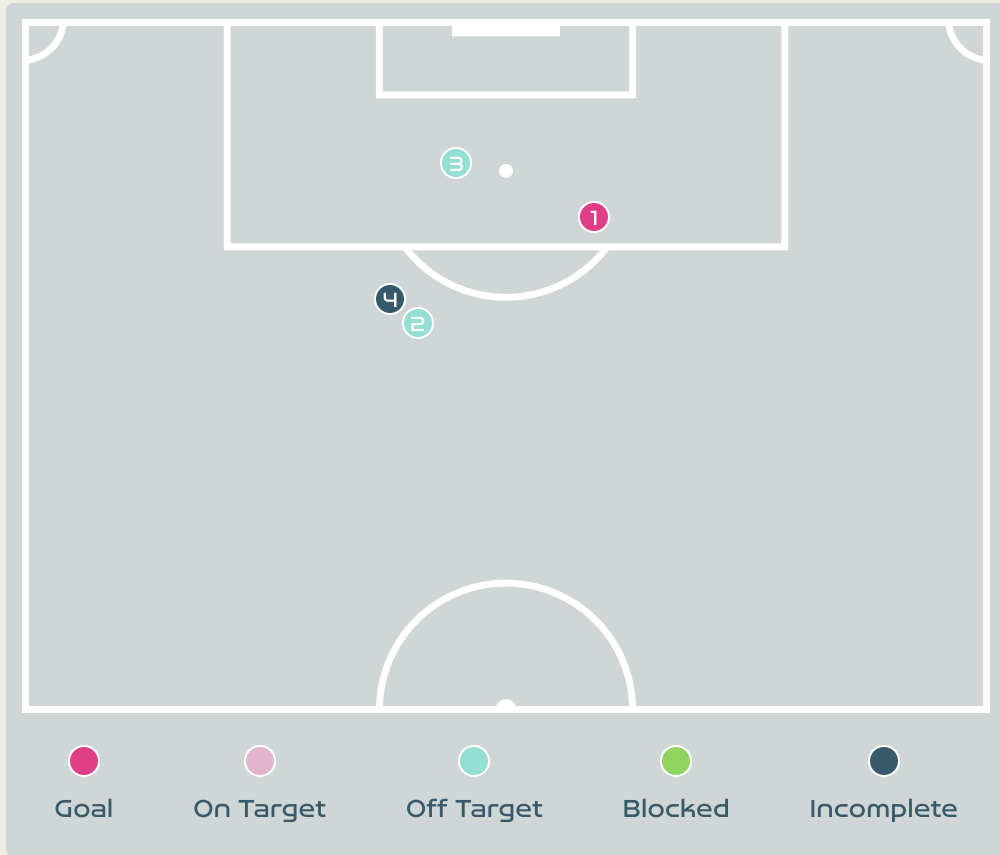
Time	Player	Outcome	Body Part	Delivery Type
92	17 SULLIVAN Andi	Off Target	Right Foot	Pass



Netherlands



# Attempts at Goal



Key	Outcome	Shots
<span style="color: red;">●</span>	Goals	1
<span style="color: pink;">●</span>	On Target	0
<span style="color: cyan;">●</span>	Off Target	2
<span style="color: green;">●</span>	Blocked	0
<span style="color: darkblue;">●</span>	Incomplete	1

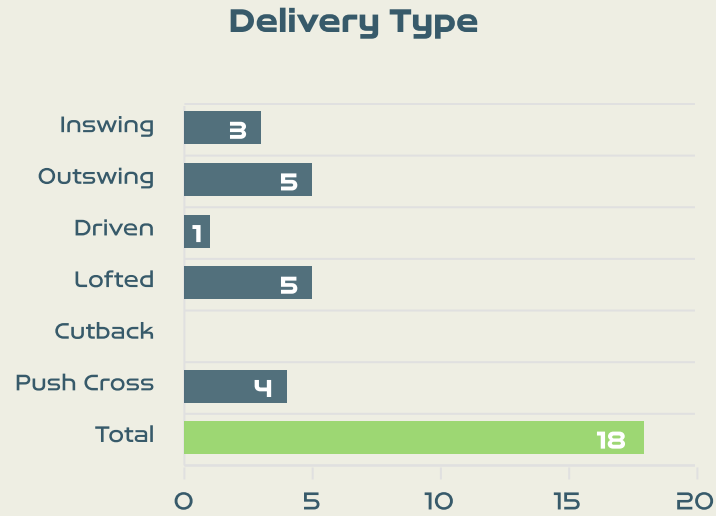
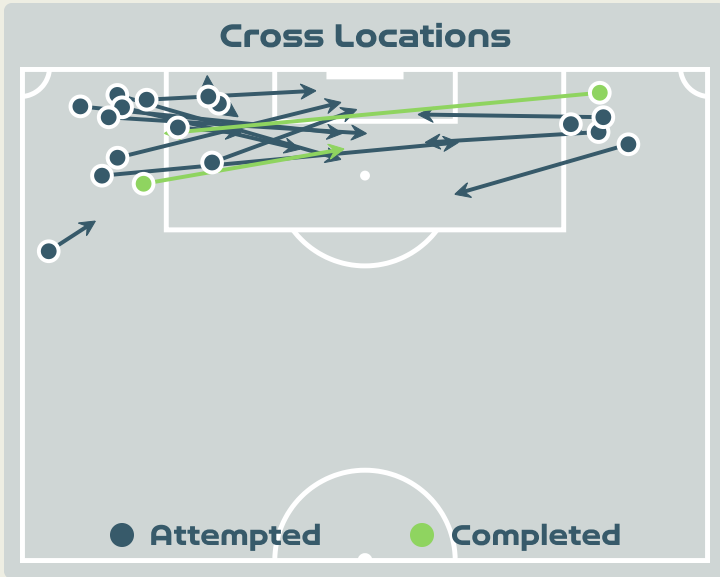
# Attempts at Goal

**Netherlands**

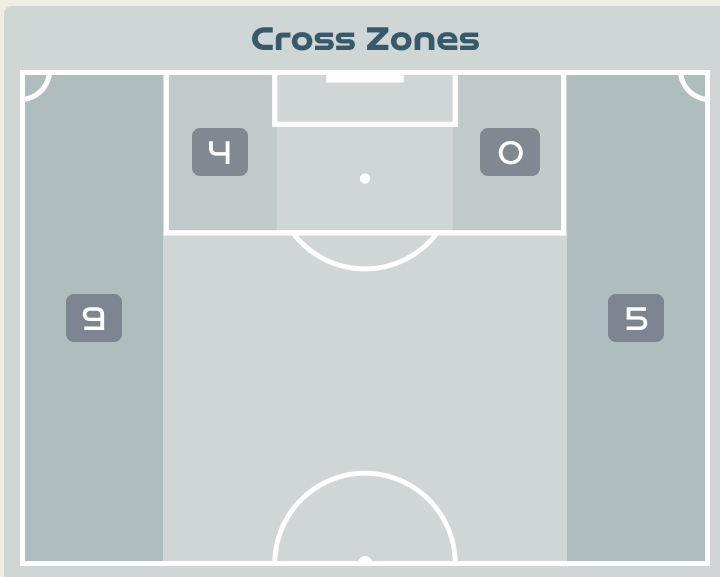
Time	Player	Outcome	Body Part	Delivery Type
16	6 ROORD Jill	On Target - Goal	Right Foot	Pass
28	20 JANSSEN Dominique	Off Target	Right Foot	Loose Ball
79	22 BRUGTS Esmee	Deflected Off Target - Defensive Event	Right Foot	Cross
79	22 BRUGTS Esmee	Incomplete - Player On Ball Error	Right Foot	Loose Ball



# Crosses (Open Play)



#	Player	Inswing	Outswing	Driven	Lofted	Cutback	Push Cross	Total Attempted
1	NAEHER Alyssa	0	0	0	0	0	0	0
4	GIRMA Naomi	0	0	0	0	0	0	0
8	ERTZ Julie	0	0	0	0	0	0	0
9	DEMELO Savannah	0	0	0	0	0	0	0
10	HORAN Lindsey	0	0	0	0	0	0	0
11	SMITH Sophia	2	4	0	0	0	0	6
13	MORGAN Alex	0	1	1	2	0	2	6
17	SULLIVAN Andi	0	0	0	0	0	0	0
19	DUNN Crystal	0	0	0	1	0	0	1
20	RODMAN Trinity	0	0	0	2	0	1	3
23	FOX Emily	0	0	0	0	0	1	1
16	LAVELLE Rose	1	0	0	0	0	0	1



Attempted

**18**

Completed

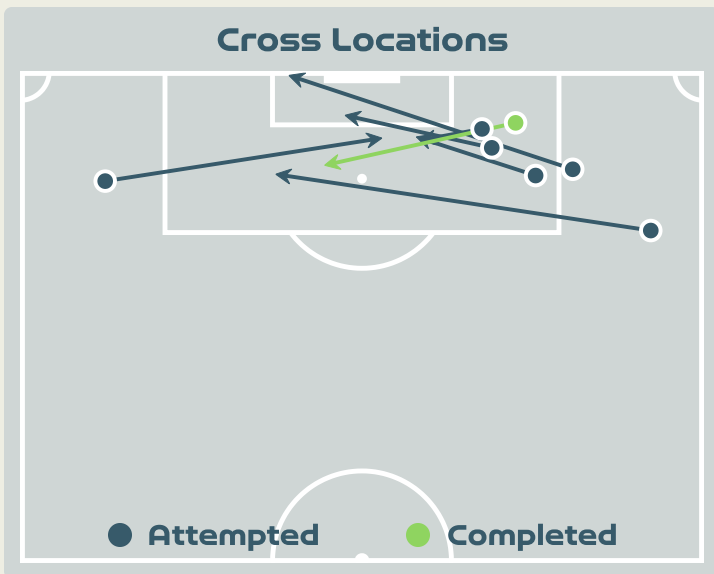
**2**

Most Crosses Attempted

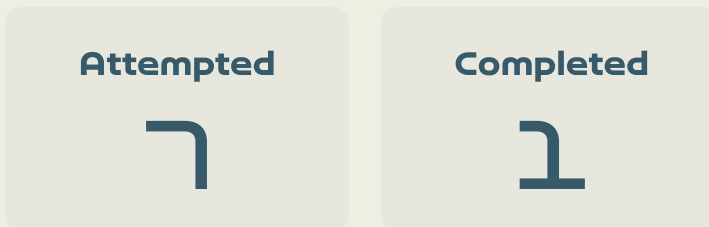
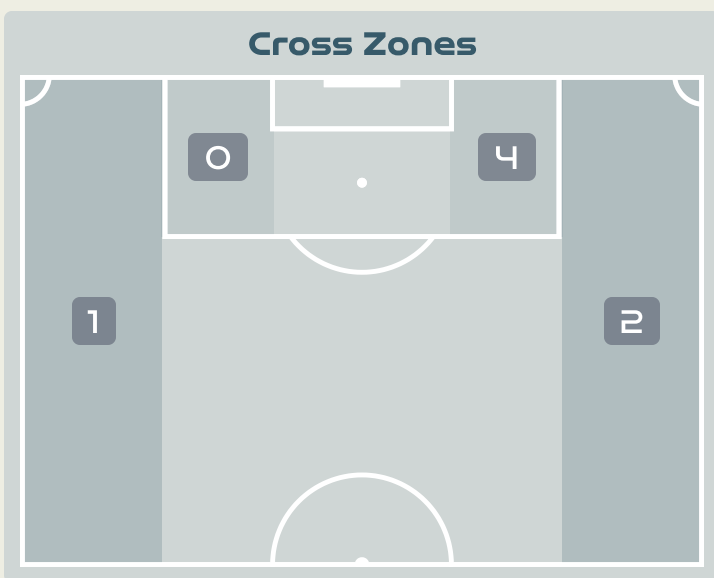
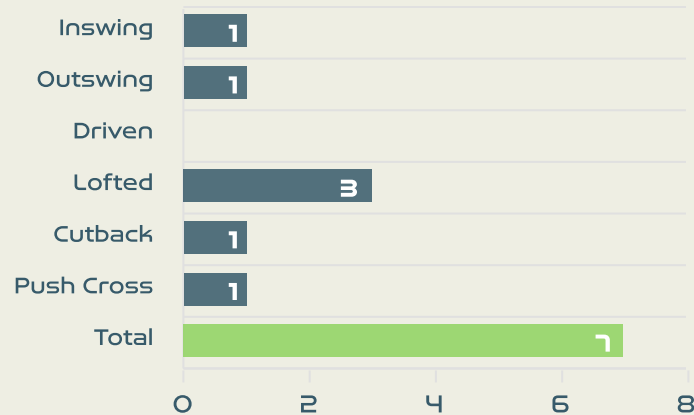
**6**

**SMITH Sophia**  
LEFT WINGER

# Crosses (Open Play)



### Delivery Type



#	Player	Inswing	Outswing	Driven	Lofted	Cutback	Push Cross	Total Attempted
1	VAN DOMSELAAR Daphne	0	0	0	0	0	0	0
3	VAN DER GRAGT Stefanie	0	0	0	0	0	0	0
6	ROORD Jill	0	0	0	0	1	0	1
8	SPITSE Sherida	0	0	0	0	0	0	0
9	SNOEIJES Katja	0	0	0	0	0	0	0
10	VAN DE DONK Danielle	1	0	0	0	0	0	1
11	MARTENS Lieke	0	1	0	0	0	0	1
14	GROENEN Jackie	0	0	0	0	0	0	0
17	PELOVA Victoria	0	0	0	3	0	1	4
20	JANSSEN Dominique	0	0	0	0	0	0	0
22	BRUGTS Esmee	0	0	0	0	0	0	0
4	NOUWEN Aniek	0	0	0	0	0	0	0
13	JANSEN Renate	0	0	0	0	0	0	0
18	CASPARIJ Kerstin	0	0	0	0	0	0	0
21	EGURROLA Damaris	0	0	0	0	0	0	0



# Offering to Receive

253

Total Offers Made

76

Total Offers Received

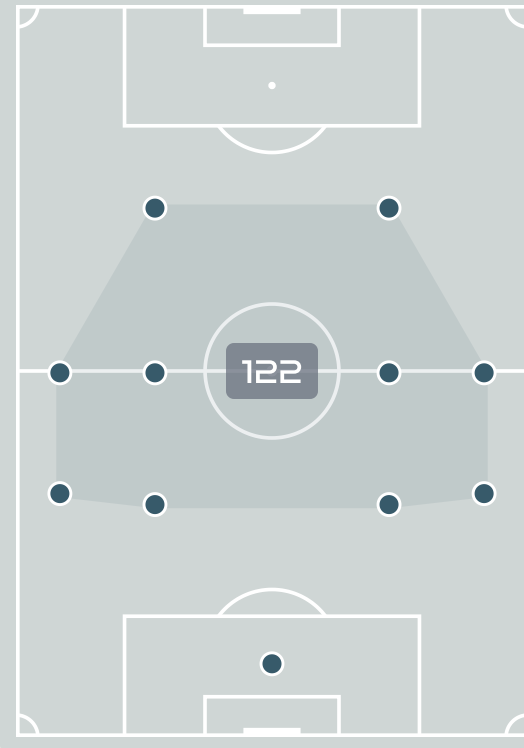
Most Offers

46

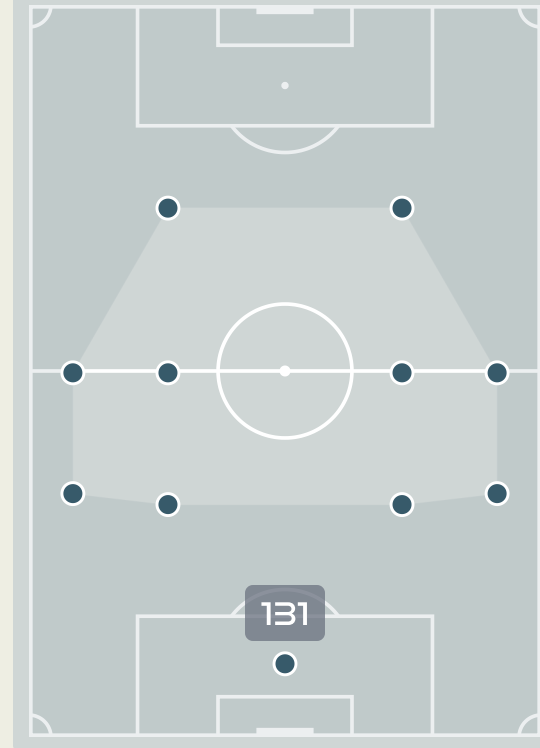
HORAN Lindsey  
LEFT CENTRE MIDFIELD

#	Player	Offers Made	Offers Received	% Made & Received
1	NAEHER Alyssa	8	3	37.5%
4	GIRMA Naomi	17	5	29.4%
8	ERTZ Julie	12	4	33.3%
9	DEMELO Savannah	30	9	30%
10	HORAN Lindsey	46	6	13%
11	SMITH Sophia	17	9	52.9%
13	MORGAN Alex	26	4	15.4%
17	SULLIVAN Andi	13	8	61.5%
19	DUNN Crystal	5	2	40%
20	RODMAN Trinity	25	10	40%
23	FOX Emily	27	8	29.6%
16	LAVELLE Rose	27	8	29.6%

Offers Made Inside Shape



Offers Made Outside Shape



121

Offers Made in Final Third

100

Offers Made in Middle Third

32

Offers Made in Defensive Third



# Offering to Receive

370

Total Offers Made

118

Total Offers Received

Most Offers

57

MARTENS Lieke  
CENTRE FORWARD LEFT

#	Player	Offers Made	Offers Received	% Made & Received
1	VAN DOMSELAAR Daphne	9	1	11.1%
3	VAN DER GRAGT Stefanie	0	0	0%
6	ROORD Jill	34	19	55.9%
8	SPITSE Sherida	13	10	76.9%
9	SNOEIJES Katja	44	4	9.1%
10	VAN DE DONK Daniëlle	37	8	21.6%
11	MARTENS Lieke	57	18	31.6%
14	GROENEN Jackie	55	13	23.6%
17	PELOVA Victoria	51	21	41.2%
20	JANSSEN Dominique	22	10	45.5%
22	BRUGTS Esmee	34	10	29.4%
4	NOUWEN Aniek	2	2	100%
13	JANSEN Renate	1	0	0%
18	CASPARIJ Kerstin	2	1	50%
21	EGURROLA Damaris	9	1	11.1%

101

Offers Made in Final Third

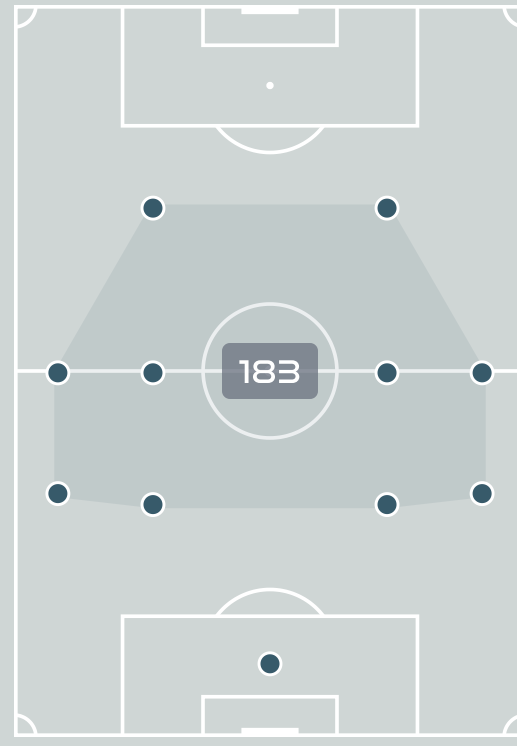
204

Offers Made in Middle Third

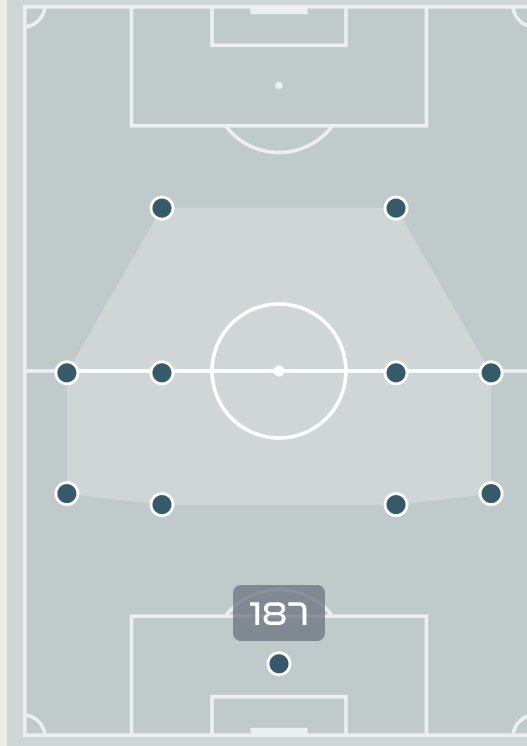
65

Offers Made in Defensive Third

Offers Made Inside Shape



Offers Made Outside Shape

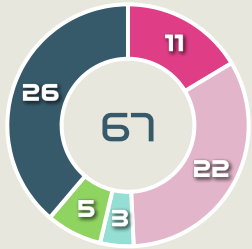




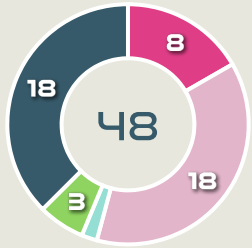
# Movement to Receive

## Movement Types by Phase

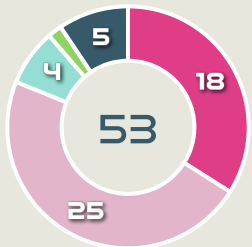
### Final Third Phase



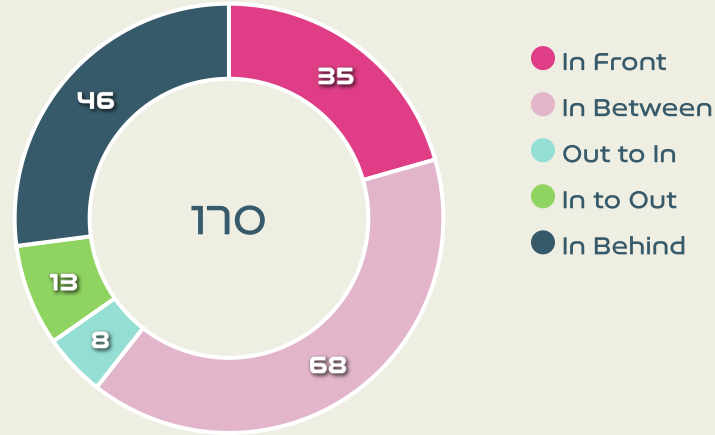
### Progression Phase



### Build Up Phase



## All Movement Types

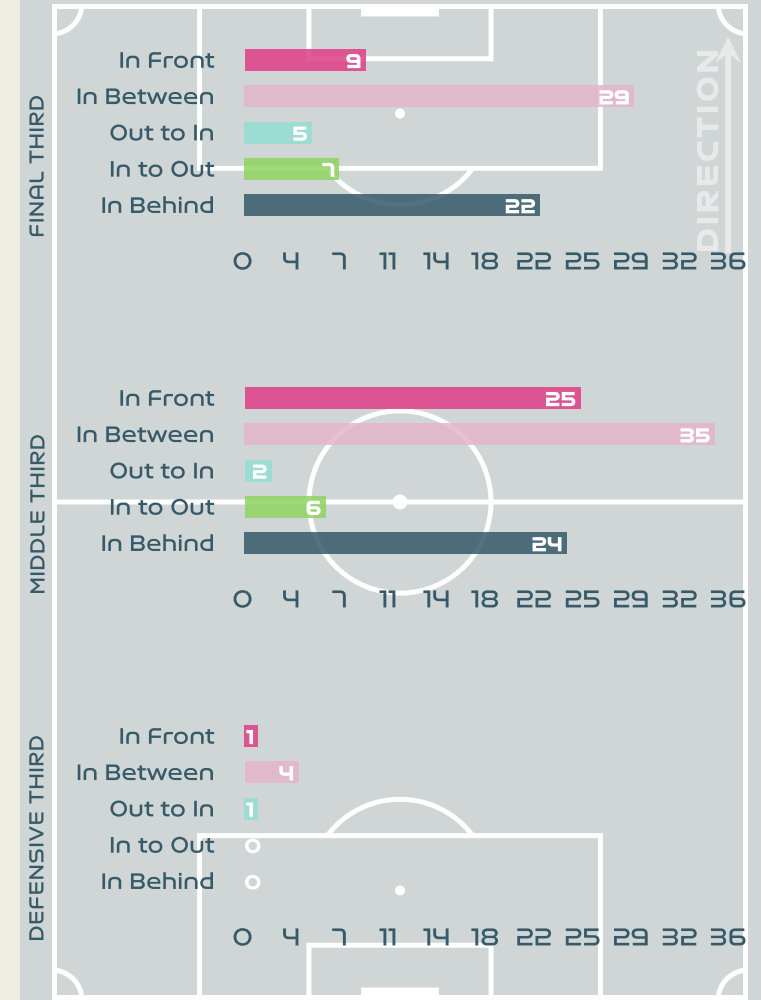


- In Front
- In Between
- Out to In
- In to Out
- In Behind

## Top Ranked Players

Type	Player	Movements
In Front	10 HORAN Lindsey	11
In Between	9 DEMELO Savannah	19
Out to In	10 HORAN Lindsey	3
In to Out	10 HORAN Lindsey	4
In Behind	13 MORGAN Alex	16

## Movement Types Pitch Third

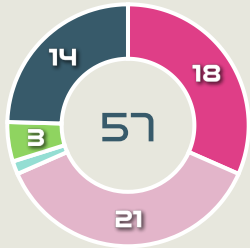




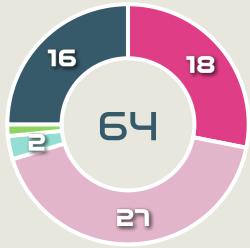
# Movement to Receive

## Movement Types by Phase

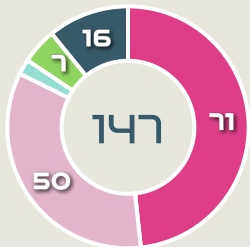
### Final Third Phase



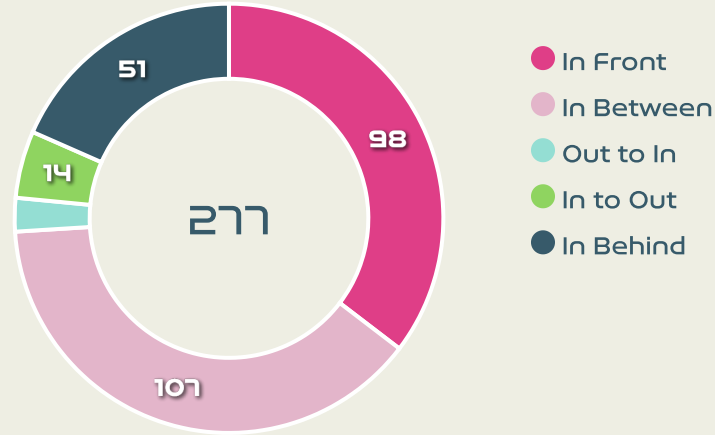
### Progression Phase



### Build Up Phase



## All Movement Types

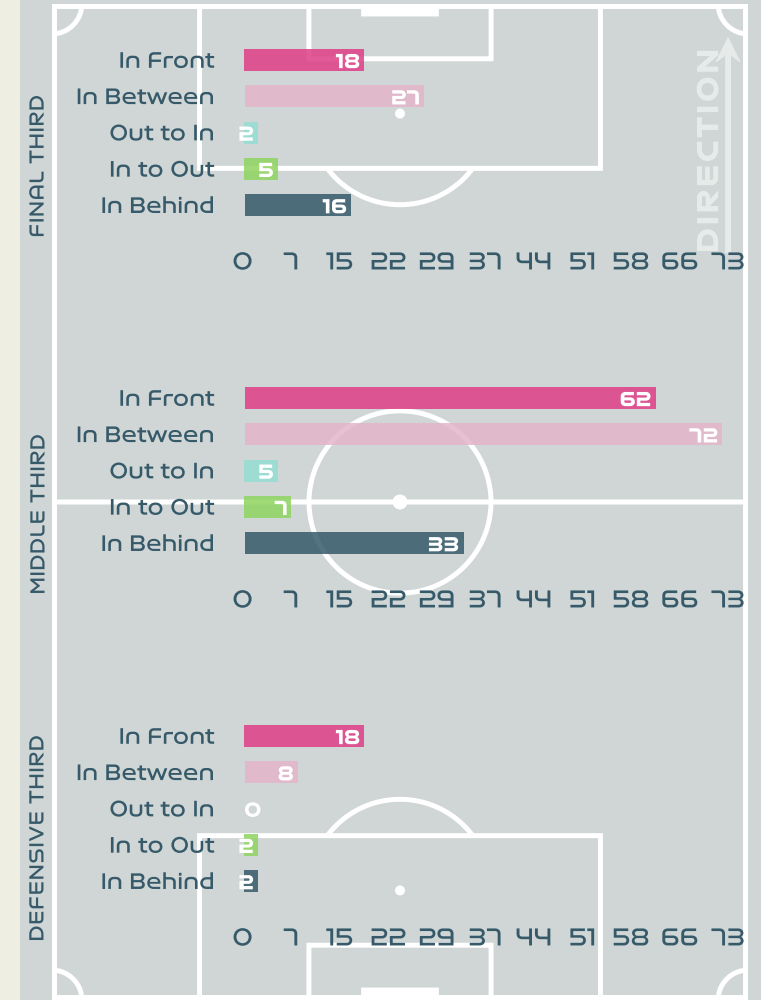


- In Front
- In Between
- Out to In
- In to Out
- In Behind

## Top Ranked Players

Type	Player	Movements
In Front	14 GROENEN Jackie	35
In Between	11 MARTENS Lieke	33
Out to In	6 ROORD Jill	2
In to Out	11 MARTENS Lieke	7
In Behind	9 SNOEIJIS Katja	22

## Movement Types Pitch Third







# OUT OF POSSESSION

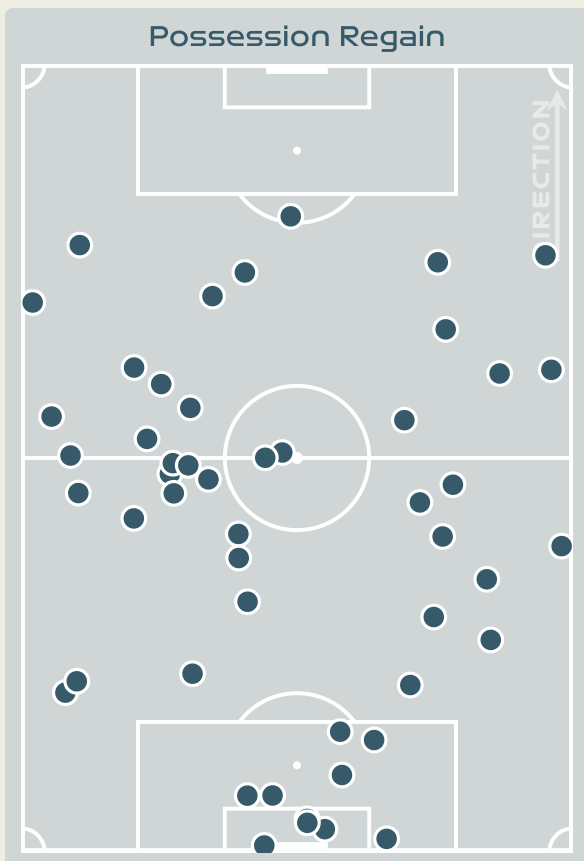
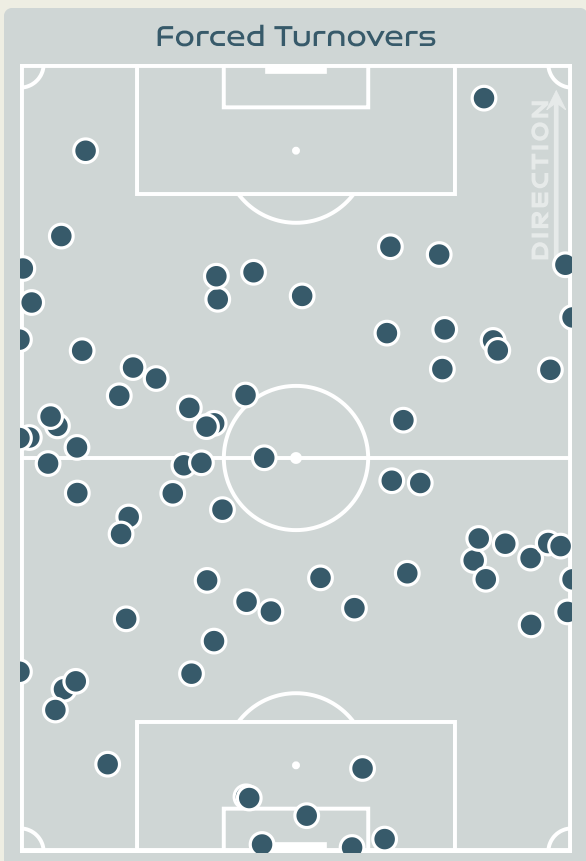


USA v Netherlands





# Defensive Actions



## Blocks



## Possession Contests



## Most Possession Regains

**7**  
**DUNN Crystal**  
LEFT BACK

#	Player	Total Possession Regains
1	NAEHER Alyssa	6
4	GIRMA Naomi	5
8	ERTZ Julie	5
9	DEMELO Savannah	4
10	HORAN Lindsey	6
11	SMITH Sophia	2
13	MORGAN Alex	3
17	SULLIVAN Andi	6
19	DUNN Crystal	7
20	RODMAN Trinity	6
23	FOX Emily	1
16	LAVELLE Rose	3

# Defensive Actions

**95**

Forced Turnovers

**61**

Possession Regained

**7**

Interceptions

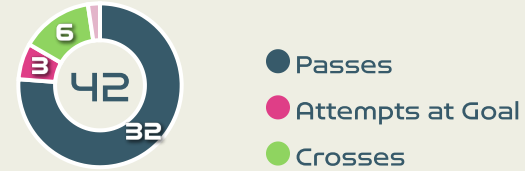
**35**

Tackles

**2.86**

Possession Actions / Defensive Action

## Blocks



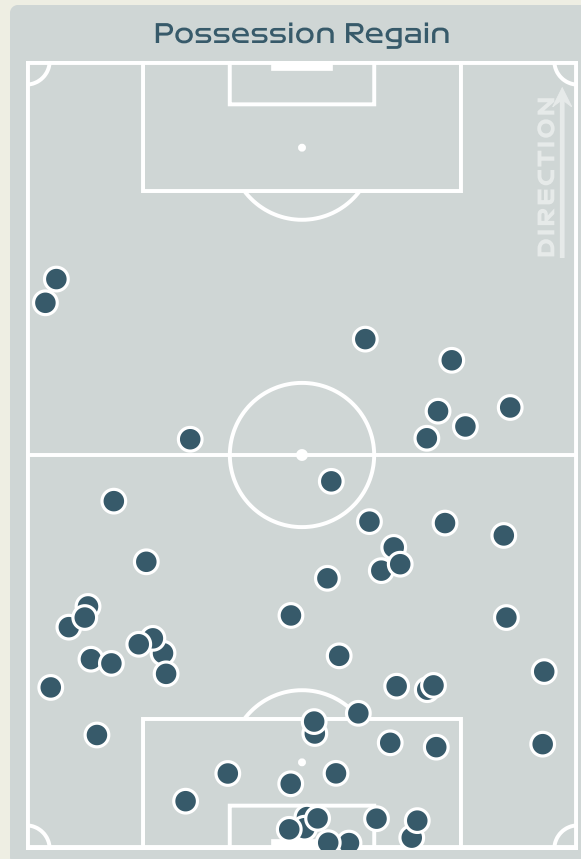
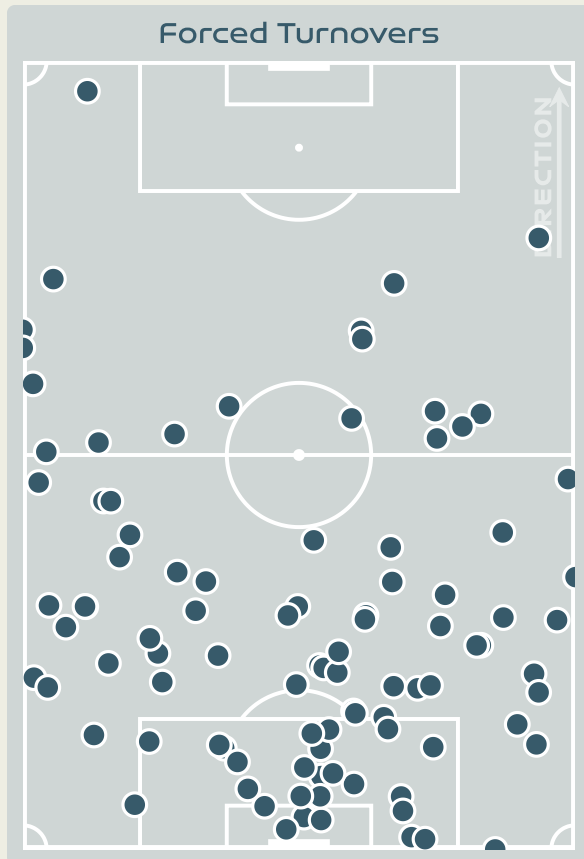
## Possession Contests



## Most Possession Regains

**9**

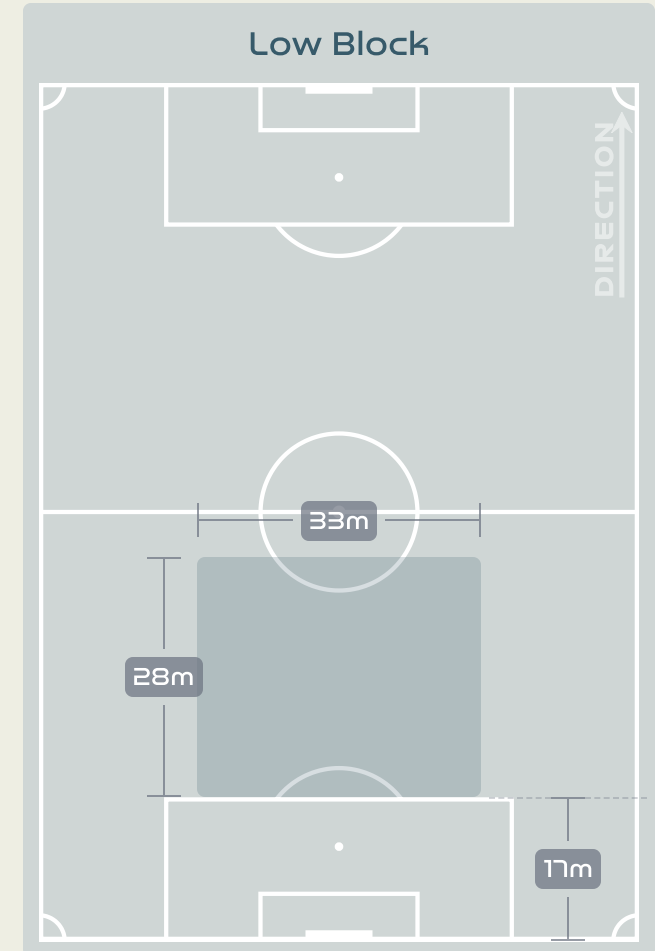
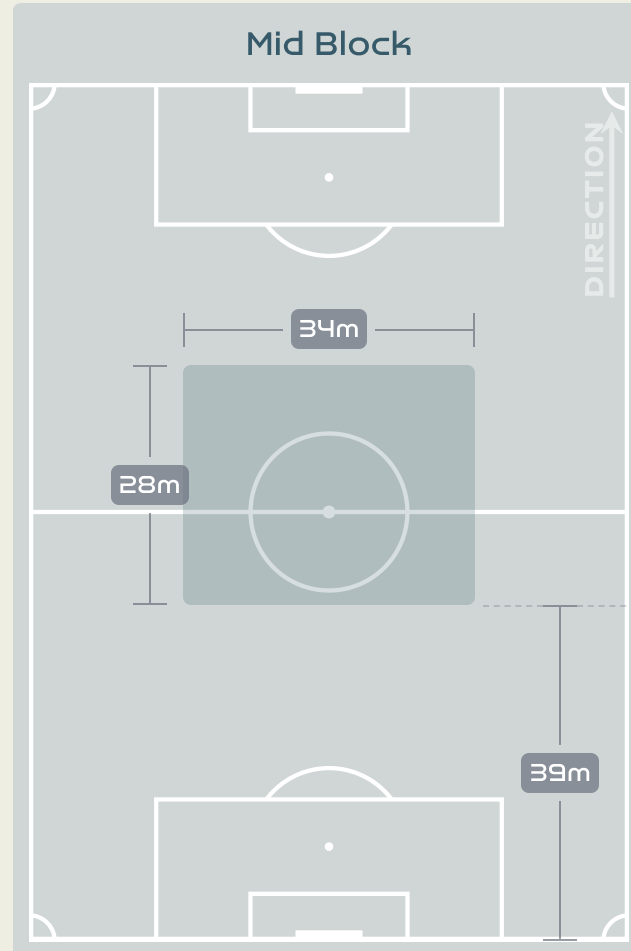
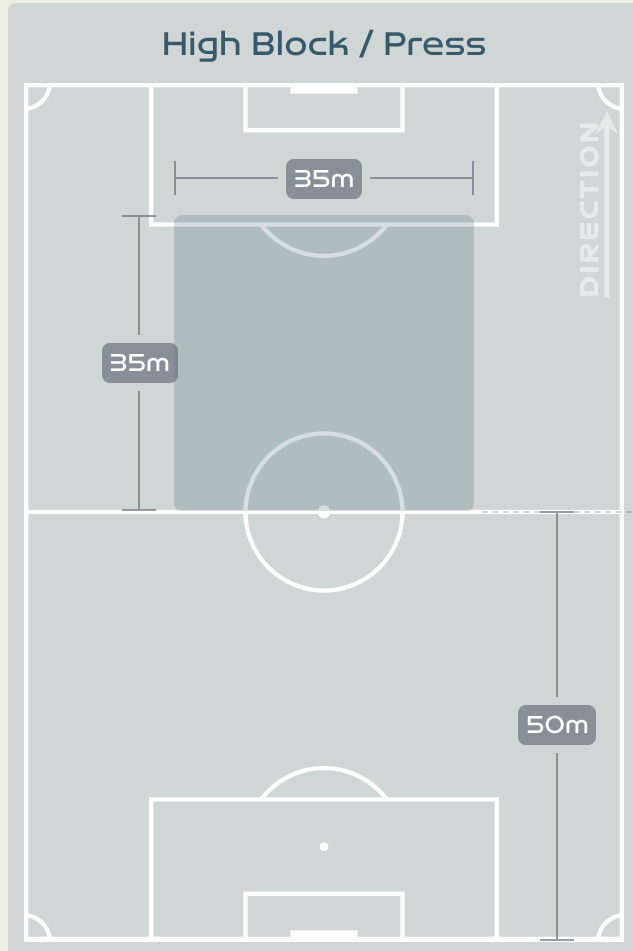
**JANSSEN Dominique**  
LEFT BACK



#	Player	Total Possession Regains
1	VAN DOMSELAAR Daphne	8
3	VAN DER GRAGT Stefanie	2
6	ROORD Jill	3
8	SPITSE Sherida	5
9	SNOEIJES Katja	0
10	VAN DE DONK Danielle	8
11	MARTENS Lieke	1
14	GROENEN Jackie	8
17	PELOVA Victoria	7
20	JANSSEN Dominique	9
22	BRUGTS Esmee	1
4	NOUWEN Aniek	7
13	JANSEN Renate	0
18	CASPARIJ Kerstin	1
21	EGURROLA Damaris	1

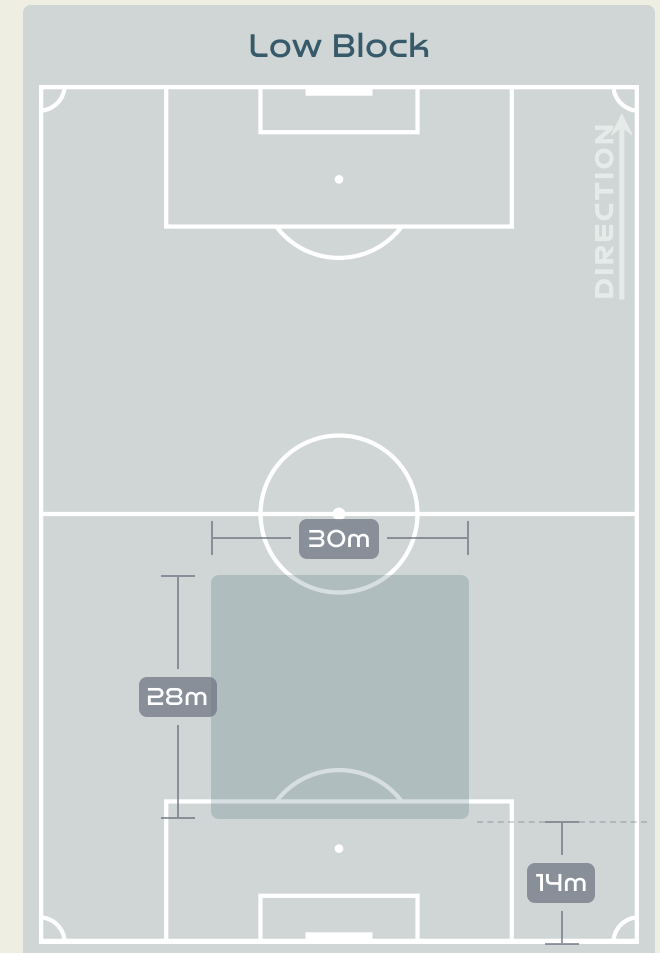
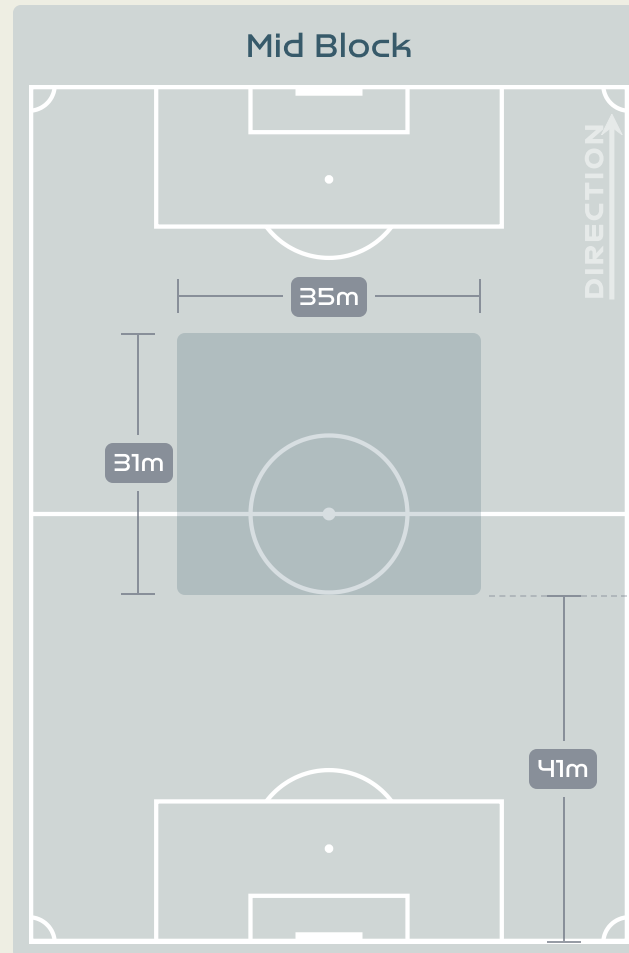
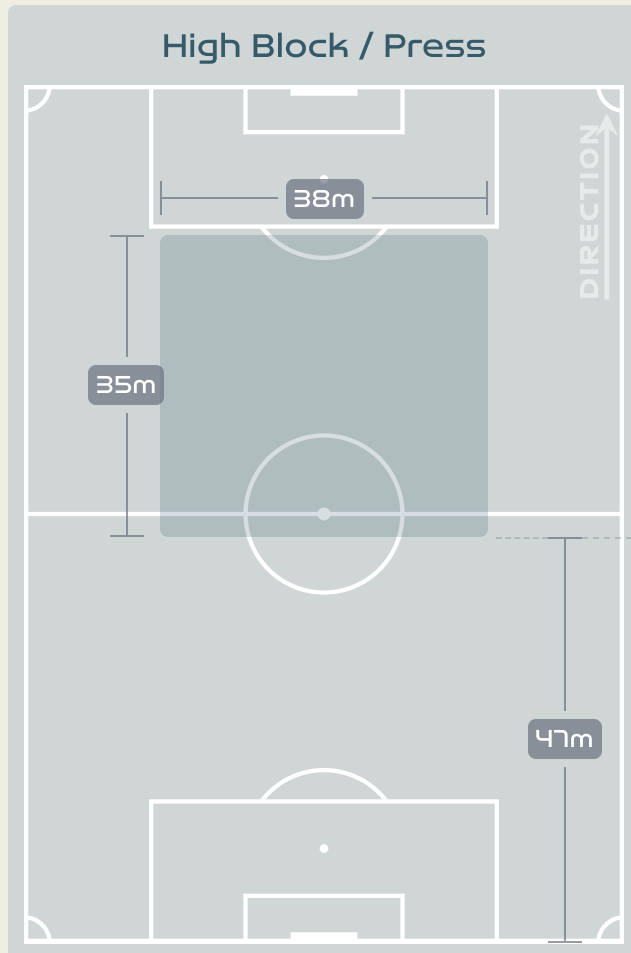


# Defensive Line Height & Team Length

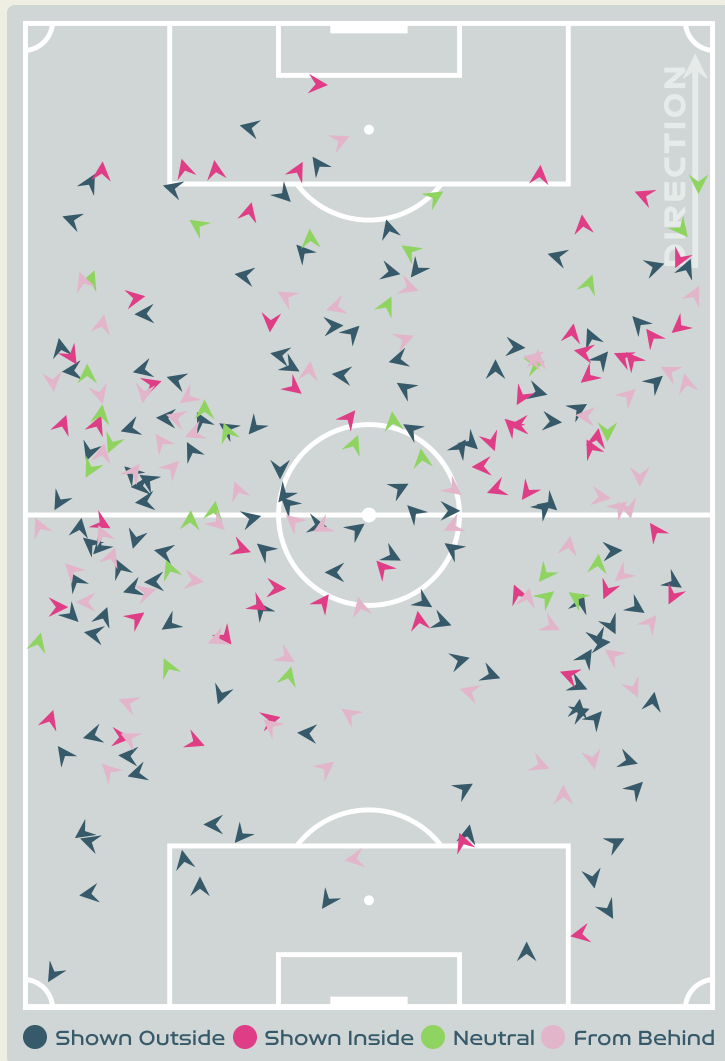


# Defensive Line Height & Team Length

Netherlands



# Defensive Pressure



267	Total Pressures	264
75	Direct Pressures	69
1.58s	Avg Pressure Duration	1.57s
76	Forced Turnovers	95
10.3s	Ball Recovery Time	7.5s
121	Pushing on into Pressing	101
268	Pushing on	231
55	Pressing Direction Inside	34
119	Pressing Direction Outside	134

**Most Direct Pressures**

**15**

**SULLIVAN Andi**  
DEFENSIVE MIDFIELD CENTRE

**Most Direct Pressures**

**13**

**VAN DE DONK Danielle**  
LEFT CENTRE MIDFIELD





# GOALKEEPING



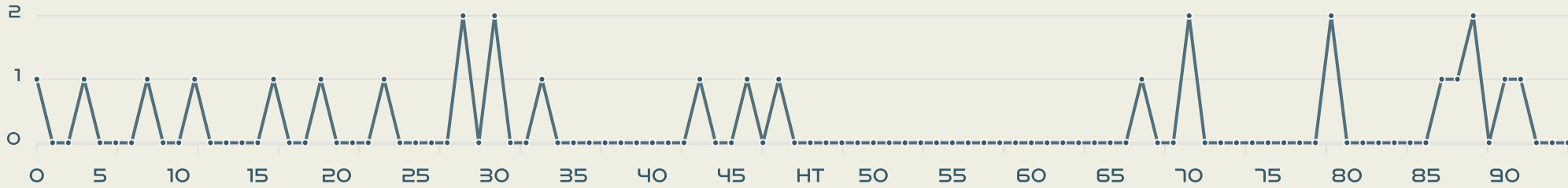
USA v Netherlands



# Goalkeeping Involvement



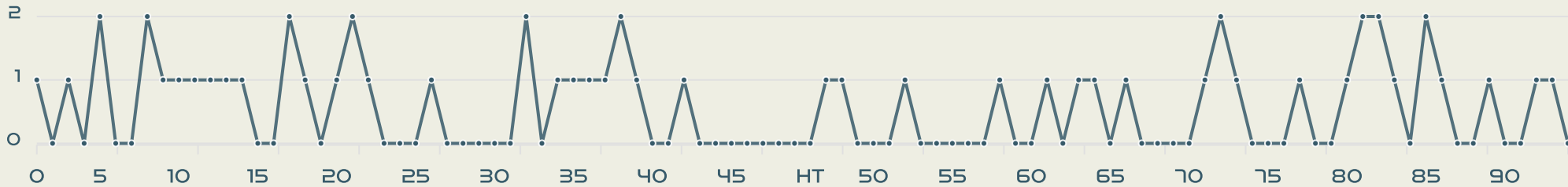
### USA GK Involvement Timeline



**27**  
Total Involvements



### Netherlands GK Involvement Timeline

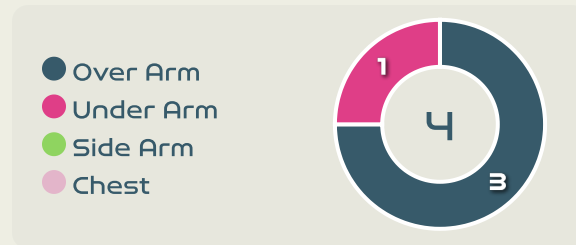
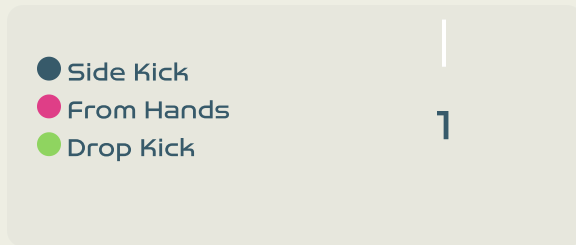
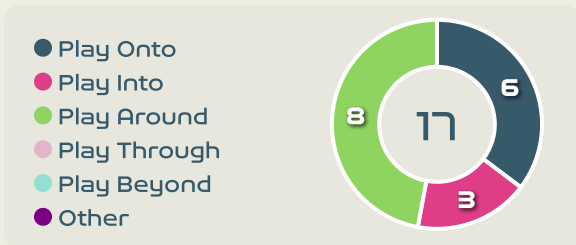
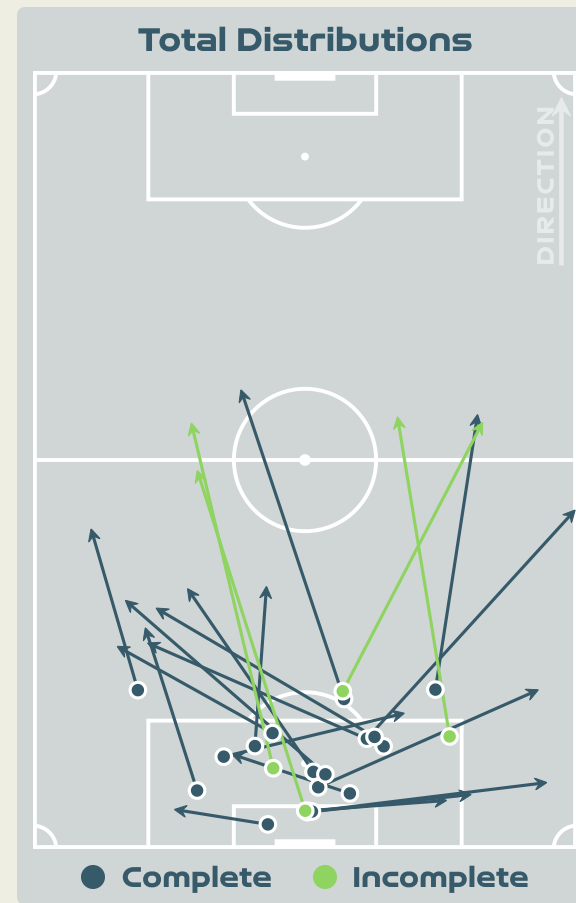
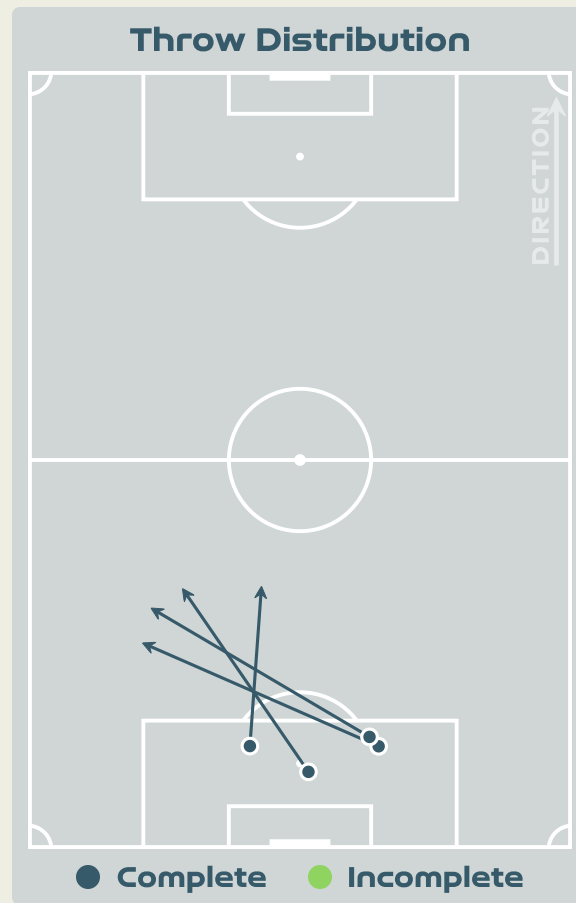
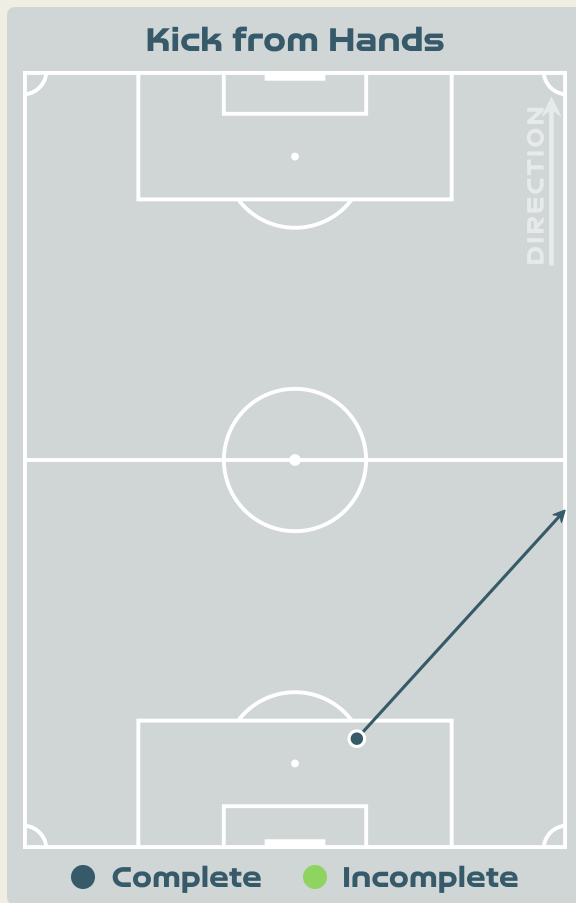
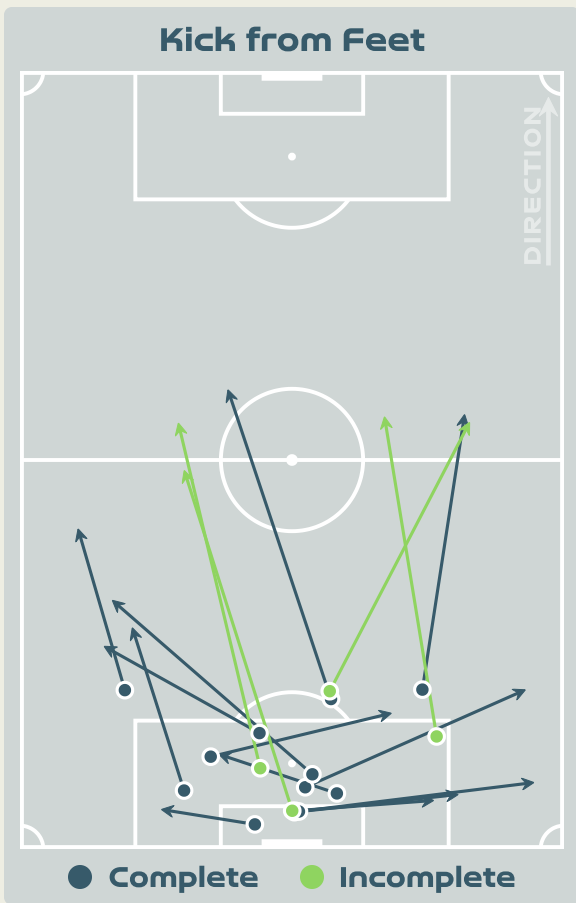


**55**  
Total Involvements

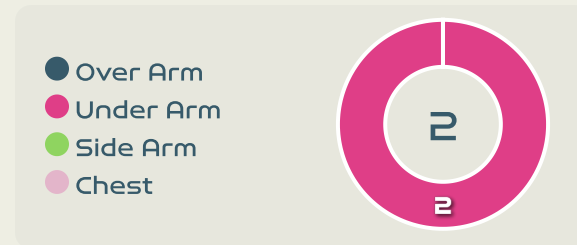
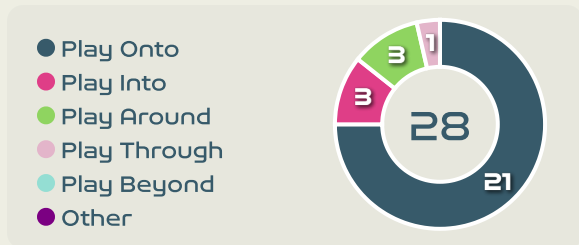
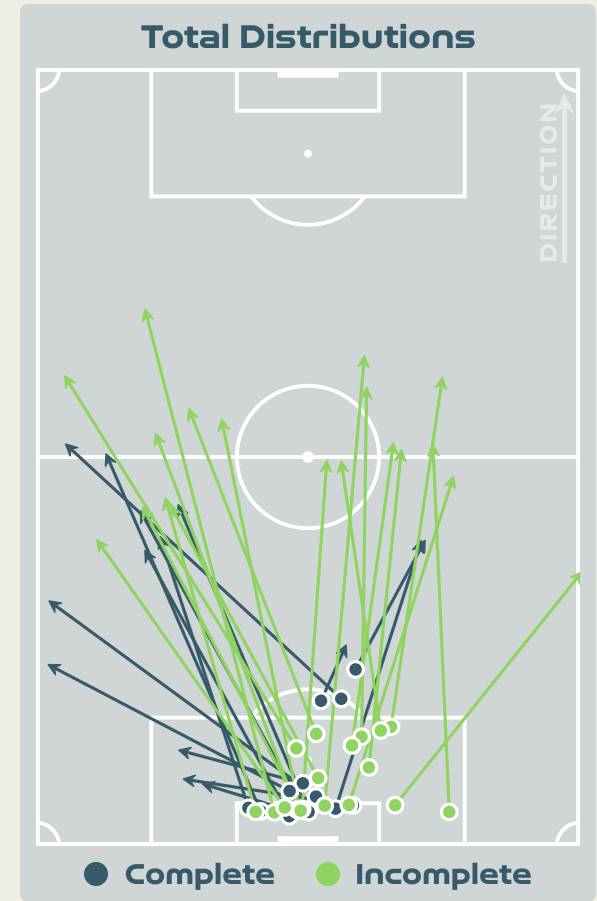
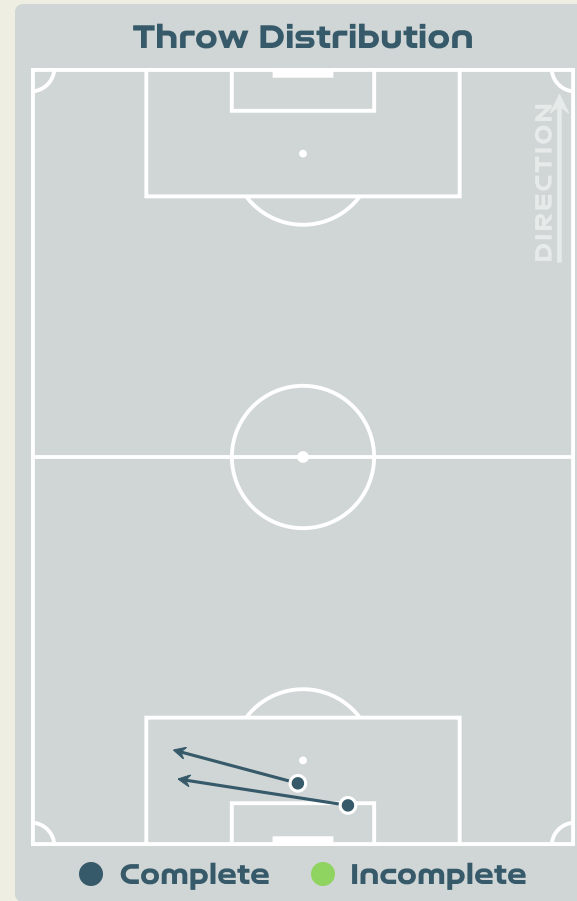
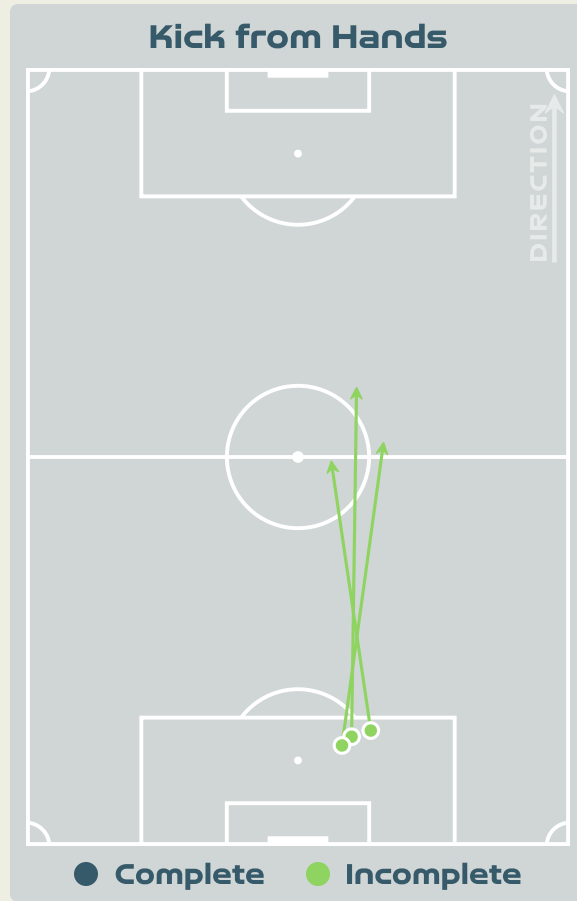
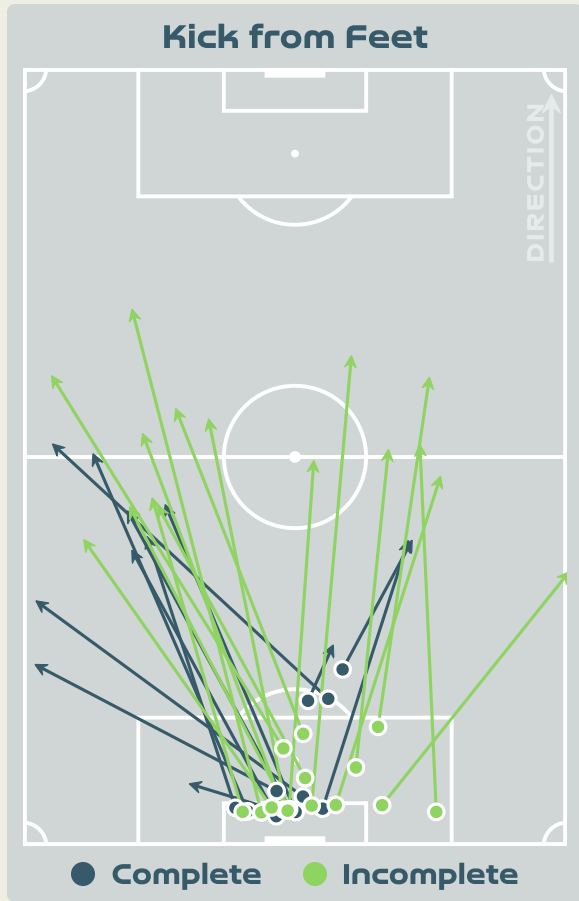




# Goalkeeping Distribution

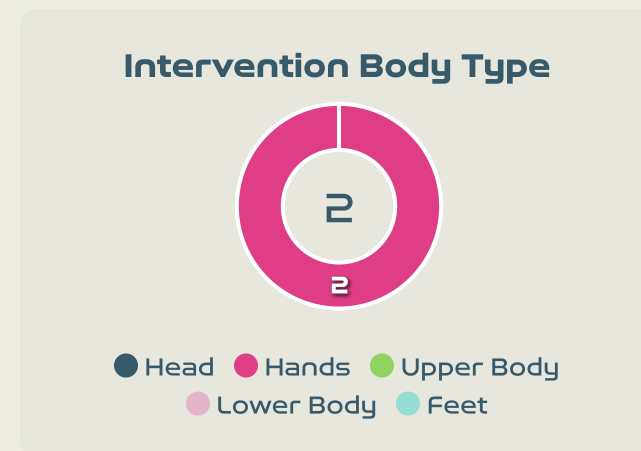
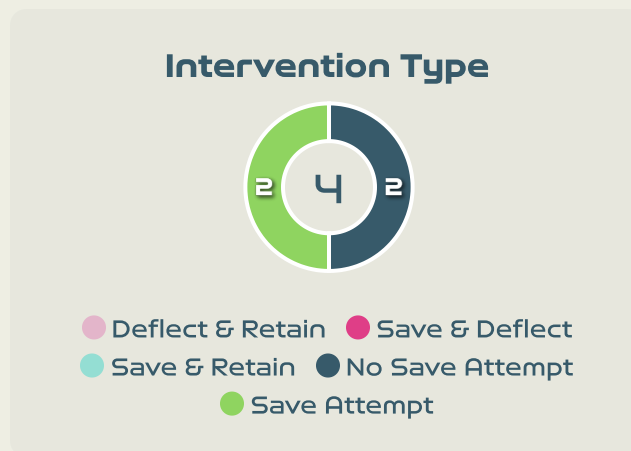
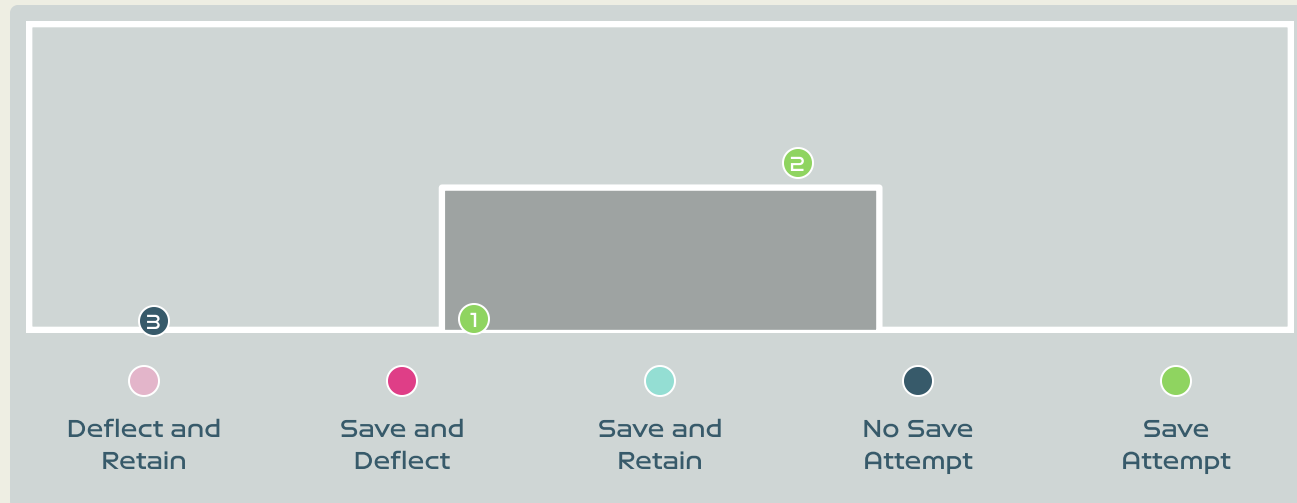
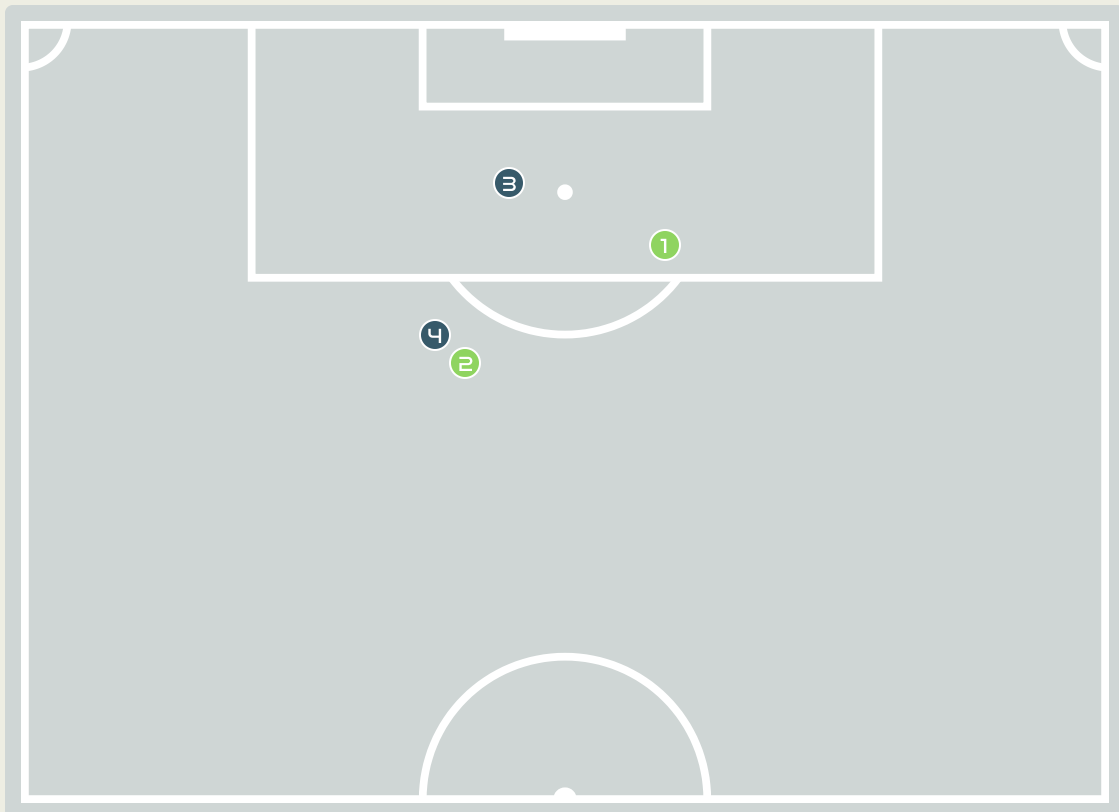


# Goalkeeping Distribution





# Goal Prevention

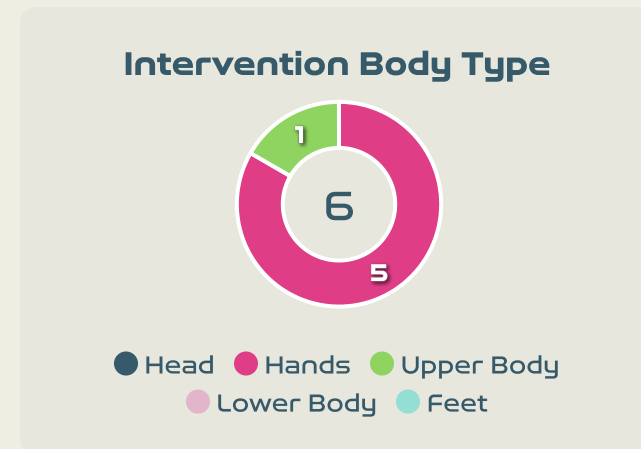
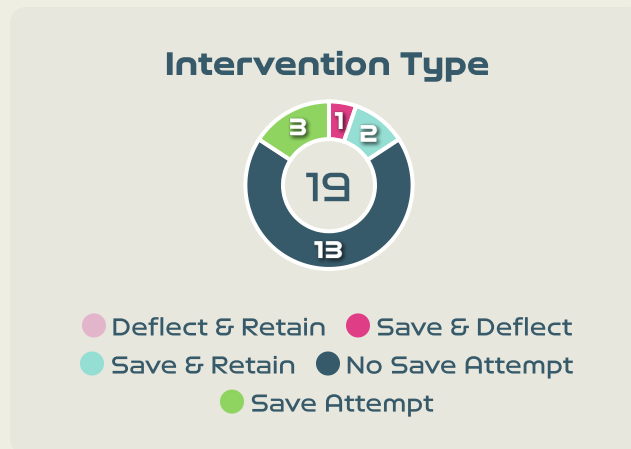
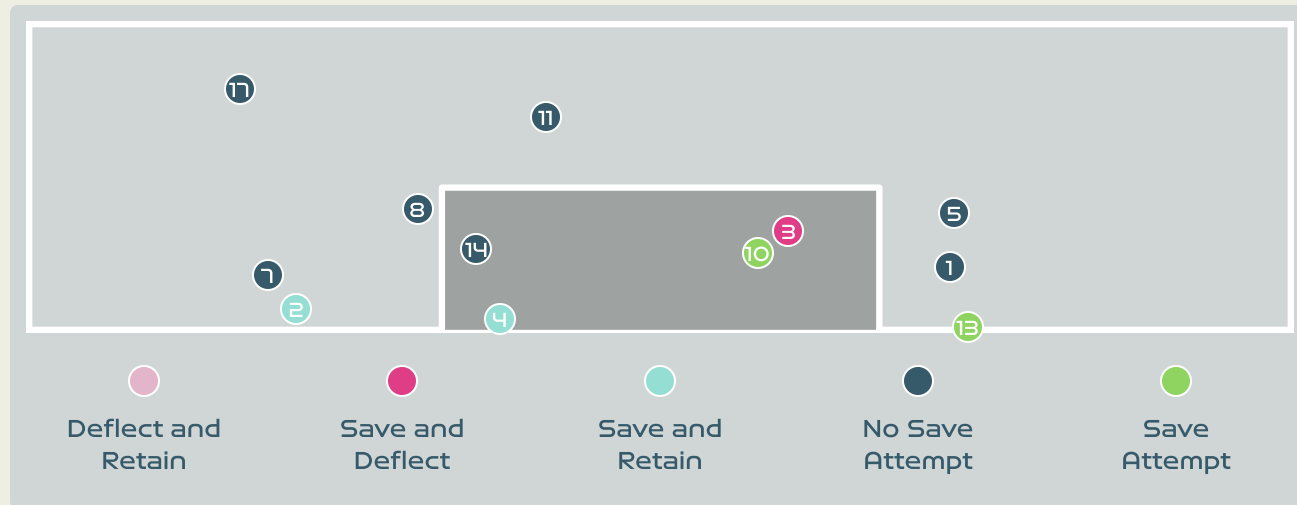
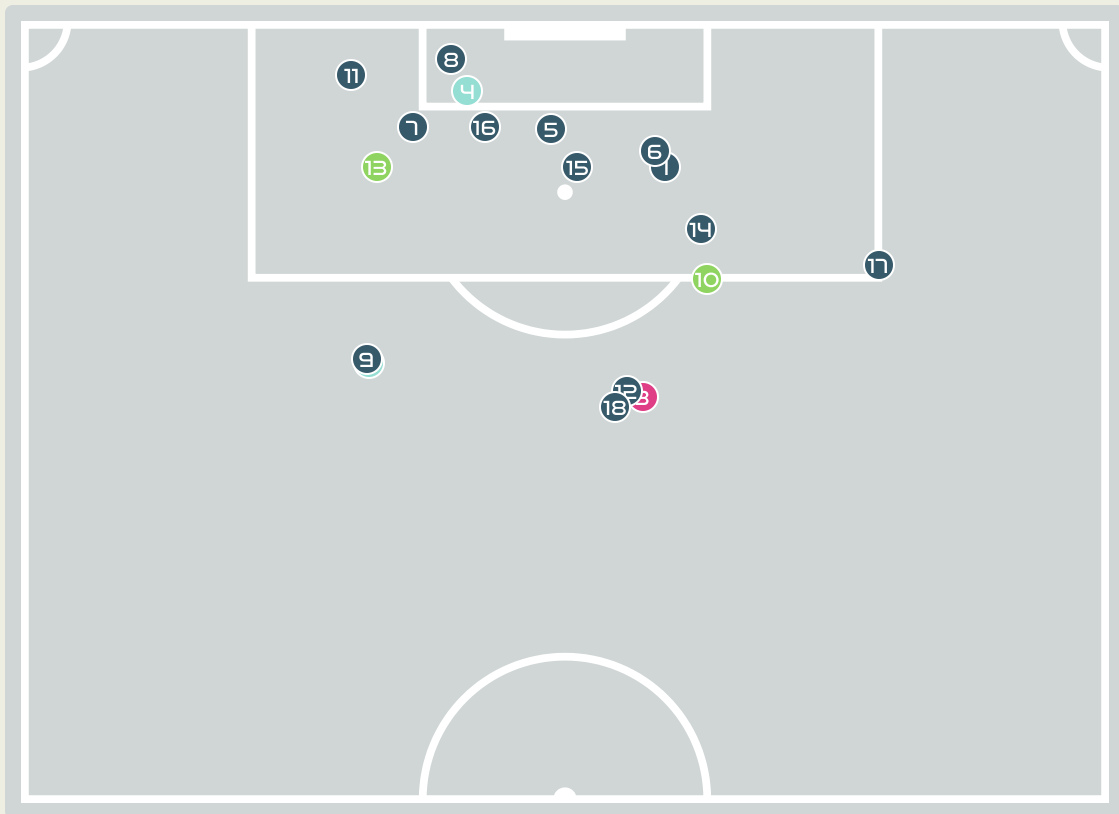


4  
Total Attempts on Goal Faced

0  
Save %

Total Attempts on Goal Faced	Total Goal Interventions	Save & Retain	Deflect & Retain	Save & Deflect	Save Attempt	No Save Attempt
4	0	0	0	0	2	2

# Goal Prevention



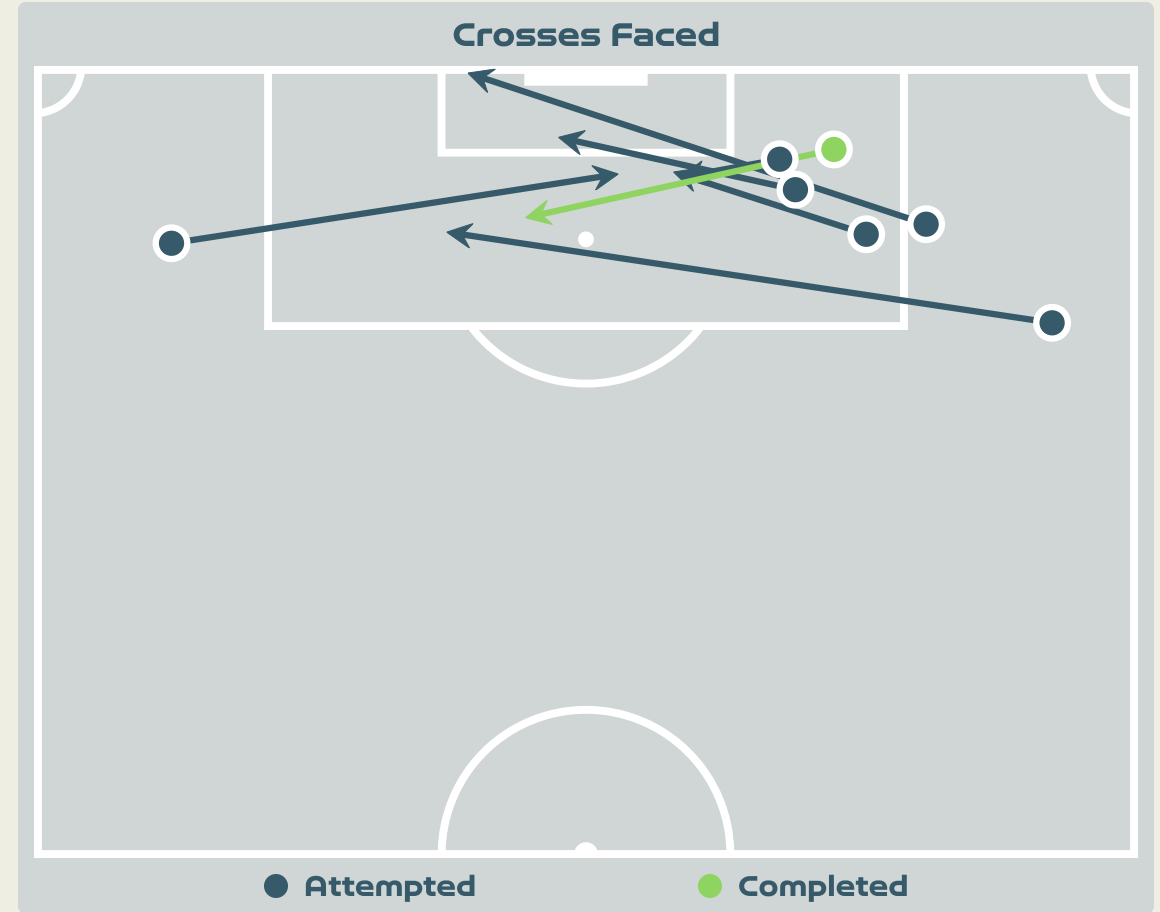
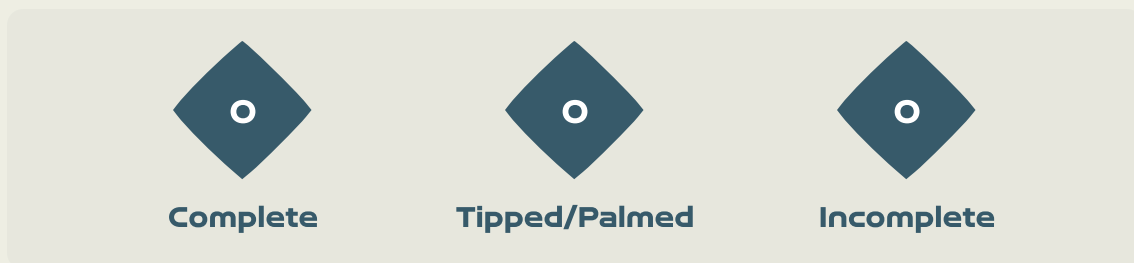
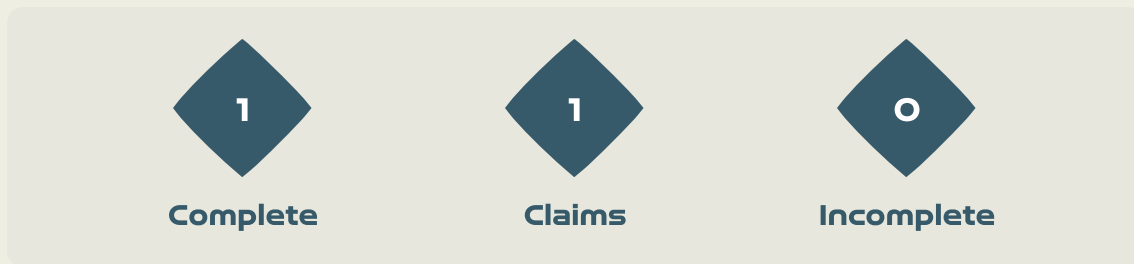
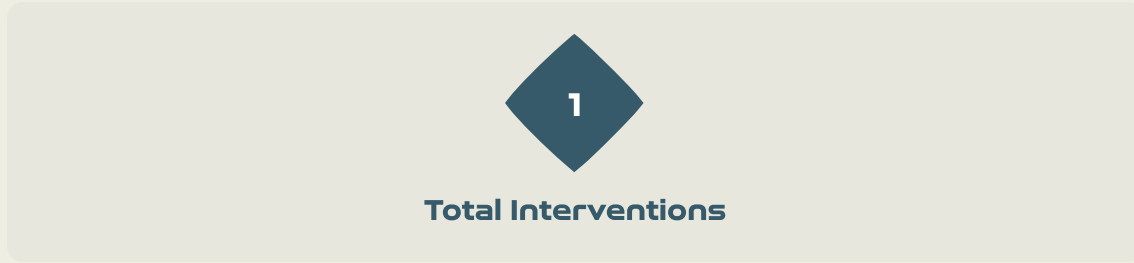
**19**  
Total Attempts on Goal Faced

**67**  
Save %

Total Attempts on Goal Faced	Total Goal Interventions	Save & Retain	Deflect & Retain	Save & Deflect	Save Attempt	No Save Attempt
19	3	2	0	1	3	13



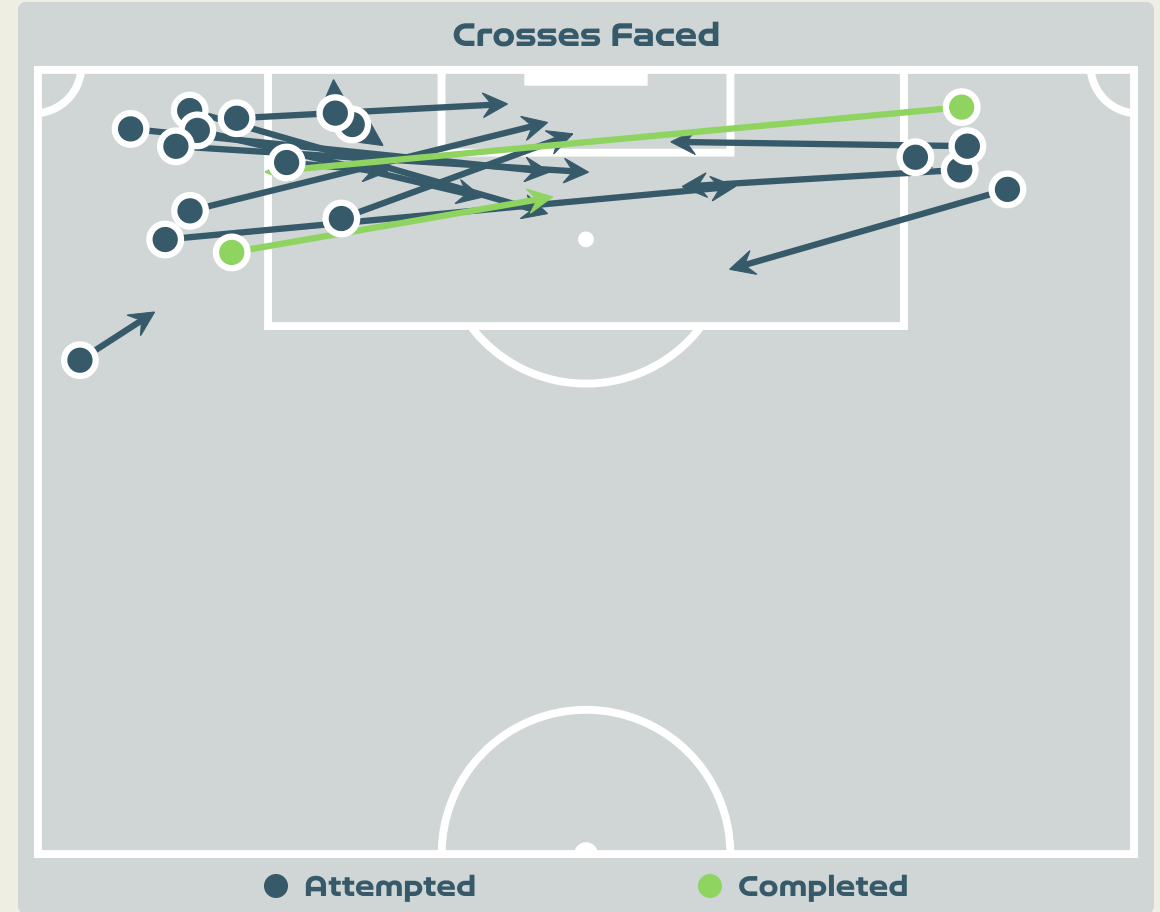
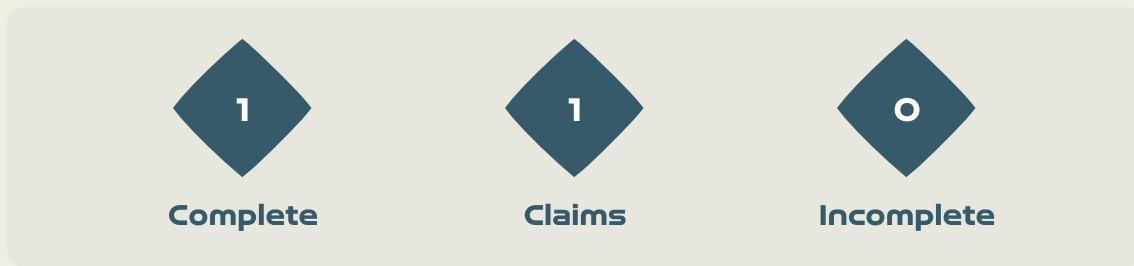
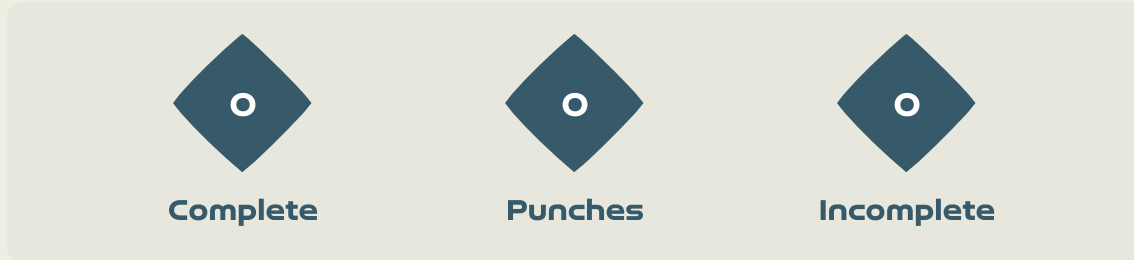
# Aerial Control



**Delivery Types Faced**

Total	In Swing	Out Swing	Driven	Lofted	Cutback	Push
9	2	2	0	3	1	1

# Aerial Control



**Delivery Types Faced**

Total	In Swing	Out Swing	Driven	Lofted	Cutback	Push
29	7	6	1	11	0	4



# SET PLAYS



USA v Netherlands





# Set Plays - Corners

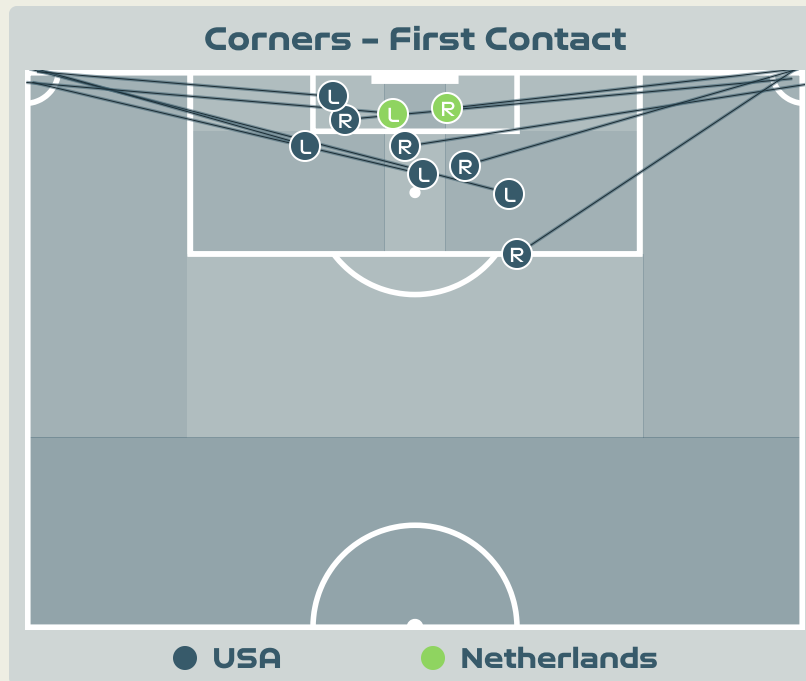
**58**  
Total Set Plays

**16**  
Total Free Kicks

**0**  
Total Penalties

**11**  
Total Corners

**31**  
Total Throw Ins



Delivery Type	From Left Side	From Right Side	Total
Direct to Area	6	5	11
Short	0	0	0
Edge of Penalty Area	0	0	0

Delivery Style	Total
Inswing	4
Outswing	1
Driven	0

Free Kicks	
Type	Total
Direct	15
Direct (on target)	0
Direct (off target)	0
Indirect	1

### First Contacts on USA Crosses

**8** By USA      **2** By Netherlands

Top 5 Player First Contacts		
Player	Team	Total
HORAN Lindsey	USA	5
ERTZ Julie	USA	1
MORGAN Alex	USA	1
RODMAN Trinity	USA	1
JANSSEN Dominique	Netherlands	1



# Set Plays - Corners

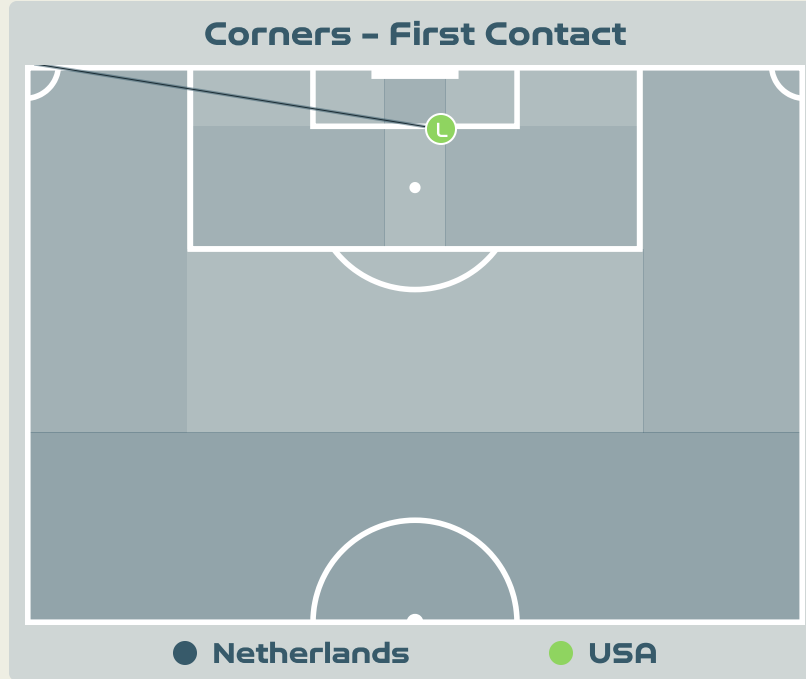
**31**  
Total Set Plays

**14**  
Total Free Kicks

**0**  
Total Penalties

**1**  
Total Corners

**16**  
Total Throw Ins



Delivery Type	From Left Side	From Right Side	Total
Direct to Area	1	0	1
Short	0	0	0
Edge of Penalty Area	0	0	0

Delivery Style	Total
Inswing	1
Outswing	0
Driven	0

Free Kicks	
Type	Total
Direct	11
Direct (on target)	0
Direct (off target)	0
Indirect	3

## First Contacts on Netherlands Crosses

**0**  
By Netherlands

**1**  
By USA

Top 5 Player First Contacts		
Player	Team	Total
HORAN Lindsey	USA	1



# INDIVIDUAL DATA IN POSSESSION



USA v Netherlands





# In Possession - Distributions

#	Player	Passes Attempted	Passes Completed	Pass Completion %	Switches of Play	Crosses Attempted	Crosses Completed	Line Breaks Attempted	Line Breaks Completed	Line Break Completion %	Ball Progressions	Take Ons	Step Ins	Attempts at Goal	Goals
1	NAEHER Alyssa	22	18	82%	0	0	0	11	7	63%	0	0	0	0	0
4	GIRMA Naomi	35	27	77%	1	0	0	15	11	73%	1	0	1	0	0
8	ERTZ Julie	34	26	76%	2	0	0	19	12	63%	0	0	0	2	0
9	DEMELO Savannah	13	8	62%	0	3	3	4	2	50%	2	2	0	1	0
10	HORAN Lindsey	38	29	76%	0	0	0	15	13	86%	2	1	1	3	1
11	SMITH Sophia	19	10	53%	0	6	1	12	8	66%	5	2	3	3	0
13	MORGAN Alex	23	17	74%	0	6	0	9	6	66%	3	0	3	2	0
17	SULLIVAN Andi	31	25	81%	0	2	2	8	6	75%	0	0	0	1	0
19	DUNN Crystal	58	44	76%	2	1	0	28	20	71%	2	2	0	1	0
20	RODMAN Trinity	28	12	43%	0	3	1	5	1	20%	2	1	1	4	0
23	FOX Emily	45	33	73%	0	1	0	18	11	61%	1	1	0	0	0
16	LAVELLE Rose	19	11	58%	0	7	3	10	6	60%	2	1	1	1	0



# In Possession - Offers & Receptions

			Offer movement types						
#	Player	Total Offers	In Front	In Between	Out to In	In to Out	In Behind	No Movement	Offers Received
1	NAEHER Alyssa	8	0	0	0	0	0	8	3
4	GIRMA Naomi	17	2	0	0	0	0	15	5
8	ERTZ Julie	12	3	1	0	0	0	8	4
9	DEMELO Savannah	30	3	19	1	1	2	4	9
10	HORAN Lindsey	46	11	16	3	4	2	10	6
11	SMITH Sophia	17	1	3	0	3	6	4	9
13	MORGAN Alex	26	0	8	1	1	16	0	4
17	SULLIVAN Andi	13	6	4	2	0	0	1	8
19	DUNN Crystal	5	0	0	0	0	1	4	2
20	RODMAN Trinity	25	1	3	1	2	11	7	10
23	FOX Emily	27	6	1	0	0	3	17	8
16	LAVELLE Rose	27	2	13	0	2	5	5	8

## In Possession - Distributions



#	Player	Passes Attempted	Passes Completed	Pass Completion %	Switches of Play	Crosses Attempted	Crosses Completed	Line Breaks Attempted	Line Breaks Completed	Line Break Completion %	Ball Progressions	Take Ons	Step Ins	Attempts at Goal	Goals
1	VAN DOMSELAAR Daphne	33	14	42%	0	0	0	20	6	30%	0	0	0	0	0
3	VAN DER GRAGT Stefanie	25	24	96%	0	0	0	4	4	100%	0	0	0	0	0
6	ROORD Jill	58	53	91%	3	1	1	8	5	62%	4	1	3	1	1
8	SPITSE Sherida	74	60	81%	2	2	0	35	25	71%	0	0	0	0	0
9	SNOEIJES Katja	10	9	90%	0	0	0	0	0	0%	0	0	0	0	0
10	VAN DE DONK Danielle	39	30	77%	0	1	0	9	6	66%	0	0	0	0	0
11	MARTENS Lieke	33	28	85%	0	1	0	6	4	66%	4	2	2	0	0
14	GROENEN Jackie	40	32	80%	0	0	0	8	4	50%	0	0	0	0	0
17	PELOVA Victoria	63	53	84%	1	4	0	10	4	40%	10	2	8	0	0
20	JANSSEN Dominique	48	36	75%	5	0	0	26	16	61%	1	0	1	1	0
22	BRUGTS Esmee	35	31	89%	1	0	0	7	6	85%	3	1	2	2	0
4	NOUWEN Aniek	16	11	69%	0	0	0	6	2	33%	0	0	0	0	0
13	JANSEN Renate	0	0	0%	0	0	0	0	0	0%	0	0	0	0	0
18	CASPARIJ Kerstin	4	1	25%	0	0	0	2	0	0%	0	0	0	0	0
21	EGURROLA Damaris	8	6	75%	0	0	0	2	1	50%	0	0	0	0	0

# In Possession - Offers & Receptions



			Offer movement types						
#	Player	Total Offers	In Front	In Between	Out to In	In to Out	In Behind	No Movement	Offers Received
1	VAN DOMSELAAR Daphne	9	0	0	0	0	0	9	1
3	VAN DER GRAGT Stefanie	0	0	0	0	0	0	0	0
6	ROORD Jill	34	14	17	2	0	1	0	19
8	SPITSE Sherida	13	4	0	0	0	0	9	10
9	SNOEIJES Katja	44	0	16	2	3	22	1	4
10	VAN DE DONK Danielle	37	3	20	2	2	8	2	8
11	MARTENS Lieke	57	6	33	1	7	5	5	18
14	GROENEN Jackie	55	35	14	0	1	1	4	13
17	PELOVA Victoria	51	9	1	0	1	10	30	21
20	JANSSEN Dominique	22	10	1	0	0	0	11	10
22	BRUGTS Esmee	34	11	2	0	0	3	18	10
4	NOUWEN Aniek	2	0	0	0	0	0	2	2
13	JANSEN Renate	1	0	0	0	0	1	0	0
18	CASPARIJ Kerstin	2	0	0	0	0	0	2	1
21	EGURROLA Damaris	9	6	3	0	0	0	0	1



# INDIVIDUAL DATA OUT OF POSSESSION



USA v Netherlands



# Out of Possession



#	Player	Tackles Made / Won	Blocks	Interceptions	Pressing Direct	Pressing Indirect	Duels Won - Aerial	Duels Won - Physical	Possession Contests won	Clearances	Loose Ball Receptions	Pushing On	Pushing On into Pressing	Possession Regains	Possession Interrupted
1	NAEHER Alyssa	0 / 0	0	0	0	0	0	0	0	0	5	0	0	6	0
4	GIRMA Naomi	0 / 0	1	1	3	2	3	0	3	9	13	13	5	5	5
8	ERTZ Julie	2 / 1	1	0	3	2	5	0	5	9	4	11	3	5	9
9	DEMELO Savannah	14 / 3	0	0	14	21	0	0	0	0	5	30	15	4	2
10	HORAN Lindsey	4 / 2	1	0	2	16	8	0	8	2	13	27	9	6	1
11	SMITH Sophia	1 / 0	2	1	5	39	2	0	3	1	9	21	16	2	3
13	MORGAN Alex	4 / 1	1	0	3	32	2	0	3	1	8	30	12	3	2
17	SULLIVAN Andi	4 / 2	2	0	15	21	2	0	2	2	5	40	19	6	1
19	DUNN Crystal	6 / 0	4	3	9	18	1	0	1	5	8	31	18	7	4
20	RODMAN Trinity	5 / 1	8	1	9	19	1	0	5	2	12	22	14	6	7
23	FOX Emily	3 / 0	2	0	4	13	1	0	1	2	13	24	7	1	5
16	LAVELLE Rose	7 / 1	0	1	8	9	0	1	2	0	10	19	3	3	2



## Out of Possession



#	Player	Tackles Made / Won	Blocks	Interceptions	Pressing Direct	Pressing Indirect	Duels Won - Aerial	Duels Won - Physical	Possession Contests won	Clearances	Loose Ball Receptions	Pushing On	Pushing On into Pressing	Possession Regains	Possession Interrupted
1	VAN DOMSELAAR Daphne	0 / 0	0	0	0	0	0	0	0	1	4	0	0	8	1
3	VAN DER GRAGT Stefanie	0 / 0	3	0	2	3	2	0	2	8	1	4	1	2	6
6	ROORD Jill	1 / 0	2	0	7	22	0	0	1	0	8	10	2	3	0
8	SPITSE Sherida	6 / 3	5	1	6	17	0	0	1	4	4	18	7	5	6
9	SNOEIJES Katja	0 / 0	0	0	4	26	3	0	3	0	2	24	17	0	0
10	VAN DE DONK Danielle	9 / 2	7	0	13	49	2	0	6	6	12	22	13	8	12
11	MARTENS Lieke	0 / 0	4	0	3	26	4	0	4	1	1	30	14	1	1
14	GROENEN Jackie	8 / 2	2	0	13	11	0	0	1	5	12	49	14	8	5
17	PELOVA Victoria	1 / 1	1	5	6	10	1	0	1	2	10	15	8	7	2
20	JANSSEN Dominique	6 / 1	5	0	5	3	2	0	3	17	7	9	4	9	16
22	BRUGTS Esmee	2 / 0	8	0	5	15	0	0	0	7	10	37	14	1	10
4	NOUWEN Aniek	1 / 0	4	1	3	3	2	0	2	9	3	5	1	7	6
13	JANSEN Renate	0 / 0	0	0	0	1	0	0	0	0	0	1	1	0	0
18	CASPARIJ Kerstin	0 / 0	1	0	0	3	1	0	1	0	1	3	2	1	0
21	EGURROLA Damaris	1 / 1	3	0	2	6	3	0	3	3	2	4	3	1	5



# INDIVIDUAL DATA PHYSICAL



USA v Netherlands



## Physical Data



#	Player	Total Distance (m)	Zone 1: 0-7 km/h (m)	Zone 2: 7-13km/h (m)	Zone 3: 13-19km/h (m)	Zone 4: 19-23km/h (m)	Zone 5: 23+ km/h (m)	High Speed Runs (Zone 4)	Sprints (Zone 5)	Top Speed (km/h)
1	NAEHER Alyssa	4128.0	3387.0	510.2	222.1	9.1	0	22.0	1.0	20.1
4	GIRMA Naomi	9515.7	3170.6	3764.4	2255.2	169.4	157.0	171.0	21.0	30.0
8	ERTZ Julie	9260.2	3159.6	3617.0	2116.9	322.3	44.4	162.0	31.0	28.6
9	DEMELO Savannah	5935.2	1471.9	2697.6	1524.2	220.8	21.4	122.0	17.0	26.5
10	HORAN Lindsey	11599.6	3372.0	4427.6	3128.4	597.4	74.2	241.0	45.0	26.2
11	SMITH Sophia	10997.1	3173.8	4206.4	2779.0	718.1	119.9	219.0	56.0	26.2
13	MORGAN Alex	9947.4	3573.1	3556.2	2124.8	499.4	193.0	201.0	46.0	27.9
17	SULLIVAN Andi	10724.2	3306.3	4191.0	2627.4	514.8	84.7	222.0	38.0	26.6
19	DUNN Crystal	10503.5	3362.2	4166.7	2395.8	473.7	105.0	202.0	45.0	28.4
20	RODMAN Trinity	11056.9	3704.1	3718.4	2595.0	686.6	352.7	234.0	66.0	30.1
23	FOX Emily	11770.3	3080.3	4712.8	3147.4	603.8	226.0	249.0	57.0	27.8
16	LAVELLE Rose	5656.0	1782.2	1839.9	1619.3	329.2	85.4	121.0	27.0	27.0

## Physical Data



#	Player	Total Distance (m)	Zone 1: 0-7 km/h (m)	Zone 2: 7-13km/h (m)	Zone 3: 13-19km/h (m)	Zone 4: 19-23km/h (m)	Zone 5: 23+ km/h (m)	High Speed Runs (Zone 4)	Sprints (Zone 5)	Top Speed (km/h)
1	VAN DOMSELAAR Daphne	4854.7	3924.1	771.4	142.2	17.0	0	21.0	2.0	22.4
3	VAN DER GRAGT Stefanie	4495.4	1849.4	1892.1	647.8	106.1	0	59.0	8.0	25.5
6	ROORD Jill	9878.2	3681.6	3866.3	1957.9	288.4	84.0	167.0	25.0	26.5
8	SPITSE Sherida	10402.6	3879.1	3326.7	2730.7	319.4	145.6	215.0	34.0	27.5
9	SNOEIJES Katja	8574.6	2581.8	2784.2	2472.9	587.4	148.3	182.0	52.0	27.6
10	VAN DE DONK Danielle	11575.6	3236.5	4383.7	2573.3	1061.5	320.6	240.0	75.0	29.1
11	MARTENS Lieke	10779.4	3804.0	3424.6	2933.1	480.8	138.0	233.0	47.0	31.8
14	GROENEN Jackie	10491.8	3751.9	4046.7	2165.5	418.6	108.1	183.0	36.0	26.4
17	PELOVA Victoria	9341.9	3031.4	3766.6	1969.3	440.9	132.7	163.0	38.0	26.5
20	JANSSEN Dominique	9604.7	3385.6	3562.4	2211.0	350.6	94.1	190.0	32.0	30.5
22	BRUGTS Esmee	10797.2	3421.6	3474.6	2828.9	823.8	248.3	235.0	59.0	28.2
4	NOUWEN Aniek	4100.3	1778.7	1283.4	803.7	165.7	69.7	82.0	16.0	27.8
13	JANSEN Renate	408.7	130.0	80.6	128.8	50.5	18.8	8.0	4.0	25.1
18	CASPARIJ Kerstin	1299.1	420.1	357.9	411.0	76.4	33.6	31.0	8.0	27.6
21	EGURROLA Damaris	2472.5	1036.7	735.3	629.5	71.2	0	55.0	4.0	25.9

