



Australia 2 - 3 Nigeria

Group B - Match 22
27 July 2023
20:00 Kick Off
Lang Park

POST MATCH SUMMARY REPORT

Match Summary - Teams



Australia



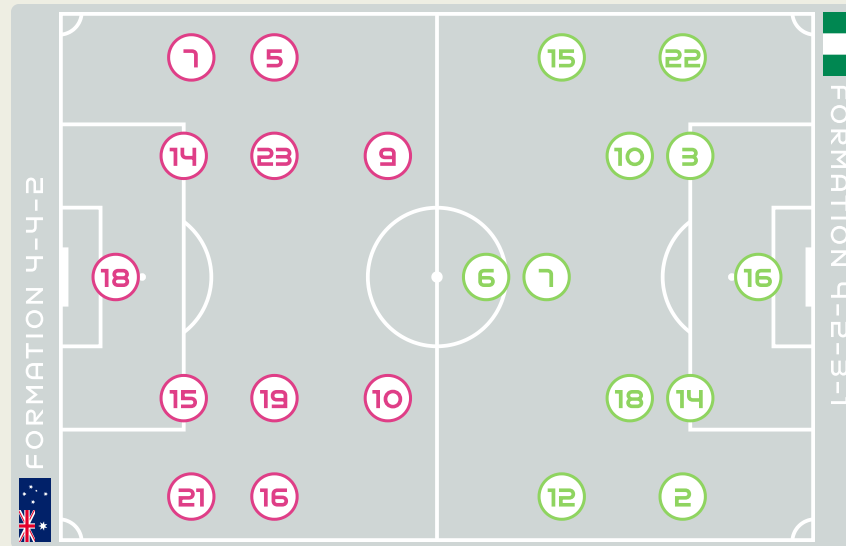
Nigeria

STARTING

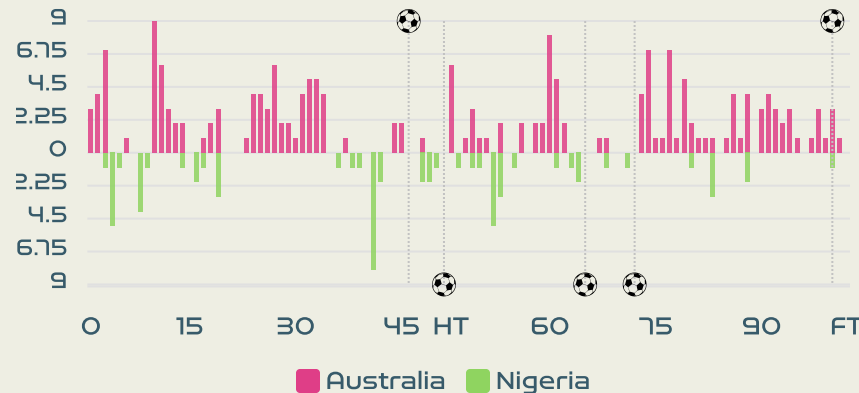
| | | | |
|----|----|-------------------|----------|
| 18 | GK | ARNOLD Mackenzie | |
| 5 | FW | VINE Cortnee | ↓ 82' |
| 7 | DF | CATLEY Steph (C) | |
| 9 | FW | FOORD Caitlin | ⚡ 48' |
| 10 | MF | VAN EGMOND Emily | ⚽ 45+1' |
| 14 | DF | KENNEDY Alanna | ⚽ 90+10' |
| 15 | DF | HUNT Clare | |
| 16 | FW | RASO Hayley | ↓ 85' |
| 19 | MF | GORRY Katrina | |
| 21 | DF | CARPENTER Ellie | |
| 23 | MF | COONEY-CROSS Kyra | |

SUBSTITUTES

| | | | |
|----|----|--------------------|-------|
| 1 | GK | WILLIAMS Lydia | |
| 12 | GK | MICAH Teagan | |
| 2 | DF | NEVIN Courtney | |
| 3 | DF | LUIK Aivi | |
| 4 | DF | POLKINGHORNE Clare | ↑ 82' |
| 6 | MF | WHEELER Clare | |
| 8 | MF | CHIDIAC Alex | ↑ 85' |
| 11 | FW | FOWLER Mary | |
| 13 | MF | YALLOP Tameka | |
| 17 | FW | SIMON Kyah | |
| 20 | FW | KERR Sam | |
| 22 | DF | GRANT Charlotte | |



Distribution in the Final Third



STARTING

| | | | | |
|-----------------------|-------------------|--------------|----|----|
| (C) NNADOZIE Chiamaka | GK | 16 | | |
| ↓ 77' | PLUMPTRE Ashleigh | DF | 2 | |
| ⚽ 65' | OHALE Osinachi | DF | 3 | |
| ↓ 63' | ONUMONU Ifeoma | FW | 6 | |
| ↓ 90' | PAYNE Toni | MF | 7 | |
| | UCHEIBE Christy | MF | 10 | |
| ↓ 64' | ⚽ 45+6' | KANU Uchenna | FW | 12 |
| | DEMEHIN Blessing | DF | 14 | |
| | AJIBADE Rasheedat | MF | 15 | |
| ↓ 76' | AYINDE Halimatu | MF | 18 | |
| ⚡ 21' | ALOZIE Michelle | DF | 22 | |

SUBSTITUTES

| | | | | | |
|-----------------|-------------------|-------|----------------|----|---|
| OLUEHI Tochukwu | GK | 1 | | | |
| BALOGUN Zainab | GK | 23 | | | |
| ↑ 77' | OGBONNA Glory | DF | 4 | | |
| ↑ 90' | EBI Onome | DF | 5 | | |
| ⚡ 73' | ⚽ 72' | ↑ 64' | OSHOALA Asisat | FW | 8 |
| | OPARANOZIE Desire | FW | 9 | | |
| | MONDAY Gift | FW | 11 | | |
| | ORDEGA Francisca | FW | 17 | | |
| ↑ 76' | ECHEGINI Jennifer | MF | 19 | | |
| | IMURAN Rofiat | DF | 20 | | |
| ↑ 63' | OKORONKWO Esther | FW | 21 | | |

Match Summary - Key Statistics



Australia



Nigeria



Possession

| Total | 51.8% | 17.7% | 30.6% | Total |
|-----------|--|-------|-------|-----------|
| 2 | Goals | | | 3 |
| 27 (7) | Attempts at Goal (On Target) | | | 11 (6) |
| 465 (383) | Total Passes (Complete) | | | 265 (172) |
| 82 % | Pass Completion % | | | 65 % |
| 82 | Completed Line Breaks | | | 52 |
| 15 | Defensive Line Breaks | | | 4 |
| 158 | Receptions in the Final Third | | | 51 |
| 37 | Crosses | | | 10 |
| 20 | Ball Progressions | | | 12 |
| 164 (47) | Defensive Pressures Applied (Direct Pressures) | | | 213 (45) |
| 62 | Forced Turnovers | | | 74 |
| 101 | Second Balls | | | 86 |
| 113 km | Total Distance Covered | | | 108.5 km |
| 5.4 km | Zone 4 - Low Speed Sprinting: 19-23km/h | | | 5.3 km |



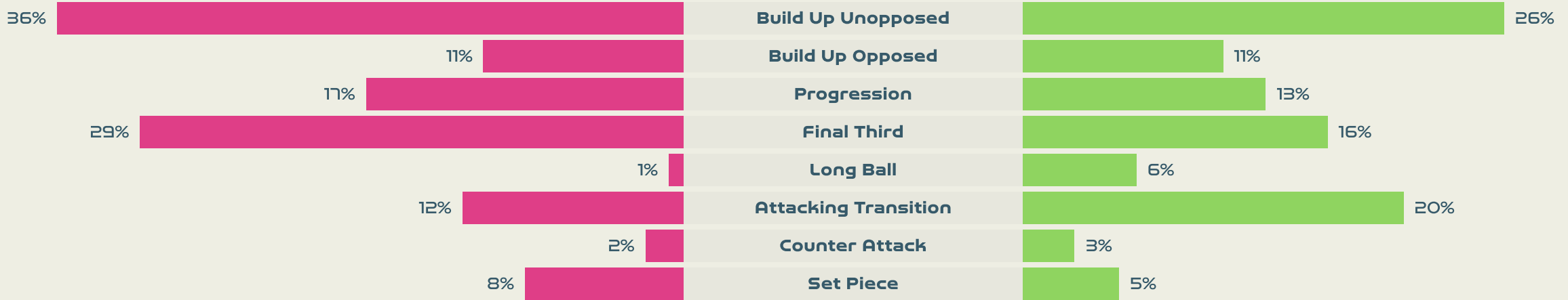
Australia

Phases of Play

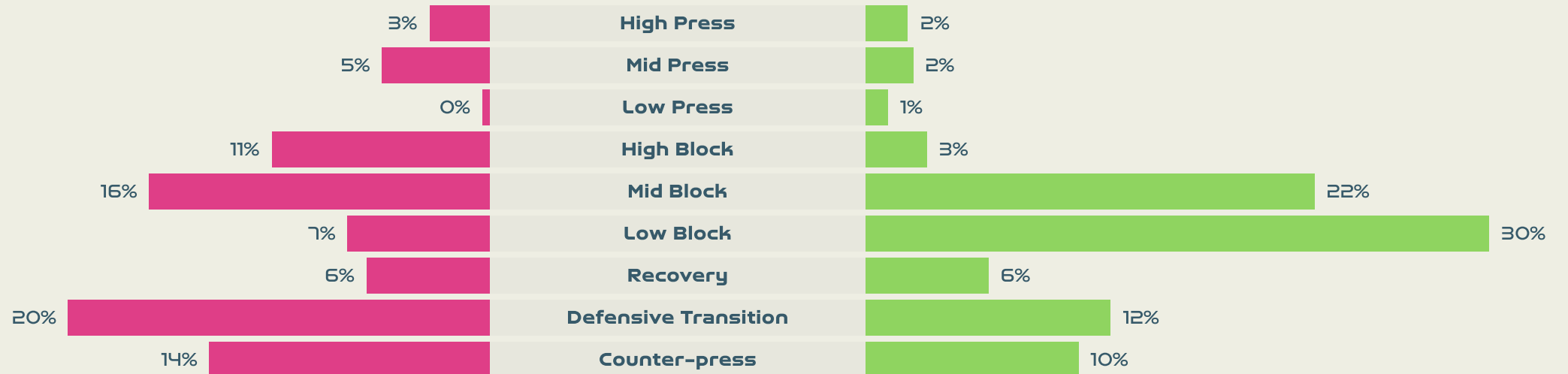
Nigeria



IN POSSESSION



OUT OF POSSESSION





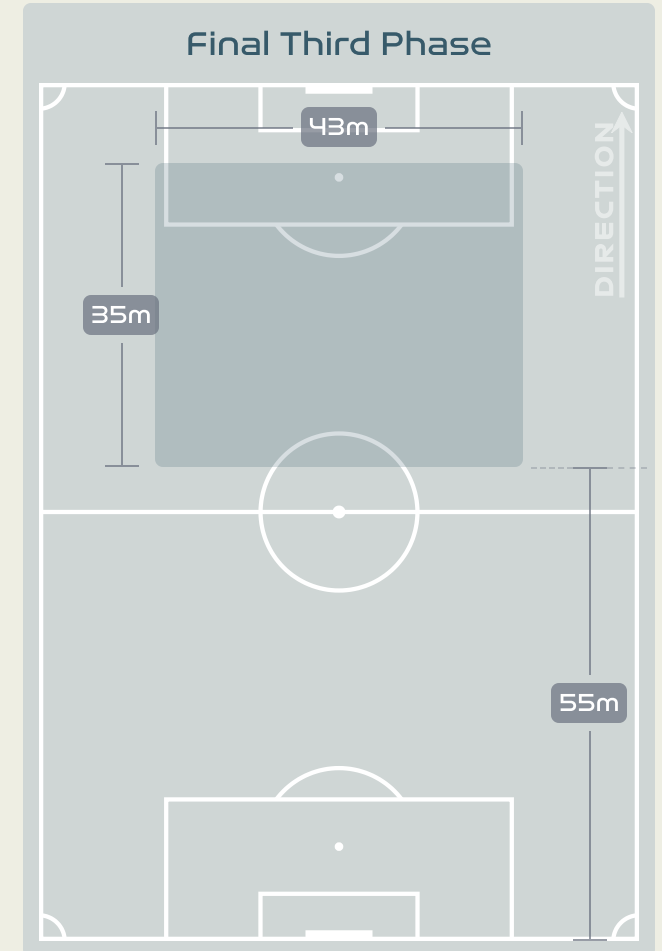
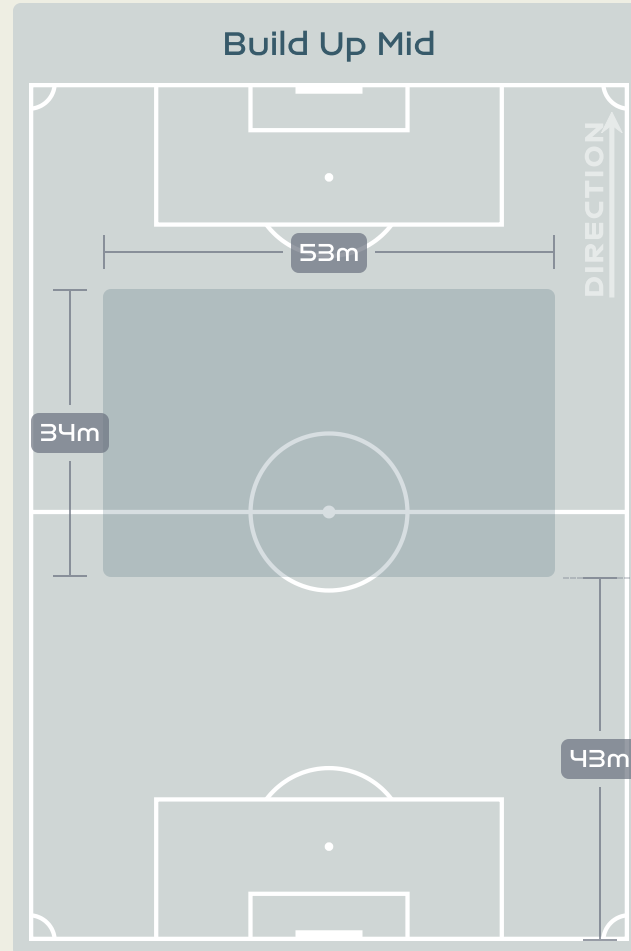
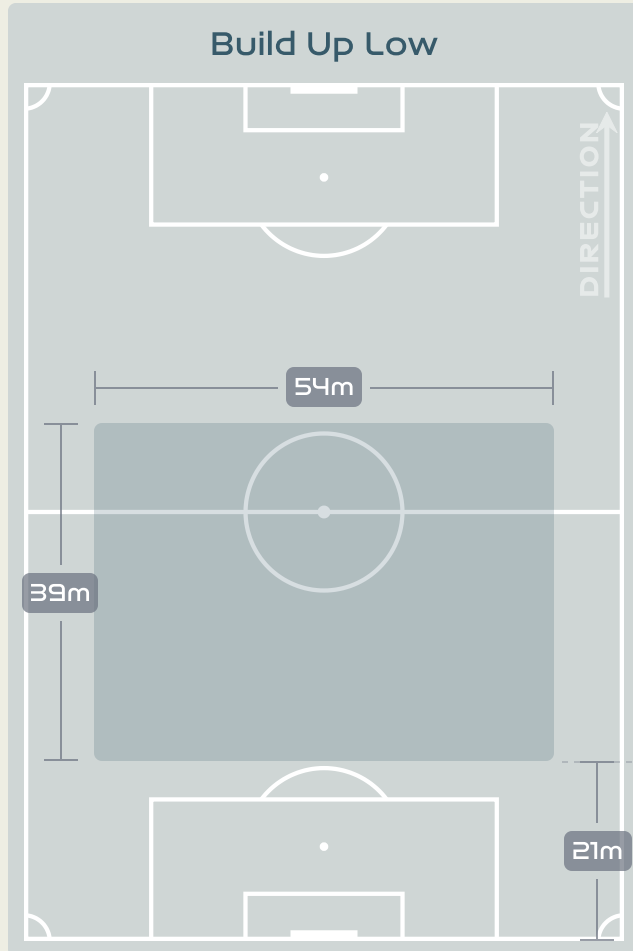
IN POSSESSION



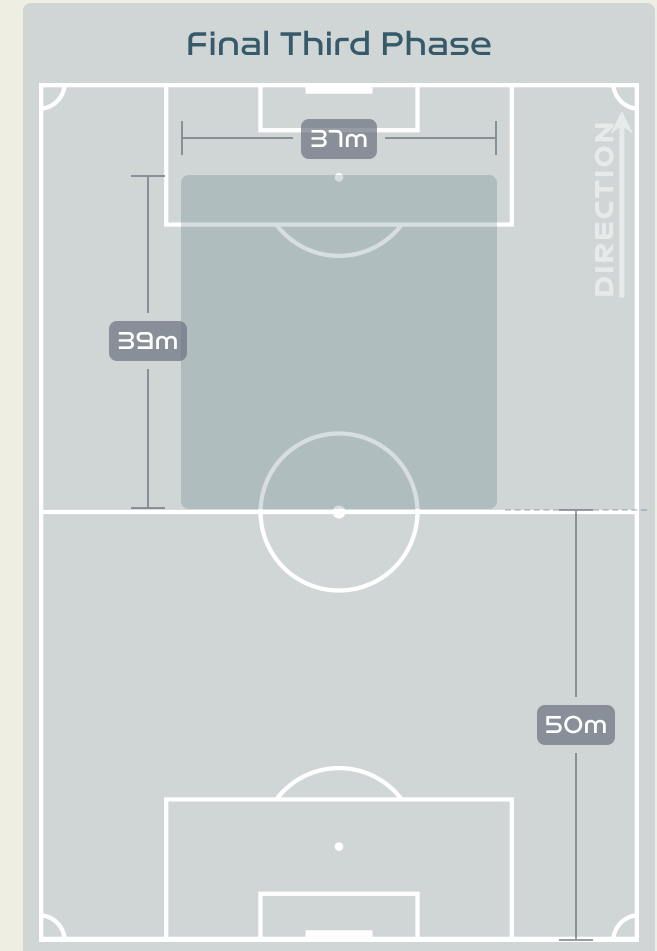
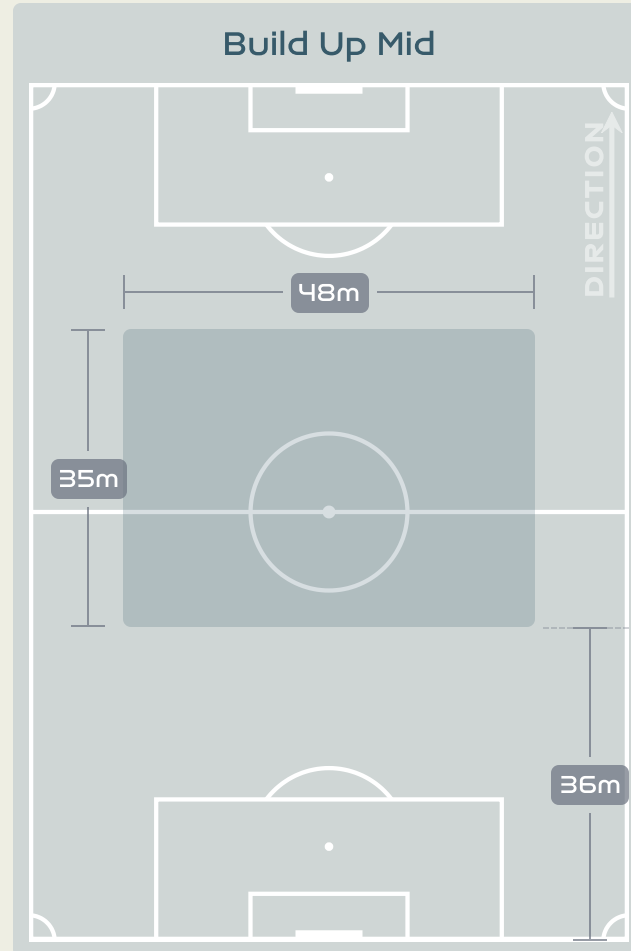
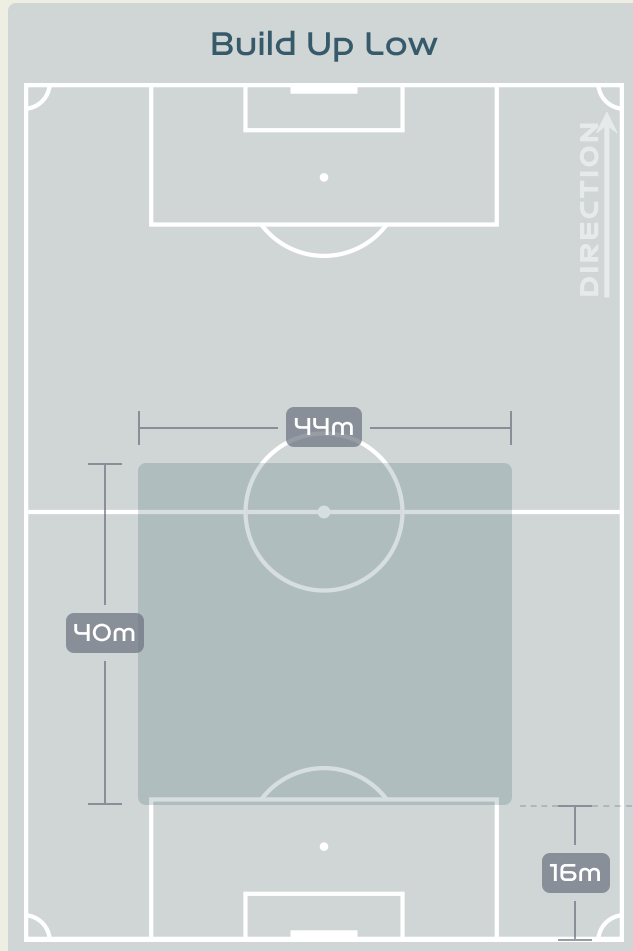
Australia v Nigeria



In Possession Line Height & Team Length



In Possession Line Height & Team Length



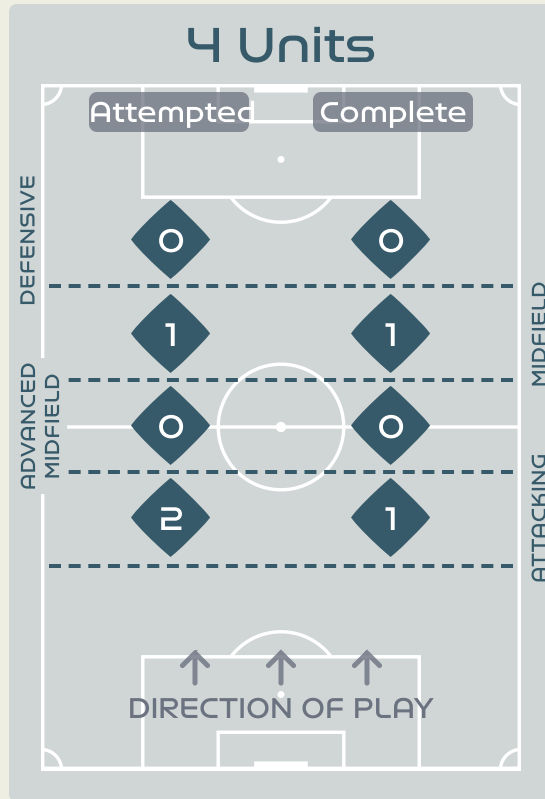
Line Breaks



Australia

Attempted Line Breaks

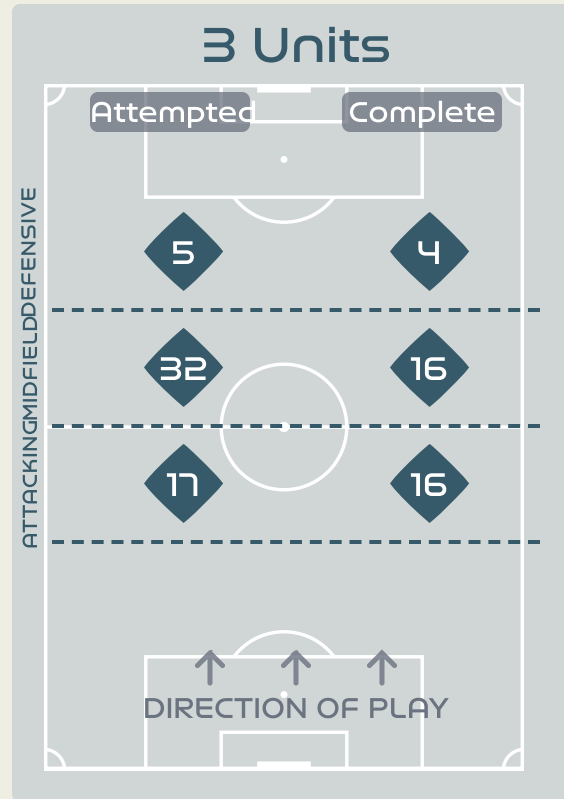
123



Attempted Line Breaks 3

Inside Shape 1

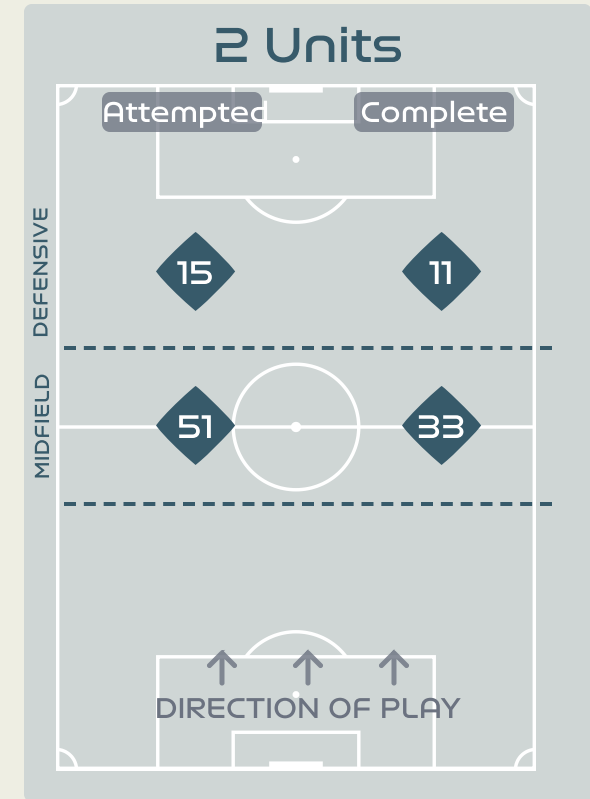
Outside Shape 2



Attempted Line Breaks 54

Inside Shape 31

Outside Shape 23



Attempted Line Breaks 66

Inside Shape 39

Outside Shape 27

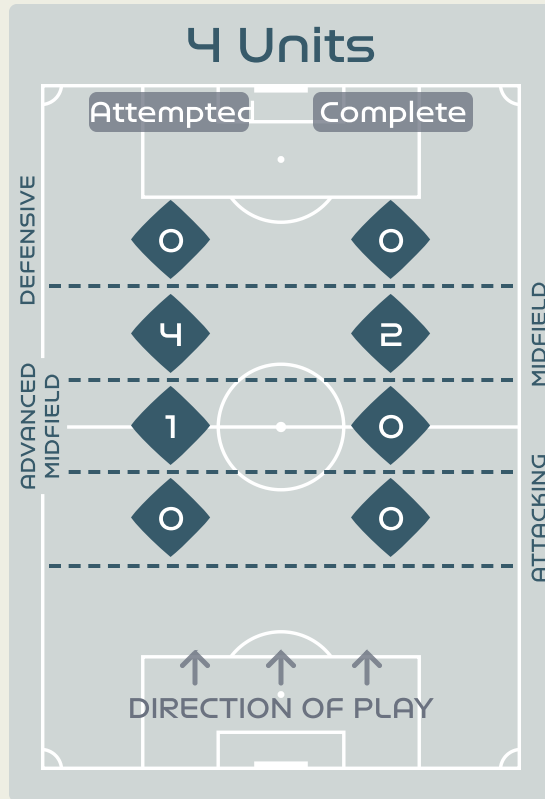
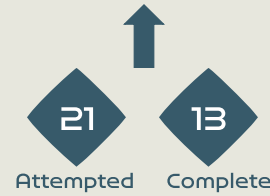
Line Breaks



Nigeria

Attempted Line Breaks

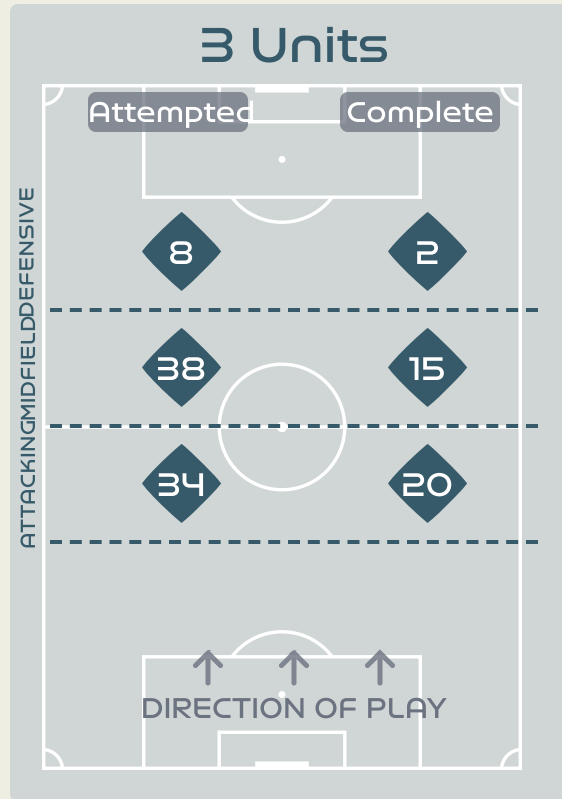
109



Attempted Line Breaks 5

Inside Shape 3

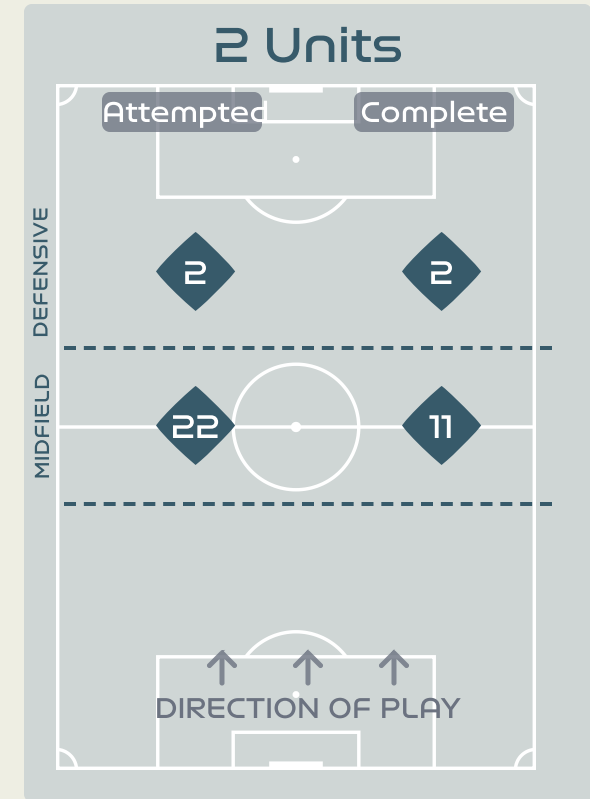
Outside Shape 2



Attempted Line Breaks 80

Inside Shape 53

Outside Shape 27



Attempted Line Breaks 24

Inside Shape 18

Outside Shape 6

Line Breaks



| | | | | | 4 Units | | | | 3 Units | | | 2 Units | | Direction | | | Distribution Type | | |
|----|--------------------|-----------------------|-----------------------|-------------------------|----------------|-------------------------|---------------|----------------|----------------|---------------|----------------|---------------|----------------|-----------|--------|------|-------------------|-------|------------------|
| # | Player | Line Breaks Attempted | Line Breaks Completed | Line Break Completion % | Attacking Line | Attacking Midfield Line | Midfield Line | Defensive Line | Attacking Line | Midfield Line | Defensive Line | Midfield Line | Defensive Line | Through | Around | Over | Pass | Cross | Ball Progression |
| 18 | ARNOLD Mackenzie | 5 | 3 | 60% | 0 | 0 | 0 | 0 | 1 | 1 | 0 | 3 | 0 | 0 | 0 | 5 | 5 | 0 | 0 |
| 5 | VINE Cortnee | 3 | 2 | 66% | 0 | 0 | 0 | 0 | 0 | 2 | 0 | 1 | 0 | 0 | 2 | 1 | 3 | 0 | 0 |
| 7 | CATLEY Steph | 12 | 6 | 50% | 0 | 0 | 0 | 0 | 1 | 7 | 0 | 4 | 0 | 0 | 6 | 6 | 12 | 0 | 0 |
| 9 | FOORD Caitlin | 6 | 3 | 50% | 0 | 0 | 0 | 0 | 0 | 1 | 0 | 2 | 3 | 2 | 2 | 2 | 3 | 2 | 1 |
| 10 | VAN EGMOND Emily | 9 | 7 | 77% | 0 | 0 | 1 | 0 | 0 | 5 | 0 | 2 | 1 | 2 | 5 | 2 | 9 | 0 | 0 |
| 14 | KENNEDY Alanna | 10 | 5 | 50% | 1 | 0 | 0 | 0 | 2 | 1 | 0 | 6 | 0 | 3 | 3 | 4 | 10 | 0 | 0 |
| 15 | HUNT Clare | 13 | 9 | 69% | 1 | 0 | 0 | 0 | 2 | 3 | 1 | 5 | 1 | 1 | 3 | 9 | 13 | 0 | 0 |
| 16 | RASO Hayley | 5 | 4 | 80% | 0 | 0 | 0 | 0 | 0 | 0 | 2 | 2 | 1 | 1 | 4 | 0 | 4 | 0 | 1 |
| 19 | GORRY Katrina | 19 | 12 | 63% | 0 | 0 | 0 | 0 | 3 | 5 | 2 | 7 | 2 | 4 | 3 | 12 | 15 | 3 | 1 |
| 21 | CARPENTER Ellie | 19 | 15 | 78% | 0 | 0 | 0 | 0 | 3 | 3 | 0 | 11 | 2 | 4 | 10 | 5 | 17 | 1 | 1 |
| 23 | COONEY-CROSS Kyra | 16 | 12 | 75% | 0 | 0 | 0 | 0 | 4 | 2 | 0 | 7 | 3 | 4 | 7 | 5 | 15 | 0 | 1 |
| 4 | POLKINGHORNE Clare | 2 | 1 | 50% | 0 | 0 | 0 | 0 | 1 | 1 | 0 | 0 | 0 | 1 | 0 | 1 | 2 | 0 | 0 |
| 8 | CHIDIAC Alex | 4 | 3 | 75% | 0 | 0 | 0 | 0 | 0 | 1 | 0 | 1 | 2 | 0 | 1 | 3 | 3 | 0 | 1 |

Passing Networks



| # | Passes From ↓ to → | ARNOLD Mackenzie | VINE Cortnee | CATLEY Steph | FOORD Caitlin | VAN EGMOND Emily | KENNEDY Alanna | HUNT Clare | RASO Hayley | GORRY Katrina | CARPENTER Ellie | COONEY-CROSS Kyra | POLKINGHORNE Clare | CHIDIAC Alex |
|----|--------------------|------------------|--------------|--------------|---------------|------------------|----------------|------------|-------------|---------------|-----------------|-------------------|--------------------|--------------|
| 18 | ARNOLD Mackenzie | | 0 | 2 | 1 | 0 | 5 | 8 | 2 | 2 | 1 | 2 | 1 | 0 |
| 5 | VINE Cortnee | 0 | | 3 | 2 | 1 | 1 | 0 | 0 | 7 | 0 | 2 | 0 | 0 |
| 7 | CATLEY Steph | 1 | 4 | | 4 | 0 | 1 | 0 | 0 | 6 | 0 | 6 | 1 | 0 |
| 9 | FOORD Caitlin | 0 | 0 | 1 | | 3 | 0 | 0 | 0 | 2 | 2 | 0 | 0 | 0 |
| 10 | VAN EGMOND Emily | 0 | 0 | 1 | 2 | | 0 | 2 | 5 | 5 | 6 | 2 | 0 | 0 |
| 14 | KENNEDY Alanna | 3 | 3 | 5 | 2 | 1 | | 14 | 1 | 10 | 3 | 8 | 0 | 1 |
| 15 | HUNT Clare | 1 | 1 | 1 | 0 | 3 | 19 | | 4 | 4 | 15 | 2 | 3 | 1 |
| 16 | RASO Hayley | 0 | 0 | 0 | 1 | 1 | 0 | 1 | | 3 | 4 | 6 | 0 | 0 |
| 19 | GORRY Katrina | 3 | 1 | 6 | 5 | 5 | 7 | 6 | 0 | | 8 | 13 | 0 | 0 |
| 21 | CARPENTER Ellie | 1 | 0 | 0 | 1 | 6 | 1 | 7 | 9 | 5 | | 2 | 0 | 3 |
| 23 | COONEY-CROSS Kyra | 3 | 3 | 4 | 0 | 1 | 10 | 8 | 2 | 10 | 7 | | 0 | 2 |
| 4 | POLKINGHORNE Clare | 0 | 0 | 4 | 0 | 0 | 0 | 1 | 0 | 1 | 0 | 0 | | 0 |
| 8 | CHIDIAC Alex | 0 | 0 | 0 | 1 | 2 | 0 | 0 | 0 | 0 | 1 | 2 | 0 | |

| Top 5 Player to Player Passers | | |
|--------------------------------|-------------------|------------------------|
| Player | Passed To | % of Total Team Passes |
| HUNT Clare | KENNEDY Alanna | 5.2% |
| HUNT Clare | CARPENTER Ellie | 4.1% |
| KENNEDY Alanna | HUNT Clare | 3.8% |
| GORRY Katrina | COONEY-CROSS Kyra | 3.6% |
| KENNEDY Alanna | GORRY Katrina | 2.7% |

Passing Networks

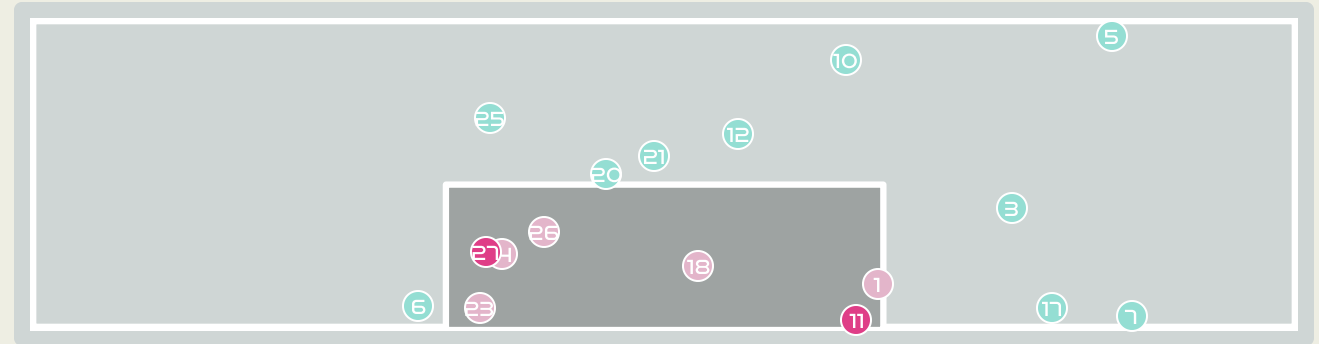
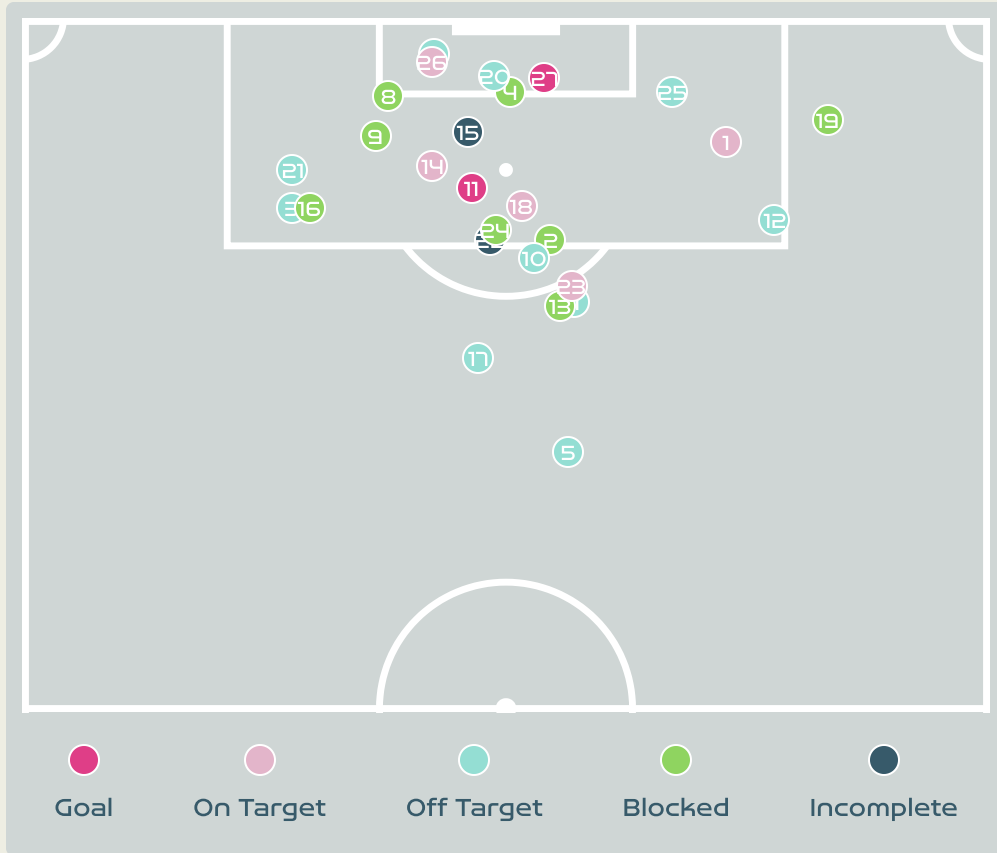







| # | Passes From ↓ to → | NNADOZIE Chiamaka | PLUMPTRE Ashleigh | OHALE Osinachi | ONUMONU Ifeoma | PAYNE Toni | UCHEIBE Christy | KANU Uchenna | DEMEHIN Blessing | AJIBADE Rasheedat | AYINDE Halimatu | ALOZIE Michelle | OGBONNA Glory | EBI Onome | OSHOALA Asisat | ECHEGINI Jennifer | OKORONKWO Esther |
|----|--------------------|-------------------|-------------------|----------------|----------------|------------|-----------------|--------------|------------------|-------------------|-----------------|-----------------|---------------|-----------|----------------|-------------------|------------------|
| 16 | NNADOZIE Chiamaka | | 0 | 3 | 0 | 0 | 0 | 1 | 4 | 1 | 2 | 0 | 0 | 0 | 2 | 0 | 2 |
| 2 | PLUMPTRE Ashleigh | 0 | | 0 | 1 | 0 | 1 | 2 | 6 | 3 | 4 | 0 | 0 | 0 | 0 | 0 | 0 |
| 3 | OHALE Osinachi | 3 | 0 | | 0 | 1 | 0 | 0 | 5 | 1 | 2 | 4 | 1 | 0 | 0 | 0 | 0 |
| 6 | ONUMONU Ifeoma | 0 | 0 | 0 | | 2 | 0 | 1 | 1 | 0 | 1 | 1 | 0 | 0 | 0 | 0 | 0 |
| 7 | PAYNE Toni | 0 | 1 | 1 | 0 | | 3 | 3 | 0 | 2 | 2 | 2 | 0 | 0 | 1 | 0 | 0 |
| 10 | UCHEIBE Christy | 0 | 1 | 1 | 4 | 2 | | 0 | 0 | 1 | 2 | 1 | 0 | 0 | 2 | 0 | 0 |
| 12 | KANU Uchenna | 0 | 1 | 0 | 0 | 2 | 1 | | 1 | 4 | 1 | 0 | 0 | 0 | 0 | 0 | 0 |
| 14 | DEMEHIN Blessing | 5 | 5 | 5 | 0 | 1 | 0 | 0 | | 2 | 1 | 2 | 0 | 0 | 0 | 0 | 0 |
| 15 | AJIBADE Rasheedat | 0 | 2 | 0 | 0 | 0 | 0 | 1 | 0 | | 2 | 1 | 0 | 0 | 0 | 0 | 1 |
| 18 | AYINDE Halimatu | 0 | 4 | 4 | 0 | 2 | 1 | 3 | 2 | 4 | | 2 | 0 | 0 | 0 | 0 | 0 |
| 22 | ALOZIE Michelle | 0 | 0 | 2 | 0 | 0 | 0 | 1 | 0 | 2 | 1 | | 0 | 0 | 0 | 0 | 0 |
| 4 | OGBONNA Glory | 0 | 0 | 0 | 0 | 0 | 0 | 0 | 0 | 0 | 0 | 0 | | 0 | 0 | 0 | 0 |
| 5 | EBI Onome | 0 | 0 | 0 | 0 | 0 | 0 | 0 | 0 | 0 | 0 | 0 | 0 | | 0 | 0 | 0 |
| 8 | OSHOALA Asisat | 0 | 0 | 0 | 0 | 1 | 1 | 0 | 0 | 2 | 0 | 0 | 0 | 0 | | 0 | 0 |
| 19 | ECHEGINI Jennifer | 0 | 0 | 0 | 0 | 0 | 0 | 0 | 0 | 0 | 0 | 0 | 0 | 0 | 0 | | 0 |
| 21 | OKORONKWO Esther | 0 | 0 | 2 | 0 | 0 | 0 | 0 | 0 | 0 | 0 | 1 | 1 | 0 | 0 | 0 | |

Top 5 Player to Player Passers

| Player | Passed To | % of Total Team Passes |
|-------------------|-------------------|------------------------|
| PLUMPTRE Ashleigh | DEMEHIN Blessing | 3.8% |
| OHALE Osinachi | DEMEHIN Blessing | 3.2% |
| DEMEHIN Blessing | OHALE Osinachi | 3.2% |
| DEMEHIN Blessing | NNADOZIE Chiamaka | 3.2% |
| DEMEHIN Blessing | PLUMPTRE Ashleigh | 3.2% |

Attempts at Goal



| Key | Outcome | Shots |
|--|------------|-------|
|  | Goals | 2 |
|  | On Target | 5 |
|  | Off Target | 10 |
|  | Blocked | 8 |
|  | Incomplete | 2 |

Attempts at Goal



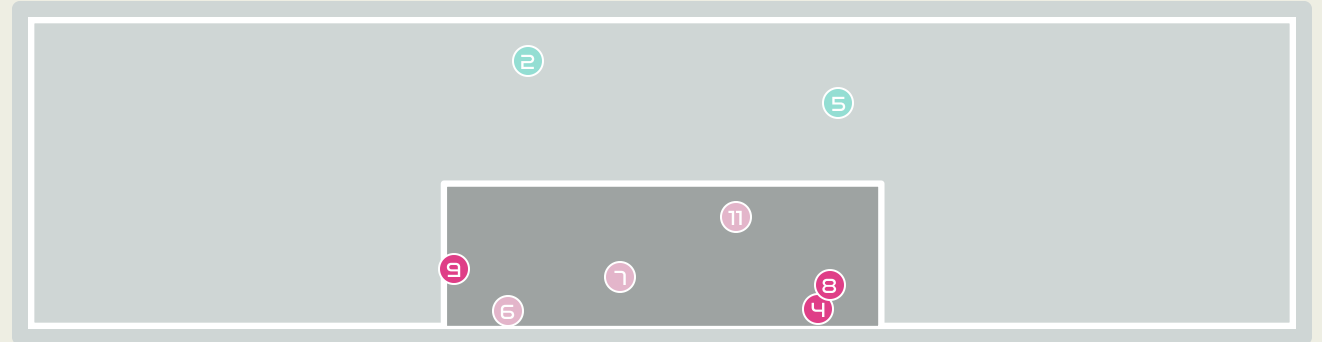
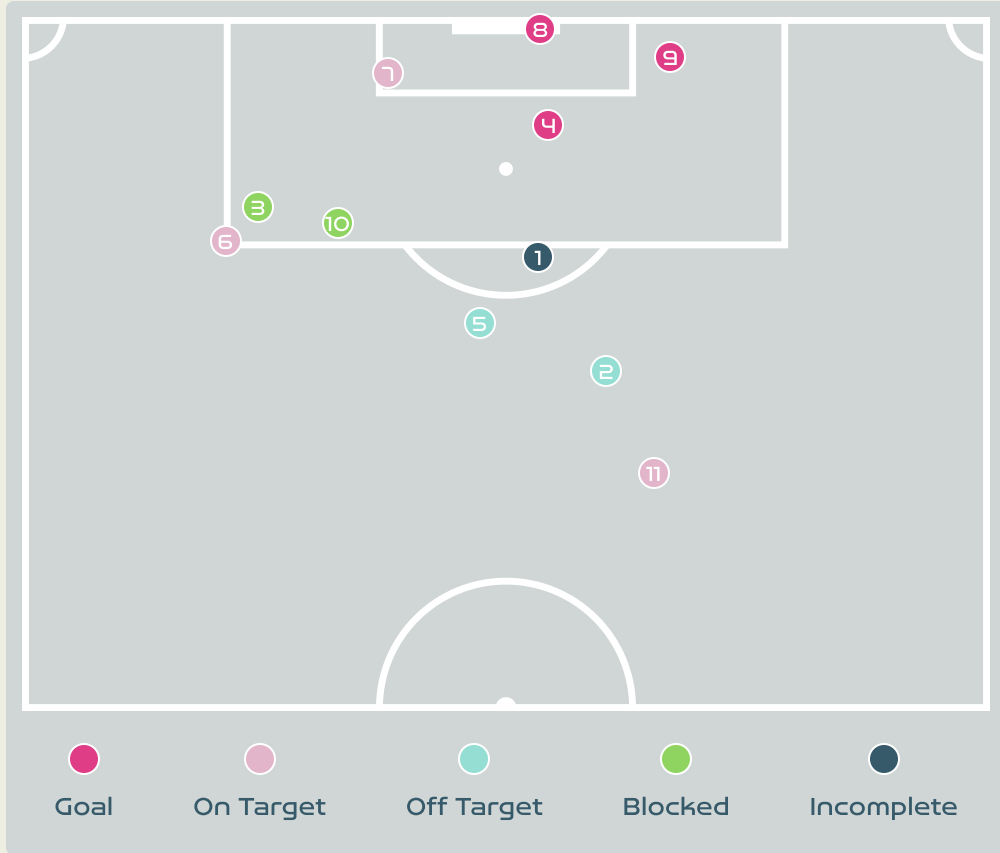
| Time | Player | Outcome | Body Part | Delivery Type |
|------|----------------------|-----------------------------------|------------|---------------|
| 12 | 7 CATLEY Steph | On Target - Saved | Left Foot | Pass |
| 13 | 10 VAN EGMOND Emily | Incomplete - Blocked | Right Foot | Loose Ball |
| 18 | 9 FOORD Caitlin | Off Target | Right Foot | Pass |
| 28 | 14 KENNEDY Alanna | Incomplete - Blocked | Head | Cross |
| 28 | 21 CARPENTER Ellie | Off Target | Right Foot | Loose Ball |
| 30 | 16 RASO Hayley | Off Target | Right Foot | Loose Ball |
| 34 | 7 CATLEY Steph | Off Target | Left Foot | Loose Ball |
| 37 | 9 FOORD Caitlin | Incomplete - Blocked | Left Foot | Loose Ball |
| 37 | 9 FOORD Caitlin | Incomplete - Blocked | Right Foot | Other |
| 37 | 10 VAN EGMOND Emily | Off Target | Right Foot | Loose Ball |
| 45 | 10 VAN EGMOND Emily | On Target - Goal | Right Foot | Cross |
| 46 | 19 GORRY Katrina | Off Target | Right Foot | Loose Ball |
| 49 | 10 VAN EGMOND Emily | Incomplete - Blocked | Right Foot | Pass |
| 60 | 5 VINE Cortnee | On Target - Saved | Head | Cross |
| 61 | 9 FOORD Caitlin | Incomplete - Player On Ball Error | Head | Cross |
| 62 | 19 GORRY Katrina | Incomplete - Blocked | Right Foot | Pass |
| 62 | 23 COONEY-CROSS Kyra | Off Target | Left Foot | Pass |








Attempts at Goal

| Time | Player | Outcome | Body Part | Delivery Type |
|------|---------------------|-----------------------------------|------------|------------------|
| 67 | 5 VINE Cortnee | On Target - Saved | Head | Cross |
| 70 | 7 CATLEY Steph | Incomplete - Blocked | Left Foot | Freekick |
| 77 | 14 KENNEDY Alanna | Off Target | Head | Corner |
| 79 | 9 FOORD Caitlin | Off Target | Right Foot | Ball Progression |
| 81 | 10 VAN EGMOND Emily | Incomplete - Player On Ball Error | Right Foot | Loose Ball |
| 86 | 8 CHIDIAC Alex | On Target - Saved | Left Foot | Pass |
| 90 | 10 VAN EGMOND Emily | Incomplete - Blocked | Right Foot | Pass |
| 91 | 8 CHIDIAC Alex | Off Target | Right Foot | Ball Progression |
| 94 | 9 FOORD Caitlin | On Target - Saved | Head | Pass |
| 99 | 14 KENNEDY Alanna | On Target - Goal | Head | Corner |

Attempts at Goal



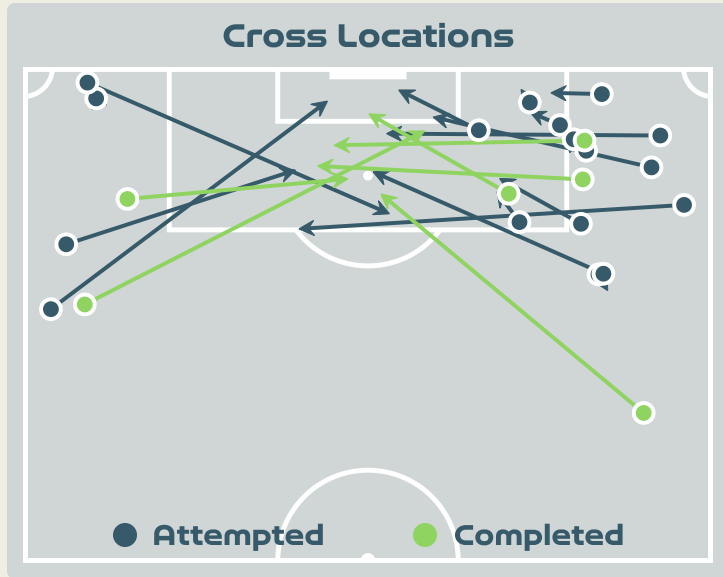
| Key | Outcome | Shots |
|--|------------|-------|
|  | Goals | 3 |
|  | On Target | 3 |
|  | Off Target | 2 |
|  | Blocked | 2 |
|  | Incomplete | 1 |

Attempts at Goal

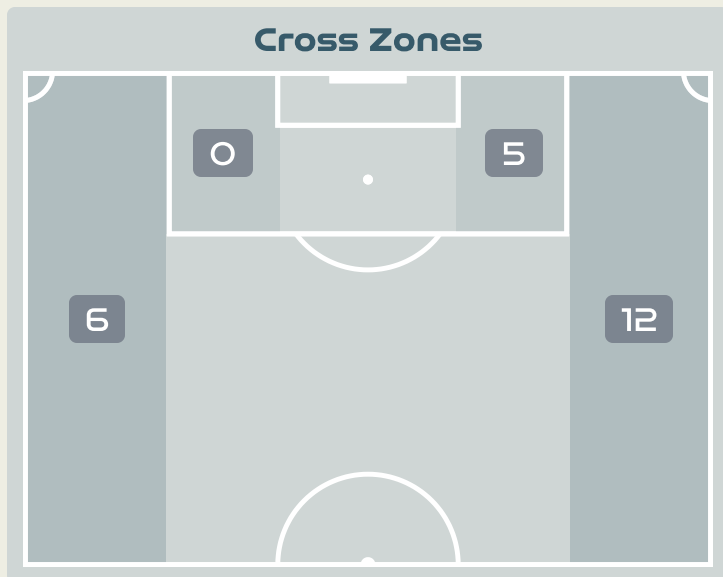
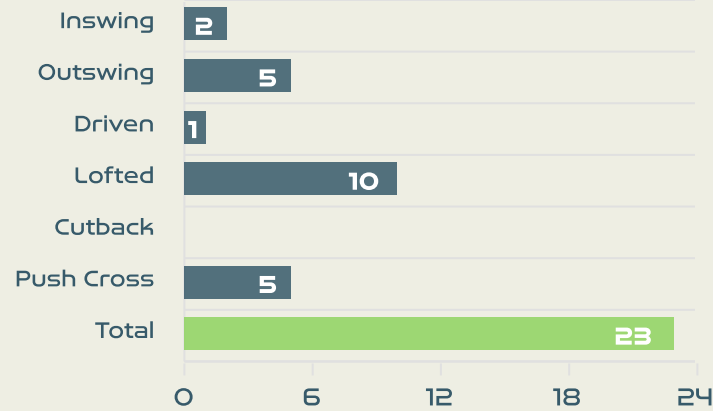
| Time | Player | Outcome | Body Part | Delivery Type |
|------|----------------------|----------------------|------------|---------------|
| 39 | 10 UCHEIBE Christy | Incomplete | Right Foot | Loose Ball |
| 48 | 22 ALOZIE Michelle | Off Target | Left Foot | Pass |
| 50 | 15 AJIBADE Rasheedat | Incomplete - Blocked | Right Foot | Pass |
| 50 | 12 KANU Uchenna | On Target - Goal | Left Foot | Loose Ball |
| 53 | 15 AJIBADE Rasheedat | Off Target | Right Foot | Pass |
| 55 | 15 AJIBADE Rasheedat | On Target - Saved | Right Foot | Pass |
| 64 | 15 AJIBADE Rasheedat | On Target - Saved | Head | Pass |
| 64 | 3 OHALE Osinachi | On Target - Goal | Head | Other |
| 71 | 8 OSHOALA Asisat | On Target - Goal | Right Foot | Loose Ball |
| 90 | 8 OSHOALA Asisat | Incomplete - Blocked | Right Foot | Other |
| 101 | 8 OSHOALA Asisat | On Target - Saved | Right Foot | Other |



Crosses (Open Play)



Delivery Type



Attempted

23

Completed

6

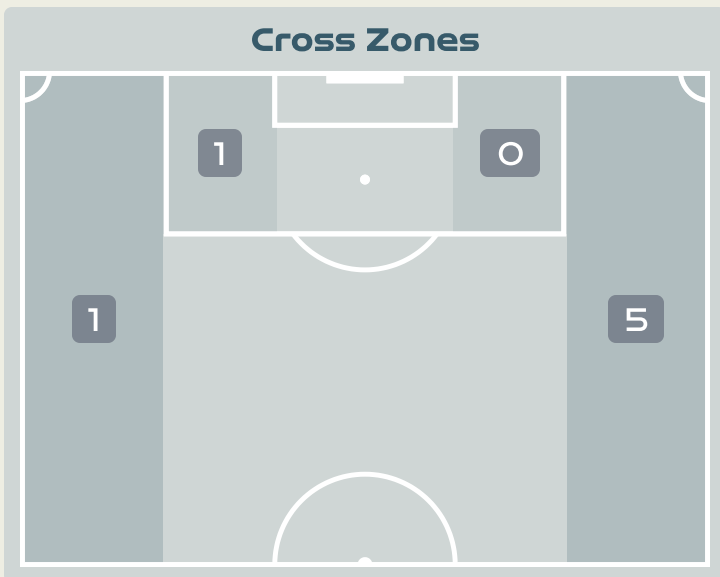
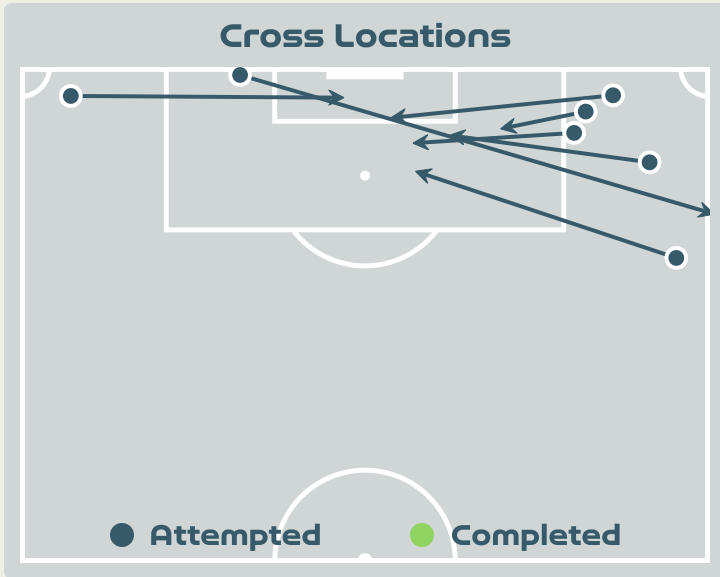
Most Crosses Attempted

7

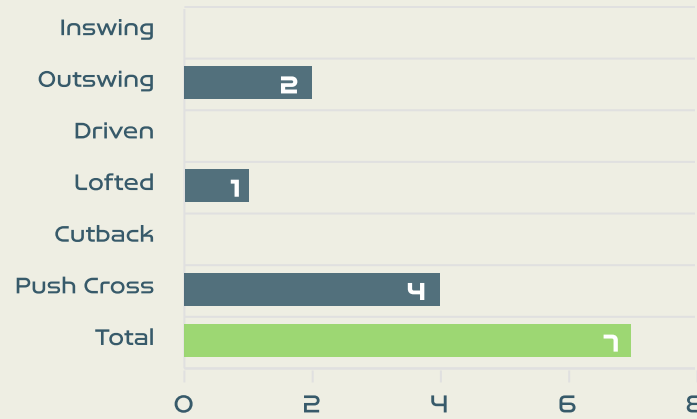
CARPENTER Ellie
RIGHT BACK

| # | Player | Inswing | Outswing | Driven | Lofted | Cutback | Push Cross | Total Attempted |
|----|--------------------|---------|----------|--------|--------|---------|------------|-----------------|
| 18 | ARNOLD Mackenzie | 0 | 0 | 0 | 0 | 0 | 0 | 0 |
| 5 | VINE Cortnee | 0 | 0 | 0 | 0 | 0 | 0 | 0 |
| 7 | CATLEY Steph | 0 | 0 | 0 | 1 | 0 | 1 | 2 |
| 9 | FOORD Caitlin | 2 | 0 | 0 | 0 | 0 | 2 | 4 |
| 10 | VAN EGMOND Emily | 0 | 1 | 0 | 0 | 0 | 0 | 1 |
| 14 | KENNEDY Alanna | 0 | 0 | 0 | 0 | 0 | 0 | 0 |
| 15 | HUNT Clare | 0 | 0 | 0 | 0 | 0 | 0 | 0 |
| 16 | RASO Hayley | 0 | 0 | 0 | 3 | 0 | 1 | 4 |
| 19 | GORRY Katrina | 0 | 3 | 1 | 1 | 0 | 0 | 5 |
| 21 | CARPENTER Ellie | 0 | 1 | 0 | 5 | 0 | 1 | 7 |
| 23 | COONEY-CROSS Kyra | 0 | 0 | 0 | 0 | 0 | 0 | 0 |
| 4 | POLKINGHORNE Clare | 0 | 0 | 0 | 0 | 0 | 0 | 0 |
| 8 | CHIDIAC Alex | 0 | 0 | 0 | 0 | 0 | 0 | 0 |

Crosses (Open Play)



Delivery Type



Attempted

7

Completed

0

Most Crosses Attempted

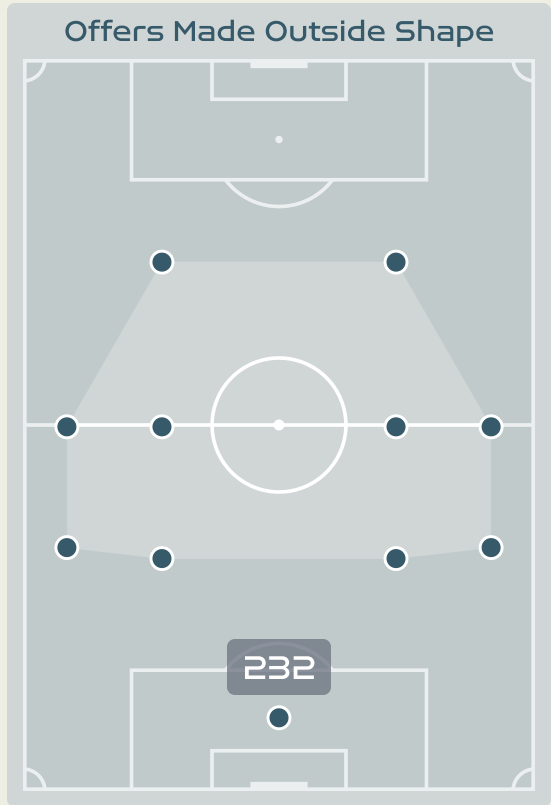
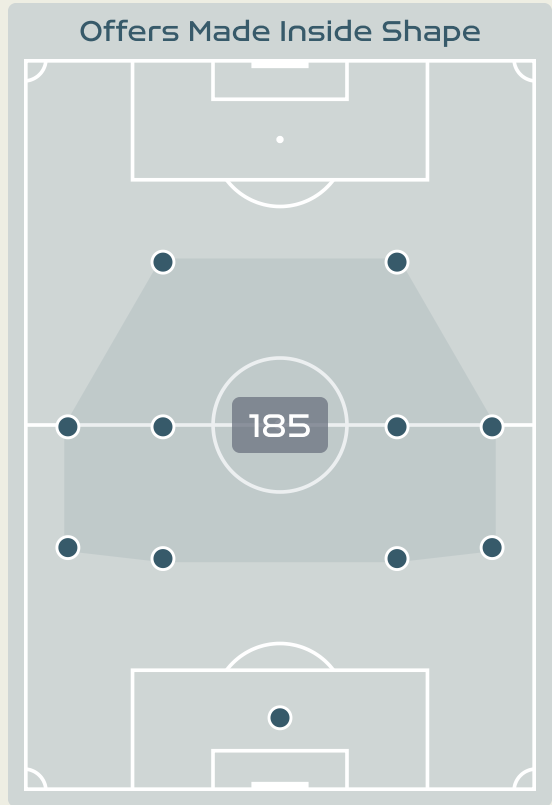
4

AJIBADE Rasheedat
ATTACKING MIDFIELD RIGHT

| # | Player | Inswing | Outswing | Driven | Lofted | Cutback | Push Cross | Total Attempted |
|----|-------------------|---------|----------|--------|--------|---------|------------|-----------------|
| 16 | NNADOZIE Chiamaka | 0 | 0 | 0 | 0 | 0 | 0 | 0 |
| 2 | PLUMPTRE Ashleigh | 0 | 0 | 0 | 0 | 0 | 0 | 0 |
| 3 | OHALE Osinachi | 0 | 0 | 0 | 0 | 0 | 0 | 0 |
| 6 | ONUMONU Ifeoma | 0 | 0 | 0 | 0 | 0 | 0 | 0 |
| 7 | PAYNE Toni | 0 | 0 | 0 | 0 | 0 | 0 | 0 |
| 10 | UCHEIBE Christy | 0 | 0 | 0 | 0 | 0 | 0 | 0 |
| 12 | KANU Uchenna | 0 | 0 | 0 | 0 | 0 | 1 | 1 |
| 14 | DEMEHIN Blessing | 0 | 0 | 0 | 0 | 0 | 0 | 0 |
| 15 | AJIBADE Rasheedat | 0 | 2 | 0 | 0 | 0 | 2 | 4 |
| 18 | AYINDE Halimatu | 0 | 0 | 0 | 0 | 0 | 0 | 0 |
| 22 | ALOZIE Michelle | 0 | 0 | 0 | 1 | 0 | 1 | 2 |
| 4 | OGBONNA Glory | 0 | 0 | 0 | 0 | 0 | 0 | 0 |
| 8 | OSHOALA Asisat | 0 | 0 | 0 | 0 | 0 | 0 | 0 |
| 19 | ECHEGINI Jennifer | 0 | 0 | 0 | 0 | 0 | 0 | 0 |
| 21 | OKORONKWO Esther | 0 | 0 | 0 | 0 | 0 | 0 | 0 |



Offering to Receive



| # | Player | Offers Made | Offers Received | % Made & Received |
|----|--------------------|-------------|-----------------|-------------------|
| 18 | ARNOLD Mackenzie | 2 | 0 | 0% |
| 5 | VINE Cortnee | 30 | 8 | 26.7% |
| 7 | CATLEY Steph | 27 | 7 | 25.9% |
| 9 | FOORD Caitlin | 73 | 20 | 27.4% |
| 10 | VAN EGMOND Emily | 54 | 11 | 20.4% |
| 14 | KENNEDY Alanna | 13 | 6 | 46.2% |
| 15 | HUNT Clare | 9 | 4 | 44.4% |
| 16 | RASO Hayley | 31 | 14 | 45.2% |
| 19 | GORRY Katrina | 41 | 24 | 58.5% |
| 21 | CARPENTER Ellie | 75 | 26 | 34.7% |
| 23 | COONEY-CROSS Kyra | 49 | 17 | 34.7% |
| 4 | POLKINGHORNE Clare | 1 | 1 | 100% |
| 8 | CHIDIAC Alex | 12 | 4 | 33.3% |



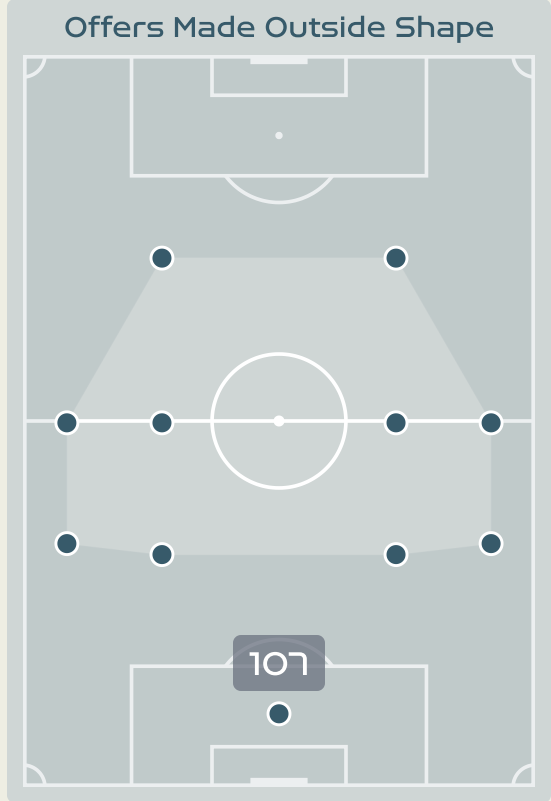
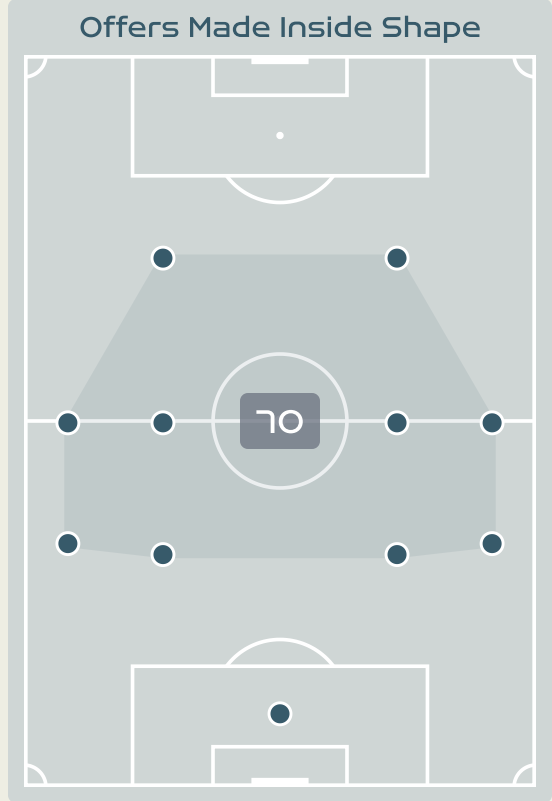
Offering to Receive

177
Total Offers Made

51
Total Offers Received

Most Offers
43
AJIBADE Rasheedat
ATTACKING MIDFIELD RIGHT

73
Offers Made in Final Third



71
Offers Made in Middle Third

33
Offers Made in Defensive Third

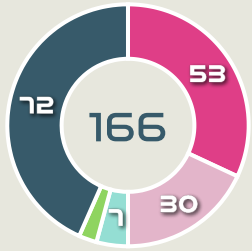
| # | Player | Offers Made | Offers Received | % Made & Received |
|----|-------------------|-------------|-----------------|-------------------|
| 16 | NNADOZIE Chiamaka | 3 | 2 | 66.7% |
| 2 | PLUMPTRE Ashleigh | 21 | 5 | 23.8% |
| 3 | OHAE Osinachi | 5 | 4 | 80% |
| 6 | ONUMONU Ifeoma | 20 | 1 | 5% |
| 7 | PAYNE Toni | 8 | 0 | 0% |
| 10 | UCHEIBE Christy | 4 | 2 | 50% |
| 12 | KANU Uchenna | 22 | 4 | 18.2% |
| 14 | DEMEHIN Blessing | 7 | 3 | 42.9% |
| 15 | AJIBADE Rasheedat | 43 | 17 | 39.5% |
| 18 | AYINDE Halimatu | 6 | 3 | 50% |
| 22 | ALOZIE Michelle | 14 | 6 | 42.9% |
| 4 | OGBONNA Glory | 4 | 2 | 50% |
| 8 | OSHOALA Asisat | 8 | 1 | 12.5% |
| 19 | ECHEGINI Jennifer | 3 | 0 | 0% |
| 21 | OKORONKWO Esther | 9 | 1 | 11.1% |



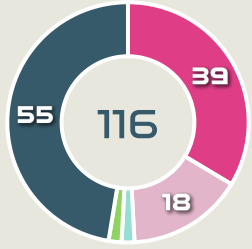
Movement to Receive

Movement Types by Phase

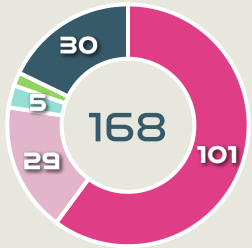
Final Third Phase



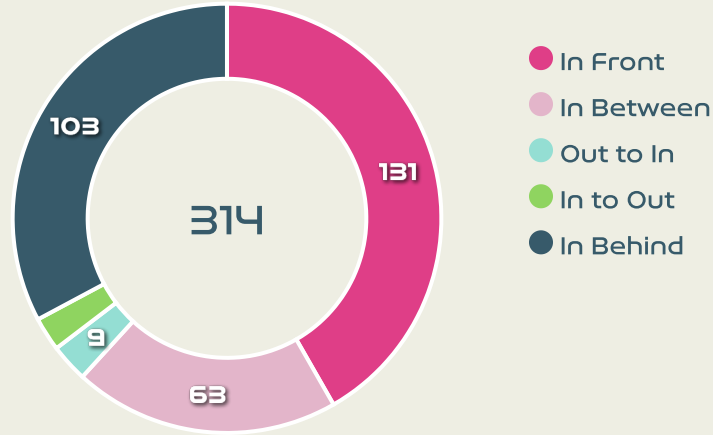
Progression Phase



Build Up Phase



All Movement Types

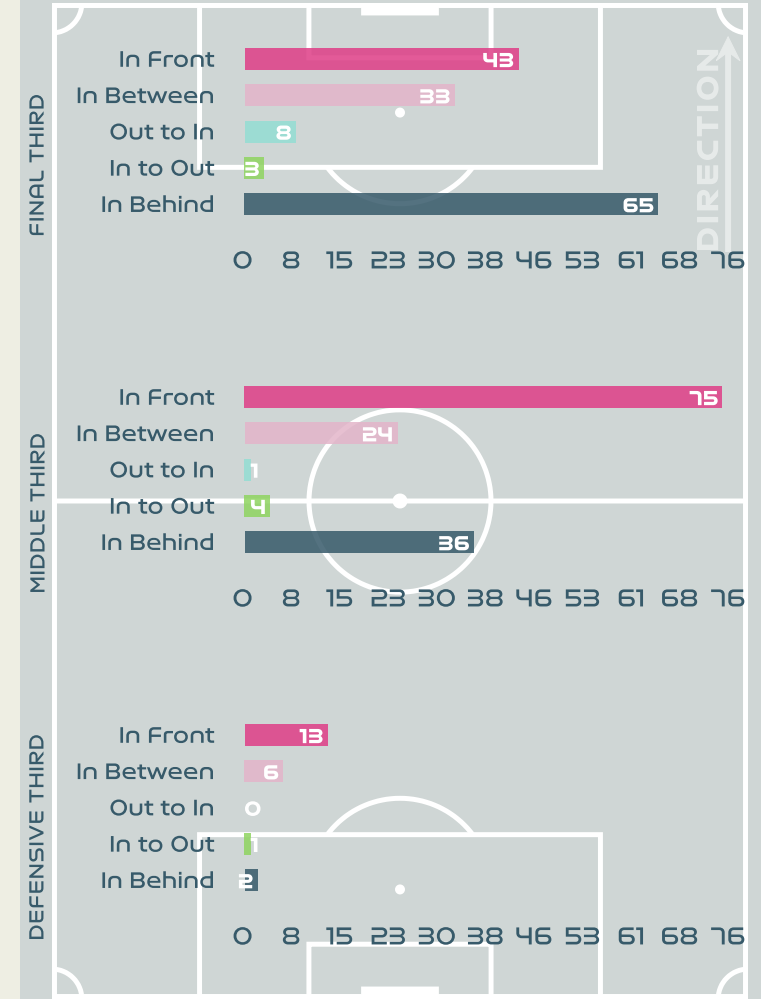


- In Front
- In Between
- Out to In
- In to Out
- In Behind

Top Ranked Players

| Type | Player | Movements |
|------------|----------------------|-----------|
| In Front | 23 COONEY-CROSS Kyra | 36 |
| In Between | 9 FOORD Caitlin | 25 |
| Out to In | 9 FOORD Caitlin | 3 |
| In to Out | 10 VAN EGMOND Emily | 3 |
| In Behind | 9 FOORD Caitlin | 29 |

Movement Types Pitch Third

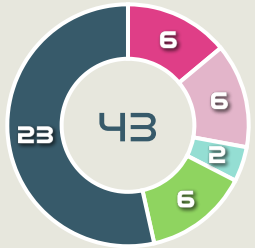




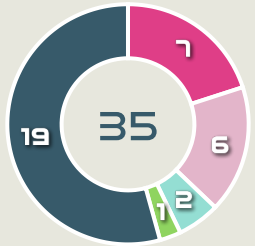
Movement to Receive

Movement Types by Phase

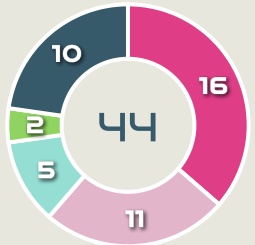
Final Third Phase



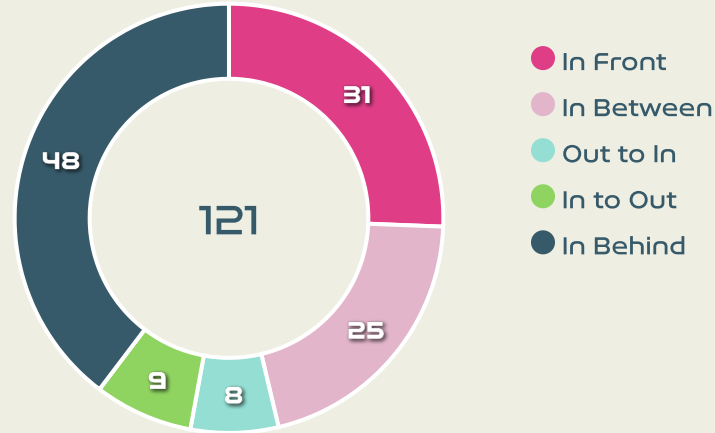
Progression Phase



Build Up Phase



All Movement Types

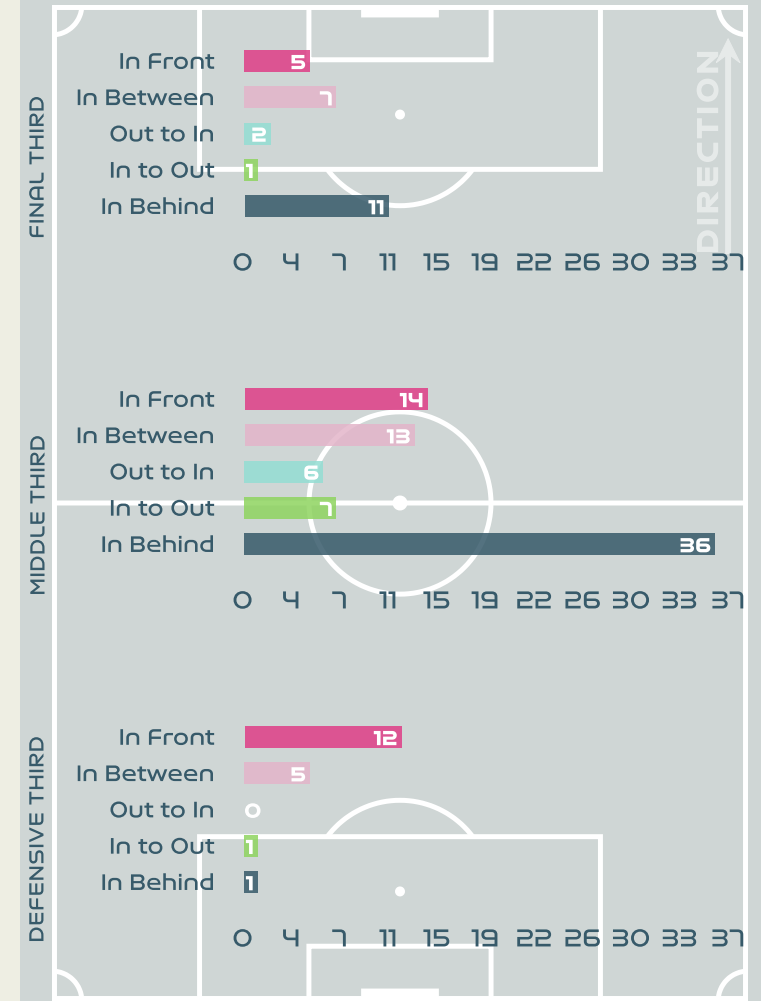


- In Front
- In Between
- Out to In
- In to Out
- In Behind

Top Ranked Players

| Type | Player | Movements |
|------------|----------------------|-----------|
| In Front | 2 PLUMPTRE Ashleigh | 8 |
| In Between | 15 AJIBADE Rasheedat | 11 |
| Out to In | 15 AJIBADE Rasheedat | 3 |
| In to Out | 2 PLUMPTRE Ashleigh | 2 |
| In Behind | 6 ONUMONU Ifeoma | 17 |

Movement Types Pitch Third





OUT OF POSSESSION

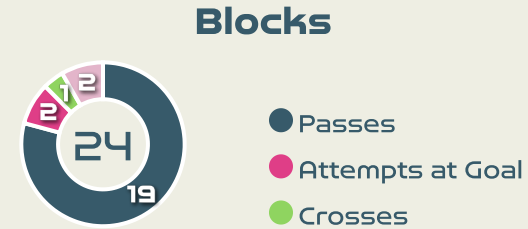


Australia v Nigeria

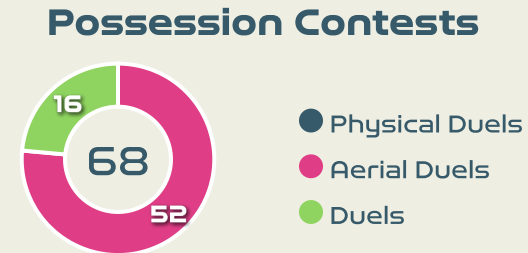
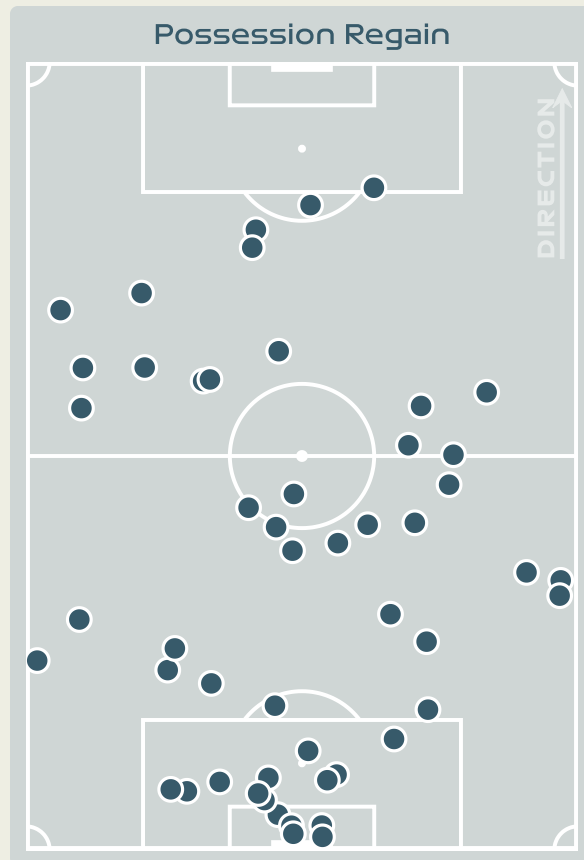
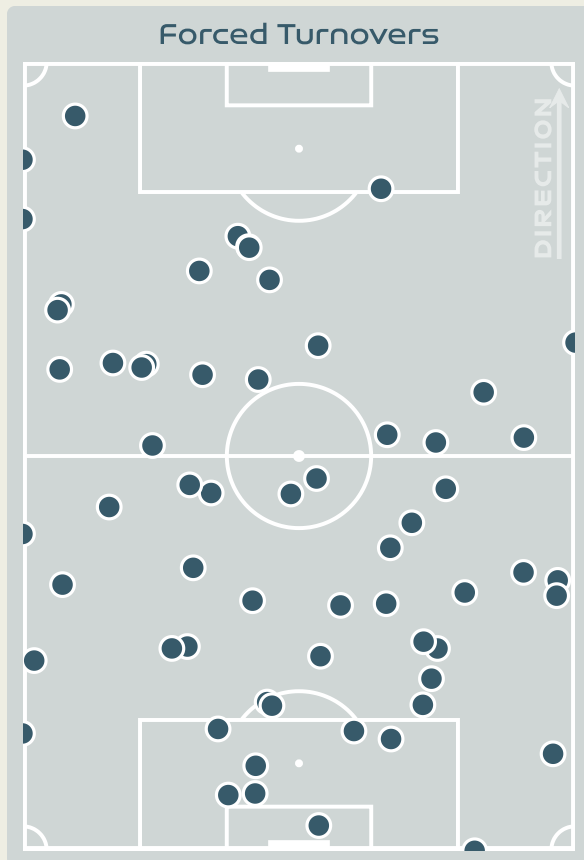




Defensive Actions



| # | Player | Total Possession Regains |
|----|--------------------|--------------------------|
| 18 | ARNOLD Mackenzie | 4 |
| 5 | VINE Cortnee | 3 |
| 7 | CATLEY Steph | 5 |
| 9 | FOORD Caitlin | 4 |
| 10 | VAN EGMOND Emily | 3 |
| 14 | KENNEDY Alanna | 7 |
| 15 | HUNT Clare | 9 |
| 16 | RASO Hayley | 3 |
| 19 | GORRY Katrina | 6 |
| 21 | CARPENTER Ellie | 6 |
| 23 | COONEY-CROSS Kyra | 2 |
| 4 | POLKINGHORNE Clare | 1 |
| 8 | CHIDIAC Alex | 0 |





Defensive Actions

74

Forced Turnovers

63

Possession Regained

3

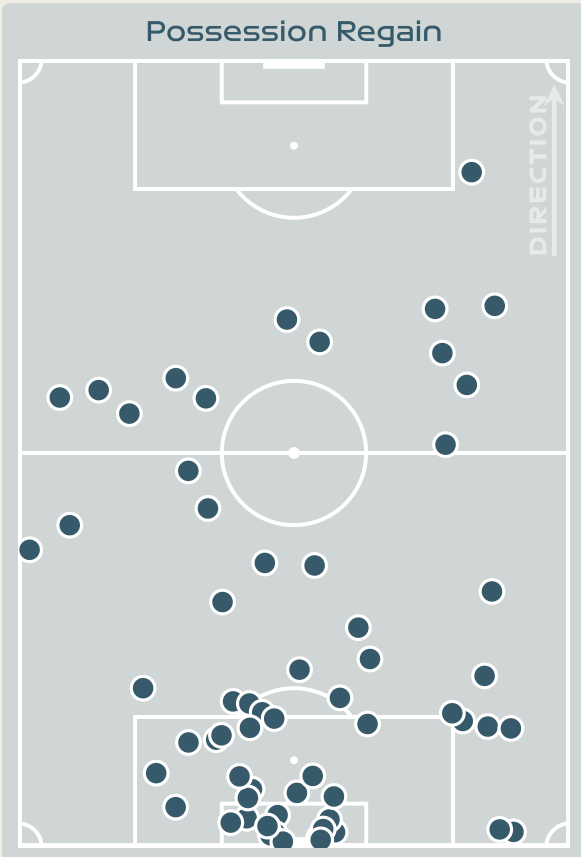
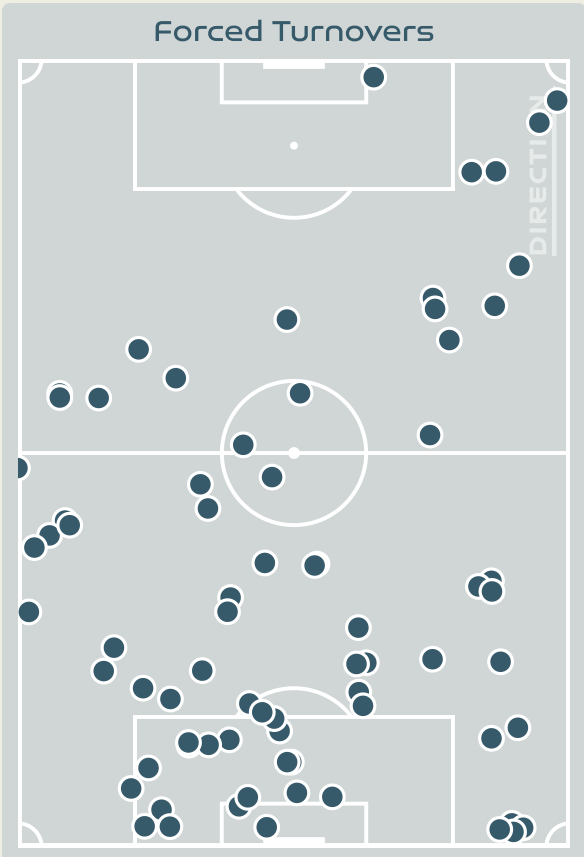
Interceptions

33

Tackles

1.71

Possession Actions / Defensive Action



Blocks



Possession Contests



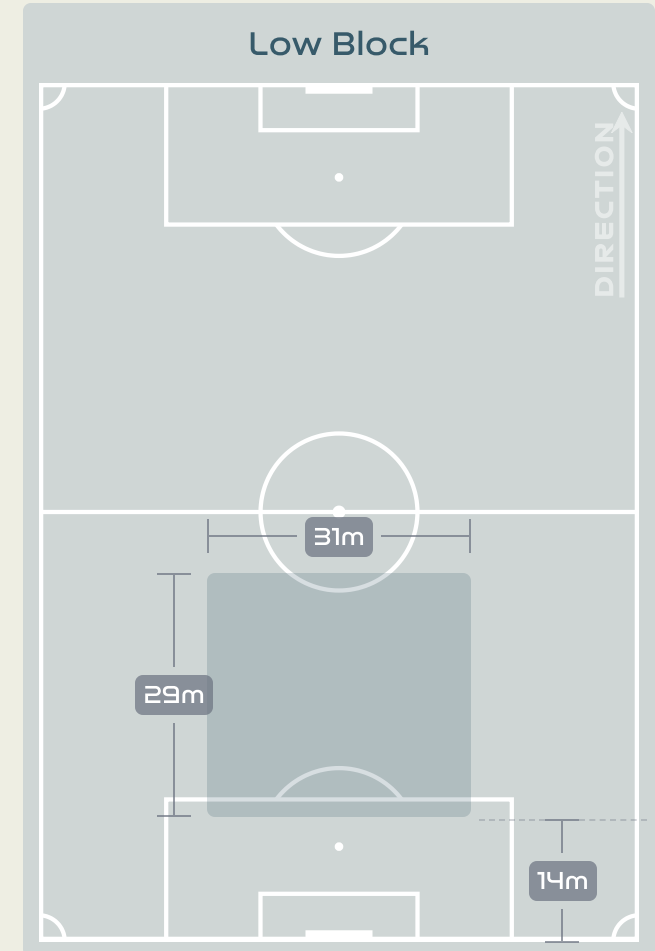
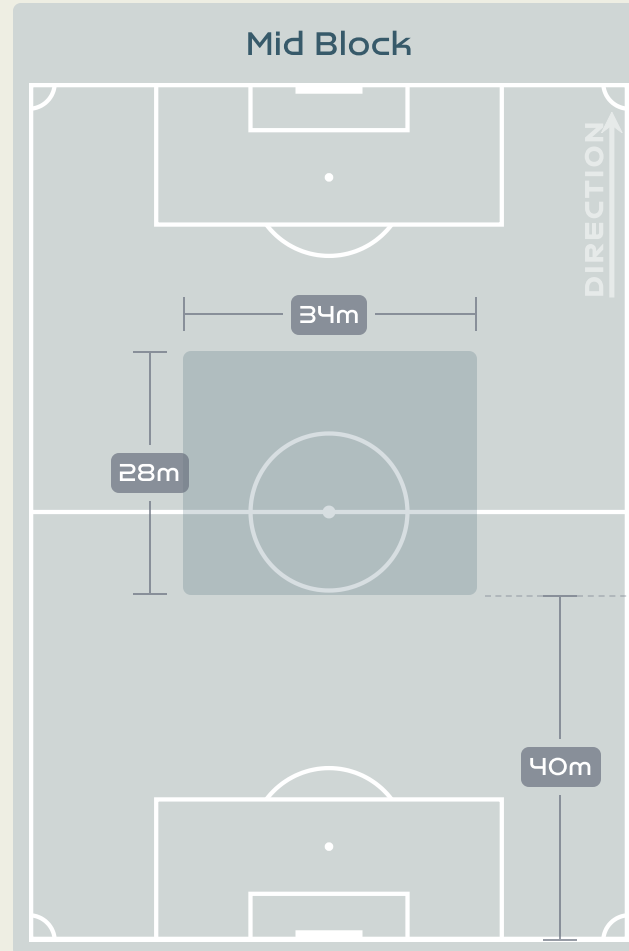
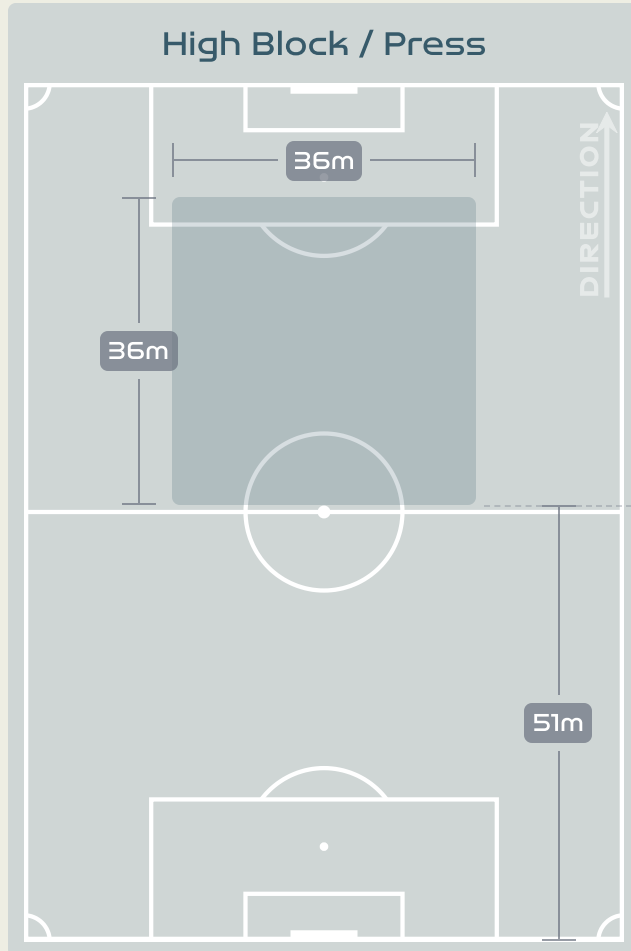
Most Possession Regains

15

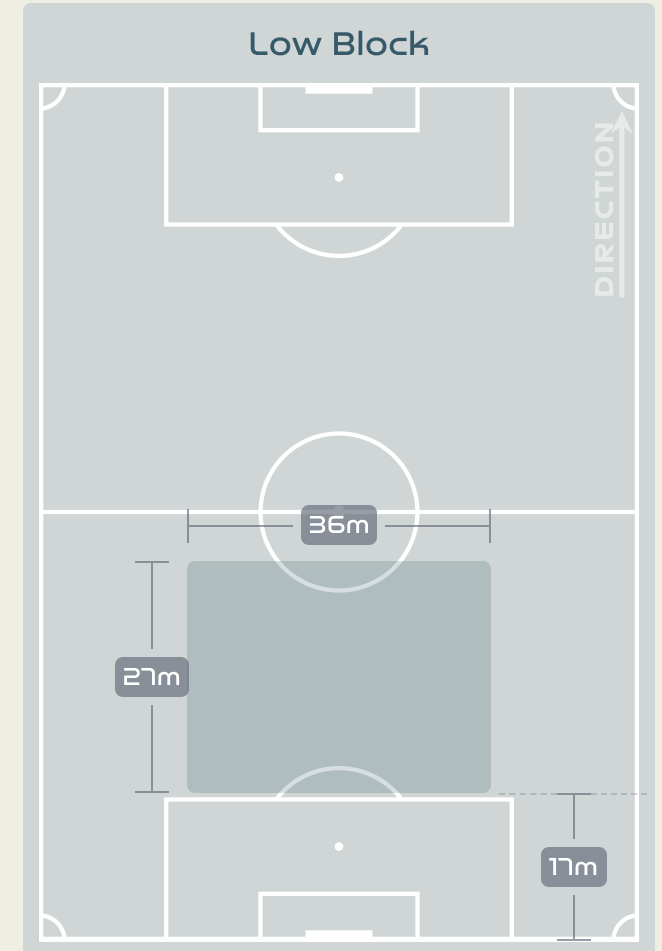
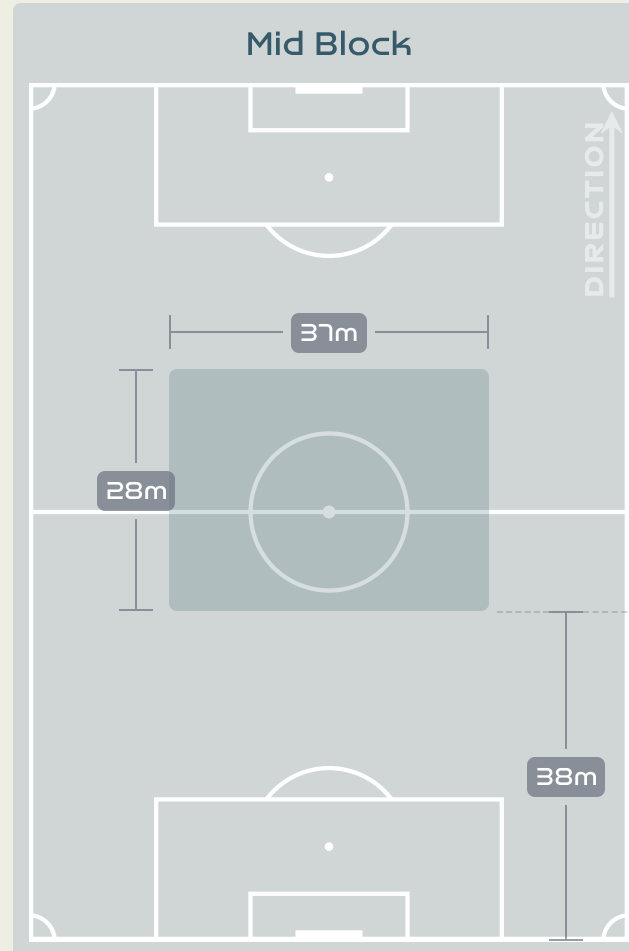
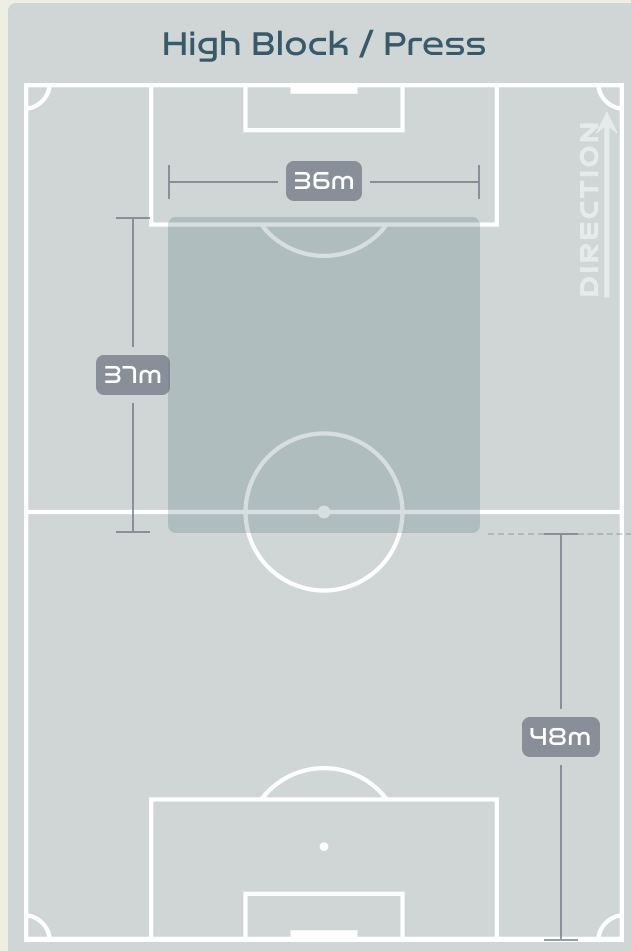
NNADOZIE Chiamaka
GOALKEEPER

| # | Player | Total Possession Regains |
|----|-------------------|--------------------------|
| 16 | NNADOZIE Chiamaka | 15 |
| 2 | PLUMPTRE Ashleigh | 4 |
| 3 | OHALE Osinachi | 6 |
| 6 | ONUMONU Ifeoma | 1 |
| 7 | PAYNE Toni | 3 |
| 10 | UCHEIBE Christy | 6 |
| 12 | KANU Uchenna | 2 |
| 14 | DEMEHIN Blessing | 5 |
| 15 | AJIBADE Rasheedat | 5 |
| 18 | AYINDE Halimatu | 7 |
| 22 | ALOZIE Michelle | 5 |
| 4 | OGBONNA Glory | 0 |
| 8 | OSHOALA Asisat | 1 |
| 19 | ECHEGINI Jennifer | 1 |
| 21 | OKORONKWO Esther | 2 |

Defensive Line Height & Team Length



Defensive Line Height & Team Length



Defensive Pressure



Australia

Nigeria



| | | |
|-------|----------------------------|--------|
| 164 | Total Pressures | 213 |
| 47 | Direct Pressures | 45 |
| 1.58s | Avg Pressure Duration | 1.58s |
| 62 | Forced Turnovers | 74 |
| 8.32s | Ball Recovery Time | 13.01s |
| 58 | Pushing on into Pressing | 72 |
| 112 | Pushing on | 155 |
| 24 | Pressing Direction Inside | 30 |
| 80 | Pressing Direction Outside | 116 |

Most Direct Pressures

10

CARPENTER Ellie
RIGHT BACK

Most Direct Pressures

10

AYINDE Halimatu
DEFENSIVE MIDFIELD CENTRE LEFT





GOALKEEPING



Australia v Nigeria

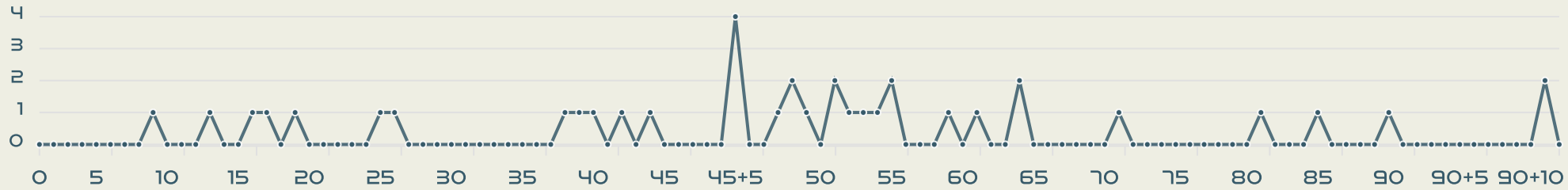


Goalkeeping Involvement



Australia

Australia GK Involvement Timeline



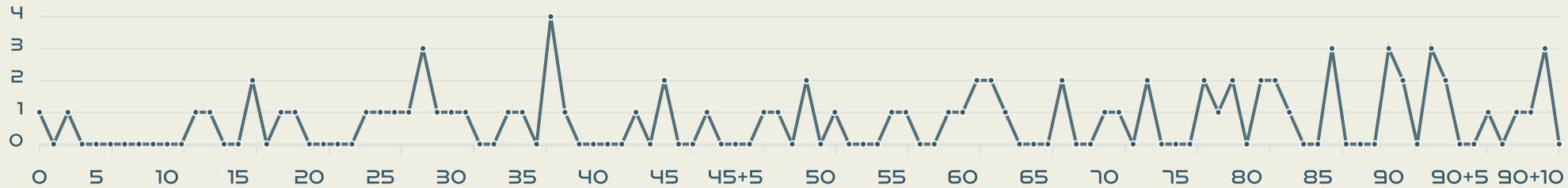
38

Total Involvements



Nigeria

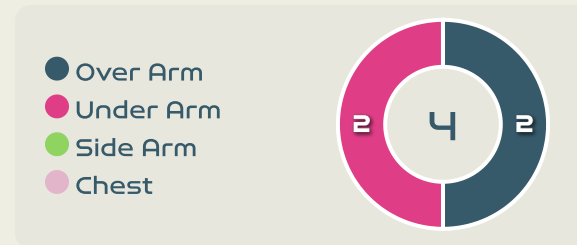
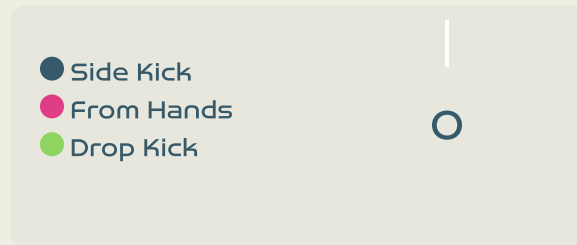
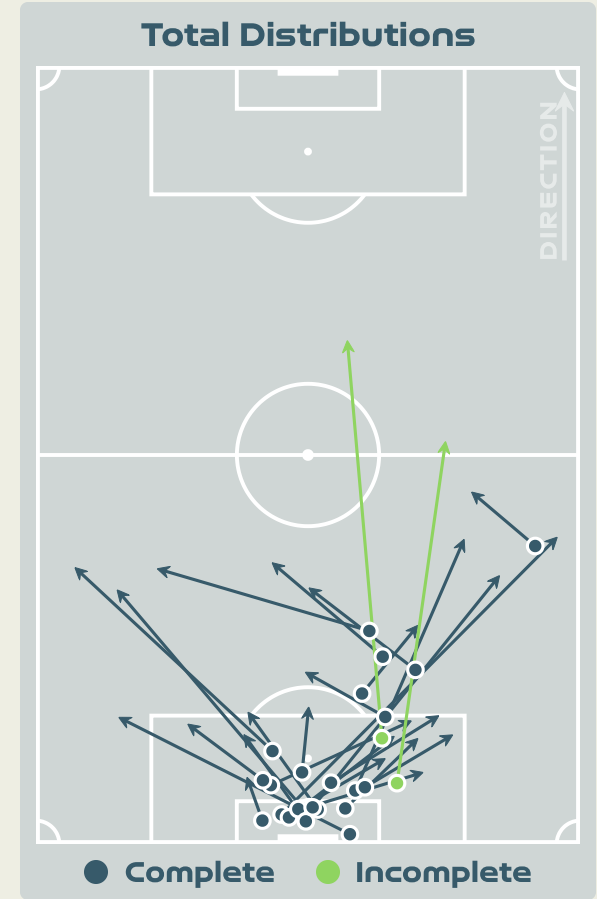
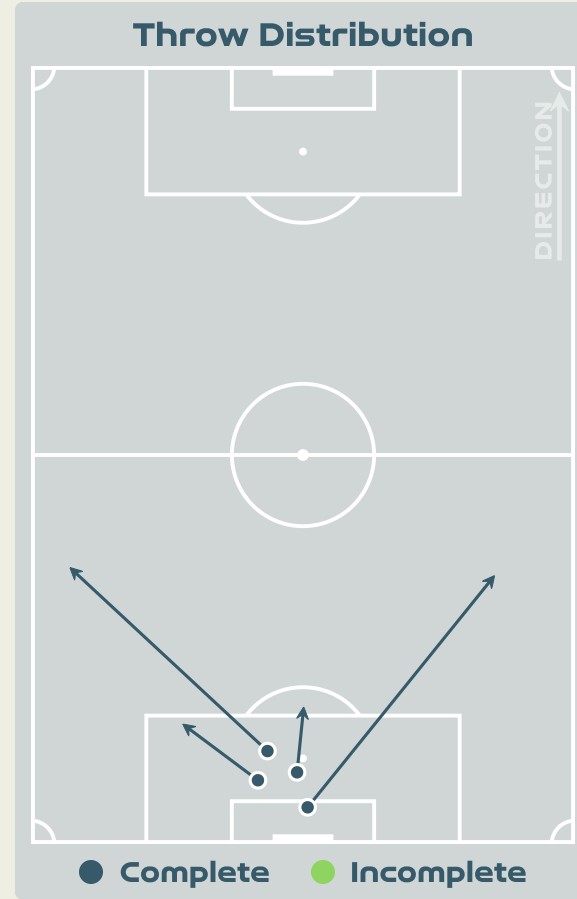
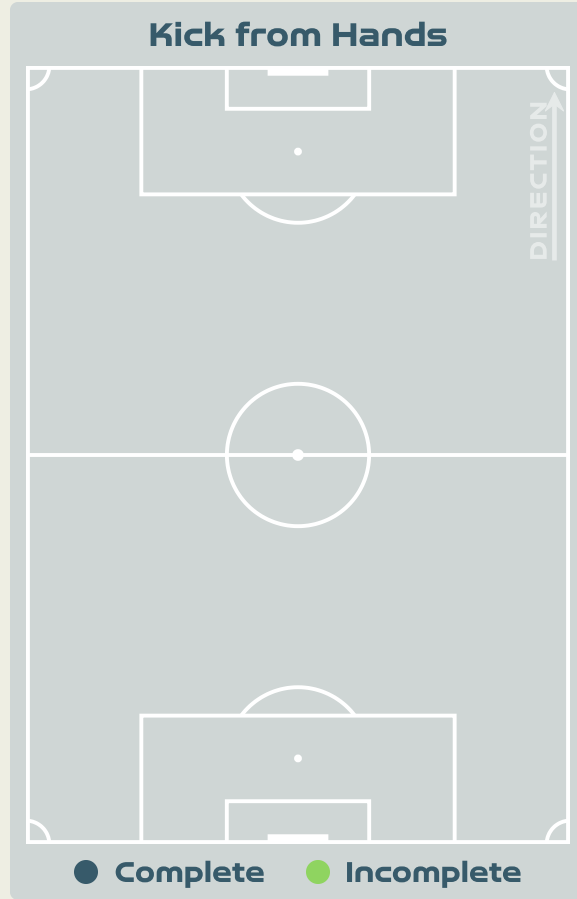
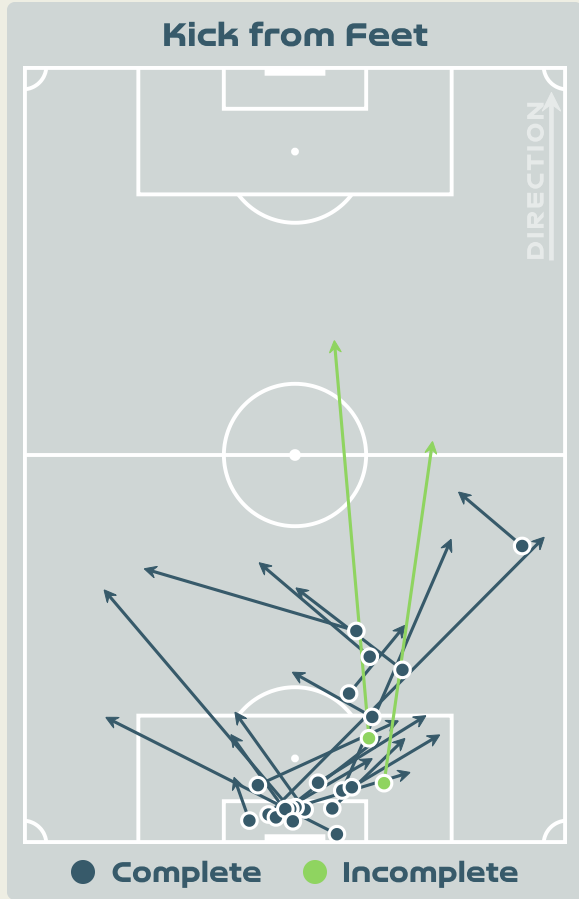
Nigeria GK Involvement Timeline



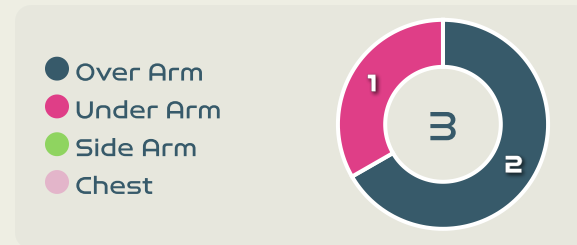
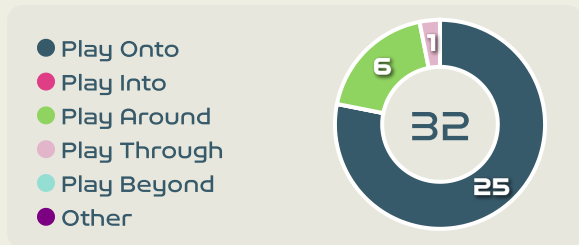
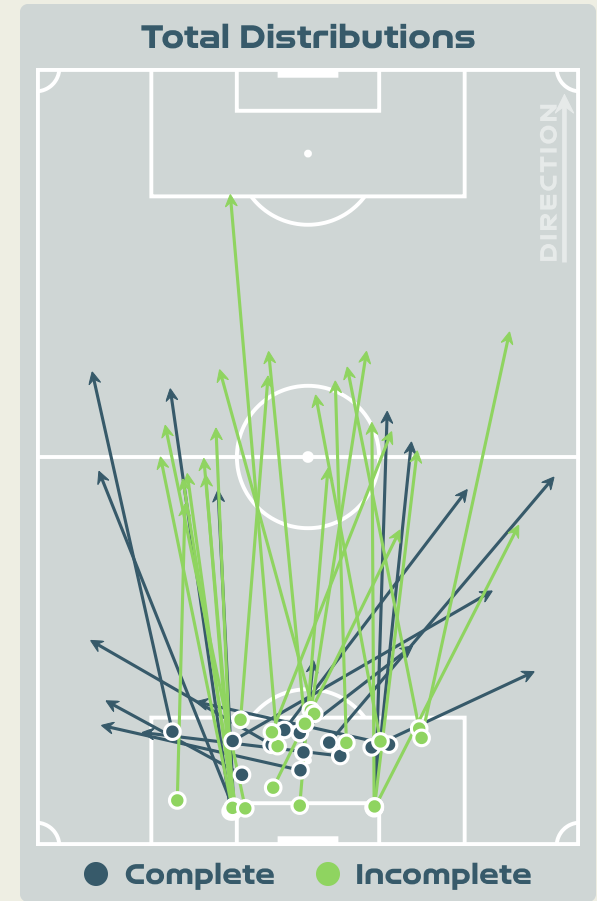
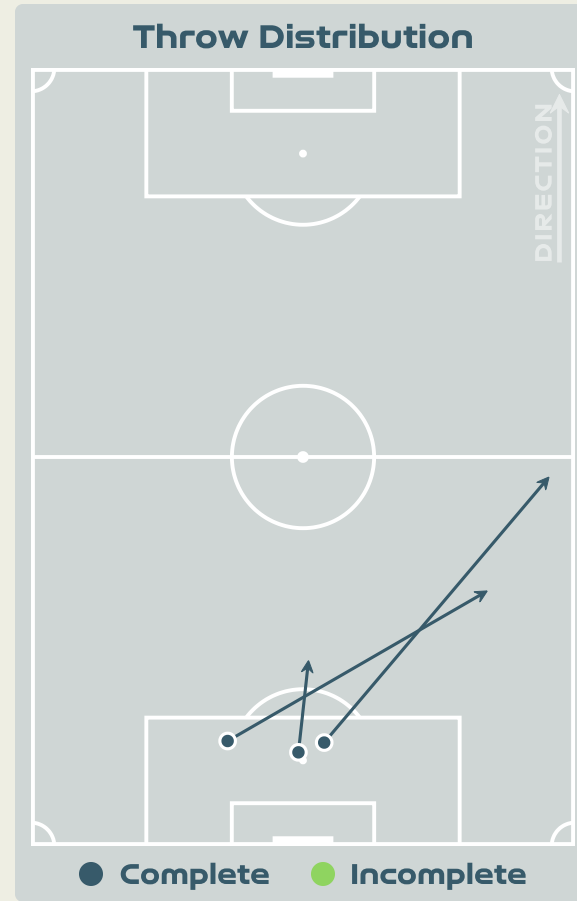
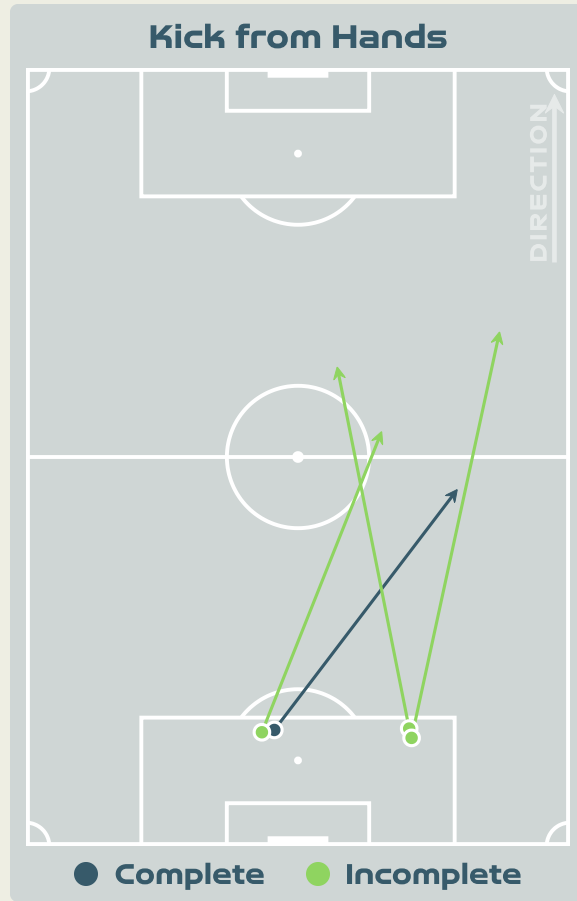
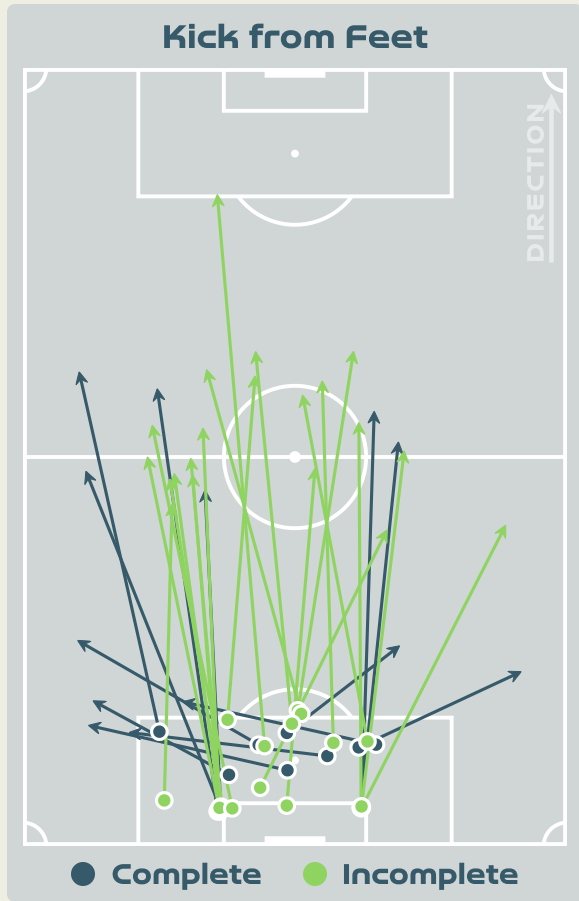
79

Total Involvements

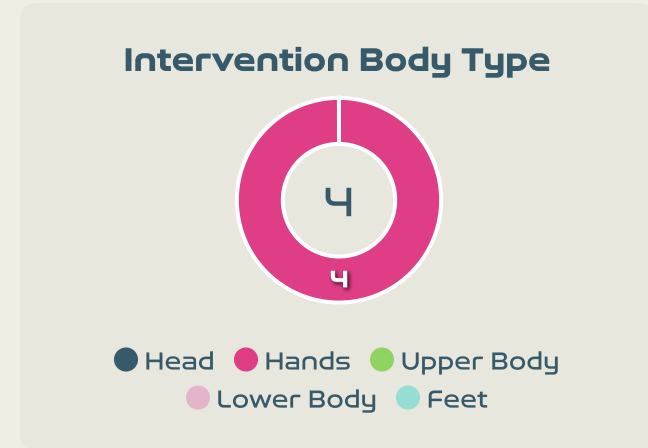
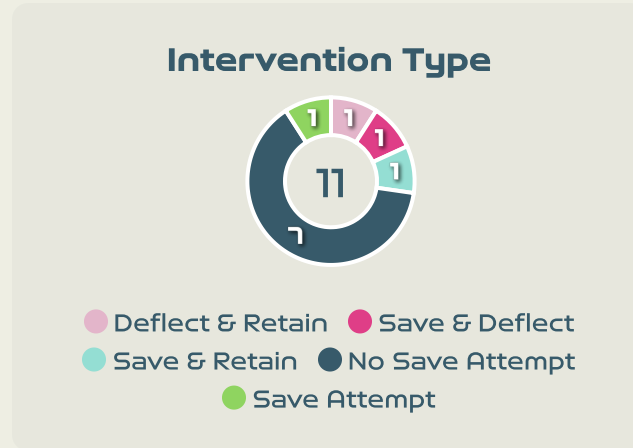
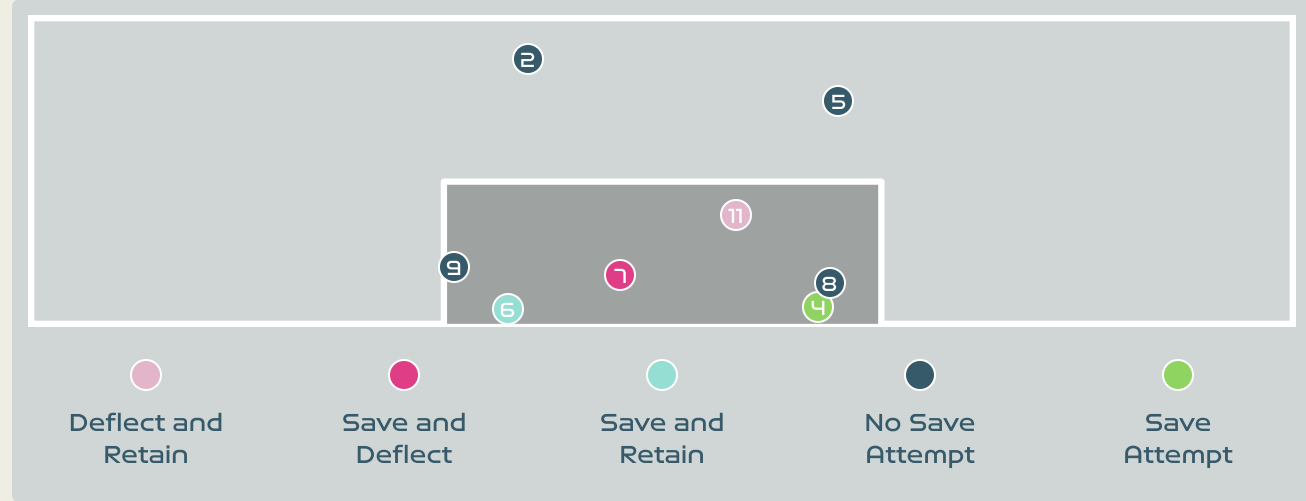
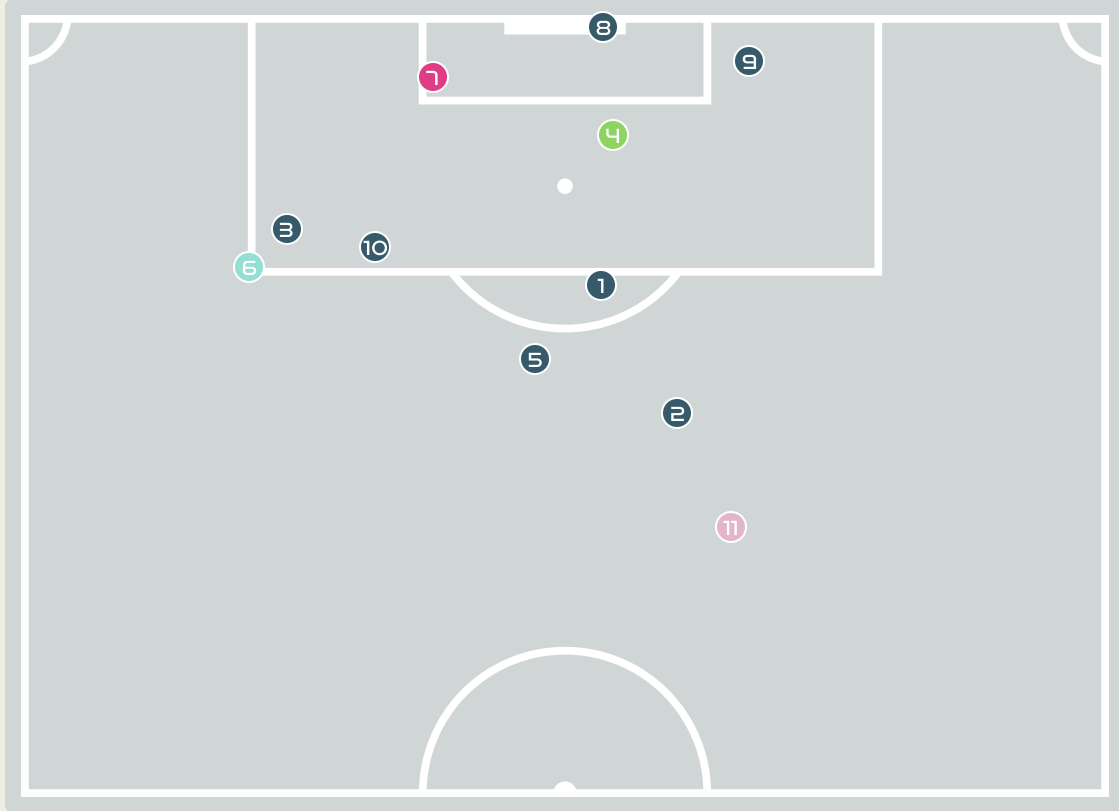
Goalkeeping Distribution



Goalkeeping Distribution



Goal Prevention



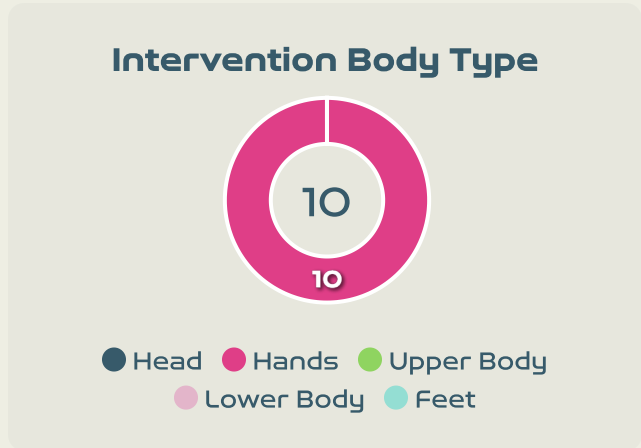
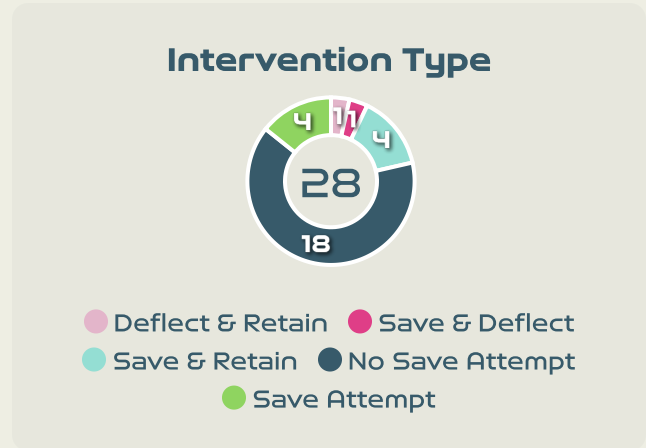
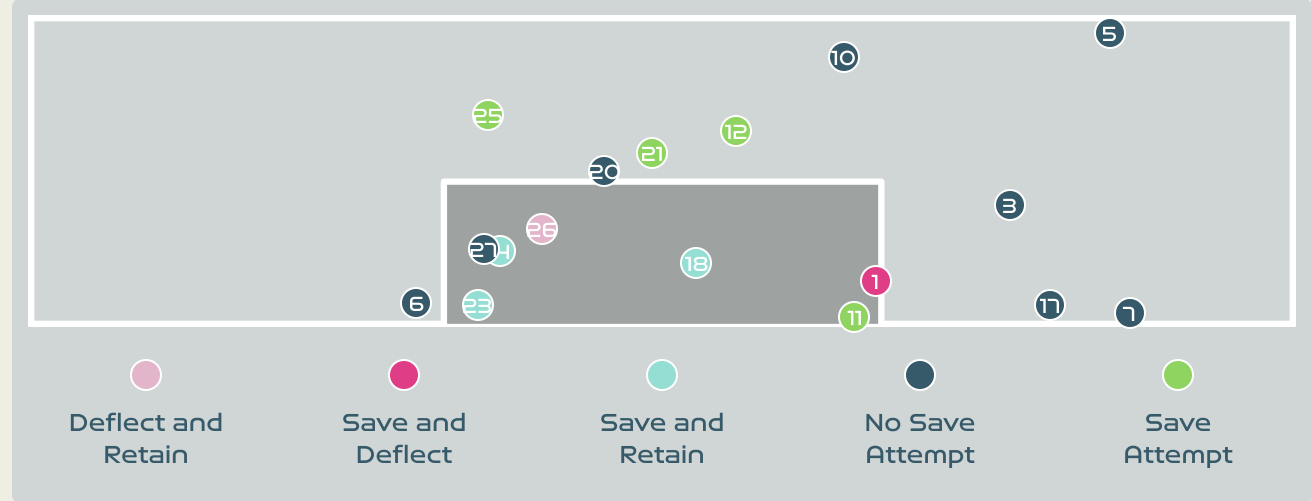
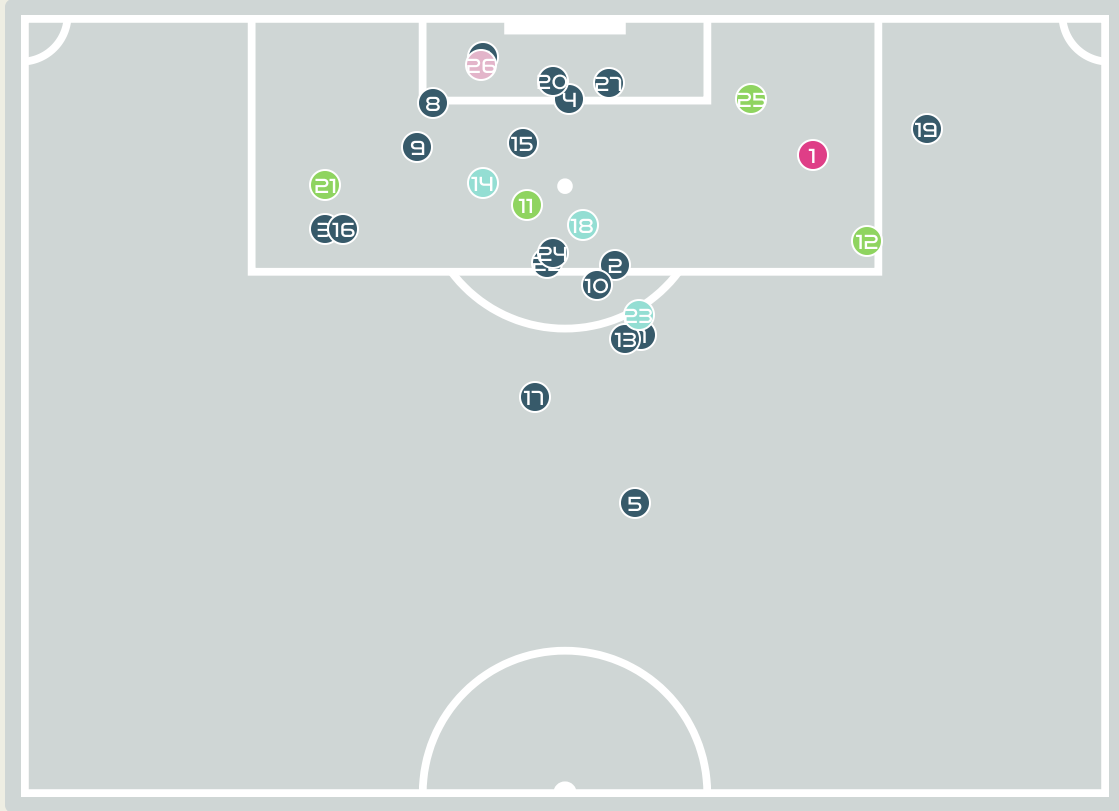
11
Total Attempts on Goal Faced

50
Save %

| Total Attempts on Goal Faced | Total Goal Interventions | Save & Retain | Deflect & Retain | Save & Deflect | Save Attempt | No Save Attempt |
|------------------------------|--------------------------|---------------|------------------|----------------|--------------|-----------------|
| 11 | 2 | 1 | 0 | 1 | 1 | 7 |



Goal Prevention

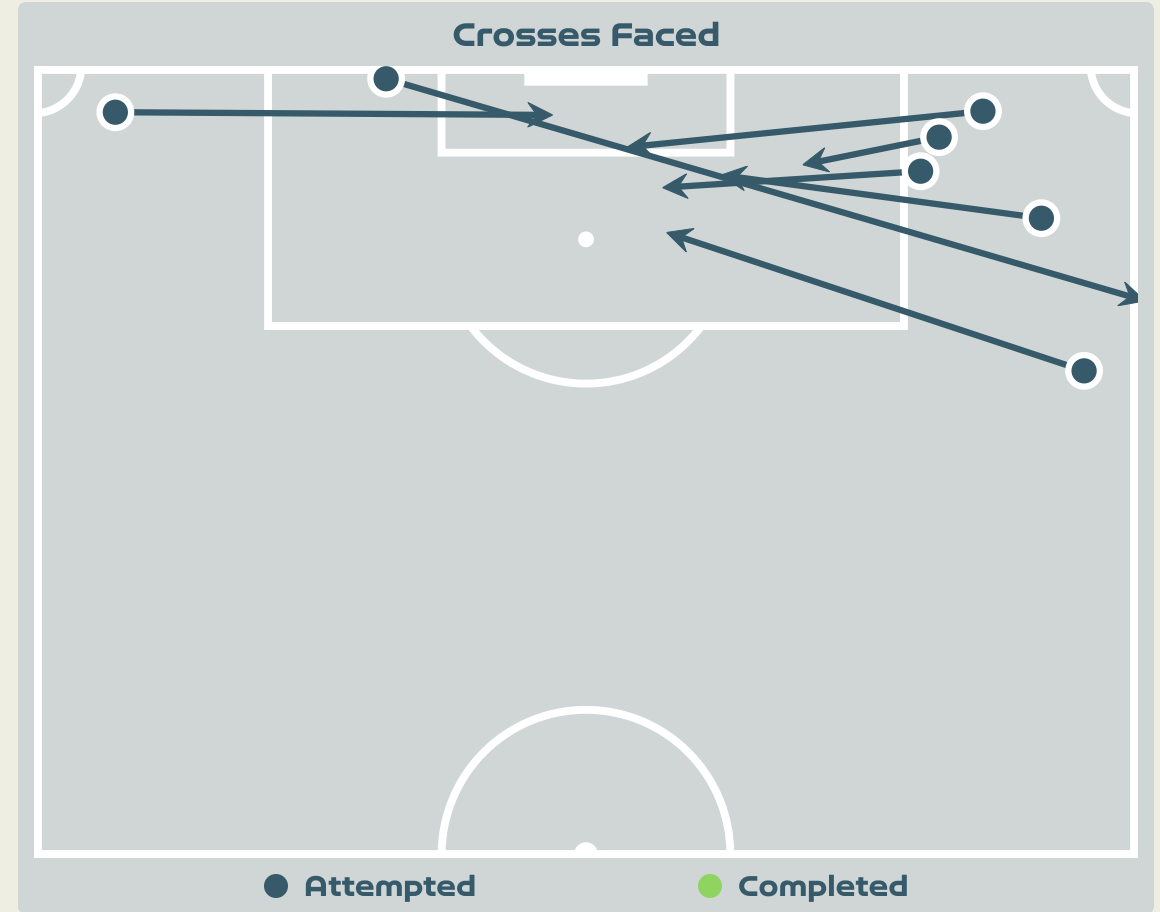
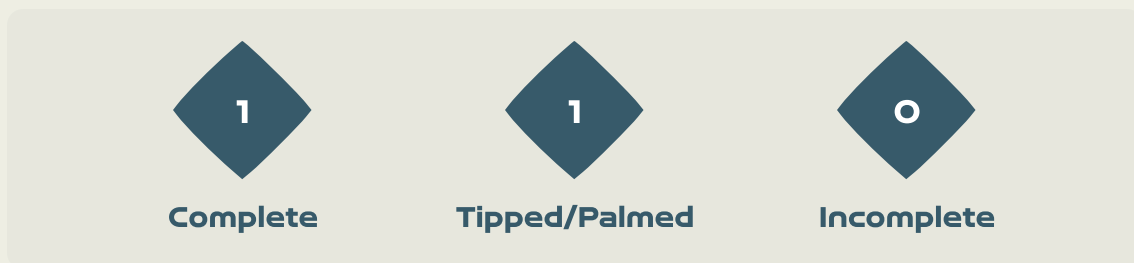
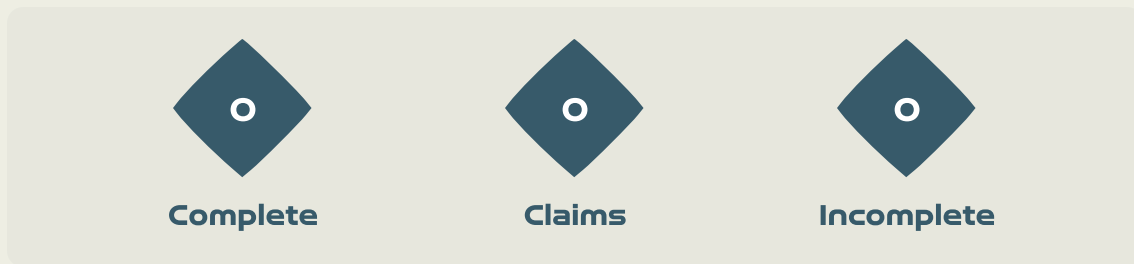
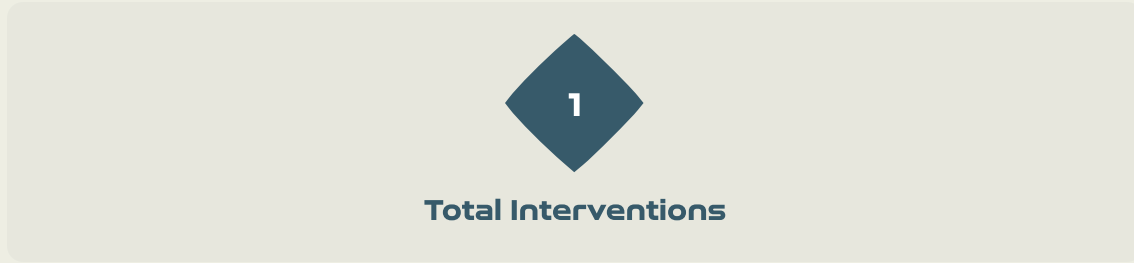


28
Total Attempts on Goal Faced

71
Save %

| Total Attempts on Goal Faced | Total Goal Interventions | Save & Retain | Deflect & Retain | Save & Deflect | Save Attempt | No Save Attempt |
|------------------------------|--------------------------|---------------|------------------|----------------|--------------|-----------------|
| 28 | 5 | 4 | 0 | 1 | 4 | 18 |

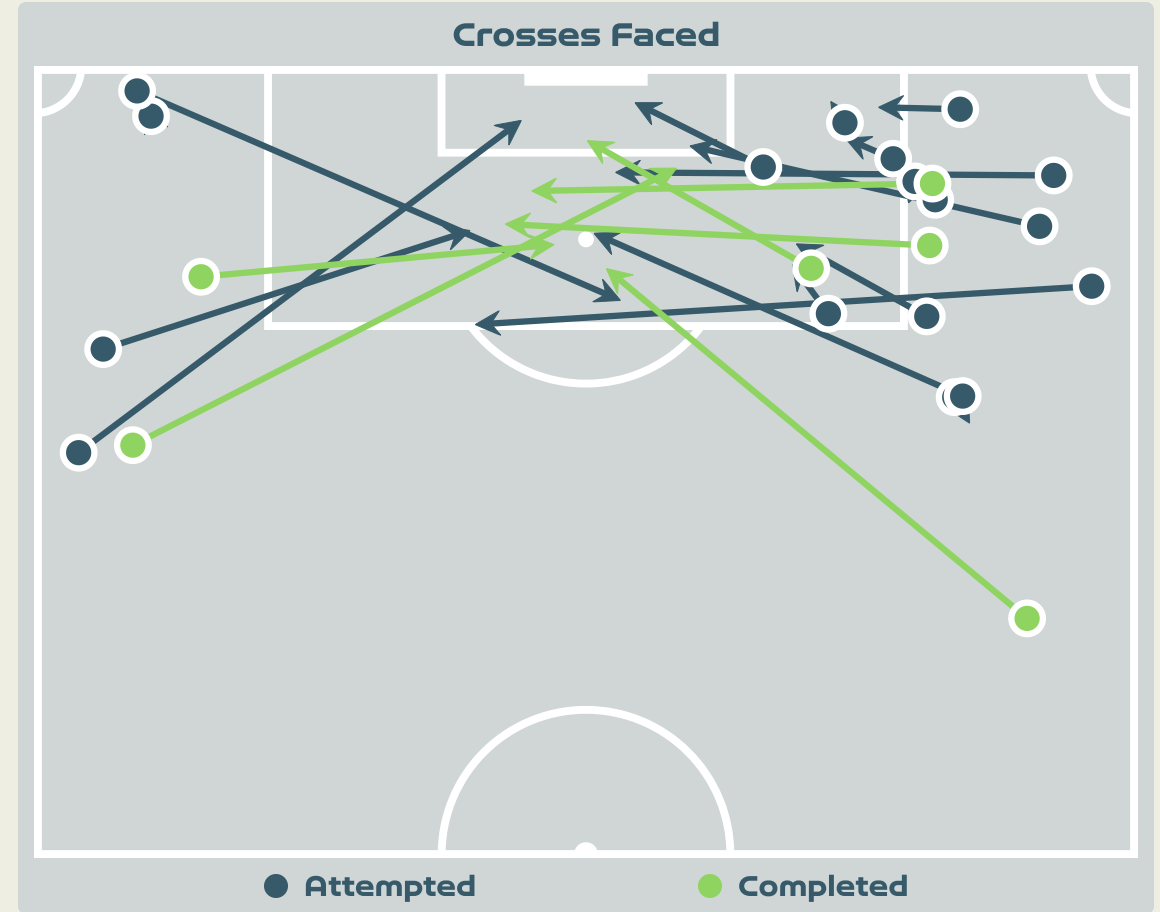
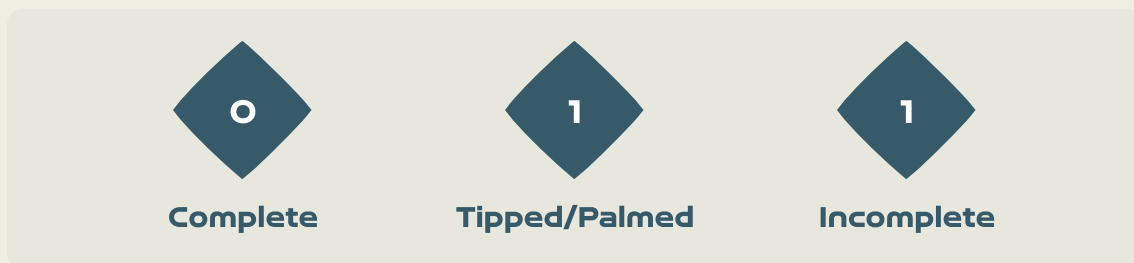
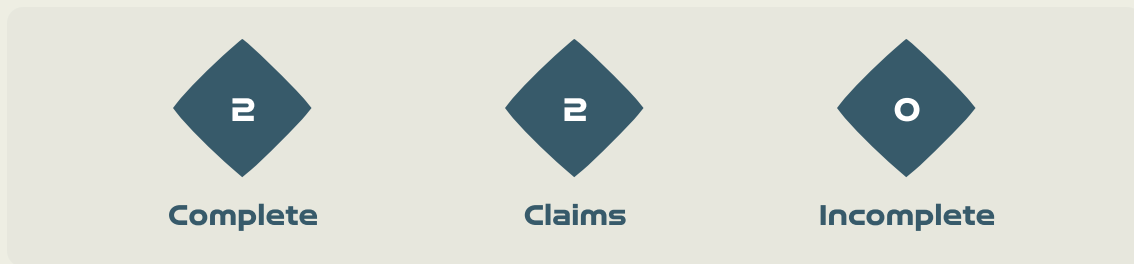
Aerial Control



Delivery Types Faced

| Total | In Swing | Out Swing | Driven | Lofted | Cutback | Push |
|-------|----------|-----------|--------|--------|---------|------|
| 10 | 1 | 2 | 0 | 3 | 0 | 4 |

Aerial Control



Delivery Types Faced

| Total | In Swing | Out Swing | Driven | Lofted | Cutback | Push |
|-------|----------|-----------|--------|--------|---------|------|
| 37 | 7 | 5 | 1 | 17 | 0 | 7 |



SET PLAYS



Australia v Nigeria





Set Plays - Corners

40

Total Set Plays

9

Total Free Kicks

0

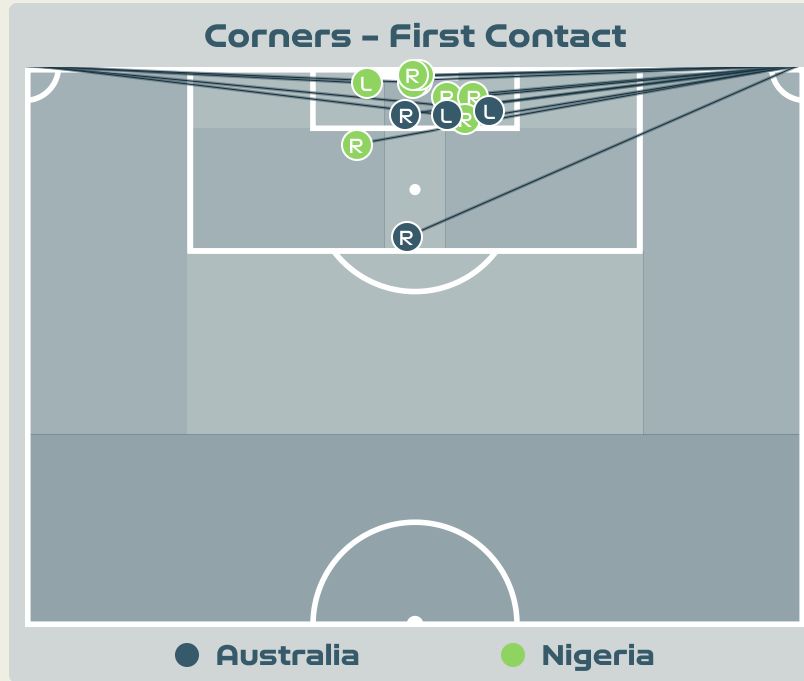
Total Penalties

15

Total Corners

16

Total Throw Ins



| Delivery Type | From Left Side | From Right Side | Total |
|----------------------|----------------|-----------------|-------|
| Direct to Area | 5 | 9 | 14 |
| Short | 0 | 1 | 1 |
| Edge of Penalty Area | 0 | 0 | 0 |

| Delivery Style | Total |
|----------------|-------|
| Inswing | 5 |
| Outswing | 0 |
| Driven | 0 |

| Free Kicks | |
|---------------------|-------|
| Type | Total |
| Direct | 8 |
| Direct (on target) | 0 |
| Direct (off target) | 1 |
| Indirect | 1 |

First Contacts on Australia Crosses

4

By Australia

10

By Nigeria

| Top 5 Player First Contacts | | |
|-----------------------------|-----------|-------|
| Player | Team | Total |
| NNADOZIE Chiamaka | Nigeria | 4 |
| KENNEDY Alanna | Australia | 2 |
| ALOZIE Michelle | Nigeria | 2 |
| VAN EGMOND Emily | Australia | 1 |
| RASO Hayley | Australia | 1 |

Set Plays - Corners

26

Total Set Plays

6

Total Free Kicks

0

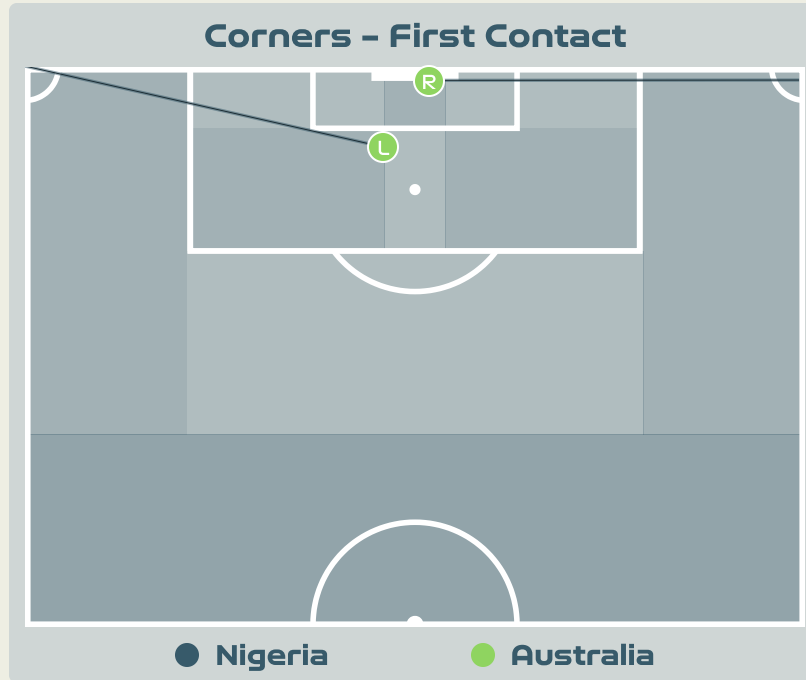
Total Penalties

2

Total Corners

18

Total Throw Ins



| Delivery Type | From Left Side | From Right Side | Total |
|----------------------|----------------|-----------------|-------|
| Direct to Area | 1 | 1 | 2 |
| Short | 0 | 0 | 0 |
| Edge of Penalty Area | 0 | 0 | 0 |

| Delivery Style | Total |
|----------------|-------|
| Inswing | 0 |
| Outswing | 0 |
| Driven | 0 |

| Free Kicks | |
|---------------------|-------|
| Type | Total |
| Direct | 5 |
| Direct (on target) | 0 |
| Direct (off target) | 0 |
| Indirect | 1 |

First Contacts on Nigeria Crosses

0

By Nigeria

2

By Australia

| Top 5 Player First Contacts | | |
|-----------------------------|-----------|-------|
| Player | Team | Total |
| ARNOLD Mackenzie | Australia | 1 |
| VAN EGMOND Emily | Australia | 1 |



INDIVIDUAL DATA IN POSSESSION



Australia v Nigeria



In Possession - Distributions



| # | Player | Passes Attempted | Passes Completed | Pass Completion % | Switches of Play | Crosses Attempted | Crosses Completed | Line Breaks Attempted | Line Breaks Completed | Line Break Completion % | Ball Progressions | Take Ons | Step Ins | Attempts at Goal | Goals |
|----|--------------------|------------------|------------------|-------------------|------------------|-------------------|-------------------|-----------------------|-----------------------|-------------------------|-------------------|----------|----------|------------------|-------|
| 18 | ARNOLD Mackenzie | 26 | 24 | 92% | 0 | 0 | 0 | 5 | 3 | 60% | 0 | 0 | 0 | 0 | 0 |
| 5 | VINE Cortnee | 19 | 16 | 84% | 0 | 0 | 0 | 3 | 2 | 66% | 4 | 2 | 2 | 2 | 0 |
| 7 | CATLEY Steph | 36 | 29 | 81% | 0 | 11 | 1 | 12 | 6 | 50% | 0 | 0 | 0 | 3 | 0 |
| 9 | FOORD Caitlin | 16 | 11 | 69% | 0 | 4 | 1 | 6 | 3 | 50% | 3 | 3 | 0 | 6 | 0 |
| 10 | VAN EGMOND Emily | 31 | 24 | 77% | 0 | 1 | 1 | 9 | 7 | 77% | 0 | 0 | 0 | 6 | 1 |
| 14 | KENNEDY Alanna | 59 | 51 | 86% | 1 | 0 | 0 | 10 | 5 | 50% | 1 | 0 | 1 | 3 | 1 |
| 15 | HUNT Clare | 60 | 54 | 90% | 1 | 0 | 0 | 13 | 9 | 69% | 0 | 0 | 0 | 0 | 0 |
| 16 | RASO Hayley | 21 | 16 | 76% | 0 | 4 | 0 | 5 | 4 | 80% | 4 | 2 | 2 | 1 | 0 |
| 19 | GORRY Katrina | 67 | 54 | 81% | 0 | 6 | 1 | 19 | 12 | 63% | 3 | 1 | 2 | 2 | 0 |
| 21 | CARPENTER Ellie | 55 | 42 | 76% | 0 | 7 | 3 | 19 | 15 | 78% | 3 | 1 | 2 | 1 | 0 |
| 23 | COONEY-CROSS Kyra | 61 | 50 | 82% | 0 | 4 | 2 | 16 | 12 | 75% | 1 | 0 | 1 | 1 | 0 |
| 4 | POLKINGHORNE Clare | 7 | 6 | 86% | 0 | 0 | 0 | 2 | 1 | 50% | 0 | 0 | 0 | 0 | 0 |
| 8 | CHIDIAC Alex | 7 | 6 | 86% | 0 | 0 | 0 | 4 | 3 | 75% | 1 | 1 | 0 | 2 | 0 |

In Possession - Offers & Receptions



| | | | Offer movement types | | | | | | |
|----|--------------------|--------------|----------------------|------------|-----------|-----------|-----------|-------------|-----------------|
| # | Player | Total Offers | In Front | In Between | Out to In | In to Out | In Behind | No Movement | Offers Received |
| 18 | ARNOLD Mackenzie | 2 | 0 | 0 | 0 | 0 | 0 | 2 | 0 |
| 5 | VINE Cortnee | 30 | 4 | 3 | 1 | 1 | 13 | 8 | 8 |
| 7 | CATLEY Steph | 27 | 11 | 2 | 0 | 0 | 2 | 12 | 7 |
| 9 | FOORD Caitlin | 73 | 6 | 25 | 3 | 1 | 29 | 9 | 20 |
| 10 | VAN EGMOND Emily | 54 | 14 | 14 | 0 | 3 | 17 | 6 | 11 |
| 14 | KENNEDY Alanna | 13 | 1 | 0 | 0 | 0 | 1 | 11 | 6 |
| 15 | HUNT Clare | 9 | 0 | 0 | 0 | 0 | 2 | 7 | 4 |
| 16 | RASO Hayley | 31 | 2 | 2 | 2 | 1 | 11 | 13 | 14 |
| 19 | GORRY Katrina | 41 | 28 | 6 | 0 | 0 | 1 | 6 | 24 |
| 21 | CARPENTER Ellie | 75 | 27 | 6 | 0 | 0 | 23 | 19 | 26 |
| 23 | COONEY-CROSS Kyra | 49 | 36 | 4 | 1 | 1 | 0 | 7 | 17 |
| 4 | POLKINGHORNE Clare | 1 | 0 | 0 | 0 | 0 | 0 | 1 | 1 |
| 8 | CHIDIAC Alex | 12 | 2 | 1 | 2 | 1 | 4 | 2 | 4 |

In Possession - Distributions



| # | Player | Passes Attempted | Passes Completed | Pass Completion % | Switches of Play | Crosses Attempted | Crosses Completed | Line Breaks Attempted | Line Breaks Completed | Line Break Completion % | Ball Progressions | Take Ons | Step Ins | Attempts at Goal | Goals |
|----|-------------------|------------------|------------------|-------------------|------------------|-------------------|-------------------|-----------------------|-----------------------|-------------------------|-------------------|----------|----------|------------------|-------|
| 16 | NNADOZIE Chiamaka | 40 | 17 | 42% | 1 | 0 | 0 | 28 | 8 | 28% | 0 | 0 | 0 | 0 | 0 |
| 2 | PLUMPTRE Ashleigh | 28 | 22 | 79% | 0 | 0 | 0 | 16 | 10 | 62% | 1 | 0 | 1 | 0 | 0 |
| 3 | OHALE Osinachi | 24 | 18 | 75% | 0 | 0 | 0 | 9 | 4 | 44% | 1 | 0 | 1 | 1 | 1 |
| 6 | ONUMONU Ifeoma | 8 | 6 | 75% | 0 | 0 | 0 | 1 | 1 | 100% | 1 | 1 | 0 | 0 | 0 |
| 7 | PAYNE Toni | 21 | 15 | 71% | 0 | 2 | 0 | 5 | 3 | 60% | 1 | 0 | 1 | 0 | 0 |
| 10 | UCHEIBE Christy | 21 | 14 | 67% | 0 | 1 | 0 | 12 | 8 | 66% | 0 | 0 | 0 | 1 | 0 |
| 12 | KANU Uchenna | 12 | 10 | 83% | 0 | 1 | 0 | 2 | 2 | 100% | 1 | 1 | 0 | 1 | 1 |
| 14 | DEMEHIN Blessing | 25 | 21 | 84% | 0 | 0 | 0 | 5 | 3 | 60% | 0 | 0 | 0 | 0 | 0 |
| 15 | AJIBADE Rasheedat | 18 | 8 | 44% | 0 | 4 | 0 | 7 | 2 | 28% | 2 | 2 | 0 | 4 | 0 |
| 18 | AYINDE Halimatu | 27 | 22 | 81% | 0 | 0 | 0 | 8 | 6 | 75% | 0 | 0 | 0 | 0 | 0 |
| 22 | ALOZIE Michelle | 25 | 8 | 32% | 0 | 2 | 0 | 12 | 2 | 16% | 4 | 1 | 3 | 1 | 0 |
| 4 | OGBONNA Glory | 3 | 2 | 67% | 0 | 0 | 0 | 1 | 1 | 100% | 0 | 0 | 0 | 0 | 0 |
| 8 | OSHOALA Asisat | 7 | 4 | 57% | 0 | 0 | 0 | 3 | 2 | 66% | 1 | 1 | 0 | 3 | 1 |
| 19 | ECHEGINI Jennifer | 1 | 0 | 0% | 0 | 0 | 0 | 0 | 0 | 0% | 0 | 0 | 0 | 0 | 0 |
| 21 | OKORONKWO Esther | 5 | 5 | 100% | 0 | 0 | 0 | 0 | 0 | 0% | 0 | 0 | 0 | 0 | 0 |

In Possession - Offers & Receptions

| | | | Offer movement types | | | | | | |
|----|-------------------|--------------|----------------------|------------|-----------|-----------|-----------|-------------|-----------------|
| # | Player | Total Offers | In Front | In Between | Out to In | In to Out | In Behind | No Movement | Offers Received |
| 16 | NNADOZIE Chiamaka | 3 | 0 | 0 | 0 | 0 | 0 | 3 | 2 |
| 2 | PLUMPTRE Ashleigh | 21 | 8 | 1 | 0 | 2 | 2 | 8 | 5 |
| 3 | OHALE Osinachi | 5 | 0 | 0 | 0 | 0 | 0 | 5 | 4 |
| 6 | ONUMONU Ifeoma | 20 | 0 | 1 | 0 | 1 | 17 | 1 | 1 |
| 7 | PAYNE Toni | 8 | 2 | 0 | 1 | 1 | 4 | 0 | 0 |
| 10 | UCHEIBE Christy | 4 | 1 | 0 | 0 | 1 | 0 | 2 | 2 |
| 12 | KANU Uchenna | 22 | 2 | 3 | 2 | 0 | 9 | 6 | 4 |
| 14 | DEMEHIN Blessing | 7 | 1 | 0 | 0 | 0 | 0 | 6 | 3 |
| 15 | AJIBADE Rasheedat | 43 | 5 | 11 | 3 | 2 | 7 | 15 | 17 |
| 18 | AYINDE Halimatu | 6 | 4 | 2 | 0 | 0 | 0 | 0 | 3 |
| 22 | ALOZIE Michelle | 14 | 5 | 1 | 0 | 1 | 0 | 7 | 6 |
| 4 | OGBONNA Glory | 4 | 2 | 1 | 0 | 0 | 0 | 1 | 2 |
| 8 | OSHOALA Asisat | 8 | 0 | 3 | 0 | 0 | 5 | 0 | 1 |
| 19 | ECHEGINI Jennifer | 3 | 0 | 2 | 0 | 0 | 1 | 0 | 0 |
| 21 | OKORONKWO Esther | 9 | 1 | 0 | 2 | 1 | 3 | 2 | 1 |



INDIVIDUAL DATA OUT OF POSSESSION



Australia v Nigeria



Out of Possession



| # | Player | Tackles Made / Won | Blocks | Interceptions | Pressing Direct | Pressing Indirect | Duels Won - Aerial | Duels Won - Physical | Possession Contests won | Clearances | Loose Ball Receptions | Pushing On | Pushing On into Pressing | Possession Regains | Possession Interrupted |
|----|--------------------|--------------------|--------|---------------|-----------------|-------------------|--------------------|----------------------|-------------------------|------------|-----------------------|------------|--------------------------|--------------------|------------------------|
| 18 | ARNOLD Mackenzie | 0 / 0 | 0 | 0 | 0 | 0 | 0 | 0 | 0 | 0 | 5 | 0 | 0 | 4 | 0 |
| 5 | VINE Cortnee | 3 / 2 | 2 | 1 | 9 | 17 | 2 | 0 | 2 | 0 | 5 | 14 | 5 | 3 | 3 |
| 7 | CATLEY Steph | 1 / 0 | 0 | 3 | 0 | 1 | 2 | 0 | 3 | 5 | 3 | 2 | 1 | 5 | 4 |
| 9 | FOORD Caitlin | 1 / 0 | 3 | 0 | 4 | 19 | 3 | 0 | 4 | 0 | 8 | 19 | 12 | 4 | 1 |
| 10 | VAN EGMOND Emily | 1 / 0 | 5 | 0 | 4 | 33 | 1 | 0 | 1 | 3 | 7 | 21 | 12 | 3 | 6 |
| 14 | KENNEDY Alanna | 0 / 0 | 1 | 2 | 0 | 2 | 6 | 0 | 6 | 7 | 9 | 3 | 1 | 7 | 5 |
| 15 | HUNT Clare | 1 / 1 | 2 | 1 | 0 | 7 | 3 | 0 | 3 | 8 | 10 | 6 | 5 | 9 | 5 |
| 16 | RASO Hayley | 4 / 1 | 2 | 1 | 9 | 13 | 1 | 0 | 3 | 1 | 6 | 13 | 10 | 3 | 5 |
| 19 | GORRY Katrina | 5 / 2 | 1 | 0 | 6 | 12 | 5 | 0 | 7 | 2 | 15 | 13 | 3 | 6 | 2 |
| 21 | CARPENTER Ellie | 4 / 2 | 3 | 1 | 10 | 3 | 0 | 0 | 2 | 5 | 8 | 12 | 6 | 6 | 8 |
| 23 | COONEY-CROSS Kyra | 3 / 2 | 2 | 0 | 5 | 8 | 2 | 0 | 2 | 2 | 10 | 8 | 3 | 2 | 4 |
| 4 | POLKINGHORNE Clare | 1 / 0 | 1 | 0 | 0 | 1 | 1 | 0 | 1 | 2 | 1 | 0 | 0 | 1 | 3 |
| 8 | CHIDIAC Alex | 0 / 0 | 2 | 0 | 0 | 1 | 0 | 0 | 0 | 0 | 2 | 1 | 0 | 0 | 1 |

Out of Possession



| # | Player | Tackles Made / Won | Blocks | Interceptions | Pressing Direct | Pressing Indirect | Duels Won - Aerial | Duels Won - Physical | Possession Contests won | Clearances | Loose Ball Receptions | Pushing On | Pushing On into Pressing | Possession Regains | Possession Interrupted |
|----|-------------------|--------------------|--------|---------------|-----------------|-------------------|--------------------|----------------------|-------------------------|------------|-----------------------|------------|--------------------------|--------------------|------------------------|
| 16 | NNADOZIE Chiamaka | 0 / 0 | 0 | 0 | 0 | 0 | 0 | 0 | 0 | 0 | 5 | 0 | 0 | 15 | 0 |
| 2 | PLUMPTRE Ashleigh | 1 / 0 | 6 | 0 | 1 | 7 | 4 | 0 | 4 | 4 | 8 | 22 | 6 | 4 | 5 |
| 3 | OHALE Osinachi | 2 / 2 | 2 | 1 | 3 | 2 | 2 | 0 | 2 | 8 | 3 | 5 | 2 | 6 | 8 |
| 6 | ONUMONU Ifeoma | 2 / 1 | 0 | 0 | 3 | 17 | 1 | 0 | 2 | 0 | 3 | 13 | 9 | 1 | 0 |
| 7 | PAYNE Toni | 0 / 0 | 3 | 0 | 4 | 17 | 1 | 0 | 3 | 0 | 6 | 9 | 5 | 3 | 1 |
| 10 | UCHEIBE Christy | 10 / 3 | 5 | 0 | 7 | 11 | 2 | 0 | 2 | 6 | 13 | 12 | 4 | 6 | 10 |
| 12 | KANU Uchenna | 3 / 0 | 3 | 0 | 6 | 21 | 3 | 0 | 3 | 2 | 6 | 16 | 10 | 2 | 4 |
| 14 | DEMEHIN Blessing | 1 / 0 | 3 | 0 | 1 | 1 | 1 | 0 | 2 | 9 | 6 | 6 | 1 | 5 | 7 |
| 15 | AJIBADE Rasheedat | 3 / 2 | 4 | 0 | 4 | 31 | 2 | 0 | 3 | 2 | 5 | 19 | 8 | 5 | 3 |
| 18 | AYINDE Halimatu | 6 / 3 | 5 | 1 | 10 | 26 | 0 | 0 | 2 | 3 | 5 | 24 | 14 | 7 | 4 |
| 22 | ALOZIE Michelle | 2 / 1 | 3 | 1 | 2 | 3 | 1 | 0 | 2 | 8 | 7 | 5 | 3 | 5 | 6 |
| 4 | OGBONNA Glory | 1 / 0 | 2 | 0 | 1 | 2 | 0 | 0 | 0 | 4 | 0 | 10 | 3 | 0 | 5 |
| 8 | OSHOALA Asisat | 0 / 0 | 1 | 0 | 1 | 8 | 1 | 0 | 1 | 0 | 6 | 4 | 1 | 1 | 1 |
| 19 | ECHEGINI Jennifer | 1 / 0 | 1 | 0 | 1 | 13 | 1 | 0 | 1 | 3 | 0 | 5 | 3 | 1 | 2 |
| 21 | OKORONKWO Esther | 1 / 0 | 0 | 0 | 1 | 9 | 0 | 0 | 0 | 2 | 1 | 5 | 3 | 2 | 1 |



INDIVIDUAL DATA PHYSICAL



Australia v Nigeria



Physical Data



| # | Player | Total Distance (m) | Zone 1: 0-7 km/h (m) | Zone 2: 7-13km/h (m) | Zone 3: 13-19km/h (m) | Zone 4: 19-23km/h (m) | Zone 5: 23+ km/h (m) | High Speed Runs (Zone 4) | Sprints (Zone 5) | Top Speed (km/h) |
|----|--------------------|--------------------|----------------------|----------------------|-----------------------|-----------------------|----------------------|--------------------------|------------------|------------------|
| 18 | ARNOLD Mackenzie | 5334.8 | 3599.9 | 1315.0 | 393.2 | 26.1 | 0 | 34.0 | 3.0 | 24.5 |
| 5 | VINE Cortnee | 8317.1 | 2967.6 | 2751.3 | 1903.8 | 444.1 | 250.3 | 169.0 | 49.0 | 28.2 |
| 7 | CATLEY Steph | 11314.2 | 3233.6 | 4334.5 | 2945.1 | 557.8 | 243.3 | 202.0 | 43.0 | 26.9 |
| 9 | FOORD Caitlin | 10758.0 | 3799.7 | 3971.9 | 2237.7 | 493.8 | 255.0 | 180.0 | 50.0 | 28.2 |
| 10 | VAN EGMOND Emily | 10682.4 | 3753.8 | 3556.2 | 2943.0 | 369.6 | 59.8 | 223.0 | 30.0 | 27.3 |
| 14 | KENNEDY Alanna | 10168.0 | 3612.7 | 3673.7 | 2360.0 | 426.0 | 95.6 | 176.0 | 31.0 | 27.8 |
| 15 | HUNT Clare | 10102.7 | 3695.6 | 3821.9 | 2096.3 | 355.6 | 132.3 | 163.0 | 32.0 | 30.6 |
| 16 | RASO Hayley | 9367.8 | 3109.2 | 3048.3 | 2470.3 | 502.1 | 237.0 | 195.0 | 49.0 | 27.8 |
| 19 | GORRY Katrina | 11211.9 | 3221.2 | 4302.0 | 3092.3 | 529.2 | 67.3 | 209.0 | 37.0 | 26.3 |
| 21 | CARPENTER Ellie | 10662.2 | 3795.8 | 3053.7 | 2344.6 | 932.9 | 534.2 | 184.0 | 70.0 | 30.2 |
| 23 | COONEY-CROSS Kyra | 10852.3 | 3310.0 | 4249.8 | 2750.0 | 426.5 | 117.2 | 203.0 | 40.0 | 26.9 |
| 4 | POLKINGHORNE Clare | 2129.0 | 771.3 | 770.9 | 459.2 | 92.0 | 35.6 | 35.0 | 6.0 | 27.1 |
| 8 | CHIDIAC Alex | 2108.6 | 642.7 | 654.9 | 557.9 | 215.7 | 37.3 | 48.0 | 14.0 | 25.8 |

Physical Data



| # | Player | Total Distance (m) | Zone 1: 0-7 km/h (m) | Zone 2: 7-13km/h (m) | Zone 3: 13-19km/h (m) | Zone 4: 19-23km/h (m) | Zone 5: 23+ km/h (m) | High Speed Runs (Zone 4) | Sprints (Zone 5) | Top Speed (km/h) |
|----|-------------------|--------------------|----------------------|----------------------|-----------------------|-----------------------|----------------------|--------------------------|------------------|------------------|
| 16 | NNADOZIE Chiamaka | 3943.3 | 3227.6 | 552.5 | 136.4 | 26.4 | 0 | 19.0 | 2.0 | 20.9 |
| 2 | PLUMPTRE Ashleigh | 8023.2 | 2776.0 | 3065.6 | 1778.7 | 324.9 | 77.8 | 143.0 | 26.0 | 26.8 |
| 3 | OHALE Osinachi | 8902.0 | 3511.9 | 3779.8 | 1244.5 | 268.8 | 96.1 | 120.0 | 24.0 | 25.9 |
| 6 | ONUMONU Ifeoma | 7126.3 | 2403.7 | 2584.0 | 1514.3 | 461.1 | 163.2 | 118.0 | 34.0 | 29.2 |
| 7 | PAYNE Toni | 9454.5 | 3054.8 | 3655.1 | 1954.3 | 567.3 | 224.1 | 151.0 | 38.0 | 29.0 |
| 10 | UCHEIBE Christy | 11789.2 | 3945.8 | 4227.6 | 2881.3 | 489.3 | 245.2 | 230.0 | 50.0 | 29.9 |
| 12 | KANU Uchenna | 7448.4 | 2379.0 | 2539.9 | 1613.3 | 493.8 | 422.3 | 148.0 | 52.0 | 30.8 |
| 14 | DEMEHIN Blessing | 8907.8 | 3691.4 | 3649.5 | 1129.5 | 362.5 | 74.8 | 118.0 | 28.0 | 27.3 |
| 15 | AJIBADE Rasheedat | 11130.2 | 4044.7 | 3627.3 | 2511.0 | 655.6 | 290.5 | 190.0 | 58.0 | 28.6 |
| 18 | AYINDE Halimatu | 7631.6 | 2690.2 | 2362.8 | 2049.9 | 323.6 | 205.3 | 168.0 | 35.0 | 30.9 |
| 22 | ALozIE Michelle | 10441.3 | 3476.9 | 4359.2 | 2007.9 | 443.8 | 153.5 | 183.0 | 48.0 | 28.7 |
| 4 | OGBONNA Glory | 2455.8 | 921.2 | 985.0 | 435.2 | 86.7 | 27.5 | 37.0 | 8.0 | 26.6 |
| 8 | OSHOALA Asisat | 3776.8 | 1673.5 | 970.6 | 761.4 | 243.6 | 127.7 | 60.0 | 19.0 | 29.5 |
| 19 | ECHEGINI Jennifer | 3065.8 | 951.6 | 963.3 | 747.7 | 278.7 | 124.2 | 63.0 | 19.0 | 27.9 |
| 21 | OKORONKWO Esther | 4357.5 | 1237.1 | 1435.4 | 1319.9 | 278.0 | 87.2 | 85.0 | 21.0 | 26.7 |

