



Switzerland 0 - 0 Norway

Group A - Match 18
25 July 2023
20:00 Kick Off
Waikato Stadium

POST MATCH SUMMARY REPORT

Match Summary - Teams

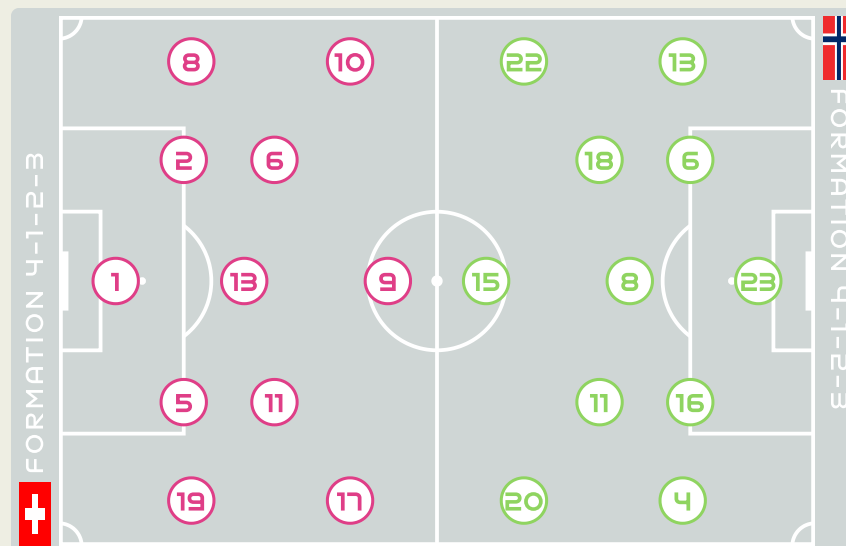


STARTING

1	GK	THALMANN Gaelle	
2	DF	STIERLI Julia	
5	DF	MARITZ Noelle	
6	MF	REUTELER Geraldine	↓ 78'
8	DF	RIESEN Nadine	
9	FW	CRNOGORCEVIC Ana Maria	
10	FW	BACHMANN Ramona	↓ 90+3'
11	MF	SOW Coumba	
13	MF	WAEELTI Lia (C)	
17	MF	PIUBEL Seraina	↓ 88'
19	DF	AIGBOGUN Eseosa	

SUBSTITUTES

12	GK	PENG Livia	
21	GK	FRIEDLI Seraina	
3	DF	MARTI Lara	
4	DF	FELBER Laura	
7	MF	ARFAOUI Amira	
14	DF	REY Marion	↑ 90+3'
15	DF	BUEHLER Luana	
16	MF	MAURON Sandrine	↑ 78'
18	DF	CALLIGARIS Viola	
20	FW	HUMM Fabienne	
22	FW	TERCHOUN Meriam	↑ 88'
23	FW	LEHMANN Alisha	



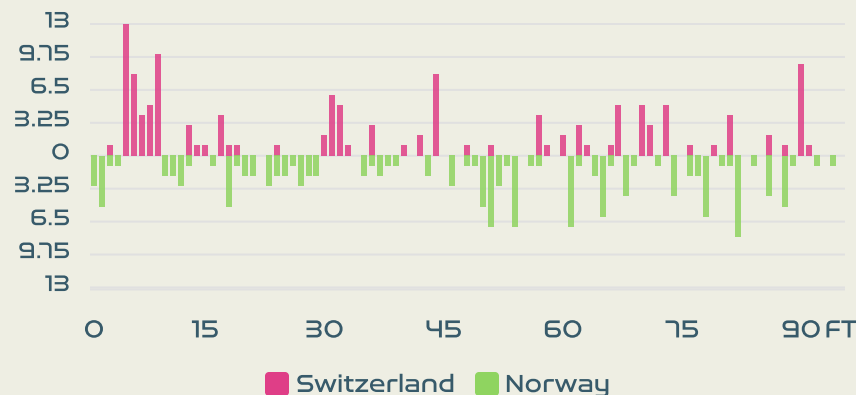
STARTING

		MIKALSEN Aurora	GK	23	
↓ 73'		HANSEN Tuva	DF	4	
		(C) MJELDE Maren	DF	6	
↓ 88'		BOE RISA Vilde	MF	8	
		REITEN Guro	MF	11	
↓ 88'		BJELDE Thea	DF	13	
↓ 57'		EIKELAND Amalie	FW	15	
		HARVIKEN Mathilde	DF	16	
		MAANUM Frida	MF	18	
		HAAVI Emilie	FW	20	
↓ 73'		ROMAN HAUG Sophie	FW	22	

SUBSTITUTES

		FISKERSTRAND Cecilie	GK	1	
		PETERSEN Guro	GK	12	
↑ 73'		SONSTEVOLD Anja	DF	2	
		HORTE Sara	DF	3	
		BERGSVAND Guro	DF	5	
↑ 88'		SYRSTAD ENGEN Ingrid	MF	7	
		SAEVIK Karina	FW	9	
↑ 57'		GRAHAM HANSEN Caroline	FW	10	
		HEGERBERG Ada	FW	14	
		BLAKSTAD Julie	FW	17	
↑ 88'		BRATBERG LUND Marit	DF	19	
		JOSENDAL Anna	FW	21	

Distribution in the Final Third



Match Summary - Key Statistics



Possession

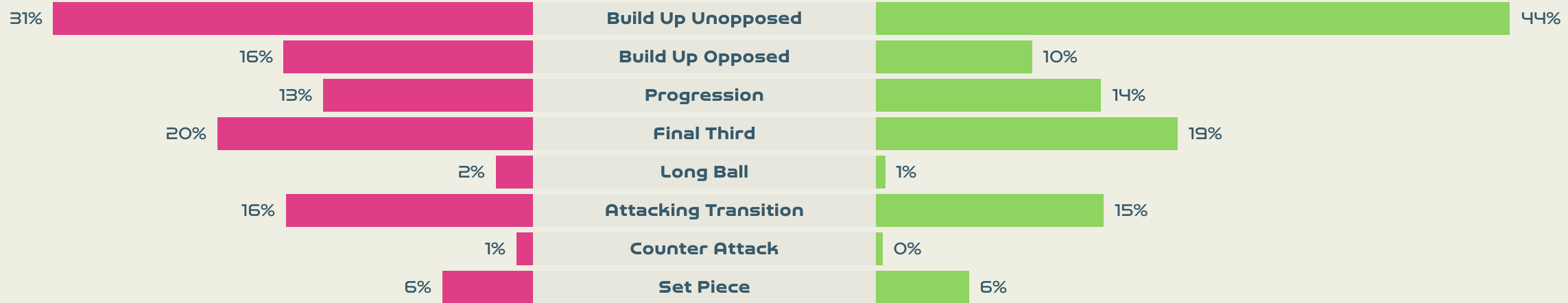
Total	44.2%	10.5%	45.3%	Total
0	Goals			0
6 (1)	Attempts at Goal (On Target)			13 (5)
502 (411)	Total Passes (Complete)			482 (405)
82 %	Pass Completion %			84 %
77	Completed Line Breaks			79
4	Defensive Line Breaks			8
99	Receptions in the Final Third			117
11	Crosses			25
21	Ball Progressions			20
185 (42)	Defensive Pressures Applied (Direct Pressures)			247 (61)
71	Forced Turnovers			76
89	Second Balls			80
112.1 km	Total Distance Covered			112.7 km
4.1 km	Zone 4 - Low Speed Sprinting: 19-23km/h			5.1 km



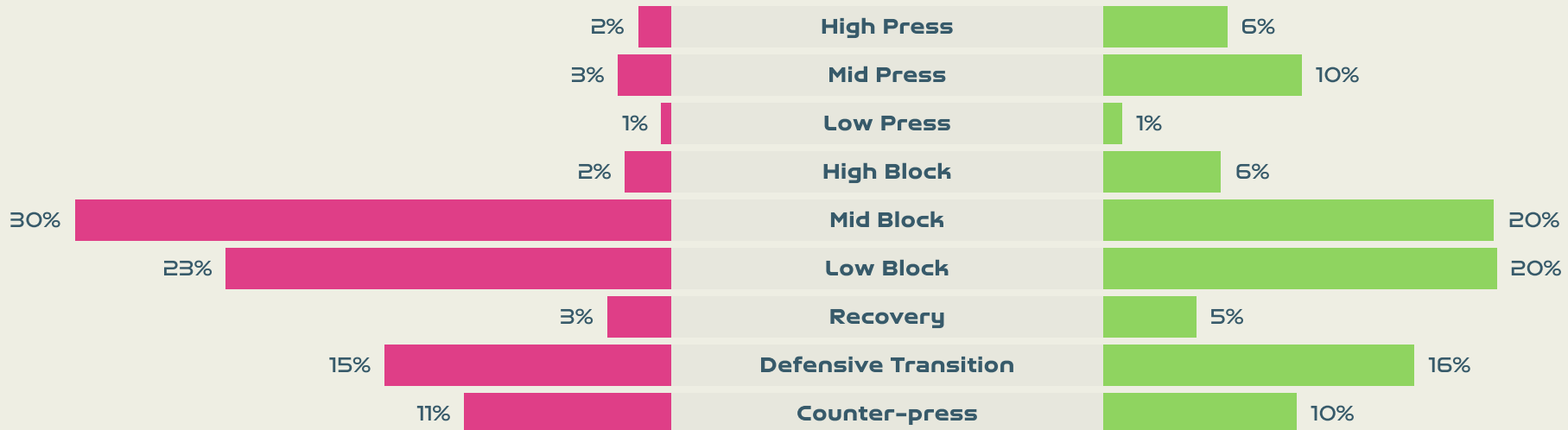
Phases of Play



IN POSSESSION



OUT OF POSSESSION





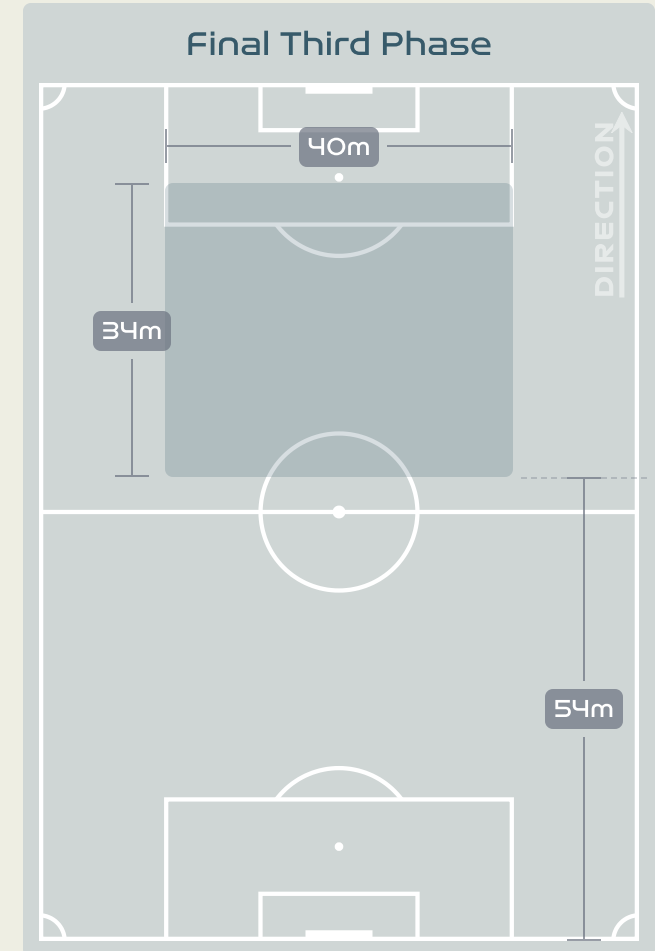
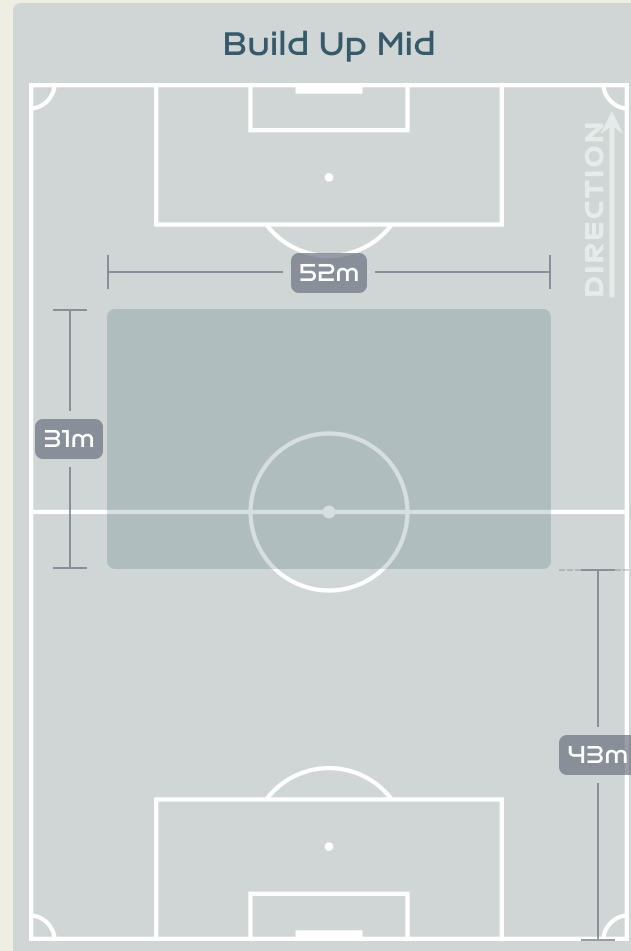
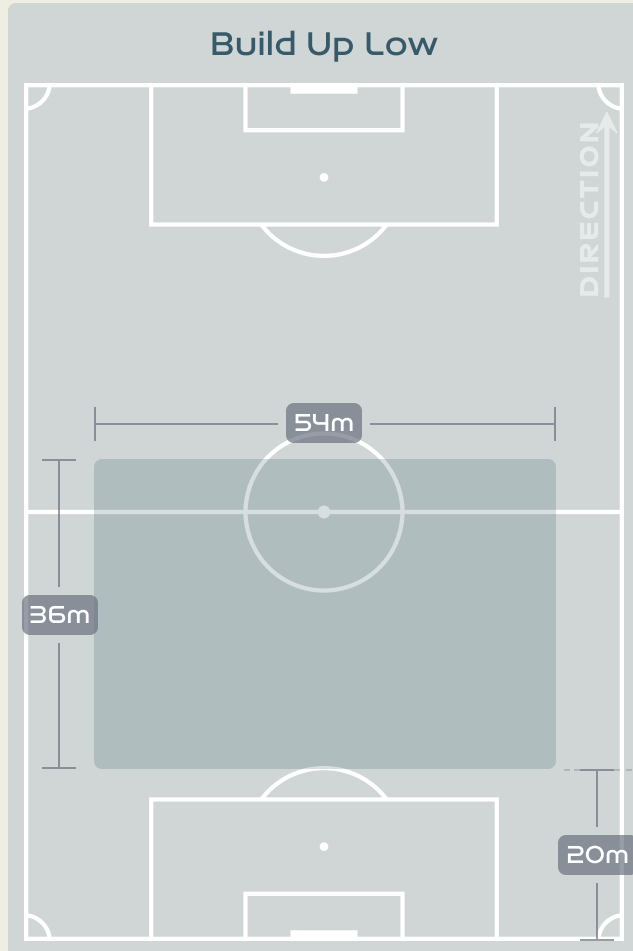
IN POSSESSION



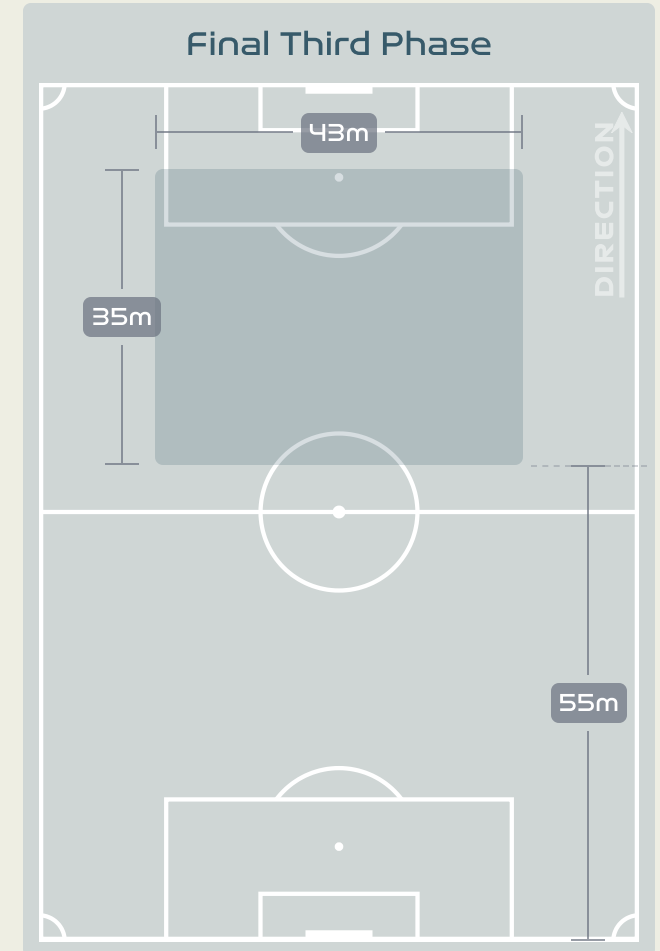
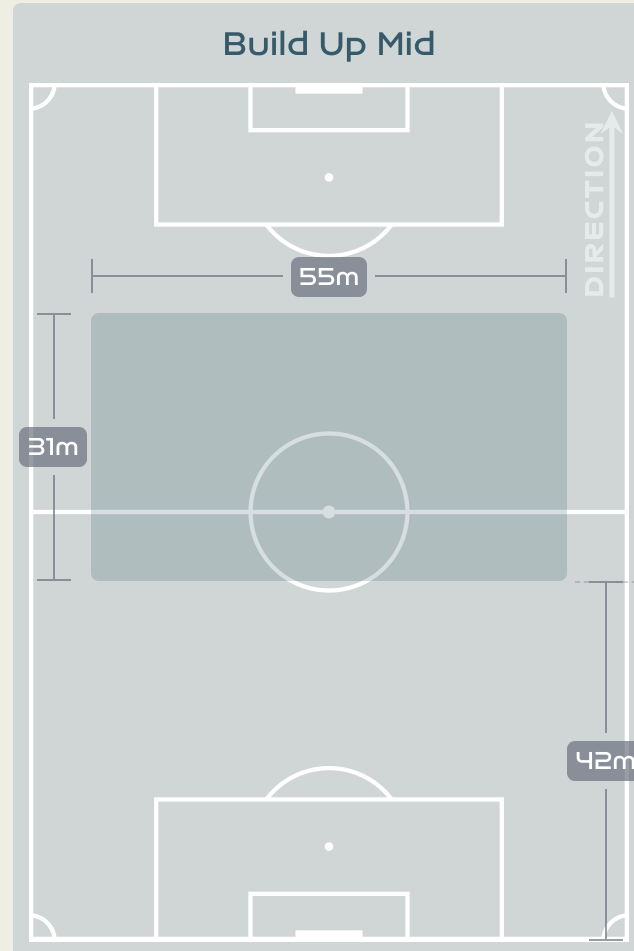
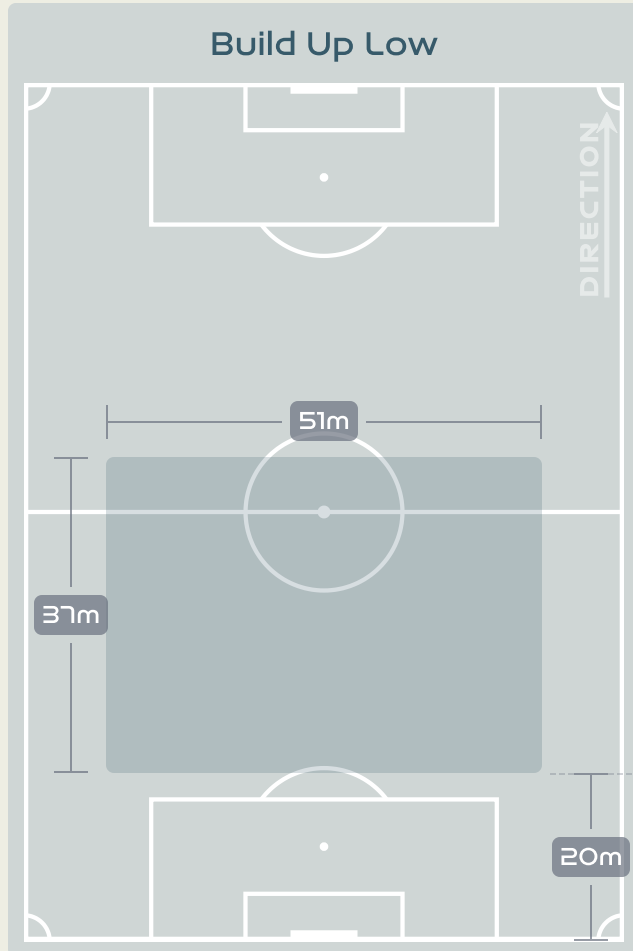
Switzerland v Norway



In Possession Line Height & Team Length



In Possession Line Height & Team Length

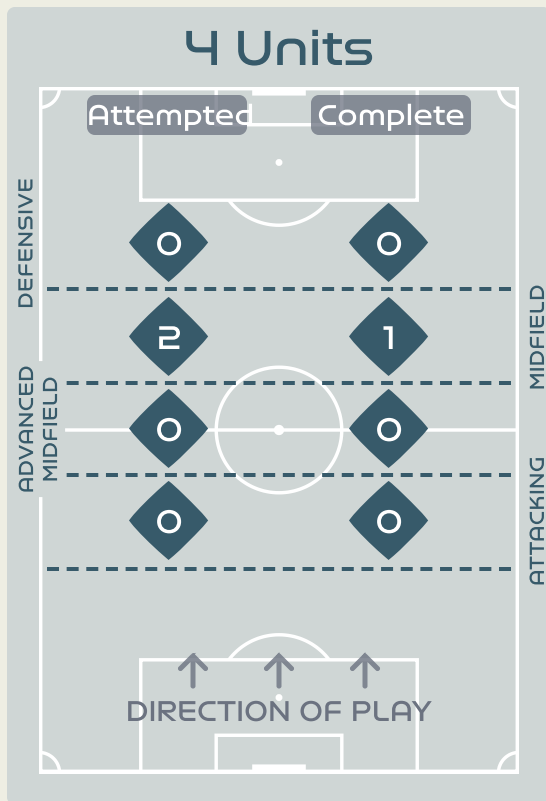
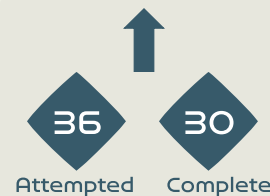


Line Breaks

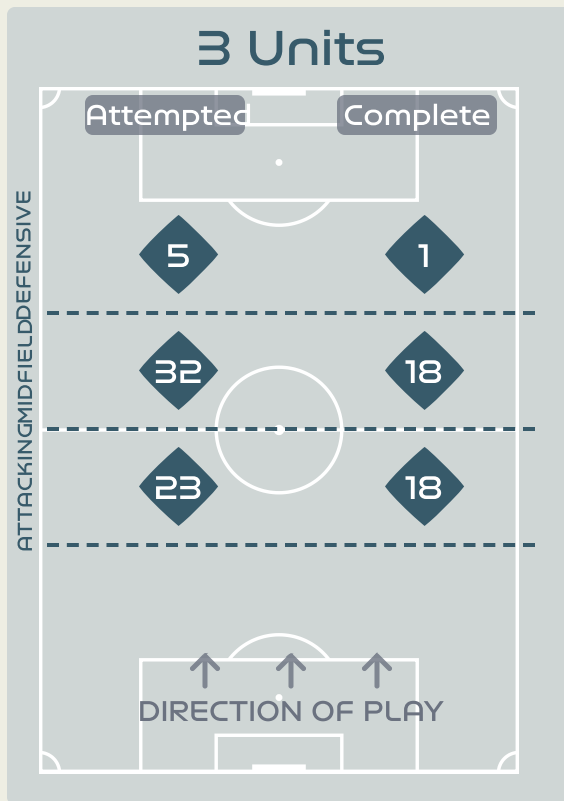


Attempted Line Breaks

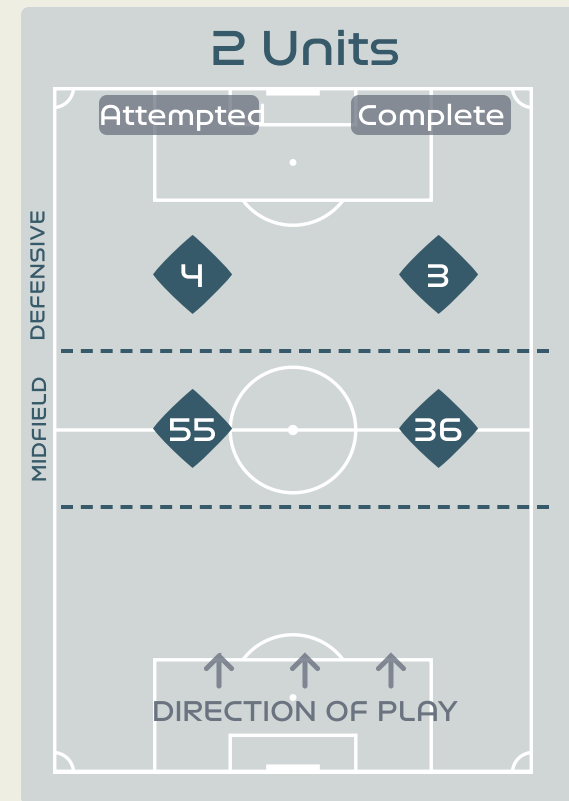
121



Attempted Line Breaks 2
 Inside Shape 1
 Outside Shape 1



Attempted Line Breaks 60
 Inside Shape 42
 Outside Shape 18



Attempted Line Breaks 59
 Inside Shape 44
 Outside Shape 15

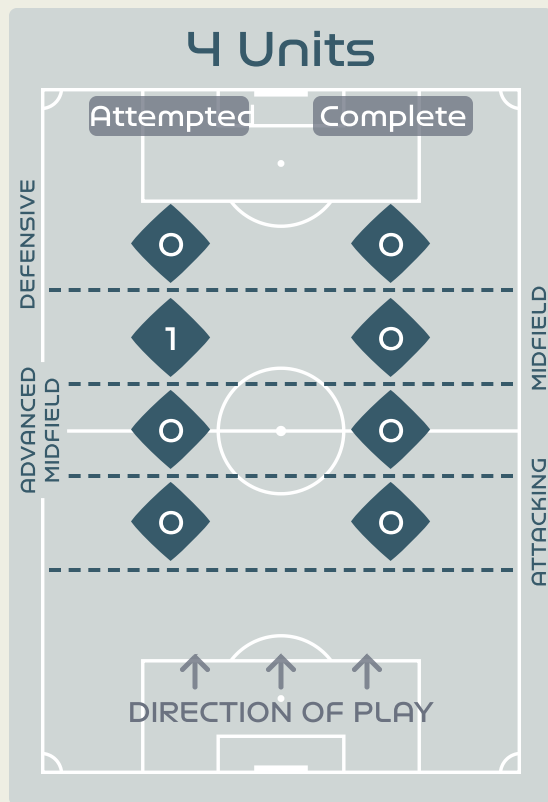
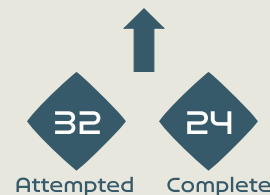
Line Breaks



Norway

Attempted Line Breaks

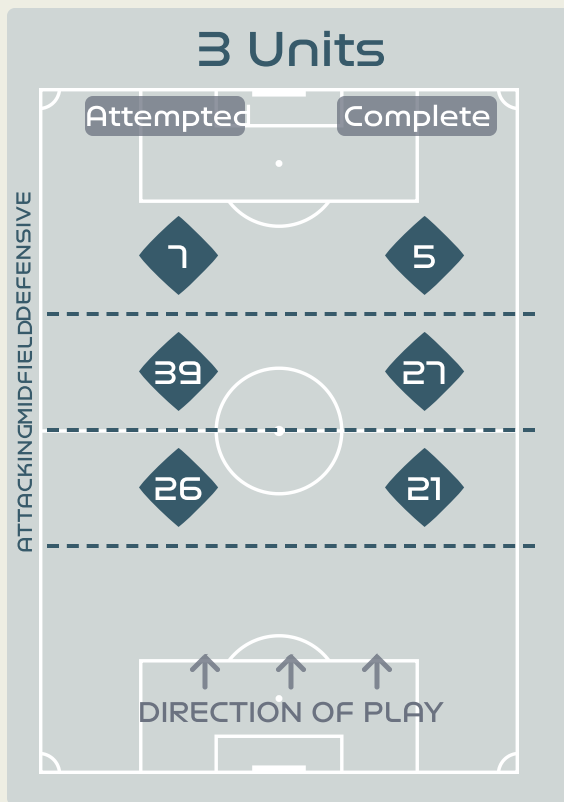
111



Attempted Line Breaks 1

Inside Shape 1

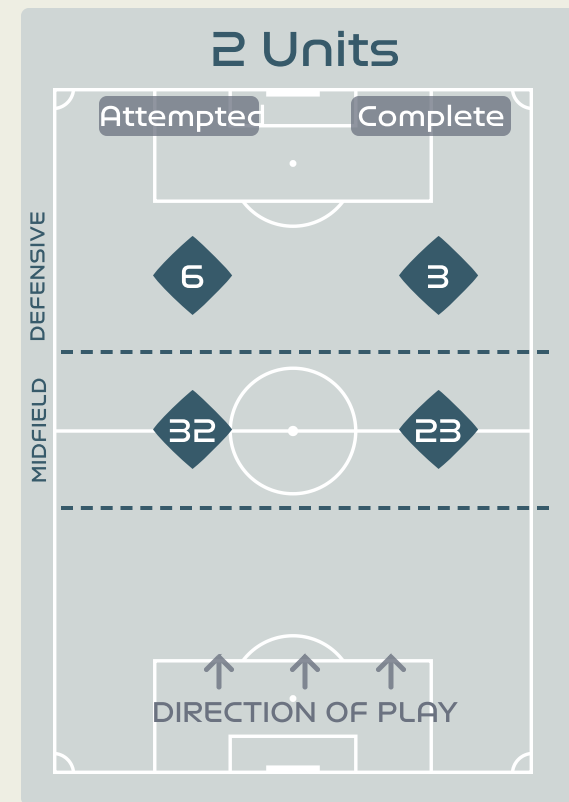
Outside Shape 0



Attempted Line Breaks 72

Inside Shape 46

Outside Shape 26



Attempted Line Breaks 38

Inside Shape 23

Outside Shape 15

Line Breaks



					4 Units				3 Units			2 Units		Direction			Distribution Type		
#	Player	Line Breaks Attempted	Line Breaks Completed	Line Break Completion %	Attacking Line	Attacking Midfield Line	Midfield Line	Defensive Line	Attacking Line	Midfield Line	Defensive Line	Midfield Line	Defensive Line	Through	Around	Over	Pass	Cross	Ball Progression
1	THALMANN Gaelle	6	3	50%	0	0	0	0	1	1	0	4	0	0	0	6	6	0	0
2	STIERLI Julia	18	7	38%	0	0	1	0	4	8	0	5	0	0	3	15	18	0	0
5	MARITZ Noelle	15	9	60%	0	0	0	0	4	6	0	5	0	0	7	8	15	0	0
6	REUTELER Geraldine	8	8	100%	0	0	0	0	4	1	0	3	0	4	3	1	8	0	0
8	RIESEN Nadine	12	7	58%	0	0	0	0	3	0	1	7	1	2	5	5	9	2	1
9	CRNOGORCEVIC Ana Maria	6	2	33%	0	0	0	0	0	1	2	2	1	3	3	0	3	0	3
10	BACHMANN Ramona	11	10	90%	0	0	0	0	0	2	0	9	0	7	2	2	11	0	0
11	SOW Coumba	7	5	71%	0	0	0	0	2	2	0	3	0	6	0	1	7	0	0
13	WAELTI Lia	17	15	88%	0	0	1	0	3	1	1	10	1	10	4	3	16	0	1
17	PIUBEL Seraina	3	2	66%	0	0	0	0	0	1	1	0	1	0	2	1	3	0	0
19	AIGBOGUN Eseosa	16	7	43%	0	0	0	0	1	8	0	7	0	2	5	9	16	0	0
14	REY Marion	0	0	0%	0	0	0	0	0	0	0	0	0	0	0	0	0	0	0
16	MAURON Sandrine	1	1	100%	0	0	0	0	1	0	0	0	0	1	0	0	1	0	0
22	TERCHOUN Merieme	1	1	100%	0	0	0	0	0	1	0	0	0	1	0	0	1	0	0

Line Breaks



					4 Units				3 Units			2 Units		Direction			Distribution Type		
#	Player	Line Breaks Attempted	Line Breaks Completed	Line Break Completion %	Attacking Line	Attacking Midfield Line	Midfield Line	Defensive Line	Attacking Line	Midfield Line	Defensive Line	Midfield Line	Defensive Line	Through	Around	Over	Pass	Cross	Ball Progression
23	MIKALSEN Aurora	4	1	25%	0	0	0	0	2	1	0	1	0	0	0	4	4	0	0
4	HANSEN Tuva	9	7	77%	0	0	0	0	3	4	0	2	0	2	4	3	9	0	0
6	MJELDE Maren	8	7	87%	0	0	0	0	2	2	1	3	0	2	2	4	8	0	0
8	BOE RISA Vilde	27	24	88%	0	0	0	0	8	7	1	11	0	10	9	8	27	0	0
11	REITEN Guro	12	6	50%	0	0	1	0	1	7	1	2	0	2	2	8	12	0	0
13	BJELDE Thea	9	6	66%	0	0	0	0	2	5	1	1	0	2	3	4	8	0	1
15	EIKELAND Amalie	5	4	80%	0	0	0	0	0	1	1	2	1	0	3	2	3	0	2
16	HARVIKEN Mathilde	12	9	75%	0	0	0	0	7	3	0	2	0	5	4	3	12	0	0
18	MAANUM Frida	7	5	71%	0	0	0	0	0	3	2	0	2	3	0	4	5	1	1
20	HAAVI Emilie	10	5	50%	0	0	0	0	1	3	0	4	2	6	1	3	7	2	1
22	ROMAN HAUG Sophie	1	1	100%	0	0	0	0	0	1	0	0	0	0	1	0	1	0	0
2	SONSTEVOLD Anja	1	1	100%	0	0	0	0	0	0	0	1	0	0	1	0	1	0	0
7	SYRSTAD ENGEN Ingrid	0	0	0%	0	0	0	0	0	0	0	0	0	0	0	0	0	0	0
9	SAEVIK Karina	0	0	0%	0	0	0	0	0	0	0	0	0	0	0	0	0	0	0
10	GRAHAM HANSEN Caroline	5	3	60%	0	0	0	0	0	1	0	3	1	0	3	2	3	2	0
19	BRATBERG LUND Marit	1	0	0%	0	0	0	0	0	1	0	0	0	0	1	0	1	0	0

Passing Networks



#	Passes From ↓ to →	THALMANN Gaelle	STIERLI Julia	MARITZ Noelle	REUTELER Geraldine	RIESEN Nadine	CRNOGORCEVIC Ana Maria	BACHMANN Ramona	SOW Coumba	WAELTI Lia	PIUBEL Seraina	AIGBOGUN Eseosa	REY Marion	MAURON Sandrine	TERCHOUN Merieme
1	THALMANN Gaelle		14	14	0	0	0	0	0	0	0	0	0	0	0
2	STIERLI Julia	5		12	9	10	0	3	0	1	2	0	0	0	0
5	MARITZ Noelle	2	16		2	0	3	4	3	7	2	10	0	0	0
6	REUTELER Geraldine	1	7	5		6	4	6	1	6	1	0	0	0	0
8	RIESEN Nadine	0	3	0	7		1	2	0	6	0	0	0	1	0
9	CRNOGORCEVIC Ana Maria	0	1	2	0	0		2	5	0	2	1	0	0	0
10	BACHMANN Ramona	0	1	2	7	1	4		11	9	3	4	0	1	0
11	SOW Coumba	1	0	0	1	2	3	8		4	2	13	0	1	0
13	WAELTI Lia	3	8	10	4	8	3	7	4		0	7	0	0	2
17	PIUBEL Seraina	0	0	1	4	0	0	5	2	2		3	0	0	0
19	AIGBOGUN Eseosa	0	0	11	0	0	2	4	2	9	4		0	0	1
14	REY Marion	0	0	0	0	0	0	0	0	0	0	0		0	0
16	MAURON Sandrine	0	0	0	0	3	1	1	0	0	0	0	0		0
22	TERCHOUN Merieme	0	0	1	0	0	1	1	0	0	0	0	0	0	

Top 5 Player to Player Passers

Player	Passed To	% of Total Team Passes
MARITZ Noelle	STIERLI Julia	4.2%
THALMANN Gaelle	MARITZ Noelle	3.7%
THALMANN Gaelle	STIERLI Julia	3.7%
SOW Coumba	AIGBOGUN Eseosa	3.4%
STIERLI Julia	MARITZ Noelle	3.1%

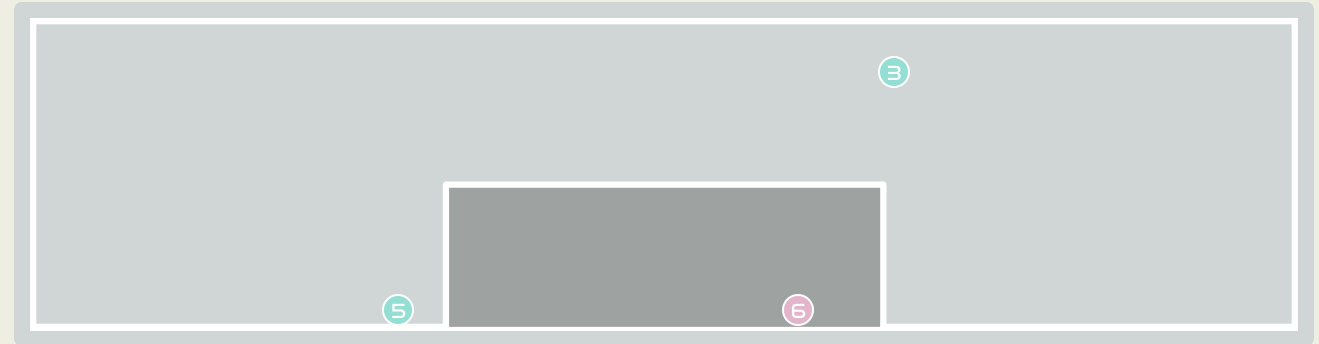
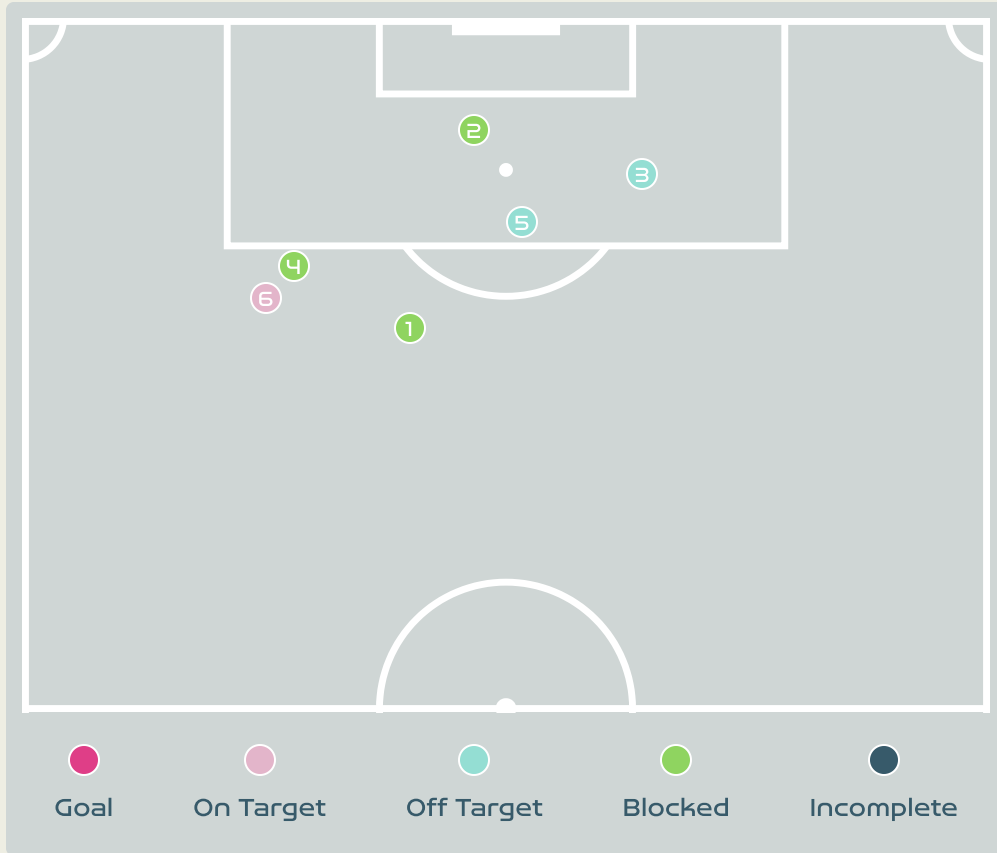
Passing Networks








#	Passes From ↓ to →	MIKALSEN Aurora	HANSEN Tuva	MJELDE Maren	BOE RISA Vilde	REITEN Guro	BJELDE Thea	EIKELAND Amalie	HARVIKEN Mathilde	MAANUM Frida	HAAVI Emilie	ROMAN HAUG Sophie	SONSTEVOLD Anja	SYRSTAD ENGEN Ingrid	SAEVIK Karina	GRAHAM HANSEN Caroline	BRATBERG LUND Marit
23	MIKALSEN Aurora		0	7	0	0	1	0	4	0	1	0	1	0	0	0	1
4	HANSEN Tuva	0		0	5	4	0	0	6	0	7	0	0	0	0	0	0
6	MJELDE Maren	2	1		25	1	6	1	36	10	0	0	1	0	0	0	0
8	BOE RISA Vilde	1	7	15		8	10	1	7	4	8	2	2	0	0	6	0
11	REITEN Guro	0	4	5	1		0	0	2	2	4	2	1	0	0	0	0
13	BJELDE Thea	0	0	11	3	0		1	1	3	1	2	0	0	0	1	0
15	EIKELAND Amalie	0	0	0	2	3	3		1	1	0	0	0	0	0	0	0
16	HARVIKEN Mathilde	3	7	33	17	10	2	1		1	2	0	1	1	0	0	1
18	MAANUM Frida	0	0	1	6	1	3	2	2		1	1	0	0	0	5	0
20	HAAVI Emilie	0	2	1	0	6	1	0	0	0		0	0	0	0	0	0
22	ROMAN HAUG Sophie	0	0	0	0	1	0	2	0	2	2		0	0	0	0	0
2	SONSTEVOLD Anja	0	0	1	0	0	0	0	2	0	2	0		0	0	0	0
7	SYRSTAD ENGEN Ingrid	0	0	1	0	0	0	0	1	0	0	0	0		0	0	0
9	SAEVIK Karina	0	0	0	0	0	0	0	0	0	0	0	0	0		0	0
10	GRAHAM HANSEN Caroline	0	0	1	3	0	2	0	0	2	0	1	0	1	0		0
19	BRATBERG LUND Marit	0	0	0	0	0	0	0	1	0	0	0	0	0	0	0	

Top 5 Player to Player Passers		
Player	Passed To	% of Total Team Passes
MJELDE Maren	HARVIKEN Mathilde	9.4%
HARVIKEN Mathilde	MJELDE Maren	8.7%
MJELDE Maren	BOE RISA Vilde	6.6%
HARVIKEN Mathilde	BOE RISA Vilde	4.5%
BOE RISA Vilde	MJELDE Maren	3.9%

Attempts at Goal



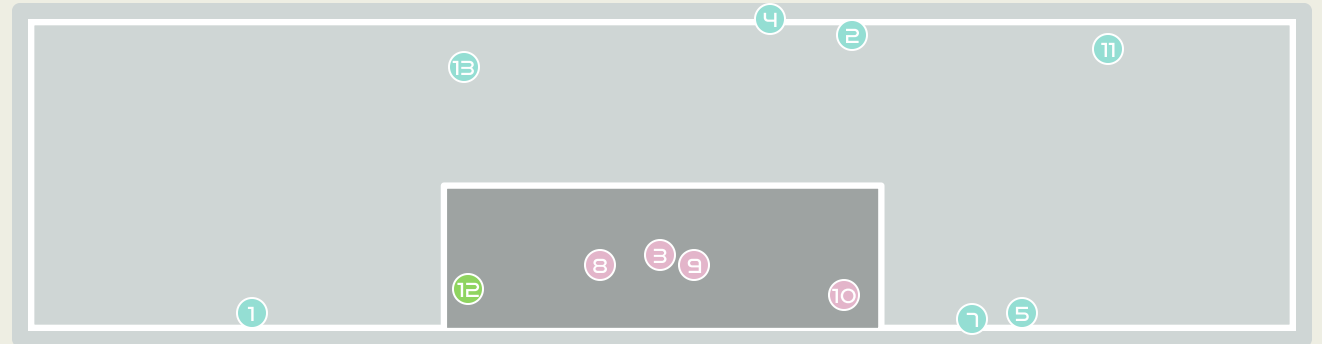
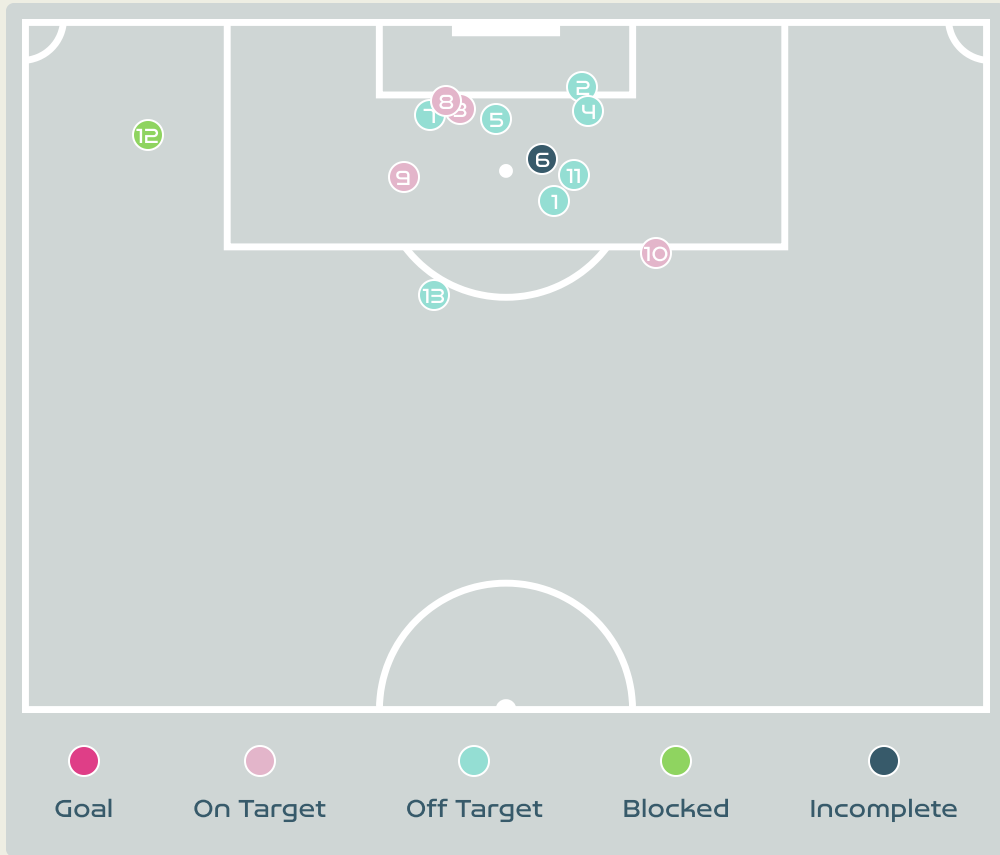
Key	Outcome	Shots
	Goals	0
	On Target	1
	Off Target	2
	Blocked	3
	Incomplete	0






Attempts at Goal



Time	Player	Outcome	Body Part	Delivery Type
6	11 SOW Coumba	Incomplete - Blocked	Right Foot	Loose Ball
7	10 BACHMANN Ramona	Incomplete - Blocked	Right Foot	Loose Ball
31	9 CRNOGORCEVIC Ana Maria	Off Target	Right Foot	Pass
45	8 RIESEN Nadine	Incomplete - Blocked	Right Foot	Pass
63	10 BACHMANN Ramona	Off Target	Left Foot	Ball Progression
71	6 REUTELER Geraldine	On Target - Saved	Right Foot	Pass

Attempts at Goal



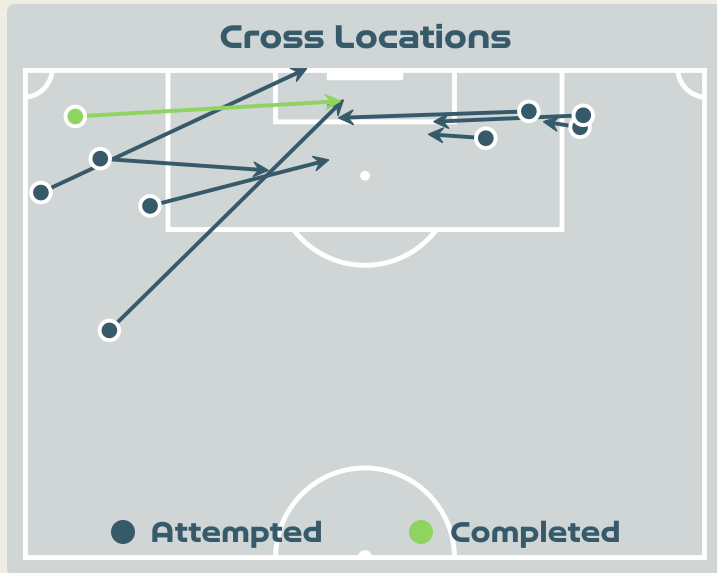
Key	Outcome	Shots
	Goals	0
	On Target	4
	Off Target	7
	Blocked	1
	Incomplete	1

Attempts at Goal

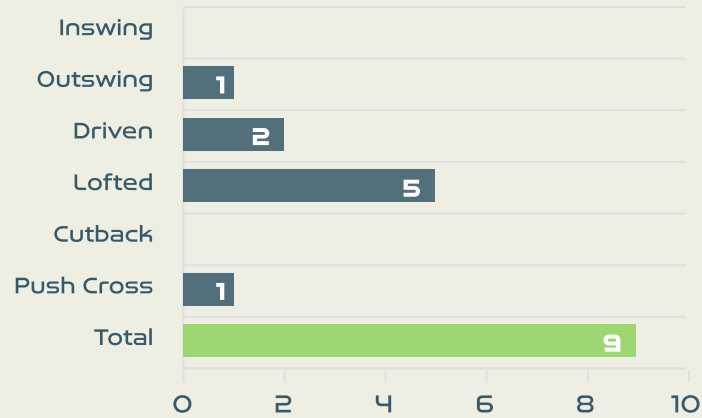


Time	Player	Outcome	Body Part	Delivery Type
13	22 ROMAN HAUG Sophie	Off Target	Head	Cross
21	6 MJELDE Maren	Off Target	Right Foot	Loose Ball
23	22 ROMAN HAUG Sophie	On Target - Saved	Head	Cross
23	15 EIKELAND Amalie	Off Target	Right Foot	Other
29	22 ROMAN HAUG Sophie	Off Target	Head	Cross
46	22 ROMAN HAUG Sophie	Incomplete	Left Foot	Cross
46	18 MAANUM Frida	Off Target	Right Foot	Loose Ball
49	6 MJELDE Maren	On Target - Saved	Head	Corner
54	22 ROMAN HAUG Sophie	On Target - Saved	Right Foot	Loose Ball
74	10 GRAHAM HANSEN Caroline	On Target - Saved	Left Foot	Pass
77	8 BOE RISA Vilde	Off Target	Right Foot	Pass
84	10 GRAHAM HANSEN Caroline	On Target - Blocked	Right Foot	Freekick
85	10 GRAHAM HANSEN Caroline	Off Target	Right Foot	Freekick

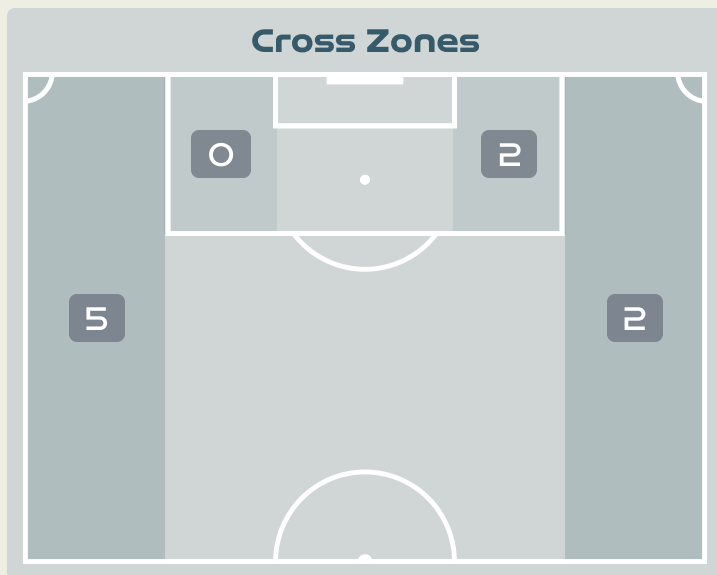
Crosses (Open Play)



Delivery Type



#	Player	Inswing	Outswing	Driven	Lofted	Cutback	Push Cross	Total Attempted
1	THALMANN Gaelle	0	0	0	0	0	0	0
2	STIERLI Julia	0	0	0	0	0	0	0
5	MARITZ Noelle	0	0	0	0	0	0	0
6	REUTELER Geraldine	0	0	0	1	0	0	1
8	RIESEN Nadine	0	0	0	2	0	0	2
9	CRNOGORCEVIC Ana Maria	0	1	0	1	0	0	2
10	BACHMANN Ramona	0	0	0	1	0	1	2
11	SOW Coumba	0	0	2	0	0	0	2
13	WELTI Lia	0	0	0	0	0	0	0
17	PIUBEL Seraina	0	0	0	0	0	0	0
19	AIGBOGUN Eseosa	0	0	0	0	0	0	0
14	REY Marion	0	0	0	0	0	0	0
16	MAURON Sandrine	0	0	0	0	0	0	0
22	TERCHOUN Merieme	0	0	0	0	0	0	0



Attempted

9

Completed

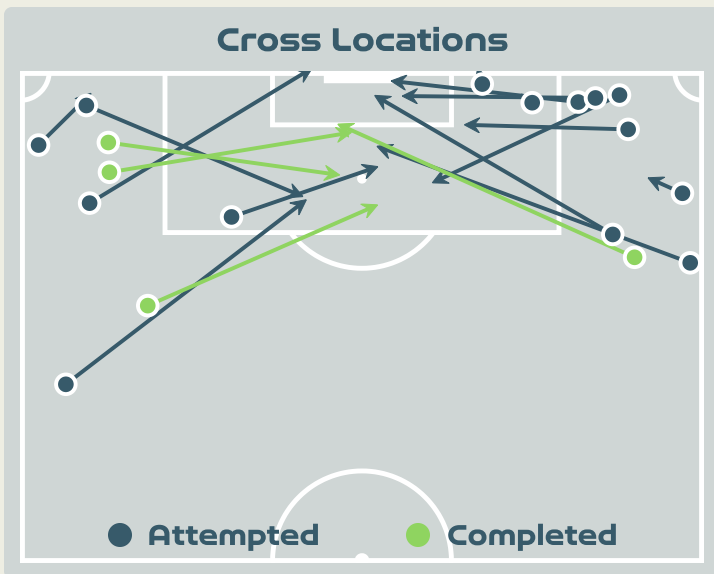
1

Most Crosses Attempted

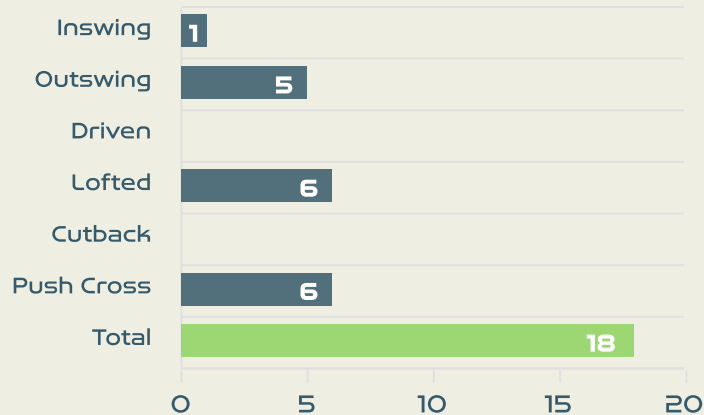
2

CRNOGORCEVIC Ana Maria
CENTRE FORWARD

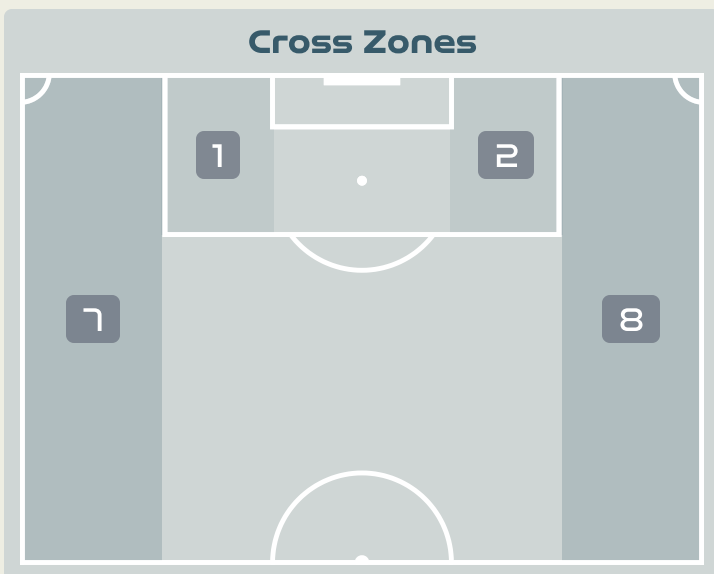
Crosses (Open Play)



Delivery Type



#	Player	Inswing	Outswing	Driven	Lofted	Cutback	Push Cross	Total Attempted
23	MIKALSEN Aurora	0	0	0	0	0	0	0
4	HANSEN Tuva	0	0	0	0	0	1	1
6	MJELDE Maren	0	0	0	0	0	0	0
8	BOE RISA Vilde	0	0	0	0	0	0	0
11	REITEN Guro	0	0	0	1	0	0	1
13	BJELDE Thea	0	0	0	0	0	0	0
15	EIKELAND Amalie	0	0	0	1	0	0	1
16	HARVIKEN Mathilde	0	0	0	0	0	0	0
18	MAANUM Frida	0	1	0	2	0	4	7
20	HAABI Emilie	1	2	0	2	0	1	6
22	ROMAN HAUG Sophie	0	0	0	0	0	0	0
2	SONSTEVOLD Anja	0	0	0	0	0	0	0
7	SYRSTAD ENGEN Ingrid	0	0	0	0	0	0	0
9	SAEVIK Karina	0	0	0	0	0	0	0
10	GRAHAM HANSEN Caroline	0	2	0	0	0	0	2
19	BRATBERG LUND Marit	0	0	0	0	0	0	0



Attempted

18

Completed

4

Most Crosses Attempted

7

MAANUM Frida
RIGHT CENTRE MIDFIELD

Offering to Receive

494

Total Offers Made

167

Total Offers Received

Most Offers

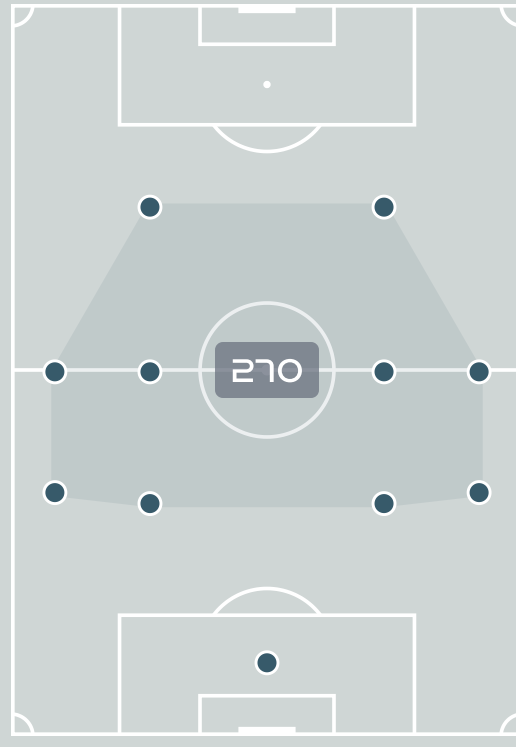
91

BACHMANN Ramona
LEFT WINGER

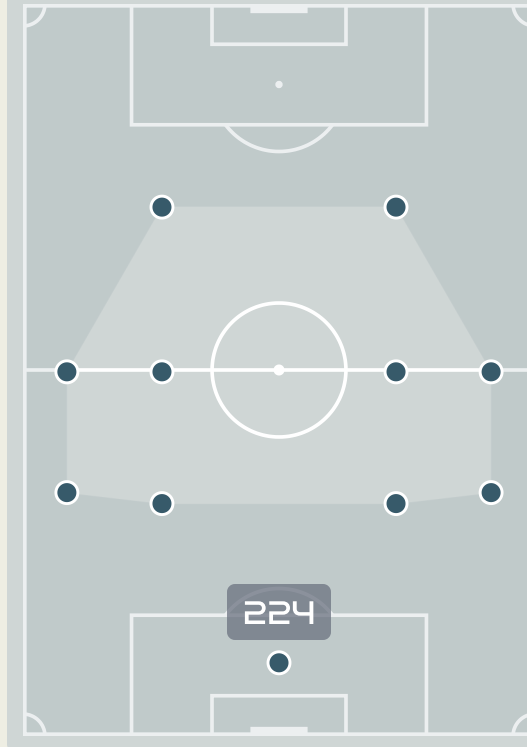
175

Offers Made in Final Third

Offers Made Inside Shape



Offers Made Outside Shape



233

Offers Made in Middle Third

86

Offers Made in Defensive Third

#	Player	Offers Made	Offers Received	% Made & Received
1	THALMANN Gaelle	24	4	16.7%
2	STIERLI Julia	17	9	52.9%
5	MARITZ Noelle	24	12	50%
6	REUTELER Geraldine	73	28	38.4%
8	RIESEN Nadine	33	11	33.3%
9	CRNOGORCEVIC Ana Maria	33	11	33.3%
10	BACHMANN Ramona	91	24	26.4%
11	SOW Coumba	39	19	48.7%
13	WAELTI Lia	82	29	35.4%
17	PIUBEL Seraina	28	4	14.3%
19	AIGBOGUN Eseosa	35	11	31.4%
14	REY Marion	0	0	0%
16	MAURON Sandrine	9	4	44.4%
22	TERCHOUN Meriame	6	1	16.7%

Offering to Receive

441

Total Offers Made

169

Total Offers Received

Most Offers

79

HARVIKEN Mathilde
LEFT CENTRE BACK

184

Offers Made in Final Third

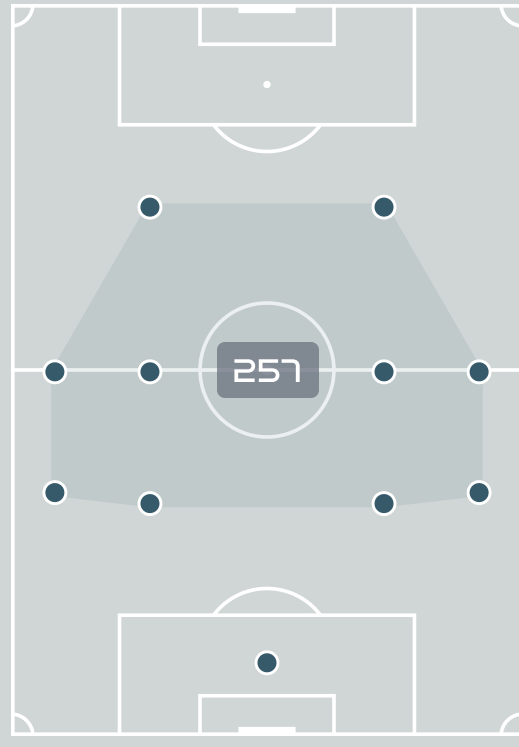
201

Offers Made in Middle Third

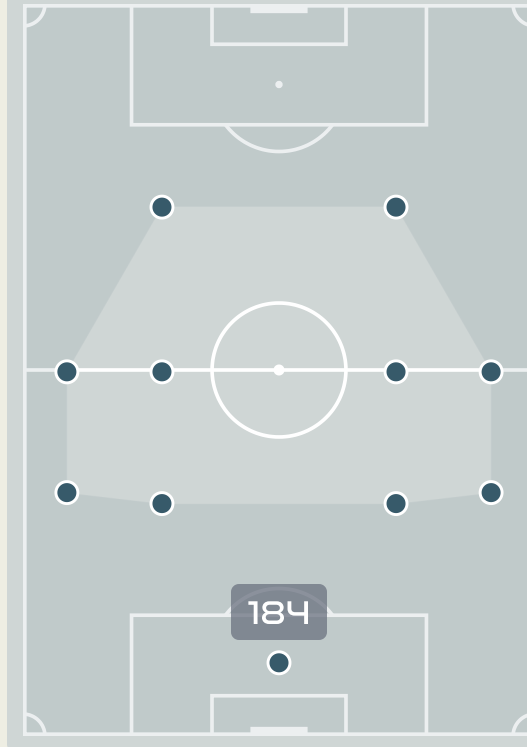
56

Offers Made in Defensive Third

Offers Made Inside Shape



Offers Made Outside Shape

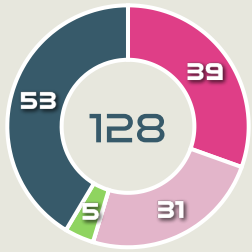


#	Player	Offers Made	Offers Received	% Made & Received
23	MIKALSEN Aurora	5	1	20%
4	HANSEN Tuva	26	11	42.3%
6	MJELDE Maren	3	1	33.3%
8	BOE RISA Vilde	47	30	63.8%
11	REITEN Guro	43	23	53.5%
13	BJELDE Thea	29	10	34.5%
15	EIKELAND Amalie	37	4	10.8%
16	HARVIKEN Mathilde	79	51	64.6%
18	MAANUM Frida	79	17	21.5%
20	HAABI Emilie	25	8	32%
22	ROMAN HAUG Sophie	26	2	7.7%
2	SONSTEVOLD Anja	10	4	40%
7	SYRSTAD ENGEN Ingrid	3	1	33.3%
9	SAEVIK Karina	11	0	0%
10	GRAHAM HANSEN Caroline	18	6	33.3%
19	BRATBERG LUND Marit	0	0	0%

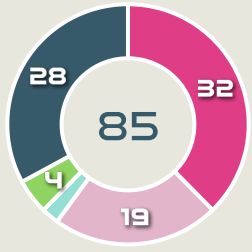
Movement to Receive

Movement Types by Phase

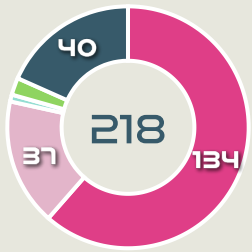
Final Third Phase



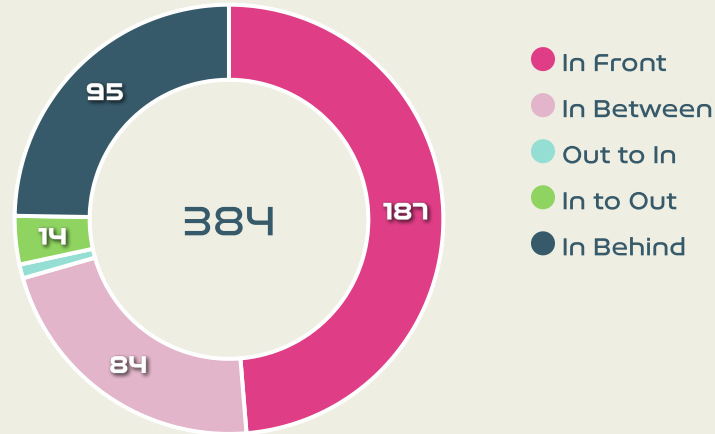
Progression Phase



Build Up Phase



All Movement Types

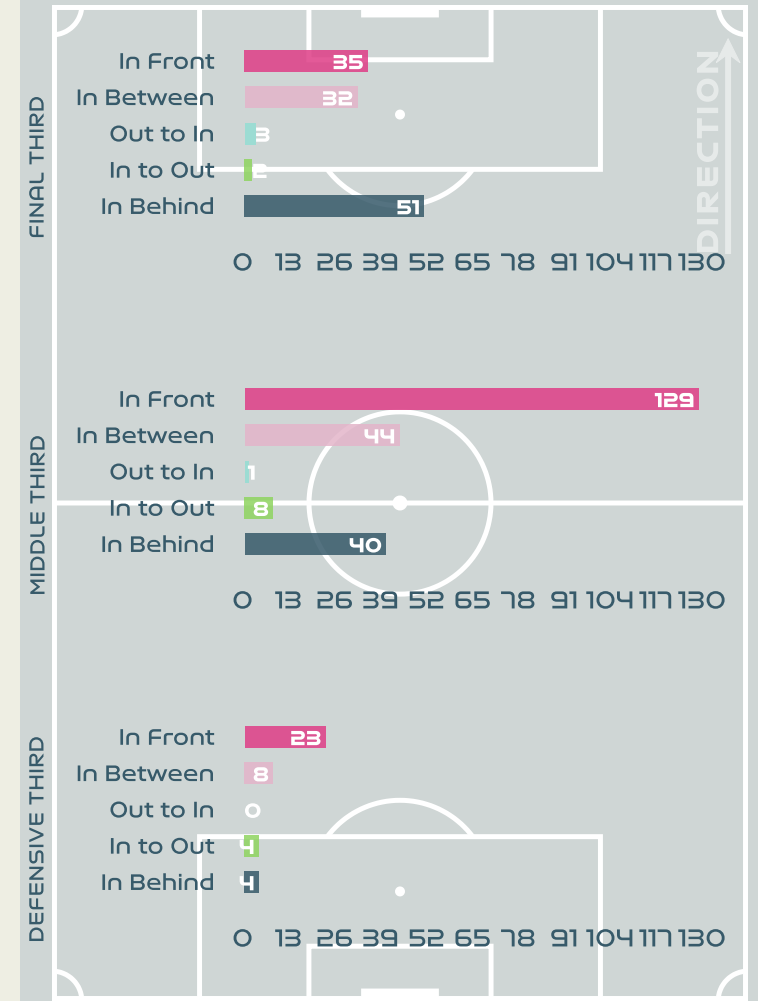


- In Front
- In Between
- Out to In
- In to Out
- In Behind

Top Ranked Players

Type	Player	Movements
In Front	13 WAELTI Lia	70
In Between	10 BACHMANN Ramona	26
Out to In	9 CRNOGORCEVIC Ana Maria	1
In to Out	10 BACHMANN Ramona	5
In Behind	17 PIUBEL Seraina	16

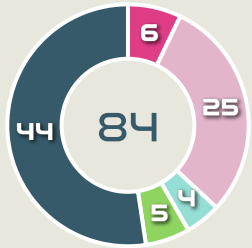
Movement Types Pitch Third



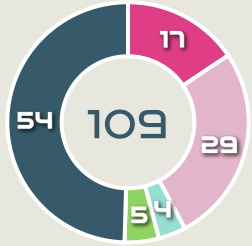
Movement to Receive

Movement Types by Phase

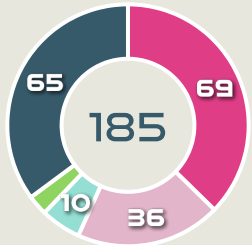
Final Third Phase



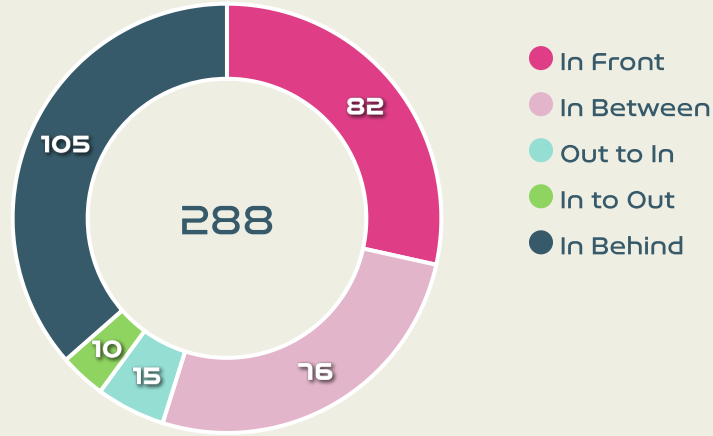
Progression Phase



Build Up Phase



All Movement Types

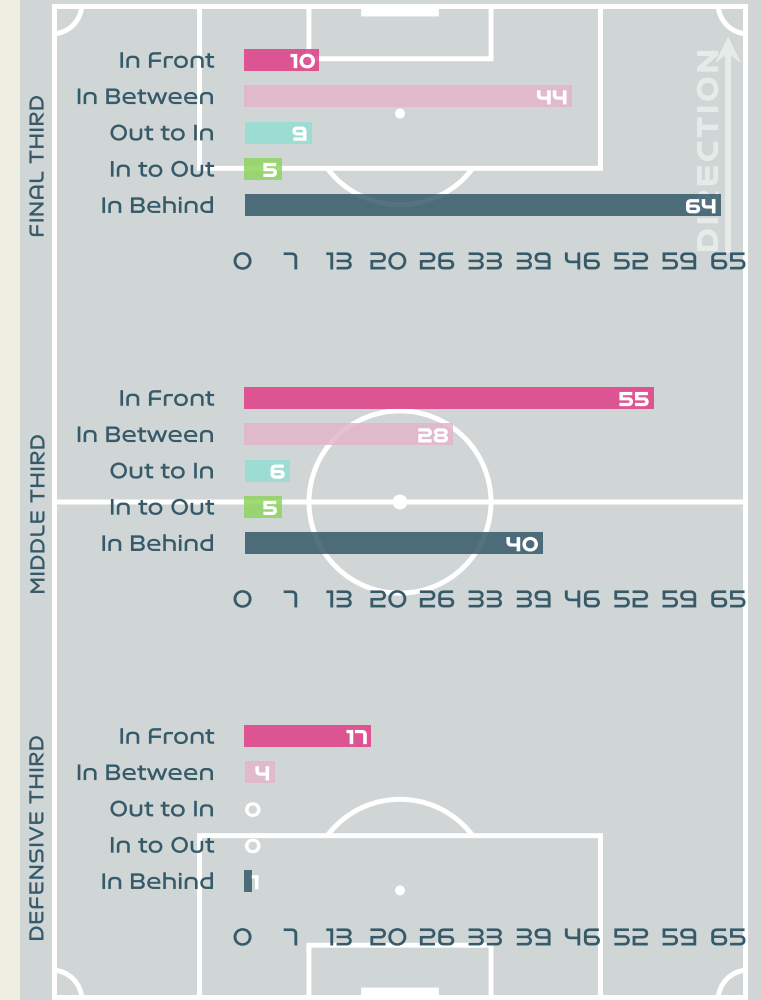


- In Front
- In Between
- Out to In
- In to Out
- In Behind

Top Ranked Players

Type	Player	Movements
In Front	8 BOE RISA Vilde	33
In Between	18 MAANUM Frida	37
Out to In	18 MAANUM Frida	6
In to Out	11 REITEN Guro	5
In Behind	15 EIKELAND Amalie	28

Movement Types Pitch Third





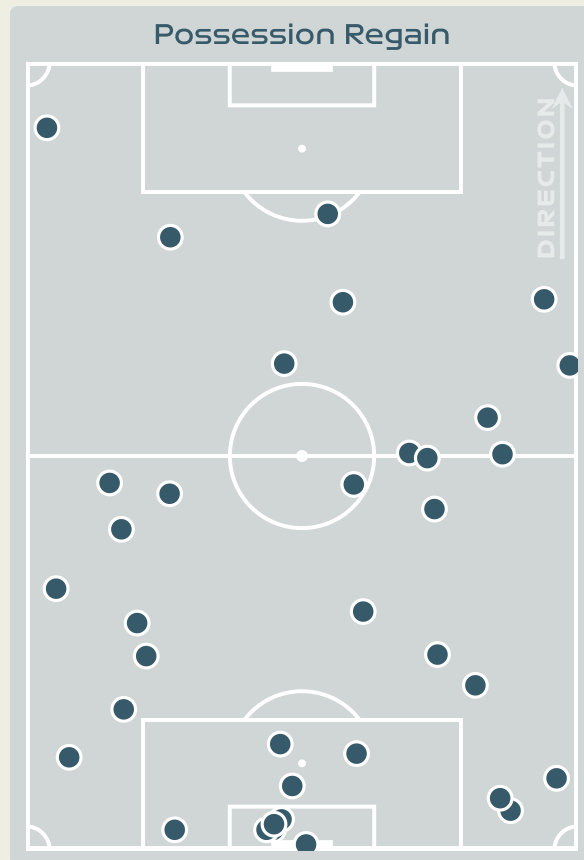
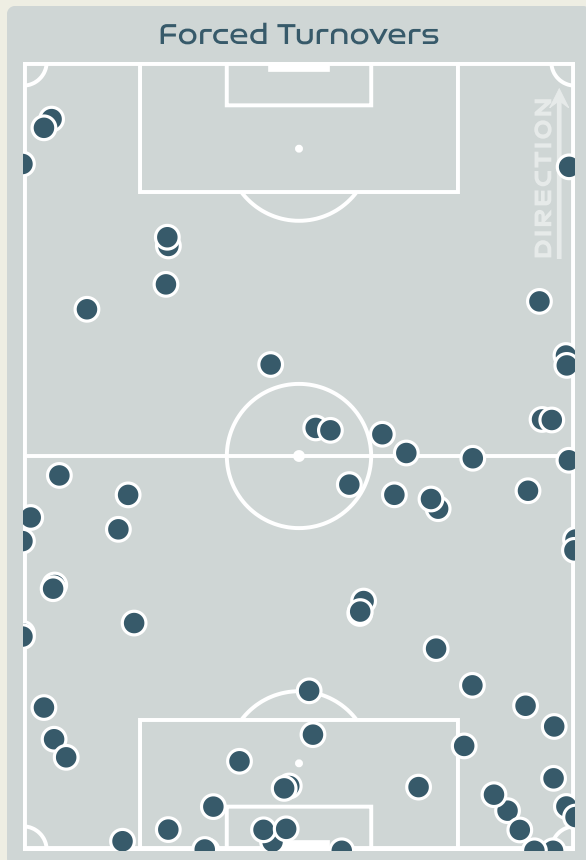
OUT OF POSSESSION



Switzerland v Norway



Defensive Actions



Blocks



Possession Contests



Most Possession Regains



#	Player	Total Possession Regains
1	THALMANN Gaelle	5
2	STIERLI Julia	3
5	MARITZ Noelle	4
6	REUTELER Geraldine	4
8	RIESEN Nadine	2
9	CRNOGORCEVIC Ana Maria	3
10	BACHMANN Ramona	3
11	SOW Coumba	1
13	WAEELT Lia	6
17	PIUBEL Seraina	3
19	AIGBOGUN Eseosa	5
14	REY Marion	0
16	MAURON Sandrine	1
22	TERCHOUN Meriame	0

Defensive Actions

76

Forced Turnovers

57

Possession Regained

9

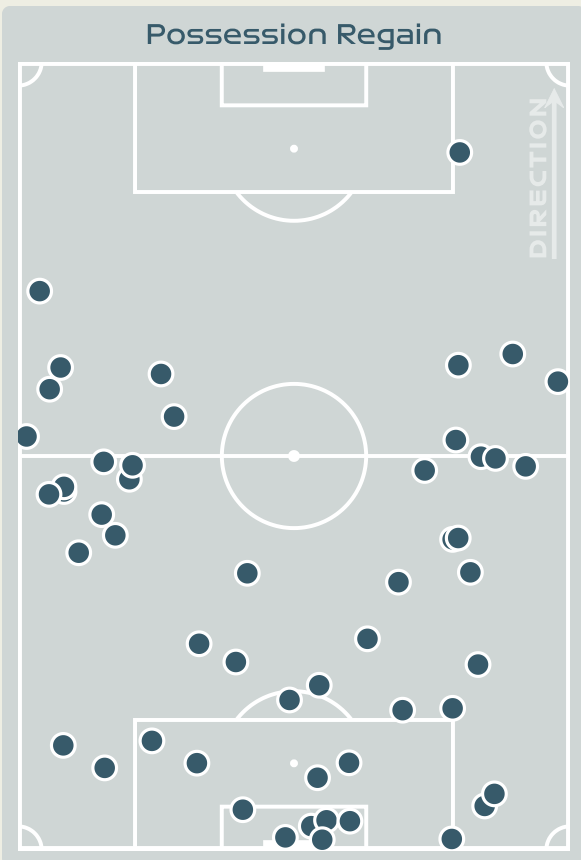
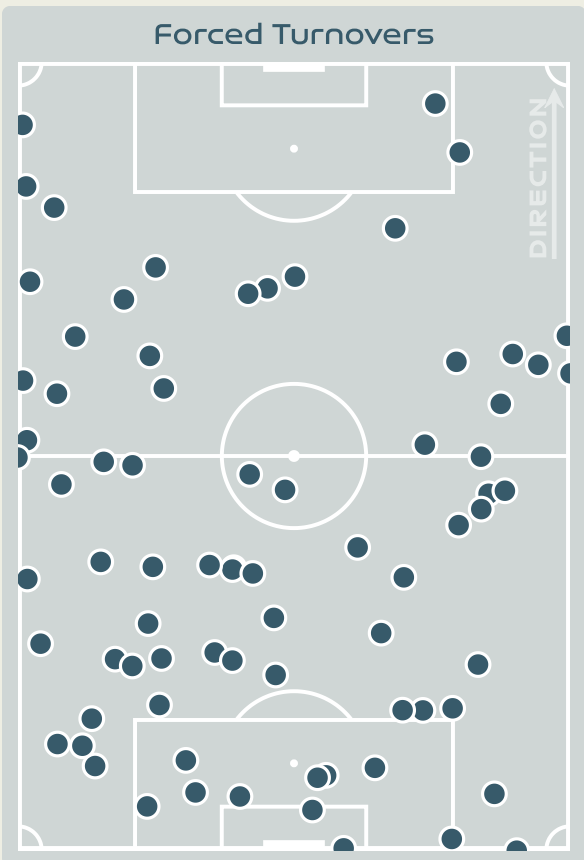
Interceptions

25

Tackles

4.7

Possession Actions / Defensive Action



Blocks



Possession Contests



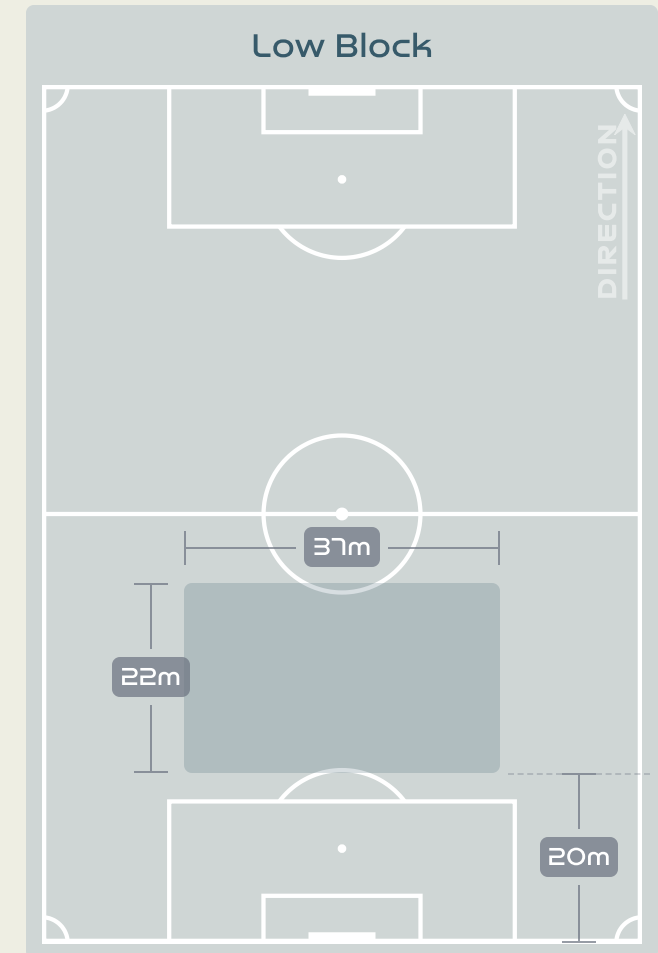
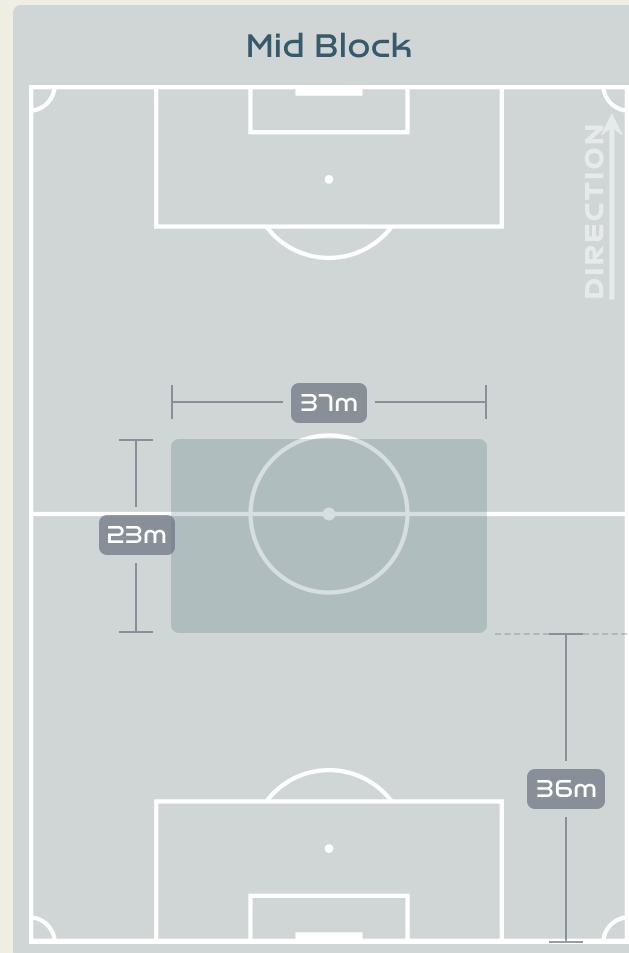
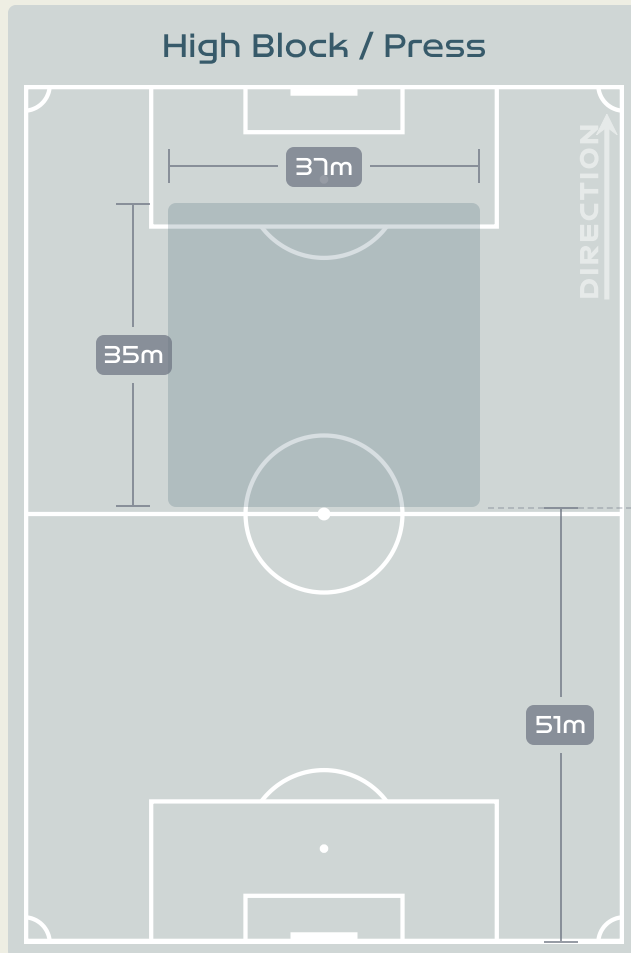
Most Possession Regains

10

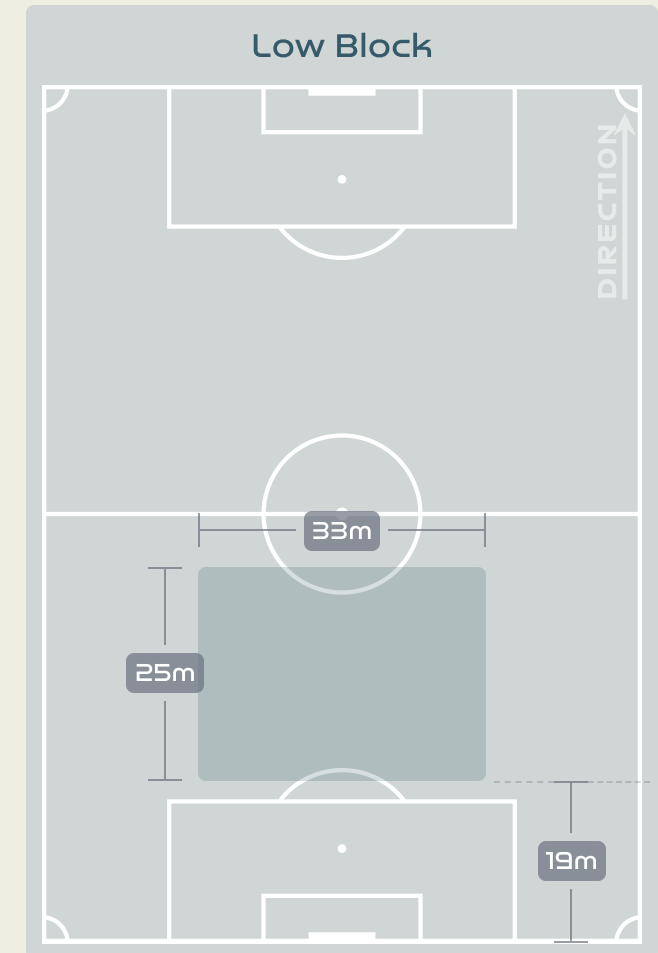
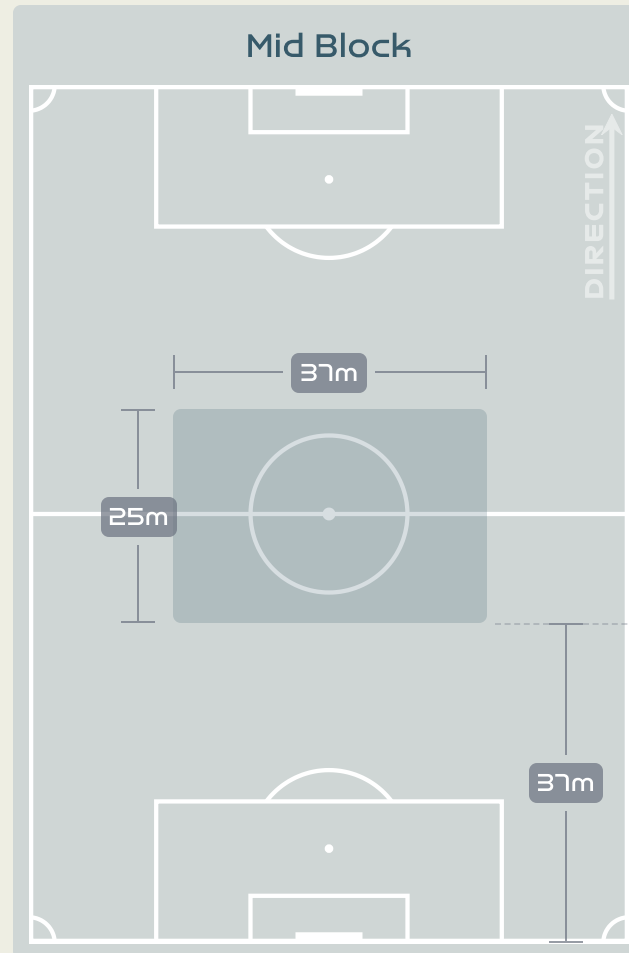
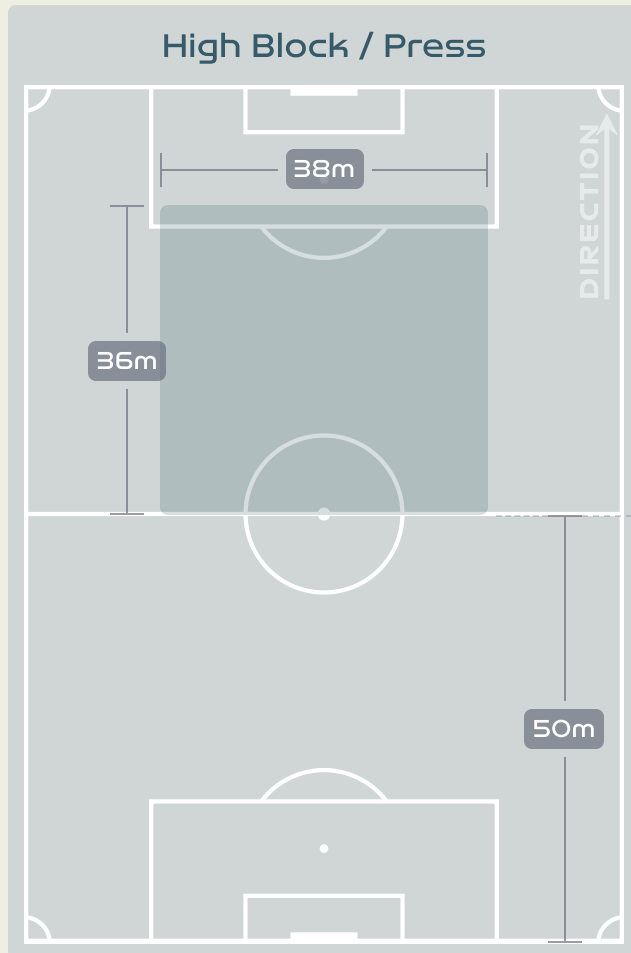
HARVIKEN Mathilde
LEFT CENTRE BACK

#	Player	Total Possession Regains
23	MIKALSEN Aurora	6
4	HANSEN Tuva	5
6	MJELDE Maren	8
8	BOE RISA Vilde	9
11	REITEN Guro	1
13	BJELDE Thea	7
15	EIKELAND Amalie	2
16	HARVIKEN Mathilde	10
18	MAANUM Frida	2
20	HAAVI Emilie	2
22	ROMAN HAUG Sophie	3
2	SONSTEVOLD Anja	1
7	SYRSTAD ENGEN Ingrid	0
9	SAEVIK Karina	0
10	GRAHAM HANSEN Caroline	0
19	BRATBERG LUND Marit	1

Defensive Line Height & Team Length



Defensive Line Height & Team Length



Defensive Pressure



185	Total Pressures	247
42	Direct Pressures	61
1.39s	Avg Pressure Duration	1.61s
71	Forced Turnovers	76
9.02s	Ball Recovery Time	11.4s
70	Pushing on into Pressing	116
163	Pushing on	256
23	Pressing Direction Inside	33
115	Pressing Direction Outside	131

Most Direct Pressures

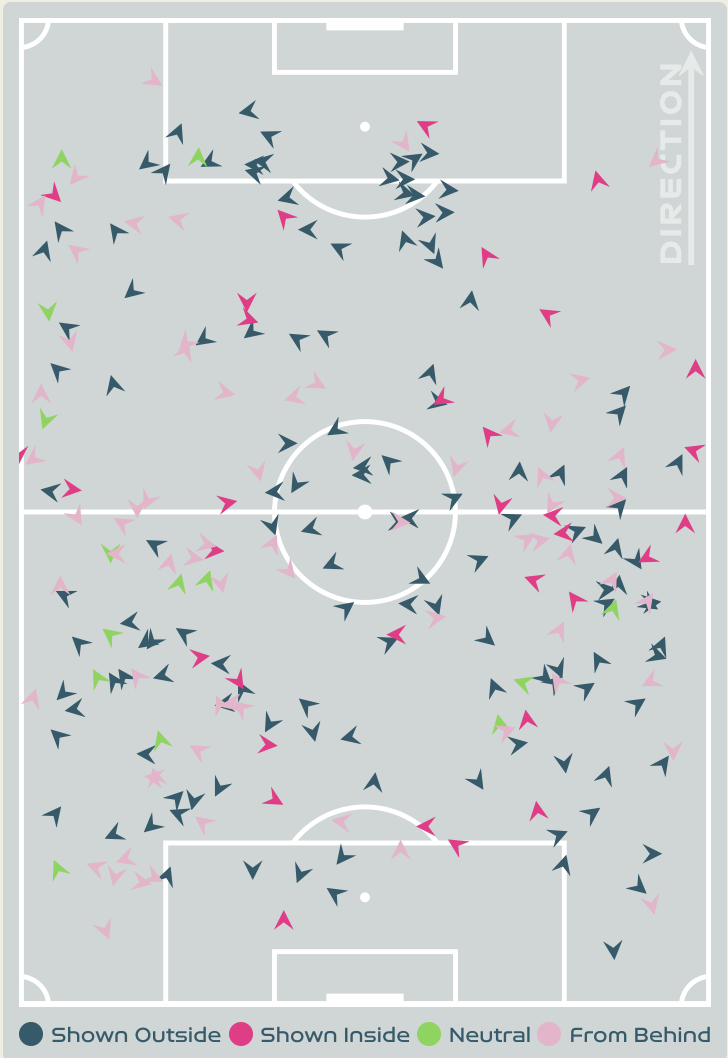
7

SOW Coumba
RIGHT CENTRE MIDFIELD

Most Direct Pressures

13

HARVIKEN Mathilde
LEFT CENTRE BACK





GOALKEEPING



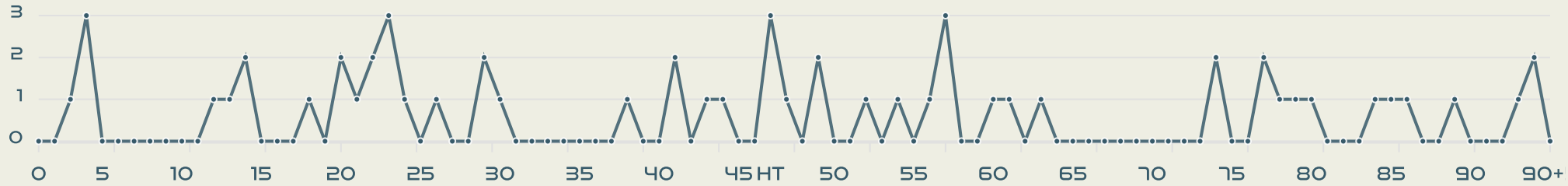
Switzerland v Norway



Goalkeeping Involvement

Switzerland

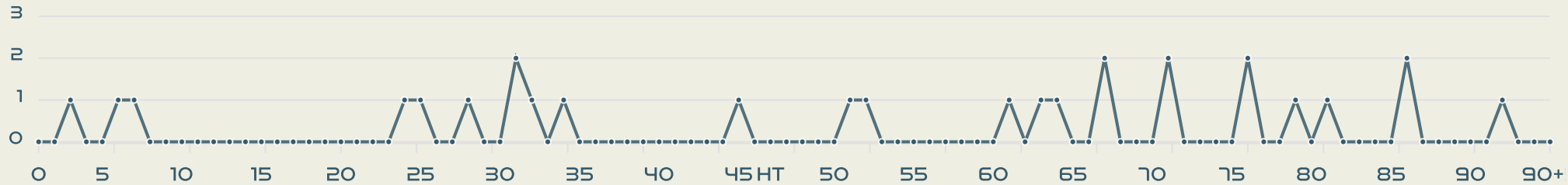
Switzerland GK Involvement Timeline



58
Total Involvements

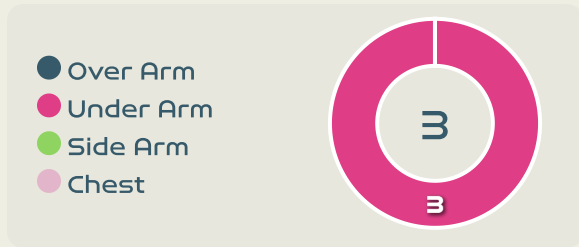
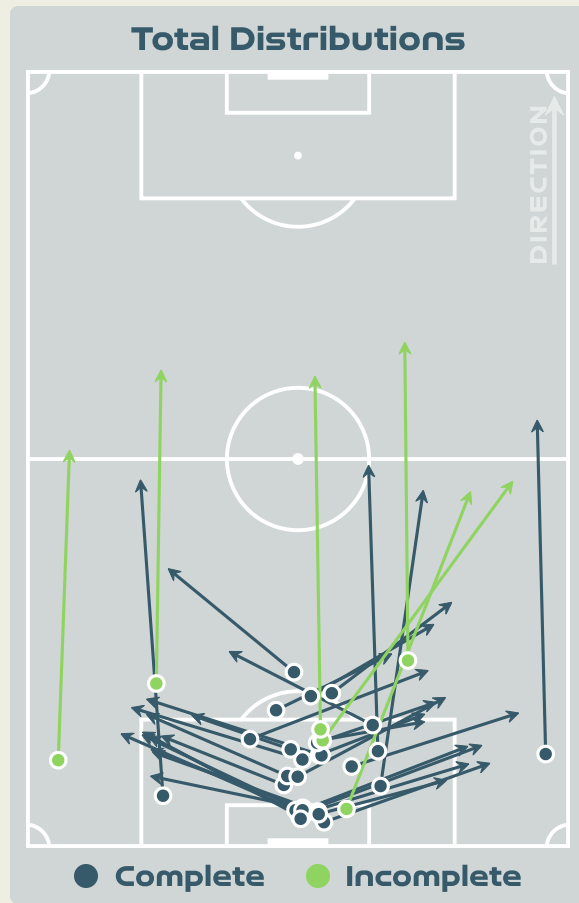
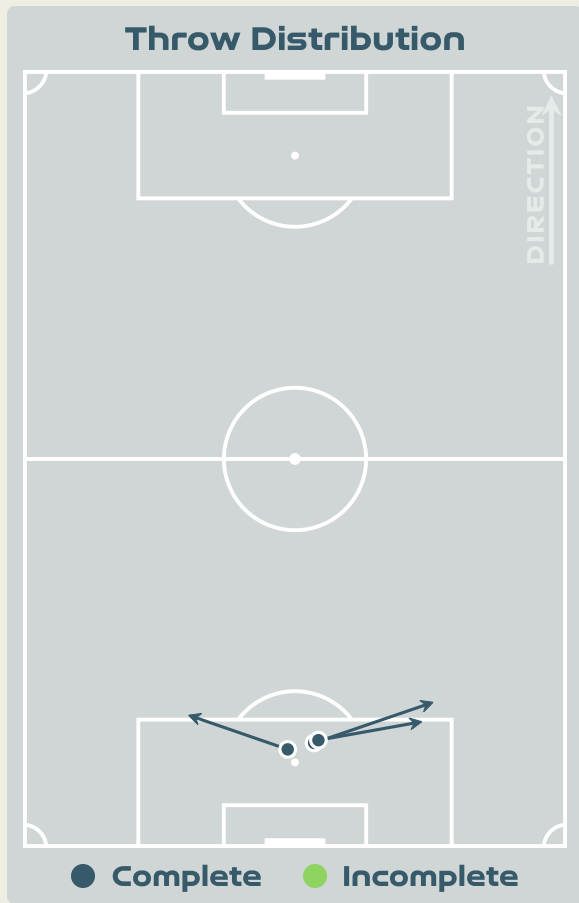
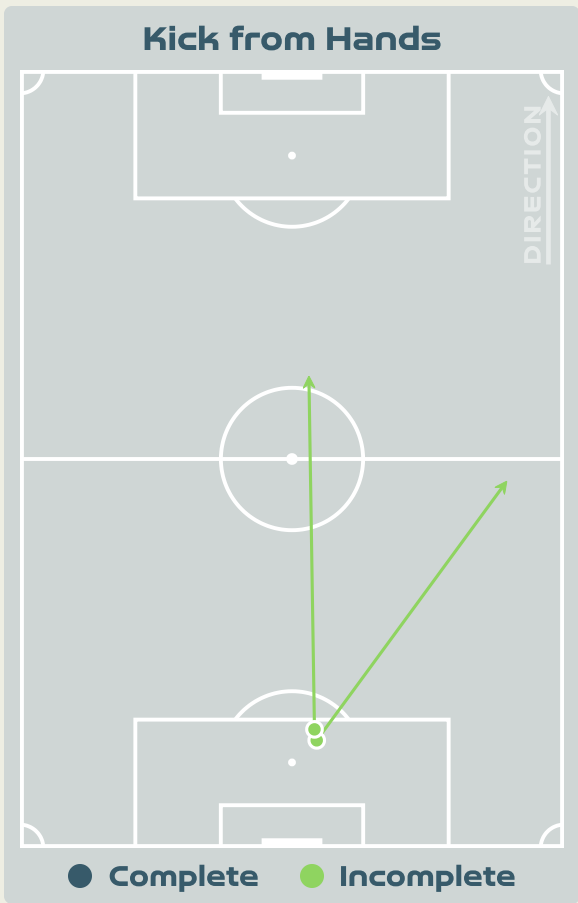
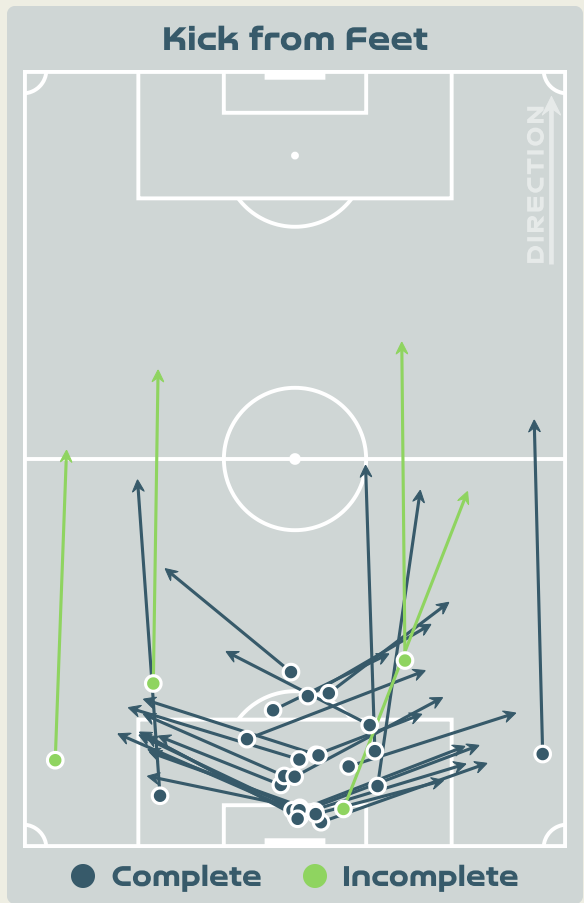
Norway

Norway GK Involvement Timeline

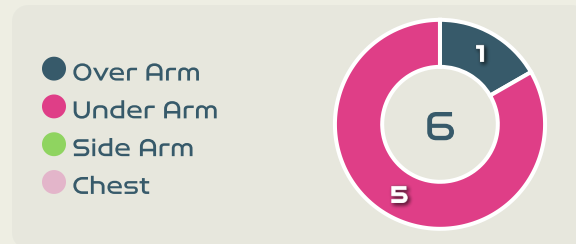
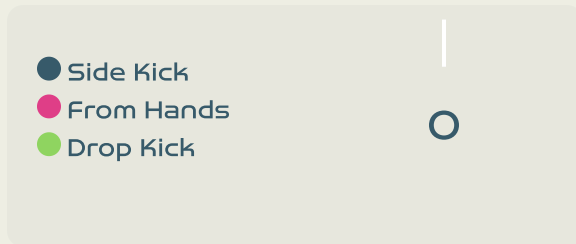
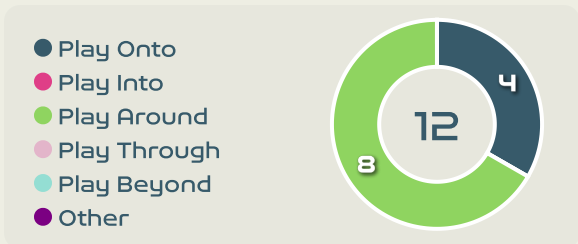
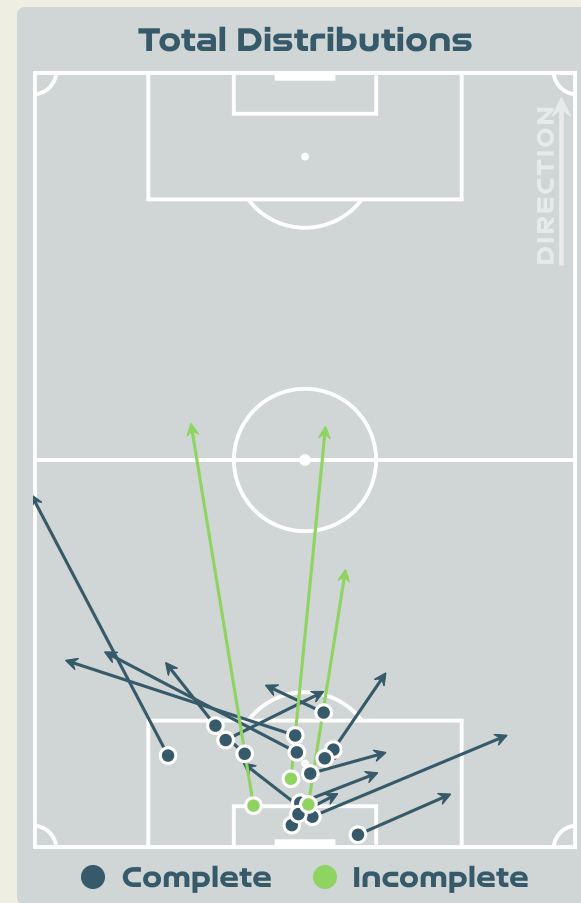
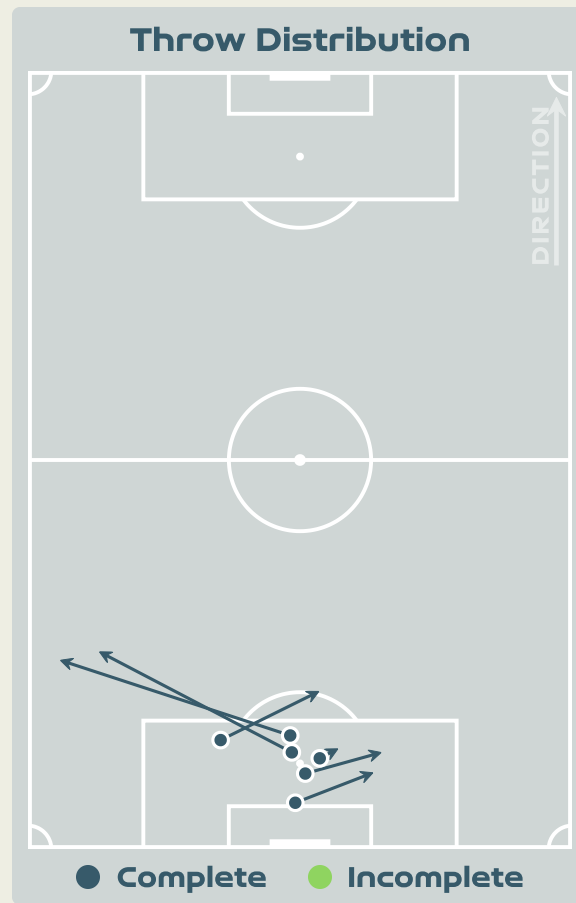
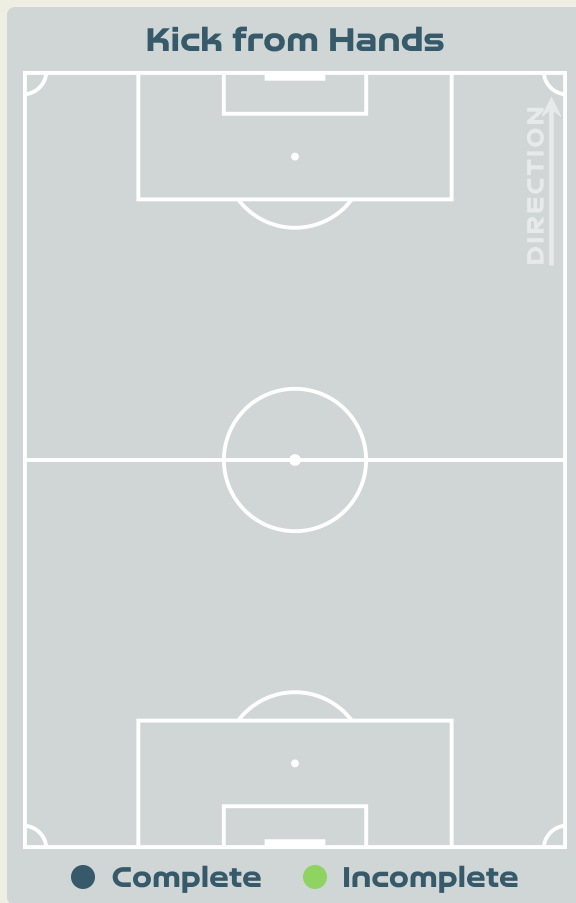
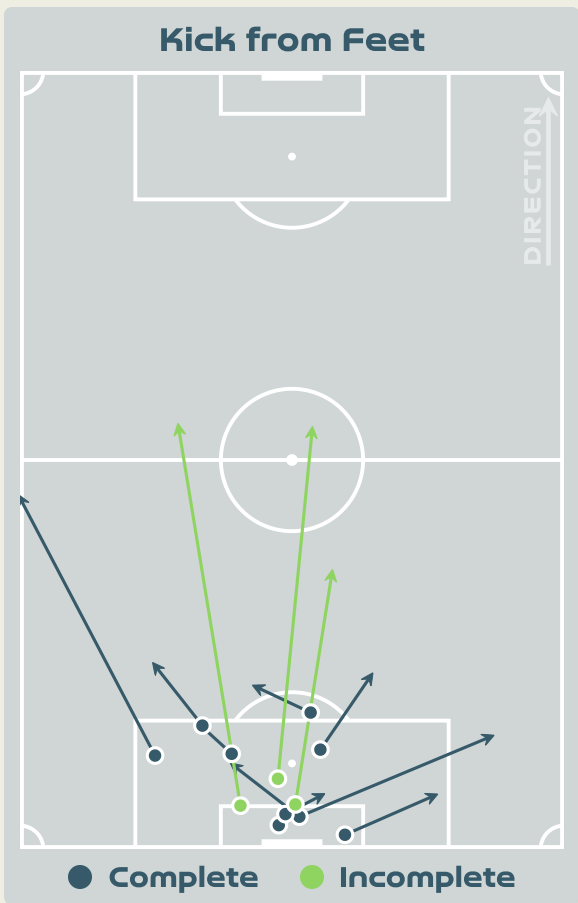


28
Total Involvements

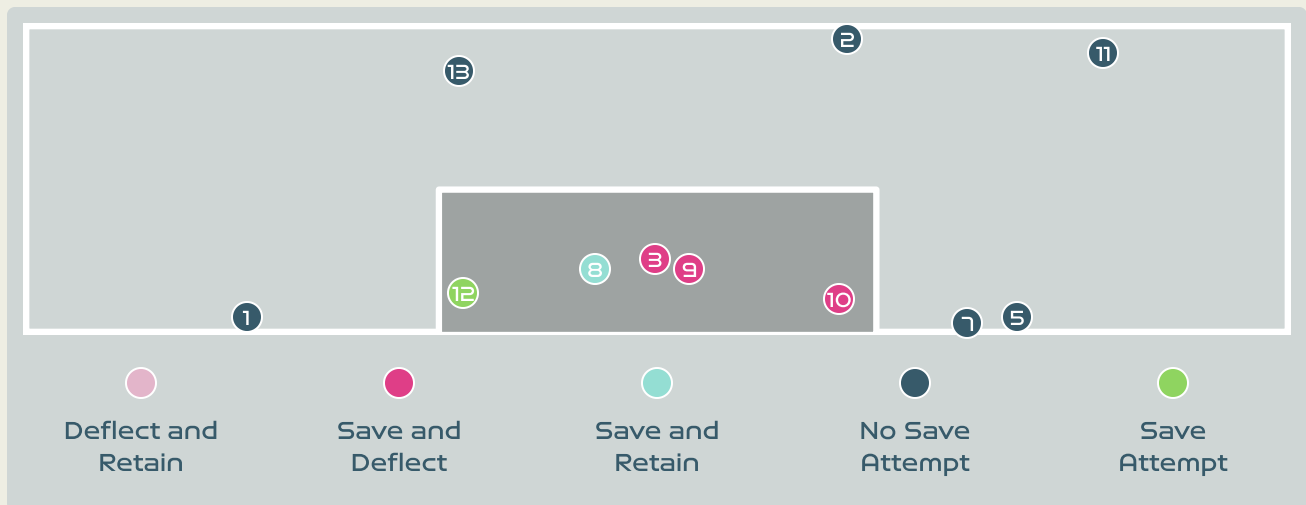
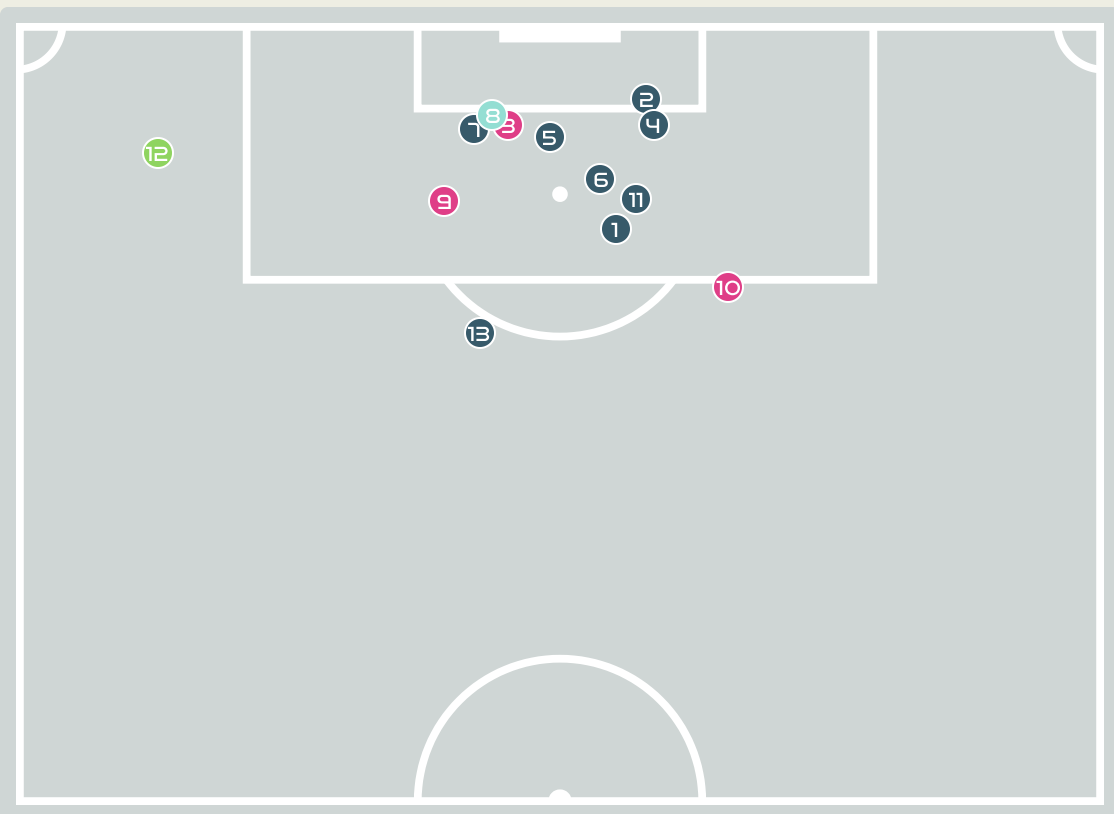
Goalkeeping Distribution



Goalkeeping Distribution

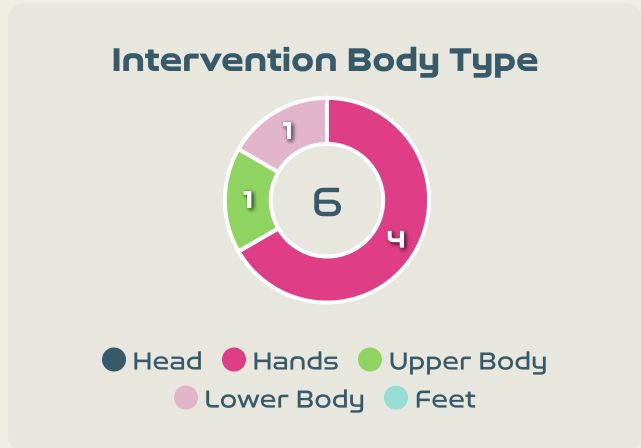
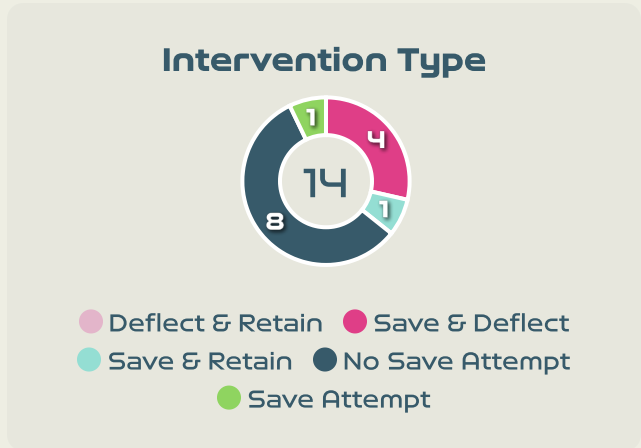


Goal Prevention



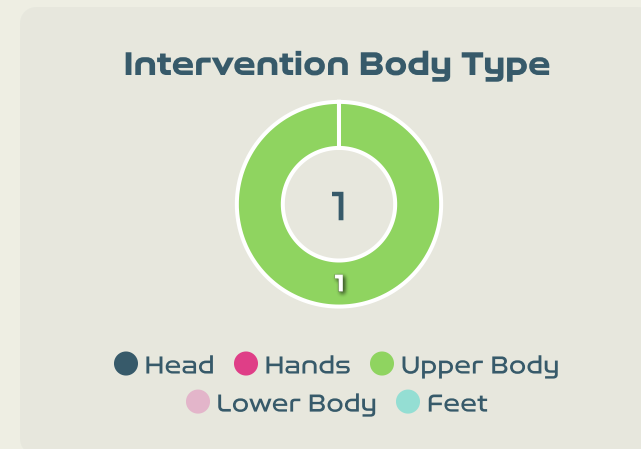
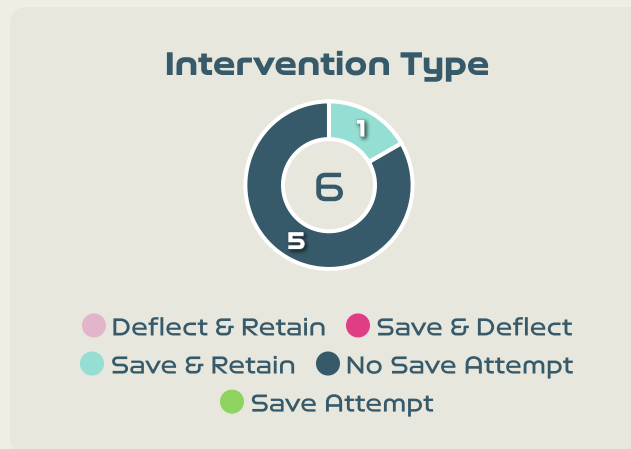
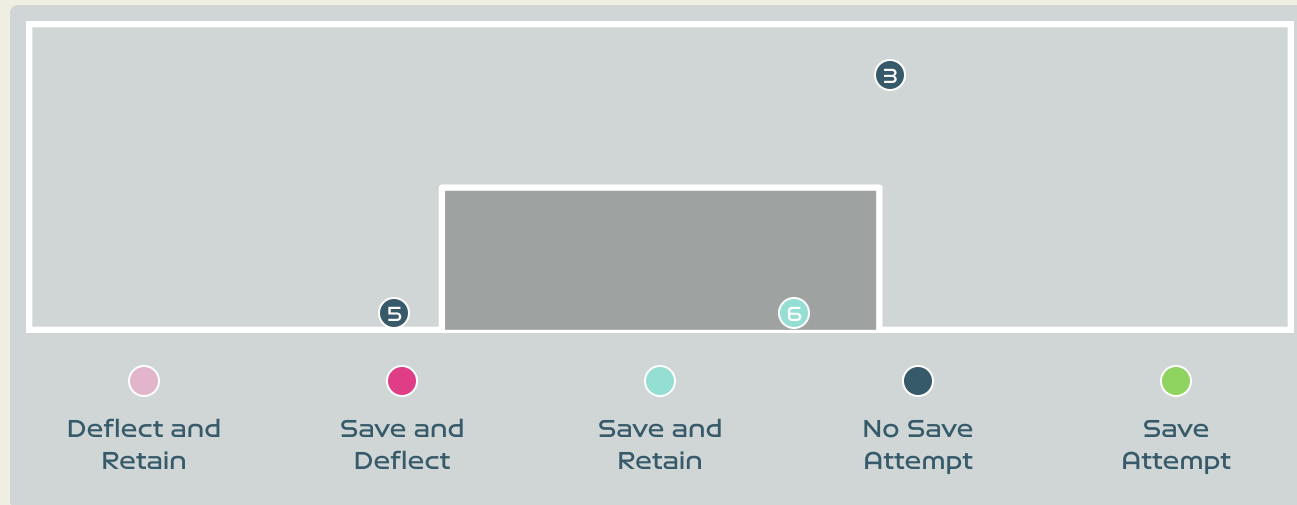
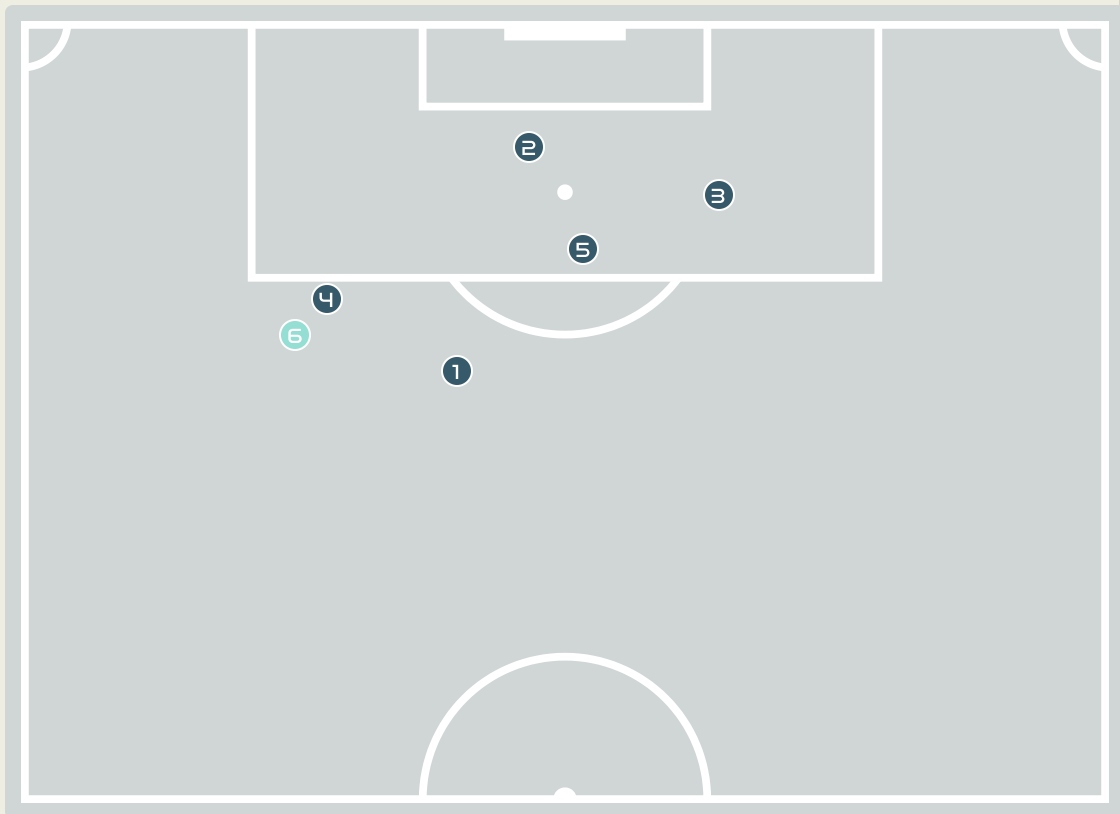
14
Total Attempts on Goal Faced

100
Save %



Total Attempts on Goal Faced	Total Goal Interventions	Save & Retain	Deflect & Retain	Save & Deflect	Save Attempt	No Save Attempt
14	5	1	0	4	1	8

Goal Prevention

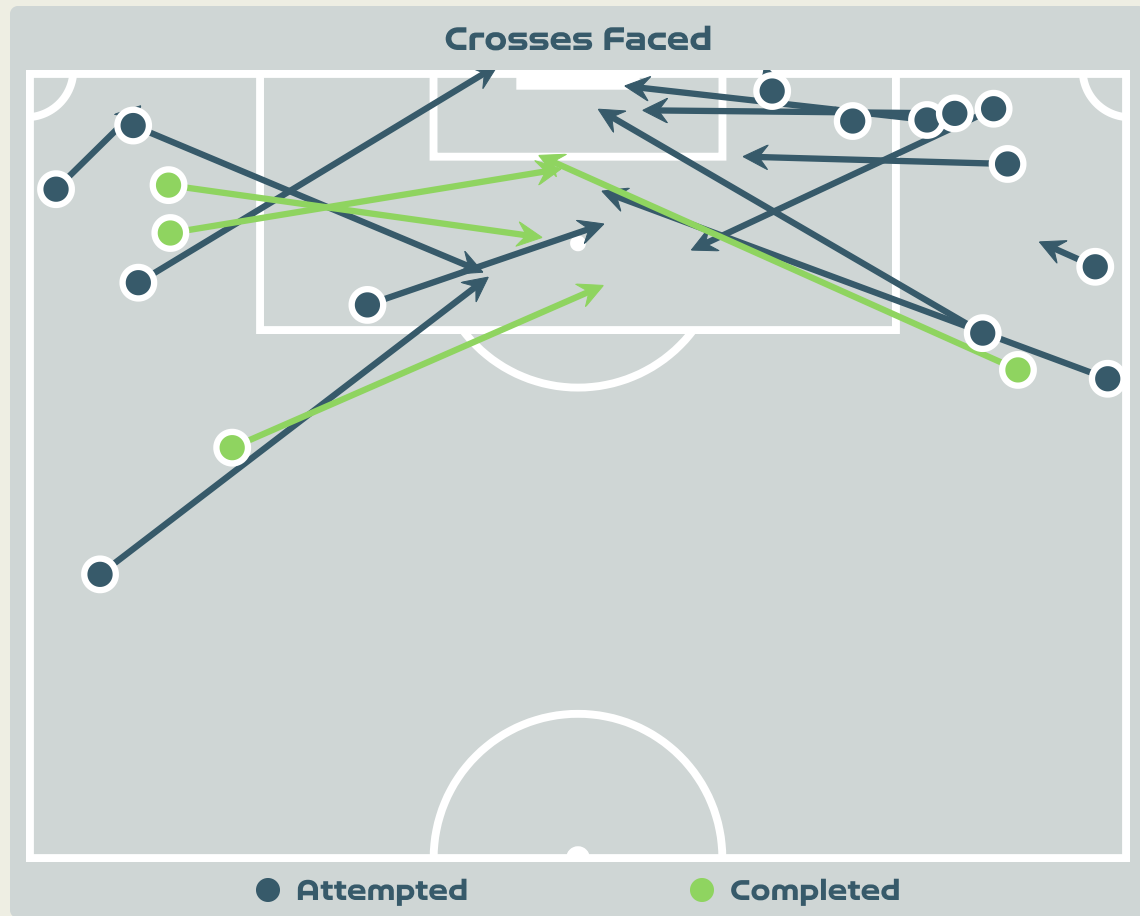
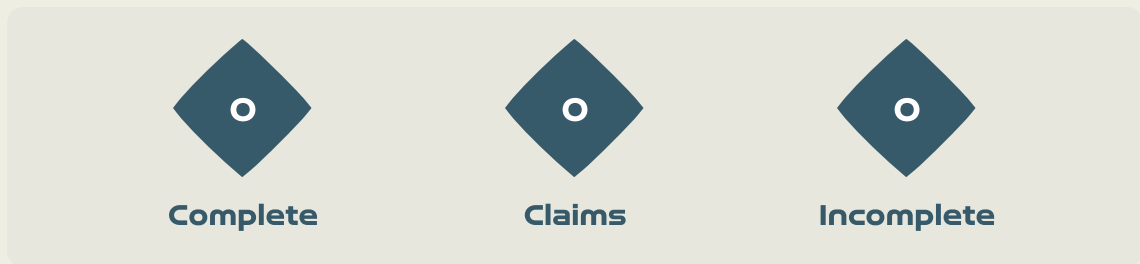


6
Total Attempts on Goal Faced

100
Save %

Total Attempts on Goal Faced	Total Goal Interventions	Save & Retain	Deflect & Retain	Save & Deflect	Save Attempt	No Save Attempt
6	1	1	0	0	0	5

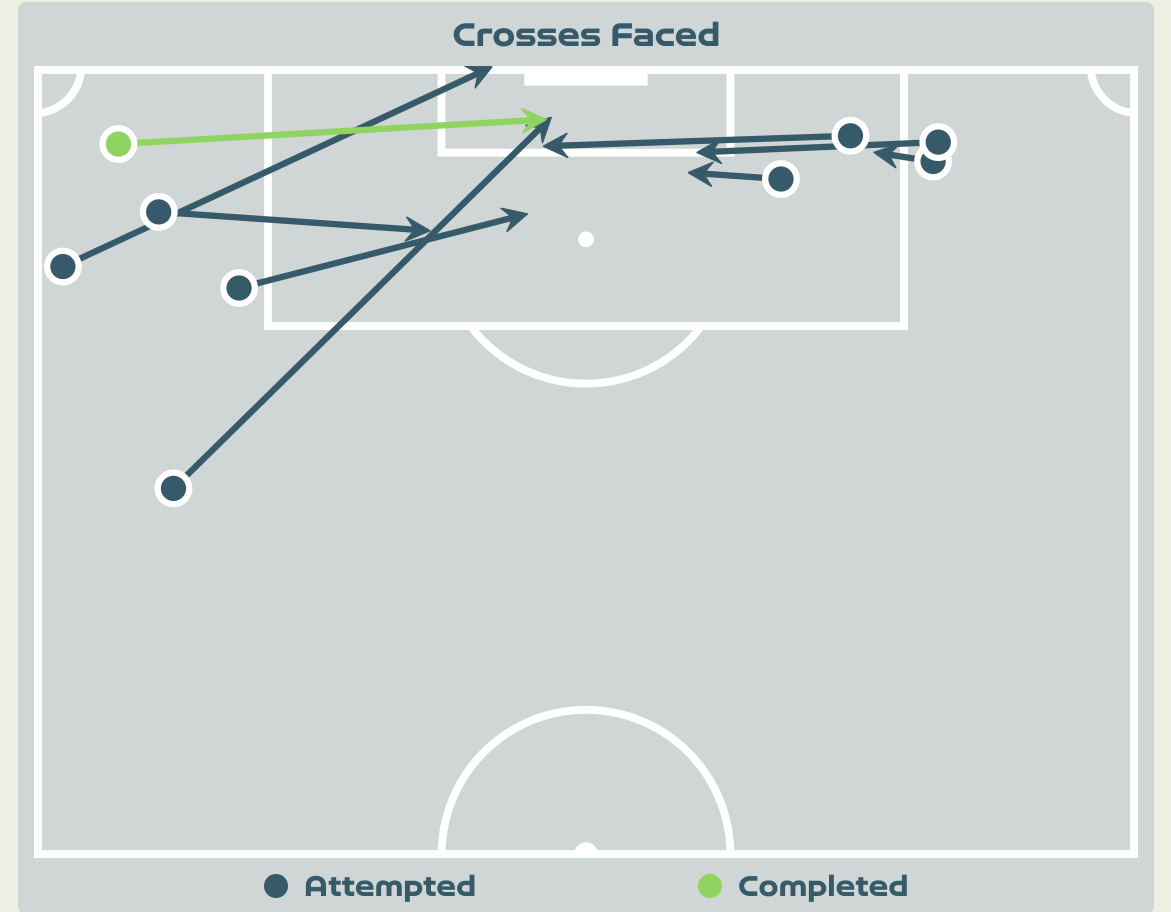
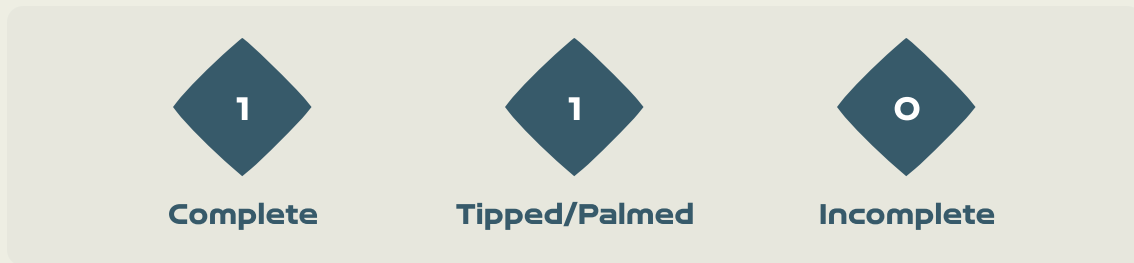
Aerial Control



Delivery Types Faced

Total	In Swing	Out Swing	Driven	Lofted	Cutback	Push
25	8	5	0	6	0	6

Aerial Control



Delivery Types Faced

Total	In Swing	Out Swing	Driven	Lofted	Cutback	Push
11	2	1	2	5	0	1



SET PLAYS



Switzerland v Norway



Set Plays - Corners

39

Total Set Plays

12

Total Free Kicks

0

Total Penalties

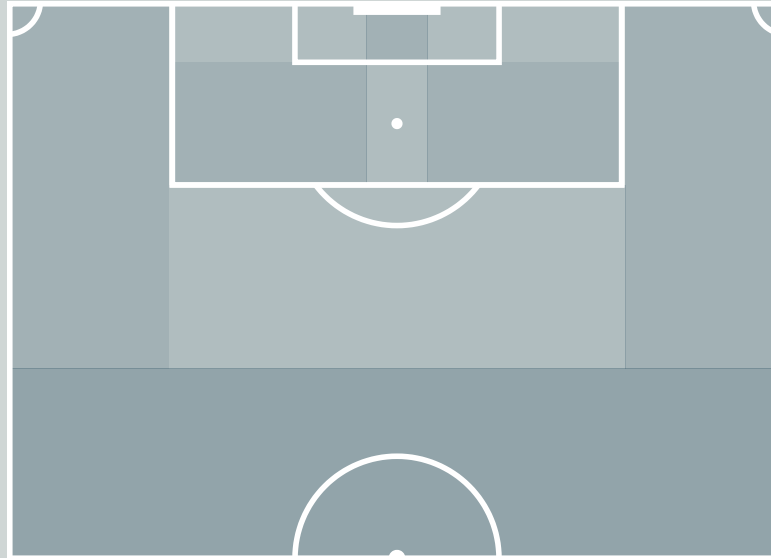
2

Total Corners

25

Total Throw Ins

Corners - First Contact



● Switzerland

● Norway

Delivery Type	From Left Side	From Right Side	Total
Direct to Area	0	2	2
Short	0	0	0
Edge of Penalty Area	0	0	0

Delivery Style	Total
Inswing	2
Outswing	0
Driven	0

Free Kicks

Type	Total
Direct	8
Direct (on target)	0
Direct (off target)	0
Indirect	4

First Contacts on Switzerland Crosses

0

By Switzerland

0

By Norway

Top 5 Player First Contacts

Player	Team	Total
--------	------	-------

Set Plays - Corners

42

Total Set Plays

13

Total Free Kicks

0

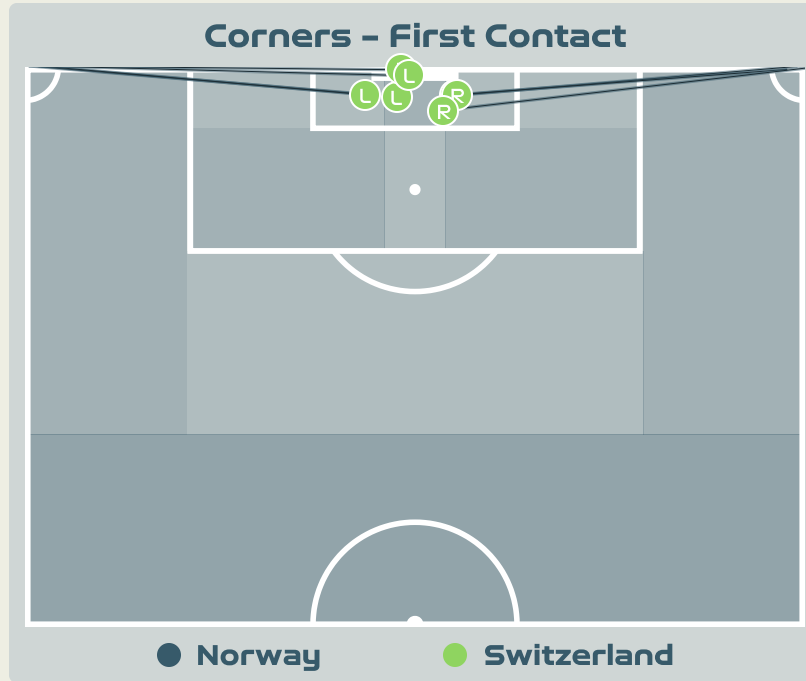
Total Penalties

7

Total Corners

22

Total Throw Ins



Delivery Type	From Left Side	From Right Side	Total
Direct to Area	4	3	7
Short	0	0	0
Edge of Penalty Area	0	0	0

Delivery Style	Total
Inswing	7
Outswing	0
Driven	0

Free Kicks	
Type	Total
Direct	10
Direct (on target)	1
Direct (off target)	1
Indirect	3

First Contacts on Norway Crosses

0

By Norway

7

By Switzerland

Top 5 Player First Contacts		
Player	Team	Total
CRNOGORCEVIC Ana Maria	Switzerland	3
THALMANN Gaelle	Switzerland	2
STIERLI Julia	Switzerland	1
WAEELTI Lia	Switzerland	1



INDIVIDUAL DATA IN POSSESSION



Switzerland v Norway



In Possession - Distributions



#	Player	Passes Attempted	Passes Completed	Pass Completion %	Switches of Play	Crosses Attempted	Crosses Completed	Line Breaks Attempted	Line Breaks Completed	Line Break Completion %	Ball Progressions	Take Ons	Step Ins	Attempts at Goal	Goals
1	THALMANN Gaelle	38	32	84%	0	0	0	6	3	50%	0	0	0	0	0
2	STIERLI Julia	54	43	80%	0	2	0	18	7	38%	0	0	0	0	0
5	MARITZ Noelle	59	50	85%	1	0	0	15	9	60%	7	0	7	0	0
6	REUTELER Geraldine	42	37	88%	0	1	0	8	8	100%	1	1	0	1	0
8	RIESEN Nadine	36	31	86%	0	2	0	12	7	58%	1	0	1	1	0
9	CRNOGORCEVIC Ana Maria	24	13	54%	0	2	1	6	2	33%	3	1	2	1	0
10	BACHMANN Ramona	48	43	90%	0	2	0	11	10	90%	4	0	4	2	0
11	SOW Coumba	43	35	81%	0	2	0	7	5	71%	1	1	0	1	0
13	WAELTI Lia	64	56	88%	2	0	0	17	15	88%	1	0	1	0	0
17	PIUBEL Seraina	27	19	70%	0	0	0	3	2	66%	3	3	0	0	0
19	AIGBOGUN Eseosa	58	44	76%	0	0	0	16	7	43%	0	0	0	0	0
14	REY Marion	0	0	0%	0	0	0	0	0	0%	0	0	0	0	0
16	MAURON Sandrine	6	5	83%	0	0	0	1	1	100%	0	0	0	0	0
22	TERCHOUN Merieme	3	3	100%	0	0	0	1	1	100%	0	0	0	0	0

In Possession - Offers & Receptions



			Offer movement types						
#	Player	Total Offers	In Front	In Between	Out to In	In to Out	In Behind	No Movement	Offers Received
1	THALMANN Gaelle	24	0	0	0	0	1	23	4
2	STIERLI Julia	17	0	0	0	0	0	17	9
5	MARITZ Noelle	24	2	0	0	0	0	22	12
6	REUTELER Geraldine	73	38	17	0	2	9	7	28
8	RIESEN Nadine	33	11	0	0	0	12	10	11
9	CRNOGORCEVIC Ana Maria	33	2	13	1	2	14	1	11
10	BACHMANN Ramona	91	32	26	1	5	15	12	24
11	SOW Coumba	39	16	10	1	3	9	0	19
13	Waelti Lia	82	70	6	0	0	0	6	29
17	PIUBEL Seraina	28	2	5	1	1	16	3	4
19	AIGBOGUN Eseosa	35	14	2	0	0	11	8	11
14	REY Marion	0	0	0	0	0	0	0	0
16	MAURON Sandrine	9	0	4	0	1	4	0	4
22	TERCHOUN Meriame	6	0	1	0	0	4	1	1

In Possession - Distributions



#	Player	Passes Attempted	Passes Completed	Pass Completion %	Switches of Play	Crosses Attempted	Crosses Completed	Line Breaks Attempted	Line Breaks Completed	Line Break Completion %	Ball Progressions	Take Ons	Step Ins	Attempts at Goal	Goals
23	MIKALSEN Aurora	18	15	83%	0	0	0	4	1	25%	0	0	0	0	0
4	HANSEN Tuva	32	29	91%	0	1	0	9	7	77%	0	0	0	0	0
6	MJELDE Maren	89	84	94%	0	0	0	8	7	87%	5	0	5	2	0
8	BOE RISA Vilde	81	72	89%	0	2	1	27	24	88%	0	0	0	1	0
11	REITEN Guro	34	21	62%	0	4	1	12	6	50%	3	2	1	0	0
13	BJELDE Thea	42	32	76%	0	0	0	9	6	66%	2	1	1	0	0
15	EIKELAND Amalie	12	11	92%	0	1	0	5	4	80%	4	1	3	1	0
16	HARVIKEN Mathilde	82	79	96%	0	0	0	12	9	75%	2	0	2	0	0
18	MAANUM Frida	30	22	73%	1	7	1	7	5	71%	1	0	1	1	0
20	HAAVI Emilie	24	10	42%	1	6	2	10	5	50%	3	1	2	0	0
22	ROMAN HAUG Sophie	9	7	78%	0	0	0	1	1	100%	0	0	0	5	0
2	SONSTEVOLD Anja	9	6	67%	0	0	0	1	1	100%	0	0	0	0	0
7	SYRSTAD ENGEN Ingrid	2	2	100%	0	0	0	0	0	0%	0	0	0	0	0
9	SAEVIK Karina	0	0	0%	0	0	0	0	0	0%	0	0	0	0	0
10	GRAHAM HANSEN Caroline	14	13	93%	0	4	0	5	3	60%	0	0	0	3	0
19	BRATBERG LUND Marit	4	2	50%	0	0	0	1	0	0%	0	0	0	0	0



INDIVIDUAL DATA OUT OF POSSESSION



Switzerland v Norway



Out of Possession



#	Player	Tackles Made / Won	Blocks	Interceptions	Pressing Direct	Pressing Indirect	Duels Won - Aerial	Duels Won - Physical	Possession Contests won	Clearances	Loose Ball Receptions	Pushing On	Pushing On into Pressing	Possession Regains	Possession Interrupted
1	THALMANN Gaelle	0 / 0	0	0	0	0	0	0	0	0	4	0	0	5	0
2	STIERLI Julia	1 / 0	2	0	1	2	1	0	1	8	2	8	0	3	9
5	MARITZ Noelle	0 / 0	1	2	0	1	0	0	0	5	0	3	0	4	3
6	REUTELER Geraldine	6 / 0	3	2	3	12	0	0	0	0	12	15	4	4	3
8	RIESEN Nadine	1 / 0	4	1	6	9	1	0	1	5	3	6	3	2	6
9	CRNOGORCEVIC Ana Maria	2 / 0	4	0	4	44	6	0	7	4	3	21	15	3	7
10	BACHMANN Ramona	2 / 1	1	1	5	17	0	0	0	0	6	23	11	3	2
11	SOW Coumba	5 / 1	2	0	7	10	4	0	7	2	13	13	3	1	3
13	WAELTI Lia	6 / 1	0	1	6	7	2	0	3	8	16	18	8	6	9
17	PIUBEL Seraina	0 / 0	3	1	3	31	0	0	0	0	8	31	18	3	1
19	AIGBOGUN Eseosa	4 / 1	3	1	6	7	0	1	1	4	7	19	6	5	2
14	REY Marion	0 / 0	1	0	0	1	0	0	0	0	0	0	0	0	0
16	MAURON Sandrine	0 / 0	1	0	1	0	0	0	0	0	1	5	1	1	0
22	TERCHOUN Merieme	0 / 0	0	0	0	2	1	0	1	0	0	1	1	0	0

Out of Possession



#	Player	Tackles Made / Won	Blocks	Interceptions	Pressing Direct	Pressing Indirect	Duels Won - Aerial	Duels Won - Physical	Possession Contests won	Clearances	Loose Ball Receptions	Pushing On	Pushing On into Pressing	Possession Regains	Possession Interrupted
23	MIKALSEN Aurora	0 / 0	0	0	0	0	0	0	0	0	2	0	0	6	0
4	HANSEN Tuva	0 / 0	0	3	3	8	2	0	2	4	3	28	3	5	1
6	MJELDE Maren	4 / 1	5	3	3	2	1	2	3	6	7	2	0	8	9
8	BOE RISA Vilde	4 / 2	1	0	10	19	3	0	6	9	11	20	7	9	6
11	REITEN Guro	3 / 0	1	0	6	20	1	0	1	1	3	21	11	1	1
13	BJELDE Thea	3 / 2	5	1	4	3	1	0	1	4	6	15	4	7	5
15	EIKELAND Amalie	1 / 0	1	1	2	22	0	0	0	0	5	21	16	2	1
16	HARVIKEN Mathilde	3 / 1	4	0	13	5	1	0	1	7	11	18	4	10	8
18	MAANUM Frida	1 / 1	1	0	4	23	1	0	1	2	12	32	12	2	3
20	HAAVI Emilie	2 / 0	6	0	3	24	1	0	2	3	6	25	19	2	7
22	ROMAN HAUG Sophie	1 / 1	4	0	7	40	2	0	2	0	2	56	29	3	0
2	SONSTEVOLD Anja	2 / 0	0	0	2	3	0	0	0	0	3	6	1	1	2
7	SYRSTAD ENGEN Ingrid	0 / 0	0	0	1	3	1	0	1	0	0	2	1	0	0
9	SAEVIK Karina	0 / 0	0	0	2	4	0	0	0	0	0	5	4	0	0
10	GRAHAM HANSEN Caroline	1 / 0	0	0	1	8	0	0	0	0	2	3	3	0	1
19	BRATBERG LUND Marit	0 / 0	0	1	0	2	0	0	0	0	1	2	2	1	0



INDIVIDUAL DATA PHYSICAL



Switzerland v Norway



Physical Data



#	Player	Total Distance (m)	Zone 1: 0-7 km/h (m)	Zone 2: 7-13km/h (m)	Zone 3: 13-19km/h (m)	Zone 4: 19-23km/h (m)	Zone 5: 23+ km/h (m)	High Speed Runs (Zone 4)	Sprints (Zone 5)	Top Speed (km/h)
1	THALMANN Gaelle	5028.1	3285.9	1453.1	264.5	24.1	0	34.0	2.0	24.5
2	STIERLI Julia	9568.7	3357.7	4314.5	1709.0	156.9	30.6	144.0	14.0	25.5
5	MARITZ Noelle	9422.0	3284.5	3868.7	2015.4	178.1	75.4	170.0	18.0	28.2
6	REUTELER Geraldine	9075.4	2637.3	3909.7	1950.3	442.0	137.0	161.0	35.0	30.3
8	RIESEN Nadine	10754.3	3477.9	4216.8	2311.1	433.4	316.2	187.0	39.0	28.8
9	CRNOGORCEVIC Ana Maria	11152.6	3718.3	4088.5	2836.1	421.6	88.1	206.0	35.0	27.7
10	BACHMANN Ramona	9454.5	3755.3	3251.4	1858.7	405.6	183.4	160.0	32.0	27.8
11	SOW Coumba	11759.7	3427.9	4578.0	3333.9	383.4	36.5	226.0	29.0	25.8
13	WAELTI Lia	11327.1	3016.4	4603.3	3289.4	355.7	62.3	234.0	27.0	27.2
17	PIUBEL Seraina	9954.1	3549.6	3445.1	2253.6	508.7	197.1	181.0	39.0	27.1
19	AIGBOGUN Eseosa	11255.6	3302.4	4518.0	2669.8	529.0	236.4	211.0	47.0	29.5
14	REY Marion	303.8	28.0	112.3	107.8	42.2	13.5	9.0	4.0	26.6
16	MAURON Sandrine	1998.7	482.1	810.5	527.1	110.1	69.0	37.0	11.0	26.8
22	TERCHOUN Merieme	1004.0	215.2	353.3	307.7	66.1	61.7	21.0	5.0	28.6

Physical Data



#	Player	Total Distance (m)	Zone 1: 0-7 km/h (m)	Zone 2: 7-13km/h (m)	Zone 3: 13-19km/h (m)	Zone 4: 19-23km/h (m)	Zone 5: 23+ km/h (m)	High Speed Runs (Zone 4)	Sprints (Zone 5)	Top Speed (km/h)
23	MIKALSEN Aurora	4489.0	3223.5	1001.9	241.1	22.0	0	25.0	3.0	21.0
4	HANSEN Tuva	8066.2	2944.2	3477.4	1176.9	277.5	190.4	112.0	30.0	28.3
6	MJELDE Maren	10114.3	3826.2	4032.6	1955.1	283.2	19.2	152.0	25.0	29.9
8	BOE RISA Vilde	9993.3	2873.1	4471.0	2371.4	263.8	15.0	172.0	20.0	24.9
11	REITEN Guro	10650.9	3651.1	3717.2	2767.1	443.1	73.5	208.0	30.0	28.1
13	BJELDE Thea	9731.9	2811.6	4142.9	2295.8	428.2	52.6	179.0	33.0	29.3
15	EIKELAND Amalie	7134.3	1984.0	2868.7	1840.6	409.5	32.1	145.0	22.0	28.8
16	HARVIKEN Mathilde	10368.5	3575.1	3849.8	2398.2	480.1	65.3	207.0	32.0	27.4
18	MAANUM Frida	11199.1	3634.1	4151.5	2961.0	367.3	85.1	224.0	34.0	28.7
20	HAAVI Emilie	10608.6	3858.3	3617.5	2392.2	563.3	177.2	184.0	46.0	29.0
22	ROMAN HAUG Sophie	8853.7	2646.4	2781.0	2275.4	848.2	303.7	186.0	69.0	31.5
2	SONSTEVOLD Anja	2835.1	724.9	1057.2	809.7	187.4	56.1	53.0	13.0	28.5
7	SYRSTAD ENGEN Ingrid	1068.5	219.3	270.5	457.6	99.2	21.9	27.0	7.0	27.0
9	SAEVIK Karina	2418.5	688.8	943.5	543.4	108.8	134.0	46.0	12.0	28.9
10	GRAHAM HANSEN Caroline	4247.2	1456.8	1556.6	911.4	262.5	59.9	85.0	21.0	26.0
19	BRATBERG LUND Marit	919.2	232.8	332.5	301.1	52.7	0	18.0	3.0	29.0

