



# Colombia 2 - 0 Korea Republic

Group H - Match 16

25 July 2023

12:00 Kick Off

Sydney Football Stadium

**POST MATCH SUMMARY REPORT**

# Match Summary - Teams

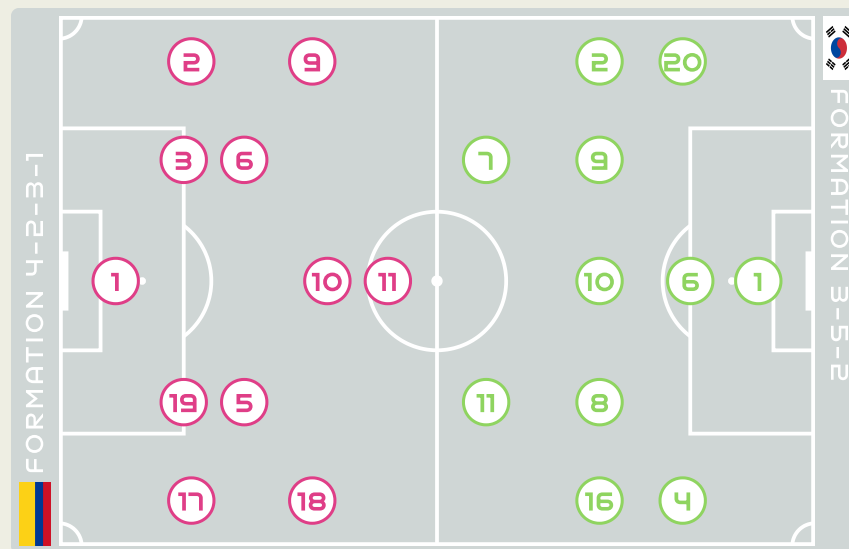


## STARTING

|    |    |                       |     |
|----|----|-----------------------|-----|
| 1  | GK | PEREZ Catalina        |     |
| 2  | DF | VANEGAS Manuela       | 10' |
| 3  | DF | ARIAS Daniela         |     |
| 5  | MF | BEDOYA DURANGO Lorena |     |
| 6  | MF | MONTOYA Daniela (C)   | 87' |
| 9  | FW | RAMIREZ Mayra         |     |
| 10 | MF | SANTOS Leicy          | 76' |
| 11 | FW | USME Catalina         | 30' |
| 17 | DF | ARIAS Carolina        | 51' |
| 18 | FW | CAICEDO Linda         | 39' |
| 19 | DF | CARABALI Jorelyn      |     |

## SUBSTITUTES

|    |    |                     |     |
|----|----|---------------------|-----|
| 12 | GK | SEPULVEDA Sandra    |     |
| 13 | GK | GIRALDO Natalia     |     |
| 4  | MF | OSPINA GARCIA Diana | 87' |
| 7  | MF | REYES Maria Camila  |     |
| 8  | MF | RESTREPO Marcela    | 76' |
| 14 | DF | BARON Angela        |     |
| 15 | DF | GUZMAN Ana          |     |
| 16 | MF | ANDRADE Lady        |     |
| 20 | DF | RAMOS Monica        |     |
| 21 | FW | CHACON Ivonne       |     |
| 22 | DF | CARACAS Daniela     |     |
| 23 | FW | BAHR Elexa          |     |



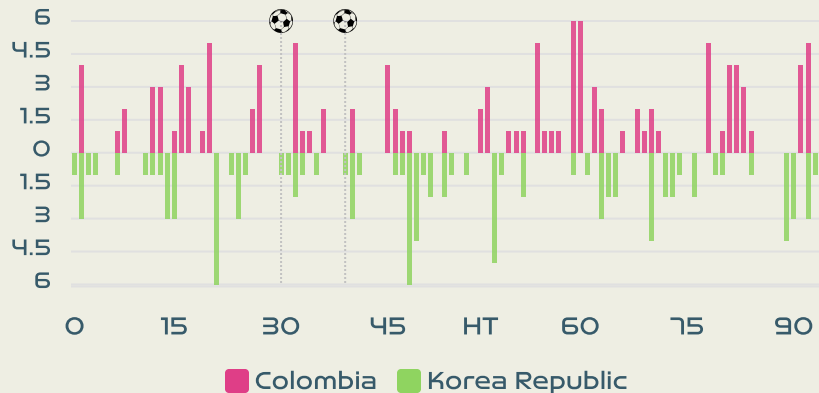
## STARTING

|                |               |    |    |
|----------------|---------------|----|----|
| YOON Younggeul | GK            | 1  |    |
| 88'            | CHOO Hyojoo   | DF | 2  |
| 28'            | SHIM Seoyeon  | DF | 4  |
| 52'            | LIM Seonjoo   | DF | 6  |
| 68'            | SON Hwayeon   | FW | 7  |
| 68'            | CHO Sohyun    | MF | 8  |
|                | LEE Geummin   | MF | 9  |
|                | JI Soyun      | MF | 10 |
| 78'            | CHOE Yuri     | FW | 11 |
|                | JANG Selgi    | DF | 16 |
|                | (C) KIM Hyeri | DF | 20 |

## SUBSTITUTES

|     |              |    |    |
|-----|--------------|----|----|
|     | KIM Jungmi   | GK | 18 |
|     | RYU Jisu     | GK | 21 |
|     | HONG Hyeji   | DF | 3  |
|     | KIM Yunji    | MF | 5  |
| 88' | MOON Mira    | FW | 12 |
| 68' | PARK Eunsun  | FW | 13 |
|     | JEON Eunha   | MF | 14 |
|     | CHUN Garam   | MF | 15 |
|     | LEE Youngju  | DF | 17 |
| 78' | PHAIR Casey  | FW | 19 |
|     | BAE Yebin    | MF | 22 |
| 68' | KANG Chaerim | FW | 23 |

## Distribution in the Final Third



# Match Summary - Key Statistics



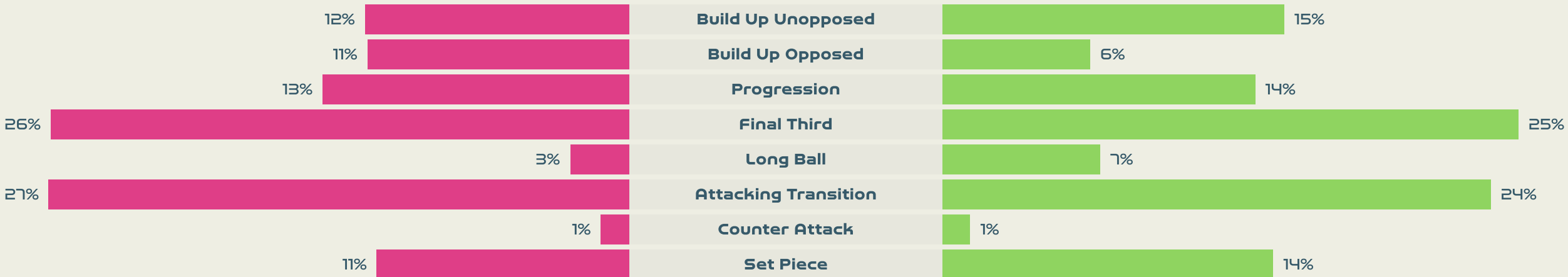
| Possession |  |       |           |
|------------|--|-------|-----------|
| Total      | 47%  | 35.1% | Total     |
| 2          | Goals  |       | 0         |
| 17 (6)     | Attempts at Goal (On Target)                   |       | 5 (3)     |
| 369 (273)  | Total Passes (Complete)                        |       | 257 (161) |
| 74 %       | Pass Completion %                              |       | 63 %      |
| 99         | Completed Line Breaks                          |       | 52        |
| 6          | Defensive Line Breaks                          |       | 5         |
| 105        | Receptions in the Final Third                  |       | 82        |
| 13         | Crosses  |       | 13        |
| 23         | Ball Progressions                              |       | 16        |
| 153 (48)   | Defensive Pressures Applied (Direct Pressures) |       | 314 (107) |
| 75         | Forced Turnovers                               |       | 85        |
| 104        | Second Balls                                   |       | 78        |
| 98.1 km    | Total Distance Covered                         |       | 100.4 km  |
| 4.2 km     | Zone 4 - Low Speed Sprinting: 19-23km/h        |       | 4.5 km    |



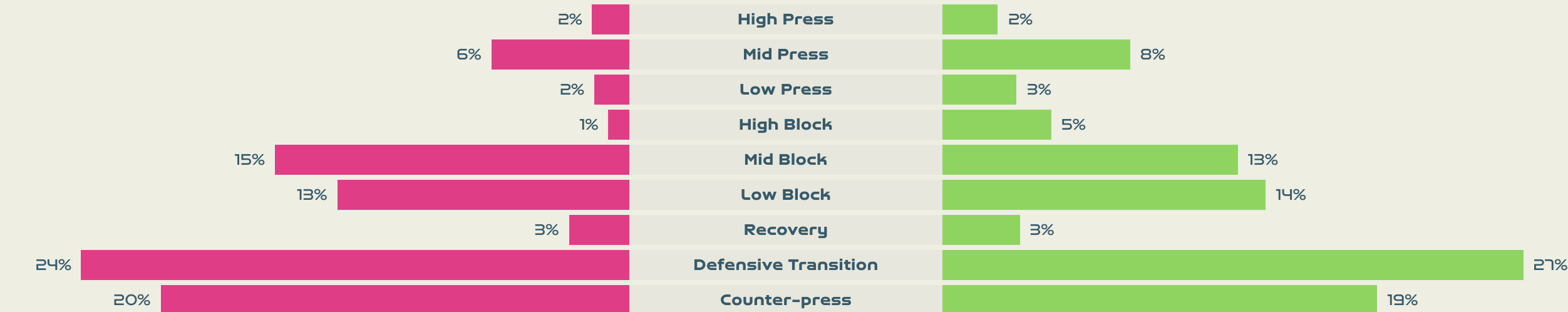
## Phases of Play



### IN POSSESSION



### OUT OF POSSESSION





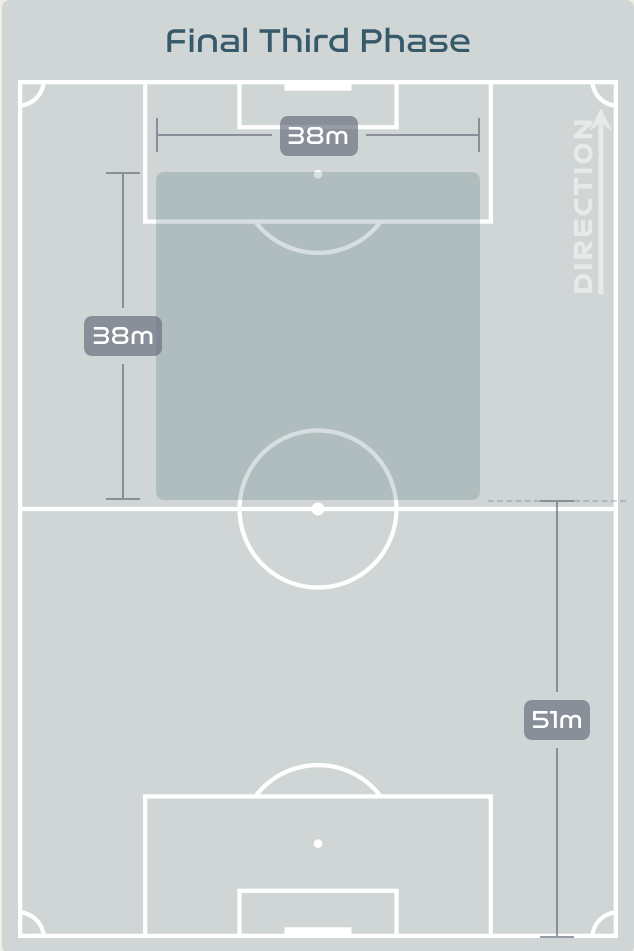
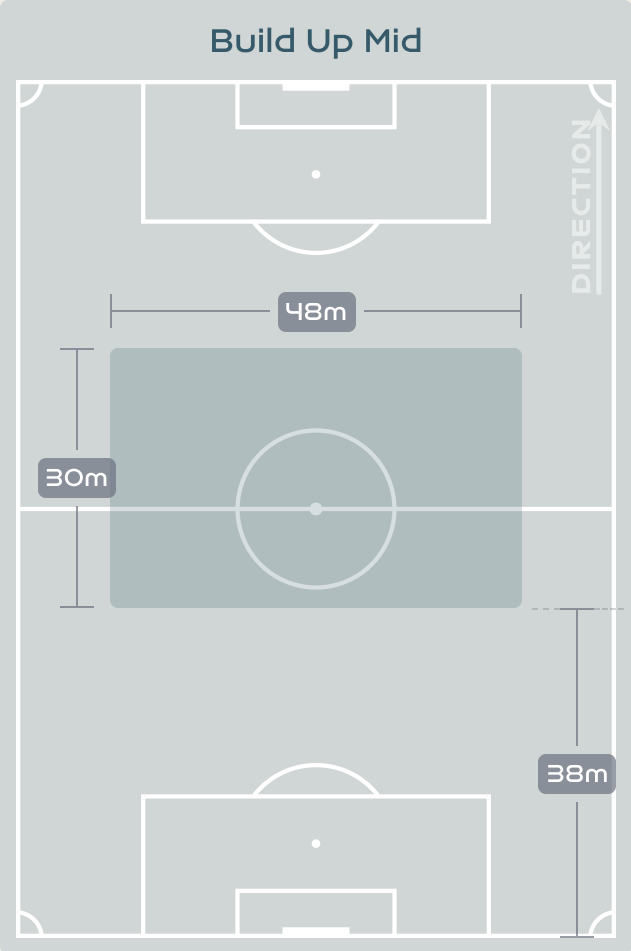
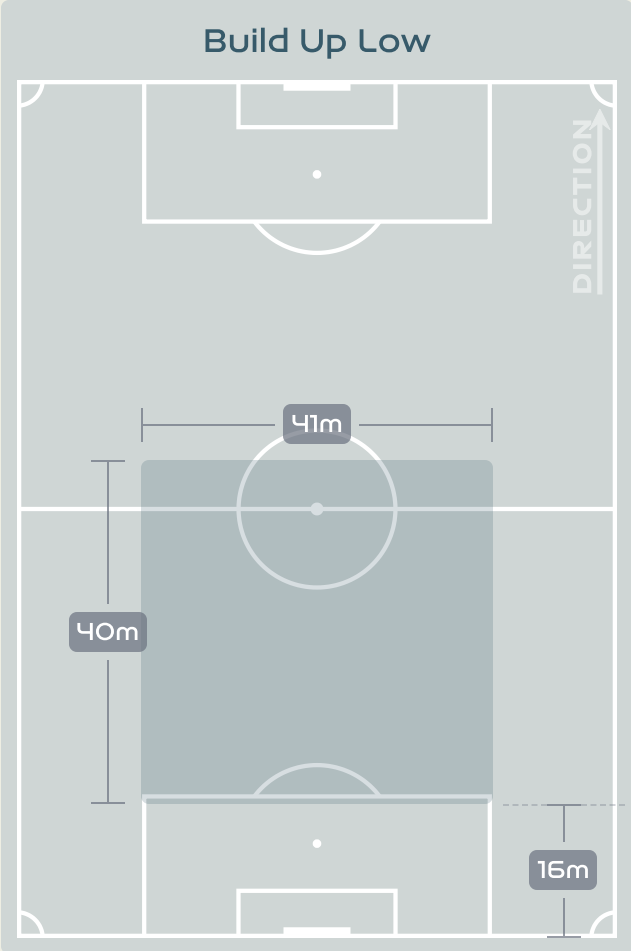
# IN POSSESSION



Colombia v Korea Republic

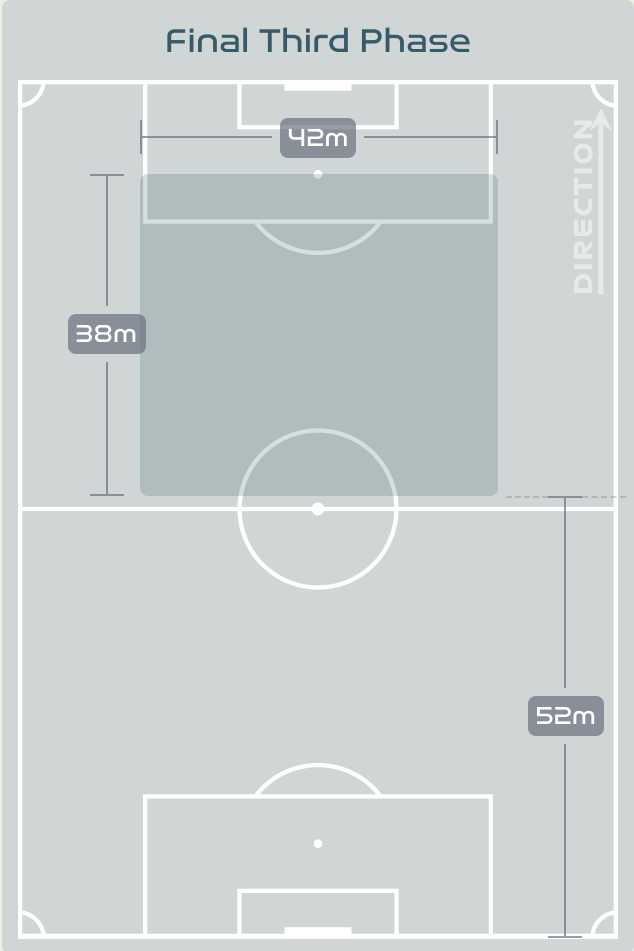
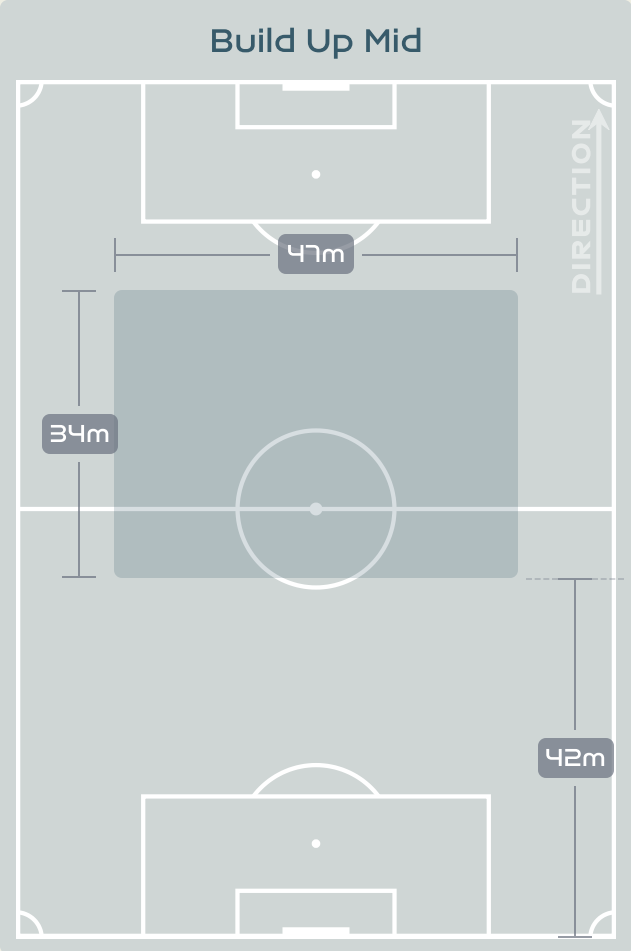
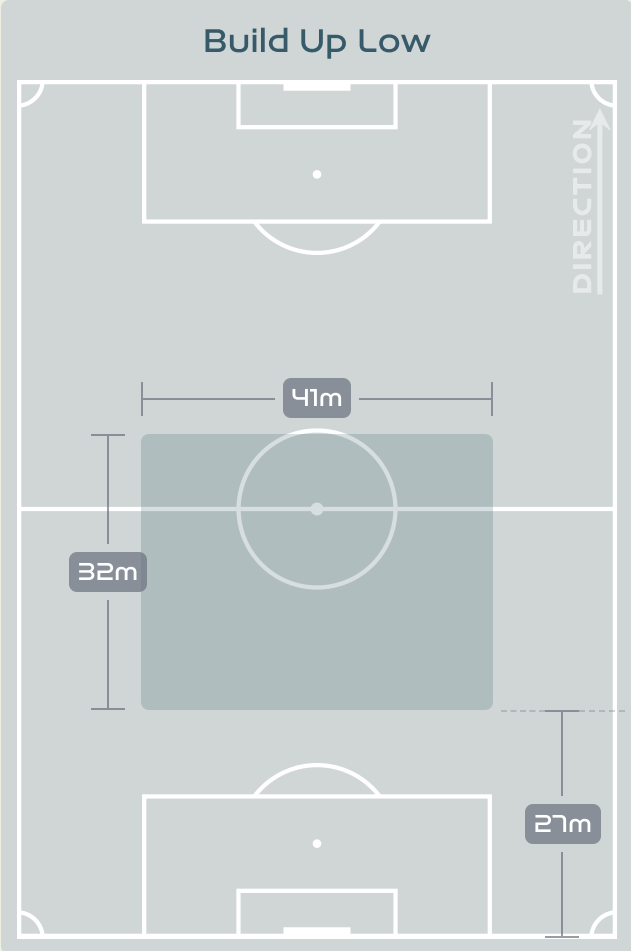


# In Possession Line Height & Team Length



# In Possession Line Height & Team Length

Korea Republic



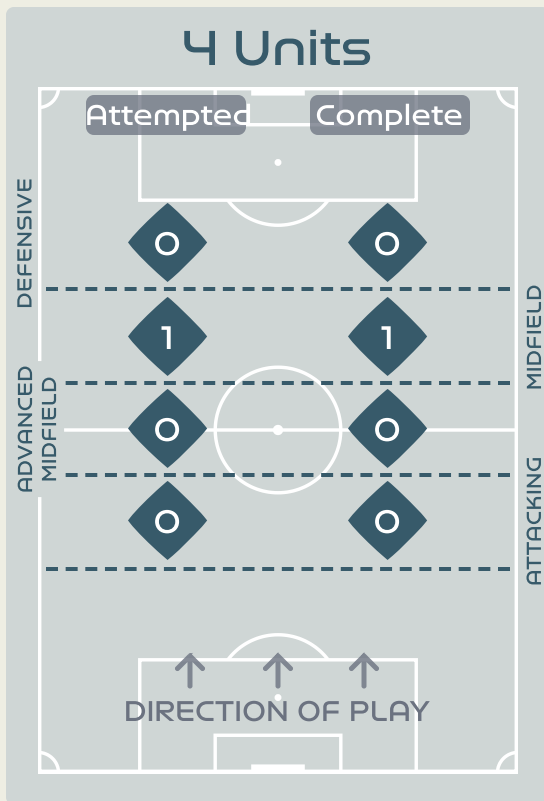
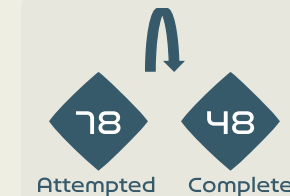
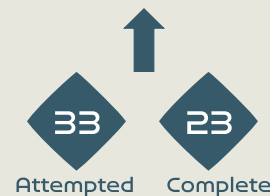
# Line Breaks



Colombia

Attempted Line Breaks

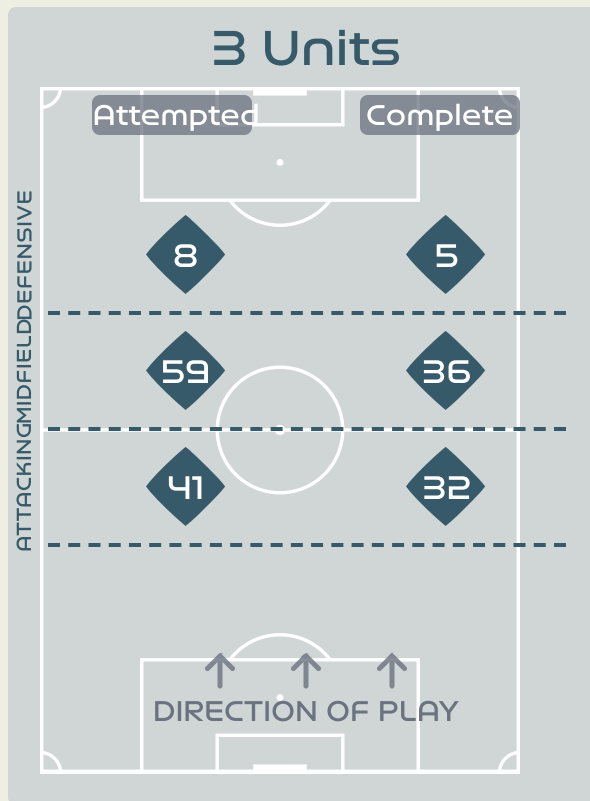
146



Attempted Line Breaks 1

Inside Shape 0

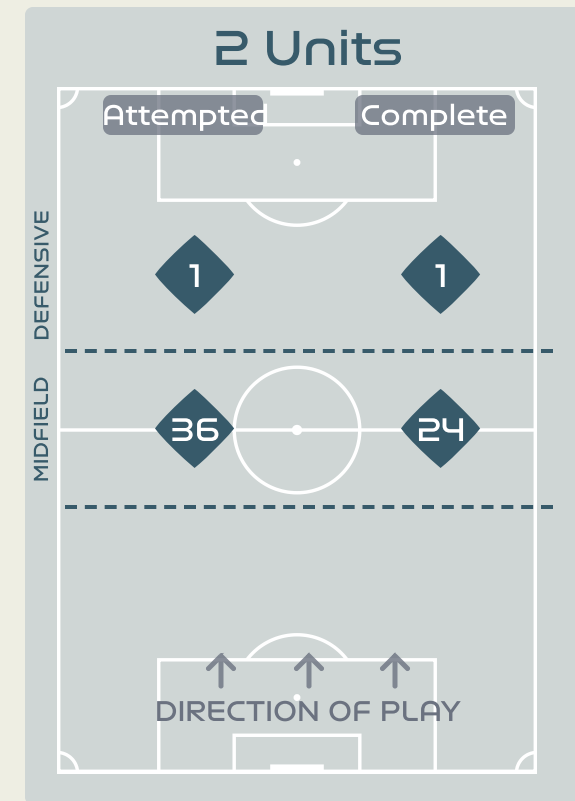
Outside Shape 1



Attempted Line Breaks 108

Inside Shape 62

Outside Shape 46



Attempted Line Breaks 37

Inside Shape 27

Outside Shape 10



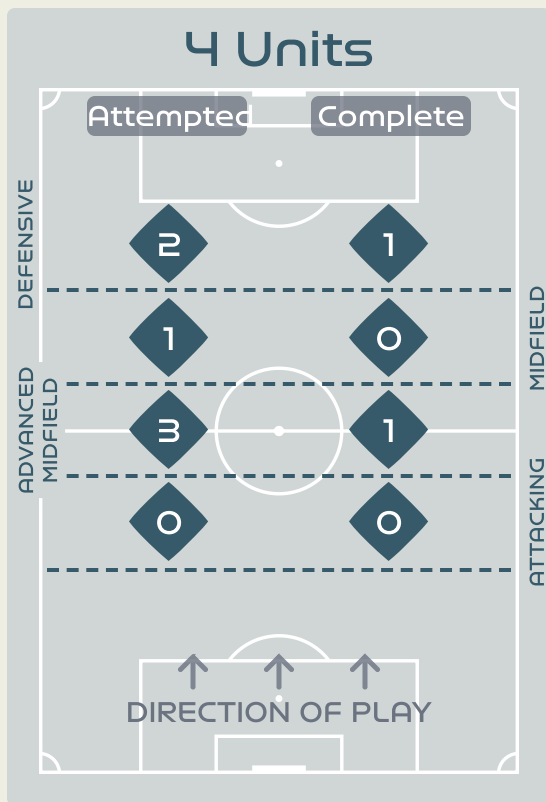
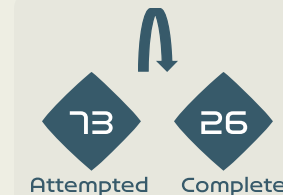
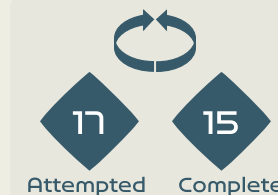
# Line Breaks



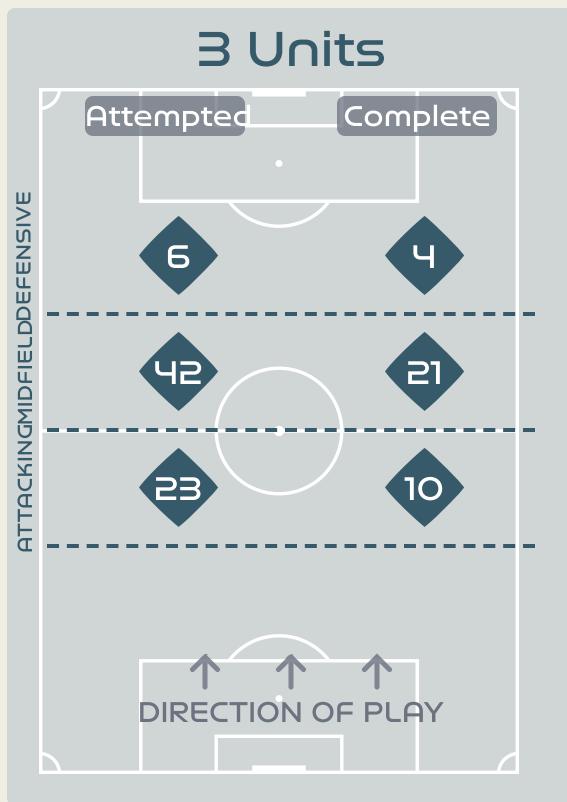
**Korea Republic**

Attempted Line Breaks

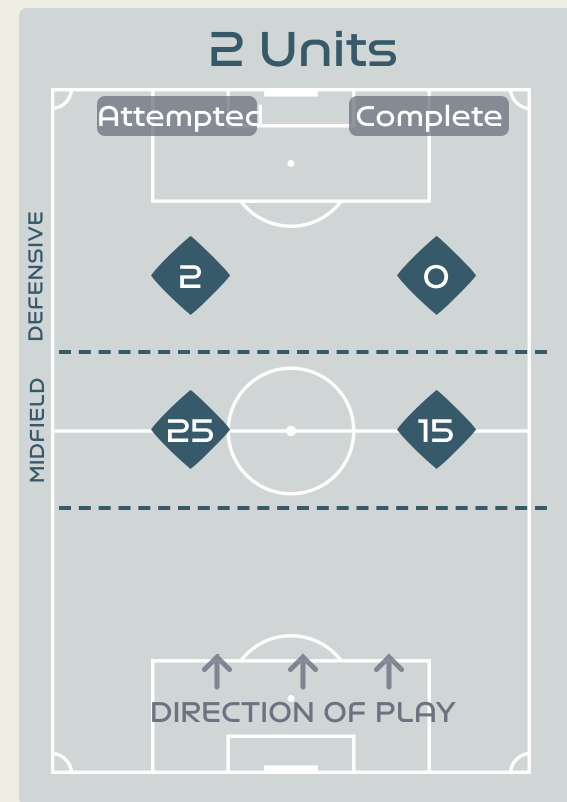
**104**



Attempted Line Breaks **6**  
 Inside Shape **6**  
 Outside Shape **0**



Attempted Line Breaks **71**  
 Inside Shape **52**  
 Outside Shape **19**



Attempted Line Breaks **27**  
 Inside Shape **22**  
 Outside Shape **5**

# Line Breaks



|    |                       |                       |                       |                         | 4 Units        |                         |               |                | 3 Units        |               |                | 2 Units       |                | Direction |        |      | Distribution Type |       |                  |
|----|-----------------------|-----------------------|-----------------------|-------------------------|----------------|-------------------------|---------------|----------------|----------------|---------------|----------------|---------------|----------------|-----------|--------|------|-------------------|-------|------------------|
| #  | Player                | Line Breaks Attempted | Line Breaks Completed | Line Break Completion % | Attacking Line | Attacking Midfield Line | Midfield Line | Defensive Line | Attacking Line | Midfield Line | Defensive Line | Midfield Line | Defensive Line | Through   | Around | Over | Pass              | Cross | Ball Progression |
| 1  | PEREZ Catalina        | 19                    | 7                     | 36%                     | 0              | 0                       | 0             | 0              | 8              | 8             | 0              | 3             | 0              | 0         | 0      | 19   | 19                | 0     | 0                |
| 2  | VANEGAS Manuela       | 24                    | 16                    | 66%                     | 0              | 0                       | 0             | 0              | 10             | 7             | 1              | 6             | 0              | 5         | 6      | 13   | 23                | 0     | 1                |
| 3  | ARIAS Daniela         | 4                     | 3                     | 75%                     | 0              | 0                       | 0             | 0              | 1              | 3             | 0              | 0             | 0              | 1         | 1      | 2    | 4                 | 0     | 0                |
| 5  | BEDOYA DURANGO Lorena | 16                    | 12                    | 75%                     | 0              | 0                       | 0             | 0              | 4              | 7             | 0              | 5             | 0              | 6         | 2      | 8    | 15                | 1     | 0                |
| 6  | MONTOYA Daniela       | 7                     | 6                     | 85%                     | 0              | 0                       | 0             | 0              | 1              | 3             | 0              | 3             | 0              | 4         | 2      | 1    | 7                 | 0     | 0                |
| 9  | RAMIREZ Mayra         | 5                     | 3                     | 60%                     | 0              | 0                       | 1             | 0              | 0              | 2             | 1              | 1             | 0              | 2         | 1      | 2    | 3                 | 1     | 1                |
| 10 | SANTOS Leicy          | 12                    | 8                     | 66%                     | 0              | 0                       | 0             | 0              | 3              | 3             | 1              | 4             | 1              | 5         | 3      | 4    | 12                | 0     | 0                |
| 11 | USME Catalina         | 11                    | 9                     | 81%                     | 0              | 0                       | 0             | 0              | 2              | 2             | 2              | 5             | 0              | 3         | 1      | 7    | 9                 | 1     | 1                |
| 17 | ARIAS Carolina        | 30                    | 25                    | 83%                     | 0              | 0                       | 0             | 0              | 8              | 16            | 1              | 5             | 0              | 3         | 13     | 14   | 30                | 0     | 0                |
| 18 | CAICEDO Linda         | 11                    | 6                     | 54%                     | 0              | 0                       | 0             | 0              | 1              | 6             | 0              | 4             | 0              | 2         | 6      | 3    | 9                 | 0     | 2                |
| 19 | CARABALI Jorelyn      | 4                     | 1                     | 25%                     | 0              | 0                       | 0             | 0              | 2              | 1             | 1              | 0             | 0              | 1         | 0      | 3    | 3                 | 0     | 1                |
| 4  | OSPINA GARCIA Diana   | 1                     | 1                     | 100%                    | 0              | 0                       | 0             | 0              | 1              | 0             | 0              | 0             | 0              | 1         | 0      | 0    | 1                 | 0     | 0                |
| 8  | RESTREPO Marcela      | 2                     | 2                     | 100%                    | 0              | 0                       | 0             | 0              | 0              | 1             | 1              | 0             | 0              | 0         | 0      | 2    | 2                 | 0     | 0                |

## Line Breaks

Korea Republic



|    |                |                       |                       |                         | 4 Units        |                         |               |                | 3 Units        |               |                | 2 Units       |                | Direction |        |      | Distribution Type |       |                  |
|----|----------------|-----------------------|-----------------------|-------------------------|----------------|-------------------------|---------------|----------------|----------------|---------------|----------------|---------------|----------------|-----------|--------|------|-------------------|-------|------------------|
| #  | Player         | Line Breaks Attempted | Line Breaks Completed | Line Break Completion % | Attacking Line | Attacking Midfield Line | Midfield Line | Defensive Line | Attacking Line | Midfield Line | Defensive Line | Midfield Line | Defensive Line | Through   | Around | Over | Pass              | Cross | Ball Progression |
| 1  | YOON Younggeul | 17                    | 2                     | 11%                     | 0              | 0                       | 0             | 0              | 7              | 5             | 0              | 5             | 0              | 0         | 0      | 17   | 17                | 0     | 0                |
| 2  | CHOO Hyojoo    | 4                     | 2                     | 50%                     | 0              | 0                       | 0             | 0              | 1              | 2             | 0              | 1             | 0              | 0         | 0      | 4    | 4                 | 0     | 0                |
| 4  | SHIM Seoyeon   | 7                     | 4                     | 57%                     | 0              | 0                       | 0             | 0              | 3              | 2             | 0              | 2             | 0              | 0         | 1      | 6    | 7                 | 0     | 0                |
| 6  | LIM Seonjoo    | 8                     | 3                     | 37%                     | 0              | 0                       | 0             | 0              | 0              | 5             | 0              | 2             | 1              | 0         | 0      | 8    | 8                 | 0     | 0                |
| 7  | SON Hwayeon    | 1                     | 1                     | 100%                    | 0              | 0                       | 0             | 0              | 0              | 1             | 0              | 0             | 0              | 0         | 1      | 0    | 1                 | 0     | 0                |
| 8  | CHO Sohyun     | 3                     | 2                     | 66%                     | 0              | 0                       | 0             | 0              | 1              | 1             | 1              | 0             | 0              | 2         | 0      | 1    | 3                 | 0     | 0                |
| 9  | LEE Geummin    | 6                     | 4                     | 66%                     | 0              | 0                       | 0             | 1              | 1              | 1             | 0              | 2             | 1              | 2         | 3      | 1    | 5                 | 1     | 0                |
| 10 | JI Soyun       | 15                    | 11                    | 73%                     | 0              | 0                       | 1             | 0              | 1              | 7             | 3              | 3             | 0              | 4         | 3      | 8    | 14                | 0     | 1                |
| 11 | CHOE Yuri      | 4                     | 3                     | 75%                     | 0              | 0                       | 0             | 0              | 1              | 0             | 0              | 3             | 0              | 1         | 1      | 2    | 4                 | 0     | 0                |
| 16 | JANG Selgi     | 16                    | 7                     | 43%                     | 0              | 2                       | 0             | 0              | 3              | 6             | 0              | 5             | 0              | 1         | 4      | 11   | 16                | 0     | 0                |
| 20 | KIM Hyeri      | 20                    | 12                    | 60%                     | 0              | 1                       | 0             | 1              | 4              | 10            | 2              | 2             | 0              | 2         | 3      | 15   | 18                | 1     | 1                |
| 12 | MOON Mira      | 1                     | 1                     | 100%                    | 0              | 0                       | 0             | 0              | 1              | 0             | 0              | 0             | 0              | 1         | 0      | 0    | 1                 | 0     | 0                |
| 13 | PARK Eunsun    | 1                     | 0                     | 0%                      | 0              | 0                       | 0             | 0              | 0              | 1             | 0              | 0             | 0              | 1         | 0      | 0    | 1                 | 0     | 0                |
| 19 | PHAIR Casey    | 0                     | 0                     | 0%                      | 0              | 0                       | 0             | 0              | 0              | 0             | 0              | 0             | 0              | 0         | 0      | 0    | 0                 | 0     | 0                |
| 23 | KANG Chaerim   | 1                     | 0                     | 0%                      | 0              | 0                       | 0             | 0              | 0              | 1             | 0              | 0             | 0              | 0         | 1      | 0    | 1                 | 0     | 0                |

# Passing Networks



| #  | Passes From ↓ to →    | PEREZ Catalina | VANEGAS Manuela | ARIAS Daniela | BEDOYA DURANGO Lorena | MONTOYA Daniela | RAMIREZ Mayra | SANTOS Leicy | USME Catalina | ARIAS Carolina | CAICEDO Linda | CARABALI Jorelyn | OSPINA GARCIA Diana | RESTREPO Marcela |
|----|-----------------------|----------------|-----------------|---------------|-----------------------|-----------------|---------------|--------------|---------------|----------------|---------------|------------------|---------------------|------------------|
| 1  | PEREZ Catalina        |                | 0               | 0             | 0                     | 0               | 5             | 0            | 1             | 1              | 0             | 0                | 0                   | 0                |
| 2  | VANEGAS Manuela       | 0              |                 | 1             | 4                     | 1               | 3             | 9            | 3             | 0              | 6             | 0                | 0                   | 1                |
| 3  | ARIAS Daniela         | 1              | 4               |               | 2                     | 0               | 0             | 1            | 0             | 0              | 1             | 1                | 0                   | 0                |
| 5  | BEDOYA DURANGO Lorena | 0              | 1               | 0             |                       | 4               | 0             | 5            | 6             | 1              | 4             | 1                | 0                   | 2                |
| 6  | MONTOYA Daniela       | 1              | 4               | 2             | 1                     |                 | 0             | 4            | 1             | 0              | 3             | 0                | 0                   | 0                |
| 9  | RAMIREZ Mayra         | 0              | 1               | 1             | 3                     | 3               |               | 2            | 2             | 4              | 5             | 0                | 0                   | 2                |
| 10 | SANTOS Leicy          | 0              | 5               | 1             | 4                     | 1               | 3             |              | 7             | 5              | 6             | 0                | 0                   | 0                |
| 11 | USME Catalina         | 0              | 2               | 0             | 2                     | 2               | 4             | 6            |               | 6              | 9             | 1                | 0                   | 1                |
| 17 | ARIAS Carolina        | 1              | 0               | 0             | 0                     | 0               | 9             | 0            | 3             |                | 4             | 2                | 0                   | 1                |
| 18 | CAICEDO Linda         | 0              | 7               | 0             | 4                     | 2               | 3             | 7            | 5             | 3              |               | 3                | 0                   | 0                |
| 19 | CARABALI Jorelyn      | 2              | 1               | 0             | 1                     | 0               | 0             | 0            | 1             | 2              | 0             |                  | 0                   | 0                |
| 4  | OSPINA GARCIA Diana   | 0              | 0               | 0             | 0                     | 0               | 0             | 0            | 0             | 0              | 2             | 0                |                     | 0                |
| 8  | RESTREPO Marcela      | 0              | 0               | 0             | 1                     | 0               | 2             | 0            | 2             | 2              | 0             | 0                | 1                   |                  |

| Top 5 Player to Player Passers |               |                        |
|--------------------------------|---------------|------------------------|
| Player                         | Passed To     | % of Total Team Passes |
| VANEGAS Manuela                | SANTOS Leicy  | 3.7%                   |
| USME Catalina                  | CAICEDO Linda | 3.7%                   |
| ARIAS Carolina                 | RAMIREZ Mayra | 3.7%                   |
| SANTOS Leicy                   | USME Catalina | 2.9%                   |
| CAICEDO Linda                  | SANTOS Leicy  | 2.9%                   |

# Passing Networks

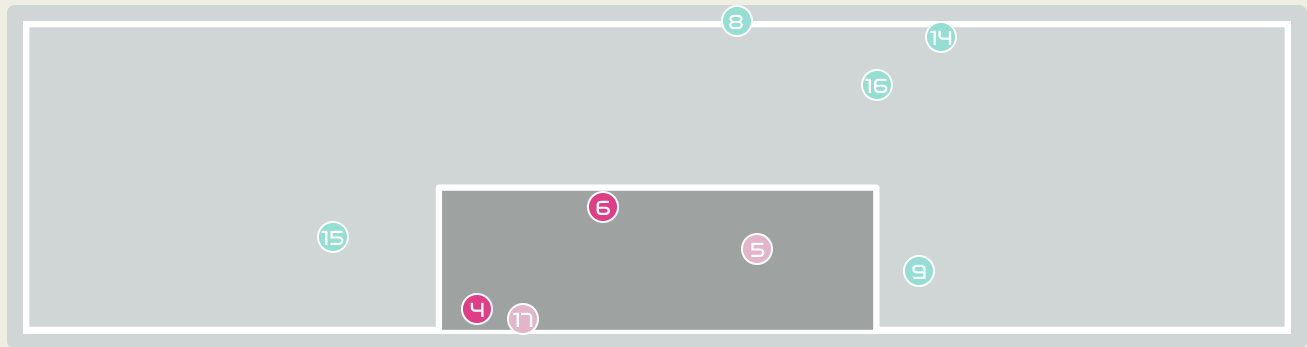
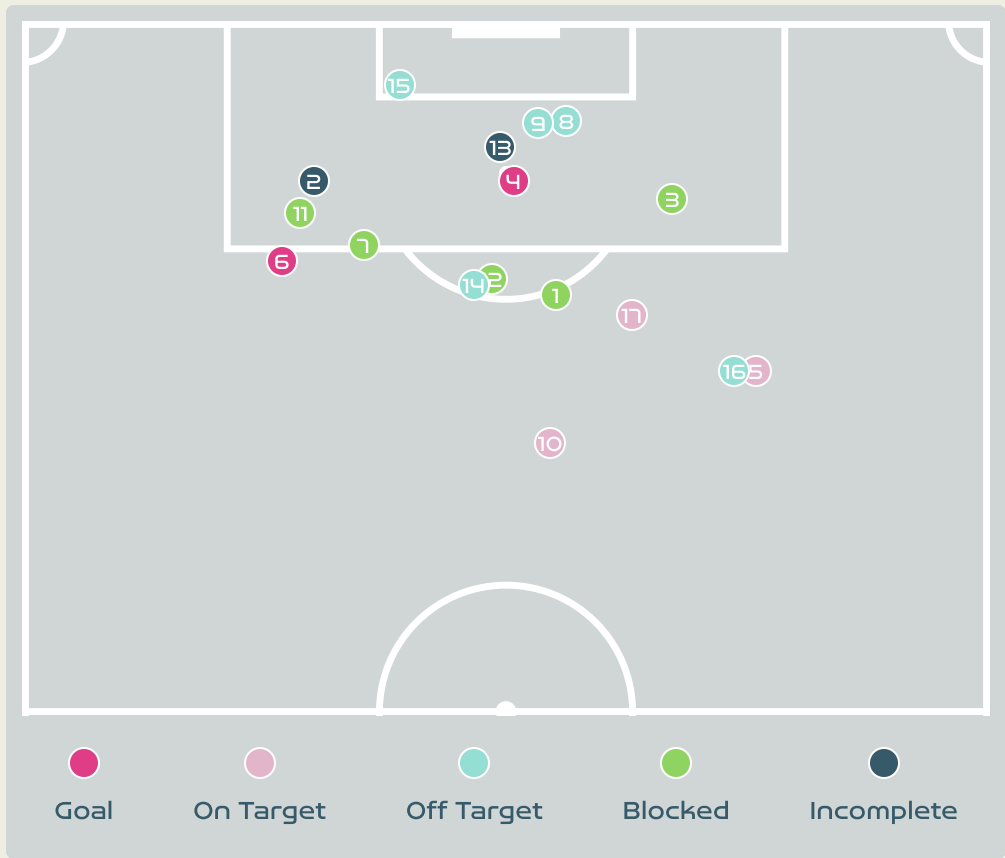
Korea Republic



| #  | Passes From ↓ to → | YOON Younggeul | CHOO Hyojoo | SHIM Seoyeon | LIM Seonjoo | SON Hwayeon | CHO Sohyun | LEE Geummin | JI Soyun | CHOE Yuri | JANG Selgi | KIM Hyeri | MOON Mira | PARK Eunsun | PHAIR Casey | KANG Chaerim |
|----|--------------------|----------------|-------------|--------------|-------------|-------------|------------|-------------|----------|-----------|------------|-----------|-----------|-------------|-------------|--------------|
| 1  | YOON Younggeul     |                | 0           | 0            | 0           | 0           | 0          | 0           | 0        | 0         | 0          | 1         | 0         | 0           | 0           | 0            |
| 2  | CHOO Hyojoo        | 0              |             | 0            | 0           | 0           | 0          | 1           | 1        | 2         | 1          | 0         | 0         | 0           | 0           | 0            |
| 4  | SHIM Seoyeon       | 1              | 2           |              | 3           | 0           | 0          | 0           | 1        | 1         | 2          | 0         | 0         | 0           | 0           | 0            |
| 6  | LIM Seonjoo        | 0              | 0           | 3            |             | 1           | 0          | 1           | 1        | 0         | 1          | 0         | 0         | 0           | 1           | 0            |
| 7  | SON Hwayeon        | 0              | 0           | 0            | 0           |             | 1          | 2           | 2        | 1         | 0          | 0         | 0         | 0           | 0           | 0            |
| 8  | CHO Sohyun         | 0              | 0           | 1            | 0           | 1           |            | 0           | 2        | 2         | 4          | 0         | 0         | 0           | 0           | 0            |
| 9  | LEE Geummin        | 0              | 0           | 0            | 0           | 2           | 2          |             | 7        | 1         | 2          | 2         | 0         | 1           | 1           | 0            |
| 10 | JI Soyun           | 0              | 2           | 1            | 5           | 0           | 2          | 9           |          | 3         | 1          | 2         | 0         | 0           | 0           | 1            |
| 11 | CHOE Yuri          | 0              | 1           | 0            | 1           | 1           | 1          | 1           | 4        |           | 0          | 3         | 0         | 0           | 0           | 0            |
| 16 | JANG Selgi         | 0              | 1           | 4            | 0           | 0           | 3          | 0           | 4        | 2         |            | 0         | 0         | 2           | 0           | 0            |
| 20 | KIM Hyeri          | 0              | 0           | 2            | 0           | 0           | 0          | 4           | 2        | 1         | 0          |           | 0         | 0           | 1           | 1            |
| 12 | MOON Mira          | 0              | 0           | 0            | 0           | 0           | 0          | 0           | 0        | 0         | 1          | 0         |           | 0           | 0           | 0            |
| 13 | PARK Eunsun        | 0              | 0           | 0            | 0           | 0           | 0          | 0           | 0        | 0         | 0          | 0         | 0         |             | 0           | 0            |
| 19 | PHAIR Casey        | 0              | 0           | 0            | 0           | 0           | 0          | 0           | 0        | 0         | 0          | 0         | 0         | 0           |             | 0            |
| 23 | KANG Chaerim       | 0              | 0           | 0            | 0           | 0           | 0          | 1           | 0        | 0         | 0          | 0         | 0         | 0           | 0           |              |

| Top 5 Player to Player Passers |             |                        |
|--------------------------------|-------------|------------------------|
| Player                         | Passed To   | % of Total Team Passes |
| JI Soyun                       | LEE Geummin | 7.2%                   |
| LEE Geummin                    | JI Soyun    | 5.6%                   |
| JI Soyun                       | LIM Seonjoo | 4%                     |
| CHO Sohyun                     | JANG Selgi  | 3.2%                   |
| CHOE Yuri                      | JI Soyun    | 3.2%                   |

# Attempts at Goal



| Key                                     | Outcome    | Shots |
|---|------------|-------|
| <span style="color: red;">●</span>      | Goals      | 2     |
| <span style="color: pink;">●</span>     | On Target  | 3     |
| <span style="color: teal;">●</span>     | Off Target | 5     |
| <span style="color: green;">●</span>    | Blocked    | 5     |
| <span style="color: darkblue;">●</span> | Incomplete | 2     |

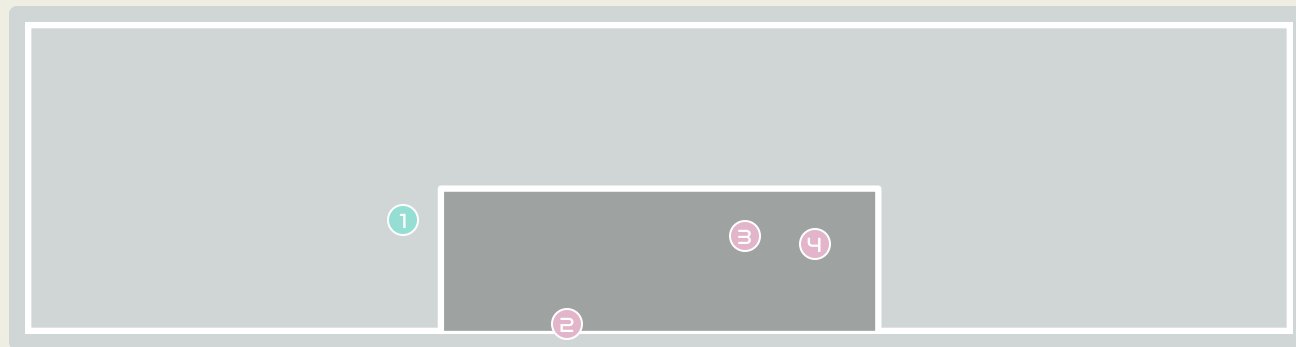
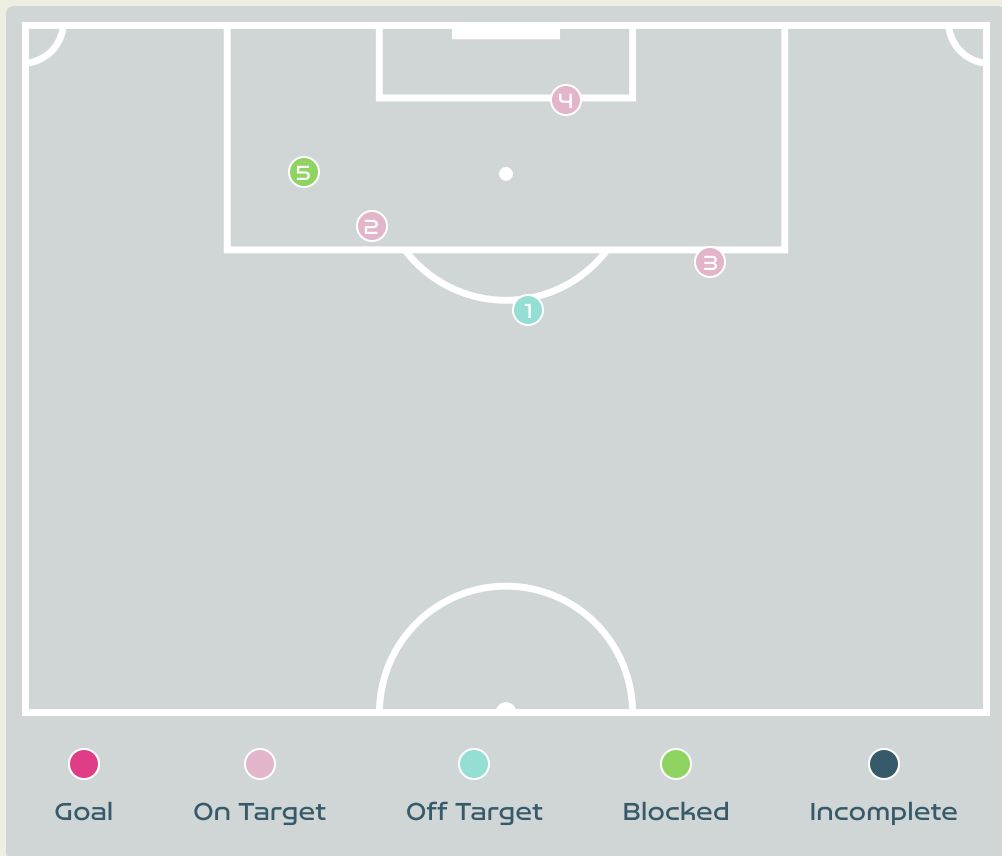
## Attempts at Goal



| Time | Player                  | Outcome                                | Body Part  | Delivery Type    |
|------|-------------------------|--|------------|------------------|
| 27   | 11 USME Catalina        | Incomplete - Blocked                   | Left Foot  | Loose Ball       |
| 27   | 10 SANTOS Leicy         | Incomplete                             | Right Foot | Loose Ball       |
| 27   | 2 VANEGAS Manuela       | Incomplete - Blocked                   | Left Foot  | Pass             |
| 29   | 11 USME Catalina        | On Target - Goal                       | Left Foot  | Penalty          |
| 37   | 11 USME Catalina        | On Target - Saved                      | Left Foot  | Freekick         |
| 38   | 18 CAICEDO Linda        | On Target - Goal                       | Right Foot | Ball Progression |
| 45   | 10 SANTOS Leicy         | Incomplete - Blocked                   | Left Foot  | Pass             |
| 55   | 9 RAMIREZ Mayra         | Off Target                             | Head       | Corner           |
| 60   | 9 RAMIREZ Mayra         | Off Target                             | Head       | Cross            |
| 63   | 5 BEDOYA DURANGO Lorena | On Target - Saved                      | Right Foot | Pass             |
| 66   | 5 BEDOYA DURANGO Lorena | On Target - Blocked                    | Right Foot | Interception     |
| 70   | 11 USME Catalina        | Incomplete - Blocked                   | Left Foot  | Pass             |
| 78   | 2 VANEGAS Manuela       | Incomplete - Player On Ball Error      | Head       | Corner           |
| 80   | 18 CAICEDO Linda        | Deflected Off Target - Defensive Event | Right Foot | Pass             |
| 81   | 19 CARABALI Jorelyn     | Off Target                             | Head       | Corner           |
| 87   | 11 USME Catalina        | Off Target                             | Left Foot  | Other            |
| 92   | 9 RAMIREZ Mayra         | On Target - Saved                      | Right Foot | Loose Ball       |

# Attempts at Goal

Korea Republic



| Key | Outcome    | Shots |
|-----|------------|-------|
|     | Goals      | 0     |
|     | On Target  | 3     |
|     | Off Target | 1     |
|     | Blocked    | 1     |
|     | Incomplete | 0     |



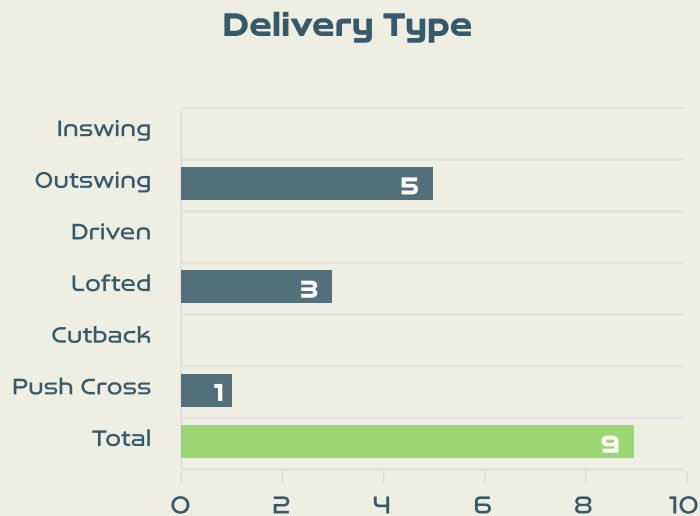
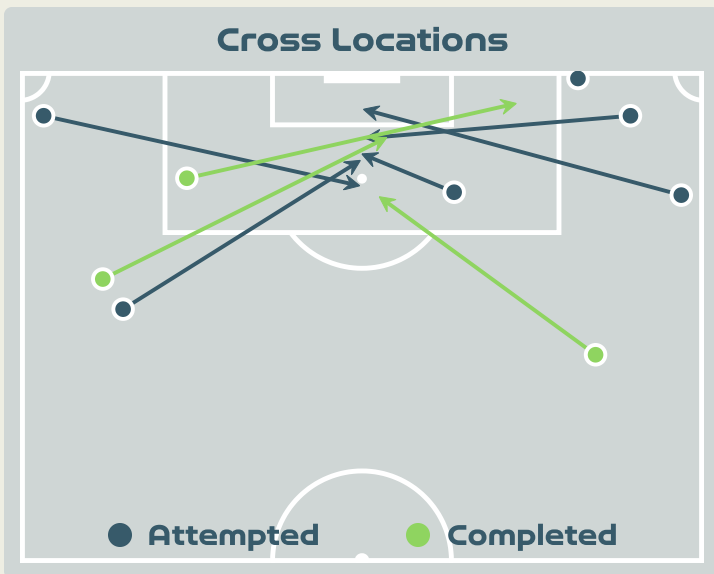
# Attempts at Goal

## Korea Republic

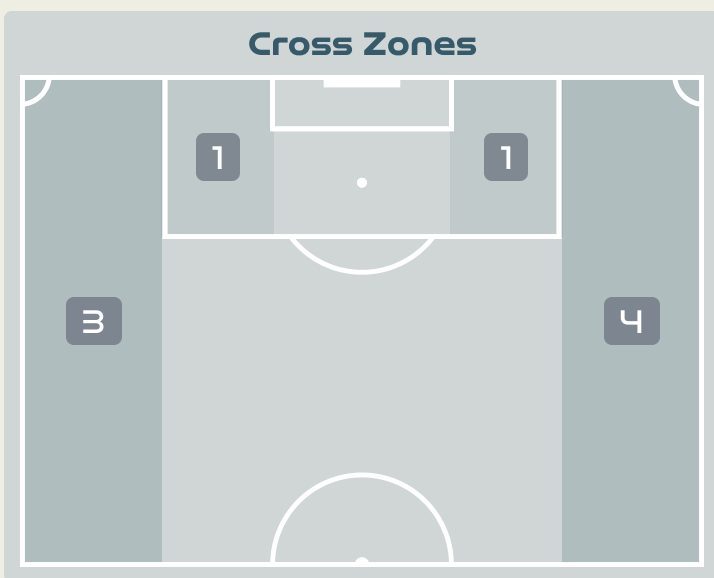


| Time | Player        | Outcome                                | Body Part  | Delivery Type |
|------|---------------|--|------------|---------------|
| 2    | 8 CHO Sohyun  | Deflected Off Target - Defensive Event | Right Foot | Pass          |
| 7    | 11 CHOE Yuri  | On Target - Saved                      | Left Foot  | Loose Ball    |
| 10   | 10 JI Soyun   | On Target - Saved                      | Right Foot | Freekick      |
| 53   | 9 LEE Geummin | On Target - Saved                      | Head       | Cross         |
| 54   | 11 CHOE Yuri  | Incomplete - Blocked                   | Right Foot | Loose Ball    |

# Crosses (Open Play)



| #  | Player                | Inswing | Outswing | Driven | Lofted | Cutback | Push Cross | Total Attempted |
|----|-----------------------|---------|----------|--------|--------|---------|------------|-----------------|
| 1  | PEREZ Catalina        | 0       | 0        | 0      | 0      | 0       | 0          | 0               |
| 2  | VANEGAS Manuela       | 0       | 1        | 0      | 0      | 0       | 0          | 1               |
| 3  | ARIAS Daniela         | 0       | 0        | 0      | 0      | 0       | 0          | 0               |
| 5  | BEDOYA DURANGO Lorena | 0       | 0        | 0      | 1      | 0       | 0          | 1               |
| 6  | MONTOYA Daniela       | 0       | 0        | 0      | 0      | 0       | 0          | 0               |
| 9  | RAMIREZ Mayra         | 0       | 1        | 0      | 1      | 0       | 1          | 3               |
| 10 | SANTOS Leicy          | 0       | 0        | 0      | 0      | 0       | 0          | 0               |
| 11 | USME Catalina         | 0       | 2        | 0      | 0      | 0       | 0          | 2               |
| 17 | ARIAS Carolina        | 0       | 1        | 0      | 0      | 0       | 0          | 1               |
| 18 | CAICEDO Linda         | 0       | 0        | 0      | 1      | 0       | 0          | 1               |
| 19 | CARABALI Jorelyn      | 0       | 0        | 0      | 0      | 0       | 0          | 0               |
| 4  | OSPINA GARCIA Diana   | 0       | 0        | 0      | 0      | 0       | 0          | 0               |
| 8  | RESTREPO Marcela      | 0       | 0        | 0      | 0      | 0       | 0          | 0               |



**Attempted**

**9**

**Completed**

**3**

**Most Crosses Attempted**

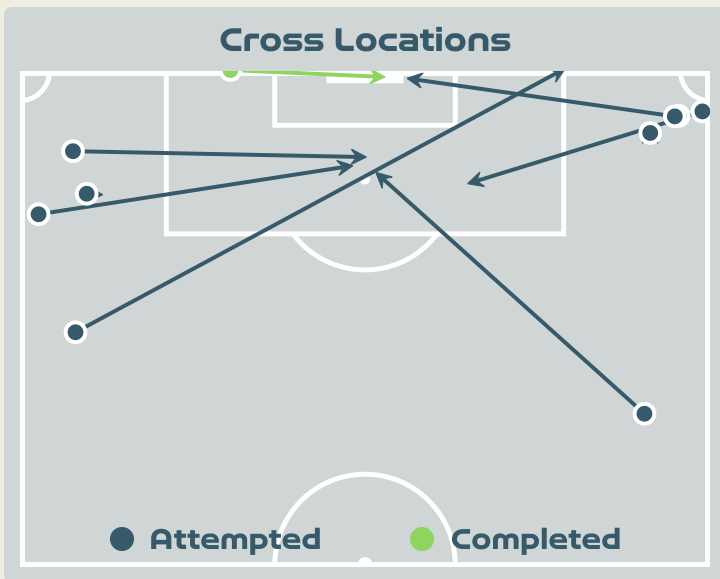
**3**

**RAMIREZ Mayra**  
ATTACKING MIDFIELD LEFT

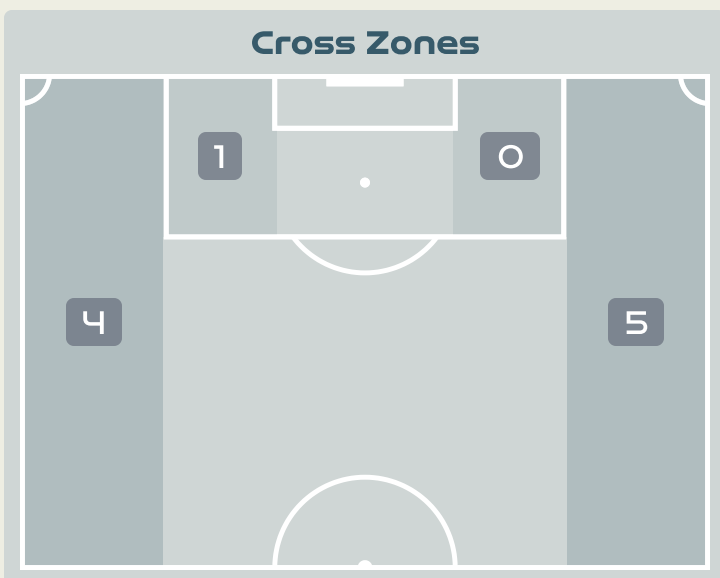
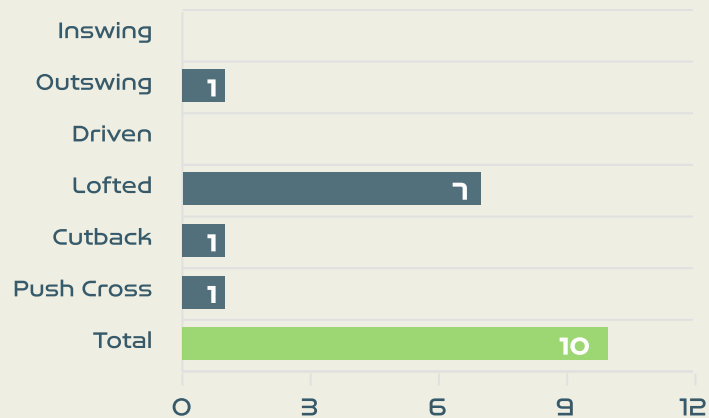
# Korea Republic



## Crosses (Open Play)



### Delivery Type



Attempted

10

Completed

1

Most Crosses Attempted

2

**CHO Sohyun**  
LEFT CENTRE MIDFIELD

| #  | Player         | Inswing | Outswing | Driven | Lofted | Cutback | Push Cross | Total Attempted |
|----|----------------|---------|----------|--------|--------|---------|------------|-----------------|
| 1  | YOON Younggeul | 0       | 0        | 0      | 0      | 0       | 0          | 0               |
| 2  | CHOO Hyojoo    | 0       | 0        | 0      | 1      | 0       | 0          | 1               |
| 4  | SHIM Seoyeon   | 0       | 0        | 0      | 0      | 0       | 0          | 0               |
| 6  | LIM Seonjoo    | 0       | 0        | 0      | 0      | 0       | 0          | 0               |
| 7  | SON Hwayeon    | 0       | 0        | 0      | 0      | 0       | 1          | 1               |
| 8  | CHO Sohyun     | 0       | 1        | 0      | 1      | 0       | 0          | 2               |
| 9  | LEE Geummin    | 0       | 0        | 0      | 1      | 0       | 0          | 1               |
| 10 | JI Soyun       | 0       | 0        | 0      | 1      | 0       | 0          | 1               |
| 11 | CHOE Yuri      | 0       | 0        | 0      | 1      | 0       | 0          | 1               |
| 16 | JANG Selgi     | 0       | 0        | 0      | 0      | 0       | 0          | 0               |
| 20 | KIM Hyeri      | 0       | 0        | 0      | 2      | 0       | 0          | 2               |
| 12 | MOON Mira      | 0       | 0        | 0      | 0      | 0       | 0          | 0               |
| 13 | PARK Eunsun    | 0       | 0        | 0      | 0      | 0       | 0          | 0               |
| 19 | PHAIR Casey    | 0       | 0        | 0      | 0      | 0       | 0          | 0               |
| 23 | KANG Chaerim   | 0       | 0        | 0      | 0      | 1       | 0          | 1               |



# Offering to Receive

337

Total Offers Made

114

Total Offers Received

Most Offers

70

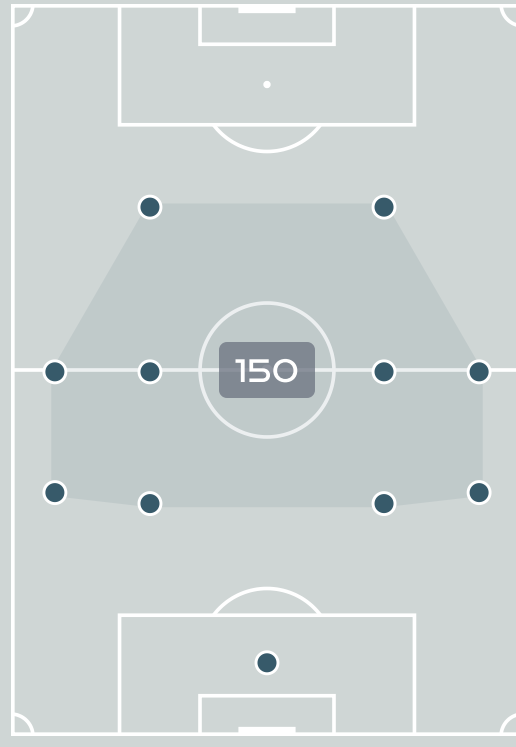
RAMIREZ Mayra  
ATTACKING MIDFIELD LEFT

| #  | Player                | Offers Made | Offers Received | % Made & Received |
|----|-----------------------|-------------|-----------------|-------------------|
| 1  | PEREZ Catalina        | 3           | 1               | 33.3%             |
| 2  | VANEGAS Manuela       | 33          | 16              | 48.5%             |
| 3  | ARIAS Daniela         | 13          | 4               | 30.8%             |
| 5  | BEDOYA DURANGO Lorena | 15          | 7               | 46.7%             |
| 6  | MONTOYA Daniela       | 32          | 5               | 15.6%             |
| 9  | RAMIREZ Mayra         | 70          | 19              | 27.1%             |
| 10 | SANTOS Leicy          | 40          | 10              | 25%               |
| 11 | USME Catalina         | 62          | 21              | 33.9%             |
| 17 | ARIAS Carolina        | 26          | 13              | 50%               |
| 18 | CAICEDO Linda         | 24          | 14              | 58.3%             |
| 19 | CARABALI Jorelyn      | 7           | 0               | 0%                |
| 4  | OSPINA GARCIA Diana   | 2           | 1               | 50%               |
| 8  | RESTREPO Marcela      | 10          | 3               | 30%               |

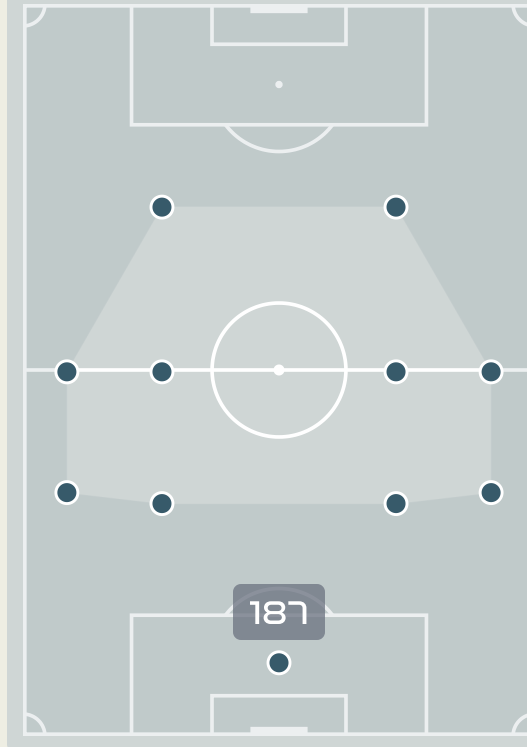
163

Offers Made in Final Third

Offers Made Inside Shape



Offers Made Outside Shape



146

Offers Made in Middle Third

28

Offers Made in Defensive Third

# Offering to Receive

Korea Republic



276

Total Offers Made

76

Total Offers Received

Most Offers

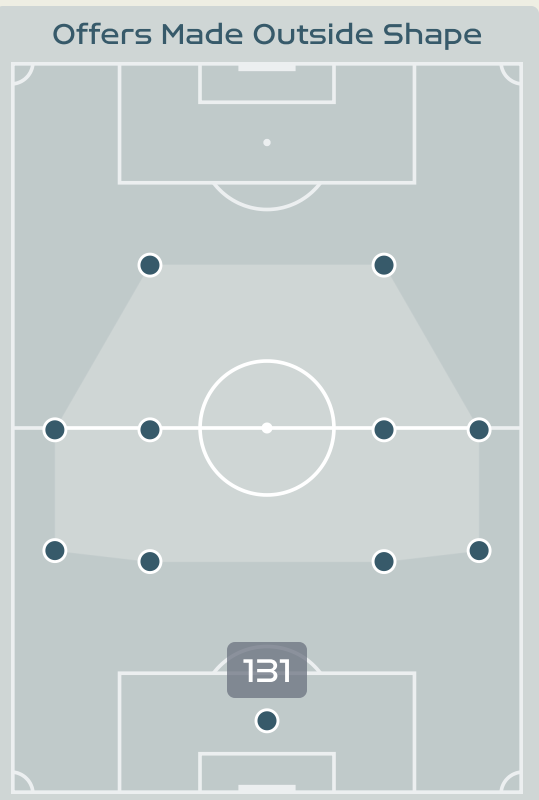
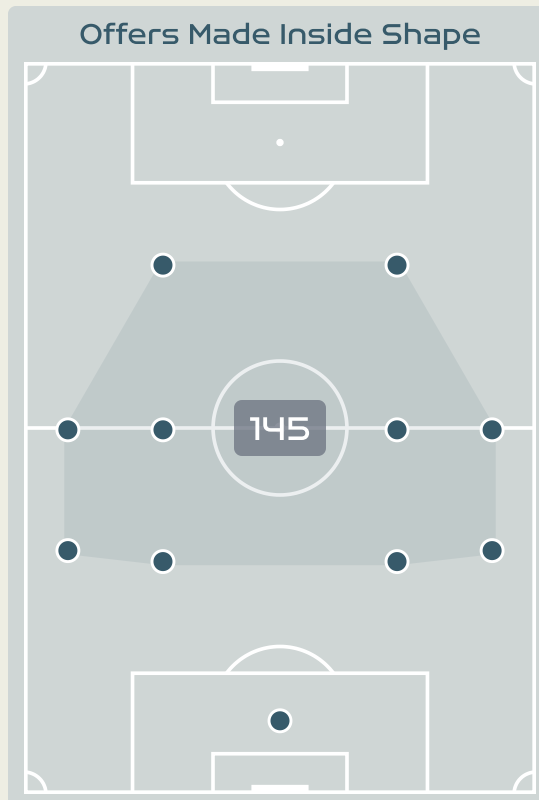
67

LEE Geummin  
RIGHT CENTRE MIDFIELD

| #  | Player         | Offers Made | Offers Received | % Made & Received |
|----|----------------|-------------|-----------------|-------------------|
| 1  | YOON Younggeul | 3           | 1               | 33.3%             |
| 2  | CHOO Hyojoo    | 30          | 7               | 23.3%             |
| 4  | SHIM Seoyeon   | 3           | 2               | 66.7%             |
| 6  | LIM Seonjoo    | 8           | 2               | 25%               |
| 7  | SON Hwayeon    | 19          | 6               | 31.6%             |
| 8  | CHO Sohyun     | 37          | 8               | 21.6%             |
| 9  | LEE Geummin    | 67          | 15              | 22.4%             |
| 10 | JI Soyun       | 28          | 12              | 42.9%             |
| 11 | CHOE Yuri      | 14          | 5               | 35.7%             |
| 16 | JANG Selgi     | 26          | 11              | 42.3%             |
| 20 | KIM Hyeri      | 16          | 4               | 25%               |
| 12 | MOON Mira      | 1           | 0               | 0%                |
| 13 | PARK Eunsun    | 19          | 2               | 10.5%             |
| 19 | PHAIR Casey    | 0           | 0               | 0%                |
| 23 | KANG Chaerim   | 5           | 1               | 20%               |

154

Offers Made in Final Third



91

Offers Made in Middle Third

31

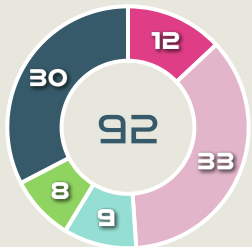
Offers Made in Defensive Third



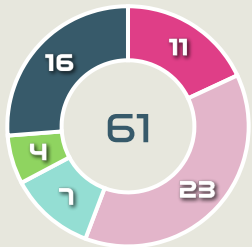
# Movement to Receive

## Movement Types by Phase

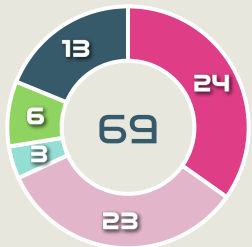
### Final Third Phase



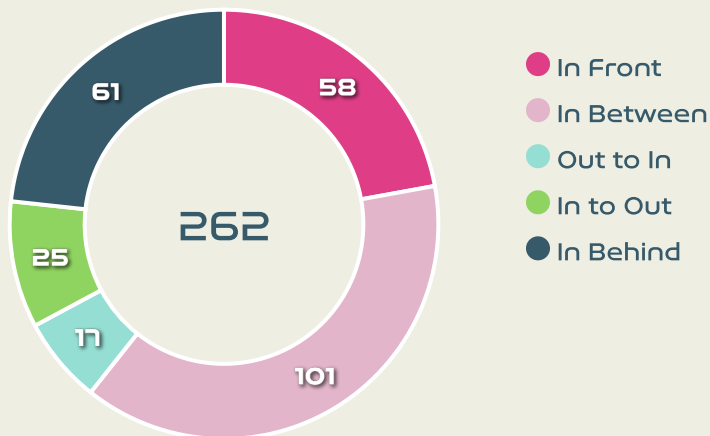
### Progression Phase



### Build Up Phase



## All Movement Types

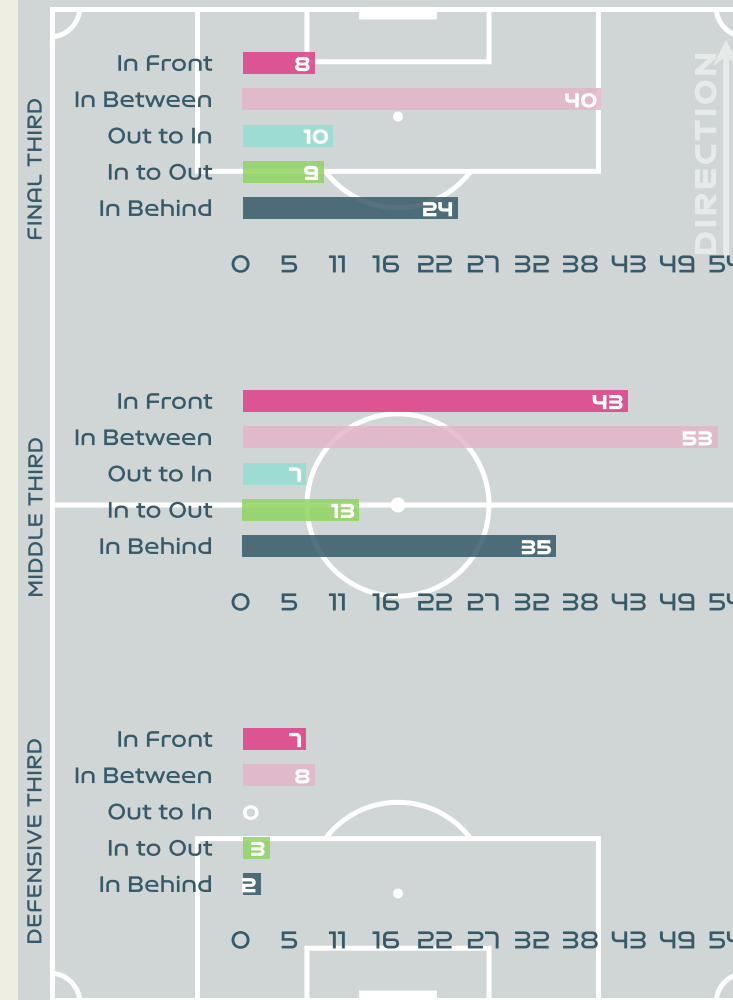


- In Front
- In Between
- Out to In
- In to Out
- In Behind

## Top Ranked Players

| Type       | Player            | Movements |
|------------|-------------------|-----------|
| In Front   | 6 MONTOYA Daniela | 14        |
| In Between | 11 USME Catalina  | 36        |
| Out to In  | 9 RAMIREZ Mayra   | 6         |
| In to Out  | 11 USME Catalina  | 9         |
| In Behind  | 9 RAMIREZ Mayra   | 24        |

## Movement Types Pitch Third



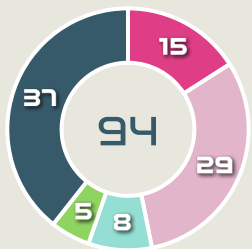
# Movement to Receive

Korea Republic

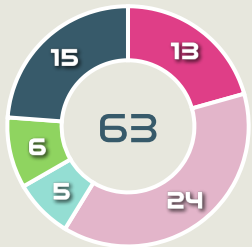


## Movement Types by Phase

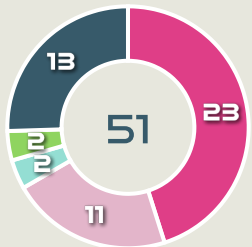
### Final Third Phase



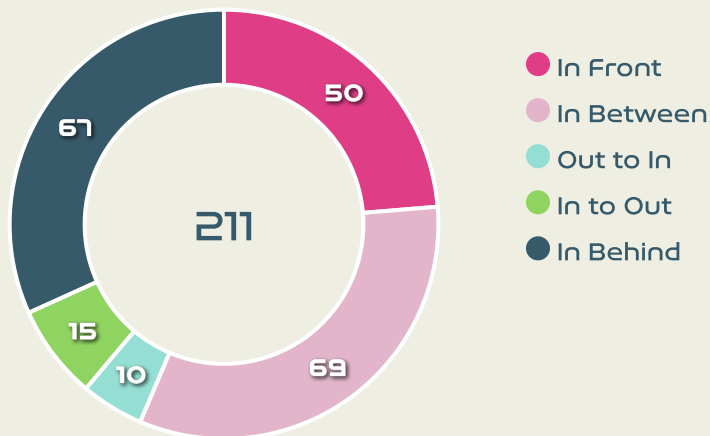
### Progression Phase



### Build Up Phase



## All Movement Types

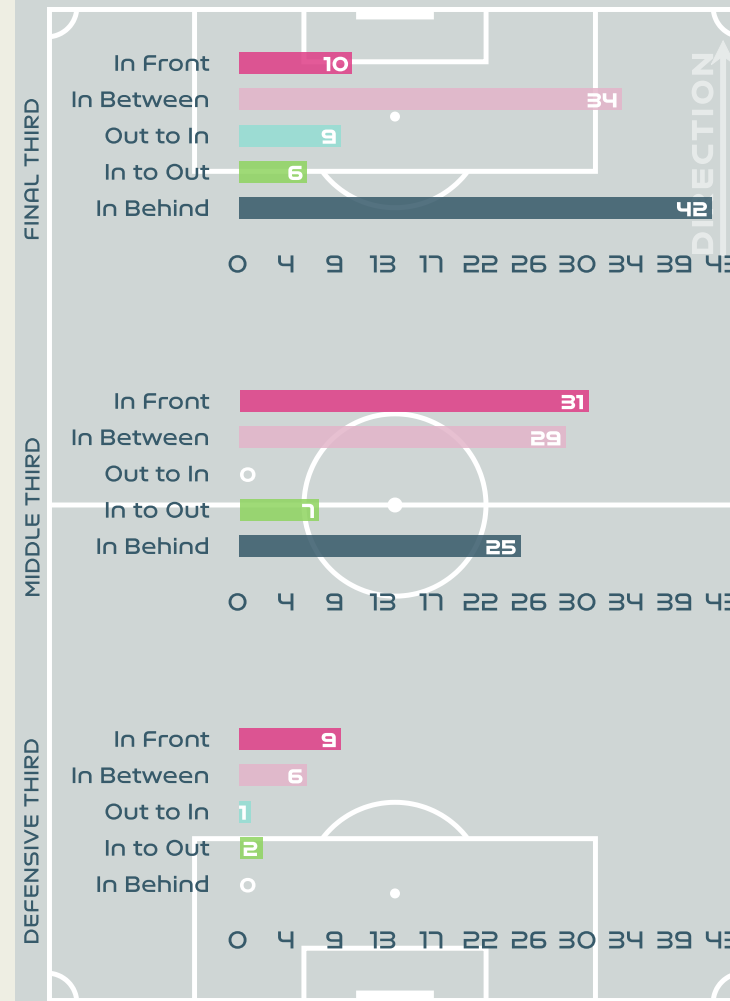


- In Front
- In Between
- Out to In
- In to Out
- In Behind

## Top Ranked Players

| Type       | Player        | Movements |
|------------|---------------|-----------|
| In Front   | 8 CHO Sohyun  | 10        |
| In Between | 9 LEE Geummin | 18        |
| Out to In  | 9 LEE Geummin | 3         |
| In to Out  | 9 LEE Geummin | 8         |
| In Behind  | 9 LEE Geummin | 20        |

## Movement Types Pitch Third





# OUT OF POSSESSION



Colombia v Korea Republic







# Defensive Actions

**75**

Forced Turnovers

**61**

Possession Regained

**5**

Interceptions

**35**

Tackles

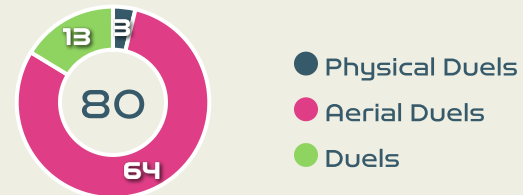
**3.91**

Possession Actions / Defensive Action

## Blocks



## Possession Contests

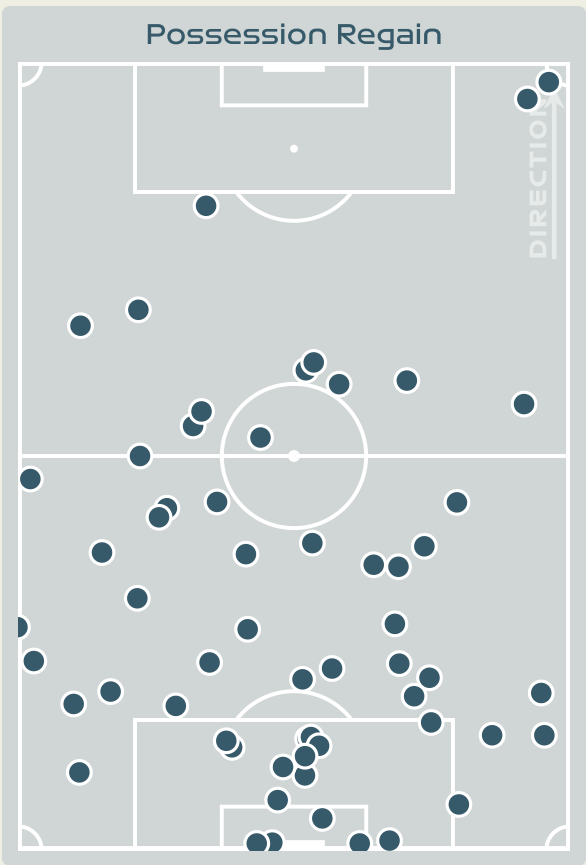
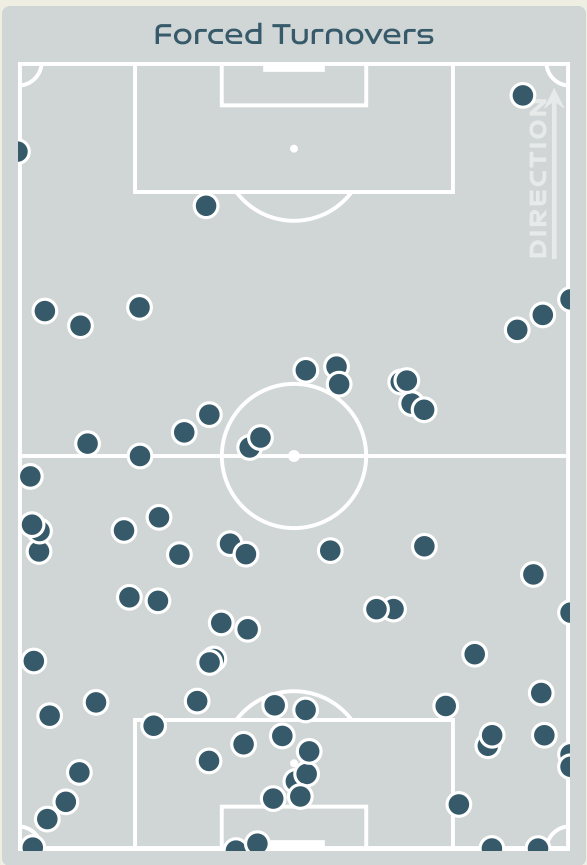


## Most Possession Regains

**9**

**PEREZ Catalina**

GOALKEEPER



| #  | Player                | Total Possession Regains |
|----|-----------------------|--------------------------|
| 1  | PEREZ Catalina        | 9                        |
| 2  | VANEGAS Manuela       | 7                        |
| 3  | ARIAS Daniela         | 4                        |
| 5  | BEDOYA DURANGO Lorena | 8                        |
| 6  | MONTOYA Daniela       | 4                        |
| 9  | RAMIREZ Mayra         | 2                        |
| 10 | SANTOS Leicy          | 6                        |
| 11 | USME Catalina         | 4                        |
| 17 | ARIAS Carolina        | 4                        |
| 18 | CAICEDO Linda         | 3                        |
| 19 | CARABALI Jorelyn      | 9                        |
| 4  | OSPINA GARCIA Diana   | 1                        |
| 8  | RESTREPO Marcela      | 0                        |

# Korea Republic



## Defensive Actions

**85**

Forced Turnovers

**65**

Possession Regained

**9**

Interceptions

**73**

Tackles

**1.61**

Possession Actions / Defensive Action

## Blocks



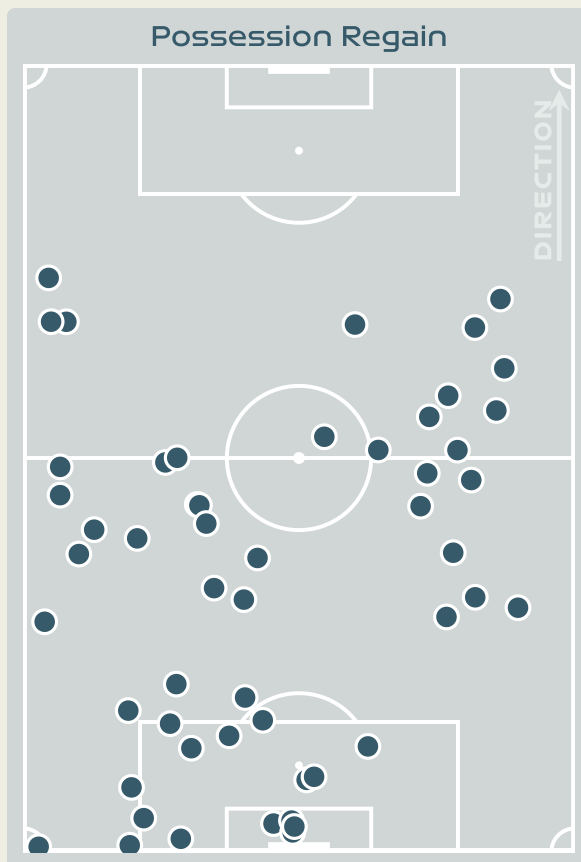
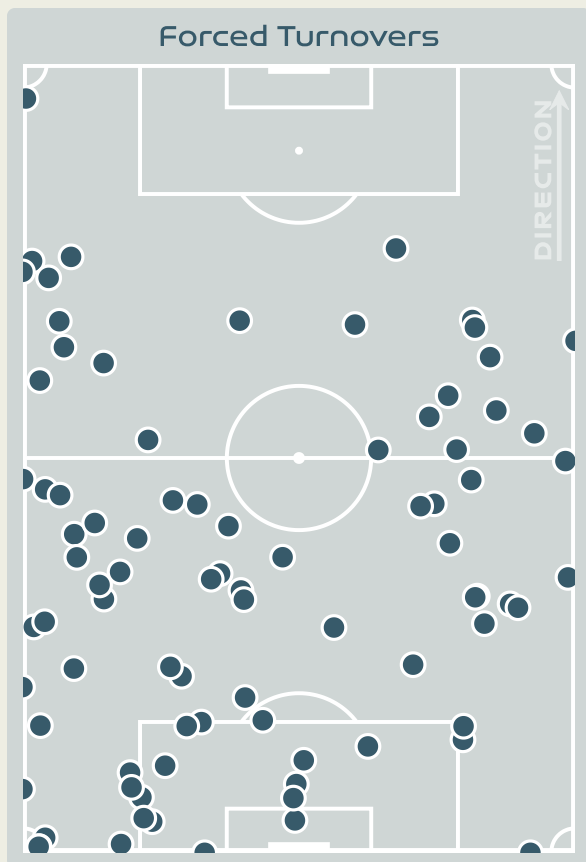
## Possession Contests



## Most Possession Regains

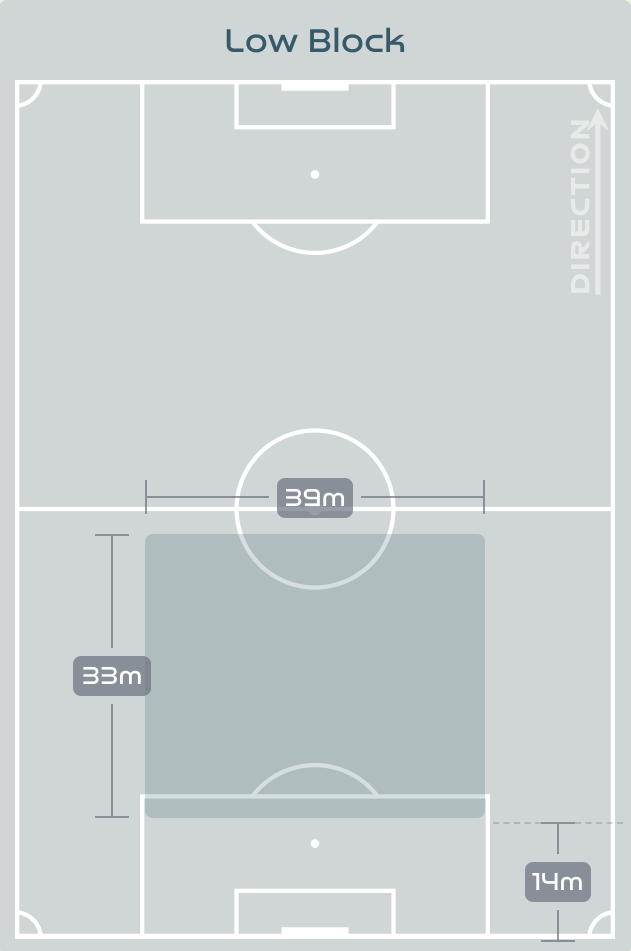
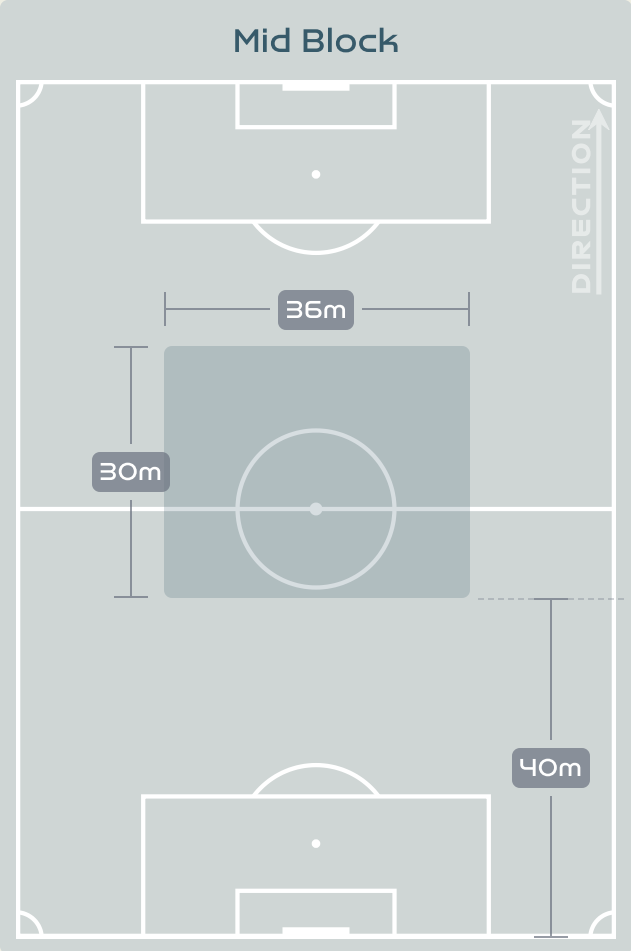
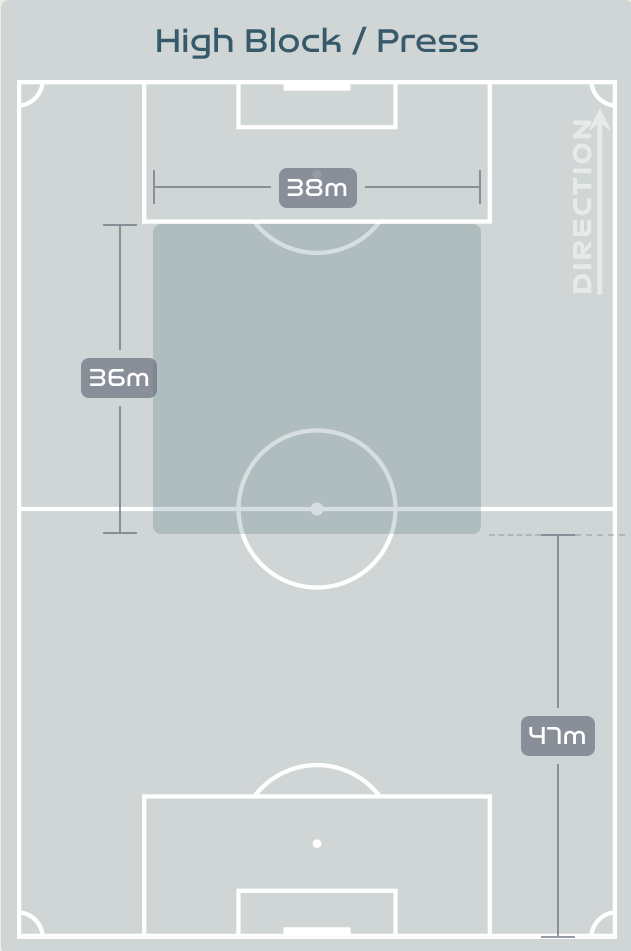
**9**

**LIM Seonjoo**  
CENTRE BACK



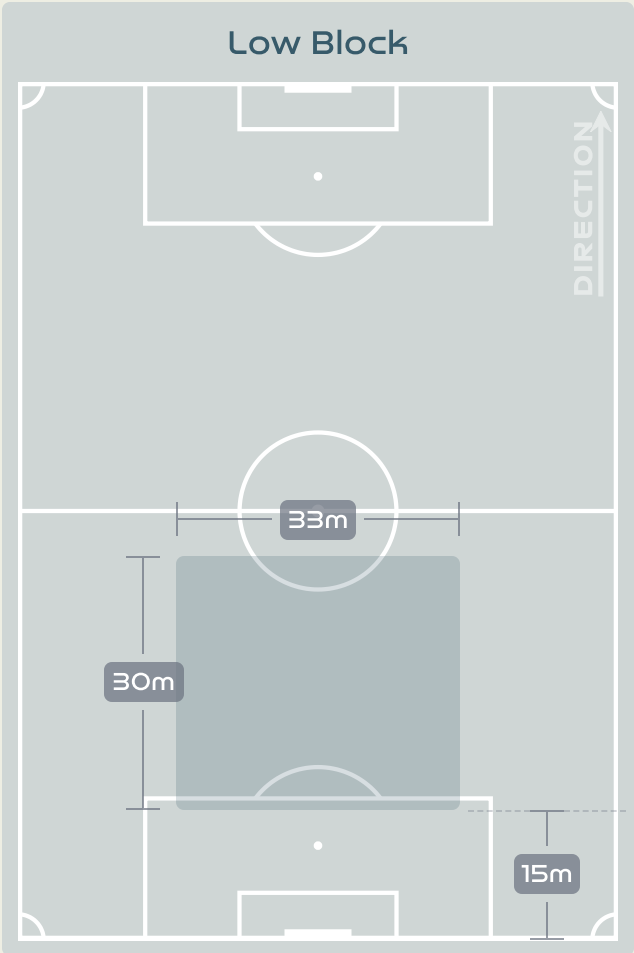
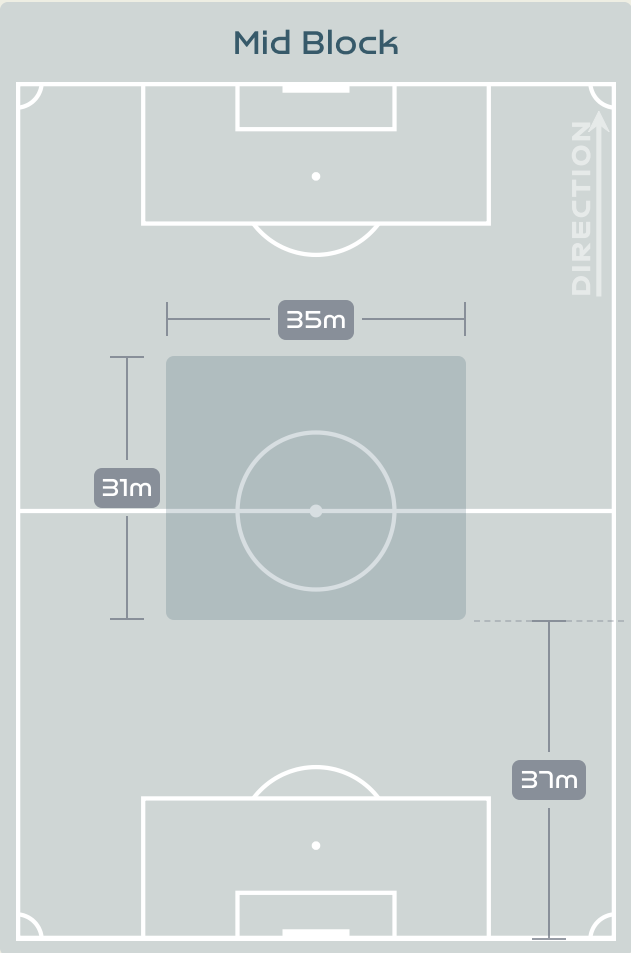
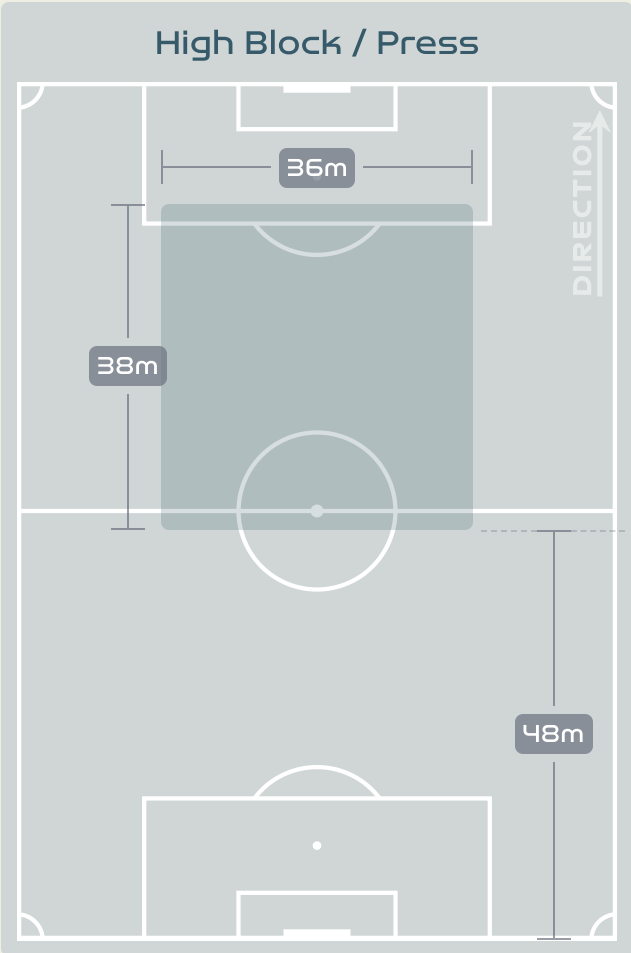
| #  | Player         | Total Possession Regains |
|----|----------------|--------------------------|
| 1  | YOON Younggeul | 6                        |
| 2  | CHOO Hyojoo    | 8                        |
| 4  | SHIM Seoyeon   | 7                        |
| 6  | LIM Seonjoo    | 9                        |
| 7  | SON Hwayeon    | 2                        |
| 8  | CHO Sohyun     | 8                        |
| 9  | LEE Geummin    | 3                        |
| 10 | JI Soyun       | 7                        |
| 11 | CHOE Yuri      | 3                        |
| 16 | JANG Selgi     | 3                        |
| 20 | KIM Hyeri      | 6                        |
| 12 | MOON Mira      | 0                        |
| 13 | PARK Eunsun    | 1                        |
| 19 | PHAIR Casey    | 0                        |
| 23 | KANG Chaerim   | 2                        |

# Defensive Line Height & Team Length

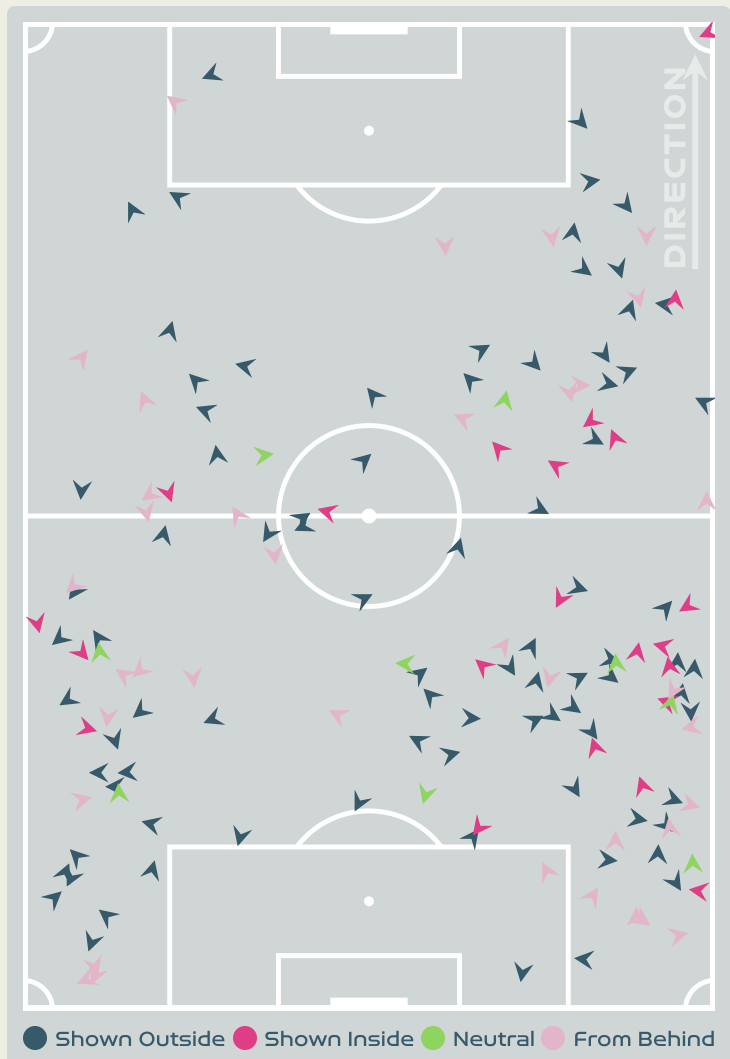


# Defensive Line Height & Team Length

Korea Republic



# Defensive Pressure



|       |                            |       |
|-------|----------------------------|-------|
| 153   | Total Pressures            | 314   |
| 48    | Direct Pressures           | 107   |
| 1.49s | Avg Pressure Duration      | 1.56s |
| 75    | Forced Turnovers           | 85    |
| 7.01s | Ball Recovery Time         | 9.1s  |
| 44    | Pushing on into Pressing   | 102   |
| 107   | Pushing on                 | 231   |
| 22    | Pressing Direction Inside  | 57    |
| 85    | Pressing Direction Outside | 143   |

**Most Direct Pressures**

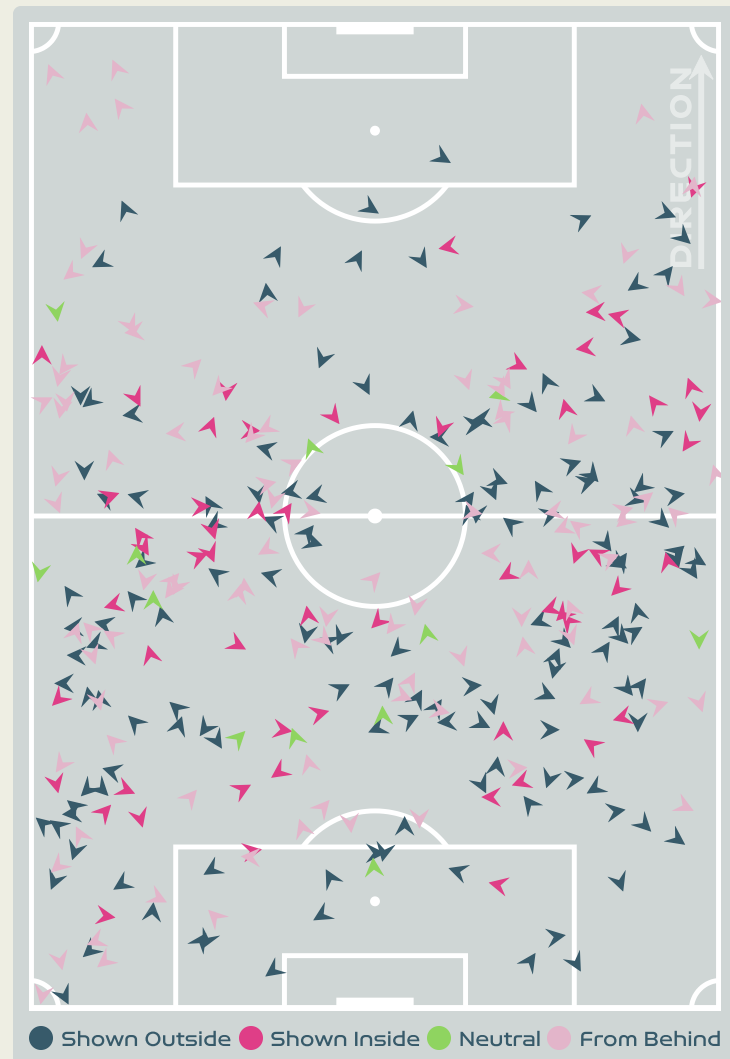
**8**

**VANEGAS Manuela**  
LEFT BACK

**Most Direct Pressures**

**17**

**CHOO Hyojoo**  
RIGHT MIDFIELD





# GOALKEEPING



Colombia v Korea Republic

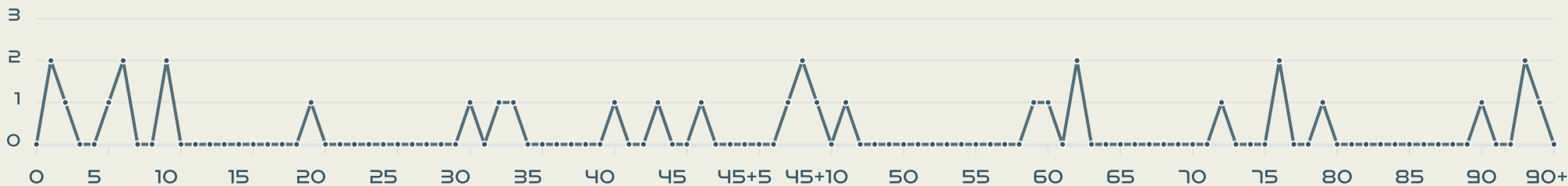


# Goalkeeping Involvement



## Colombia

### Colombia GK Involvement Timeline



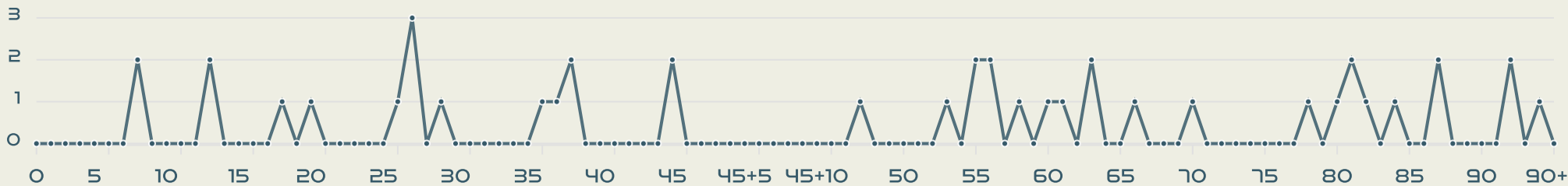
32

Total Involvements



## Korea Republic

### Korea Republic GK Involvement Timeline

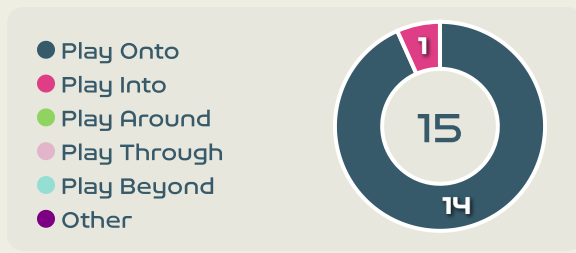
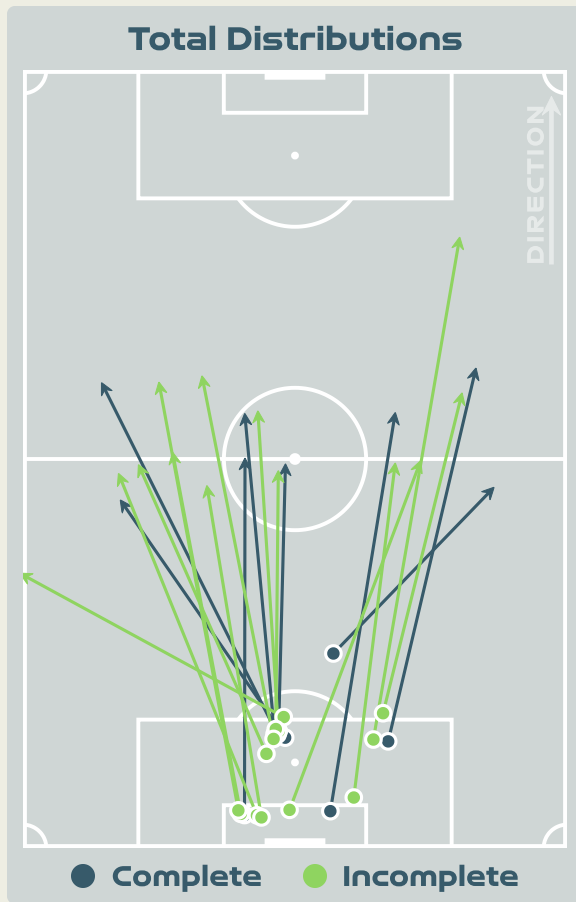
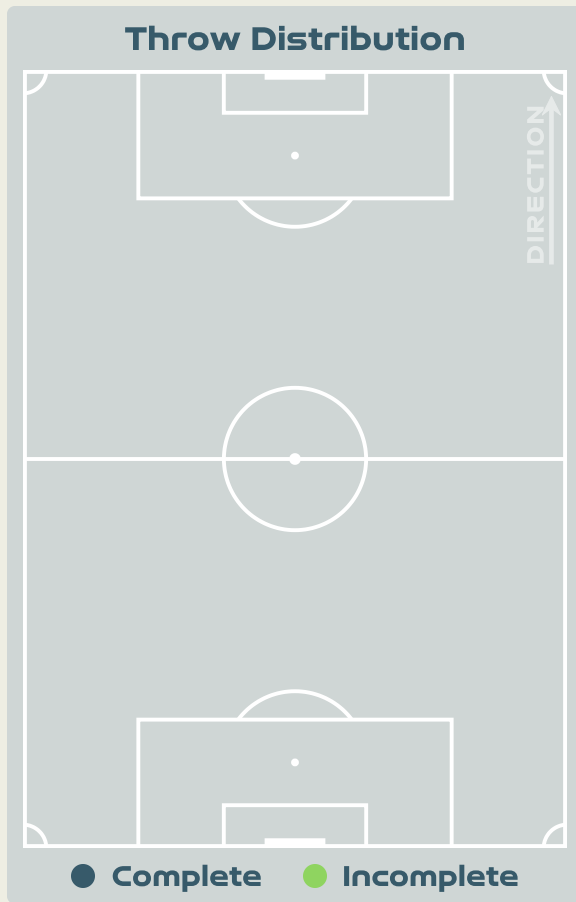
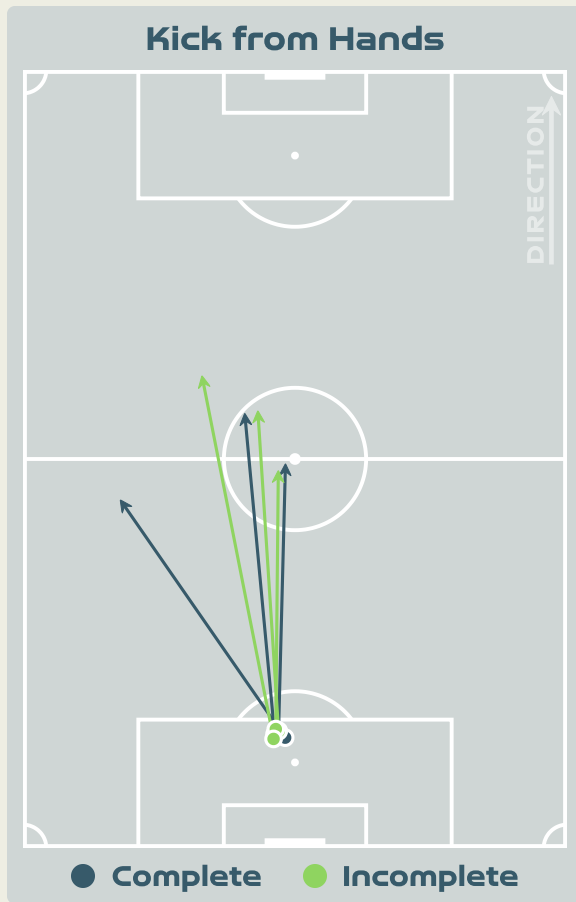
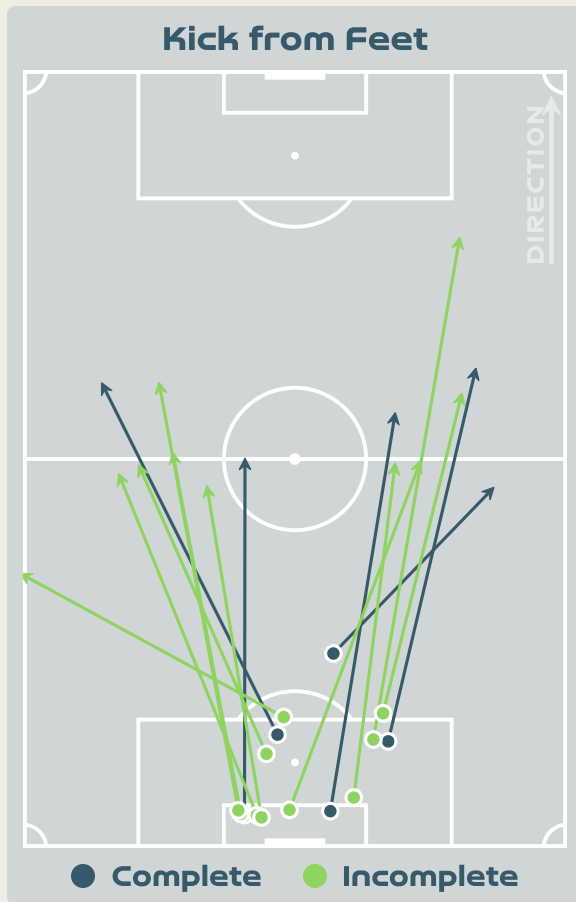


41

Total Involvements



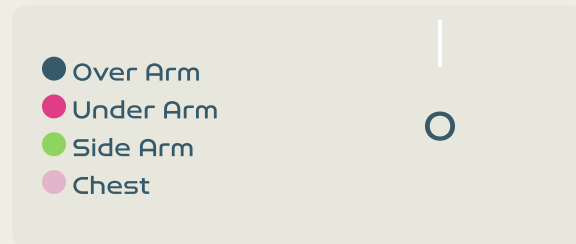
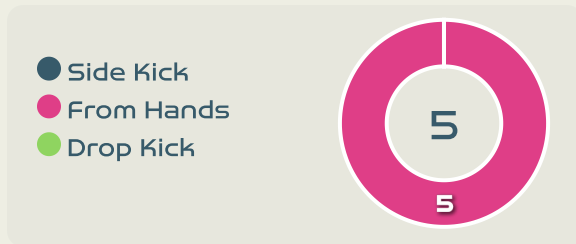
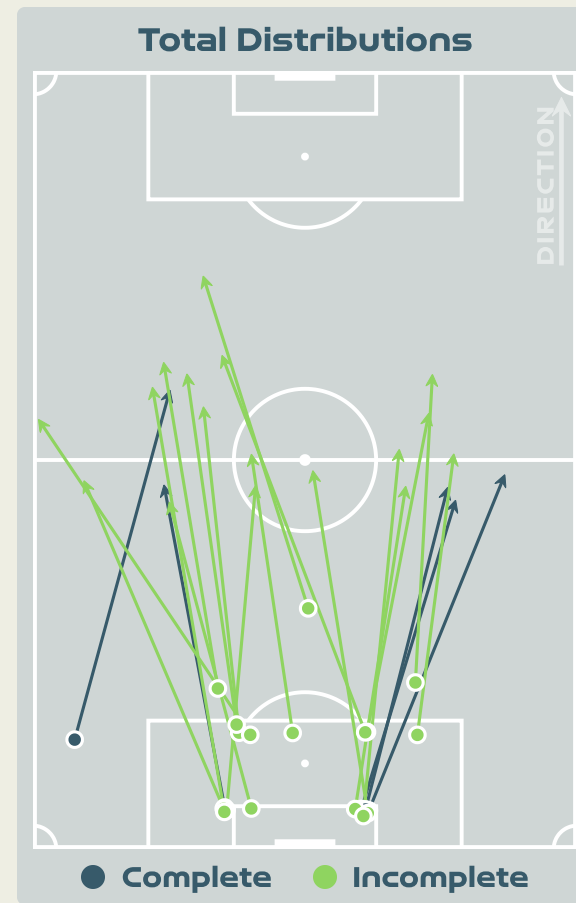
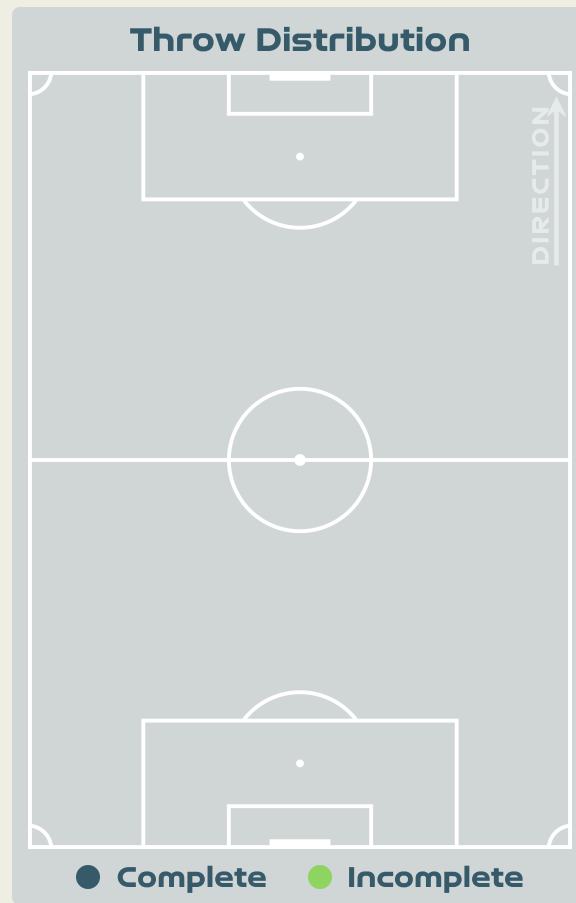
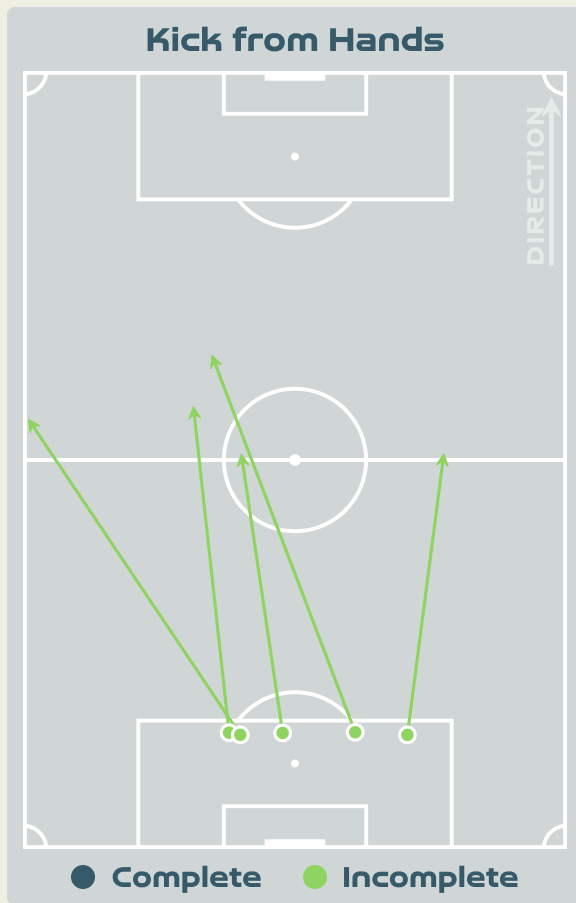
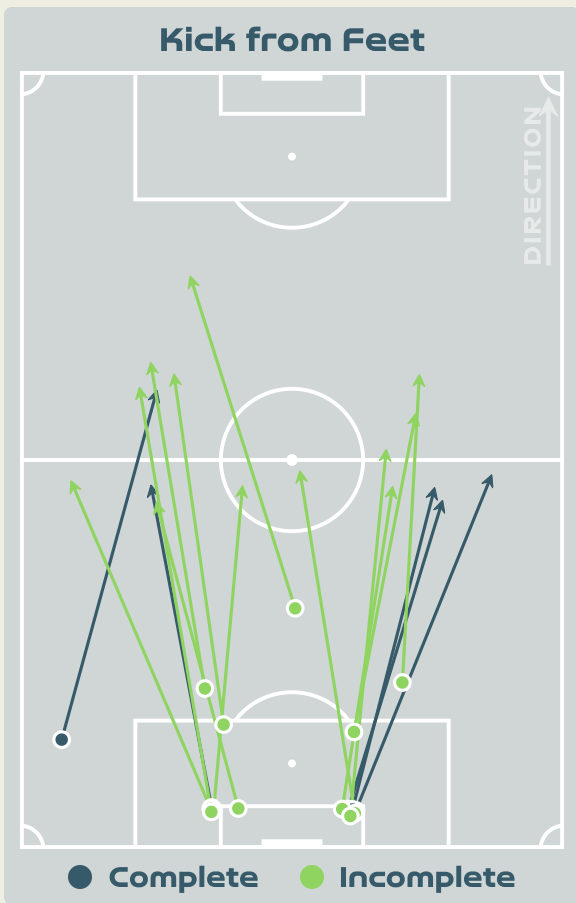
# Goalkeeping Distribution





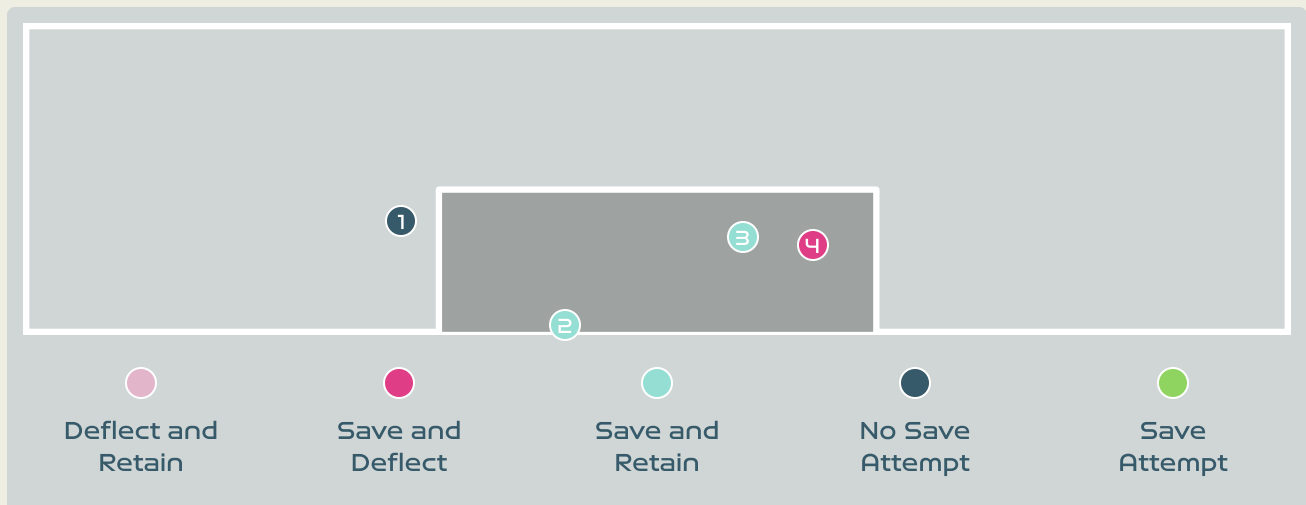
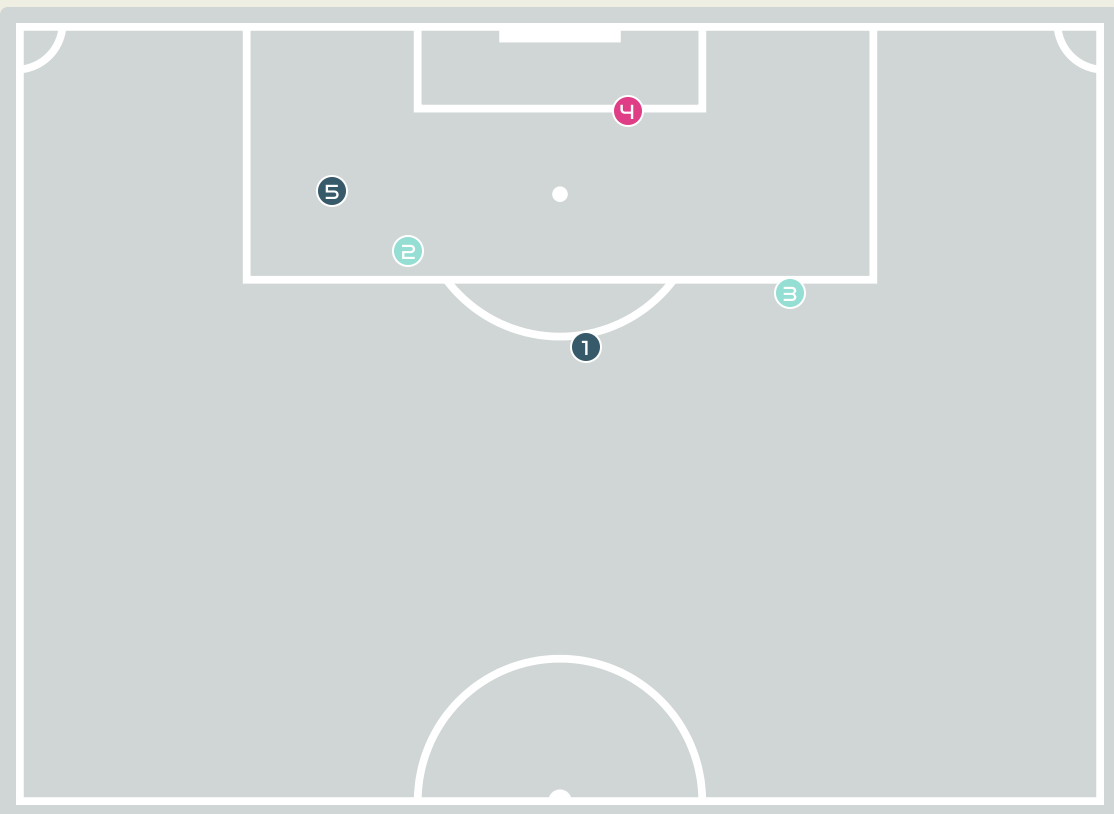
# Goalkeeping Distribution

Korea Republic



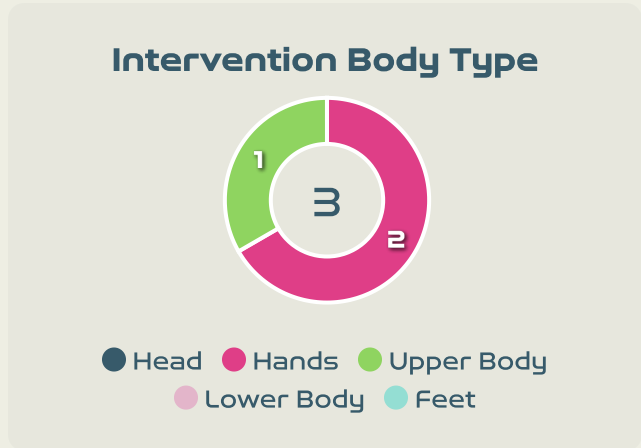
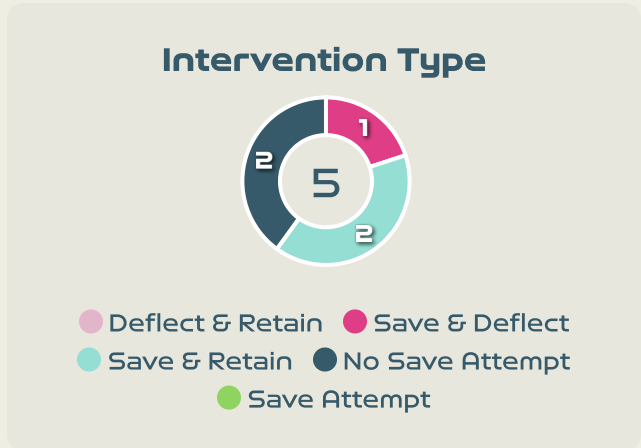


# Goal Prevention



**5**  
Total Attempts on Goal Faced

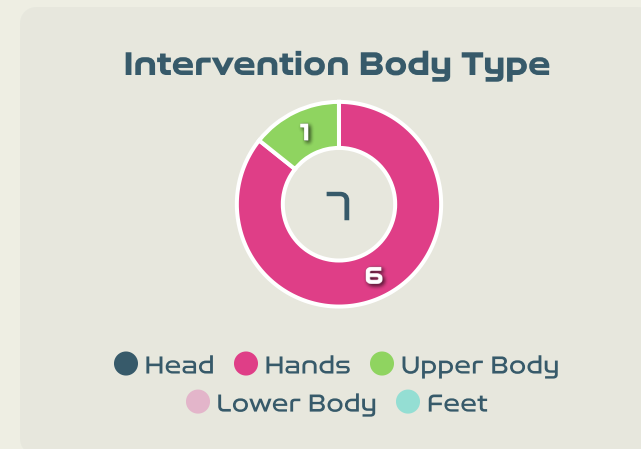
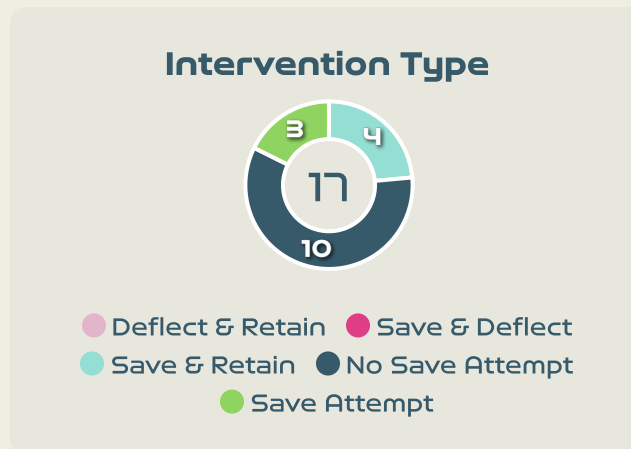
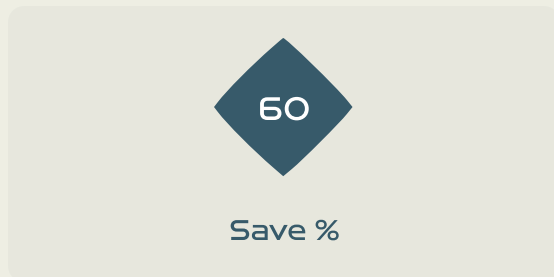
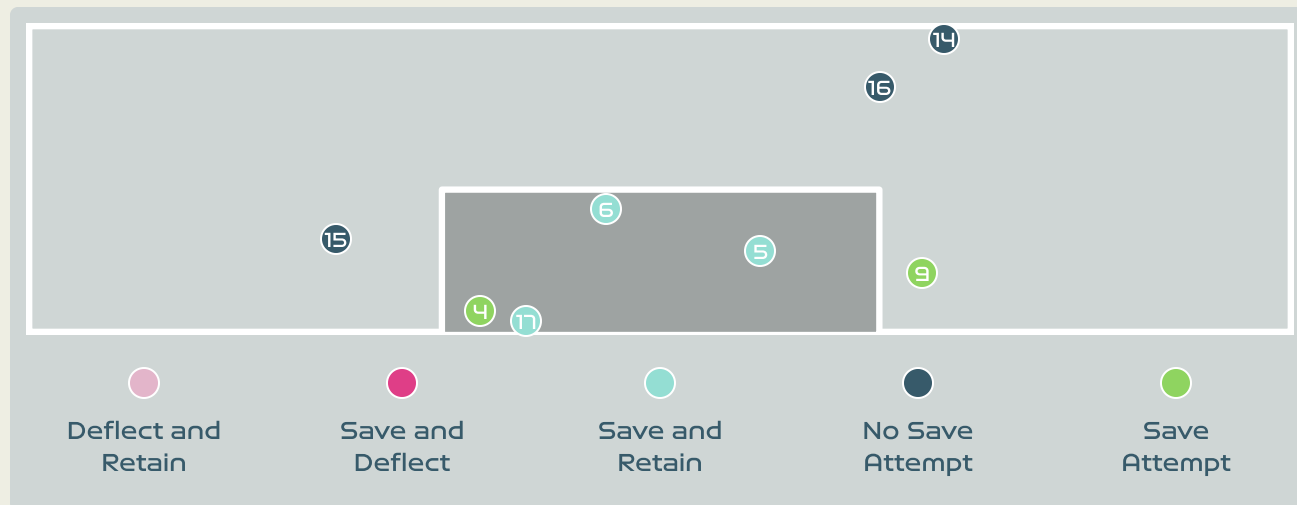
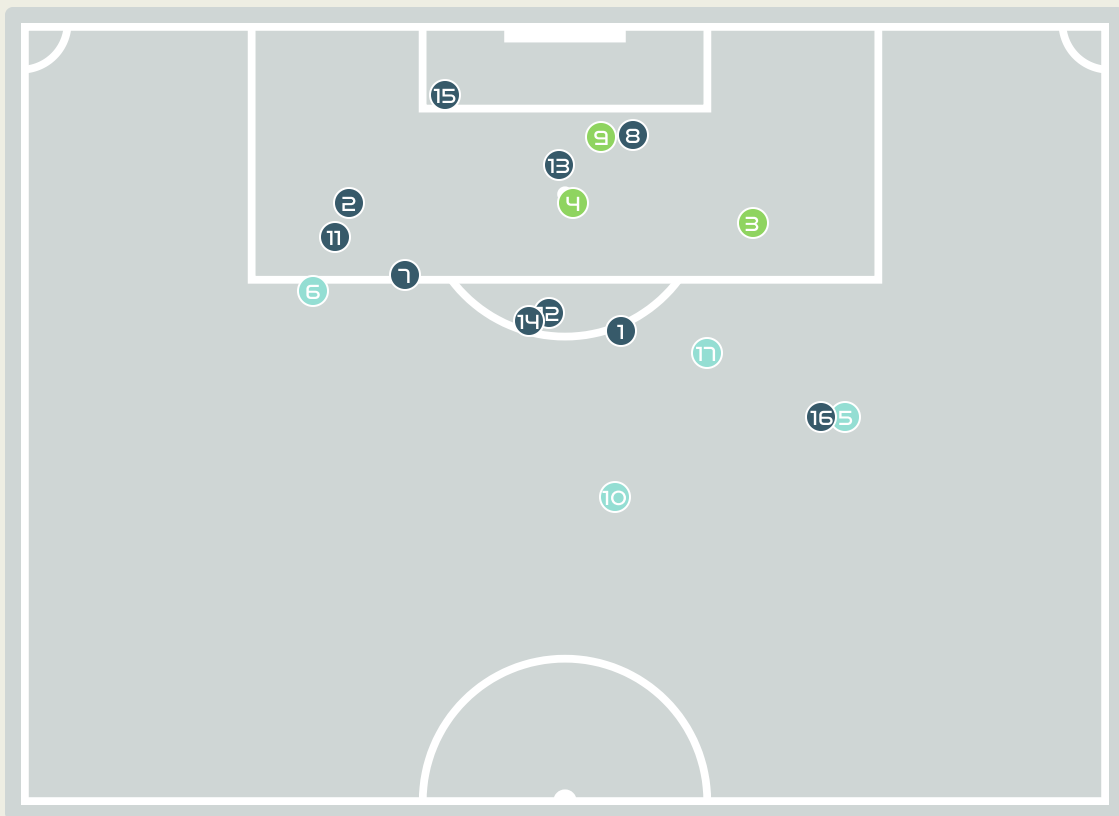
**100**  
Save %



| Total Attempts on Goal Faced | Total Goal Interventions | Save & Retain | Deflect & Retain | Save & Deflect | Save Attempt | No Save Attempt |
|------------------------------|--------------------------|---------------|------------------|----------------|--------------|-----------------|
| 5                            | 3                        | 2             | 0                | 1              | 0            | 2               |

# Goal Prevention

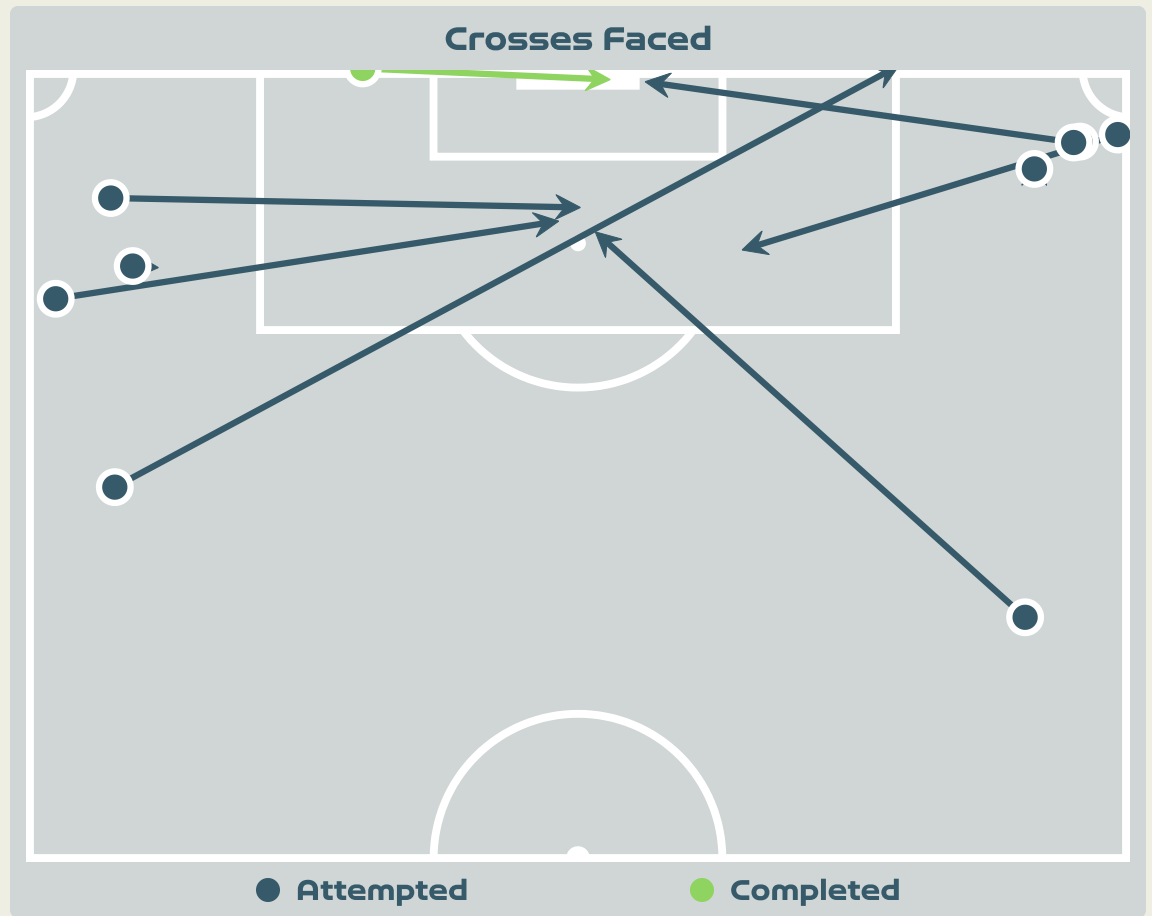
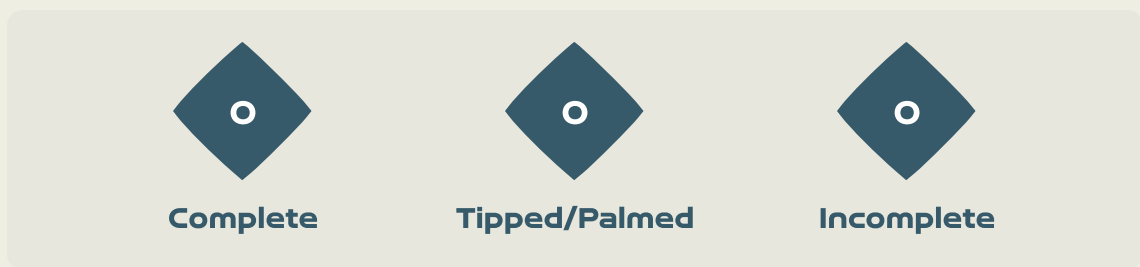
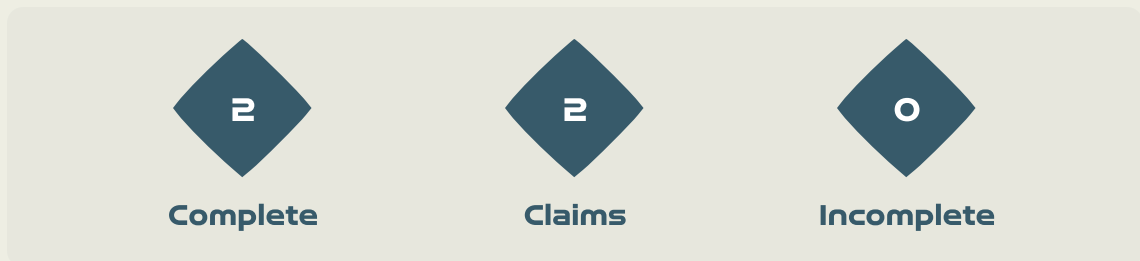
Korea Republic



| Total Attempts on Goal Faced | Total Goal Interventions | Save & Retain | Deflect & Retain | Save & Deflect | Save Attempt | No Save Attempt |
|------------------------------|--------------------------|---------------|------------------|----------------|--------------|-----------------|
| 17                           | 4                        | 4             | 0                | 0              | 3            | 10              |



# Aerial Control

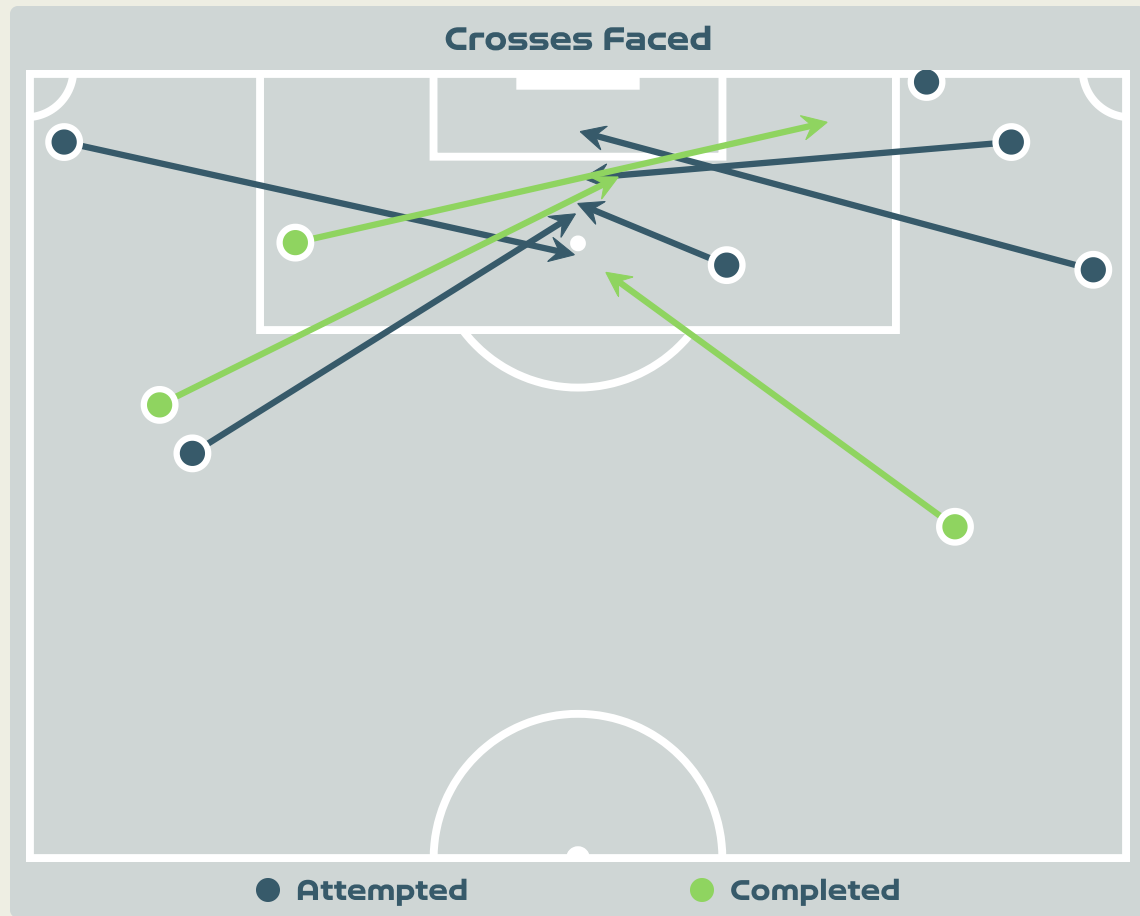
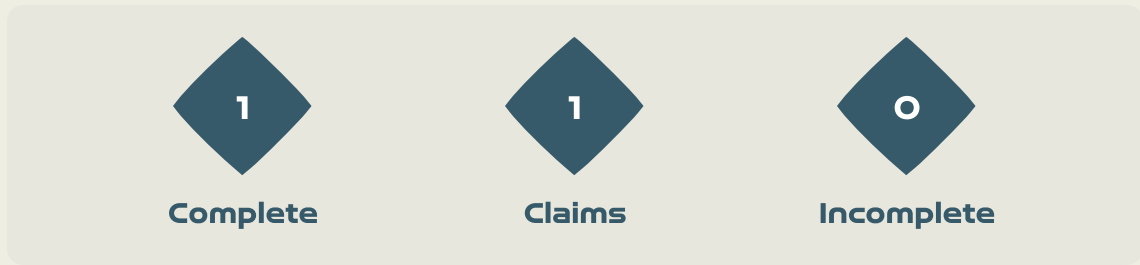


**Delivery Types Faced**

| Total | In Swing | Out Swing | Driven | Lofted | Cutback | Push |
|-------|----------|-----------|--------|--------|---------|------|
| 13    | 1        | 2         | 0      | 8      | 1       | 1    |

# Aerial Control

Korea Republic



**Delivery Types Faced**

| Total | In Swing | Out Swing | Driven | Lofted | Cutback | Push |
|-------|----------|-----------|--------|--------|---------|------|
| 13    | 0        | 7         | 0      | 5      | 0       | 1    |



# SET PLAYS



Colombia v Korea Republic





# Set Plays - Corners

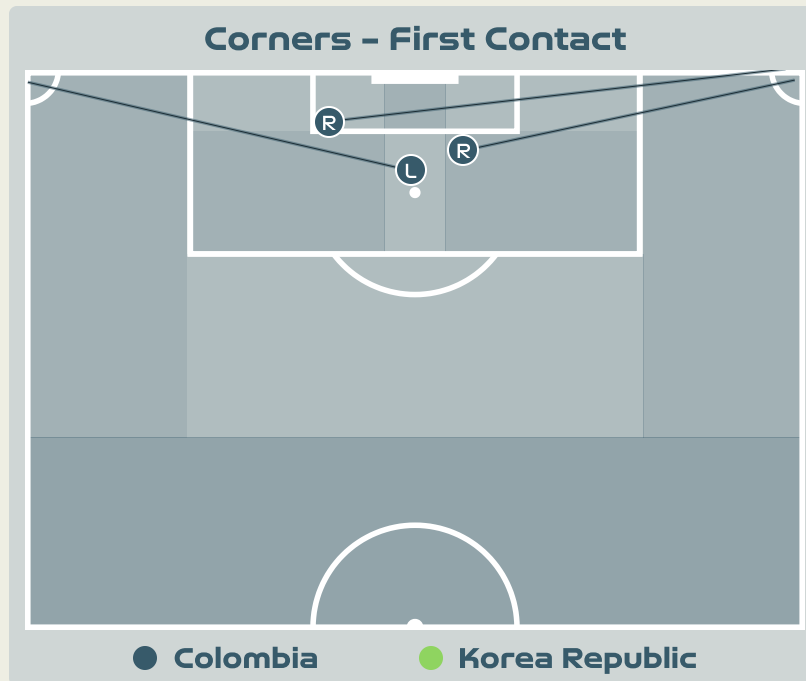
**53**  
Total Set Plays

**15**  
Total Free Kicks

**1**  
Total Penalties

**4**  
Total Corners

**33**  
Total Throw Ins



| Delivery Type        | From Left Side | From Right Side | Total |
|----------------------|----------------|-----------------|-------|
| Direct to Area       | 1              | 3               | 4     |
| Short                | 0              | 0               | 0     |
| Edge of Penalty Area | 0              | 0               | 0     |

| Delivery Style | Total |
|----------------|-------|
| Inswing        | 0     |
| Outswing       | 2     |
| Driven         | 0     |

| Free Kicks          |       |
|---------------------|-------|
| Type                | Total |
| Direct              | 15    |
| Direct (on target)  | 1     |
| Direct (off target) | 0     |
| Indirect            | 0     |

**First Contacts on Colombia Crosses**

**3** By Colombia

**0** By Korea Republic

| Top 5 Player First Contacts |          |       |
|-----------------------------|----------|-------|
| Player                      | Team     | Total |
| VANEGAS Manuela             | Colombia | 1     |
| RAMIREZ Mayra               | Colombia | 1     |
| CARABALI Jorelyn            | Colombia | 1     |

# Set Plays - Corners

50

Total Set Plays

13

Total Free Kicks

0

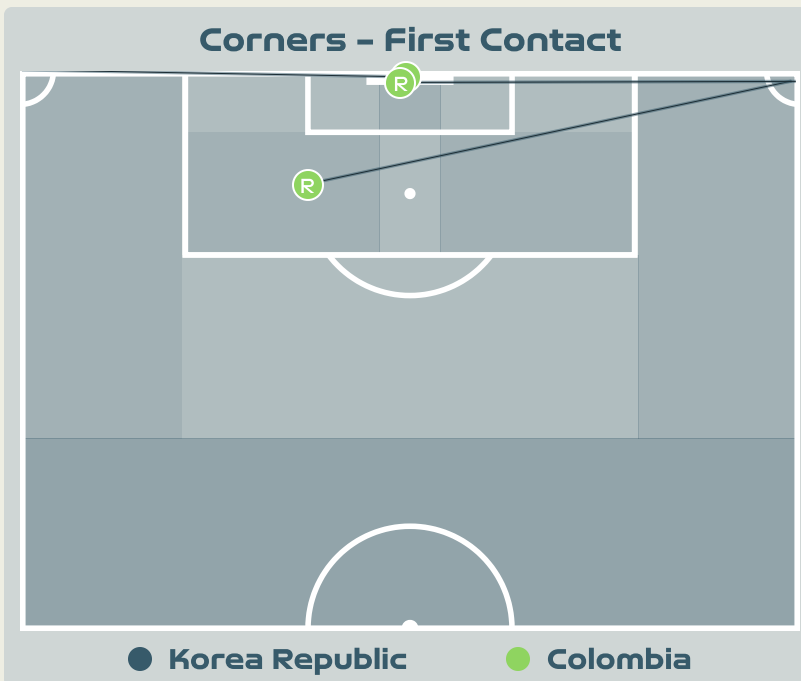
Total Penalties

3

Total Corners

34

Total Throw Ins



Korea Republic



| Delivery Type        | From Left Side | From Right Side | Total |
|----------------------|----------------|-----------------|-------|
| Direct to Area       | 1              | 2               | 3     |
| Short                | 0              | 0               | 0     |
| Edge of Penalty Area | 0              | 0               | 0     |

| Delivery Style | Total |
|----------------|-------|
| Inswing        | 1     |
| Outswing       | 1     |
| Driven         | 0     |

| Free Kicks          |       |
|---------------------|-------|
| Type                | Total |
| Direct              | 10    |
| Direct (on target)  | 1     |
| Direct (off target) | 0     |
| Indirect            | 3     |

## First Contacts on Korea Republic Crosses

0

By Korea Republic

3

By Colombia

| Top 5 Player First Contacts |          |       |
|-----------------------------|----------|-------|
| Player                      | Team     | Total |
| PEREZ Catalina              | Colombia | 2     |
| CARABALI Jorelyn            | Colombia | 1     |





# INDIVIDUAL DATA IN POSSESSION



Colombia v Korea Republic



## In Possession - Distributions



| #  | Player                | Passes Attempted | Passes Completed | Pass Completion % | Switches of Play | Crosses Attempted | Crosses Completed | Line Breaks Attempted | Line Breaks Completed | Line Break Completion % | Ball Progressions | Take Ons | Step Ins | Attempts at Goal | Goals |
|----|-----------------------|------------------|------------------|-------------------|------------------|-------------------|-------------------|-----------------------|-----------------------|-------------------------|-------------------|----------|----------|------------------|-------|
| 1  | PEREZ Catalina        | 21               | 8                | 38%               | 0                | 0                 | 0                 | 19                    | 7                     | 36%                     | 0                 | 0        | 0        | 0                | 0     |
| 2  | VANEGAS Manuela       | 48               | 35               | 73%               | 0                | 1                 | 0                 | 24                    | 16                    | 66%                     | 4                 | 2        | 2        | 2                | 0     |
| 3  | ARIAS Daniela         | 14               | 10               | 71%               | 0                | 0                 | 0                 | 4                     | 3                     | 75%                     | 0                 | 0        | 0        | 0                | 0     |
| 5  | BEDOYA DURANGO Lorena | 33               | 25               | 76%               | 1                | 1                 | 1                 | 16                    | 12                    | 75%                     | 2                 | 2        | 0        | 2                | 0     |
| 6  | MONTOYA Daniela       | 19               | 16               | 84%               | 1                | 0                 | 0                 | 7                     | 6                     | 85%                     | 0                 | 0        | 0        | 0                | 0     |
| 9  | RAMIREZ Mayra         | 31               | 23               | 74%               | 0                | 3                 | 1                 | 5                     | 3                     | 60%                     | 5                 | 2        | 3        | 3                | 0     |
| 10 | SANTOS Leicy          | 43               | 34               | 79%               | 0                | 1                 | 1                 | 12                    | 8                     | 66%                     | 0                 | 0        | 0        | 2                | 0     |
| 11 | USME Catalina         | 42               | 33               | 79%               | 0                | 5                 | 3                 | 11                    | 9                     | 81%                     | 2                 | 1        | 1        | 5                | 1     |
| 17 | ARIAS Carolina        | 52               | 38               | 73%               | 0                | 1                 | 0                 | 30                    | 25                    | 83%                     | 2                 | 2        | 0        | 0                | 0     |
| 18 | CAICEDO Linda         | 40               | 34               | 85%               | 1                | 1                 | 0                 | 11                    | 6                     | 54%                     | 6                 | 4        | 2        | 2                | 1     |
| 19 | CARABALI Jorelyn      | 14               | 7                | 50%               | 0                | 0                 | 0                 | 4                     | 1                     | 25%                     | 2                 | 2        | 0        | 1                | 0     |
| 4  | OSPINA GARCIA Diana   | 2                | 2                | 100%              | 0                | 0                 | 0                 | 1                     | 1                     | 100%                    | 0                 | 0        | 0        | 0                | 0     |
| 8  | RESTREPO Marcela      | 10               | 8                | 80%               | 1                | 0                 | 0                 | 2                     | 2                     | 100%                    | 0                 | 0        | 0        | 0                | 0     |

# In Possession - Offers & Receptions



|    |                       |              | Offer movement types |            |           |           |           |             |                 |
|----|-----------------------|--------------|----------------------|------------|-----------|-----------|-----------|-------------|-----------------|
| #  | Player                | Total Offers | In Front             | In Between | Out to In | In to Out | In Behind | No Movement | Offers Received |
| 1  | PEREZ Catalina        | 3            | 0                    | 0          | 0         | 0         | 0         | 3           | 1               |
| 2  | VANEGAS Manuela       | 33           | 11                   | 0          | 0         | 1         | 5         | 16          | 16              |
| 3  | ARIAS Daniela         | 13           | 2                    | 0          | 0         | 0         | 1         | 10          | 4               |
| 5  | BEDOYA DURANGO Lorena | 15           | 8                    | 6          | 0         | 0         | 1         | 0           | 7               |
| 6  | MONTOYA Daniela       | 32           | 14                   | 10         | 1         | 2         | 4         | 1           | 5               |
| 9  | RAMIREZ Mayra         | 70           | 1                    | 17         | 6         | 7         | 24        | 15          | 19              |
| 10 | SANTOS Leicy          | 40           | 7                    | 21         | 1         | 2         | 6         | 3           | 10              |
| 11 | USME Catalina         | 62           | 5                    | 36         | 2         | 9         | 6         | 4           | 21              |
| 17 | ARIAS Carolina        | 26           | 6                    | 4          | 3         | 0         | 6         | 7           | 13              |
| 18 | CAICEDO Linda         | 24           | 3                    | 4          | 1         | 3         | 4         | 9           | 14              |
| 19 | CARABALI Jorelyn      | 7            | 0                    | 0          | 0         | 0         | 1         | 6           | 0               |
| 4  | OSPINA GARCIA Diana   | 2            | 0                    | 0          | 0         | 0         | 1         | 1           | 1               |
| 8  | RESTREPO Marcela      | 10           | 1                    | 3          | 3         | 1         | 2         | 0           | 3               |

## In Possession - Distributions

Korea Republic



| #  | Player         | Passes Attempted | Passes Completed | Pass Completion % | Switches of Play | Crosses Attempted | Crosses Completed | Line Breaks Attempted | Line Breaks Completed | Line Break Completion % | Ball Progressions | Take Ons | Step Ins | Attempts at Goal | Goals |
|----|----------------|------------------|------------------|-------------------|------------------|-------------------|-------------------|-----------------------|-----------------------|-------------------------|-------------------|----------|----------|------------------|-------|
| 1  | YOON Younggeul | 22               | 5                | 23%               | 0                | 0                 | 0                 | 17                    | 2                     | 11%                     | 0                 | 0        | 0        | 0                | 0     |
| 2  | CHOO Hyojoo    | 10               | 8                | 80%               | 0                | 1                 | 0                 | 4                     | 2                     | 50%                     | 0                 | 0        | 0        | 0                | 0     |
| 4  | SHIM Seoyeon   | 23               | 12               | 52%               | 0                | 0                 | 0                 | 7                     | 4                     | 57%                     | 0                 | 0        | 0        | 0                | 0     |
| 6  | LIM Seonjoo    | 17               | 10               | 59%               | 0                | 0                 | 0                 | 8                     | 3                     | 37%                     | 0                 | 0        | 0        | 0                | 0     |
| 7  | SON Hwayeon    | 7                | 6                | 86%               | 0                | 1                 | 0                 | 1                     | 1                     | 100%                    | 0                 | 0        | 0        | 0                | 0     |
| 8  | CHO Sohyun     | 13               | 10               | 77%               | 0                | 2                 | 0                 | 3                     | 2                     | 66%                     | 0                 | 0        | 0        | 1                | 0     |
| 9  | LEE Geummin    | 26               | 18               | 69%               | 1                | 1                 | 0                 | 6                     | 4                     | 66%                     | 5                 | 4        | 1        | 1                | 0     |
| 10 | JI Soyun       | 40               | 32               | 80%               | 0                | 2                 | 0                 | 15                    | 11                    | 73%                     | 5                 | 1        | 4        | 1                | 0     |
| 11 | CHOE Yuri      | 20               | 12               | 60%               | 0                | 1                 | 1                 | 4                     | 3                     | 75%                     | 0                 | 0        | 0        | 2                | 0     |
| 16 | JANG Selgi     | 37               | 24               | 65%               | 0                | 0                 | 0                 | 16                    | 7                     | 43%                     | 1                 | 0        | 1        | 0                | 0     |
| 20 | KIM Hyeri      | 34               | 22               | 65%               | 0                | 4                 | 0                 | 20                    | 12                    | 60%                     | 2                 | 0        | 2        | 0                | 0     |
| 12 | MOON Mira      | 1                | 1                | 100%              | 0                | 0                 | 0                 | 1                     | 1                     | 100%                    | 0                 | 0        | 0        | 0                | 0     |
| 13 | PARK Eunsun    | 2                | 0                | 0%                | 0                | 0                 | 0                 | 1                     | 0                     | 0%                      | 0                 | 0        | 0        | 0                | 0     |
| 19 | PHAIR Casey    | 2                | 0                | 0%                | 0                | 0                 | 0                 | 0                     | 0                     | 0%                      | 1                 | 0        | 1        | 0                | 0     |
| 23 | KANG Chaerim   | 3                | 1                | 33%               | 0                | 1                 | 0                 | 1                     | 0                     | 0%                      | 2                 | 0        | 2        | 0                | 0     |

# In Possession - Offers & Receptions

## Korea Republic



|    |                |              | Offer movement types |            |           |           |           |             |                 |
|----|----------------|--------------|----------------------|------------|-----------|-----------|-----------|-------------|-----------------|
| #  | Player         | Total Offers | In Front             | In Between | Out to In | In to Out | In Behind | No Movement | Offers Received |
| 1  | YOON Younggeul | 3            | 0                    | 0          | 0         | 0         | 0         | 3           | 1               |
| 2  | CHOO Hyojoo    | 30           | 7                    | 4          | 2         | 0         | 5         | 12          | 7               |
| 4  | SHIM Seoyeon   | 3            | 0                    | 0          | 0         | 0         | 0         | 3           | 2               |
| 6  | LIM Seonjoo    | 8            | 0                    | 2          | 0         | 0         | 0         | 6           | 2               |
| 7  | SON Hwayeon    | 19           | 1                    | 5          | 0         | 0         | 12        | 1           | 6               |
| 8  | CHO Sohyun     | 37           | 10                   | 11         | 2         | 3         | 7         | 4           | 8               |
| 9  | LEE Geummin    | 67           | 9                    | 18         | 3         | 8         | 20        | 9           | 15              |
| 10 | JI Soyun       | 28           | 7                    | 12         | 0         | 2         | 0         | 7           | 12              |
| 11 | CHOE Yuri      | 14           | 3                    | 2          | 1         | 0         | 8         | 0           | 5               |
| 16 | JANG Selgi     | 26           | 10                   | 2          | 1         | 1         | 2         | 10          | 11              |
| 20 | KIM Hyeri      | 16           | 3                    | 1          | 0         | 0         | 4         | 8           | 4               |
| 12 | MOON Mira      | 1            | 0                    | 0          | 0         | 0         | 1         | 0           | 0               |
| 13 | PARK Eunsun    | 19           | 0                    | 11         | 1         | 1         | 5         | 1           | 2               |
| 19 | PHAIR Casey    | 0            | 0                    | 0          | 0         | 0         | 0         | 0           | 0               |
| 23 | KANG Chaerim   | 5            | 0                    | 1          | 0         | 0         | 3         | 1           | 1               |



# INDIVIDUAL DATA OUT OF POSSESSION



Colombia v Korea Republic



## Out of Possession



| #  | Player                | Tackles Made / Won | Blocks | Interceptions | Pressing Direct | Pressing Indirect | Duels Won - Aerial | Duels Won - Physical | Possession Contests won | Clearances | Loose Ball Receptions | Pushing On | Pushing On into Pressing | Possession Regains | Possession Interrupted |
|----|-----------------------|--------------------|--------|---------------|-----------------|-------------------|--------------------|----------------------|-------------------------|------------|-----------------------|------------|--------------------------|--------------------|------------------------|
| 1  | PEREZ Catalina        | 0 / 0              | 0      | 0             | 0               | 0                 | 0                  | 0                    | 0                       | 0          | 1                     | 0          | 0                        | 9                  | 0                      |
| 2  | VANEGAS Manuela       | 4 / 2              | 4      | 0             | 8               | 5                 | 5                  | 0                    | 5                       | 5          | 13                    | 9          | 4                        | 7                  | 4                      |
| 3  | ARIAS Daniela         | 3 / 0              | 1      | 1             | 3               | 0                 | 5                  | 1                    | 6                       | 3          | 6                     | 8          | 2                        | 4                  | 6                      |
| 5  | BEDOYA DURANGO Lorena | 8 / 2              | 1      | 1             | 5               | 13                | 5                  | 0                    | 8                       | 1          | 9                     | 11         | 5                        | 8                  | 4                      |
| 6  | MONTOYA Daniela       | 3 / 1              | 3      | 0             | 4               | 21                | 0                  | 0                    | 0                       | 2          | 7                     | 21         | 6                        | 4                  | 3                      |
| 9  | RAMIREZ Mayra         | 1 / 1              | 2      | 0             | 3               | 16                | 2                  | 0                    | 3                       | 1          | 12                    | 16         | 10                       | 2                  | 2                      |
| 10 | SANTOS Leicy          | 4 / 2              | 2      | 0             | 2               | 22                | 1                  | 0                    | 4                       | 1          | 8                     | 8          | 5                        | 6                  | 2                      |
| 11 | USME Catalina         | 2 / 0              | 2      | 1             | 5               | 12                | 1                  | 0                    | 2                       | 2          | 8                     | 12         | 4                        | 4                  | 2                      |
| 17 | ARIAS Carolina        | 3 / 1              | 3      | 1             | 7               | 4                 | 2                  | 0                    | 2                       | 7          | 7                     | 15         | 5                        | 4                  | 4                      |
| 18 | CAICEDO Linda         | 4 / 2              | 0      | 0             | 6               | 3                 | 0                  | 0                    | 1                       | 0          | 9                     | 1          | 0                        | 3                  | 1                      |
| 19 | CARABALI Jorelyn      | 2 / 0              | 2      | 1             | 4               | 3                 | 6                  | 0                    | 6                       | 9          | 6                     | 4          | 1                        | 9                  | 6                      |
| 4  | OSPINA GARCIA Diana   | 1 / 1              | 0      | 0             | 1               | 0                 | 1                  | 0                    | 1                       | 1          | 0                     | 0          | 0                        | 1                  | 0                      |
| 8  | RESTREPO Marcela      | 0 / 0              | 0      | 0             | 0               | 6                 | 1                  | 0                    | 1                       | 0          | 2                     | 2          | 2                        | 0                  | 0                      |

## Out of Possession

Korea Republic



| #  | Player         | Tackles Made / Won | Blocks | Interceptions | Pressing Direct | Pressing Indirect | Duels Won - Aerial | Duels Won - Physical | Possession Contests won | Clearances | Loose Ball Receptions | Pushing On | Pushing On into Pressing | Possession Regains | Possession Interrupted |
|----|----------------|--------------------|--------|---------------|-----------------|-------------------|--------------------|----------------------|-------------------------|------------|-----------------------|------------|--------------------------|--------------------|------------------------|
| 1  | YOON Younggeul | 0 / 0              | 0      | 0             | 0               | 0                 | 0                  | 0                    | 0                       | 1          | 2                     | 0          | 0                        | 6                  | 1                      |
| 2  | CHOO Hyojoo    | 12 / 1             | 2      | 1             | 17              | 22                | 3                  | 0                    | 3                       | 0          | 2                     | 36         | 13                       | 8                  | 4                      |
| 4  | SHIM Seoyeon   | 3 / 0              | 6      | 2             | 5               | 8                 | 0                  | 0                    | 0                       | 13         | 7                     | 7          | 2                        | 7                  | 11                     |
| 6  | LIM Seonjoo    | 5 / 1              | 3      | 0             | 9               | 11                | 3                  | 1                    | 4                       | 5          | 4                     | 21         | 6                        | 9                  | 3                      |
| 7  | SON Hwayeon    | 9 / 1              | 1      | 0             | 12              | 16                | 3                  | 1                    | 4                       | 1          | 1                     | 10         | 5                        | 2                  | 2                      |
| 8  | CHO Sohyun     | 5 / 2              | 3      | 2             | 6               | 36                | 5                  | 0                    | 6                       | 3          | 4                     | 36         | 14                       | 8                  | 5                      |
| 9  | LEE Geummin    | 6 / 0              | 3      | 0             | 8               | 33                | 3                  | 0                    | 3                       | 0          | 11                    | 34         | 20                       | 3                  | 4                      |
| 10 | JI Soyun       | 11 / 4             | 1      | 0             | 12              | 25                | 2                  | 0                    | 3                       | 1          | 11                    | 15         | 8                        | 7                  | 3                      |
| 11 | CHOE Yuri      | 7 / 1              | 1      | 1             | 11              | 12                | 7                  | 0                    | 9                       | 1          | 4                     | 17         | 7                        | 3                  | 1                      |
| 16 | JANG Selgi     | 8 / 1              | 1      | 0             | 14              | 20                | 2                  | 0                    | 2                       | 12         | 6                     | 19         | 11                       | 3                  | 8                      |
| 20 | KIM Hyeri      | 5 / 1              | 3      | 2             | 11              | 10                | 0                  | 0                    | 0                       | 0          | 10                    | 26         | 11                       | 6                  | 2                      |
| 12 | MOON Mira      | 0 / 0              | 0      | 0             | 0               | 1                 | 0                  | 0                    | 0                       | 1          | 1                     | 0          | 0                        | 0                  | 1                      |
| 13 | PARK Eunsun    | 0 / 0              | 0      | 1             | 0               | 3                 | 2                  | 0                    | 3                       | 0          | 0                     | 4          | 2                        | 1                  | 0                      |
| 19 | PHAIR Casey    | 0 / 0              | 1      | 0             | 0               | 3                 | 2                  | 0                    | 2                       | 1          | 0                     | 5          | 2                        | 0                  | 1                      |
| 23 | KANG Chaerim   | 2 / 2              | 0      | 0             | 2               | 7                 | 1                  | 0                    | 1                       | 0          | 1                     | 1          | 1                        | 2                  | 0                      |





# INDIVIDUAL DATA PHYSICAL



Colombia v Korea Republic



## Physical Data



| #  | Player                | Total Distance (m) | Zone 1: 0-7 km/h (m) | Zone 2: 7-13km/h (m) | Zone 3: 13-19km/h (m) | Zone 4: 19-23km/h (m) | Zone 5: 23+ km/h (m) | High Speed Runs (Zone 4) | Sprints (Zone 5) | Top Speed (km/h) |
|----|-----------------------|--------------------|----------------------|----------------------|-----------------------|-----------------------|----------------------|--------------------------|------------------|------------------|
| 1  | PEREZ Catalina        | 3878.2             | 3117.3               | 600.7                | 153.6                 | 6.2                   | 0                    | 21.0                     | 1.0              | 23.1             |
| 2  | VANEGAS Manuela       | 9329.2             | 3893.1               | 2777.3               | 1918.1                | 609.2                 | 132.5                | 155.0                    | 45.0             | 30.7             |
| 3  | ARIAS Daniela         | 9226.4             | 4058.7               | 2934.9               | 1765.9                | 351.5                 | 115.3                | 134.0                    | 26.0             | 32.4             |
| 5  | BEDOYA DURANGO Lorena | 8843.2             | 3749.5               | 2991.7               | 1789.0                | 236.1                 | 76.9                 | 132.0                    | 23.0             | 29.4             |
| 6  | MONTOYA Daniela       | 10233.3            | 3903.0               | 3189.7               | 2678.0                | 390.9                 | 70.6                 | 188.0                    | 29.0             | 28.2             |
| 9  | RAMIREZ Mayra         | 8855.8             | 4374.8               | 2498.2               | 1170.7                | 464.9                 | 347.1                | 113.0                    | 48.0             | 31.1             |
| 10 | SANTOS Leicy          | 7848.7             | 3056.3               | 2408.0               | 1817.8                | 398.7                 | 168.0                | 154.0                    | 38.0             | 29.5             |
| 11 | USME Catalina         | 10363.3            | 3746.3               | 4083.1               | 2013.6                | 399.0                 | 122.3                | 169.0                    | 31.0             | 27.3             |
| 17 | ARIAS Carolina        | 8991.1             | 3992.0               | 2551.7               | 1746.1                | 477.4                 | 223.9                | 142.0                    | 33.0             | 29.3             |
| 18 | CAICEDO Linda         | 8432.4             | 4143.7               | 2241.3               | 1430.1                | 344.9                 | 272.4                | 129.0                    | 36.0             | 29.2             |
| 19 | CARABALI Jorelyn      | 9117.5             | 4069.1               | 3105.4               | 1453.3                | 366.5                 | 123.1                | 126.0                    | 28.0             | 30.4             |
| 4  | OSPINA GARCIA Diana   | 765.0              | 271.0                | 332.3                | 100.0                 | 42.5                  | 19.0                 | 9.0                      | 4.0              | 26.9             |
| 8  | RESTREPO Marcela      | 2258.4             | 723.8                | 772.4                | 644.5                 | 99.6                  | 18.1                 | 43.0                     | 7.0              | 28.5             |

## Physical Data

Korea Republic



| #  | Player         | Total Distance (m) | Zone 1: 0-7 km/h (m) | Zone 2: 7-13km/h (m) | Zone 3: 13-19km/h (m) | Zone 4: 19-23km/h (m) | Zone 5: 23+ km/h (m) | High Speed Runs (Zone 4) | Sprints (Zone 5) | Top Speed (km/h) |
|----|----------------|--------------------|----------------------|----------------------|-----------------------|-----------------------|----------------------|--------------------------|------------------|------------------|
| 1  | YOON Younggeul | 4039.8             | 3132.0               | 692.0                | 206.8                 | 8.9                   | 0                    | 30.0                     | 1.0              | 21.0             |
| 2  | CHOO Hyojoo    | 9086.6             | 3250.3               | 2929.5               | 2149.9                | 509.8                 | 247.2                | 187.0                    | 46.0             | 31.3             |
| 4  | SHIM Seoyeon   | 8448.1             | 3305.7               | 3486.5               | 1437.0                | 149.5                 | 69.3                 | 117.0                    | 16.0             | 27.9             |
| 6  | LIM Seonjoo    | 8551.1             | 3105.8               | 3315.3               | 1592.2                | 312.1                 | 226.6                | 142.0                    | 33.0             | 29.3             |
| 7  | SON Hwayeon    | 7727.0             | 2860.5               | 2256.3               | 1710.0                | 574.1                 | 326.1                | 140.0                    | 50.0             | 31.7             |
| 8  | CHO Sohyun     | 7878.7             | 2748.1               | 2284.8               | 2213.9                | 421.5                 | 210.4                | 170.0                    | 40.0             | 28.6             |
| 9  | LEE Geummin    | 10987.7            | 3791.9               | 3639.1               | 2829.3                | 650.5                 | 75.8                 | 208.0                    | 56.0             | 28.2             |
| 10 | JI Soyun       | 9794.8             | 3961.0               | 3052.1               | 2373.3                | 319.3                 | 90.1                 | 163.0                    | 28.0             | 30.2             |
| 11 | CHOE Yuri      | 8007.1             | 2668.8               | 2693.6               | 1900.1                | 432.4                 | 313.1                | 149.0                    | 44.0             | 31.4             |
| 16 | JANG Selgi     | 8993.5             | 3378.9               | 3093.8               | 1965.1                | 394.8                 | 160.1                | 163.0                    | 34.0             | 28.9             |
| 20 | KIM Hyeri      | 9286.4             | 3846.4               | 2902.9               | 1841.5                | 437.4                 | 258.2                | 144.0                    | 42.0             | 30.3             |
| 12 | MOON Mira      | 776.1              | 305.5                | 239.2                | 194.9                 | 36.5                  | 0                    | 16.0                     | 3.0              | 24.1             |
| 13 | PARK Eunsun    | 2230.9             | 1052.5               | 665.0                | 410.9                 | 70.7                  | 31.7                 | 39.0                     | 8.0              | 26.9             |
| 19 | PHAIR Casey    | 1672.3             | 681.5                | 494.3                | 346.0                 | 58.4                  | 92.1                 | 26.0                     | 8.0              | 28.0             |
| 23 | KANG Chaerim   | 2945.5             | 937.8                | 851.8                | 866.3                 | 172.3                 | 116.9                | 59.0                     | 17.0             | 30.8             |

