



Denmark 1 – 0 China PR

Group D – Match 8
22 July 2023
20:00 Kick Off
Perth Oval

POST MATCH SUMMARY REPORT

Match Summary - Teams



Denmark

1 — **0**

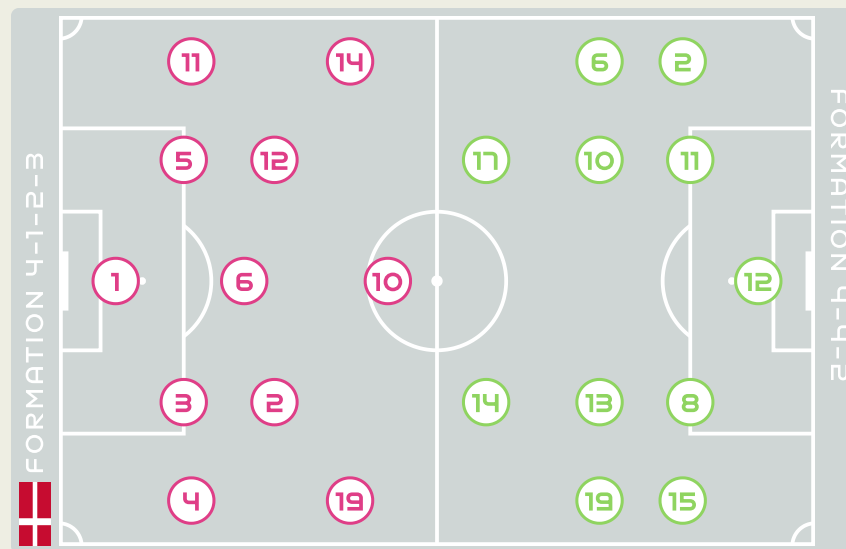
China PR

STARTING

- 1 GK CHRISTENSEN Lene
- 2 MF HASBO Josefine
- 3 DF BALLISAGER Stine
- 4 DF SEVECKE Rikke 40'
- 5 DF BOYE Simone
- 6 MF HOLMGAARD Karen
- 10 FW HARDER Pernille (C)
- 11 DF VEJE Katrine
- 12 MF KUHLM Kathrine ↓ 62'
- 14 MF SORENSEN Nicoline ↓ 72'
- 19 DF THOMSEN Janni ↓ 85'

SUBSTITUTES

- 16 GK LARSEN Kathrine
- 22 GK BAY Maja
- 7 MF TROELSGAARD Sanne
- 8 MF SNERLE Emma
- 9 FW VANGSGAARD Amalie ↑ 85' ⚽ 90'
- 13 DF THRIGE Sara
- 15 MF THOGERSEN Frederikke
- 17 FW MADSEN Rikke Marie ↑ 72'
- 18 DF GEVITZ Luna
- 20 FW BRUUN Signe ↑ 62'
- 21 FW GEJL Mille
- 23 DF SVAVA Sofie



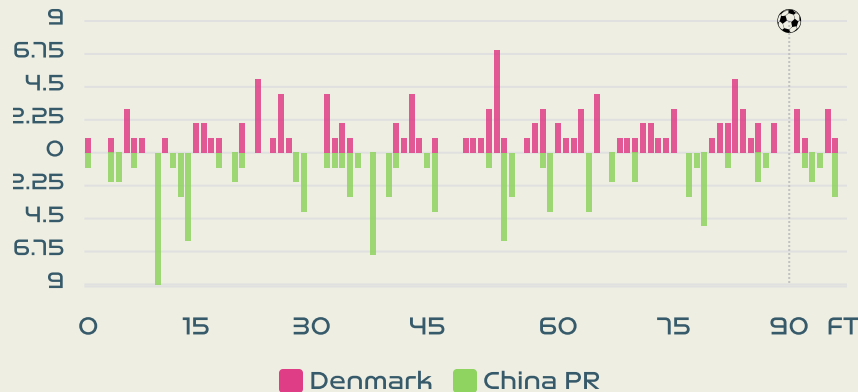
STARTING

- XU Huan GK 12
- ↓ 85' LI Mengwen DF 2
- ↓ 46' ZHANG Xin MF 6
- YAO Wei DF 8
- ZHANG Rui MF 10
- (C) WANG Shanshan FW 11
- YANG Lina MF 13
- ↓ 78' LOU Jiahui FW 14
- CHEN Qiaozhu DF 15
- ↓ 90+1' WU Chengshu MF 17
- ZHANG Linyan MF 19

SUBSTITUTES

- ZHU Yu GK 1
- PAN Hongyan GK 22
- DOU Jiaxing DF 3
- WANG Linlin DF 4
- WU Haiyan DF 5
- ↑ 46' WANG Shuang FW 7
- ↑ 78' SHEN Mengyu MF 9
- YAO Lingwei MF 16
- TANG Jiali FW 18
- XIAO Yuyi FW 20
- ↑ 90+1' GU Yasha MF 21
- ↑ 85' GAO Chen DF 23

Distribution in the Final Third



Match Summary - Key Statistics



Possession

Total	49.2%	15.1%	35.7%	Total
1	Goals			0
12 (1)	Attempts at Goal (On Target)			8 (2)
488 (385)	Total Passes (Complete)			396 (291)
79 %	Pass Completion %			73 %
61	Completed Line Breaks			75
3	Defensive Line Breaks			7
82	Receptions in the Final Third			89
18	Crosses			17
18	Ball Progressions			14
203 (58)	Defensive Pressures Applied (Direct Pressures)			220 (51)
91	Forced Turnovers			92
117	Second Balls			112
115.9 km	Total Distance Covered			113.1 km
5.8 km	Zone 4 - Low Speed Sprinting: 19-23km/h			5.5 km



Denmark

Phases of Play

China PR

IN POSSESSION



OUT OF POSSESSION





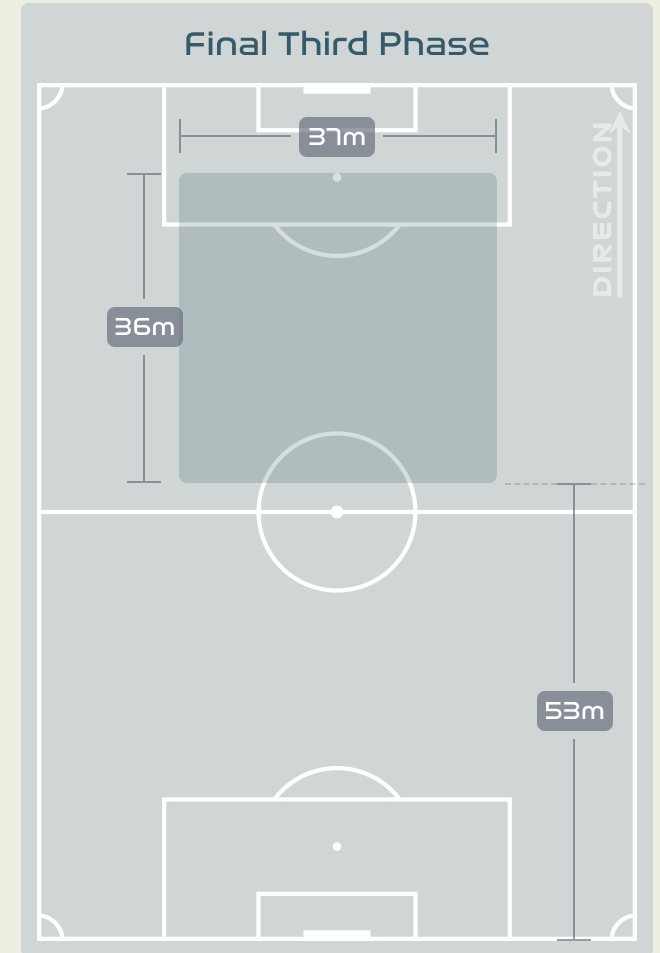
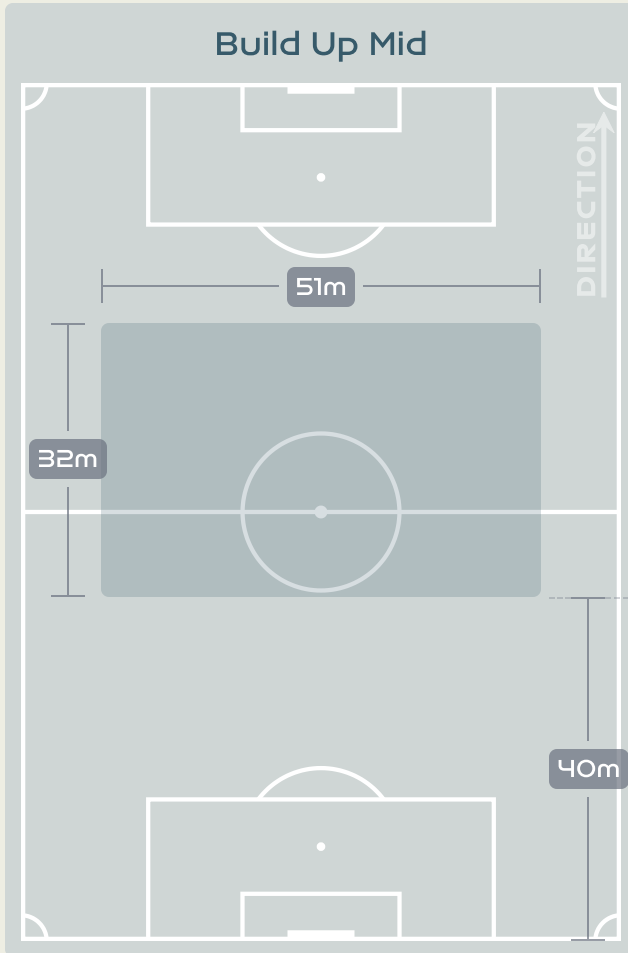
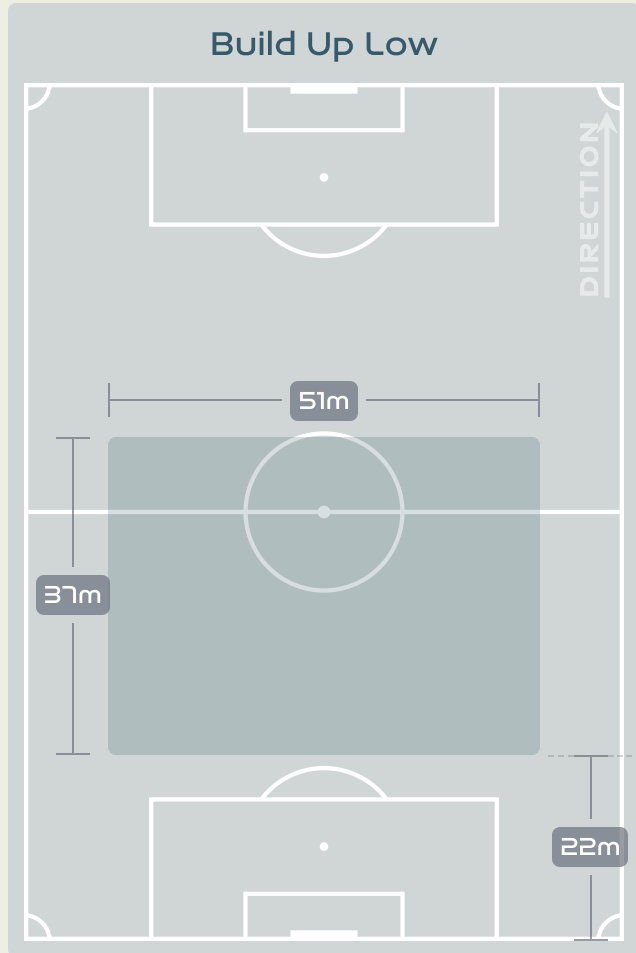
IN POSSESSION



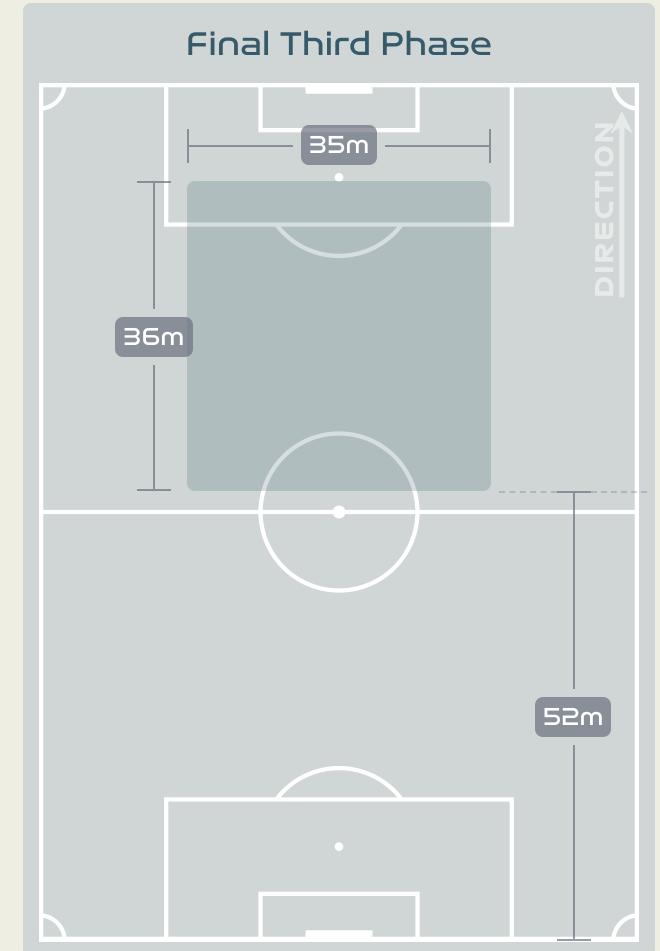
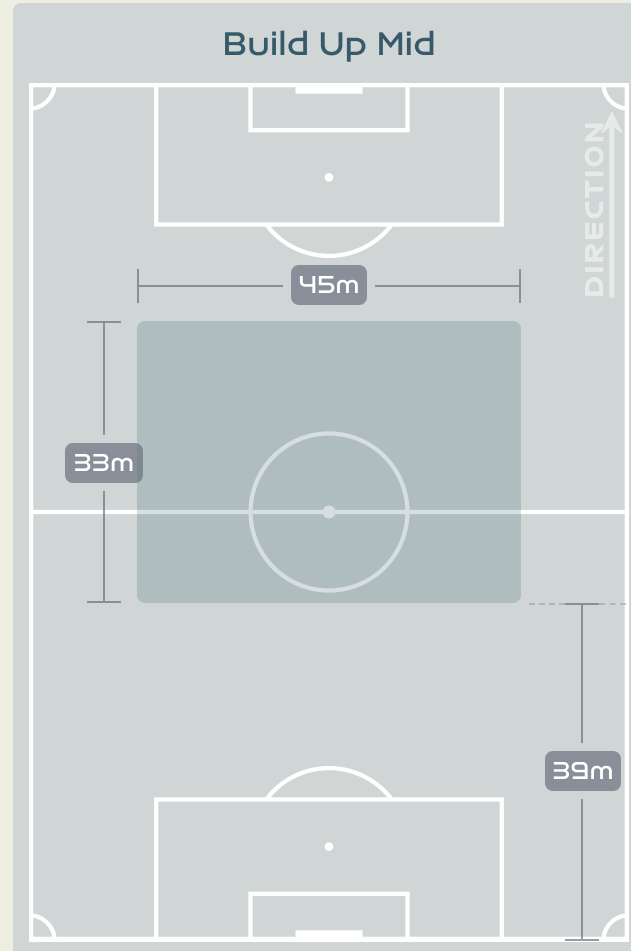
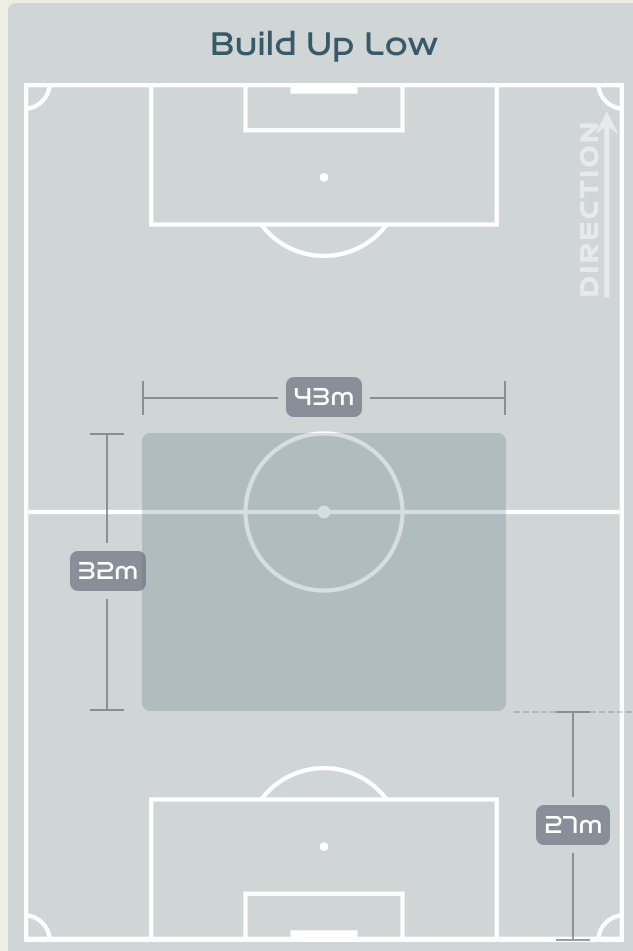
Denmark v China PR



In Possession Line Height & Team Length



In Possession Line Height & Team Length

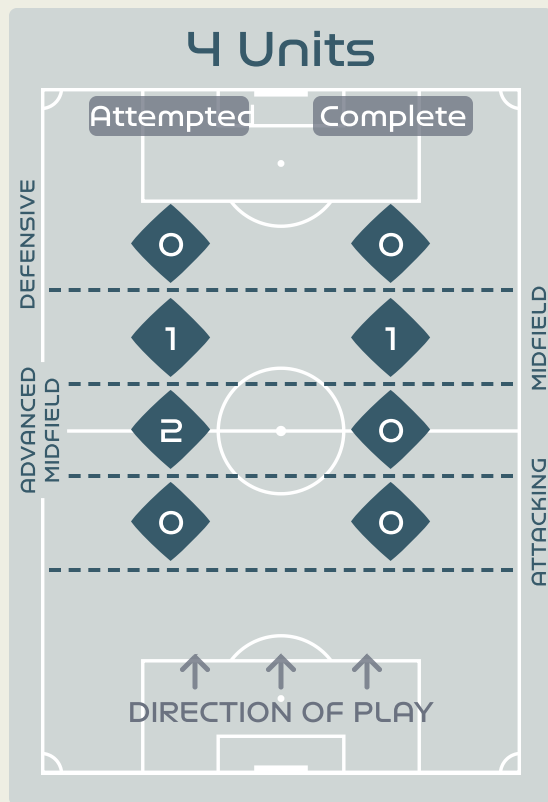
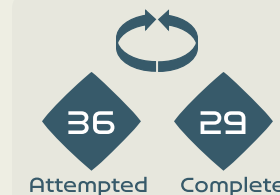
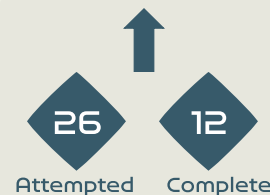


Line Breaks



Attempted Line Breaks

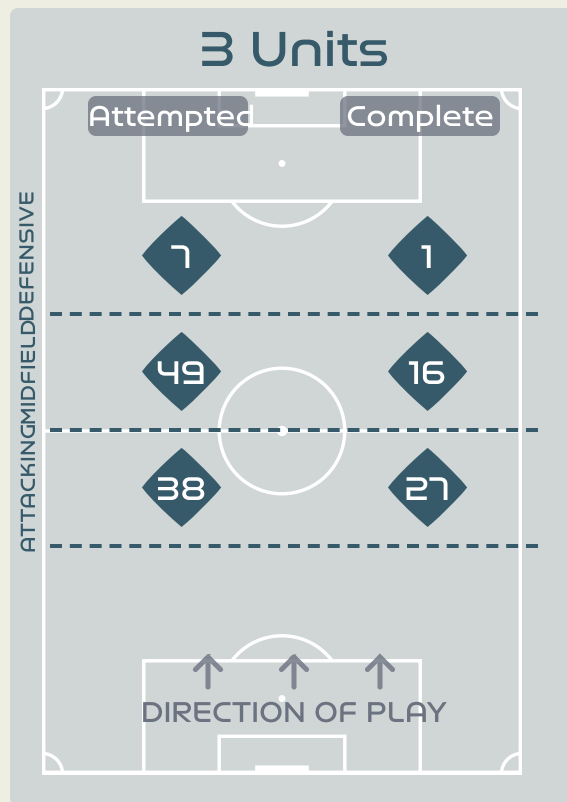
125



Attempted Line Breaks 3

Inside Shape 3

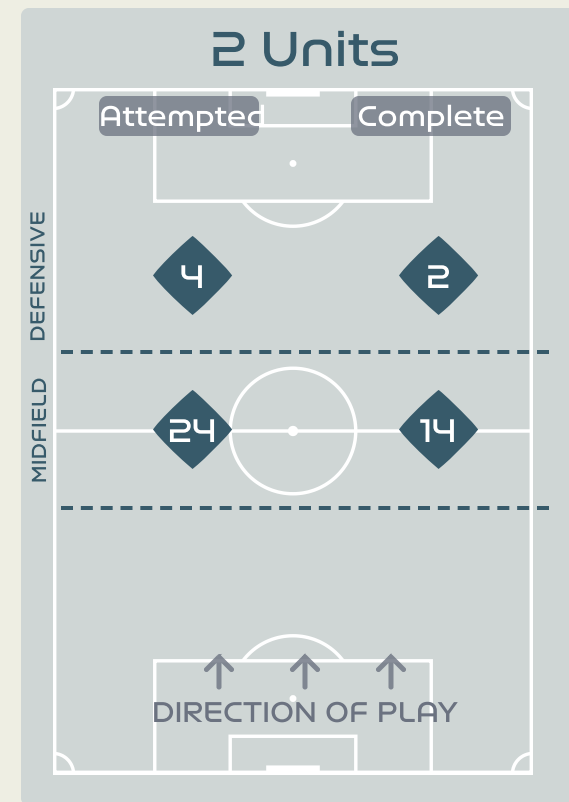
Outside Shape 0



Attempted Line Breaks 94

Inside Shape 65

Outside Shape 29



Attempted Line Breaks 28

Inside Shape 21

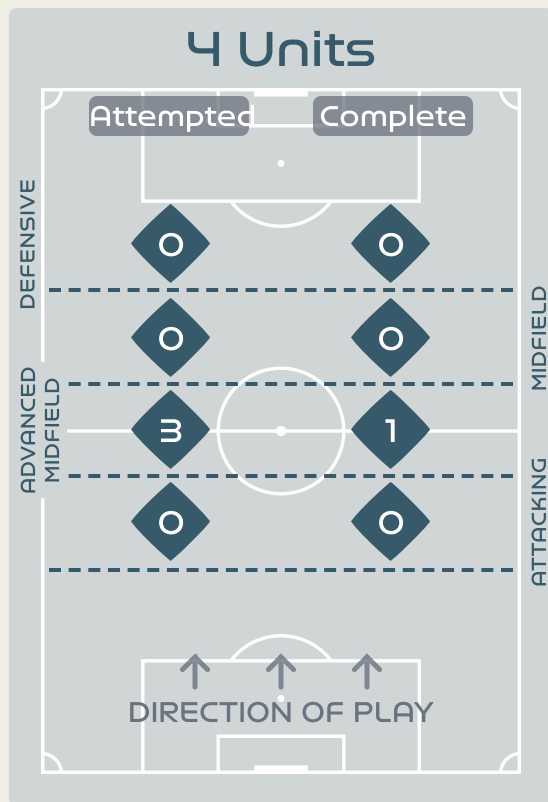
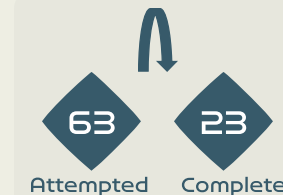
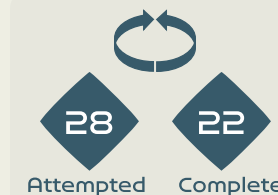
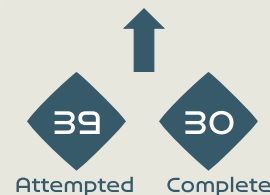
Outside Shape 7

Line Breaks

China PR

Attempted Line Breaks

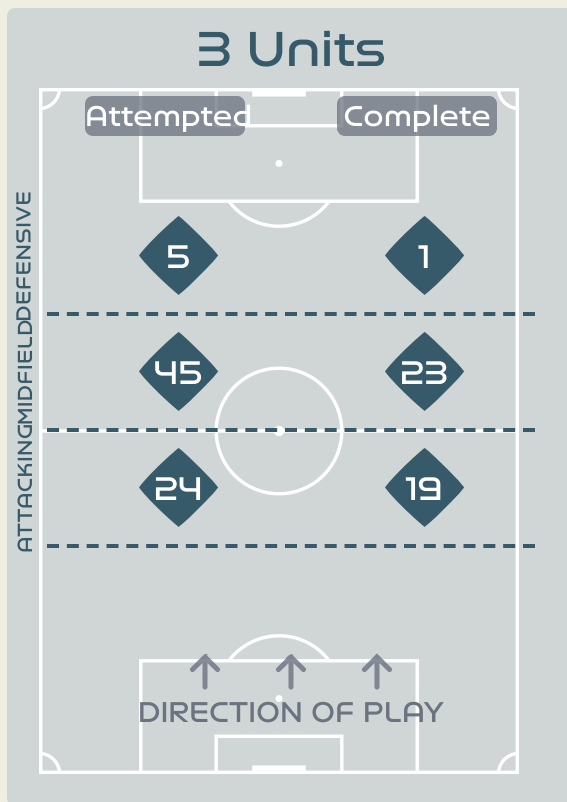
130



Attempted Line Breaks 3

Inside Shape 2

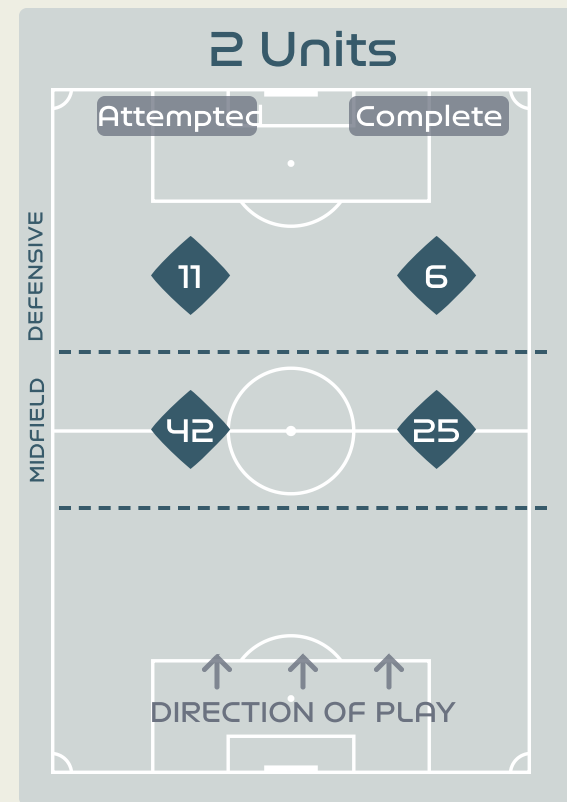
Outside Shape 1



Attempted Line Breaks 74

Inside Shape 51

Outside Shape 23



Attempted Line Breaks 53

Inside Shape 41

Outside Shape 12

Line Breaks



					4 Units				3 Units			2 Units		Direction			Distribution Type		
#	Player	Line Breaks Attempted	Line Breaks Completed	Line Break Completion %	Attacking Line	Attacking Midfield Line	Midfield Line	Defensive Line	Attacking Line	Midfield Line	Defensive Line	Midfield Line	Defensive Line	Through	Around	Over	Pass	Cross	Ball Progression
1	CHRISTENSEN Lene	5	0	0%	0	0	0	0	4	0	0	1	0	0	0	5	5	0	0
2	HASBO Josefine	8	4	50%	0	1	0	0	0	5	0	2	0	3	3	2	8	0	0
3	BALLISAGER Stine	22	13	59%	0	1	0	0	10	9	0	2	0	3	5	14	22	0	0
4	SEVECKE Rikke	21	10	47%	0	0	0	0	5	7	4	3	2	4	4	13	20	1	0
5	BOYE Simone	11	7	63%	0	0	0	0	7	4	0	0	0	1	6	4	11	0	0
6	HOLMGAARD Karen	9	4	44%	0	0	0	0	1	4	0	3	1	5	1	3	9	0	0
10	HARDER Pernille	2	1	50%	0	0	0	0	0	1	1	0	0	0	2	0	2	0	0
11	VEJE Katrine	27	11	40%	0	0	0	0	9	11	0	6	1	3	11	13	27	0	0
12	KUHL Kathrine	10	6	60%	0	0	0	0	2	2	0	6	0	4	3	3	10	0	0
14	SORENSEN Nicoline	5	1	20%	0	0	0	0	0	3	2	0	0	0	1	4	1	4	0
19	THOMSEN Janni	2	2	100%	0	0	0	0	0	2	0	0	0	1	0	1	2	0	0
9	VANGSGAARD Amalie	0	0	0%	0	0	0	0	0	0	0	0	0	0	0	0	0	0	0
17	MADSEN Rikke Marie	1	0	0%	0	0	0	0	0	0	0	1	0	1	0	0	1	0	0
20	BRUUN Signe	2	2	100%	0	0	1	0	0	1	0	0	0	1	0	1	2	0	0

Line Breaks

China PR

					4 Units				3 Units			2 Units		Direction			Distribution Type		
#	Player	Line Breaks Attempted	Line Breaks Completed	Line Break Completion %	Attacking Line	Attacking Midfield Line	Midfield Line	Defensive Line	Attacking Line	Midfield Line	Defensive Line	Midfield Line	Defensive Line	Through	Around	Over	Pass	Cross	Ball Progression
12	XU Huan	6	1	16%	0	0	0	0	3	1	0	2	0	0	0	6	6	0	0
2	LI Mengwen	13	7	53%	0	0	0	0	4	3	0	5	1	3	2	8	13	0	0
6	ZHANG Xin	3	0	0%	0	0	0	0	0	1	1	1	0	1	2	0	3	0	0
8	YAO Wei	10	5	50%	0	0	0	0	1	3	0	6	0	1	1	8	10	0	0
10	ZHANG Rui	20	13	65%	0	1	0	0	3	7	0	8	1	7	4	9	19	1	0
11	WANG Shanshan	13	7	53%	0	1	0	0	4	2	0	5	1	1	0	12	13	0	0
13	YANG Lina	12	10	83%	0	0	0	0	2	4	0	6	0	6	1	5	12	0	0
14	LOU Jiahui	4	3	75%	0	0	0	0	0	1	0	2	1	0	2	2	3	1	0
15	CHEN Qiaozhu	24	11	45%	0	0	0	0	5	10	1	5	3	4	8	12	21	2	1
17	WU Chengshu	4	3	75%	0	0	0	0	0	3	1	0	0	2	2	0	3	0	1
19	ZHANG Linyan	7	5	71%	0	0	0	0	0	3	0	1	3	4	3	0	6	0	1
7	WANG Shuang	7	5	71%	0	0	0	0	0	3	2	1	1	6	1	0	7	0	0
9	SHEN Mengyu	2	1	50%	0	0	0	0	0	2	0	0	0	1	1	0	2	0	0
21	GU Yasha	1	1	100%	0	0	0	0	0	1	0	0	0	1	0	0	1	0	0
23	GAO Chen	4	3	75%	0	1	0	0	2	1	0	0	0	2	1	1	4	0	0

Passing Networks



#	Passes From ↓ to →	CHRISTENSEN Lene	HASBO Josefine	BALLISAGER Stine	SEVECKE Rikke	BOYE Simone	HOLMGAARD Karen	HARDER Pernille	VEJE Katrine	KUHL Kathrine	SORENSEN Nicoline	THOMSEN Janni	VANGSGAARD Amalie	MADSEN Rikke Marie	BRUUN Signe
1	CHRISTENSEN Lene		0	19	1	6	2	0	1	0	0	0	0	0	0
2	HASBO Josefine	0		2	3	1	2	2	1	3	2	1	0	0	1
3	BALLISAGER Stine	4	1		17	30	5	1	1	0	3	4	0	0	2
4	SEVECKE Rikke	2	4	9		2	3	1	3	1	1	1	0	0	2
5	BOYE Simone	8	0	26	1		5	0	27	3	1	1	0	0	0
6	HOLMGAARD Karen	0	1	8	4	4		1	7	3	0	0	0	1	0
10	HARDER Pernille	0	1	0	1	0	2		0	0	2	0	0	3	1
11	VEJE Katrine	3	1	5	2	18	4	4		5	7	0	0	0	0
12	KUHL Kathrine	0	2	1	4	2	0	1	8		3	0	0	0	0
14	SORENSEN Nicoline	0	0	0	1	1	1	1	6	3		0	0	0	0
19	THOMSEN Janni	0	0	2	2	0	0	1	1	3	1		0	1	0
9	VANGSGAARD Amalie	0	1	0	0	0	1	0	0	0	0	0		0	0
17	MADSEN Rikke Marie	0	0	0	0	0	0	1	0	0	0	0	0		2
20	BRUUN Signe	0	0	0	0	0	0	3	0	0	0	1	1	0	

Top 5 Player to Player Passers

Player	Passed To	% of Total Team Passes
BALLISAGER Stine	BOYE Simone	8.4%
BOYE Simone	VEJE Katrine	7.5%
BOYE Simone	BALLISAGER Stine	7.2%
CHRISTENSEN Lene	BALLISAGER Stine	5.3%
VEJE Katrine	BOYE Simone	5%

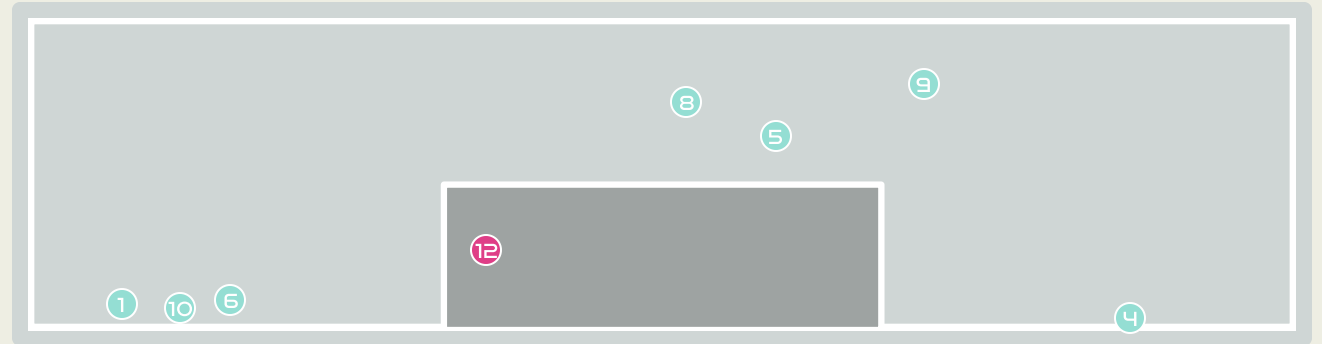
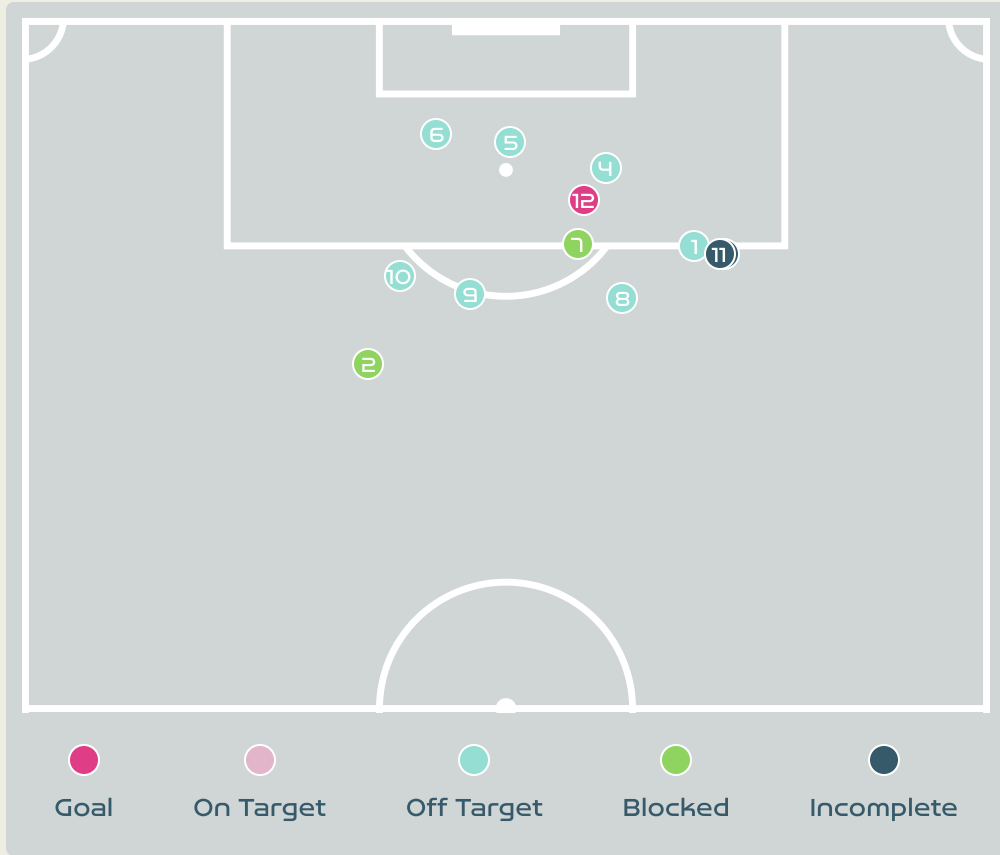
Passing Networks






China PR

#	Passes From ↓ to →	XU Huan	LI Mengwen	ZHANG Xin	YAO Wei	ZHANG Rui	WANG Shanshan	YANG Lina	LOU Jiahui	CHEN Qiaozhu	WU Chengshu	ZHANG Linyan	WANG Shuang	SHEN Mengyu	GU Yasha	GAO Chen
12	XU Huan		0	0	2	0	1	1	0	0	0	0	0	0	0	0
2	LI Mengwen	0		3	0	6	5	2	1	0	2	0	4	0	0	0
6	ZHANG Xin	0	4		1	3	4	0	2	0	0	0	0	0	0	0
8	YAO Wei	2	0	0		1	8	5	0	7	0	1	0	0	0	0
10	ZHANG Rui	0	8	6	2		6	1	2	2	3	7	1	0	0	0
11	WANG Shanshan	0	5	3	7	3		1	0	1	0	1	2	1	0	1
13	YANG Lina	0	2	0	7	5	4		2	2	2	4	3	1	0	1
14	LOU Jiahui	0	1	1	0	4	0	1		4	3	2	2	0	0	0
15	CHEN Qiaozhu	0	0	0	3	1	0	3	7		1	5	0	0	2	0
17	WU Chengshu	0	2	0	0	2	0	3	2	0		4	0	1	0	0
19	ZHANG Linyan	0	0	0	1	2	1	2	3	7	1		2	0	0	0
7	WANG Shuang	0	1	0	0	5	0	0	1	1	3	3		0	0	0
9	SHEN Mengyu	0	0	0	0	1	0	1	0	0	2	0	2		0	1
21	GU Yasha	0	0	0	0	0	0	0	0	0	0	0	0	1		0
23	GAO Chen	0	0	0	0	0	0	0	0	0	1	0	0	2	0	

Top 5 Player to Player Passers		
Player	Passed To	% of Total Team Passes
YAO Wei	WANG Shanshan	3.1%
ZHANG Rui	LI Mengwen	3.1%
YAO Wei	CHEN Qiaozhu	2.7%
ZHANG Rui	ZHANG Linyan	2.7%
WANG Shanshan	YAO Wei	2.7%

Attempts at Goal



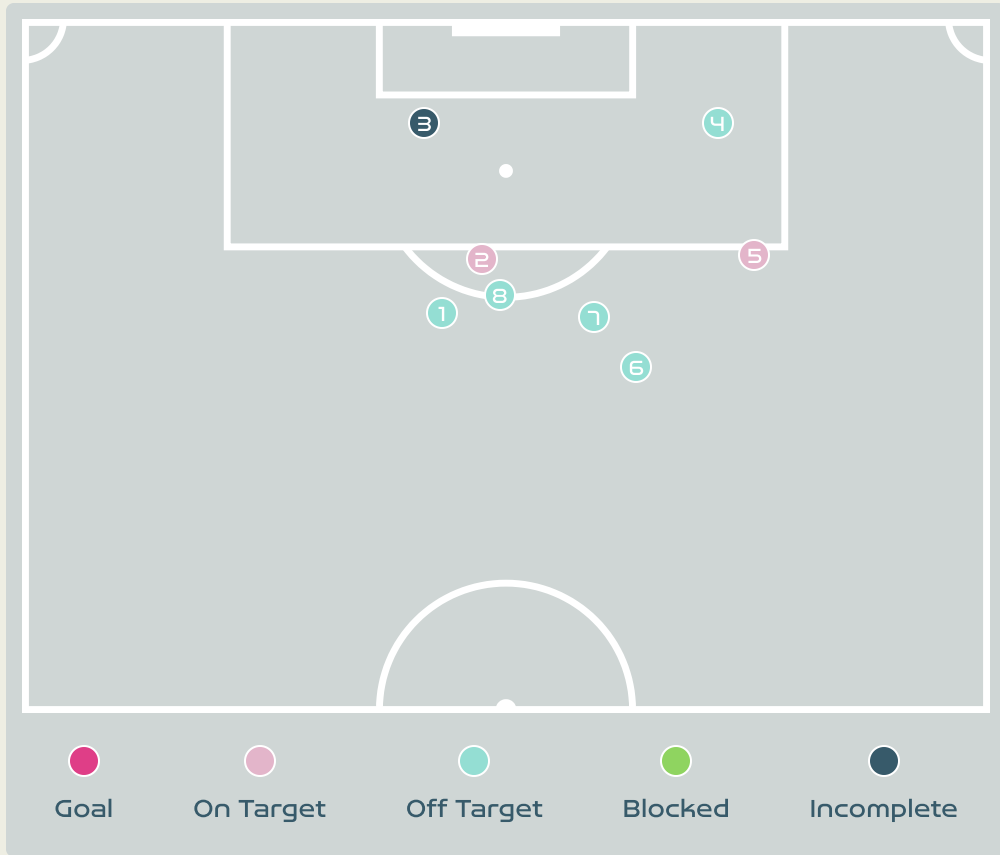
Key	Outcome	Shots
	Goals	1
	On Target	0
	Off Target	7
	Blocked	2
	Incomplete	2

Attempts at Goal



Time	Player	Outcome	Body Part	Delivery Type
19	12 KUHL Kathrine	Off Target	Right Foot	Loose Ball
23	6 HOLMGAARD Karen	Incomplete - Blocked	Right Foot	Loose Ball
23	19 THOMSEN Janni	Incomplete - Defensive Event	Right Foot	Loose Ball
48	2 HASBO Josefine	Deflected Off Target - Defensive Event	Right Foot	Loose Ball
50	2 HASBO Josefine	Off Target	Head	Loose Ball
74	5 BOYE Simone	Off Target	Head	Corner
80	10 HARDER Pernille	Incomplete - Blocked	Right Foot	Pass
80	10 HARDER Pernille	Off Target	Right Foot	Loose Ball
81	20 BRUUN Signe	Deflected Off Target - Defensive Event	Right Foot	Pass
82	17 MADSEN Rikke Marie	Off Target	Right Foot	Pass
84	9 VANGSGAARD Amalie	Incomplete	Left Foot	Loose Ball
88	9 VANGSGAARD Amalie	On Target - Goal	Head	Corner

Attempts at Goal



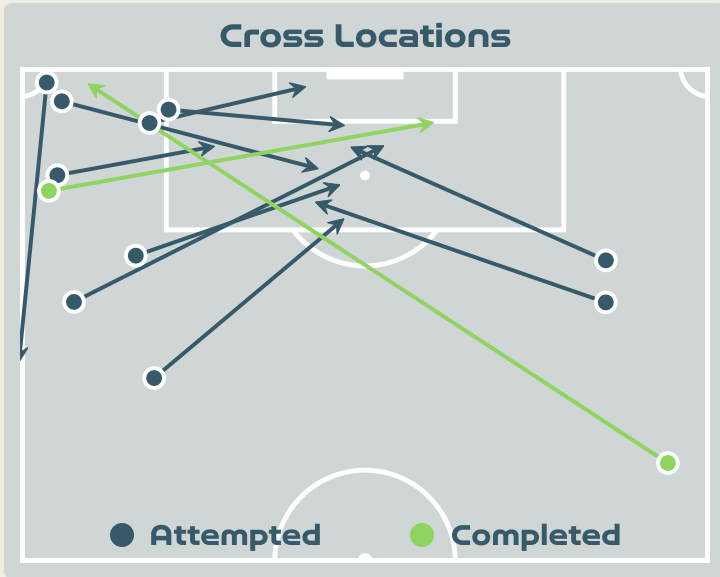
Key	Outcome	Shots
●	Goals	0
●	On Target	2
●	Off Target	5
●	Blocked	0
●	Incomplete	1

Attempts at Goal

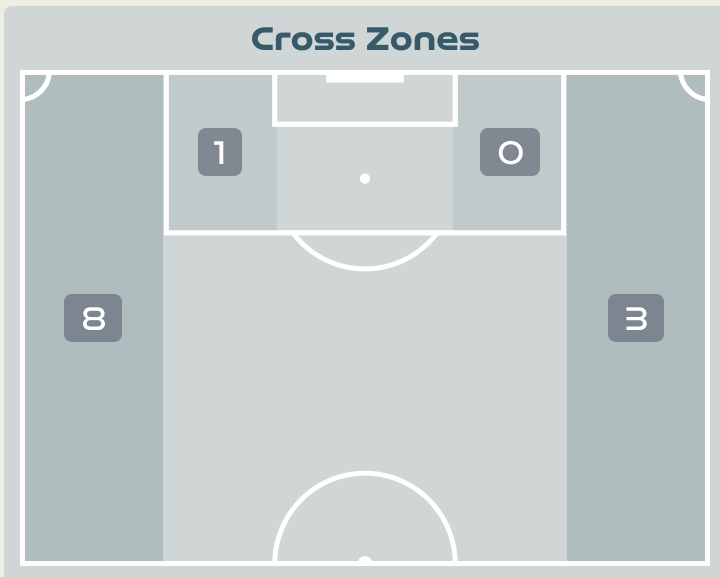
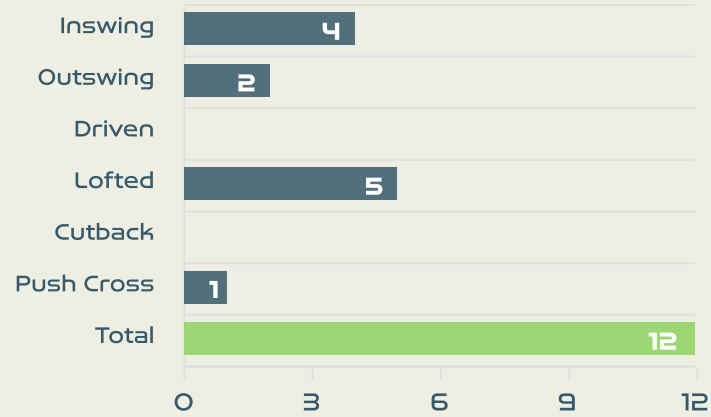
China PR

Time	Player	Outcome	Body Part	Delivery Type
5	15 CHEN Qiaozhu	Off Target	Left Foot	Loose Ball
7	19 ZHANG Linyan	On Target - Saved	Left Foot	Ball Progression
33	17 WU Chengshu	Incomplete - Player On Ball Error	Head	Cross
45	2 LI Mengwen	Off Target	Left Foot	Loose Ball
48	7 WANG Shuang	On Target - Saved	Left Foot	Loose Ball
64	7 WANG Shuang	Off Target	Left Foot	Pass
70	10 ZHANG Rui	Off Target	Right Foot	Loose Ball
78	7 WANG Shuang	Off Target	Left Foot	Pass

Crosses (Open Play)



Delivery Type



Attempted

12

Completed

2

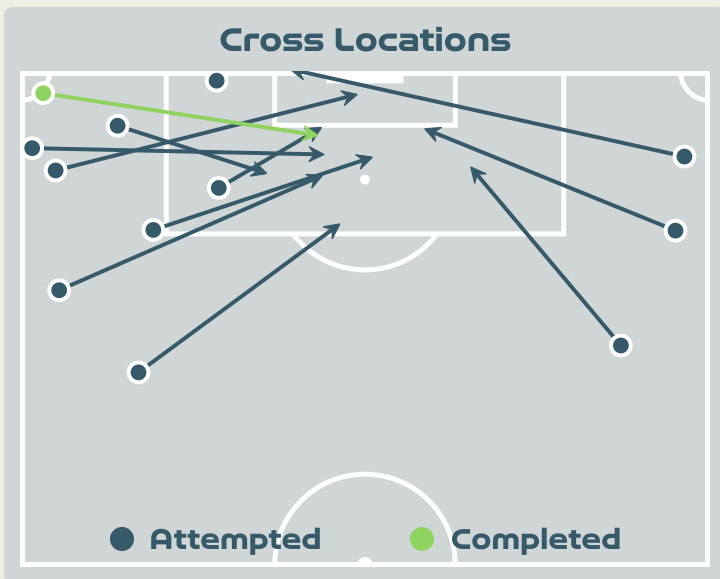
Most Crosses Attempted

5

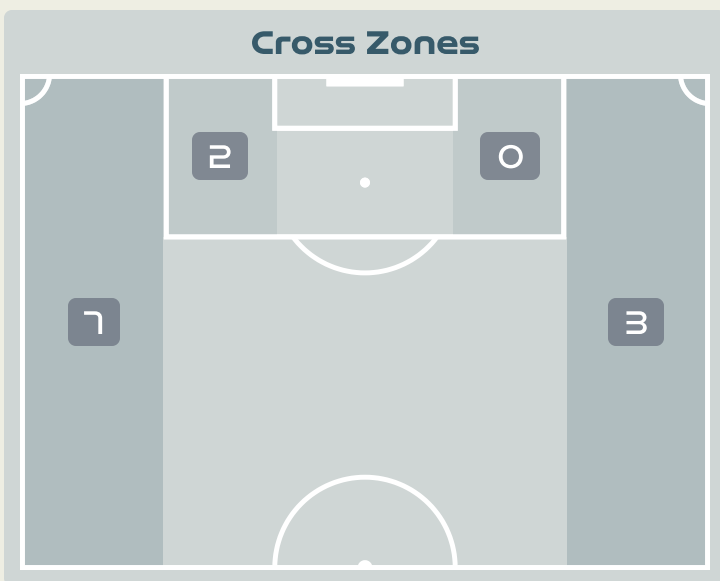
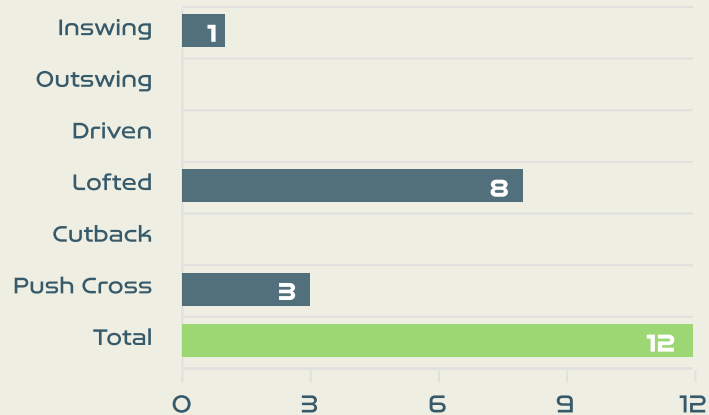
SORENSEN Nicoline
LEFT WINGER

#	Player	Inswing	Outswing	Driven	Lofted	Cutback	Push Cross	Total Attempted
1	CHRISTENSEN Lene	0	0	0	0	0	0	0
2	HASBO Josefine	0	0	0	0	0	0	0
3	BALLISAGER Stine	0	0	0	0	0	0	0
4	SEVECKE Rikke	1	0	0	1	0	0	2
5	BOYE Simone	0	0	0	0	0	0	0
6	HOLMGAARD Karen	0	0	0	0	0	0	0
10	HARDER Pernille	1	0	0	1	0	0	2
11	VEJE Katrine	0	1	0	1	0	1	3
12	KUHL Kathrine	0	0	0	0	0	0	0
14	SORENSEN Nicoline	2	1	0	2	0	0	5
19	THOMSEN Janni	0	0	0	0	0	0	0
9	VANGSGAARD Amalie	0	0	0	0	0	0	0
17	MADSEN Rikke Marie	0	0	0	0	0	0	0
20	BRUUN Signe	0	0	0	0	0	0	0

Crosses (Open Play)



Delivery Type



Attempted

12

Completed

1

Most Crosses Attempted

5

CHEN Qiaozhu
LEFT BACK

#	Player	Inswing	Outswing	Driven	Lofted	Cutback	Push Cross	Total Attempted
12	XU Huan	0	0	0	0	0	0	0
2	LI Mengwen	0	0	0	0	0	0	0
6	ZHANG Xin	0	0	0	1	0	0	1
8	YAO Wei	0	0	0	0	0	0	0
10	ZHANG Rui	0	0	0	1	0	0	1
11	WANG Shanshan	0	0	0	0	0	0	0
13	YANG Lina	0	0	0	0	0	0	0
14	LOU Jiahui	0	0	0	2	0	1	3
15	CHEN Qiaozhu	0	0	0	4	0	1	5
17	WU Chengshu	0	0	0	0	0	0	0
19	ZHANG Linyan	0	0	0	0	0	1	1
7	WANG Shuang	1	0	0	0	0	0	1
9	SHEN Mengyu	0	0	0	0	0	0	0
21	GU Yasha	0	0	0	0	0	0	0
23	GAO Chen	0	0	0	0	0	0	0

Offering to Receive

377
Total Offers Made

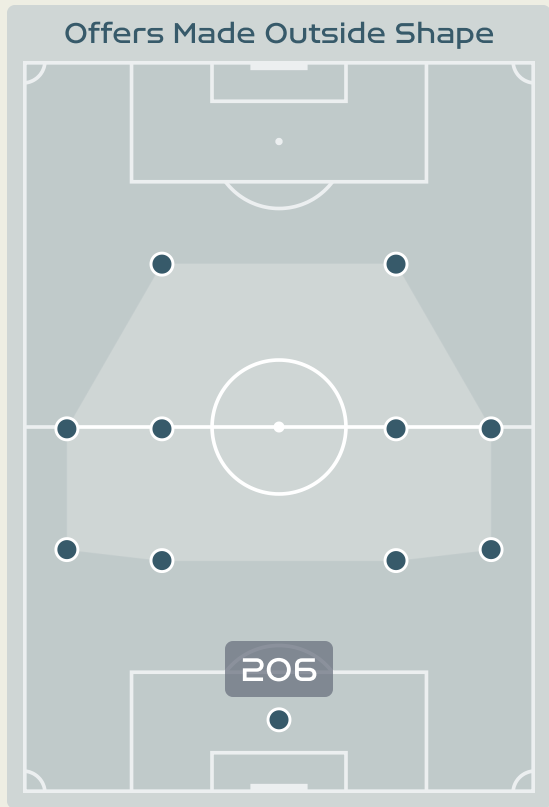
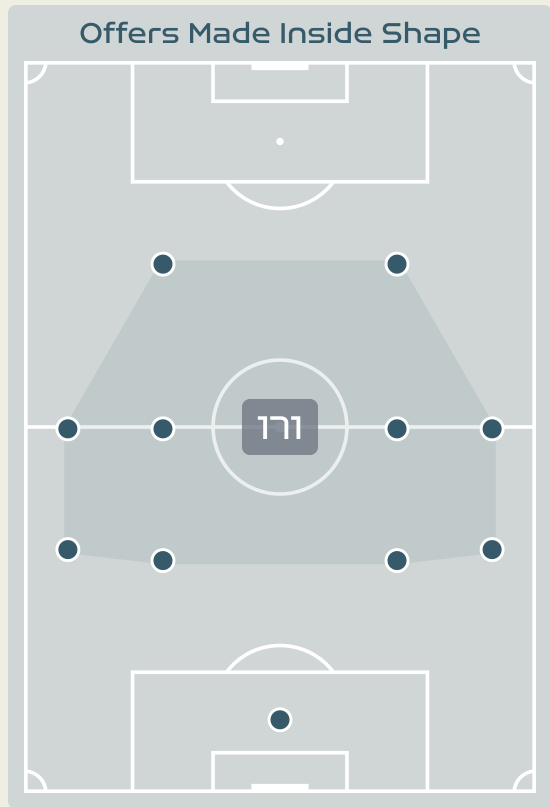
100
Total Offers Received

Most Offers
67
HARDER Pernille
CENTRE FORWARD

154
Offers Made in Final Third

158
Offers Made in Middle Third

65
Offers Made in Defensive Third



#	Player	Offers Made	Offers Received	% Made & Received
1	CHRISTENSEN Lene	19	6	31.6%
2	HASBO Josefine	24	4	16.7%
3	BALLISAGER Stine	32	12	37.5%
4	SEVECKE Rikke	11	5	45.5%
5	BOYE Simone	12	7	58.3%
6	HOLMGAARD Karen	46	12	26.1%
10	HARDER Pernille	67	8	11.9%
11	VEJE Katrine	26	14	53.8%
12	KUHL Kathrine	30	13	43.3%
14	SORENSEN Nicoline	45	9	20%
19	THOMSEN Janni	46	4	8.7%
9	VANGSGAARD Amalie	4	0	0%
17	MADSEN Rikke Marie	8	3	37.5%
20	BRUUN Signe	7	3	42.9%

China PR

Offering to Receive

290

Total Offers Made

105

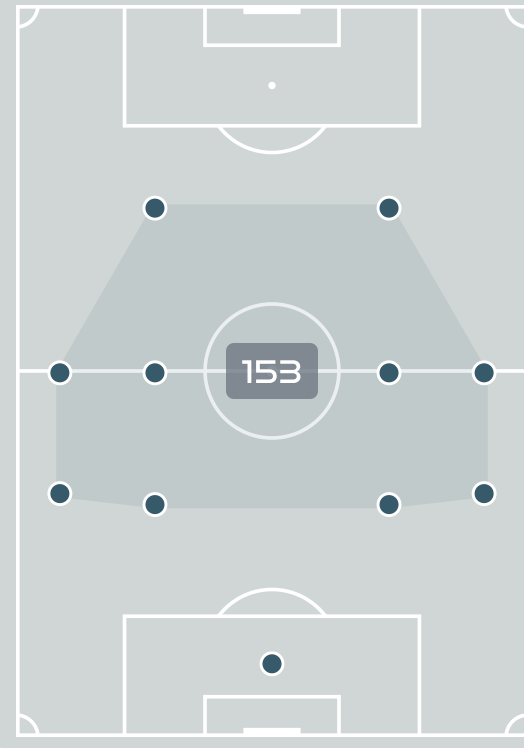
Total Offers Received

Most Offers

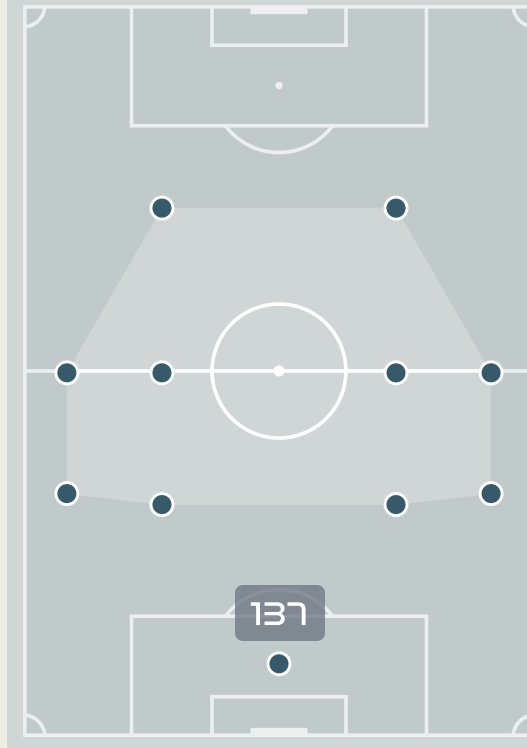
56

LOU Jiahui
CENTRE FORWARD LEFT

Offers Made Inside Shape



Offers Made Outside Shape



103

Offers Made in Final Third

150

Offers Made in Middle Third

37

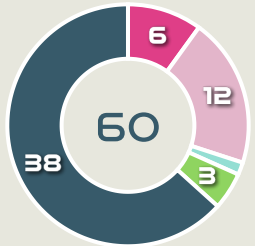
Offers Made in Defensive Third

#	Player	Offers Made	Offers Received	% Made & Received
12	XU Huan	3	1	33.3%
2	LI Mengwen	21	8	38.1%
6	ZHANG Xin	14	8	57.1%
8	YAO Wei	6	3	50%
10	ZHANG Rui	45	14	31.1%
11	WANG Shanshan	6	5	83.3%
13	YANG Lina	37	13	35.1%
14	LOU Jiahui	56	15	26.8%
15	CHEN Qiaozhu	25	9	36%
17	WU Chengshu	13	4	30.8%
19	ZHANG Linyan	33	11	33.3%
7	WANG Shuang	14	9	64.3%
9	SHEN Mengyu	13	4	30.8%
21	GU Yasha	3	1	33.3%
23	GAO Chen	1	0	0%

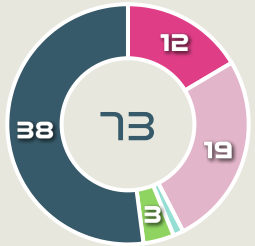
Movement to Receive

Movement Types by Phase

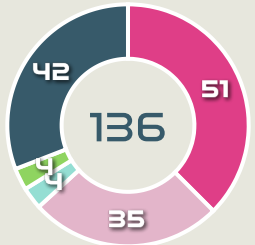
Final Third Phase



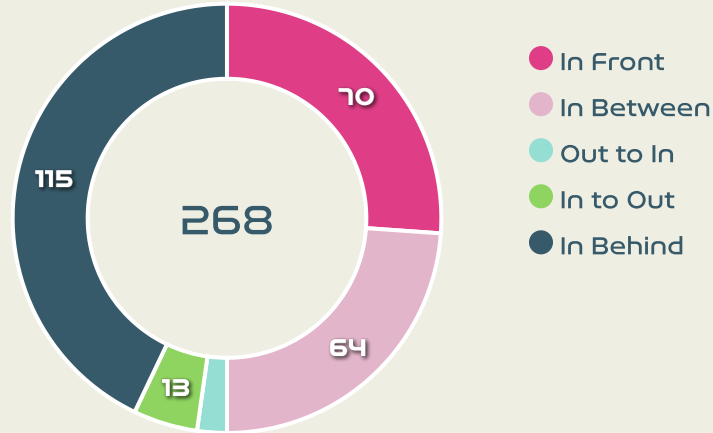
Progression Phase



Build Up Phase



All Movement Types

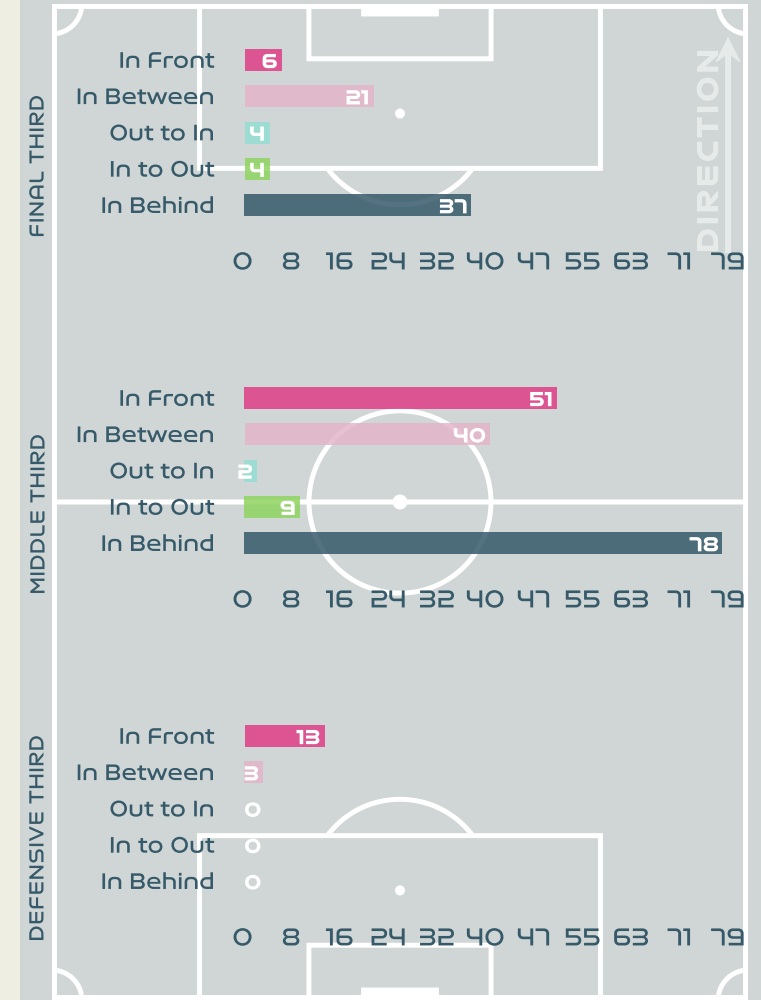


- In Front
- In Between
- Out to In
- In to Out
- In Behind

Top Ranked Players

Type	Player	Movements
In Front	6 HOLMGAARD Karen	28
In Between	12 KUHL Kathrine	15
Out to In	2 HASBO Josefine	1
In to Out	2 HASBO Josefine	3
In Behind	10 HARDER Pernille	42

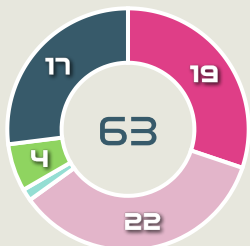
Movement Types Pitch Third



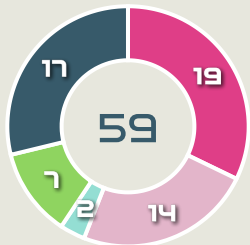
Movement to Receive

Movement Types by Phase

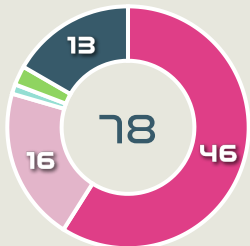
Final Third Phase



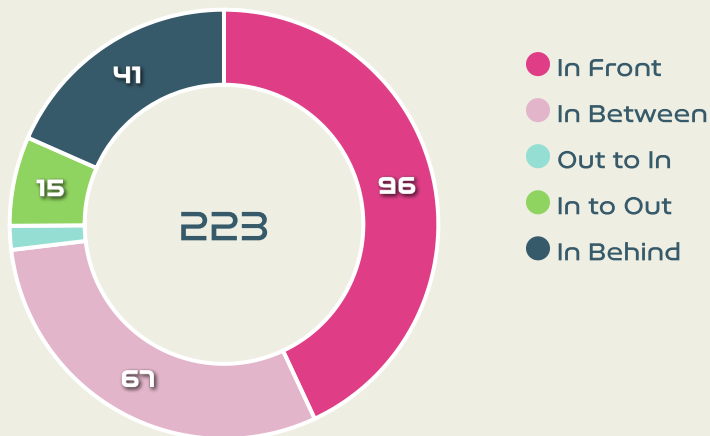
Progression Phase



Build Up Phase



All Movement Types

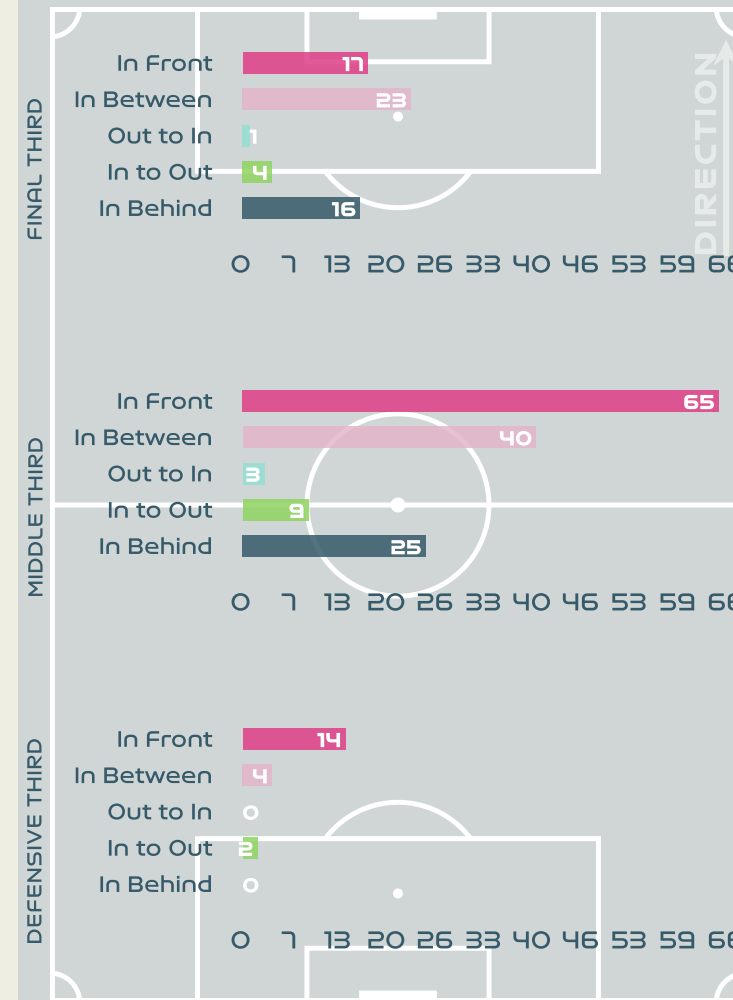


- In Front
- In Between
- Out to In
- In to Out
- In Behind

Top Ranked Players

Type	Player	Movements
In Front	10 ZHANG Rui	27
In Between	14 LOU Jiahui	23
Out to In	14 LOU Jiahui	3
In to Out	14 LOU Jiahui	5
In Behind	14 LOU Jiahui	10

Movement Types Pitch Third





OUT OF POSSESSION

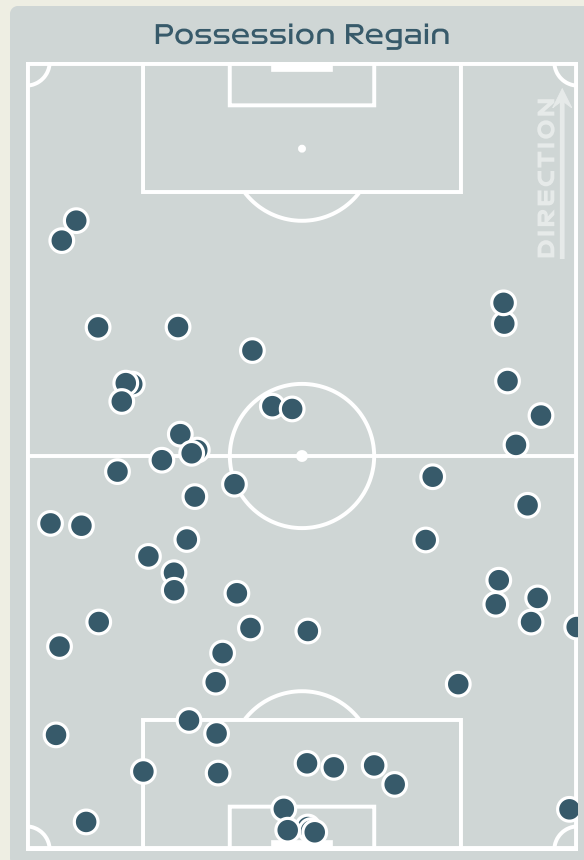
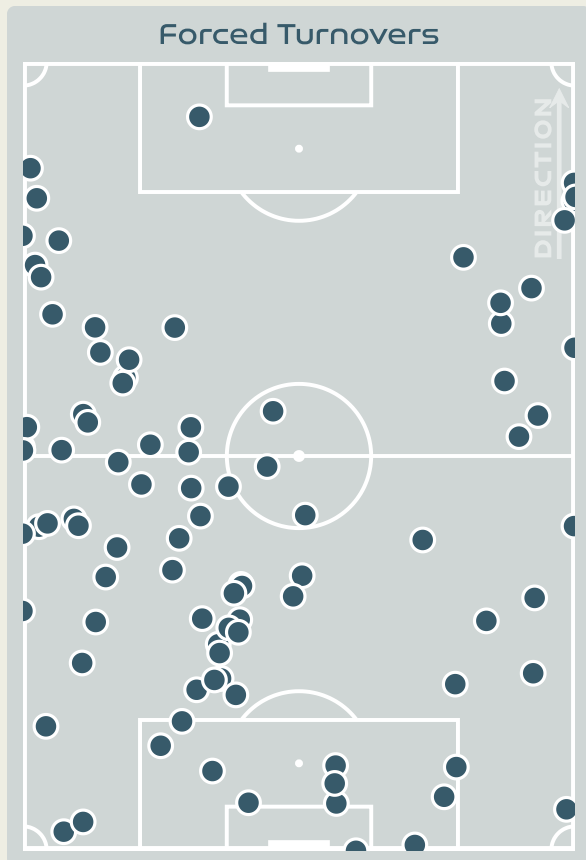
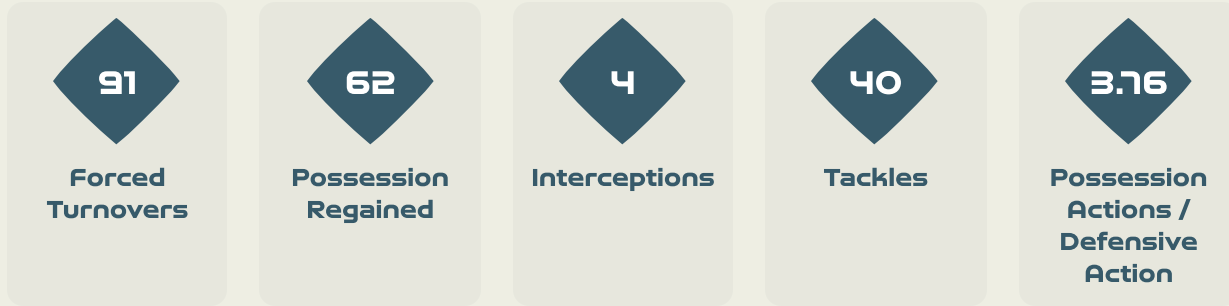


Denmark v China PR





Defensive Actions



Blocks



Possession Contests



Most Possession Regains

10

BALLISAGER Stine
RIGHT CENTRE BACK

#	Player	Total Possession Regains
1	CHRISTENSEN Lene	8
2	HASBO Josefine	6
3	BALLISAGER Stine	10
4	SEVECKE Rikke	7
5	BOYE Simone	8
6	HOLMGAARD Karen	8
10	HARDER Pernille	1
11	VEJE Katrine	4
12	KUHL Kathrine	4
14	SORENSEN Noline	1
19	THOMSEN Janni	3
9	VANGSGAARD Amalie	1
17	MADSEN Rikke Marie	1
20	BRUUN Signe	0

China PR

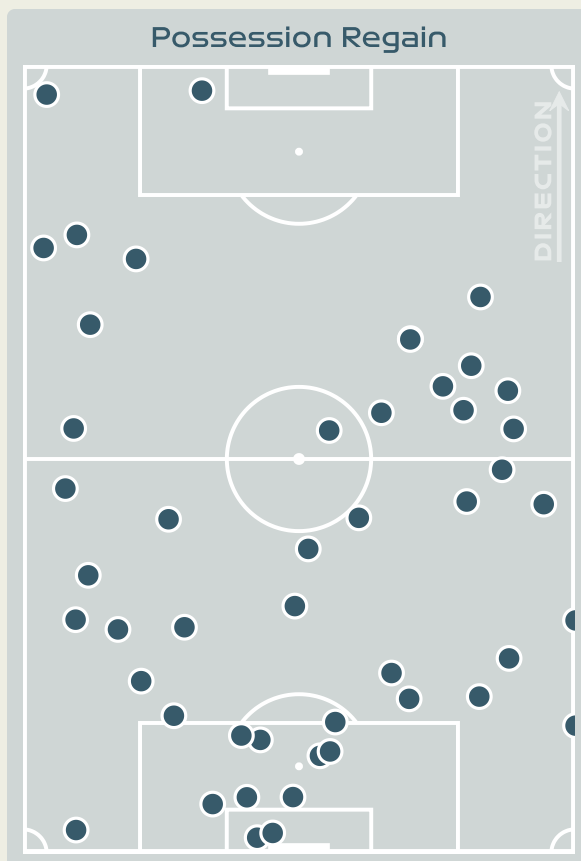
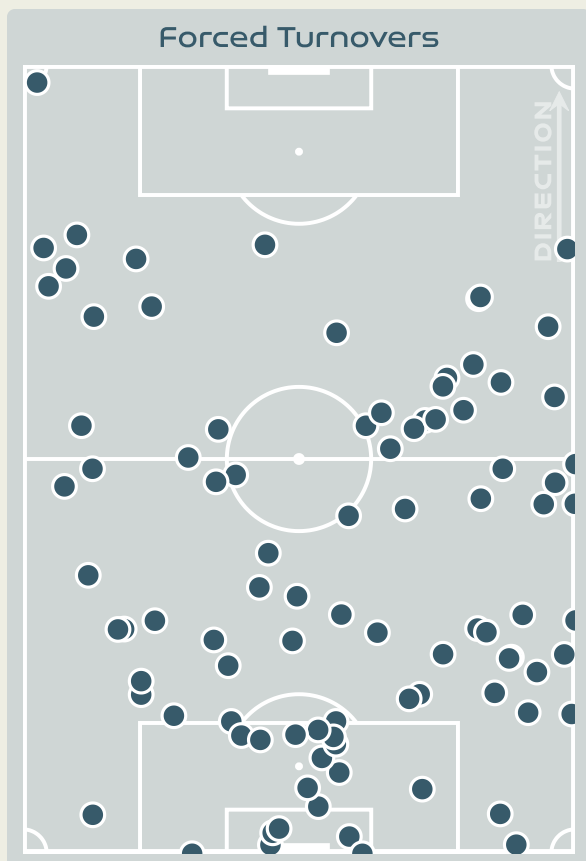
Defensive Actions



Blocks



#	Player	Total Possession Regains
12	XU Huan	5
2	LI Mengwen	2
6	ZHANG Xin	1
8	YAO Wei	9
10	ZHANG Rui	4
11	WANG Shanshan	9
13	YANG Lina	8
14	LOU Jiahui	5
15	CHEN Qiaozhu	4
17	WU Chengshu	0
19	ZHANG Linyan	3
7	WANG Shuang	1
9	SHEN Mengyu	1
21	GU Yasha	0
23	GAO Chen	0



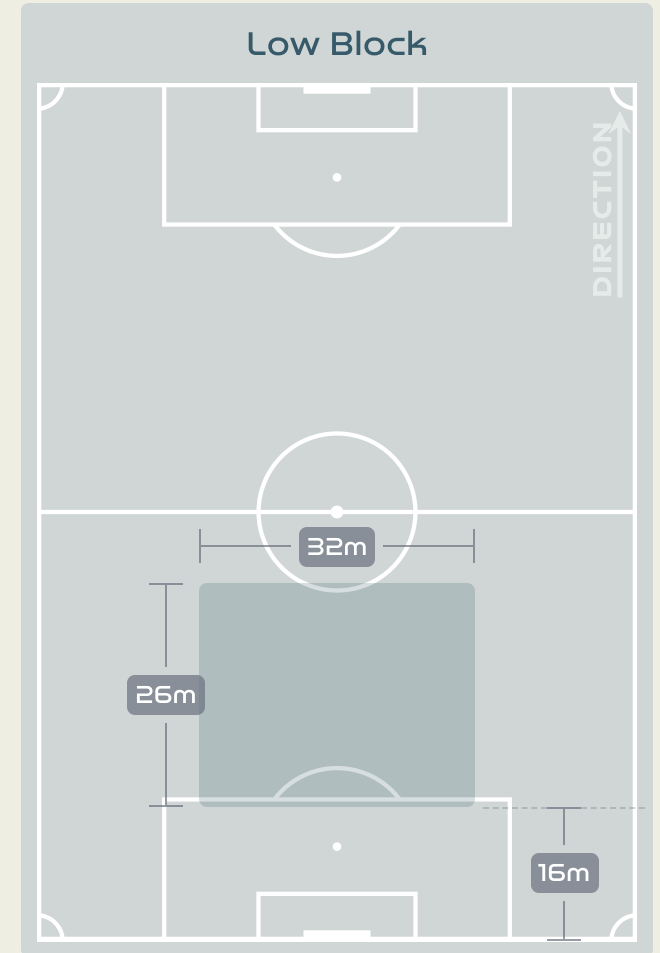
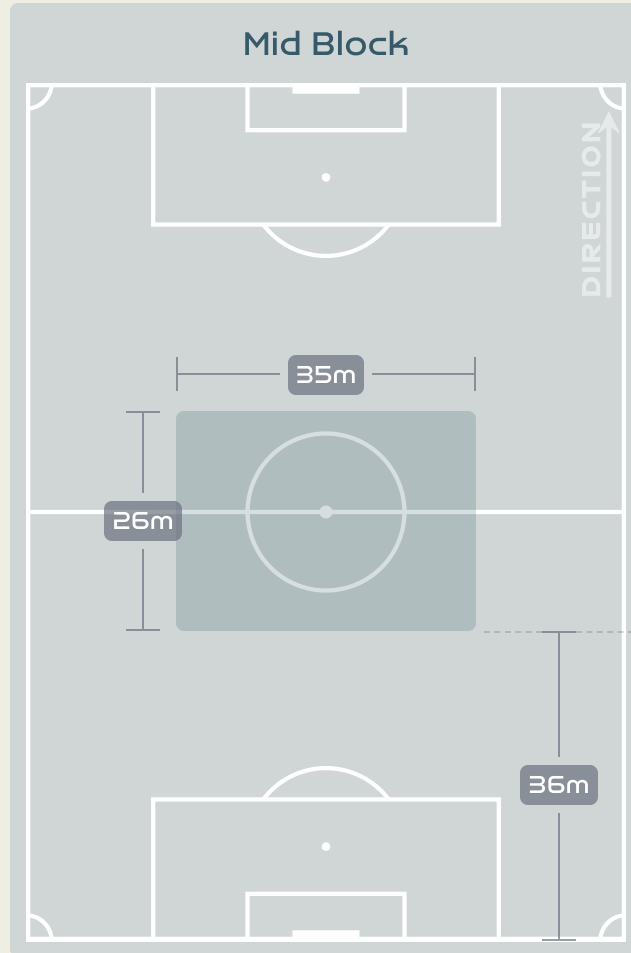
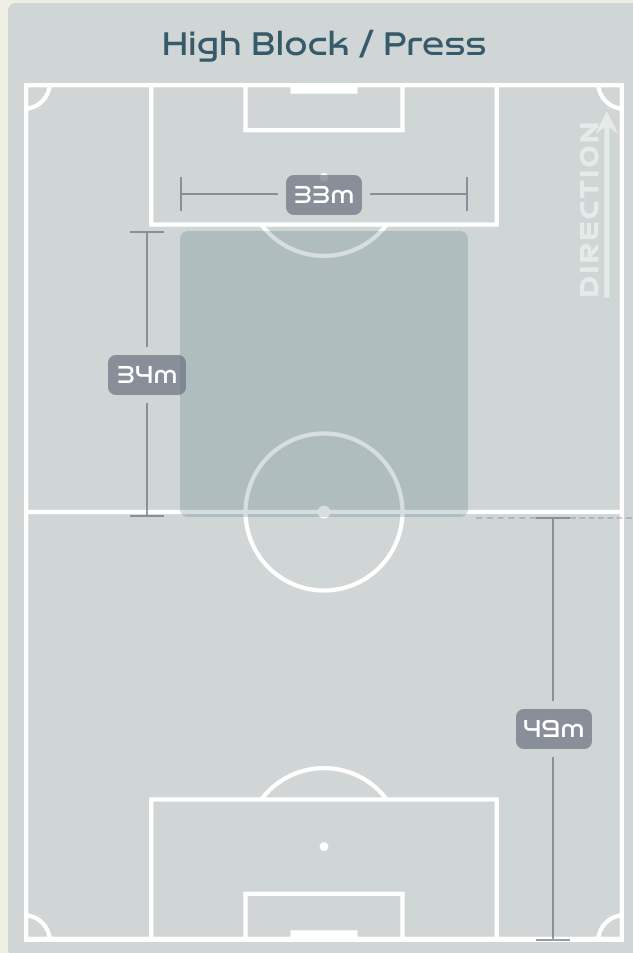
Possession Contests



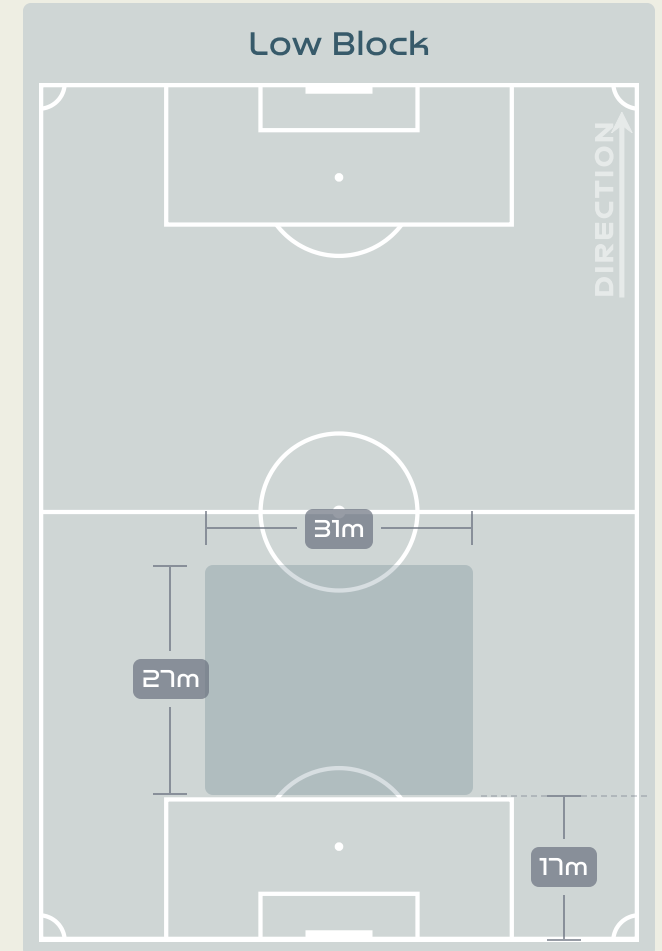
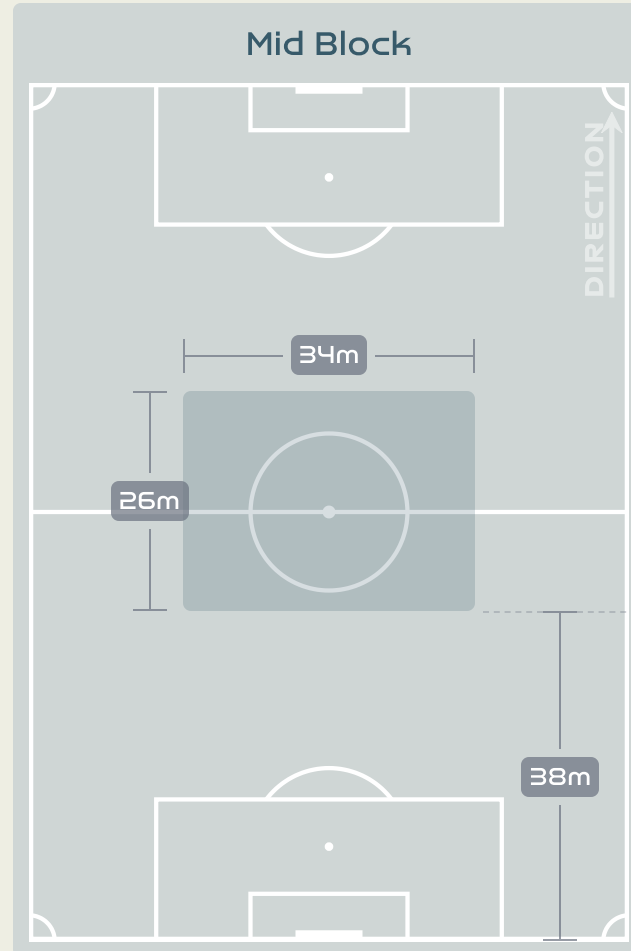
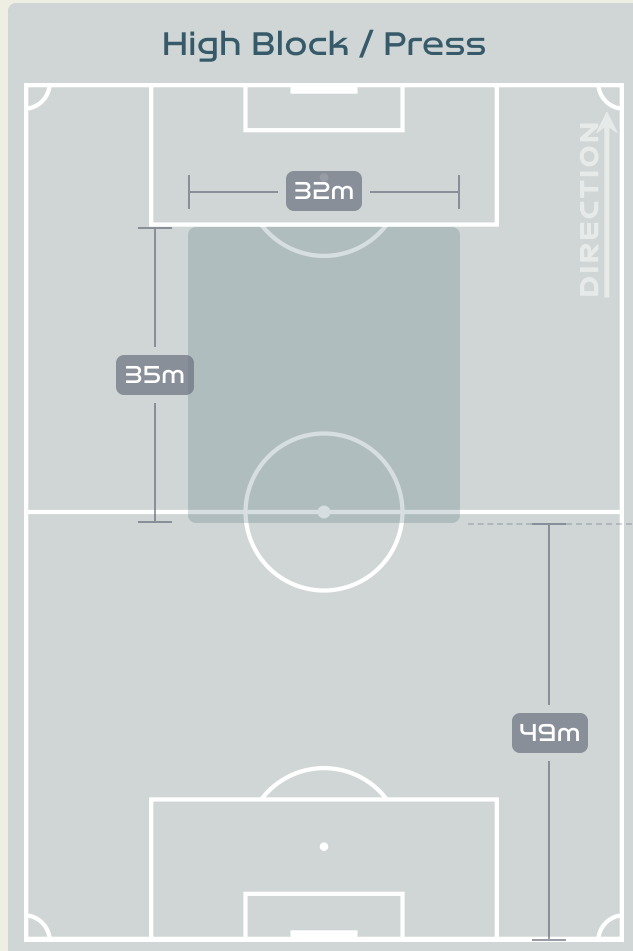
Most Possession Regains

9
YAO Wei
 LEFT CENTRE BACK

Defensive Line Height & Team Length



Defensive Line Height & Team Length



Defensive Pressure



Denmark

China PR



203	Total Pressures	220
58	Direct Pressures	51
1.29s	Avg Pressure Duration	1.39s
91	Forced Turnovers	92
7.51s	Ball Recovery Time	9.73s
79	Pushing on into Pressing	98
167	Pushing on	253
33	Pressing Direction Inside	36
106	Pressing Direction Outside	121

Most Direct Pressures

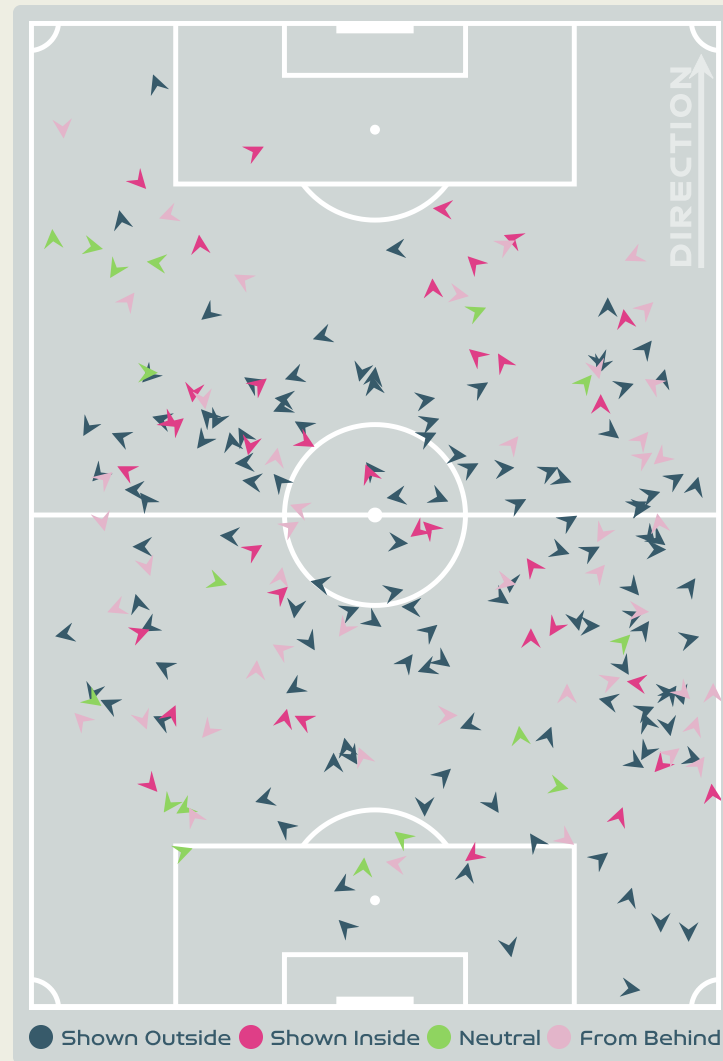
17

HOLMGAARD Karen
DEFENSIVE MIDFIELD CENTRE

Most Direct Pressures

11

YANG Lina
LEFT CENTRE MIDFIELD





GOALKEEPING



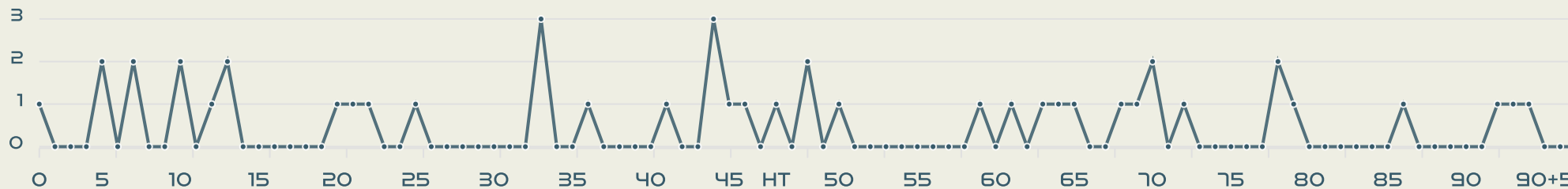
Denmark v China PR



Goalkeeping Involvement



Denmark GK Involvement Timeline

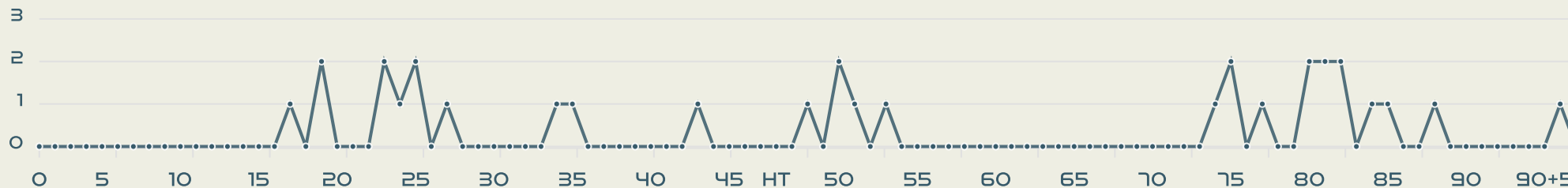


47

Total Involvements

China PR

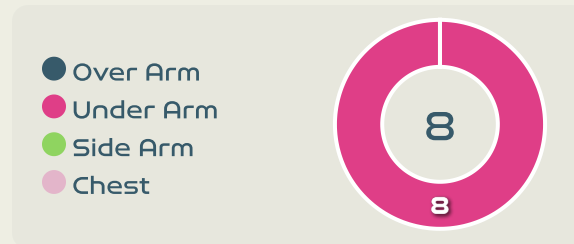
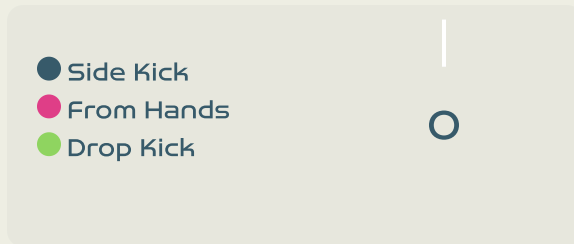
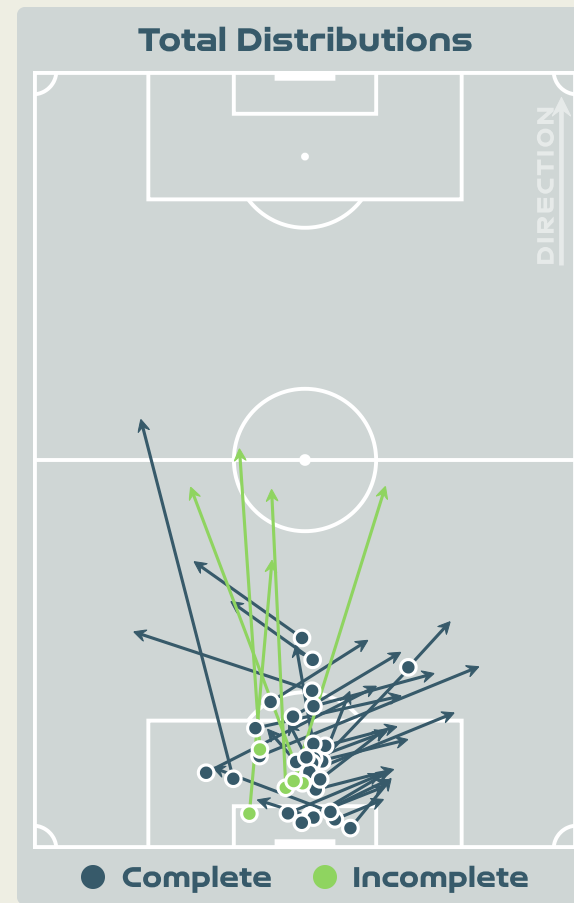
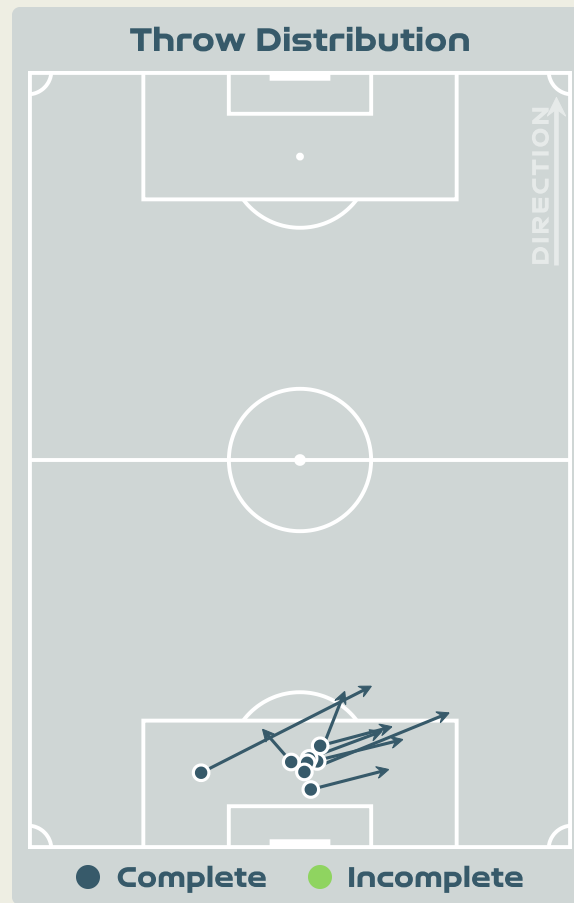
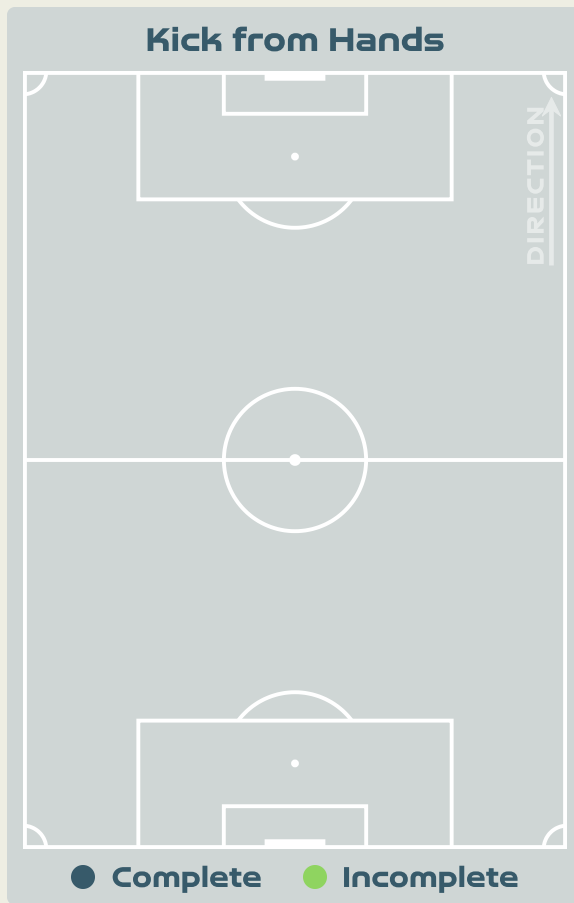
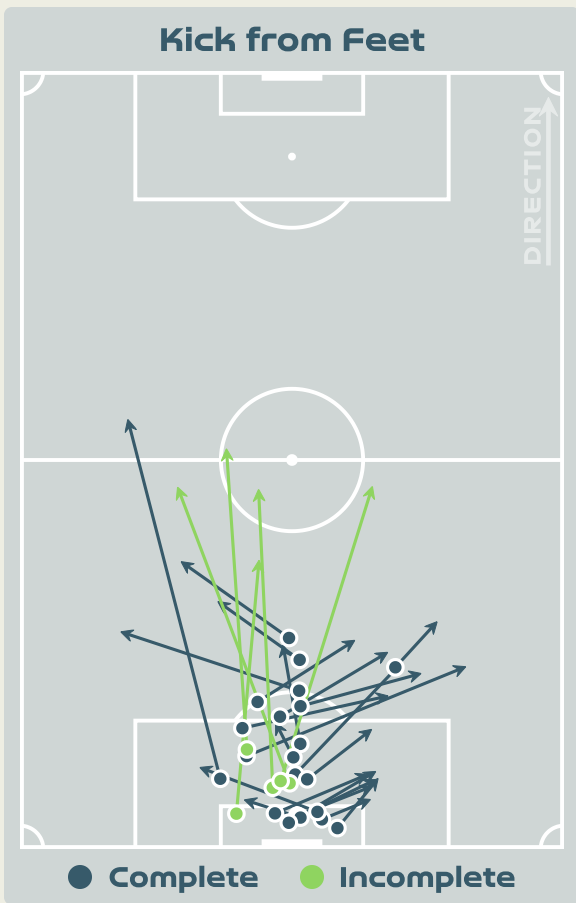
China PR GK Involvement Timeline



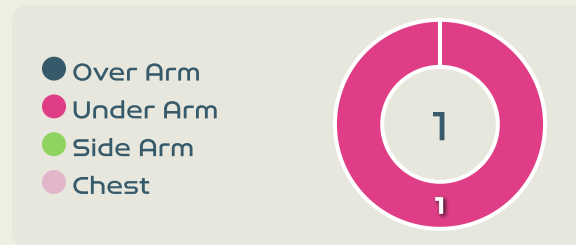
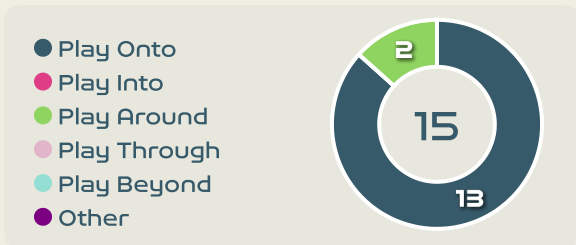
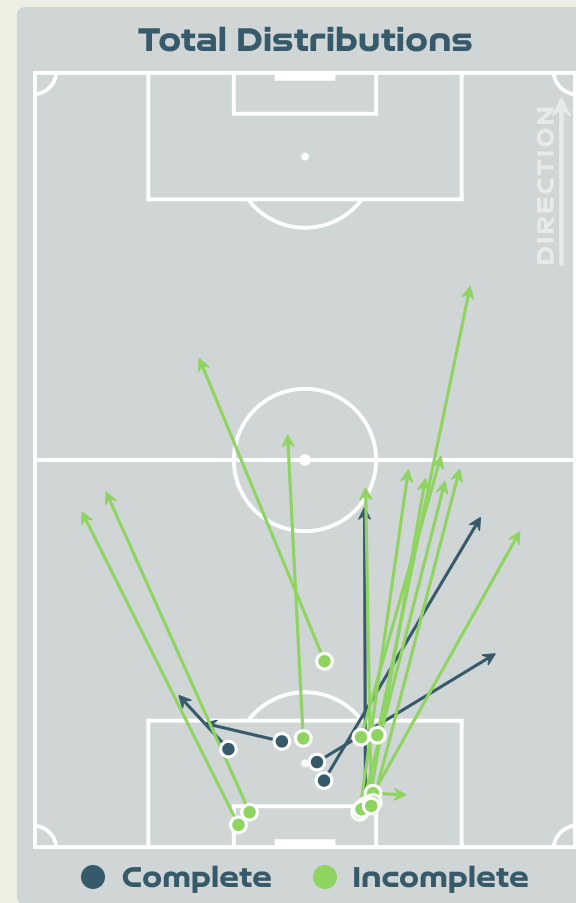
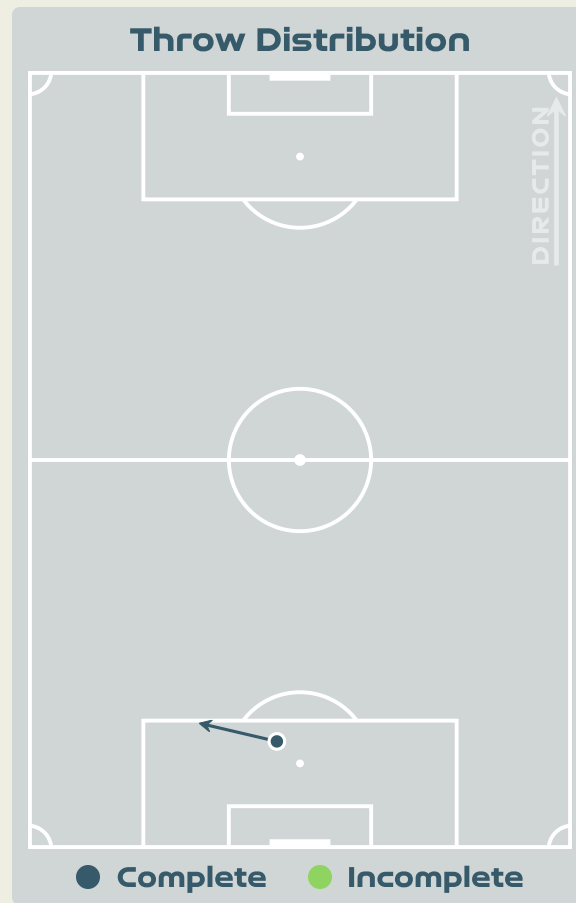
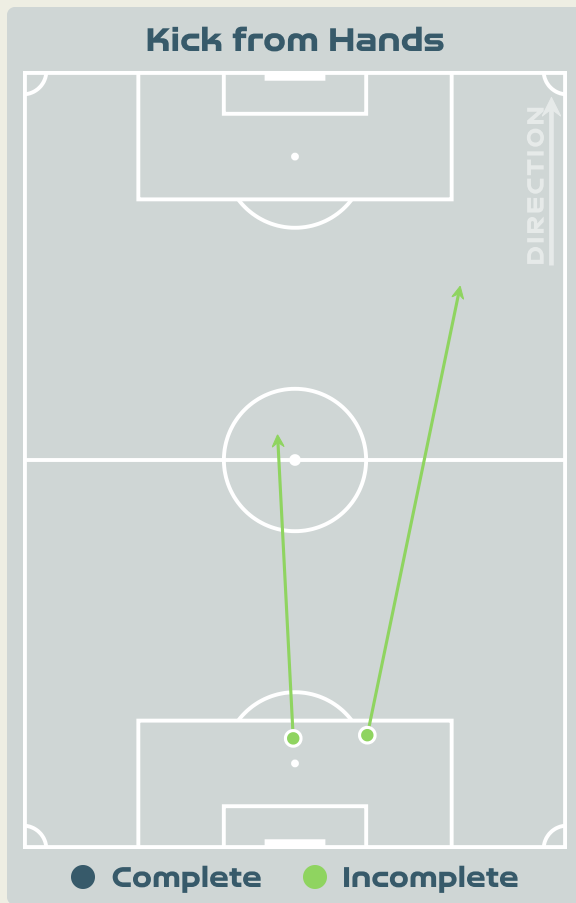
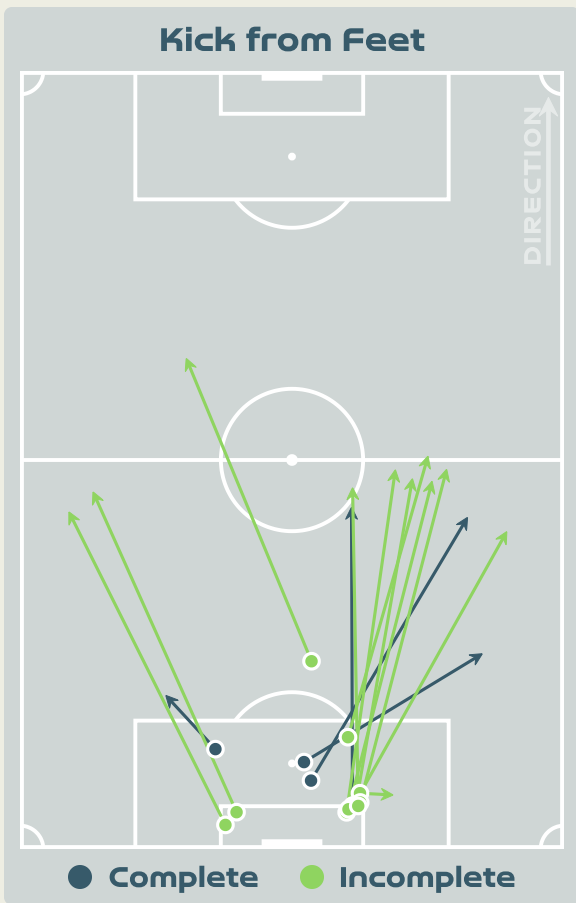
33

Total Involvements

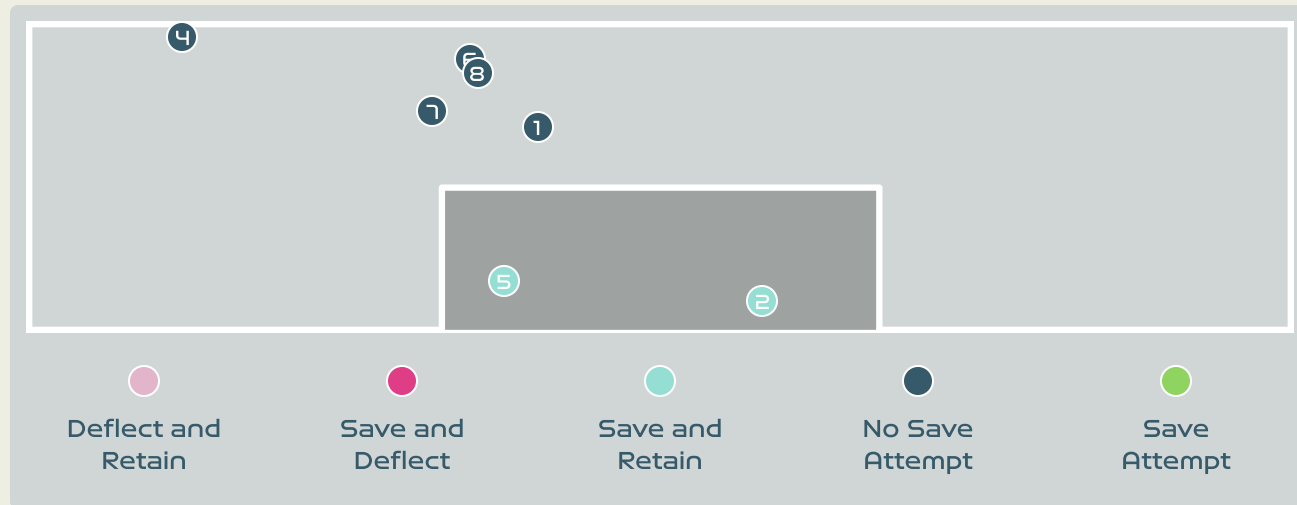
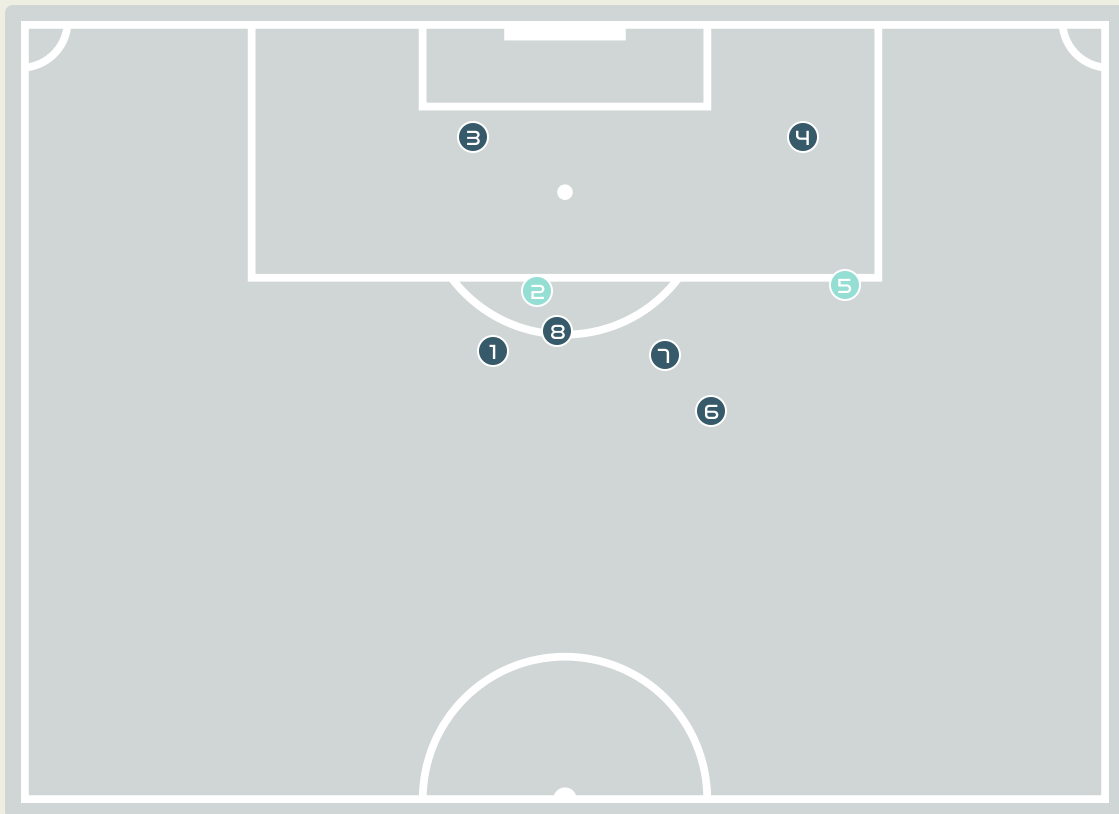
Goalkeeping Distribution



Goalkeeping Distribution

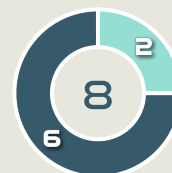


Goal Prevention



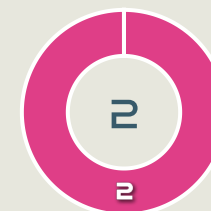
- Deflect and Retain
- Save and Deflect
- Save and Retain
- No Save Attempt
- Save Attempt

Intervention Type



- Deflect & Retain
- Save & Deflect
- Save & Retain
- No Save Attempt
- Save Attempt

Intervention Body Type



- Head
- Hands
- Upper Body
- Lower Body
- Feet

8

Total Attempts on Goal Faced

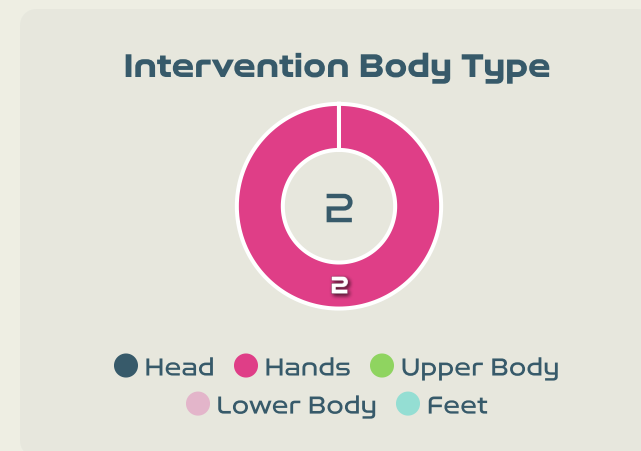
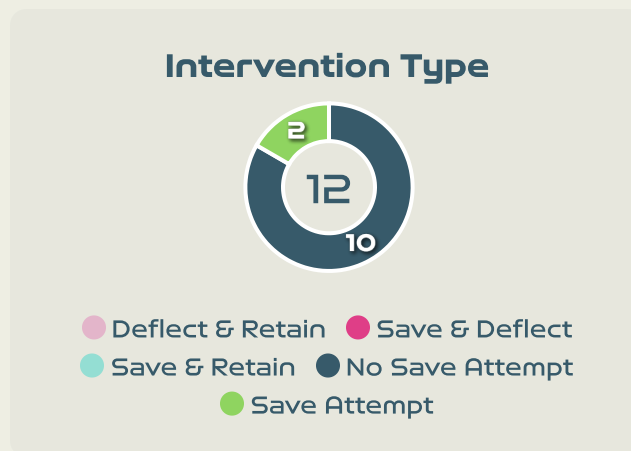
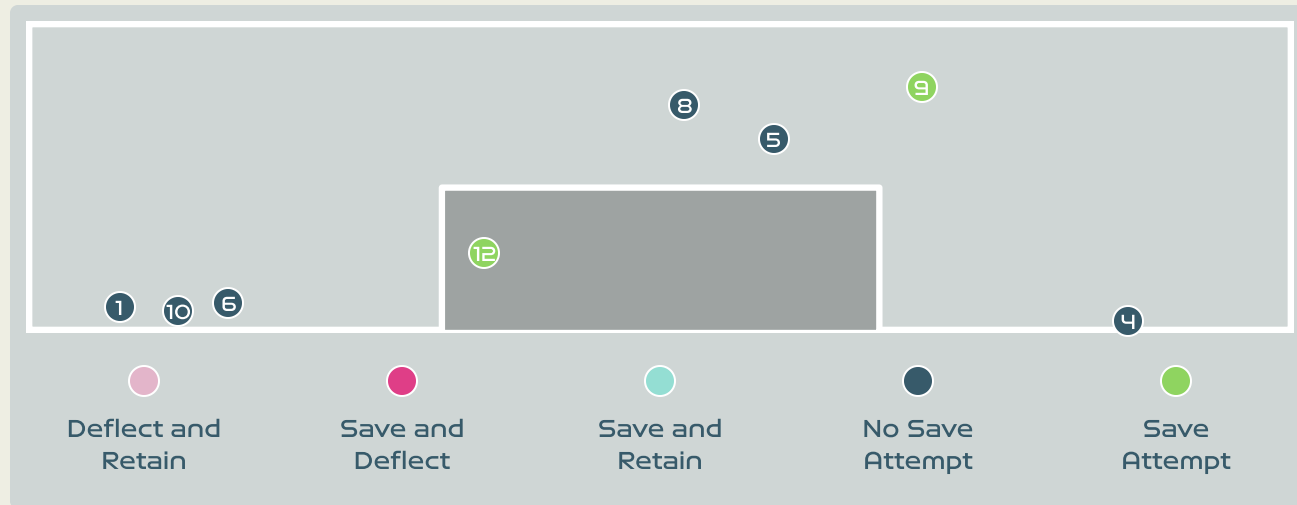
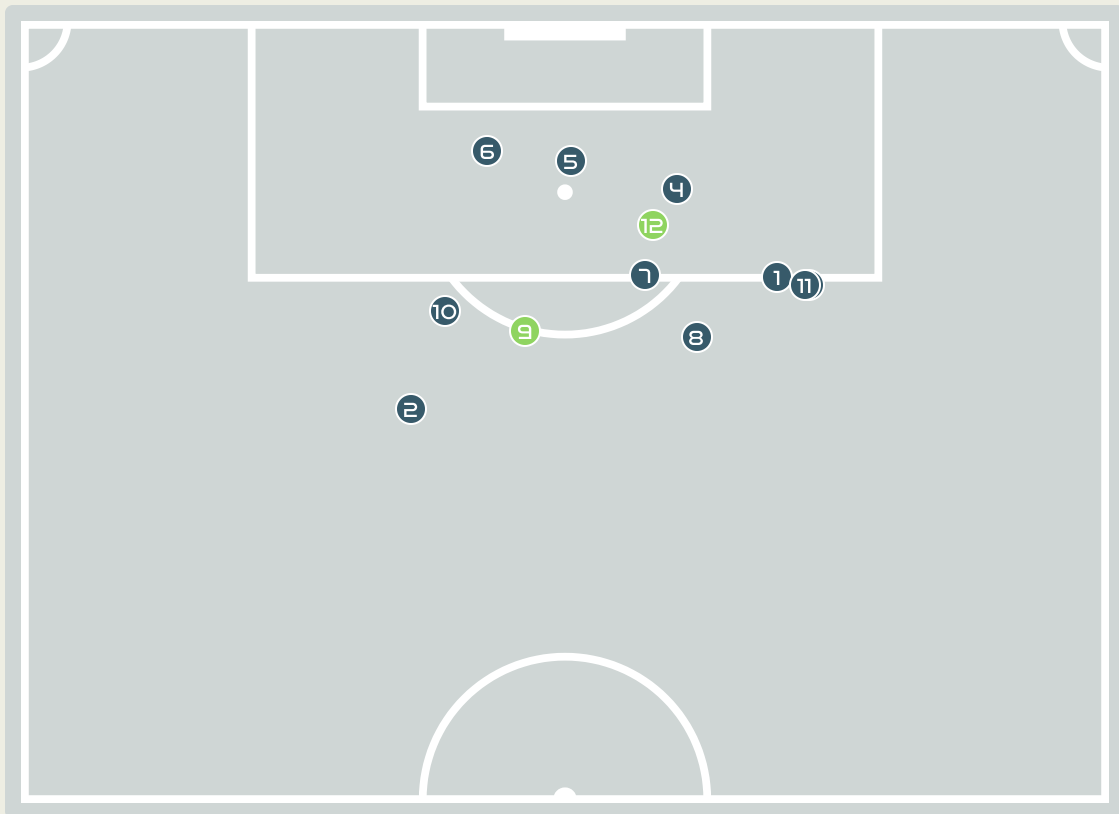
100

Save %

Total Attempts on Goal Faced	Total Goal Interventions	Save & Retain	Deflect & Retain	Save & Deflect	Save Attempt	No Save Attempt
8	2	2	0	0	0	6

China PR

Goal Prevention

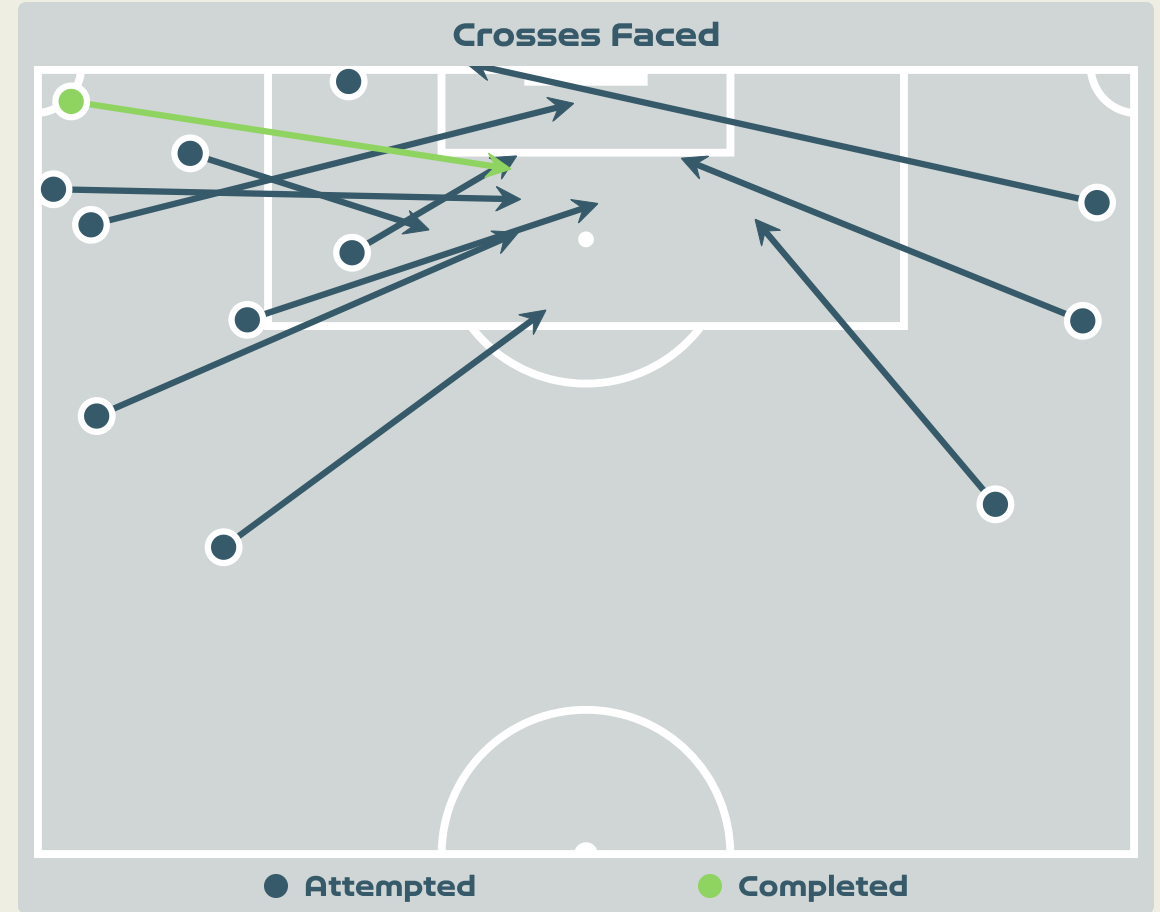
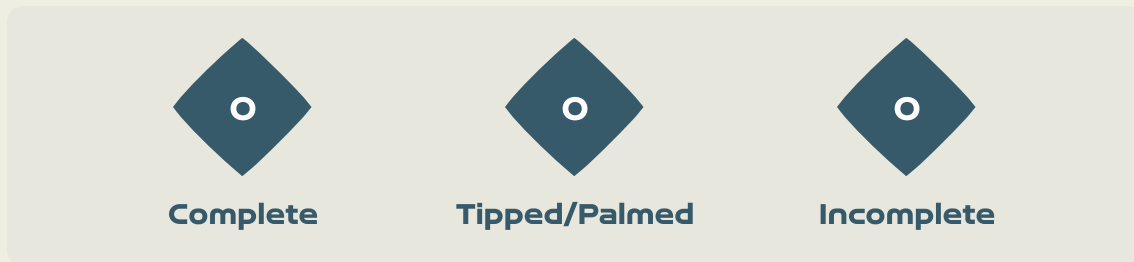


12
Total Attempts on Goal Faced

0
Save %

Total Attempts on Goal Faced	Total Goal Interventions	Save & Retain	Deflect & Retain	Save & Deflect	Save Attempt	No Save Attempt
12	0	0	0	0	2	10

Aerial Control

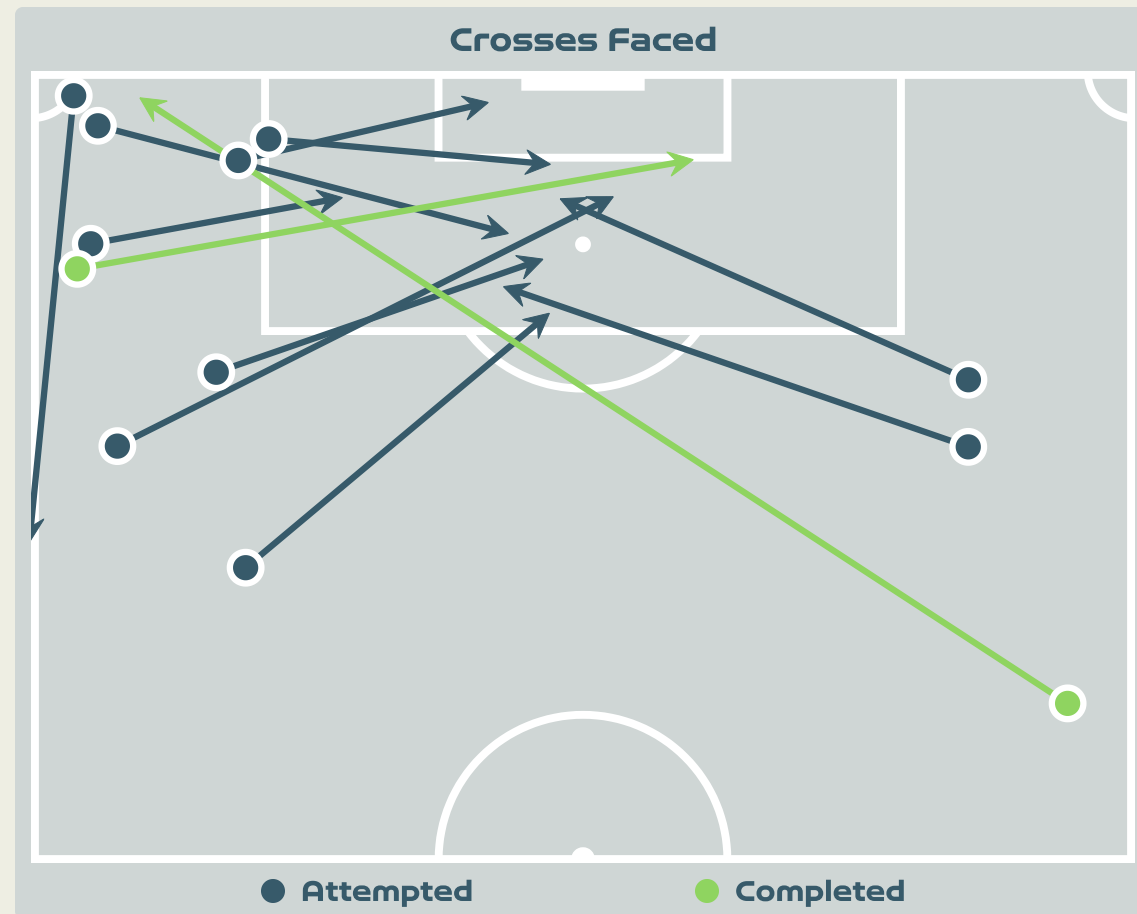
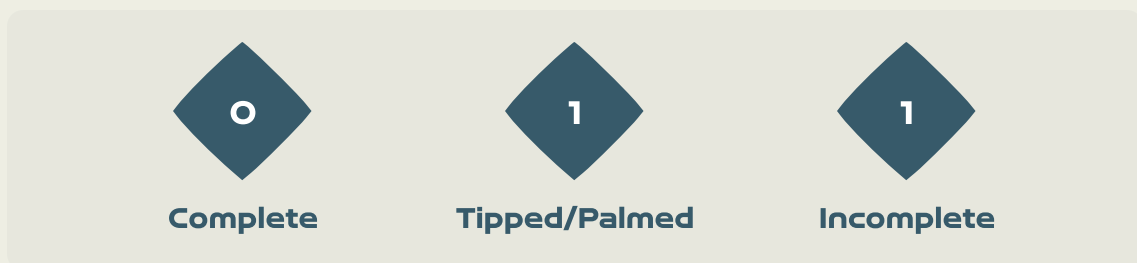
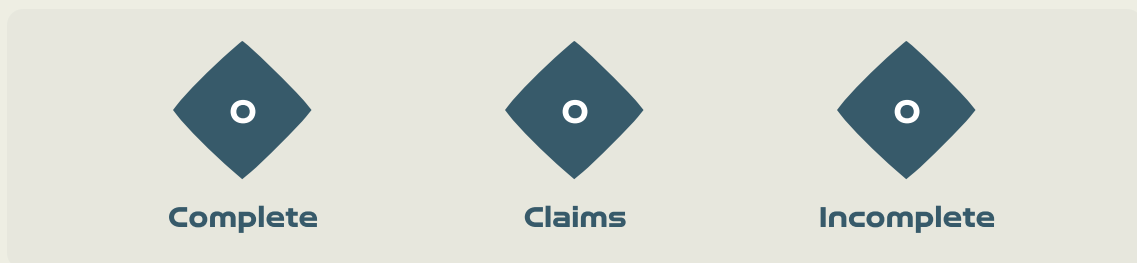


Delivery Types Faced

Total	In Swing	Out Swing	Driven	Lofted	Cutback	Push
17	6	0	0	8	0	3

Aerial Control

China PR



Delivery Types Faced

Total	In Swing	Out Swing	Driven	Lofted	Cutback	Push
18	6	2	0	9	0	1



SET PLAYS

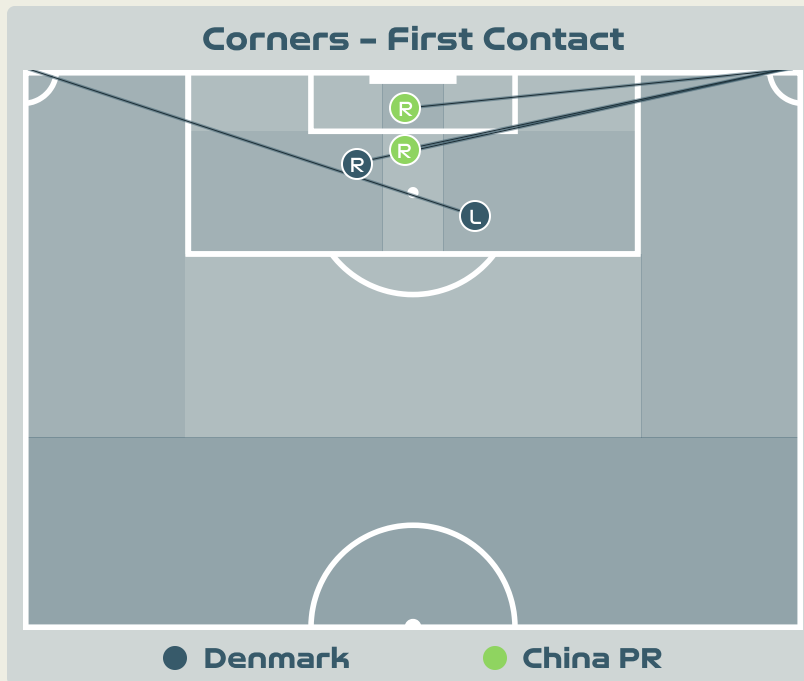
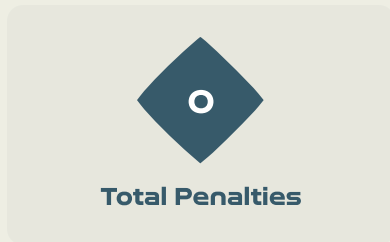


Denmark v China PR





Set Plays - Corners



Delivery Type	From Left Side	From Right Side	Total
Direct to Area	1	5	6
Short	0	0	0
Edge of Penalty Area	0	0	0

Delivery Style	Total
Inswing	2
Outswing	0
Driven	0

Free Kicks	
Type	Total
Direct	9
Direct (on target)	0
Direct (off target)	0
Indirect	3

First Contacts on Denmark Crosses



Top 5 Player First Contacts		
Player	Team	Total
ZHANG Rui	China PR	2
BOYE Simone	Denmark	1
VANGSGAARD Amalie	Denmark	1

Set Plays - Corners

45

Total Set Plays

12

Total Free Kicks

0

Total Penalties

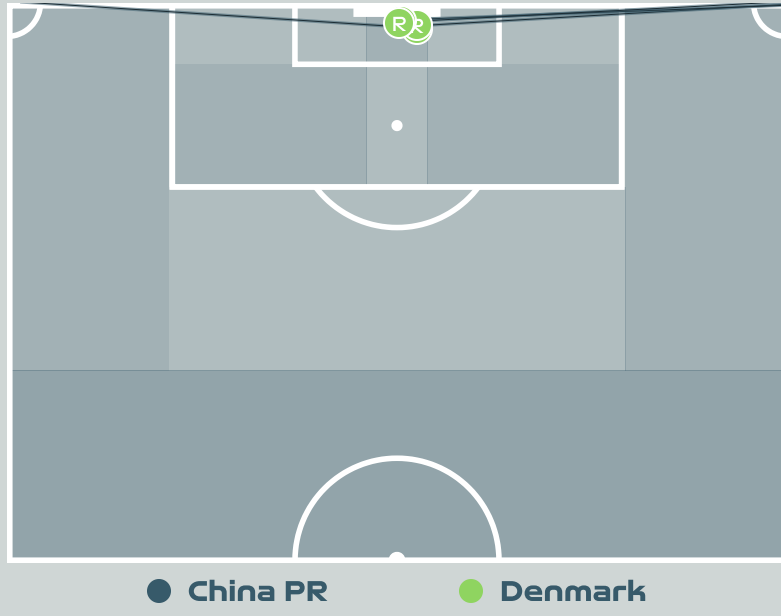
4

Total Corners

29

Total Throw Ins

Corners - First Contact



Delivery Type	From Left Side	From Right Side	Total
Direct to Area	1	3	4
Short	0	0	0
Edge of Penalty Area	0	0	0

Delivery Style	Total
Inswing	4
Outswing	0
Driven	0

Free Kicks

Type	Total
Direct	9
Direct (on target)	0
Direct (off target)	0
Indirect	3

First Contacts on China PR Crosses

0

By China PR

4

By Denmark

Top 5 Player First Contacts

Player	Team	Total
CHRISTENSEN Lene	Denmark	2
SEVECKE Rikke	Denmark	1
BOYE Simone	Denmark	1



INDIVIDUAL DATA IN POSSESSION



Denmark v China PR



In Possession - Distributions



#	Player	Passes Attempted	Passes Completed	Pass Completion %	Switches of Play	Crosses Attempted	Crosses Completed	Line Breaks Attempted	Line Breaks Completed	Line Break Completion %	Ball Progressions	Take Ons	Step Ins	Attempts at Goal	Goals
1	CHRISTENSEN Lene	35	30	86%	0	0	0	5	0	0%	0	0	0	0	0
2	HASBO Josefine	25	20	80%	0	0	0	8	4	50%	1	1	0	2	0
3	BALLISAGER Stine	84	70	83%	2	0	0	22	13	59%	0	0	0	0	0
4	SEVECKE Rikke	51	36	71%	0	2	1	21	10	47%	0	0	0	0	0
5	BOYE Simone	78	72	92%	0	0	0	11	7	63%	0	0	0	1	0
6	HOLMGAARD Karen	40	30	75%	0	0	0	9	4	44%	0	0	0	1	0
10	HARDER Pernille	14	10	71%	0	3	1	2	1	50%	2	1	1	2	0
11	VEJE Katrine	81	60	74%	0	8	2	27	11	40%	4	1	3	0	0
12	KUHL Kathrine	33	21	64%	0	0	0	10	6	60%	5	5	0	1	0
14	SORENSEN Nicoline	16	13	81%	0	5	0	5	1	20%	5	3	2	0	0
19	THOMSEN Janni	16	13	81%	0	0	0	2	2	100%	1	1	0	1	0
9	VANGSGAARD Amalie	3	2	67%	0	0	0	0	0	0%	0	0	0	2	1
17	MADSEN Rikke Marie	5	3	60%	0	0	0	1	0	0%	0	0	0	1	0
20	BRUUN Signe	7	5	71%	0	0	0	2	2	100%	0	0	0	1	0

In Possession - Offers & Receptions



			Offer movement types						
#	Player	Total Offers	In Front	In Between	Out to In	In to Out	In Behind	No Movement	Offers Received
1	CHRISTENSEN Lene	19	0	0	0	0	0	19	6
2	HASBO Josefine	24	5	10	1	3	3	2	4
3	BALLISAGER Stine	32	5	0	0	0	0	27	12
4	SEVECKE Rikke	11	5	2	0	0	1	3	5
5	BOYE Simone	12	2	1	0	0	0	9	7
6	HOLMGAARD Karen	46	28	13	1	1	2	1	12
10	HARDER Pernille	67	2	14	1	2	42	6	8
11	VEJE Katrine	26	8	1	1	0	4	12	14
12	KUHL Kathrine	30	8	15	1	2	1	3	13
14	SORENSEN Nicoline	45	2	2	0	2	25	14	9
19	THOMSEN Janni	46	5	2	1	2	26	10	4
9	VANGSGAARD Amalie	4	0	1	0	1	1	1	0
17	MADSEN Rikke Marie	8	0	2	0	0	4	2	3
20	BRUUN Signe	7	0	1	0	0	6	0	3

In Possession - Distributions

China PR

#	Player	Passes Attempted	Passes Completed	Pass Completion %	Switches of Play	Crosses Attempted	Crosses Completed	Line Breaks Attempted	Line Breaks Completed	Line Break Completion %	Ball Progressions	Take Ons	Step Ins	Attempts at Goal	Goals
12	XU Huan	18	5	28%	0	0	0	6	1	16%	0	0	0	0	0
2	LI Mengwen	49	40	82%	0	0	0	13	7	53%	1	1	0	1	0
6	ZHANG Xin	21	14	67%	0	2	0	3	0	0%	1	1	0	0	0
8	YAO Wei	35	26	74%	0	2	0	10	5	50%	1	0	1	0	0
10	ZHANG Rui	55	40	73%	0	1	0	20	13	65%	3	2	1	1	0
11	WANG Shanshan	38	26	68%	0	0	0	13	7	53%	0	0	0	0	0
13	YANG Lina	37	33	89%	2	0	0	12	10	83%	0	0	0	0	0
14	LOU Jiahui	19	18	95%	0	3	1	4	3	75%	2	1	1	0	0
15	CHEN Qiaozhu	39	28	72%	0	5	0	24	11	45%	1	0	1	1	0
17	WU Chengshu	20	14	70%	0	0	0	4	3	75%	3	3	0	1	0
19	ZHANG Linyan	26	20	77%	0	1	0	7	5	71%	2	1	1	1	0
7	WANG Shuang	22	15	68%	0	3	0	7	5	71%	0	0	0	3	0
9	SHEN Mengyu	9	7	78%	0	0	0	2	1	50%	0	0	0	0	0
21	GU Yasha	3	1	33%	0	0	0	1	1	100%	0	0	0	0	0
23	GAO Chen	5	4	80%	0	0	0	4	3	75%	0	0	0	0	0

In Possession - Offers & Receptions

China PR

			Offer movement types						
#	Player	Total Offers	In Front	In Between	Out to In	In to Out	In Behind	No Movement	Offers Received
12	XU Huan	3	0	0	0	0	0	3	1
2	LI Mengwen	21	10	0	0	1	3	7	8
6	ZHANG Xin	14	6	3	0	0	2	3	8
8	YAO Wei	6	1	0	0	0	0	5	3
10	ZHANG Rui	45	27	13	0	0	1	4	14
11	WANG Shanshan	6	0	0	0	0	0	6	5
13	YANG Lina	37	25	7	0	1	0	4	13
14	LOU Jiahui	56	6	23	3	5	10	9	15
15	CHEN Qiaozhu	25	9	0	0	0	4	12	9
17	WU Chengshu	13	2	4	0	2	5	0	4
19	ZHANG Linyan	33	2	10	1	5	9	6	11
7	WANG Shuang	14	3	6	0	1	3	1	9
9	SHEN Mengyu	13	2	1	0	0	3	7	4
21	GU Yasha	3	2	0	0	0	1	0	1
23	GAO Chen	1	1	0	0	0	0	0	0



INDIVIDUAL DATA OUT OF POSSESSION



Denmark v China PR



Out of Possession



#	Player	Tackles Made / Won	Blocks	Interceptions	Pressing Direct	Pressing Indirect	Duels Won - Aerial	Duels Won - Physical	Possession Contests won	Clearances	Loose Ball Receptions	Pushing On	Pushing On into Pressing	Possession Regains	Possession Interrupted
1	CHRISTENSEN Lene	0 / 0	0	0	0	0	0	0	0	1	4	0	0	8	0
2	HASBO Josefine	7 / 2	3	0	6	14	2	0	2	5	14	9	6	6	3
3	BALLISAGER Stine	2 / 1	3	2	2	6	1	0	4	10	10	6	1	10	7
4	SEVECKE Rikke	2 / 1	7	0	1	16	0	0	2	7	2	20	9	7	8
5	BOYE Simone	4 / 1	4	0	4	5	7	0	7	12	9	5	3	8	11
6	HOLMGAARD Karen	8 / 2	2	0	17	10	7	0	8	5	16	3	1	8	5
10	HARDER Pernille	3 / 1	1	0	3	24	3	0	3	0	8	31	18	1	1
11	VEJE Katrine	6 / 3	2	0	7	2	2	0	3	3	11	19	7	4	4
12	KUHL Kathrine	2 / 1	5	0	6	20	1	0	4	1	7	28	14	4	3
14	SORENSEN Nicoline	1 / 0	2	0	5	15	0	0	1	1	6	20	11	1	1
19	THOMSEN Janni	1 / 0	1	2	3	21	4	0	5	2	10	10	6	3	2
9	VANGSGAARD Amalie	0 / 0	0	0	0	3	1	0	1	1	3	1	0	1	1
17	MADSEN Rikke Marie	2 / 0	0	0	2	5	1	0	1	1	0	7	2	1	0
20	BRUUN Signe	2 / 0	0	0	2	4	2	0	2	0	0	8	1	0	1

Out of Possession

China PR

#	Player	Tackles Made / Won	Blocks	Interceptions	Pressing Direct	Pressing Indirect	Duels Won - Aerial	Duels Won - Physical	Possession Contests won	Clearances	Loose Ball Receptions	Pushing On	Pushing On into Pressing	Possession Regains	Possession Interrupted
12	XU Huan	0 / 0	0	0	0	0	0	0	0	1	4	0	0	5	1
2	LI Mengwen	3 / 1	0	1	5	11	0	0	0	5	8	22	6	2	6
6	ZHANG Xin	1 / 0	0	0	2	14	0	0	1	2	6	6	5	1	2
8	YAO Wei	0 / 0	2	2	1	7	0	1	1	12	3	16	2	9	8
10	ZHANG Rui	8 / 0	4	3	10	26	3	0	4	6	17	46	16	4	9
11	WANG Shanshan	3 / 1	1	1	5	1	3	0	3	16	7	8	2	9	10
13	YANG Lina	11 / 5	4	2	11	11	1	0	2	4	12	38	7	8	11
14	LOU Jiahui	1 / 0	5	1	4	20	3	0	4	1	3	20	15	5	5
15	CHEN Qiaozhu	1 / 0	2	1	2	7	4	2	6	8	15	19	3	4	6
17	WU Chengshu	2 / 0	0	0	4	25	1	0	1	1	9	32	16	0	1
19	ZHANG Linyan	5 / 2	1	0	5	30	0	0	0	1	7	31	16	3	2
7	WANG Shuang	0 / 0	1	0	0	10	0	0	1	0	5	4	3	1	0
9	SHEN Mengyu	0 / 0	1	1	0	4	0	0	0	0	2	5	3	1	1
21	GU Yasha	0 / 0	0	0	1	1	0	0	0	0	2	4	2	0	0
23	GAO Chen	1 / 0	0	0	1	2	0	0	0	2	1	2	2	0	2



INDIVIDUAL DATA PHYSICAL



Denmark v China PR



Physical Data



#	Player	Total Distance (m)	Zone 1: 0-7 km/h (m)	Zone 2: 7-13km/h (m)	Zone 3: 13-19km/h (m)	Zone 4: 19-23km/h (m)	Zone 5: 23+ km/h (m)	High Speed Runs (Zone 4)	Sprints (Zone 5)	Top Speed (km/h)
1	CHRISTENSEN Lene	5148.4	3438.6	1289.2	402.6	18.0	0	36.0	1.0	24.0
2	HASBO Josefine	12494.2	2768.7	5103.9	3798.2	714.7	107.5	266.0	51.0	26.9
3	BALLISAGER Stine	10173.7	3285.1	4217.0	2155.8	324.5	190.2	194.0	36.0	28.3
4	SEVECKE Rikke	10547.9	3519.8	4276.1	2294.2	410.3	47.5	175.0	29.0	25.9
5	BOYE Simone	9584.1	3365.0	4171.0	1753.9	241.5	52.7	155.0	25.0	26.8
6	HOLMGAARD Karen	11584.3	3405.8	4455.3	2926.2	611.7	185.3	236.0	45.0	32.9
10	HARDER Pernille	10709.4	4062.1	3165.7	2586.3	629.7	265.6	238.0	60.0	29.0
11	VEJE Katrine	11633.8	3380.8	4778.0	2724.6	575.9	174.5	201.0	45.0	28.2
12	KUHL Kathrine	7811.7	2118.5	3438.7	1715.4	496.8	43.0	141.0	32.0	26.5
14	SORENSEN Nicoline	8513.5	2831.6	2991.6	1883.2	560.2	246.0	168.0	50.0	31.6
19	THOMSEN Janni	9796.4	2988.9	3445.4	2463.8	621.1	278.2	200.0	54.0	28.4
9	VANGSGAARD Amalie	1471.5	478.7	523.0	341.4	109.5	19.1	25.0	8.0	26.3
17	MADSEN Rikke Marie	2937.5	700.3	1063.9	745.5	310.8	116.9	59.0	27.0	28.7
20	BRUUN Signe	3520.6	1278.3	1159.0	849.5	202.1	31.7	78.0	16.0	25.5

Physical Data

China PR

#	Player	Total Distance (m)	Zone 1: 0-7 km/h (m)	Zone 2: 7-13km/h (m)	Zone 3: 13-19km/h (m)	Zone 4: 19-23km/h (m)	Zone 5: 23+ km/h (m)	High Speed Runs (Zone 4)	Sprints (Zone 5)	Top Speed (km/h)
12	XU Huan	4936.1	3928.2	819.4	183.1	5.4	0	30.0	1.0	28.3
2	LI Mengwen	9236.8	2918.8	3879.4	1864.0	429.5	144.1	167.0	33.0	27.4
6	ZHANG Xin	5893.2	1509.8	2467.5	1485.7	353.6	76.0	122.0	30.0	25.9
8	YAO Wei	9810.3	3460.1	4365.6	1634.4	223.7	126.6	160.0	27.0	27.0
10	ZHANG Rui	11153.5	3389.5	3785.5	3366.1	581.1	31.2	242.0	44.0	25.0
11	WANG Shanshan	9360.3	3782.5	3630.8	1570.7	315.4	60.8	138.0	23.0	26.0
13	YANG Lina	11149.4	3360.4	4766.4	2426.1	498.4	99.2	205.0	38.0	26.4
14	LOU Jiahui	9846.3	2838.7	3232.6	3022.8	586.8	164.4	241.0	55.0	26.2
15	CHEN Qiaozhu	11156.7	3277.8	4336.6	2799.2	608.0	133.9	218.0	44.0	29.2
17	WU Chengshu	9999.8	3384.9	3632.9	2404.0	458.0	120.0	195.0	40.0	26.4
19	ZHANG Linyan	10797.7	3679.8	3662.6	2494.3	754.8	206.2	219.0	60.0	29.4
7	WANG Shuang	5391.5	1954.4	1696.2	1323.6	301.9	115.9	112.0	25.0	28.9
9	SHEN Mengyu	2345.4	570.9	836.1	616.6	253.1	68.7	60.0	20.0	26.5
21	GU Yasha	809.9	208.8	223.1	297.2	80.8	0	25.0	6.0	24.1
23	GAO Chen	1240.5	417.4	517.5	208.0	38.2	59.3	24.0	4.0	29.0

