



# Nigeria 0 - 0 Canada

Group B - Match 4

21 July 2023

12:30 Kick Off

AAMI Park

## POST MATCH SUMMARY REPORT

# Match Summary - Teams



**Nigeria**



**Canada**

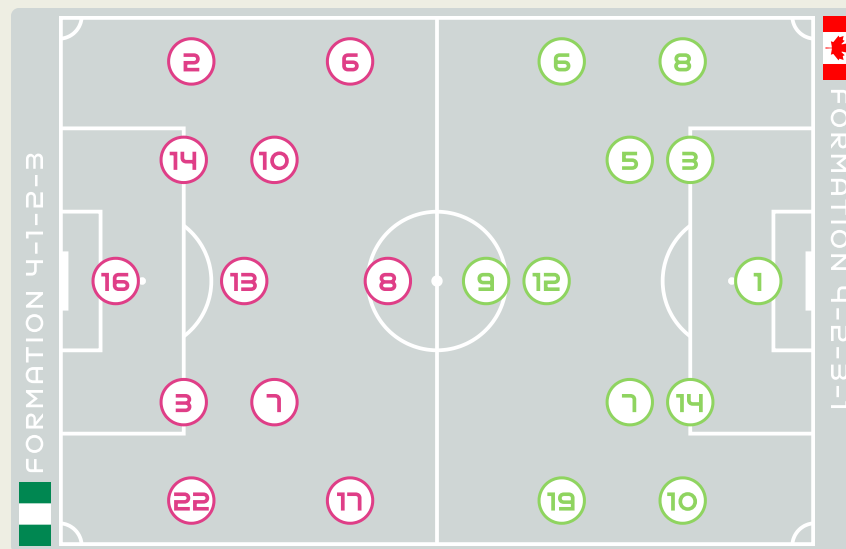


## STARTING

16	GK	NNADOZIE Chiamaka (C)	
2	DF	PLUMPTRE Ashleigh	
3	DF	OHALE Osinachi	
6	FW	ONUMONU Ifeoma	↓ 85'
7	MF	PAYNE Toni	
8	FW	OSHOALA Asisat	↓ 90+1'
10	MF	UCHEIBE Christy	
13	MF	ABIODUN Deborah	96'
14	DF	DEMEHIN Blessing	53'
17	FW	ORDEGA Francisca	↓ 73'
22	DF	ALOZIE Michelle	

## SUBSTITUTES

1	GK	OLUEHI Tochukwu	
23	GK	BALOGUN Zainab	
4	DF	OGBONNA Glory	
5	DF	EBI Onome	
9	FW	OPARANOZIE Desire	
11	FW	MONDAY Gift	
12	FW	KANU Uchenna	↑ 73'
19	MF	ECHEGINI Jennifer	↑ 90+1'
20	DF	IMURAN Rofiat	
21	FW	OKORONKWO Esther	↑ 85'



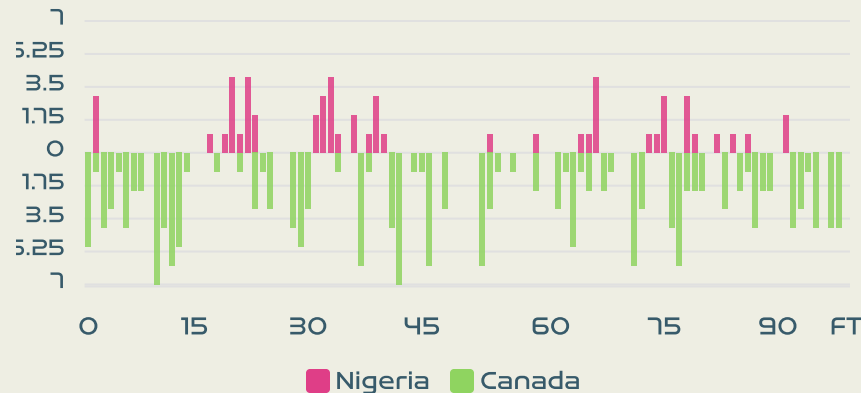
## STARTING

SHERIDAN Kailen	GK	1	
BUCHANAN Kadeisha	DF	3	
QUINN	MF	5	
↓ 46'	ROSE Deanne	FW	6
↓ 82'	GROSSO Julia	MF	7
↓ 71'	RIVIERE Jayde	DF	8
	HUITEMA Jordyn	FW	9
74'	LAWRENCE Ashley	DF	10
↓ 71'	(C) SINCLAIR Christine	FW	12
	GILLES Vanessa	DF	14
↓ 64'	LEON Adriana	FW	19

## SUBSTITUTES

DANGELO Sabrina	GK	18		
PROULX Lysianne	GK	22		
↑ 71'	CHAPMAN Allysha	DF	2	
	ZADORSKY Shelina	DF	4	
99'	↑ 64'	VIENS Evelyne	FW	11
↑ 71'	SCHMIDT Sophie	MF	13	
↑ 82'	PRINCE Nichelle	FW	15	
	CARLE Gabrielle	DF	16	
	FLEMING Jessie	MF	17	
↑ 46'	LACASSE Cloe	FW	20	
	AWUJO Simi	MF	21	
	SMITH Olivia	FW	23	

Distribution in the Final Third



# Match Summary - Key Statistics



## Possession



**Total**

**Total**

0	Goals	0
10 (1)	Attempts at Goal (On Target)	14 (2)
221 (125)	Total Passes (Complete)	459 (384)
57 %	Pass Completion %	84 %
42	Completed Line Breaks	84
4	Defensive Line Breaks	7
55	Receptions in the Final Third	153
11	Crosses	26
16	Ball Progressions	24
212 (55)	Defensive Pressures Applied (Direct Pressures)	141 (46)
84	Forced Turnovers	79
75	Second Balls	89
97 km	Total Distance Covered	99.9 km
4.2 km	Zone 4 - Low Speed Sprinting: 19-23km/h	4.8 km



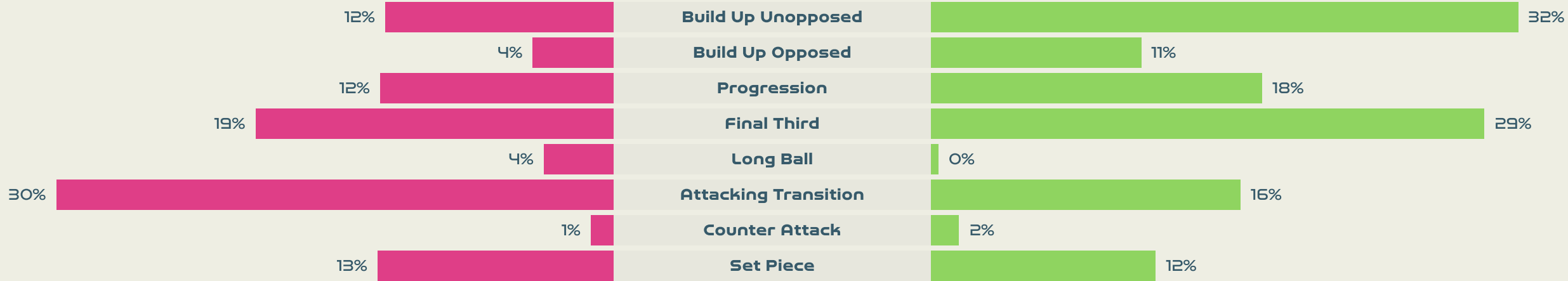
Nigeria

## Phases of Play

Canada



### IN POSSESSION



### OUT OF POSSESSION





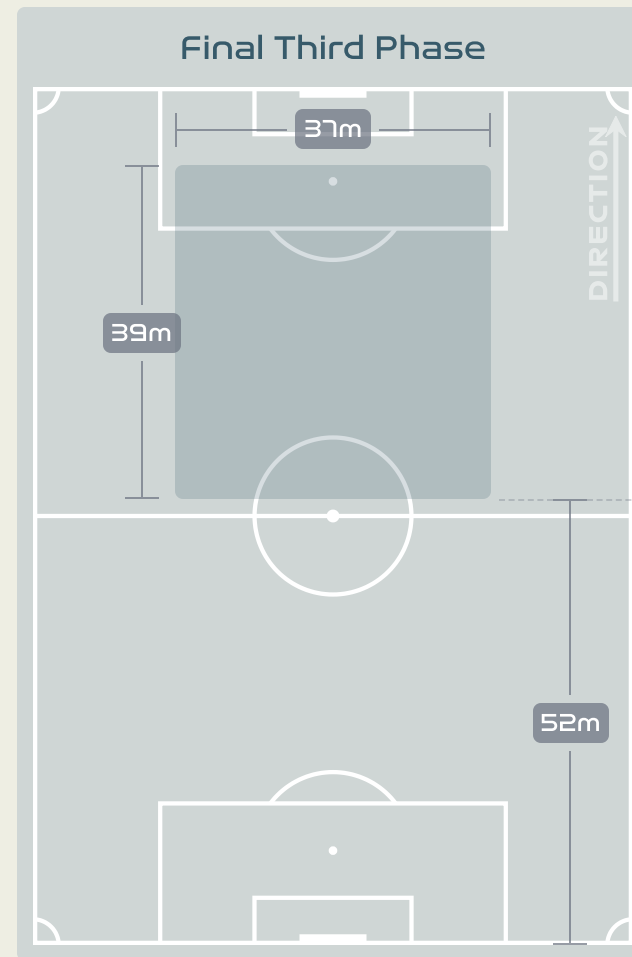
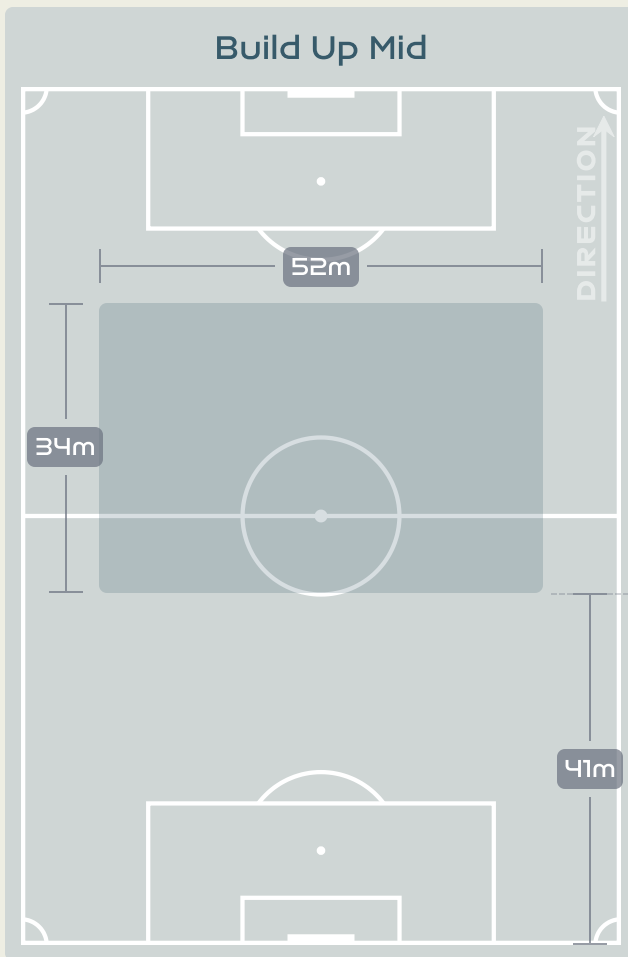
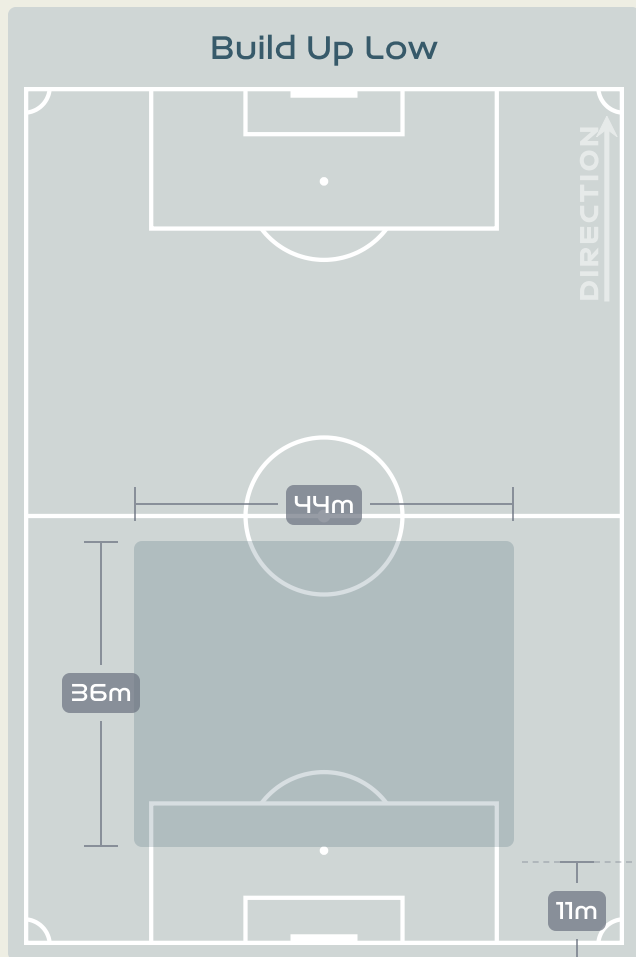
# IN POSSESSION



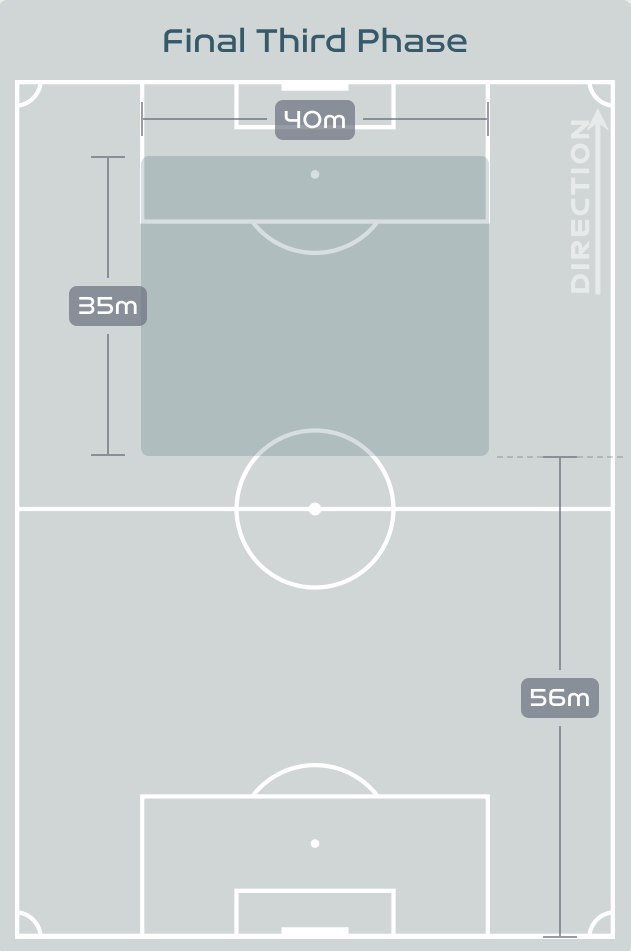
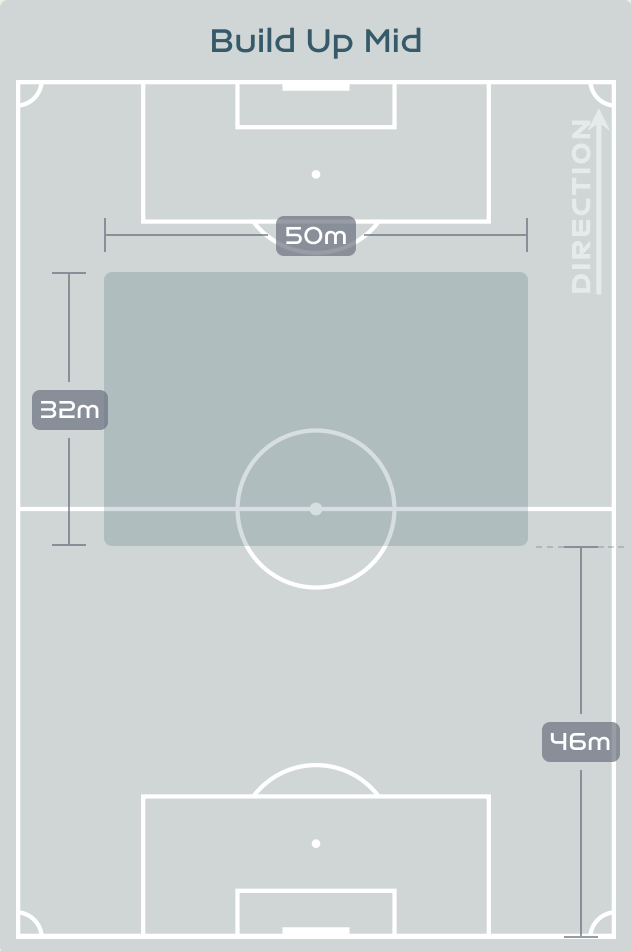
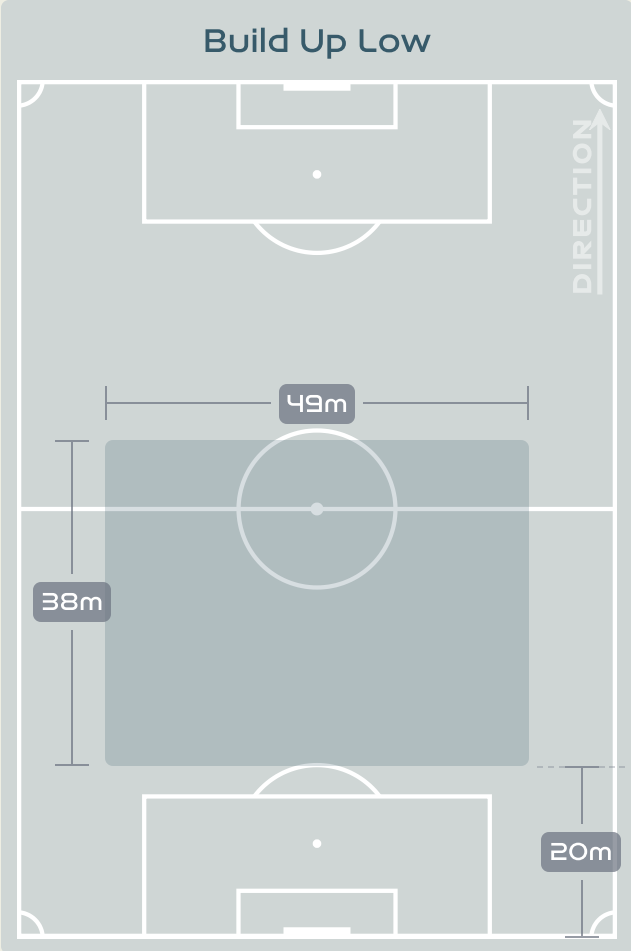
Nigeria v Canada



# In Possession Line Height & Team Length



# In Possession Line Height & Team Length



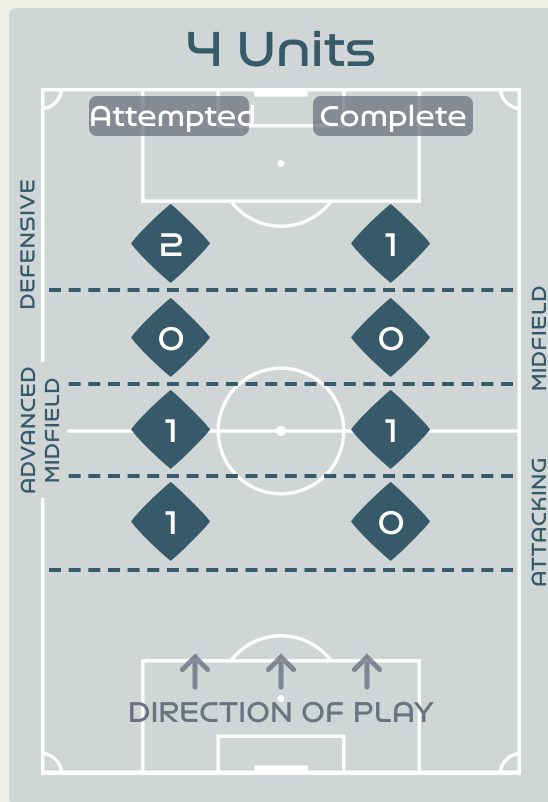
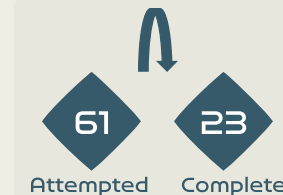
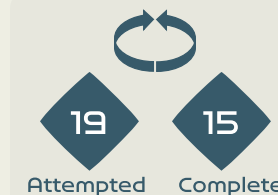
# Line Breaks



**Nigeria**

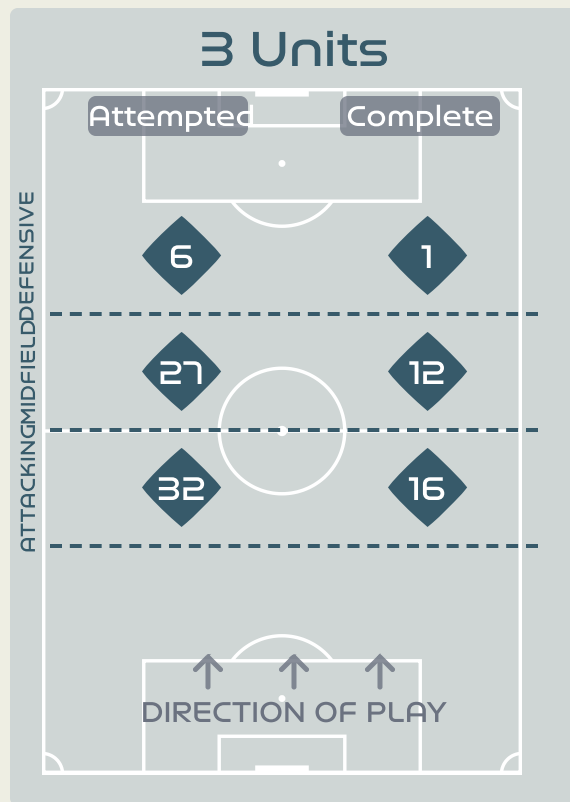
Attempted Line Breaks

**94**



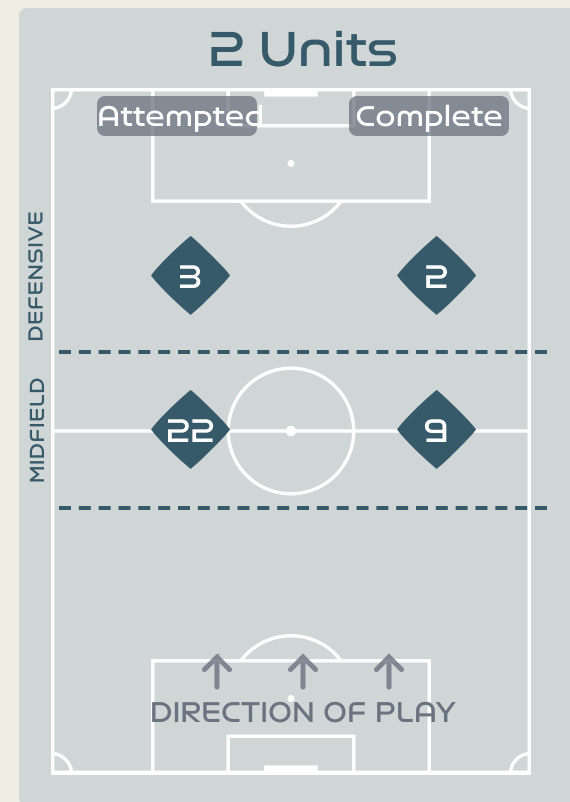
Attempted Line Breaks **4**

Inside Shape                    **2**  
 Outside Shape                   **2**



Attempted Line Breaks **65**

Inside Shape                    **41**  
 Outside Shape                   **24**



Attempted Line Breaks **25**

Inside Shape                    **20**  
 Outside Shape                   **5**



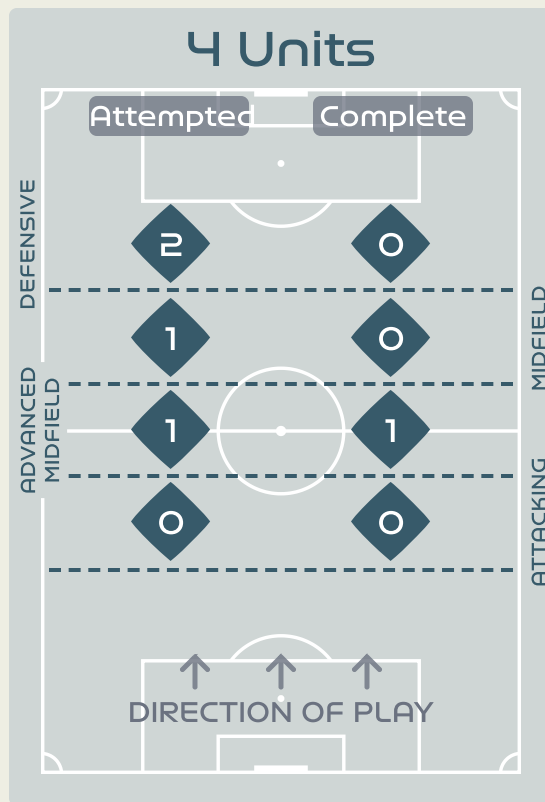
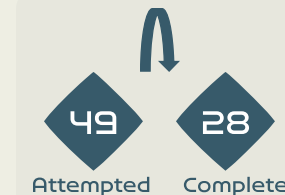
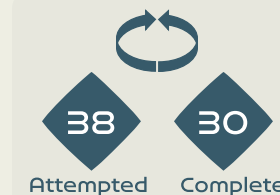
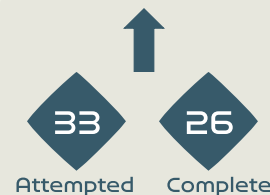
# Line Breaks



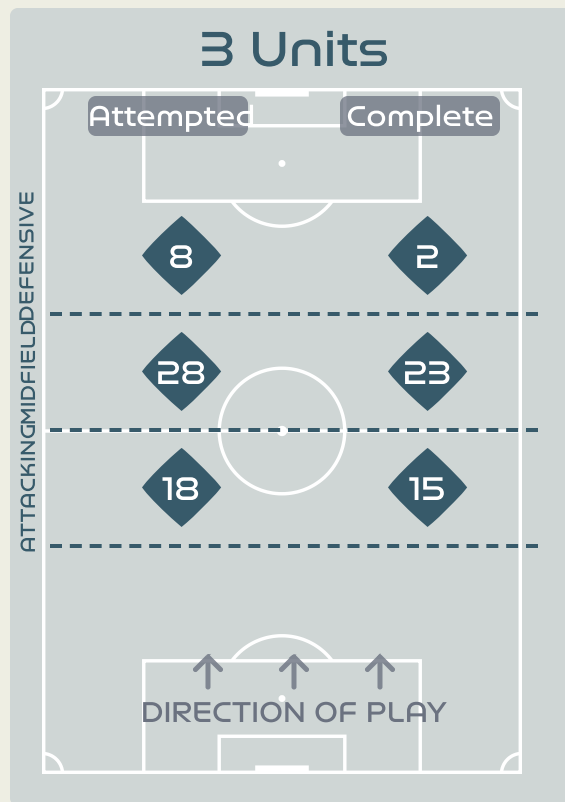
Canada

Attempted Line Breaks

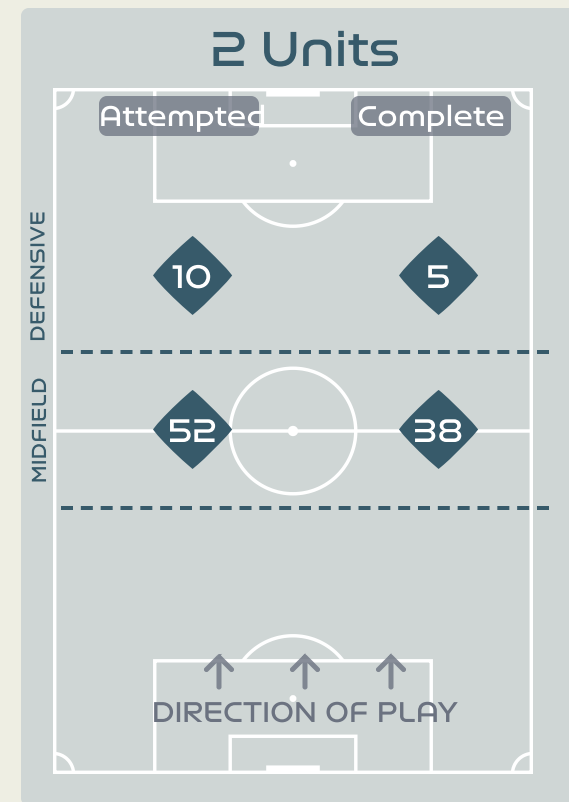
120



Attempted Line Breaks 4  
 Inside Shape 4  
 Outside Shape 0



Attempted Line Breaks 54  
 Inside Shape 34  
 Outside Shape 20



Attempted Line Breaks 62  
 Inside Shape 39  
 Outside Shape 23



## Line Breaks



					4 Units				3 Units			2 Units		Direction			Distribution Type		
#	Player	Line Breaks Attempted	Line Breaks Completed	Line Break Completion %	Attacking Line	Attacking Midfield Line	Midfield Line	Defensive Line	Attacking Line	Midfield Line	Defensive Line	Midfield Line	Defensive Line	Through	Around	Over	Pass	Cross	Ball Progression
1	SHERIDAN Kailen	4	2	50%	0	0	0	0	1	0	0	3	0	0	0	4	4	0	0
3	BUCHANAN Kadeisha	12	8	66%	0	0	0	0	3	1	1	7	0	5	2	5	12	0	0
5	QUINN	15	11	73%	0	0	0	0	3	3	2	6	1	4	4	7	14	1	0
6	ROSE Deanne	2	1	50%	0	1	0	0	0	0	0	0	1	1	1	0	1	0	1
7	GROSSO Julia	10	8	80%	0	0	0	0	3	3	0	4	0	4	6	0	10	0	0
8	RIVIERE Jayde	11	8	72%	0	0	0	0	1	3	1	6	0	3	2	6	10	1	0
9	HUITEMA Jordyn	8	4	50%	0	0	1	1	0	2	1	1	2	2	4	2	7	0	1
10	LAWRENCE Ashley	13	11	84%	0	0	0	0	0	2	0	10	1	1	4	8	12	0	1
12	SINCLAIR Christine	6	3	50%	0	0	0	0	1	2	1	2	0	2	2	2	5	0	1
14	GILLES Vanessa	17	14	82%	0	0	0	0	6	3	0	6	2	5	8	4	17	0	0
19	LEON Adriana	7	2	28%	0	0	0	1	0	2	1	2	1	2	2	3	3	4	0
2	CHAPMAN Allysha	5	4	80%	0	0	0	0	0	1	0	4	0	1	0	4	4	1	0
11	VIENS Evelyne	1	1	100%	0	0	0	0	0	1	0	0	0	1	0	0	1	0	0
13	SCHMIDT Sophie	6	5	83%	0	0	0	0	0	3	0	1	2	2	2	2	5	1	0
15	PRINCE Nichelle	0	0	0%	0	0	0	0	0	0	0	0	0	0	0	0	0	0	0
20	LACASSE Cloe	3	2	66%	0	0	0	0	0	2	1	0	0	0	1	2	2	1	0

# Passing Networks



#	Passes From ↓ to →	NNADOZIE Chiamaka	PLUMPTRE Ashleigh	OHALE Osinachi	ONUMONU Ifeoma	PAYNE Toni	OSHOALA Asisat	UCHEIBE Christy	ABIODUN Deborah	DEMEHIN Blessing	ORDEGA Francisca	ALOZIE Michelle	KANU Uchenna	ECHEGINI Jennifer	OKORONKWO Esther
16	NNADOZIE Chiamaka		4	0	0	0	1	0	1	0	1	0	0	0	0
2	PLUMPTRE Ashleigh	1		0	7	1	0	0	2	0	1	0	3	0	0
3	OHALE Osinachi	1	0		1	1	1	0	0	1	0	2	0	0	0
6	ONUMONU Ifeoma	0	3	0		0	3	2	4	0	0	2	0	0	0
7	PAYNE Toni	0	2	0	4		0	1	0	0	1	2	1	0	0
8	OSHOALA Asisat	0	1	0	0	1		1	2	0	0	1	0	0	0
10	UCHEIBE Christy	1	0	1	1	0	0		1	1	0	1	1	0	0
13	ABIODUN Deborah	0	3	2	3	3	0	1		1	0	0	0	1	0
14	DEMEHIN Blessing	1	2	0	0	0	0	0	0		0	0	0	0	0
17	ORDEGA Francisca	0	0	1	0	1	0	0	1	0		1	0	0	0
22	ALOZIE Michelle	1	0	1	0	1	0	0	1	0	1		0	0	0
12	KANU Uchenna	0	1	0	0	0	0	1	0	1	0	0		0	0
19	ECHEGINI Jennifer	0	1	0	0	0	0	0	0	0	0	0	2		0
21	OKORONKWO Esther	0	1	1	0	0	0	0	0	0	0	0	0	1	

Top 5 Player to Player Passers		
Player	Passed To	% of Total Team Passes
PLUMPTRE Ashleigh	ONUMONU Ifeoma	6.9%
NNADOZIE Chiamaka	PLUMPTRE Ashleigh	3.9%
ONUMONU Ifeoma	ABIODUN Deborah	3.9%
PAYNE Toni	ONUMONU Ifeoma	3.9%
PLUMPTRE Ashleigh	KANU Uchenna	2.9%

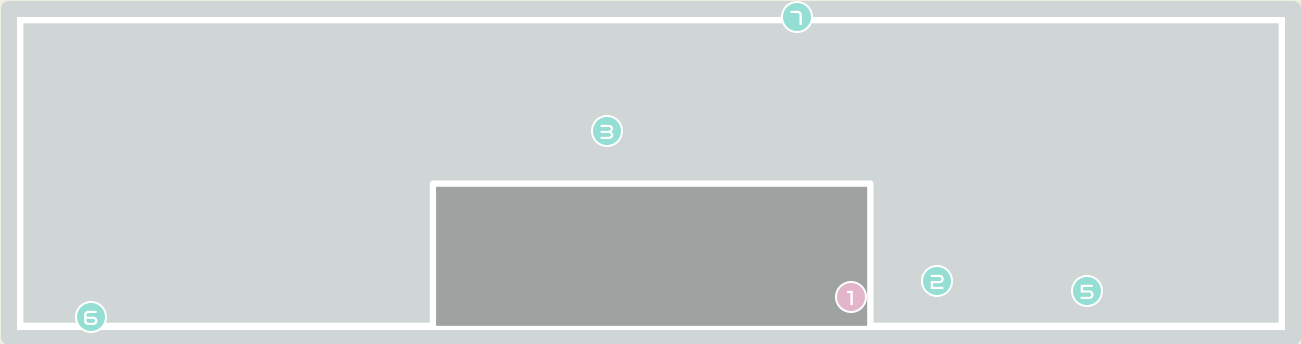
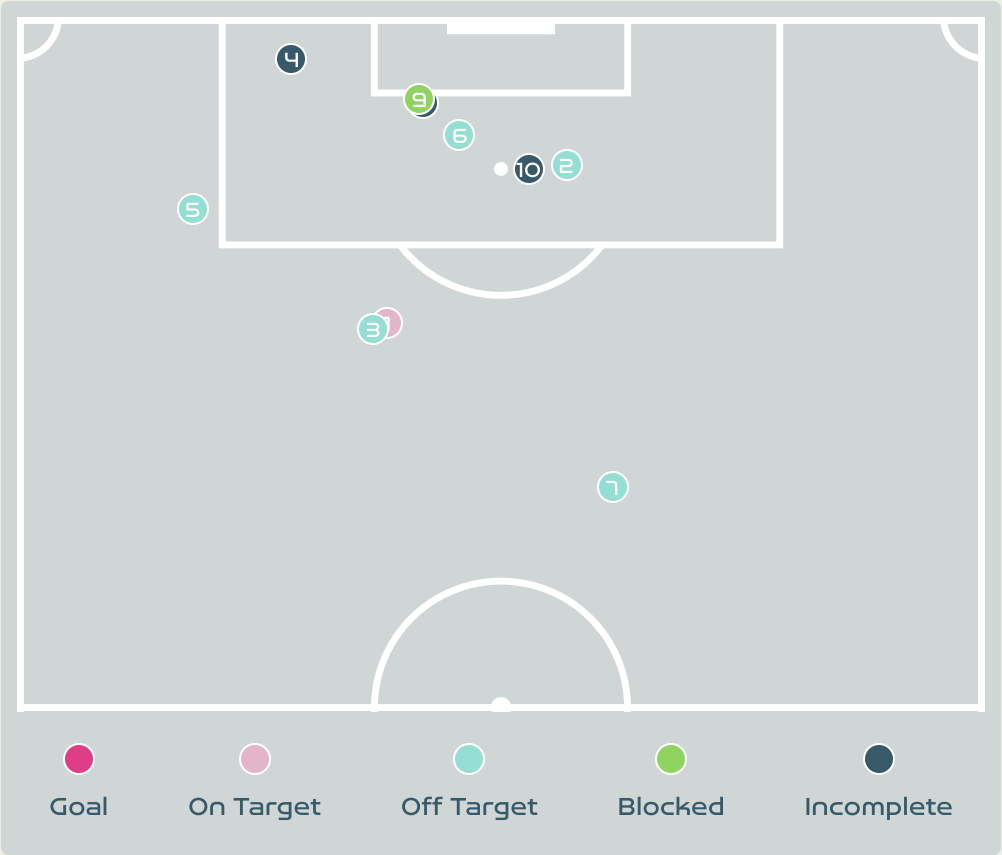
# Passing Networks



#	Passes From ↓ to →	SHERIDAN Kailen	BUCHANAN Kadeisha	QUINN	ROSE Deanne	GROSSO Julia	RIVIERE Jayde	HUITEMA Jordyn	LAWRENCE Ashley	SINCLAIR Christine	GILLES Vanessa	LEON Adriana	CHAPMAN Allysha	VIENS Evelyne	SCHMIDT Sophie	PRINCE Nichelle	LACASSE Cloe
1	SHERIDAN Kailen		9	1	0	0	0	1	1	0	3	0	0	0	0	0	0
3	BUCHANAN Kadeisha	2		13	4	1	9	1	4	4	23	0	0	0	0	0	2
5	QUINN	0	11		0	6	6	4	2	2	8	1	2	0	4	1	1
6	ROSE Deanne	0	0	0		0	0	0	0	3	0	0	0	0	0	0	0
7	GROSSO Julia	0	6	4	0		0	1	6	2	6	3	0	2	1	0	0
8	RIVIERE Jayde	1	7	5	1	1		1	0	2	1	0	0	0	0	0	3
9	HUITEMA Jordyn	0	1	0	1	1	0		3	3	0	0	1	0	0	0	2
10	LAWRENCE Ashley	0	2	6	0	6	0	2		1	9	3	0	0	0	0	2
12	SINCLAIR Christine	0	1	2	3	0	4	2	2		1	1	0	0	0	0	0
14	GILLES Vanessa	2	24	8	0	8	1	3	12	2		4	1	1	2	0	0
19	LEON Adriana	0	0	0	0	2	1	0	2	1	4		0	0	0	0	0
2	CHAPMAN Allysha	0	0	0	0	0	0	1	1	0	2	0		1	0	1	0
11	VIENS Evelyne	0	0	0	0	1	0	0	1	0	1	0	0		1	0	1
13	SCHMIDT Sophie	0	1	0	0	1	0	1	1	0	1	0	3	0		0	2
15	PRINCE Nichelle	0	0	1	0	0	0	0	0	0	0	0	0	1	0		0
20	LACASSE Cloe	0	0	2	0	1	2	2	2	1	0	0	0	0	0	0	

Top 5 Player to Player Passers		
Player	Passed To	% of Total Team Passes
GILLES Vanessa	BUCHANAN Kadeisha	6.8%
BUCHANAN Kadeisha	GILLES Vanessa	6.5%
BUCHANAN Kadeisha	QUINN	3.7%
GILLES Vanessa	LAWRENCE Ashley	3.4%
QUINN	BUCHANAN Kadeisha	3.1%

# Attempts at Goal



Key	Outcome	Shots
<span style="color: red;">●</span>	Goals	0
<span style="color: pink;">●</span>	On Target	1
<span style="color: teal;">●</span>	Off Target	5
<span style="color: green;">●</span>	Blocked	1
<span style="color: darkblue;">●</span>	Incomplete	3

Nigeria

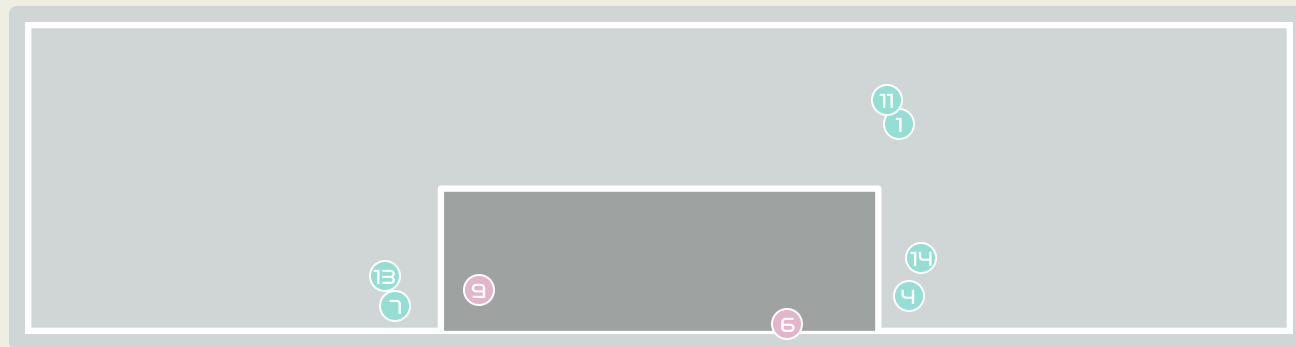
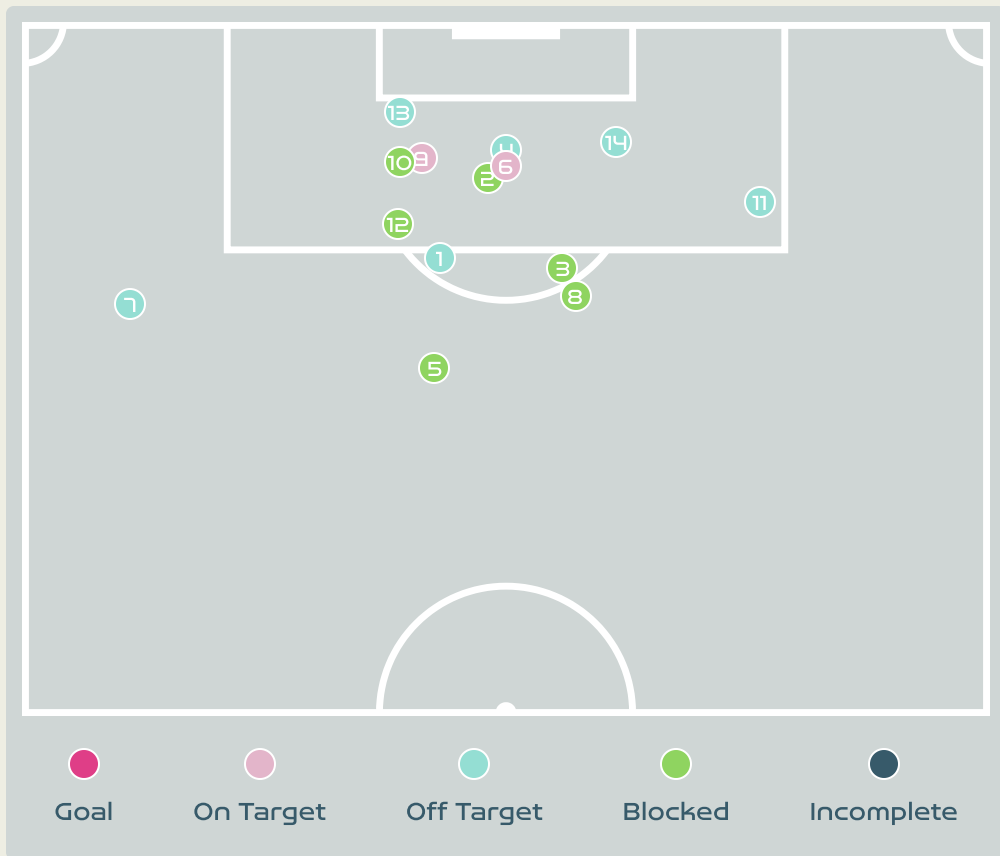


## Attempts at Goal

Time	Player	Outcome	Body Part	Delivery Type
22	6 ONUMONU Ifeoma	On Target - Saved	Right Foot	Pass
32	6 ONUMONU Ifeoma	Deflected Off Target - Defensive Event	Head	Cross
33	13 ABIODUN Deborah	Off Target	Right Foot	Loose Ball
34	8 OSHOALA Asisat	Incomplete - Player On Ball Error	Right Foot	Pass
39	7 PAYNE Toni	Deflected Off Target - Defensive Event	Right Foot	Pass
40	8 OSHOALA Asisat	Off Target	Head	Corner
66	10 UCHEIBE Christy	Off Target	Right Foot	Loose Ball
74	22 ALOZIE Michelle	Incomplete	Left Foot	Other
74	22 ALOZIE Michelle	Incomplete - Blocked	Right Foot	Loose Ball
75	6 ONUMONU Ifeoma	Incomplete - Player On Ball Error	Right Foot	Pass



# Attempts at Goal



Key	Outcome	Shots
<span style="color: red;">●</span>	Goals	0
<span style="color: pink;">●</span>	On Target	2
<span style="color: cyan;">●</span>	Off Target	6
<span style="color: green;">●</span>	Blocked	6
<span style="color: darkblue;">●</span>	Incomplete	0

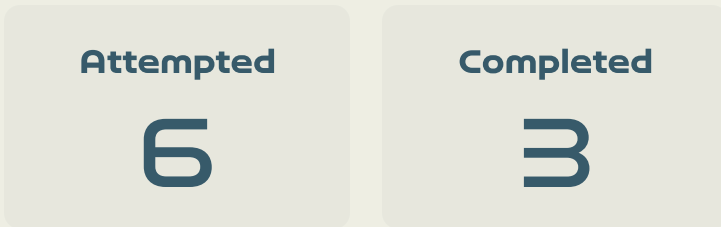
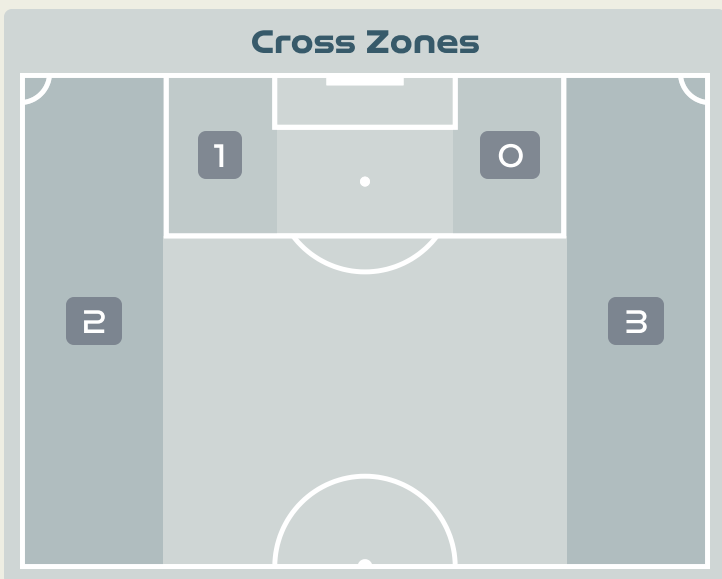
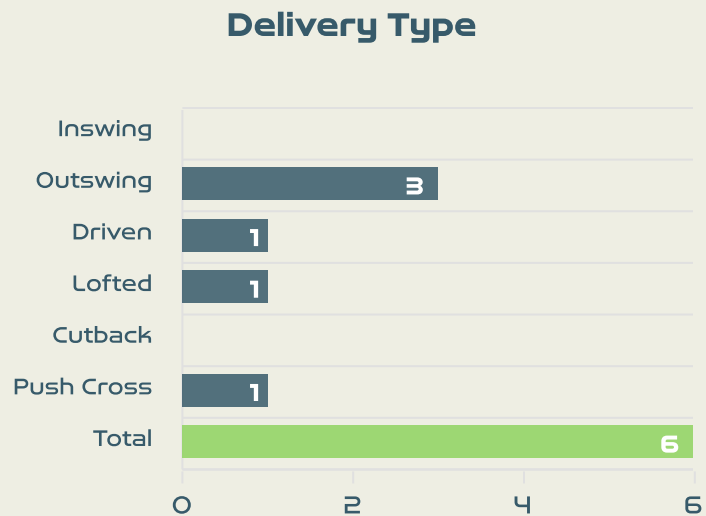
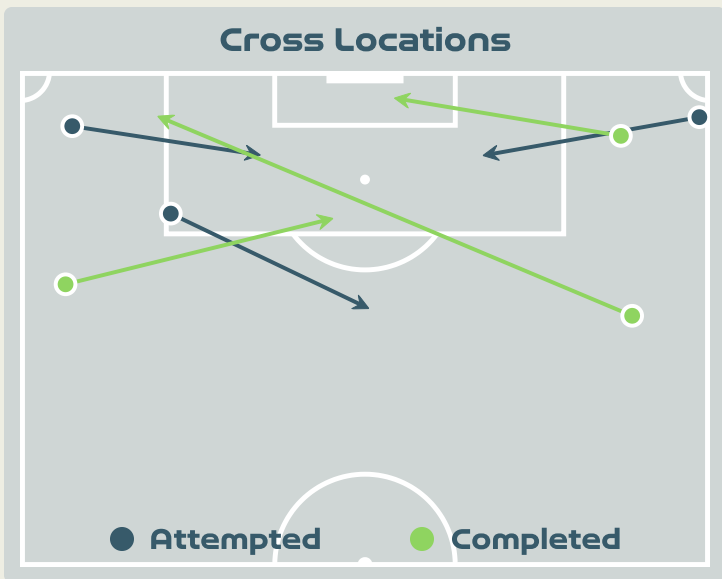




## Attempts at Goal

Time	Player	Outcome	Body Part	Delivery Type
8	12 SINCLAIR Christine	Off Target	Right Foot	Pass
14	3 BUCHANAN Kadeisha	Incomplete - Blocked	Right Foot	Loose Ball
14	5 QUINN	Incomplete - Blocked	Right Foot	Loose Ball
28	9 HUITEMA Jordyn	Off Target	Head	Cross
31	7 GROSSO Julia	Incomplete - Blocked	Left Foot	Pass
49	12 SINCLAIR Christine	On Target - Saved	Right Foot	Penalty
56	19 LEON Adriana	Off Target	Right Foot	Freekick
65	20 LACASSE Cloe	Incomplete - Blocked	Left Foot	Pass
65	11 VIENS Evelyne	On Target - Saved	Right Foot	Other
71	9 HUITEMA Jordyn	Incomplete - Blocked	Left Foot	Cross
76	7 GROSSO Julia	Deflected Off Target - Defensive Event	Left Foot	Pass
83	11 VIENS Evelyne	Incomplete - Blocked	Right Foot	Pass
86	9 HUITEMA Jordyn	Off Target - Saved	Head	Corner
89	9 HUITEMA Jordyn	Off Target	Head	Cross

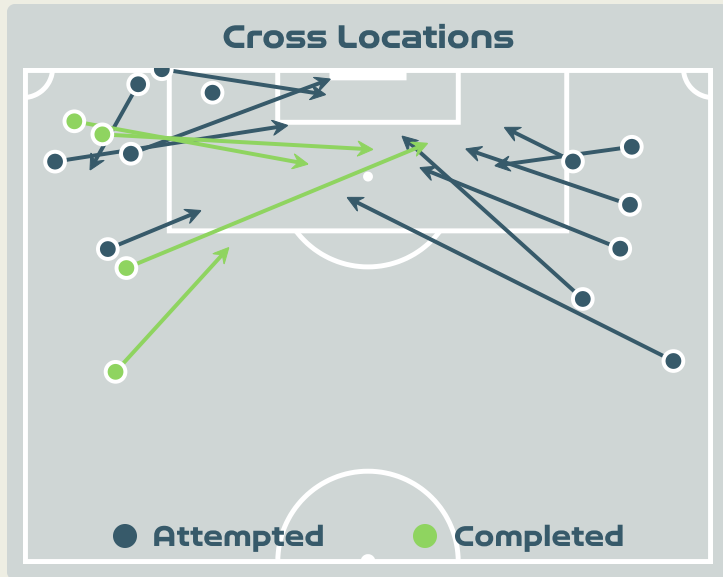
# Crosses (Open Play)



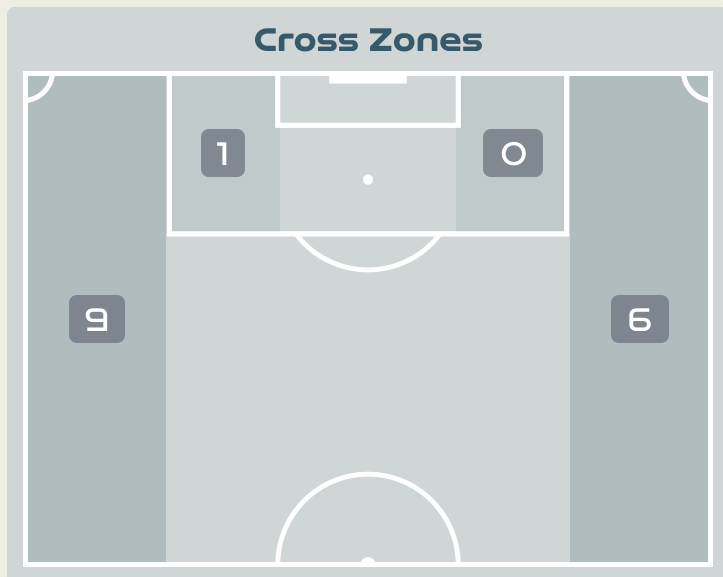
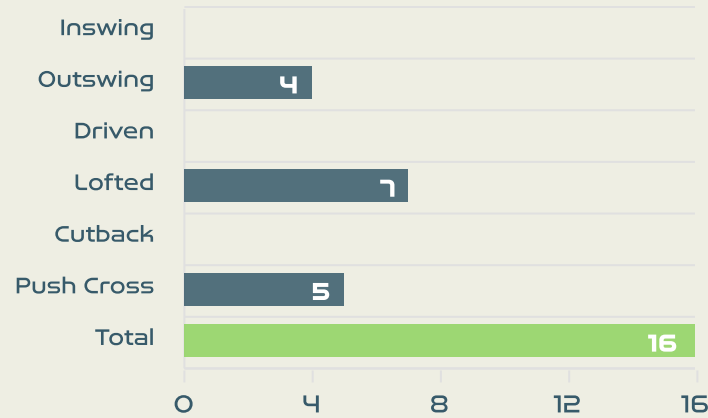
#	Player	Inswing	Outswing	Driven	Lofted	Cutback	Push Cross	Total Attempted
16	NNADOZIE Chiamaka	0	0	0	0	0	0	0
2	PLUMPTRE Ashleigh	0	0	1	0	0	0	1
3	OHALE Osinachi	0	0	0	0	0	0	0
6	ONUMONU Ifeoma	0	0	0	0	0	0	0
7	PAYNE Toni	0	0	0	0	0	0	0
8	OSHOALA Asisat	0	0	0	0	0	0	0
10	UCHEIBE Christy	0	2	0	0	0	0	2
13	ABIODUN Deborah	0	0	0	0	0	0	0
14	DEMEHIN Blessing	0	0	0	0	0	0	0
17	ORDEGA Francisca	0	0	0	1	0	1	2
22	ALOZIE Michelle	0	1	0	0	0	0	1
12	KANU Uchenna	0	0	0	0	0	0	0
19	ECHEGINI Jennifer	0	0	0	0	0	0	0
21	OKORONKWO Esther	0	0	0	0	0	0	0



# Crosses (Open Play)



### Delivery Type



Attempted

16

Completed

4

Most Crosses Attempted

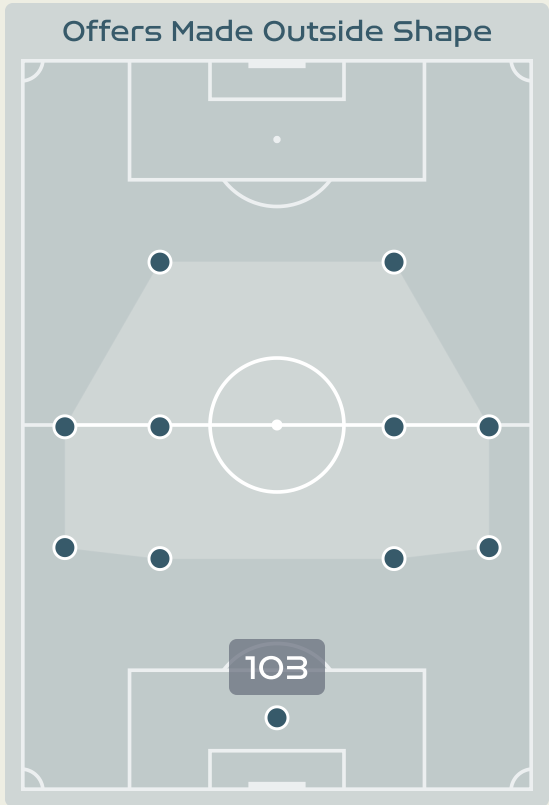
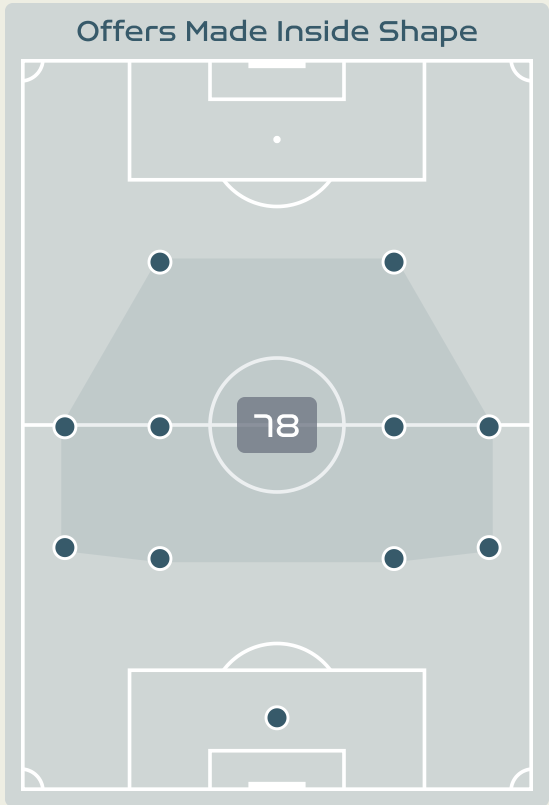
3

**HUITEMA Jordyn**  
CENTRE FORWARD

#	Player	Inswing	Outswing	Driven	Lofted	Cutback	Push Cross	Total Attempted
1	SHERIDAN Kailen	0	0	0	0	0	0	0
3	BUCHANAN Kadeisha	0	0	0	0	0	0	0
5	QUINN	0	0	0	1	0	0	1
6	ROSE Deanne	0	1	0	0	0	0	1
7	GROSSO Julia	0	0	0	0	0	0	0
8	RIVIERE Jayde	0	0	0	1	0	0	1
9	HUITEMA Jordyn	0	1	0	0	0	2	3
10	LAWRENCE Ashley	0	0	0	2	0	0	2
12	SINCLAIR Christine	0	1	0	0	0	0	1
14	GILLES Vanessa	0	0	0	0	0	0	0
19	LEON Adriana	0	0	0	1	0	2	3
2	CHAPMAN Allysha	0	1	0	0	0	1	2
11	VIENS Evelyne	0	0	0	0	0	0	0
13	SCHMIDT Sophie	0	0	0	1	0	0	1
15	PRINCE Nichelle	0	0	0	0	0	0	0
20	LACASSE Cloe	0	0	0	1	0	0	1



# Offering to Receive



#	Player	Offers Made	Offers Received	% Made & Received
16	NNADOZIE Chiamaka	0	0	0%
2	PLUMPTRE Ashleigh	27	13	48.1%
3	OHAE Osinachi	0	0	0%
6	ONUMONU Ifeoma	17	8	47.1%
7	PAYNE Toni	39	7	17.9%
8	OSHOALA Asisat	25	3	12%
10	UCHEIBE Christy	12	5	41.7%
13	ABIODUN Deborah	14	9	64.3%
14	DEMEHIN Blessing	0	0	0%
17	ORDEGA Francisca	19	3	15.8%
22	ALOZIE Michelle	13	4	30.8%
12	KANU Uchenna	9	3	33.3%
19	ECHEGINI Jennifer	2	0	0%
21	OKORONKWO Esther	4	0	0%



# Offering to Receive

**415**

**Total Offers Made**

**140**

**Total Offers Received**

**Most Offers**

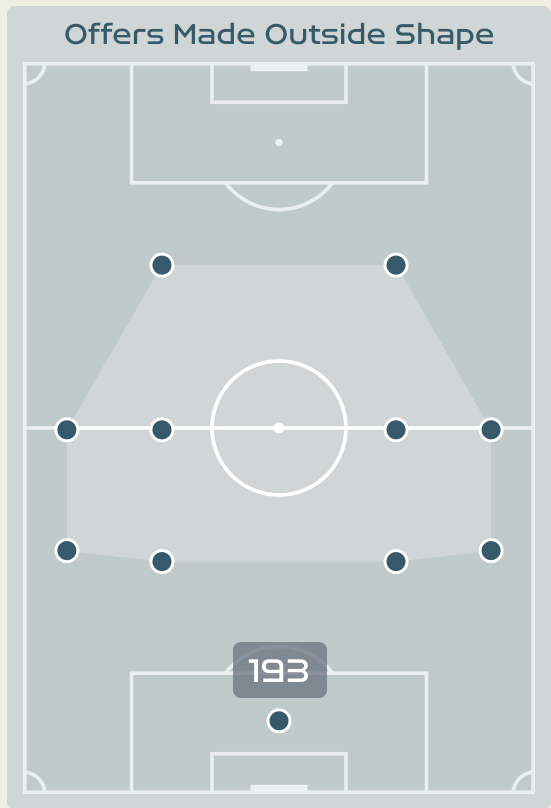
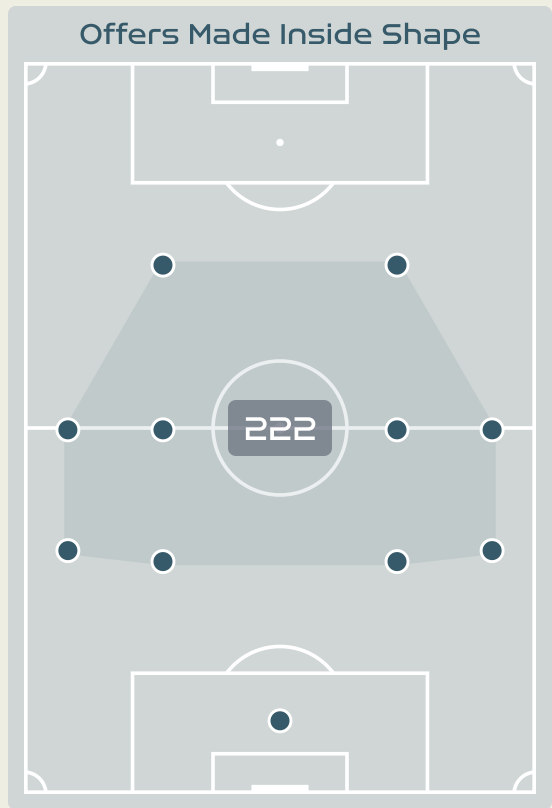
**62**

**QUINN**

DEFENSIVE MIDFIELD CENTRE RIGHT

**220**

**Offers Made in Final Third**



**168**

**Offers Made in Middle Third**

**27**

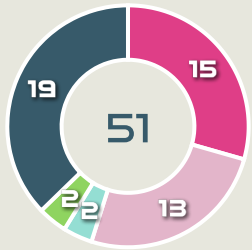
**Offers Made in Defensive Third**

#	Player	Offers Made	Offers Received	% Made & Received
1	SHERIDAN Kailen	5	2	40%
3	BUCHANAN Kadeisha	28	15	53.6%
5	QUINN	62	28	45.2%
6	ROSE Deanne	27	5	18.5%
7	GROSSO Julia	47	18	38.3%
8	RIVIERE Jayde	16	4	25%
9	HUITEMA Jordyn	43	15	34.9%
10	LAWRENCE Ashley	41	13	31.7%
12	SINCLAIR Christine	28	9	32.1%
14	GILLES Vanessa	8	3	37.5%
19	LEON Adriana	32	8	25%
2	CHAPMAN Allysha	5	2	40%
11	VIENS Evelyne	14	4	28.6%
13	SCHMIDT Sophie	15	4	26.7%
15	PRINCE Nichelle	11	2	18.2%
20	LACASSE Cloe	33	8	24.2%

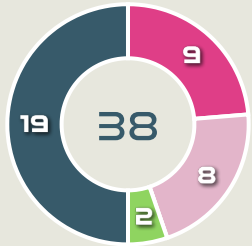
# Movement to Receive

## Movement Types by Phase

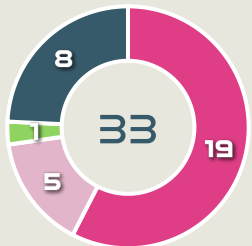
### Final Third Phase



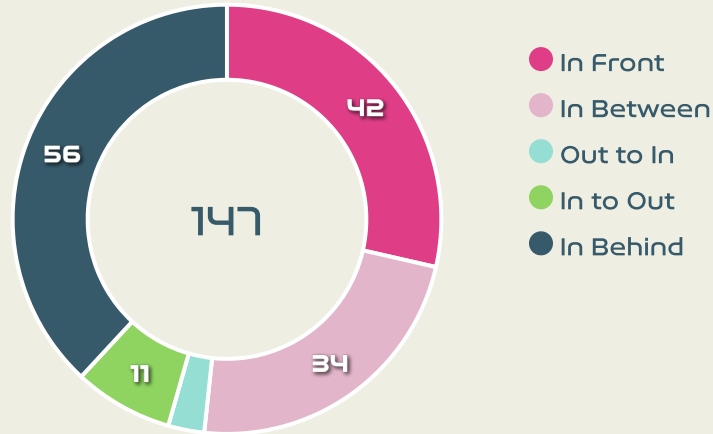
### Progression Phase



### Build Up Phase



## All Movement Types

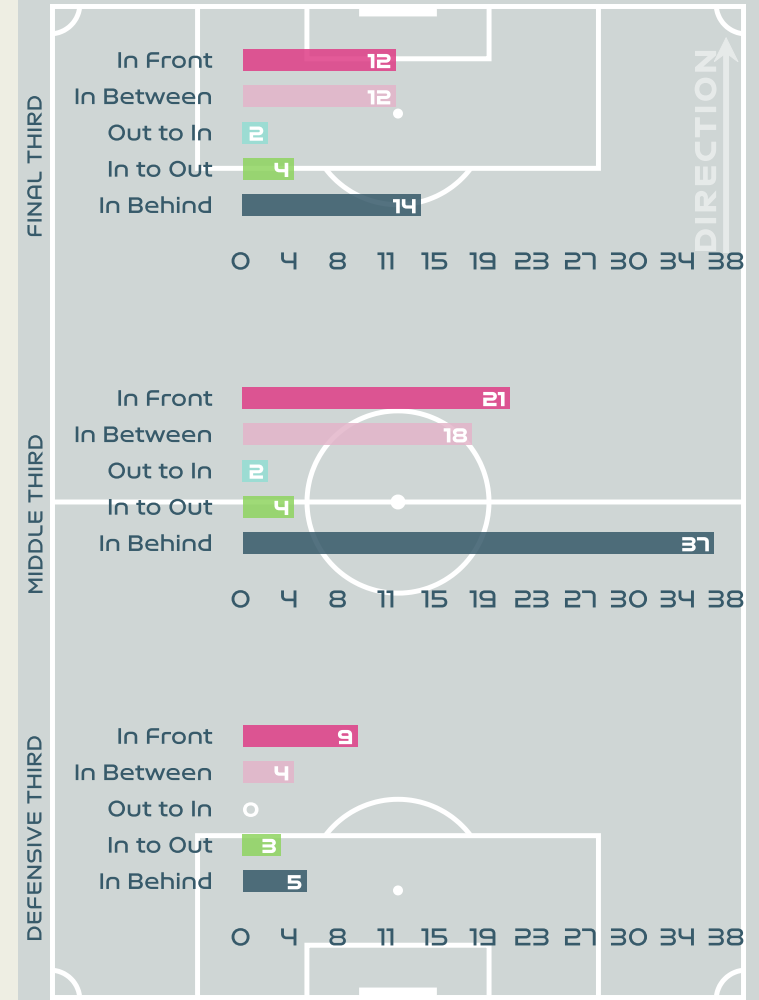


- In Front
- In Between
- Out to In
- In to Out
- In Behind

## Top Ranked Players

Type	Player	Movements
In Front	2 PLUMPTRE Ashleigh	10
In Between	7 PAYNE Toni	11
Out to In	7 PAYNE Toni	2
In to Out	7 PAYNE Toni	3
In Behind	8 OSHOALA Asisat	19

## Movement Types Pitch Third

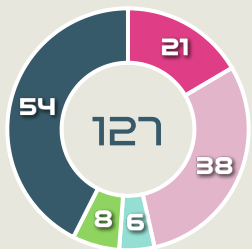




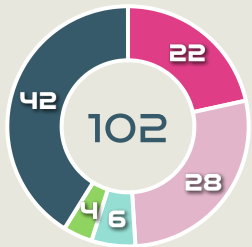
# Movement to Receive

## Movement Types by Phase

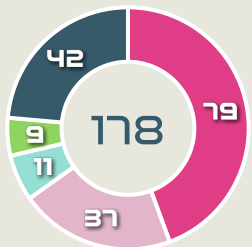
### Final Third Phase



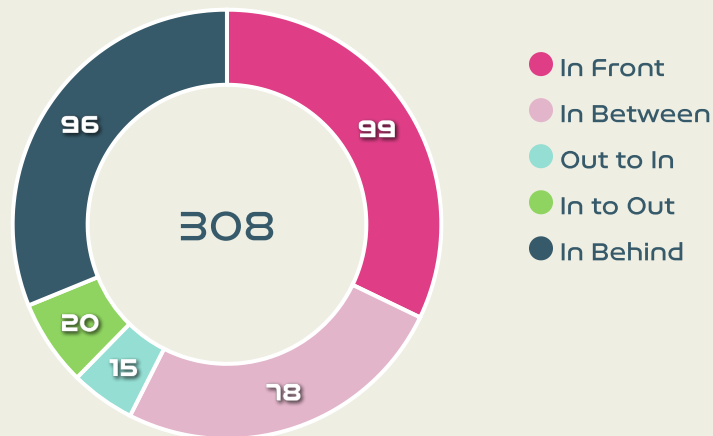
### Progression Phase



### Build Up Phase



## All Movement Types

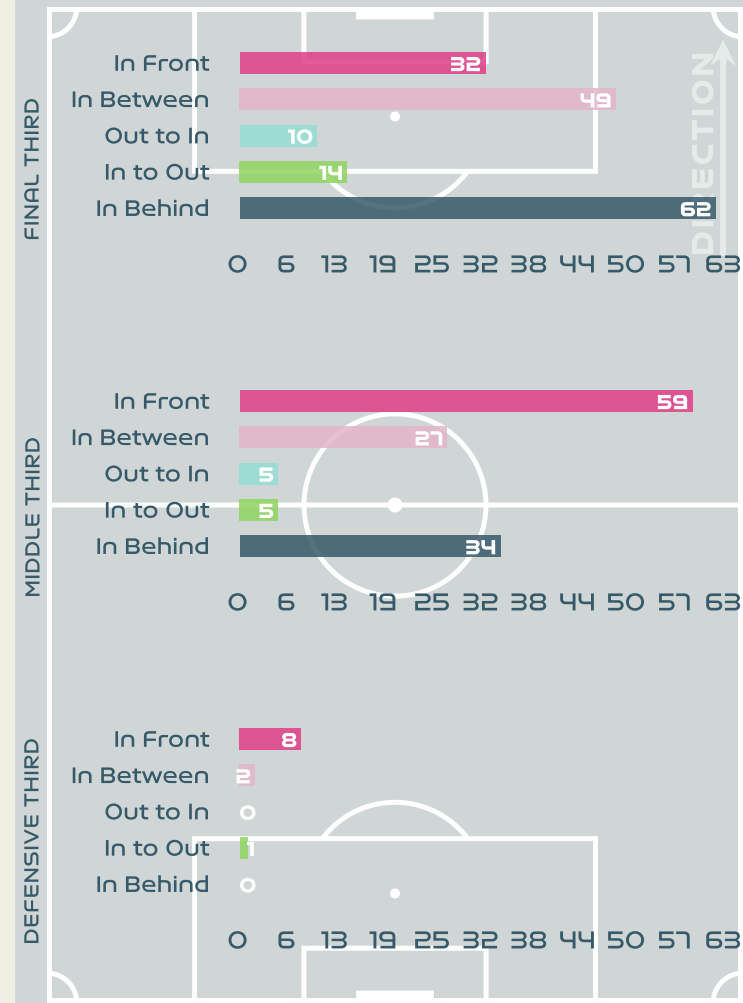


- In Front
- In Between
- Out to In
- In to Out
- In Behind

## Top Ranked Players

Type	Player	Movements
In Front	5 QUINN	41
In Between	9 HUITEMA Jordyn	19
Out to In	19 LEON Adriana	5
In to Out	9 HUITEMA Jordyn	3
In Behind	19 LEON Adriana	18

## Movement Types Pitch Third





# OUT OF POSSESSION



Nigeria v Canada





Nigeria



# Defensive Actions

**84**

Forced Turnovers

**58**

Possession Regained

**7**

Interceptions

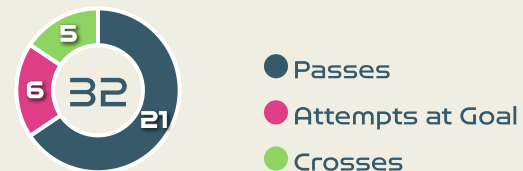
**54**

Tackles

**1.54**

Possession Actions / Defensive Action

## Blocks



## Possession Contests

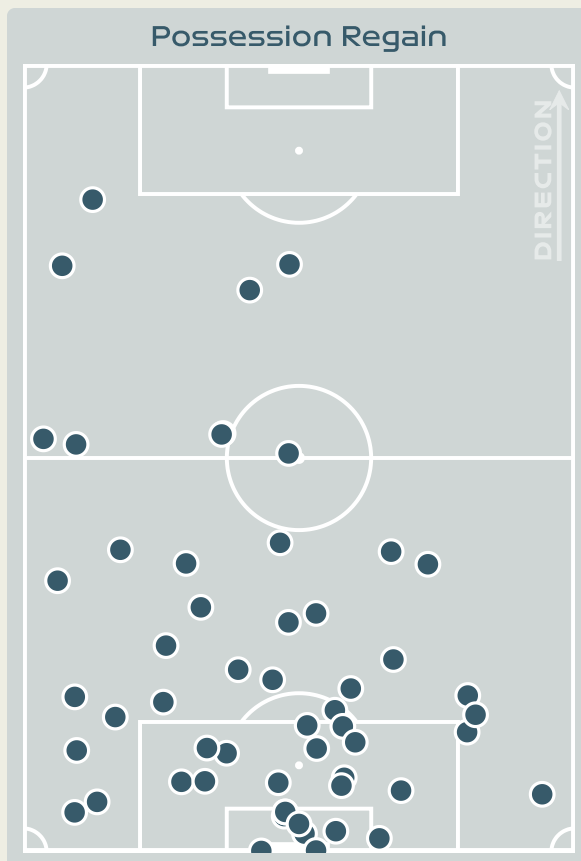
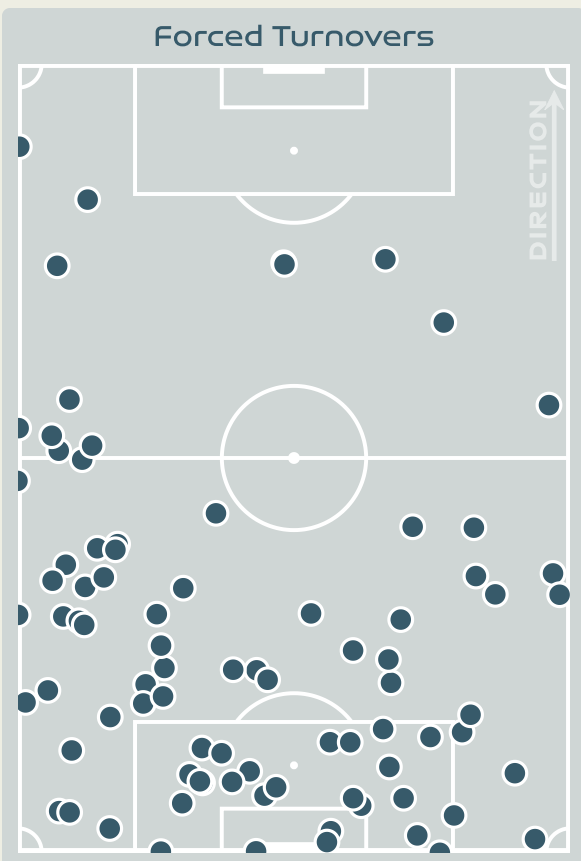


## Most Possession Regains

**13**

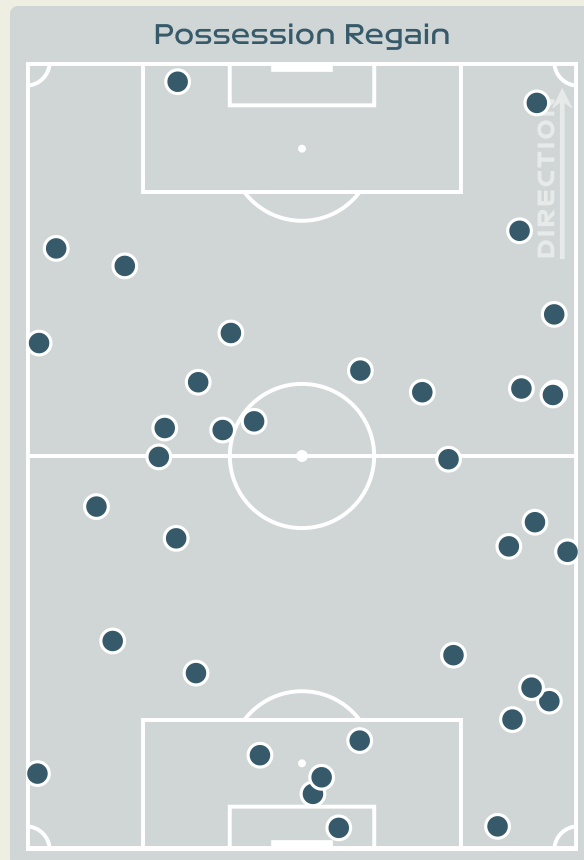
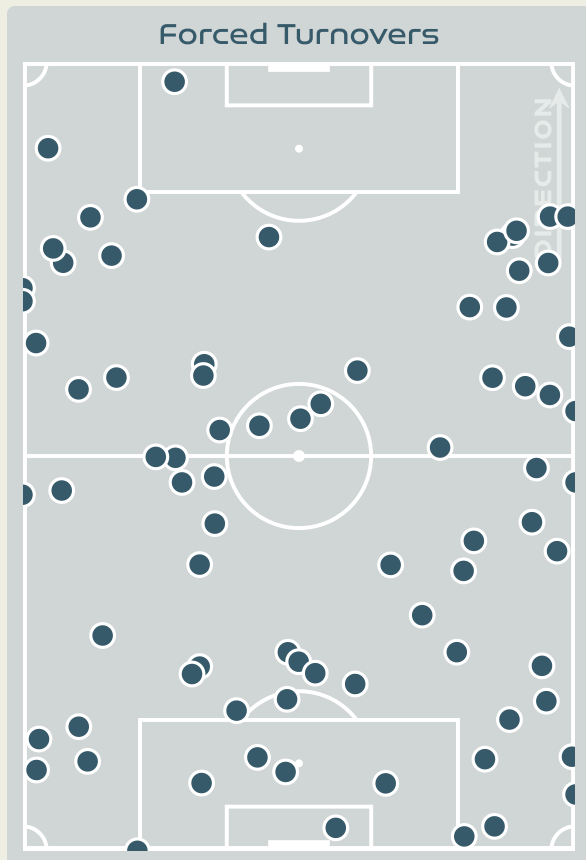
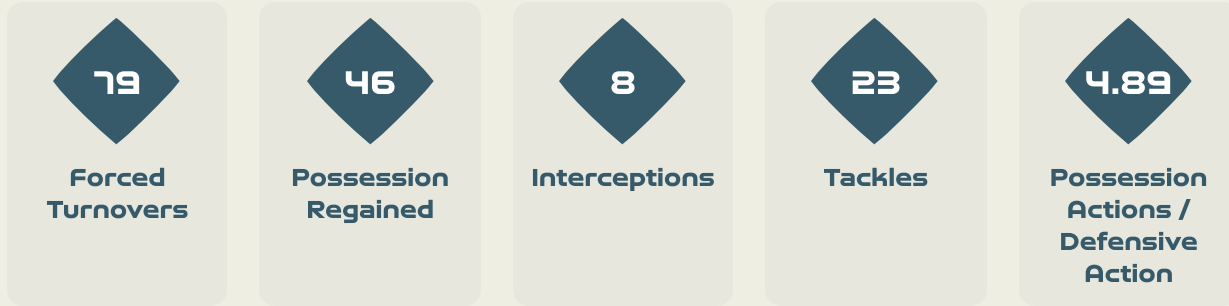
**UCHEIBE Christy**  
LEFT CENTRE MIDFIELD

#	Player	Total Possession Regains
16	NNADOZIE Chiamaka	8
2	PLUMPTRE Ashleigh	8
3	OHALE Osinachi	6
6	ONUMONU Ifeoma	2
7	PAYNE Toni	2
8	OSHOALA Asisat	1
10	UCHEIBE Christy	13
13	ABIODUN Deborah	8
14	DEMEHIN Blessing	6
17	ORDEGA Francisca	1
22	ALOZIE Michelle	3
12	KANU Uchenna	0
19	ECHEGINI Jennifer	0
21	OKORONKWO Esther	0

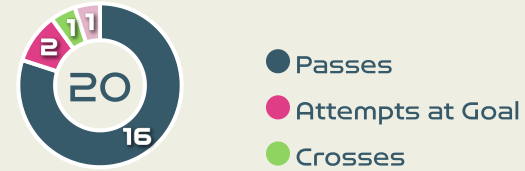




# Defensive Actions



## Blocks



## Possession Contests

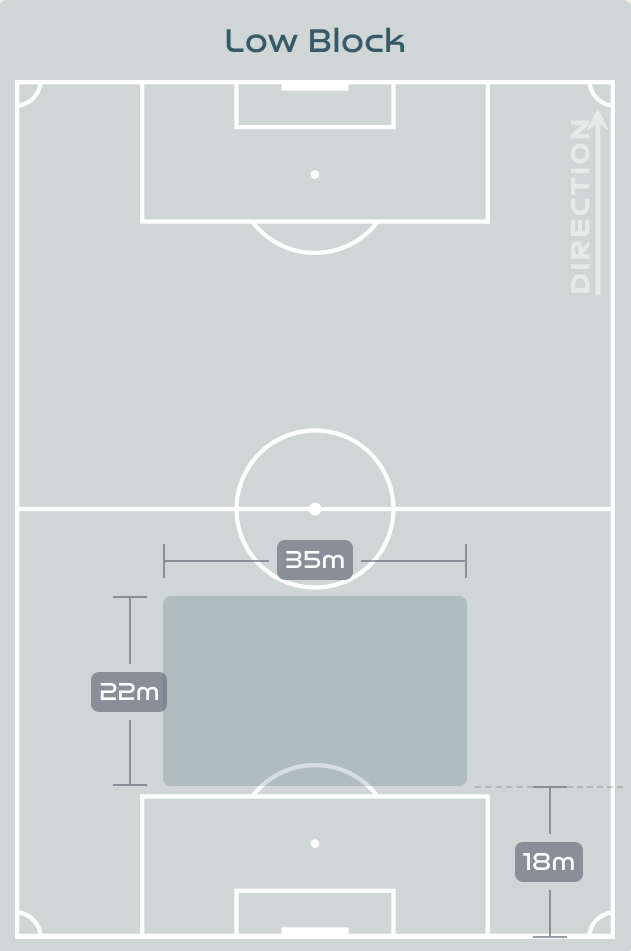
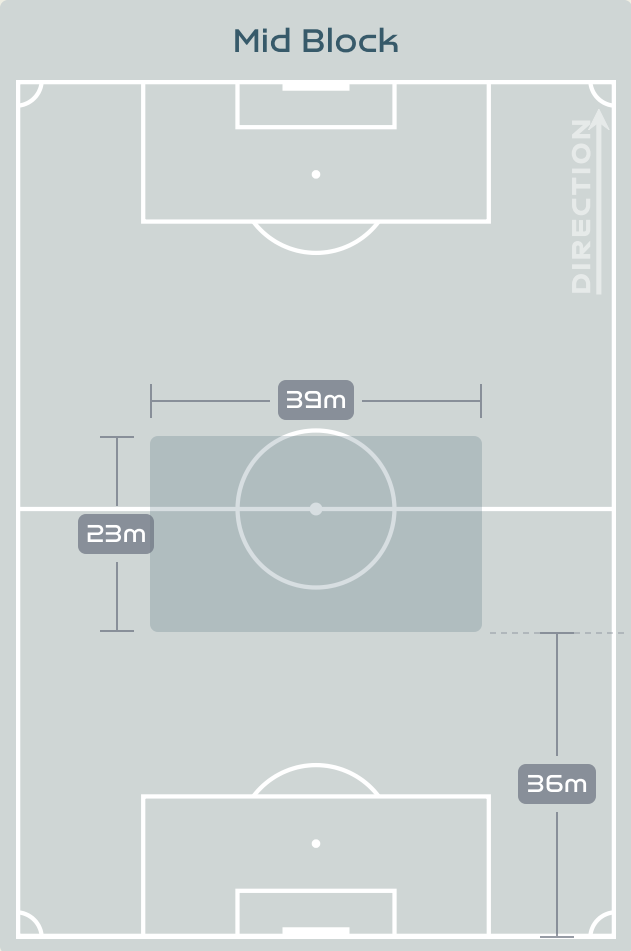
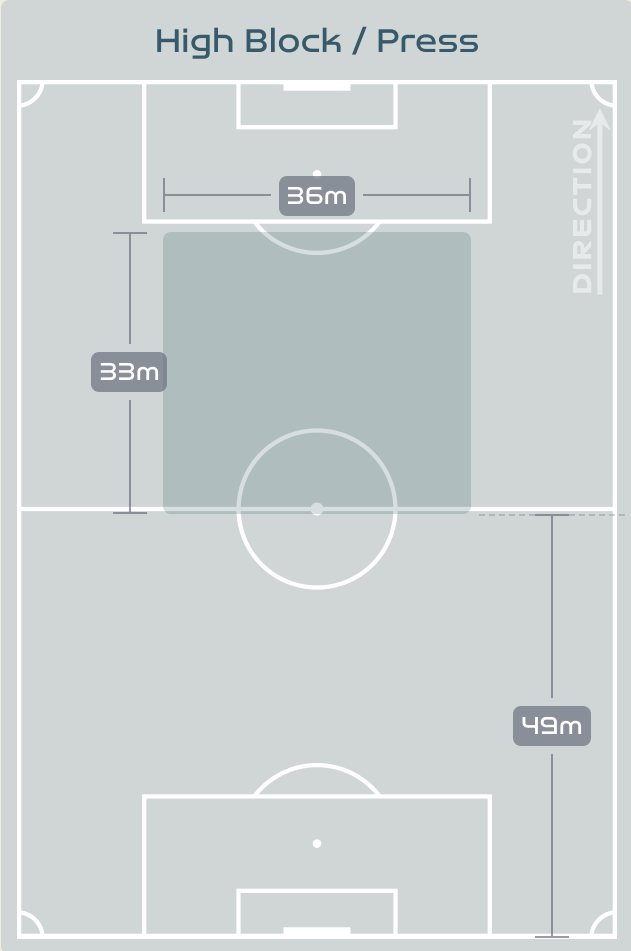


## Most Possession Regains

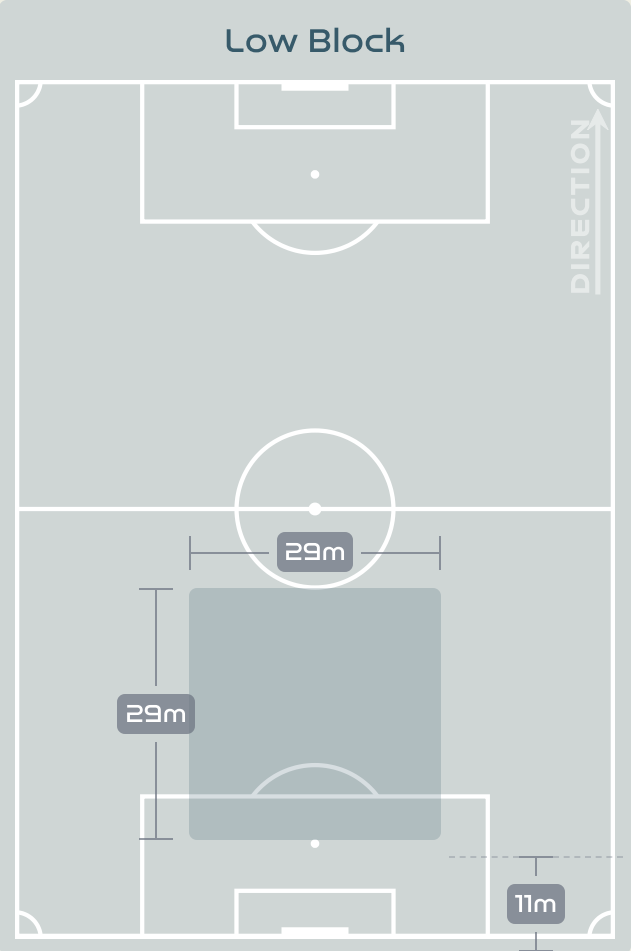
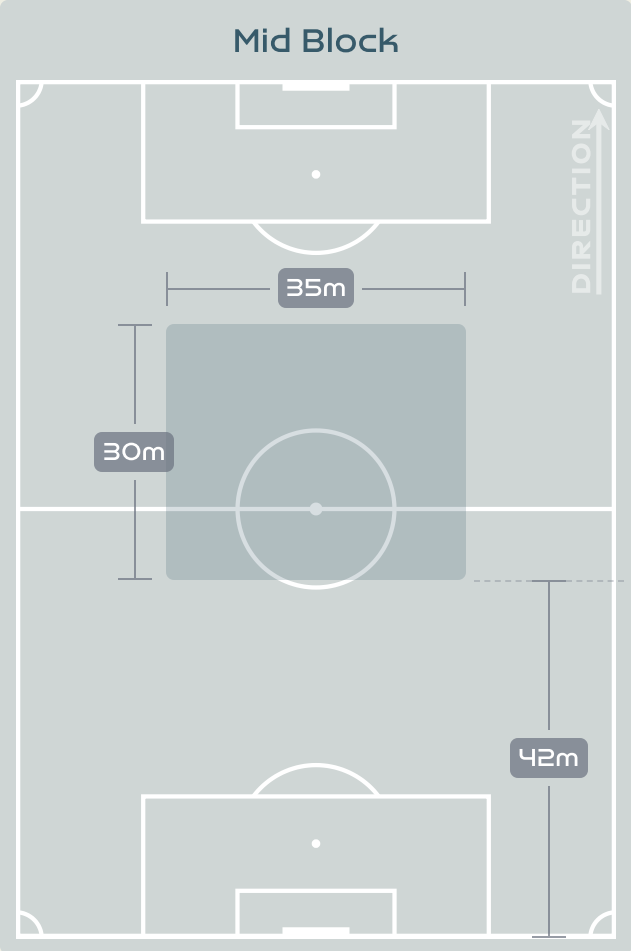
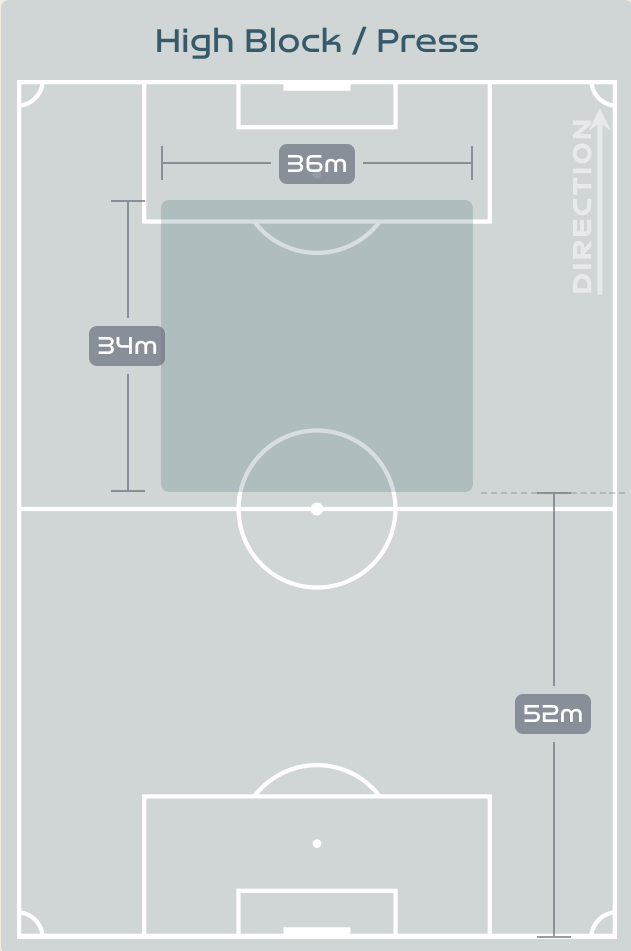


#	Player	Total Possession Regains
1	SHERIDAN Kailen	3
3	BUCHANAN Kadeisha	4
5	QUINN	5
6	ROSE Deanne	2
7	GROSSO Julia	1
8	RIVIERE Jayde	8
9	HUITEMA Jordyn	2
10	LAWRENCE Ashley	3
12	SINCLAIR Christine	3
14	GILLES Vanessa	3
19	LEON Adriana	4
2	CHAPMAN Allysha	1
11	VIENS Evelyne	1
13	SCHMIDT Sophie	1
15	PRINCE Nichelle	3
20	LACASSE Cloe	2

# Defensive Line Height & Team Length



# Defensive Line Height & Team Length

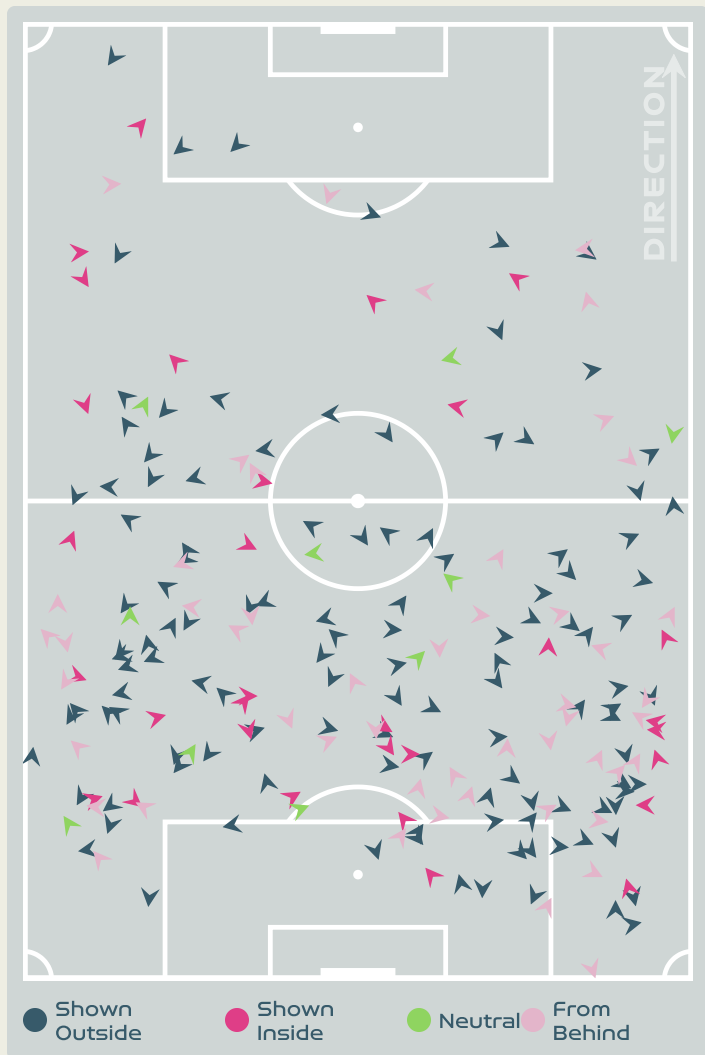


# Defensive Pressure

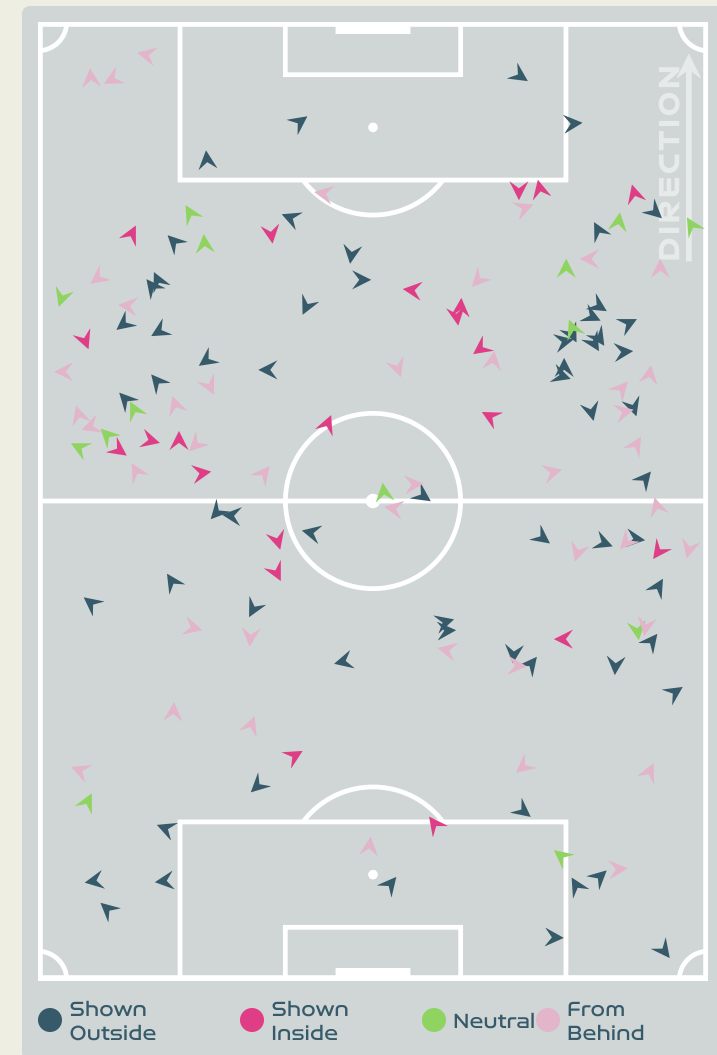


**Nigeria**

**Canada**



212	Total Pressures	141
55	Direct Pressures	46
1.54s	Avg Pressure Duration	1.62s
84	Forced Turnovers	79
8.71s	Ball Recovery Time	6.52s
72	Pushing on into Pressing	49
178	Pushing on	112
31	Pressing Direction Inside	22
121	Pressing Direction Outside	62



**Most Direct Pressures**

**11**

**ALOZIE Michelle**  
RIGHT BACK

**Most Direct Pressures**

**10**

**QUINN**  
DEFENSIVE MIDFIELD CENTRE RIGHT



# GOALKEEPING



Nigeria v Canada

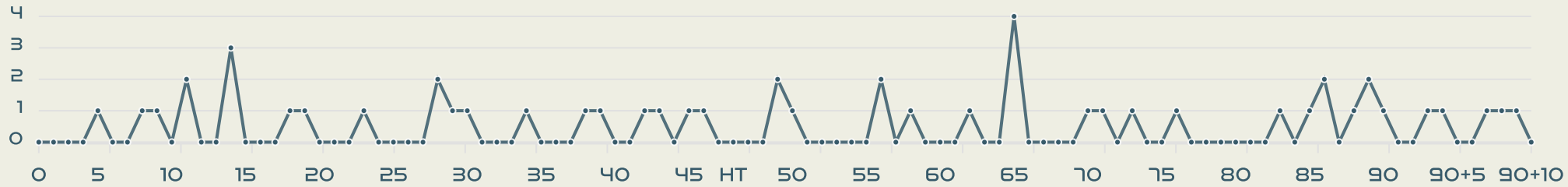


# Goalkeeping Involvement



Nigeria

### Nigeria GK Involvement Timeline

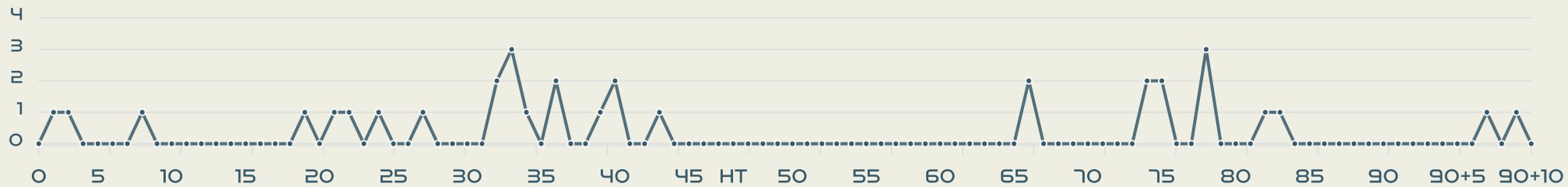


**52**  
Total Involvements



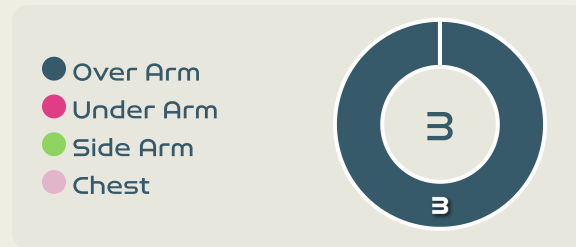
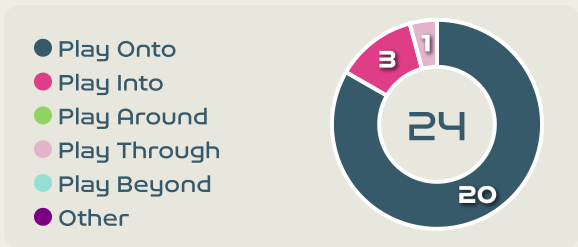
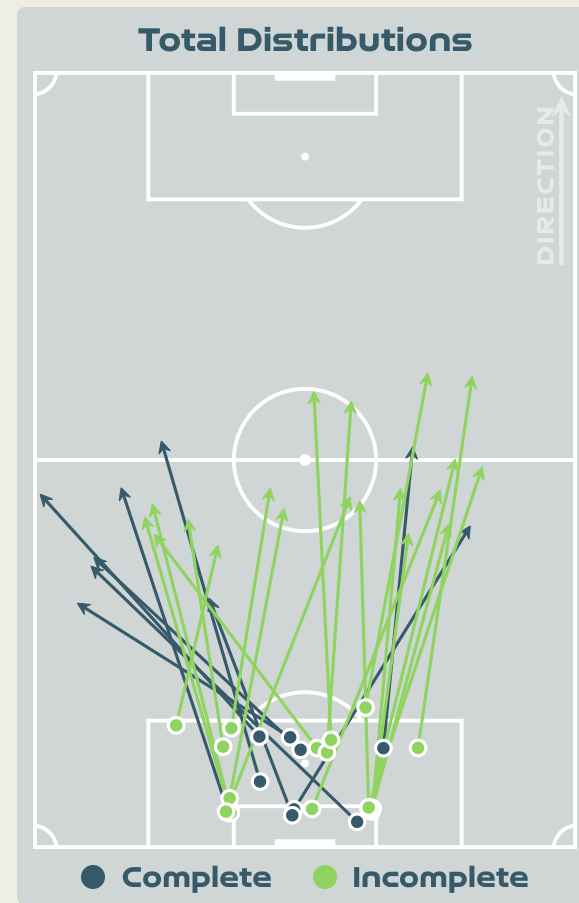
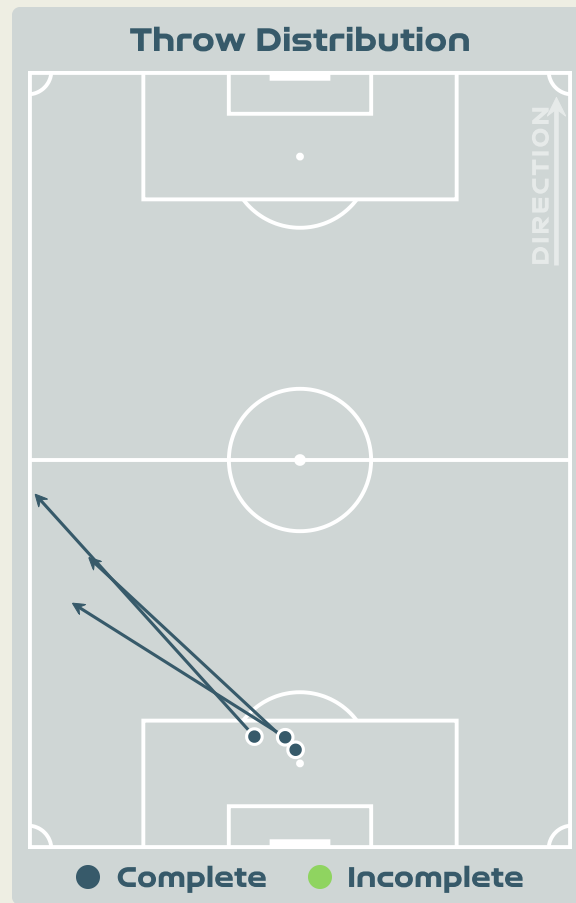
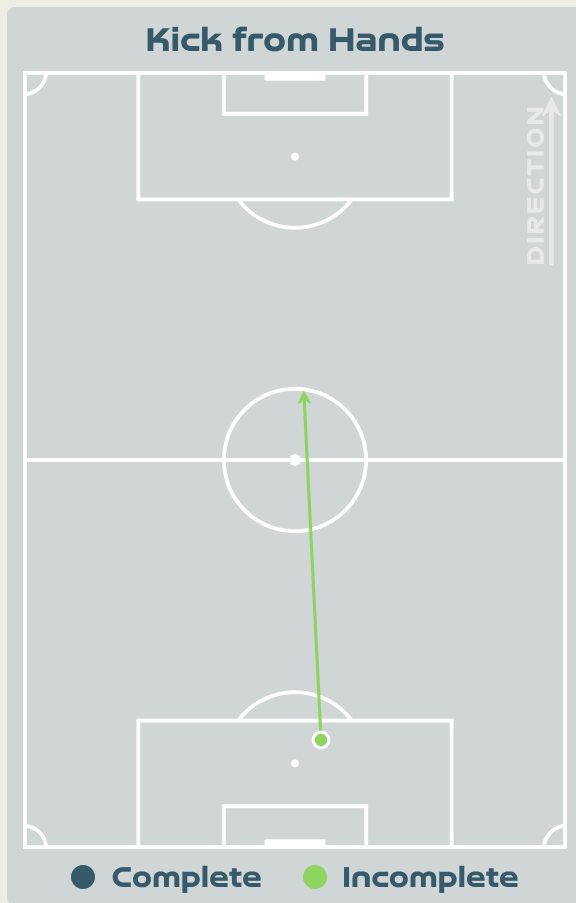
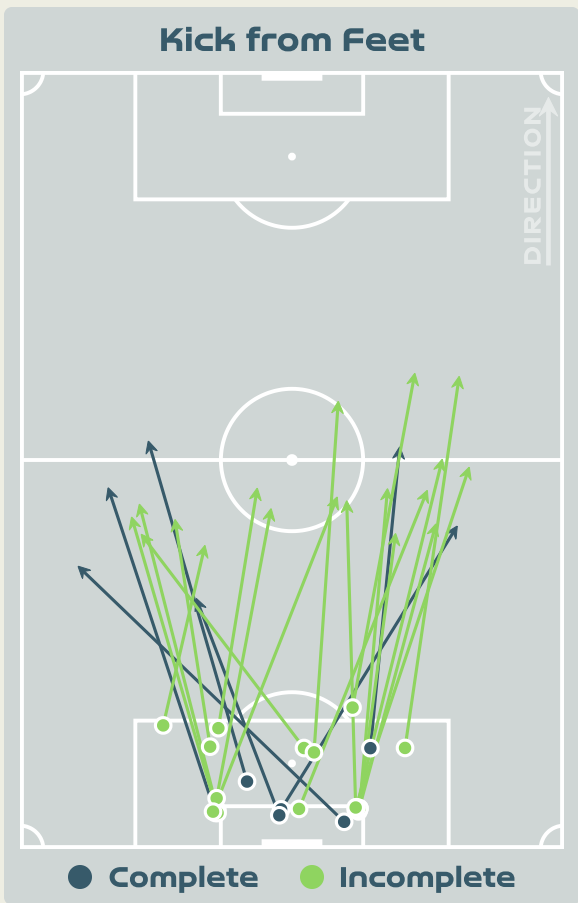
Canada

### Canada GK Involvement Timeline



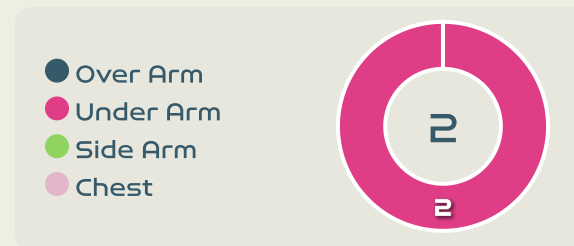
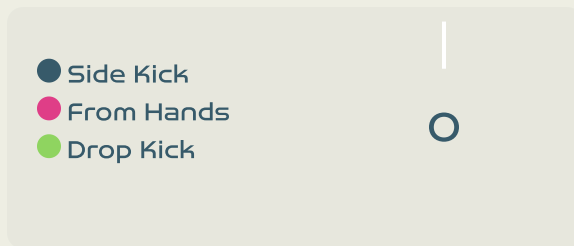
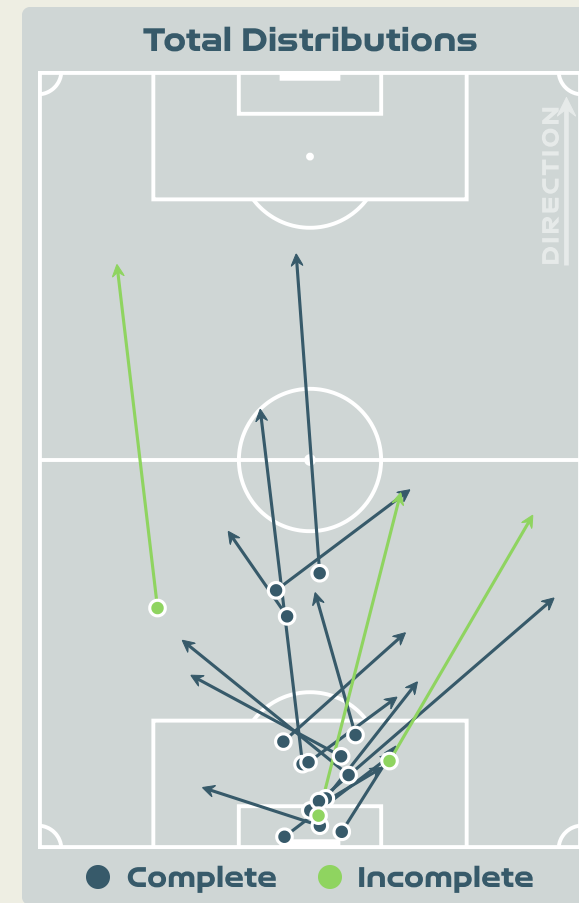
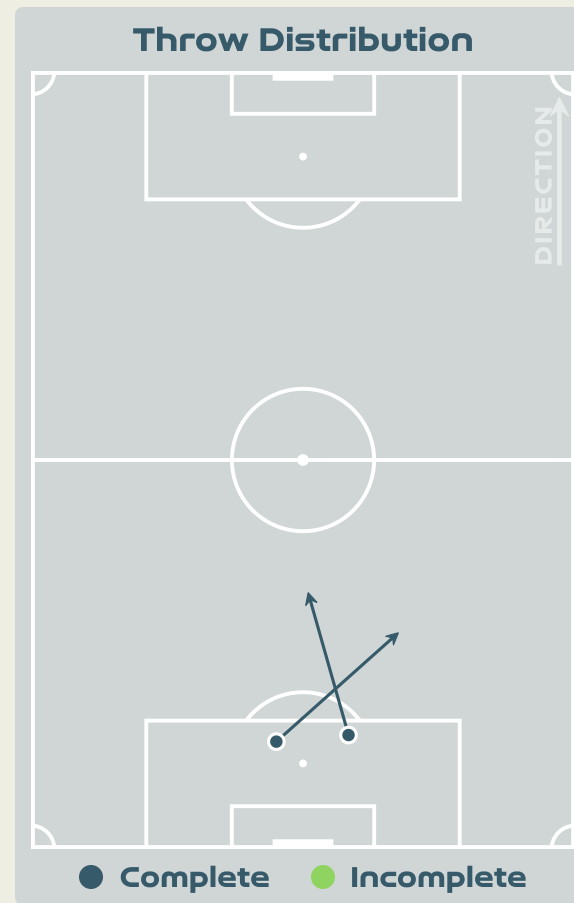
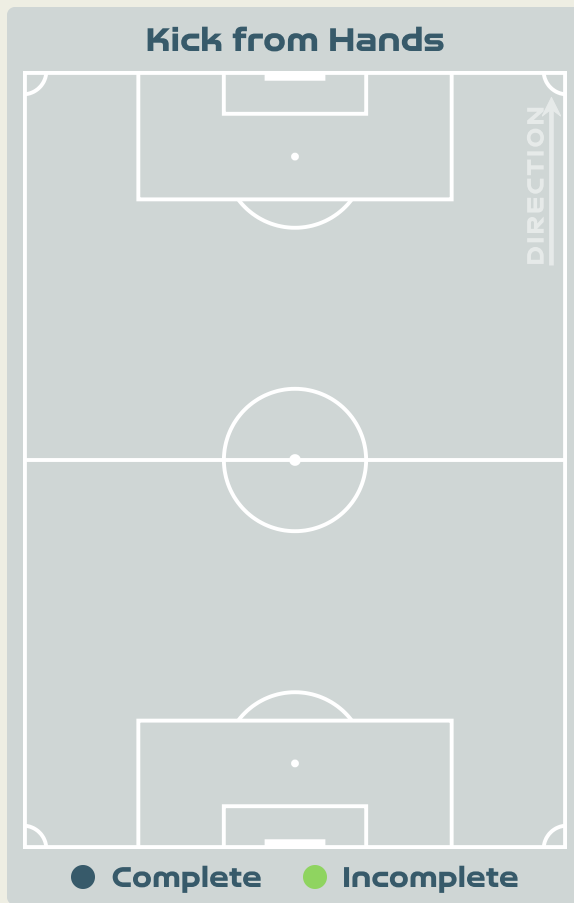
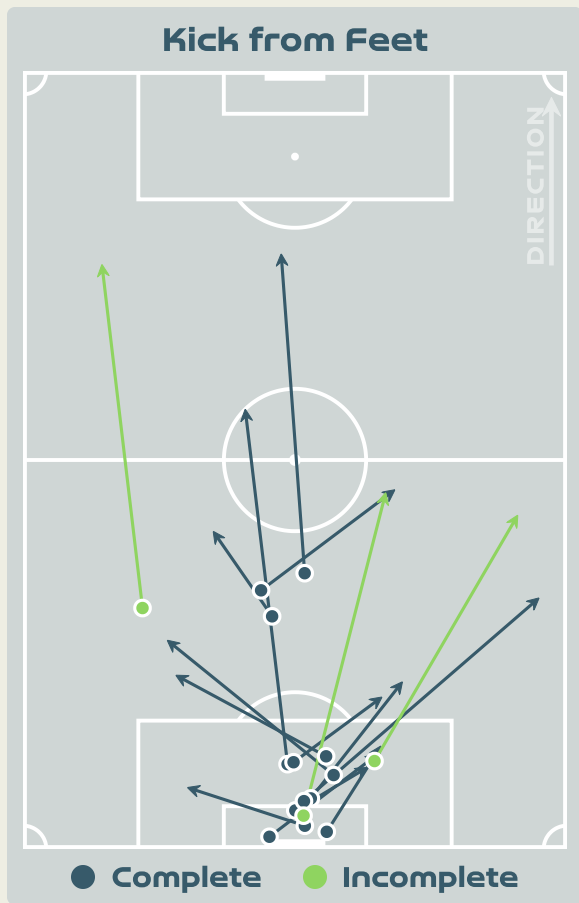
**33**  
Total Involvements

# Goalkeeping Distribution

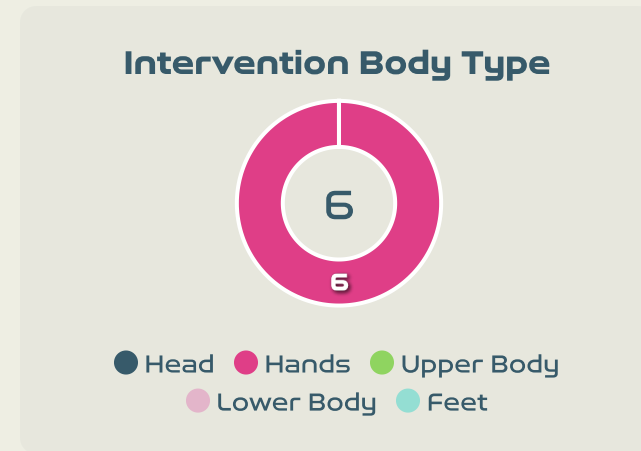
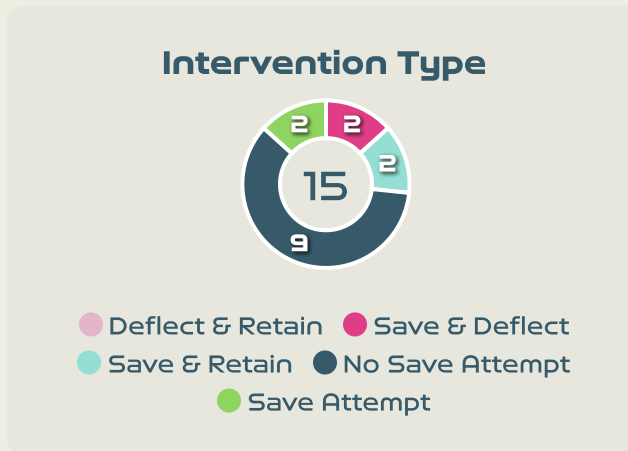
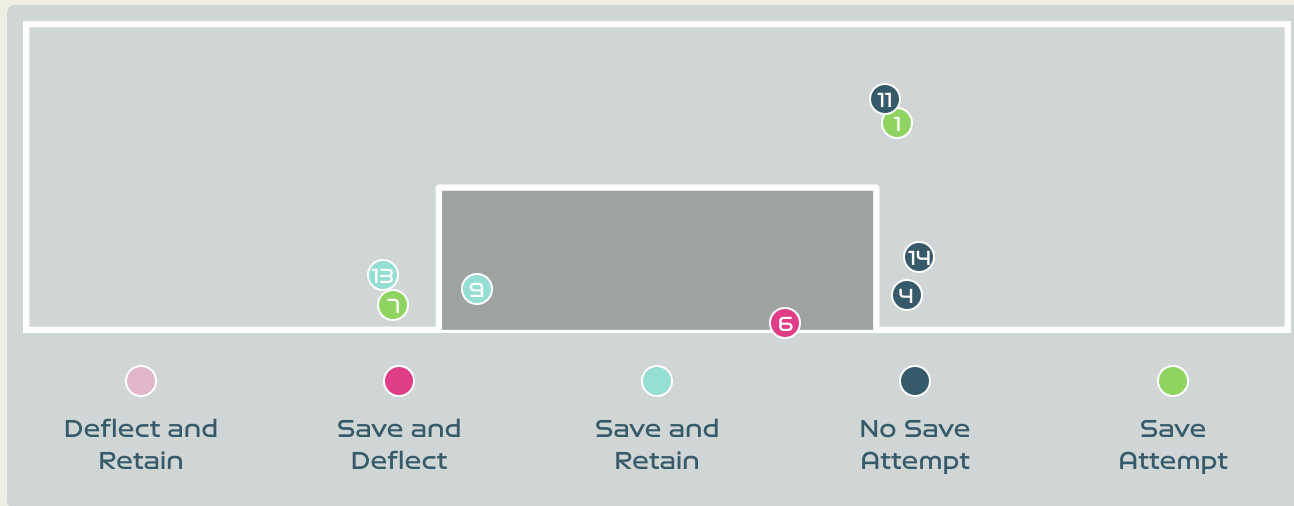
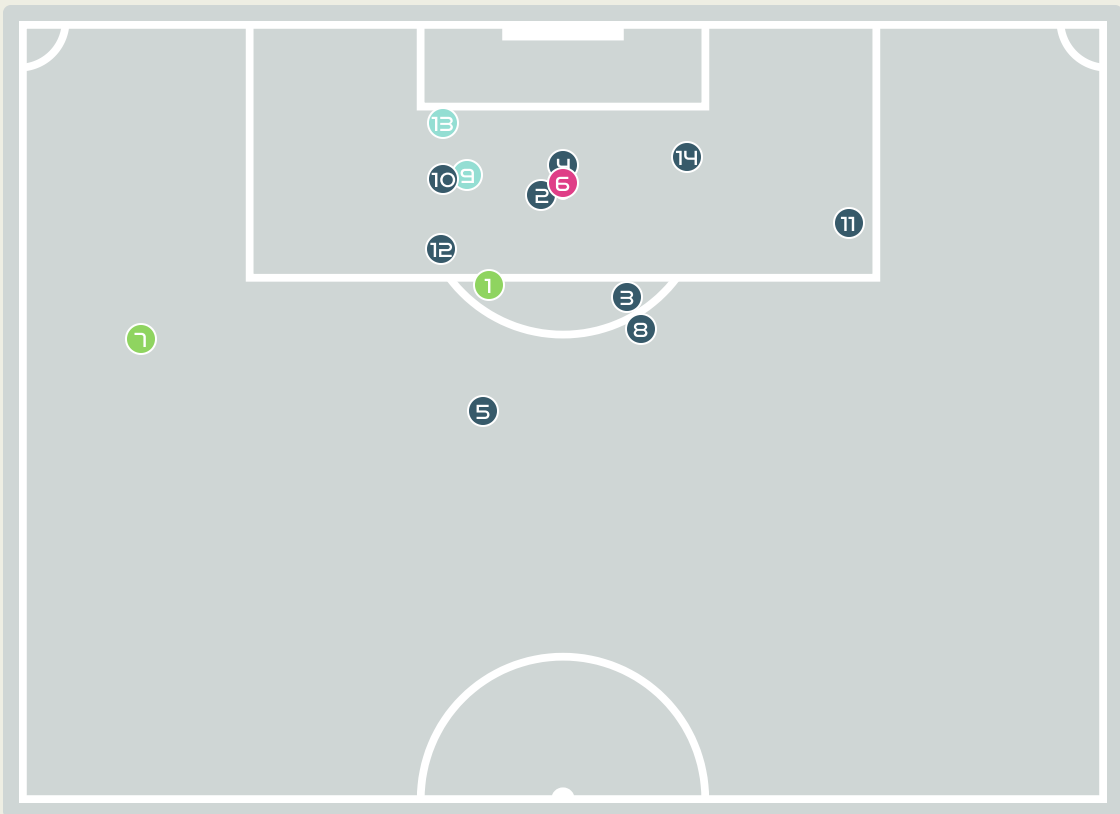




# Goalkeeping Distribution



# Goal Prevention



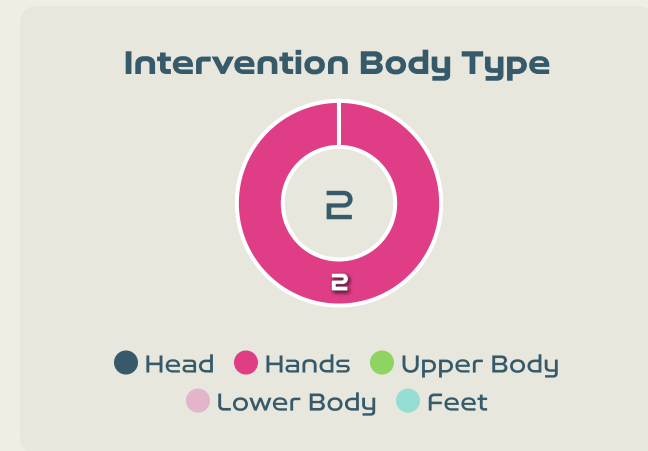
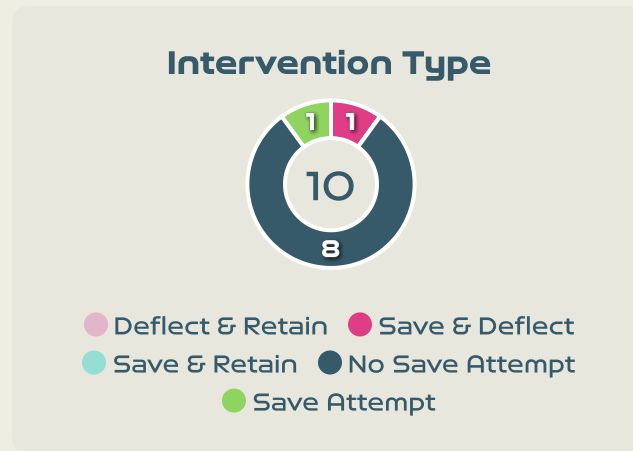
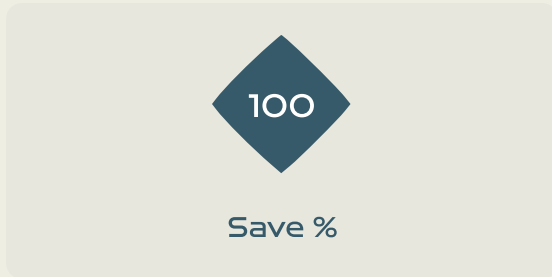
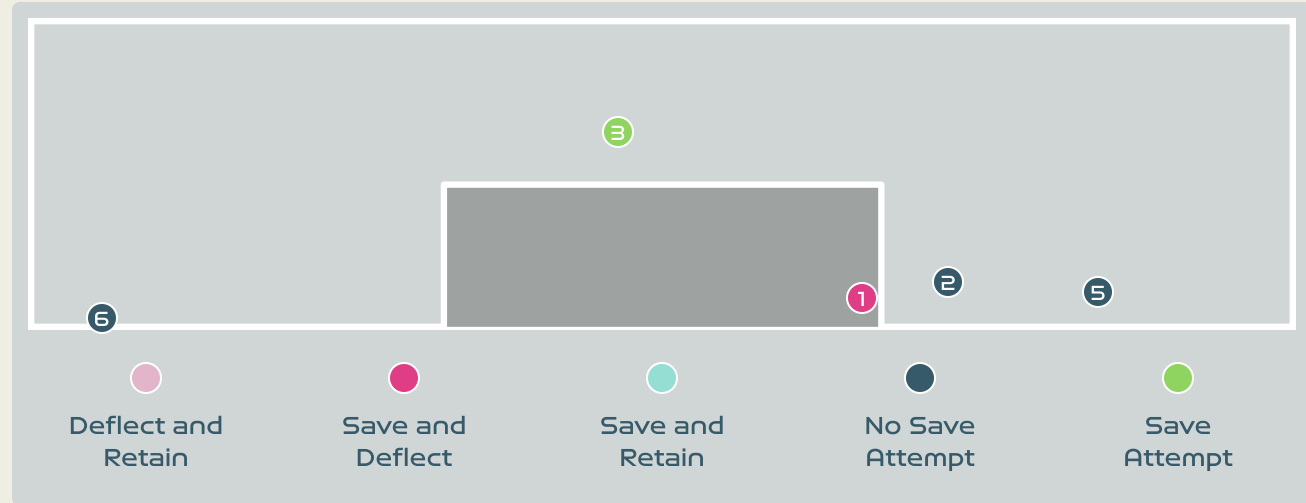
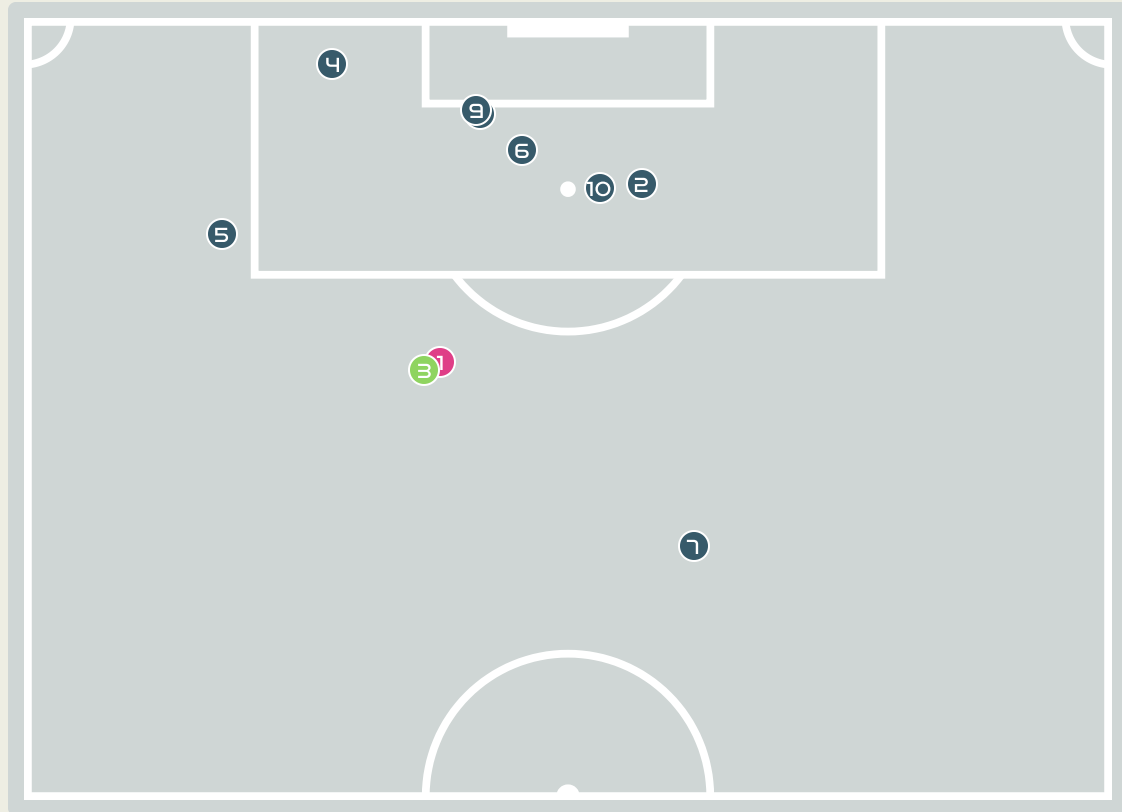
15  
Total Attempts on Goal Faced

100  
Save %

Total Attempts on Goal Faced	Total Goal Interventions	Save & Retain	Deflect & Retain	Save & Deflect	Save Attempt	No Save Attempt
15	4	2	0	2	2	9



# Goal Prevention

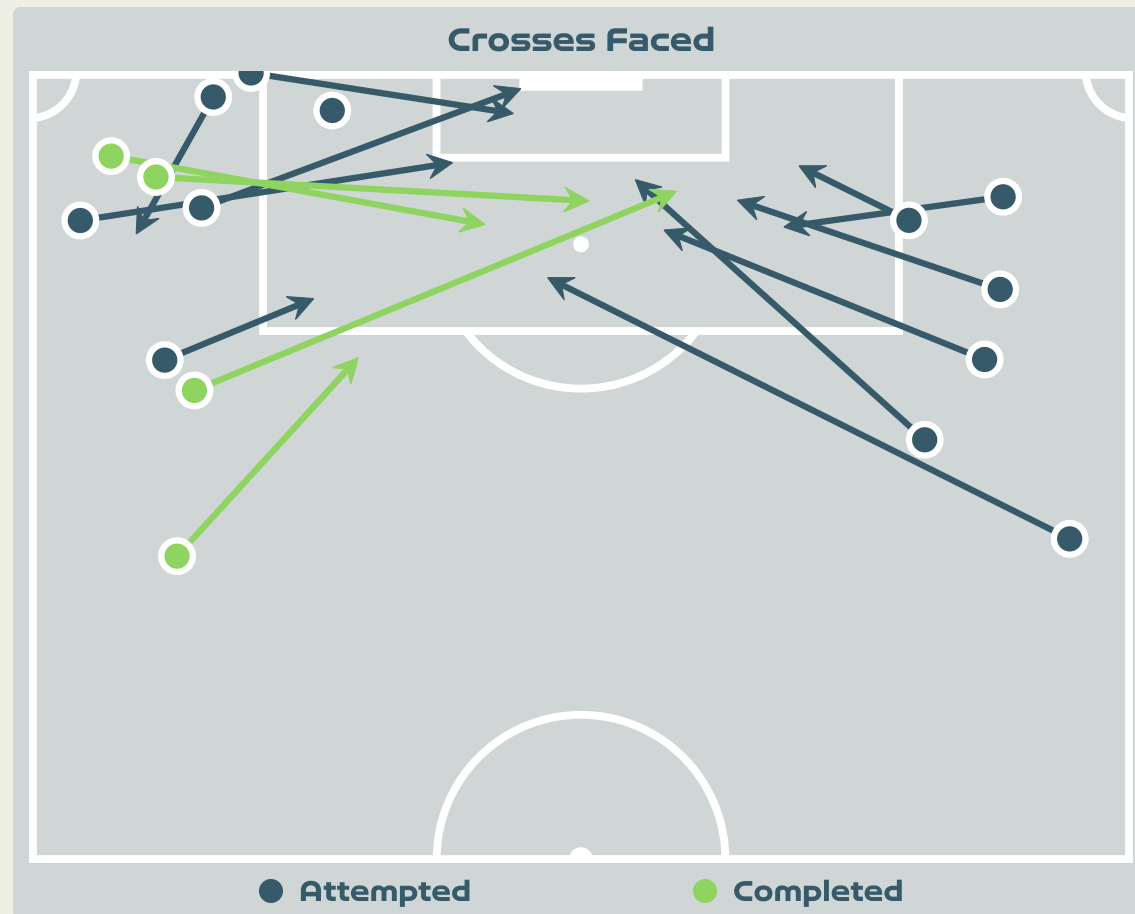
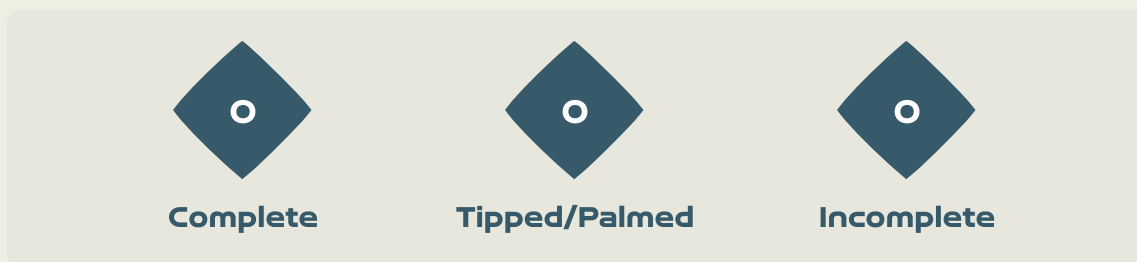
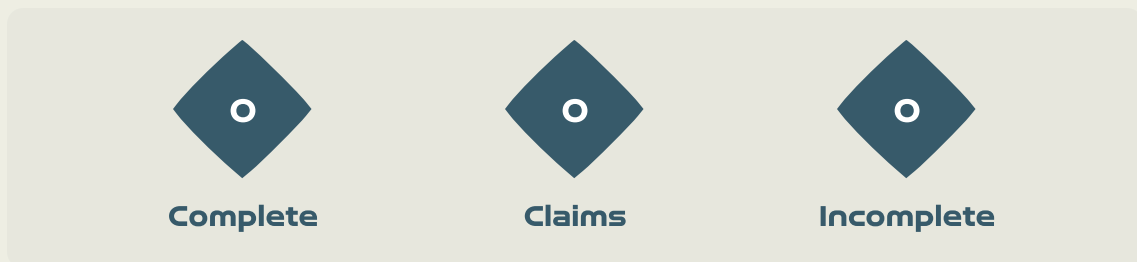


Total Attempts on Goal Faced	Total Goal Interventions	Save & Retain	Deflect & Retain	Save & Deflect	Save Attempt	No Save Attempt
10	1	0	0	1	1	8

Nigeria



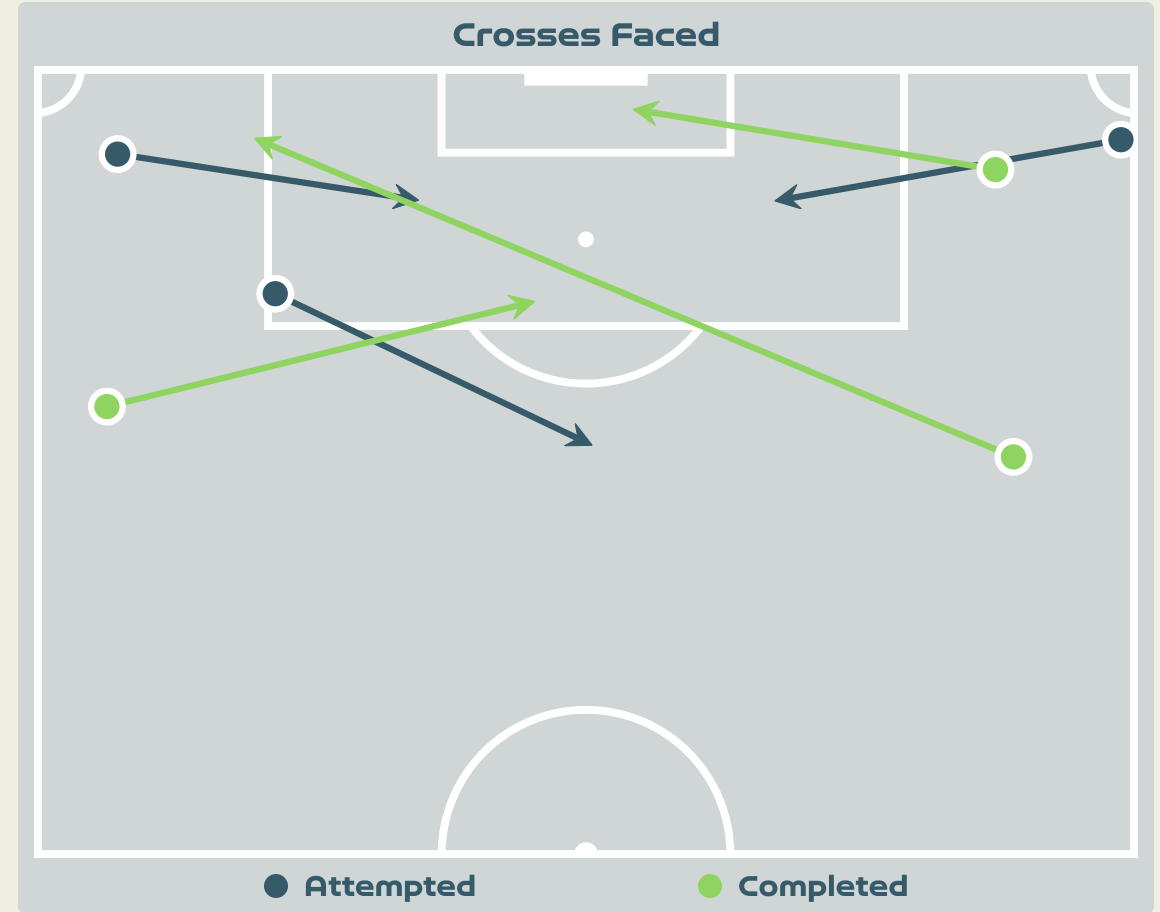
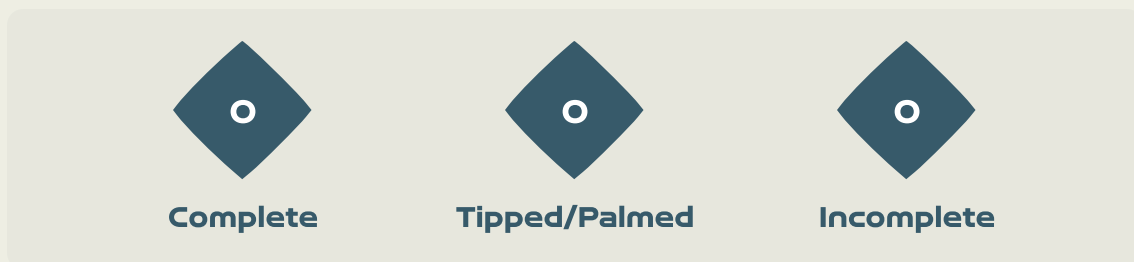
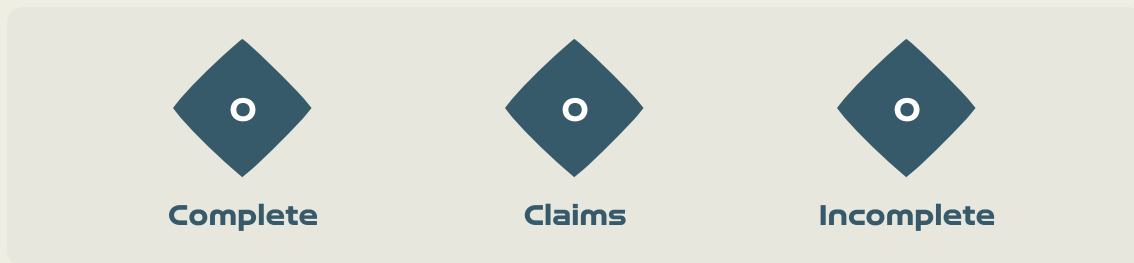
# Aerial Control



## Delivery Types Faced

Total	In Swing	Out Swing	Driven	Lofted	Cutback	Push
26	3	5	0	13	0	5

# Aerial Control



**Delivery Types Faced**

Total	In Swing	Out Swing	Driven	Lofted	Cutback	Push
11	0	5	1	4	0	1



# SET PLAYS



Nigeria v Canada



# Set Plays - Corners

42

Total Set Plays

7

Total Free Kicks

0

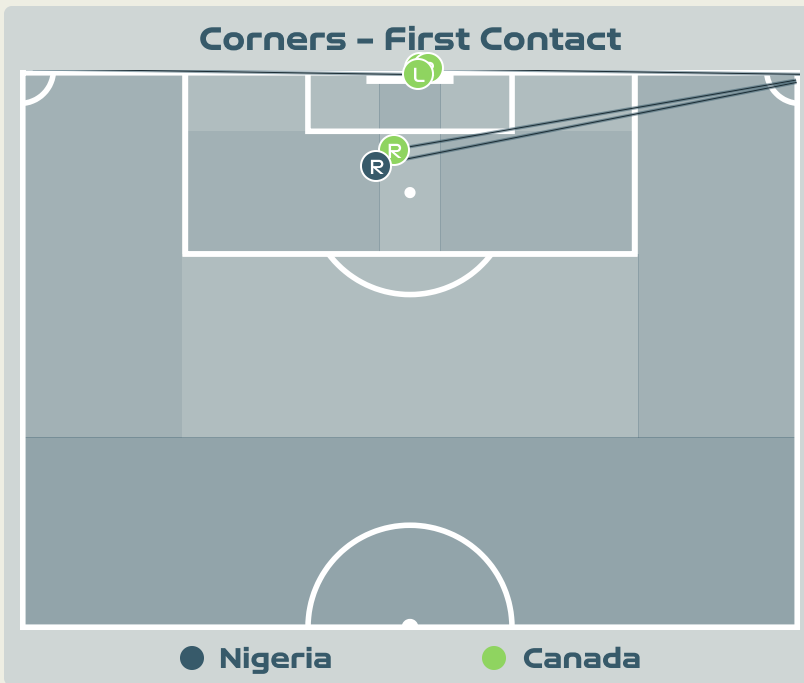
Total Penalties

6

Total Corners

29

Total Throw Ins



Delivery Type	From Left Side	From Right Side	Total
Direct to Area	2	3	5
Short	0	1	1
Edge of Penalty Area	0	0	0

Delivery Style	Total
Inswing	0
Outswing	2
Driven	0

Free Kicks	
Type	Total
Direct	6
Direct (on target)	0
Direct (off target)	0
Indirect	1

## First Contacts on Nigeria Crosses

1

By Nigeria

4

By Canada

Top 5 Player First Contacts		
Player	Team	Total
SHERIDAN Kailen	Canada	3
OSHOALA Asisat	Nigeria	1
GILLES Vanessa	Canada	1



# Set Plays - Corners

58

Total Set Plays

16

Total Free Kicks

1

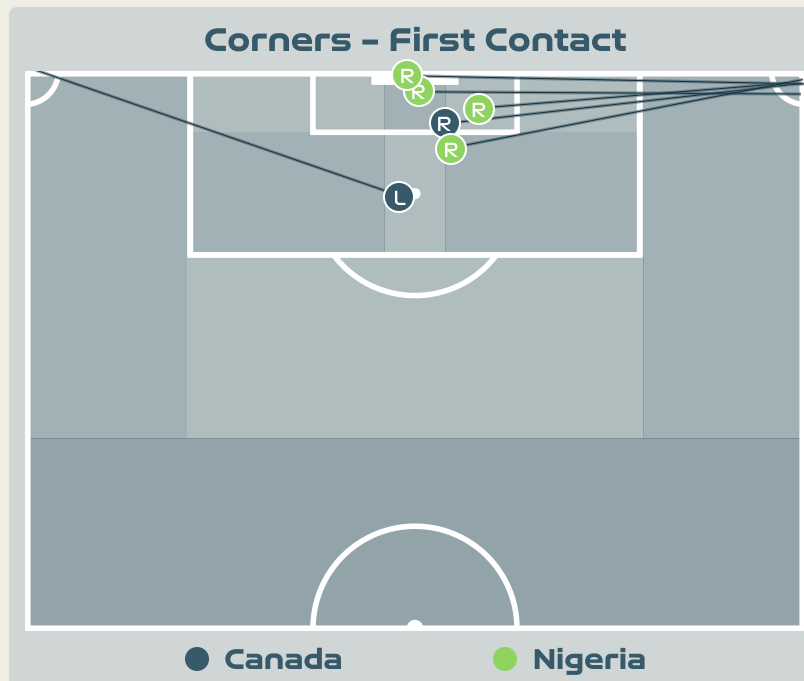
Total Penalties

7

Total Corners

34

Total Throw Ins



Delivery Type	From Left Side	From Right Side	Total
Direct to Area	2	5	7
Short	0	0	0
Edge of Penalty Area	0	0	0

Delivery Style	Total
Inswing	2
Outswing	1
Driven	0

Free Kicks	
Type	Total
Direct	14
Direct (on target)	0
Direct (off target)	1
Indirect	2

## First Contacts on Canada Crosses

2

By Canada

4

By Nigeria

Top 5 Player First Contacts		
Player	Team	Total
NNADOZIE Chiamaka	Nigeria	2
BUCHANAN Kadeisha	Canada	1
VIENS Evelyne	Canada	1
OHAE Osinachi	Nigeria	1
ALOZIE Michelle	Nigeria	1





# INDIVIDUAL DATA IN POSSESSION



Nigeria v Canada



Nigeria



## In Possession - Distributions

#	Player	Passes Attempted	Passes Completed	Pass Completion %	Switches of Play	Crosses Attempted	Crosses Completed	Line Breaks Attempted	Line Breaks Completed	Line Break Completion %	Ball Progressions	Take Ons	Step Ins	Attempts at Goal	Goals
16	NNADOZIE Chiamaka	28	9	32%	0	0	0	26	8	30%	0	0	0	0	0
2	PLUMPTRE Ashleigh	38	25	66%	0	1	0	22	14	63%	4	3	1	0	0
3	OHALE Osinachi	12	7	58%	0	0	0	3	0	0%	0	0	0	0	0
6	ONUMONU Ifeoma	22	15	68%	0	0	0	6	2	33%	0	0	0	3	0
7	PAYNE Toni	17	11	65%	0	4	0	5	2	40%	4	0	4	1	0
8	OSHOALA Asisat	10	6	60%	0	0	0	1	1	100%	2	1	1	2	0
10	UCHEIBE Christy	13	7	54%	0	3	2	5	1	20%	1	1	0	1	0
13	ABIODUN Deborah	26	14	54%	0	0	0	9	2	22%	1	1	0	1	0
14	DEMEHIN Blessing	8	4	50%	0	0	0	3	1	33%	0	0	0	0	0
17	ORDEGA Francisca	8	4	50%	0	2	1	1	1	100%	0	0	0	0	0
22	ALOZIE Michelle	26	14	54%	0	1	1	11	8	72%	2	0	2	2	0
12	KANU Uchenna	5	3	60%	0	0	0	0	0	0%	2	2	0	0	0
19	ECHEGINI Jennifer	3	3	100%	0	0	0	2	2	100%	0	0	0	0	0
21	OKORONKWO Esther	5	3	60%	0	0	0	0	0	0%	0	0	0	0	0

Nigeria



# In Possession - Offers & Receptions

			Offer movement types						
#	Player	Total Offers	In Front	In Between	Out to In	In to Out	In Behind	No Movement	Offers Received
16	NNADOZIE Chiamaka	0	0	0	0	0	0	0	0
2	PLUMPTRE Ashleigh	27	10	2	1	0	3	11	13
3	OHALE Osinachi	0	0	0	0	0	0	0	0
6	ONUMONU Ifeoma	17	1	2	0	1	8	5	8
7	PAYNE Toni	39	9	11	2	3	12	2	7
8	OSHOALA Asisat	25	0	4	0	1	19	1	3
10	UCHEIBE Christy	12	9	3	0	0	0	0	5
13	ABIODUN Deborah	14	7	4	0	3	0	0	9
14	DEMEHIN Blessing	0	0	0	0	0	0	0	0
17	ORDEGA Francisca	19	0	2	0	0	11	6	3
22	ALozIE Michelle	13	6	0	0	0	2	5	4
12	KANU Uchenna	9	0	4	0	2	1	2	3
19	ECHEGINI Jennifer	2	0	1	0	1	0	0	0
21	OKORONKWO Esther	4	0	1	1	0	0	2	0



# In Possession - Distributions

#	Player	Passes Attempted	Passes Completed	Pass Completion %	Switches of Play	Crosses Attempted	Crosses Completed	Line Breaks Attempted	Line Breaks Completed	Line Break Completion %	Ball Progressions	Take Ons	Step Ins	Attempts at Goal	Goals
1	SHERIDAN Kailen	18	15	83%	0	0	0	4	2	50%	0	0	0	0	0
3	BUCHANAN Kadeisha	71	64	90%	2	0	0	12	8	66%	2	0	2	1	0
5	QUINN	57	49	86%	0	1	1	15	11	73%	1	1	0	1	0
6	ROSE Deanne	4	3	75%	0	1	0	2	1	50%	3	2	1	0	0
7	GROSSO Julia	36	32	89%	0	0	0	10	8	80%	1	0	1	2	0
8	RIVIERE Jayde	33	26	79%	0	1	0	11	8	72%	3	1	2	0	0
9	HUITEMA Jordyn	25	13	52%	0	3	0	8	4	50%	4	3	1	4	0
10	LAWRENCE Ashley	56	48	86%	0	2	1	13	11	84%	6	3	3	0	0
12	SINCLAIR Christine	27	18	67%	0	1	0	6	3	50%	2	1	1	2	0
14	GILLES Vanessa	73	68	93%	0	0	0	17	14	82%	1	0	1	0	0
19	LEON Adriana	12	10	83%	0	9	0	7	2	28%	1	1	0	1	0
2	CHAPMAN Allysha	9	8	89%	0	2	2	5	4	80%	0	0	0	0	0
11	VIENS Evelyne	6	5	83%	0	0	0	1	1	100%	0	0	0	2	0
13	SCHMIDT Sophie	13	11	85%	1	5	2	6	5	83%	0	0	0	0	0
15	PRINCE Nichelle	2	2	100%	0	0	0	0	0	0%	0	0	0	0	0
20	LACASSE Cloe	17	12	71%	0	1	0	3	2	66%	0	0	0	1	0

# In Possession - Offers & Receptions



			Offer movement types						
#	Player	Total Offers	In Front	In Between	Out to In	In to Out	In Behind	No Movement	Offers Received
1	SHERIDAN Kailen	5	0	0	0	0	0	5	2
3	BUCHANAN Kadeisha	28	0	1	0	1	0	26	15
5	QUINN	62	41	7	0	0	0	14	28
6	ROSE Deanne	27	2	5	2	2	7	9	5
7	GROSSO Julia	47	23	18	1	2	0	3	18
8	RIVIERE Jayde	16	5	1	0	0	5	5	4
9	HUITEMA Jordyn	43	1	19	1	3	17	2	15
10	LAWRENCE Ashley	41	9	3	0	2	12	15	13
12	SINCLAIR Christine	28	8	7	1	3	6	3	9
14	GILLES Vanessa	8	0	0	0	0	0	8	3
19	LEON Adriana	32	1	2	5	2	18	4	8
2	CHAPMAN Allysha	5	0	0	0	0	4	1	2
11	VIENS Evelyne	14	0	4	0	0	7	3	4
13	SCHMIDT Sophie	15	5	5	1	1	2	1	4
15	PRINCE Nichelle	11	0	1	0	1	6	3	2
20	LACASSE Cloe	33	4	5	4	3	12	5	8



# INDIVIDUAL DATA OUT OF POSSESSION



Nigeria v Canada



## Out of Possession



#	Player	Tackles Made / Won	Blocks	Interceptions	Pressing Direct	Pressing Indirect	Duels Won - Aerial	Duels Won - Physical	Possession Contests won	Clearances	Loose Ball Receptions	Pushing On	Pushing On into Pressing	Possession Regains	Possession Interrupted
16	NNADOZIE Chiamaka	0 / 0	0	0	0	0	0	0	0	0	3	0	0	8	0
2	PLUMPTRE Ashleigh	2 / 1	4	0	2	11	2	0	3	6	6	25	9	8	4
3	OHALE Osinachi	2 / 1	2	1	6	4	1	0	1	5	3	7	3	6	4
6	ONUMONU Ifeoma	1 / 0	2	2	3	16	2	0	2	1	3	21	13	2	2
7	PAYNE Toni	1 / 0	4	0	1	34	1	0	2	0	4	24	8	2	2
8	OSHOALA Asisat	4 / 1	2	0	4	18	3	0	4	0	4	21	4	1	4
10	UCHEIBE Christy	10 / 3	8	2	6	13	1	0	1	7	12	14	6	13	6
13	ABIODUN Deborah	9 / 2	6	0	9	21	1	0	2	5	6	27	6	8	5
14	DEMEHIN Blessing	5 / 3	3	1	7	5	0	0	0	3	3	1	1	6	2
17	ORDEGA Francisca	9 / 1	0	0	3	13	1	0	1	1	6	12	9	1	2
22	ALOZIE Michelle	9 / 1	0	1	11	10	0	0	0	9	7	13	7	3	7
12	KANU Uchenna	1 / 0	1	0	2	5	0	0	0	0	2	5	2	0	0
19	ECHEGINI Jennifer	0 / 0	1	0	0	5	0	0	0	0	2	6	3	0	1
21	OKORONKWO Esther	1 / 0	0	0	1	2	0	0	0	0	3	2	1	0	0

## Out of Possession



#	Player	Tackles Made / Won	Blocks	Interceptions	Pressing Direct	Pressing Indirect	Duels Won - Aerial	Duels Won - Physical	Possession Contests won	Clearances	Loose Ball Receptions	Pushing On	Pushing On into Pressing	Possession Regains	Possession Interrupted
1	SHERIDAN Kailen	0 / 0	0	0	0	0	0	0	0	0	3	0	0	3	0
3	BUCHANAN Kadeisha	2 / 1	1	2	2	2	0	0	0	6	7	5	1	4	5
5	QUINN	2 / 1	3	0	10	11	4	0	4	3	14	11	4	5	3
6	ROSE Deanne	0 / 0	0	1	4	6	0	1	1	1	2	7	4	2	1
7	GROSSO Julia	1 / 0	0	1	2	11	2	0	4	0	7	6	2	1	1
8	RIVIERE Jayde	4 / 2	5	2	5	10	0	0	1	6	4	13	6	8	4
9	HUITEMA Jordyn	5 / 0	1	0	4	14	4	0	4	1	6	15	9	2	2
10	LAWRENCE Ashley	1 / 1	3	0	5	6	0	0	0	4	7	13	3	3	3
12	SINCLAIR Christine	1 / 1	0	0	1	6	1	0	2	0	3	4	3	3	0
14	GILLES Vanessa	0 / 0	3	0	0	2	5	0	5	6	9	2	0	3	3
19	LEON Adriana	1 / 0	2	2	3	8	1	0	1	0	3	8	3	4	1
2	CHAPMAN Allysha	1 / 0	0	0	2	1	3	0	4	2	3	4	1	1	1
11	VIENS Evelyne	0 / 0	1	0	1	4	0	0	0	0	2	7	2	1	0
13	SCHMIDT Sophie	0 / 0	0	0	2	3	3	0	3	2	5	5	3	1	1
15	PRINCE Nichelle	3 / 1	2	0	3	1	0	0	0	0	0	2	1	3	2
20	LACASSE Cloe	2 / 0	1	0	2	10	0	0	1	0	4	10	7	2	1





# INDIVIDUAL DATA PHYSICAL



Nigeria v Canada



## Physical Data

Nigeria



#	Player	Total Distance (m)	Zone 1: 0-7 km/h (m)	Zone 2: 7-13km/h (m)	Zone 3: 13-19km/h (m)	Zone 4: 19-23km/h (m)	Zone 5: 23+ km/h (m)	High Speed Runs (Zone 4)	Sprints (Zone 5)	Top Speed (km/h)
16	NNADOZIE Chiamaka	3353.7	2751.7	538.3	63.7	0	0	10.0	0	19.1
2	PLUMPTRE Ashleigh	9471.1	3465.5	3364.1	1922.6	538.9	180.0	182.0	44.0	29.3
3	OHALE Osinachi	8073.6	3034.1	3357.8	1391.9	212.3	78.3	129.0	23.0	31.2
6	ONUMONU Ifeoma	8068.6	3310.5	2560.2	1627.4	374.4	196.9	140.0	40.0	28.1
7	PAYNE Toni	9627.9	3184.0	3932.0	1987.2	239.7	285.9	160.0	32.0	27.5
8	OSHOALA Asisat	8051.6	3568.5	2173.1	1635.3	399.4	275.4	143.0	38.0	31.8
10	UCHEIBE Christy	10728.4	3816.1	3787.1	2382.8	469.9	271.4	193.0	46.0	30.9
13	ABIODUN Deborah	9314.6	3708.2	2727.3	2297.9	434.1	147.2	190.0	39.0	28.8
14	DEMEHIN Blessing	7993.3	3134.2	3214.9	1321.3	254.2	69.5	122.0	21.0	28.1
17	ORDEGA Francisca	6711.4	2739.6	2129.5	1279.2	385.9	176.5	115.0	36.0	29.0
22	ALozIE Michelle	9902.0	3453.8	3768.7	1873.4	422.8	384.2	158.0	46.0	30.7
12	KANU Uchenna	2964.9	864.3	974.3	751.6	245.8	129.0	63.0	23.0	28.9
19	ECHEGINI Jennifer	1012.6	313.8	242.4	269.1	146.1	41.1	25.0	11.0	28.0
21	OKORONKWO Esther	1732.0	518.7	663.5	459.7	90.1	0	39.0	9.0	23.1

## Physical Data



#	Player	Total Distance (m)	Zone 1: 0-7 km/h (m)	Zone 2: 7-13km/h (m)	Zone 3: 13-19km/h (m)	Zone 4: 19-23km/h (m)	Zone 5: 23+ km/h (m)	High Speed Runs (Zone 4)	Sprints (Zone 5)	Top Speed (km/h)
1	SHERIDAN Kailen	4997.9	3928.9	800.7	236.9	31.0	0	25.0	4.0	23.3
3	BUCHANAN Kadeisha	7787.0	3397.5	2670.2	1272.4	278.0	168.2	118.0	27.0	29.1
5	QUINN	10045.6	3479.8	3659.6	2356.7	409.9	139.6	195.0	29.0	30.2
6	ROSE Deanne	4568.6	1910.1	1537.8	789.5	208.3	122.9	81.0	23.0	32.2
7	GROSSO Julia	8072.5	3127.3	2784.2	1842.1	251.1	67.8	139.0	21.0	26.6
8	RIVIERE Jayde	6038.2	2542.1	2089.8	987.8	279.6	138.3	94.0	31.0	29.2
9	HUITEMA Jordyn	9828.8	3541.3	2829.7	2392.3	670.3	394.1	211.0	61.0	31.5
10	LAWRENCE Ashley	9517.9	3606.3	2968.6	2239.6	574.9	128.5	175.0	45.0	28.5
12	SINCLAIR Christine	6954.4	2765.0	2519.6	1386.0	223.9	59.1	106.0	18.0	26.5
14	GILLES Vanessa	8621.8	3393.6	3260.8	1543.3	309.5	114.7	142.0	31.0	29.1
19	LEON Adriana	6945.0	2289.1	2321.7	1743.2	496.6	93.8	137.0	35.0	30.7
2	CHAPMAN Allysha	2643.5	1090.2	902.7	549.8	44.7	56.0	50.0	6.0	27.0
11	VIENS Evelyne	3350.7	1357.7	1130.2	490.9	205.1	166.9	51.0	22.0	30.2
13	SCHMIDT Sophie	3157.9	907.3	1043.1	874.1	228.6	104.8	73.0	22.0	31.7
15	PRINCE Nichelle	1845.7	617.6	561.5	433.9	186.1	46.9	37.0	18.0	31.5
20	LACASSE Cloe	5523.4	1722.2	1542.1	1554.3	450.7	254.1	128.0	48.0	28.7

