



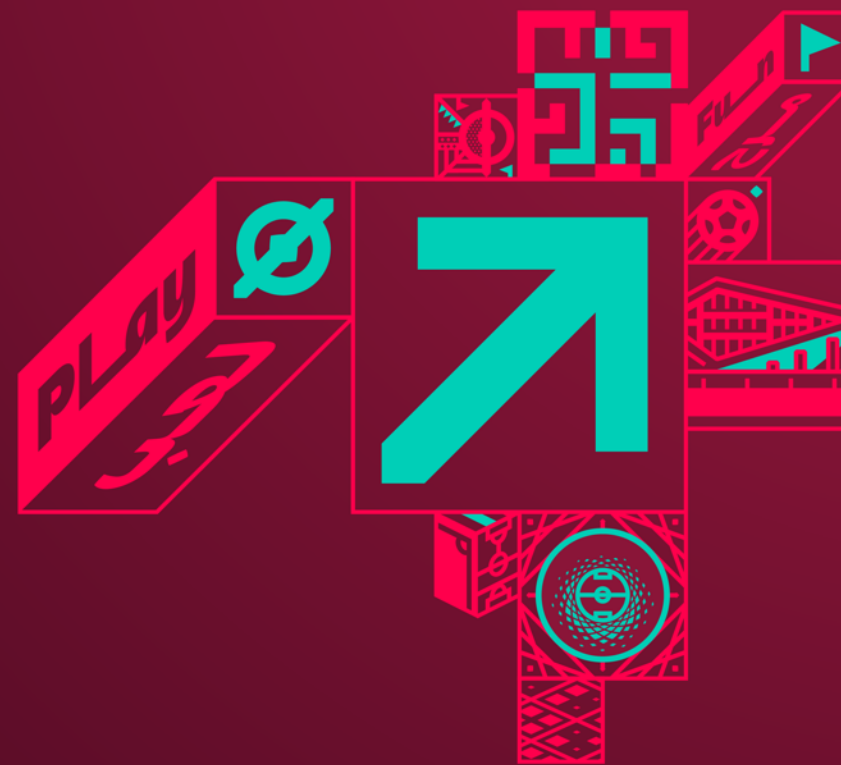
Japan 2 - 1 Spain

Group E – Match 43

01 December 2022

22:00 Kick Off

Khalifa International Stadium



POST MATCH SUMMARY REPORT

Match Summary - Teams

Japan

2 — **1**

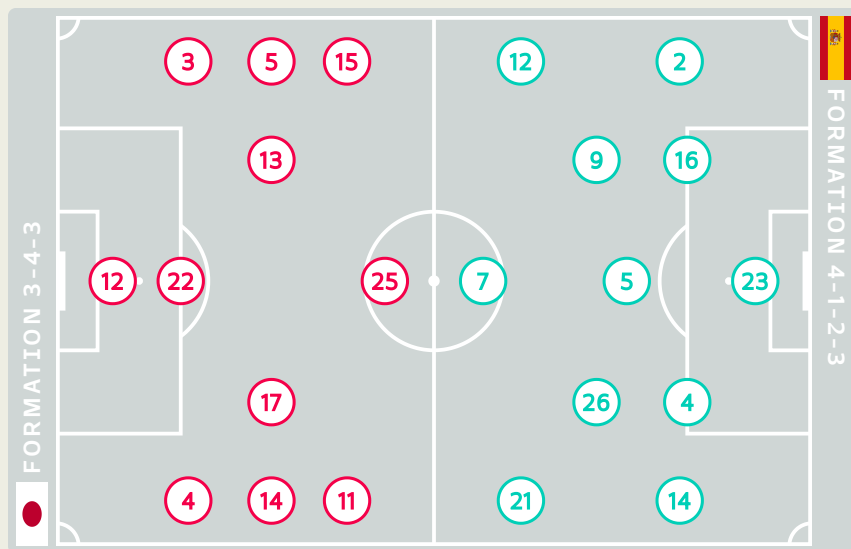
Spain

STARTING

	12	GK	GONDA Shuichi	
	3	DF	TANIGUCHI Shogo	44'
	4	DF	ITAKURA Kou	39'
	5	DF	NAGATOMO Yuto	46'
	11	MF	KUBO Takefusa	46'
	13	MF	MORITA Hidemasa	
	14	MF	ITO Junya	
	15	MF	KAMADA Daichi	69'
	17	MF	TANAKA Ao	51', 87'
	22	DF	YOSHIDA Maya (C)	45'
	25	FW	MAEDA Daizen	62'

SUBSTITUTES

	1	GK	KAWASHIMA Eiji	
	23	GK	SCHMIDT Daniel	
	2	DF	YAMANE Miki	
	6	MF	ENDO Wataru	87'
	7	MF	SHIBASAKI Gaku	
	8	MF	DOAN Ritsu	46', 48'
	9	MF	MITOMA Kaoru	46'
	10	MF	MINAMINO Takumi	
	16	DF	TOMIYASU Takehiro	69'
	18	FW	ASANO Takuma	62'
	19	DF	SAKAI Hiroki	
	20	FW	MACHINO Shuto	
	21	FW	UEDA Ayase	
	24	MF	SOMA Yuki	
	26	DF	ITO Hiroki	



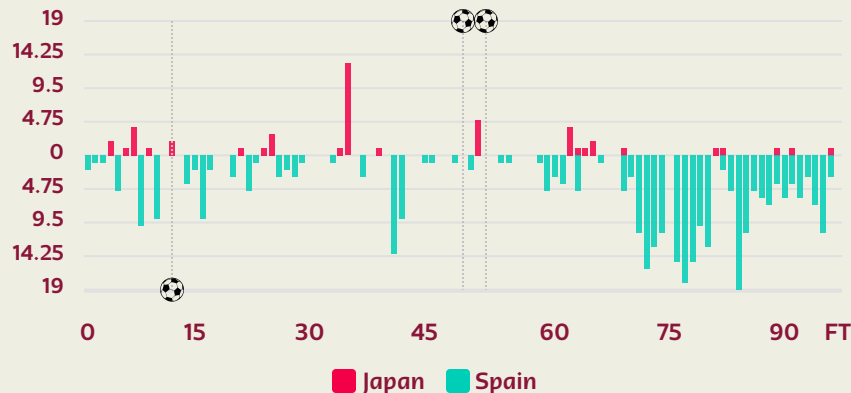
STARTING

			SIMON Unai	GK	23	
46'			AZPILICUETA Cesar	DF	2	
			TORRES Pau	DF	4	
			(C) BUSQUETS Sergio	MF	5	
57'			MORATA Alvaro	FW	7	
			GAVI	MF	9	
57'			WILLIAMS Nico	FW	12	
68'			BALDE Alejandro	DF	14	
			RODRI	MF	16	
			OLMO Dani	FW	21	
			PEDRI	MF	26	

SUBSTITUTES

			SANCHEZ Robert	GK	1	
			RAYA David	GK	13	
			GARCIA Eric	DF	3	
			LLORENTE Marcos	MF	6	
			KOKE	MF	8	
57'			ASENSIO Marco	FW	10	
57'			TORRES Ferran	FW	11	
			GUILLAMON Hugo	DF	15	
			PINO Yeremy	FW	17	
68'			ALBA Jordi	DF	18	
			SOLER Carlos	MF	19	
46'			CARVAJAL Dani	DF	20	
			SARABIA Pablo	FW	22	
			LAPORTE Aymeric	DF	24	
68'			FATI Ansu	FW	25	

Distribution in the Final Third



Match Summary - Key Statistics



Japan



Spain



Possession

Total	14.7%	7.1%	78.2%	Total
2	Goals			1
6 (3)	Attempts at Goal (On Target)			14 (5)
224 (166)	Total Passes (Complete)			1070 (992)
74 %	Pass Completion %			93 %
51	Completed Line Breaks			132
8	Defensive Line Breaks			15
51	Receptions in the Final Third			151
6	Crosses			20
10	Ball Progressions			25
637 (62)	Defensive Pressures Applied (Direct Pressures)			150 (25)
85	Forced Turnovers			49
49	Second Balls			71
116 km	Total Distance Covered			114 km
14.4 km	High Speed (Zone 4) Distance Covered			14.2 km



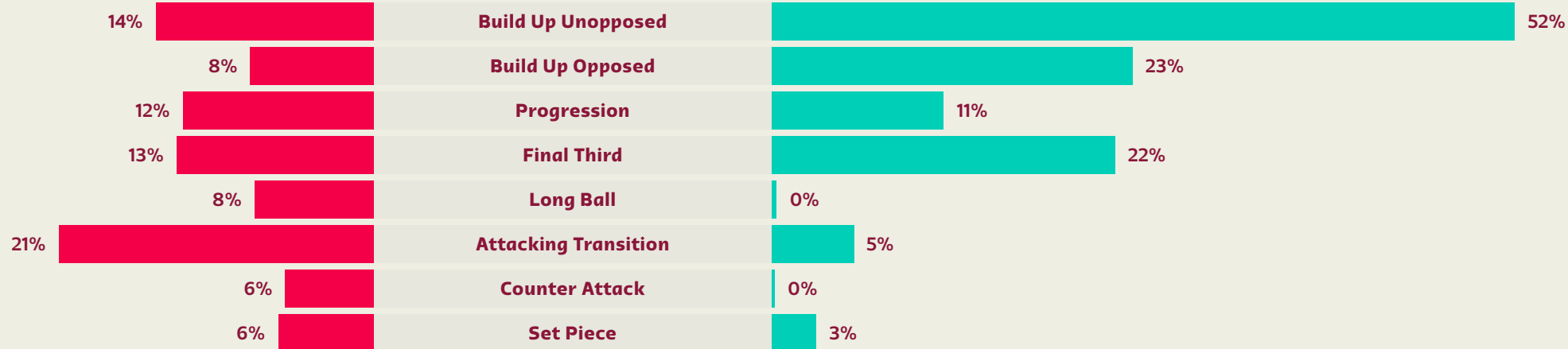
Japan

Phases of Play

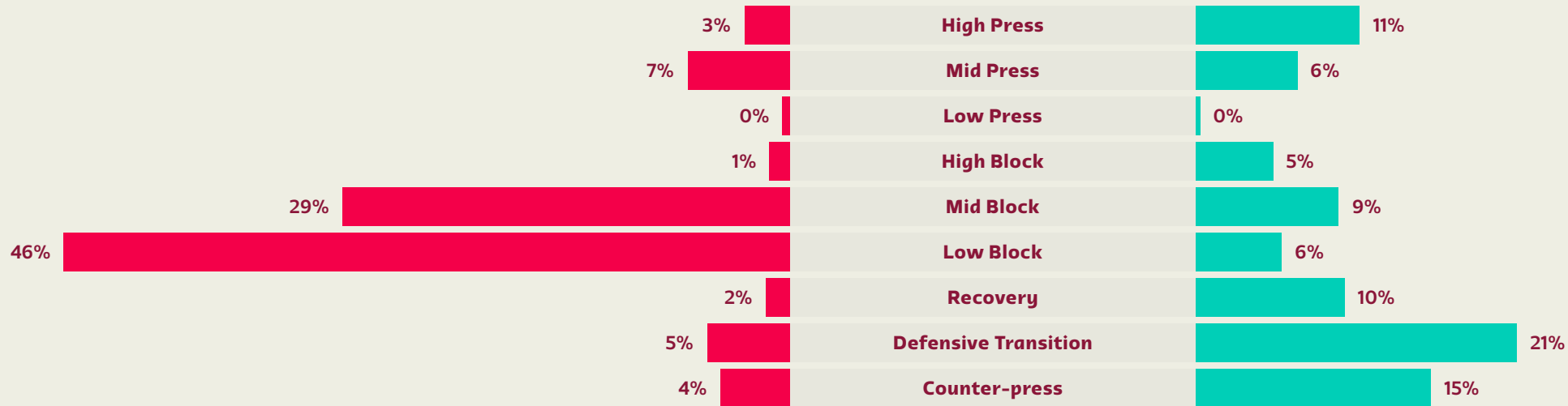
Spain



IN POSSESSION



OUT OF POSSESSION





FIFA WORLD CUP
Qatar 2022



IN POSSESSION

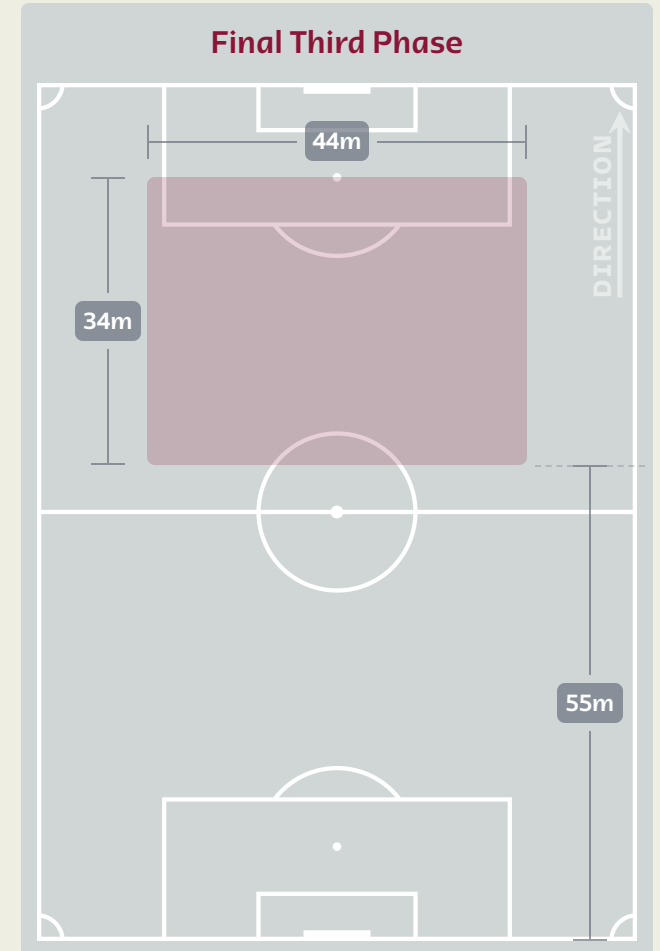
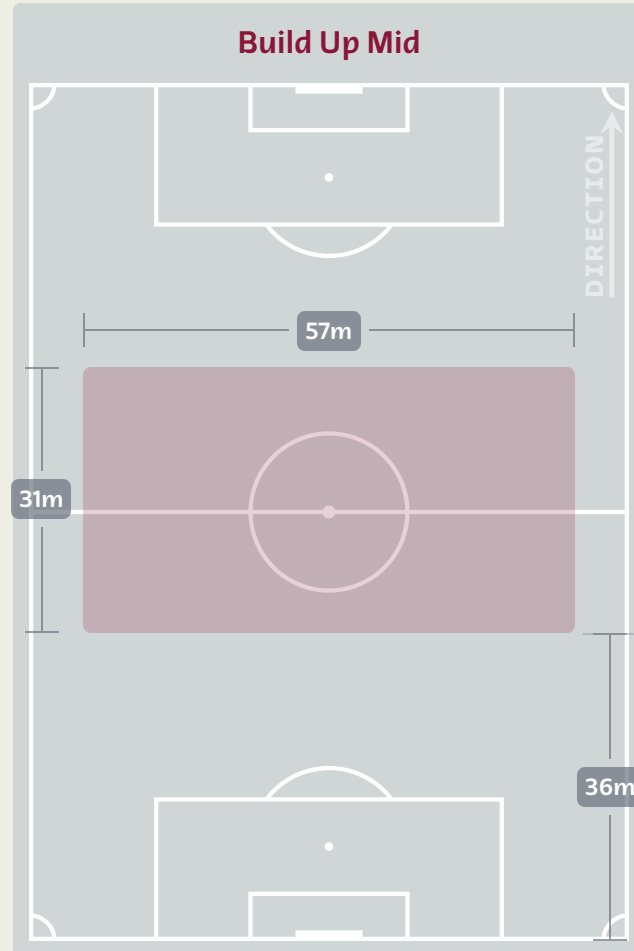
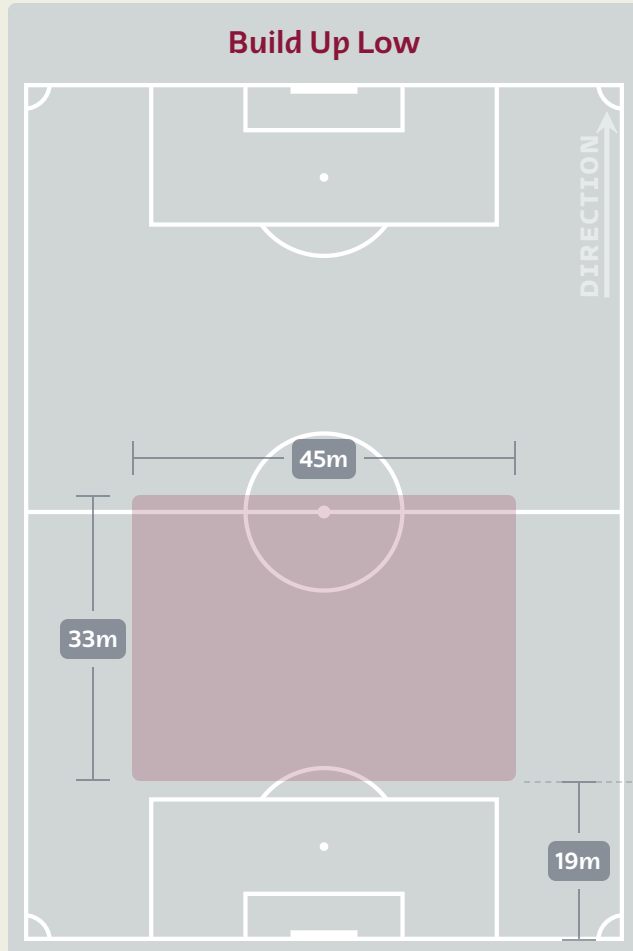


Japan v Spain



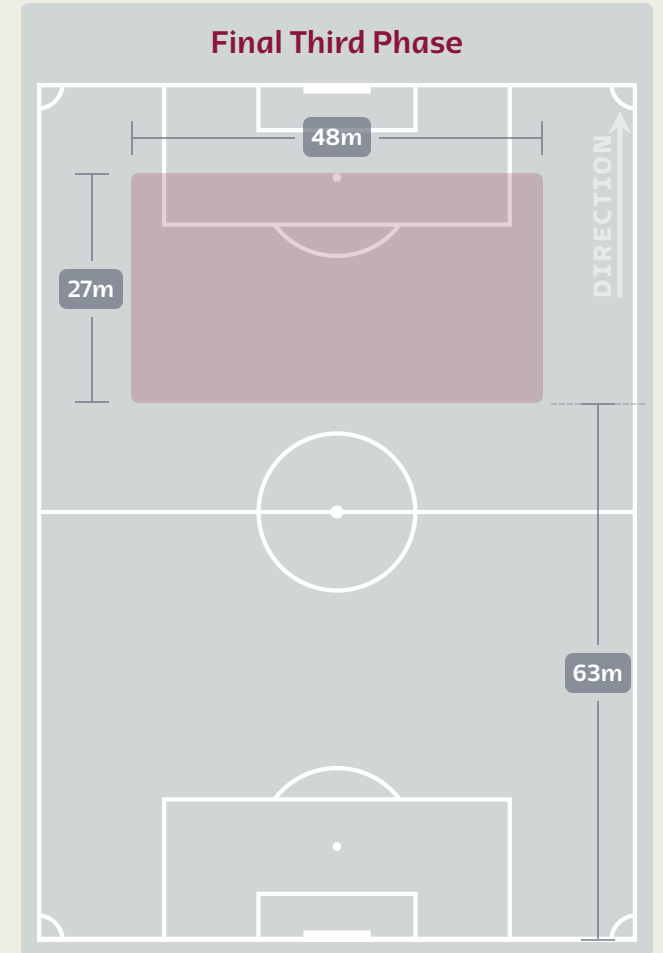
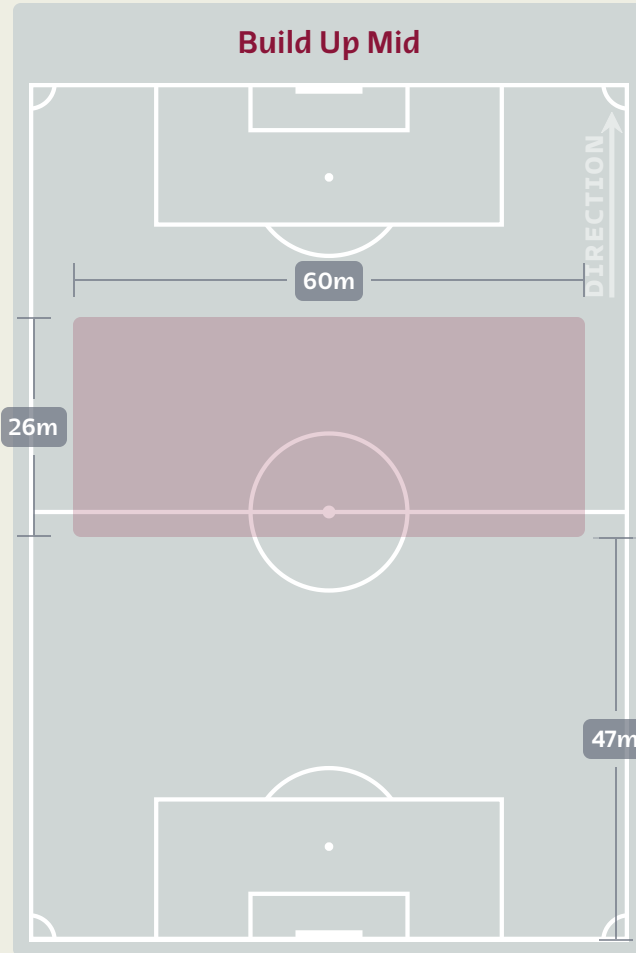
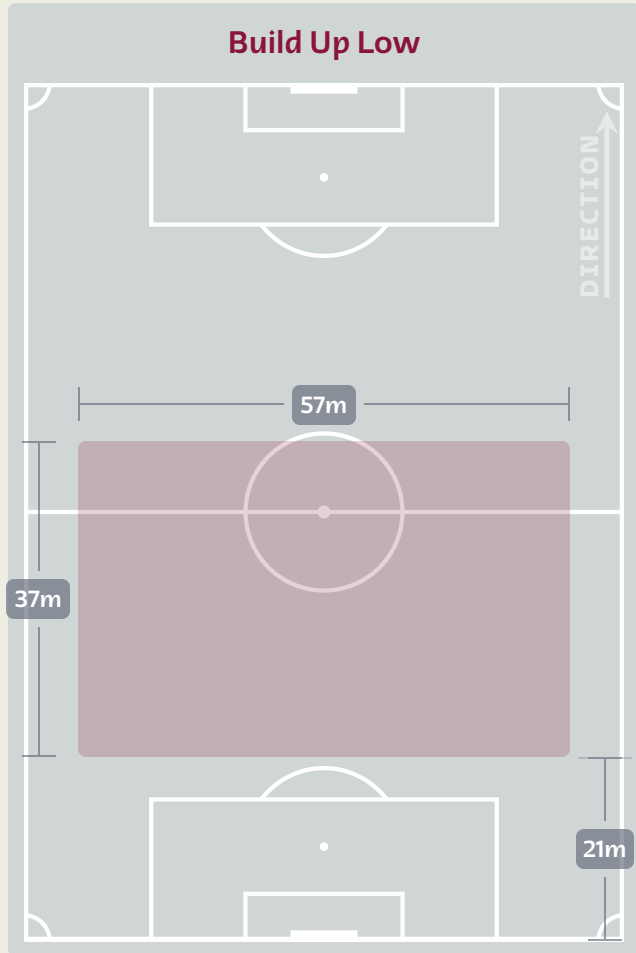
In Possession Line Height & Team Length

Japan



In Possession Line Height & Team Length

Spain



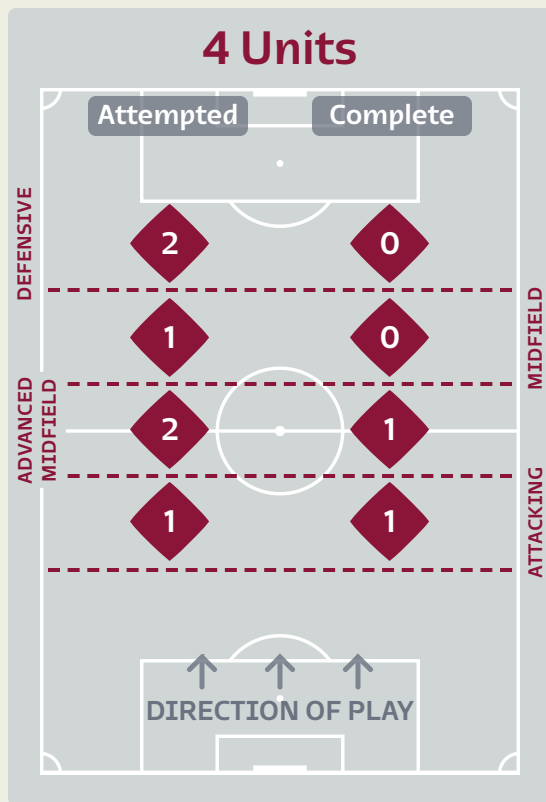
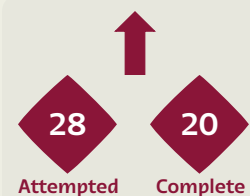
Line Breaks



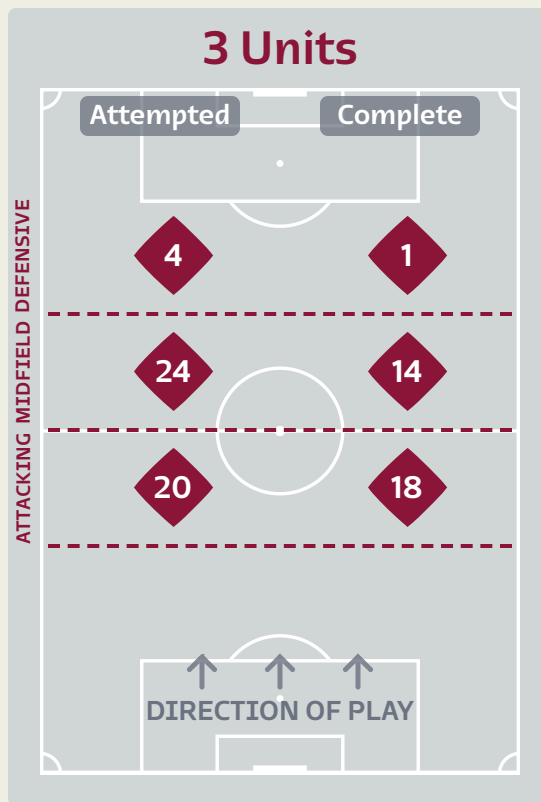
Japan

Attempted Line Breaks

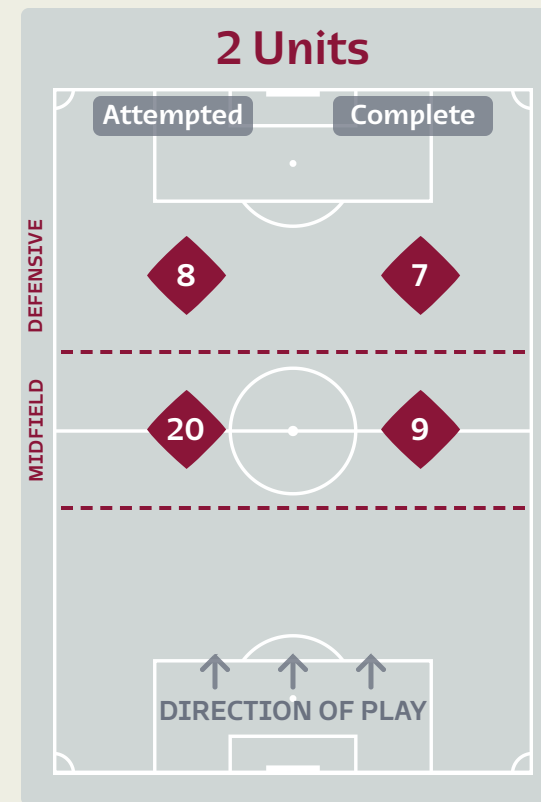
82



Attempted Line Breaks	6
Inside Shape	5
Outside Shape	1



Attempted Line Breaks	48
Inside Shape	34
Outside Shape	14



Attempted Line Breaks	28
Inside Shape	22
Outside Shape	6

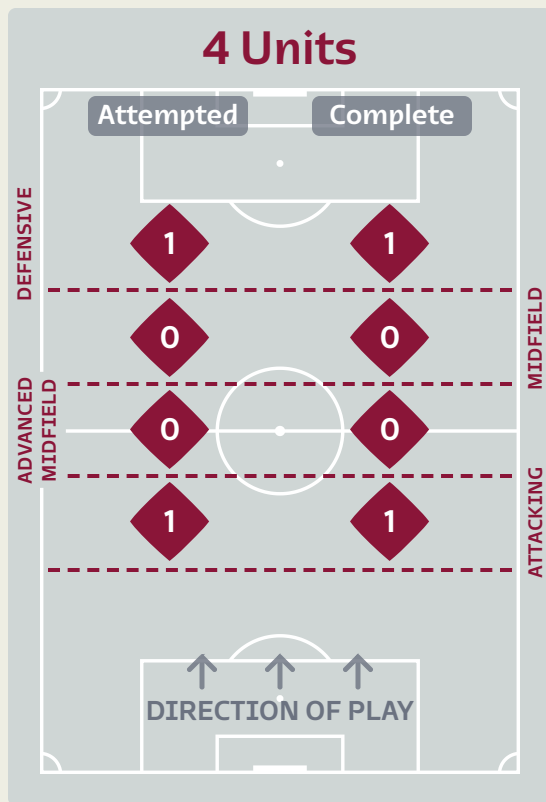
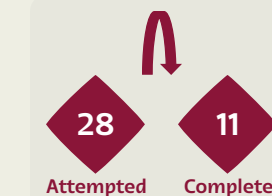
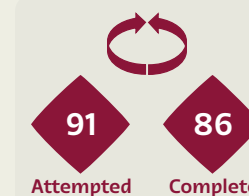
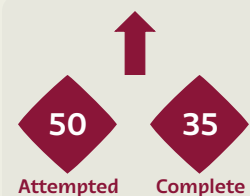
Line Breaks



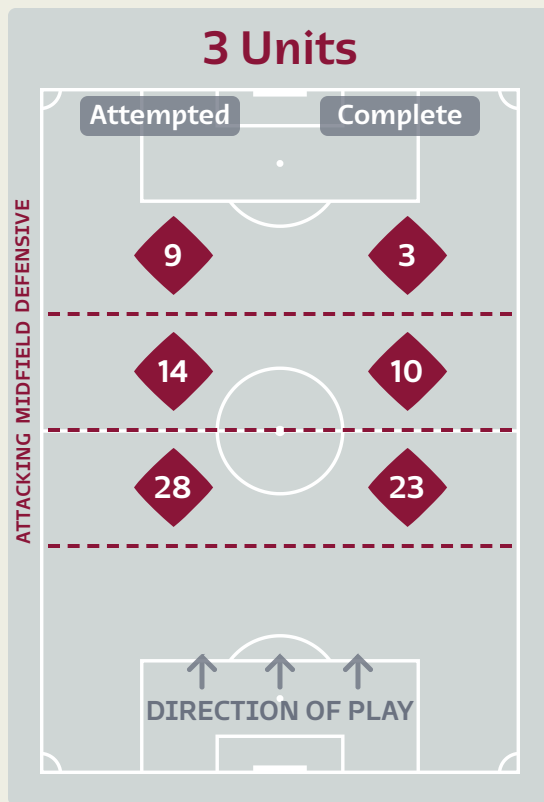
Spain

Attempted Line Breaks

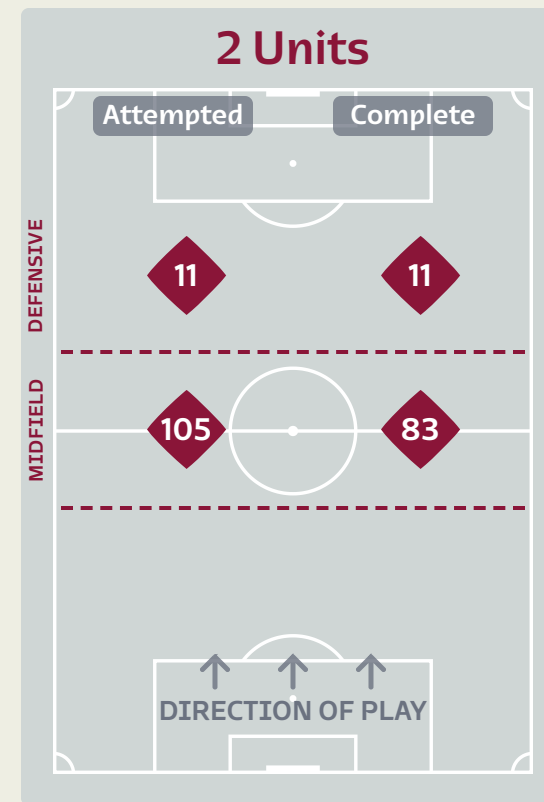
169



Attempted Line Breaks	2
Inside Shape	0
Outside Shape	2



Attempted Line Breaks	51
Inside Shape	26
Outside Shape	25



Attempted Line Breaks	116
Inside Shape	56
Outside Shape	60

Line Breaks

Japan



					4 Units				3 Units			2 Units		Direction			Distribution Type		
#	Player	Line Breaks Attempted	Line Breaks Completed	Line Break Completion %	Attacking Line	Attacking Midfield Line	Midfield Line	Defensive Line	Attacking Line	Midfield Line	Defensive Line	Midfield Line	Defensive Line	Through	Around	Over	Pass	Cross	Ball Progression
12	GONDA Shuichi	16	6	37%	1	0	1	0	3	4	1	5	1	3	0	13	16	0	0
3	TANIGUCHI Shogo	8	8	100%	0	0	0	0	6	2	0	0	0	3	5	0	8	0	0
4	ITAKURA Kou	5	4	80%	0	1	0	0	3	1	0	0	0	3	0	2	5	0	0
5	NAGATOMO Yuto	2	1	50%	0	1	0	0	1	0	0	0	0	1	1	0	2	0	0
11	KUBO Takefusa	4	3	75%	0	0	0	0	0	1	1	0	2	1	2	1	4	0	0
13	MORITA Hidemasa	9	5	55%	0	0	0	1	2	3	0	3	0	4	3	2	8	0	1
14	ITO Junya	7	6	85%	0	0	0	1	3	0	0	2	1	5	0	2	7	0	0
15	KAMADA Daichi	7	4	57%	0	0	0	0	0	4	1	2	0	2	3	2	6	0	1
17	TANAKA Ao	9	2	22%	0	0	0	0	0	4	0	4	1	4	1	4	9	0	0
22	YOSHIDA Maya	5	4	80%	0	0	0	0	1	3	0	1	0	1	1	3	5	0	0
25	MAEDA Daizen	1	1	100%	0	0	0	0	0	0	0	0	1	0	1	0	1	0	0
6	ENDO Wataru	0	0	0%	0	0	0	0	0	0	0	0	0	0	0	0	0	0	0
8	DOAN Ritsu	3	2	66%	0	0	0	0	0	0	0	1	2	0	1	2	1	2	0
9	MITOMA Kaoru	3	3	100%	0	0	0	0	0	1	1	1	0	0	2	1	2	0	1
16	TOMIYASU Takehiro	2	1	50%	0	0	0	0	1	0	0	1	0	0	1	1	2	0	0
18	ASANO Takuma	1	1	100%	0	0	0	0	0	1	0	0	0	1	0	0	1	0	0

Line Breaks



					4 Units				3 Units			2 Units		Direction			Distribution Type		
#	Player	Line Breaks Attempted	Line Breaks Completed	Line Break Completion %	Attacking Line	Attacking Midfield Line	Midfield Line	Defensive Line	Attacking Line	Midfield Line	Defensive Line	Midfield Line	Defensive Line	Through	Around	Over	Pass	Cross	Ball Progression
23	SIMON Unai	4	4	100%	0	0	0	0	4	0	0	0	0	0	2	2	4	0	0
2	AZPILICUETA Cesar	11	10	90%	0	0	0	0	2	1	0	8	0	0	9	2	11	0	0
4	TORRES Pau	28	18	64%	0	0	0	0	10	1	1	16	0	15	8	5	27	0	1
5	BUSQUETS Sergio	16	13	81%	0	0	0	0	1	4	0	11	0	12	4	0	16	0	0
7	MORATA Alvaro	1	0	0%	0	0	0	0	0	0	1	0	0	1	0	0	1	0	0
9	GAVI	5	4	80%	0	0	0	0	1	0	2	2	0	2	3	0	5	0	0
12	WILLIAMS Nico	1	1	100%	0	0	0	0	0	0	0	0	1	0	1	0	1	0	0
14	BALDE Alejandro	8	6	75%	0	0	0	1	4	1	1	1	0	0	5	3	8	0	0
16	RODRI	25	20	80%	1	0	0	0	4	2	0	16	2	4	17	4	25	0	0
21	OLMO Dani	7	6	85%	0	0	0	0	0	2	1	1	3	2	5	0	5	0	2
26	PEDRI	35	29	82%	0	0	0	0	0	0	2	32	1	9	22	4	35	0	0
10	ASENSIO Marco	8	5	62%	0	0	0	0	0	2	0	5	1	3	2	3	8	0	0
11	TORRES Ferran	2	2	100%	0	0	0	0	0	0	1	0	1	1	1	0	1	0	1
18	ALBA Jordi	6	4	66%	0	0	0	0	1	0	0	4	1	1	4	1	5	1	0
20	CARVAJAL Dani	11	9	81%	0	0	0	0	1	1	0	9	0	0	7	4	11	0	0
25	FATI Ansu	1	1	100%	0	0	0	0	0	0	0	0	1	0	1	0	1	0	0

Passing Networks

Japan



#	Passes From ↓ to →	GONDA Shuichi	TANIGUCHI Shogo	ITAKURA Kou	NAGATOMO Yuto	KUBO Takefusa	MORITA Hidemasa	ITO Junya	KAMADA Daichi	TANAKA Ao	YOSHIDA Maya	MAEDA Daizen	ENDO Wataru	DOAN Ritsu	MITOMA Kaoru	TOMIYASU Takehiro	ASANO Takuma
12	GONDA Shuichi	0	0	3	2	0	2	4	1	0	0	0	0	1	0	0	0
3	TANIGUCHI Shogo	1	0	0	2	0	6	1	4	3	2	0	0	0	1	0	0
4	ITAKURA Kou	3	0	0	0	0	1	4	0	3	5	0	0	0	0	0	0
5	NAGATOMO Yuto	1	0	0	0	2	2	0	0	0	0	0	0	0	0	0	0
11	KUBO Takefusa	0	0	0	2	0	1	0	1	1	0	0	0	0	0	0	0
13	MORITA Hidemasa	0	7	2	0	1	0	1	1	4	1	0	0	0	1	1	0
14	ITO Junya	1	0	5	0	2	1	0	0	2	0	1	0	1	1	0	0
15	KAMADA Daichi	0	4	2	0	1	1	0	0	1	1	0	0	0	1	0	0
17	TANAKA Ao	1	2	0	0	1	5	1	1	0	2	1	0	1	2	0	1
22	YOSHIDA Maya	4	1	1	2	0	0	2	3	1	0	0	0	0	0	0	1
25	MAEDA Daizen	0	0	0	0	2	0	0	0	0	0	0	0	0	0	0	0
6	ENDO Wataru	0	0	0	0	0	0	0	0	0	0	0	0	0	0	0	0
8	DOAN Ritsu	0	0	0	0	0	0	0	0	0	0	0	0	0	0	0	0
9	MITOMA Kaoru	0	3	0	0	0	1	0	0	0	0	0	0	1	0	0	1
16	TOMIYASU Takehiro	0	0	0	0	0	1	0	0	0	0	0	0	0	0	0	0
18	ASANO Takuma	0	0	0	0	0	0	1	0	1	0	0	0	0	0	0	0

Top 5 Player to Player Passers		
Player	Passed To	% of Total Team Passes
MORITA Hidemasa	TANIGUCHI Shogo	4.5%
TANIGUCHI Shogo	MORITA Hidemasa	3.9%
ITAKURA Kou	YOSHIDA Maya	3.2%
ITO Junya	ITAKURA Kou	3.2%
TANAKA Ao	MORITA Hidemasa	3.2%

Passing Networks

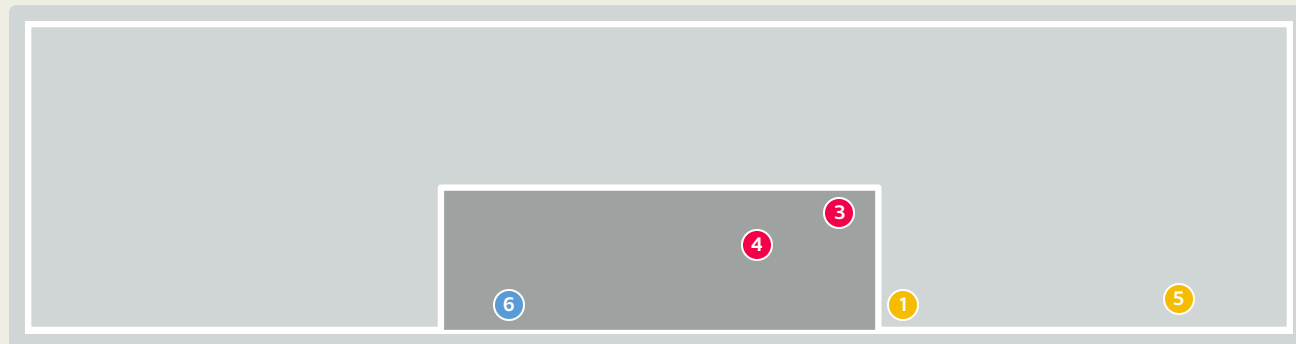
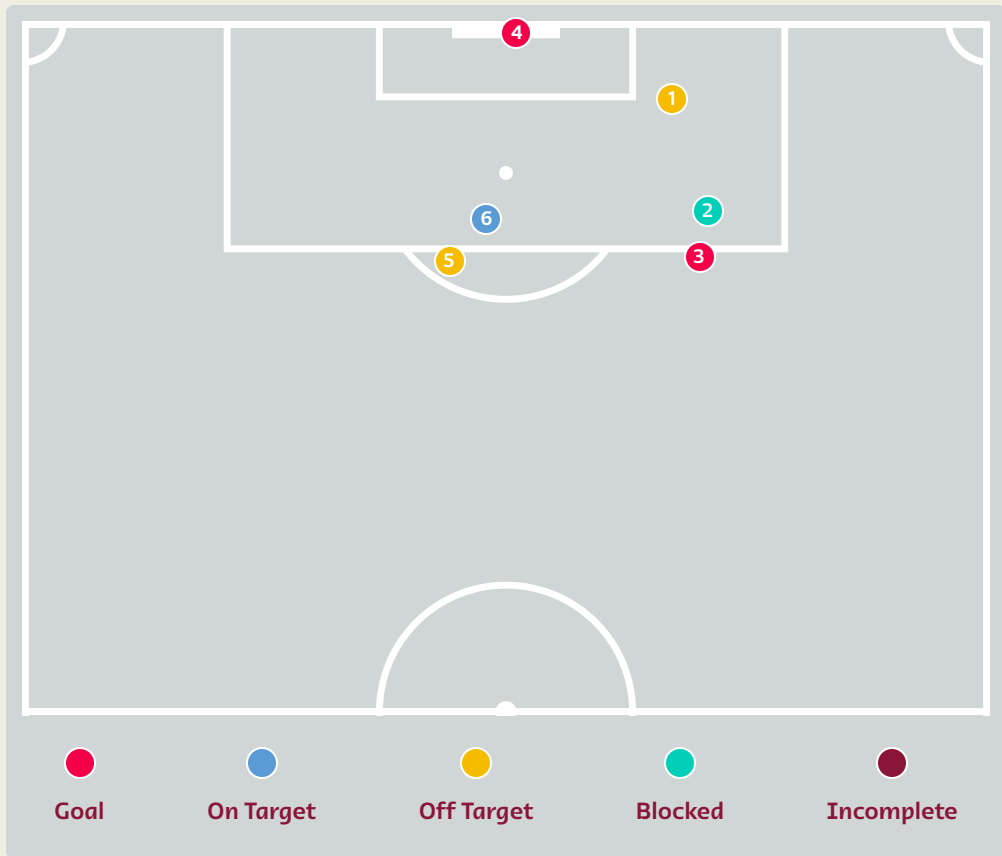


#	Passes From ↓ to →	SIMON Unai	AZPILICUETA Cesar	TORRES Pau	BUSQUETS Sergio	MORATA Alvaro	GAVI	WILLIAMS Nico	BALDE Alejandro	RODRI	OLMO Dani	PEDRI	ASENSIO Marco	TORRES Ferran	ALBA Jordi	CARVAJAL Dani	FATI Ansu
23	SIMON Unai	23	3	13	5	0	2	0	1	6	0	2	0	0	1	2	0
2	AZPILICUETA Cesar	3	23	9	13	1	9	12	1	18	0	2	0	0	0	0	0
4	TORRES Pau	7	8	23	11	4	7	1	21	60	9	15	0	0	12	2	1
5	BUSQUETS Sergio	1	6	9	23	4	3	2	3	15	4	10	1	0	3	4	0
7	MORATA Alvaro	0	3	2	0	23	0	0	0	2	1	2	0	0	0	0	0
9	GAVI	0	5	11	4	0	23	3	0	10	0	4	0	0	0	1	0
12	WILLIAMS Nico	0	11	0	3	0	4	23	0	4	0	0	0	0	0	0	0
14	BALDE Alejandro	2	1	23	1	0	0	0	23	8	8	10	1	0	0	0	0
16	RODRI	10	25	52	13	1	10	4	9	23	4	21	12	8	2	18	1
21	OLMO Dani	0	0	6	1	0	1	0	8	4	23	4	4	0	3	3	0
26	PEDRI	2	3	21	4	2	3	0	11	33	11	23	2	1	9	3	6
10	ASENSIO Marco	0	0	3	0	0	0	0	0	3	1	3	23	1	2	3	3
11	TORRES Ferran	0	0	0	1	0	0	0	0	2	5	1	0	23	0	3	0
18	ALBA Jordi	2	0	2	2	0	0	0	0	5	0	25	3	0	23	0	6
20	CARVAJAL Dani	0	0	8	2	0	1	0	0	9	3	5	8	5	2	23	0
25	FATI Ansu	0	0	0	0	0	0	0	0	0	1	5	0	0	11	0	23

Top 5 Player to Player Passers		
Player	Passed To	% of Total Team Passes
TORRES Pau	RODRI	6.2%
RODRI	TORRES Pau	5.4%
PEDRI	RODRI	3.4%
RODRI	AZPILICUETA Cesar	2.6%
ALBA Jordi	PEDRI	2.6%

Attempts at Goal

Japan



Key	Outcome	Shots
●	Goals	2
●	On Target	1
●	Off Target	2
●	Blocked	1
●	Incomplete	0

Attempts at Goal

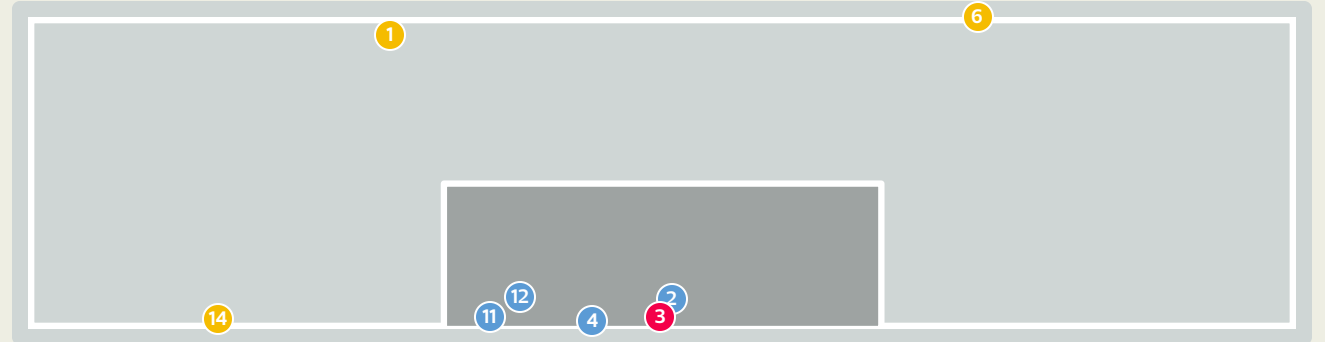
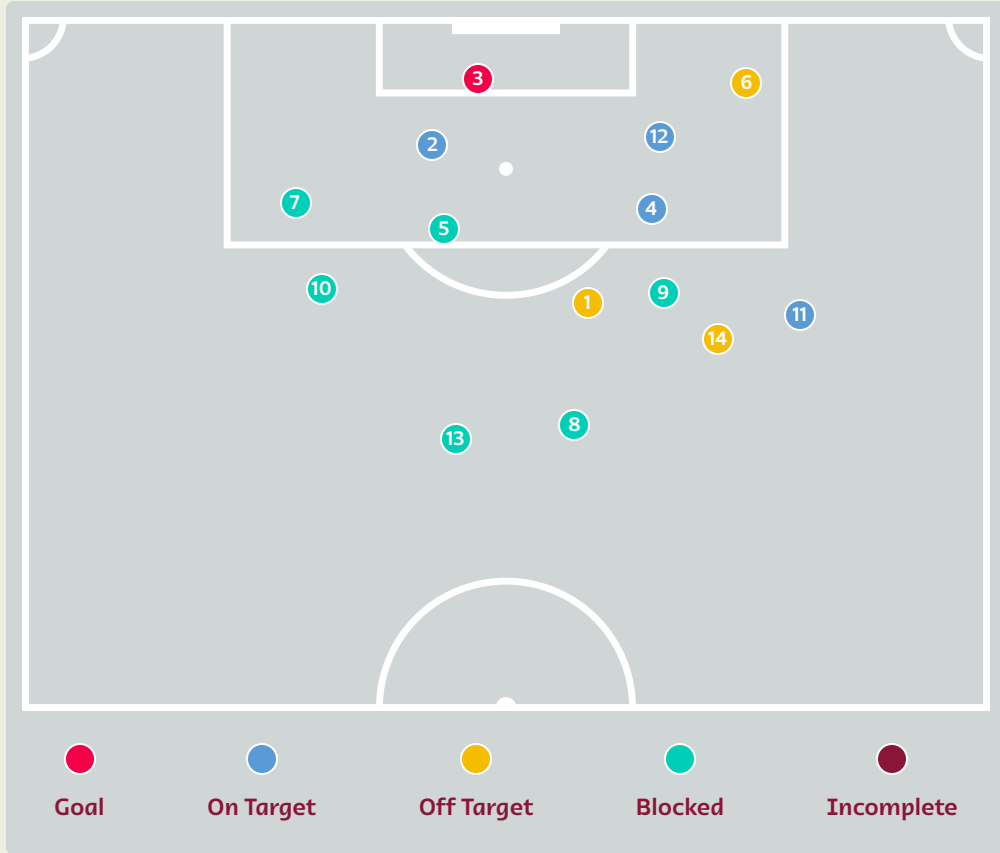
Japan

Time	Player	Outcome	Body Part	Delivery Type
7	14 ITO Junya	Off Target	Right Foot	Pass
35	15 KAMADA Daichi	Incomplete - Blocked	Right Foot	Ball Progression
47	8 DOAN Ritsu	On Target - Goal	Left Foot	Ball Progression
50	17 TANAKA Ao	On Target - Goal	Lower Body	Cross
69	18 ASANO Takuma	Off Target	Right Foot	Pass
82	4 ITAKURA Kou	On Target - Saved	Head	Freekick

Spain



Attempts at Goal



Key	Outcome	Shots
●	Goals	1
●	On Target	4
●	Off Target	3
●	Blocked	6
●	Incomplete	0

Attempts at Goal

Spain

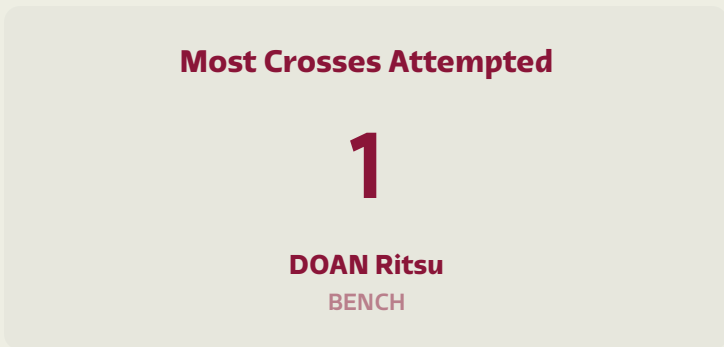
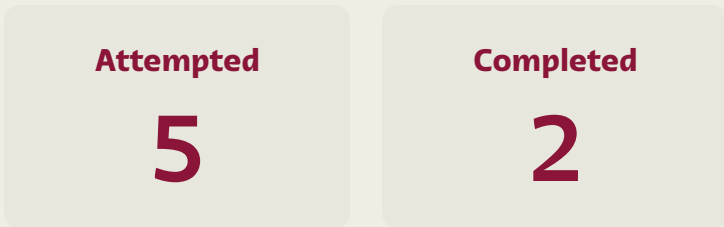
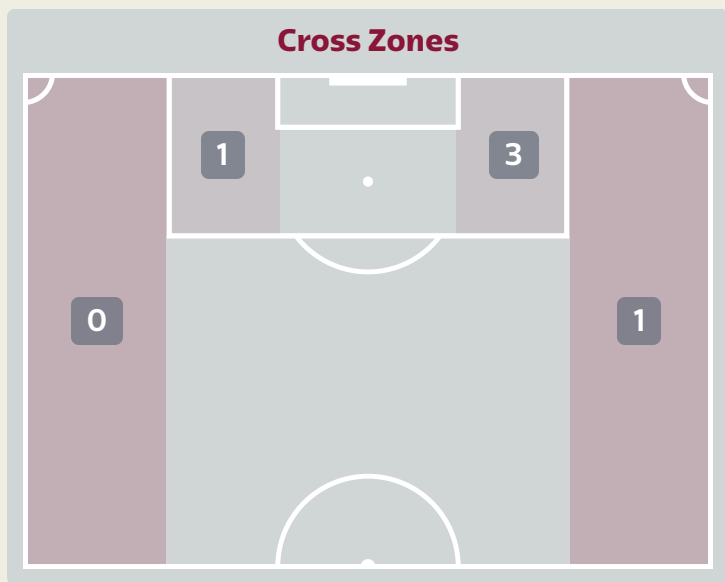
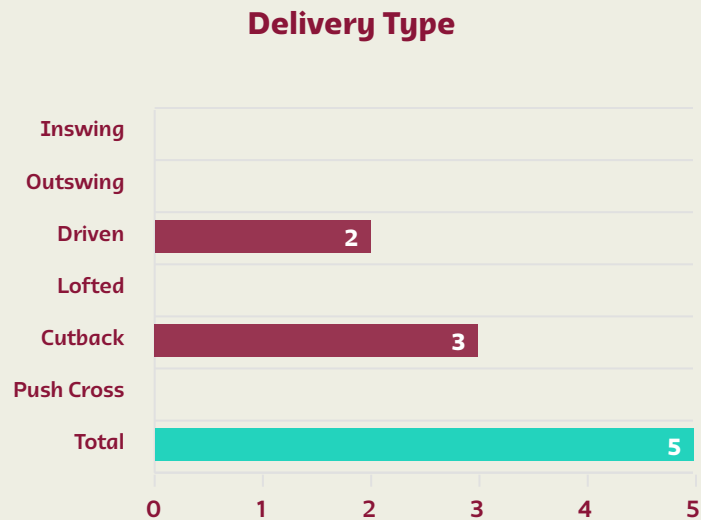
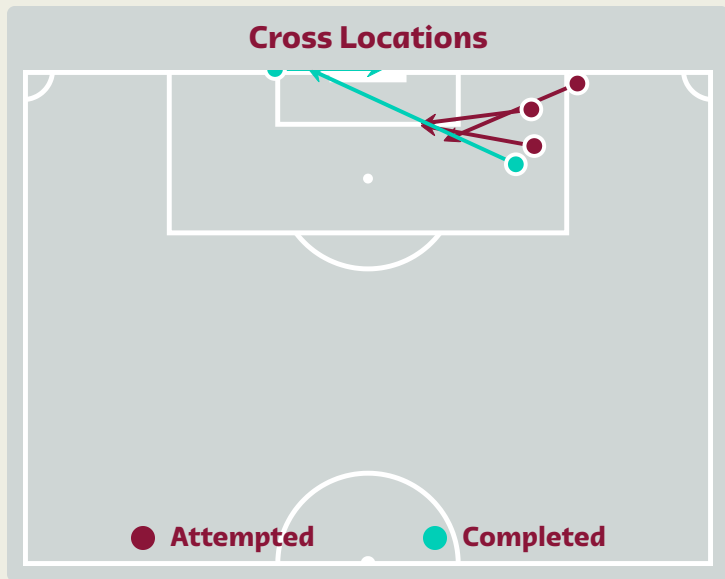


Time	Player	Outcome	Body Part	Delivery Type
6	5 BUSQUETS Sergio	Off Target	Left Foot	Loose Ball
8	7 MORATA Alvaro	On Target - Saved	Head	Cross
11	7 MORATA Alvaro	On Target - Goal	Head	Pass
22	7 MORATA Alvaro	On Target - Saved	Right Foot	Pass
41	21 OLMO Dani	Incomplete - Blocked	Right Foot	Pass
45	12 WILLIAMS Nico	Deflected Off Target - Defensive Event	Right Foot	Pass
73	10 ASENSIO Marco	Incomplete - Blocked	Left Foot	Pass
79	21 OLMO Dani	Incomplete - Blocked	Right Foot	Pass
84	10 ASENSIO Marco	Incomplete - Blocked	Left Foot	Pass
88	18 ALBA Jordi	Incomplete - Blocked	Right Foot	Loose Ball
88	10 ASENSIO Marco	On Target - Saved	Left Foot	Pass
89	21 OLMO Dani	On Target - Saved	Right Foot	Pass
93	4 TORRES Pau	Incomplete - Blocked	Left Foot	Pass
95	21 OLMO Dani	Off Target	Right Foot	Pass

Japan

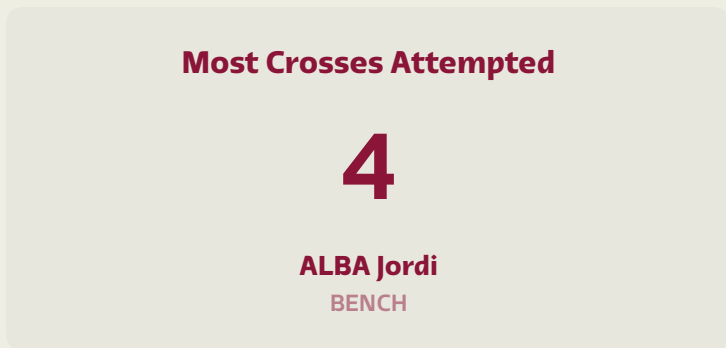
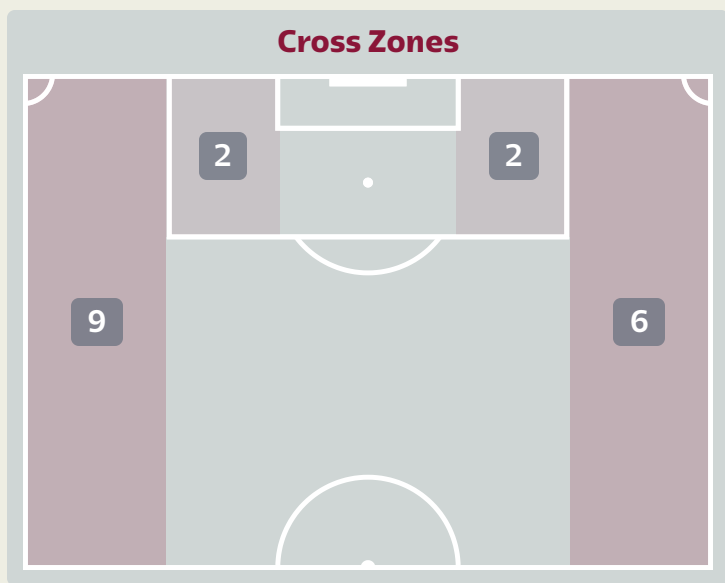
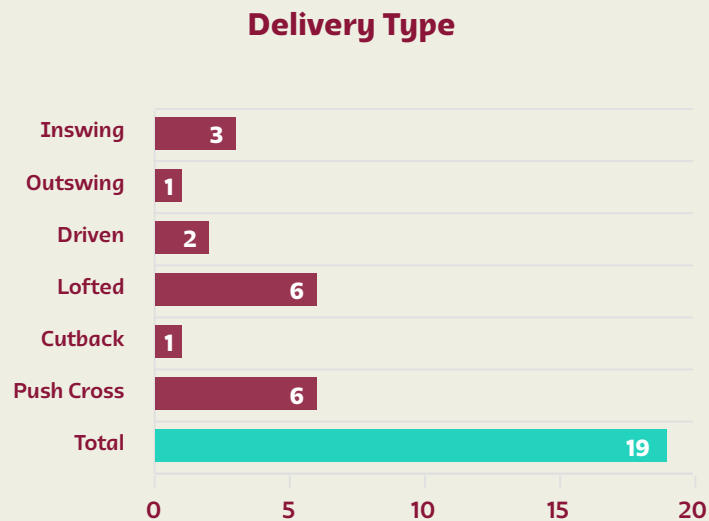
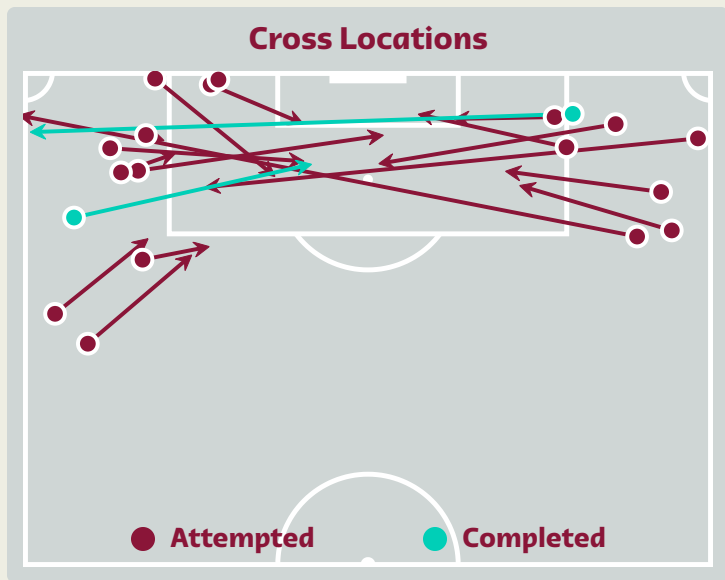


Crosses (Open Play)



#	Player	Inswing	Outswing	Driven	Lofted	Cutback	Push Cross	Total Attempted
12	GONDA Shuichi	0	0	0	0	0	0	0
3	TANIGUCHI Shogo	0	0	0	0	0	0	0
4	ITAKURA Kou	0	0	0	0	0	0	0
5	NAGATOMO Yuto	0	0	0	0	0	0	0
11	KUBO Takefusa	0	0	0	0	1	0	1
13	MORITA Hidemasa	0	0	0	0	0	0	0
14	ITO Junya	0	0	1	0	0	0	1
15	KAMADA Daichi	0	0	0	0	0	0	0
17	TANAKA Ao	0	0	0	0	0	0	0
22	YOSHIDA Maya	0	0	0	0	0	0	0
25	MAEDA Daizen	0	0	0	0	1	0	1
6	ENDO Wataru	0	0	0	0	0	0	0
8	DOAN Ritsu	0	0	1	0	0	0	1
9	MITOMA Kaoru	0	0	0	0	1	0	1
16	TOMIYASU Takehiro	0	0	0	0	0	0	0
18	ASANO Takuma	0	0	0	0	0	0	0

Crosses (Open Play)



#	Player	Inswing	Outswing	Driven	Lofted	Cutback	Push Cross	Total Attempted
23	SIMON Unai	0	0	0	0	0	0	0
2	AZPILICUETA Cesar	0	0	0	0	0	0	0
4	TORRES Pau	0	0	0	0	0	0	0
5	BUSQUETS Sergio	0	0	0	0	0	0	0
7	MORATA Alvaro	0	0	0	0	0	0	0
9	GAVI	0	0	0	1	0	1	2
12	WILLIAMS Nico	0	0	0	0	0	1	1
14	BALDE Alejandro	0	0	0	0	1	1	2
16	RODRI	0	0	0	0	0	0	0
21	OLMO Dani	2	0	0	0	0	1	3
26	PEDRI	0	0	0	0	0	0	0
10	ASENSIO Marco	1	0	1	1	0	0	3
11	TORRES Ferran	0	1	0	2	0	0	3
18	ALBA Jordi	0	0	0	2	0	2	4
20	CARVAJAL Dani	0	0	0	0	0	0	0
25	FATI Ansu	0	0	1	0	0	0	1

Offering to Receive

Japan



315

Total Offers Made

101

Total Offers Received

Most Offers

55

TANAKA Ao

RIGHT CENTRE MIDFIELD

75

Offers Made in Final Third

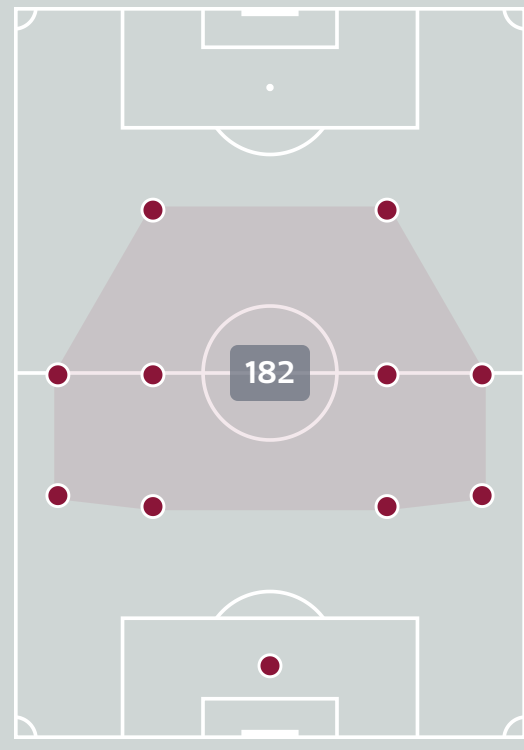
138

Offers Made in Middle Third

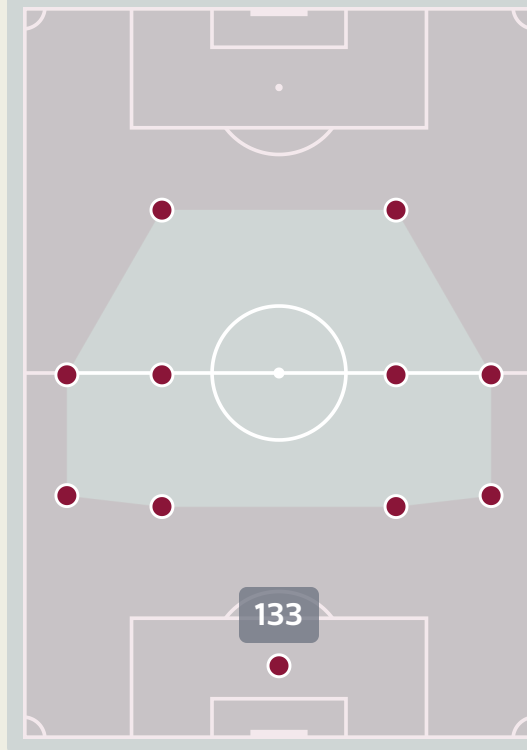
102

Offers Made in Defensive Third

Offers Made Inside Shape



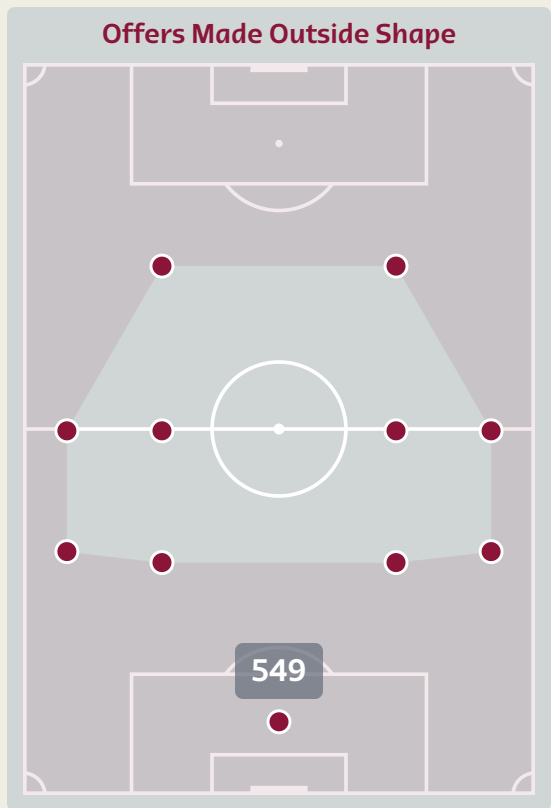
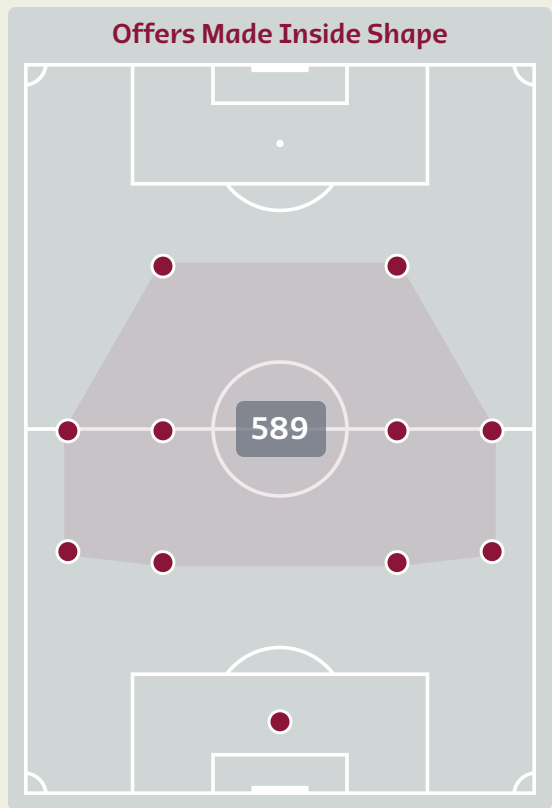
Offers Made Outside Shape



#	Player	Offers Made	Offers Received	% Made & Received
12	GONDA Shuichi	4	2	50%
3	TANIGUCHI Shogo	16	9	56.2%
4	ITAKURA Kou	19	7	36.8%
5	NAGATOMO Yuto	19	7	36.8%
11	KUBO Takefusa	26	7	26.9%
13	MORITA Hidemasa	28	13	46.4%
14	ITO Junya	26	14	53.8%
15	KAMADA Daichi	29	8	27.6%
17	TANAKA Ao	55	15	27.3%
22	YOSHIDA Maya	23	8	34.8%
25	MAEDA Daizen	23	2	8.7%
6	ENDO Wataru	1	1	100%
8	DOAN Ritsu	17	3	17.6%
9	MITOMA Kaoru	12	3	25%
16	TOMIYASU Takehiro	1	0	0%
18	ASANO Takuma	16	2	12.5%



Offering to Receive



#	Player	Offers Made	Offers Received	% Made & Received
23	SIMON Unai	10	4	40%
2	AZPILICUETA Cesar	68	43	63.2%
4	TORRES Pau	88	48	54.5%
5	BUSQUETS Sergio	84	26	31%
7	MORATA Alvaro	43	4	9.3%
9	GAVI	98	32	32.7%
12	WILLIAMS Nico	50	15	30%
14	BALDE Alejandro	93	35	37.6%
16	RODRI	115	73	63.5%
21	OLMO Dani	103	36	35%
26	PEDRI	125	67	53.6%
10	ASENSIO Marco	44	12	27.3%
11	TORRES Ferran	53	11	20.8%
18	ALBA Jordi	57	34	59.6%
20	CARVAJAL Dani	38	17	44.7%
25	FATI Ansu	69	12	17.4%

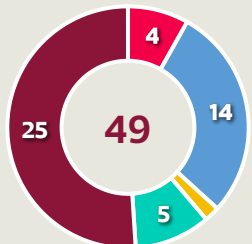
Japan



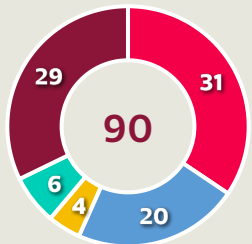
Movement to Receive

Movement Types by Phase

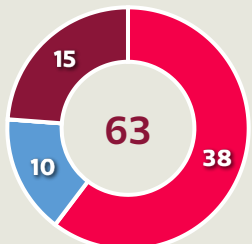
Final Third Phase



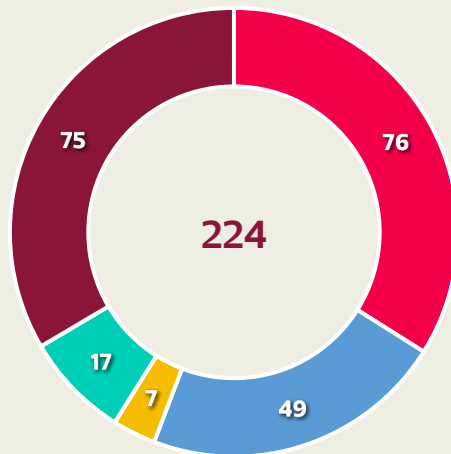
Progression Phase



Build Up Phase



All Movement Types

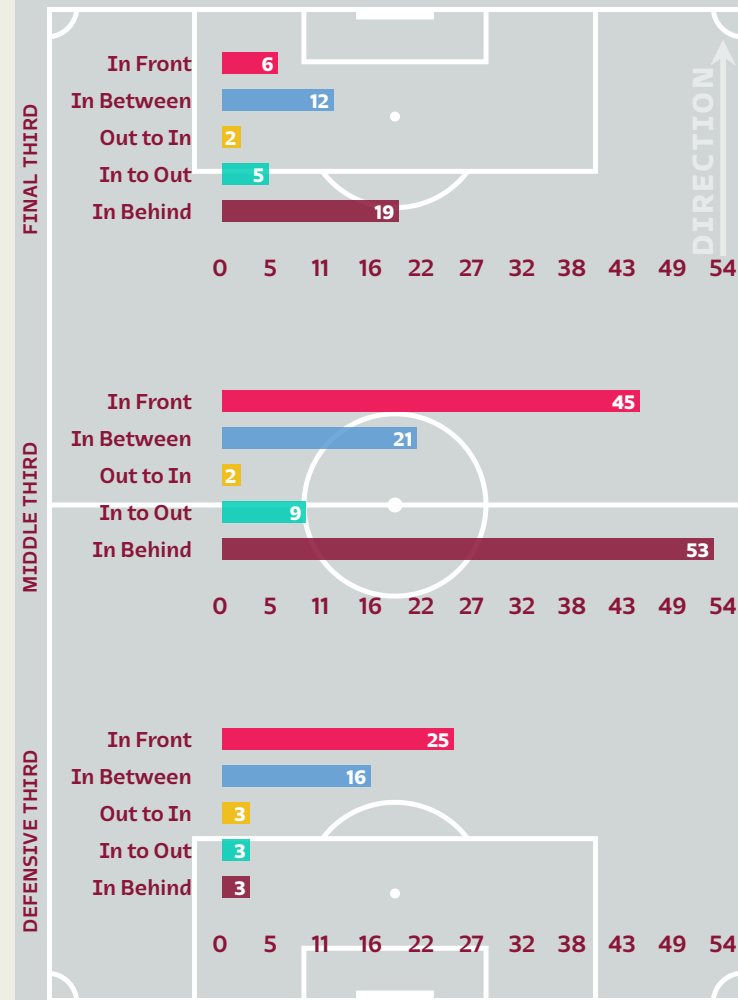


- In Front
- In Between
- Out to In
- In to Out
- In Behind

Top Ranked Players

Type	Player	Movements
In Front	17 TANAKA Ao	23
In Between	17 TANAKA Ao	23
Out to In	14 ITO Junya	2
In to Out	11 KUBO Takefusa	4
In Behind	25 MAEDA Daizen	17

Movement Types Pitch Third

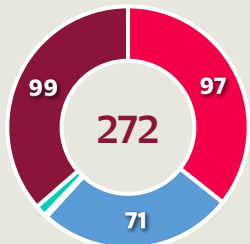




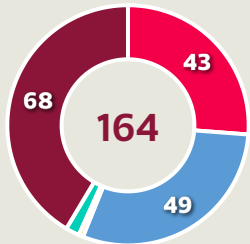
Movement to Receive

Movement Types by Phase

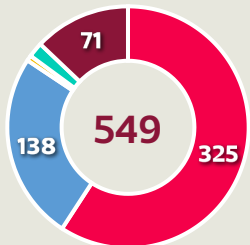
Final Third Phase



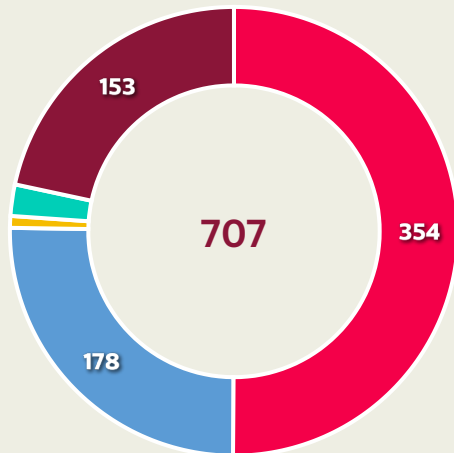
Progression Phase



Build Up Phase



All Movement Types

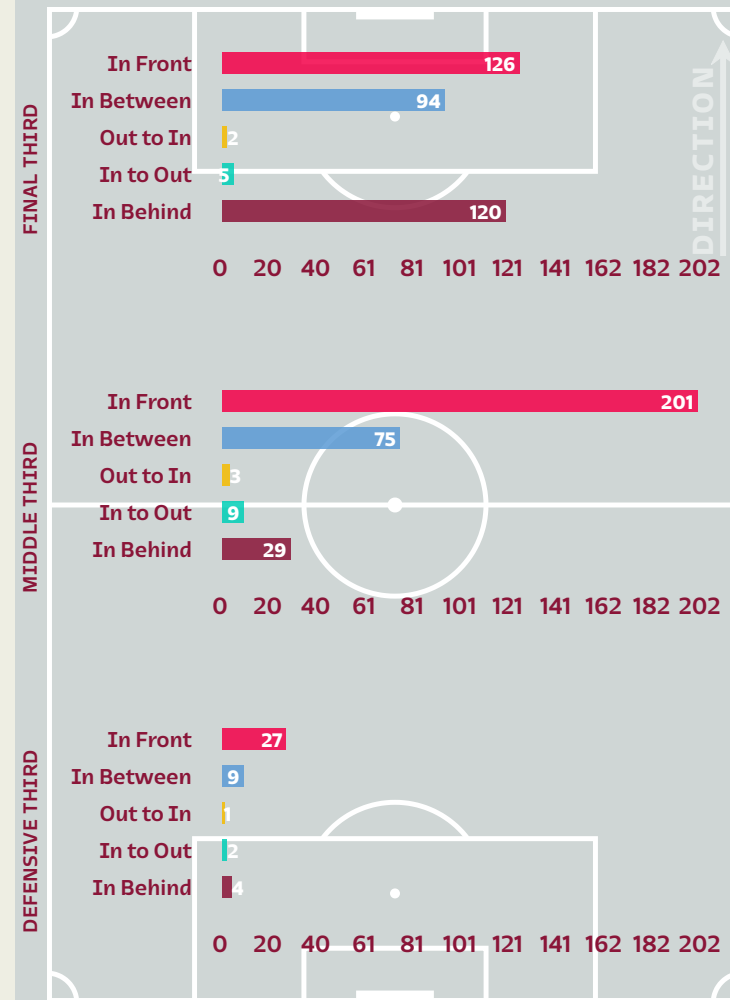


- In Front
- In Between
- Out to In
- In to Out
- In Behind

Top Ranked Players

Type	Player	Movements
In Front	5 BUSQUETS Sergio	59
In Between	21 OLMO Dani	39
Out to In	21 OLMO Dani	3
In to Out	9 GAVI	6
In Behind	25 FATI Ansu	39

Movement Types Pitch Third





FIFA WORLD CUP
Qatar 2022



OUT OF POSSESSION



Japan v Spain

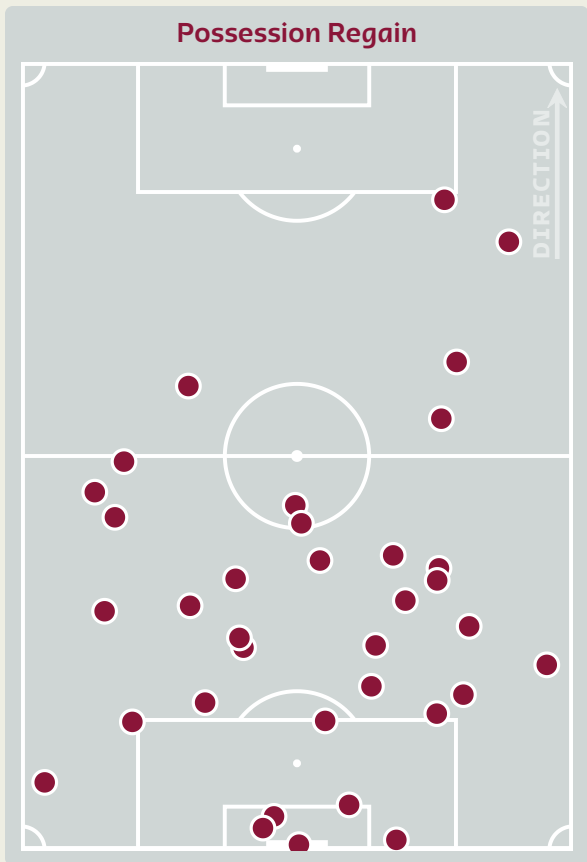
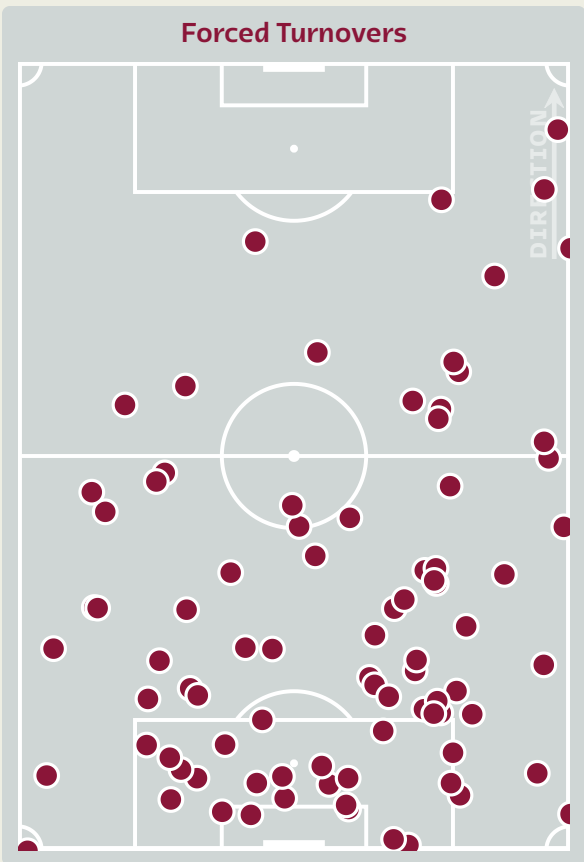


Japan

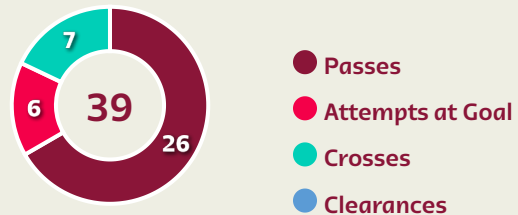


Defensive Actions

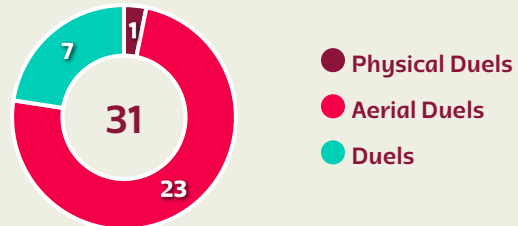
85 Forced Turnovers	35 Possession Regained	10 Interceptions	29 Tackles	1.72 Possession Actions / Defensive Action
-------------------------------	----------------------------------	----------------------------	----------------------	--



Blocks



Possession Contests



Most Possession Regains

8

MORITA Hidemasa
LEFT CENTRE MIDFIELD

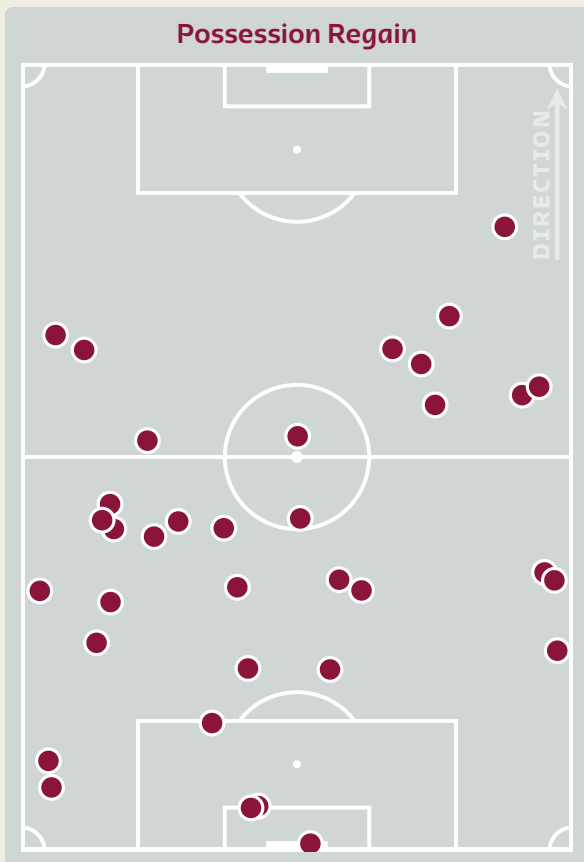
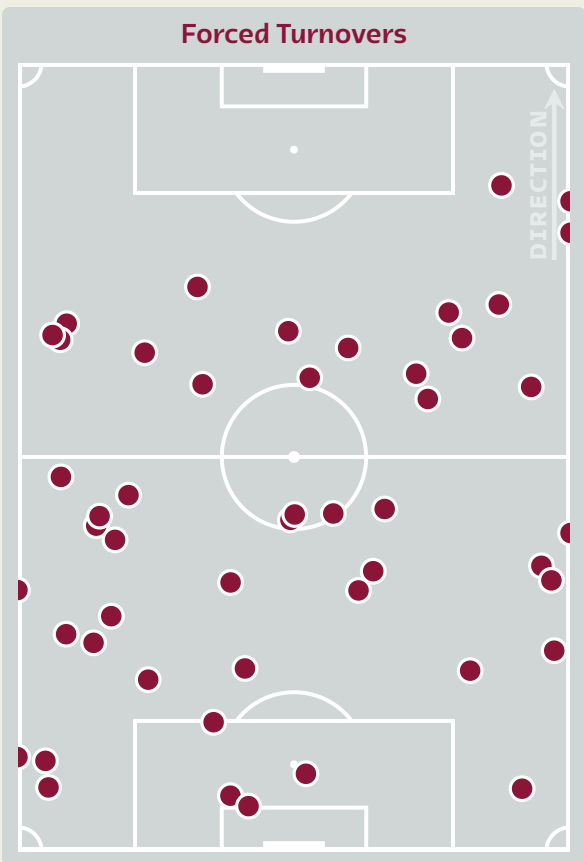
#	Player	Total Possession Regains
12	GONDA Shuichi	4
3	TANIGUCHI Shogo	2
4	ITAKURA Kou	3
5	NAGATOMO Yuto	2
11	KUBO Takefusa	2
13	MORITA Hidemasa	8
14	ITO Junya	3
15	KAMADA Daichi	0
17	TANAKA Ao	2
22	YOSHIDA Maya	3
25	MAEDA Daizen	3
6	ENDO Wataru	0
8	DOAN Ritsu	2
9	MITOMA Kaoru	1
16	TOMIYASU Takehiro	0
18	ASANO Takuma	0

Spain

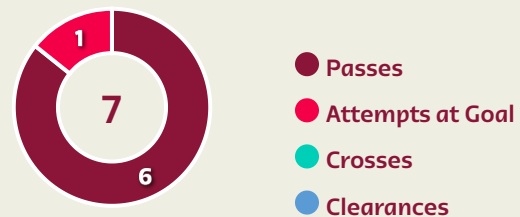


Defensive Actions

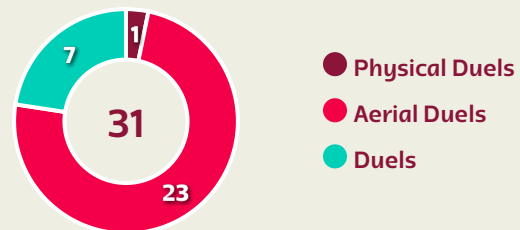
49 Forced Turnovers	35 Possession Regained	11 Interceptions	16 Tackles	18.82 Possession Actions / Defensive Action
-------------------------------	----------------------------------	----------------------------	----------------------	--



Blocks



Possession Contests



Most Possession Regains

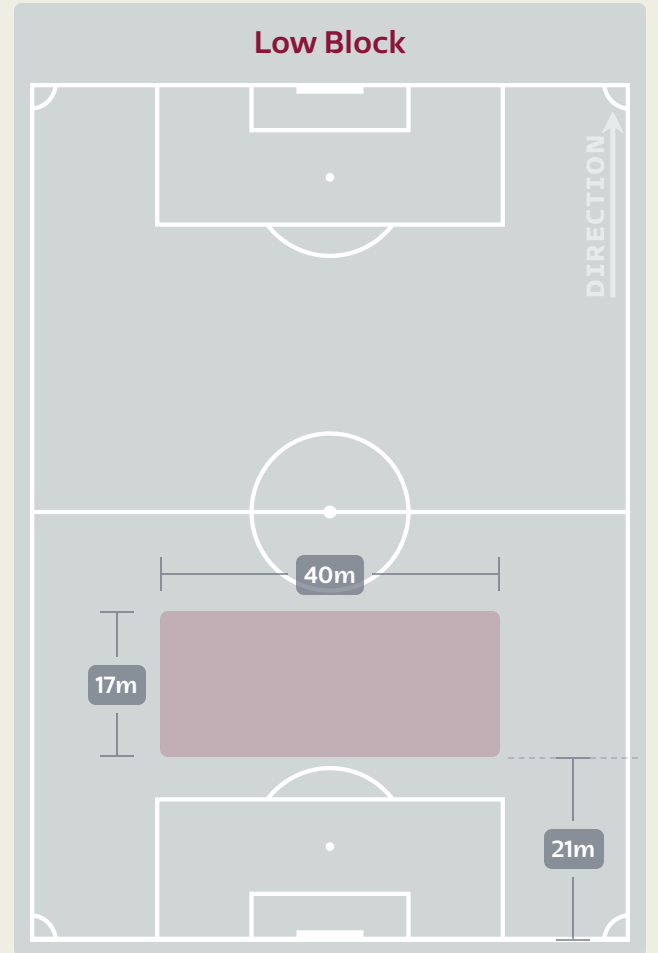
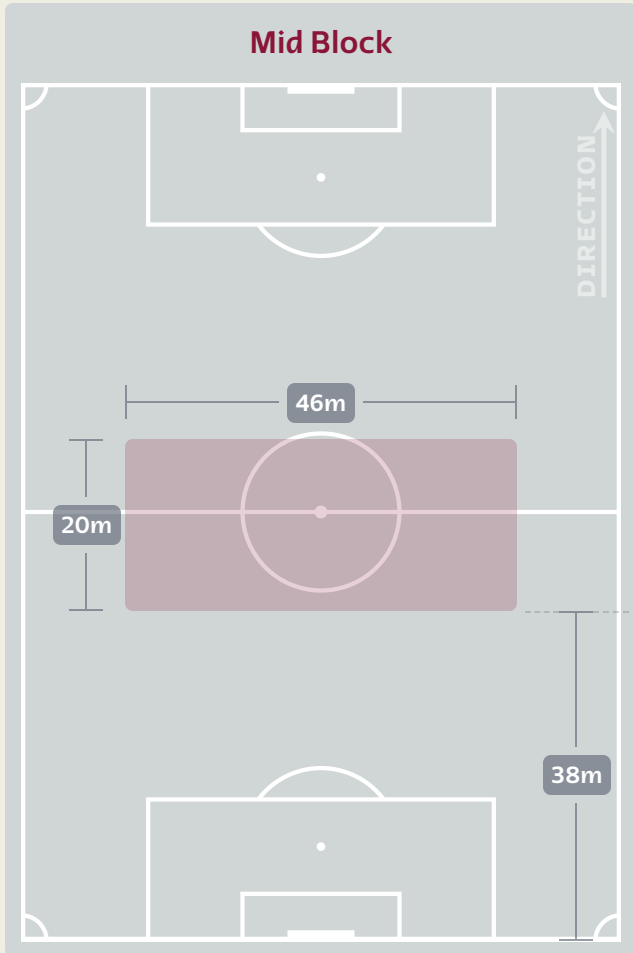
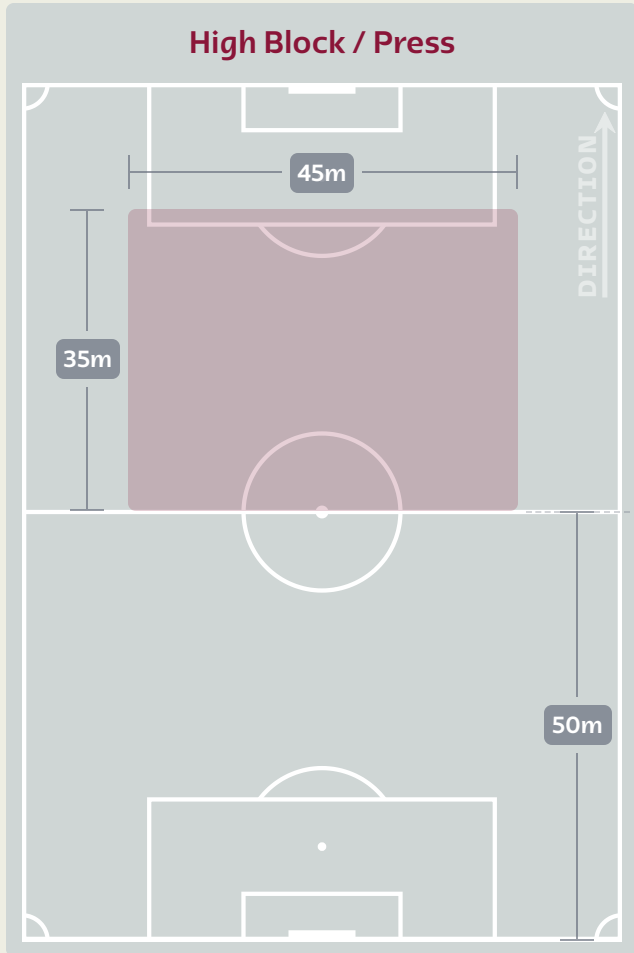
6

RODRI
RIGHT CENTRE BACK

#	Player	Total Possession Regains
23	SIMON Unai	2
2	AZPILICUETA Cesar	3
4	TORRES Pau	4
5	BUSQUETS Sergio	3
7	MORATA Alvaro	1
9	GAVI	2
12	WILLIAMS Nico	1
14	BALDE Alejandro	4
16	RODRI	6
21	OLMO Dani	0
26	PEDRI	3
10	ASENSIO Marco	1
11	TORRES Ferran	1
18	ALBA Jordi	1
20	CARVAJAL Dani	3
25	FATI Ansu	0

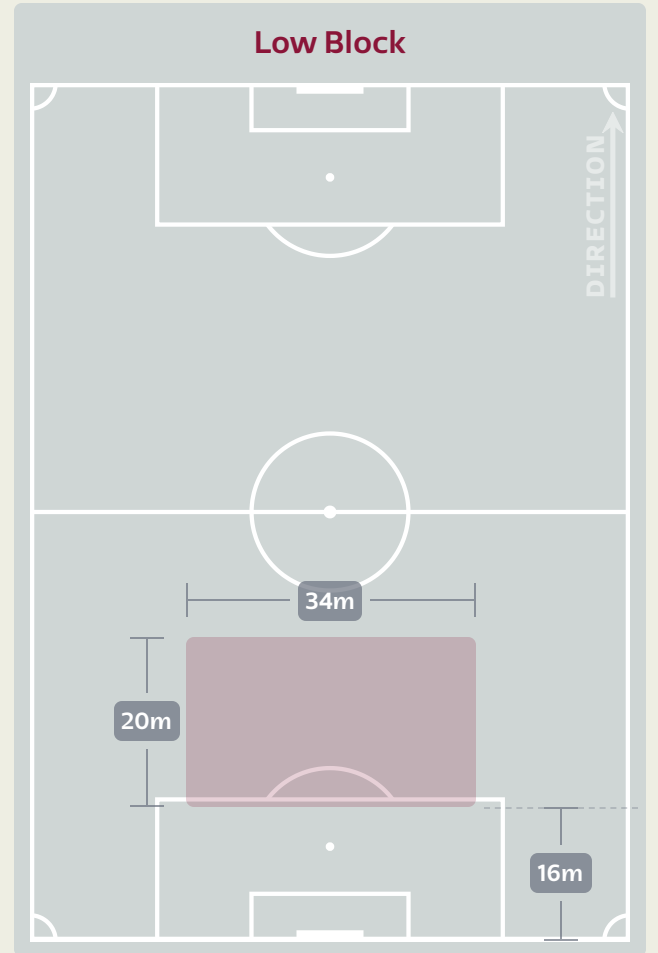
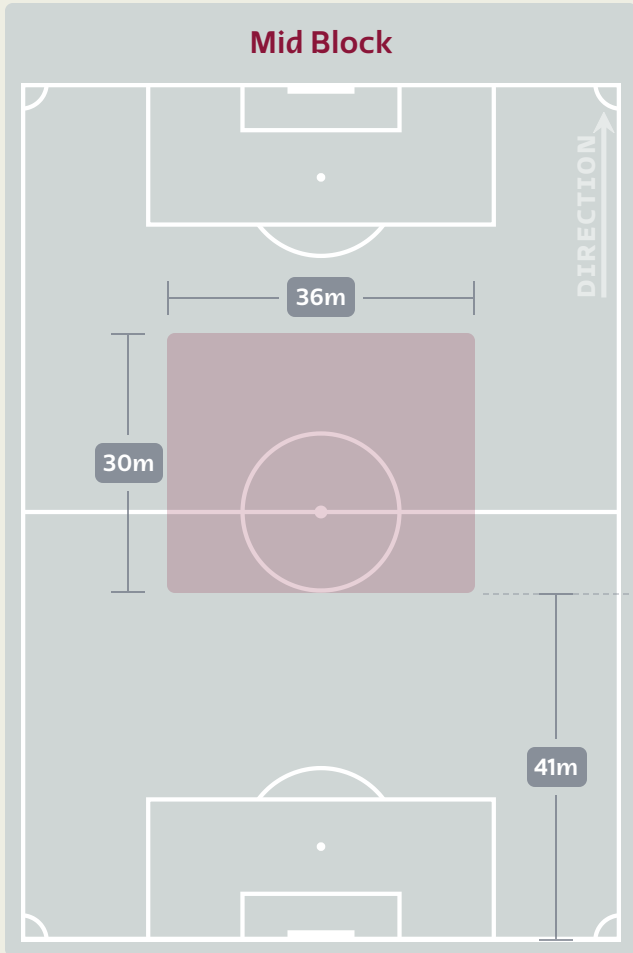
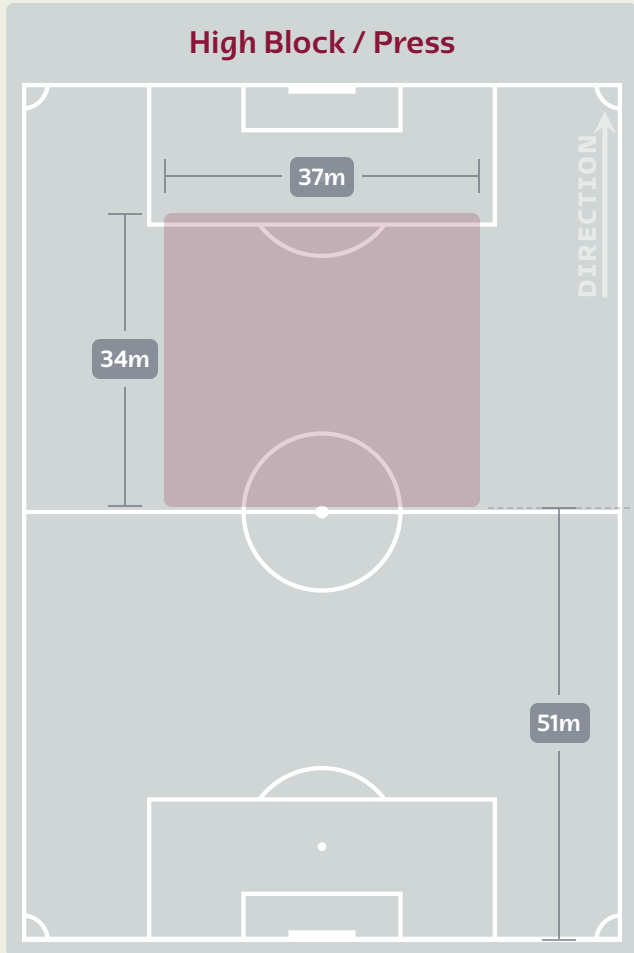
Defensive Line Height & Team Length

Japan



Defensive Line Height & Team Length

Spain

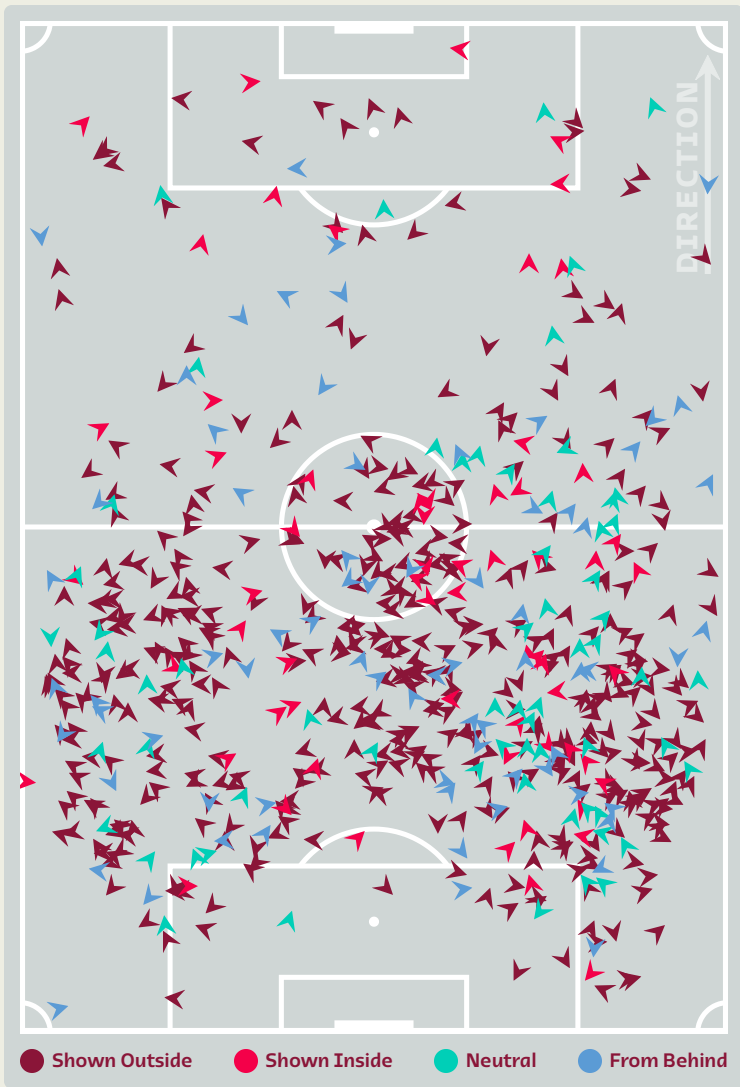


Defensive Pressure



Japan

Spain

637	Total Pressures	150
62	Direct Pressures	25
1.3s	Avg Pressure Duration	1.58s
85	Forced Turnovers	49
29.76s	Ball Recovery Time	6.34s
385	Pushing on into Pressing	78
791	Pushing on	173
63	Pressing Direction Inside	38
438	Pressing Direction Outside	70

Most Direct Pressures

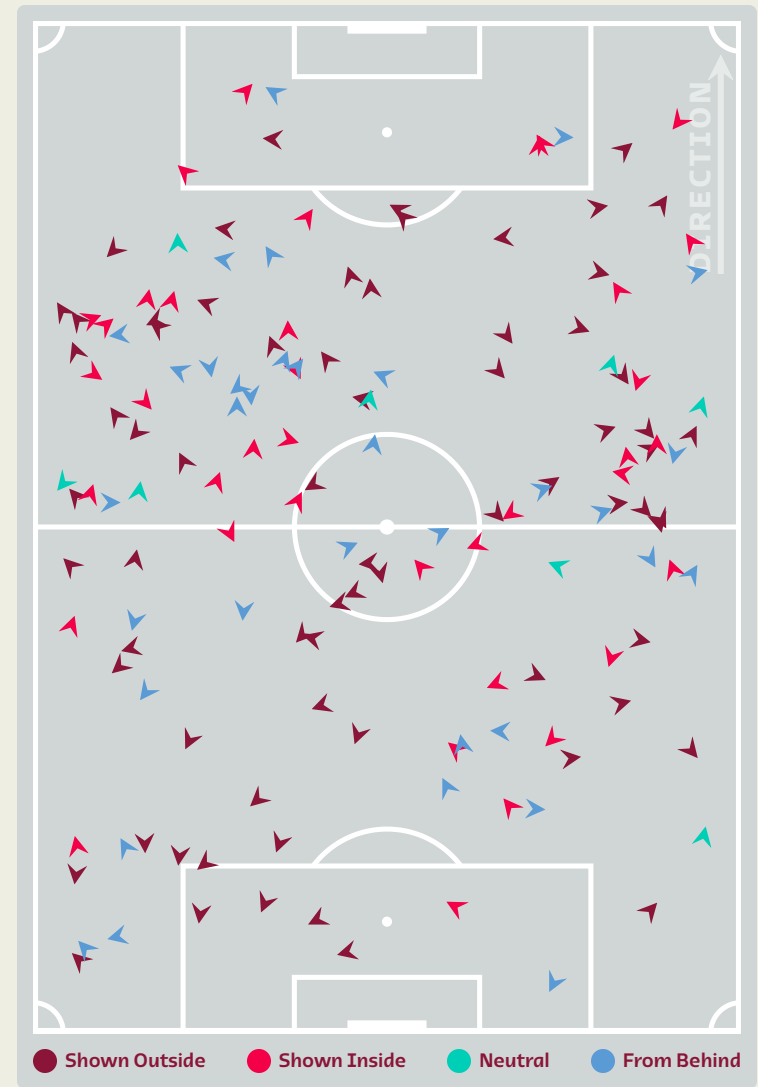
13

MITOMA Kaoru
BENCH

Most Direct Pressures

6

BALDE Alejandro
LEFT BACK





FIFA WORLD CUP
Qatar 2022



GOALKEEPING



Japan v Spain

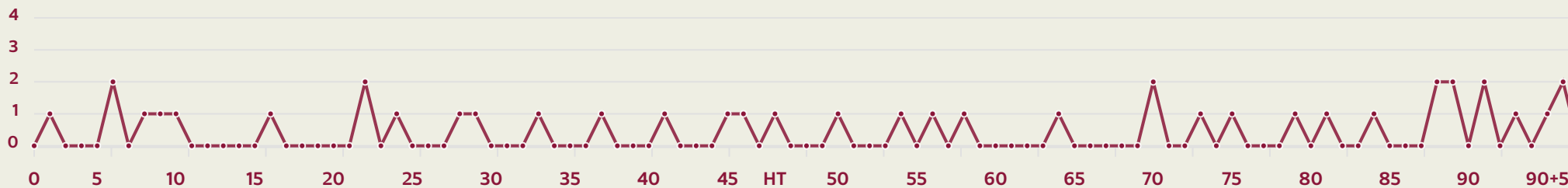


Goalkeeping Involvement



Japan

Japan GK Involvement Timeline



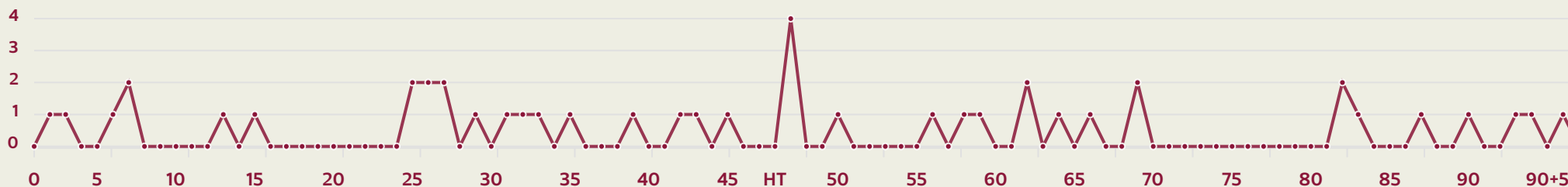
41

Total Involvements



Spain

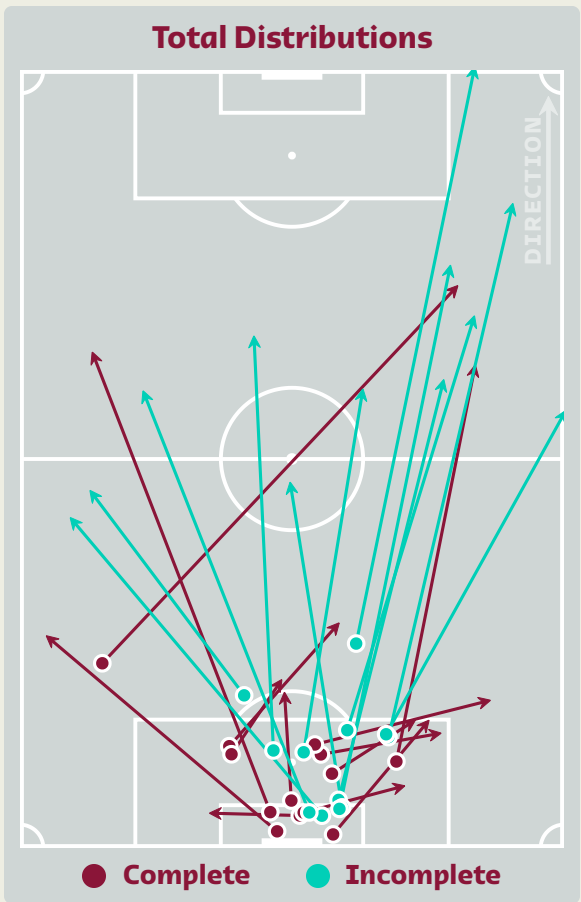
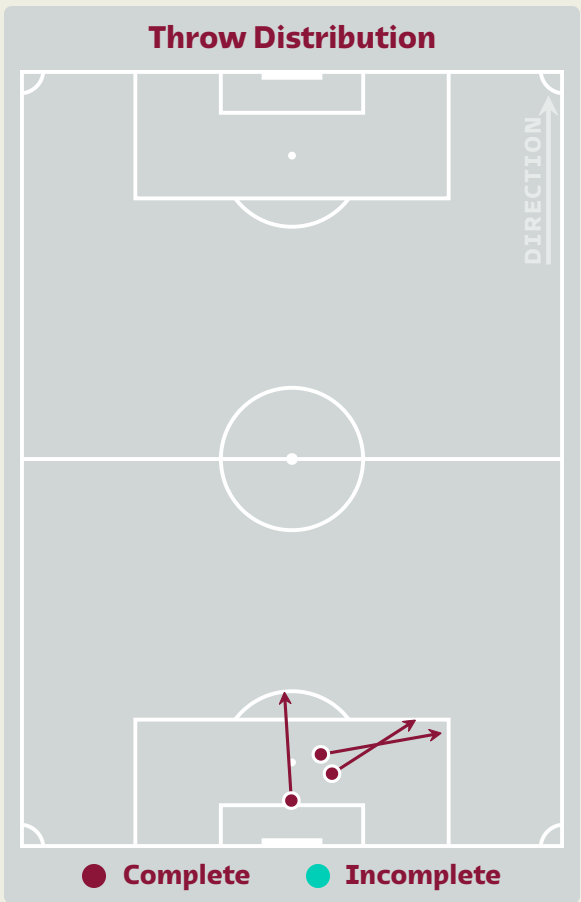
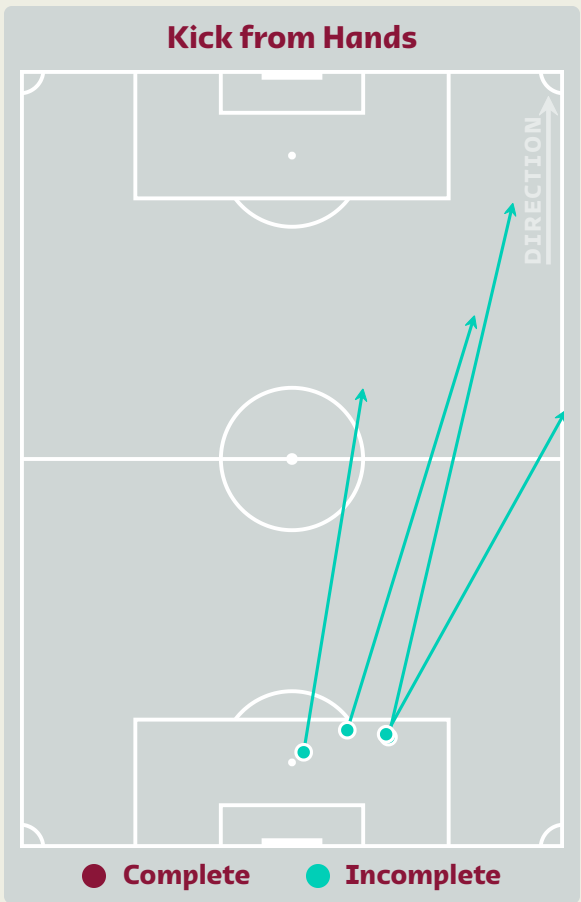
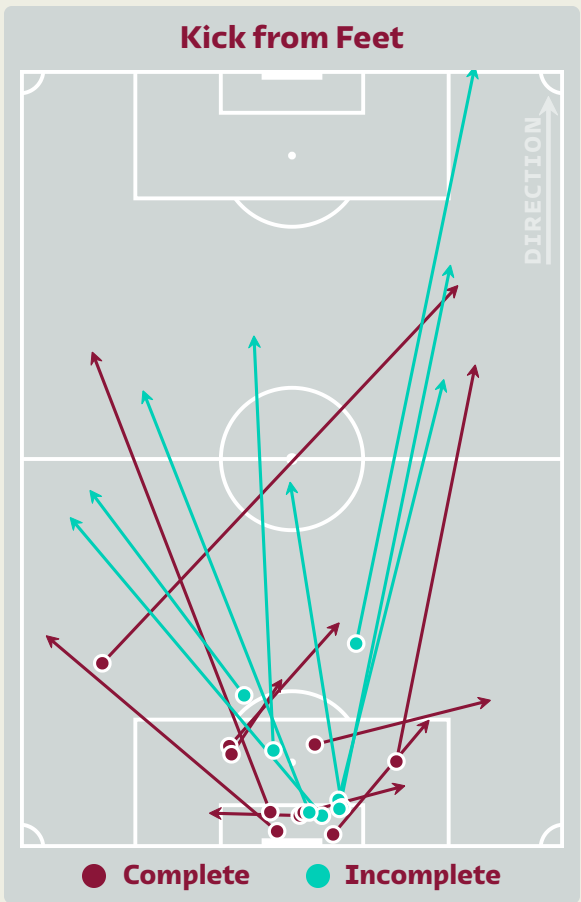
Spain GK Involvement Timeline



44

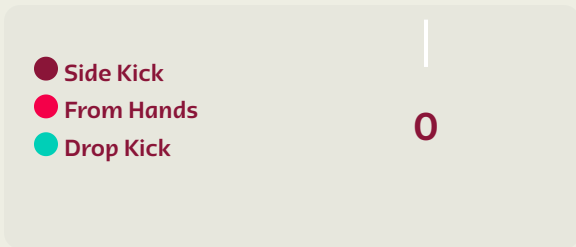
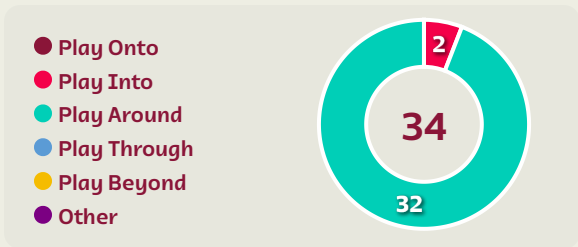
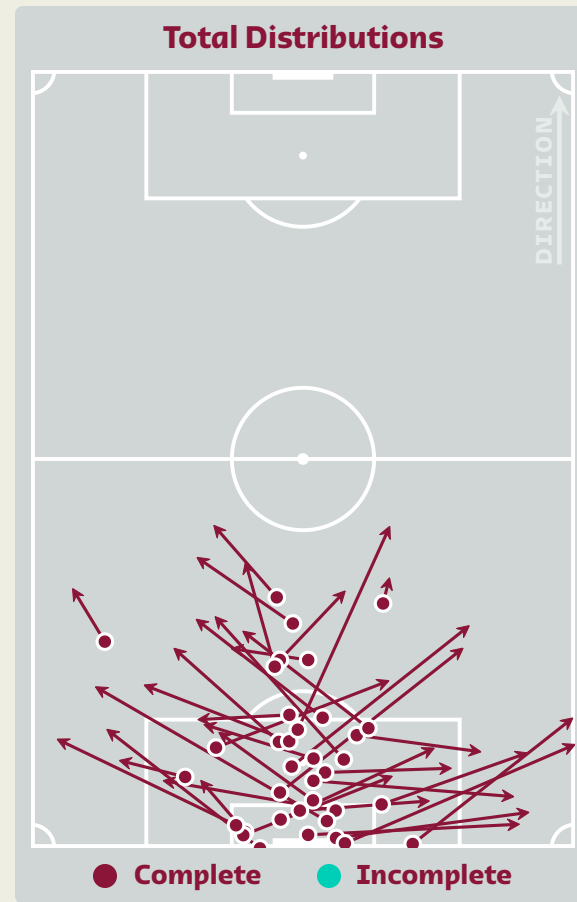
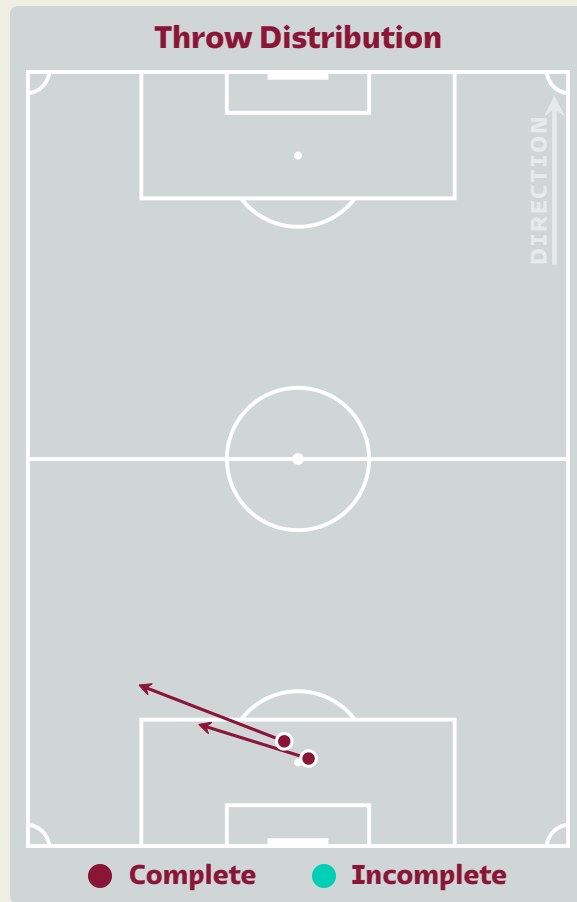
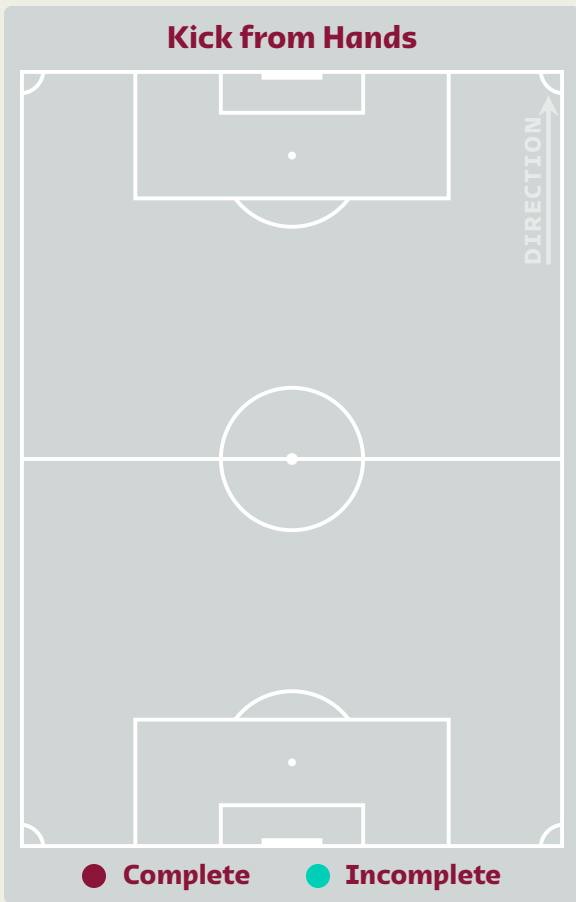
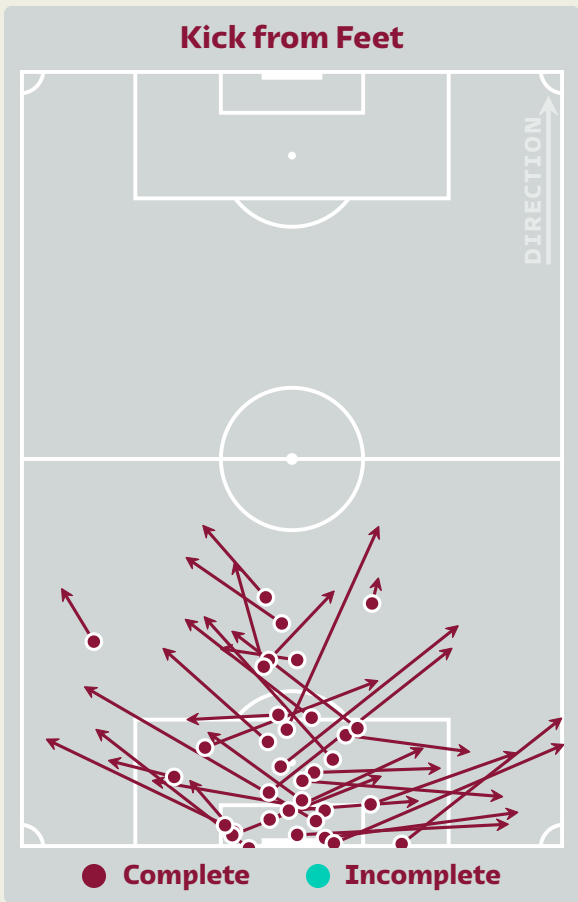
Total Involvements

Goalkeeping Distribution



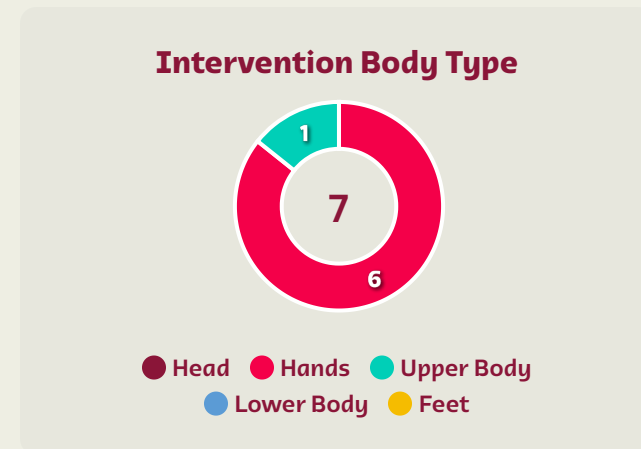
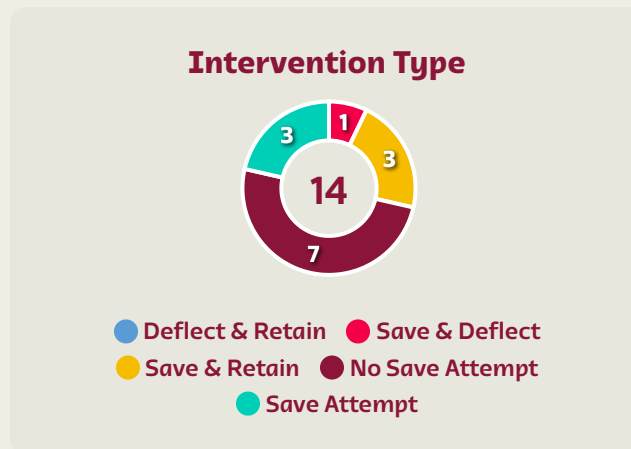
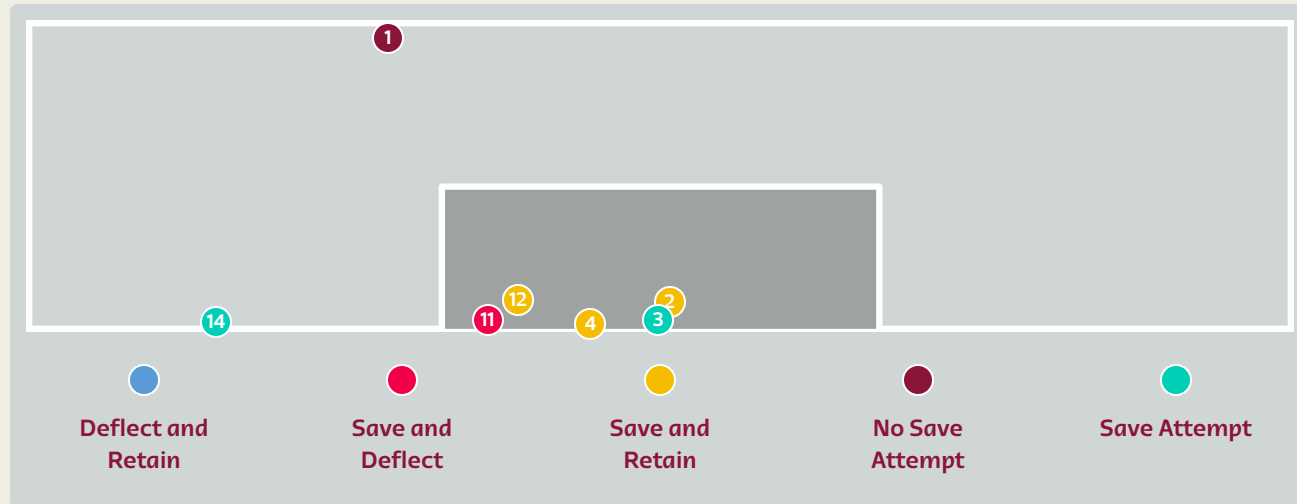
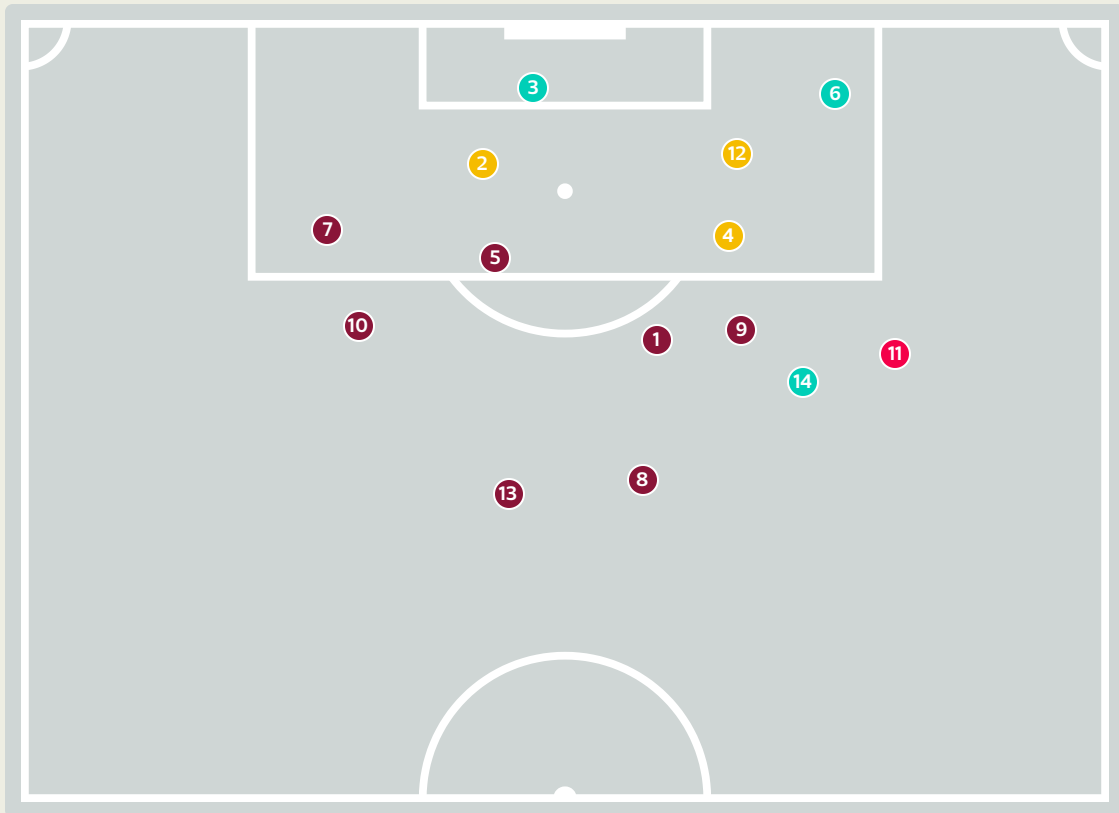


Goalkeeping Distribution



Goal Prevention

Japan



14

Total Attempts on Goal Faced

80

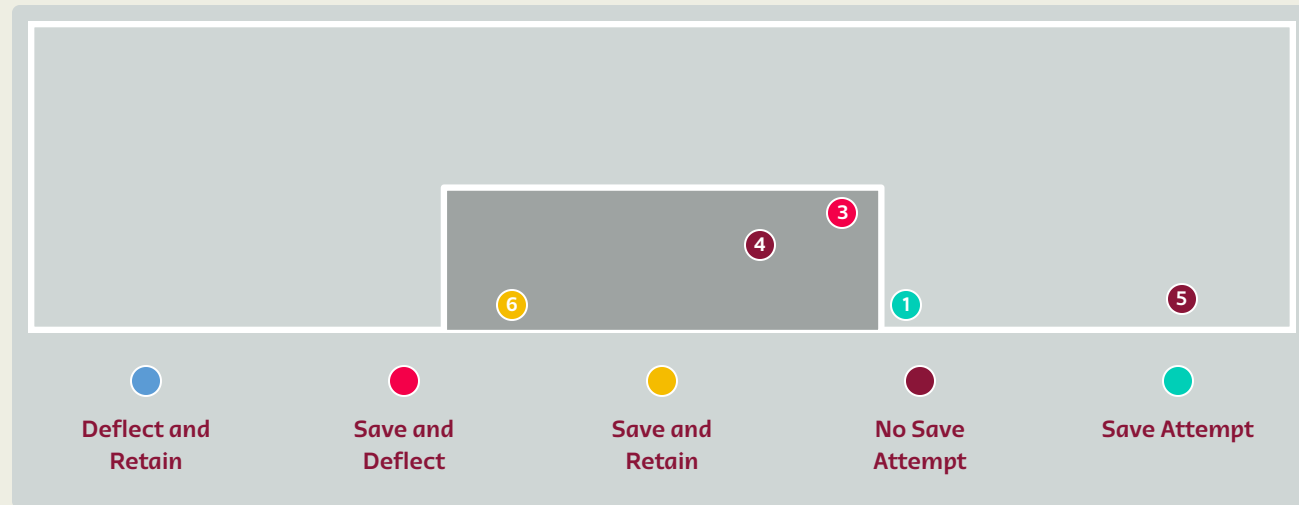
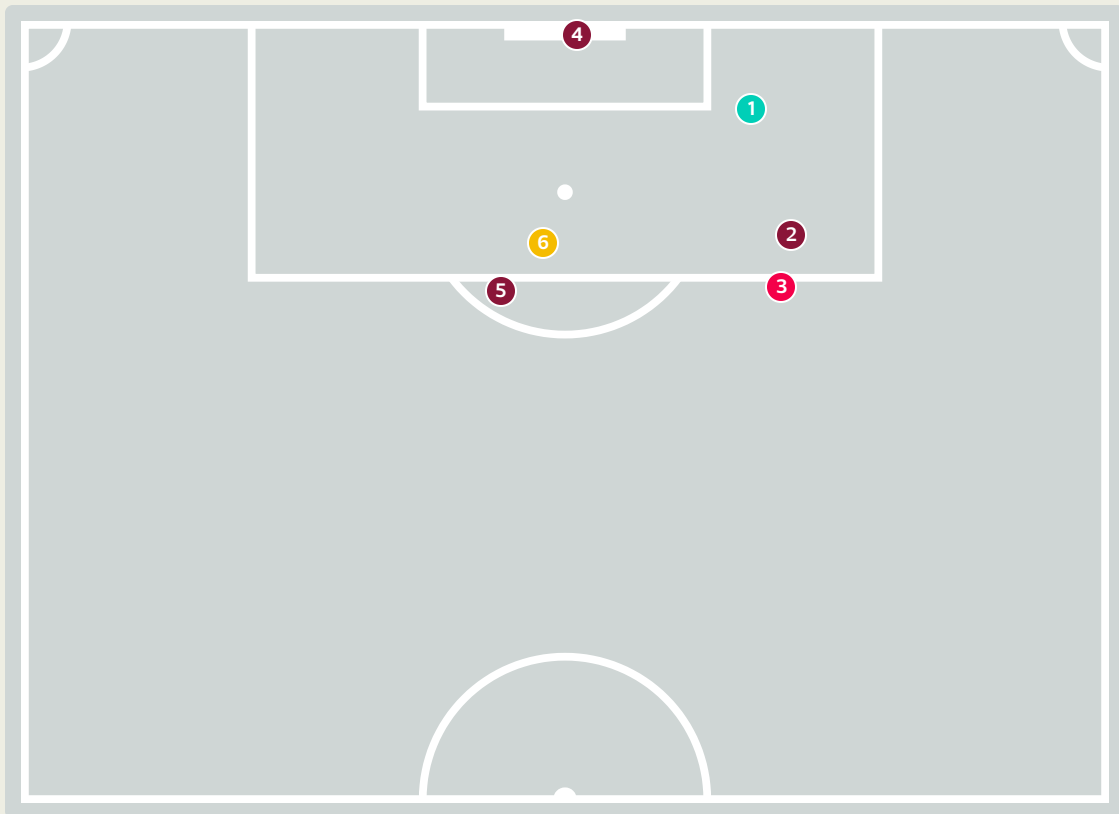
Save %

Total Attempts on Goal Faced	Total Goal Interventions	Save & Retain	Deflect & Retain	Save & Deflect	Save Attempt	No Save Attempt
14	4	3	0	1	3	7

Spain



Goal Prevention



Intervention Type



- Deflect & Retain
- Save & Deflect
- Save & Retain
- No Save Attempt
- Save Attempt

Intervention Body Type



- Head
- Hands
- Upper Body
- Lower Body
- Feet

6

Total Attempts on Goal Faced

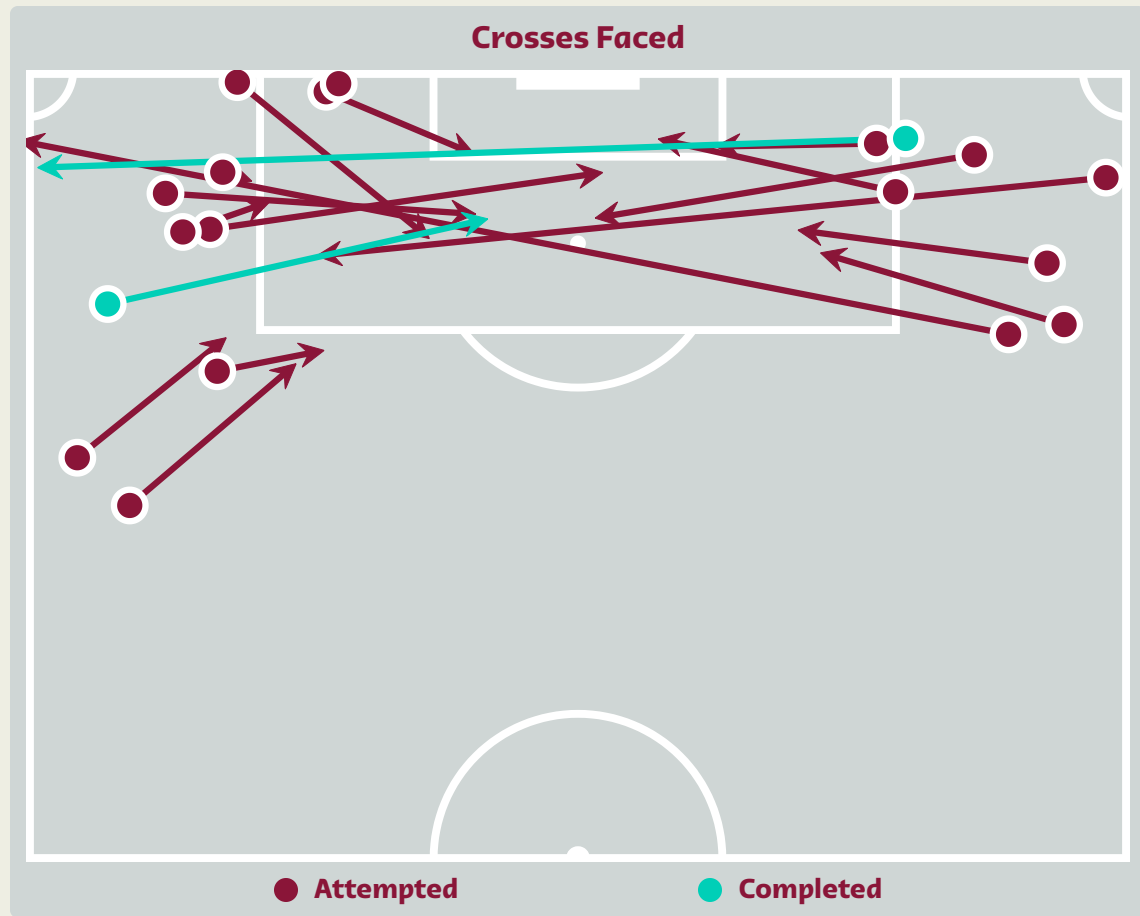
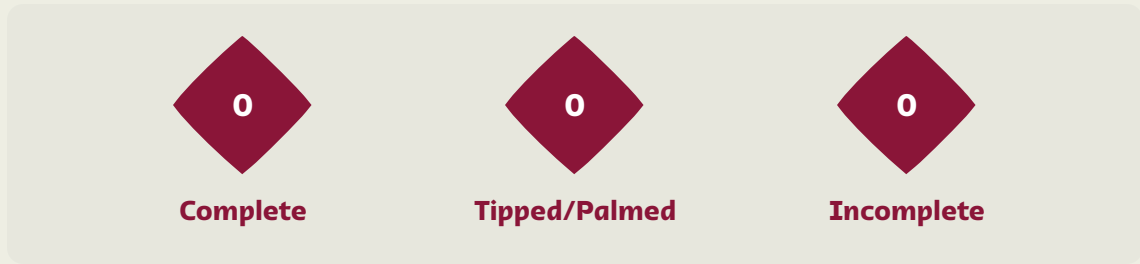
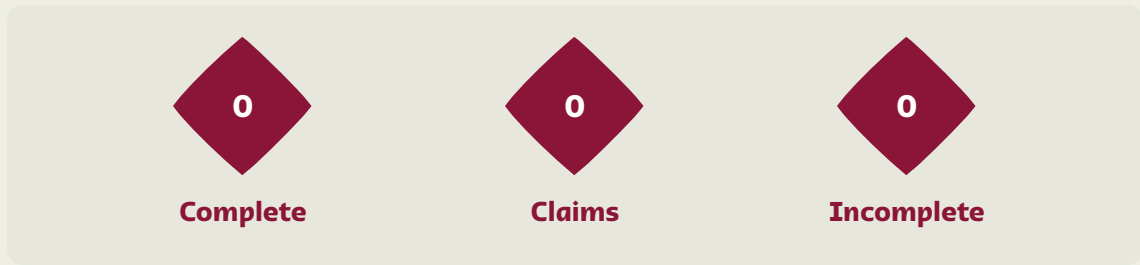
33

Save %

Total Attempts on Goal Faced	Total Goal Interventions	Save & Retain	Deflect & Retain	Save & Deflect	Save Attempt	No Save Attempt
6	2	1	0	1	1	3

Aerial Control

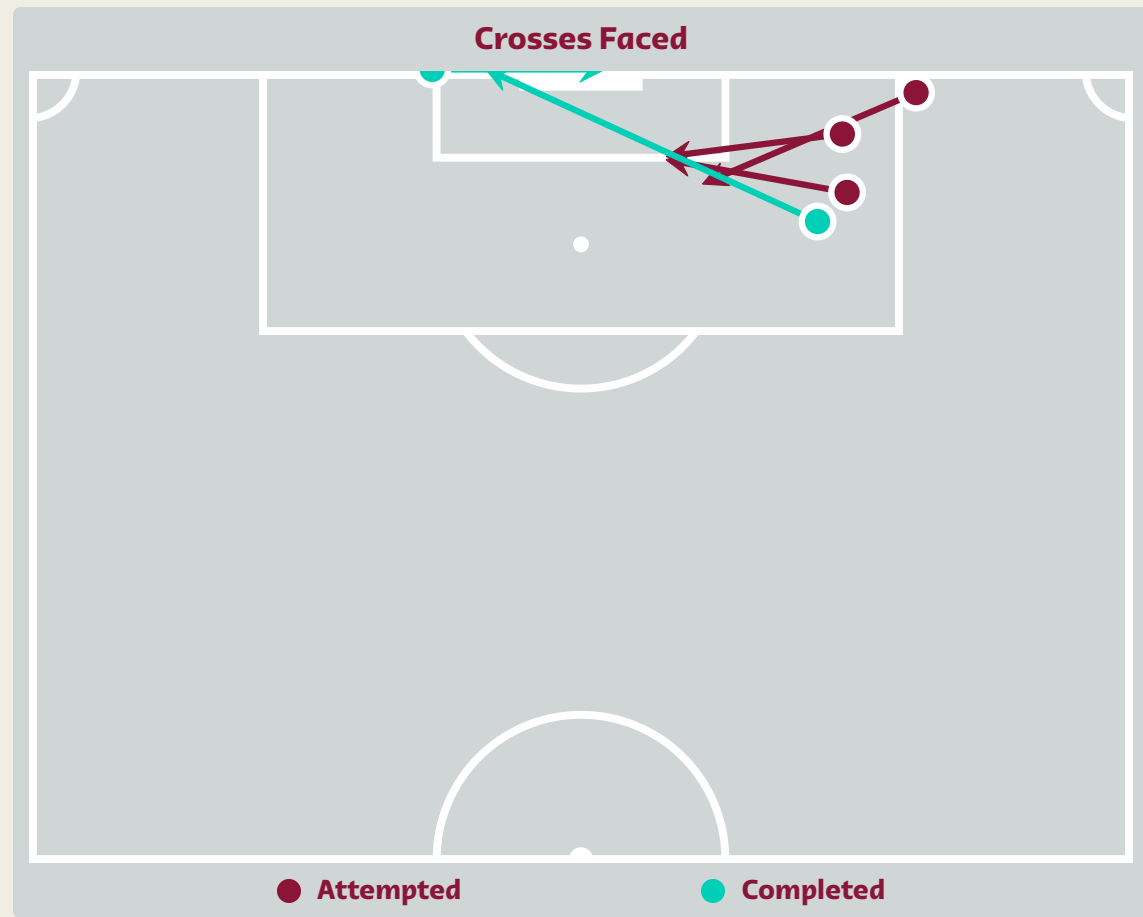
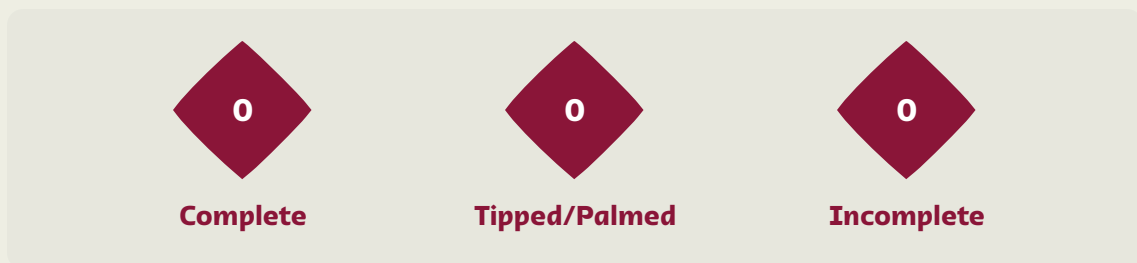
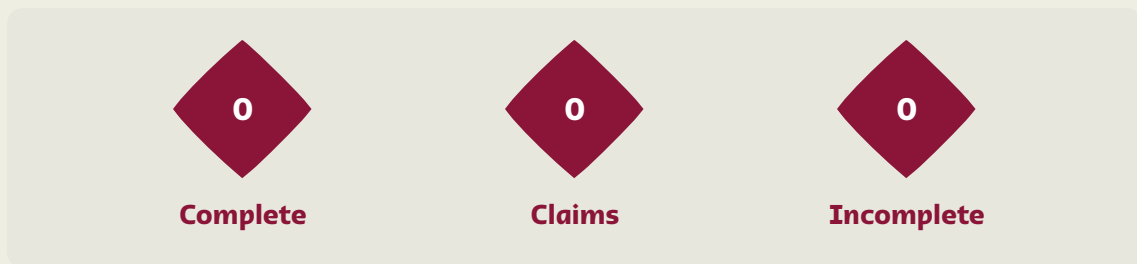
Japan



Delivery Types Faced

Total	In Swing	Out Swing	Driven	Lofted	Cutback	Push
20	4	1	2	6	1	6

Aerial Control



Delivery Types Faced

Total	In Swing	Out Swing	Driven	Lofted	Cutback	Push
6	0	1	2	0	3	0



FIFA WORLD CUP
Qatar 2022



SET PLAYS



Japan v Spain



Set Plays - Corners



19

Total Set Plays

8

Total Free Kicks

0

Total Penalties

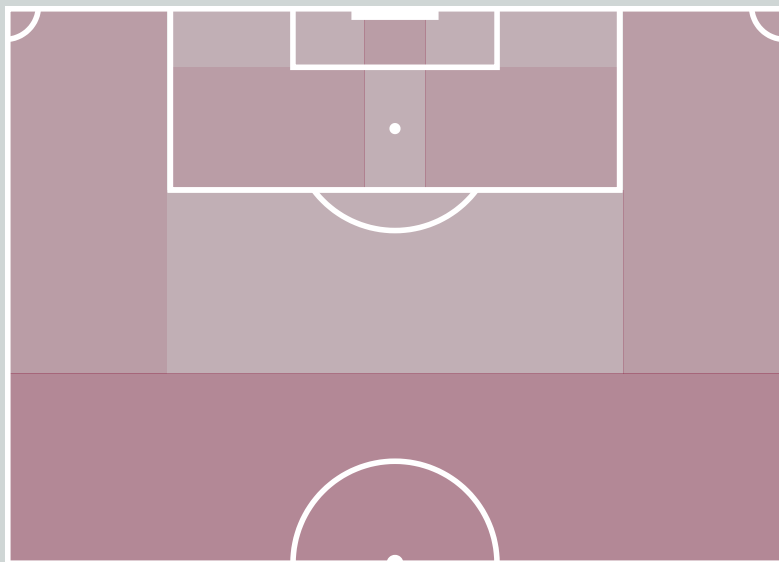
0

Total Corners

11

Total Throw Ins

Corners - First Contact



● Japan

● Spain

Delivery Type	From Left Side	From Right Side	Total
Direct to Area	0	0	0
Short	0	0	0
Edge of Penalty Area	0	0	0

Delivery Style	Total
Inswing	0
Outswing	0
Driven	0

Free Kicks

Type	Total
Direct	6
Direct (on target)	0
Direct (off target)	0
Indirect	2

First Contacts on Japan Crosses

0

By Japan

0

By Spain

Top 5 Player First Contacts

Player	Team	Total
--------	------	-------

Set Plays - Corners

35

Total Set Plays

11

Total Free Kicks

0

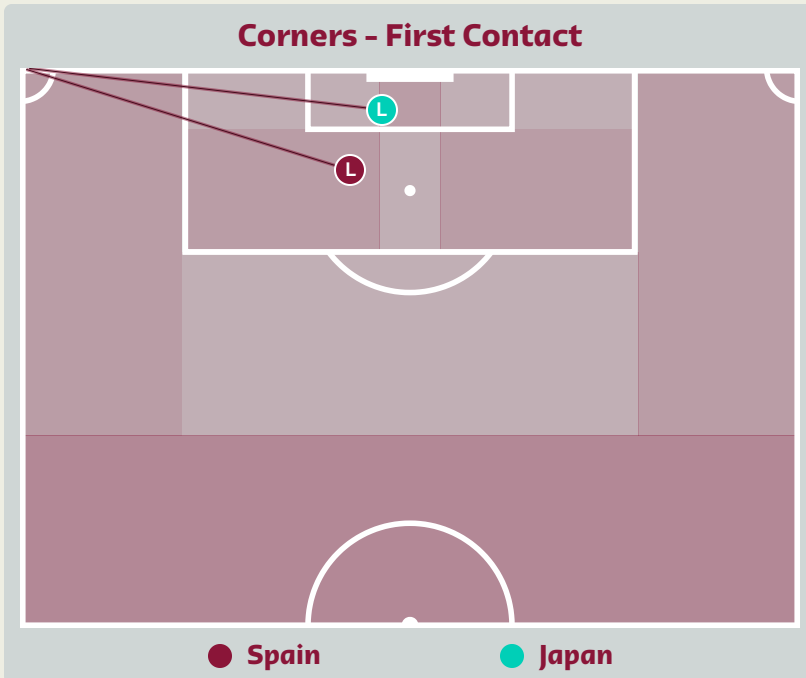
Total Penalties

2

Total Corners

22

Total Throw Ins



Delivery Type	From Left Side	From Right Side	Total
Direct to Area	1	0	1
Short	1	0	1
Edge of Penalty Area	0	0	0

Delivery Style	Total
Inswing	1
Outswing	0
Driven	0

Free Kicks	
Type	Total
Direct	9
Direct (on target)	0
Direct (off target)	0
Indirect	2

First Contacts on Spain Crosses

1

By Spain

1

By Japan

Top 5 Player First Contacts		
Player	Team	Total
MORATA Alvaro	Spain	1
YOSHIDA Maya	Japan	1



FIFA WORLD CUP
Qatar 2022



INDIVIDUAL DATA IN POSSESSION



Japan v Spain



In Possession - Distributions

Japan



#	Player	Passes Attempted	Passes Completed	Pass Completion %	Switches of Play	Crosses Attempted	Crosses Completed	Line Breaks Attempted	Line Breaks Completed	Line Break Completion %	Ball Progressions	Take Ons	Step Ins	Attempts at Goal	Goals
12	GONDA Shuichi	25	13	52%	1	0	0	16	6	37%	0	0	0	0	0
3	TANIGUCHI Shogo	26	25	96%	1	0	0	8	8	100%	0	0	0	0	0
4	ITAKURA Kou	19	16	84%	0	0	0	5	4	80%	1	1	0	1	0
5	NAGATOMO Yuto	10	7	70%	0	0	0	2	1	50%	0	0	0	0	0
11	KUBO Takefusa	6	5	83%	0	1	0	4	3	75%	0	0	0	0	0
13	MORITA Hidemasa	26	20	77%	0	0	0	9	5	55%	2	1	1	0	0
14	ITO Junya	24	20	83%	0	1	0	7	6	85%	3	1	2	1	0
15	KAMADA Daichi	15	11	73%	0	0	0	7	4	57%	1	0	1	1	0
17	TANAKA Ao	30	19	63%	0	0	0	9	2	22%	0	0	0	1	1
22	YOSHIDA Maya	19	16	84%	0	0	0	5	4	80%	0	0	0	0	0
25	MAEDA Daizen	5	2	40%	0	1	0	1	1	100%	0	0	0	0	0
6	ENDO Wataru	0	0	0%	0	0	0	0	0	0%	0	0	0	0	0
8	DOAN Ritsu	4	1	25%	0	2	2	3	2	66%	1	1	0	1	1
9	MITOMA Kaoru	9	8	89%	0	1	1	3	3	100%	2	0	2	0	0
16	TOMIYASU Takehiro	2	1	50%	0	0	0	2	1	50%	0	0	0	0	0
18	ASANO Takuma	4	2	50%	0	0	0	1	1	100%	0	0	0	1	0

In Possession - Offers & Receptions

Japan



			Offer movement types						
#	Player	Total Offers	In Front	In Between	Out to In	In to Out	In Behind	No Movement	Offers Received
12	GONDA Shuichi	4	0	0	0	0	0	4	2
3	TANIGUCHI Shogo	16	5	0	0	0	0	11	9
4	ITAKURA Kou	19	1	1	0	0	1	16	7
5	NAGATOMO Yuto	19	5	0	0	0	6	8	7
11	KUBO Takefusa	26	4	4	1	4	9	4	7
13	MORITA Hidemasa	28	18	7	0	1	0	2	13
14	ITO Junya	26	7	2	2	1	4	10	14
15	KAMADA Daichi	29	6	3	1	3	9	7	8
17	TANAKA Ao	55	23	23	2	3	3	1	15
22	YOSHIDA Maya	23	4	0	0	0	0	19	8
25	MAEDA Daizen	23	0	4	1	0	17	1	2
6	ENDO Wataru	1	0	1	0	0	0	0	1
8	DOAN Ritsu	17	0	3	0	3	10	1	3
9	MITOMA Kaoru	12	3	0	0	1	2	6	3
16	TOMIYASU Takehiro	1	0	0	0	0	0	1	0
18	ASANO Takuma	16	0	1	0	1	14	0	2

In Possession - Distributions



#	Player	Passes Attempted	Passes Completed	Pass Completion %	Switches of Play	Crosses Attempted	Crosses Completed	Line Breaks Attempted	Line Breaks Completed	Line Break Completion %	Ball Progressions	Take Ons	Step Ins	Attempts at Goal	Goals
23	SIMON Unai	36	36	100%	0	0	0	4	4	100%	1	0	1	0	0
2	AZPILICUETA Cesar	72	70	97%	0	0	0	11	10	90%	0	0	0	0	0
4	TORRES Pau	188	173	92%	1	0	0	28	18	64%	2	0	2	1	0
5	BUSQUETS Sergio	71	66	93%	0	0	0	16	13	81%	0	0	0	1	0
7	MORATA Alvaro	14	10	71%	2	0	0	1	0	0%	0	0	0	3	1
9	GAVI	42	40	95%	0	2	0	5	4	80%	2	2	0	0	0
12	WILLIAMS Nico	22	22	100%	0	1	0	1	1	100%	2	2	0	1	0
14	BALDE Alejandro	63	59	94%	0	2	0	8	6	75%	1	1	0	0	0
16	RODRI	211	205	97%	1	0	0	25	20	80%	5	0	5	0	0
21	OLMO Dani	45	36	80%	0	4	1	7	6	85%	6	3	3	4	0
26	PEDRI	137	120	88%	4	0	0	35	29	82%	1	0	1	0	0
10	ASENSIO Marco	24	20	83%	0	3	0	8	5	62%	0	0	0	3	0
11	TORRES Ferran	13	12	92%	1	3	1	2	2	100%	4	2	2	0	0
18	ALBA Jordi	53	50	94%	0	4	0	6	4	66%	0	0	0	1	0
20	CARVAJAL Dani	60	56	93%	0	0	0	11	9	81%	1	0	1	0	0
25	FATI Ansu	19	17	89%	0	1	0	1	1	100%	0	0	0	0	0

In Possession - Offers & Receptions



			Offer movement types						
#	Player	Total Offers	In Front	In Between	Out to In	In to Out	In Behind	No Movement	Offers Received
23	SIMON Unai	10	0	0	0	0	0	10	4
2	AZPILICUETA Cesar	68	29	0	0	0	0	39	43
4	TORRES Pau	88	10	1	0	0	0	77	48
5	BUSQUETS Sergio	84	59	18	0	0	0	7	26
7	MORATA Alvaro	43	14	15	0	0	14	0	4
9	GAVI	98	46	33	0	6	9	4	32
12	WILLIAMS Nico	50	6	2	1	1	18	22	15
14	BALDE Alejandro	93	35	0	0	2	2	54	35
16	RODRI	115	4	0	0	0	0	111	73
21	OLMO Dani	103	18	39	3	2	22	19	36
26	PEDRI	125	59	34	1	2	5	24	67
10	ASENSIO Marco	44	17	11	0	2	11	3	12
11	TORRES Ferran	53	5	8	0	0	28	12	11
18	ALBA Jordi	57	22	0	0	0	2	33	34
20	CARVAJAL Dani	38	23	0	0	0	3	12	17
25	FATI Ansu	69	7	17	1	1	39	4	12



FIFA WORLD CUP
Qatar 2022



INDIVIDUAL DATA OUT OF POSSESSION



Japan v Spain



Out of Possession

Japan



#	Player	Tackles Made / Won	Blocks	Interceptions	Pressing Direct	Pressing Indirect	Forced Turnovers	Duels Won - Aerial	Duels Won - Physical	Possession Contests won	Clearances	Loose Ball Receptions	Pushing On	Pushing On into Pressing	Possession Regains	Possession Interrupted
12	GONDA Shuichi	0 / 0	0	0	0	0	0	0	0	0	0	2	0	0	4	0
3	TANIGUCHI Shogo	3 / 0	3	1	2	6	0	3	0	3	7	3	36	2	2	8
4	ITAKURA Kou	1 / 1	2	0	2	17	0	1	0	1	7	5	43	8	3	5
5	NAGATOMO Yuto	3 / 1	1	1	2	16	0	1	0	1	1	1	31	15	2	2
11	KUBO Takefusa	0 / 0	2	0	4	54	0	0	1	1	0	1	61	48	2	0
13	MORITA Hidemasa	5 / 1	9	1	6	50	0	2	0	4	7	5	101	22	8	11
14	ITO Junya	6 / 2	3	0	10	44	0	3	0	3	0	5	49	21	3	3
15	KAMADA Daichi	5 / 0	0	0	8	58	0	0	0	0	1	2	68	33	0	3
17	TANAKA Ao	0 / 0	3	1	6	81	0	2	0	2	0	7	72	51	2	2
22	YOSHIDA Maya	2 / 0	3	3	2	6	0	0	0	1	7	5	49	6	3	7
25	MAEDA Daizen	2 / 1	2	1	5	80	0	1	0	1	0	1	94	50	3	1
6	ENDO Wataru	0 / 0	2	0	0	9	0	0	0	0	2	0	9	5	0	1
8	DOAN Ritsu	0 / 0	5	0	2	62	0	0	0	0	4	4	65	45	2	6
9	MITOMA Kaoru	2 / 0	1	2	13	20	0	0	0	0	2	1	38	25	1	3
16	TOMIYASU Takehiro	0 / 0	3	0	0	24	0	0	0	0	1	1	31	19	0	3
18	ASANO Takuma	0 / 0	0	0	0	48	0	0	0	1	0	0	44	35	0	0

Out of Possession



#	Player	Tackles Made / Won	Blocks	Interceptions	Pressing Direct	Pressing Indirect	Forced Turnovers	Duels Won - Aerial	Duels Won - Physical	Possession Contests won	Clearances	Loose Ball Receptions	Pushing On	Pushing On into Pressing	Possession Regains	Possession Interrupted
23	SIMON Unai	0 / 0	0	0	0	0	0	0	0	0	0	1	0	0	2	0
2	AZPILICUETA Cesar	1 / 1	2	1	1	5	0	1	0	1	2	1	9	4	3	4
4	TORRES Pau	0 / 0	1	1	2	1	0	0	0	0	6	4	9	3	4	2
5	BUSQUETS Sergio	0 / 0	1	1	3	15	0	3	0	3	1	7	26	11	3	1
7	MORATA Alvaro	1 / 1	0	0	0	13	0	1	0	1	0	2	10	7	1	0
9	GAVI	2 / 1	2	0	2	13	0	0	0	2	0	2	24	7	2	1
12	WILLIAMS Nico	2 / 0	0	0	3	13	0	0	0	0	0	3	13	7	1	1
14	BALDE Alejandro	3 / 1	1	2	6	9	0	0	0	0	0	2	18	10	4	0
16	RODRI	0 / 0	0	4	0	2	0	2	0	3	4	9	9	1	6	3
21	OLMO Dani	1 / 0	0	0	2	20	0	0	0	0	0	3	22	15	0	0
26	PEDRI	4 / 2	0	1	4	23	0	0	0	0	1	8	23	10	3	3
10	ASENSIO Marco	0 / 0	0	0	0	1	0	0	0	0	0	0	2	0	1	0
11	TORRES Ferran	1 / 1	0	0	1	2	0	1	0	1	0	2	2	0	1	0
18	ALBA Jordi	0 / 0	0	0	0	1	0	0	0	0	1	5	1	0	1	0
20	CARVAJAL Dani	1 / 1	0	1	1	6	0	1	0	1	0	6	4	3	3	0
25	FATI Ansu	0 / 0	0	0	0	1	0	1	0	1	0	3	1	0	0	0



FIFA WORLD CUP
Qatar 2022



INDIVIDUAL DATA PHYSICAL



Japan v Spain



Physical Data

Japan



#	Player	Total Distance (m)	Zone 1: 0-7 km/h (m)	Zone 2: 7-15 km/h (m)	Zone 3: 15-20 km/h (m)	Zone 4: 20-25 km/h (m)	Zone 5: 25+ km/h (m)	High Speed Runs (Zone 4)	Sprints (Zone 5)	Top Speed (km/h)
12	GONDA Shuichi	3563.7	3045.5	444.4	63.4	10.0	0	5	1	24.3
3	TANIGUCHI Shogo	10520.2	3525.3	5640.9	889.0	372.4	91.5	88	31	28.7
4	ITAKURA Kou	9677.5	3768.4	4659.7	853.6	326.1	69.7	78	31	31.5
5	NAGATOMO Yuto	5323.0	1767.2	2521.5	693.6	241.1	99.5	68	27	33.1
11	KUBO Takefusa	5244.4	2094.6	1992.3	655.5	324.1	177.8	69	30	31.3
13	MORITA Hidemasa	12657.0	2764.3	7247.4	1889.7	678.4	77.2	159	55	29.1
14	ITO Junya	9262.4	3784.6	3957.8	886.4	444.6	189.0	87	38	34.1
15	KAMADA Daichi	8479.5	2651.5	3660.6	1417.8	604.6	145.0	114	45	29.5
17	TANAKA Ao	10699.8	2876.1	5558.5	1591.1	567.1	105.9	141	43	29.0
22	YOSHIDA Maya	10251.4	3664.9	5376.9	903.1	267.6	39.0	85	24	31.0
25	MAEDA Daizen	8679.2	2083.9	4051.4	1487.6	675.2	381.0	140	60	31.6
6	ENDO Wataru	1623.7	249.2	1037.5	286.4	25.0	25.3	26	3	29.4
8	DOAN Ritsu	5977.8	2044.4	2786.2	768.1	343.1	35.3	72	27	27.7
9	MITOMA Kaoru	5725.9	2177.5	2262.3	676.8	383.6	225.6	74	37	33.6
16	TOMIYASU Takehiro	3429.6	1065.2	1726.8	410.9	200.3	26.4	47	16	28.8
18	ASANO Takuma	4890.8	1115.6	2329.5	891.6	271.4	283.2	80	25	33.5

Physical Data



#	Player	Total Distance (m)	Zone 1: 0-7 km/h (m)	Zone 2: 7-15 km/h (m)	Zone 3: 15-20 km/h (m)	Zone 4: 20-25 km/h (m)	Zone 5: 25+ km/h (m)	High Speed Runs (Zone 4)	Sprints (Zone 5)	Top Speed (km/h)
23	SIMON Unai	5443.4	4092.9	1055.5	258.0	37.0	0	30	4	24.0
2	AZPILICUETA Cesar	5197.3	1739.5	2249.4	766.6	319.1	122.7	67	30	29.4
4	TORRES Pau	10554.6	3694.1	4933.2	1372.1	431.7	123.5	124	31	32.1
5	BUSQUETS Sergio	11546.0	3462.6	6495.8	1182.3	361.4	43.9	115	24	28.5
7	MORATA Alvaro	6804.9	2052.4	3477.3	790.7	320.5	164.7	61	27	30.3
9	GAVI	8546.3	2319.5	4480.0	1192.2	483.7	70.1	99	37	29.5
12	WILLIAMS Nico	5567.0	2070.9	2060.9	833.9	396.4	205.4	81	36	35.0
14	BALDE Alejandro	7317.4	2355.5	3030.9	1108.6	590.5	232.0	111	48	31.3
16	RODRI	10894.6	3702.0	5147.7	1322.6	508.8	212.4	129	45	32.0
21	OLMO Dani	9426.1	3407.5	4125.8	1028.4	544.8	318.6	112	48	31.7
26	PEDRI	11856.6	3378.0	6105.0	1945.7	410.2	17.8	159	33	29.0
10	ASENSIO Marco	4673.6	1732.1	2277.5	430.9	151.4	82.3	41	15	30.2
11	TORRES Ferran	4176.5	1858.5	1444.7	579.7	213.8	79.4	58	21	32.2
18	ALBA Jordi	3301.2	1133.6	1645.6	360.5	148.9	12.5	29	8	26.2
20	CARVAJAL Dani	5114.4	1968.5	2109.7	548.8	360.6	126.8	60	31	32.3
25	FATI Ansu	3625.5	1061.6	1820.4	458.3	229.5	55.8	50	21	28.7



FIFA WORLD CUP
Qatar 2022

